

# Cisco

## Exam Questions 200-901

Developing Applications and Automating Workflows using Cisco Core Platforms (DEVASC)



NEW QUESTION 1  
Refer to the exhibit.

DELETE	Create
GET	Read
PATCH	Update
POST	Update
PUT	Delete

A REST API return this JSON output for a GET HTTP request, Which has assigned to a variable called “vegetables” Using python, which output is the result of this command?

DELETE	POST
GET	GET
PATCH	PATCH
POST	PUT
PUT	DELETE

- A. Lettuce
- B. Kiwi
- C. ['kiwi', 'grape']
- D. {'color': 'green', 'items': ['kiwi', 'grape']}

Answer: B

NEW QUESTION 2

Fill in the blanks to complete the python script to request a service ticket using the APIC-EM rest API for the user “devnetuser”.

The focus is on advanced planning and outcome prediction.

Users receive functional software and can provide feedback after the product is available.

The timeline is followed and feedback is gathered before product completion.

Developers respond to requirement changes throughout the development process.

Agile

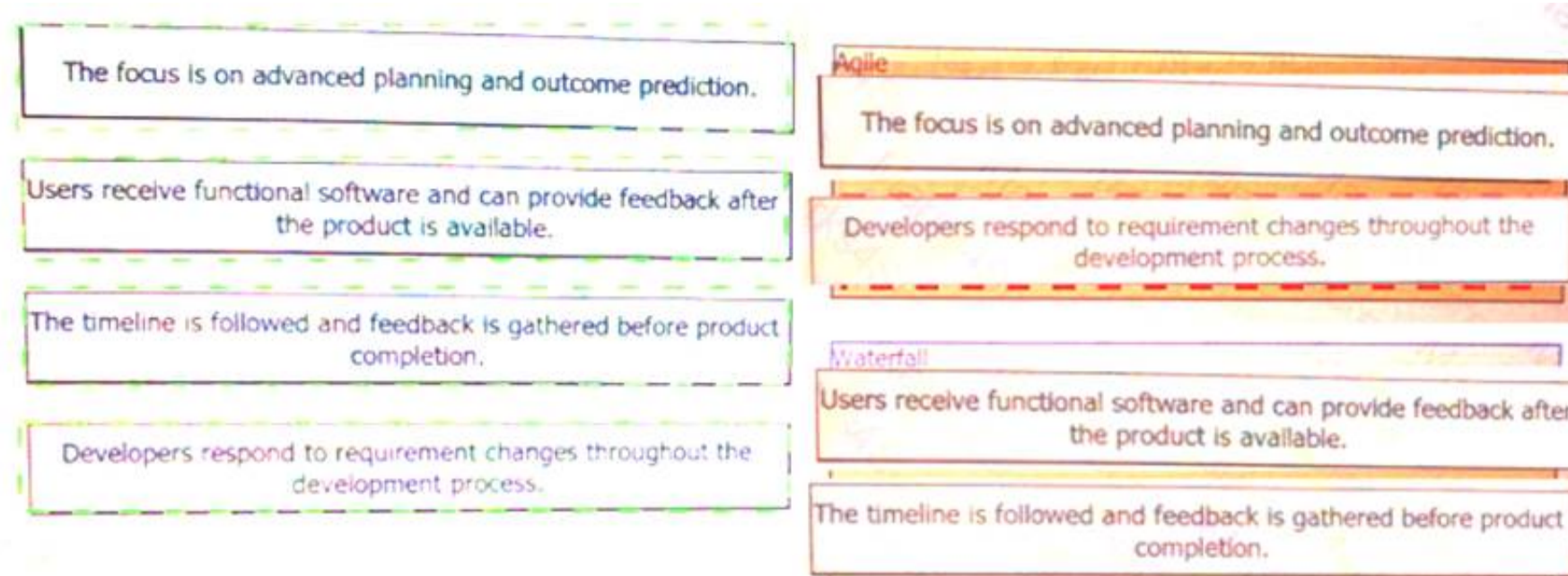
Waterfall

- A. Mastered
- B. Not Mastered

**Answer:** A

**Explanation:**

Solution as below



### NEW QUESTION 3

Which statement about authentication a RESTCONF API session with a router that runs Cisco IOS XE software is true?

- A. OAuth must be used.
- B. A token must be retrieved and the associated string must be embedded in the X-Auth-Token header.
- C. Basic authentication must be used.
- D. No authentication is required.

**Answer:** C

### NEW QUESTION 4

Refer to the exhibit.

```
$ pyang -f tree Cisco-IOS-XE-native.yang
module: Cisco-IOS-XE-native
  +--rw native
    +--rw logging
      +--rw monitor|
        +--rw severity?  logging-level-type

$ curl --insecure -v -X PATCH \
  "https://ios-xe-mgmt-latest.cisco.com:9443/restconf/data/Cisco-IOS-XE-native:native" \
  -H 'Authorization: Basic ZGV2ZWxvcGVyOkMxc2NmMTIzNDU=' -H 'Accept: application/yang-data+json' \
  -H 'Content-Type: application/yang-data+json' \
  -d '{ "Cisco-IOS-XE-native:native" : { "logging" : { "monitor" : { "severity" : "alerts" }} } }'
> ...
< ...
< HTTP/1.1 204 No Content
```

What is represented in this YANG module?

- A. interface management
- B. topology
- C. BGP
- D. OpenFlow

**Answer:** A

### NEW QUESTION 5

What are two benefit of managing network configuration via APIs? (Choose two.)

- A. configuration on devices becomes less complex
- B. more security due to locking out manual device configuration
- C. increased scalability and consistency of network changes
- D. eliminates the need of legacy management protocols like SNMP
- E. reduction in network changes performed manually

**Answer:** CE

### NEW QUESTION 6

Which two items are Cisco DevNet resources? (Choose two.)

- A. TAC support
- B. Bitbucket
- C. Sandbox
- D. Software research
- E. API Documentation

**Answer:** CE

**NEW QUESTION 7**

Which way should be used to safely the API keys?

- A. In an environment variable unique to the system database
- B. Encrypted in a configuration file that is separate from the code
- C. Encrypted in the code in a function
- D. Plain text in the code as a constant

**Answer:** B

**NEW QUESTION 8**

Refer to the exhibit.

```
{
  "items": [{
    "kind": "object#NetworkObj",
    "selfLink": "https://10.201.230.5/api/objects/networkobjects/db01",
    "name": "db01",
    "host": {
      "kind": "IPv4address",
      "value": "172.16.0.11"
    },
    "objectId": "db01"
  }]
}
```

What is the action of the Bash script that is shown?

- A. The script waits until input is entered
- B. If the directory exists, the script goes into it until there is no directory with the same name, then it creates a new directory.
- C. The script goes into the directory called "\$ndir" and makes a new directory called "\$ndir"
- D. The script waits until input is entered, then it goes into the directory entered and creates a new directory with the same name.
- E. For all directories in the current folder
- F. The script goes into directory and makes a new directory.

**Answer:** A

**NEW QUESTION 9**

Which platform has an API that be used to obtain a list of vulnerable software on user devices?

- A. Cisco Umbrella
- B. Cisco Firepower
- C. Cisco Identity Services Engine
- D. Cisco Advanced Malware Protection

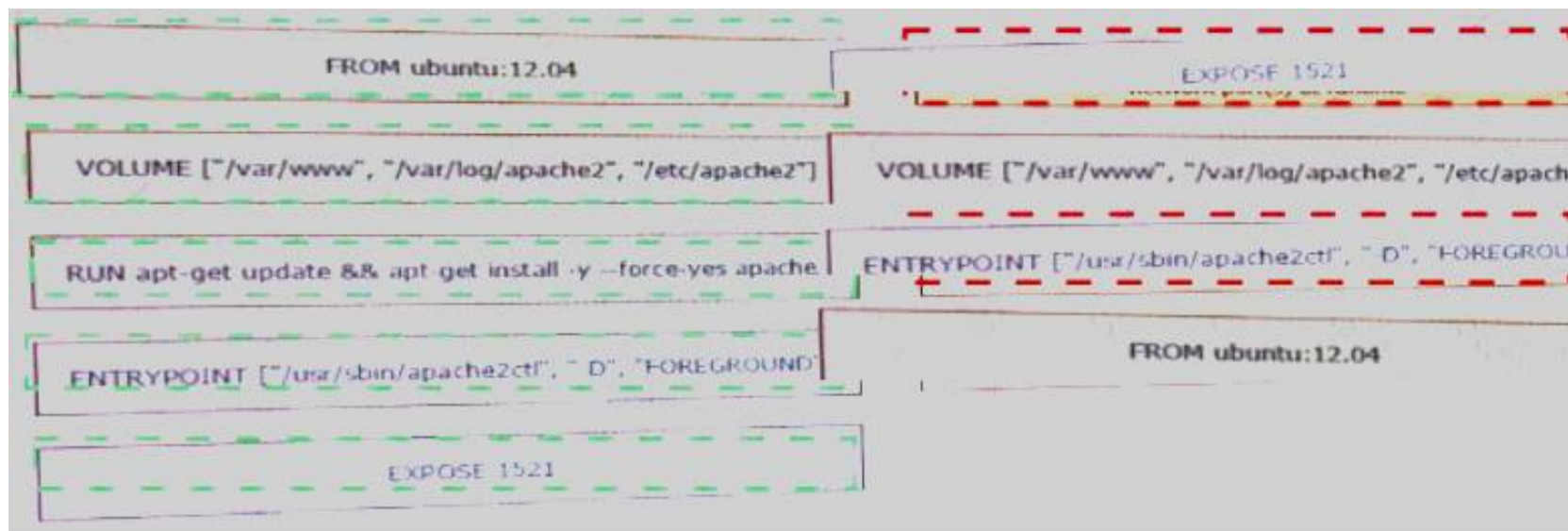
**Answer:** D

**NEW QUESTION 10**

Refer to the exhibit.

FROM ubuntu:12.04	informs Docker that the container listens on the specified network port(s) at runtime
VOLUME ["/var/www", "/var/log/apache2", "/etc/apache2"]	creates a mount point with the specified name
RUN apt-get update && apt-get install -y --force-yes apache2	configures a container that runs as an executable
ENTRYPOINT ["/usr/sbin/apache2ctl", "-D", "FOREGROUND"]	must be the first instruction in the Docker file
EXPOSE 1521	

Fill in the blank to complete the query parameter and value so that the result set is returned in reverse chronological order (most recent first) based on when message were entered.



- A. Mastered
- B. Not Mastered

Answer: A

Explanation:

?sortBy=lastactivity

```
<books>
  <science>
    <biology>10.00</biology>
    <geology>9.00</geology>
    <chemistry>8.00</chemistry>
  </science>
  <math>
    <calculus>20.00</calculus>
    <algebra>12.00</algebra>
  </math>
</books>
```

#### NEW QUESTION 10

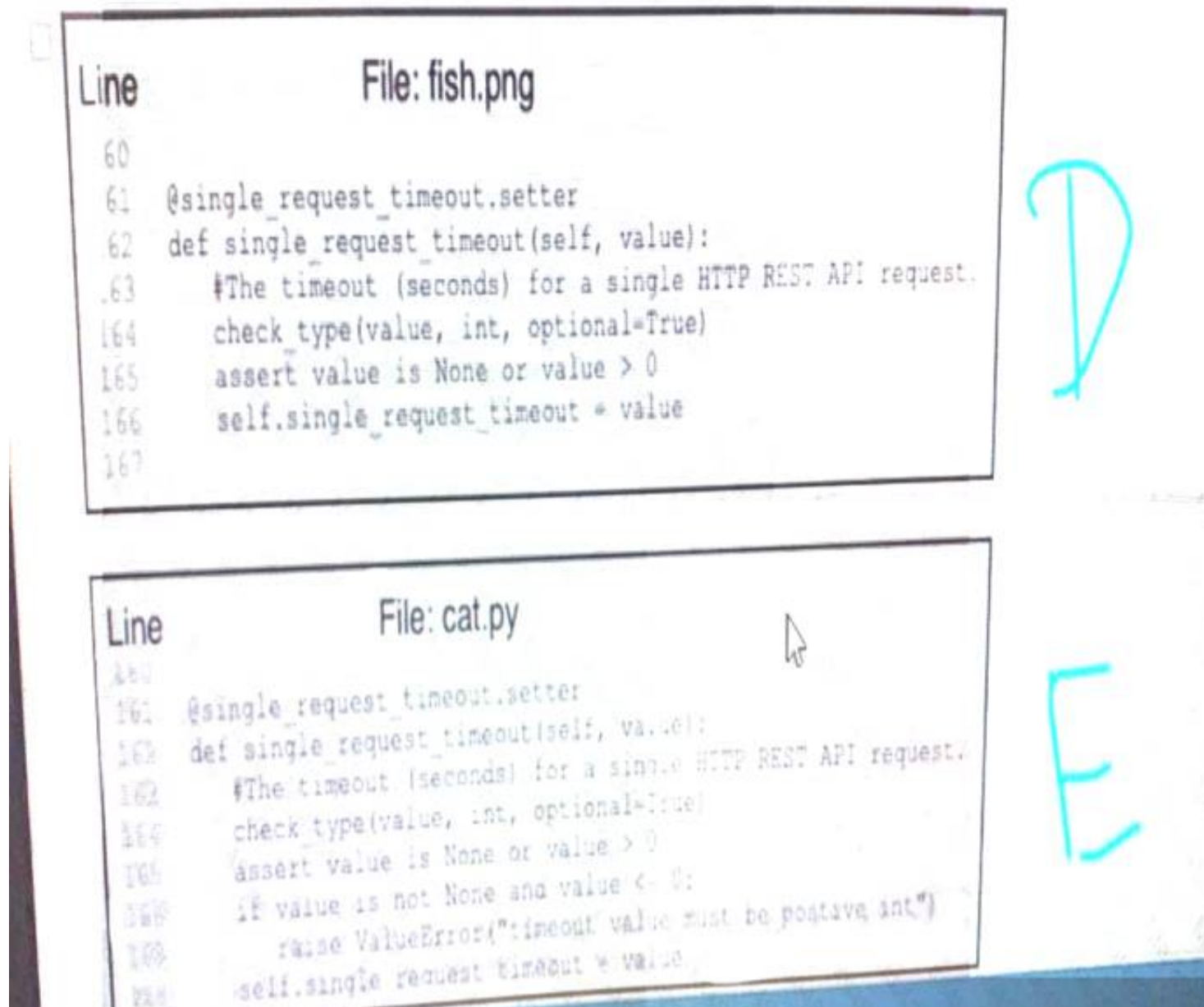
Which action resolves a 401 error in response to an HTTP GET that is issued to retrieve statement using RESTCONF on a CSR 1000V?

- A. Change the HTTP method to PUT.
- B. Change the transport protocol to HTTPS.
- C. Check the MIMF types in the HTTP headers.
- D. Check the authentication credentials.

Answer: D

#### NEW QUESTION 14

Refer to the exhibit.



What is the effect of this Ansible playbook on an IOS router?

- A. A new running configuration is pushed to the IOS router.
- B. The current running configuration of the IOS router is backed up.
- C. The start-up configuration of the IOS router is copied to a local folder.
- D. A new start-up configuration is copied to the IOS router.

**Answer: B**

#### NEW QUESTION 17

Which CI/CD tool is an automation tool used to build, test, and deploy software?

- A. Nagios
- B. Gradle
- C. Jenkins
- D. Git

**Answer: C**

#### NEW QUESTION 22

Which type of HTTP method is used by the Meraki and webex teams APIs to send webhook notifications?

- A. HTTP GET
- B. HTTP PUT
- C. HTTP HEAD
- D. HTTP POST

**Answer: D**

#### NEW QUESTION 27

A function my\_func() returns True when it executes normally. Which python snippet tests my\_func()?

For CLI commands that support XML, the `clid()` method returns JSON output. An exception is thrown when XML is not used. Executes CLI commands. Takes CLI command string and returns show command output in a JSON form.

“

Note: The “clid” API can be useful when searching the output of show commands using JSON tools as shown in the example.

#### PYTHON

```
Example:
>>> import json
>>> from cli import *
>>> jversion = json.loads(clid("show
version"))
>>> jversion[bios_ver_str]
'08.06'
```

#### Arguments:

- cmd: Single CLI command or a batch of CLI commands. Delimiter for multiple CLI commands is a space followed by a semicolon. Configuration commands must be in a fully qualified form.

#### Returns:

- string: JSON-formatted output of show commands.

- A. Option A
- B. Option B
- C. Option C
- D. Option D

**Answer: B**

#### NEW QUESTION 29

Refer to the exhibit.

```
leaf IPPeer {
  type union {
    type inet:ipv4-address;
    type inet:ipv6-address;
  }
}
```

Drag and drop the descriptors from the left onto the correct parts of the API request and response on the right.

```
{
  "IPPeer": "10.1.1.1"
}

{
  "IPPeer": "10.1.1.1 2001:db::1"
}

{
  "IPPeer": [
    "10.1.1.1",
    "2001:db::1"
  ]
}

{
  "IPPeer": [
    "10.1.1.1"
  ]
}
```

- A. Mastered
- B. Not Mastered

**Answer:** A

**Explanation:**

A – E, B – D, C – B, D – C, E – A, F – F

**NEW QUESTION 32**

What is an example of a network interface hardware address?

- A. domain name
- B. IP address
- C. workstation name
- D. MAC address

**Answer:** D

**NEW QUESTION 37**

Refer to the exhibit.

```
>>> from cli import *
>>> import json

>>>
>>> cli('configure terminal ; interface loopback 5 ; no shut')
''
>>> intflist=json.loads(cli('show interface brief'))
>>> i=0
>>> while i < len (intflist['TABLE_interface']['ROW_interface']):
...     intf=intflist['TABLE_interface']['ROW_interface'][i]
...     i=i+1
...     if intf['state'] == 'up':
...         print intf['interface']
```

What caused the error in this API request?

- A. The API resource does not support the POST operation.
- B. The API resource does not support JSON format payloads.

- C. The submitted JSON payload includes a field that is not supported by the API resources.
- D. The submitted JSON payload has a formatting issue.

Answer: D

NEW QUESTION 39

Which two statements are true about Cisco UCS manager, Cisco Intersight APIs? (Choose two.)

- A. Cisco Intersight API interactions can be encoded in XML or JSON and require an APIs key in the HTTP header for authentication.
- B. USC Director API interactions can be XML- or JSON-encoded and require an APLs key in the HTTP header for authentication.
- C. UCS manager API interactions are XML-encoded and require a cookie in the method for authentication.
- D. Cisco Intersight uses XML to encoded API interactions and requires an API key pair for authentication.
- E. UCS manager uses JSON to encode API interactions and utilizes Base64-encoded credentials in the HTTP header for authentication.

Answer: BC

NEW QUESTION 44

Which two types of NAT are used in a network? (Choose two.)

- A. Static NAT
- B. Normal NAT
- C. Multicast NAT
- D. Dynamic NAT
- E. Router NAT

Answer: AD

NEW QUESTION 48

A developer is reviewing a code that was written by a colleague. It runs fine, but there are many lines of code to do a seemingly simple task repeatedly. Which action organizes the code?

- A. Refactor the code by removing any unnecessary tests
- B. Using functions, rewrite any pieces of code that are repeated
- C. Reverse engineer and rewrite the code logic
- D. Modify the code to use loops

Answer: B

NEW QUESTION 52

Refer to the exhibit.

List Rooms

List rooms.  
The `title` of the room for 1:1 rooms will be the display name of the other person.  
By default, lists rooms to which the authenticated user belongs.  
Long result sets will be split into `pages`.

GET /v1/rooms

Query Parameters

Name	Description
<code>teamId</code> string	List rooms associated with a team, by ID.
<code>type</code> string	List rooms by tape. <i>Possible values: direct, group</i>
<code>sortBy</code> string	Sort results. <i>Possible values: id, lastactivity, created</i>
<code>max</code> number	Limit the maximum number of rooms in the response.  Default: <code>100</code>

Given the API documentation for the UCS SDK python class, UcsHandle, which code snippet creates a handle instance?

HTTP GET /v1/rooms |

- A. Option A
- B. Option B
- C. Option C
- D. Option D

**Answer:** B

#### NEW QUESTION 57

Which two statement describe the role of an artifact repository in a CI/CD pipeline? (Choose two.)

- A. An artifact repository allows to compare and merge changes in the source code of files involved in a build process.
- B. An artifact repository is needed only for CI/CD pipeline executed on a public cloud infrastructure.
- C. An artifact repository provides traceability, search, and management of binary files.
- D. An artifact repository is needed only for managing open source software.
- E. An artifact repository stores files needed and generated during the build process.

**Answer:** CE

#### NEW QUESTION 60

On which port does NETCONF operate by default?

- A. 23
- B. 443
- C. 822
- D. 830

**Answer:** D

#### NEW QUESTION 64

Drag and drop the requests from the left into the correct order on the right to create and check the path trace between two devices using Cisco DNA center API.

HTTP GET /v1/rooms ?sortBy=lastactivity

- A. Mastered
- B. Not Mastered

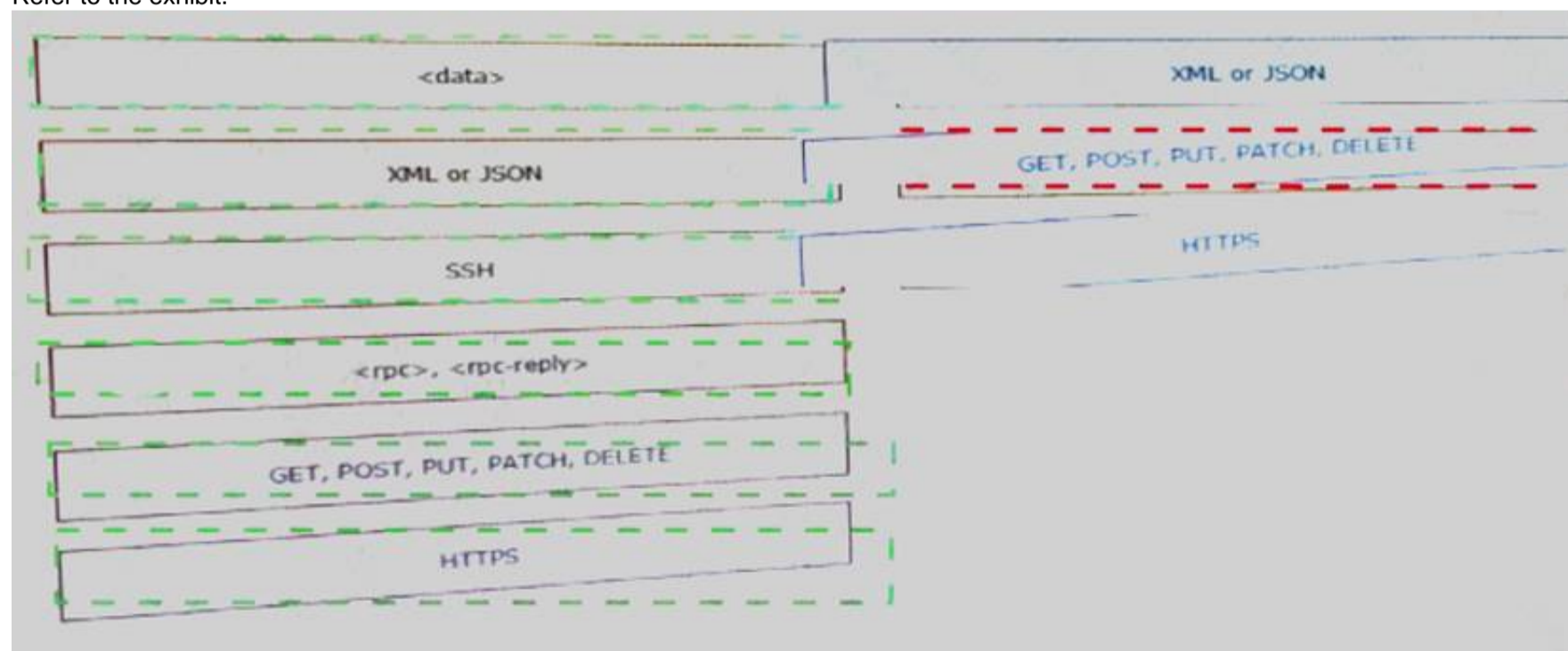
**Answer:** A

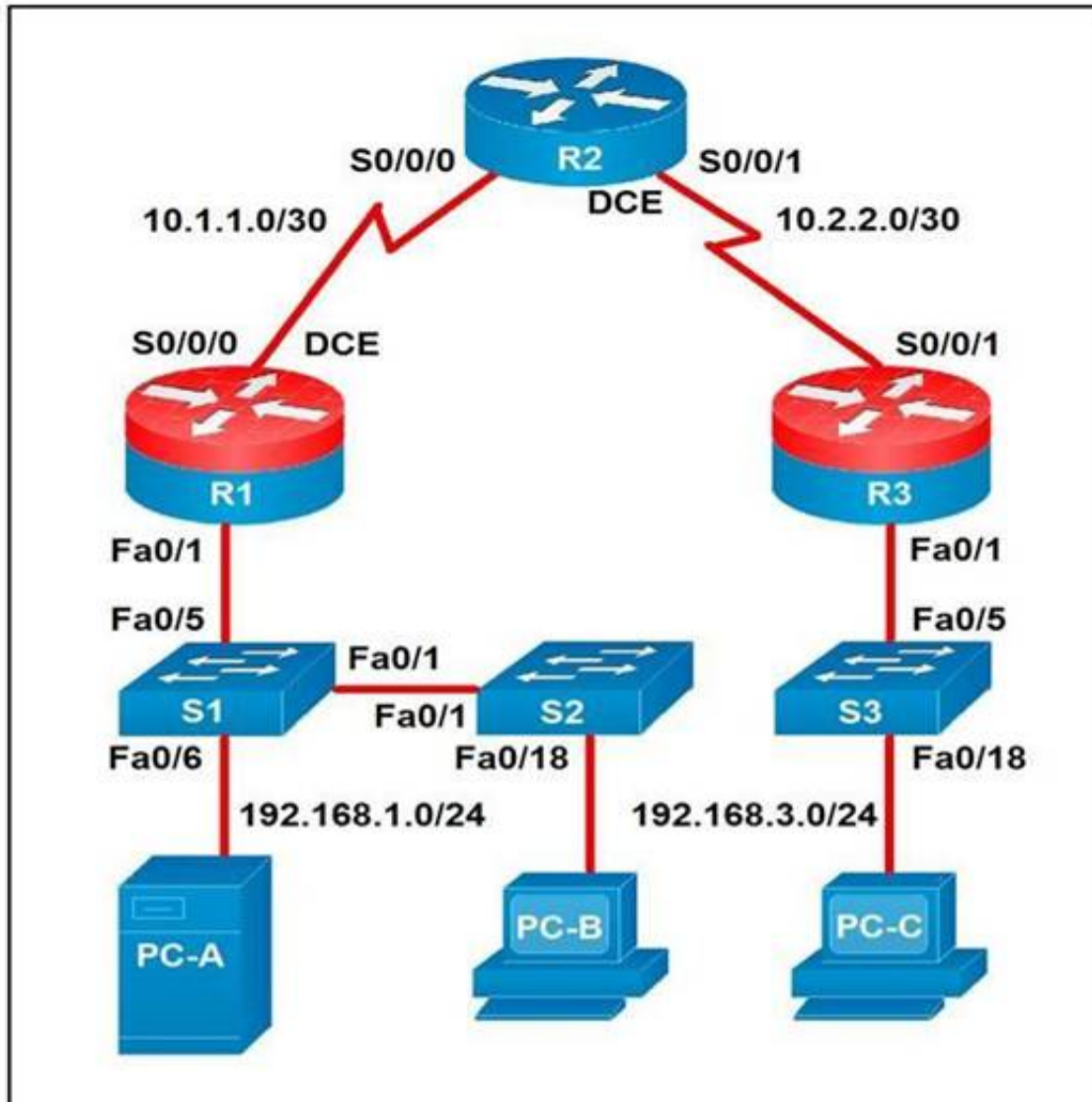
#### Explanation:

1 – C, 2 – D, 3 – B, 4 - A

#### NEW QUESTION 66

Refer to the exhibit.





A developer is troubleshooting an API with the given API with the given API documentation and cURL command. What is the cause of this problem?

- A. The user is not allowed to post messages from their account
- B. The request body is missing or incomplete
- C. The API token specified is expired
- D. The authorization header is missing or incomplete

**Answer: C**

#### NEW QUESTION 69

Drag and drop the HTTP methods from the left onto their generally accepted corresponding create, read, update, and delete operations on the right.

```
{
  "organization_id": <new_org_id>,
  "type": "wireless",
  "timeZone": "America/Los_Angeles",
  "tags": " test "
}
```

t. Fill in the blanks to complete the cURL command to list the networks in the Meraki organization with an Id of 384279060:

meraki.com/api/v0/organizations /384279060 /networks  
 -X-API-Key: 'Smeraki\_api\_key'

- A. Mastered
- B. Not Mastered

**Answer: A**

#### Explanation:

1 – D, 2 – B, 3 – C, 4 – E, 5 – A

#### NEW QUESTION 71

Refer to the exhibit.

ports are different broadcast domain by default	Firewall
ports can be in the same broadcast domain	Load Balancer
uses traffic inspection to make routing decisions	Router
blocks networks traffic by default	Switch

An administrator attempts to perform a GET using the Cisco IOS XE RESTOCNF API to return the hostname of a device. The sequence diagram illustrated the HTTP message observed. Which change to the API request resolves the issue?

- A. Add Content-Type HTTP header with 'application/yang-data+json' using -H 'Content-Type: application/yang-data+json'.
- B. Use -u cisco: cisco instead of -u 'cisco: cisco'.
- C. Change the request method from -X "GET" to- X' POST".
- D. Remove the -H 'Accept: application/yang-data^/son' HTTP header because it is not required.

Answer: B

NEW QUESTION 76

Which task is performed because the test-driven development approach is being used?

- A. testing existing software before developing new code
- B. refactoring code that is covered by existing tests
- C. writing code without committing any coding violations
- D. creating test scenarios based on continuous development

Answer: B

NEW QUESTION 78

In DNS, which record specifies an alias that refers to another name that ultimately resolves to an IP address?

- A. AAA
- B. SOA
- C. NS
- D. CNAME

Answer: D

NEW QUESTION 79

Drag and drop the element of the Finesse API on the left onto the description of its functionality on the right.

```
module ex-ethernet {
    namespace "http://example.com/Ethernet";
    prefix "eth";
    import ietf-interfaces {
        prefix if;
    }
    augment "/if:interfaces/if:interface" {
        when "if:type = 'ethernetCsmacd'";
        container ethernet {
            must "../if:location" {
                description
                    "An Ethernet interface must specify the physical location of the ethernet hardware.";
            }
            choice transmission-params {
                case auto {
                    leaf auto-negotiate {
                        type empty;
                    }
                }
                case manual {
                    leaf duplex {
                        type enumeration {
                            enum "half";
                            enum "full";
                        }
                    }
                    leaf speed {
                        type enumeration {
                            enum "10Mb";
                            enum "100Mb";
                            enum "1Gb";
                            enum "10Gb";
                        }
                    }
                }
            }
        }
    }
    // other ethernet specific params...
}
```

- A. Mastered  
 B. Not Mastered

Answer: A

Explanation:

1 – D, 2 – F, 3 – A, 4 – E, 5 – B, 6 – G, 7 - C

#### NEW QUESTION 84

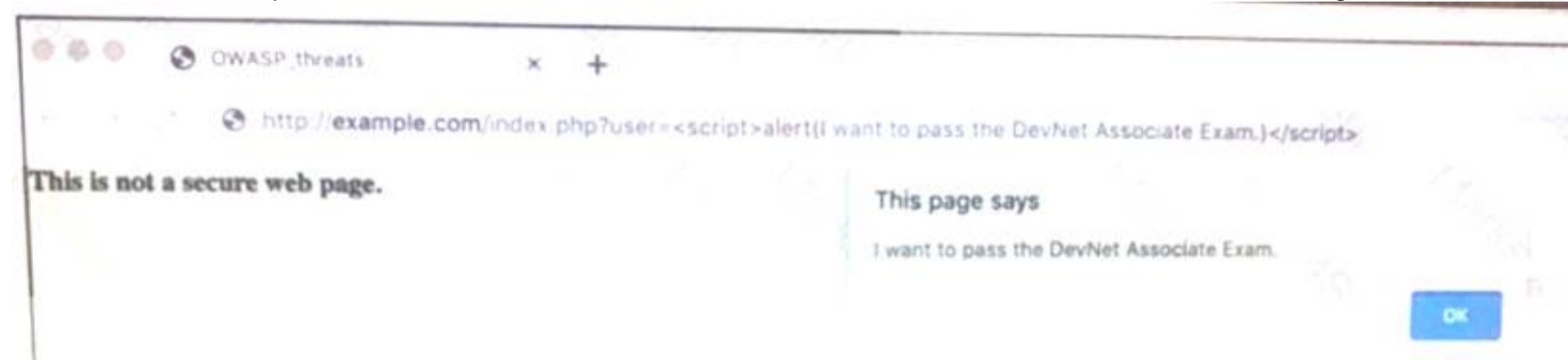
Which model-driven programmability protocol does Cisco IOS XE Software support?

- A. CORBA  
 B. SSH  
 C. gNMI  
 D. SOAP

Answer: C

#### NEW QUESTION 86

Fill in the blanks to complete the cURL command that invokes a RESTful API to retrieve a resource in JSON format using OAuth.



curl -X \_\_\_\_\_ -H " \_\_\_\_\_: application/json" \  
 -H " \_\_\_\_\_: Bearer AbCdEf123456" https://localhost/api/myresource

- A. Mastered  
 B. Not Mastered

Answer: A

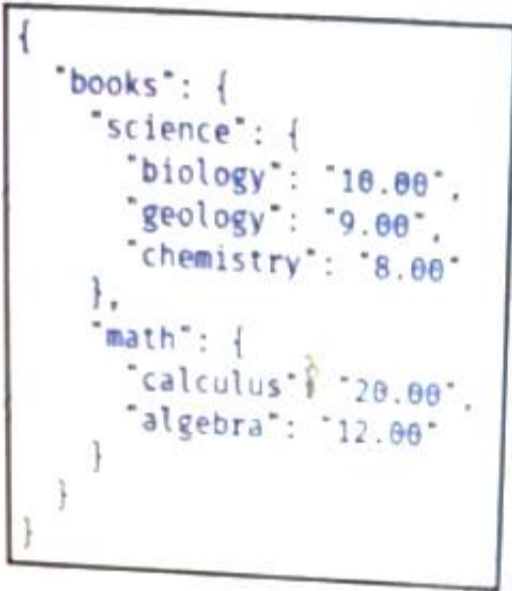
Explanation:

See the solution below.

```
<books>
  <science>
    <biology>10.00</biology>
    <geology>9.00</geology>
    <chemistry>8.00</chemistry>
  </science>
  <math>
    <calculus>20.00</calculus>
    <algebra>12.00</algebra>
  </math>
</books>
```

NEW QUESTION 91

Drag and drop the descriptions from the left onto correct application deployment models on the right.



- A. Mastered
- B. Not Mastered

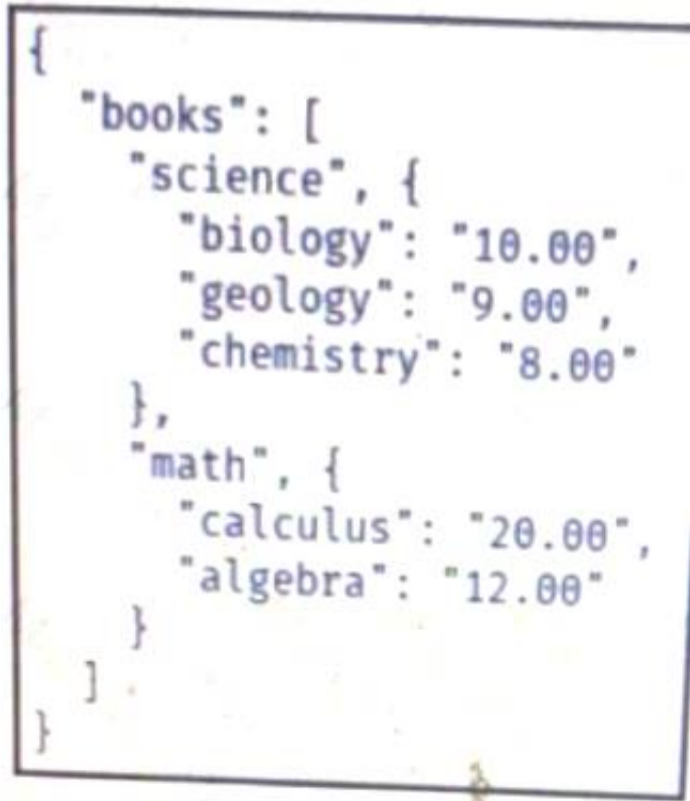
Answer: A

Explanation:

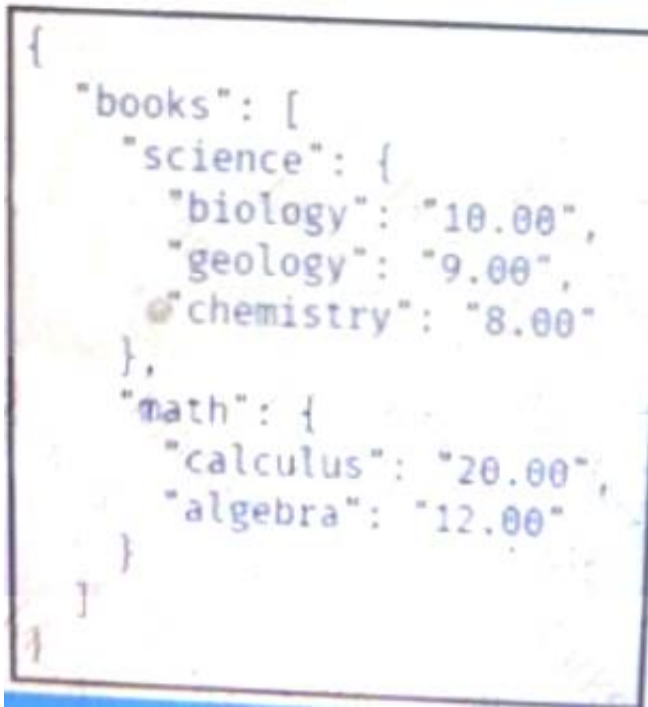
1 – B, 2 – E, 3 – C, 4 – D, 5 – A

NEW QUESTION 94

Refer to the exhibit.



Drag and drop the variables from the left onto the item numbers on the right that match the missing assignments in the exhibit.



- A. Mastered
- B. Not Mastered

Answer: A

Explanation:  
1 – A, 2 – C, 3 – B

NEW QUESTION 96

Which mechanism is used to consume a RESTful API design when large amounts of data are returned?

- A. Data sets
- B. Scrolling
- C. Blobs
- D. Pagination

Answer: D

NEW QUESTION 98

Which two descriptions can be given to an application that is interacting with a webhook? (Choose two.)

- A. Processor
- B. Codec
- C. Listener
- D. Receiver
- E. Transaction monitor

Answer: CD

NEW QUESTION 102

Which two encoding formats do YANG interfaces support?

- A. JSON
- B. XML
- C. XHTML
- D. Plain text
- E. BER

Answer: AB

NEW QUESTION 106

Drag and drop the HTTP status codes from the left onto the correct descriptions on the right.

GET /api/v1/flow-analysis/{flowAnalysisId}	POST /api/system/v1/auth/token
POST /api/v1/flow-analysis	GET /api/v1/network-device/ and choose IP of source and destination devices
POST /api/system/v1/auth/token	POST /api/v1/flow-analysis
GET /api/v1/network-device/ and choose IP of source and destination devices	GET /api/v1/flow-analysis/{flowAnalysisId}

- A. Mastered
- B. Not Mastered

**Answer:** A

**Explanation:**

1 – B, 2 – D, 3 – A, 4 – C

#### NEW QUESTION 108

Which type of threat occur when an attacker can send hostile data to an interpreter within an application?

- A. Cross-site scripting
- B. Sensitive data exposure
- C. Broken authentication
- D. Injection

**Answer:** D

#### NEW QUESTION 110

A company has written a script that creates a log bundle from the Cisco DNA Center every day. The script runs without error and the bundles are produced. However, when the script is run during business hours, report poor voice quality of phones calls. What explains this behavior?

- A. The application is running in the Voice VLAN and causes delays and jitter in the subnet.
- B. The speed and duplex settings in Cisco DNA Center are sot incorrectly, which causes the transfer to be too slow.
- C. 9 The script is written in a low-level programming language where there is no memory safet
- D. This causes a buffer overflow and disruption on the network.
- E. Generating the logs causes the CPU on the network controller to spike, which causes delays m forwarding the voice IP packets.

**Answer:** D

#### NEW QUESTION 114

Fill in the blanks to complete the statement.

Given a username of “devnet” And a password “Cisco123”, applications must create a base64 encoding of the string”\_\_\_\_\_” when sanding HTTP requests to an API that uses \_\_\_\_\_ authentication.

Cisco DNA Center provides the capability to send an HTTP  request to the API endpoint  and receive the network  list in  format.

- A. Mastered
- B. Not Mastered

**Answer:** A

**Explanation:**

```
docker run -p 3000:5000 f877cbf2ff33
```

#### NEW QUESTION 115

Which statement describes the benefit of using functions in programming?

- A. Functions allow problems to be split into simpler, smaller groups, and reduce code repetition, which makes the code easier to read.
- B. Functions ensure that a developer understands the inner logic contained before using them as part of a script or application.
- C. Functions create the implementation of secret and encrypted algorithms.
- D. Functions store mutable values within a script 01 application.

**Answer:** A

#### NEW QUESTION 116

Which two concepts describe test-driven development? (Choose two.)

- A. It enables code refactoring.
- B. Write a test before writing code.
- C. Implementation is driven by incremental testing of release candidates.
- D. User acceptance testers development the test requirements.
- E. Tests are created when code is ready for release.

**Answer:** BC

#### NEW QUESTION 118

Which two elements are foundational principles of DevOps? (Choose two.)

- A. designing applications as microservices
- B. encouraging containers for the deployment of applications
- C. organizing cross-functional teams over organizational silos

- D. optimizing the cost of infrastructures
- E. automating over documenting

Answer: CE

NEW QUESTION 120

Refer to the exhibit.

git push

git add .

git checkout -b "new branch"

git commit -m "this is my edit"

git pull

git add .

git commit -m "this is my edit"

git push

SSH

HTTP

HTTP/2

HTTPS

gRPC

NETCONF

RESTCONF

Drag and drop the code from the left onto the item numbers on the right to complete to Meraki python script shown in the exhibit.

SSH

HTTP

HTTP/2

HTTPS

gRPC

HTTP/2

NETCONF

SSH

RESTCONF

HTTP

HTTPS

- A. Mastered
- B. Not Mastered

Answer: A

Explanation:

1 – D, 2 – A, 3 – H, 4 – F, 5 – G, 6 – E, 7 – C, 8 – B

NEW QUESTION 122

.....

## Thank You for Trying Our Product

### We offer two products:

1st - We have Practice Tests Software with Actual Exam Questions

2nd - Questions and Answers in PDF Format

### 200-901 Practice Exam Features:

- \* 200-901 Questions and Answers Updated Frequently
- \* 200-901 Practice Questions Verified by Expert Senior Certified Staff
- \* 200-901 Most Realistic Questions that Guarantee you a Pass on Your First Try
- \* 200-901 Practice Test Questions in Multiple Choice Formats and Updates for 1 Year

**100% Actual & Verified — Instant Download, Please Click**  
**[Order The 200-901 Practice Test Here](#)**