

Exam Questions JK0-023

CompTIA Network+ certification

<https://www.2passeasy.com/dumps/JK0-023/>



NEW QUESTION 1

- (Exam Topic 1)

For which of the following reasons could a single server's NIC transmit packets from multiple MAC address sources?

- A. The server contains several virtual machines and the MAC addresses are from the virtual machines.
- B. The server is hosting a web server and the MAC addresses are from connected browsers.
- C. The server is hosting a proxy server and the MAC addresses are from the connected clients.
- D. The server NIC is starting to fail and should be replaced.

Answer: A

NEW QUESTION 2

- (Exam Topic 1)

Which of the following operates at OSI layer 2 to forward traffic based on the MAC address?

- A. Switch
- B. Proxy Server
- C. Router
- D. VPN Concentrator

Answer: A

NEW QUESTION 3

- (Exam Topic 1)

Which of the following differentiates a layer 3 switch from a layer 2 switch?

- A. Routing
- B. Bridging
- C. Switching
- D. Repeating

Answer: A

NEW QUESTION 4

- (Exam Topic 1)

Kurt, a network technician, has been troubleshooting a connectivity problem in the LAN room. He has diagnosed the problem and implemented a solution. Which of the following would be Kurt's NEXT step?

- A. Test the theory
- B. Establish a plan of action
- C. Establish a theory
- D. Document findings

Answer: D

NEW QUESTION 5

- (Exam Topic 1)

The APIPA address 169.254.10.123 falls into which of the following class of addresses?

- A. A
- B. B
- C. C
- D. D

Answer: B

NEW QUESTION 6

- (Exam Topic 1)

Which of the following protocols are used to provide accurate time to network devices?

- A. SMTP
- B. FTP
- C. TLS
- D. NTP

Answer: D

NEW QUESTION 7

- (Exam Topic 1)

An administrator has set up a NIPS and connected it to the same switch as the internal firewall interface and the internal router. The device, however, only detects traffic from itself to the firewall or router. Which of the following explains why additional corporate traffic cannot be detected?

- A. The spanning tree protocol is preventing the traffic.
- B. Port Mirroring is set up incorrectly.
- C. The switch needs to be a layer 3 switch.

D. The traffic is in a classless IP range and not classful IP range.

Answer: B

NEW QUESTION 8

- (Exam Topic 1)

Which of the following would be used to run an instance of a Layer 2 device within an application?

- A. Virtual switch
- B. Virtual router
- C. Virtual PBX
- D. NaaS

Answer: A

NEW QUESTION 9

- (Exam Topic 1)

Kurt, a user, cannot access any network resources. The technician has determined that the problem is isolated to Kurt, and that there have not been any changes to his workstation or switch port recently. Which of the following steps in the troubleshooting methodology should the technician do NEXT?

- A. Establish a plan of action to resolve the problem.
- B. Implement preventative measures.
- C. Implement the solution or escalate as necessary.
- D. Establish a theory of probable cause.

Answer: D

NEW QUESTION 10

- (Exam Topic 1)

Which of the following describes the amount of time it takes for a packet to transmit from one switch to another?

- A. Hop count
- B. Latency
- C. MTU limit
- D. Distance vector

Answer: B

NEW QUESTION 10

- (Exam Topic 1)

Frames are the Protocol Data Unit for which of the following layers of the OSI model?

- A. Layer 1
- B. Layer 2
- C. Layer 3
- D. Layer 4

Answer: B

NEW QUESTION 12

- (Exam Topic 1)

The BEST way to determine the next hop of a packet is to check the:

- A. link state
- B. routing table
- C. routing metrics
- D. convergence

Answer: B

NEW QUESTION 13

- (Exam Topic 1)

Which of the following OSI layers is responsible for encrypting HTTPS traffic?

- A. 3
- B. 4
- C. 5
- D. 6

Answer: D

NEW QUESTION 17

- (Exam Topic 1)

Which of the following TCP/IP model layers combines four OSI model layers?

- A. Application Layer
- B. Internet Layer
- C. Transport Layer
- D. Network Interface Layer

Answer: A

NEW QUESTION 21

- (Exam Topic 1)

Which of the following subnet masks would allow for 192.168.0.3 and 192.168.0.240 to be in the same subnet?

- A. 255.255.255.0
- B. 255.255.255.128
- C. 255.255.255.192
- D. 255.255.255.248

Answer: A

NEW QUESTION 22

- (Exam Topic 1)

Which of the following protocols uses port 3389 by default?

- A. RDP
- B. TFTP
- C. IMAP
- D. DNS

Answer: A

NEW QUESTION 27

- (Exam Topic 1)

Zach, a network administrator, wants to separate the network into broadcast domains. Which of the following can he use? (Select TWO).

- A. WAPs
- B. Routers
- C. Patch panels
- D. Hubs
- E. Bridges
- F. VLANs

Answer: BF

NEW QUESTION 30

- (Exam Topic 1)

A firewall that operates at Layer 7 of the OSI model is known as a(n):

- A. Circuit gateway.
- B. Packet filter.
- C. Application level.
- D. Redundant firewall.

Answer: C

NEW QUESTION 31

- (Exam Topic 1)

Which of the following layers of the OSI model is responsible for stripping the TCP port information before sending the packet up to the next layer?

- A. 2
- B. 3
- C. 4
- D. 5

Answer: C

NEW QUESTION 36

- (Exam Topic 1)

Which of the following is the MOST appropriate to use when routing Internet traffic through multiple ISP connections?

- A. BGP
- B. SNAT
- C. RIP
- D. GPG

Answer: A

NEW QUESTION 38

- (Exam Topic 1)

Creating a uniform user environment throughout the network can BEST be achieved by using which of the following?

- A. Honeypots
- B. Virtual switches
- C. Virtual PBX
- D. Virtual desktops

Answer: D

NEW QUESTION 42

- (Exam Topic 1)

In order for switching loops to be automatically disabled, which of the following needs to be implemented?

- A. Routing tables
- B. Collision domains
- C. Port mirroring
- D. Spanning-tree protocol

Answer: D

NEW QUESTION 47

- (Exam Topic 1)

Which of the following OSI layers performs error detection using a Frame Check Sequence?

- A. Session
- B. Transport
- C. Physical
- D. Data link

Answer: D

NEW QUESTION 48

- (Exam Topic 1)

Which of the following represents the physical address of a network access card?

- A. FF01:D2:C4:87::11
- B. 00-30-48-83-9B-C8
- C. 08-9D-35-22-L2-34-FF-21
- D. 2D1A:C3:0:1C3B:2AD:FF:FEFE:9D3A

Answer: B

NEW QUESTION 51

- (Exam Topic 1)

Which of the following exist at layer three of the OSI model? (Select TWO).

- A. NIC
- B. Switch
- C. Frame
- D. Packet
- E. Router
- F. Cable

Answer: DE

NEW QUESTION 52

- (Exam Topic 1)

Which of the following protocols is used to send time synchronization updates on a given network?

- A. NTP
- B. POP3
- C. DNS
- D. IMAP

Answer: A

NEW QUESTION 54

- (Exam Topic 1)

A technician is developing a shortcut sheet for the network to be able to assist in future troubleshooting scenarios. Which of the following should the network devices have to ease manageability efforts?

- A. MAC spoofing
- B. Dynamic IPs
- C. MAC filtering
- D. Static IPs

Answer: D

NEW QUESTION 55

- (Exam Topic 1)

Which of the following are considered unsecure access methods? (Select TWO).

- A. FTP
- B. IPSec
- C. RCP
- D. SCP
- E. SFTP

Answer: AC

NEW QUESTION 60

- (Exam Topic 1)

Which of the following uses port 23 by default?

- A. TELNET
- B. IMAP
- C. FTP
- D. SNMP

Answer: A

NEW QUESTION 65

- (Exam Topic 1)

Logically separating the ports on a switch without physically separating them can be done using which of the following?

- A. Routing tables
- B. Hub logic
- C. Spanning tree protocol
- D. VLANs

Answer: D

NEW QUESTION 67

- (Exam Topic 1)

A forward lookup zone converts which of the following?

- A. IP addresses to hostnames
- B. Hostnames to IP addresses
- C. MAC addresses to IP addresses
- D. IP Addresses to MAC addresses

Answer: B

NEW QUESTION 71

- (Exam Topic 1)

Which of the following is a purpose of a VLAN?

- A. Decreases bandwidth on a network
- B. Segments broadcast traffic
- C. Increases port speed
- D. Allows another connection to the router

Answer: B

NEW QUESTION 73

- (Exam Topic 1)

Which TCP/IP model layer does the OSI model layer named 'session' respond to?

- A. Application
- B. Presentation
- C. Internet
- D. Transport

Answer: A

NEW QUESTION 77

- (Exam Topic 1)

Which of the following uses a 128-bit addressing scheme?

- A. MAC
- B. DHCP

- C. IPv4
- D. IPv6

Answer: D

NEW QUESTION 80

- (Exam Topic 1)

Jeff, a user, can no longer access the accounting file share, but others are still able to access the share. Which of the following would be the FIRST step in troubleshooting the issue?

- A. Notify senior management of the issue.
- B. Develop a probable cause theory.
- C. Ask Jeff if anything has changed on the system.
- D. Escalate the issue to the vendor.

Answer: C

NEW QUESTION 82

- (Exam Topic 1)

A network consultant arrives at a customer's site to troubleshoot their email server. The server is running a Linux operating system, but the consultant is only familiar with Windows operating systems. Which of the following troubleshooting steps should the consultant take?

- A. Document findings
- B. Identify the problem
- C. Escalate the problem
- D. Establish a plan of action

Answer: C

NEW QUESTION 85

- (Exam Topic 1)

Which of the following is the broadcast address for a network defined as 192.168.0.0/24?

- A. 192.168.0.255
- B. 192.168.0.1
- C. 192.168.0.0
- D. 192.168.0.253

Answer: A

NEW QUESTION 86

- (Exam Topic 1)

Which of the following records allows for reverse DNS lookups?

- A. AAAA
- B. A
- C. PTR
- D. CNAME

Answer: C

NEW QUESTION 88

- (Exam Topic 1)

Which of the following services are affected by closing the default ports of 80 and 21 via ACL on a company router?

- A. FTP and basic Internet traffic
- B. HTTPS and IMAP traffic
- C. DNS and TELNET traffic
- D. VPN and RDP traffic

Answer: A

NEW QUESTION 91

- (Exam Topic 1)

STP prevents which of the following problems?

- A. Collision domains
- B. Switching loops
- C. Broadcast storms
- D. Routing loops

Answer: B

NEW QUESTION 95

- (Exam Topic 1)

An administrator is using a packet sniffer to try to determine what is causing the traffic on the network. The administrator sees a lot of packets on port 25. Which of the following traffic types is MOST likely using port 25?

- A. SMTP
- B. SSH
- C. DNS
- D. TELNET

Answer: A

NEW QUESTION 96

- (Exam Topic 1)

Which of the following uses distance vector algorithms to determine the BEST network route to a destination address?

- A. IS-IS
- B. OSPF
- C. BGP
- D. RIP

Answer: D

NEW QUESTION 99

- (Exam Topic 1)

Which of the following is the common port used for IMAP?

- A. 25
- B. 53
- C. 143
- D. 443

Answer: C

NEW QUESTION 100

- (Exam Topic 1)

Which of the following layers of the OSI model maps to the Network Interface layer of the TCP stack? (Select TWO).

- A. Physical
- B. Session
- C. Data Link
- D. Network
- E. Transport

Answer: AC

NEW QUESTION 104

- (Exam Topic 1)

Joe has a small office and is looking to replace his phone system with a lower cost solution that requires minimal in-house support. Which of the following is the BEST choice?

- A. Wide Area Network
- B. NAT
- C. Virtual PBX
- D. Virtual LAN

Answer: C

NEW QUESTION 108

- (Exam Topic 1)

A user is having difficulty connecting a laptop to the company's network via a wireless connection. The user can connect to the network via a wired NIC. The technician thinks the user's wireless NIC has failed. Which of the following network troubleshooting methodology steps should the technician perform NEXT?

- A. Test the theory to determine the cause.
- B. Implement the solution or escalate as necessary.
- C. Establish a plan of action to resolve the problem.
- D. Re-establish new theory or escalate.

Answer: A

NEW QUESTION 110

- (Exam Topic 1)

Which of the following ports are MOST commonly used to interactively configure a networking device? (Select TWO).

- A. 21
- B. 22
- C. 23
- D. 53
- E. 67

Answer: BC

NEW QUESTION 114

- (Exam Topic 1)

Which of the following protocols is MOST commonly associated with VoIP?

- A. LDAP
- B. HTTPS
- C. SIP
- D. SCP

Answer: C

NEW QUESTION 116

- (Exam Topic 1)

Which of the following uses types and codes rather than ports?

- A. EIGRP
- B. ICMP
- C. UDP
- D. IPv6

Answer: B

NEW QUESTION 119

- (Exam Topic 1)

Which of the following reside at a minimum of Layer 3 of the OSI model? (Select TWO).

- A. Hub
- B. Switch
- C. MAC address
- D. IP address
- E. Router

Answer: DE

NEW QUESTION 121

- (Exam Topic 1)

Which of the following BEST describes how a layer 2 switch functions?

- A. Switches packets within the same subnet based on MAC addresses
- B. Switches packets between different subnets based on IP addresses
- C. Switches packets between different subnets based on MAC addresses
- D. Switches packets within the same subnet based on IP addresses

Answer: A

NEW QUESTION 123

- (Exam Topic 1)

A web server that provides shopping cart capabilities for external end users will likely function with which of the following protocols?

- A. HTTPS
- B. POP3
- C. SSH
- D. SMTP

Answer: A

NEW QUESTION 126

- (Exam Topic 1)

A technician finds that the network card is no longer functioning. At which of the following OSI layers is the problem occurring?

- A. Layer 1
- B. Layer 3
- C. Layer 5
- D. Layer 7

Answer: A

NEW QUESTION 130

- (Exam Topic 1)

Which of the following OSI layers BEST describes where an HTTP proxy operates?

- A. Transport
- B. Application

C. Presentation
D. Session

Answer: B

NEW QUESTION 133

- (Exam Topic 1)

DHCP uses which of the following ports by default?

- A. 21
- B. 23
- C. 68
- D. 443

Answer: C

NEW QUESTION 135

- (Exam Topic 2)

Which of the following fiber types is MOST often used indoors?

- A. Plenum
- B. Modal conditioning
- C. Multimode
- D. Singlemode

Answer: C

NEW QUESTION 137

- (Exam Topic 2)

Users notice a problem with their network connectivity when additional lights are turned on. Which of the following would be the cause for this problem?

- A. DDOS
- B. Cross talk
- C. Open short
- D. EMI

Answer: D

NEW QUESTION 138

- (Exam Topic 2)

Which of the following technologies allows more than two transceivers with an access point?

- A. MIMO
- B. FIFO
- C. 802.1x
- D. WPA

Answer: A

NEW QUESTION 140

- (Exam Topic 2)

Which of the following 802.3 classifications has a MAXIMUM segment distance of 984 feet (300 meters)?

- A. 1000Base
- B. 100BaseFX
- C. 1000BaseSX
- D. 1000BaseT

Answer: C

NEW QUESTION 141

- (Exam Topic 2)

Which of the following technologies is used on cellular networks?

- A. Ethernet
- B. CDMA
- C. CSMA/CA
- D. POTS

Answer: B

NEW QUESTION 145

- (Exam Topic 2)

Zach, an administrator, needs to install a new 100 foot (30 meter) cable run from an IDF switch to the MDF, through a room that has a large number of motors.

Which of the following would be the BEST cable type to choose?

- A. CAT3
- B. STP
- C. Coaxial
- D. Fiber

Answer: D

NEW QUESTION 149

- (Exam Topic 2)

* 802.11 n can operate at which of the following frequencies? (Select TWO).

- A. 2.4Mhz
- B. 2.5Mhz
- C. 5Mhz
- D. 2.4Ghz
- E. 2.5Ghz
- F. 5Ghz

Answer: DF

NEW QUESTION 154

- (Exam Topic 2)

Which of the following is rated for speeds over 800Mbps?

- A. Coaxial
- B. DB-9
- C. CAT6
- D. CAT5e

Answer: C

NEW QUESTION 157

- (Exam Topic 2)

A network administrator tests a multimode fiber cable from end-to-end on a new link that is down and notices that the dB loss is -.09. Which of the following is the MOST likely cause?

- A. TXRX reversed
- B. dB loss too high
- C. dB loss too low
- D. Bad connectors

Answer: A

NEW QUESTION 159

- (Exam Topic 2)

Which of the following has the HIGHEST data rate speed?

- A. T1
- B. ADSL
- C. SDSL
- D. OC-3

Answer: D

NEW QUESTION 162

- (Exam Topic 2)

Karen, a technician, is installing network cables for an office building. Some of the cables are not showing active on the switch even when moved to different ports. Which of the following is MOST likely the cause?

- A. Port speed mismatch
- B. Faulty F-connectors
- C. Bad wiring
- D. Bad switch

Answer: C

NEW QUESTION 164

- (Exam Topic 2)

Which of the following is the FASTEST Ethernet technology?

- A. 10GBaseSR
- B. 10BaseT
- C. 100BaseFX
- D. 1000BaseT

Answer: A

NEW QUESTION 166

- (Exam Topic 2)

In a small office environment, one computer is set up to provide Internet access to three other computers that are not interconnected. This is an example of which of the following topology types?

- A. Peer-to-peer
- B. Point-to-multipoint
- C. Hybrid
- D. Point-to-point

Answer: B

NEW QUESTION 171

- (Exam Topic 2)

T568B wiring scheme is typically found on which of the following components?

- A. Demarc extension
- B. 66 block
- C. Patch panel
- D. Vertical cross connect

Answer: C

NEW QUESTION 175

- (Exam Topic 2)

A technician notices a newly installed CAT5 cable is longer than the standard maximum length. Which of the following problems would this MOST likely cause?

- A. Split cable
- B. EMI
- C. DB loss
- D. Crosstalk

Answer: C

NEW QUESTION 179

- (Exam Topic 2)

A patch cable terminated with one end as T568A and the other as T568B will create which of the following cable types?

- A. Crossover
- B. Serial
- C. Roll over
- D. Straight through

Answer: A

NEW QUESTION 184

- (Exam Topic 2)

Which of the following cable types allows for the LONGEST distance of a Gigabit Ethernet connection?

- A. Multimode fiber
- B. CAT6a
- C. Single mode fiber
- D. Coaxial

Answer: C

NEW QUESTION 187

- (Exam Topic 2)

The network technician needs to install fiber cabling to connect two buildings less than 984 feet (300 meters) apart. Which of the following fiber types should be installed?

- A. Singlemode
- B. Multimode
- C. Crossover
- D. F-Connector

Answer: B

NEW QUESTION 190

- (Exam Topic 2)

When examining a suspected faulty copper network cable, Kim, the administrator, notices that some of the pairs are untwisted too much. This is MOST likely causing which of the following?

- A. DB loss
- B. Dispersion
- C. Collisions
- D. Cross-talk

Answer: D

NEW QUESTION 193

- (Exam Topic 2)

In contrast to earlier Wi-Fi speeds, which of the following BEST describes the antenna and channelization properties used in 802.11n?

- A. MIMO, DSSS
- B. MIMO, OFDM
- C. CSMA, DSSS
- D. CSMA, CDMA

Answer: B

NEW QUESTION 197

- (Exam Topic 2)

Which of the following is MOST likely used with RG-6 media?

- A. MTRJ
- B. RJ-11
- C. RJ-45
- D. F-connector

Answer: D

NEW QUESTION 198

- (Exam Topic 2)

The ISP needs to terminate the WAN connection. The connection should be located in the network server room where the company LAN equipment resides. Which of the following identifies the location?

- A. Smart jack
- B. MDF
- C. VPN
- D. 66 block

Answer: B

NEW QUESTION 199

- (Exam Topic 2)

Ann, a technician, is installing network cables for an office building. Some of the cables are not showing active on the switch even when moved to different ports. Which of the following is MOST likely the cause?

- A. Port speed mismatch
- B. Faulty F-connectors
- C. Bad wiring
- D. Bad switch

Answer: C

NEW QUESTION 201

- (Exam Topic 2)

A user would like to connect two laptops together and transfer files via the Ethernet ports. Which of the following should MOST likely be provided to the user to accomplish this?

- A. Crossover
- B. Rollover
- C. Loopback
- D. Straight cable

Answer: A

NEW QUESTION 204

- (Exam Topic 2)

Which of the following connectors push and twist-on?

- A. LC
- B. SC
- C. ST
- D. RJ-45

Answer: C

NEW QUESTION 206

- (Exam Topic 2)

Sandy, an administrator, needs to install a wireless network that will allow legacy devices to connect to the network and also offer both 5GHz and 2.4GHz frequencies. Which of the following would BEST describe the type of WAP needed?

- A. 802.11a
- B. 802.11b
- C. 802.11g
- D. 802.11n

Answer: D

NEW QUESTION 211

- (Exam Topic 2)

Which of the following 802.11 standards transmits the signals the GREATEST distance?

- A. a
- B. b
- C. g
- D. n

Answer: D

NEW QUESTION 216

- (Exam Topic 2)

After Karen, a new user, moves furniture into a cubicle, the computer does not connect to the network any longer. Which of the following would be the MOST likely reason? (Select TWO).

- A. Bad Ethernet switch port
- B. TX/RX reversed
- C. Bad connectors
- D. Bad patch cable
- E. Mismatched MTU

Answer: CD

NEW QUESTION 221

- (Exam Topic 2)

CAT6 Ethernet cabling has a rated maximum transmission capability of:

- A. 10Mbps
- B. 100Mbps
- C. 20,000Mbps
- D. 10,000Mbps

Answer: D

NEW QUESTION 223

- (Exam Topic 2)

A technician has been dispatched to investigate connectivity problems of a recently renovated office. The technician has found that the cubicles were wired so that the network cables were run inside the conduit with the electrical cabling. Which of the following would MOST likely resolve the connectivity issue?

- A. Power-cycle the computers and switches to re-establish the network connection.
- B. Re-run the network cabling through the ceiling alongside the lights to prevent interference.
- C. Test the wiring in the network jacks for faults using a cable verifier.
- D. Re-run the network cabling so that they are 12 inches or more away from the electrical lines.

Answer: D

NEW QUESTION 224

- (Exam Topic 2)

Which of the following is a fiber connector type?

- A. F-connector
- B. RJ-11
- C. RS-232
- D. MTRJ

Answer: D

NEW QUESTION 228

- (Exam Topic 2)

At which of the following locations does the responsibility of a Telco provider cease?

- A. IDF
- B. CSU
- C. Demarc
- D. MDF

Answer: C

NEW QUESTION 232

- (Exam Topic 2)

Which of the following defines a rack located in an office building between the main rack and other office equipment?

- A. DSU
- B. MDF
- C. CSU
- D. IDF

Answer: D

NEW QUESTION 236

- (Exam Topic 2)

Which of the following uses a ring topology?

- A. DSL
- B. Ethernet
- C. DOCSIS
- D. SONET

Answer: D

NEW QUESTION 241

- (Exam Topic 2)

Which of the following is the radio frequency and data rate for 802.11g as specified by the IEEE standards?

- A. 2.0 GHz at 33 Mbps
- B. 2.4 GHz at 54 Mbps
- C. 2.4 GHz at 128 Mbps
- D. 5.0 GHz at 54 Mbps

Answer: B

NEW QUESTION 242

- (Exam Topic 2)

Which of the following supports faster wireless broadband speeds?

- A. Satellite
- B. WiMAX
- C. ISDN
- D. OC-3

Answer: B

NEW QUESTION 247

- (Exam Topic 2)

Which of the following uses copper wiring?

- A. 10GBaseER
- B. 10GBaseLW
- C. 100BaseFX
- D. 1000BaseT

Answer: D

NEW QUESTION 249

- (Exam Topic 3)

Which of the following could Kim, a network technician, use to inspect connection setup, request, and response headers for users connecting to a web server?

- A. nbtstat command
- B. dig command
- C. ipconfig command
- D. Protocol analyzer

Answer: D

NEW QUESTION 253

- (Exam Topic 3)

When troubleshooting a connectivity issue, which of the following commands will give Joe, the technician, a list of the host names connected to the network?

- A. ping
- B. nbstat
- C. arp
- D. msconfig

Answer: B

NEW QUESTION 258

- (Exam Topic 3)

Which of the following devices should Jeff, an administrator, connect to a protocol analyzer in order to collect all of the traffic on a LAN segment?

- A. Hub
- B. VLAN
- C. Router
- D. Server

Answer: A

NEW QUESTION 262

- (Exam Topic 3)

Which of the following is used to restrict access according to user policies?

- A. Content filter
- B. DHCP server
- C. DNS server
- D. VPN concentrator

Answer: A

NEW QUESTION 265

- (Exam Topic 3)

Which of the following is used to limit the amount of bandwidth used on a link for different applications to improve overall performance?

- A. QoS
- B. Fault tolerance
- C. Load balancing
- D. Traffic shaping

Answer: D

NEW QUESTION 270

- (Exam Topic 3)

A content filter is MOST likely installed on which of the following servers?

- A. Proxy server
- B. TACACS+ server
- C. DNS server
- D. DHCP server

Answer: A

NEW QUESTION 272

- (Exam Topic 3)

A network technician has been asked to look into a report from the IDS to determine why traffic is being sent from an internal FTP server to an external website.

Which of the following tools can be used to inspect this traffic?

- A. Router firewall
- B. Ping and traceroute
- C. Throughput tester
- D. Protocol analyzer

Answer: D

NEW QUESTION 277

- (Exam Topic 3)

Which of the following protocols could the below packet capture be from?

Port: 161

msgVersion: <masked> msgUsername: <masked>

msgAuthenticationParameters: <masked> msgPrivacyParameters: <masked> msgData:

data: get-request

request-id: <masked> error-status: noError (0)

error-index: 0

variable-bindings: 0 items

- A. SNMPv3
- B. SSH
- C. HTTP
- D. SNMPv1

Answer: A

NEW QUESTION 280

- (Exam Topic 3)

Which of the following network performance optimization methods allows for frequently accessed sites to be housed locally, thereby reducing bandwidth requirements?

- A. Load balancing
- B. Traffic policing
- C. Caching engines
- D. Traffic shaping

Answer: C

NEW QUESTION 283

- (Exam Topic 3)

Which of the following performance benefits would multiple domain controllers BEST provide?

- A. Fault tolerance
- B. Caching engine
- C. Proxy server
- D. Quality of service

Answer: A

NEW QUESTION 287

- (Exam Topic 3)

Which of the following network protocols would be used to transmit traps across a network to a log server?

- A. SMTP
- B. PPPoE
- C. POP3
- D. SNMP

Answer: D

NEW QUESTION 291

- (Exam Topic 3)

Lisa, a technician, is asked to install a wireless router in a company's public café area. The company wants the public to be able to connect to the wireless network with minimal security, but not be able to connect to the private internal network. Which of the following firewall rules would BEST accomplish this?

- A. Content filtering on the wireless access point
- B. Allow traffic from the wireless access point
- C. Block traffic from the wireless access point
- D. Packet filtering on the wireless access point

Answer: C

NEW QUESTION 293

- (Exam Topic 3)

A company is experiencing a denial of service attack and wants to identify the source IP address of the attacker in real time. Which method is the BEST way to accomplish this?

- A. Network sniffer
- B. Syslog
- C. SNMPv3
- D. System logs

Answer: A

NEW QUESTION 296

- (Exam Topic 3)

A company is expanding and has found that logging into each device to collect error information is consuming too much time. They have asked Lisa, a network administrator, to set up a server that will capture errors from each device automatically. Which of the following technologies would BEST fit this requirement?

- A. Syslog
- B. RADIUS
- C. IPSec
- D. Network sniffer

Answer: A

NEW QUESTION 301

- (Exam Topic 3)

A user is having trouble with their fax machine disconnecting during transmissions. The technician believes that a DSL signal may be on the same line as the fax. Which of the following tools would MOST likely help prove this hypothesis?

- A. Multimeter
- B. Cable tester
- C. Lineman's handset
- D. Toner probe

Answer: C

NEW QUESTION 306

- (Exam Topic 3)

Which of the following network appliances can BEST be described as allowing multiple servers to share requests for a website through the same public IP address?

- A. VPN concentrator
- B. Content filter
- C. Load balancer
- D. Proxy server

Answer: C

NEW QUESTION 307

- (Exam Topic 3)

A user has network connectivity per the link lights on the NIC, but cannot access any network resources or the Internet. Which of the following commands should the technician run FIRST?

- A. arp
- B. ipconfig
- C. tracert
- D. route

Answer: B

NEW QUESTION 310

- (Exam Topic 3)

Users have reported issues accessing an Internet website. The network technician wants to verify network layer connectivity. Which of the following tools can provide the verification?

- A. ping
- B. netstat
- C. route
- D. arp

Answer: A

NEW QUESTION 315

- (Exam Topic 3)

Which of the following tools would Lisa, an administrator, use to determine if there is a problem with a telephone line?

- A. Port scanner
- B. Punch down tool
- C. Butt set
- D. Toner probe

Answer: C

NEW QUESTION 319

- (Exam Topic 3)

Which of the following is a specialized piece of hardware designed to encrypt and decrypt user traffic?

- A. Proxy server
- B. TDR
- C. Smart jack
- D. VPN concentrator

Answer: D

NEW QUESTION 321

- (Exam Topic 3)

Which of the following describes a rationale for a network with redundant paths?

- A. VPN compatibility
- B. Unified communications implementation
- C. High availability requirement
- D. QoS

Answer: C

NEW QUESTION 325

- (Exam Topic 3)

A public website using round robin DNS is an example of:

- A. load balancing.
- B. QoS.
- C. caching engines.
- D. traffic shaping.

Answer: A

NEW QUESTION 330

- (Exam Topic 3)

Which of the following could Karen, a network technician, use to find the approximate location of a break in a long network cable?

- A. Protocol analyzer
- B. Time domain reflectometer
- C. Toner probe
- D. Multimeter

Answer: B

NEW QUESTION 334

- (Exam Topic 3)

Karen, an administrator, wants to verify which protocols are in use on the network. Which of the following tools should she use?

- A. Intrusion detection software
- B. PoE
- C. Packet sniffer
- D. Intrusion prevention software

Answer: C

NEW QUESTION 337

- (Exam Topic 3)

A large company has experienced Internet slowdowns as users have increased their use of the Internet. Which of the following can the Network Administrator use to determine the amount of bandwidth used by type of application?

- A. Network maps
- B. Traffic analysis
- C. Syslog
- D. ICMP

Answer: B

NEW QUESTION 338

- (Exam Topic 3)

A proxy server would MOST likely be installed to provide which of the following functions? (Select TWO).

- A. Combined DNS and DHCP hosting
- B. Encryption
- C. Content filtering
- D. Fault tolerance
- E. Website caching

Answer: CE

NEW QUESTION 342

- (Exam Topic 3)

Which of the following tools would a technician use to terminate CAT6 wires to the inside of the wall jack?

- A. Toner probe
- B. Cable tester
- C. Punch down
- D. Crimper

Answer: C

NEW QUESTION 343

- (Exam Topic 3)

Which of the following is a method to prioritize network traffic coming from VoIP phones?

- A. PAT
- B. DNS
- C. SIP
- D. QoS

Answer: D

NEW QUESTION 346

- (Exam Topic 3)

Users are reporting wired connectivity drops in a new office with brand new CAT6 infrastructure. Which of the following tools should a technician use to BEST troubleshoot this issue?

- A. OTDR
- B. Protocol analyzer
- C. Toner probe
- D. Cable certifier

Answer: D

NEW QUESTION 348

- (Exam Topic 3)

An administrator edits the network firewall configuration. After editing the configuration, the administrator logs the date and time of the edit and why it was performed in the firewall documentation. Which of the following BEST describes these actions?

- A. Asset management
- B. Baselines
- C. Network maps
- D. Change management

Answer: D

NEW QUESTION 353

- (Exam Topic 3)

Which of the following hardware tools would MOST likely be used to verify Layer 1 connectivity?

- A. Multimeter
- B. Loopback plug
- C. Cable certifier
- D. CAT3 coupler

Answer: B

NEW QUESTION 357

- (Exam Topic 3)

Which of the following regulates the amount of network traffic a single node receives in a server cluster?

- A. Load balancer
- B. Proxy server
- C. Content filter
- D. Quality of service

Answer: A

NEW QUESTION 360

- (Exam Topic 3)

A technician testing an Ethernet card uses a cable wired with pins 1,2 to pins 3,6 on the same RJ-45 plug. Which of the following describes what the technician is using?

- A. RS-232
- B. Rollover cable
- C. Loopback
- D. Point to point cable

Answer: C

NEW QUESTION 365

- (Exam Topic 3)

Kim, a network technician, needs to identify the MAC address of a device that is creating broadcast storms on the network. Which of the following tools will provide the needed information?

- A. History logs
- B. Network sniffer
- C. Network maps
- D. Traffic shaping

Answer: B

NEW QUESTION 366

- (Exam Topic 3)

Lisa, an administrator, is experiencing availability issues on a Linux server. She decides to check the server for an IP address conflict on the server. Which of the following commands should Lisa use?

- A. traceroute
- B. tracet
- C. ifconfig

D. ipconfig

Answer: C

NEW QUESTION 368

- (Exam Topic 3)

Users have reported choppy audio in phone conversations since the implementation of SIP phones on the network. Which of the following should be implemented to alleviate the delays?

- A. Caching
- B. VoIP
- C. QoS
- D. SMTP

Answer: C

NEW QUESTION 372

- (Exam Topic 3)

Which of the following would Sandy, a technician, find in a network map?

- A. QoS standards
- B. MDF/IDFs
- C. System logs
- D. Firewall rules

Answer: B

NEW QUESTION 373

- (Exam Topic 3)

Which of the following defines access for a network?

- A. ACL
- B. RDP
- C. RAS
- D. ARP

Answer: A

NEW QUESTION 376

- (Exam Topic 3)

A user's computer is unable to access the Internet. Which of the following utilities can a technician use to determine if DNS is working?

- A. nbstat
- B. arp
- C. nslookup
- D. ipconfig

Answer: C

NEW QUESTION 381

- (Exam Topic 3)

Which of the following devices can be utilized to monitor and block websites accessible by a company?

- A. WINS server
- B. DNS server
- C. Content filter
- D. Reverse proxy

Answer: C

NEW QUESTION 383

- (Exam Topic 3)

Which of the following tools would BEST be used to verify if a network cable is properly terminated?

- A. Multimeter
- B. Cable certifier
- C. Toner probe
- D. Cable stripper

Answer: B

NEW QUESTION 385

- (Exam Topic 3)

A company has a server with redundant power supplies. Which of the following is this an example of?

- A. Traffic shaping
- B. Caching engines
- C. Fault tolerance
- D. Load balancing

Answer: C

NEW QUESTION 387

- (Exam Topic 3)

Which of the following security devices can receive and process HTTP requests from hosts to allow or deny traffic for web browsing purposes only?

- A. Load balancer
- B. VPN concentrator
- C. Proxy server
- D. DNS server

Answer: C

NEW QUESTION 388

- (Exam Topic 3)

Which of the following network appliances will only detect and not prevent malicious network activity?

- A. IDS
- B. Network sniffer
- C. IPS
- D. Firewall

Answer: A

NEW QUESTION 392

- (Exam Topic 3)

Which of the following reasons would MOST likely be used to implement QoS and traffic shaping solutions?

- A. Redundancy
- B. Fault tolerance
- C. Unified communications
- D. Data integrity requirements

Answer: C

NEW QUESTION 397

- (Exam Topic 3)

Which of the following network monitoring resources would be used to analyze possible connectivity issues such as duplex mismatches and uptime statistics?

- A. Protocol analyzer
- B. Syslog server
- C. Packet sniffer
- D. IPS logs

Answer: B

NEW QUESTION 400

- (Exam Topic 3)

A technician is unable to easily trace physical connections within a network rack. Which of the following practices would save time in the future?

- A. Change management
- B. Cable management
- C. Asset management
- D. Setting baselines

Answer: B

NEW QUESTION 402

- (Exam Topic 3)

It has been suspected that one of the users is using the network inappropriately. As a preventive measure HR has authorized the IT department to enable port mirroring on the user's network port. Which of the following devices would be used to monitor the network activity?

- A. Port analyzer
- B. Multimeter
- C. Network sniffer
- D. Cable certifier

Answer: C

NEW QUESTION 404

- (Exam Topic 3)

Which of the following network devices hides network nodes behind one public IP address?

- A. Layer 3 switch
- B. Content filter
- C. VPN server
- D. Proxy server

Answer: D

NEW QUESTION 405

- (Exam Topic 3)

Kim and Zach, attackers, use which of the following network scanners to see the protocols that are being used? (Select TWO).

- A. IDS
- B. Packet sniffer
- C. Port scanners
- D. Malware scanner
- E. Ping sweep

Answer: BC

NEW QUESTION 409

- (Exam Topic 3)

Jeff, a network technician, arrives to work and discovers users are having a problem connecting the company server. The server operator was working on upgrades the night before. Which of the following documents should Jeff use to attempt to discover the problem?

- A. Network maps
- B. Change management
- C. Baselines
- D. Cable management

Answer: B

NEW QUESTION 414

- (Exam Topic 3)

A network administrator wants to balance the amount of data between two networking cards. Which of the following can be used for two or more networking cards?

- A. NIC bonding
- B. Proxy server
- C. Firewall ACLs
- D. VLANs

Answer: A

NEW QUESTION 418

- (Exam Topic 3)

Which of the following commands will provide an administrator with the number of hops a packet takes from host to host?

- A. nslookup
- B. ping
- C. traceroute
- D. route

Answer: C

NEW QUESTION 419

- (Exam Topic 3)

Zach, a new network technician, is monitoring network traffic and notices the network is operating at 80% of capacity. Which of the following could be used to determine if this is abnormally high traffic use?

- A. Network maps
- B. Cable management documentation
- C. Wire schemes
- D. Baseline

Answer: D

NEW QUESTION 423

- (Exam Topic 3)

A user reports intermittent network connectivity. Which of the following should a technician configure on the managed switch to help troubleshoot this issue?

- A. SMTP
- B. SNTP
- C. SNMP
- D. SNAT

Answer: C

NEW QUESTION 425

- (Exam Topic 3)

DNS lookups for a given host are intermittently failing. Which of the following would Kim, a technician, MOST likely use to verify this problem?

- A. arp
- B. nbtstat
- C. traceroute
- D. dig

Answer: D

NEW QUESTION 429

- (Exam Topic 3)

Sandy, a user, is unable to map a drive to a known NetBIOS share. A ping from the client to the server is successful. Which of the following software tools is used to check if NetBIOS is enabled?

- A. netstat
- B. arp
- C. nbtstat
- D. nslookup

Answer: C

NEW QUESTION 434

- (Exam Topic 3)

An administrator is attempting to troubleshoot a program that is unable to resolve IP addresses from FQDNs. Which of the following commands is used to check reverse DNS settings?

- A. dig
- B. ifconfig
- C. nbtstat
- D. route

Answer: A

NEW QUESTION 438

- (Exam Topic 4)

Which of the following is used by RADIUS to encrypt messages between the server and the client?

- A. Public key
- B. CSU/DSU
- C. Private key
- D. Shared secret

Answer: D

NEW QUESTION 440

- (Exam Topic 4)

A company wants to only allow incoming HTTP and HTTPS traffic on their public wireless network. Which of the following port numbers should be the only allowed open ports on the firewall to accomplish this? (Select TWO).

- A. 20
- B. 80
- C. 143
- D. 443
- E. 8080

Answer: BD

NEW QUESTION 442

- (Exam Topic 4)

The company requires all users to authenticate to the network with a smart card, a pin number, and a fingerprint scan. Which of the following BEST describes the user authentication being used?

- A. Multi-factor authentication
- B. Two-factor authentication
- C. Biometrics
- D. Single sign-on

Answer: A

NEW QUESTION 444

- (Exam Topic 4)

A network administrator is considering implementation of network access restrictions based upon layer two addressing information. Which of the following describes this method of network restrictions?

- A. MAC filtering
- B. Port filtering
- C. IP filtering
- D. ACL filtering

Answer: A

NEW QUESTION 448

- (Exam Topic 4)

A network administrator wishes to limit the number of potential wireless clients to 20 on a specific AP. Which of the following settings needs to be changed?

- A. The network address translation IP range.
- B. The signal strength of the router.
- C. The DHCP lease time.
- D. The number of allowable MAC addresses.

Answer: D

NEW QUESTION 452

- (Exam Topic 4)

Which of the following attacks creates a buffer overflow to stop access to a system?

- A. Blue jacking
- B. DoS
- C. Netstat
- D. Man-in-the-middle

Answer: B

NEW QUESTION 456

- (Exam Topic 4)

A system administrator is implementing an IDS on the database server to see who is trying to access the server. The administrator relies on the software provider for what to detect. Which of the following would MOST likely be installed?

- A. Behavior based IDS
- B. Network based IDS
- C. Signature based IDS
- D. Honeypot

Answer: C

NEW QUESTION 457

- (Exam Topic 4)

A technician needs to restrict access to a SOHO wireless network to specific devices. Which of the following would MOST likely be used with minimal client configuration?

- A. Port filtering
- B. WEP
- C. MAC address filtering
- D. PoE

Answer: C

NEW QUESTION 459

- (Exam Topic 4)

Which of the following describes blocking traffic based upon the Layer 3 sources address of the traffic?

- A. Port filtering
- B. IP filtering
- C. MAC filtering
- D. Application filtering

Answer: B

NEW QUESTION 461

- (Exam Topic 4)

A network administrator decides to secure their small network by allowing only specific MAC addresses to gain access to the network from specific switches. Which of the following is described by this example?

- A. Packet filtering
- B. Hardware firewalls
- C. Port security
- D. Stateful inspection

Answer: C

NEW QUESTION 463

- (Exam Topic 4)

Lisa, a technician, is asked to not allow FTP traffic on a network. Which of the following ports should be blocked on the firewall to achieve this?

- A. 21
- B. 22
- C. 23
- D. 25

Answer: A

NEW QUESTION 464

- (Exam Topic 4)

Before installing a wireless network, which of the following should Karen, a network technician, take into consideration to reduce signal exposure for war drivers?

- A. Device placement
- B. MAC address filtering
- C. User authentication
- D. Encryption protocols

Answer: A

NEW QUESTION 466

- (Exam Topic 4)

Which of the following can be used to compromise a WPA encrypted wireless network when the rainbow table does not contain the key?

- A. Evil twin
- B. War chalking
- C. Buffer overflow
- D. Virus

Answer: A

NEW QUESTION 471

- (Exam Topic 4)

The security measure used to reduce vulnerabilities for MOST network devices that require regular application and monitoring is:

- A. Patch management.
- B. Security limitations.
- C. Documentation.
- D. Social engineering.

Answer: A

NEW QUESTION 474

- (Exam Topic 4)

Which of the following describes a single computer that is setup specifically to lure hackers into revealing their methods, and preventing real attacks on the production network?

- A. Evil twin
- B. Honeypot
- C. DMZ
- D. Honeynet

Answer: B

NEW QUESTION 478

- (Exam Topic 4)

Which of the following protocols works at the LOWEST layer of the OSI model?

- A. L2TP
- B. PPTP
- C. ISAKMP
- D. IPSec

Answer: A

NEW QUESTION 479

- (Exam Topic 4)

Karen, an employee, connects to a work computer from home via the built-in Windows remote desktop connection. Which of the following is she MOST likely using to establish the connection?

- A. RDP

- B. RTP
- C. RIP
- D. RAS

Answer: A

NEW QUESTION 482

- (Exam Topic 4)

Which of the following can be configured to restrict specific ports and IP addresses from accessing the internal network? (Select TWO).

- A. Layer 2 switch
- B. MAC address filtering
- C. ACLs
- D. IIS server
- E. Port scanner
- F. Firewall

Answer: CF

NEW QUESTION 486

- (Exam Topic 4)

A network technician has recently discovered rogue devices on their network and wishes to implement a security feature that will prevent this from occurring.

Which of the following will prevent unauthorized devices from connecting to a network switch?

- A. Implement 802.11i on all switches in the network.
- B. Implement port security on all computers in the company.
- C. Implement port security on all switches in the network.
- D. Implement rules on the firewall to block unknown devices.

Answer: C

NEW QUESTION 490

- (Exam Topic 4)

A corporate office recently had a security audit and the IT manager has decided to implement very strict security standards. The following requirements are now in place for each employee logging into the network:

Biometric fingerprint scan
Complex 12 character password
5 digit pin code authorization

Randomized security question prompt upon login

Which of the following security setups does this company employ?

- A. Single factor authentication
- B. Three factor authentication
- C. Two factor authentication
- D. Single sign-on

Answer: C

NEW QUESTION 495

- (Exam Topic 4)

An organization recently installed a firewall on the network. Employees must be able to send and receive email from a POP3 server. In which of the following ways should the firewall be configured? (Select TWO).

- A. Allow TCP port 23
- B. Allow TCP port 25
- C. Allow TCP port 110
- D. Allow UDP port 25
- E. Allow UDP port 110

Answer: BC

NEW QUESTION 496

- (Exam Topic 4)

A strong network firewall would likely support which of the following security features for controlling access? (Select TWO).

- A. War driving
- B. War chalking
- C. MAC filtering
- D. FTP bouncing
- E. Port filtering

Answer: CE

NEW QUESTION 498

- (Exam Topic 4)

Sandy, an administrator, determines there are an excessive number of packets being sent to a web server repeatedly by a small number of external IP addresses. This is an example of which of the following attacks?

- A. DDoS

- B. Viruses
- C. Worms
- D. Man-in-the-middle

Answer: A

NEW QUESTION 502

- (Exam Topic 4)

Honeypots and honeynets are different in which of the following ways?

- A. Honeynets are managed collections of honeypots.
- B. Honeypots only test software security, not hardware.
- C. Honeynets require specialized hardware to implement.
- D. Honeypots are usually servers and honeynets are routers and switches.

Answer: A

NEW QUESTION 503

- (Exam Topic 4)

A network administrator wants to add the firewall rule to allow SSH traffic to the FTP server with the assigned IP 192.168.0.15 from the Internet. Which of the following is the correct firewall rule?

- A. Allow ANY to 192.168.0.15 port 21
- B. Allow ANY to 192.168.0.15 port 22
- C. Allow ANY to 192.168.0.15 port 80
- D. Allow ANY to ANY port ANY

Answer: B

NEW QUESTION 504

- (Exam Topic 4)

Which of the following attacks would allow an intruder to do port mapping on a company's internal server from a separate company server on the Internet?

- A. SYN flood
- B. Teardrop
- C. Smurf
- D. FTP bounce

Answer: D

NEW QUESTION 507

- (Exam Topic 4)

Which of the following allows a malicious attacker to view network traffic if the attacker is on the same network segment as Joe, an administrator?

- A. DoS attack
- B. Man-in-the-middle attack
- C. Smurf attack
- D. Xmas attack

Answer: B

NEW QUESTION 512

- (Exam Topic 4)

Which of the following authentication solutions use tickets that include valid credentials to access additional network resources?

- A. Kerberos
- B. RADIUS
- C. Multi-factor authentication
- D. TACACS+

Answer: A

NEW QUESTION 514

- (Exam Topic 4)

A network administrator is setting up a WAP and wants to disable the ability of gaining access from the parking garage. Which of the following should the network administrator review?

- A. Signal strength
- B. SSID name
- C. WPA2 encryption
- D. WEP encryption

Answer: A

NEW QUESTION 517

- (Exam Topic 4)

Which of the following technologies allows multiple staff members to connect back to a centralized office?

- A. Peer to Peer
- B. VPN
- C. PKI
- D. VLAN

Answer: B

NEW QUESTION 522

- (Exam Topic 4)

Which of the following BEST describes a firewall that can be installed via Add/Remove programs on a Windows computer?

- A. Managed
- B. Software
- C. Hardware
- D. Wireless

Answer: B

NEW QUESTION 527

- (Exam Topic 4)

Which of the following authentication solutions also provides AAA and uses TCP?

- A. TACACS+
- B. Kerberos
- C. RADIUS
- D. RAS

Answer: A

NEW QUESTION 530

- (Exam Topic 4)

An administrator would like to search for network vulnerabilities on servers, routers, and embedded appliances. Which of the following tools would MOST likely accomplish this?

- A. Baseline analyzer
- B. Ping
- C. Protocol analyzer
- D. Nessus

Answer: D

NEW QUESTION 535

- (Exam Topic 4)

Which of the following network access methods is the MOST secure?

- A. PPPoE
- B. SIP
- C. RSH
- D. IPSec

Answer: D

NEW QUESTION 539

- (Exam Topic 4)

A technician needs to enter a username and password and have their fingerprint scanned to access a server. Which of following types of authentication is this an example of?

- A. Single sign-on
- B. Network access control
- C. PKI authentication
- D. Two-factor authentication

Answer: D

NEW QUESTION 541

- (Exam Topic 4)

A network technician is setting up a wireless access point that would only allow a certain laptop to be able to access the WAP. By using ACL, which of the following would be filtered to ensure only the authorized laptop can access the WAP?

- A. NetBIOS name filtering
- B. IP address filtering
- C. MAC address filtering
- D. Computer name filtering

Answer: C

NEW QUESTION 544

- (Exam Topic 4)

Which of the following authentication methods is MOST secure?

- A. NTLM
- B. CHAP
- C. MS-CHAP
- D. Kerberos

Answer: D

NEW QUESTION 547

- (Exam Topic 4)

Which of the following network access security methods ensures communication occurs over a secured, encrypted channel, even if the data uses the Internet?

- A. MAC filtering
- B. RAS
- C. SSL VPN
- D. L2TP

Answer: C

NEW QUESTION 552

- (Exam Topic 4)

Which of the following is a social engineering attack?

- A. Worms
- B. Man-in-the-middle
- C. Phishing
- D. Evil twin

Answer: C

NEW QUESTION 556

- (Exam Topic 4)

Lisa, an administrator, believes that the network has been attacked and MAC addresses have been captured allowing unauthorized computers to access the network. Which of the following tools did the attackers MOST likely use to accomplish this?

- A. Intrusion prevention software
- B. Packet sniffer
- C. Intrusion detection software
- D. Port scanner

Answer: B

NEW QUESTION 558

- (Exam Topic 4)

An administrator would like to inspect all traffic flowing over the SMTP protocol on a given network. Which of the following tools would accomplish this? (Select TWO).

- A. Packet sniffer
- B. Honeypot
- C. Port mirroring
- D. IPS
- E. Port scanner
- F. IDS

Answer: AC

NEW QUESTION 563

- (Exam Topic 4)

Which of the following is an example of two-factor authentication?

- A. A username and PIN
- B. A username and password
- C. A username, password, finger print scan, and smart card
- D. A username, password, and key fob number

Answer: D

NEW QUESTION 567

- (Exam Topic 5)

Zach, a technician, discovers a switch is not communicating with the other switches in a stack. Which of the following is the MOST likely cause?

- A. Both T568A and T568B standards are being used.
- B. STP is disabled.
- C. The cable is not a crossover.
- D. The port is not trunked.

Answer: C

NEW QUESTION 569

- (Exam Topic 5)

An administrator is troubleshooting analog telephony issues on the punch down block. Which of the following tools would be MOST useful in this scenario?

- A. T1 loopback
- B. Butt set
- C. Multimeter
- D. Protocol analyzer

Answer: B

NEW QUESTION 573

- (Exam Topic 5)

Using source port numbers as a way to keep track of connections is a characteristic of which of the following protocols?

- A. TCP
- B. UDP
- C. NAT
- D. PAT

Answer: D

NEW QUESTION 576

- (Exam Topic 5)

Various desktop computers are not getting a link light even though the patch cables were replaced. Cables on a 110-block patch panel are suspected to be causing the issues. Which of the following hardware tools would MOST likely be used to troubleshoot and resolve the issue? (Select TWO).

- A. Cable certifier
- B. Ping command
- C. Punch down tool
- D. Crimper
- E. Toner probe

Answer: AC

NEW QUESTION 578

- (Exam Topic 5)

Which of the following is the unit used to transfer information at Layer 2 of the OSI model?

- A. Packet
- B. Socket
- C. Session
- D. Frame

Answer: D

NEW QUESTION 581

- (Exam Topic 5)

You have been tasked with testing a CAT5 cable. A summary of the test results can be found on the screen. Step 1: Select the tool that was used to create the cable test results.

Step 2: Interpret the best results and select the options that explains the results.

Cable Test

Step 1: Select the tool that was used to create the cable test results.

Cable Test Result

1.	2	Open	7ft
3.	6	Short	7ft
4.	5	Open	7ft
7.	8	Open	7ft

Tool Choices

- Multimeter
- Toner Probe
- Protocol Analyzer
- OTDR
- Cable Certifier
- Crimper
- Punch Down Tool

Step 2: Interpret the test results and select the option that explains the results.
 After you are done with your analysis, click the 'Submit Cable Test Analysis' button.

☐ Correctly crimped cable
☐ Incorrectly crimped cable

- A. Mastered
 B. Not Mastered

Answer: A

Explanation:

Cable certifier – incorrectly crimped cable.

NEW QUESTION 585

- (Exam Topic 5)

Which of the following diagnostic commands relies on proper forwarding of ICMP ECHO packets?

- A. ifconfig
 B. ping
 C. route
 D. nbtstat

Answer: B

NEW QUESTION 589

- (Exam Topic 5)

Which of the following wiring distribution types, often found in company closets, is used to connect wiring from individual offices to the main LAN cabling?

- A. MDF
 B. 66 block
 C. IDF
 D. Patch panel

Answer: D

NEW QUESTION 590

- (Exam Topic 5)

A technician is looking to create a new network cable. Which of the following tools would assist in creating and testing a cable properly? (Select TWO).

- A. Toner probe
 B. Cable certifier
 C. Butt set
 D. Crimper
 E. Network analyzer

Answer: BD

NEW QUESTION 591

- (Exam Topic 5)

Several mobile users from various areas are reporting intermittent connectivity issues. Which of the following is the MOST likely cause?

- A. Encryption strength
- B. SSID mismatch
- C. Interference
- D. Incompatible NIC

Answer: C

NEW QUESTION 593

- (Exam Topic 5)

A MAC address is a part of which of the following OSI model layers?

- A. Network
- B. Data Link
- C. Physical
- D. Transport

Answer: B

NEW QUESTION 595

- (Exam Topic 5)

Which of the following commands will display the associated IP address of a network adapter in Windows and Linux environments? (Select TWO).

- A. dig
- B. nslookup
- C. nbstat
- D. ifconfig
- E. ipconfig

Answer: DE

NEW QUESTION 598

- (Exam Topic 5)

A network administrator suspects an employee of using the company's Internet connection to download illegal content. Which of the following can be used to inspect ongoing network traffic?

- A. Syslog server
- B. Toner probe
- C. OTDR
- D. Packet sniffer

Answer: D

NEW QUESTION 601

- (Exam Topic 5)

A network technician wants to baseline traffic flows on a specific network. Which of the following will provide the GREATEST level of detail?

- A. Network flow information
- B. SNMP traps
- C. Debug level syslog
- D. Protocol analyzer

Answer: D

NEW QUESTION 602

- (Exam Topic 5)

The Transport Layer of the TCP/IP model corresponds to which of the following layers of the OSI model?

- A. 1
- B. 3
- C. 4
- D. 5

Answer: C

NEW QUESTION 607

- (Exam Topic 5)

Spanning-Tree Protocol is used with which of the following network devices?

- A. Router
- B. NIC
- C. Switch
- D. DHCP server

Answer: C

NEW QUESTION 608

- (Exam Topic 5)

Which of the following ports is used by Telnet?

- A. 21
- B. 23
- C. 80
- D. 143

Answer: B

NEW QUESTION 610

- (Exam Topic 5)

The network administrator just upgraded all of the WAPs to new ones with 2.4 GHz b/g/n support. The new WAPs reuse the same location and channel as the previous one and with no new external interference detected. However, performance issues are now occurring that did not exist before. Which of the following would correct the issue?

- A. Configure Wi-Fi Multimedia support
- B. Use only 20 MHz channel bandwidth
- C. Enable band steering to use 802.11n
- D. Configure Quality of Service

Answer: B

NEW QUESTION 612

- (Exam Topic 5)

A home user wishes to secure the wireless network using strong encryption, so they decide to use AES. Which of the following would be used as the encryption method?

- A. WEP
- B. CCMP
- C. TKIP
- D. CHAP

Answer: B

NEW QUESTION 614

- (Exam Topic 5)

A technician would like to connect two separate LAN networks at a small business for a short period of time, to share files. The connection needs to be temporary, and is physically impossible using standard network cabling. Which of the following is the BEST way to connect the networks in this situation?

- A. Wireless repeater
- B. Wireless bridge
- C. Bluetooth
- D. RADIUS server

Answer: B

NEW QUESTION 616

- (Exam Topic 5)

Which of the following is the Telco end of a T1 demarc?

- A. Smart jack
- B. Network tap
- C. Proxy server
- D. IDF

Answer: A

NEW QUESTION 619

- (Exam Topic 5)

A company wants to simplify network authentication for their users. Which of the following would be used to implement wireless security with single sign-on?

- A. WPA2 enterprise
- B. WEP
- C. Stateful firewall
- D. PAT

Answer: A

NEW QUESTION 623

- (Exam Topic 5)

A network administrator is adding 24 - 802.3af class 2 VoIP phones and needs to purchase a single PoE switch to power the phones. Which of the following is the MINIMUM PoE dedicated wattage the switch supports to power all of the phones at full power?

- A. 96W
- B. 168W
- C. 240W






D. 369.6W

Answer: B

NEW QUESTION 626

- (Exam Topic 5)

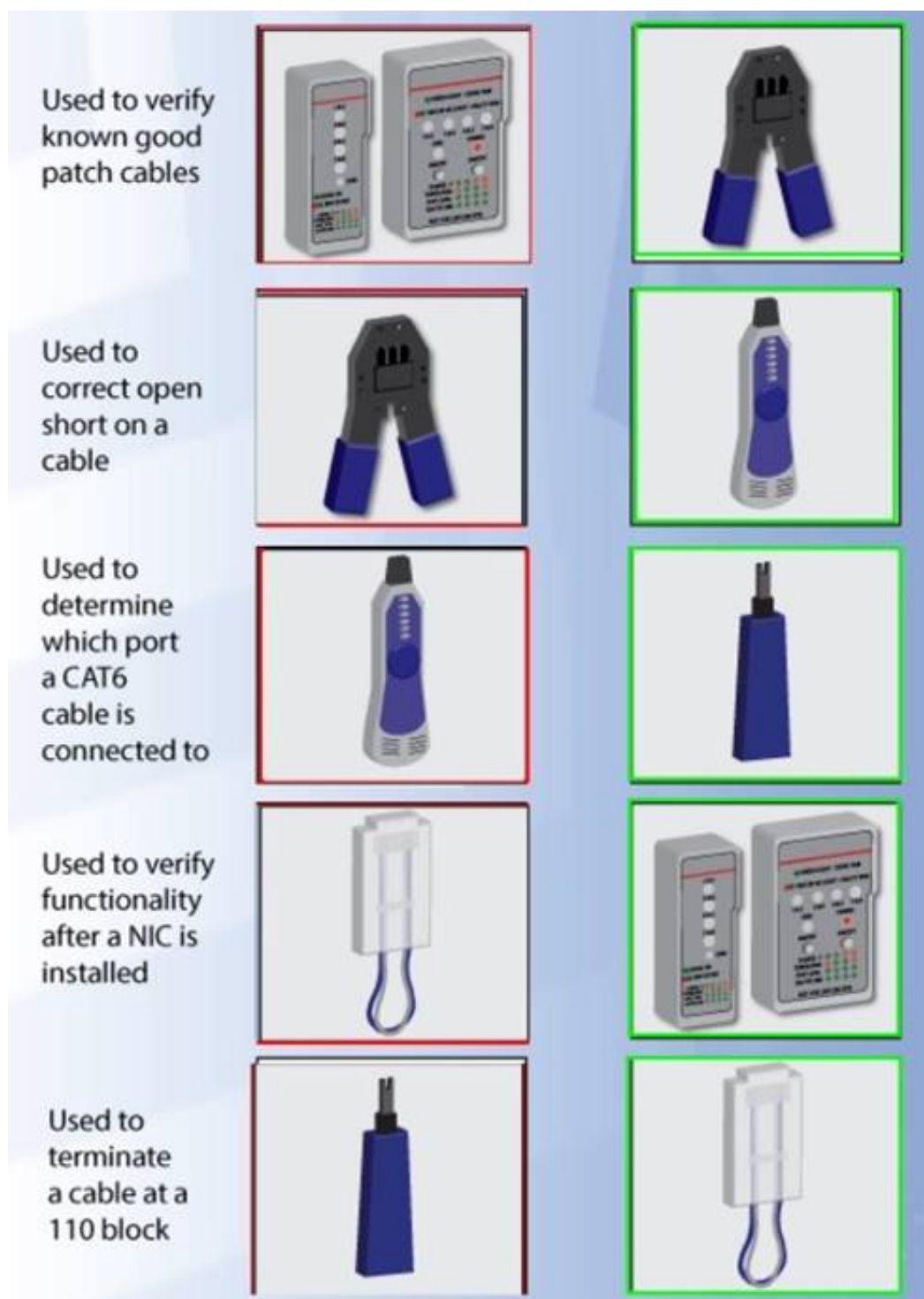
Drag and drop each networking tool to the MOST appropriate descriptor. Each tool may only be used once.

Used to verify known good patch cables		
Used to correct open short on a cable		
Used to determine which port a CAT6 cable is connected to		
Used to verify functionality after a NIC is installed		
Used to terminate a cable at a 110 block		

- A. Mastered
- B. Not Mastered

Answer: A

Explanation:



NEW QUESTION 629

- (Exam Topic 5)

Which of the following wireless standards has a MAXIMUM speed of only 1Mbps?

- A. IrDA
- B. 802.11b
- C. Bluetooth
- D. 802.11g

Answer: C

NEW QUESTION 634

- (Exam Topic 5)

A technician is terminating a new run of network cables to a 110 block. Which of the following tools would the technician use?

- A. Loopback plug
- B. Crimper tool
- C. Punch down tool
- D. Cable tester

Answer: C

NEW QUESTION 637

- (Exam Topic 5)

A user is unable to print to a network printer. Which of following is the FIRST step that a technician should take to troubleshoot the issue?

- A. Identify the problem.
- B. Establish a plan of action to resolve the problem.
- C. Establish a theory of probable cause.
- D. Implement preventative measures.

Answer: A

NEW QUESTION 642

- (Exam Topic 5)

A network administrator is implementing a wireless honeypot to detect wireless breach attempts. The honeypot must implement weak encryption to lure malicious users into easily breaking into the network. Which of the following should the network administrator implement on the WAP?

- A. WPA
- B. WPA2
- C. WEP
- D. VPN

Answer: C

NEW QUESTION 643

- (Exam Topic 5)

A company wants to ensure that a wireless signal from their WAP only sends down one specific corridor. Which of the following can be done to achieve this?

- A. Disable the SSID.
- B. Change the broadcast channel.
- C. Lower the signal strength.
- D. Change the antennas.

Answer: D

NEW QUESTION 645

- (Exam Topic 5)

Which of the following devices exist as either hardware or software to assist in routing traffic? (Select TWO).

- A. Cable modem
- B. Layer 2 switch
- C. Router
- D. NIDS
- E. Layer 3 switch

Answer: CE

NEW QUESTION 648

- (Exam Topic 5)

Several users are reporting connectivity issues with their laptops. Upon further investigation, the network technician identifies that their laptops have been attacked from a specific IP address outside of the network. Which of the following would need to be configured to prevent any further attacks from that IP address?

- A. Port security
- B. IDS
- C. Firewall rules
- D. Switch VLAN assignments

Answer: C

NEW QUESTION 653

- (Exam Topic 5)

A new SOHO wireless network is set up using two access points with separate SSIDs on the same frequency. However, the users are experiencing intermittent connectivity on both SSIDs. Which of the following is the problem?

- A. Wrong DNS
- B. SSID mismatch
- C. Encryption type
- D. Incorrect channel

Answer: D

NEW QUESTION 654

- (Exam Topic 5)

Kim, a user, cannot access the network using wireless. Which of the following is MOST likely the cause?

- A. TXRX is reversed
- B. Faulty crossover cable
- C. Incorrect WEP key
- D. A short in the cable pairs

Answer: C

NEW QUESTION 658

- (Exam Topic 5)

Which of the following can a technician use when a company implements redundant WAN links?

- A. Content filter
- B. Load balancer
- C. Proxy server
- D. VPN concentrator

Answer: B

NEW QUESTION 662

- (Exam Topic 5)

A DSL modem connects to the provider's network using which of the following authentication techniques?

- A. PoE
- B. MS-CHAP
- C. PPPoE
- D. EAP

Answer: C

NEW QUESTION 664

- (Exam Topic 5)

A supervisor requests that a technician downloads a MIB for a particular server. Which of the following protocols requires MIBs?

- A. IPSec
- B. SSL
- C. ISAKMP
- D. SNMP

Answer: D

NEW QUESTION 669

- (Exam Topic 5)

Which of the following wireless standards can transmit data up to 540Mbps?

- A. 802.11a
- B. 802.11b
- C. 802.11g
- D. 802.11n

Answer: D

NEW QUESTION 674

- (Exam Topic 5)

When configuring a WAP for a SOHO, which parameter will BEST limit access to the office area?

- A. Signal strength
- B. SSID enable
- C. Encryption
- D. Password hardening

Answer: A

NEW QUESTION 679

- (Exam Topic 5)

Companies trying to cut down on constant documentation of IP addresses could use which of the following?

- A. Longer lease times
- B. More reservations
- C. Larger scopes
- D. Dynamic IP addressing

Answer: D

NEW QUESTION 683

- (Exam Topic 5)

An organization wants to perform maintenance on any of its web servers without affecting the service availability during a scheduled change window. Which of the following network devices would be required to provide this functionality?

- A. Router
- B. Forward proxy
- C. Load balancer
- D. Firewall

Answer: C

NEW QUESTION 688

- (Exam Topic 5)

A network technician visits a site that needs voice connectivity to the corporate office and installs four IP phones. The phone exchange resides at the telephone company. Which of the following technologies is being used?

- A. Virtual switch

- B. Virtual server
- C. Virtual desktop
- D. Virtual PBX

Answer: D

NEW QUESTION 693

- (Exam Topic 5)

Which of the following protocols can be implemented to provide encryption during transmission between email gateways?

- A. TLS
- B. PPTP
- C. SSH
- D. HTTPS

Answer: A

NEW QUESTION 697

- (Exam Topic 5)

Users trying to access a website using HTTPS are being blocked by the firewall. Which of the following ports needs to be allowed?

- A. 80
- B. 143
- C. 443
- D. 3389

Answer: C

NEW QUESTION 699

- (Exam Topic 5)

Zach, a network technician, is unable to remotely manage or ping certain layer 2 switches. To manage those devices remotely, which of the following will MOST likely need to be configured?

- A. IP address on the native VLAN interface
- B. Port security
- C. Port forwarding
- D. IP address on the fiber interface

Answer: A

NEW QUESTION 700

- (Exam Topic 5)

Which of the following wiring components is used as a central point of termination for all network jacks through a building area?

- A. Demarc
- B. CSU
- C. Patch Panel
- D. Smart Jack

Answer: C

NEW QUESTION 701

- (Exam Topic 5)

A Windows server has a problem after booting up. Kim, a technician, should immediately check the:

- A. history logs.
- B. cron logs.
- C. application logs.
- D. system logs.

Answer: D

NEW QUESTION 702

- (Exam Topic 5)

Which of the following wireless standards has a MAXIMUM transfer rate of 11Mbps?

- A. 802.11a
- B. 802.11b
- C. 802.11g
- D. 802.11n

Answer: B

NEW QUESTION 705

- (Exam Topic 5)

Which of the following commands can be used on a server to display IP information for a given interface?

- A. nbtstat
- B. dig
- C. ifconfig
- D. msconfig

Answer: C

NEW QUESTION 708

- (Exam Topic 5)

Which of the following addresses is a class B private address?

- A. 132.216.14.184
- B. 152.119.25.213
- C. 162.17.43.22
- D. 172.23.226.34

Answer: D

NEW QUESTION 712

- (Exam Topic 5)

A technician has replaced the Internet gateway router, and now no users can reach the Internet. The technician can ping the router Ethernet port but not the ISP's router IP address. Which of the following is the MOST likely problem?

- A. Faulty crossover cable
- B. DNS server is down
- C. Switching loop
- D. Outside interface shutdown

Answer: D

NEW QUESTION 714

- (Exam Topic 5)

A user is unable to access any network resources. The IP configuration of the workstation is as follows:

IP Address: 192.168.10.32

Subnet Mask: 255.255.255.240

Default Gateway: 192.168.10.46

Which of the following would allow the user to connect to network resources?

- A. Change the default gateway to 192.168.10.1
- B. Change the default gateway to 192.168.10.254
- C. Change the IP address to 192.168.10.31
- D. Change the IP address to 192.168.10.33

Answer: D

NEW QUESTION 716

- (Exam Topic 5)

Which of the following connector types would be found with a VoIP system utilizing CAT6 cabling?

- A. SC
- B. RJ-45
- C. RJ-11
- D. BNC

Answer: B

NEW QUESTION 720

- (Exam Topic 5)

Which of the following DNS records must be queried to resolve the IPv6 address of a website?

- A. CNAME
- B. PTR
- C. AAAA
- D. A

Answer: C

NEW QUESTION 721

- (Exam Topic 5)

A technician needs to install a new wireless encryption system. They are evaluating the feasibility of implementing WPA. WPA increases protection over WEP by implementing which of the following?

- A. Strong RC4 encryption
- B. Shared secret keys
- C. AES encryption

D. Key rotation

Answer: D

NEW QUESTION 723

- (Exam Topic 5)

Which of the following network topologies is ONLY possible between two users?

- A. Star
- B. Client-server
- C. Hybrid
- D. Peer-to-peer

Answer: D

NEW QUESTION 726

- (Exam Topic 5)

A technician has been tasked to set-up a managed switch. Which of the following will the technician need to accomplish this task?

- A. IP address
- B. Switch serial number
- C. VLAN tag
- D. Loopback plug

Answer: A

NEW QUESTION 728

- (Exam Topic 5)

Which of the following media types can carry a standard Ethernet signal for network connectivity?

- A. USB
- B. Parallel
- C. Serial
- D. CAT6

Answer: D

NEW QUESTION 730

- (Exam Topic 5)

A technician is setting up a firewall on the network that would show a public IP address out to the Internet and assign private IP addresses to users inside the network. Which of the following processes should be set up?

- A. Port security
- B. MAC filtering
- C. ACL
- D. NAT

Answer: D

NEW QUESTION 731

- (Exam Topic 5)

A Chief Executive Officer (CEO) decided that only a limited number of authorized company workstations will be able to connect to the Internet. Which of the following would BEST accomplish this goal?

- A. Use content filtering
- B. Install and configure IDS
- C. Enable MAC address filtering
- D. Enable RAS on the network firewall

Answer: C

NEW QUESTION 734

- (Exam Topic 5)

Which of the following protocols is used to transmit outgoing email?

- A. RDP
- B. NTP
- C. POP3
- D. SMTP

Answer: D

NEW QUESTION 735

- (Exam Topic 5)

Which of the following cable types supports the FURTHEST distance when connecting various MDFs?

- A. Multimode
- B. UTP
- C. Singlemode
- D. CAT6

Answer: C

NEW QUESTION 738

- (Exam Topic 5)

Which of the following monitoring devices are used only to recognize suspicious traffic from specific software?

- A. Signature based IPS
- B. Application based IDS
- C. Anomaly based IDS
- D. Application based IPS

Answer: B

NEW QUESTION 742

- (Exam Topic 5)

Which of the following ports does IMAP use by default?

- A. 110
- B. 123
- C. 143
- D. 443

Answer: C

NEW QUESTION 747

- (Exam Topic 5)

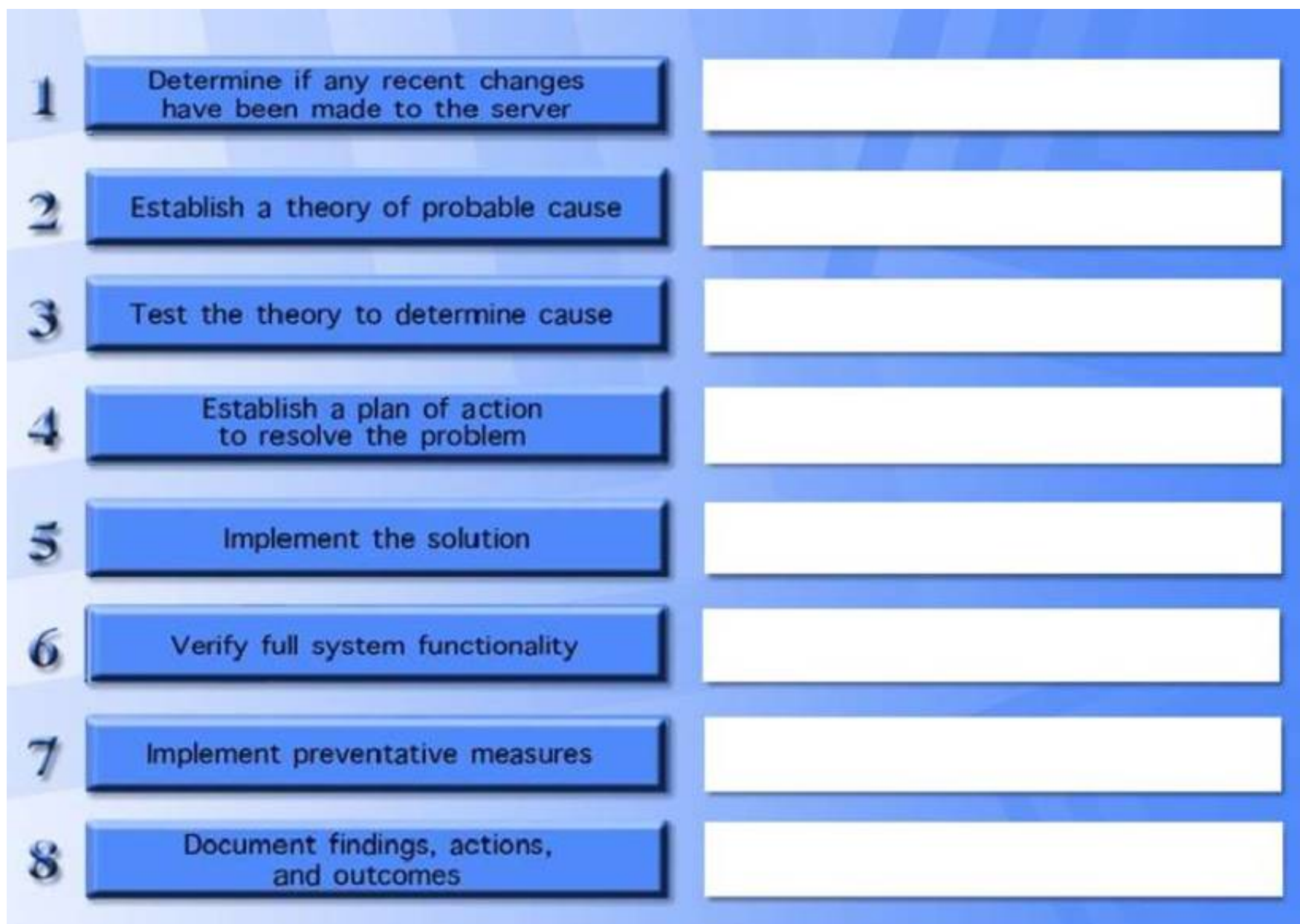
A customer's email server is not sending emails. Arrange the troubleshooting steps in the order the technician should perform them:

1	<input type="text"/>	Implement the solution
2	<input type="text"/>	Verify full system functionality
3	<input type="text"/>	Establish a theory of probable cause
4	<input type="text"/>	Determine if any recent changes have been made to the server
5	<input type="text"/>	Document findings, actions, and outcomes
6	<input type="text"/>	Establish a plan of action to resolve the problem
7	<input type="text"/>	Test the theory to determine cause
8	<input type="text"/>	Implement preventative measures

- A. Mastered
- B. Not Mastered

Answer: A

Explanation:



NEW QUESTION 748

- (Exam Topic 5)

Which of the following devices can be used to offload outbound web server SSL encryption overhead?

- A. NIPS
- B. Proxy server
- C. Content filter
- D. VPN concentrator

Answer: B

NEW QUESTION 753

- (Exam Topic 5)

Which of the following dynamic routing protocols selects routing paths based upon hop count?

- A. BGP
- B. RIP
- C. OSPF
- D. IGRP

Answer: B

NEW QUESTION 754

- (Exam Topic 5)

A technician tests a cable going to the patch panel and notices the following output from the cable tester: 1 1

2-----2
3-----3
4-----4
5-----5
6-----6
7-----7
8-- --8

On a T568A standard CAT5e cable, which of the following wire strands is the cause of this connectivity issue?

- A. White Orange
- B. Solid Brown
- C. Solid Orange
- D. White Green

Answer: D

NEW QUESTION 757

- (Exam Topic 5)

A technician, Joe, visits a site that has reported a network down emergency. He immediately reboots the switches and the router since the network is down. Which of the following network troubleshooting methodology steps should Joe have performed FIRST?

- A. Determine if anything has changed
- B. Once a theory is confirmed determine the next step is to resolve the problem
- C. Implement the solution or escalate as necessary
- D. Question the obvious

Answer: A

NEW QUESTION 762

- (Exam Topic 5)

Which of the following default ports would need to be open on a firewall to allow remote desktop access?

- A. 143
- B. 443
- C. 3389
- D. 8080

Answer: C

NEW QUESTION 767

- (Exam Topic 5)

A user wants to send information and ensure that it was not modified during transmission. Which of the following should be implemented?

- A. MAC filtering
- B. Digital signatures
- C. MS-CHAP
- D. CHAP

Answer: B

NEW QUESTION 770

- (Exam Topic 5)

A Linux-based workstation is unable to connect to an IP printer on the same network segment. The printer IP address settings have been verified. How would a network technician verify IP address settings on the Linux-based workstation?

- A. Run the dig command on the workstation.
- B. Run the nslookup command on the workstation.
- C. Run the ipconfig command on the workstation.
- D. Run the ifconfig command on the workstation.

Answer: D

NEW QUESTION 771

- (Exam Topic 5)

Which of the following cables would BEST be used to extend a network through an 80 feet (262 meters) machine shop that has many high voltage machines and generators running?

- A. CAT5
- B. CAT6
- C. Coaxial
- D. Fiber

Answer: D

NEW QUESTION 772

- (Exam Topic 5)

Which of the following DNS records allows for reverse lookup of a domain?

- A. PTR
- B. AAAA
- C. A
- D. MX

Answer: A

NEW QUESTION 775

- (Exam Topic 5)

A company recently added an addition to their office building. A technician runs new plenum network cables from the switch on one side of the company's gymnasium 80 meters (262 ft.) to the new offices on the other side, draping the wires across the light fixtures. Users working out of the new offices in the addition complain of intermittent network connectivity. Which of the following is MOST likely the cause of the connectivity issue?

- A. dB loss

- B. Distance
- C. Incorrect connector type
- D. EMI
- E. Crosstalk

Answer: D

NEW QUESTION 776

- (Exam Topic 5)

A technician enters a username and password once and can access multiple databases without being prompted to reenter their password. This is an example of which of the following?

- A. Two-factor authentication
- B. Network access control
- C. Multifactor authentication
- D. Single sign-on

Answer: D

NEW QUESTION 779

- (Exam Topic 5)

Which of the following characteristics allows an 802.11g WAP to have transfer speeds up to 108Mbps?

- A. MIMO technology
- B. Channel bonding
- C. Encryption type
- D. Frequency

Answer: B

NEW QUESTION 784

- (Exam Topic 5)

Which of the following methods limits access to a network based on characteristics of the network card?

- A. IP filtering
- B. MAC filtering
- C. Port filtering
- D. Encryption

Answer: B

NEW QUESTION 785

- (Exam Topic 5)

Which of the following protocols is used to allow multiple hosts to share a common IP address?

- A. HTTPS
- B. ARP
- C. CARP
- D. NAT

Answer: D

NEW QUESTION 788

- (Exam Topic 5)

Jeff, a technician, has been asked to add a subnet to the company's LAN. Which of the following interfaces on the router will be modified?

- A. FastEthernet 0/0
- B. AUX 0
- C. Console 0
- D. Serial 0/0/0

Answer: A

NEW QUESTION 792

- (Exam Topic 5)

A technician installs a wireless router on an existing network by connecting it directly to the firewall. By default, the main network is a Class A network, while the wireless network is a Class C network. After the wireless router is installed, users connected to the wireless network report they are unable to connect to the Internet. Which of the following needs to be configured to BEST resolve this issue?

- A. Configure the main network to Class C
- B. Allow for duplicate IP addresses
- C. Allow the main network to handle DHCP
- D. Create a spanning tree to prevent switching loops

Answer: C

NEW QUESTION 797

- (Exam Topic 5)

Which of the following antenna types has a flat circular radiation pattern?

- A. Diversity
- B. Yagi
- C. Omni
- D. Patch

Answer: C

NEW QUESTION 802

- (Exam Topic 5)

A recent flood in the office caused a lot of equipment to be damaged and the manager of the IT department would like a way to prevent such an incident in the future. Which of the following is the BEST way to mitigate such an equipment failure?

- A. Reduce the power input on the replacement servers.
- B. Cover the servers with plastic tarps.
- C. Purchase twice as many servers to create high availability clusters.
- D. Transfer the replacement servers offsite to a data center.

Answer: D

NEW QUESTION 804

- (Exam Topic 5)

Zach, a technician, is checking newly installed CAT5e cabling, and suspects that some of the ends were not properly terminated. Which of the following tools will verify this?

- A. Cable tester
- B. Toner probe
- C. OTDR
- D. Loopback plug

Answer: A

NEW QUESTION 808

- (Exam Topic 5)

A network technician performs several switch commands to enable various advanced features on the switch in the accounting department. During the configuration changes, several users from this department report connectivity issues. Which of the following logs would the network technician need to analyze to troubleshoot the connectivity issues?

- A. Router logs
- B. History logs
- C. Startup/bootup config logs
- D. Event Viewer logs

Answer: B

NEW QUESTION 812

- (Exam Topic 5)

Jeff, a technician, needs multiple networks, high speeds, and redundancy on a system. Which of the following configurations should Jeff consider for these requirements? (Select TWO).

- A. Routing table
- B. Next hop
- C. Port mirroring
- D. Port monitoring
- E. VLANs

Answer: CE

NEW QUESTION 816

- (Exam Topic 5)

A mobile user is no longer able to access network resources. Jeff, the network technician, is unable to ping the user's workstation. Which of the following commands would MOST likely be used on that workstation to verify its current network settings?

- A. net share
- B. hostname
- C. ipconfig
- D. tracert

Answer: C

NEW QUESTION 818

- (Exam Topic 5)

Which of the following LAN technologies is used to provide a MAXIMUM bandwidth of 1Gbps through single mode fiber?

- A. 10GBaseLR
- B. 100BaseFX
- C. 100BaseTX
- D. 1000BaseX

Answer: D

NEW QUESTION 820

- (Exam Topic 5)

Jeff, a technician, is charged with setting up network monitoring for critical devices in the network. It is important the information be sent securely to the monitoring station. Which of the following protocols will support secure transmission of the data?

- A. SNMP v2
- B. VPN
- C. SYSLOG
- D. SMTP

Answer: A

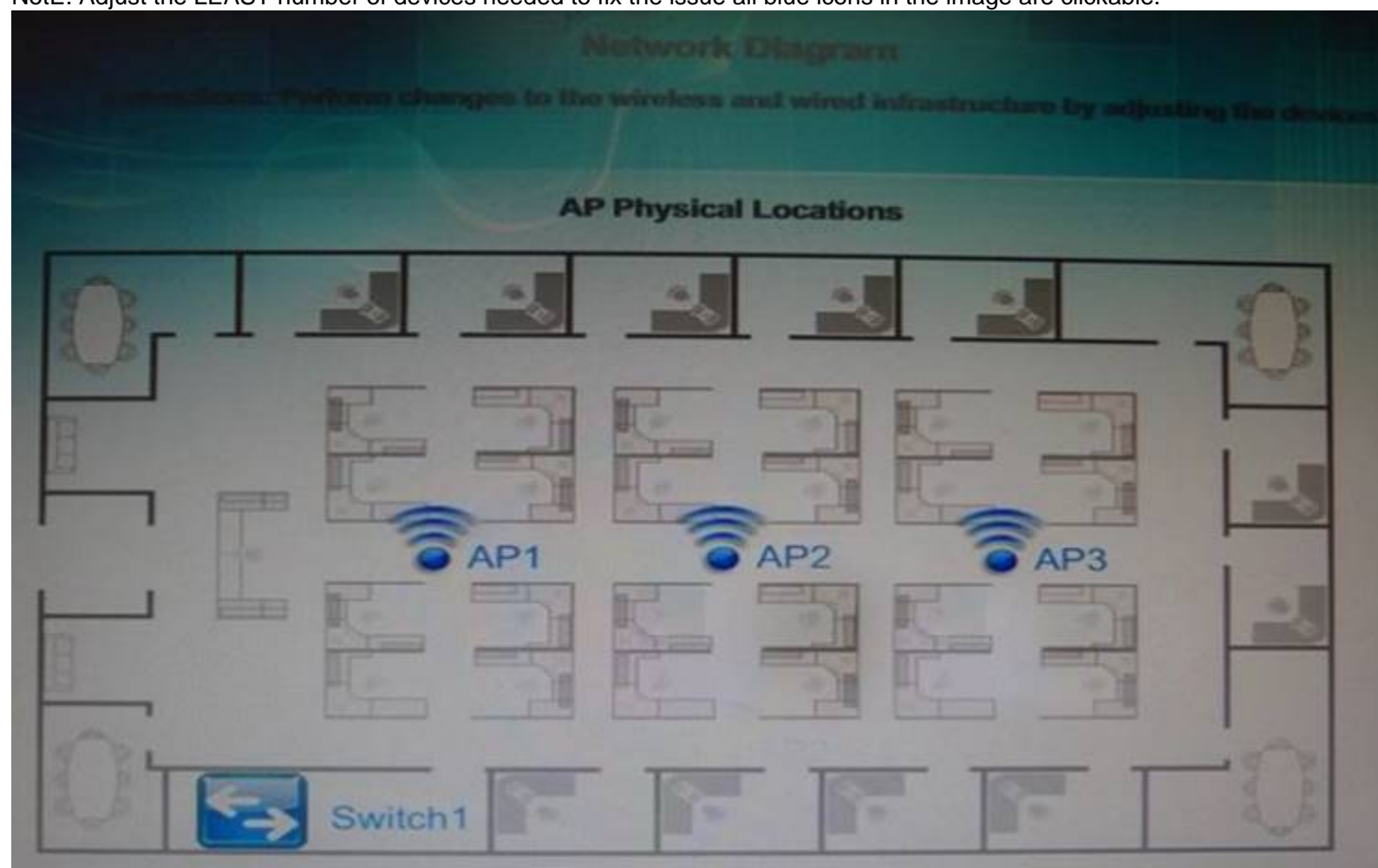
NEW QUESTION 821

- (Exam Topic 5)

Wireless network users recently began experiencing speed and performance issues after access point 2 (AP2) was replaced due to faulty hardware. The original network was installed according to a consultant's specifications and has always worked without a problem.

You a network technician, have been tasked with evaluating the situation and resolving the issues to improve both performance and connectivity. Refer to the following diagram and perform any Necessary changes to the wireless and wired infrastructure by adjusting devices.

NotE. Adjust the LEAST number of devices needed to fix the issue all blue icons in the image are clickable.



http://ap1.setup.do

Wireless AP Configuration Settings

Basic Configuration

Access Point Name: AP1

IP Address: 192.168.100.151 / 24

Gateway: 192.168.100.1

SSID: CorpNET

SSID Broadcast: ☒ Yes ☐ No

Wireless

Mode: G

Channel: 1

Wired

Speed: ☐ Auto ☒ 100 ☐ 1000

Duplex: ☐ Auto ☐ Half ☒ Full

Security

Security Settings: ☐ None ☐ WEP ☒ WPA

Key or Passphrase: 123456789b

Reset Submit

http://ap2.setup.do

Wireless AP Configuration Settings

Basic Configuration

Access Point Name: AP2

IP Address: 192.168.100.152 / 24

Gateway: 192.168.100.1

SSID: CorpNET

SSID Broadcast: ☒ Yes ☐ No

Wireless

Mode: B

Channel: 1

Wired

Speed: ☒ Auto ☐ 100 ☐ 1000

Duplex: ☒ Auto ☐ Half ☐ Full

Security

Security Settings: ☐ None ☐ WEP ☒ WPA

Key or Passphrase: 123456789b

Reset Submit

Wireless AP Configuration Settings

Basic Configuration

Access Point Name: AP3

IP Address: 192.168.100.153 / 24

Gateway: 192.168.100.1

SSID: CorpNET

SSID Broadcast: ☒ Yes ☐ No

Wireless

Mode: G

Channel: 11

Wired

Speed: ☐ Auto ☒ 100 ☐ 1000

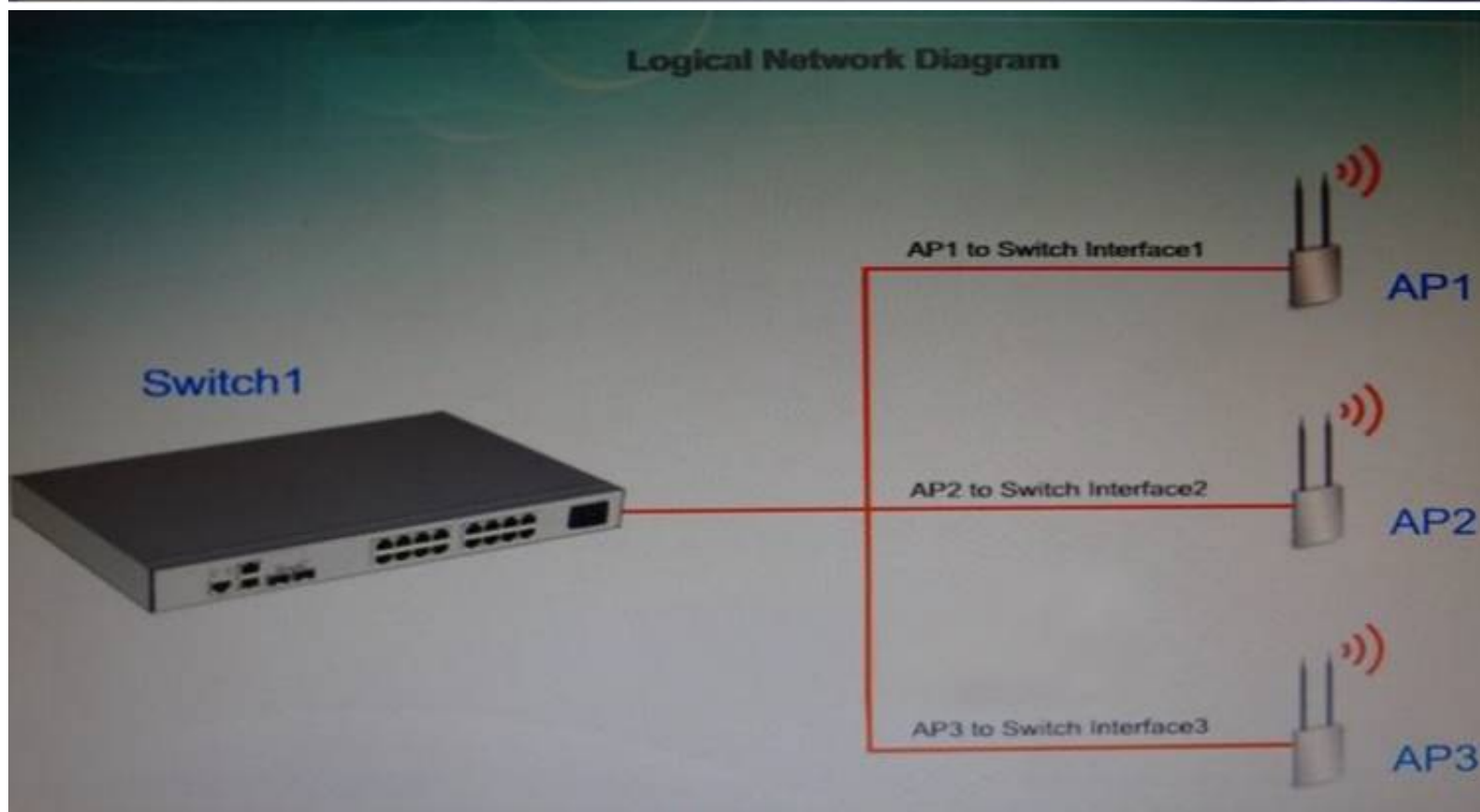
Duplex: ☐ Auto ☐ Half ☒ Full

Security

Security Settings: ☐ None ☐ WEP ☒ WPA

Key or Passphrase: 123456789b

Reset Submit



- A. Mastered
- B. Not Mastered

Answer: A

Explanation:

AP2 configuration is not correct. The wireless mode should be 'G' and channel should be '11'. For the wired interface, the speed should be set to 100 and duplex to 'Full'. Click 'Submit'.

NEW QUESTION 823

- (Exam Topic 5)

A technician has configured a router to authenticate VPN users to an LDAP server on the network. In order to allow the authentication service, both UDP and TCP ports needed to be allowed on the router. Which of the following services was MOST likely used?

- A. Kerberos
- B. TACACS+
- C. RADIUS
- D. 802.1x

Answer: C

NEW QUESTION 828

- (Exam Topic 5)

Which of the following WAN technologies uses an analog phone line to transmit data?

- A. LTE
- B. DSL
- C. Satellite
- D. Cable

Answer: B

NEW QUESTION 829

- (Exam Topic 5)

A national cable company providing TV, telephone, and Internet service to home users over its IP network, has been tracking a large increase of network bandwidth due to P2P file sharing. Which of the following should the company deploy to ensure excellent TV and telephone service?

- A. QoS
- B. Load balancing
- C. High availability
- D. Fiber optics

Answer: A

NEW QUESTION 830

- (Exam Topic 5)

Which of the following protocols is used to transfer files over the Internet?

- A. SNMP
- B. NTP
- C. FTP
- D. SIP

Answer: C

NEW QUESTION 834

- (Exam Topic 5)

Which of the following copper cable types should be chosen to run gigabit speeds through a dropped ceiling that returns airflow?

- A. Non-Plenum CAT5
- B. Non-Plenum CAT5e
- C. Plenum CAT5
- D. Plenum CAT5e

Answer: D

NEW QUESTION 838

- (Exam Topic 5)

Which of the following devices is used to distribute network traffic equally over multiple links?

- A. Content filter
- B. DNS server
- C. Load balancer
- D. Proxy server

Answer: C

NEW QUESTION 842

- (Exam Topic 5)

On which of the following OSI model layers would a MAC address be used?

- A. Network
- B. Data Link
- C. Transport
- D. Physical

Answer: B

NEW QUESTION 843

- (Exam Topic 5)

Which of the following network topologies is MOST commonly used by online file sharing websites?

- A. Point to multipoint
- B. Peer-to-peer
- C. Ring
- D. Hybrid

Answer:

B

NEW QUESTION 844

- (Exam Topic 5)

Zach, a network technician, is configuring several switches to be managed remotely. Which of the following must be configured to connect via SSH to each of those devices, as well as to retrieve various parameters?

- A. PoE settings and VTP configuration
- B. SNMP configuration only
- C. IP address and SNMP configuration
- D. QoS and PoE settings

Answer: C

NEW QUESTION 847

- (Exam Topic 5)

Management wants to be sure that the existing wiring infrastructure conforms to CAT5e standards. Which of the following is the correct tool?

- A. Cable certifier
- B. Cable tester
- C. OTDR
- D. Protocol analyzer

Answer: A

NEW QUESTION 852

- (Exam Topic 5)

Zach, a technician, is installing an 802.11n network. Which of the following should he disable to stop broadcasting the network name?

- A. Channel
- B. WEP
- C. SSID
- D. WPA

Answer: C

NEW QUESTION 854

- (Exam Topic 5)

A company has attempted to introduce a new major network segment to allow growth in capacity. On the core switch, a GBIC was used to interconnect with a newly placed downstream distribution switch for the first time. Soon after this implementation, a network flood and an outage occurred between the core and new distribution network modules. Which of the following should the network administrator troubleshoot FIRST in order to rectify the issue?

- A. Check for switching loops between core and distribution switches.
- B. Check whether an incorrect VLAN has been assigned to the new distribution switch.
- C. Check for inconsistent or missing routes between the core and distribution switches.
- D. Check whether the GBIC was set to multi-mode instead of single-mode SFP.

Answer: A

NEW QUESTION 859

- (Exam Topic 5)

A new WAP is configured to only use 802.11g with SSID broadcasts enabled. The encryption is set to WPA and the key is given to the user. A user near the WAP is using a laptop equipped with a 5GHz wireless card and is not able to see the SSID. Which of the following is the problem?

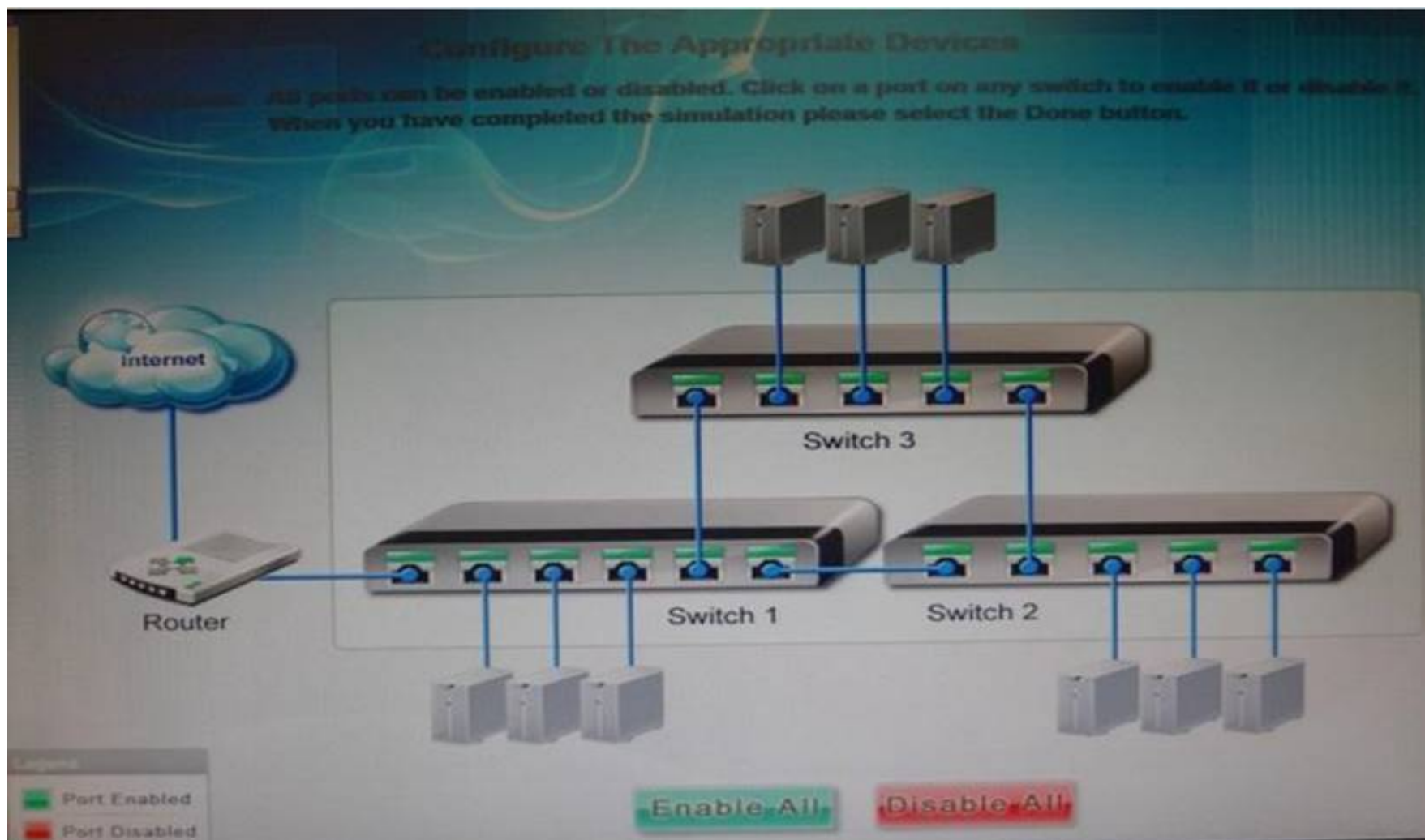
- A. Latency
- B. Incorrect encryption type
- C. EUI-64
- D. Incompatible hardware

Answer: D

NEW QUESTION 863

- (Exam Topic 5)

Workstations are unable to access the internet after a recent power outage. Configure the appropriate devices to ensure All workstations have internet connectivity.



- A. Mastered
- B. Not Mastered

Answer: A

Explanation:

The switches are not connected properly. Connect Switch 1 to switch three on the last port and then connect the last port of the switch 3 to the first port of switch 2. In this way the switches will be connected properly. Click Enable All to enable the switches

NEW QUESTION 867

- (Exam Topic 5)

A new monitoring device is installed in the network that uses ping to determine whether critical network Internet routers are up. After three missing pings, the alarm reports the device is down. The device is now constantly reporting alarms, yet there are no reported Internet problems from users. Which of the following is the MOST likely cause?

- A. A missing route on the alarm device.
- B. Incorrect VLAN assignment on the router.
- C. A missing route on the network routers.
- D. Incorrect speed/duplex setting on the alarm device.

Answer: D

NEW QUESTION 868

- (Exam Topic 5)

Which of the following is a fiber connector that is slightly smaller than a standard copper network cable connector?

- A. BNC
- B. GBIC
- C. MT-RJ
- D. SC

Answer: C

NEW QUESTION 871

- (Exam Topic 5)

Which of the following types of connectors is used with a CAT6 Ethernet cable?

- A. RJ-45
- B. BNC
- C. RJ-11
- D. DB-9

Answer: A

NEW QUESTION 876

- (Exam Topic 5)

Drag and drop the following maximum speeds to their corresponding wireless standards. Tokens can be used more than once.

Wireless Standard	Maximum Speed	
802.11a		10Mbps
802.11b		11Mbps
802.11g		54Mbps
802.11n		56Mbps
		>100Mbps

- A. Mastered
- B. Not Mastered

Answer: A

Explanation:

Wireless Standard	Maximum Speed	
802.11a	54Mbps	10Mbps
802.11b	11Mbps	11Mbps
802.11g	54Mbps	54Mbps
802.11n	>100Mbps	56Mbps
		>100Mbps

NEW QUESTION 880

- (Exam Topic 5)

Which of the following is used to assign an IP address to a device?

- A. DHCP
- B. NTP
- C. DNS
- D. RADIUS

Answer: A

NEW QUESTION 883

- (Exam Topic 5)

A technician has low signal strength connecting two wireless bridges. Which of the following could be the problem?

- A. Low PoE wattage
- B. Opposing antenna polarizations
- C. Short distance between antennas
- D. WPA 2 encryption

Answer: B

NEW QUESTION 885

- (Exam Topic 5)

A client has just leased a new office space in a busy commercial building and would like to install a wireless network. Several other tenants are on the same floor. Multiple wireless networks are present in the building. Which of the following can be changed on the client's wireless network to help ensure that interference from other wireless networks is at a minimum?

- A. WPA encryption key selection
- B. Channel selection
- C. Antenna types
- D. Disable SSID

Answer: B

NEW QUESTION 889

- (Exam Topic 5)

Assigning IP addresses from a pool of predetermined available addresses is the role of which of the following network appliances?

- A. RADIUS
- B. DNS
- C. DHCP
- D. IDS

Answer: C

NEW QUESTION 890

- (Exam Topic 5)

A user reports that several spots within the company's office have intermittent connectivity issues with the newly installed wireless network. There are several WAPs located around the office to provide a strong signal wherever the users are. Which of the following is the MOST likely cause of the problem?

- A. Incompatible network card
- B. Channel overlap
- C. Latency
- D. WEP encryption

Answer: B

NEW QUESTION 893

- (Exam Topic 5)

Which of the following network protocols is used to transport email between servers?

- A. IMAP4
- B. POP3
- C. SNMP
- D. SMTP

Answer: D

NEW QUESTION 896

.....

THANKS FOR TRYING THE DEMO OF OUR PRODUCT

Visit Our Site to Purchase the Full Set of Actual JK0-023 Exam Questions With Answers.

We Also Provide Practice Exam Software That Simulates Real Exam Environment And Has Many Self-Assessment Features. Order the JK0-023 Product From:

<https://www.2passeasy.com/dumps/JK0-023/>

Money Back Guarantee

JK0-023 Practice Exam Features:

- * JK0-023 Questions and Answers Updated Frequently
- * JK0-023 Practice Questions Verified by Expert Senior Certified Staff
- * JK0-023 Most Realistic Questions that Guarantee you a Pass on Your FirstTry
- * JK0-023 Practice Test Questions in Multiple Choice Formats and Updatesfor 1 Year