

Exam Questions 300-510

Implementing Cisco Service Provider Advanced Routing Solutions (SPRI)

<https://www.2passeasy.com/dumps/300-510/>



NEW QUESTION 1

PE-A vrf definition Customer-A rd 65000:1111 route-target export 65000:1111 route-target import 65000:1111 ! address-family ipv4 mdt default 233.0.0.1 mdt data 233.0.0.2 0.0.0.0 threshold 100 exit-address-family	PE-B vrf definition Customer-A rd 65000:1111 route-target export 65000:1111 route-target import 65000:1111 ! address-family ipv4 mdt default 233.0.0.1 mdt data 233.0.0.3 0.0.0.0 threshold 100 exit-address-family
---	---

Refer to the exhibit. Which tree does multicast traffic follow?

- A. shared tree
- B. MDT default
- C. source tree
- D. MDT voice

Answer: B

NEW QUESTION 2

Refer to the exhibit. Which effect of this configuration is true?

- A. It sets the keepalive timer to 30 seconds and the hold timer to 240 seconds.
- B. It sets the keepalive timer to 30 milliseconds and the hold timer to 240 milliseconds
- C. It sets the hold timer to 30 milliseconds and the keepalive timer to 240 milliseconds
- D. It sets the hold timer to 30 seconds and the keepalive timer to 240 seconds

Answer: A

NEW QUESTION 3

```

RP/0/0/CPU0:XR1#show run

route-policy AGGRO
  if destination in (10.0.0.0/8 ge 8 le 25) then
    set community (10:825)
  endif
  if destination in (10.2.0.0/24) then
    drop
  endif
  if destination in (10.1.0.0/24) then
    suppress-route
  endif
end-policy
!
!
router bgp 1
  bgp router-id 192.168.0.7
  address-family ipv4 unicast
    aggregate-address 10.0.0.0/8 route-policy AGGRO
RP/0/0/CPU0:XR1#

```

Refer to the exhibit. A network operator is working to filter routes from being advertised that are covered under an aggregate announcement. The receiving router of the aggregate announcement block is still getting some of the more specific routes plus the aggregate. Which configuration change ensures that only the aggregate is announced now and in the future if other networks are to be added?

- A. Configure the summary-only keyword on the aggregate command
- B. Set each specific route in the AGGRO policy to drop instead of suppress-route
- C. Filter the routes on the receiving router
- D. Set each specific route in the AGGRO policy to remove instead of suppress-route

Answer: A

NEW QUESTION 4

```
RP/0/0/CPU0:XR3#show bgp 10.11.11.0
Thu Jun 20 20:44:15.749 UTC
BGP routing table entry for 10.11.11.0/24
Versions:
  Process          bRIB/RIB      SendTblVer
  Speaker          9             9
Paths: (2 available, best #2)
  Advertised to update-groups (with more than one peer):
    0.1
  Path #1: Received by speaker 0
  Not advertised to any peer
  1
    10.0.0.9 from 10.0.0.9 (192.168.0.1)
      Origin IGP, metric 0, localpref 100, valid, external
      Received Path ID 0, Local Path ID 0, version 0
      Origin-AS validity: not-found
  Path #2: Received by speaker 0
  Advertised to update-groups (with more than one peer):
    0.1
  1
    10.0.0.13 from 10.0.0.13 (192.168.0.2)
      Origin IGP, metric 0, localpref 100, weight 651, valid, external, best, group-best
      Received Path ID 0, Local Path ID 0, version 9
```

Refer to the exhibit. A network operator is getting the route for 10.11.11.0/24 from two upstream providers on #XR3. The network operator must configure #XR3 to force the 10.11.11.0/24 prefix to route via next hop of 10.0.0.9 as primary when available. Which of these can the operator use the routing policy language for, to enforce this traffic forwarding path?

- A. weight of 0 on the prefix coming from 192.168.0.2
- B. lower local preference on the prefix coming from 192.168.0.2
- C. higher local preference on the prefix coming from 192.168.0.1
- D. weight of 100 on the prefix coming from 192.168.0.1

Answer: C

NEW QUESTION 5

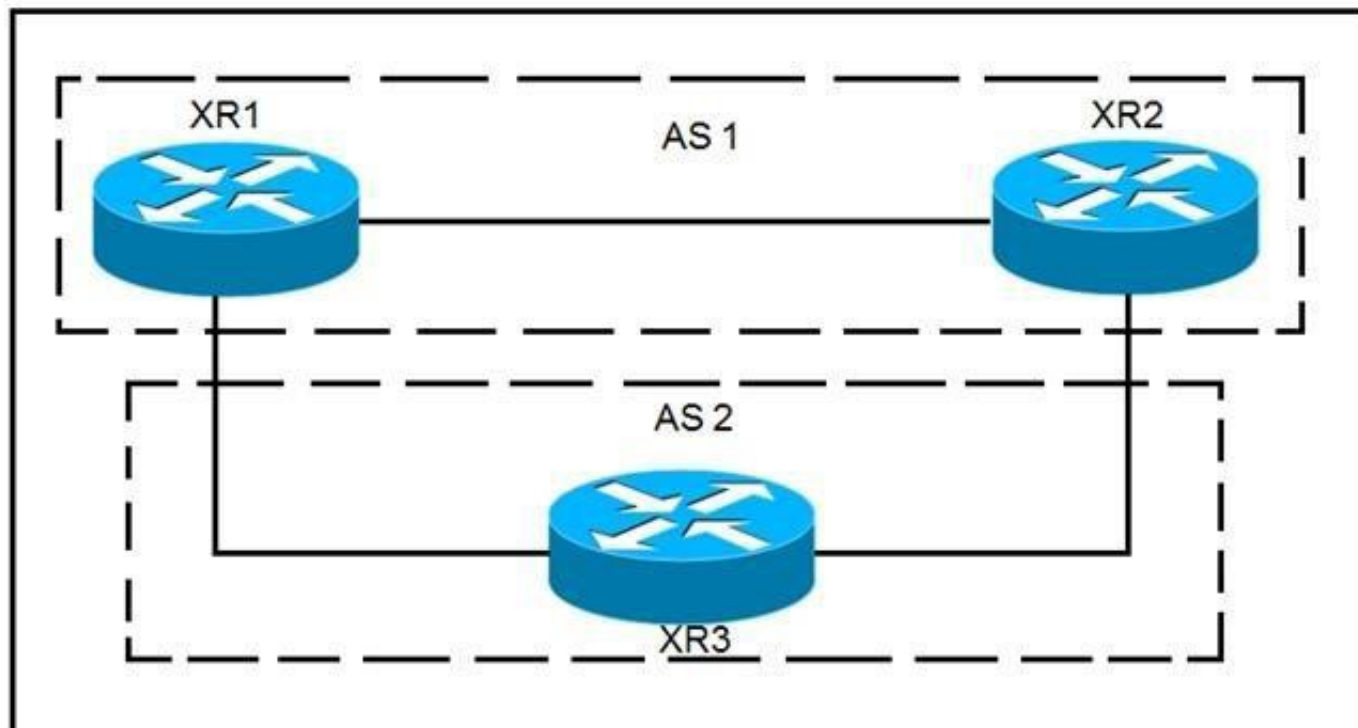
Refer to the exhibit. Which LSA type is indicated by this router output?

```
OSPF Router with ID (192.168.1.1) (Process ID 1)
Router Link States (Area 1234)
LS age: 691
Options: (No TOS-capability, DC)
LS Type: Router Links
Link State ID: 192.168.1.1
```

- A. type 3 LSA
- B. type 4 LSA
- C. type 1 LSA
- D. type 2 LSA

Answer: C

NEW QUESTION 6



Refer to the exhibit. XR1 and XR2 are sending the prefix 10.11.11.0/24 to XR3. A configured policy on XR1 is incorrectly prepending AS path 11 11 12 12 onto this prefix. A network operator wants to add a policy onto XR3 that will not allow the falsely prepending prefix from being installed. Which policy configuration applied to the XR3 neighbor configuration for XR1 can accomplish this requirement without impact to other or future received routes?

- A. `route-policy NO_PREPEND`
`if as-path passes-through '11' then`
`pass`
`else`
`drop`
`endif`
`end-policy`
- B. `route-policy NO_PREPEND`
`if as-path prepends`
`drop`
`else`
`pass`
`endif`
`end-policy`
- C. `route-policy NO_PREPEND`
`if as-path passes-through '1' then`
`pass`
`else`
`drop`
`endif`
`end-policy`
- D. `route-policy NO_PREPEND`
`if as-path passes-through '11' then`
`drop`
`else`
`pass`
`endif`
`end-policy`

Answer: D

NEW QUESTION 7

Refer to the exhibit. Router 1 is a core ABR in a Cisco Unified MPLS environment. All of the router 1 BGP peers are established, but traffic between customers is failing. Which BGP configuration must be added to the configuration?

- A. It must be configured for graceful restart
- B. It must be configured with a route reflector
- C. It must be configured with send labels
- D. It must be configured with PIC edge

Answer: C

NEW QUESTION 8

What can be used to determine a path from the head-end to a tail-end router when implementing SR-TE with a head-end, with little information on the network topology?

- A. traffic controller
- B. path computation engine
- C. tail-end router
- D. SNMP server

Answer: B

NEW QUESTION 9

R1#sh ip int bri				
Interface	IP-Address	OK?	Method Status	Protocol
FastEthernet0/0	10.1.12.1	YES	manual up	up
FastEthernet0/1	10.1.13.1	YES	manual up	up
R1#sh run s router bgp				
!				
router bgp 123				
bgp log-neighbor-changes				
neighbor TEST peer-group				
neighbor TEST remote-as 2 alternate-as 3				
neighbor 10.1.12.2 peer-group TEST				
neighbor 10.1.13.3 peer-group TEST				
R2#sh ip int bri				
Interface	IP-Address	OK?	Method Status	Protocol
FastEthernet0/0	10.1.12.2	YES	manual up	up
R2#sh run s router bgp				
!				
router bgp 2				
bgp log-neighbor-changes				
neighbor 10.1.12.1 remote-as 123				
R3#sh ip int bri				
Interface	IP-Address	OK?	Method Status	Protocol
FastEthernet0/1	10.1.13.3	YES	manual up	up
R3#sh run s router bgp				
router bgp 3				
bgp log-neighbor-changes				
neighbor 10.1.13.1 remote-as 123				

Refer to the exhibit. R1 is directly connected to R2 and R3. R1 is in BGP AS 123, R2 is in BGP AS 2, and R3 is in BGP AS 3. Assume that there is no connectivity issue between R1, R2 and R1, R3. Which result between BGP peers R1, R2 and R1, R3 is true?

- A. The BGP session does not come up between R1 and R2 and between R1 and R3.
- B. The BGP session comes up between R1 and R2 and between R1 and R3.
- C. The BGP session comes up between R1 and R3, but not between R1 and R2.
- D. The BGP session comes up between R1 and R2, but not between R1 and R3.

Answer: B

NEW QUESTION 10

DRAG DROP

An engineer is troubleshooting end-to-end customer traffic across an MPLS VPN service provider network. Which tasks should the engineer use to solve the routing issues? Drag and drop the table types from the left onto the most useful troubleshooting tasks/router types on the right. (Not all options are used.) Select and Place:

- A. Mastered
- B. Not Mastered

Answer: A

NEW QUESTION 10

Which feature is used in multicast routing to prevent loops?

- A. STP
- B. inverse ARP
- C. RPF
- D. split horizon

Answer: C

NEW QUESTION 13

Which two statements about route reflectors are true? (Choose two.)

- A. Routes received from nonclient peers are reflected to route reflector clients as well as nonclient peers.
- B. Routes received from nonclient peers are reflected to route reflector cluster as well as OSPF peers.
- C. If a router received an iBGP route with the originator-ID attribute set to its own router ID, the route is discarded.
- D. Routes received from a route reflector client is reflected to other clients and nonclient peers.
- E. If a route reflector receives a route with a cluster-list attribute containing a different cluster ID, the route is discarded.

Answer: CD

NEW QUESTION 17

You have configured routing policies on a Cisco IOS XR device with routing policy language. Which two statements about the routing policies are true? (Choose two.)

- A. The routing policies affect BGP-related routes only.
- B. If you make edits to an existing routing policy without pasting the full policy into the CLI, the previous policy is overwritten.
- C. You can change an existing routing policy by editing individual statements.
- D. The routing policies are implemented in a sequential manner.
- E. The routing policies are implemented using route maps.

Answer: CD

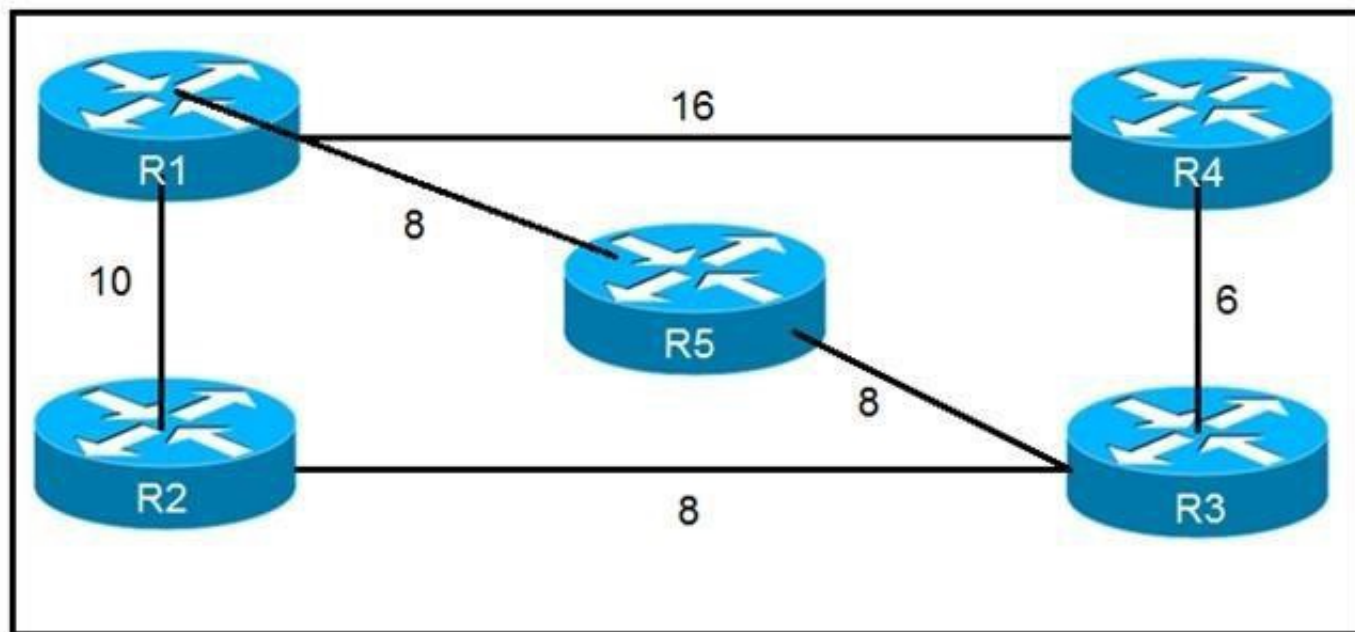
NEW QUESTION 21

Refer to the exhibit. CE1 and CE2 cannot communicate through the service provider BGP peering is established between PE1 and PE2. IS-IS is the only routing protocol running in the service provider core. What step can be done to troubleshoot the issue?

- A. Switch the IGPs running in the core from IS-IS to OSPF to support a Cisco MPLS TE tunnel from PE1 to PE2.
- B. Configure BGP between CE and PE routers.
- C. Confirm that IS-IS is running with metric-style narrow.
- D. Verify the MPLS LSPs.

Answer: C

NEW QUESTION 25



Refer to the exhibit. Which router does R1 install as an alternate next hop when trying to reach R3 if LFA is enabled?

- A. R5
- B. R3
- C. R4
- D. R2

Answer: D

NEW QUESTION 30

Which output from the show isis interface command helps an engineer troubleshoot an IS-IS adjacency problem on a Cisco IOS-XR platform?

- A. metric
- B. priority
- C. circuit type
- D. hello interval

Answer: D

NEW QUESTION 35

A network engineer is troubleshooting OSPF multiarea. Which Cisco IOS XR feature should the engineer use in order to streamline OSPF issue?

- A. hierarchical CLI
- B. DR support for topology management
- C. routing process enabled by default on all interfaces
- D. show ip ospf topology command

Answer: A

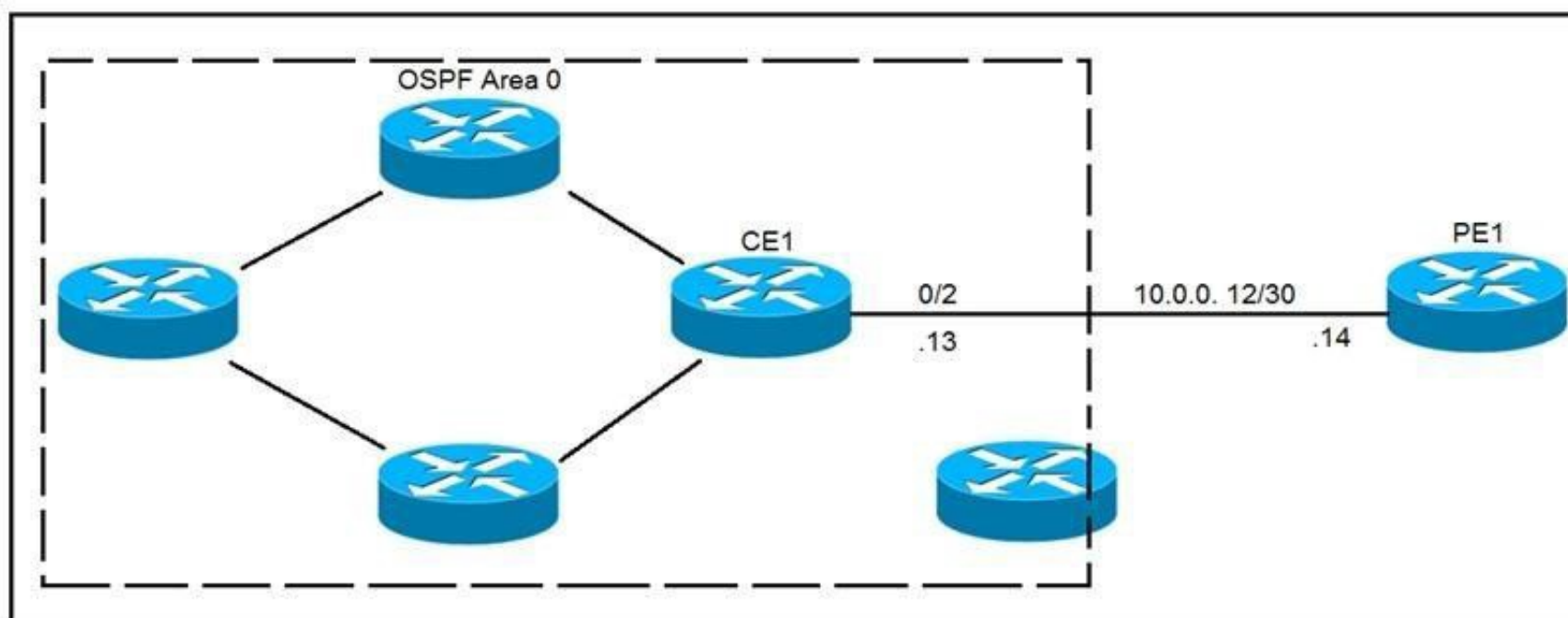
NEW QUESTION 38

In a PIM-SM environment, which mechanism determines the traffic that a receiver receives?

- A. The receiver explicitly requests its desired traffic from the RP on the shared tree.
- B. The receiver explicitly requests traffic from a single source, which responds by forwarding all traffic.
- C. The RP on the shared tree floods traffic out of all PIM configured interfaces.
- D. The receiver explicitly requests traffic from each desired source, which responds by sending all traffic.

Answer: D

NEW QUESTION 42



Refer to the exhibit. CE1 is the gateway router into the provider network via PE1. A network operator must inject a default route into OSPF area 0. All devices inside area 0 must be able to reach PE1. Which configuration achieves this goal?

- A.

```
#CE1
router ospf 1
default-information originate always
```
- B.

```
#CE1
ip route 0.0.0.0 0.0.0.0 GigabitEthernet0/2 10.0.0.14
!
router ospf 1
default-information originate
```

Answer: B

NEW QUESTION 44

Which two characteristics unique to SSM when compared to ASM are true? (Choose two.)

- A. It uses SPT switchover
- B. It uses (*,G) exclusively
- C. It uses IGMPv3
- D. It uses RP
- E. It uses (S,G) exclusively

Answer: CE

NEW QUESTION 48

Refer to the exhibit. Which attribute can router 1 alter so that only other iBGP peers prefer to use 192.168.4.2 as the next hop for route 192.168.3.0/24?

- A. MED
- B. local preference
- C. origin

D. weight

Answer: A

NEW QUESTION 52

.....

THANKS FOR TRYING THE DEMO OF OUR PRODUCT

Visit Our Site to Purchase the Full Set of Actual 300-510 Exam Questions With Answers.

We Also Provide Practice Exam Software That Simulates Real Exam Environment And Has Many Self-Assessment Features. Order the 300-510 Product From:

<https://www.2passeasy.com/dumps/300-510/>

Money Back Guarantee

300-510 Practice Exam Features:

- * 300-510 Questions and Answers Updated Frequently
- * 300-510 Practice Questions Verified by Expert Senior Certified Staff
- * 300-510 Most Realistic Questions that Guarantee you a Pass on Your FirstTry
- * 300-510 Practice Test Questions in Multiple Choice Formats and Updatesfor 1 Year