

Microsoft

Exam Questions MS-100

Microsoft 365 Identity and Services



NEW QUESTION 1

- (Exam Topic 1)
Your company has a Microsoft Azure Active Directory (Azure AD) tenant named contoso.onmicrosoft.com. You purchase a domain named contoso.com from a registrar and add all the required DNS records.
You create a user account named User1. User1 is configured to sign in as user1@contoso.onmicrosoft.com. You need to configure User1 to sign in as user1@contoso.com.
Which three actions should you perform in sequence? To answer, move the appropriate actions from the list of actions to the answer area and arrange them in the correct order.

Actions

Run Set-MsolDomainAuthentication - TenantID contoso.com

Modify the email address of User1.

Modify the username of User1.

Verify the custom domain.

Add a contoso.com as a SAN for an X.509 certificate.

Add a custom domain name.

Answer Area

- A. Mastered
- B. Not Mastered

Answer: A

Explanation:

Actions

Run Set-MsolDomainAuthentication - TenantID contoso.com

Modify the email address of User1.

Modify the username of User1.

Verify the custom domain.

Add a contoso.com as a SAN for an X.509 certificate.

Add a custom domain name.

Answer Area

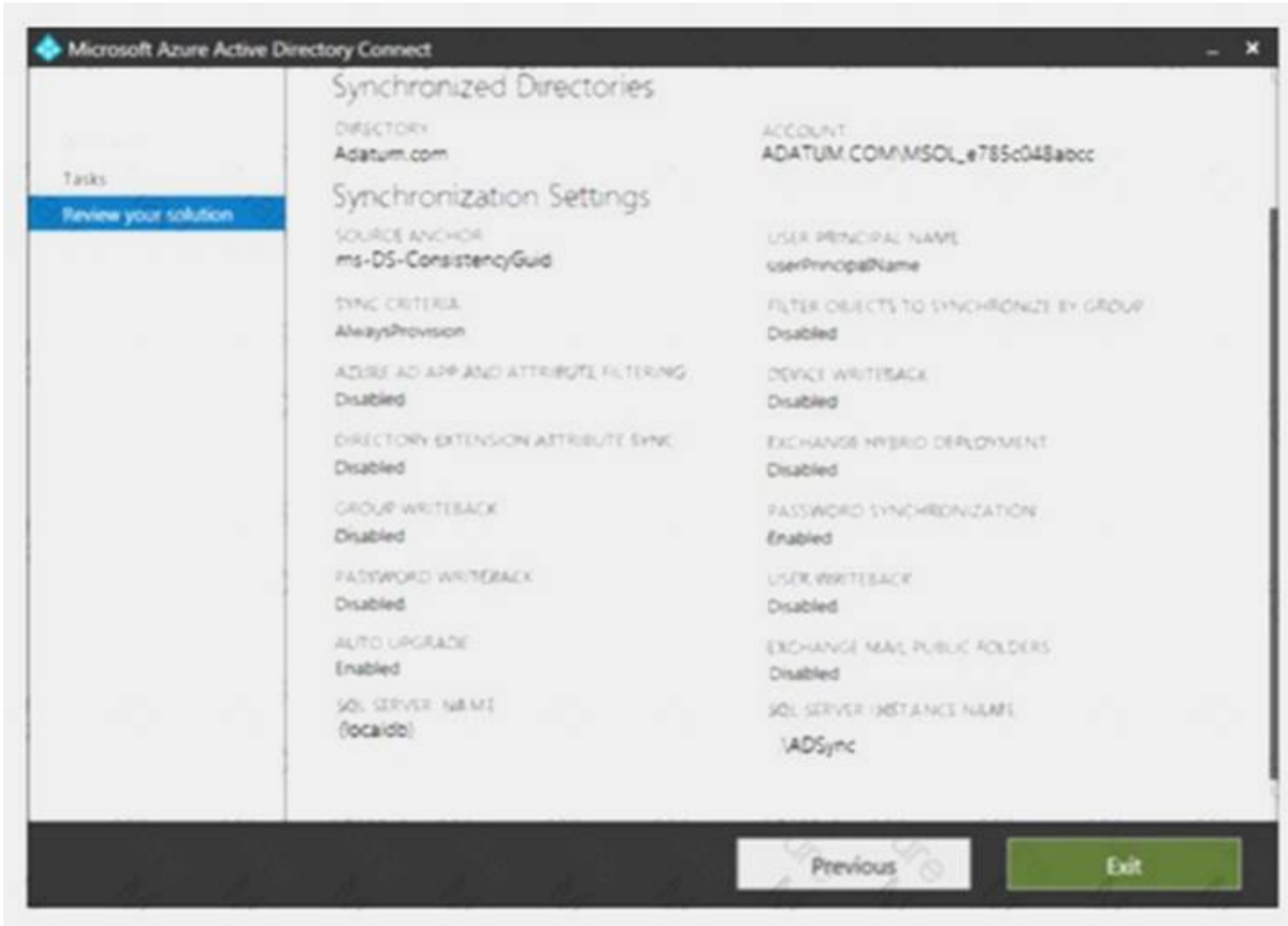
Add a custom domain name.

Verify the custom domain.

Modify the username of User1.

NEW QUESTION 2

- (Exam Topic 1)
Your network contains an on-premises Active Directory domain that is synced to Microsoft Azure Active Directory (Azure AD) as shown in the following exhibit.



An on-premises Active Directory user account named Allan Yoo is synchronized to Azure AD. You view Allan's account from Microsoft 365 and notice that his username is set to Allan@contoso.onmicrosoft.com.
For each of the following statements, select Yes if the statement is true. Otherwise, select No. NOTE: Each correct selection is worth one point.

Statements	Yes	No
From the Azure portal, you can reset the password of Allan Yoo.	<input type="radio"/>	<input type="radio"/>
From the Azure portal, you can configure the job title of Allan Yoo.	<input type="radio"/>	<input type="radio"/>
From the Azure portal, you can configure the usage location of Allan Yoo.	<input type="radio"/>	<input type="radio"/>

- A. Mastered
- B. Not Mastered

Answer: A

Explanation:

Statements	Yes	No
From the Azure portal, you can reset the password of Allan Yoo.	<input type="radio"/>	<input checked="" type="radio"/>
From the Azure portal, you can configure the job title of Allan Yoo.	<input type="radio"/>	<input checked="" type="radio"/>
From the Azure portal, you can configure the usage location of Allan Yoo.	<input checked="" type="radio"/>	<input type="radio"/>

NEW QUESTION 3

- (Exam Topic 1)

Note: This question is part of a series of questions that present the same scenario. Each question in the series contains a unique solution that might meet the stated goals. Some question sets might have more than one correct solution, while others might not have a correct solution.
After you answer a question in this section, you will NOT be able to return to it. As a result these questions will not appear in the review screen.
Your company has a main office and three branch offices. All the branch offices connect to the main office by using a WAN link. The main office has a high-speed Internet connection. All the branch offices connect to the Internet by using the main office connection.
Users use Microsoft Outlook 2016 to connect to 4 Microsoft Exchange Server mailbox hosted in the main office.
The users report that when the WAN link in their office becomes unavailable, they cannot access their mailbox.
You create a Microsoft 365 subscription, and then migrate all the user data to Microsoft 365.
You need to ensure that all the users can continue to use Outlook to receive email messages if a WAN link fails.
Solution: You deploy a site-to-site VPN from each branch office to Microsoft Azure. Does this meet the goal?

- A. Yes
- B. NO

Answer: B

NEW QUESTION 4

- (Exam Topic 1)

Your company has a Microsoft Azure Active Directory (Azure AD) tenant named contoso.com that includes the users shown in the following table.

Name	Usage location	Membership
User1	<i>Not applicable</i>	Group1
User2	United States	Group2
User3	United States	<i>Not applicable</i>

Group2 is a member of Group1.

You assign a Microsoft Office 365 Enterprise E3 license to User2 as shown in the following exhibit.

License options

Office 365 Enterprise E3

Azure Rights Management	<input type="checkbox"/> Off	<input type="checkbox"/> On
Exchange Online (Plan 2)	<input type="checkbox"/> Off	<input type="checkbox"/> On
Flow for Office 365	<input type="checkbox"/> Off	<input type="checkbox"/> On
Microsoft Forms (Plan E3)	<input type="checkbox"/> Off	<input type="checkbox"/> On
Microsoft Planner	<input type="checkbox"/> Off	<input type="checkbox"/> On
Microsoft StaffHub	<input type="checkbox"/> Off	<input type="checkbox"/> On
Microsoft Teams	<input type="checkbox"/> Off	<input type="checkbox"/> On
Office 365 ProPlus	<input type="checkbox"/> Off	<input type="checkbox"/> On
Office Online	<input type="checkbox"/> Off	<input type="checkbox"/> On
PowerApps for Office 365	<input type="checkbox"/> Off	<input type="checkbox"/> On
SharePoint Online (Plan 2)	<input type="checkbox"/> Off	<input checked="" type="checkbox"/> On
Skype for Business Online (Plan 2)	<input type="checkbox"/> Off	<input type="checkbox"/> On
Stream for Office 365	<input type="checkbox"/> Off	<input type="checkbox"/> On
Sway	<input type="checkbox"/> Off	<input type="checkbox"/> On
To-Do (Plan 2)	<input type="checkbox"/> Off	<input type="checkbox"/> On
Yammer Enterprise	<input type="checkbox"/> Off	<input type="checkbox"/> On

You assign Office 365 Enterprise E3 licenses to Group1 as shown in the following exhibit.

License options

Office 365 Enterprise E3

Azure Rights Management	<input checked="" type="checkbox"/> Off	<input type="checkbox"/> On
Exchange Online (Plan 2)	<input type="checkbox"/> Off	<input checked="" type="checkbox"/> On
Flow for Office 365	<input checked="" type="checkbox"/> Off	<input type="checkbox"/> On
Microsoft Forms (Plan E3)	<input checked="" type="checkbox"/> Off	<input type="checkbox"/> On
Microsoft Planner	<input checked="" type="checkbox"/> Off	<input type="checkbox"/> On
Microsoft StaffHub	<input checked="" type="checkbox"/> Off	<input type="checkbox"/> On
Microsoft Teams	<input checked="" type="checkbox"/> Off	<input type="checkbox"/> On
Office 365 ProPlus	<input checked="" type="checkbox"/> Off	<input type="checkbox"/> On
Office Online	<input checked="" type="checkbox"/> Off	<input type="checkbox"/> On
PowerApps for Office 365	<input checked="" type="checkbox"/> Off	<input type="checkbox"/> On
SharePoint Online (Plan 2)	<input checked="" type="checkbox"/> Off	<input type="checkbox"/> On
Skype for Business Online (Plan 2)	<input checked="" type="checkbox"/> Off	<input type="checkbox"/> On
Stream for Office 365	<input checked="" type="checkbox"/> Off	<input type="checkbox"/> On
Sway	<input checked="" type="checkbox"/> Off	<input type="checkbox"/> On
To-Do (Plan 2)	<input checked="" type="checkbox"/> Off	<input type="checkbox"/> On
Yammer Enterprise	<input checked="" type="checkbox"/> Off	<input type="checkbox"/> On

For each of the following statements, select Yes if the statement is true. Otherwise, select No. NOTE: Each correct selection is worth one point.

Statements	Yes	No
User1 is licensed to use Microsoft Exchange Online.	<input type="radio"/>	<input type="radio"/>
User1 is licensed to use Microsoft Exchange Online and Microsoft Share Point Online.	<input type="radio"/>	<input type="radio"/>
If you add User3 to Group2, the user will be licensed to use Microsoft Exchange Online.	<input type="radio"/>	<input type="radio"/>

- A. Mastered
- B. Not Mastered

Answer: A

Explanation:

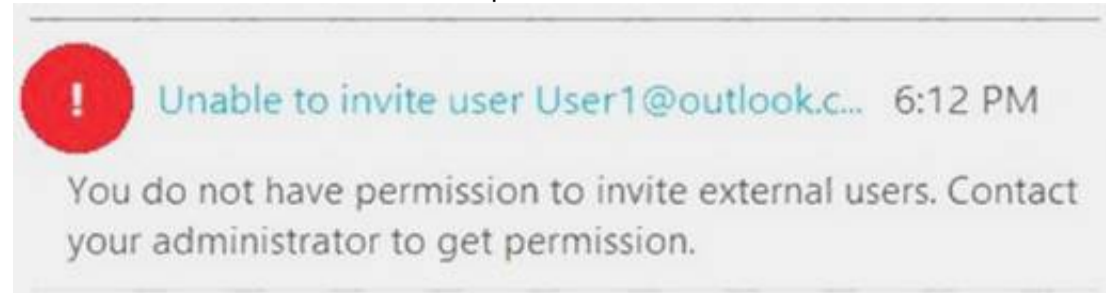
Group-based licensing currently does not support groups that contain other groups (nested groups). If you apply a license to a nested group, only the immediate first-level user members of the group have the licenses applied.
References:
<https://docs.microsoft.com/en-us/azure/active-directory/users-groups-roles/licensing-group-advanced>

NEW QUESTION 5

- (Exam Topic 1)

You have a Microsoft Azure Active Directory (Azure AD) tenant named contoso.onmicrosoft.com. An external user has a Microsoft account that uses an email address of user1@outlook.com.

An administrator named Admin1 attempts to create a user account for the external user and receives the error message shown in the following exhibit.



You need to ensure that Admin1 can add the user.

What should you do from the Azure Active Directory admin center?

- A. Add a custom domain name named outlook.com.
- B. Modify the Authentication methods.
- C. Modify the External collaboration settings.
- D. Assign Admin1 the Security administrator role.

Answer: C

NEW QUESTION 6

- (Exam Topic 1)

Your network contains an on-premises Active Directory domain. You have a Microsoft 365 subscription.

You implement a directory synchronization solution that uses pass-through authentication.

You configure Microsoft Azure Active Directory (Azure AD) smart lockout as shown in the following exhibit.



You discover that Active Directory users can use the passwords in the custom banned passwords list. You need to ensure that banned passwords are effective for all users.

Which three actions should you perform? Each correct answer presents part of the solution. NOTE: Each correct selection is worth one point.

- A. From a domain controller, install the Azure AD Password Protection Proxy.
- B. From a domain controller, install the Microsoft AAD Application Proxy connector.
- C. From Custom banned passwords, modify the Enforce custom list setting.
- D. From Password protection for Windows Server Active Directory, modify the Mode setting.
- E. From all the domain controllers, install the Azure AD Password Protection DC Agent.
- F. From Active Directory, modify the Default Domain Policy.

Answer: ACE

NEW QUESTION 7

- (Exam Topic 1)

Your company has a main office and 20 branch offices in North America and Europe. Each branch office connects to the main office by using a WAN link. All the offices connect to the Internet and resolve external host names by using the main office connections.

You plan to deploy Microsoft 365 and to implement a direct Internet connection in each office.

You need to recommend a change to the infrastructure to provide the quickest possible access to Microsoft 365 services.

What is the best recommendation to achieve the goal? More than one answer choice may achieve the goal. Select the BEST answer.

- A. For all the client computers in the branch offices, modify the MTU setting by using a Group Policy object (GPO).
- B. In each branch office, deploy a proxy server that has user authentication enabled.

- C. In each branch office, deploy a firewall that has packet inspection enabled.
- D. In each branch office, configure name resolution so that all external hosts are redirected to public DNS servers directly.

Answer: D

NEW QUESTION 8

- (Exam Topic 1)

Note: This question is part of a series of questions that present the same scenario. Each question in the series contains a unique solution that might meet the stated goals. Some question sets might have more than one correct solution, while others might not have a correct solution.

After you answer a question in this section, you will NOT be able to return to it. As a result, these questions will not appear in the review screen.

Your company has a Microsoft Office 365 tenant.

You suspect that several Office 365 features were recently updated.

You need to view a list of the features that were recently updated in the tenant.

Solution: You review the Security & Compliance report in the Microsoft 365 admin center. Does this meet the goal?

- A. Yes
- B. No

Answer: B

NEW QUESTION 9

- (Exam Topic 1)

Your network contains an Active Directory forest. The forest contains two domains named contoso.com and adatum.com.

Your company recently purchased a Microsoft 365 subscription. You deploy a federated identity solution to the environment.

You use the following command to configure contoso.com for federation. Convert-MsolDomaintoFederated –DomainName contoso.com

In the Microsoft 365 tenant, an administrator adds and verifies the adatum.com domain name. You need to configure the adatum.com Active Directory domain for federated authentication.

Which two actions should you perform before you run the Azure AD Connect wizard? Each correct answer presents part of the solution.

NOTE: Each correct selection is worth one point.

- A. From Windows PowerShell, run the Convert-MsolDomaintoFederated–DomainName contoso.com –SupportMultipleDomain command.
- B. From Windows PowerShell, run the New-MsolFederatedDomain–SupportMultipleDomain -DomainName contoso.com command.
- C. From Windows PowerShell, run the New-MsolFederatedDomain-DomainName adatum.com command.
- D. From Windows PowerShell, run the Update-MSOLFederatedDomain–DomainName contoso.com –SupportMultipleDomain command.
- E. From the federation server, remove the Microsoft Office 365 relying party trust.

Answer: AE

NEW QUESTION 10

- (Exam Topic 1)

Your network contains two Active Directory forests. Each forest contains two domains. All client computers run Windows 10 and are domain-joined.

You plan to configure Hybrid Azure AD join for the computers. You create Microsoft Azure Active Directory (Azure AD) tenant.

You need to ensure that the computers can discover the Azure AD tenant. What should you create?

- A. a new computer account for each computer
- B. a new service connection point (SCP) for each domain
- C. a new trust relationship for each forest
- D. a new service connection point (SCP) for each forest

Answer: D

Explanation:

References:

<https://docs.microsoft.com/en-us/azure/active-directory/devices/hybrid-azuread-join-manual>

NEW QUESTION 10

- (Exam Topic 1)

Note: This question is part of a series of questions that present the same scenario. Each question in the series contains a unique solution that might meet the stated goals. Some question sets might have more than one correct solution, while others might not have a correct solution.

After you answer a question in this section, you will NOT be able to return to it. As a result, these questions will not appear in the review screen.

Your company has a Microsoft Office 365 tenant.

You suspect that several Office 365 features were recently updated.

You need to view a last of the features that were recently updated in the tenant. Solution: You use the View service requests option in the Microsoft 365 admin center. Does this meet the goal?

- A. Yes
- B. NO

Answer: B

NEW QUESTION 13

- (Exam Topic 1)

Note: This question is part of a series of questions that present the same scenario. Each question in the series contains a unique solution that might meet the stated goals. Some question sets might have more than one correct solution, while others might not have a correct solution.

After you answer a question in this section, you will NOT be able to return to it. As a result these questions will not appear in the review screen.

Your company has a main office and three branch offices. All the branch offices connect to the main office by using a WAN link. The main office has a high-speed Internet connection. All the branch offices connect to the Internet by using the main office connection.

Users use Microsoft Outlook 2016 to connect to 4 Microsoft Exchange Server mailbox hosted in the main

office.

The users report that when the WAN link in their office becomes unavailable, they cannot access their mailbox.

You create a Microsoft 365 subscription, and then migrate all the user data to Microsoft 365.

You need to ensure that all the users can continue to use Outlook to receive email messages if a WAN link fails.

Solution: For each device, you configure an additional Outlook profile that uses IMAP. Does this meet the goal?

A. Yes

B. NO

Answer: B

NEW QUESTION 18

- (Exam Topic 1)

You recently migrated your on-premises email solution to Microsoft Exchange Online and are evaluating which licenses to purchase.

You want the members of two groups named IT and Managers to be able to use the features shown in the following table.

Feature	Available to
Microsoft Azure Active Directory (Azure AD) conditional access	IT group, Managers group
Microsoft Azure Active Directory (Azure AD) Privileged Identity Management	IT group

The IT group contains 50 users. The Managers group contains 200 users.

You need to recommend which licenses must be purchased for the planned solution. The solution must minimize licensing costs.

Which licenses should you recommend?

A. 250 Microsoft 365 E3 only

B. 50 Microsoft 365 E 3 and 200 Microsoft 365 E5

C. 250 Microsoft 365 E5 only

D. 200 Microsoft 365 E3 and 50 Microsoft 365 E5

Answer: D

NEW QUESTION 21

- (Exam Topic 1)

You have a Microsoft 365 Enterprise E5 subscription.

You need to enforce multi-factor authentication on all cloud-based applications for the users in the finance department.

What should you do?

A. Create an activity policy.

B. Create a Sign-in risk policy.

C. Create a session policy.

D. Create an app permission policy.

Answer: B

Explanation:

References:

<https://docs.microsoft.com/en-us/azure/active-directory/identity-protection/howto-sign-in-risk-policy>

NEW QUESTION 25

- (Exam Topic 1)

Your company has a Microsoft Azure Active Directory (Azure AD) tenant named contoso.com that includes the users shown in the following table.

Name	Usage location	Membership
User1	United States	Group1, Group2
User2	<i>Not applicable</i>	Group2
User3	<i>Not applicable</i>	Group1
User4	Canada	Group1

Group2 is a member of Group1.

You assign a Microsoft Office 365 Enterprise E3 license to Group1. You need to identify how many Office 365 E3 licenses are assigned. What should you identify?

A. 1

B. 2

C. 3

D. 4

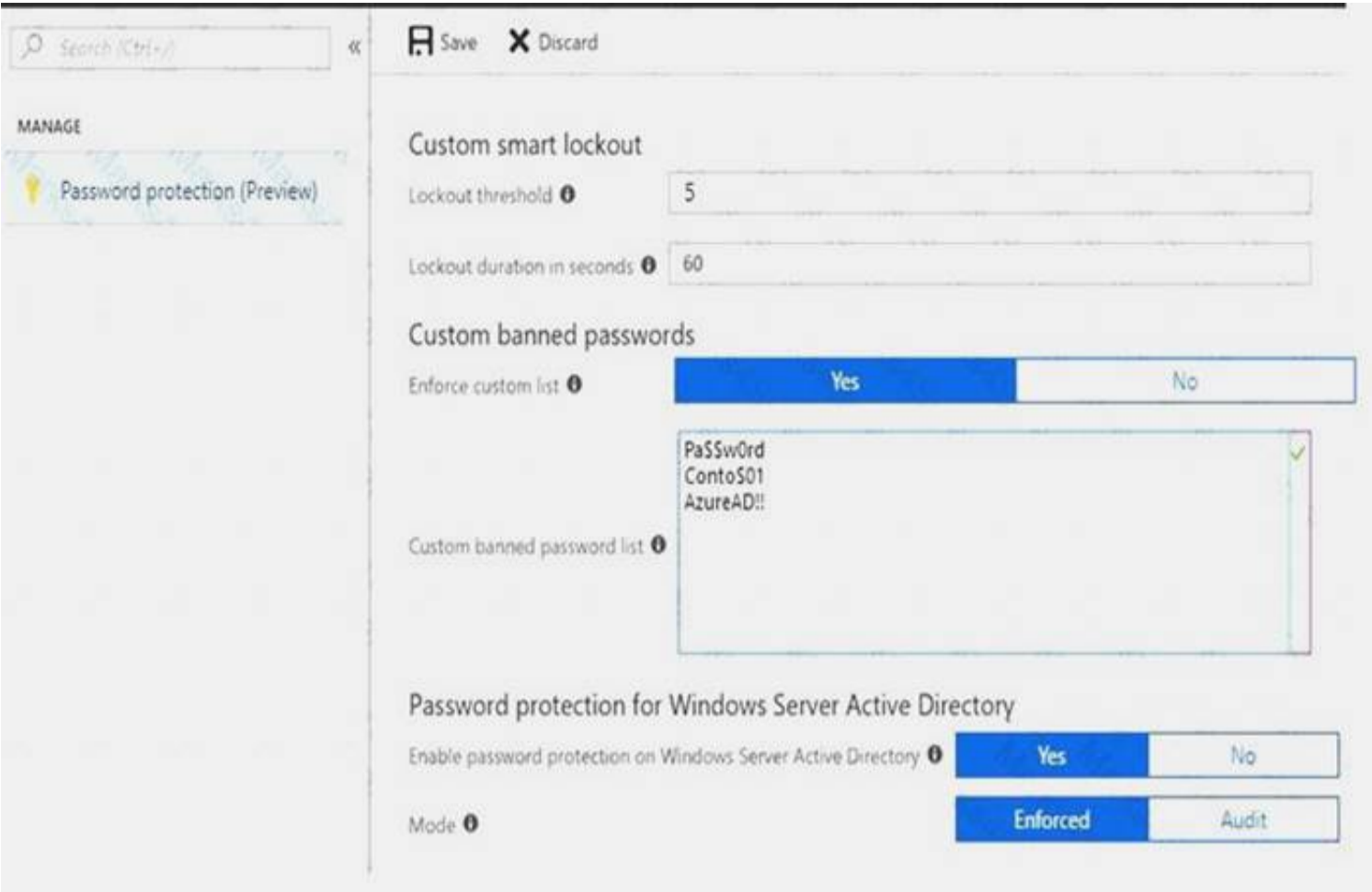
Answer: C

NEW QUESTION 30

- (Exam Topic 1)

You have a Microsoft 365 Enterprise subscription.

You create a password policy as shown in the following exhibit.



Use the drop-down menus to select the answer choice that completes each statement based on the information presented in the graphic.
NOTE: Each correct selection is worth one point.

If users are locked out of their account, they have [answer choice].

five sign-in attempts each subsequent minute

one sign-in attempt each subsequent minute

five sign-in attempts every five minutes

one sign-in attempt every five minutes

Users can create a password of [answer choice].

Password11

ContoS01Pa\$\$word

AzureAD!!111

pa\$\$w0rd

- A. Mastered
- B. Not Mastered

Answer: A

Explanation:
References:
<https://docs.microsoft.com/en-us/azure/active-directory/authentication/concept-password-ban-bad>

NEW QUESTION 34

- (Exam Topic 1)
Your Network contains an on-premises Active Directory domain named contoso.local. The domain contains five domain controllers.
Your company purchases Microsoft 365 and creates a Microsoft Anne Active Directory (Azure AD) tenant named .contoso.onmicrosoft.com.
You plan to implement pass- through authentication.
You need to prepare the environment for the planned implementation of pass-through authentication. Which three actions should you perform? Each correct answer presents pan of the solution.
NOTE: Each correct selection is worth one point.

- A. Modify the email address attribute for each user account.
- B. From the Azure portal, add a custom domain name.
- C. From Active Directory Domains and Trusts, add a UPN suffix.
- D. Modify the User logon name for each user account.
- E. From the Azure portal, configure an authentication method.
- F. From a domain controller, install an authentication Agent.

Answer: BCD

NEW QUESTION 38

- (Exam Topic 1)
You have a Microsoft 365 subscription.

A new corporate security policy states that you must automatically send DLP incident reports to the users in the legal department. You need to schedule the email delivery of the reports. The solution must ensure that the reports are sent as frequently as possible. How frequently can you share the reports?

- A. hourly
- B. monthly
- C. weekly
- D. daily

Answer: C

NEW QUESTION 43

- (Exam Topic 1)

You have a Microsoft 365 Enterprise subscription.

You have a conditional access policy to force multi factor authentication when accessing Microsoft SharePoint from a mobile device

You need to view which users authenticated by using multi factor authentication. What should you do?

- A. From the Microsoft 365 admin center, view the Security Compliance reports.
- B. From the Azure Active Directory admin center, view the user sign-ins.
- C. From the Microsoft 365 admin center, view the Usage reports.
- D. From the Azure Active Directory admin center, view the audit logs.

Answer: B

Explanation:

References:

<https://docs.microsoft.com/en-us/azure/active-directory/authentication/howto-mfa-reporting>

NEW QUESTION 45

- (Exam Topic 1)

Your network contains an Active Directory domain named .Ki.ituin.com that is synced to Microsoft Azure Active Directory (Azure AD).

The domain contains 100 user accounts.

The city attribute for all the users is set to the city where the user resides.

You need to modify the value of the city attribute to the three letter airport code of each city. What should you do?

- A. from Active Directory Administrative Center, select the Active Directory users, and then modify the Property settings.
- B. From the Microsoft 365 admin center, select the users, and then use the Bulk actions option.
- C. From Azure Cloud Shell, run the Get-AzureADUsers, and then use the Bulk actions option.
- D. From Azure Cloud Shell, run the Get-AzureADUser and set-AzureADUser cmdlets.
- E. From Windows PowerShell on a domain controller, run the Get-AzureADUser and Set-AzureADUser cmdlets.

Answer: A

NEW QUESTION 49

- (Exam Topic 1)

Note: This question is part of a series of questions that present the same scenario. Each question in the series contains a unique solution that might meet the stated goals. Some question sets might have more than one correct solution, while others might not have a correct solution.

After you answer a question in this section, you will NOT be able to return to it. As a result, these questions will not appear in the review screen.

Your company has a Microsoft Office 365 tenant.

You suspect that several Office 365 features were recently updated.

You need to view a list of the features that were recently updated in the tenant. Solution: You use Dashboard in Security & Compliance.

Does this meet the goal?

- A. Yes
- B. NO

Answer: B

NEW QUESTION 50

- (Exam Topic 1)

Your company has on-premises servers and a Microsoft Azure Active Directory (Azure AD) tenant. Several months ago, the Azure AD Connect Health agent was installed on all the servers.

You review the health status of all the servers regularly.

Recently, you attempted to view the health status of a server named Server1 and discovered that the server is NOT listed on the Azure Active Directory Connect Servers list.

You suspect that another administrator removed Server1 from the list. You need to ensure that you can view the health status of Server1.

What are two possible ways to achieve the goal? Each correct answer presents a complete solution. NOTE: Each correct selection is worth one point.

- A. From Windows PowerShell, run the Register-AzureADConnectHealthSyncAgent cmdlet.
- B. From Azure Cloud shell, run the Connect-AzureAD cmdlet.
- C. From Server1, change the Azure AD Connect Health services Startup type to Automatic (Delayed Start).
- D. From Server1, change the Azure AD Connect Health services Startup type to Automatic.
- E. From Server1, reinstall the Azure AD Connect Health agent.

Answer: AE

NEW QUESTION 53

- (Exam Topic 1)

Your company has a Microsoft 365 subscription.

Your plan to add 100 newly hired temporary users to the subscription next week. You create the user accounts for the new users.

You need to assign licenses to the new users. Which command should you run?

- ```
A. $NewStaff = Get-AzureADUser -All -Department "Temp" -UsageLocation "";
 $NewStaff | foreach {Set-AzureADUser -LicenseOptions "contoso:ENTERPRISEPACK"}

B. $NewStaff = Get-AzureADUser -All -Department "Temp" -UsageLocation "US" -UnlicensedUsersOnly;
 $NewStaff | foreach {Set-AzureADUserLicense -AddLicenses "contoso:ENTERPRISEPACK"}

C. $NewStaff = Get-AzureADUser -All -Department "Temp" -UsageLocation "";
 $NewStaff | foreach {Set-AzureADUserLicense -LicenseOptions "contoso:ENTERPRISEPACK"}

D. $NewStaff = Get-AzureADUser -All -Department "Temp" -UsageLocation "US" -UnlicensedUsersOnly;
 $NewStaff | foreach {Set-AzureADUser -AddLicenses "contoso:ENTERPRISEPACK"}
```

- A. Option A
- B. Option B
- C. Option C
- D. Option D

**Answer:** B

#### NEW QUESTION 56

- (Exam Topic 2)

You need to meet the security requirement for the vendors. What should you do?

- A. From the Azure portal, add an identity provider.
- B. From Azure Cloud Shell, run the New-AzureADUser cmdlet and specify the –UserPrincipalName parameter.
- C. From the Azure portal, create guest accounts.
- D. From Azure Cloud Shell, run the New-AzureADUser cmdlet and specify the –UserType parameter.

**Answer:** C

#### NEW QUESTION 60

- (Exam Topic 2)

You need to meet the security requirement for Group1. What should you do?

- A. Configure all users to sign in by using multi-factor authentication.
- B. Modify the properties of Group1.
- C. Assign Group1 a management role.
- D. Modify the Password reset properties of the Azure AD tenant.

**Answer:** D

#### Explanation:

References:

<https://docs.microsoft.com/en-us/azure/active-directory/authentication/concept-sspr-howitworks>

#### NEW QUESTION 65

- (Exam Topic 2)

Note: This question is part of a series of questions that present the same scenario. Each question in the series contains a unique solution that might meet the stated goals- Some question sets might have more than one correct solution, while others might not have a correct solution.

After you answer a question in this section, you will NOT be able to return to it. As a result, these questions will not appear in the review screen.

You need to assign User2 the required roles to meet the security requirement.

Solution: From the Office 365 admin center, you assign User2 the Records Management role. From the Exchange 365 center, you assign User2 the Help Desk role.

Does that meet the goal?

- A. Yes
- B. NO

**Answer:** B

#### NEW QUESTION 69

- (Exam Topic 3)

You need to ensure that all the sales department users can authenticate successfully during Project1 and Project2.

Which authentication strategy should you implement for the pilot projects?

- A. password hash synchronization and seamless SSO
- B. pass-through authentication
- C. password hash synchronization
- D. pass-through authentication and seamless SSO

**Answer:** A

**Explanation:**

References:

<https://docs.microsoft.com/en-us/azure/security/azure-ad-choose-authn>

**NEW QUESTION 73**

- (Exam Topic 3)

Which role should you assign to User1?

- A. Security Administrator
- B. Records Management
- C. Security Reader
- D. Hygiene Management

**Answer: C**

**NEW QUESTION 78**

- (Exam Topic 3)

You are evaluating the required processes for Project1.

You need to recommend which DNS record must be created before you begin the project. Which DNS record should you recommend?

- A. mail exchanger (MX)
- B. alias (CNAME)
- C. host (A)
- D. host (AAA)

**Answer: A**

**NEW QUESTION 82**

.....

## Thank You for Trying Our Product

### We offer two products:

1st - We have Practice Tests Software with Actual Exam Questions

2nd - Questions and Answers in PDF Format

### MS-100 Practice Exam Features:

- \* MS-100 Questions and Answers Updated Frequently
- \* MS-100 Practice Questions Verified by Expert Senior Certified Staff
- \* MS-100 Most Realistic Questions that Guarantee you a Pass on Your FirstTry
- \* MS-100 Practice Test Questions in Multiple Choice Formats and Updatesfor 1 Year

**100% Actual & Verified — Instant Download, Please Click**  
**[Order The MS-100 Practice Test Here](#)**