

# Cisco

## Exam Questions 300-420

Designing Cisco Enterprise Networks (ENSLD)



#### NEW QUESTION 1

An engineer is working for a large cable TV provider that requires multiple sources streaming video on different channels using multicast with no rendezvous point. Which multicast protocol meets these requirements?

- A. PIM-SM
- B. PIM-SSM
- C. any-source multicast
- D. BIDIR-PIM

**Answer: D**

#### NEW QUESTION 2

When vEdge router redundancy is designed, which FHRP is supported?

- A. HSRP
- B. OMP
- C. GLBP
- D. VRRP

**Answer: D**

#### NEW QUESTION 3

Which OSPF area blocks LSA Type 3, 4 and 5, but allows a default summary route?

- A. normal
- B. stub
- C. NSSA
- D. totally stubby

**Answer: D**

#### NEW QUESTION 4

What is a benefit of using VRRPv3 as compared to VRRPv2?

- A. VRRPv3 supports IPv4 and IPv6
- B. VRRPv3 supports authentication
- C. VRRPv3 supports preemption
- D. VRRPv3 supports stateful switchover

**Answer: A**

#### NEW QUESTION 5

What is one function of the vSmart controller in an SD-WAN deployment?

- A. orchestrates vEdge and cEdge connectivity
- B. responsible for the centralized control plane of the SD-WAN network
- C. provides centralized network management and a GUI to monitor and operate the SD-WAN overlay
- D. provides a data-plane at branch offices to pass traffic through the SD-WAN network

**Answer: B**

#### NEW QUESTION 6

Which QoS feature responds to network congestion by dropping lower priority packets?

- A. CBWFQ
- B. tail drop
- C. WRED
- D. strict priority

**Answer: C**

#### NEW QUESTION 7

An engineer must design a multicast network for a financial application. Most of the multicast sources also receive multicast traffic (many-to-many deployment model). To better scale routing tables, the design must not use source trees. Which multicast protocol satisfies these requirements?

- A. PIM-SSM
- B. PIM-SM
- C. MSDP
- D. BIDIR-PIM

**Answer: B**

#### NEW QUESTION 8

A network engineer must connect two sites across a public network using a secure tunneling technology that supports multicast traffic. Which technology must be chosen?

- A. IPsec
- B. GRE
- C. PPTP
- D. GRE over IPsec

**Answer:** D

**NEW QUESTION 9**

Which nonproprietary mechanism can be used to automate rendezvous point distribution in a large PIM domain?

- A. Embedded RP
- B. BSR
- C. Auto-RP
- D. Static RP

**Answer:** B

**NEW QUESTION 10**

Which method will filter routes between EIGRP neighbors within the same autonomous system?

- A. distribute-list
- B. policy-based routing
- C. leak-map
- D. route tagging

**Answer:** A

**NEW QUESTION 10**

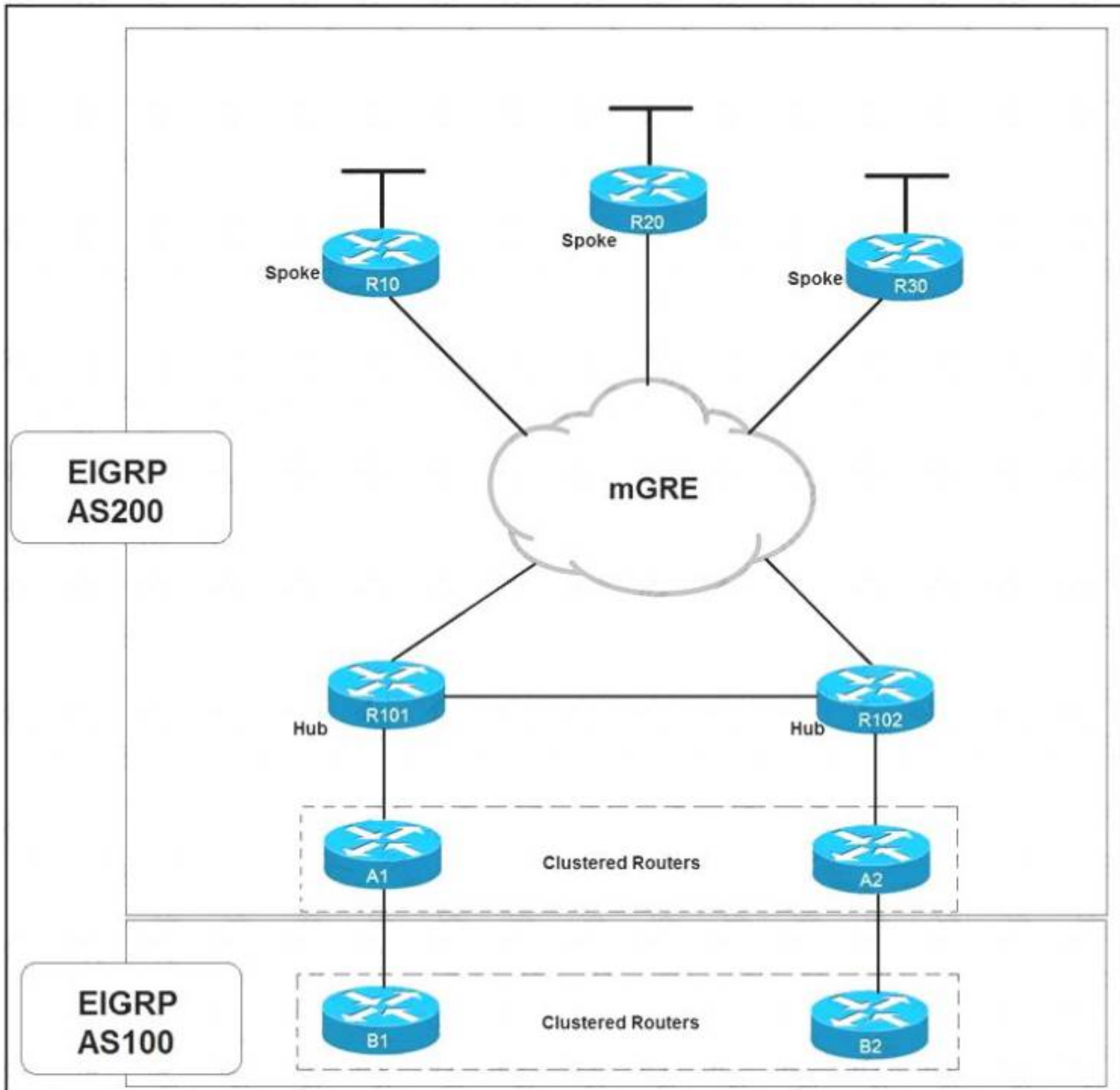
When designing interdomain multicast, which two protocols are deployed to achieve communication between multicast sources and receivers? (Choose two.)

- A. IGMPv2
- B. BIDIR-PIM
- C. MP-BGP
- D. MSDP
- E. MLD

**Answer:** CD

**NEW QUESTION 14**

Refer to the exhibit.



Which solution decreases the EIGRP convergence time?

- A. Enable subsecond timers
- B. Increase the hold time value
- C. Increase the dead timer value
- D. Enable stub routing on the spokes

**Answer: D**

#### NEW QUESTION 19

Which feature must be incorporated into the campus LAN design to enable Wake on LAN?

- A. dynamic ARP Inspection Snooping on layer 2 devices
- B. directed broadcasts on layer 3 devices
- C. proxy ARP on layer 3 devices
- D. DHCP Snooping on layer 2 devices

**Answer: B**

#### NEW QUESTION 24

When a network is designed using IS-IS protocol, which two circuit types are supported? (Choose two.)

- A. nonbroadcast multiaccess
- B. multiaccess
- C. point-to-multipoint
- D. nonbroadcast
- E. point-to-point

**Answer: BE**

#### NEW QUESTION 25

Which two steps can be taken to improve convergence in an OSPF network? (Choose two.)

- A. Use Bidirectional Forwarding Detection
- B. Merge all the areas into one backbone area

- C. Tune OSPF parameters
- D. Make all non-backbone areas stub areas
- E. Span the same IP network across multiple areas.

**Answer:** CD

#### NEW QUESTION 27

An engineer must design a VPN solution for a company that has multiple branches connecting to a main office. What are two advantages of using DMVPN instead of IPsec tunnels to accomplish this task? (Choose two.)

- A. support for AES 256-bit encryption
- B. greater scalability
- C. support for anycast gateway
- D. lower traffic overhead
- E. dynamic spoke-to-spoke tunnels

**Answer:** BE

#### NEW QUESTION 30

Which feature is required for graceful restart to recover from a processor failure?

- A. Cisco Express Forwarding
- B. Virtual Switch System
- C. Stateful Switchover
- D. Bidirectional Forwarding Detection

**Answer:** A

#### NEW QUESTION 33

What is the purpose of an edge node in an SD-Access network fabric?

- A. Edge nodes identify and authenticate endpoints and register endpoint information with control plane nodes.
- B. Edge nodes track endpoint IDs to location mappings, along with IPv4, IPv6, or MAC addresses.
- C. Edge nodes are the gateway between the fabric domain and network outside of the fabric.
- D. Edge nodes resolve lookup requests from edge and border nodes to locate destination endpoint IDs.

**Answer:** A

#### NEW QUESTION 38

A company with multiple service providers wants to speed up BGP convergence time in the event a failure occurs with their primary link. Which approach achieves this goal and does not impact router CPU utilization?

- A. Utilize BFD and tune the multiplier to 50
- B. Lower the BGP hello interval
- C. Decrease the BGP keepalive timer
- D. Utilize BFD and keep the default BGP timers

**Answer:** C

#### NEW QUESTION 40

When IPsec VPNs are designed, what is a unique requirement if support for IP Multicast is required?

- A. encapsulation of traffic with GRE or VTI
- B. IPsec forwarding using transport mode
- C. additional bandwidth for headend
- D. IPsec forwarding using tunnel mode

**Answer:** A

#### NEW QUESTION 42

An infrastructure team is concerned about the shared memory utilization of a device, and for this reason, they need to monitor the device state. Which solution limits impact on the device and provides the required data?

- A. IPFIX
- B. static telemetry
- C. on-change subscription
- D. periodic subscription

**Answer:** A

#### NEW QUESTION 43

Which design consideration must be made when using IPv6 overlay tunnels?

- A. Overlay tunnels that connect isolated IPv6 networks can be considered a final IPv6 network architecture.
- B. Overlay tunnels should only be considered as a transition technique toward a permanent solution.

- C. Overlay tunnels can be configured only between border devices and require only the IPv6 protocol stack.
- D. Overlay tunneling encapsulates IPv4 packets in IPv6 packets for delivery across an IPv6 infrastructure.

**Answer:** C

**NEW QUESTION 45**

Which two BGP features will result in successful route exchanges between eBGP neighbors sharing the same AS number? (Choose two.)

- A. advertise-best-external
- B. bestpath as-path ignore
- C. client-to-client reflection
- D. as-override
- E. allow-as-in

**Answer:** DE

**NEW QUESTION 50**

A network solution is being designed for a company that connects to multiple Internet service providers. Which Cisco proprietary BGP path attribute will influence outbound traffic flow?

- A. Local Preference
- B. MED
- C. Weight
- D. AS Path
- E. Community

**Answer:** C

**NEW QUESTION 52**

An organization is designing a detailed QoS plan that limits bandwidth to specific rates. Which two parameters are supported by the traffic policing feature? (Choose two.)

- A. violating
- B. marking
- C. shaping
- D. bursting
- E. conforming

**Answer:** BC

**NEW QUESTION 57**

An engineer is designing an enterprise campus network. The LAN infrastructure consists of switches from multiple vendors, and Spanning Tree must be used as a Layer 2 loop prevention mechanism. All configured VLANs must be grouped in two STP instances. Which standards-based Spanning Tree technology supports this design solution?

- A. MSTP
- B. RSTP
- C. Rapid PVST
- D. STP

**Answer:** A

**NEW QUESTION 60**

.....

## Thank You for Trying Our Product

### We offer two products:

1st - We have Practice Tests Software with Actual Exam Questions

2nd - Questions and Answers in PDF Format

### 300-420 Practice Exam Features:

- \* 300-420 Questions and Answers Updated Frequently
- \* 300-420 Practice Questions Verified by Expert Senior Certified Staff
- \* 300-420 Most Realistic Questions that Guarantee you a Pass on Your First Try
- \* 300-420 Practice Test Questions in Multiple Choice Formats and Updates for 1 Year

**100% Actual & Verified — Instant Download, Please Click**  
**[Order The 300-420 Practice Test Here](#)**