



Cisco

Exam Questions 350-901

Developing Applications using Cisco Core Platforms & APIs

About ExamBible

[Your Partner of IT Exam](#)

Found in 1998

ExamBible is a company specialized on providing high quality IT exam practice study materials, especially Cisco CCNA, CCDA, CCNP, CCIE, Checkpoint CCSE, CompTIA A+, Network+ certification practice exams and so on. We guarantee that the candidates will not only pass any IT exam at the first attempt but also get profound understanding about the certificates they have got. There are so many alike companies in this industry, however, ExamBible has its unique advantages that other companies could not achieve.

Our Advances

* 99.9% Uptime

All examinations will be up to date.

* 24/7 Quality Support

We will provide service round the clock.

* 100% Pass Rate

Our guarantee that you will pass the exam.

* Unique Gurantee

If you do not pass the exam at the first time, we will not only arrange FULL REFUND for you, but also provide you another exam of your claim, ABSOLUTELY FREE!

NEW QUESTION 1

Which two statements are considered best practices according to the 12-factor app methodology for application design? (Choose two.)

- A. Application code writes its event stream to stdout.
- B. Application log streams are archived in multiple replicated databases.
- C. Application log streams are sent to log indexing and analysis systems.
- D. Application code writes its event stream to specific log files.
- E. Log files are aggregated into a single file on individual nodes.

Answer: AD

NEW QUESTION 2

An organization manages a large cloud-deployed application that employs a microservices architecture. No notable issues occur with downtime because the services of this application are redundantly deployed over three or more data center regions. However, several times a week reports are received about application slowness. The container orchestration logs show faults in a variety of containers that cause them to fail and then spin up brand new. Which action must be taken to improve the resiliency design of the application while maintaining current scale?

- A. Update the base image of the containers.
- B. Test the execution of the application with another cloud services platform.
- C. Increase the number of containers running per service.
- D. Add consistent “try/catch(exception)” clauses to the code.

Answer: D

NEW QUESTION 3

An organization manages a large cloud-deployed application that employs a microservices architecture across multiple data centers. Reports have received about application slowness. The container orchestration logs show that faults have been raised in a variety of containers that caused them to fail and then spin up brand new instances.

Which two actions can improve the design of the application to identify the faults? (Choose two.)

- A. Automatically pull out the container that fails the most over a time period.
- B. Implement a tagging methodology that follows the application execution from service to service.
- C. Add logging on exception and provide immediate notification.
- D. Do a write to the datastore every time there is an application failure.
- E. Implement an SNMP logging system with alerts in case a network link is slow.

Answer: BC

NEW QUESTION 4

DRAG DROP

Drag and drop the characteristics from the left onto the correct data processing techniques on the right, in the context of GDPR.

Select and Place:

Answer Area

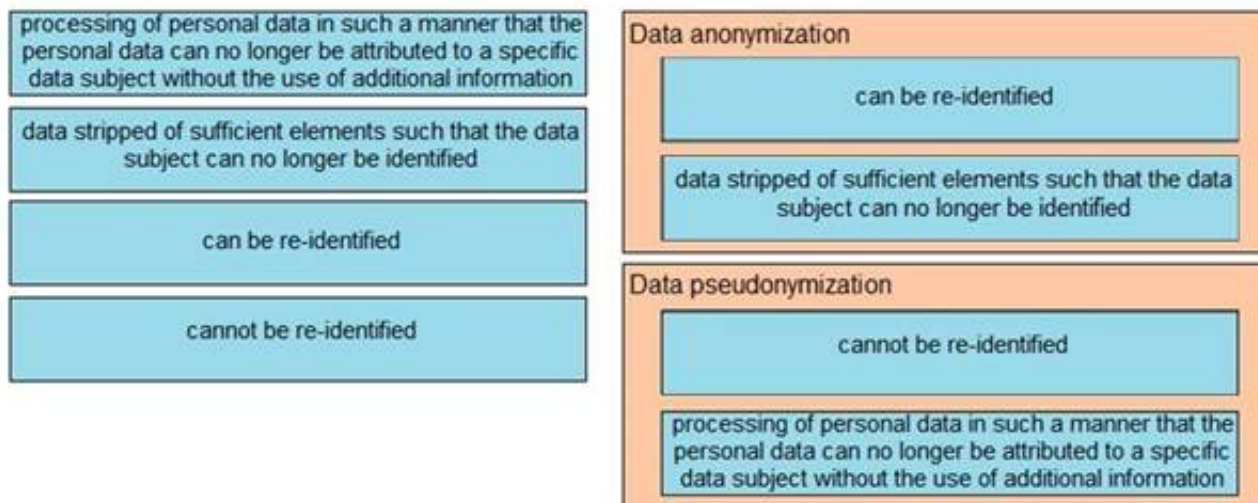
processing of personal data in such a manner that the personal data can no longer be attributed to a specific data subject without the use of additional information	Data anonymization
data stripped of sufficient elements such that the data subject can no longer be identified	
can be re-identified	
cannot be re-identified	Data pseudonymization

- A. Mastered
- B. Not Mastered

Answer: A

Explanation:

Answer Area



NEW QUESTION 5

Refer to the exhibit. The cURL POST request creates an OAuth access token for authentication with FDM API requests. What is the purpose of the file “@token_data” that cURL is handling?

- A. This file is a container to log possible error responses in the request.
- B. This file is given as input to store the access token received from FDM.
- C. This file is used to send authentication related headers.
- D. This file contains raw data that is needed for token authentication.

Answer: B

NEW QUESTION 6

```
import request
import json

meraki_api_key = "<api key>"
url =
"https://api.meraki.com/api/v0/organizations/1234567890/devices"
headers = {
    "X-Cisco-Meraki-API-Key": meraki_api_key,
}
params = {
    "perPage": 3
}
res = requests.get(url, headers=headers, params=params)
formatted_message = ""
Meraki Dashboard API Response
-----
Response Status Code : {}
Response Link Header : {}
Response Body : {}
-----
"".format(res.status_code, res.headers.get('Link'),
json.dumps(res.json(), indent=4))
print(formatted_message)
```

<https://n6.meraki.com/api/v0/organizations/1234567890/devices?perPage=3&startingAfter=0000-0000-0000>; rel=first,
 <https://n6.meraki.com/api/v0/organizations/1234567890/devices?perPage=3&startingAfter=Q2EK-3UBE-RRUY>; rel=next,
 <https://n6.meraki.com/api/v0/organizations/1234567890/devices?endingBefore=zzzz-zzzz-zzzz&perPage=3>; rel=last

Refer to the exhibit. Which line of code must be added to this code snippet to allow an application to pull the next set of paginated items?

- A. requests.get(url, links=['next']['url'])
- B. requests.get(url, headers=links['next']['url'])
- C. requests.get(res.links['next']['url'], headers=headers)
- D. requests.get(res.headers.get('Link')['next']['url'], headers=headers)

Answer: C

NEW QUESTION 7

The UCS Python SDK includes modules for Service Profile template creation. Which two UCS Service Profile template types are supported? (Choose two.)

- A. initial-template
- B. updating-template
- C. abstract-template
- D. attached-template
- E. base-template

Answer: AB

NEW QUESTION 8

Click on the GET Resource button above to view resources that will help with this question.

An engineer is managing a DC with 6000 Cisco UCS servers installed and running. The engineer has been asked to identify all resources where the model is in the UCSB family and the available memory is less than or equal to 5 GB.

Which REST API call accomplishes this task?

- A. GET/api/v1/compute/RackUnits?\$select=Vendor,Model,Serial&\$filter=not(Model eq 'UCSC') and AvailableMemory le 5000
- B. GET/api/v1/compute/RackUnits?\$select=Vendor,Model,Serial&\$filter=Model eq 'UCSB' and AvailableMemory lt 5000
- C. GET/api/v1/compute/RackUnits?\$select=Vendor,Model,Serial&\$filter=contains(Model, UCSB) and AvailableMemory lt 5000
- D. GET/api/v1/compute/RackUnits?\$select=Vendor,Model,Serial&\$filter=contains(Model, UCSB) and AvailableMemory le 5000

Answer: D

NEW QUESTION 9

AppGigabitEthernet interface is used as data port for a container on a Cisco Catalyst 9000 Series Switch. Which two interface configuration options should be used? (Choose two.)

- A. trunk interface
- B. bridged virtual interface
- C. SPAN port
- D. management interface
- E. subinterface

Answer: AC

NEW QUESTION 10

On a Cisco Catalyst 9300 Series Switch, the guest shell is being used to create a service within a container. Which change is needed to allow the service to have external access?

- A. Apply ip nat overload on VirtualPortGroup0.
- B. Apply ip nat inside on Interface VirtualPortGroup0.
- C. Apply ip nat outside on Interface VirtualPortGroup0.
- D. Apply ip nat inside on Interface GigabitEthernet1.

Answer: B

NEW QUESTION 10

```
headers = ( _____ )
try:
    response = requests.get("https://sandboxnac.cisco.com/dna/intent/api/v1/wireless/profile",
        headers=headers, verify=False)
except requests.exceptions.RequestException as error:
    print("Error processing request", error)
    sys.exit(1)
```

Refer to the exhibit. Which code snippet is required in the headers to successfully authorize wireless information from Cisco DNA Center?

- A. headers = {'X-auth-token': 'fa8426a0-8eaf-4d22-8e13-7c1b16a9370c'} B.headers = {'Authorization': 'Basic YWRtaW46R3JhcGV2aW5IMQ=='}
- B. headers = {'Authorization': 'Bearer ASDNFALKJER23412RKDALSNKF'}
- C. headers = {'Content-type': 'application/json'}

Answer: A

NEW QUESTION 11

While developing an application following the 12-factor app methodology, which approach should be used in the application for logging?

- A. Write a log to a file in the application directory.
- B. Write a log to a file in /var/log.
- C. Write the logs buffered to stdout.
- D. Write the logs unbuffered to stdout.

Answer: D

NEW QUESTION 12

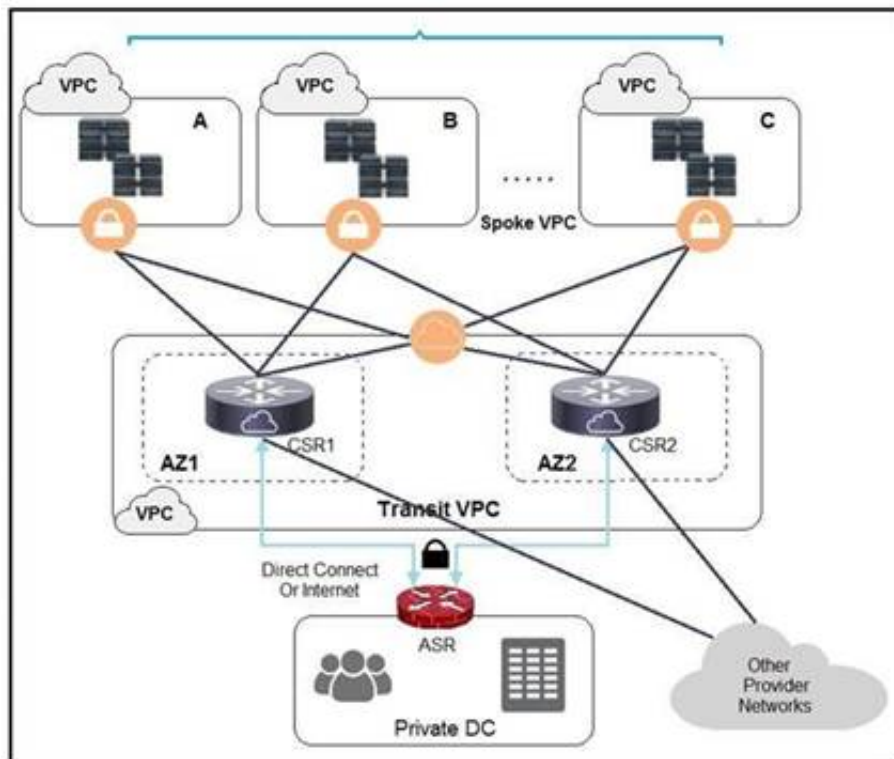
An application has initiated an OAuth authorization code grant flow to get access to an API resource on behalf of an end user.

Which two parameters are specified in the HTTP request coming back to the application as the end user grants access? (Choose two.)

- A. access token and a refresh token with respective expiration times to access the API resource
- B. access token and expiration time to access the API resource
- C. redirect URI a panel that shows the list of permissions to grant
- D. code that can be exchanged for an access token
- E. state can be used for correlation and security checks

Answer: AB

NEW QUESTION 14



Refer to the exhibit. A company has extended networking from the data center to the cloud through Transit VPC. Which two statements describe the benefits of this approach? (Choose two.)

- A. Dynamic routing combined with multi-AZ- deployment creates a robust network infrastructure.
- B. VPC virtual gateways provide highly available connections to virtual networks.
- C. Dedicated VPC simplifies load balancing by combining internal and external web services.
- D. VPC virtual gateways provide more secure connections to virtual networks.
- E. Dedicated VPC simplifies routing by not combining this service with other shared services.

Answer: BD

NEW QUESTION 15

A developer has just completed the configuration of an API that connects sensitive internal systems. Based on company policies, the security of the data is a high priority. Which approach must be taken to secure API keys and passwords?

- A. Embed them directly in the code.
- B. Store them in a hidden file.
- C. Store them inside the source tree of the application.
- D. Change them periodically.

Answer: D

NEW QUESTION 17

The response from a server includes the header ETag: W/"7eb8b94419e371767916ef13e0d6e63d". Which statement is true?

- A. The ETag has a Strong validator directive.
- B. The ETag has a Weak validator directive, which is an optional directive.
- C. The ETag has a Weak validator directive, which is a mandatory directive.
- D. The ETag has a Strong validator directive, which it is incorrectly formatted.

Answer: B

NEW QUESTION 20

```
name: VRFs
ios_vrf:
  vrf: "{{ local_vrf }}"
  state: present
  purge: yes
```

Refer to the exhibit. The YAML represented is using the ios_vrf module. As part of the Ansible playbook workflow, what is the result when this task is run?

- A. VRFs not defined in the host_vars file are removed from the device.
- B. VRFs not defined in the host_vars file are added to the device, and any other VRFs on the device remain.
- C. VRFs defined in the host_vars file are removed from the device.
- D. VRFs are added to the device from the host_vars file, and any other VRFs on the device are removed.

Answer: D

NEW QUESTION 25

```
- name: Configure Interfaces
  with_items: "{{interfaces}}"
  netconf_config:
    <<: *host_info
    xml: |
      <config>
        <interfaces xmlns="urn:ietf:params:xml:ns:yang:ietf-interfaces">
          <interface>
            <name>{{item.interface_type}}{{item.interface_id}}</name>
            <description>{{item.description}}</description>
            <type xmlns:ianaift="urn:ietf:params:xml:ns:yang:iana-if-type">ianaift:ethernetCsmacd</type>
            <enabled>true</enabled>
            <ipv4 xmlns="urn:ietf:params:xml:ns:yang:ietf-ip">
              <address>
                <ip>{{item.ip_address}}</ip>
                <netmask>{{item.subnet_mask}}</netmask>
              </address>
            </ipv4>
          </interface>
        </interfaces>
      </config>
```

Refer to the exhibit. As part of the Ansible playbook workflow, several new interfaces are being configured using the netconf_config module. The task references the interface variables that are unique per device. In which directory is the YAML file with these variables found?

- A. host_vars directory
- B. home directory
- C. group_vars directory
- D. current working directory

Answer: A

NEW QUESTION 27

Application sometimes store configuration as constants in the code, which is a violation of strict separation of configuration from code. Where should application configuration be stored?

- A. environment variables
- B. YAML files
- C. Python libraries
- D. Dockerfiles
- E. INI files

Answer: B

NEW QUESTION 32

.....

Relate Links

100% Pass Your 350-901 Exam with ExamBible Prep Materials

<https://www.exambible.com/350-901-exam/>

Contact us

We are proud of our high-quality customer service, which serves you around the clock 24/7.

Viste - <https://www.exambible.com/>