

Cisco

Exam Questions 300-430

Implementing Cisco Enterprise Wireless Networks (ENWLSI)



NEW QUESTION 1

An engineer configures the wireless LAN controller to perform 802.1x user authentication. Which configuration must be enabled to ensure that client devices can connect to the wireless, even when WLC cannot communicate with the RADIUS?

- A. pre-authentication
- B. local EAP
- C. authentication caching
- D. Cisco Centralized Key Management

Answer: B

NEW QUESTION 2

Which feature on the Cisco Wireless LAN Controller must be present to support dynamic VLAN mapping?

- A. FlexConnect ACL
- B. VLAN name override
- C. CCKM/OKC
- D. AAA override

Answer: D

NEW QUESTION 3

An engineer must use Cisco AVC on a Cisco WLC to prioritize Cisco IP cameras that use the wireless network. Which element do you configure in a rule?

- A. permit-ACL
- B. WMM required
- C. mark
- D. rate-limit

Answer: C

NEW QUESTION 4

Which command set configures a Cisco Catalyst 9800 Series Wireless Controller so that the client traffic enters the network at the AP switch port?

A.

```
config terminal
wireless profile policy [policy name]
local switching
end
```

B.

```
config terminal
wireless flexconnect policy [policy name]
local switching
end
```

A.

```
config terminal
wireless flexconnect policy [policy name]
no central switching
end
```

B.

```
config terminal
wireless profile policy [policy name]
no central switching
end
```

Answer: B

NEW QUESTION 5

A new MSE with wIPS service has been installed and no alarm information appears to be reaching the MSE from controllers. Which protocol must be allowed to reach the MSE from the controllers?

- A. SOAP/XML
- B. NMSP
- C. CAPWAP
- D. SNMP

Answer: A

NEW QUESTION 6

Which devices can be tracked with the Cisco Context Aware Services?

- A. wired and wireless devices
- B. wireless devices
- C. wired devices
- D. Cisco certified wireless devices

Answer: A

Explanation:

Reference: <https://www.cisco.com/c/en/us/support/docs/wireless/context-aware-software/110836-cas-faq.html>

NEW QUESTION 7

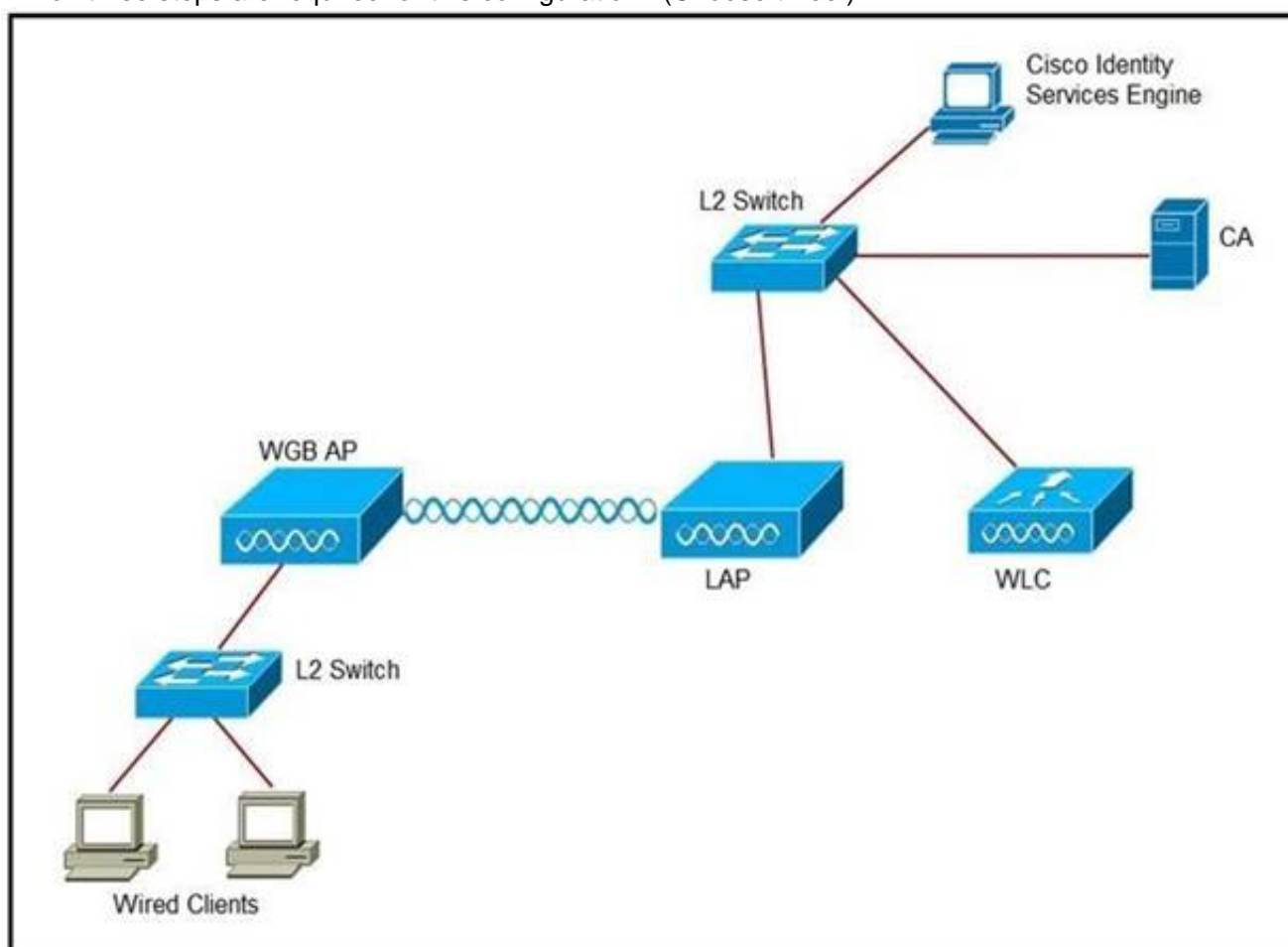
All APs are receiving multicast traffic, instead of only the APs that need it. What is the cause of this problem?

- A. The multicast group includes all APs
- B. The wrong multicast address was used
- C. The multicast group is assigned the wrong VLAN
- D. Multicast IGMP snooping is not enabled

Answer: D

NEW QUESTION 8

Refer to the exhibit. An engineer must connect a fork lift via a WGB to a wireless network and must authenticate the WGB certificate against the RADIUS server. Which three steps are required for this configuration? (Choose three.)



- A. Configure the certificate, WLAN, and radio interface on WGB.
- B. Configure the certificate on the WLC.
- C. Configure WLAN to authenticate using ISE.
- D. Configure the access point with the root certificate from ISE.
- E. Configure WGB as a network device in ISE.
- F. Configure a policy on ISE to allow devices to connect that validate the certificate.

Answer: ACF

NEW QUESTION 9

On a branch office deployment, it has been noted that if the FlexConnect AP is in standalone mode and loses connection to the WLC, all clients are disconnected, and the SSID is no longer advertised. Considering that FlexConnect local switching is enabled, which setting is causing this behavior?

- A. ISE NAC is enabled
- B. 802.11r Fast Transition is enabled
- C. Client Exclusion is enabled
- D. FlexConnect Local Auth is disabled

Answer: D

NEW QUESTION 10

When using a Cisco Catalyst 9800 Series Wireless Controller, which statement about AutoQoS is true?

- A. It has a set of predefined profiles that you cannot modify further
- B. It matches traffic and assigns each matched packet to QoS groups
- C. It automates deployment of wired QoS and makes wireless QoS implementation easier
- D. It allows the output policy map to put specific QoS queues into specific subgroups

Answer: B

NEW QUESTION 10

An engineer configures a Cisco Aironet 600 Series OfficeExtend AP for a user who works remotely. What is configured on the Cisco WLC to allow the user to print a printer on his home network?

- A. split tunneling
- B. SE-connect
- C. FlexConnect
- D. AP failover priority

Answer: A

Explanation:

Reference: <https://www.cisco.com/c/en/us/support/docs/wireless/aironet-602-officeextend-access-point/117540-configure-splittunneloeap-00.html>

NEW QUESTION 11

A customer is experiencing performance issues with its wireless network and asks a wireless engineer to provide information about all sources of interference and their impacts to the wireless network over the past few days. Where can the requested information be accessed?

- A. CleanAir reports on Cisco Prime Infrastructure
- B. Performance reports on Cisco Prime Infrastructure
- C. Interference Devices reports on Cisco Wireless LAN Controller
- D. Air Quality reports on Cisco Wireless LAN Controller

Answer: A

NEW QUESTION 15

Refer to the exhibit.

No.	Time	Source	Destination	Protocol	Length	Info
1	0.000000	10.48.39.251	10.48.71.21	UDP	162	9999 → 2003 Len=120
2	0.003747	10.48.39.251	10.48.71.21	UDP	146	9999 → 2003 Len=104
3	1.087479	10.48.39.214	10.48.71.21	UDP	130	9999 → 2003 Len=88
4	2.733577	10.48.39.214	10.48.71.21	UDP	130	9999 → 2003 Len=88
5	2.999859	10.48.39.251	10.48.71.21	UDP	178	9999 → 2003 Len=136
6	3.001227	10.48.39.251	10.48.71.21	UDP	162	9999 → 2003 Len=120
7	4.355249	10.48.39.214	10.48.71.21	UDP	146	9999 → 2003 Len=104
8	5.999538	10.48.39.251	10.48.71.21	UDP	178	9999 → 2003 Len=136
9	6.000959	10.48.39.251	10.48.71.21	UDP	146	9999 → 2003 Len=104
10	8.999418	10.48.39.251	10.48.71.21	UDP	146	9999 → 2003 Len=104
11	9.000791	10.48.39.251	10.48.71.21	UDP	178	9999 → 2003 Len=136
12	9.262904	10.48.39.214	10.48.71.21	UDP	146	9999 → 2003 Len=104
13	10.894785	10.48.39.214	10.48.71.21	UDP	130	9999 → 2003 Len=88
14	11.995126	10.48.39.251	10.48.71.21	UDP	194	9999 → 2003 Len=152
15	11.999193	10.48.39.251	10.48.71.21	UDP	162	9999 → 2003 Len=120
16	14.994902	10.48.39.251	10.48.71.21	UDP	178	9999 → 2003 Len=136
17	14.996368	10.48.39.251	10.48.71.21	UDP	162	9999 → 2003 Len=120
18	17.994857	10.48.39.251	10.48.71.21	UDP	146	9999 → 2003 Len=104
19	17.996231	10.48.39.251	10.48.71.21	UDP	162	9999 → 2003 Len=120
20	18.102843	10.48.39.251	10.48.71.21	UDP	130	9999 → 2003 Len=88
21	21.098408	10.48.39.251	10.48.71.21	UDP	146	9999 → 2003 Len=104
22	21.099952	10.48.39.251	10.48.71.21	UDP	162	9999 → 2003 Len=120
23	24.098574	10.48.39.251	10.48.71.21	UDP	146	9999 → 2003 Len=104
24	24.099804	10.48.39.251	10.48.71.21	UDP	162	9999 → 2003 Len=120
25	27.098099	10.48.39.251	10.48.71.21	UDP	162	9999 → 2003 Len=120
26	27.099839	10.48.39.251	10.48.71.21	UDP	130	9999 → 2003 Len=88
27	28.880307	10.48.39.164	10.48.71.21	UDP	146	9999 → 2003 Len=104
28	28.881569	10.48.39.214	10.48.71.21	CAPP	146	CAPP MD5 Encrypted
29	30.094237	10.48.39.251	10.48.71.21	UDP	178	9999 → 2003 Len=136
30	30.097812	10.48.39.251	10.48.71.21	UDP	146	9999 → 2003 Len=104
31	30.513451	10.48.39.214	10.48.71.21	UDP	130	9999 → 2003 Len=88
32	30.515926	10.48.39.164	10.48.71.21	UDP	130	9999 → 2003 Len=88

> Frame 1: 162 bytes on wire (1296 bits), 162 bytes captured (1296 bits)
 > Ethernet II, Src: CiscInc_2a:c4:a3 (00:06:f6:2a:c4:a3), Dst: Vmware_99:4e:19 (00:50:56:99:4e:19)
 > Internet Protocol Version 4, Src: 10.48.39.251, Dst: 10.48.71.21
 > User Datagram Protocol, Src Port: 9999 (9999), Dst Port: 2003 (2003)
 v Data (120 bytes)
 Data: ae 2f 44 f0 00 00 b4 5f ef 06 fd cb b7 6c 03 c7 ...
 [Length: 120]

The image shows a packet capture that was taken at the CLI of the Cisco CMX server. It shows UDP traffic from the WLC coming into the server. What does the capture prove?

- A. The Cisco CMX server receives NetFlow data from the WLC.
- B. The Cisco CMX server receives NMSP traffic from the WLC.
- C. The Cisco CMX server receives SNMP traffic from the WLC.
- D. The Cisco CMX server receives Angle-of-Arrival data from the WLC.

Answer: D

NEW QUESTION 16

CMX Facebook Wi-Fi allows access to the network before authentication. Which two elements are available? (Choose two.)

- A. Allow HTTP traffic only before authentication and block all the traffic.
- B. Allow all the traffic before authentication and intercept HTTPS only.
- C. Allow HTTPs traffic only before authentication and block all other traffic.
- D. Allow all the traffic before authentication and intercept HTTP only.
- E. Allow SNMP traffic only before authentication and block all the traffic.

Answer: CD

Explanation:

Reference: https://www.cisco.com/c/en/us/td/docs/wireless/mse/8-0/CMX_Connect_Engage_Visitor_Connect/Guide/Cisco_CMX_Connect_Engage_Config_Guide_VC/CMX_Facebook_Wi-Fi.html

NEW QUESTION 17

Which AP model of the Cisco Aironet Active Sensor is used with Cisco DNA Center?

- A. 1800s

- B. 3600e
- C. 3800s
- D. 4800i

Answer: A

NEW QUESTION 22

Which three characteristics of a rogue AP pose a high security risk? (Choose three.)

- A. open authentication
- B. high RSSI
- C. foreign SSID
- D. accepts clients
- E. low RSSI
- F. distant location

Answer: ACD

NEW QUESTION 23

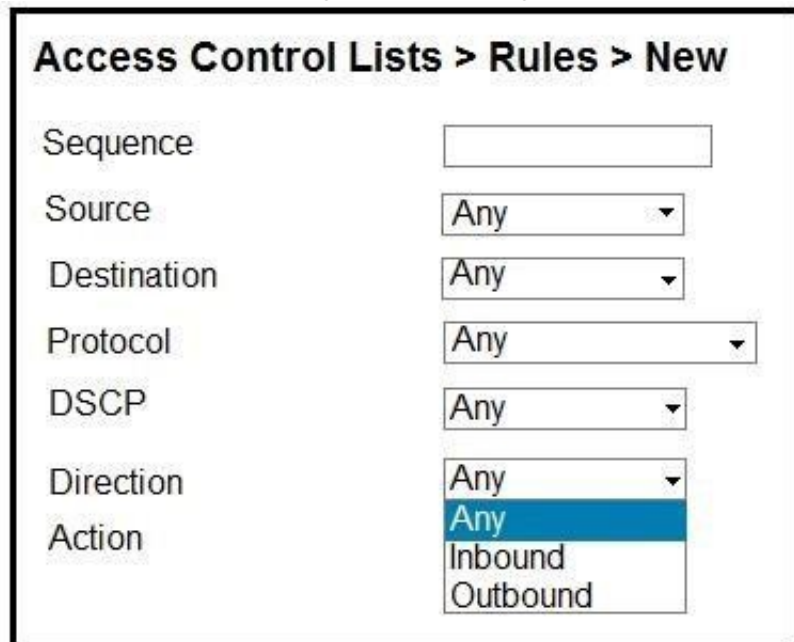
An engineer must configure a Cisco WLC to support Cisco Aironet 600 Series OfficeExtend APs. Which two Layer 2 security options are supported in this environment? (Choose two.)

- A. Static WEP + 802.1X
- B. WPA+WPA2
- C. Static WEP
- D. CKIP
- E. 802.1X

Answer: BC

NEW QUESTION 27

Refer to the exhibit. An engineer is creating an ACL to restrict some traffic to the WLC CPU. Which selection must be made from the direction drop-down list?



- A. It must be Inbound because traffic goes to the WLC.
- B. Packet direction has no significance; it is always Any.
- C. It must be Outbound because it is traffic that is generated from the WLC.
- D. To have the complete list of options, the CPU ACL must be created only by the CLI.

Answer: A

NEW QUESTION 30

What is an important consideration when implementing a dual SSID design for BYOD?

- A. After using the provisioning SSID, an ACL that used to make the client switch SSIDs forces the user to associate and traverse the network by MAC filtering.
- B. If multiple WLCs are used, the WLAN IDs must be exact for the clients to be provisioned and traverse the network correctly.
- C. SSIDs for this setup must be configured with NAC State-RADIUS NAC for the clients to authenticate with Cisco ISE, or with NAC State-ISE NAC for Cisco ISE to associate the client.
- D. One SSID is for provisioning and the other SSID is for gaining access to the network
- E. The use of an ACL should not be enforced to make the client connect to the REAL SSID after provisioning.

Answer: D

NEW QUESTION 34

A Cisco WLC has been added to the network and Cisco ISE as a network device, but authentication is failing. Which configuration within the network device configuration should be verified?

- A. SNMP RO community
- B. device interface credentials

- C. device ID
- D. shared secret

Answer: D

NEW QUESTION 36

Where is a Cisco OEAP enabled on a Cisco Catalyst 9800 Series Wireless Controller?

- A. RF Profile
- B. Flex Profile
- C. Policy Profile
- D. AP Join ProfileCorrect

Answer: B

Explanation:

Reference: https://www.cisco.com/c/en/us/td/docs/wireless/controller/9800/config-guide/b_wl_16_10_cg/flexconnect.html

NEW QUESTION 39

.....

Thank You for Trying Our Product

We offer two products:

1st - We have Practice Tests Software with Actual Exam Questions

2nd - Questions and Answers in PDF Format

300-430 Practice Exam Features:

- * 300-430 Questions and Answers Updated Frequently
- * 300-430 Practice Questions Verified by Expert Senior Certified Staff
- * 300-430 Most Realistic Questions that Guarantee you a Pass on Your First Try
- * 300-430 Practice Test Questions in Multiple Choice Formats and Updates for 1 Year

100% Actual & Verified — Instant Download, Please Click
[Order The 300-430 Practice Test Here](#)