

Microsoft

Exam Questions 70-740

Installation, Storage, and Compute with Windows Server 2016



NEW QUESTION 1

You have a server that runs Windows Server 2016 Standard.

You create a new three-way mirror storage space. You format the storage space by using ReFS.

Which two features can you use on the new storage space? Each correct answer presents a complete solution.

- A. file and folder permissions
- B. disk quotas
- C. Encrypting File System (EFS)
- D. long file names
- E. Data Deduplication

Answer: AE

NEW QUESTION 2

You have two Hyper V hosts named Server1 and Server2 that run Windows Server 2012 R2. The servers are nodes in a failover cluster named Cluster1.

You perform a rolling upgrade of the cluster nodes to Windows Server 2016.

You need to ensure that you can implement the Virtual Machine Load Balancing feature. Which cmdlet should you use?

- A. Update-ClusterNetWorkNameResource
- B. Set-GusterGroupSet
- C. Update-ClusterFunctionalLevel
- D. Set-CauClosterRole

Answer: C

Explanation:

<https://docs.microsoft.com/en-us/windows-server/failover-clustering/cluster-operating-system-rollingupgrade#cluster-os-rolling-upgrade-process>

NEW QUESTION 3

You plan to deploy three servers that will run Windows Server 2016. The servers will be configured as shown in the following table.

Server name	Hard disk configuration
Server1	Disk1: 250-GB, NTFS-formatted Disk2: 4-TB, ReFS-formatted
Server2	Disk1: 1-TB, NTFS-formatted Disk2: 2-TB, NTFS-formatted Disk3: 500-GB, exFAT-formatted
Server3	Disk1: 8-TB, NTFS-formatted Disk2: 2-TB, ReFS-formatted Disk3: 1-TB, ReFS-formatted

You need to ensure that you can use all of the available space on each disk. What is one of the disks that you must initialize as a GPT disk?

- A. Disk2 on Server3
- B. Disk1 on Server2
- C. Disk3 on Server2
- D. Disk1 on Sever3

Answer: D

NEW QUESTION 4

You have a server named Server1 that runs Windows Server 2016. Windows Defender is enabled on Server1.

Server1 runs an application named App1 that stores various types of files in Microsoft OneDrive for Business, MicrosoftOneDrive, and Microsoft SharePoint Online. App1 also interacts with several local services.

You need to prevent Windows Defender from scanning any files opened by App1. What should you do on Server1?

- A. From the Windows Defender settings, configure a file exclusion.
- B. Run the New-CiPolicy cmdlet.
- C. Modify the real-time protection settings in Windows Defender.
- D. From the Windows Defender settings, configure a process exclusion.

Answer: A

NEW QUESTION 5

DRAG DROP

Your network contains an Active Directory domain named adatum.com. The domain contains four member servers that run Windows Server 2016.

On each server, you locally attach three disks and install the Failover Clustering feature. You need to create a volume that uses all the disks. The volume must be highly available.

Which three cmdlets should you run in sequence? To answer, move the appropriate cmdlets from the list of cmdlets to the answer area and arrange them in the correct order.

Cmdlets

Answer Area

New-Cluster

Initialize-Disk

Enable-VMReplication

Enable-ClusterS2D

New-Volume

New-Partition



- A. Mastered
- B. Not Mastered

Answer: A

Explanation:

Answer Area

New-Cluster

Enable-ClusterS2D

New-Volume



NEW QUESTION 6

You have a Hyper-V server named Server1 that runs Windows Server 2012 R2. Server1 hosts a virtual machine named VM1 that runs Windows Server 2016. VM1 connects to an external virtual switch named Switch1. You can ping VM1 from Server1. You upgrade Server1 to Windows Server 2016. You need to ensure that you can connect to VM1 by using PowerShell Direct. What should you do?

- A. Configure the firewall rules on Server1.
- B. Enable the Hyper-V extensible switch extensions on Server1.
- C. Upgrade the configuration version of VM1.
- D. Configure the firewall rules on VM1.

Answer: C

NEW QUESTION 7

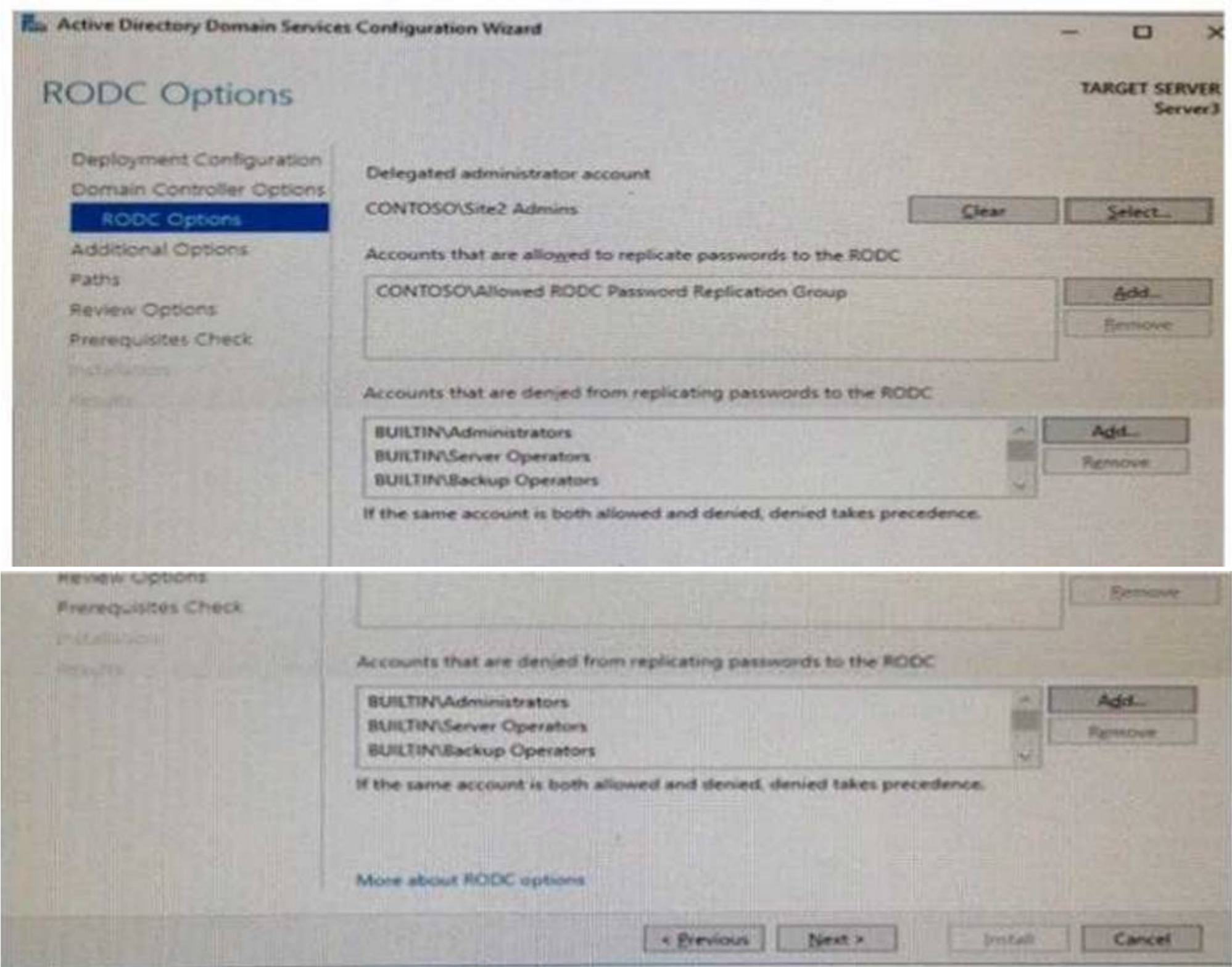
You have a Nano Server named Nano1. Nano1 is configured to perform real-time protection scans by using Windows Defender. You need to ensure that all of the files located in D:\App1\Data are excluded from the real-time protection scans. What should you do?

- A. From the properties of D:\App1\Data folder, modify the permissions.
- B. Run the Set-MpPreference cmdlet and specify the –ExclusionPath parameter.
- C. From a command prompt, run the attrib command and specify the –s parameter.
- D. Run the Get-ChildItem cmdlet and specify the –Exclude parameter.

Answer: B

NEW QUESTION 8

HOTSPOT
Your network contains an Active Directory forest. The forest contains two sites named Site1 and Site2. Site1 contains 10 domain controllers. Site1 and Site2 connect to each other by using a WAN link. You run the Active Directory Domain Services Configuration Wizard as shown in the following graphic.



Server3 is the only server in Site2

Use the drop-down menus to select the answer choice that completes each statement based on the information graphic.

Members of the Site2 Admins group will be able to [answer choice] on Server 3.

make updates to SYSVOL content
 manage the password replication policy
 stop and start Active Directory Domain Services (AD DS)

If the WAN link fails, users who are members of the Allowed RODC Password Replication Group [answer choice] in Site2.

will be prevented from logging on
 will log on with reduced security rights
 can log on if they have previously logged on

- A. Mastered
- B. Not Mastered

Answer: A

Explanation:

Members of the Site2 Admins group will be able to [answer choice] on Server 3.

make updates to SYSVOL content
manage the password replication policy
stop and start Active Directory Domain Services (AD DS)

If the WAN link fails, users who are members of the Allowed RODC Password Replication Group [answer choice] in Site2.

will be prevented from logging on
will log on with reduced security rights
can log on if they have previously logged on

NEW QUESTION 9

You deploy a Hyper-V server named Served in an isolated test environment The test environment is prevented from accessing the Internet Server1 runs the Datacenter edition of Windows Server 2016. You plan to deploy the following guest virtual machines on the server

Quantity	Operating system	Domain member
10	Windows Server 2012 R2	Yes
4	Windows Server 2016	No
5	Windows Server 2016	Yes

Which activation model should you use for the virtual machines'?

- A. Multiple Activation Key (MAK)
- B. Automatic Virtual Machine Activation (AVMA)
- C. Original Equipment Manufacturer (OEM) key
- D. Key Management Service (KMS)

Answer: B

NEW QUESTION 10

HOTSPOT

Your network contains an Active Directory domain named contoso.com. The domain contains a DNS server named Server1

You enable Response Rate Limiting on Server1.

You need to prevent Response Rate Limiting from applying to hosts that reside on the network of 10.0.0.0/24.

Which cmdlets should you run? To answer, select the appropriate options in the answer area

First cmdlet to run:

Add-DnsServerClientSubnet
Enable-DnsServerPolicy
Set-DnsServerResponseRateLimiting
Set-DnsServerResponseRateLimitingExceptionlist

Second cmdlet to run:

Add- DnsServerResponseRateLimitingExceptionlist
Add-DnsServerQueryResolutionPolicy
Add-DnsServerZoneScope
Set-DnsServerDsSetting

- A. Mastered
- B. Not Mastered

Answer: A

Explanation:

First cmdlet to run:

▼

Add-DnsServerClientSubnet
Enable-DnsServerPolicy
Set-DnsServerResponseRateLimiting
Set-DnsServerResponseRateLimitingExceptionlist

Second cmdlet to run:

▼

Add- DnsServerResponseRateLimitingExceptionlist
Add-DnsServerQueryResolutionPolicy
Add-DnsServerZoneScope
Set-DnsServerDsSetting

NEW QUESTION 10

DRAG DROP

You have a server named Server1 that runs Windows Server 2016.

You plan to deploy Internet Information Services (US) in a Windows container. You need to prepare Server1 for the planned deployment.

Which three actions should you perform in sequence? To answer, move the appropriate actions from the list of actions to the answer area and arrange them in the correct order

Actions

Install the Hyper-V server role.

Install the Base Container Images.

Install the Container feature.

Install the Web Server role.

Install Docker.

Answer Area

1.

2.

3.



- A. Mastered
- B. Not Mastered

Answer: A

Explanation:

Answer Area

1. Install the Container feature.
2. Install Docker.
3. Install the Base Container Images.

NEW QUESTION 11

Your network contains an Active Directory forest named contoso.com. The forest contains a member server named Server1 that runs Windows Server 2016. Server1 is located in the perimeter network. You install the Active Directory Federation Services server role on Server1. You create an Active Directory Federation Services (ADFS) farm by using a certificate that has a subject name of sts.contoso.com. You need to enable certificate authentication from the Internet on Server1. Which two inbound TCP ports should you open on the firewall? Each correct answer presents part of the solution.

- A. 389
- B. 443
- C. 3389
- D. 8531
- E. 49443

Answer: BE

NEW QUESTION 16

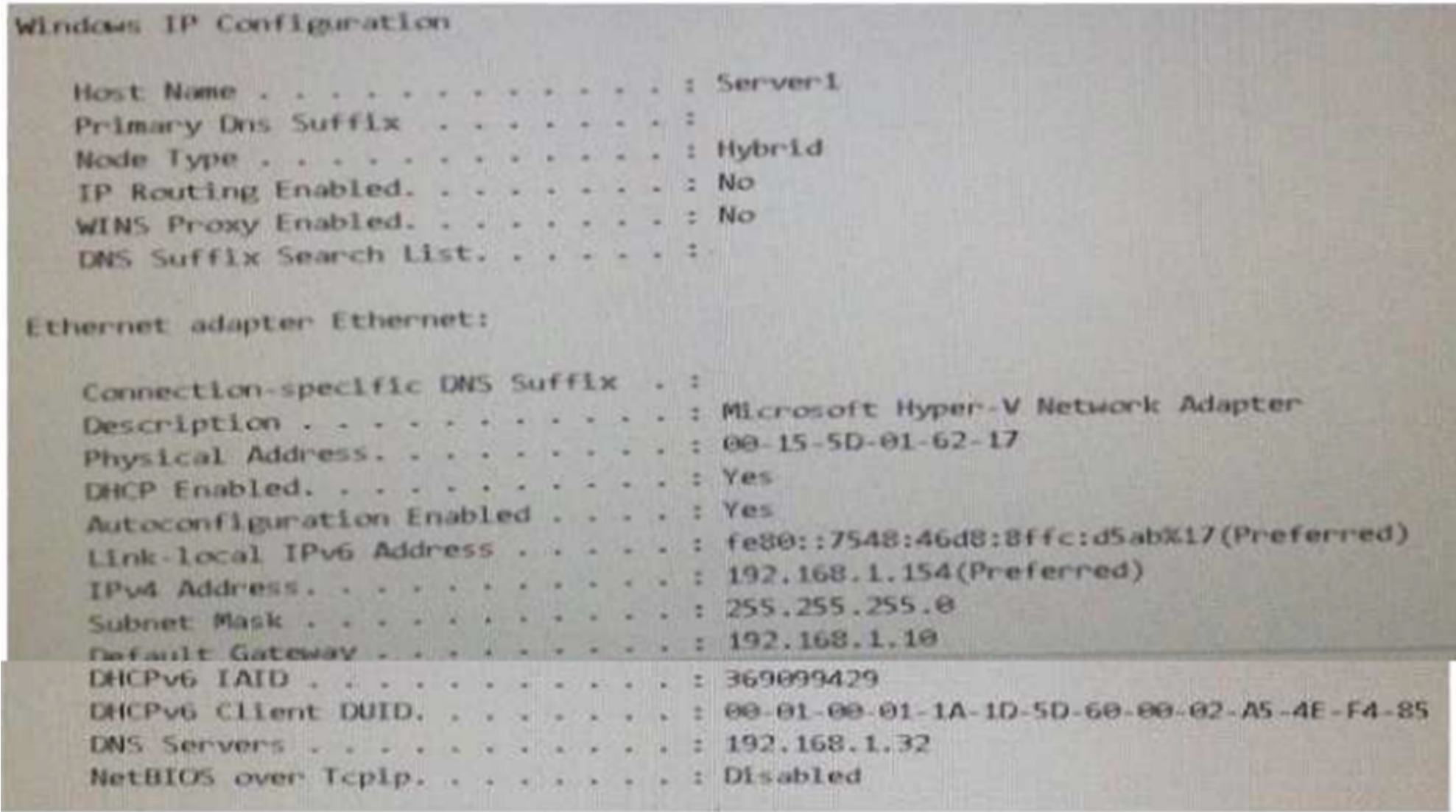
You have a failover cluster named Cluster1. A virtual machine named VM1 is a highly available virtual machine that runs on Cluster1. A custom application named App1 runs on VM1. You need to configure monitoring of VM1. If App1 adds an error entry to the Application event log, VM1 should be automatically rebooted and moved to another cluster node. Which tool should you use?

- A. Hyper-V Manager
- B. Failover Cluster Manager
- C. Server Manager
- D. Resource Monitor

Answer: B

NEW QUESTION 21

You are configuring a Windows Server 2016 failover cluster in a workgroup. Before installing one of the nodes, you run the `ipconfig /all` command and receive the following output:



You need to ensure that Server 1 can be added as a node in the cluster. What should you do?

- A. Assign a static IP address
- B. Change the Node Type to Broadcast
- C. Configure a DNS suffix
- D. Enable NetBIOS over TCP/IP

Answer: C

NEW QUESTION 24

DRAG DROP

You have a server named Server1 that runs Windows Server 2016.

You need to deploy the first node cluster of a Network Controller cluster.

Which four cmdlets should you run in sequence? To answer, move the appropriate cmdlets from the list of cmdlets to the answer area and arrange them in the correct order.

Actions

Install-WindowsFeature

New-NetworkControllerNodeObject

Enable-NetworkControllerNode

Install-NetworkController

Install-NetworkControllerCluster

Answer Area

1.

2.

>

3.

<

4.

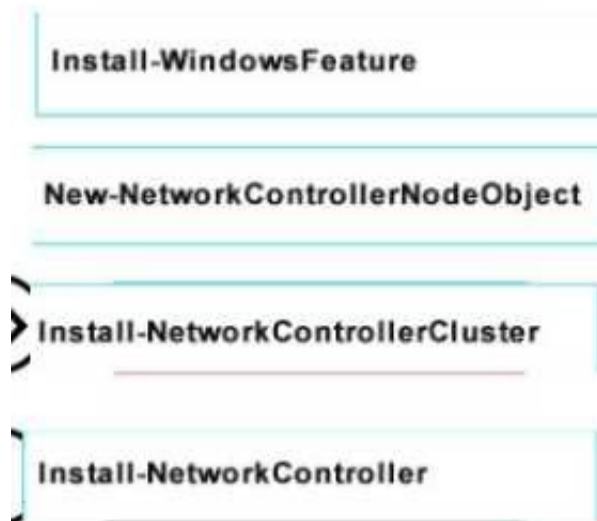
- A. Mastered
- B. Not Mastered

Answer: A

Explanation:

Passing Certification Exams Made Easy

visit - <https://www.surepassexam.com>



NEW QUESTION 28

You have an application named App1. App1 is distributed to multiple Hyper-V virtual machines in a multitenant environment. You need to ensure that the traffic is distributed evenly among the virtual machines that host App1. What should you include in the environment?

- A. Network Controller and Windows Server Network Load Balancing (NLB) nodes
- B. Network Controller and Windows Server Software Load Balancing (SLB) nodes
- C. an RAS Gateway and Windows Server Network Load Balancing (NLB) nodes
- D. an RAS Gateway and Windows Server Software Load Balancing (SLB) nodes

Answer: D

NEW QUESTION 33

Your company has 10 offices. Each office has a local network that contains several Hyper-V hosts that run Windows Server 2016. All of the offices are connected by high speed, low latency WAN links.

You need to ensure that you can use QoS policies for Live Migration traffic between the offices. Which component should you install?

- A. the Multipath I/O feature
- B. the Routing role service
- C. the Network Controller server role
- D. the Canary Network Diagnostics feature
- E. the Data Center Bridging feature

Answer: CE

NEW QUESTION 37

HOTSPOT

You have a server named Server1 that runs Windows Server 2016. Server1 is a Hyper-V host.

You have two network adapter cards on Server1 that are Remote Direct Memory Access (RDMA) - capable.

You need to aggregate the bandwidth of the network adapter cards for a virtual machine on Server1. The solution must ensure that the virtual machine can use the RDMA capabilities of the network adapter cards.

Which command should you run first? To answer, select the appropriate options in the answer area.



- A. Mastered
- B. Not Mastered

Answer: A

Explanation:

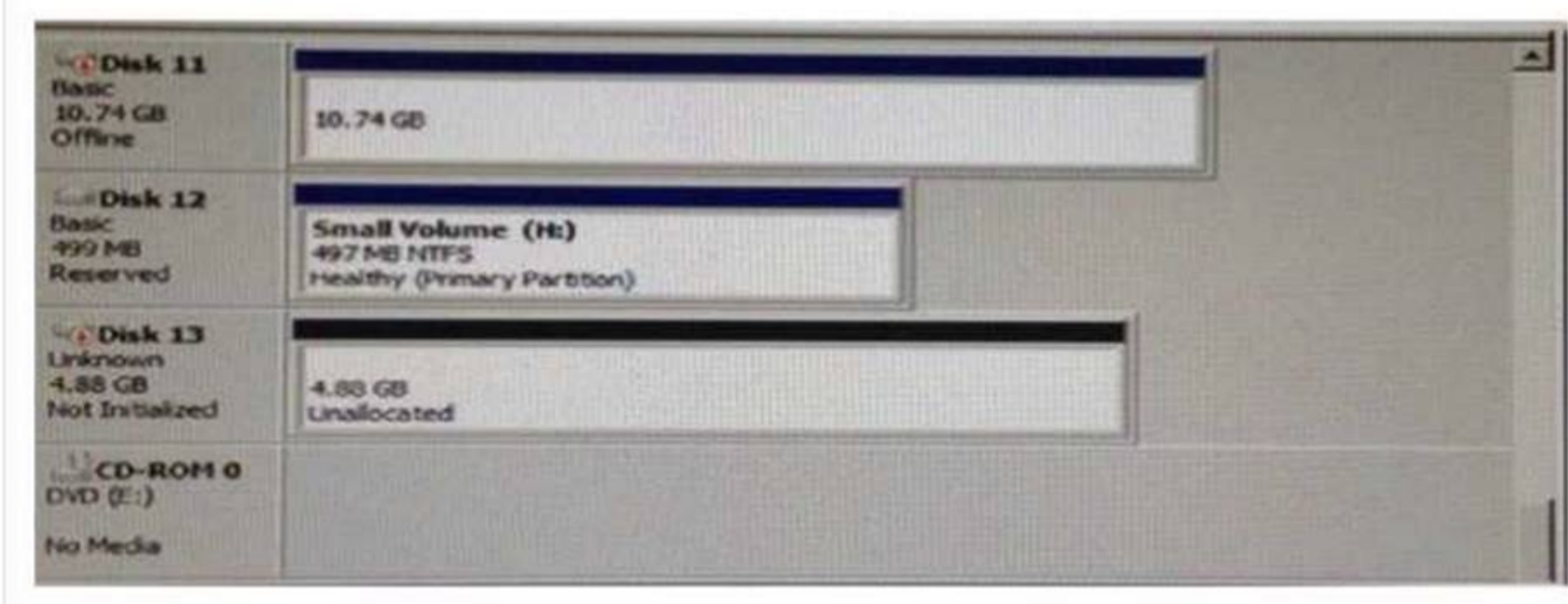


NEW QUESTION 41

HOTSPOT

You have a server named Server1 that runs Windows Server 2016 and has the Hyper-V server role installed. You open Disk Management on Server1 as shown in

the following graphic



You plan to configure Disk13 as a pass-through disk for a generation 1 virtual machine
Use the drop-down menus to select the answer choice that completes each statement based on the information presented in the graphic

The status of Disk 13 must be set to [answer choice.]

▼

Initializing
Offline
Online

If the virtual machine uses Disk 13 as the system partition, Disk 13 must be attached to [answer choice] in Hyper-V Manager.

▼

a Fibre Channel adapter
an IDE controller
a SCSI controller

- A. Mastered
- B. Not Mastered

Answer: A

Explanation:

The status of Disk 13 must be set to [answer choice.]

▼

Initializing
Offline
Online

If the virtual machine uses Disk 13 as the system partition, Disk 13 must be attached to [answer choice] in Hyper-V Manager.

▼

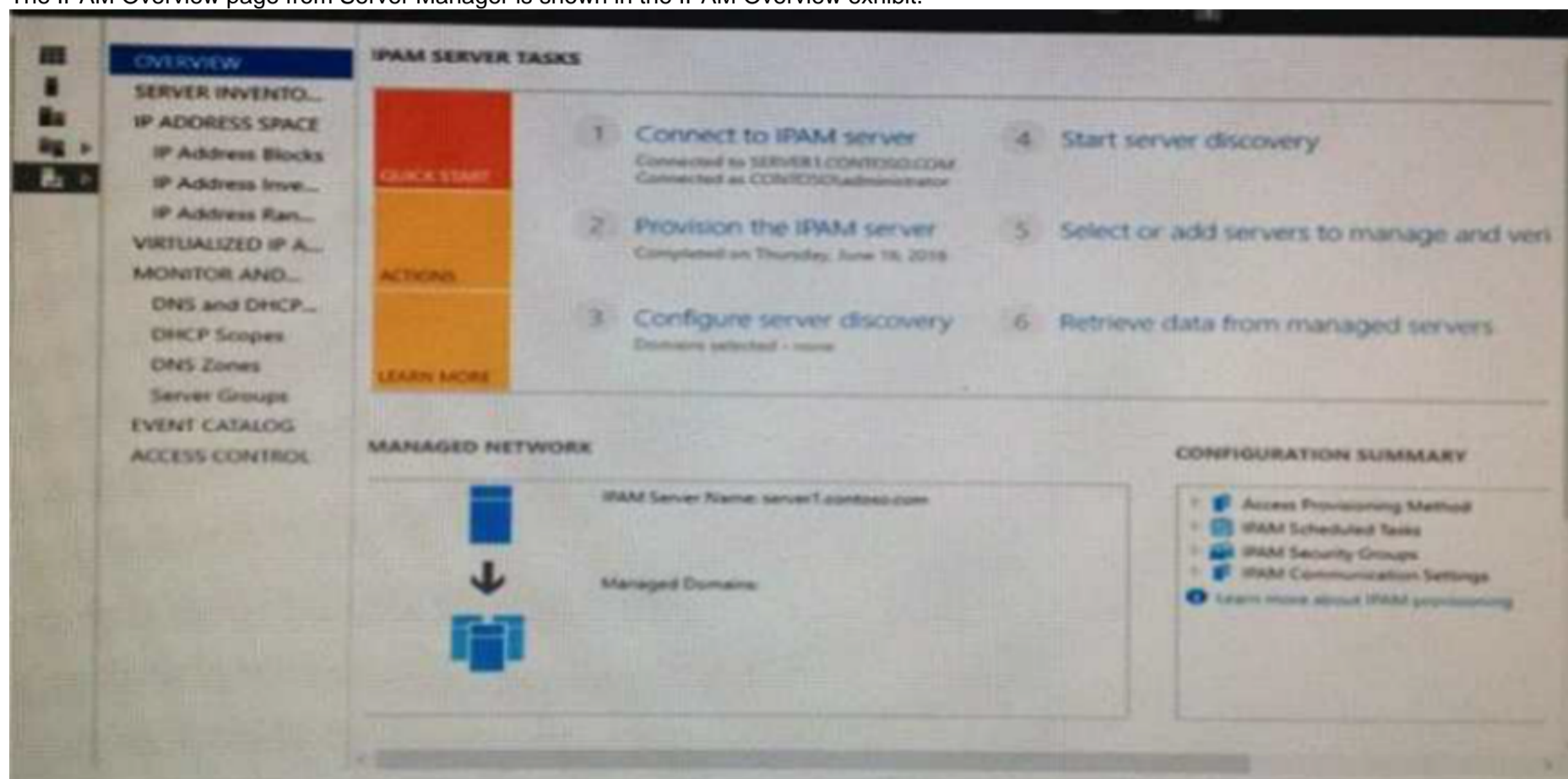
a Fibre Channel adapter
an IDE controller
a SCSI controller

NEW QUESTION 43
HOTSPOT

Your company has a testing environment that contains an Active Directory domain named contoso.com. The domain contains a server named Server1 that runs Windows Server 2016. Server1 has IP Address Management (IPAM) installed. IPAM has the following configuration.

Version : 6.3.0.1
 Port : 4885
 ProvisioningMethod : Automatic
 GpoPrefix : IPAM
 HMACKey : System.Security.SecureString

The IPAM Overview page from Server Manager is shown in the IPAM Overview exhibit.



The group policy configurations are shown in the GPO exhibit.



For each of the following statements, select Yes if the statement is true Otherwise, select No

Statements	Yes	No
If a DNS server is added to contoso.com, the server will be discovered by IPAM automatically.	<input type="radio"/>	<input type="radio"/>
If you manually add a DHCP server named Server3 to IPAM and set the Manageability status to Managed, the IPAM_DHCP Group Policy will apply to Server3.	<input type="radio"/>	<input type="radio"/>
If you click Start server discovery, the domain controllers in contoso.com will be discovered by IPAM.	<input type="radio"/>	<input type="radio"/>

Explanation:

Statements	Yes	No
If a DNS server is added to contoso.com, the server will be discovered by IPAM automatically.	<input type="radio"/>	<input checked="" type="radio"/>
If you manually add a DHCP server named Server3 to IPAM and set the Manageability status to Managed, the IPAM_DHCP Group Policy will apply to Server3.	<input checked="" type="radio"/>	<input type="radio"/>
If you click Start server discovery, the domain controllers in contoso.com will be discovered by IPAM.	<input type="radio"/>	<input checked="" type="radio"/>

NEW QUESTION 44

You need to ensure that VM1 and VM2 can communicate with each other only. The solution must prevent VM1 and VM2 from communicating with Server1. Which cmdlet should you use?

- A. Set-NetNeighbor
B. Remove-VMSSwitchTeamMember
C. Set-VMSSwitch
D. Enable-VMSSwitchExtension

Answer: C

NEW QUESTION 46

HOTSPOT

Your network contains an Active Directory domain named contoso.com. The domain contains a member server named Server1 that runs Windows Server 2016.

You install IP Address Management (IPAM) on Server1. You select the automatic provisioning method, and then you specify a prefix of IPAM!

You need to configure the environment for automatic IPAM provisioning.

Which cmdlet should you run? To answer, select the appropriate options in the answer area.

<div><div>▼</div><div>Add-IpamDiscoveryDomain Enable-IpamCapability Invoke-IpamGpoProvisioning Set-IpamConfiguration</div></div>	-Domain "Contoso.com"	<div><div>▼</div><div>-AssetTag -DisciverDns -GpoPrefixName -ProvisioningMethod</div></div>	"IPAM1"
--	-----------------------	---	---------

- A. Mastered
B. Not Mastered

Answer: A

Explanation:

The diagram illustrates the sequence of PowerShell commands for IPAM configuration. It consists of three main components:

- Left Panel:** A list of commands with a dropdown arrow at the top right. The commands are:
 - Add-IpamDiscoveryDomain
 - Enable-IpamCapability
 - Invoke-IpamGpoProvisioning (highlighted with a green box)
 - Set-IpamConfiguration
- Middle:** The text `-Domain "Contoso.com"`.
- Right Panel:** A list of parameters with a dropdown arrow at the top right. The parameters are:
 - AssetTag
 - DiscoverDns
 - GpoPrefixName (highlighted with a green box)
 - ProvisioningMethod

The green highlights indicate the specific command and parameter being focused on in the subsequent steps.

NEW QUESTION 47

Note: This question is part of a series of questions that use the same similar answer choices. An

Note: This question is part of a series of questions that use the same similar answer choices. An answer choice may be correct for more than one question in the series. Each question is independent of the other questions in this series. Information and details provided in a question apply only to that question.

You have three servers named Server1, Server2, and Server3 that run Windows Server 2016. Server1 and Server2 have the Hyper-V server role installed. Server3 has the iSCSI Target Server role service installed.

Server name	Components installed
Server1	Hyper-V server role
Server2	Hyper-V server role
Server3	iSCSI Target Server role service

You need to create a Hyper-V cluster Which tool should you use first?

- A. the clussvc.exe command
- B. the cluster.exe command
- C. the Computer Management console
- D. the configurehyperv.exe command
- E. the Disk Management console
- F. the Failover Cluster Manager console
- G. the Hyper-V Manager console
- H. the Server Manager Desktop app

Answer: H

NEW QUESTION 48

Note: This question is part of a series of questions that use the same similar answer choices An answer choice may be correct for more than one question in the series Each question is independent of the other questions in this series. Information and details provided in a question apply only to that question

You have a two-node Hyper-V cluster named Cluster1 at a primary location and a stand-alone Hyper- V host named Server1 at a secondary location

A virtual machine named VM1 runs on Cluster1 You configure a Hyper-V Replica of VM1 to Server1 You need to perform a Test Failover of VM1. Which tool should you use?

- A. the clussvc.exe command
- B. the cluster.exe command
- C. the Computer Management console
- D. the configurehyperv.exe command
- E. the Disk Management console
- F. the Failover Cluster Manager console
- G. the Hyper-V Manager console
- H. the Server Manager Desktop app

Answer: G

NEW QUESTION 53

Note: This question is part of a series of questions that use the same similar answer choices An answer choice may be correct for more than one question in the series Each question is independent of the other questions in this series. Information and details provided in a question apply only to that question

You have a Hyper-V host named Server1 that runs Windows Server 2016 You plan to deploy several shielded virtual machines on Server1

You deploy a Host Guardian on a new server

You need to ensure that Server1 can host shielded virtual machines. What should you run first?

- A. the Mount-VHD cmdlet
- B. the Diskpart command
- C. the Set-VHD cmdlet
- D. the Set-VM cmdlet
- E. the Set-VMHost cmdlet
- F. the Set-VMProcessor cmdlet
- G. the Install-WindowsFeature cmdlet
- H. the Optimize-VHD cmdlet

Answer: G

NEW QUESTION 58

In this section, you'll see one or more sets of questions with the same scenario and problem Each question presents a unique solution to the problem, and you must determine whether the solution meets the stated goals Any of the solutions might solve the problem. It is also possible that none of the solutions solve the problem.

Once you answer a question in this section, you will NOT be able to return to it As a result, these questions will not appear in the review screen

Note This question is part of a series of questions that present the same scenario Each question in the series contains a unique solution Determine whether the solution meets the stated goals.

Your network contains an Active Directory forest named contoso.com. The forest contains a member server named Server1 that runs Windows Server 2016 All domain controllers run Windows Server 2012 R2

Contoso com has the following configuration

```
PS C:\> (Get-ADForest). ForestMode
Windows2008R2Forest

PS C:\> (Get-ADDomain). DomainMode
Windows2008R2Domain
PS C:\>
```

You plan to deploy an Active Directory Federation Services (AD FS) farm on Served and to configure device registration You need to configure Active Directory to support the planned deployment. Solution You upgrade a domain controller to Windows Server 2016 Does this meet the goal?

- A. Yes
- B. No

Answer: B

NEW QUESTION 61

In this section, you'll see one or more sets of questions with the same scenario and problem Each question presents a unique solution to the problem, and you must determine whether the solution meets the stated goals. Any of the solutions might solve the problem. It is also possible that none of the solutions solve the problem. Once you answer a question in this section, you will NOT be able to return to it. As a result, these questions will not appear in the review screen Note: This question is part of a series of questions that present the same scenario. Each question in the series contains a unique solution. Determine whether the solution meets the stated goals. Your network contains an Active Directory domain named contoso.com. The domain contains a DNS server named Server1. All client computers run Windows 10. On Server1, you have the following zone configuration

ZoneName	ZoneType	IsAutoCreated	IsDsIntegrated	IsReverseLookupZone	IsSign
-----	-----	-----	-----	-----	-----
_msdcs.contoso.com	Primary	False	True	False	False
adatum.com	Forwarder	False	False	False	
contoso.com	Primary	False	True	False	False
fabrikam.com	Primary	False	False	False	True
TrustAnchors	Primary	False	True	False	False

You have the following subnets defined on Server1.

Name	IPv4Subnet	IPv6Subnet
----	-----	-----
Subnet1	{10.0.0.0/24}	
Subnet2	{10.0.1.0/24}	
Subnet3	{192.168.15.0/24}	
Subnet4	{172.16.1.0/24}	

You need to prevent Server1 from resolving queries from DNS clients located on Subnet4 Server1 must resolve queries from all other DNS clients Solution From a Group Policy object (GPO) in tne domain, you modify the Network List Manager Policies Does this meet the goal?

- A. Yes
- B. No

Answer: B

NEW QUESTION 65

In this section, you'll see one or more sets of questions with the same scenario and problem Each question presents a unique solution to the problem, and you must determine whether the solution meets the stated goals. Any of the solutions might solve the problem. It is also possible that none of the solutions solve the problem. Once you answer a question in this section, you will NOT be able to return to it. As a result, these questions will not appear in the review screen Note: This question is part of a series of questions that present the same scenario. Each question in the series contains a unique solution. Determine whether the solution meets the stated goals. Your network contains an Active Directory domain named contoso.com. The domain contains a DNS server named Server1. All client computers run Windows 10. On Server1, you have the following zone configuration

ZoneName	ZoneType	IsAutoCreated	IsDsIntegrated	IsReverseLookupZone	IsSign
-----	-----	-----	-----	-----	-----
_msdcs.contoso.com	Primary	False	True	False	False
adatum.com	Forwarder	False	False	False	
contoso.com	Primary	False	True	False	False
fabrikam.com	Primary	False	False	False	True
TrustAnchors	Primary	False	True	False	False

You have the following subnets defined on Server1.

Name	IPv4Subnet	IPv6Subnet
----	-----	-----
Subnet1	{10.0.0.0/24}	
Subnet2	{10.0.1.0/24}	
Subnet3	{192.168.15.0/24}	
Subnet4	{172.16.1.0/24}	

You need to prevent Server1 from resolving queries from DNS clients located on Subnet4 Server1 must resolve queries from all other DNS clients
Solution From Windows PowerShell on Setver1, you run the Add-DnsServerTrustAnchor cmdtel Does this meet the goal?

- A. Yes
- B. No

Answer: A

NEW QUESTION 68

In this section, you'll see one or more sets of questions with the same scenario and problem Each question presents a unique solution to the problem, and you must determine whether the solution meets the stated goals Any of the solutions might solve the problem. It is also possible that none of the solutions solve the problem.
Once you answer a question in this section, you will NOT be able to return to it As a result. these questions will not appear in the review screen
Note This question is part of a series of questions that present the same scenario Each question in the series contains a unique solution Determine whether the solution meets the stated goals.
Your network contains an Active Directory forest named contoso.com. The forest contains a member server named Server1 that runs Windows Server 2016 All domain controllers run Windows Server 2012 R2
Contoso com has the following configuration

```
PS C:\> (Get-ADForest). ForestMode
Windows2008R2Forest

PS C:\> (Get-ADDomain). DomainMode
Windows2008R2Domain
PS C:\>
```

You plan to deploy an Active Directory Federation Services (AD FS) farm on Server1 and to configure device registration You need to configure Active Directory to support the planned deployment. Solution You raise the forest functional level to Windows Server 2012R2.
Does this meet the goal?

- A. Yes
- B. No

Answer: A

NEW QUESTION 73

Note: This question is part of a series of questions that present the same scenario. Each question in the series contains a unique solution that might meet the stated goals. Some question sets might have more than one correct solution, while others might not have a correct solution.
After you answer a question in this section, you will NOT be able to return to it. As a result, these questions will not appear in the review screen.
You have two servers that run Windows Server 2016.
You plan to create a Network Load Balancing (NLB) cluster that will contain both servers. You need to configure the network cards on the servers for the planned NLB configuration.
Solution: You configure the network cards to be on the same subnet and to have static IP addresses. You configure the cluster to use multicast.
Does this meet the goal?

- A. Yes
- B. No

Answer: A

Explanation:

References:

<https://technet.microsoft.com/en-us/windows-server-docs/networking/technologies/network-load-balancing>

NEW QUESTION 78

Note This question is part of a series of questions that present the same scenario. Each question in the series contains a unique solution that might meet the stated goals. Some question sets might have more than one correct solution, while others might not have a correct solution.

After you answer a question in this section, you will NOT be able to return to it. As a result, these questions will not appear in the review screen.

You are a server administrator at a company named Contoso, Ltd.

Contoso has a Windows Server 2016 Hyper-V environment configured as shown in the following table.

Hyper-V host name	Configuration	Virtual switch name
Host1	- Uses an Intel processor - Is a member of a SAN named SAN1	Switch1
Host2	- Uses an AMD processor - Has local storage only	Switch2
Host3	- Uses an Intel processor - Is a member of a SAN named SAN1	Switch1
Host4	- Uses an Intel processor - Has local storage only	Switch2

All of the virtual switches are of the external type.

You need to ensure that you can move virtual machines between the hosts without causing the virtual machines to disconnect from the network.

Solution: You implement live migration by using Host1 and Host2. Does this meet the goal?

A. Yes

B. No

Answer: B

NEW QUESTION 82

Note: This question is part of a series of questions that present the same scenario. Each question in the series contains a unique solution that might meet the stated goals. Some question sets might have more than one correct solution, while others might not have a correct solution.

After you answer a question in this section, you will NOT be able to return to it. As a result, these questions will not appear in the review screen.

You are a server administrator at a company named Contoso, Ltd.

Contoso has a Windows Server 2016 Hyper-V environment configured as shown in the following table.

Hyper-V host name	Configuration	Virtual switch name
Host1	- Uses an Intel processor - Is a member of a SAN named SAN1	Switch1
Host2	- Uses an AMD processor - Has local storage only	Switch2
Host3	- Uses an Intel processor - Is a member of a SAN named SAN1	Switch1
Host4	- Uses an Intel processor - Has local storage only	Switch2

All of the virtual switches are of the external type.

You need to ensure that you can move virtual machines between the hosts without causing the virtual machines to disconnect from the network.

Solution: You implement a Hyper-V Replica between Host2 and Host4. Does this meet the goal?

A. Yes

B. No

Answer: B

NEW QUESTION 87

Note: This question is part of a series of questions that present the same scenario. Each question in the series contains a unique solution that might meet the stated goals. Some question sets might have more than one correct solution, while others might not have a correct solution.

Your network contains an Active Directory forest

You install Windows Server 2016 on 10 virtual machines.

You need to deploy the Web Server (IIS) server role identically to the virtual machines.

Solution: You use Windows PowerShell Desired State Configuration (DSC) to create a default configuration and then you apply the configuration the virtual machines.

- A. Yes
- B. No

Answer: A

Explanation:

References:

<https://www.simple-talk.com/sysadmin/powershell/powershell-desired-state-configuration-the-basics/>

NEW QUESTION 90

Note: This question is part of a series of questions that present the same scenario. Each question in the series contains a unique solution that might meet the stated goals. Some question sets might have more than one correct solution, while others might not have a correct solution.

You have a server named Server1 that runs Windows Server 2016. Server1 hosts a line-of-business application named App1. App1 has a memory leak that occasionally causes the application to consume an excessive amount of memory.

You need to log an event in the Application event log whenever App1 consumes more than 4 GB of memory.

Solution: You create a system configuration information data collector. Does this meet the goal?

- A. Yes
- B. No

Answer: B

NEW QUESTION 92

You have an Active Directory domain named Contoso.com. The domain contains servers named Server1, Server2, and Server3 that run Windows Server 2016. Server1 and Server2 are nodes in a Hyper-V cluster named Cluster1. You add a Hyper-V Replica Broker role named Broker1 to Cluster1. Server3 is a Hyper-V server. A virtual machine named VM1 runs on Server3.

Live Migration is enabled on all three servers and it is configured to use Kerberos authentication only. You need to ensure that you can perform the migration of VM1 to Server2.

What should you do?

- A. Modify the Storage Migration settings on Server3.
- B. Modify the Cluster Permissions for Cluster1.
- C. Add the Server3 computer account to the Replicator group on Server1 and Server2.
- D. Modify the Delegation settings for the Server3 computer account.

Answer: D

Explanation:

References:

[https://technet.microsoft.com/en-us/library/jj134199\(v=ws.11\).aspx#BKMK_Step1](https://technet.microsoft.com/en-us/library/jj134199(v=ws.11).aspx#BKMK_Step1)

NEW QUESTION 95

HOTSPOT

You implement a Windows Server 2016 failover cluster named Cluster1 as a highly available file server.

You run the Get-Cluster cmdlet and receive the following output.

AddEvictDelay	: 60
AdministrativeAccessPoint	: Dns
AutoAssignNodeSite	: 0
AutoBalancerMode	: 2
AutoBalancerLevel	: 1
ClusSvcHangTimeout	: 135
ClusSvcRegroupStageTimeout	: 5
ClusSvcRegroupTickInMilliseconds	: 300
ClusterEnforcedAntiAffinity	: 0
ClusterFunctionalLevel	: 9
ClusterUpgradeVersion	: 7
ClusterGroupWaitDelay	: 120
ClusterLogLevel	: 3
ClusterLogSize	: 300
DatabaseReadWriteMode	: 0
DefaultNetworkRole	: 3
Description	:
Domain	: contoso.com
EnableSharedVolumes	: Enabled
FixQuorum	: 0
Id	: ec6121be-f816-426b-b550-72cafb943f1b
Name	: cluster1

Use the drop-down menus to select the answer choice that completes each statement based on the information presented in the graphic.

Answer Area

You can perform Cluster-Aware Updating (CAU) in [answer choice].

▼

self-updating mode only

remote-updating mode only

remote-updating mode and self-updating mode

You can use [answer choice] to create a file share in Cluster1.

▼

DFS Management

Failover Cluster Manager

File Server Resource Manager

Server Manager

- A. Mastered
- B. Not Mastered

Answer: A

Explanation:

Answer Area

You can perform Cluster-Aware Updating (CAU) in [answer choice].

▼

self-updating mode only

remote-updating mode only

remote-updating mode and self-updating mode

You can use [answer choice] to create a file share in Cluster1.

▼

DFS Management

Failover Cluster Manager

File Server Resource Manager

Server Manager

NEW QUESTION 97

You have a Windows Server 2016 Hyper-V failover cluster that contains two nodes named Node1 and Node2. On Node1, you create a virtual machine named VM01 by using Hyper-V Manager. You need to configure VM01 to move to Node2 automatically if Node1 becomes unavailable. What should you do?

- A. From Failover Cluster manager, run the configure Role actions.
- B. From Hyper-V Manager, click VM01 and click Enable Replication.
- C. From Hyper-V Manager Click Node 1 and the modify the hyper-V settings.
- D. From Windows Powershell, run the Enable-VMReplication cmdlet.

Answer: A

Explanation:

<http://windowsitpro.com/hyper-v/make-vm-highly-available-windows-server-2012>

NEW QUESTION 102

You have four servers named Server1, Server2, Server3, and Server4 that run Windows Server 2016. Each server has a single 4-TB SATA hard disk. To each server you attach a new 4-TB SATA hard disk. You need to create a new storage cluster that uses Storage Spaces Direct. The storage pool must contain all of the new disks. Which command should you run before you enable Storage Space Direct?

- A. Add-ClusterSharedVolume -Name "Disk 1" -Cluster Cluster1
- B. New-Cluster -Name Cluster1 -Node 'Server1', 'Server2', 'Server3', 'Server4' -NoStorage
- C. Get-ClusterAvailableDisk -Cluster Cluster1 | Add-ClusterDisk
- D. New-ClusterStorageEnclosure -id 1 -name Cluster1 -type jbod -ConnectionString "Server1,Server2,Server3,Server4"

Answer: B

NEW QUESTION 106

Note This question is part of a series of questions that use the same scenario. For your convenience, the scenario is repeated in each question. Each question presents a different goal and answer choices, but the text of the scenario is exactly the same in each question in this series.

Start of Repeated Scenario:

Your network contains an Active Directory domain named contoso.com. The functional level of the forest and the domain is Windows Server 2008 R2. All servers in the domain run Windows Server 2016 Standard. The domain contains 300 client computers that run either Windows 8.1 or Windows 10. The domain contains nine servers that are configured as shown in the following table.

Name	Configuration	Planned changes
Server1	Domain controller	None
Server2	File server	Run Failover Clustering and Storage Spaces Direct
Server3	File server	Run Failover Clustering and Storage Spaces Direct
Server4	Hyper-V host	Run shielded virtual machines
Server5	Hyper-V host	None
Server6	Member server	Run Active Directory Federation Services (AD FS)
VM1	Virtual machine hosted on Server5	None
VM2	Virtual machine hosted on Server5	None
VM3	Virtual machine hosted on Server5	None

The virtual machines are configured as follows:

- Each virtual machine has one virtual network adapter
 - VM1 and VM2 are part of a Network Load Balancing (NLB) cluster.
 - All of the servers on the network can communicate with all of the virtual machines. End of repeated Scenario.
- You need to minimize the likelihood that a virtual machine running malicious code will consume excessive resources on Server5. What should you do?

- A. Configure the virtual machines as shielded virtual machines.
- B. Run the Set-VMProcessor cmdlet and specify the –EnableHostResourceProtection Parameter.
- C. Run the Set-VMProcessor cmdlet and specify the –MaximumCountPerNumaNode Parameter.
- D. Configure VM Network Adapter Isolation.

Answer: B

NEW QUESTION 107

Note This question is part of a series of questions that use the same scenario. For your convenience, the scenario is repeated in each question. Each question presents a different goal and answer choices, but the text of the scenario is exactly the same in each question in this series.

Start of Repeated Scenario:

A company named Contoso, Ltd. has several servers that run Windows Server 2016. Contoso has a Hyper-V environment that uses failover clustering and Windows Server Update Services (WSUS). The environment contains several Windows containers and several virtual machines.

The WSUS deployment contains one upstream server that is located on the company's perimeter network and several downstream servers located on the internal network. A firewall separates the upstream server from the downstream servers.

You plan to deploy a human resources application to a new server named HRServer5. HRServer5 contains a FAT32-formatted data volume.

The CIO of Contoso identifies the following requirements for the company's IT department:

- Deploy failover cluster to two new virtual machines.
- Store all application databases by using Encrypted File System (EFS).
- Ensure that each Windows container has a dedicated IP address assigned by a DHCP server
- Produce a report that lists the processor time used by all of the processes on a server named Server 1 for five hours.

Encrypt all communication between the internal network and the perimeter network, including all WSUS communications.

- Automatically load balance the virtual machines hosted in the Hyper-V cluster when processor utilization exceeds 70 percent.

End of Repeated Scenario.

What should you do to prepare the data volume on HRServer5 to store the databases required for the human resources application?

- A. Format the data volume by using ReFS.
- B. Enable Trusted Platform Module (TPM) on HRServer5.
- C. Format the data volume by using NTFS.
- D. Enable BitLocker Drive Encryption (BitLocker) on the data volume.

Answer: C

NEW QUESTION 111

Your network contains a new Active Directory domain named contoso.com.

You have a security policy that states that new servers should run Nano Server whenever possible. Which server role can be deployed on a Nano Server?

- A. Active Directory Domain Services
- B. DHCP Server
- C. Network Policy and Access Services
- D. DNS Server / Web Server (IIS)

Answer: D

NEW QUESTION 112

You have a server named Server1 that runs Windows Server 2016.

The Windows Server 2016 installation media is mounted as drive D.

You copy the NanoServerImageGenerator folder from the D:\NanoServer folder to the C:\NanoServer folder.

You need to create a custom Nano Server image that includes the Hyper-V server role. The image will be used to deploy Nano Servers to physical servers.

Which two commands should you run? Each correct answer presents part of the solution.

- A. New-NanoServerImage –Edition Standard –DeploymentType Guest –MediaPath D:\ -TargetPath.\NanoServerImage\NanoServer.wim –Compute
- B. Install-PackageProvider NanoServerPackage
- C. Import-PackageProvider NanoServerPackage
- D. New-NanoServerImage –Edition Standard –DeploymentType Host –MediaPath D:\ -TargetPath.\NanoServerImage\NanoServer.wim–Compute
- E. Import-Module C:\NanoServer\NanoServerImageGenerator

Answer: DE

NEW QUESTION 114

You have a server named Server1 that runs Windows Server 2016. You need to install the DNS Server role on Server1. What should you run?

- A. the dns.exe command
- B. the optionalfeatures.exe command
- C. the Install-Package cmdlet
- D. the Enable-WindowsOptionalFeature cmdlet

Answer: D

NEW QUESTION 117

You have a server named Server 1 that runs Windows Server 2016 and has the Hyper-V server role installed. On Server1, you plan to create a virtual machine named VM1. You need to ensure that you can start VM1 from the network. What are two possible ways to achieve the goal? Each correct answer presents a complete solution.

- A. Create a generation 2 virtual machine.
- B. Create a generation 1 virtual machine and run theEnable-NetAdapterPackageDirectcmdlet.
- C. Create a generation 1 virtual machine that has a legacy network adapter.
- D. Create a generation 1 virtual machine and configure a single root I/O virtualization (SRV-IO) interface for the network adapter.

Answer: AC

NEW QUESTION 122

DRAG DROP

Your network contains two Hyper-V servers named Server1 and Server2. Server1 has Windows Server 2012 R2 installed. Server2 has Windows Server 2016 installed.

You perform a live migration of a virtual machine named VM1 from Server1 to Server2. You need to create a production checkpoint for VM1 on Server2. Which three Windows PowerShell cmdlets should you run in sequence? To answer, move the appropriate Windows PowerShell cmdlets from the list of actions to the answer area and arrange them in the correct order.

Cmdlets

Set-VM

Update-VMVersion

Checkpoint-VM

Set-VMHost

Stop-VM

Answer Area

<

>

↑

↓

- A. Mastered
- B. Not Mastered

Answer: A

Explanation:

Cmdlets

Set-VM

Update-VMVersion

Checkpoint-VM

Set-VMHost

Stop-VM

Answer Area

Stop-VM

Update-VMVersion

Checkpoint-VM

<

>

↑

↓

NEW QUESTION 126

DRAG DROP

You are planning the configuration of a virtual network switch for a Hyper-V environment. The environment will contain the following Hyper-V hosts:

- A server named Server1 will have 10 virtual machines that must be able to communicate with each other. The virtual machines must be prevented from communicating with Server1 and all other servers on the corporate network.
- A two-code failover cluster named Cluster1 will have 20 virtual machines. The virtual machines will run on both nodes. Hyper-V hosts on the corporate network must be able to connect to the virtual machines.

Which type of virtual switch should you select for each Hyper-V host? To answer, drag the appropriate virtual switch types to the correct hosts. Each virtual switch type must be used once, more than once, or not at all. You may need to drag the split bar between panes or scroll to view content.

Virtual Switch Types

External

Internal

Private

Answer Area

10 virtual machines on Server1:

20 virtual machines on Cluster1:

- A. Mastered
- B. Not Mastered

Answer: A

Explanation:

Virtual Switch Types

External

Internal

Private

Answer Area

10 virtual machines on Server1:

20 virtual machines on Cluster1:

Private

External

NEW QUESTION 130

After you answer a question in this section, you will NOT be able to return to it. As a result, these questions will not appear in the review screen.

You have a server named Server1 that runs Windows Server 2016.

You plan to use Windows Server Backup to back up all of the data on Server1. You create a new volume on Server1.

You need to ensure that the new volume can be used as a backup target. The backup target must support incremental backups.

Solution: You mount the volume to C:\Backup, and you format the volume by using NTFS. Does this meet the goal?

- A. Yes
- B. No

Answer: A

NEW QUESTION 133

You have two servers named Server1 and Server2 that run Windows Server 2016.

You plan to implement Storage Replica to replicate the contents of volumes on Server1 to Server2. You need to ensure that the replication traffic between the servers is limited to a maximum of 100 Mbps.

Which cmdlet should you run?

- A. New-NetQosPolicy
- B. Set-NetworkController
- C. New-NetTransportFilter
- D. New-StorageQosPolicy

Answer: A

Explanation:

References: [https://technet.microsoft.com/en-us/library/hh967471\(v=wps.630\).aspx](https://technet.microsoft.com/en-us/library/hh967471(v=wps.630).aspx)

NEW QUESTION 138

DRAG DROP

You have a Hyper-V host named Server1 that runs Windows Server 2016. Server 1 hosts a virtual machine named VM1 that runs Windows Server 2016. Server1 has a USB 3.0 device attached to a PCI Express (PCIe) bus.

You need to provide VM1 with pass-through access to the USB 3.0 device.
Which three actions should you perform in sequence? To answer, move the appropriate actions from the list of actions to the answer area and arrange them in the correct order.

Actions

On Server1, run the **Dismount-VMHostAssignableDevice** cmdlet.

On Server1, run the **Add-VMAssignableDevice** cmdlet

On Server1, run the **Disable-PnPDevice** cmdlet

On VM1, run the **Enable-PnPDevice** cmdlet

On VM1, ran the **Mount-VMHostAssignable Device** cmdlet

Answer Area

1

2

3

- A. Mastered
- B. Not Mastered

Answer: A

Explanation:

Actions

On Server1, run the **Dismount-VMHostAssignableDevice** cmdlet.

On Server1, run the **Add-VMAssignableDevice** cmdlet

Answer Area

1

On VM1, ran the **Mount-VMHostAssignable Device** cmdlet

2

On VM1, run the **Enable-PnPDevice** cmdlet

3

On Server1, run the **Disable-PnPDevice** cmdlet

NEW QUESTION 139

DRAG DROP

You are preparing an image of Windows Server 2016.
The image is missing the driver foe a network adapter that is required in your environment. You need to ensure that the image contains the network adapter driver.
Which three cmdlets should you use in sequence? To answer, move the appropriate cmdlets from the list of cmdlets to the answer area and arrange them m the correct order.

Cmdlets

- Mount-WindowsImage
- Add-WindowsDriver
- Get-WindowsImage
- Save-WindowsImage
- Add-WindowsFeature
- Dismount-WindowsImage
- Optimize-WindowsImage

Answer Area

- 1
- 2
- 3

- A. Mastered
B. Not Mastered

Answer: A

Explanation:

Cmdlets

- Mount-WindowsImage
- Get-WindowsImage
- Save-WindowsImage
- Add-WindowsFeature

Answer Area

- 1

Add-WindowsDriver
- 2

Optimize-WindowsImage
- 3

Dismount-WindowsImage

NEW QUESTION 140

Your network contains an Active Directory domain named contoso.com. The domain contains two servers, Server and Server2 that run Windows Server 2016. Each server has an operating system disk and four data disks. All of the disks are locally attached SATA disks. Data disk, is initialized as an MBR disk, and has a single NTFS volume. You plan to implement Storage Spaces Direct by using the data disks on Server1 and Server2. You need to prepare the data disks for the Storage Spaces Direct implementation. What should you do?

- A. Convert the data disks to dynamic disks.

- B. Format the volumes on the data disks as exFAT.
- C. Initialize the data disks as GPT disks and create an ReFS volume on each disk.
- D. Delete the volumes from the data disks.

Answer: D

NEW QUESTION 142

Your network contains an Active Directory domain. The domain contains two Hyper-V hosts. You plan to perform live migrations between the hosts. You need to ensure that the live migration traffic is authenticated by using Kerberos. What should you do first?

- A. From Server Manager, install the Host Guardian Service server role on a domain controller.
- B. From Active Directory Users and Computers, add the computer accounts for both servers to the Cryptographic Operators group.
- C. From Active Directory Users and Computers, modify the Delegation properties of the computer accounts for both servers.
- D. From Server Manager, install the Host Guardian Service server role on both servers.

Answer: C

Explanation:

If you have decided to use Kerberos to authenticate live migration traffic, configure constrained delegation before you proceed to the rest of the steps. To configure constrained delegation

NEW QUESTION 144

You need to implement network virtualization. On which object should you configure the virtual subnet ID?

- A. Virtual switch
- B. Hyper-V server
- C. VM
- D. Virtual network adapter

Answer: A

NEW QUESTION 147

Note: This question is part of a series of questions that use the same or similar answer choices. An answer choice may be correct for more than one question in the series. Each question is independent of the other questions in this series. Information and details provided in a question apply only to that question. You have two servers named Server1 and Server2 that run Windows Server 2016. Server1 and Server2 have the Hyper-V server role installed and are nodes in a failover cluster.

On Server1, an administrator creates a virtual machine named VM1. You need to configure VM1 for high availability. Which tool should you use?

- A. the clussvc.exe command
- B. the cluster.exe command
- C. the Computer Management snap-in
- D. the configurehyperv.exe command
- E. the Disk Management snap-in
- F. the Failover Cluster Manager snap-in
- G. the Hyper-V Manager snap-in
- H. the Server Manager app

Answer: F

Explanation:

References:
<http://windowsitpro.com/hyper-v/make-vm-highly-available-windows-server-2012>

NEW QUESTION 149

DRAG DROP

Your network contains an Active Directory domain. The domain contains two domain controllers named DC1 and DC2. DC2 is a virtual machine that is hosted on a Hyper-V host named HyperV1. DC1 holds the PDC emulator operations master role.

You need to create a new domain controller named DC3 by using domain controller cloning.

Which five actions should you perform in sequence before you can import the cloned virtual machine? To answer, move the appropriate actions from the list of actions to the answer area and arrange them in the correct order.

NOTE: More than one order of answer choices is correct. You will receive credit for any of the correct orders you select.

Actions

- Stop DC2.
- Run the **New-ADDCCloneConfigFile** cmdlet.
- Modify the group membership of DC3.
- Export DC2.
- Run the **Get-ADDCCloningExcludedApplicationList** cmdlet.
- Modify the group membership of DC2.

Answer Area



- A. Mastered
- B. Not Mastered

Answer: A

Explanation:

Actions

- Stop DC2.
- Run the **New-ADDCCloneConfigFile** cmdlet.
- Modify the group membership of DC3.
- Export DC2.
- Run the **Get-ADDCCloningExcludedApplicationList** cmdlet.
- Modify the group membership of DC2.

Answer Area



- Modify the group membership of DC2.
- Run the **Get-ADDCCloningExcludedApplicationList** cmdlet.
- Run the **New-ADDCCloneConfigFile** cmdlet.
- Stop DC2.
- Export DC2.



NEW QUESTION 153

You create a Nano server image named Nano1.vhdx by using the New-NanoServerImage cmdlet. You attach Nano1.vhdx to a Generation 1 virtual machine named Nano1.

When you start Nano1, you get the following error message: "Boot failure. Reboot and select proper Boot device or Insert Boot Media in selected Boot device"

You need to successfully start Nano server. What should you do?

- A. Attach Nano1.vhdx to a SCSIcontroller.
- B. Recreate Nano1 as a Generation 2 virtual machine.
- C. Increase the memory of Nano1 to 512 Mb.
- D. Modify the BIOS settings of Nano1.

Answer: B

Explanation:

A Generation 1 VM cannot boot from a vhdx disk; only a Generation 2 VM can boot from an vhdx disk.

NEW QUESTION 158

HOTSPOT

Your network contains an Active Directory forest named contoso.com. You need to add a new domain named fabrikam.com to the forest. What command should you run? To answer, select the appropriate options in the answer area.

Answer Area

<div style="border: 1px solid #ccc; padding: 2px; margin-bottom: 2px;">▼</div> <div style="border: 1px solid #ccc; padding: 2px;"> Install-ADDSDomain Install-ADDSDomainController Install-ADDSEForest </div>	-DomainType	<div style="border: 1px solid #ccc; padding: 2px; margin-bottom: 2px;">▼</div> <div style="border: 1px solid #ccc; padding: 2px;"> TreeDomain ChildDomain </div>	<div style="border: 1px solid #ccc; padding: 2px; margin-bottom: 2px;">▼</div> <div style="border: 1px solid #ccc; padding: 2px;"> -InstallDns:\$true -NewDomainName fabrikam.com -ParentDomainName contoso.com </div>
---	-------------	---	--

- A. Mastered
- B. Not Mastered

Answer: A

Explanation:

Answer Area

<div style="border: 1px solid #ccc; padding: 2px; margin-bottom: 2px;">▼</div> <div style="border: 1px solid #ccc; padding: 2px;"> <div style="border: 2px solid red; padding: 2px;">Install-ADDSDomain</div> Install-ADDSDomainController Install-ADDSEForest </div>	-DomainType	<div style="border: 1px solid #ccc; padding: 2px; margin-bottom: 2px;">▼</div> <div style="border: 1px solid #ccc; padding: 2px;"> <div style="border: 2px solid red; padding: 2px;">TreeDomain</div> ChildDomain </div>	<div style="border: 1px solid #ccc; padding: 2px; margin-bottom: 2px;">▼</div> <div style="border: 1px solid #ccc; padding: 2px;"> -InstallDns:\$true -NewDomainName fabrikam.com -ParentDomainName contoso.com </div>
--	-------------	--	--

Explanation:

References:

[https://technet.microsoft.com/en-us/library/hh974722\(v=wps.630\).aspx](https://technet.microsoft.com/en-us/library/hh974722(v=wps.630).aspx)

NEW QUESTION 161

Note: This question is part of a series of questions that present the same scenario. Each question in the series contains a unique solution that might meet the stated goals. Some question sets might have more than one correct solution, while others might not have a correct solution.

After your answer a question in this section, you will NOT be able to return to it. As a result, these questions will not appear in the review screen.

Your network contains an Active Directory forest named contoso.com. You need to identify which server is the schema master.

Solution: From Windows PowerShell, you run Get-ADDomainController -Discover -Service 2. Does this meet the goal?

- A. Yes
- B. No

Answer: B

Explanation:

References:

<https://blogs.technet.microsoft.com/mempson/2007/11/08/how-to-find-out-who-has-your-fsso-roles/>

NEW QUESTION 165

Note: This question is part of a series of questions that present the same scenario. Each question in the series contains a unique solution that might meet the stated goals. Some question sets might have more than one correct solution, while others might not have a correct solution.

After your answer a question in this section, you will NOT be able to return to it. As a result, these questions will not appear in the review screen.

Your network contains an Active Directory forest named contoso.com. You need to identify which server is the schema master.

Solution: From a command prompt, you run netdom query fsmo. Does this meet the goal?

- A. Yes
- B. No

Answer: A

Explanation:

References: <https://blogs.technet.microsoft.com/mempson/2007/11/08/how-to-find-out-who-has-your-fsmo-roles/>

NEW QUESTION 166

Your Network contains one Active Directory domain named contoso.com. You pilot DirectAccess on the network. During the pilot deployment, you enable DirectAccess only for a group Contoso\Test Computers. Once the pilot is complete, you need to enable DirectAccess for all the client computers in the domain. What should you do?

- A. From Windows PowerShell, run the Set-DAClient cmdlet.
- B. From Windows PowerShell, run the Set-DirectAccess cmdlet.
- C. From Active Directory Users and Computers, modify the membership of the Windows Authorization Access Group.
- D. From Group Policy Management, modify the security filtering of an object named Direct Access Client Setting Group Policy.

Answer: D

NEW QUESTION 170

You have a server named Server1 that runs Windows Server 2016 and is configured as a domain controller. You install the DNS Server server role on Server1. You plan to store a DNS zone in a custom Active Directory partition. You need to create a new Active Directory partition for the zone. What should you use?

- A. Set-DnsServer
- B. Active Directory Sites and Services
- C. Dns.exe
- D. Dnscmd.exe

Answer: D

Explanation:

[https://technet.microsoft.com/en-us/library/ee649181\(v=ws.10\).aspx](https://technet.microsoft.com/en-us/library/ee649181(v=ws.10).aspx)

NEW QUESTION 173

You have two servers named Server1 and Server2 that run Windows Server 2016. You plan to implement Storage Replica to replicate the contents of volumes on Server1 to Server2. You need to ensure that the replication traffic between the servers is limited to a maximum of 100 Mbps. Which cmdlet should you run?

- A. Set-NetUDPSetting
- B. New-StorageQosPolicy
- C. Set-SmbBandwidthLimit
- D. Set-NetTCPSetting

Answer: C

NEW QUESTION 178

You have a Hyper-V host named Server1 that runs Windows Server 2016. Server1 hosts a virtual machine named VM1. VM1 is in a workgroup. VM1 is currently in a running state. You need to create 10 copies of VM1 on Server1 in the least amount of time possible. Which cmdlets should you use?

- A. Stop-VM, and then Import-VM
- B. Export-VM, and then Import-VM
- C. Checkpoint-VM, and then New-VM
- D. Copy-VMFile, and then New-VM

Answer: B

NEW QUESTION 182

You deploy two servers that run Windows Server 2016. You install the Failover Clustering feature on both servers. You need to create a workgroup cluster. What should you do?

- A. Configure both of the server to be in a workgroup named Workgrou
- B. Configure the Cluster Service to log on as Network Servic
- C. Run the New-Cluster cmdlet and specify an administrative access point of None.
- D. Create matching local administrative accounts on both of the server
- E. Assign the same primary DNS suffix to both of the server
- F. Run the New-Cluster cmdlet and specify an administrative access point of DNS.
- G. Configure both of the server to be in a workgroup named Workgrou
- H. Configure the Cluster Service to log on as Network Servic
- I. Run the New-Cluster cmdlet and specify an administrative access point of DNS.
- J. Create matching local administrative accounts on both of the server
- K. Assign the same primary DNS suffix to both of the server
- L. Run the New-Cluster cmdlet and specify an administrative access point of None

Answer: B

Explanation:

References:

<https://rlevchenko.com/2015/09/07/workgroup-and-multi-domain-clusters-in-windows-server-2016/>

NEW QUESTION 186

Note: This question is part of a series of questions that use the same scenario. For your convenience, the scenario is repeated in each question. Each question presents a different goal and answer choices, but the text of the scenario is exactly the same in each question in this series.

Start of repeated scenario

Your network contains an Active Directory domain named contoso.com. The functional level of the forest and the domain is Windows Server 2008 R2. All servers in the domain run Windows Server 2016 Standard. The domain contains 300 client computers that run either Windows 8.1 or Windows 10.

The domain contains nine servers that are configured as shown in the following table.

Server name	Configuration	Planned changes
Server1	Domain controller	None
Server2	File server	Run Failover Clustering and Storage Spaces Direct
Server3	File server	Run Failover Clustering and Storage Spaces Direct
Server4	Hyper-V host	Run shielded virtual machines
Server5	Hyper-V host	None
Server6	Member server	Run Active Directory Federation Services (AD FS)
VM1	Virtual machine hosted on Server 5	None
VM2	Virtual machine hosted on Server 5	None
VM3	Virtual machine hosted on Server 5	None

The virtual machines are configured as follows:

- Each virtual machine has one virtual network adapter.
- VM1 and VM2 are part of a Network Load Balancing (NLB) cluster.
- All of the servers on the network can communicate with all of the virtual machines. End of repeated scenario.

You create a new NLB cluster that contains VM3.

You need to ensure that VM2 can remain in the original cluster and be added to the new cluster. What should you do first?

- A. Add a new virtual network adapter to VM2.
- B. Install the Web Application Proxy server role on VM2 and VM3.
- C. Modify the default port rule.
- D. Change the cluster operation mode.

Answer: A

NEW QUESTION 190

Your manager has asked you to configure the company Windows Server 2016 domain controller.

He wants all new computer accounts to be placed in the General OU, when computers join the domain.

Which command should you use to accomplish this?

- A. Dsmove
- B. Netdom
- C. Redircmp
- D. None of these

Answer: C

Explanation:

The Redircmp command is used to redirect the default OU of a newly created object such as a user to another OU.

NEW QUESTION 194

With Nano Server some packages are installed directly with their own Windows PowerShell switches (such as -Compute); others you install by passing package names to the -Packages parameter, which you can combine in a comma-separated list.

You want to add IIS to your Nano Server, which command should you use?

- A. -Compute
- B. -Packages
- C. -Containers
- D. -Storage

Answer: B

Explanation:

IIS is added by using -Packages Microsoft-NanoServer-IIS-Package.

NEW QUESTION 197

Nano Server is foundational to the modern datacenter and is useful in two core scenarios: As a private cloud infrastructure it's particularly useful for clustered Hyper-V, clustered storage and core networking services scenarios; or as an application platform it's highly optimized for modern distributed and cloud-based apps which leverage containers and micro service architectures.

Is the following statement TRUE or FALSE?

A local interface with UI support is available for offline management of Nano Servers?

- A. TRUE
- B. FALSE

Answer: B

Explanation:

A local interface with UI support is NOT available for Nano servers. You must administer them remotely using PowerShell.

NEW QUESTION 202

You have decided to install Windows Server 2016 by choosing the Service Core Installation option. If you want to install, configure or uninstall server roles remotely, what tool would you use?

- A. Any of these
- B. Windows PowerShell
- C. Remote Server Administration Tools (RSAT)
- D. Server Manager

Answer: A

NEW QUESTION 206

You have two Hyper-V hosts named Server1 and Server2 that run Windows Server 2016. Server1 hosts a virtual machine named VM1 that is in a Running state. On Server1, you export VM1 and then you import VM1 on Server2. What is the current state of VM1 on Server2?

- A. Paused
- B. Off
- C. Saved
- D. Running

Answer: C

Explanation:

References: <https://blog.workinghardinit.work/2016/06/16/live-export-a-running-virtual-machine-or-a-checkpoint/>

NEW QUESTION 211

You plan to install a Nano Server on a physical server named Nano1. Nano1 will host several virtual machines that will use live migration. Which package should you install on Nano1?

- A. Microsoft-NanoServer-SecureStartup-Package
- B. Microsoft-NanoServer-ShieldedVM-Package
- C. Microsoft-NanoServer-Compute-Package
- D. Microsoft-NanoServer-FailoverCluster-Package
- E. Microsoft-NanoServer-Storage –Package

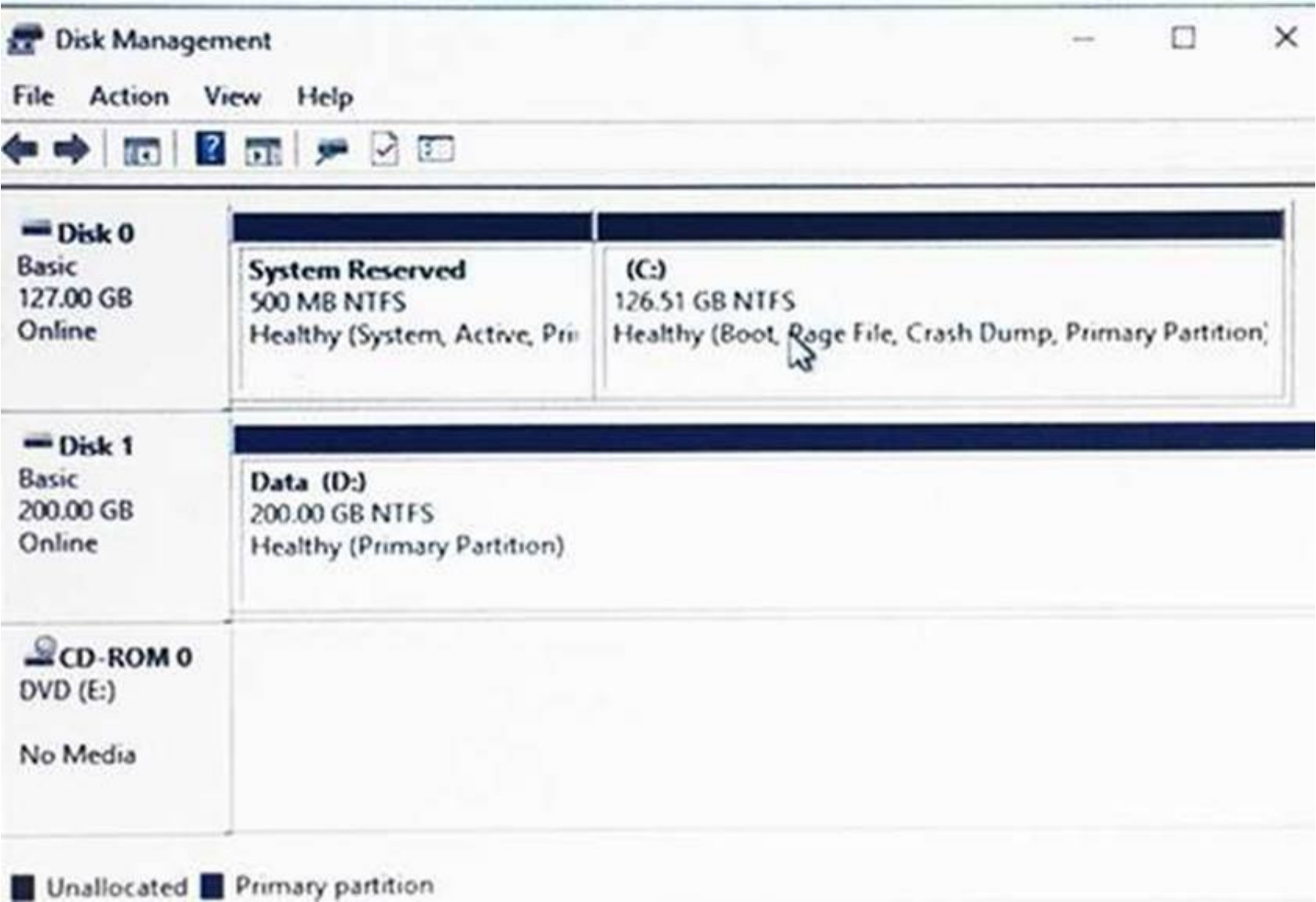
Answer: C

NEW QUESTION 214

DRAG DROP

You have a Hyper-V host named Server1 that runs Windows Server 2016. Server1 hosts a virtual machine named VM1. VM1 runs Windows Server 2016. VM1 uses a VHD for storage.

The disk configuration of VM1 is shown in the exhibit. (Click the Exhibit button.)



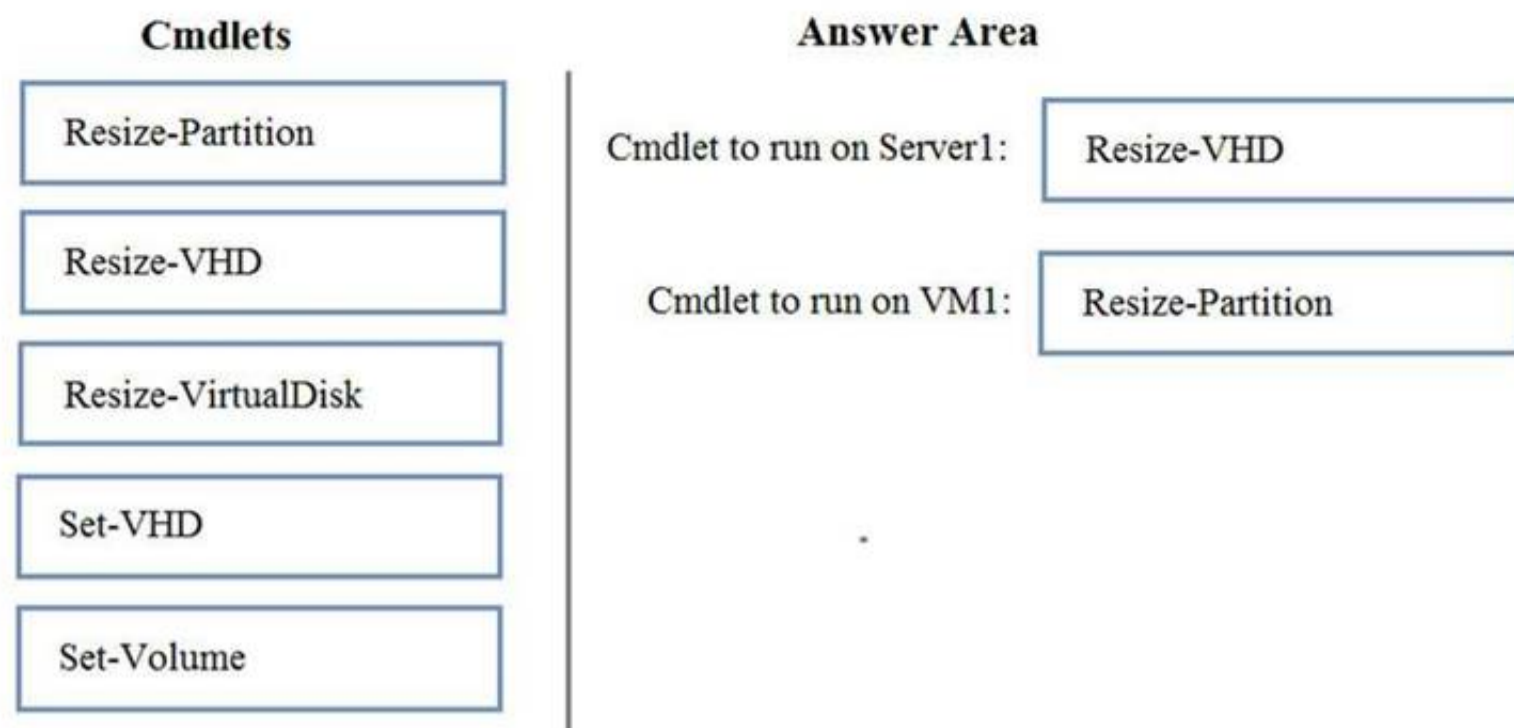
You need to increase the size of volume D to 400 GB.
Which cmdlets should you run on Server1 and VM1? To answer, drag the appropriate cmdlets to the correct servers. Each cmdlet may be used once, more than once, or not at all. You may need to drag the split bar between panes or scroll to view content.
NOTE: Each correct selection is worth one point.

Cmdlets	Answer Area
Resize-Partition	Cmdlet to run on Server1: <div>Cmdlet</div>
Resize-VHD	Cmdlet to run on VM1: <div>Cmdlet</div>
Resize-VirtualDisk	
Set-VHD	
Set-Volume	

- A. Mastered
- B. Not Mastered

Answer: A

Explanation:



NEW QUESTION 218

You create a Storage Spaces Direct hyper-converged failover cluster. The cluster contains three nodes and a 1-TB Storage Spaces Direct volume. The cluster will store virtual machines.

You plan to extend the volume by adding an additional 3 TB.

What is the minimum amount of extra disk capacity required to accommodate extending the volume?

- A. 3TB on the coordinator node
- B. 3 TB per node
- C. 4 TB per node
- D. 4 TB on the coordinator node

Answer: B

Explanation:

References:

<https://docs.microsoft.com/en-us/windows-server/storage/storage-spaces/drive-symmetry-considerations>

NEW QUESTION 223

You have a server named Server1 that runs Windows Server 2016. Server1 is a member of contoso.com. Server1 has the Hyper-V role installed. Virtual machines on Server1 are connected to an external switch named Switch1.

You create a virtual machine named VM1 on Server1 by running the following cmdlets.

```
Add-VM VM1
Add-VMHardDiskDrive -VMName VM1 -ControllerType IDE -Path c:\VMs\Disk1.vhd
Add-VMNetworkAdapter -VMName VM1
```

You need to ensure that you can install the operating system on VM1 by using Windows Deployment Services.

What should you do?

- A. Modify the SwitchType parameter of Switch1.
- B. Modify the DefaultFlowMinimumBandwidthWeight parameter of Switch1.
- C. Add a SCSI controller to VM1.
- D. Add a legacy network adapter to VM1.

Answer: D

NEW QUESTION 227

You have a Hyper-V host named Server1 that runs Windows Server 2016. Server1 hosts a virtual machine named VM1 that runs Windows Server 2016. You install the Hyper-V server role on VM1.

You need to ensure that the virtual machines hosted on VM1 can communicate with the virtual machines hosted on Server1.

What should you do?

- A. On Server1, run the Set-VmNetworkAdapterIsolation cmdlet and specify the -MultiTenantStack Off parameter.
- B. On VM1, run the Set-VMNetworkAdapter cmdlet and specify the -MacAddressSpoofing Off parameter.
- C. On VM1, run the Set-VmNetworkAdapterIsolation cmdlet and specify the -MultiTenantStack On parameter.
- D. On Server1, run the Set-VMNetworkAdapter cmdlet and specify the -MacAddressSpoofing On parameter.

Answer: C

Explanation:

References: <https://docs.microsoft.com/en-us/powershell/module/hyper-v/set-vmnetworkadapterisolation?view=win10-ps>

NEW QUESTION 229

Note: This question is part of a series of questions that present the same scenario. Each question in

the series contains a unique solution that might meet the stated goals. Some question sets might have more than one correct solution, white others might not have a correct solution.

You have a server named Server1 that runs Windows Server 2016. Server1 hosts a line-of-business application named App1. App1 has a memory leak that occasionally causes the application to consume an excessive amount of memory.

You need to log an event in the Application event log whenever App1 consume more than 4 GB of memory.

Solution: You create a performance counter data collector. Does this meet the goal?

- A. Yes
- B. No

Answer: B

NEW QUESTION 230

DRAG DROP

Your network contains an Active Directory domain named contoso.com. The domain contains a server named Server1 that runs Windows Server 2016. Server1 allows inbound connectivity from all computers in the contoso.com domain. Server1 has an IP address of 192.168.0.10. Server1 hosts a Windows container named Container1. Container1 hosts a website that is accessible on port 80. You need to ensure that you can use the Docker(?) client to manage Container1 from any computer in the domain. Which four cmdlets should you run in sequence? To answer, move the appropriate cmdlets from the list of cmdlets to the answer area and arrange them in the correct order.

Actions

Restart-Service docker

New-ContainerNetwork- Name nat1 – Mode NAT- SubnetPrefix 192.168.0.0/24 – GatewatAddress 192.168.0.10

Add-Content 'c:\programdata\docker\config\daemon.json' '{"hosts": [{"tcp://127.0.0.1:80", "npipe://"}]}'

Add-Content 'c:\programdata\docker\config\daemon.json' '{"hosts": [{"tcp://0.0.0.0:2375", "npipe://" }]}'

New-Item-Type File c:\programData\docker\confing\daemon.json

Answer Area

>

<

^

v

- A. Mastered
- B. Not Mastered

Answer: A

Explanation:

New-Item-Type File
c:\programData\docker\confing\daemon.json

Add-Content
'c:\programdata\docker\config\daemon.json'
'{"hosts": [{"tcp://0.0.0.0:2375", "npipe://" }]}'

Restart-Service docker

New-ContainerNetwork- Name nat1 – Mode NAT- SubnetPrefix 192.168.0.0/24 – GatewatAddress 192.168.0.10

NEW QUESTION 235

You have three Hyper-V hosts named Server1, Server2, and Server3 that run Windows Server 2016. The servers are nodes in a failover cluster. The failover cluster contains two virtual machines named VM1 and VM2. The roles for VM1 and VM2 have the following configurations.

```
PS C:\> Get-ClusterGroup vm1,vm2 | fl *
```


AntiAffinityClassNames	: {}
AutoFailbackType	: 0
ColdStartSetting	: 0
Cluster	: Cluster1
DefaultOwner	: 1
Description	:
GroupType	: VirtualMachine
FailoverPeriod	: 6
FailoverThreshold	: 4294967295
FailbackWindowEnd	: 4294967295
FailbackWindowStart	: 4294967295
IsCoreGroup	: False
Name	: vm1
OwnerNode	: Server1
PersistentState	: 1
PreferredSite	: {}
Priority	: 0
ReliliencyPeriod	: 429467295
State	: Online
StatusInformation	: 0
Id	: d02c87d1-8a1c-4fffb-b87d-adf059416f25

AntiAffinityClassNames	: {}
AutoFailbackType	: 0
ColdStartSetting	: 0
Cluster	: Cluster1
DefaultOwner	: 1
Description	:
GroupType	: VirtualMachine
FailoverPeriod	: 6
FailoverThreshold	: 4294967295
FailbackWindowEnd	: 4294967295
FailbackWindowStart	: 4294967295
IsCoreGroup	: False
Name	: vm2
OwnerNode	: Server1
PersistentState	: 1
PreferredSite	: {}
Priority	: 3000
ResiliencyPeriod	: 4294967295
State	: Online
StatusInformation	: 0
Id	: ab38e657-bfcf-463d-a88b-d4e99aff4ef1

All of the nodes in the failover cluster have sufficient resources to run VM1 and VM2 concurrently. VM1 and VM2 fail over to Server3. What is the state of each virtual machine after the failover?

- A. Both VM1 and VM2 are stopped.
- B. Both VM1 and VM2 are running.
- C. VM1 is stopped and VM2 is running.
- D. VM1 is stopped and VM2 is paused.

Answer: C

Explanation:

References:

[https://msdn.microsoft.com/en-us/library/jj151956\(v=vs.85\).aspx](https://msdn.microsoft.com/en-us/library/jj151956(v=vs.85).aspx)

NEW QUESTION 240

You have two Hyper-V hosts named Server1 and Server2 that run Windows Server 2016. The hosts are nodes in failover cluster. You have a virtual machine named VM1. VM1 connects to a virtual switch named vSwitch1. You discover that VM1 automatically live migrates when vSwitch temporarily disconnects. You need to prevent VM1 from being live migrated when vSwitch1 temporarily disconnects. What should you do?

- A. Run the Set-VMNetworkAdapter cmdlet and set StormLimit to 0.
- B. From the network adapter setting of VM1, disable the Heartbeat integration service.
- C. Run the Set-VMNetworkAdapter cmdlet and set IsManagementOS to False.
- D. From the network adapter setting of VM1, disable the Protected network setting.

Answer: D

NEW QUESTION 241

HOTSPOT

You have a Windows Server 2016 failover cluster that has a cluster network named ClusterNetwork1. You need to ensure that ClusterNetwork1 is enabled for cluster communication only.

What command should you run? To answer, select the appropriate options in the answer area.

Answer Area

(ClusterNetwork1). =1

Get-ClusterNetwork
Get-ClusterResource
Set-ClusterParameter
Update-ClusterIPResource

ID
Metric
Role
State

- A. Mastered
- B. Not Mastered

Answer: A

Explanation:

Answer Area

(ClusterNetwork1). =1

Get-ClusterNetwork
Get-ClusterResource
Set-ClusterParameter
Update-ClusterIPResource

ID
Metric
Role
State

NEW QUESTION 244

Note: This question is part of a series of questions that present the same scenario. Each question in the series contains a unique solution that might meet the stated goals. Some question sets might have more than one correct solution, while others might not have a correct solution.

After you answer a question in this section, you will NOT be able to return to it. As a result, these questions will not appear in the review screen.

You network contains an Active Directory domain named contoso.com.

You need to create a Nano Server image named Nano1 that will be used as a virtualization host. The Windows Server 2016 source files are located in drive D.

Solution: You run the following cmdlet.

```
New-NanoServerImage -Edition Datacenter -DeploymentType Host -Compute
-MediaPath 'D:\' -TargetPath C:\Nano1\Nano1.wim -ComputerName Nano1
-DomainName Contoso.com
```

Does this meet the goal?

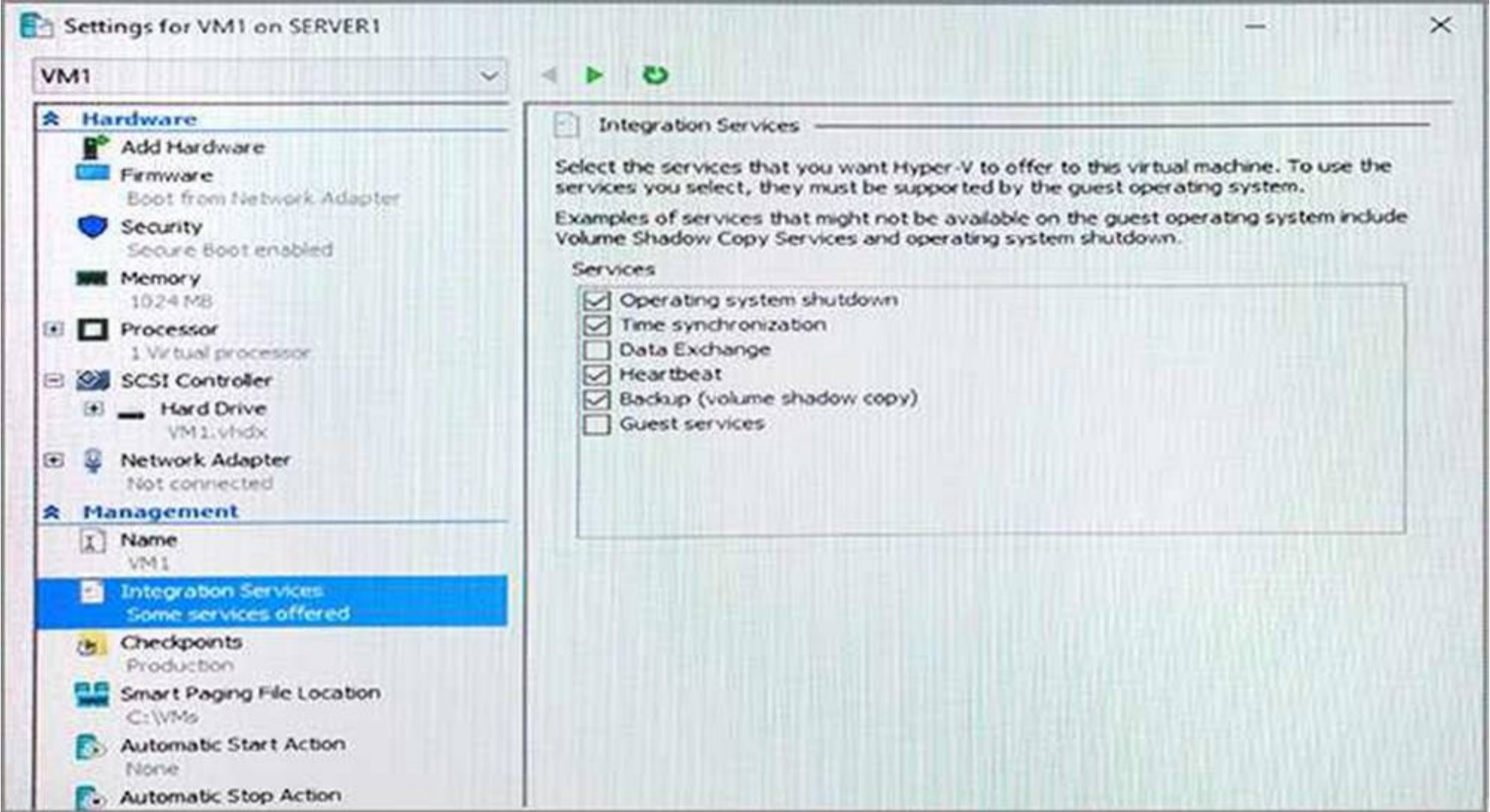
- A. Yes
- B. No

Answer: A

NEW QUESTION 249

Note: This question is part of a series of questions that present the same scenario. Each question in the series contains a unique solution that might meet the stated goals. Some question sets might

have more than one correct solution, while others might not have a correct solution.
After you answer a question in this section, you will NOT be able to return to it. As a result, these questions will not appear in the review screen.
You have a Hyper-V host named Server1 that hosts a virtual machine named VM1. Server1 and VM1 run Windows Server 2016.
The settings for VM1 are configured as shown in the exhibit. (Click the Exhibit button.)



You need to ensure that you can use the Copy-VMFile cmdlet on Server1 to copy files from VM1. Solution: You connect VM1 to an internal virtual switch. Does this meet the goal?

- A. Yes
- B. No

Answer: B

NEW QUESTION 250

Note: This question is part of a series of questions that present the same scenario. Each question in the series contains a unique solution that might meet the stated goals. Some question sets might have more than one correct solution, while others might not have a correct solution.
After you answer a question in this section, you will NOT be able to return to it. As a result, these questions will not appear in the review screen.
You have a server named Server1 that runs Windows Server 2016.
Server1 hosts a line-of-business application named App1. App1 has a memory leak that occasionally causes the application to consume an excessive amount of memory.
You need to log an event in the Application event log whenever App1 consumes more than 4 GB of memory.
Solution: You create an event trace data collector. Does this meet the goal?

- A. Yes
- B. No

Answer: B

NEW QUESTION 253

Note: This question is part of a series of questions that present the same scenario. Each question in the series contains a unique solution that might meet the stated goals. Some question sets might have more than one correct solution, while others might not have a correct solution.
After you answer a question in this section, you will NOT be able to return to it. As a result, these questions will not appear in the review screen.
You are a server administrator at a company named Contoso, Ltd.
Contoso has a Windows Server 2016 Hyper-V environment configured as shown in the following table.

Hyper-V host name	Configuration	Virtual switch name
Host1	- Uses an Intel processor - Is a member of a SAN named SAN1	Switch1
Host2	- Uses an AMD processor - Has local storage only	Switch2
Host3	- Uses an Intel processor - Is a member of a SAN named SAN1	Switch1
Host4	- Uses an Intel processor - Has local storage only	Switch2

All of the virtual switches are of the external type.

You need to ensure that you can move virtual machines between the hosts without causing the virtual machines to disconnect from the network.

Solution: You implement live migration by using Host2 and Host4. Does this meet the goal?

- A. Yes
- B. No

Answer: A

NEW QUESTION 255

You have Nano Server image named Disk1.vhdx.

You mount Disk1.vhdx.

You need to add a folder that contains several files to the image. Which tool or cmdlet you should use?

- A. File Explore.
- B. Add-Windows Image
- C. Nano Server Image Builder
- D. Server Manager

Answer: D

NEW QUESTION 259

DRAG DROP

Note: This question is part of a series of questions that use the same scenario. For your convenience, the scenario is repeated in each question. Each question presents a different goal and answer choices, but the text of the scenario is exactly the same in each question in this series.

A company named Contoso, Ltd. has several servers that run Windows Server 2016. Contoso has a Hyper-V environment that uses failover clustering and Windows Server Update Services (WSUS). The environment contains several Windows containers and several virtual machines.

The WSUS deployment contains one upstream server that is located on the company's perimeter network and several downstream servers located on the internal network. A firewall separates the upstream server from the downstream servers.

You plan to deploy a human resources application to a new server named HRServer5. HRServer5 contains a FAT32-formatted data volume.

The CIO of Contoso identifies the following requirements for the company's IT department: Deploy a failover cluster to two new virtual machines.

Store all application databases by using Encrypted File System (EFS).

Ensure that each Windows container has a dedicated IP address assigned by a DHCP server.

Produce a report that lists the processor time used by all of the processes on a server named Server1 for five hours.

Encrypt all communication between the internal network and the perimeter network, including all WSUS communications.

Automatically load balance the virtual machines hosted in the Hyper-V cluster when processor utilization exceeds 70 percent.

You need to configure the storage solution for the planned failover cluster.

You create two new generations 2 virtual machines on two separate Hyper-Vhosts named VM11 and VM12.

Which three actions should you perform in sequence next? To answer, move the appropriate actions from the list of actions to the answer area and arrange them in the correct order.

Actions

For each virtual machine, create a new system disk that uses the VNDX format and store the disks in Share1.

Create a VHDX file and store the file in the Clustered Shared Volume (CSV).

For each virtual machine, create a new system disk that uses the VHDX format and store the virtual machines on the Cluster Shared Volume (CSV).

Create a network share named Share1.

Create a Clustered Shared Volume (CSV).

To each virtual machine, add the VHDX file as a shared drive.

Answer Area

1

2

3

- A. Mastered
- B. Not Mastered

Answer: A

Explanation:

Actions

For each virtual machine, create a new system disk that uses the VNDX format and store the disks in Share1.

Create a network share named Share1.

To each virtual machine, add the VHDX file as a shared drive.

Answer Area

1

Create a Clustered Shared Volume (CSV).

2

For each virtual machine, create a new system disk that uses the VHDX format and store the virtual machines on the Cluster Shared Volume (CSV).

3

Create a VHDX file and store the file in the Clustered Shared Volume (CSV).

NEW QUESTION 260
HOTSPOT

You have a server named Server1 that runs Windows Server 2016.
 On Server1, you have a custom image of Windows Server 2016 Standard in a file named Image1.wim. The image is mounted to C:\Folder1.
 You discover corrupted files in the WinSxS folder of the mounted image.
 From the Windows Server 2016 installation media, you mount an image of Windows Server 2016 Standard from Install.wim to C:\Folder2.
 You need to repair the corrupted image.
 Which command should you run? To answer, select the appropriate options in the answer area. NOTE: Each correct selection is worth one point.

Answer Area

Dism /Cleanup-Image /Image:

C:\Folder1	/CheckIntegrity
C:\Folder1\image1.wim	/RestoreHealth
C:\Folder2\install.wim:1	/ScanHealth
C:\Folder2\Windows	/StartComponentCleanup

/Source:

C:\Folder1
C:\Folder1\image1.wim
C:\Folder2\install.wim:1
C:\Folder2\Windows

- A. Mastered
- B. Not Mastered

Answer: A

Explanation:

References: <https://docs.microsoft.com/en-us/windows-hardware/manufacture/desktop/repair-a-windows-image>

NEW QUESTION 261

HOTSPOT

You have two Hyper-V hosts named Server1 and Server2 that run Windows Server 2016. Server1 and Server2 connect to the same network. Server1 and Server2 have virtual switches configured as shown in the following table.

Switch name	Host	Type	VLAN ID
Switch1	Server1	External	2
Switch2	Server2	External	4
Switch3	Server2	Internal	<i>Not applicable</i>

You have nine virtual machines configured as shown in the following table.

Virtual machine name	Connected to	VLAN ID
VM1	Switch1	2
VM2	Switch1	<i>Not applicable</i>
VM3	Switch1	4
VM4	Switch2	2
VM5	Switch2	<i>Not applicable</i>
VM6	Switch2	4
VM7	Switch3	2
VM8	Switch3	<i>Not applicable</i>
VM9	Switch3	4

All of the virtual machines are configured to have IP addresses from the same network segment. The firewall on each of the virtual machines is configured to allow network connectivity.

To which virtual machines can you connect from VM1 and VM2? To answer, select the appropriate options in the answer area.

Answer Area

Virtual machines to which you can connect from VM1:

	▼
VM4 only	
VM4 and VM7	
VM2, VM4, and VM5	
None	

Virtual machines to which you can connect from VM2:

	▼
VM5 only	
VM1 and VM3	
VM5 and VM8	
VM5, VM7, VM8, and VM9	
None	

- A. Mastered
- B. Not Mastered

Answer: A

Explanation:

Answer Area

Virtual machines to which you can connect from VM1:

	▼
VM4 only	
VM4 and VM7	
VM2, VM4, and VM5	
None	

Virtual machines to which you can connect from VM2:

	▼
VM5 only	
VM1 and VM3	
VM5 and VM8	
VM5, VM7, VM8, and VM9	
None	

NEW QUESTION 262

You have two servers named Server1 and Server 2 that run Windows Server 2016. Server 1 and Server 2 are nodes in a Network Load Balancing (NLB) cluster. The Web Server server role is installed on each node. Users report that when they submit web form data, sometimes the data is not stored, and they must fill in the form again. You need to resolve the issue. The solution must ensure that connections are load balanced between Server 1 and Server 2. What should you do in the NLB cluster?

- A. Modify the existing port rules.
- B. Modify the Cluster operation mode.
- C. Add the Microsoft Load Balancing/Failover Provider service to all of the network adapters.
- D. Add an IP address.

Answer: B

NEW QUESTION 266

You have two Hyper-V hosts named Server1 and Server2 that run Windows Server 2016. The hosts are nodes in a failover cluster. A highly available virtual machine named VM1 is running on Server1. You need to move VM1 to Server2 while minimizing downtime. What should you do?

- A. From Windows PowerShell, run Move-ClusterGroup
- B. From Hyper-V Manager, use the Move action.

- C. From Failover Cluster Manager, use the Move Virtual Machine Storage option.
- D. From Windows PowerShell, run Move-VM.

Answer: A

NEW QUESTION 269

Your network contains an Active Directory domain named adatum.com The domain contains Network load Balancing (NLB) cluster as shown in the exhibit. (Click the Exhibit button.)
Which hosts will respond to requests sent to nlb.adatum.com?

Network Load Balancing Manager

File Cluster Host Options Help

Network Load Balancing Cluster

NLB.Adatum.com (192.168.10.50)

SERVER1 (Ethernet 2)

SERVER2 (Ethernet 2)

SERVER3 (Ethernet 2)

Host configuration information for hosts in cluster NLB.Adatum.com

Host (interface)	Status	Dedicated IP...	Dedic
SERVER1 (Ethernet 2)	Suspended	192.168.10.1	255.255
SERVER2 (Ethernet 2)	Converged	192.168.10.2	255.255
SERVER3 (Ethernet 2)	Stopped	192.168.10.3	255.255

Log En...	Date	Time	Cluster	Host	Description
0040	7/8/2017	2:07:53 AM	192.168.10...	SERVER2	End configuration change
00401	7/8/2017	2:07:53 AM	192.168.10...	SERVER1	Update 6 succeeded [double click
0042	7/8/2017	2:07:53 AM	192.168.10...	SERVER1	End configuration change

- A. Server1 only
- B. Server2 only
- C. Server1 an Server2 only
- D. Server1 ,Server2

Answer: B

NEW QUESTION 273

HOTSPOT

You have a server named Server1 that runs Windows Server 2016. You create a storage pool named Pool1. Pool1 contains three disks. You need to create a two-way mirror storage space from the disks in Pool1. Which command should you run? To answer, select the appropriate options in the answer area. NOTE: Each correct selection is worth one point.

Answer Area

New-StorageSunsystemVirtualDisk

New-VHD

New-VirtualDisk

New-Volume

-NumberOfDataCopies

1

2

3

-StoragePoolFirendlyName Pool1 -FirendlyName Space1-

-UseMaximumSize -ResiliencySettingName Mirror

-NumberOfColumns-

1

2

3

- A. Mastered
- B. Not Mastered

Answer: A

Explanation:

References: <https://charbelnemnom.com/2014/09/step-by-step-how-to-create-a-two-way-mirrored-storage-space-via-powershell-storagespaces-powershell/>

NEW QUESTION 276

You have a Windows Server 2016 failover cluster 1 that contains four nodes named Server1, Server2, Server3, Server4, Cluster1 hosts 40 virtual machines that are distributed evenly across the nodes. Server1 and Server2 are located in a data center in Madrid. Server3 and Server4 are located in a data center in Barcelona.

You need to ensure that when you pause a node in the other data center.

Which two actions should you perform? Each correct answer present part of the solution.

- A. Run the New-Cluster Fault Domain cmdlet.
- B. Run the Add-Cluster Group cmdlet.
- C. Configure a file share witness for each data center.
- D. Run the Set-Cluster Fault Domain cmdlet.
- E. Create an Active Directory site for each data center.
- F. Change the quorum configuration of the cluster to Node Majority.

Answer: BD

NEW QUESTION 277

You have a Hyper-V host named Server1 that runs Windows Server 2016. Server1 host a virtual machine named VM1. VM1 has the following settings: Nested virtualization is enabled.

Dynamic Memory is disabled. VM1 is currently running.

You need to adjust the amount of memory assigned to VM1 as quickly as possible. What should you do first?

- A. Change the memory buffer setting of VM1.
- B. Pause VM1.
- C. Shut down VM1.
- D. Enable Dynamic Memory for VM1.

Answer: D

NEW QUESTION 282

NOTE: This Question is a part of a series of questions that use the same or similar answer choices. An answer choice may be correct for more than one question in the series Each question is independent of the other questions in this series. Information and details provided in a question apply only to that question.

You have two- node Hyper-V cluster named Cluster1. A virtual machine named VM1 runs on Cluster1.

You need to configure monitoring of VM1. The solution must move VM1 to a different node if the Print Spooler service on VM1 stops unexpectedly.

Which tool should you use?

- A. the clussvc.exe command
- B. the cluster.exe command
- C. the computer Management snap-in
- D. the configurehyper.exe command
- E. the Disk Management snap-in
- F. the Failover Cluster Manager snap-in
- G. the Hyper-V Manager snap-in
- H. the Server Manager app

Answer: F

NEW QUESTION 285

You have a server named Server1 that runs Windows Server 2016.

The server has an application named App1. App1 writes entries to the Application event log when errors are encountered. The events have IDs of either 111 or 112.

You need to restart the service whenever either of these events is logged. What should you do?

- A. From Windows PowerShell, run the Write-EventLog cmdlet and specify the-EventID parameter and the -Source parameter.
- B. From Event Viewer, create a custom view that has a filter for the event IDs.
- C. From Event Viewer, create a subscription that has a filter for the event IDs.
- D. From Task Scheduler, use Create Task to create one task that includes triggers for both event IDs.
- E. From Windows PowerShell, run the Get-SMServerEvent cmdlet and pipe the output to the Start- NetEventSession cmdlet.
- F. From Performance Monitor, add an Event Trace Session data collector that uses the Microsoft- Windows-Eventlog provider.

Answer: D

NEW QUESTION 290

Note: This question is part of a series of questions that present the same scenario. Each question in the series contains a unique solution that might meet the stated goals. Some question sets might have more than one correct solution, while others might not have a correct solution.

After you answer a question in this section, you will NOT be able to return to it. As a result, these questions will not appear in the review screen.

You network contains an Active Directory forest named contoso.com. The forest contains a child domain named eu.contoso.com.

You plan to implement live migration between two Hyper-V hosts that run Windows Server 2016. The hosts are configured as shown in the following table.

Host name	Configuration
Host1	<ul style="list-style-type: none"> Is a member of the contoso.com domain Uses an Intel Xeon processor released in 2012 Has an external virtual switch named Switch1 Hosts a virtual machine named VM1 that connects to Switch1
Host2	<ul style="list-style-type: none"> Is a member of the eu.contoso.com domain Uses an Intel Xeon processor released in 2016 Has an external virtual switch named Switch1

You need to ensure that you can perform a live migration of VM1 from Host1 to Host2. Solution: You move Host2 to the contoso.com domain. Does meet the goal?

- A. Yes
 B. No

Answer: B

NEW QUESTION 294

Note: This question is part of a series of questions that use the same scenario. For your convenience, the scenario is repeated in each question. Each question presents a different goal and answer choices, but the text of the scenario is exactly the same in each question in this series.

A company named Contoso, Ltd. has several servers that run Windows Server 2016. Contoso has a Hyper-V environment that uses failover clustering and Windows Server Update Services (WSUS). The environment contains several Windows containers and several virtual machines.

The WSUS deployment contains one upstream server that is located on the company's perimeter network and several downstream servers located on the internal network. A firewall separates the upstream server from the downstream servers.

You plan to deploy a human resources application to a new server named HRServer5. HRServer5 contains a FAT32-formatted data volume.

The CIO of Contoso identifies the following requirements for the company's IT department:

Deploy a failover cluster to two new virtual machines.

Store all application databases by using Encrypted File System (EFS).

Ensure that each Windows container has a dedicated IP address assigned by a DHCP server.

Produce a report that lists the processor time used by all of the processes on a server named Server1 for five hours.

Encrypt all communication between the internal network and the perimeter network, including all WSUS communications.

Automatically load balance the virtual machines hosted in the Hyper-V cluster when processor utilization exceeds 70 percent.

Which networking mode should you configure for the Windows containers?

- A. 12tunnel
 B. 12bridge
 C. network address translation (NAT)
 D. transparent

Answer: C

Explanation:

References: <https://blogs.technet.microsoft.com/virtualization/2016/05/05/windows-container-networking/>

NEW QUESTION 297

You have Nano Server image named Disk1.vhdx. You mount Disk1.vhdx.

You need to add a folder that contains several files to the image. Which tool or cmdlet you should use?

- A. File Explore.
 B. Add-Windows Image
 C. Nano Server Image Builder
 D. Dism

Answer: D

NEW QUESTION 302

Note: This question is part of a series of questions that present the same scenario. Each question in the series contains a unique solution that might meet the stated goals. Some question sets might have more than one correct solution, while others might not have a correct solution.

After you answer a question in this section, you will NOT be able to return to it. As a result, these questions will not appear in the review screen.

You network contains an Active Directory forest named contoso.com. The forest contains a child domain named eu.contoso.com.

You plan to implement live migration between two Hyper-V hosts that run Windows Server 2016. The hosts are configured as shown in the following table.

Host name	Configuration
Host1	<ul style="list-style-type: none">Is a member of the contoso.com domainUses an Intel Xeon processor released in 2012Has an external virtual switch named Switch1Hosts a virtual machine named VM1 that connects to Switch1
Host2	<ul style="list-style-type: none">Is a member of the eu.contoso.com domainUses an Intel Xeon processor released in 2016Has an external virtual switch named Switch1

You need to ensure that you can perform a live migration of VM1 from Host1 to Host2.
Solution: You replace the processor in Host1 with a processor that is identical to the processor in Host2.
Does meet the goal?

- A. Yes
- B. No

Answer: B

NEW QUESTION 305
HOTSPOT

You have a Hyper-V host named Server1 that runs Windows Server 2016 datacenter. Server1 is activated.
On Server1, you deploy a virtual machine named VM1 that has a Server Core installation of Windows Server 2016 Standard.
You need to activate VM1 by using Automatic Virtual Machine Activation (AVMA).
Which command should you run? To answer, select the appropriate options in the answer area. NOTE: Each correct selection is worth one point.

Answer Area

reg.exe
regsvr32.exe
setup.exe
Set-VM
Set-WindowsProductKey
slmgr.vbs

/ipk
/pkey
/rearm
/unattend:PID=
-ProductKey

C3RCX-M6NRP-6CXC9-TW2F2-4RHYD

- A. Mastered
- B. Not Mastered

Answer: A

Explanation:
References: <https://blogs.technet.microsoft.com/askcore/2013/11/13/activating-virtual-machines-via-automatic-virtual-machine-activation-in-windows-server-2012-r2/>

NEW QUESTION 307
.....

Thank You for Trying Our Product

We offer two products:

1st - We have Practice Tests Software with Actual Exam Questions

2nd - Questions and Answers in PDF Format

70-740 Practice Exam Features:

- * 70-740 Questions and Answers Updated Frequently
- * 70-740 Practice Questions Verified by Expert Senior Certified Staff
- * 70-740 Most Realistic Questions that Guarantee you a Pass on Your First Try
- * 70-740 Practice Test Questions in Multiple Choice Formats and Updates for 1 Year

100% Actual & Verified — Instant Download, Please Click
[Order The 70-740 Practice Test Here](#)