

N10-007 Dumps

CompTIA Network+ N10-007

<https://www.certleader.com/N10-007-dumps.html>



NEW QUESTION 1

- (Exam Topic 1)

A technician is troubleshooting a workstation's network connectivity and wants to confirm which switchport corresponds to the wall jack the PC is using. Which of the following concepts would BEST jack the technician?

- A. Consistent labeling
- B. Change management
- C. Standard work instruction
- D. Inventory management
- D. Network baseline

Answer: A

NEW QUESTION 2

- (Exam Topic 1)

A penetration tester has been tasked with reconnaissance to determine which ports are open on the network. Which of the following tasks should be done FIRST? (Choose two.)

- A. Network scan
- B. Banner grab
- C. Tracert
- D. DHCP server check
- E. Brute-force attack

Answer: AC

NEW QUESTION 3

- (Exam Topic 1)

A technician is installing a new wireless badging system on a hospital network. The requirements of the badging system are for it to have its own SSID and low power levels. The badging system has to cover 99.9% of the hospital. Which of the following is the BEST action to take to meet the system requirements?

- A. Install additional WAPs
- B. Install external antennas
- C. Move the WAPs closer to the more populated area
- D. Change the antenna types

Answer: A

NEW QUESTION 4

- (Exam Topic 1)

A critical vulnerability is discovered on a network device. The vendor states it has already patched this vulnerability in its current release. Which of the following actions should an administrator take?

- A. Change the default password
- B. Use a firewall in front of the device.
- C. Update the firmware.
- D. Upgrade the configuration.

Answer: C

NEW QUESTION 5

- (Exam Topic 1)

A network administrator receives a call from the sales department requesting ports 20 and 21 be opened on the company's firewall to allow customers to retrieve a large file. Which of the following should the administrator perform BEFORE making the needed changes? (Choose two.)

- A. Document the reason for the request
- B. Scan the file for malware to protect the sales department's computers
- C. Follow the company's approval process for the implementation
- D. Install a TFTP server for the customers to use for the transfer
- E. Create a honeypot to store the file on for the customers to use
- F. Write the SLA for the sales department authorizing the change

Answer: AC

NEW QUESTION 6

- (Exam Topic 1)

A technician discovers that multiple switches require a major update. Which of the following policies should be followed?

- A. Change management policy
- B. Remote access policy
- C. Acceptable use policy
- D. Memorandum of understanding

Answer: A

NEW QUESTION 7

- (Exam Topic 1)

A network technician receives a call from a user in the accounting department stating that Internet connectivity has been lost after receiving a new workstation. No other users in accounting are reporting similar issues. The network technician is able to ping the machine from the accounting department's router, but is not able to ping the machine from the IT network. Which of the following is MOST likely the cause?

- A. Incorrect default gateway
- B. Duplicate IP address
- C. Misconfigured OSPF
- D. Improper VLAN assignment

Answer: A

NEW QUESTION 8

- (Exam Topic 1)

Which of the following are characteristics of jumbo frames? (Choose two.)

- A. Commonly used on SAN
- B. MTU size greater than 1500
- C. MTU size greater than 10000
- D. Commonly used on IaaS
- E. MTU size greater than 12000

Answer: AB

NEW QUESTION 9

- (Exam Topic 1)

A network engineer planning for wireless connectivity in large office building. Currently, the office building contains both legacy and newer devices. Which of the following wireless network routers should engineer select for the fastest throughput for all wireless devices in the office building?

- A. 802.11ac
- B. 802.11b
- C. 802.11g
- D. 802.11n

Answer: A

Explanation:

<https://www.forbes.com/forbes/welcome/?toURL=https://www.forbes.com/sites/gordonkelly/2014/12/30/802-11>

NEW QUESTION 10

- (Exam Topic 1)

Management has requested that services be available within 72 hours of disaster. Budget is a major concern. A contract is signed with a company that has plenty space, and the technician will have the option of putting infrastructure equipment in place. Which of the following BEST describes this business continuity strategy?

- A. Cold site
- B. Differentiate backup
- C. Hot site
- D. Incremental backup
- E. Warm site
- F. Full backup

Answer: A

NEW QUESTION 10

- (Exam Topic 1)

A technician needs to upgrade a SOHO wireless router's firmware. The technician resets the router to factory settings and installs the new firmware. The technician enters the DHCP information and sets the SSID. Which of the following configurations would provide the MOST protection from advance hackers?

- A. Disable the broadcasting of the SSID.
- B. Enable WPA2 authentication for all hosts.
- C. Use private addressing for the DHCP scope.
- D. Install unidirectional antennas.

Answer: B

NEW QUESTION 15

- (Exam Topic 1)

A forensic first responder arrives at the scene where an employee is suspected to have committed a computer-based crime. Which of the following should the first responder do FIRST?

- A. Document the scene
- B. Take pictures upon arrival
- C. Secure the area
- D. Implement chain of custody

Answer: C

NEW QUESTION 19

- (Exam Topic 1)

Which of the following storage network technologies inherently leverages block-level storage?

- A. NAS
- B. SAN
- C. FCoE
- D. iSCSI
- E. FTP

Answer: A

NEW QUESTION 22

- (Exam Topic 1)

Two buildings used to be connected by wireless bridge, but they are upgrading to fiber. Which of the following new devices would be required at the demarcation points?

- A. Wireless access point
- B. Router
- C. Media converter
- D. Firewall

Answer: B

NEW QUESTION 25

- (Exam Topic 1)

A network administrator would like to collect information from several networking devices using SNMP. Which of the following SNMP options should a network administrator use to ensure the data transferred is confidential?

- A. authpriv
- B. SHA
- C. MD5
- D. Authentication passphrase

Answer: A

NEW QUESTION 26

- (Exam Topic 1)

A network administrator frequently needs to assist users with troubleshooting network hardware remotely, but the users are non-technical and unfamiliar with network devices. Which of the following would BEST help the administrator and users during hands-on troubleshooting?

- A. Logical diagrams
- B. MDF documentation
- C. Equipment labeling
- D. Standard operating procedures

Answer: D

NEW QUESTION 30

- (Exam Topic 1)

A network technician has discovered a rogue access point under an empty cubicle desk. Which of the following should the technician perform to ensure another cannot be placed on the network?

- A. Disable unused ports on switches
- B. Enable DHCP guard to detect rogue servers
- C. Configure WPA2 on all access points
- D. Use TACACS+ authentication

Answer: B

NEW QUESTION 33

- (Exam Topic 1)

A Content filter is set to analyze XML and JSON that users access from the internet. At which of the following layers is this analysis taking place?

- A. 1
- B. 3
- C. 5
- D. 7
- E. 6

Answer: E

NEW QUESTION 37

- (Exam Topic 1)

A network technician is working on a new switch implementation to expand the network. Which of the following is the BEST option to ensure the implementation goes according to business requirements?

- A. AUP
- B. NDA
- C. SOP
- D. SLA

Answer: C

NEW QUESTION 42

- (Exam Topic 1)

A network technician is working on a proposal for email migration from an on-premises email system to a vendor-hosted email in the cloud. The technician needs to explain to management what type of cloud model will be utilized with the cloud-hosted email. Which of the following cloud models should the technician identify in the proposal?

- A. IaaS
- B. PaaS
- C. SaaS
- D. MaaS

Answer: C

NEW QUESTION 45

- (Exam Topic 1)

A network technician is deploying mobile phones for a company's sales staff. Salespeople frequently travel nationally and internationally to meet with clients, and often have to roam or switch cellular providers. Which of the following standards is the BEST option to fit the requirements?

- A. GSM
- B. TDM
- C. CDMA
- D. PSTN
- E. MIMO

Answer: A

NEW QUESTION 49

- (Exam Topic 1)

Which of the following physical security devices is used to detect unauthorized server room access?

- A. Access badge
- B. Biometrics
- C. Smart card
- D. Video surveillance

Answer: D

NEW QUESTION 52

- (Exam Topic 1)

A technician needs to order cable that meets 10GBaseT and safety requirements for an installation between a drop ceiling and a standard ceiling. Which of the following should the technician order to ensure compliance with the requirements?

- A. PVC Cat 5
- B. Plenum Cat 5e
- C. Plenum Cat 6a
- D. PVC Cat 7

Answer: C

Explanation:

10GBaseT A 10 GbE standard designed to run on Cat 6a UTP cabling. Maximum cable length of 100 m.

NEW QUESTION 56

- (Exam Topic 1)

The server team has just installed an application across three different servers. They are asking that all requests to the application are spread evenly across the three servers. Which of the following should the network team implement to fulfil the request?

- A. Proxy server
- B. UTM appliance
- C. Content filter
- D. Load balancer

Answer: D

NEW QUESTION 61

- (Exam Topic 1)

Under which of the following layers of the OSI do ATM cells operate?

- A. Data link
- B. Network

- C. Session
- D. Transport
- E. Presentation

Answer: A

NEW QUESTION 63

- (Exam Topic 1)

A server in a LAN was configured to act as a gateway between all company computers and an external network. Which of the following network devices offers the ability to increase both performance and security?

- A. Load balancer
- B. IDS
- C. Proxy server
- D. Wireless controller

Answer: C

NEW QUESTION 67

- (Exam Topic 1)

A technician has installed a Linux server in the tax office. The server can access most of the resources on the network, but it cannot connect to another server that has a share for backup. The technician learns that the target server is on a different subnet. Which of the following tools should the technician use to ensure the Linux server can reach the backup location?

- A. netstat
- B. traceroute
- C. route
- D. dig
- E. ifconfig

Answer: B

NEW QUESTION 70

- (Exam Topic 1)

A technician is setting up a wireless access point in a coffee shop. The shop is not concerned with security but only wants to allow customers to have access. Which of the following configurations should the technician deploy?

- A. Use a pre-shared key.
- B. Set up EAP.
- C. Configure RADIUS.
- D. Configure MAC filtering.

Answer: A

NEW QUESTION 74

- (Exam Topic 1)

A network technician notices the site-to-site VPN and Internet connection have not come back up at a branch office after a recent power outage. Which of the following is an out-of-band method the technician would MOST likely utilize to check the branch office's router status?

- A. Use a modem to console into the router
- B. Walk a user through troubleshooting the connection
- C. Travel to the branch office
- D. Hire a contractor to go on-site

Answer: A

NEW QUESTION 77

- (Exam Topic 1)

A technician is responsible for configuring a new firewall. The hardware team has already installed, powered, and connected the system. Which of the following types of documentation should the technician utilize to complete the task?

- A. Rack diagram
- B. IDF/MDF documentation
- C. Network performance baseline
- D. Logical and physical diagrams

Answer: D

NEW QUESTION 79

- (Exam Topic 1)

A company finds that many desktops are being reported as missing or lost. Which of the following would BEST assist in recovering these devices?

- A. Asset tracking tags
- B. Motion detectors
- C. Security guards
- D. Computer locks

Answer: D

NEW QUESTION 81

- (Exam Topic 1)

The security manager reports that individual systems involved in policy or security violations or incidents cannot be located quickly. The security manager notices the hostnames all appear to be randomly generated characters. Which of the following would BEST assist the security manager identifying systems involved in security incidents?

- A. Enforce port security to require system authentication
- B. Implement a standardized UNC
- C. Label existing systems with current hostnames
- D. Forward the DHCP logs to the security manager every day

Answer: B

NEW QUESTION 82

- (Exam Topic 1)

A network engineer arrives at work and discovers that many users are having problems when attempting to connect to the company network shared drives. The network operations center (NOC) technician just completed server upgrades the night before. To which of the following documents should the NOC technician refer to determine what potentially caused the connectivity problem?

- A. Network maps
- B. Cable management
- C. Release notes
- D. Change management

Answer: D

NEW QUESTION 87

- (Exam Topic 1)

A technician is configuring a printer for a client. The technician connects the printer to the network, but is unsure how to determine its switchport. Which of the following should the technician do FIRST to locate the switchport?

- A. Perform a DNS lookup on the server.
- B. Set up an SSH session to the desktop.
- C. Reference the ARP table in the router.
- D. Configure port security on the switch.

Answer: C

NEW QUESTION 90

- (Exam Topic 1)

The process of attempting to exploit a weakness in a network after being given permission by the company is known as:

- A. penetration testing
- B. vulnerability scanning
- C. reconnaissance
- D. social engineering

Answer: A

NEW QUESTION 93

- (Exam Topic 1)

An employee wishes to use a personal cell phone for work-related purposes, including storage of sensitive company data, during long business trips. Which of the following is needed to protect BOTH the employee and the company?

- A. An NDA ensuring work data stored on the personal phone remains confidential
- B. An AUP covering how a personal phone may be used for work matters
- C. A consent to monitoring policy covering company audits of the personal phone
- D. Real-time remote monitoring of the phone's activity and usage

Answer: D

NEW QUESTION 95

- (Exam Topic 1)

Which of the following is a reason why a business may be hesitant to move sensitive data to a SaaS cloud service?

- A. Decreased performance of internal network
- B. Loss of full control over data resources
- C. Increased malware exposure
- D. Incompatibility with the current network

Answer: B

NEW QUESTION 98

- (Exam Topic 1)

A recently constructed building makes use of glass and natural light. Users in the building are reporting poor cellular connectivity and speeds. Which of the following is MOST likely the cause?

- A. Absorption
- B. Channel overlap
- C. Reflection
- D. Frequency mismatch

Answer: C

NEW QUESTION 102

- (Exam Topic 1)

Which of the following BEST describes the differences between VLAN hopping and session hijacking?

- A. VLAN hopping involves the unauthorized transition from one VLAN to another to gain additional access
- B. Session hijacking involves overriding a user's web connection to execute commands
- C. VLAN hopping is a brute force attack executed to gain additional access
- D. Session hijacking involves physically disrupting a network connection
- E. VLAN hopping involves overriding a user network connection to execute malicious command
- F. Session hijacking involves compromising a host to elevate privileges
- G. VLAN hopping is the act of exploiting poor VLAN tagging
- H. Session hijacking is a web-based attack aimed at privilege escalation

Answer: A

NEW QUESTION 105

- (Exam Topic 1)

A small business developed an in-house application that is very sensitive to network latency when communicating between servers. Due to a lack of funds, the business had to build its own network for workstations and servers. Now a network administrator must redesign the network due to performance issues with the application. Which of the following would be the MOST cost effective for the administrator to recommend?

- A. Create Ethernet VLANs
- B. Disable autonegotiation on the servers
- C. Install 10Gb Ethernet NICs in the servers
- D. Install Fibre Channel for the server network

Answer: C

NEW QUESTION 106

- (Exam Topic 1)

Which of the following is recognized as the SMALLEST network type?

- A. SAN
- B. CAN
- C. PAN
- D. LAN

Answer: C

Explanation:

PAN is definitively the smallest type of network you can currently use and the name comes from Personal Area Network. You've probably used this in the last week without even knowing it.

<http://compinfoapro.com/types-of-network-pan-man-wlan-san-can-dan/>

NEW QUESTION 107

- (Exam Topic 1)

A small town is attempting to attract tourists who visit larger nearby cities. A network engineer is asked to implement a network encompassing the five-block town center and nearby businesses. The inclusion of smartphones and portable devices is crucial to the plan. Which of the following is the network engineer being asked to implement?

- A. LAN
- B. PAN
- C. MAN
- D. WAN

Answer: C

NEW QUESTION 110

- (Exam Topic 1)

An analyst is developing a proof of concept of a wireless-based attack as part of a penetration test against an organization's network. As part of the attack, the analyst launches a fake access point matching the SSID of the organization's guest access network. When a user connects to the fake access point, the analyst allows the traffic to flow through the access point to the legitimate site while the data traversing the network is logged for latest analysis and exploitation. Which of the following attacks has the analyst successfully performed in this scenario?

- A. Bluesnarfing
- B. Session hijacking
- C. MAC spoofing

- D. VLAN hopping
- E. Man-in-the-middle

Answer: E

NEW QUESTION 112

- (Exam Topic 1)

A technician wants to prevent an unauthorized host from connecting to the network via Ethernet. Which of the following is a Layer 2 access control the technician should implement?

- A. Access control lists
- B. Captive portal
- C. WPA2
- D. Port security

Answer: D

NEW QUESTION 117

- (Exam Topic 1)

As part of a transition from a static to a dynamic routing protocol on an organization's internal network, the routing protocol must support IPv4 and VLSM. Based on those requirements, which of the following should the network administrator use? (Choose two.)

- A. OSPF
- B. IS-IS
- C. RIPv1
- D. BGP
- E. VRRP

Answer: AB

NEW QUESTION 119

- (Exam Topic 1)

Which of the following are DNS record type? (Select THREE).

- A. CNAME
- B. NTP
- C. PTR
- D. LDAP
- E. DHCP
- F. TTL
- G. SRV
- H. SSH

Answer: ACG

NEW QUESTION 122

- (Exam Topic 1)

Which of the following is used to classify network data for the purpose of providing QoS?

- A. STP
- B. VLANs
- C. SIP
- D. DSCP

Answer: D

NEW QUESTION 125

- (Exam Topic 1)

Users are reporting issues with slow connection speeds and a loss of connectivity on the newly installed wireless network. The issues are intermittent but seem to occur most often around midday. Which of the following is the MOST likely cause?

- A. There is interference from small appliances
- B. The signal coverage area is too small
- C. Not enough DHCP addresses have been allotted
- D. The DNS cache on the users' computers has become corrupt

Answer: C

NEW QUESTION 128

- (Exam Topic 1)

A telecommunications provider has just deployed a new OC-12 circuit at a customer site. While the circuit showed no errors from the provider end to the customer's demarcation point, a network administrator is trying to determine the cause of dropped packets and errors on the circuit. Which of the following should the network administrator do to rule out any problems at Layer 1? (Choose two.)

- A. Use a loopback at the demark and router, and check for a link light
- B. Use an OTDR to validate the cable integrity
- C. Use a pinout tester to validate the cable integrity

- D. Use a multimeter to validate the cable integrity
- E. Check for any devices that may be causing EMI on the cable
- F. Clean the cables to be sure they are free of dust and debris

Answer: AB

NEW QUESTION 130

- (Exam Topic 1)

A network technician is installing a new SOHO branch office that requires the use of a DOCSIS-compatible. The modem needs to be connected to the ISP's network at the demarc. Which of the following cable type should be used?

- A. UTP
- B. Multimode
- C. Coaxial
- D. Serial

Answer: C

NEW QUESTION 132

- (Exam Topic 1)

A customer is reporting difficulty connecting some devices after replacing a wireless router with a new wireless 802.11ac router. The SSID, encryption and password are the same as the previous router. A technician goes on-site and notices the devices that are no longer connecting appear to be several years ago. Which of the following is MOST likely the problem?

- A. the password needs to be re-entered.
- B. there is a security type mismatch.
- C. there is insufficient antenna power.
- D. there is a frequency mismatch.
- E. the channel has changed.

Answer: D

NEW QUESTION 135

- (Exam Topic 1)

A switch has detected duplicate broadcast messages sourced from a second port. The broadcasts continue to be transmitted and duplicated until the amount of traffic causes severe performance issues. Which of the following should be configured to prevent this behavior?

- A. BPDU guard
- B. DHCP snooping
- C. ARP protection
- D. Spanning tree

Answer: D

NEW QUESTION 136

- (Exam Topic 1)

A network administrator needs to transmit traffic to geographically diverse sites to improve performance. Which of the following devices would BEST direct traffic to the remote sites?

- A. Hub
- B. Bridge
- C. Switch
- D. Router

Answer: D

NEW QUESTION 140

- (Exam Topic 1)

A technician is trying to configure a previously owned WAP. The technician successfully logs into the administrative console and attempts to input the IP address on the WAP. However, the WAP is not accepting the command. Which of the following is causing the problem?

- A. The WAP antenna is damaged
- B. The WAP transmitter light is dim
- C. The terminal emulation software is misconfigured
- D. The LWAPP image is installed on the WAP

Answer: C

NEW QUESTION 141

- (Exam Topic 1)

A technician replaces a failed router with a spare that has been in inventory for some time. After attempting to enable HTTPS on the spare router, the technician discovers the feature is unavailable. The support office was able to connect to the previous router. Which of the following actions should the technician perform to enable HTTPS access for the support team?

- A. Reboot the router
- B. Enable HTTP on the router
- C. Update the firmware of the spare router

D. Perform a factory reset on the router

Answer: C

NEW QUESTION 143

- (Exam Topic 1)

A technician has been alerted of incoming HTTP traffic on the LAN segment that should not contain any web server's. The technician has the IP address of the destination host and wants to determine if the socket for HTTP is open. Which of the following should the technician perform?

- A. Baseline assessment
- B. packet analysis
- C. portscan
- D. Patch-level assessment.

Answer: C

NEW QUESTION 147

- (Exam Topic 1)

A network technician is troubleshooting an end-user connectivity problem. The network technician goes to the appropriate IDF but is unable to identify the appropriate cable due to poor labeling. Which of the following should the network technician use to help identify the appropriate cable?

- A. Tone generator
- B. Multimeter
- C. OTDR
- D. Loopback adapter

Answer: A

NEW QUESTION 148

- (Exam Topic 1)

An engineer is reviewing the implementation requirements for an upcoming project. The basic requirements identified by the customer include the following:

- ▶ WLAN architecture supporting speeds in excess of 150 Mbps
- ▶ Clientless remote network access
- ▶ Port-based network access control

Which of the following solution sets properly addresses all of the identified requirements?

- A. 802.11a, IPSec VPN, 802.1x
- B. 802.11ac, MPLS, 802.3
- C. 802.11b, PPTP, 802.1x
- D. 802.11g, MS-CHAP, 802.16
- E. 802.11n, SSL-VPN, 802.1x

Answer: E

NEW QUESTION 152

- (Exam Topic 1)

A network engineer is designing a new network for a remote site. The remote site consists of ten desktop computers, ten VoIP phones, and two network printers. In addition, two of the desktop computers at the remote site will be used by managers who should be on a separate network from the other eight computers. Which of the following represents the BEST configuration for the remote site?

- A. One router connected to one 24-port switch configured with three VLANs: one for the manager's computers and printer, one for the other computers and printer, and one for the VoIP phones
- B. Two routers with each router connected to a 12-port switch, with a firewall connected to the switch connected to the manager's desktop computers, VoIP phones, and printer
- C. One router connected to one 12-port switch configured for the manager's computers, phones, and printer, and one 12-port switch configured for the other computers, VoIP phones, and printer
- D. One router connected to one 24-port switch configured with two VLANs: one for the manager's computers, VoIP phones, and printer, and one for the other computers, VoIP phones, and printer

Answer: A

NEW QUESTION 154

- (Exam Topic 1)

A technician is diagnosing an issue with a new T1 connection. The router is configured, the cable is connected, but the T1 is down. To verify the configuration of the router, which of the following tools should the technician use?

- A. Loopback adapter
- B. Cable tester
- C. Tone generator
- D. Multimeter

Answer: A

NEW QUESTION 158

- (Exam Topic 1)

Which of the following devices, if implemented, would result in decreased administration time of an 802.11 network running centralized authentication services?

(Choose two.)

- A. VPN concentrator
- B. Proxy server
- C. Wireless controller
- D. RADIUS server
- E. Multilayer switch

Answer: CD

NEW QUESTION 159

- (Exam Topic 1)

Users have been experiencing slow network response times, and management has asked the network technician to provide evidence of network improvement. After optimizing the network, which of the following would be required?

- A. IDF/MDF documentation
- B. Change management
- C. Performance baseline
- D. Physical diagram

Answer: C

NEW QUESTION 161

- (Exam Topic 1)

A network administrator configures an email server to use secure protocols. When the upgrade is completed, which of the following ports on the firewall should be configured to allow for connectivity? (Choose three.)

- A. TCP 25
- B. TCP 110
- C. TCP 143
- D. TCP 389
- E. TCP 587
- F. TCP 993
- G. TCP 995

Answer: EFG

NEW QUESTION 162

- (Exam Topic 1)

Which of the following WAN technologies is MOST preferred when developing a VoIP system with 23 concurrent channels?

- A. DSL
- B. POTS
- C. T1
- D. DOCSIS

Answer: C

NEW QUESTION 165

- (Exam Topic 1)

A network engineer wants to segment the network into multiple broadcast domains. Which of the following devices would allow for communication between the segments?

- A. Layer 2 switch
- B. Layer 3 switch
- C. Bridge
- D. Load balancer

Answer: B

NEW QUESTION 167

- (Exam Topic 1)

Which of the following concepts would BEST describe when a company chooses to use a third-party vendor to host and administer critical application?

- A. SaaS
- B. IaaS
- C. PaaS
- D. CASB

Answer: C

NEW QUESTION 168

- (Exam Topic 1)

A technician notices clients are receiving a 169.254.x.x IP address following the upgrade of a server. Which of the following ports should the technician check on the local server firewall?

- A. ports 20 and 21

- B. ports 67 and 68
- C. ports 80 and 443
- D. port 123 and 8080

Answer: B

NEW QUESTION 173

- (Exam Topic 1)

Which of the following physical security controls is MOST likely to be susceptible to a false positive?

- A. Identification card
- B. Biometric device
- C. Proximity reader
- D. Video camera

Answer: C

NEW QUESTION 175

- (Exam Topic 1)

Which of the following will listen on the line to ensure there is no traffic transmitting and implement a back-off timer if a collision occurs?

- A. CSMA/CD
- B. CSMA/CA
- C. MPLS
- D. OSPF

Answer: A

NEW QUESTION 179

- (Exam Topic 1)

A network technician is building a network for a small office. The office currently has cable TV and now requires access to the Internet without adding any cabling other than what is already in place. Which of the following solutions should the technician install to meet these requirements?

- A. DOCSIS modem
- B. Wireless router
- C. DSL modem
- D. Access point

Answer: A

NEW QUESTION 181

- (Exam Topic 1)

A web application is unable to authenticate customers so they can access their bills. The server administrator has tested the LDAP query but is not receiving results. Which of the following is the NEXT step the server administrator should take to correct the problem?

- A. Check port 636 to see if it being blocked.
- B. Change service port 636 to port 389.
- C. Restart the web server.
- D. Verify the browser is using port 443.

Answer: A

NEW QUESTION 183

- (Exam Topic 2)

Which of the following uses port 53 by default?

- A. RDP
- B. QoS
- C. DHCP
- D. DNS

Answer: D

NEW QUESTION 185

- (Exam Topic 2)

The software that allows a machine to run multiple operating systems at once is called the:

- A. Server manager
- B. Hypervisor
- C. Boot loader
- D. Partition manager

Answer: B

NEW QUESTION 189

- (Exam Topic 2)

Which of the following connector types would Sandy, a network technician, use to connect a serial cable?

- A. RJ-11
- B. BNC
- C. LC
- D. DB-9

Answer: D

NEW QUESTION 190

- (Exam Topic 2)

Jeff, an administrator, has just finished installing a new switch and connected two servers with IPs of 192.168.105.20 and .30. The servers are able to communicate with each other, but are unable to reach the Internet. Jeff sees the following information in the switch configuration:

interface VLAN 105

IP address 192.168.105.5 255.255.255.0

Jeff is able to ping the router at 192.168.105.1 from the switch. Which of the following is the MOST likely cause of the problem?

- A. The subnet mask is incorrect.
- B. A routing loop has occurred.
- C. Jeff used a crossover cable to connect the switch to the gateway.
- D. The server is missing default-gateway information.

Answer: D

NEW QUESTION 192

- (Exam Topic 2)

Which of the following cable types have a rated MAXIMUM bandwidth of 100Mbps?

- A. CAT3
- B. CAT5
- C. CAT5e
- D. CAT6

Answer: B

NEW QUESTION 196

- (Exam Topic 2)

Which of the following default ports would need to be open on a firewall to allow remote desktop access?

- A. 143
- B. 443
- C. 3389
- D. 8080

Answer: C

NEW QUESTION 201

- (Exam Topic 2)

Use of group accounts should be minimized to ensure which of the following?

- A. Password security
- B. Regular auditing
- C. Baseline management
- D. Individual accountability

Answer: D

NEW QUESTION 203

- (Exam Topic 2)

Which of the following devices should be installed on a network to monitor the presence of and actively defend against attacks?

- A. An IPS
- B. A protocol analyzer
- C. A traffic shaper
- D. An IDS

Answer: A

NEW QUESTION 205

- (Exam Topic 2)

Which of the following are network topologies? (Select TWO).

- A. Ethernet
- B. Duplex
- C. Star
- D. Circular

E. Bus

Answer: CE

NEW QUESTION 206

- (Exam Topic 2)

Which of the following cables will MOST likely be used to connect to a satellite dish?

- A. RG-6
- B. CAT5e
- C. Fiber
- D. CAT6

Answer: A

NEW QUESTION 211

- (Exam Topic 2)

Which of the following provides the MOST protection against zero day attacks via email attachments?

- A. Anti-spam
- B. Anti-virus
- C. Host-based firewalls
- D. Patch management

Answer: A

NEW QUESTION 215

- (Exam Topic 2)

Which of the following cables has the MOST twists per inch?

- A. CAT3
- B. CAT5
- C. CAY5e
- D. CAT6

Answer: D

NEW QUESTION 216

- (Exam Topic 2)

A computer on VLAN 10 with the IP address of 192.168.1.45/27 cannot ping a computer on VLAN 20 with the IP address of 192.168.1.65/27. Which configuration change will allow the PING to be successful?

- A. Replace the router with a Layer 2 switch that supports VLANs
- B. Change VLAN 20 computers Default Gateway to 192.168.1.127/27
- C. Change VLAN 10 computers Default Gateway to 192.168.1.32/27
- D. AllowICMP to pass through the Router

Answer: D

NEW QUESTION 219

- (Exam Topic 2)

Which of the following is used to assign an IP address to a device?

- A. DHCP
- B. NTP
- C. DNS
- D. RADIUS

Answer: A

NEW QUESTION 224

- (Exam Topic 2)

Which of the following defines an IP address that is NOT routed on the Internet?

- A. Multicast
- B. Public
- C. Private
- D. Classful

Answer: C

NEW QUESTION 226

- (Exam Topic 2)

Which of the following protocols are used to connect devices in a secure manner? (Select TWO).

- A. TELNET
- B. SSH
- C. RDP
- D. HTTP
- E. DNS
- F. FTP

Answer: BC

NEW QUESTION 230

- (Exam Topic 2)

Matt, an administrator, notices a flood fragmented packet and retransmits from an email server. After disabling the TCP offload setting on the NIC, Matt sees normal traffic with packets flowing in sequence again. Which of the following utilities was he MOST likely using to view this issue?

- A. Spam filter
- B. Protocol analyzer
- C. Web application firewall
- D. Load balancer

Answer: B

NEW QUESTION 231

- (Exam Topic 2)

Which of the following defines when Pete, an attacker, attempts to monitor wireless traffic in order to perform malicious activities?

- A. XSS
- B. SQL injection
- C. Directory traversal
- D. Packet sniffing

Answer: D

NEW QUESTION 236

- (Exam Topic 2)

Which of the following MUST be used when securing a VoIP network consisting of private IP addresses?

- A. IPS
- B. Application layer firewall
- C. IDS
- D. An unmanaged switch

Answer: B

NEW QUESTION 238

- (Exam Topic 2)

After plugging a cable into a computer, a user reports there is no network access. Which of the following tools would the technician MOST likely check to verify that the cable was crimped correctly?

- A. Punch down tool
- B. Cable certifier
- C. Loopback plug
- D. Toner probe

Answer: B

NEW QUESTION 241

- (Exam Topic 2)

Which of the following is the MOST economical way for Sandy, a technician, to implement 10- Gigabit Ethernet at a datacenter?

- A. 10GBaseLR
- B. 10GBaseSR
- C. 10GBaseX
- D. 10GBaseT

Answer: D

NEW QUESTION 246

- (Exam Topic 2)

An organization recently installed a firewall on the network. Employees must be able to send and receive email from a POP3 server. In which of the following ways should the firewall be configured? (Select TWO).

- A. Allow TCP port 23
- B. Allow TCP port 25
- C. Allow TCP port 110
- D. Allow UDP port 25
- E. Allow UDP port 110

Answer: BC

NEW QUESTION 250

- (Exam Topic 2)

An organization has installed a new firewall. Users need to have access to remote websites and must be able to use SSH to retrieve files from remote locations. Which of the following actions should be taken on the new firewall? (Select TWO).

- A. Allow UDP port 21 outbound
- B. Allow UDP port 22 outbound
- C. Allow UDP port 80 outbound
- D. Allow TCP port 21 outbound
- E. Allow TCP port 22 outbound
- F. Allow TCP port 80 outbound

Answer: EF

NEW QUESTION 251

- (Exam Topic 2)

Which of the following is indicative of an FTP bounce?

- A. Arbitrary IP address
- B. Reverse DNS lookups
- C. Same Port Number
- D. File Transfer Success

Answer: A

NEW QUESTION 252

- (Exam Topic 2)

Kim, a user, took a laptop on vacation and made changes to the configuration in order to use the device at the hotel. She can reach the Internet, but cannot access any internal network resources.

Which of the following is the MOST likely reason?

- A. Incorrect DNS
- B. Incorrect subnet mask
- C. Duplicate IP address
- D. Incorrect SSID

Answer: A

NEW QUESTION 255

- (Exam Topic 2)

A pest control contractor attempts to gain access to the datacenter; however, the manager on duty notes that a pest control inspection was not on the schedule.

Which of the following attacks is in progress?

- A. Phishing
- B. Social engineering
- C. Man-in-the-middle
- D. Smurfing

Answer: B

NEW QUESTION 258

- (Exam Topic 2)

Which of the following is used to provide hot standby capabilities using paired routers?

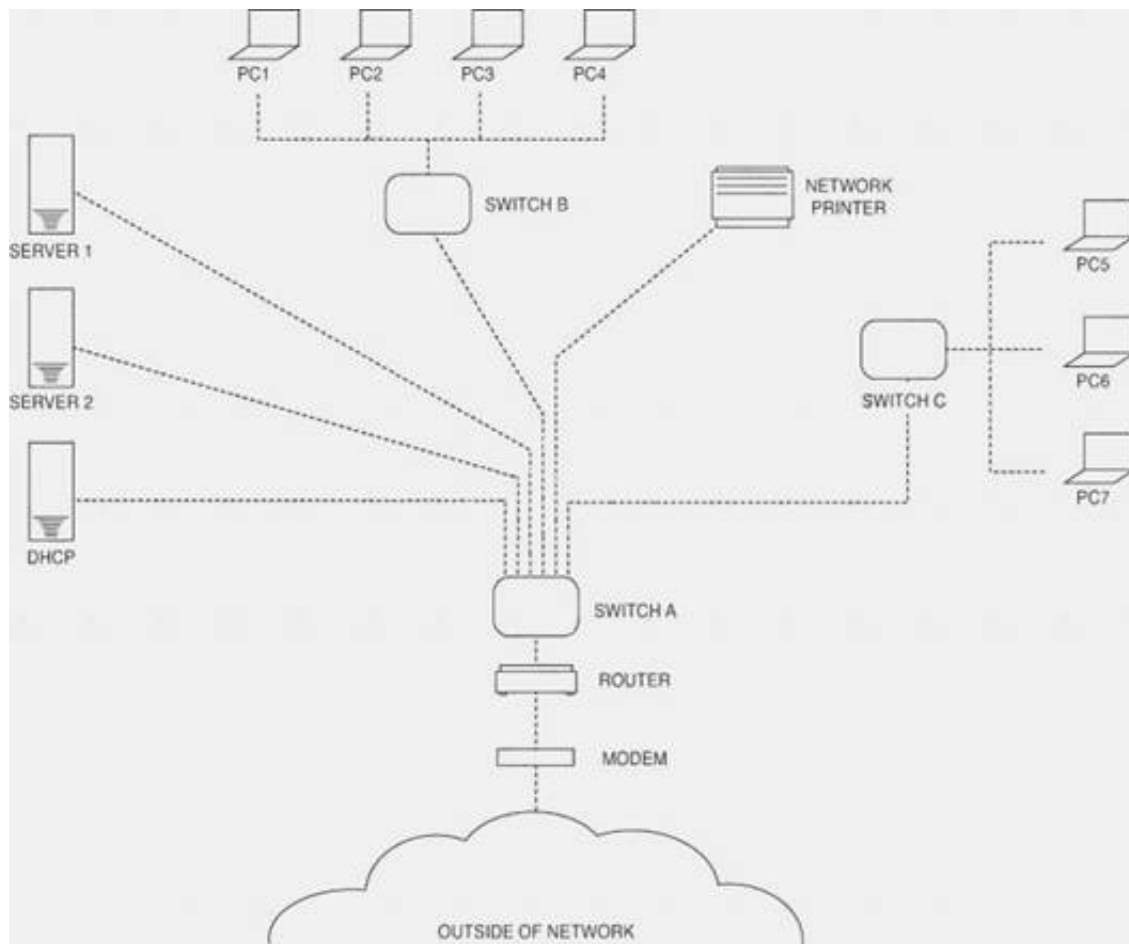
- A. CARP
- B. L2TP
- C. PPTP
- D. ISAKMP

Answer: A

NEW QUESTION 260

- (Exam Topic 2)

Please refer to the attached exhibit. Which of the following types of configuration management documentation is represented?



- A. Network security policy
- B. Network baseline
- C. Logical network diagram
- D. Wiring schematic

Answer: C

NEW QUESTION 263

- (Exam Topic 2)

Which of the following default services uses TCP/UDP port 88?

- A. LDAP
- B. IGMP
- C. HTTP
- D. Kerberos

Answer: D

NEW QUESTION 264

- (Exam Topic 2)

Which of the following subnet masks would allow for 192.168.0.3 and 192.168.0.240 to be in the same subnet?

- A. 255.255.255.0
- B. 255 255.255.128
- C. 255.255.255.192
- D. 255.255.255.248

Answer: A

NEW QUESTION 266

- (Exam Topic 2)

Which of the following WAP security features offers the STRONGEST encryption?

- A. WPA
- B. WPA2
- C. WEP
- D. Hidden SSID

Answer: B

NEW QUESTION 269

- (Exam Topic 2)

A user is unable to print to a network printer. Which of following is the FIRST step that a technician should take to troubleshoot the issue?

- A. Identify the problem.
- B. Establish a plan of action to resolve the problem.
- C. Establish a theory of probable cause.
- D. Implement preventative measures.

Answer: A

NEW QUESTION 272

- (Exam Topic 2)

Which of the following ports does DHCP use? (Select TWO).

- A. 22
- B. 23
- C. 67
- D. 68
- E. 69

Answer: CD

NEW QUESTION 273

- (Exam Topic 2)

Which of the following is based ENTIRELY on using ICMP packets?

- A. Social engineering
- B. NMAP
- C. Buffer overflow attack
- D. Smurf attack

Answer: D

NEW QUESTION 277

- (Exam Topic 2)

A technician, Joe, visits a site that has reported a network down emergency. He immediately reboots the switches and the router since the network is down. Which of the following network troubleshooting methodology steps should Joe have performed FIRST?

- A. Determine if anything has changed
- B. Once a theory is confirmed determine the next step is to resolve the problem
- C. Implement the solution or escalate as necessary
- D. Question the obvious

Answer: A

NEW QUESTION 279

- (Exam Topic 2)

Which of the following ports should be allowed through a firewall to allow DNS resolution to occur to an outside DNS server?

- A. 20
- B. 53
- C. 80
- D. 3389

Answer: B

NEW QUESTION 280

- (Exam Topic 2)

Which of the following could be used to stop unknown threats?

- A. DMZ
- B. Signature based IPS
- C. Behavior based IPS
- D. Honey pots

Answer: C

NEW QUESTION 282

- (Exam Topic 3)

A national cable company providing TV, telephone, and Internet service to home users over its IP network, has been tracking a large increase of network bandwidth due to P2P file sharing. Which of the following should the company deploy to ensure excellent TV and telephone service?

- A. QoS
- B. Load balancing
- C. High availability
- D. Fiber optics

Answer: A

NEW QUESTION 284

- (Exam Topic 3)

Jeff, a business owner, has discovered that several of the nearby businesses have wireless networks. Jeff wants to implement a unique wireless network inside the business. Which of the following should be configured on the wireless access point to reduce interference from the other wireless networks?

- A. PPPoE authentication
- B. MAC filtering

- C. WPA encryption
- D. Wireless channel

Answer: D

NEW QUESTION 288

- (Exam Topic 3)

Which of the following protocols is used to securely connect to a multi-layer switch?

- A. HTTP
- B. SMTP
- C. SSH
- D. Telnet

Answer: C

NEW QUESTION 291

- (Exam Topic 3)

A company is experiencing accessibility issues reaching services on a cloud-based system. Which of the following monitoring tools should be used to locate possible outages?

- A. Network analyzer
- B. Packet analyzer
- C. Protocol analyzer
- D. Network sniffer

Answer: A

Explanation:

A network analyzer is a useful tool, helping you do things like track traffic and malicious usage on the network.

NEW QUESTION 294

- (Exam Topic 3)

A VoIP system will require 23 concurrent voice channels and signaling channel. Which of the following types of service would provides the BEST connectivity to the PSTN?

- A. PRI
- B. BRI
- C. E1/E3
- D. DSL

Answer: A

NEW QUESTION 299

- (Exam Topic 3)

When Jeff, a technician, is troubleshooting a problem, which of the following is the NEXT step after verifying full system functionality?

- A. Establish a plan of action to resolve the problem and identify potential effects.
- B. Implement the solution.
- C. Establish a theory of probable cause.
- D. Document findings, actions, and outcomes.

Answer: D

NEW QUESTION 302

- (Exam Topic 3)

A network technician is installing a simple SOHO router with wireless functionality. Which of the following wireless encryption standards would be BEST suited for the HIGHEST level of security?

- A. WPA2
- B. WPA
- C. WEP64
- D. WEP128

Answer: A

NEW QUESTION 306

- (Exam Topic 3)

Which of the following is an example of two factor authentication?

- A. Password, device certificate and PIN
- B. SSL web server certificate and password
- C. User password and administrator password
- D. Password and hardware token OTP

Answer: D

NEW QUESTION 308

- (Exam Topic 3)

Which of the following layers of the OSI model is between the Data Link and Transport layers?

- A. Application
- B. Session
- C. Network
- D. Physical

Answer: C

NEW QUESTION 311

- (Exam Topic 3)

Which of the following is the correct representation of an IPv6 address?

- A. ::
- B. 0:0:0:0:0:0:0:1
- C. 1:2:3:4:AB:CD:EF
- D. 2001::4860:800f::

Answer: A

NEW QUESTION 315

- (Exam Topic 3)

Which of the following cloud infrastructure designs includes on premise servers utilizing a centralized syslog server that is hosted at a third party organization for review?

- A. Hybrid
- B. Public
- C. Community
- D. Private

Answer: A

NEW QUESTION 316

- (Exam Topic 3)

Which of the following methods limits access to a network based on characteristics of the network card?

- A. IP filtering
- B. MAC filtering
- C. Port filtering
- D. Encryption

Answer: B

NEW QUESTION 319

- (Exam Topic 3)

A technician needs to verify an Ethernet run is functioning properly. Which of the following tools should be used?

- A. Protocol analyzer
- B. Crimper
- C. Cable tester
- D. Punch down tool

Answer: C

NEW QUESTION 324

- (Exam Topic 3)

A user is unable to connect to a server in another building. A technician is troubleshooting the issue and determines the following:

- 1) Client PC 1 has an IP address of 192.168.10.25/25
- 2) PC 1 can successfully ping its gateway of 192.168.10.1/25 which is an interface of router A
- 3) Server A is named 'BLDGBFILESVR01' and has an IP address of 192.168.10.145/25
- 4) PC 2 with an IP address of 192.168.10.200/25 can successfully ping server A

However, when PC 1 pings server A, it receives a destination host unreachable response. Which of the following is the MOST likely cause?

- A. Link from router A to PC 1 are on different subnets
- B. Link from router A to server A is down
- C. Link from PC 1 to router A has duplex issues
- D. Link from server A to PC 2 is down

Answer: A

NEW QUESTION 328

- (Exam Topic 3)

An administrator has received a recommendation against deploying WEP as a wireless encryption protection scheme. Which of the following is MOST likely the reason?

- A. WEP's IV is too small.
- B. WEP uses RC4 which is easily accessible and not secure.
- C. WEP uses plain text.
- D. WEP is not well supported.

Answer: A

NEW QUESTION 333

- (Exam Topic 3)

Lisa, an administrator, has set up an 802.11n wireless network. Users with 802.11n laptops have reported that speeds are slow. After testing, Lisa determines that users max out at 802.11g speeds. Which of the following would MOST likely fix this issue?

- A. Enable wireless multimedia (WMM) for QoS
- B. Use the 40MHz channels in the 2.4GHz band
- C. Enable access point antenna isolation
- D. Limit the clients to 802.11g compatible laptops

Answer: A

NEW QUESTION 336

- (Exam Topic 3)

Zach, a network technician, is unable to remotely manage or ping certain layer 2 switches. To manage those devices remotely, which of the following will MOST likely need to be configured?

- A. IP address on the native VLAN interface
- B. Port security
- C. Port forwarding
- D. IP address on the fiber interface

Answer: A

NEW QUESTION 340

- (Exam Topic 3)

Which of the following protocols are used for accessing a command line terminal session for management purposes? (Select TWO).

- A. Telnet
- B. FTP
- C. SNMP
- D. SSH
- E. RDP

Answer: AD

NEW QUESTION 344

- (Exam Topic 3)

An analog POTS voice line is no longer working and Kim, the technician, is tasked to verify if a dial tone is present at the IDF. Which of the following tools would be used?

- A. Protocol analyzer
- B. Butt set
- C. OTDR
- D. Toner probe

Answer: B

NEW QUESTION 346

- (Exam Topic 3)

A network technician is troubleshooting intermittent issues with VoIP call quality. A throughput tester can help assess the functionality of which of the following?

- A. LLDP
- B. VLAN tagging
- C. QoS
- D. SIP trunking

Answer: C

NEW QUESTION 349

- (Exam Topic 3)

Kim, the client, has requested a cost-effective network solution to accommodate the ability to reconfigure the office space as needed. Which networking solution would provide the BEST solution?

- A. Private IP Addressing
- B. Wireless Access Points
- C. Wide Area Networking
- D. Virtual Local Area Networks

Answer: B

NEW QUESTION 350

- (Exam Topic 3)

A technician looks at an ARP table in an attempt to resolve a connectivity issue. After table of the switch is a cleared, a different MAC in the output, Which of the following does this indicate?

- A. ARP flooding
- B. VLAN mismatch
- C. Duplicate IP address
- D. Faulty NIC

Answer: A

NEW QUESTION 352

- (Exam Topic 3)

When using high bandwidth applications over multiple WAN connections, which of the following should be used?

- A. Static IP addressing
- B. Half-duplex
- C. PoE devices
- D. Load balancing

Answer: D

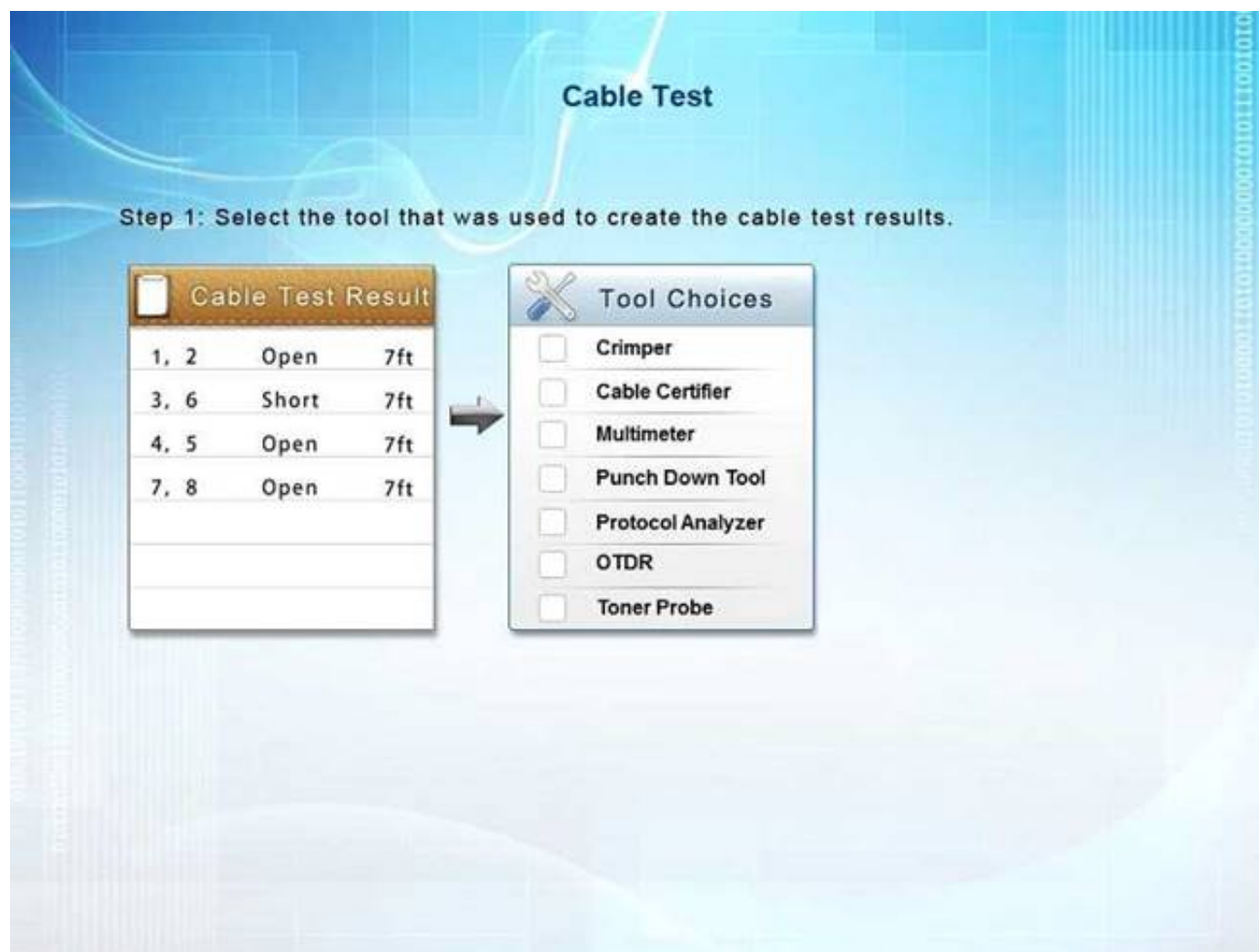
NEW QUESTION 357

- (Exam Topic 3)

You have been tasked with testing a CAT5e cable. A summary of the test results can be found on the screen. Step 1: Select the tool that was used to create the cable test results.

Step 2: Interpret the test results and select the option that explains the results. After you are done with your analysis, click the 'Submit Cable Test Analysis' button.





- A. Mastered
- B. Not Mastered

Answer: A

Explanation:

A Cable Certifier provides "Pass" or "Fail" information in accordance with industry standards but can also show detailed information when a "Fail" occurs. This includes shorts, the wire pairs involved and the distance to the short. When a short is identified, at the full length of the cable it means the cable has not been crimped correctly.

NEW QUESTION 358

- (Exam Topic 3)

A network technician performs several switch commands to enable various advanced features on the switch in the accounting department. During the configuration changes, several users from this department report connectivity issues. Which of the following logs would the network technician need to analyze to troubleshoot the connectivity issues?

- A. Router logs
- B. History logs
- C. Startup/bootup config logs
- D. Event Viewer logs

Answer: B

NEW QUESTION 363

- (Exam Topic 3)

Which of the follow creates a secure remote connection at the OSI network layer?

- A. L2TP
- B. SSL
- C. DTLS
- D. IPSec

Answer: D

NEW QUESTION 365

- (Exam Topic 3)

Which of the following technologies allows more than two transceivers with an access point?

- A. MIMO
- B. FIFO
- C. 802.1x
- D. WPA

Answer: A

NEW QUESTION 369

- (Exam Topic 3)

A network technician needs to install an additional access point to the company's wireless network. The network has two 802.11b access points. Which of the following channels should be used to allow the access point's coverage areas to overlap?

- A. 1, 6, 11
- B. 2, 5, 10
- C. 3, 13, 23
- D. 4, 8, 16

Answer: A

NEW QUESTION 372

- (Exam Topic 3)

The network optimization process used to allow reasonable use of data, voice, and video on the same network infrastructure is called:

- A. CARP
- B. QoS
- C. Traffic shaping.
- D. Fault tolerance.

Answer: B

NEW QUESTION 373

- (Exam Topic 3)

Kim, a network administrator, should consult which documentation sources FIRST to determine the cause of recent network issues?

- A. Network map
- B. Cable management
- C. Change management
- D. Asset management

Answer: C

NEW QUESTION 374

- (Exam Topic 3)

Which of the following technologies could be implemented to improve call clarity when using VoIP technology?

- A. Static IP addressing
- B. Caching engines
- C. QoS
- D. Port forwarding

Answer: C

NEW QUESTION 375

- (Exam Topic 3)

Jeff, a customer, has a wireless network and has reported that the network traffic from the wireless access points seems high compared to the limited number of wireless devices used. Jeff believes that other non-employees are using the wireless network to access the Internet. Which of the following could be used to limit the access to the wireless network? (Select TWO).

- A. WPA encryption
- B. Changing wireless channels
- C. MAC filtering
- D. Changing wireless speed standards
- E. SSID disable

Answer: AC

NEW QUESTION 378

- (Exam Topic 3)

A company decides to deploy customer-facing, touch-scan kiosks. The kiosks appear to have several open service ports that could potentially become compromised. Which of the following is the MOST effective way to protect the kiosks?

- A. Install an IDS to monitor all traffic to and from the kiosks.
- B. Install honeypots on the network to detect and analyze potential kiosk attacks before they occur.
- C. Enable switchport security on the ports to which the kiosks are connected to prevent network –level attacks.
- D. Create a new network segment with ACLs, limiting kiosks' traffic with the internal network.

Answer: D

NEW QUESTION 380

- (Exam Topic 3)

Which of the following protocols is used for remote management of devices?

- A. SNMP
- B. TFTP
- C. Syslog

D. SMTP

Answer: A

NEW QUESTION 385

- (Exam Topic 3)

A network technician receives a call from a branch office about a problem with its wireless connectivity. The user states the office hosting a large meeting that includes some online training with local businesses. The guest users have all brought devices to connect to the guest network at the branch office. All users are connected to a single WAP and are reporting that connections dropping and network speeds are unusable. Which of the following is the MOST likely cause of this issue?

- A. DHCP exhaustion
- B. Chanel overlapping
- C. Interference
- D. Overcapacity

Answer: C

NEW QUESTION 389

- (Exam Topic 3)

Which of the following needs to be configured on a switch to use a packet sniffer?

- A. Port trunking
- B. Port mirroring
- C. Tagged VLAN
- D. Untagged VLAN

Answer: B

NEW QUESTION 393

- (Exam Topic 3)

Which of the following will prevent switching loops by selectively shutting down switch ports?

- A. RIP
- B. IGP
- C. STP
- D. VLAN

Answer: C

NEW QUESTION 394

- (Exam Topic 3)

Which of the following is used to create a secure connection between a client and a host?

- A. VLAN
- B. Proxy server
- C. IIS server
- D. VPN

Answer: D

NEW QUESTION 396

- (Exam Topic 3)

No link lights on a switch's SFP are functioning, so the network technician re-terminates the end. After testing the cable, the tester is showing a db loss of-9. Which of the following types of cable is MOST likely being tested?

- A. Fiber
- B. CAT3
- C. CAT5e
- D. CAT6a

Answer: A

NEW QUESTION 399

- (Exam Topic 3)

An administrator is troubleshooting analog telephony issues on the punch down block. Which of the following tools would be MOST useful in this scenario?

- A. T1 loopback
- B. Butt set
- C. Multimeter
- D. Protocol analyzer

Answer: B

NEW QUESTION 404

- (Exam Topic 3)

Which of the following technologies allows for redundant links within a Layer 2 segment?

- A. OSPF
- B. RIP
- C. Port Mirroring
- D. Spanning Tree

Answer: D

NEW QUESTION 409

- (Exam Topic 3)

Lisa, a technician, has configured a new switch that is remotely accessed using SSH. The switch is working properly but cannot be accessed remotely. Which of the following items is MOST likely missing in the configuration?

- A. Port speed
- B. Cryptokey
- C. Data VLAN
- D. NAT/PAT

Answer: B

NEW QUESTION 413

- (Exam Topic 3)

Kim, a user, cannot access the network using wireless. Which of the following is MOST likely the cause?

- A. TXRX is reversed
- B. Faulty crossover cable
- C. Incorrect WEP key
- D. A short in the cable pairs

Answer: C

NEW QUESTION 418

- (Exam Topic 3)

Keeping an authoritative and timely record of network devices and their settings is a key activity of which of the following?

- A. Project management
- B. Quality of service
- C. Configuration management
- D. Bandwidth shaping

Answer: C

NEW QUESTION 422

- (Exam Topic 3)

A technician needs to test the length of a newly installed cable run because it is believed that it exceeds the maximum specification length. Which of the following tools should be used?

- A. Cable certifier
- B. Toner probe
- C. Cable tester
- D. Protocol analyzer

Answer: A

NEW QUESTION 423

- (Exam Topic 3)

A technician is surveying college's network equipment room and connectivity. Which of the following types of documentation does the technician need perform a detailed site survey? (Select THREE).

- A. IDF/MDF documentation
- B. Cable run label documentation
- C. network configuration documentation
- D. Performance baseline documentation
- E. Standard operating procedure documentation
- F. Change management documentation
- G. Rack diagram documentation

Answer: ACG

NEW QUESTION 425

.....

Thank You for Trying Our Product

* 100% Pass or Money Back

All our products come with a 90-day Money Back Guarantee.

* One year free update

You can enjoy free update one year. 24x7 online support.

* Trusted by Millions

We currently serve more than 30,000,000 customers.

* Shop Securely

All transactions are protected by VeriSign!

100% Pass Your N10-007 Exam with Our Prep Materials Via below:

<https://www.certleader.com/N10-007-dumps.html>