

EC-Council

Exam Questions 312-49v10

Computer Hacking Forensic Investigator (CHFI-v10)



NEW QUESTION 1

- (Exam Topic 3)

You need to deploy a new web-based software package for your organization. The package requires three separate servers and needs to be available on the Internet. What is the recommended architecture in terms of server placement?

- A. All three servers need to be placed internally
- B. A web server and the database server facing the Internet, an application server on the internal network
- C. A web server facing the Internet, an application server on the internal network, a database server on the internal network
- D. All three servers need to face the Internet so that they can communicate between themselves

Answer: D

NEW QUESTION 2

- (Exam Topic 3)

In Linux OS, different log files hold different information, which help the investigators to analyze various issues during a security incident. What information can the investigators obtain from the log file `var/log/dmesg`?

- A. Kernel ring buffer information
- B. All mail server message logs
- C. Global system messages
- D. Debugging log messages

Answer: A

NEW QUESTION 3

- (Exam Topic 3)

Pick the statement which does not belong to the Rule 804. Hearsay Exceptions; Declarant Unavailable.

- A. Statement of personal or family history
- B. Prior statement by witness
- C. Statement against interest
- D. Statement under belief of impending death

Answer: D

NEW QUESTION 4

- (Exam Topic 3)

In which implementation of RAID will the image of a Hardware RAID volume be different from the image taken separately from the disks?

- A. RAID 1
- B. The images will always be identical because data is mirrored for redundancy
- C. RAID 0
- D. It will always be different

Answer: D

NEW QUESTION 5

- (Exam Topic 3)

Brian needs to acquire data from RAID storage. Which of the following acquisition methods is recommended to retrieve only the data relevant to the investigation?

- A. Static Acquisition
- B. Sparse or Logical Acquisition
- C. Bit-stream disk-to-disk Acquisition
- D. Bit-by-bit Acquisition

Answer: B

NEW QUESTION 6

- (Exam Topic 3)

Which of the following statements is TRUE about SQL Server error logs?

- A. SQL Server error logs record all the events occurred on the SQL Server and its databases
- B. Forensic investigator uses SQL Server Profiler to view error log files
- C. Error logs contain IP address of SQL Server client connections
- D. Trace files record, user-defined events, and specific system events

Answer: B

NEW QUESTION 7

- (Exam Topic 3)

While collecting Active Transaction Logs using SQL Server Management Studio, the query `Select * from ::fn_dblog(NULL, NULL)` displays the active portion of the transaction log file. Here, assigning NULL values implies?

- A. Start and end points for log sequence numbers are specified

- B. Start and end points for log files are not specified
- C. Start and end points for log files are specified
- D. Start and end points for log sequence numbers are not specified

Answer: B

NEW QUESTION 8

- (Exam Topic 3)

Which U.S. law sets the rules for sending emails for commercial purposes, establishes the minimum requirements for commercial messaging, gives the recipients of emails the right to ask the senders to stop emailing them, and spells out the penalties in case the above said rules are violated?

- A. NO-SPAM Act
- B. American: NAVSO P-5239-26 (RLL)
- C. CAN-SPAM Act
- D. American: DoD 5220.22-M

Answer: C

NEW QUESTION 9

- (Exam Topic 3)

What do you call the process in which an attacker uses magnetic field over the digital media device to delete any previously stored data?

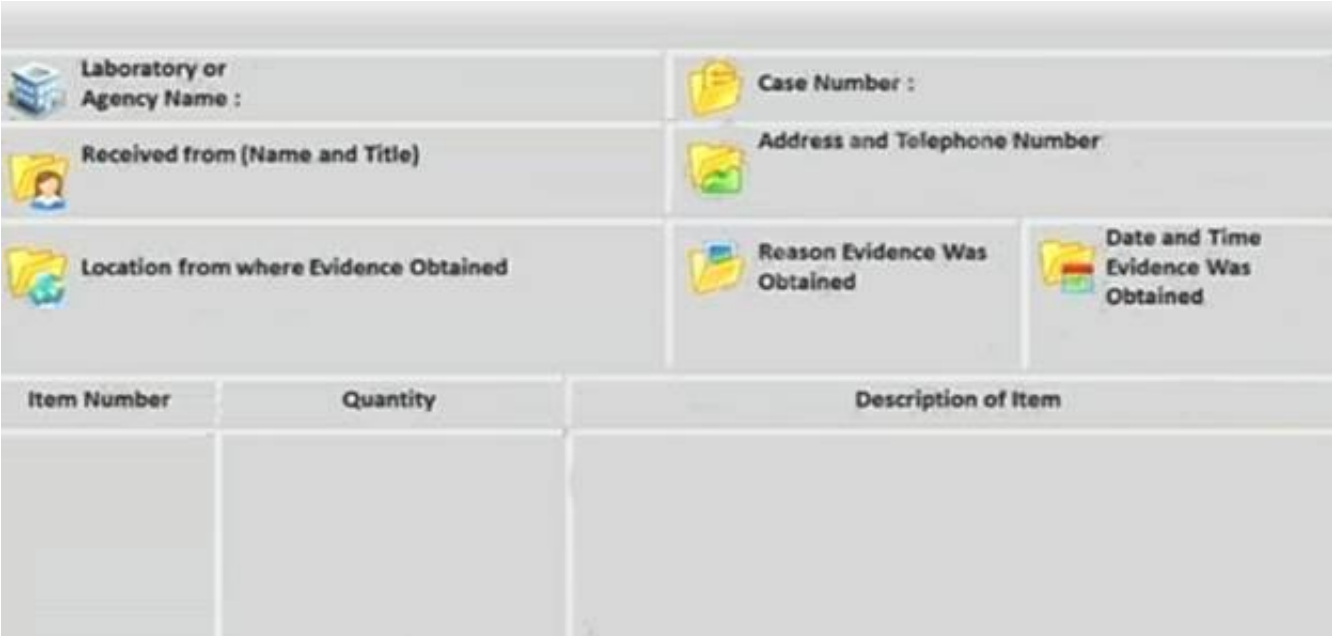
- A. Disk deletion
- B. Disk cleaning
- C. Disk degaussing
- D. Disk magnetization

Answer: C

NEW QUESTION 10

- (Exam Topic 3)

What document does the screenshot represent?



The screenshot shows a form for evidence collection. It has several sections with icons: 'Laboratory or Agency Name' (building icon), 'Case Number' (folder icon), 'Received from (Name and Title)' (person icon), 'Address and Telephone Number' (house icon), 'Location from where Evidence Obtained' (map icon), 'Reason Evidence Was Obtained' (document icon), and 'Date and Time Evidence Was Obtained' (calendar icon). Below these is a table with three columns: 'Item Number', 'Quantity', and 'Description of Item'.

Item Number	Quantity	Description of Item

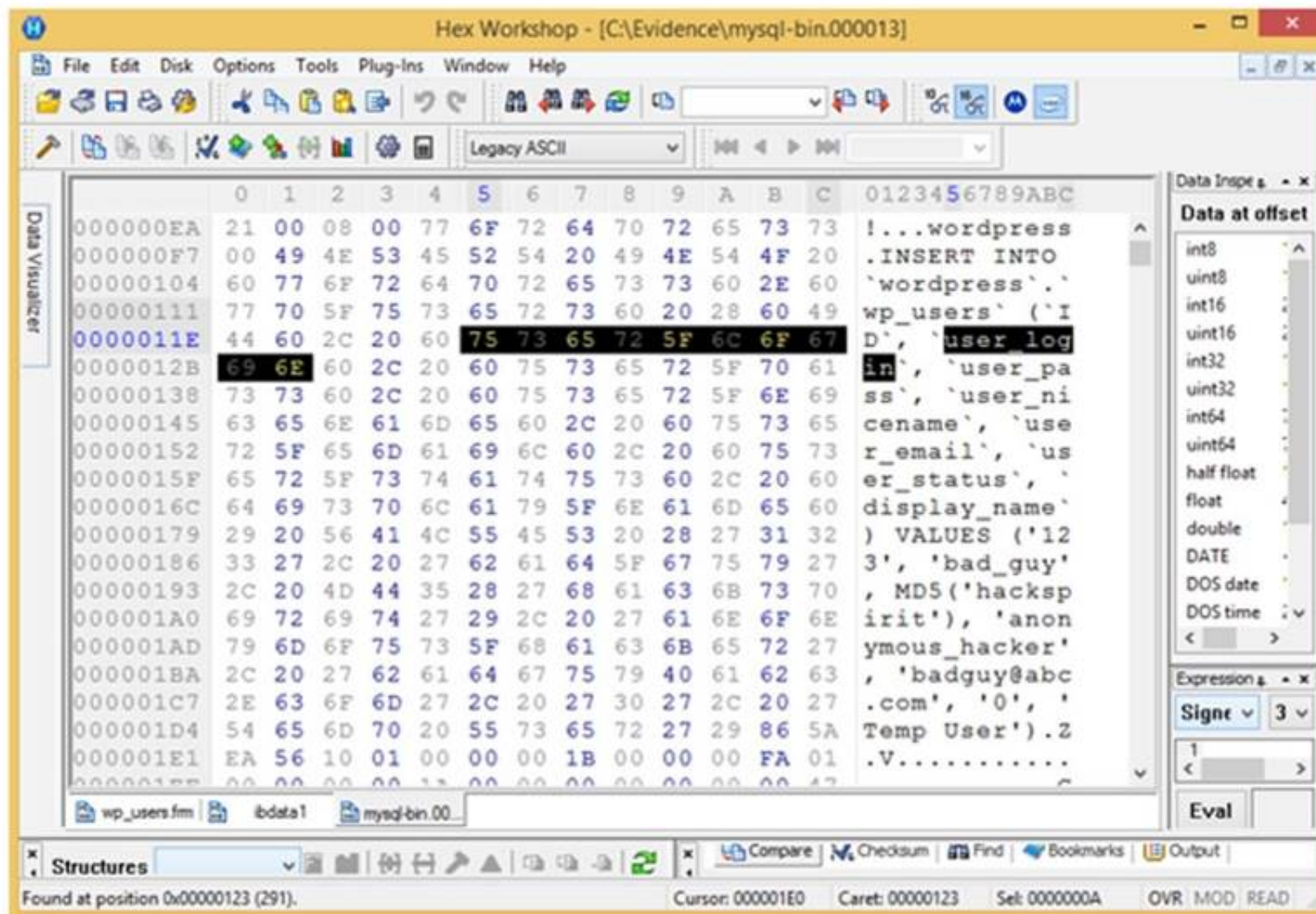
- A. Expert witness form
- B. Search warrant form
- C. Chain of custody form
- D. Evidence collection form

Answer: D

NEW QUESTION 10

- (Exam Topic 3)

Analyze the hex representation of mysql-bin.000013 file in the screenshot below. Which of the following will be an inference from this analysis?



- A. A user with username bad_guy has logged into the WordPress web application
- B. A WordPress user has been created with the username anonymous_hacker
- C. An attacker with name anonymous_hacker has replaced a user bad_guy in the WordPress database
- D. A WordPress user has been created with the username bad_guy

Answer: D

NEW QUESTION 14

- (Exam Topic 3)

Amber, a black hat hacker, has embedded malware into a small enticing advertisement and posted it on a popular ad-network that displays across various websites. What is she doing?

- A. Malvertising
- B. Compromising a legitimate site
- C. Click-jacking
- D. Spearphishing

Answer: A

NEW QUESTION 17

- (Exam Topic 3)

Which of the following components within the android architecture stack take care of displaying windows owned by different applications?

- A. Media Framework
- B. Surface Manager
- C. Resource Manager
- D. Application Framework

Answer: D

NEW QUESTION 21

- (Exam Topic 3)

Gary, a computer technician, is facing allegations of abusing children online by befriending them and sending them illicit adult images from his office computer. What type of investigation does this case require?

- A. Administrative Investigation
- B. Criminal Investigation
- C. Both Criminal and Administrative Investigation
- D. Civil Investigation

Answer: B

NEW QUESTION 26

- (Exam Topic 3)

> NMAP -sn 192.168.11.200-215 The NMAP command above performs which of the following?

- A. A trace sweep
- B. A port scan
- C. A ping scan
- D. An operating system detect

Answer: C

NEW QUESTION 29

- (Exam Topic 3)

Which of the following Android libraries are used to render 2D (SGL) or 3D (OpenGL/ES) graphics content to the screen?

- A. OpenGL/ES and SGL
- B. Surface Manager
- C. Media framework
- D. WebKit

Answer: A

NEW QUESTION 34

- (Exam Topic 3)

Select the data that a virtual memory would store in a Windows-based system.

- A. Information or metadata of the files
- B. Documents and other files
- C. Application data
- D. Running processes

Answer: D

NEW QUESTION 38

- (Exam Topic 3)

You are working as an independent computer forensics investigator and received a call from a systems administrator for a local school system requesting your assistance. One of the students at the local high school is suspected of downloading inappropriate images from the Internet to a PC in the Computer Lab. When you arrive at the school, the systems administrator hands you a hard drive and tells you that he made a “simple backup copy” of the hard drive in the PC and put it on this drive and requests that you examine the drive for evidence of the suspected images. You inform him that a “simple backup copy” will not provide deleted files or recover file fragments. What type of copy do you need to make to ensure that the evidence found is complete and admissible in future proceeding?

- A. Robust copy
- B. Incremental backup copy
- C. Bit-stream copy
- D. Full backup copy

Answer: C

NEW QUESTION 41

- (Exam Topic 3)

For what purpose do the investigators use tools like iPhoneBrowser, iFunBox, OpenSSHSSH, and iMazing?

- A. Bypassing iPhone passcode
- B. Debugging iPhone
- C. Rooting iPhone
- D. Copying contents of iPhone

Answer: A

NEW QUESTION 43

- (Exam Topic 3)

Which among the following laws emphasizes the need for each Federal agency to develop, document, and implement an organization-wide program to provide information security for the information systems that support its operations and assets?

- A. FISMA
- B. HIPAA
- C. GLBA
- D. SOX

Answer: A

NEW QUESTION 44

- (Exam Topic 3)

A company's policy requires employees to perform file transfers using protocols which encrypt traffic. You suspect some employees are still performing file transfers using unencrypted protocols because the employees don't like changes. You have positioned a network sniffer to capture traffic from the laptops used by employees in the data ingest department. Using Wireshark to examine the captured traffic, which command can be used as a display filter to find unencrypted file transfers?

- A. tcp.port = 23

- B. tcp.port == 21
- C. tcp.port == 21 || tcp.port == 22
- D. tcp.port != 21

Answer: B

NEW QUESTION 47

- (Exam Topic 3)

Jim's company regularly performs backups of their critical servers. But the company can't afford to send backup tapes to an off-site vendor for long term storage and archiving. Instead Jim's company keeps the backup tapes in a safe in the office. Jim's company is audited each year, and the results from this year's audit show a risk because backup tapes aren't stored off-site. The Manager of Information Technology has a plan to take the backup tapes home with him and wants to know what two things he can do to secure the backup tapes while in transit?

- A. Encrypt the backup tapes and use a courier to transport them.
- B. Encrypt the backup tapes and transport them in a lock box
- C. Degauss the backup tapes and transport them in a lock box.
- D. Hash the backup tapes and transport them in a lock box.

Answer: B

NEW QUESTION 50

- (Exam Topic 3)

Andie, a network administrator, suspects unusual network services running on a windows system. Which of the following commands should he use to verify unusual network services started on a Windows system?

- A. net serv
- B. netmgr
- C. lusmgr
- D. net start

Answer: D

NEW QUESTION 54

- (Exam Topic 3)

Which of the following does Microsoft Exchange E-mail Server use for collaboration of various e-mail applications?

- A. Simple Mail Transfer Protocol (SMTP)
- B. Messaging Application Programming Interface (MAPI)
- C. Internet Message Access Protocol (IMAP)
- D. Post Office Protocol version 3 (POP3)

Answer: B

NEW QUESTION 59

- (Exam Topic 3)

What is the framework used for application development for iOS-based mobile devices?

- A. Cocoa Touch
- B. Dalvik
- C. Zygote
- D. AirPlay

Answer: A

NEW QUESTION 62

- (Exam Topic 3)

The Apache server saves diagnostic information and error messages that it encounters while processing requests. The default path of this file is usr/local/apache/logs/error.log in Linux. Identify the Apache error log from the following logs.

- A. http://victim.com/scripts/..%c0%af../..%c0%af../..%c0%af../..%c0%af../..%c0%af../..%c0%af../..%c0%af../..%c0%af../winnt/system32/cmd.exe?/c+dir+C:\Winnt\system32\Logfiles\W3SVC1
- B. [Wed Oct 11 14:32:52 2000] [error] [client 127.0.0.1] client denied by server configuration:/export/home/live/ap/htdocs/test
- C. 127.0.0.1 - frank [10/Oct/2000:13:55:36 -0700]"GET /apache_pb.gif HTTP/1.0" 200 2326
- D. 127.0.0.1 - - [10/Apr/2007:10:39:11 +0300]] [error] "GET /apache_pb.gif HTTP/1.0" 200 2326

Answer: B

NEW QUESTION 63

- (Exam Topic 3)

Consider that you are investigating a machine running an Windows OS released prior to Windows Vista. You are trying to gather information about the deleted files by examining the master database file named INFO2 located at C:\Recycler\<USER SID>\. You read an entry named "Dd5.exe". What does Dd5.exe mean?

- A. D driv
- B. fifth file deleted, a .exe file
- C. D drive, fourth file restored, a .exe file
- D. D drive, fourth file deleted, a .exe file
- E. D drive, sixth file deleted, a .exe file

Answer: B

NEW QUESTION 67

- (Exam Topic 3)

Which command can provide the investigators with details of all the loaded modules on a Linux-based system?

- A. list modules -a
- B. lsmod
- C. plist mod -a
- D. lsof -m

Answer: B

NEW QUESTION 72

- (Exam Topic 3)

Hard disk data addressing is a method of allotting addresses to each _____ of data on a hard disk.

- A. Physical block
- B. Operating system block
- C. Hard disk block
- D. Logical block

Answer: A

NEW QUESTION 74

- (Exam Topic 3)

Which of the following processes is part of the dynamic malware analysis?

- A. Process Monitoring
- B. Malware disassembly
- C. Searching for the strings
- D. File fingerprinting

Answer: A

NEW QUESTION 79

- (Exam Topic 3)

Which list contains the most recent actions performed by a Windows User?

- A. MRU
- B. Activity
- C. Recents
- D. Windows Error Log

Answer: A

NEW QUESTION 81

- (Exam Topic 3)

During forensics investigations, investigators tend to collect the system time at first and compare it with UTC. What does the abbreviation UTC stand for?

- A. Coordinated Universal Time
- B. Universal Computer Time
- C. Universal Time for Computers
- D. Correlated Universal Time

Answer: A

NEW QUESTION 84

- (Exam Topic 3)

Jacob is a computer forensics investigator with over 10 years of experience in investigations and has written over 50 articles on computer forensics. He has been called upon as a qualified witness to testify the accuracy and integrity of the technical log files gathered in an investigation into computer fraud. What is the term used for Jacob's testimony in this case?

- A. Certification
- B. Justification
- C. Reiteration
- D. Authentication

Answer: D

NEW QUESTION 89

- (Exam Topic 3)

Robert is a regional manager working in a reputed organization. One day, he suspected malware attack after unwanted programs started to popup after logging into his computer. The network administrator was called upon to trace out any intrusion on the computer and he/she finds that suspicious activity has taken place within Autostart locations. In this situation, which of the following tools is used by the network administrator to detect any intrusion on a system?

- A. Hex Editor
- B. Internet Evidence Finder
- C. Process Monitor
- D. Report Viewer

Answer: C

NEW QUESTION 93

- (Exam Topic 3)

If the partition size is 4 GB, each cluster will be 32 K. Even if a file needs only 10 K, the entire 32 K will be allocated, resulting in 22 K of _____ .

- A. Slack space
- B. Deleted space
- C. Sector space
- D. Cluster space

Answer: A

NEW QUESTION 98

- (Exam Topic 3)

In a computer that has Dropbox client installed, which of the following files related to the Dropbox client store information about local Dropbox installation and the Dropbox user account, along with email IDs linked with the account?

- A. config.db
- B. install.db
- C. sigstore.db
- D. filecache.db

Answer: A

NEW QUESTION 101

- (Exam Topic 3)

During the trial, an investigator observes that one of the principal witnesses is severely ill and cannot be present for the hearing. He decides to record the evidence and present it to the court. Under which rule should he present such evidence?

- A. Rule 1003: Admissibility of Duplicates
- B. Limited admissibility
- C. Locard's Principle
- D. Hearsay

Answer: B

NEW QUESTION 104

- (Exam Topic 3)

Select the tool appropriate for finding the dynamically linked lists of an application or malware.

- A. SysAnalyzer
- B. ResourcesExtract
- C. PEiD
- D. Dependency Walker

Answer: D

NEW QUESTION 107

- (Exam Topic 3)

Which of the following network attacks refers to sending huge volumes of email to an address in an attempt to overflow the mailbox or overwhelm the server where the email address is hosted so as to cause a denial-of-service attack?

- A. Email spamming
- B. Phishing
- C. Email spoofing
- D. Mail bombing

Answer: D

NEW QUESTION 109

- (Exam Topic 3)

You are asked to build a forensic lab and your manager has specifically informed you to use copper for lining the walls, ceilings, and floor. What is the main purpose of lining the walls, ceilings, and floor with copper?

- A. To control the room temperature
- B. To strengthen the walls, ceilings, and floor
- C. To avoid electromagnetic emanations
- D. To make the lab sound proof

Answer: D

NEW QUESTION 113

- (Exam Topic 3)

In both pharming and phishing attacks an attacker can create websites that look similar to legitimate sites with the intent of collecting personal identifiable information from its victims. What is the difference between pharming and phishing attacks?

- A. Both pharming and phishing attacks are purely technical and are not considered forms of social engineering
- B. In a pharming attack a victim is redirected to a fake website by modifying their host configuration file or by exploiting vulnerabilities in DN
- C. In a phishing attack an attacker provides the victim with a URL that is either misspelled or looks similar to the actual websites domain name
- D. In a phishing attack a victim is redirected to a fake website by modifying their host configuration file or by exploiting vulnerabilities in DN
- E. In a pharming attack an attacker provides the victim with a URL that is either misspelled or looks very similar to the actual websites domain name
- F. Both pharming and phishing attacks are identical

Answer: B

NEW QUESTION 117

- (Exam Topic 3)

As a Certified Ethical Hacker, you were contracted by a private firm to conduct an external security assessment through penetration testing . What document describes the specifics of the testing, the associated violations, and essentially protects both the organization's interest and your liabilities as a tester?

- A. Project Scope
- B. Rules of Engagement
- C. Non-Disclosure Agreement
- D. Service Level Agreement

Answer: B

NEW QUESTION 119

- (Exam Topic 3)

In which cloud crime do attackers try to compromise the security of the cloud environment in order to steal data or inject a malware?

- A. Cloud as an Object
- B. Cloud as a Tool
- C. Cloud as an Application
- D. Cloud as a Subject

Answer: D

NEW QUESTION 120

- (Exam Topic 3)

Shane, a forensic specialist, is investigating an ongoing attack on a MySQL database server hosted on a Windows machine with SID "WIN-ABCDE12345F." Which of the following log file will help Shane in tracking all the client connections and activities performed on the database server?

- A. WIN-ABCDE12345F.err
- B. WIN-ABCDE12345F-bin.n
- C. WIN-ABCDE12345F.pid
- D. WIN-ABCDE12345F.log

Answer: D

NEW QUESTION 125

- (Exam Topic 3)

Which part of Metasploit framework helps users to hide the data related to a previously deleted file or currently unused by the allocated file.

- A. Waffen FS
- B. RuneFS
- C. FragFS
- D. Slacker

Answer: D

NEW QUESTION 128

- (Exam Topic 3)

Which forensic investigation methodology believes that criminals commit crimes solely to benefit their criminal enterprises?

- A. Scientific Working Group on Digital Evidence
- B. Daubert Standard
- C. Enterprise Theory of Investigation
- D. Fyre Standard

Answer: C

NEW QUESTION 130

- (Exam Topic 3)

Select the tool appropriate for examining the dynamically linked libraries of an application or malware.

- A. DependencyWalker

- B. SysAnalyzer
- C. PEiD
- D. ResourcesExtract

Answer: A

NEW QUESTION 135

- (Exam Topic 3)

%3cscript%3ealert("XXXXXXXX")%3c/script%3e is a script obtained from a Cross-Site Scripting attack. What type of encoding has the attacker employed?

- A. Double encoding
- B. Hex encoding
- C. Unicode
- D. Base64

Answer: B

NEW QUESTION 137

- (Exam Topic 3)

Which of the following statements is incorrect when preserving digital evidence?

- A. Verify if the monitor is in on, off, or in sleep mode
- B. Turn on the computer and extract Windows event viewer log files
- C. Remove the plug from the power router or modem
- D. Document the actions and changes that you observe in the monitor, computer, printer, or in other peripherals

Answer: B

NEW QUESTION 138

- (Exam Topic 3)

The Recycle Bin exists as a metaphor for throwing files away, but it also allows a user to retrieve and restore files. Once the file is moved to the recycle bin, a record is added to the log file that exists in the Recycle Bin. Which of the following files contains records that correspond to each deleted file in the Recycle Bin?

- A. INFO2
- B. INFO1
- C. LOGINFO1
- D. LOGINFO2

Answer: A

NEW QUESTION 140

- (Exam Topic 3)

Tasklist command displays a list of applications and services with their Process ID (PID) for all tasks running on either a local or a remote computer. Which of the following tasklist commands provides information about the listed processes, including the image name, PID, name, and number of the session for the process?

- A. tasklist /p
- B. tasklist /v
- C. tasklist /u
- D. tasklist /s

Answer: B

NEW QUESTION 141

- (Exam Topic 3)

companyXYZ has asked you to assess the security of their perimeter email gateway. From your office in New York you craft a specially formatted email message and send it across the Internet to an employee of CompanyXYZ. The employee of CompanyXYZ is aware.

- A. Source code review
- B. Reviewing the firewalls configuration
- C. Data items and vulnerability scanning
- D. Interviewing employees and network engineers

Answer: A

NEW QUESTION 145

- (Exam Topic 3)

James is dealing with a case regarding a cybercrime that has taken place in Arizona, USA. James needs to lawfully seize the evidence from an electronic device without affecting the user's anonymity. Which of the following law should he comply with, before retrieving the evidence?

- A. First Amendment of the U.
- B. Constitution
- C. Fourth Amendment of the U.
- D. Constitution
- E. Third Amendment of the U.
- F. Constitution
- G. Fifth Amendment of the U.
- H. Constitution

Answer: D

NEW QUESTION 147

- (Exam Topic 3)

Identify the file system that uses \$BitMap file to keep track of all used and unused clusters on a volume.

- A. NTFS
- B. FAT
- C. EXT
- D. FAT32

Answer: A

NEW QUESTION 152

- (Exam Topic 3)

MAC filtering is a security access control methodology, where a _____ is assigned to each network card to determine access to the network.

- A. 48-bit address
- B. 24-bit address
- C. 16-bit address
- D. 32-bit address

Answer: A

NEW QUESTION 156

- (Exam Topic 3)

Report writing is a crucial stage in the outcome of an investigation. Which information should not be included in the report section?

- A. Speculation or opinion as to the cause of the incident
- B. Purpose of the report
- C. Author of the report
- D. Incident summary

Answer: A

NEW QUESTION 159

- (Exam Topic 3)

Which of the following is NOT a physical evidence?

- A. Removable media
- B. Cables
- C. Image file on a hard disk
- D. Publications

Answer: C

NEW QUESTION 162

- (Exam Topic 3)

As part of extracting the system data, Jenifer has used the netstat command. What does this tool reveal?

- A. Status of users connected to the internet
- B. Net status of computer usage
- C. Information about network connections
- D. Status of network hardware

Answer: C

NEW QUESTION 165

- (Exam Topic 3)

Which of the following Windows-based tool displays who is logged onto a computer, either locally or remotely?

- A. Tokenmon
- B. PSLoggedon
- C. TCPView
- D. Process Monitor

Answer: B

NEW QUESTION 170

- (Exam Topic 3)

Which cloud model allows an investigator to acquire the instance of a virtual machine and initiate the forensics examination process?

- A. PaaS model
- B. IaaS model
- C. SaaS model

D. SecaaS model

Answer: B

NEW QUESTION 175

- (Exam Topic 3)

Which program uses different techniques to conceal a malware's code, thereby making it difficult for security mechanisms to detect or remove it?

- A. Dropper
- B. Packer
- C. Injector
- D. Obfuscator

Answer: D

NEW QUESTION 180

- (Exam Topic 3)

Raw data acquisition format creates _____ of a data set or suspect drive.

- A. Segmented image files
- B. Simple sequential flat files
- C. Compressed image files
- D. Segmented files

Answer: B

NEW QUESTION 183

- (Exam Topic 3)

Which of the following is NOT an anti-forensics technique?

- A. Data Deduplication
- B. Password Protection
- C. Encryption
- D. Steganography

Answer: A

NEW QUESTION 185

- (Exam Topic 3)

Sheila is a forensics trainee and is searching for hidden image files on a hard disk. She used a forensic investigation tool to view the media in hexadecimal code for simplifying the search process. Which of the following hex codes should she look for to identify image files?

- A. ff d8 ff
- B. 25 50 44 46
- C. d0 0f 11 e0
- D. 50 41 03 04

Answer: A

NEW QUESTION 188

- (Exam Topic 3)

Which of the following is a device monitoring tool?

- A. Capsa
- B. Driver Detective
- C. Regshot
- D. RAM Capturer

Answer: A

NEW QUESTION 191

- (Exam Topic 3)

One technique for hiding information is to change the file extension from the correct one to the one that might not be noticed by an investigator. For example, changing a .jpg extension to a .doc extension so that a picture file appears to be a document. What can an investigator examine to verify that a file has the correct extension?

- A. The file header
- B. The File Allocation Table
- C. The file footer
- D. The sector map

Answer: A

NEW QUESTION 194

- (Exam Topic 3)

Which of the following tool can reverse machine code to assembly language?

- A. PEiD
- B. RAM Capturer
- C. IDA Pro
- D. Deep Log Analyzer

Answer: C

NEW QUESTION 196

- (Exam Topic 3)

What system details can an investigator obtain from the NetBIOS name table cache?

- A. List of files opened on other systems
- B. List of the system present on a router
- C. List of connections made to other systems
- D. List of files shared between the connected systems

Answer: C

NEW QUESTION 199

- (Exam Topic 3)

What does Locard's Exchange Principle state?

- A. Any information of probative value that is either stored or transmitted in a digital form
- B. Digital evidence must have some characteristics to be disclosed in the court of law
- C. Anyone or anything, entering a crime scene takes something of the scene with them, and leaves something of themselves behind when they leave
- D. Forensic investigators face many challenges during forensics investigation of a digital crime, such as extracting, preserving, and analyzing the digital evidence

Answer: C

NEW QUESTION 203

- (Exam Topic 3)

Which of the following file formats allows the user to compress the acquired data as well as keep it randomly accessible?

- A. Proprietary Format
- B. Generic Forensic Zip (gfzip)
- C. Advanced Forensic Framework 4
- D. Advanced Forensics Format (AFF)

Answer: B

NEW QUESTION 207

- (Exam Topic 3)

Buffer overflow vulnerability of a web application occurs when it fails to guard its buffer properly and allows writing beyond its maximum size. Thus, it overwrites the _____. There are multiple forms of buffer overflow, including a Heap Buffer Overflow and a Format String Attack.

- A. Adjacent memory locations
- B. Adjacent bit blocks
- C. Adjacent buffer locations
- D. Adjacent string locations

Answer: A

NEW QUESTION 212

- (Exam Topic 3)

Amelia has got an email from a well-reputed company stating in the subject line that she has won a prize money, whereas the email body says that she has to pay a certain amount for being eligible for the contest.

Which of the following acts does the email breach?

- A. CAN-SPAM Act
- B. HIPAA
- C. GLBA
- D. SOX

Answer: A

NEW QUESTION 217

- (Exam Topic 3)

Centralized binary logging is a process in which many websites write binary and unformatted log data to a single log file. What extension should the investigator look to find its log file?

- A. .cbl
- B. .log
- C. .ibl
- D. .txt

Answer: C

NEW QUESTION 222

- (Exam Topic 3)

Which of the following standard represents a legal precedent regarding the admissibility of scientific examinations or experiments in legal cases?

- A. SWGDE & SWGIT
- B. Daubert
- C. Frye
- D. IOCE

Answer: C

NEW QUESTION 225

- (Exam Topic 3)

Which of the following is a responsibility of the first responder?

- A. Determine the severity of the incident
- B. Collect as much information about the incident as possible
- C. Share the collected information to determine the root cause
- D. Document the findings

Answer: B

NEW QUESTION 230

- (Exam Topic 3)

An investigator enters the command `sqlcmd -S WIN-CQQMK62867E -e -s"," -E` as part of collecting the primary data file and logs from a database. What does the "WIN-CQQMK62867E" represent?

- A. Name of the Database
- B. Name of SQL Server
- C. Operating system of the system
- D. Network credentials of the database

Answer: B

NEW QUESTION 235

- (Exam Topic 3)

An attacker has compromised a cloud environment of a company and used the employee information to perform an identity theft attack. Which type of attack is this?

- A. Cloud as a subject
- B. Cloud as a tool
- C. Cloud as an object
- D. Cloud as a service

Answer: A

NEW QUESTION 239

- (Exam Topic 2)

You have been called in to help with an investigation of an alleged network intrusion. After questioning the members of the company IT department, you search through the server log files to find any trace of the intrusion. After that you decide to telnet into one of the company routers to see if there is any evidence to be found. While connected to the router, you see some unusual activity and believe that the attackers are currently connected to that router. You start up an ethereal session to begin capturing traffic on the router that could be used in the investigation. At what layer of the OSI model are you monitoring while watching traffic to and from the router?

- A. Network
- B. Transport
- C. Data Link
- D. Session

Answer: A

NEW QUESTION 241

- (Exam Topic 2)

A computer forensics investigator is inspecting the firewall logs for a large financial institution that has employees working 24 hours a day, 7 days a week.

```
2007-06-14 23:59:05 192.168.254.1 action=Permit sent=16169 rcvd=180962 src=24.119.229.125 dst=10.120.10.122 src_port=38
2007-06-14 23:59:06 192.168.254.1 action=Deny sent=0 rcvd=12288 src=10.130.9.2 dst=224.0.0.2 src_port=49415 dst_port=49
2007-06-14 23:59:07 192.168.254.1 action=Permit sent=844 rcvd=486 src=24.119.229.125 dst=10.120.10.123 src_port=38660 d
2007-06-14 23:59:07 192.168.254.1 action=Permit sent=549 rcvd=404 src=192.168.254.80 dst=208.188.166.68 src_port=15113
2007-06-14 23:59:07 192.168.254.1 action=Permit sent=549 rcvd=404 src=192.168.254.80 dst=208.188.166.68 src_port=14857
2007-06-14 23:59:07 192.168.254.1 action=Deny sent=0 rcvd=12288 src=10.130.9.3 dst=224.0.0.2 src_port=49415 dst_port=49
2007-06-14 23:59:09 192.168.254.1 action=Permit sent=13795 rcvd=149962 src=70.185.206.122 dst=10.120.10.122 src_port=61
2007-06-14 23:59:09 192.168.254.1 action=Permit sent=690 rcvd=415 src=70.185.198.247 dst=10.120.10.123 src_port=48392 d
2007-06-14 23:59:09 192.168.254.1 action=Permit sent=12219 rcvd=140495 src=70.185.206.122 dst=10.120.10.122 src_port=61
2007-06-14 23:59:09 192.168.254.1 action=Deny sent=0 rcvd=12288 src=10.130.9.2 dst=224.0.0.2 src_port=49415 dst_port=49
2007-06-14 23:59:10 192.168.254.1 action=Deny sent=0 rcvd=12288 src=10.130.9.3 dst=224.0.0.2 src_port=49415 dst_port=49
2007-06-14 18:34:04 192.168.254.1 action=Permit sent=3018 rcvd=34134 src=70.185.198.247 dst=10.120.10.122 src_port=4480
2007-06-14 18:34:05 192.168.254.1 action=Permit sent=799 rcvd=6686 src=70.185.198.247 dst=10.120.10.122 src_port=46344
2007-06-14 18:34:07 192.168.254.1 action=Permit sent=2780 rcvd=18874 src=70.185.198.247 dst=10.120.10.122 src_port=4532
2007-06-14 18:34:07 192.168.254.1 action=Permit sent=2737 rcvd=8922 src=24.119.169.162 dst=10.120.10.122 src_port=2689
2007-06-14 18:34:09 192.168.254.1 action=Permit sent=2094 rcvd=23180 src=70.185.198.247 dst=10.120.10.122 src_port=4685
2007-06-14 18:34:11 192.168.254.1 action=Permit sent=2612 rcvd=68608 src=70.185.198.247 dst=10.120.10.122 src_port=4711
2007-06-14 18:34:12 192.168.254.1 action=Permit sent=4131 rcvd=71135 src=24.119.169.162 dst=10.120.10.122 src_port=1665
2007-06-14 18:34:13 192.168.254.1 action=Permit sent=646 rcvd=1803 src=70.185.198.247 dst=10.120.10.122 src_port=47368
2007-06-14 21:47:29 192.168.254.1 action=Permit sent=729 rcvd=1115 src=70.185.198.247 dst=10.120.10.122 src_port=48136
2007-06-14 21:47:30 192.168.254.1 action=Permit sent=766 rcvd=415 src=70.185.206.122 dst=10.120.10.123 src_port=62212 d
2007-06-14 21:47:35 192.168.254.1 action=Permit sent=5054 rcvd=81725 src=24.119.169.162 dst=10.120.10.122 src_port=7899
2007-06-14 21:47:37 192.168.254.1 action=Permit sent=26196 rcvd=233409 src=24.119.229.125 dst=10.120.10.122 src_port=38
2007-06-14 21:47:40 192.168.254.1 action=Deny sent=0 rcvd=12288 src=10.130.9.2 dst=224.0.0.2 src_port=49415 dst_port=49
2007-06-14 21:47:41 192.168.254.1 action=Permit sent=18121 rcvd=210841 src=216.97.160.253 dst=10.120.10.122 src_port=94
2007-06-14 21:47:42 192.168.254.1 action=Permit sent=5741 rcvd=102596 src=24.119.169.162 dst=10.120.10.122 src_port=579
2007-06-14 21:47:42 192.168.254.1 action=Permit sent=2982 rcvd=24075 src=24.119.169.162 dst=10.120.10.122 src_port=641
2007-06-14 21:47:43 192.168.254.1 action=Permit sent=2397 rcvd=28655 src=24.119.169.162 dst=10.120.10.122 src_port=1600
2007-06-14 21:47:46 192.168.254.1 action=Permit sent=840 rcvd=492 src=24.119.169.162 dst=10.120.10.123 src_port=13185 d
2007-06-14 21:47:49 192.168.254.1 action=Permit sent=3348 rcvd=18192 src=24.119.169.162 dst=10.120.10.122 src_port=4737
2007-06-14 21:47:55 192.168.254.1 action=Permit sent=3780 rcvd=34120 src=24.119.169.162 dst=10.120.10.122 src_port=3713
2007-06-14 21:47:57 192.168.254.1 action=Permit sent=3604 rcvd=30265 src=24.119.169.162 dst=10.120.10.122 src_port=6783
2007-06-14 21:47:58 192.168.254.1 action=Permit sent=3406 rcvd=39223 src=24.119.169.162 dst=10.120.10.122 src_port=5761
2007-06-14 21:47:59 192.168.254.1 action=Deny sent=0 rcvd=12288 src=10.130.9.3 dst=224.0.0.2 src_port=49415 dst_port=49
2007-06-14 21:48:04 192.168.254.1 action=Permit sent=549 rcvd=404 src=192.168.254.80 dst=208.188.166.68 src_port=7696 d
2007-06-14 21:48:05 192.168.254.1 action=Deny sent=0 rcvd=12288 src=10.130.9.2 dst=224.0.0.2 src_port=49415 dst_port=49
2007-06-14 21:48:09 192.168.254.1 action=Deny sent=0 rcvd=12288 src=10.130.9.3 dst=224.0.0.2 src_port=49415 dst_port=49
2007-06-14 21:48:09 192.168.254.1 action=Deny sent=0 rcvd=12288 src=10.130.9.2 dst=224.0.0.2 src_port=49415 dst_port=49
2007-06-14 21:48:10 192.168.254.1 action=Permit sent=407 rcvd=0 src=192.168.254.14 dst=204.61.5.130 src_port=260 dst_po
2007-06-14 21:48:13 192.168.254.1 action=Permit sent=1040 rcvd=0 src=192.168.254.14 dst=204.61.5.130 src_port=41216 dst
2007-06-14 21:48:15 192.168.254.1 action=Deny sent=0 rcvd=12288 src=10.130.9.3 dst=224.0.0.2 src_port=49415 dst_port=49
2007-06-14 21:48:16 192.168.254.1 action=Deny sent=0 rcvd=12264 src=10.130.9.3 dst=224.0.0.2 src_port=49415 dst_port=49
```

What can the investigator infer from the screenshot seen below?

- A. A smurf attack has been attempted
- B. A denial of service has been attempted
- C. Network intrusion has occurred
- D. Buffer overflow attempt on the firewall.

Answer: C

NEW QUESTION 243

- (Exam Topic 2)

Madison is on trial for allegedly breaking into her university's internal network. The police raided her dorm room and seized all of her computer equipment.

Madison's lawyer is trying to convince the judge that the seizure was unfounded and baseless. Under which US Amendment is Madison's lawyer trying to prove the police violated?

- A. The 4th Amendment
- B. The 1st Amendment
- C. The 10th Amendment
- D. The 5th Amendment

Answer: A

NEW QUESTION 248

- (Exam Topic 2)

What feature of Decryption Collection allows an investigator to crack a password as quickly as possible?

- A. Cracks every password in 10 minutes
- B. Distribute processing over 16 or fewer computers
- C. Support for Encrypted File System
- D. Support for MD5 hash verification

Answer: B

NEW QUESTION 252

- (Exam Topic 2)

What type of flash memory card comes in either Type I or Type II and consumes only five percent of the power required by small hard drives?

- A. SD memory
- B. CF memory
- C. MMC memory
- D. SM memory

Answer: B

NEW QUESTION 256

- (Exam Topic 2)

Tyler is setting up a wireless network for his business that he runs out of his home. He has followed all the directions from the ISP as well as the wireless router manual. He does not have any encryption set and the

SSID is being broadcast. On his laptop, he can pick up the wireless signal for short periods of time, but then the connection drops and the signal goes away.

Eventually the wireless signal shows back up, but drops intermittently. What could be Tyler issue with his home wireless network?

- A. Computers on his wired network
- B. Satellite television
- C. 2.4Ghz Cordless phones
- D. CB radio

Answer: C

NEW QUESTION 260

- (Exam Topic 2)

Preparing an image drive to copy files to is the first step in Linux forensics. For this purpose, what would the following command accomplish?
dcfldd if=/dev/zero of=/dev/hda bs=4096 conv=noerror, sync

- A. Fill the disk with zeros
- B. Low-level format
- C. Fill the disk with 4096 zeros
- D. Copy files from the master disk to the slave disk on the secondary IDE controller

Answer: A

NEW QUESTION 264

- (Exam Topic 2)

What file is processed at the end of a Windows XP boot to initialize the logon dialog box?

- A. NTOSKRNL.EXE
- B. NTLDR
- C. LSASS.EXE
- D. NTDETECT.COM

Answer: A

NEW QUESTION 265

- (Exam Topic 2)

What encryption technology is used on Blackberry devices Password Keeper?

- A. 3DES
- B. AES
- C. Blowfish
- D. RC5

Answer: B

NEW QUESTION 270

- (Exam Topic 2)

What will the following Linux command accomplish? dd if=/dev/mem of=/home/sam/mem.bin bs=1024

- A. Copy the master boot record to a file
- B. Copy the contents of the system folder to a file
- C. Copy the running memory to a file
- D. Copy the memory dump file to an image file

Answer: C

NEW QUESTION 272

- (Exam Topic 2)

What must an investigator do before disconnecting an iPod from any type of computer?

- A. Unmount the iPod
- B. Mount the iPod
- C. Disjoin the iPod
- D. Join the iPod

Answer: A

NEW QUESTION 276

- (Exam Topic 2)

Paraben Lockdown device uses which operating system to write hard drive data?

- A. Mac OS
- B. Red Hat
- C. Unix
- D. Windows

Answer: D

NEW QUESTION 280

- (Exam Topic 2)

What will the following command accomplish? dd if=/dev/xxx of=mbr.backup bs=512 count=1

- A. Back up the master boot record
- B. Restore the master boot record
- C. Mount the master boot record on the first partition of the hard drive
- D. Restore the first 512 bytes of the first partition of the hard drive

Answer:

A

NEW QUESTION 283

- (Exam Topic 2)

Which of the following tool enables data acquisition and duplication?

- A. Colasoft's Capsa
- B. DriveSpy
- C. Wireshark
- D. Xplico

Answer: B

NEW QUESTION 287

- (Exam Topic 2)

Which of the following refers to the process of the witness being questioned by the attorney who called the latter to the stand?

- A. Witness Authentication
- B. Direct Examination
- C. Expert Witness
- D. Cross Questioning

Answer: B

NEW QUESTION 289

- (Exam Topic 2)

Company ABC has employed a firewall, IDS, Antivirus, Domain Controller, and SIEM. The company's domain controller goes down. From which system would you begin your investigation?

- A. Domain Controller
- B. Firewall
- C. SIEM
- D. IDS

Answer: C

NEW QUESTION 292

- (Exam Topic 2)

What advantage does the tool Evidor have over the built-in Windows search?

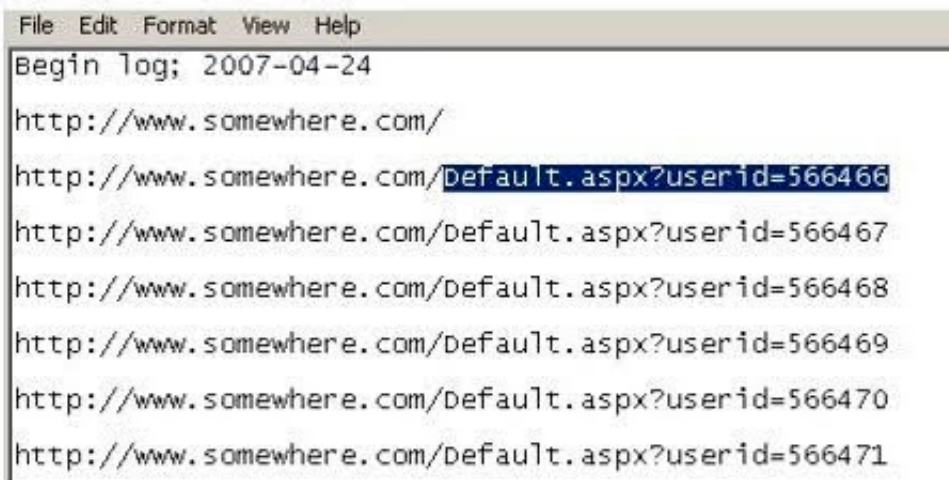
- A. It can find deleted files even after they have been physically removed
- B. It can find bad sectors on the hard drive
- C. It can search slack space
- D. It can find files hidden within ADS

Answer: C

NEW QUESTION 296

- (Exam Topic 2)

Using Internet logging software to investigate a case of malicious use of computers, the investigator comes across some entries that appear odd.



```
File Edit Format View Help
Begin log; 2007-04-24
http://www.somewhere.com/
http://www.somewhere.com/default.aspx?userid=566466
http://www.somewhere.com/default.aspx?userid=566467
http://www.somewhere.com/default.aspx?userid=566468
http://www.somewhere.com/default.aspx?userid=566469
http://www.somewhere.com/default.aspx?userid=566470
http://www.somewhere.com/default.aspx?userid=566471
```

From the log, the investigator can see where the person in question went on the Internet. From the log, it appears that the user was manually typing in different user ID numbers. What technique this user was trying?

- A. Parameter tampering
- B. Cross site scripting
- C. SQL injection
- D. Cookie Poisoning

Answer: A

NEW QUESTION 297

- (Exam Topic 2)

When marking evidence that has been collected with the aa/ddmmyy/nnnn/zz format, what does the nnn denote?

- A. The year the evidence was taken
- B. The sequence number for the parts of the same exhibit
- C. The initials of the forensics analyst
- D. The sequential number of the exhibits seized

Answer: D

NEW QUESTION 300

- (Exam Topic 2)

Which of the following files stores information about local Dropbox installation and account, email IDs linked with the account, current version/build for the local application, the host_id, and local path information?

- A. host.db
- B. sigstore.db
- C. config.db
- D. filecache.db

Answer: C

NEW QUESTION 304

- (Exam Topic 2)

The process of restarting a computer that is already turned on through the operating system is called?

- A. Warm boot
- B. Ice boot
- C. Hot Boot
- D. Cold boot

Answer: A

NEW QUESTION 306

- (Exam Topic 2)

What does the part of the log, "% SEC-6-IPACCESSLOGP", extracted from a Cisco router represent?

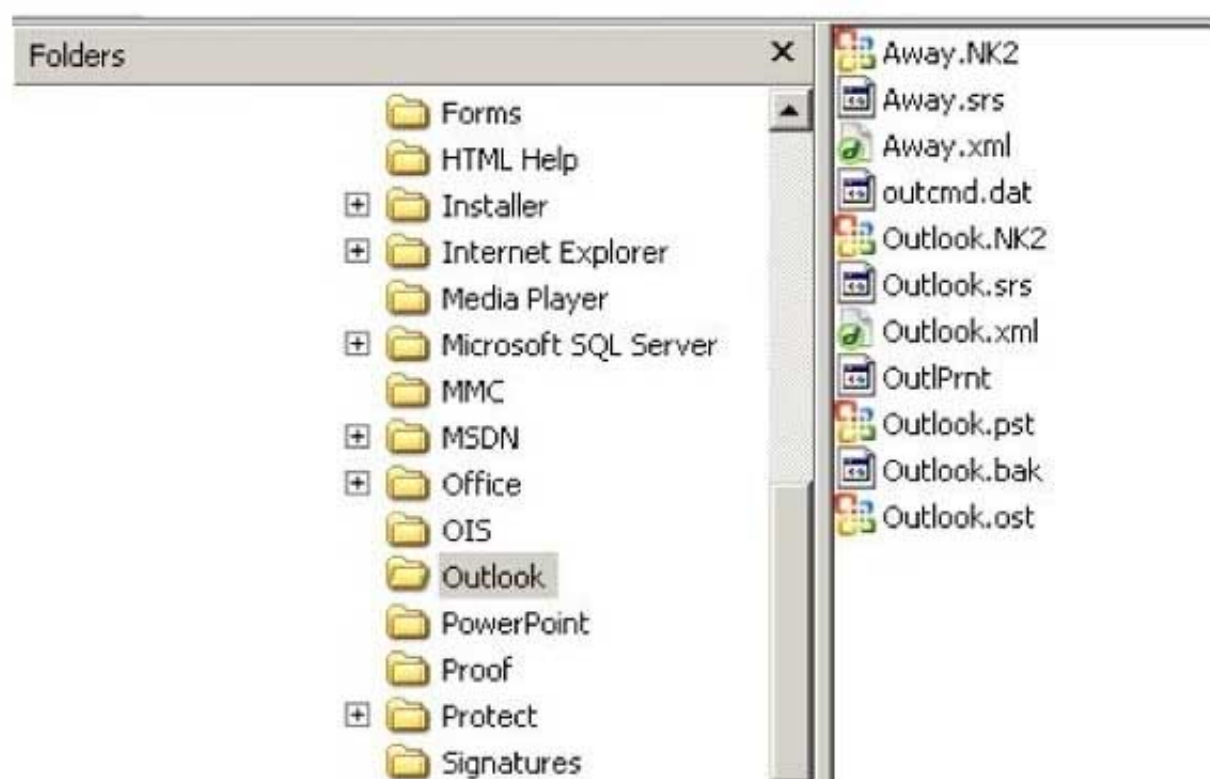
- A. The system was not able to process the packet because there was not enough room for all of the desired IP header options
- B. Immediate action required messages
- C. Some packet-matching logs were missed because the access list log messages were rate limited, or no access list log buffers were available
- D. A packet matching the log criteria for the given access list has been detected (TCP or UDP)

Answer: D

NEW QUESTION 310

- (Exam Topic 2)

In the following directory listing,



Which file should be used to restore archived email messages for someone using Microsoft Outlook?

- A. Outlook bak
- B. Outlook ost
- C. Outlook NK2
- D. Outlook pst

Answer: D

NEW QUESTION 314

- (Exam Topic 2)

While presenting his case to the court, Simon calls many witnesses to the stand to testify. Simon decides to call Hillary Taft, a lay witness, to the stand. Since Hillary is a lay witness, what field would she be considered an expert in?

- A. Technical material related to forensics
- B. No particular field
- C. Judging the character of defendants/victims
- D. Legal issues

Answer: B

NEW QUESTION 318

- (Exam Topic 2)

Which MySQL log file contains information on server start and stop?

- A. Slow query log file
- B. General query log file
- C. Binary log
- D. Error log file

Answer: D

NEW QUESTION 320

- (Exam Topic 2)

When carrying out a forensics investigation, why should you never delete a partition on a dynamic disk?

- A. All virtual memory will be deleted
- B. The wrong partition may be set to active
- C. This action can corrupt the disk
- D. The computer will be set in a constant reboot state

Answer: C

NEW QUESTION 325

- (Exam Topic 2)

Which network attack is described by the following statement?

“At least five Russian major banks came under a continuous hacker attack, although online client services were not disrupted. The attack came from a wide-scale botnet involving at least 24,000 computers, located in 30 countries.”

- A. DDoS
- B. Sniffer Attack
- C. Buffer Overflow
- D. Man-in-the-Middle Attack

Answer: A

NEW QUESTION 329

- (Exam Topic 2)

If a PDA is seized in an investigation while the device is turned on, what would be the proper procedure?

- A. Keep the device powered on
- B. Turn off the device immediately
- C. Remove the battery immediately
- D. Remove any memory cards immediately

Answer: A

NEW QUESTION 333

- (Exam Topic 2)

When a user deletes a file or folder, the system stores complete path including the original filename in a special hidden file called “INFO2” in the Recycled folder. If the INFO2 file is deleted, it is recovered when you _____ .

- A. Undo the last action performed on the system
- B. Reboot Windows
- C. Use a recovery tool to undelete the file
- D. Download the file from Microsoft website

Answer: A

NEW QUESTION 336

- (Exam Topic 2)

What is considered a grant of a property right given to an individual who discovers or invents a new machine, process, useful composition of matter or manufacture?

- A. Copyright
- B. Design patent

- C. Trademark
- D. Utility patent

Answer: D

NEW QUESTION 340

- (Exam Topic 2)

Ivanovich, a forensics investigator, is trying to extract complete information about running processes from a system. Where should he look apart from the RAM and virtual memory?

- A. Swap space
- B. Application data
- C. Files and documents
- D. Slack space

Answer: A

NEW QUESTION 342

- (Exam Topic 2)

Where is the startup configuration located on a router?

- A. Static RAM
- B. BootROM
- C. NVRAM
- D. Dynamic RAM

Answer: C

NEW QUESTION 347

- (Exam Topic 2)

In Steganalysis, which of the following describes a Known-stego attack?

- A. The hidden message and the corresponding stego-image are known
- B. During the communication process, active attackers can change cover
- C. Original and stego-object are available and the steganography algorithm is known
- D. Only the steganography medium is available for analysis

Answer: C

NEW QUESTION 349

- (Exam Topic 2)

To check for POP3 traffic using Ethereal, what port should an investigator search by?

- A. 143
- B. 25
- C. 110
- D. 125

Answer: C

NEW QUESTION 350

- (Exam Topic 2)

A master boot record (MBR) is the first sector ("sector zero") of a data storage device. What is the size of MBR?

- A. Depends on the capacity of the storage device
- B. 1048 Bytes
- C. 4092 Bytes
- D. 512 Bytes

Answer: D

NEW QUESTION 355

- (Exam Topic 2)

What is the primary function of the tool CHKDSK in Windows that authenticates the file system reliability of a volume?

- A. Repairs logical file system errors
- B. Check the disk for hardware errors
- C. Check the disk for connectivity errors
- D. Check the disk for Slack Space

Answer: A

NEW QUESTION 357

- (Exam Topic 2)

Which of the following stages in a Linux boot process involve initialization of the system's hardware?

- A. BIOS Stage
- B. Bootloader Stage
- C. BootROM Stage
- D. Kernel Stage

Answer: A

NEW QUESTION 360

- (Exam Topic 2)

Which of the following acts as a network intrusion detection system as well as network intrusion prevention system?

- A. Accunetix
- B. Nikto
- C. Snort
- D. Kismet

Answer: C

NEW QUESTION 361

- (Exam Topic 2)

Which of the following data structures stores attributes of a process, as well as pointers to other attributes and data structures?

- A. Lsproc
- B. DumpChk
- C. RegEdit
- D. EProcess

Answer: D

NEW QUESTION 362

- (Exam Topic 2)

What is the size value of a nibble?

- A. 0.5 kilo byte
- B. 0.5 bit
- C. 0.5 byte
- D. 2 bits

Answer: C

NEW QUESTION 365

- (Exam Topic 2)

Harold is a computer forensics investigator working for a consulting firm out of Atlanta Georgia. Harold is called upon to help with a corporate espionage case in Miami Florida. Harold assists in the investigation by pulling all the data from the computers allegedly used in the illegal activities. He finds that two suspects in the company were stealing sensitive corporate information and selling it to competing companies. From the email and instant messenger logs recovered, Harold has discovered that the two employees notified the buyers by writing symbols on the back of specific stop signs. This way, the buyers knew when and where to meet with the alleged suspects to buy the stolen material. What type of steganography did these two suspects use?

- A. Text semagram
- B. Visual semagram
- C. Grill cipher
- D. Visual cipher

Answer: B

NEW QUESTION 369

- (Exam Topic 2)

Which of the following reports are delivered under oath to a board of directors/managers/panel of the jury?

- A. Written Formal Report
- B. Verbal Formal Report
- C. Verbal Informal Report
- D. Written Informal Report

Answer: B

NEW QUESTION 372

- (Exam Topic 2)

To which phase of the Computer Forensics Investigation Process does the Planning and Budgeting of a Forensics Lab belong?

- A. Post-investigation Phase
- B. Reporting Phase
- C. Pre-investigation Phase
- D. Investigation Phase

Answer: C

NEW QUESTION 375

- (Exam Topic 2)

Annie is searching for certain deleted files on a system running Windows XP OS. Where will she find the files if they were not completely deleted from the system?

- A. C: \$Recycled.Bin
- B. C: \ \$Recycle.Bin
- C. C:\RECYCLER
- D. C:\ \$RECYCLER

Answer: B

NEW QUESTION 380

- (Exam Topic 2)

John is working on his company policies and guidelines. The section he is currently working on covers company documents; how they should be handled, stored, and eventually destroyed. John is concerned about the process whereby outdated documents are destroyed. What type of shredder should John write in the guidelines to be used when destroying documents?

- A. Strip-cut shredder
- B. Cross-cut shredder
- C. Cross-hatch shredder
- D. Cris-cross shredder

Answer: B

NEW QUESTION 384

- (Exam Topic 2)

What is the smallest physical storage unit on a hard drive?

- A. Track
- B. Cluster
- C. Sector
- D. Platter

Answer: C

NEW QUESTION 387

- (Exam Topic 2)

At what layer does a cross site scripting attack occur on?

- A. Presentation
- B. Application
- C. Session
- D. Data Link

Answer: B

NEW QUESTION 390

- (Exam Topic 2)

Which password cracking technique uses every possible combination of character sets?

- A. Rainbow table attack
- B. Brute force attack
- C. Rule-based attack
- D. Dictionary attack

Answer: B

NEW QUESTION 395

- (Exam Topic 2)

When marking evidence that has been collected with the “aaa/ddmmyy/nnnn/zz” format, what does the “nnnn” denote?

- A. The initials of the forensics analyst
- B. The sequence number for the parts of the same exhibit
- C. The year the evidence was taken
- D. The sequential number of the exhibits seized by the analyst

Answer: D

NEW QUESTION 400

- (Exam Topic 2)

What method of copying should always be performed first before carrying out an investigation?

- A. Parity-bit copy
- B. Bit-stream copy
- C. MS-DOS disc copy
- D. System level copy

Answer: B

NEW QUESTION 401

- (Exam Topic 2)

An on-site incident response team is called to investigate an alleged case of computer tampering within their company. Before proceeding with the investigation, the CEO informs them that the incident will be classified as low level. How long will the team have to respond to the incident?

- A. One working day
- B. Two working days
- C. Immediately
- D. Four hours

Answer: A

NEW QUESTION 403

- (Exam Topic 2)

Which program is the bootloader when Windows XP starts up?

- A. KERNEL.EXE
- B. NTLDR
- C. LOADER
- D. LILO

Answer: B

NEW QUESTION 406

- (Exam Topic 2)

Jacky encrypts her documents using a password. It is known that she uses her daughter's year of birth as part of the password. Which password cracking technique would be optimal to crack her password?

- A. Rule-based attack
- B. Brute force attack
- C. Syllable attack
- D. Hybrid attack

Answer: A

NEW QUESTION 411

- (Exam Topic 2)

What layer of the OSI model do TCP and UDP utilize?

- A. Data Link
- B. Network
- C. Transport
- D. Session

Answer: C

NEW QUESTION 416

- (Exam Topic 2)

In handling computer-related incidents, which IT role should be responsible for recovery, containment, and prevention to constituents?

- A. Security Administrator
- B. Network Administrator
- C. Director of Information Technology
- D. Director of Administration

Answer: B

NEW QUESTION 417

- (Exam Topic 2)

What type of attack sends spoofed UDP packets (instead of ping packets) with a fake source address to the IP broadcast address of a large network?

- A. Fraggles
- B. Smurf scan
- C. SYN flood
- D. Teardrop

Answer: A

NEW QUESTION 421

- (Exam Topic 2)

Which among the following search warrants allows the first responder to get the victim's computer information such as service records, billing records, and subscriber information from the service provider?

- A. Citizen Informant Search Warrant
- B. Electronic Storage Device Search Warrant
- C. John Doe Search Warrant
- D. Service Provider Search Warrant

Answer: B

NEW QUESTION 426

- (Exam Topic 2)

Which of the following techniques can be used to beat steganography?

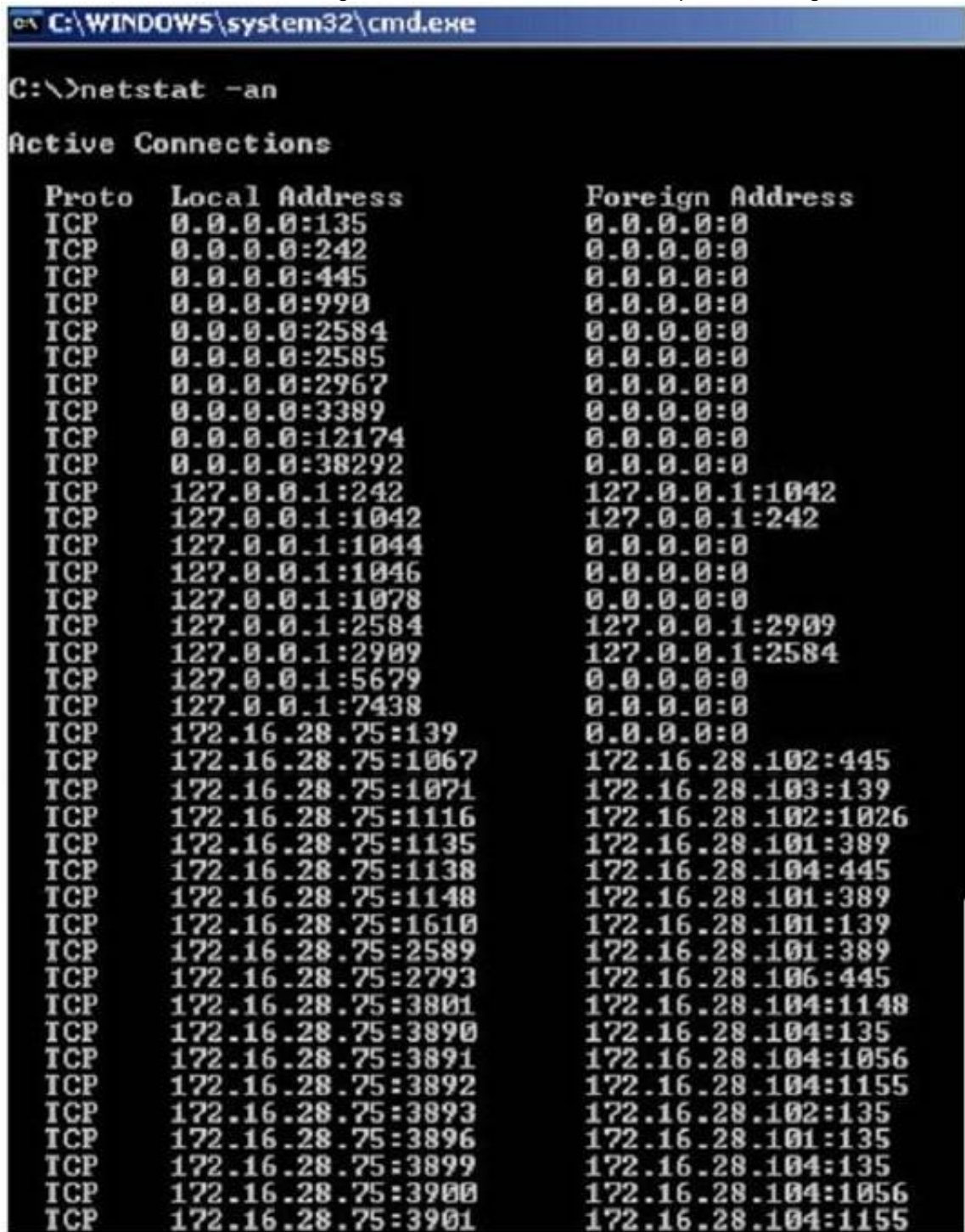
- A. Encryption
- B. Steganalysis
- C. Decryption
- D. Cryptanalysis

Answer: B

NEW QUESTION 431

- (Exam Topic 2)

Jack Smith is a forensics investigator who works for Mason Computer Investigation Services. He is investigating a computer that was infected by Ramen Virus.



He runs the netstat command on the machine to see its current connections. In the following screenshot, what do the 0.0.0.0 IP addresses signify?

- A. Those connections are established
- B. Those connections are in listening mode
- C. Those connections are in closed/waiting mode
- D. Those connections are in timed out/waiting mode

Answer: B

NEW QUESTION 436

- (Exam Topic 2)

Jason discovered a file named \$RIYG6VR.doc in the C:\\$Recycle.Bin\<USER SID>\ while analyzing a hard disk image for the deleted data. What inferences can he make from the file name?

- A. It is a doc file deleted in seventh sequential order
- B. RIYG6VR.doc is the name of the doc file deleted from the system

- C. It is file deleted from R drive
- D. It is a deleted doc file

Answer: D

NEW QUESTION 437

- (Exam Topic 2)

What stage of the incident handling process involves reporting events?

- A. Containment
- B. Follow-up
- C. Identification
- D. Recovery

Answer: C

NEW QUESTION 439

- (Exam Topic 2)

Sectors are pie-shaped regions on a hard disk that store data. Which of the following parts of a hard disk do not contribute in determining the addresses of data?

- A. Sectors
- B. Interface
- C. Cylinder
- D. Heads

Answer: B

NEW QUESTION 442

- (Exam Topic 2)

Which file is a sequence of bytes organized into blocks understandable by the system's linker?

- A. executable file
- B. source file
- C. Object file
- D. None of these

Answer: C

NEW QUESTION 446

- (Exam Topic 2)

Which US law does the interstate or international transportation and receiving of child pornography fall under?

- A. §18. U.S.
- B. 1466A
- C. §18. U.S.C 252
- D. §18. U.S.C 146A
- E. §18. U.S.C 2252

Answer: D

NEW QUESTION 448

- (Exam Topic 2)

Paul is a computer forensics investigator working for Tyler & Company Consultants. Paul has been called upon to help investigate a computer hacking ring broken up by the local police. Paul begins to inventory the PCs found in the hackers hideout. Paul then comes across a PDA left by them that is attached to a number of different peripheral devices. What is the first step that Paul must take with the PDA to ensure the integrity of the investigation?

- A. Place PDA, including all devices, in an antistatic bag
- B. Unplug all connected devices
- C. Power off all devices if currently on
- D. Photograph and document the peripheral devices

Answer: D

NEW QUESTION 449

- (Exam Topic 2)

What hashing method is used to password protect Blackberry devices?

- A. AES
- B. RC5
- C. MD5
- D. SHA-1

Answer: D

NEW QUESTION 451

- (Exam Topic 2)

Where is the default location for Apache access logs on a Linux computer?

- A. usr/local/apache/logs/access_log
- B. bin/local/home/apache/logs/access_log
- C. usr/logs/access_log
- D. logs/usr/apache/access_log

Answer: A

NEW QUESTION 455

- (Exam Topic 2)

Which password cracking technique uses details such as length of password, character sets used to construct the password, etc.?

- A. Dictionary attack
- B. Brute force attack
- C. Rule-based attack
- D. Man in the middle attack

Answer: A

NEW QUESTION 460

- (Exam Topic 2)

Where does Encase search to recover NTFS files and folders?

- A. MBR
- B. MFT
- C. Slack space
- D. HAL

Answer: B

NEW QUESTION 462

- (Exam Topic 2)

Under confession, an accused criminal admitted to encrypting child pornography pictures and then hiding them within other pictures. What technique did the accused criminal employ?

- A. Typography
- B. Steganalysis
- C. Picture encoding
- D. Steganography

Answer: D

NEW QUESTION 463

- (Exam Topic 2)

When making the preliminary investigations in a sexual harassment case, how many investigators are you recommended having?

- A. One
- B. Two
- C. Three
- D. Four

Answer: B

NEW QUESTION 466

- (Exam Topic 1)

What information do you need to recover when searching a victim's computer for a crime committed with specific e-mail message?

- A. Internet service provider information
- B. E-mail header
- C. Username and password
- D. Firewall log

Answer: B

NEW QUESTION 470

- (Exam Topic 1)

After passively scanning the network of Department of Defense (DoD), you switch over to active scanning to identify live hosts on their network. DoD is a large organization and should respond to any number of scans. You start an ICMP ping sweep by sending an IP packet to the broadcast address. Only five hosts respond to your ICMP pings; definitely not the number of hosts you were expecting. Why did this ping sweep only produce a few responses?

- A. Only IBM AS/400 will reply to this scan
- B. Only Windows systems will reply to this scan
- C. A switched network will not respond to packets sent to the broadcast address
- D. Only Unix and Unix-like systems will reply to this scan

Answer: D

NEW QUESTION 474

- (Exam Topic 1)

When examining a hard disk without a write-blocker, you should not start windows because Windows will write data to the:

- A. Recycle Bin
- B. MSDOS.sys
- C. BIOS
- D. Case files

Answer: A

NEW QUESTION 476

- (Exam Topic 1)

George is a senior security analyst working for a state agency in Florida. His state's congress just passed a bill mandating every state agency to undergo a security audit annually. After learning what will be required, George needs to implement an IDS as soon as possible before the first audit occurs. The state bill requires that an IDS with a "time-based induction machine" be used.

What IDS feature must George implement to meet this requirement?

- A. Signature-based anomaly detection
- B. Pattern matching
- C. Real-time anomaly detection
- D. Statistical-based anomaly detection

Answer: C

NEW QUESTION 479

- (Exam Topic 1)

You are running through a series of tests on your network to check for any security vulnerabilities.

After normal working hours, you initiate a DoS attack against your external firewall. The firewall Quickly freezes up and becomes unusable. You then initiate an FTP connection from an external IP into your internal network. The connection is successful even though you have FTP blocked at the external firewall. What has happened?

- A. The firewall failed-bypass
- B. The firewall failed-closed
- C. The firewall ACL has been purged
- D. The firewall failed-open

Answer: D

NEW QUESTION 484

- (Exam Topic 1)

Jessica works as systems administrator for a large electronics firm. She wants to scan her network quickly to detect live hosts by using ICMP ECHO Requests.

What type of scan is Jessica going to perform?

- A. Tracert
- B. Smurf scan
- C. Ping trace
- D. ICMP ping sweep

Answer: D

NEW QUESTION 489

- (Exam Topic 1)

During the course of an investigation, you locate evidence that may prove the innocence of the suspect of the investigation. You must maintain an unbiased opinion and be objective in your entire fact finding process. Therefore, you report this evidence. This type of evidence is known as:

- A. Inculpatory evidence
- B. Mandatory evidence
- C. Exculpatory evidence
- D. Terrible evidence

Answer: C

NEW QUESTION 494

- (Exam Topic 1)

Michael works for Kimball Construction Company as senior security analyst. As part of yearly security audit, Michael scans his network for vulnerabilities. Using Nmap, Michael conducts XMAS scan and most of the ports scanned do not give a response. In what state are these ports?

- A. Closed
- B. Open
- C. Stealth
- D. Filtered

Answer: B

NEW QUESTION 496

- (Exam Topic 1)

When monitoring for both intrusion and security events between multiple computers, it is essential that the computers' clocks are synchronized. Synchronized time allows an administrator to reconstruct what took place during an attack against multiple computers. Without synchronized time, it is very difficult to determine exactly when specific events took place, and how events interlace. What is the name of the service used to synchronize time among multiple computers?

- A. Universal Time Set
- B. Network Time Protocol
- C. SyncTime Service
- D. Time-Sync Protocol

Answer: B

NEW QUESTION 500

- (Exam Topic 1)

Printing under a Windows Computer normally requires which one of the following files types to be created?

- A. EME
- B. MEM
- C. EMF
- D. CME

Answer: C

NEW QUESTION 502

- (Exam Topic 1)

You are working for a large clothing manufacturer as a computer forensics investigator and are called in to investigate an unusual case of an employee possibly stealing clothing designs from the company and selling them under a different brand name for a different company. What you discover during the course of the investigation is that the clothing designs are actually original products of the employee and the company has no policy against an employee selling his own designs on his own time. The only thing that you can find that the employee is doing wrong is that his clothing design incorporates the same graphic symbol as that of the company with only the wording in the graphic being different. What area of the law is the employee violating?

- A. trademark law
- B. copyright law
- C. printright law
- D. brandmark law

Answer: A

NEW QUESTION 505

- (Exam Topic 1)

Which federal computer crime law specifically refers to fraud and related activity in connection with access devices like routers?

- A. 18 U.S.
- B. 1029
- C. 18 U.S.
- D. 1362
- E. 18 U.S.
- F. 2511
- G. 18 U.S.
- H. 2703

Answer: A

NEW QUESTION 509

- (Exam Topic 1)

You have compromised a lower-level administrator account on an Active Directory network of a small company in Dallas, Texas. You discover Domain Controllers through enumeration. You connect to one of the Domain Controllers on port 389 using ldp.exe. What are you trying to accomplish here?

- A. Poison the DNS records with false records
- B. Enumerate MX and A records from DNS
- C. Establish a remote connection to the Domain Controller
- D. Enumerate domain user accounts and built-in groups

Answer: D

NEW QUESTION 510

- (Exam Topic 1)

In a forensic examination of hard drives for digital evidence, what type of user is most likely to have the most file slack to analyze?

- A. one who has NTFS 4 or 5 partitions
- B. one who uses dynamic swap file capability
- C. one who uses hard disk writes on IRQ 13 and 21
- D. one who has lots of allocation units per block or cluster

Answer: D

NEW QUESTION 515

- (Exam Topic 1)

Item 2If you come across a sheepdip machine at your client site, what would you infer?

- A. A sheepdip coordinates several honeypots
- B. A sheepdip computer is another name for a honeypot
- C. A sheepdip computer is used only for virus-checking.
- D. A sheepdip computer defers a denial of service attack

Answer: C

NEW QUESTION 516

- (Exam Topic 1)

When cataloging digital evidence, the primary goal is to

- A. Make bit-stream images of all hard drives
- B. Preserve evidence integrity
- C. Not remove the evidence from the scene
- D. Not allow the computer to be turned off

Answer: B

NEW QUESTION 521

- (Exam Topic 1)

When investigating a Windows System, it is important to view the contents of the page or swap file because:

- A. Windows stores all of the systems configuration information in this file
- B. This is file that windows use to communicate directly with Registry
- C. A Large volume of data can exist within the swap file of which the computer user has no knowledge
- D. This is the file that windows use to store the history of the last 100 commands that were run from the command line

Answer: C

NEW QUESTION 524

- (Exam Topic 1)

When examining a file with a Hex Editor, what space does the file header occupy?

- A. the last several bytes of the file
- B. the first several bytes of the file
- C. none, file headers are contained in the FAT
- D. one byte at the beginning of the file

Answer: D

NEW QUESTION 528

- (Exam Topic 1)

What will the following command accomplish?

- A. Test ability of a router to handle over-sized packets
- B. Test the ability of a router to handle under-sized packets
- C. Test the ability of a WLAN to handle fragmented packets
- D. Test the ability of a router to handle fragmented packets

Answer: A

NEW QUESTION 529

- (Exam Topic 1)

George is the network administrator of a large Internet company on the west coast. Per corporate policy, none of the employees in the company are allowed to use FTP or SFTP programs without obtaining approval from the IT department. Few managers are using SFTP program on their computers. Before talking to his boss, George wants to have some proof of their activity. George wants to use Ethereal to monitor network traffic, but only SFTP traffic to and from his network. What filter should George use in Ethereal?

- A. src port 23 and dst port 23
- B. udp port 22 and host 172.16.28.1/24
- C. net port 22
- D. src port 22 and dst port 22

Answer: D

NEW QUESTION 534

- (Exam Topic 1)

Sectors in hard disks typically contain how many bytes?

- A. 256
- B. 512
- C. 1024
- D. 2048

Answer: B

NEW QUESTION 539

- (Exam Topic 1)

You are working in the security Department of law firm. One of the attorneys asks you about the topic of sending fake email because he has a client who has been charged with doing just that. His client alleges that he is innocent and that there is no way for a fake email to actually be sent. You inform the attorney that his client is mistaken and that fake email is possibility and that you can prove it. You return to your desk and craft a fake email to the attorney that appears to come from his boss. What port do you send the email to on the company SMTP server?

- A. 10
- B. 25
- C. 110
- D. 135

Answer: B

NEW QUESTION 543

- (Exam Topic 1)

What is the name of the Standard Linux Command that is also available as windows application that can be used to create bit-stream images?

- A. mcopy
- B. image
- C. MD5
- D. dd

Answer: D

NEW QUESTION 546

- (Exam Topic 1)

Terri works for a security consulting firm that is currently performing a penetration test on First National Bank in Tokyo. Terri's duties include bypassing firewalls and switches to gain access to the network. Terri sends an IP packet to one of the company's switches with ACK bit and the source address of her machine set. What is Terri trying to accomplish by sending this IP packet?

- A. Trick the switch into thinking it already has a session with Terri's computer
- B. Poison the switch's MAC address table by flooding it with ACK bits
- C. Crash the switch with a DoS attack since switches cannot send ACK bits
- D. Enable tunneling feature on the switch

Answer: A

NEW QUESTION 548

- (Exam Topic 1)

Under which Federal Statutes does FBI investigate for computer crimes involving e-mail scams and mail fraud?

- A. 18 U.S.
- B. 1029 Possession of Access Devices
- C. 18 U.S.
- D. 1030 Fraud and related activity in connection with computers
- E. 18 U.S.
- F. 1343 Fraud by wire, radio or television
- G. 18 U.S.
- H. 1361 Injury to Government Property
- I. 18 U.S.
- J. 1362 Government communication systems
- K. 18 U.S.
- L. 1831 Economic Espionage Act
- M. 18 U.S.
- N. 1832 Trade Secrets Act

Answer: B

NEW QUESTION 553

- (Exam Topic 1)

Which of the following file system is used by Mac OS X?

- A. EFS
- B. HFS+
- C. EXT2
- D. NFS

Answer: B

NEW QUESTION 554

- (Exam Topic 1)

To make sure the evidence you recover and analyze with computer forensics software can be admitted in court, you must test and validate the software. What group is actively providing tools and creating procedures for testing and validating computer forensics software?

- A. Computer Forensics Tools and Validation Committee (CFTVC)
- B. Association of Computer Forensics Software Manufactures (ACFSM)
- C. National Institute of Standards and Technology (NIST)
- D. Society for Valid Forensics Tools and Testing (SVFTT)

Answer: C

NEW QUESTION 556

- (Exam Topic 1)

You are working as a Computer forensics investigator for a corporation on a computer abuse case. You discover evidence that shows the subject of your investigation is also embezzling money from the company. The company CEO and the corporate legal counsel advise you to contact law enforcement and provide them with the evidence that you have found. The law enforcement officer that responds requests that you put a network sniffer on your network and monitor all traffic to the subject's computer. You inform the officer that you will not be able to comply with that request because doing so would:

- A. Violate your contract
- B. Cause network congestion
- C. Make you an agent of law enforcement
- D. Write information to the subject's hard drive

Answer: C

NEW QUESTION 558

- (Exam Topic 1)

A law enforcement officer may only search for and seize criminal evidence with _____, which are facts or circumstances that would lead a reasonable person to believe a crime has been committed or is about to be committed, evidence of the specific crime exists and the evidence of the specific crime exists at the place to be searched.

- A. Mere Suspicion
- B. A preponderance of the evidence
- C. Probable cause
- D. Beyond a reasonable doubt

Answer: C

NEW QUESTION 562

- (Exam Topic 1)

When conducting computer forensic analysis, you must guard against _____. So that you remain focused on the primary job and insure that the level of work does not increase beyond what was originally expected.

- A. Hard Drive Failure
- B. Scope Creep
- C. Unauthorized expenses
- D. Overzealous marketing

Answer: B

NEW QUESTION 564

- (Exam Topic 1)

The MD5 program is used to:

- A. wipe magnetic media before recycling it
- B. make directories on an evidence disk
- C. view graphics files on an evidence drive
- D. verify that a disk is not altered when you examine it

Answer: D

NEW QUESTION 568

- (Exam Topic 1)

What does mactime, an essential part of the coroner's toolkit do?

- A. It traverses the file system and produces a listing of all files based on the modification, access and change timestamps
- B. It can recover deleted file space and search it for dat
- C. However, it does not allow the investigator to preview them
- D. The tools scans for i-node information, which is used by other tools in the tool kit
- E. It is too specific to the MAC OS and forms a core component of the toolkit

Answer: A

NEW QUESTION 569

- (Exam Topic 1)

Meyer Electronics Systems just recently had a number of laptops stolen out of their office. On these laptops contained sensitive corporate information regarding patents and company strategies. A month after the laptops were stolen, a competing company was found to have just developed products that almost exactly duplicated products that Meyer produces. What could have prevented this information from being stolen from the laptops?

- A. EFS Encryption
- B. DFS Encryption

- C. IPS Encryption
- D. SDW Encryption

Answer: A

NEW QUESTION 571

- (Exam Topic 1)

Frank is working on a vulnerability assessment for a company on the West coast. The company hired Frank to assess its network security through scanning, pen tests, and vulnerability assessments. After discovering numerous known vulnerabilities detected by a temporary IDS he set up, he notices a number of items that show up as unknown but Questionable in the logs. He looks up the behavior on the Internet, but cannot find anything related. What organization should Frank submit the log to find out if it is a new vulnerability or not?

- A. APIPA
- B. IANA
- C. CVE
- D. RIPE

Answer: C

NEW QUESTION 572

- (Exam Topic 1)

Bill is the accounting manager for Grummon and Sons LLC in Chicago. On a regular basis, he needs to send PDF documents containing sensitive information through E-mail to his customers.

Bill protects the PDF documents with a password and sends them to their intended recipients. Why PDF passwords do not offer maximum protection?

- A. PDF passwords can easily be cracked by software brute force tools
- B. PDF passwords are converted to clear text when sent through E-mail
- C. PDF passwords are not considered safe by Sarbanes-Oxley
- D. When sent through E-mail, PDF passwords are stripped from the document completely

Answer: A

NEW QUESTION 575

- (Exam Topic 1)

This is original file structure database that Microsoft originally designed for floppy disks. It is written to the outermost track of a disk and contains information about each file stored on the drive.

- A. Master Boot Record (MBR)
- B. Master File Table (MFT)
- C. File Allocation Table (FAT)
- D. Disk Operating System (DOS)

Answer: C

NEW QUESTION 579

- (Exam Topic 1)

After undergoing an external IT audit, George realizes his network is vulnerable to DDoS attacks. What countermeasures could he take to prevent DDoS attacks?

- A. Enable direct broadcasts
- B. Disable direct broadcasts
- C. Disable BGP
- D. Enable BGP

Answer: B

NEW QUESTION 584

- (Exam Topic 1)

What TCP/UDP port does the toolkit program netstat use?

- A. Port 7
- B. Port 15
- C. Port 23
- D. Port 69

Answer: B

NEW QUESTION 586

- (Exam Topic 1)

In General, _____ Involves the investigation of data that can be retrieved from the hard disk or other disks of a computer by applying scientific methods to retrieve the data.

- A. Network Forensics
- B. Data Recovery
- C. Disaster Recovery
- D. Computer Forensics

Answer: D

NEW QUESTION 589

- (Exam Topic 1)

If a suspect computer is located in an area that may have toxic chemicals, you must:

- A. coordinate with the HAZMAT team
- B. determine a way to obtain the suspect computer
- C. assume the suspect machine is contaminated
- D. do not enter alone

Answer: A

NEW QUESTION 592

- (Exam Topic 1)

The following excerpt is taken from a honeypot log. The log captures activities across three days.

There are several intrusion attempts; however, a few are successful.

(Note: The objective of this question is to test whether the student can read basic information from log entries and interpret the nature of attack.)

Apr 24 14:46:46 [4663]: spp_portscan: portscan detected from 194.222.156.169

Apr 24 14:46:46 [4663]: IDS27/FIN Scan: 194.222.156.169:56693 -> 172.16.1.107:482

Apr 24 18:01:05 [4663]: IDS/DNS-version-query: 212.244.97.121:3485 -> 172.16.1.107:53

Apr 24 19:04:01 [4663]: IDS213/ftp-passwd-retrieval: 194.222.156.169:1425 -> 172.16.1.107:21

Apr 25 08:02:41 [5875]: spp_portscan: PORTSCAN DETECTED from 24.9.255.53

Apr 25 02:08:07 [5875]: IDS277/DNS-version-query: 63.226.81.13:4499 -> 172.16.1.107:53

Apr 25 02:08:07 [5875]: IDS277/DNS-version-query: 63.226.81.13:4630 -> 172.16.1.101:53

Apr 25 02:38:17 [5875]: IDS/RPC-rpcinfo-query: 212.251.1.94:642 -> 172.16.1.107:111

Apr 25 19:37:32 [5875]: IDS230/web-cgi-space-wildcard: 198.173.35.164:4221 -> 172.16.1.107:80

Apr 26 05:45:12 [6283]: IDS212/dns-zone-transfer: 38.31.107.87:2291 -> 172.16.1.101:53

Apr 26 06:43:05 [6283]: IDS181/nops-x86: 63.226.81.13:1351 -> 172.16.1.107:53

Apr 26 06:44:25 victim7 PAM_pwd[12509]: (login) session opened for user simple by (uid=0)

Apr 26 06:44:36 victim7 PAM_pwd[12521]: (su) session opened for user simon by simple(uid=506) Apr 26 06:45:34 [6283]: IDS175/socks-probe: 24.112.167.35:20 -> 172.16.1.107:1080

Apr 26 06:52:10 [6283]: IDS127/telnet-login-incorrect: 172.16.1.107:23 -> 213.28.22.189:4558

From the options given below choose the one which best interprets the following entry: Apr 26 06:43:05 [6283]: IDS181/nops-x86: 63.226.81.13:1351 -> 172.16.1.107:53

- A. An IDS evasion technique
- B. A buffer overflow attempt
- C. A DNS zone transfer
- D. Data being retrieved from 63.226.81.13

Answer: A

NEW QUESTION 595

- (Exam Topic 1)

You are employed directly by an attorney to help investigate an alleged sexual harassment case at a large pharmaceutical manufacture. While at the corporate office of the company, the CEO demands to know the status of the investigation. What prevents you from discussing the case with the CEO?

- A. the attorney-work-product rule
- B. Good manners
- C. Trade secrets
- D. ISO 17799

Answer: A

NEW QUESTION 600

- (Exam Topic 1)

You should make at least how many bit-stream copies of a suspect drive?

- A. 1
- B. 2
- C. 3
- D. 4

Answer: B

NEW QUESTION 602

- (Exam Topic 1)

When you carve an image, recovering the image depends on which of the following skills?

- A. Recognizing the pattern of the header content
- B. Recovering the image from a tape backup
- C. Recognizing the pattern of a corrupt file
- D. Recovering the image from the tape backup

Answer: A

NEW QUESTION 604

- (Exam Topic 1)

As a CHFI professional, which of the following is the most important to your professional reputation?

- A. Your Certifications
- B. The correct, successful management of each and every case
- C. The fee that you charge
- D. The friendship of local law enforcement officers

Answer: B

NEW QUESTION 608

- (Exam Topic 1)

You are contracted to work as a computer forensics investigator for a regional bank that has four 30 TB storage area networks that store customer data. What method would be most efficient for you to acquire digital evidence from this network?

- A. create a compressed copy of the file with DoubleSpace
- B. create a sparse data copy of a folder or file
- C. make a bit-stream disk-to-image file
- D. make a bit-stream disk-to-disk file

Answer: C

NEW QUESTION 609

- (Exam Topic 1)

A suspect is accused of violating the acceptable use of computing resources, as he has visited adult websites and downloaded images. The investigator wants to demonstrate that the suspect did indeed visit these sites. However, the suspect has cleared the search history and emptied the cookie cache. Moreover, he has removed any images he might have downloaded. What can the investigator do to prove the violation?

- A. Image the disk and try to recover deleted files
- B. Seek the help of co-workers who are eye-witnesses
- C. Check the Windows registry for connection data (you may or may not recover)
- D. Approach the websites for evidence

Answer: A

NEW QUESTION 614

- (Exam Topic 1)

When a file is deleted by Windows Explorer or through the MS-DOS delete command, the operating system inserts _____ in the first letter position of the filename in the FAT database.

- A. A Capital X
- B. A Blank Space
- C. The Underscore Symbol
- D. The lowercase Greek Letter Sigma (s)

Answer: D

NEW QUESTION 616

- (Exam Topic 1)

One technique for hiding information is to change the file extension from the correct one to one that might not be noticed by an investigator. For example, changing a .jpg extension to a .doc extension so that a picture file appears to be a document. What can an investigator examine to verify that a file has the correct extension?

- A. the File Allocation Table
- B. the file header
- C. the file footer
- D. the sector map

Answer: B

NEW QUESTION 618

- (Exam Topic 1)

What is a good security method to prevent unauthorized users from "tailgating"?

- A. Man trap
- B. Electronic combination locks
- C. Pick-resistant locks
- D. Electronic key systems

Answer: A

NEW QUESTION 623

- (Exam Topic 1)

This organization maintains a database of hash signatures for known software.

- A. International Standards Organization
- B. Institute of Electrical and Electronics Engineers
- C. National Software Reference Library

D. American National standards Institute

Answer: C

NEW QUESTION 628

- (Exam Topic 1)

If you see the files Zer0.tar.gz and copy.tar.gz on a Linux system while doing an investigation, what can you conclude?

- A. The system files have been copied by a remote attacker
- B. The system administrator has created an incremental backup
- C. The system has been compromised using a t0rnrootkit
- D. Nothing in particular as these can be operational files

Answer: D

NEW QUESTION 630

- (Exam Topic 1)

Chris has been called upon to investigate a hacking incident reported by one of his clients. The company suspects the involvement of an insider accomplice in the attack. Upon reaching the incident scene, Chris secures the physical area, records the scene using visual media. He shuts the system down by pulling the power plug so that he does not disturb the system in any way. He labels all cables and connectors prior to disconnecting any. What do you think would be the next sequence of events?

- A. Connect the target media; prepare the system for acquisition; Secure the evidence; Copy the media
- B. Prepare the system for acquisition; Connect the target media; copy the media; Secure the evidence
- C. Connect the target media; Prepare the system for acquisition; Secure the evidence; Copy the media
- D. Secure the evidence; prepare the system for acquisition; Connect the target media; copy the media

Answer: B

NEW QUESTION 635

- (Exam Topic 1)

Your company uses Cisco routers exclusively throughout the network. After securing the routers to the best of your knowledge, an outside security firm is brought in to assess the network security.

Although they found very few issues, they were able to enumerate the model, OS version, and capabilities for all your Cisco routers with very little effort. Which feature will you disable to eliminate the ability to enumerate this information on your Cisco routers?

- A. Border Gateway Protocol
- B. Cisco Discovery Protocol
- C. Broadcast System Protocol
- D. Simple Network Management Protocol

Answer: B

NEW QUESTION 640

- (Exam Topic 1)

Jason is the security administrator of ACMA metal Corporation. One day he notices the company's Oracle database server has been compromised and the customer information along with financial data has been stolen. The financial loss will be in millions of dollars if the database gets into the hands of the competitors. Jason wants to report this crime to the law enforcement agencies immediately.

Which organization coordinates computer crimes investigations throughout the United States?

- A. Internet Fraud Complaint Center
- B. Local or national office of the U.
- C. Secret Service
- D. National Infrastructure Protection Center
- E. CERT Coordination Center

Answer: B

NEW QUESTION 644

- (Exam Topic 1)

You are called by an author who is writing a book and he wants to know how long the copyright for his book will last after he has the book published?

- A. 70 years
- B. the life of the author
- C. the life of the author plus 70 years
- D. copyrights last forever

Answer: C

NEW QUESTION 646

- (Exam Topic 1)

What is the target host IP in the following command?

- A. 172.16.28.95
- B. 10.10.150.1
- C. Firewalk does not scan target hosts
- D. This command is using FIN packets, which cannot scan target hosts

Answer: A

NEW QUESTION 651

- (Exam Topic 1)

When examining the log files from a Windows IIS Web Server, how often is a new log file created?

- A. the same log is used at all times
- B. a new log file is created everyday
- C. a new log file is created each week
- D. a new log is created each time the Web Server is started

Answer: A

NEW QUESTION 652

- (Exam Topic 1)

With the standard Linux second extended file system (Ext2fs), a file is deleted when the inode internal link count reaches ____.

- A. 10
- B. 100
- C. 1

Answer: A

NEW QUESTION 657

- (Exam Topic 1)

What type of attack occurs when an attacker can force a router to stop forwarding packets by flooding the router with many open connections simultaneously so that all the hosts behind the router are effectively disabled?

- A. digital attack
- B. denial of service
- C. physical attack
- D. ARP redirect

Answer: B

NEW QUESTION 660

- (Exam Topic 1)

You are conducting an investigation of fraudulent claims in an insurance company that involves complex text searches through large numbers of documents. Which of the following tools would allow you to quickly and efficiently search for a string within a file on the bitmap image of the target computer?

- A. Stringsearch
- B. grep
- C. dir
- D. vim

Answer: B

NEW QUESTION 662

- (Exam Topic 1)

In what way do the procedures for dealing with evidence in a criminal case differ from the procedures for dealing with evidence in a civil case?

- A. evidence must be handled in the same way regardless of the type of case
- B. evidence procedures are not important unless you work for a law enforcement agency
- C. evidence in a criminal case must be secured more tightly than in a civil case
- D. evidence in a civil case must be secured more tightly than in a criminal case

Answer: C

NEW QUESTION 663

.....

Thank You for Trying Our Product

We offer two products:

1st - We have Practice Tests Software with Actual Exam Questions

2nd - Questions and Answers in PDF Format

312-49v10 Practice Exam Features:

- * 312-49v10 Questions and Answers Updated Frequently
- * 312-49v10 Practice Questions Verified by Expert Senior Certified Staff
- * 312-49v10 Most Realistic Questions that Guarantee you a Pass on Your FirstTry
- * 312-49v10 Practice Test Questions in Multiple Choice Formats and Updatesfor 1 Year

100% Actual & Verified — Instant Download, Please Click
[Order The 312-49v10 Practice Test Here](#)