

Cisco

Exam Questions 350-901

Developing Applications using Cisco Core Platforms & APIs



NEW QUESTION 1

A developer has created an application based on customer requirements. The customer needs to run the application with the minimum downtime. Which design approach regarding high-availability applications, Recovery Time Objective, and Recovery Point Objective must be taken?

- A. Active/passive results in lower RTO and RP
- B. For RPO, data synchronization between the two data centers must be timely to allow seamless request flow.
- C. Active/passive results in lower RTO and RP
- D. For RPO, data synchronization between the two data centers does not need to be timely to allow seamless request flow.
- E. Active/active results in lower RTO and RP
- F. For RPO, data synchronization between the two data centers does not need to be timely to allow seamless request flow.
- G. Active/active results in lower RTO and RP
- H. For RPO, data synchronization between the two data centers must be timely to allow seamless request flow.

Answer: A

NEW QUESTION 2

A cloud native project is being worked on in which all source code and dependencies are written in Python, Ruby, and/or JavaScript. A change in code triggers a notification to the CI/CD tool to run the CI/CD pipeline.

Which step should be omitted from the pipeline?

- A. Deploy the code to one or more environments, such as staging and/or production.
- B. Build one of more containers that package up code and all its dependencies.
- C. Compile code.
- D. Run automated tests to validate the correctness.

Answer: A

NEW QUESTION 3

Which two statements are considered best practices according to the 12-factor app methodology for application design? (Choose two.)

- A. Application code writes its event stream to stdout.
- B. Application log streams are archived in multiple replicated databases.
- C. Application log streams are sent to log indexing and analysis systems.
- D. Application code writes its event stream to specific log files.
- E. Log files are aggregated into a single file on individual nodes.

Answer: AD

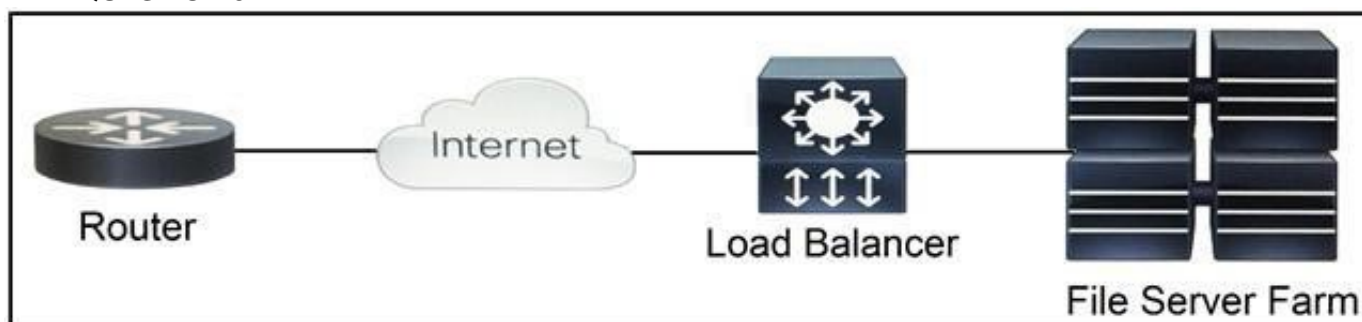
NEW QUESTION 4

Which two situations are flagged by software tools designed for dependency checking in continuous integration environments, such as OWASP? (Choose two.)

- A. publicly disclosed vulnerabilities related to the included dependencies
- B. mismatches in coding styles and conventions in the included dependencies
- C. incompatible licenses in the included dependencies
- D. test case failures introduced by bugs in the included dependencies
- E. buffer overflows to occur as the result of a combination of the included dependencies

Answer: AE

NEW QUESTION 5



Refer to the exhibit. Which two functions are performed by the load balancer when it handles traffic originating from the Internet destined to an application hosted on the file server farm? (Choose two.)

- A. Terminate the TLS over the UDP connection from the router and originate an HTTPS connection to the selected server.
- B. Terminate the TLS over the UDP connection from the router and originate an HTTP connection to the selected server.
- C. Terminate the TLS over the TCP connection from the router and originate an HTTP connection to the selected server.
- D. Terminate the TLS over the TCP connection from the router and originate an HTTPS connection to the selected server.
- E. Terminate the TLS over the SCTP connection from the router and originate an HTTPS connection to the selected server.

Answer: DE

NEW QUESTION 6

```
import request
import json

meraki_api_key = "<api key>"
url =
"https://api.meraki.com/api/v0/organizations/12345567890/devices"
headers = {
    "X-Cisco-Meraki-API-Key": meraki_api_key,
}
params = {
    "perPage": 3
}
res = requests.get(url, headers=headers, params=params)
formatted_message = """
Meraki Dashboard API Response
-----
Response Status Code : {}
Response Link Header : {}
Response Body        : {}
-----
""".format(res.status_code, res.headers.get('Link'),
json.dumps(res.json(), indent=4))
print(formatted_message)
```

```
<https://n6.meraki.com/api/v0/organizations/1234567890/devices?perPage=
3&startingAfter=0000-0000-0000>; rel=first,
<https://n6.meraki.com/api/v0/organizations/1234567890/devices?perPage=
3&startingAfter=Q2EK-3UBE-RRUY>; rel=next,
<https://n6.meraki.com/api/v0/organizations/1234567890/devices?
endingBefore=zzzz-zzzz-zzzz&perPage=3>; rel=last
```

Refer to the exhibit. Which line of code must be added to this code snippet to allow an application to pull the next set of paginated items?

- A. requests.get(url, links=['next']['url'])
- B. requests.get(url, headers=links['next']['url'])
- C. requests.get(res.links['next']['url'], headers=headers)
- D. requests.get(res.headers.get('Link')['next']['url'], headers=headers)

Answer: C

NEW QUESTION 7

An Etag header is included in the HTTP response for an API resource. What are two benefits of using the value of the Etag for future interactions involving the same API resource? (Choose two.)

- A. caching and optimization of response payloads
- B. creating conditional requests
- C. categorizing and comparing this API resource with others
- D. checking the integrity of the resource
- E. requesting the list of operations authorized for this resource

Answer: AB

NEW QUESTION 8

A client is written that uses a REST API to interact with a server. Using HTTPS as the transport, an HTTP request is sent and received an HTTP response. The response contains the HTTP response status code: 503 Service Unavailable. Which action is the appropriate response?

- A. Add an Authorization header that supplies appropriate credentials and sends the updated request.
- B. Resend the request using HTTP as the transport instead of HTTPS.
- C. Add an Accept header that indicates the content types that the client understands and send the updated request.
- D. Look for a Retry-After header in the response and resend the request after the amount of time indicated.

Answer: A

NEW QUESTION 9

Which snippet presents the correct API call to configure, secure, and enable an SSID using the Meraki API?

- A.

```
curl -X PUT \  
--url 'https://api.meraki.com/api/v0/networks/:networkId/ssids/2' \  
-H 'X-Cisco-Meraki-API-Key: 15da0c6ffff295f16267f88f98694cf29a86ed87' \  
-H 'Accept: application/json' \  
-H 'Content-type: application/json' \  
--data-raw '{  
  "name": "My SSID",  
  "enabled": false,  
  "authMode": "psk",  
  "encryptionMode": "wpa",  
  "psk": "meraki123",  
  "wpaEncryptionMode": "WPA1 and WPA2"  
}'
```

B.

```
curl -X PUT \  
--url 'https://api.meraki.com/api/v0/networks/:networkId/ssids/2' \  
-H 'X-Cisco-Meraki-API-Key: 15da0c6ffff295f16267f88f98694cf29a86ed87' \  
-H 'Accept: application/json' \  
-H 'Content-type: application/json' \  
--data-raw '{  
  "name": "My SSID",  
  "enabled": true,  
  "authMode": "psk",  
  "encryptionMode": "wpa",  
  "psk": "meraki123",  
  "wpaEncryptionMode": "WPA1 and WPA2"  
}'
```

C.

```
curl -X PUT \  
--url 'https://api.meraki.com/api/v0/networks/:networkId/ssids/2' \  
-H 'X-Cisco-Meraki-API-Key: 15da0c6ffff295f16267f88f98694cf29a86ed87' \  
-H 'Accept: application/json' \  
-H 'Content-type: application/json' \  
--data-raw '{  
  "enabled": true,  
  "useVlanTagging": true  
}'
```

D.

```
curl -X PUT \  
--url 'https://api.meraki.com/api/v0/networks/:networkId/ssids/2' \  
-H 'X-Cisco-Meraki-API-Key: 15da0c6ffff295f16267f88f98694cf29a86ed87' \  
-H 'Accept: application/json' \  
-H 'Content-type: application/json' \  
--data-raw '{  
  "name": "My SSID",  
  "enabled": true,  
}'
```

Answer: B

NEW QUESTION 10

Which two types of storage are supported for app hosting on a Cisco Catalyst 9000 Series Switch? (Choose two.)

- A. external USB storage
- B. internal SSD
- C. CD-ROM
- D. SD-card
- E. bootflash

Answer: AB

NEW QUESTION 10


```
import http.client

conn = http.client.HTTPSConnection("dnac.cisco.com")

headers = {
    '__runsync': "true",
    '__timeout': "30",
    '__persistbapioutput': "true",
}

conn.request("□", "/dna/intent/api/v1/□?timestamp=10000", headers=headers)

res = conn.getresponse()
data = res.read()

print(data.decode("utf-8"))
```

Refer to the exhibit. Which configuration of method and parameter retrieves the health of a laptop connected to the network from Cisco DNA Center?

- A. PUT; network-health;
- B. GET; client-health;
- C. GET; network-device;
- D. POST; network-device;

Answer: C

NEW QUESTION 14

```
headers = ( )
try:
    response = requests.get("https://sandboxdnac.cisco.com/dna/intent/api/v1/wireless/profile",
        headers=headers, verify=False)
except requests.exceptions.RequestException as cerror:
    print("Error processing request", cerror)
    sys.exit(1)
```

Refer to the exhibit. Which code snippet is required in the headers to successfully authorize wireless information from Cisco DNA Center?

- A. headers = {'X-auth-token': 'fa8426a0-8eaf-4d22-8e13-7c1b16a9370c'} B.headers = {'Authorization': 'Basic YWRtaW46R3JhcGV2aW5IMQ=='}
- B. headers = {'Authorization': 'Bearer ASDNFALKJER23412RKDALSNKF'}
- C. headers = {'Content-type': 'application/json'}

Answer: A

NEW QUESTION 15

What is submitted when an SSL certificate is requested?

- A. PEM
- B. CRT
- C. DER
- D. CSR

Answer: D

NEW QUESTION 17

Which two countermeasures help reduce the risk of playback attacks? (Choose two.)

- A. Store data in a NoSQL database.
- B. Implement message authentication (HMAC).
- C. Enable end-to-end encryption.
- D. Remove stack traces from errors.
- E. Use short-lived access tokens.

Answer: BE

NEW QUESTION 22

Which two strategies are used to protect personally identifiable information? (Choose two.)

- A. Encrypt data in transit.
- B. Encrypt hash values of data.
- C. Encrypt data at rest.
- D. Only hash usernames and passwords for efficient lookup.
- E. Only encrypt usernames and passwords for efficient lookup.

Answer: AB

NEW QUESTION 25

```
open_file = open("text_file.txt", "r")
read_file = open_file.read()
print(read_file)
```

Refer to the exhibit. a developer created the code, but it fails to execute. Which code snippet helps to identify the issue?

- A. `try:`
`open_file = open("text_file.txt", "r")`
`read_file = open_file.read()`
`print(read_file)`
`except:`
`print("File not there")`
- B. `try:`
`print("File not there")`
`except:`
`open_file = open("text_file.txt", "r")`
`read_file = open_file.read()`
`print(read_file)`
- C. `try:`
`open_file = open("text_file.txt", "r")`
`read_file = open_file.read()`
`print(read_file)`
`except:`
`print("File not there")`
`catch:`
`error(read_file)`
- D. `open_file = open("text_file.txt", "r")`
`read_file = open_file.read()`
`try:`
`print(read_file)`
`except:`
`print("File not there")`

Answer: C

NEW QUESTION 29

An automated solution is needed to configure VMs in numerous cloud provider environments to connect the environments to an SDWAN. The SDWAN edge VM is provided as an image in each of the relevant clouds and can be given an identity and all required configuration via cloud-init without needing to log into the VM once online.

Which configuration management and/or automation tooling is needed for this solution?

- A. Ansible
 B. Ansible and Terraform
 C. NSO
 D. Terraform
 E. Ansible and NSO

Answer: E

NEW QUESTION 34

```
---
- name: IOS XE Configuration
  hosts: ios_xe
  connection: local
  gather_facts: false

  tasks:
  - name: IOS NTP
    ios_ntp:
      provider: "{{ creds }}"
      server: 10.0.255.10
      source_int: GigabitEthernet2
      logging: false
```

Refer to the exhibit. Which key value pair from the ios_ntp Ansible module creates an NTP server peer?

- A. state: present

- B. state: True
- C. config: present
- D. config: True

Answer: A

NEW QUESTION 36

A developer needs to configure an environment to orchestrate and configure. Which two tools should be used for each task? (Choose two.)

- A. Puppet for orchestration
- B. Terraform for orchestration
- C. Terraform for configuration
- D. Ansible for orchestration
- E. Ansible for configuration

Answer: BE

NEW QUESTION 40

.....

Thank You for Trying Our Product

We offer two products:

1st - We have Practice Tests Software with Actual Exam Questions

2nd - Questions and Answers in PDF Format

350-901 Practice Exam Features:

- * 350-901 Questions and Answers Updated Frequently
- * 350-901 Practice Questions Verified by Expert Senior Certified Staff
- * 350-901 Most Realistic Questions that Guarantee you a Pass on Your First Try
- * 350-901 Practice Test Questions in Multiple Choice Formats and Updates for 1 Year

100% Actual & Verified — Instant Download, Please Click
[Order The 350-901 Practice Test Here](#)