

# Microsoft

## Exam Questions 98-361

Microsoft MTA Software Development Fundamentals



#### NEW QUESTION 1

- (Topic 1)

Which type of application has the following characteristics when it is installed?

? Runs continuously in the background by default when the startup type is set to automatic

? Presents no user interface

- A. Windows Service
- B. Windows Forms
- C. Console-based
- D. Batch file

**Answer:** A

#### **Explanation:**

A Windows service runs in the background and has no interface.

#### NEW QUESTION 2

- (Topic 1)

You are creating a routine that will perform calculations by using a repetition structure. You need to ensure that the entire loop executes at least once.

Which looping structure should you use?

- A. For
- B. While
- C. Do„While
- D. Fo
- E. „Each

**Answer:** :C

#### **Explanation:**

In a Do..While loop the test is at the end of the structure, so it will be executed at least once.

#### NEW QUESTION 3

- (Topic 1)

You are developing a webpage that enables students to manage races.

The webpage will display two lists: past races and upcoming races. The page also contains a sidebar with contact information and a panel with social media settings that can be edited. Race results can be shared on social media.

How many components will be on the webpage?

- A. 2
- B. 3
- C. 4
- D. 5

**Answer:** C

#### NEW QUESTION 4

- (Topic 1)

The elements of an array must be accessed by:

- A. Calling the item that was most recently inserted into the array.
- B. Calling the last item in the memory array.
- C. Using an integer index.
- D. Using a first-in, last-out (FILO) process.

**Answer:** C

#### NEW QUESTION 5

- (Topic 1)

This question requires that you evaluate the underlined text to determine if it is correct. Converting an object to a more general type is called upcasting.

Select the correct answer if the underlined text does not make the statement correct. Select "No change is needed" if the underlined text makes the statement correct.

- A. No change is needed
- B. downcasting
- C. interfacing
- D. flexing

**Answer:** :A

#### **Explanation:**

Casting up a hierarchy means casting from a derived object reference to a base object reference.

#### NEW QUESTION 6

- (Topic 1)

You are creating a database for a student directory. The Students table contains the following fields:

firstName  
lastName  
emailAddress  
telephoneNumber

Which statement will retrieve only the first name, last name, and telephone number for every student listed in the directory?

- A. WHERE Students SELECT \*
- B. SELECT firstName, lastName, telephoneNumber FROM Students
- C. SELECT firstName, lastName, telephoneNumber IN Students
- D. SELECT \* FROM Students
- E. WHERE Students SELECT firstName, lastName, telephoneNumber

Answer: B

Explanation:

Use SELECT??FROM and list the fields you want to retrieve.

NEW QUESTION 7

HOTSPOT - (Topic 1)

For each of the following statements, select Yes if the statement is true. Otherwise, select No. Each correct selection is worth one point.

Answer Area

Test Behavior	Yes	No
The primary goal of unit testing is to take the smallest piece of testable software in the application, isolate it from the remainder of the code, and determine whether it behaves exactly as expected.	<input type="radio"/>	<input type="radio"/>
In unit testing, each unit is tested separately before integrating the units into modules to test the interfaces between modules.	<input type="radio"/>	<input type="radio"/>
The driver that you use in unit testing simulates a calling unit and the stub simulates a called unit.	<input type="radio"/>	<input type="radio"/>

- A. Mastered
- B. Not Mastered

Answer: A

Explanation:

Answer Area

Test Behavior	Yes	No
The primary goal of unit testing is to take the smallest piece of testable software in the application, isolate it from the remainder of the code, and determine whether it behaves exactly as expected.	<input checked="" type="radio"/>	<input type="radio"/>
In unit testing, each unit is tested separately before integrating the units into modules to test the interfaces between modules.	<input checked="" type="radio"/>	<input type="radio"/>
The driver that you use in unit testing simulates a calling unit and the stub simulates a called unit.	<input checked="" type="radio"/>	<input type="radio"/>

NEW QUESTION 8

- (Topic 1)

The following functions are defined:

```
private static int Printer(int j)
{
    for (var i = j; i > 0; i = Printer(i - 1))
    {
        Console.Write(i);
    }
    return j;
}
```

What does the console display after the following line? Printer(2);

- A. 210
- B. 211
- C. 2101
- D. 2121

**Answer:** B

#### NEW QUESTION 9

- (Topic 1)

This question requires that you evaluate the underlined text to determine if it is correct.

The bubble sort algorithm steps through the list to be sorted, comparing adjacent items and swapping them if they are in the wrong order

Select the correct answer if the underlined text does not make the statement correct. Select "No change is needed" if the underlined text makes the statement correct.

- A. No change is needed
- B. merge
- C. library
- D. insertion

**Answer:** :A

#### NEW QUESTION 10

- (Topic 1)

How should you configure an application to consume a Web service?

- A. Add the Web service to the development computer.
- B. Add a reference to the Web service in the application.
- C. Add a reference to the application in the Web service.
- D. Add the Web service code to the application.

**Answer:** B

#### Explanation:

Start by adding a Service Reference to the project. Right-click the ConsoleApplication1 project and choose ??Add Service Reference??:

#### NEW QUESTION 10

- (Topic 1)

You execute the following code.

```
bool beakerFull = true;
bool flameOn = false;
int iResult;

switch (beakerFull)
{
    case true:
        switch (flameOn)
        {
            case true:
                iResult = 1;
                break;
            case false:
                iResult = 2;
                break;
        }
        break;
    case false:
        switch (flameOn)
        {
            case false:
                iResult = 3;
                break;
            case true:
                iResult = 4;
                break;
        }
        break;
}
```

What will the variable result be?

- A. 1
- B. 2
- C. 3
- D. 4

**Answer:** B

#### NEW QUESTION 11

- (Topic 1)

What does the Console.Error property do within a console-based application?

- A. sets the standard error input stream
- B. gets the standard error output stream
- C. gets the standard error input stream
- D. sets the standard error output stream

**Answer:** B

#### Explanation:

The Console.Error property gets the standard error output stream.

#### NEW QUESTION 16

- (Topic 1)

What are the three basic states that a Windows service can be in? (Choose three.)

- A. halted
- B. running
- C. stopped
- D. paused
- E. starting

**Answer:** BCD

#### Explanation:

A service can exist in one of three basic states: Running, Paused, or Stopped.

#### NEW QUESTION 21

- (Topic 1)

In this XHTML code sample, what will cause an error?

```
<!DOCTYPE html PUBLIC "-//W3C//DTD XHTML 1.0 Strict//EN" "http://www.w3.org/TR/xhtml1/DTD/xhtml1-strict.dtd">
<html xmlns="http://www.w3.org/1999/xhtml" lang="en" xml:lang="en">
  <head>
    <title>The Title</title>
  </head>
  <body>
    <h1>This is a Heading.</h1>
    <p>This is a paragraph</p><br>
  </body>
</html>
```

- A. All tags are not in uppercase.
- B. The body tag is missing a background attribute.
- C. The line break tag is incorrectly formatted.
- D. The HTML tags do not read XHTML.

**Answer:** C

**Explanation:**

In XHTML, the <br> tag must be properly closed, like this: <br />.

**NEW QUESTION 23**

- (Topic 1)

Which function does Simple Object Access Protocol (SOAP) provide when using Web services?

- A. directory of registered Web services
- B. communications protocol
- C. security model
- D. model for describing Web services

**Answer:** B

**Explanation:**

SOAP, originally defined as Simple Object Access Protocol, is a protocol specification for exchanging structured information in the implementation of web services in computer networks. It relies on XML Information Set for its message format, and usually relies on other application layer protocols, most notably Hypertext Transfer Protocol (HTTP) or Simple Mail Transfer Protocol (SMTP), for message negotiation and transmission.

**NEW QUESTION 26**

- (Topic 1)

In the life cycle of an ASP. NET Web page, which phase follows the SaveStateComplete phase?

- A.PostBack
- B. PostInit
- C. Load
- D. Render

**Answer:** D

**Explanation:**

The SaveStateComplete event is raised after the view state and control state of the page and controls on the page are saved to the persistence medium. This is the last event raised before the page is rendered to the requesting browser.

**NEW QUESTION 28**

- (Topic 1)

You are creating an application that presents the user with a Windows Form. You need to configure the application to display a message box to confirm that the user wants to close the form.

Which event should you handle?

- A. Deactivate
- B. Leave
- C. FormClosed
- D. FormClosing

**Answer:** D

**Explanation:**

The Closing event occurs as the form is being closed.

**NEW QUESTION 33**

- (Topic 1)

Which language allows you to dynamically create content on the client side?

- A. Extensible Markup Language (XML)
- B. Cascading Style Sheets (CSS)
- C. Hypertext Markup Language (HTML)
- D. JavaScript (JS)

**Answer:** D

**Explanation:**

JavaScript (JS) is a dynamic computer programming language. It is most commonly used as part of web browsers, whose implementations allow client-side

scripts to interact with the user, control the browser, communicate asynchronously, and alter the document content that is displayed.

#### NEW QUESTION 37

- (Topic 1)

What are two advantages of normalization in a database? (Choose two)

- A. prevents data inconsistencies
- B. reduces schema limitations
- C. minimizes impact of data corruption
- D. decreases space used on disk

**Answer:** AD

#### NEW QUESTION 40

- (Topic 1)

You need to create an application that processes data on a last-in, first-out (LIFO) basis. Which data structure should you use?

- A. Queue
- B. Tree
- C. Stack
- D. Array

**Answer:** C

#### Explanation:

A stack implements LIFO.

#### NEW QUESTION 45

- (Topic 1)

You are designing a class for an application. You need to restrict the availability of the member variable `accessCount` to the base class and to any classes that are derived from the base class.

Which access modifier should you use?

- A. Internal
- B. Protected
- C. Private
- D. Public

**Answer:** C

#### NEW QUESTION 46

- (Topic 1)

You are designing a Windows Store application.

You need to design the application so that users can share content by connecting two or more devices by physically tapping the devices together.

Which user experience (UX) guideline for Windows Store applications should you use?

- A. Share and data exchange
- B. location-awareness
- C. device-awareness
- D. proximity gestures

**Answer:** A

#### NEW QUESTION 50

- (Topic 1)

You are creating an application for computers that run Windows XP or later. This application must run after the computer starts. The user must not be aware that the application is running.

The application performs tasks that require permissions that the logged-in user does not have.

Which type of application allows this behavior?

- A. Windows Service application
- B. Windows Forms application
- C. DOS batch file
- D. Terminate-and-stay-resident (TSR) program

**Answer:** A

#### NEW QUESTION 54

DRAG DROP - (Topic 1)

You are developing an application to display track and field race results.

The application must display the race results twice. The first time it must display only the winner and runner-up. The second time it must display all participants.

The code used to display results is shown below.

```
public void Display()
{
    // display top two
    foreach (var ranking in Rankings(true))
    {

        DisplayName(ranking);
    }

    // display all
    foreach (var ranking in Rankings(false))
    {
        DisplayName(ranking);
    }
}
```

You need to implement the Rankings() function.  
Complete the function to meet the requirements. {To answer, drag the appropriate code segment from the column on the left to its location on the right. Each code segment may be used once, more than once, or not at all. Each correct match is worth one point.)

Code Segments	Answer Area
<div>break</div>	<pre>private IEnumerable&lt;string&gt; Rankings(bool top2Only) {</pre>
<div>return</div>	<div>Code Segment"John";</div>
<div>yield break</div>	<div>Code Segment"Nancy";</div>
<div>yield return</div>	<pre>if (top2Only)</pre>
	<div>Code Segment;</div>
	<div>Code Segment"Chris";</div>
	<pre>}</pre>

- A. Mastered
- B. Not Mastered

Answer: A

Explanation:

Code Segments	Answer Area
<div>break</div>	<pre>private IEnumerable&lt;string&gt; Rankings(bool top2Only) {</pre>
<div>return</div>	<div>yield return"John";</div>
<div>yield break</div>	<div>yield return"Nancy";</div>
<div>yield return</div>	<pre>if (top2Only)</pre>
	<div>yield break;</div>
	<div>yield return"Chris";</div>
	<pre>}</pre>

NEW QUESTION 59

- (Topic 1)  
You are migrating several HTML pages to your website. Many of these pages contain HTML <center> and <font> tags. Which XHTML document type declaration should you use?

- A. <!DOCTYPE HTML PUBLIC "-//W3C//DTD HTML 4.01 Transitional//EN" "http://www.w3.org/TR/html4/loose.dtd">
- B. <!DOCTYPE html>
- C. <!DOCTYPE html PUBLIC "-//W3C//DTD XHTML 1.0 Frameset//EN" "http://www.w3.org/TR/xhtml1/DTD/xhtml1-frameset.dtd">
- D. <!DOCTYPE html PUBLIC "-//W3C//DTD XHTML 1.0 Strict//EN" "http://www.w3.org/TR/xhtml1/DTD/xhtml1-strict.dtd">

- A. Option A
- B. Option B
- C. Option C
- D. Option D

**Answer:** A

**Explanation:**

The <!DOCTYPE> declaration is not an HTML tag; it is an instruction to the web browser about what version of HTML the page is written in.

XHTML 1.0 Transitional

This DTD contains all HTML elements and attributes, INCLUDING presentational and deprecated elements (like font). Framesets are not allowed. The markup must also be written as well-formed XML.

<!DOCTYPE html PUBLIC "-//W3C//DTD XHTML 1.0 Transitional//EN" "http://www.w3.org/TR/xhtml1/DTD/xhtml1-transitional.dtd">

**NEW QUESTION 60**

- (Topic 1)

This question requires that you evaluate the underlined text to determine if it is correct.

The Response.Redirect method is used to transfer processing of the current page to a new page, and then return processing back to the calling page once processing of the new page has completed.

Select the correct answer if the underlined text does not make the statement correct. Select "No change is needed" if the underlined text makes the statement correct.

- A. No change is needed
- B. Server.Transfer method
- C. Server.Execute method
- D. meta http-equiv="refresh" tag

**Answer:** C

**Explanation:**

The Execute method calls an .asp file, and processes it as if it were part of the calling ASP script. The Execute method is similar to a procedure call in many programming languages.

Incorrect:

\* Response.Redirect Method

The Redirect method causes the browser to redirect the client to a different URL.

\* The Server.Transfer method sends all of the information that has been assembled for processing by one .asp file to a second .asp file.

**NEW QUESTION 61**

- (Topic 1)

You have a Windows Service running in the context of an account that acts as a non- privileged user on the local computer. The account presents anonymous credentials to any remote server.

What is the security context of the Windows Service?

- A. LocalSystem
- B. User
- C. NetworkService
- D. LocalService

**Answer:** D

**Explanation:**

LocalService , which runs in the context of an account that acts as a non- privileged user on the local computer, and presents anonymous credentials to any remote server;

**NEW QUESTION 62**

- (Topic 1)

This question requires that you evaluate the underlined text to determine if it is correct. To improve performance, a SQL SELECT statement should use indexes.

Select the correct answer if the underlined text does not make the statement correct. Select "No change is needed" if the underlined text makes the statement correct.

- A. No change is needed
- B. joins
- C. grouping
- D. ordering

**Answer:** A

**NEW QUESTION 67**

- (Topic 1)

This question requires that you evaluate the underlined text to determine if it is correct.

The process of transforming compiled C# code into an XML string for a web service is known as deserialization.

Select the correct answer if the underlined text does not make the statement correct. Select "No change is needed" if the underlined text makes the statement correct.

- A. No change is needed
- B. serialization
- C. decoding
- D. encoding

**Answer:** B

**Explanation:**

Serialization is the process of converting an object into a stream of bytes in order to store the object or transmit it to memory, a database, or a file. Its main purpose is to save the state of an object in order to be able to recreate it when needed.

Serialization allows the developer to save the state of an object and recreate it as needed, providing storage of objects as well as data exchange. Through serialization, a developer can perform actions like sending the object to a remote application by means of a Web Service, passing an object from one domain to another, passing an object through a firewall as an XML string, or maintaining security or user-specific information across applications.

**NEW QUESTION 70**

- (Topic 1)

You plan to create an application for your company. The application will run automated routines and write the results to a text-based log file. Little or no user interaction is required.

Security requirements on the host computers prevent you from running applications on startup, and users must be able to see the status easily on the screen. The host computers also have limited memory and monitors that display only two colors. These computers will have no network connectivity.

Which type of application should you use for this environment?

- A. Directx
- B. Windows Service
- C. console-based
- D. Windows Store app

**Answer: C**

**Explanation:**

Building Console Applications

Applications in the .NET Framework can use the System.Console class to read characters from and write characters to the console. Data from the console is read from the standard input stream, data to the console is written to the standard output stream, and error data to the console is written to the standard error output stream.

**NEW QUESTION 75**

- (Topic 1)

You have a table named ITEMS with the following fields:

? ID (integer, primary key, auto generated)

? Description (text)

? Completed (Boolean)

You need to insert the following data in the table:

"Cheese", False

Which statement should you use?

- A. INSERT INTO ITEMS (ID, Description, Completed) VALUES (1, 'Cheese', 0)
- B. INSERT INTO ITEMS (Description, Completed) VALUES ('Cheese', 1)
- C. INSERT INTO ITEMS (10, Description, Completed) VALUES (NEWID(), 'Cheese', 6)
- D. INSERT INTO ITEMS (Description, Completed) VALUES ('Cheese', 0)

**Answer: D**

**Explanation:**

The string values TRUE and FALSE can be converted to bit values: TRUE is converted to 1 and FALSE is converted to 0.

Incorrect:

Not A, not C: ID is autogenerated and should not be specified.

**NEW QUESTION 80**

- (Topic 1)

You need to group all the style settings into a separate file that can be applied to all the pages in a Web application.

What should you do?

- A. Use a Cascading Style Sheet (CSS).
- B. Use inline styles.
- C. Use an Extensible Markup Language (XML) schema.
- D. Use a WebKit.

**Answer: A**

**Explanation:**

Cascading Style Sheets (CSS) is a style sheet language used for describing the look and formatting of a document written in a markup language.

CSS is designed primarily to enable the separation of document content from document presentation, including elements such as the layout, colors, and fonts.

**NEW QUESTION 84**

- (Topic 1)

Which type of Windows application presents a parent window that contains child windows?

- A. Application programming interface (API)
- B. Single-document interface (SDI)
- C. Multiple-document interface (MDI)
- D. Command-line interface (CLI)

**Answer: C**

**Explanation:**

A multiple document interface (MDI) is a graphical user interface in which multiple windows reside under a single parent window. Such systems often allow child windows to embed other windows inside them as well, creating complex nested hierarchies. This contrasts with single document interfaces (SDI) where all windows are independent of each other.

**NEW QUESTION 88**

- (Topic 1)  
You execute the following code.

```
for(int i = 0; i <= 10; i+= 2)
{
    Console.WriteLine("Hello");
}
```

How many times will the word Hello be printed?

- A. 5
- B. 6
- C. 10
- D. 12

**Answer:** B

**NEW QUESTION 93**

- (Topic 1)  
This question requires that you evaluate the underlined text to determine if it is correct.  
Internet Information Services (IIS) must be installed on the client computers in order to run a deployed ASP.NET application.  
Select the correct answer if the underlined text does not make the statement correct. Select "No change is needed" if the underlined text makes the statement correct.

- A. No change is needed
- B. computer that hosts the application
- C. computer that you plan to deploy from
- D. Application Layer Gateway Service

**Answer:** B

**Explanation:**  
Internet Information Services (IIS) must be installed on computer that hosts the application in order to run a deployed ASP.NET application.

**NEW QUESTION 98**

- (Topic 1)  
You need to debug a Windows Service application by using breakpoints. What should you do?

- A. Write all events to an event log.
- B. Set the Windows Service status to Paused.
- C. Implement the Console.WriteLine method throughout the Windows Service.
- D. Use the Attach to Process menu in Microsoft Visual Studio.

**Answer:** D

**Explanation:**  
\* Because a service must be run from within the context of the Services Control Manager rather than from within Visual Studio, debugging a service is not as straightforward as debugging other Visual Studio application types. To debug a service, you must start the service and then attach a debugger to the process in which it is running.  
\* To debug a service Install your service.  
Start your service, either from Services Control Manager, Server Explorer, or from code. In Visual Studio, choose Attach to Process from the Debug menu.  
Etc.

**NEW QUESTION 99**

HOTSPOT - (Topic 1)  
You have a base class named Tree with a friend property named color and a protected property named NumberOfLeaves. In the same project, you also have a class named Person.  
For each of the following statements, select Yes if the statement is true. Otherwise, select No. Each correct selection is worth one point.

**Answer Area**

Description of Behavior	Yes	No
Methods in the Person class can access the color property.	<input type="radio"/>	<input type="radio"/>
Methods in the Person class can access the NumberOfLeaves property.	<input type="radio"/>	<input type="radio"/>
Methods in the Tree class can access all private properties in Person.	<input type="radio"/>	<input type="radio"/>

- A. Mastered
- B. Not Mastered

**Answer:** A

**Explanation:**

**Answer Area**

Description of Behavior	Yes	No
Methods in the Person class can access the color property.	<input checked="" type="radio"/>	<input type="radio"/>
Methods in the Person class can access the NumberOfLeaves property.	<input type="radio"/>	<input checked="" type="radio"/>
Methods in the Tree class can access all private properties in Person.	<input type="radio"/>	<input checked="" type="radio"/>

**NEW QUESTION 104**

- (Topic 1)

The purpose of the Catch section in an exception handler is to:

- A. Break out of the error handler.
- B. Conclude the execution of the application.
- C. Execute code only when an exception is thrown.
- D. Execute code regardless of whether an exception is thrown.

**Answer:** C

**NEW QUESTION 109**

- (Topic 1)

You have a class named Glass that inherits from a base class named Window. The Window class includes a protected method named break(). How should you call the Glass class implementation of the break() method?

- A. Window.break();
- B. Glass.break();
- C. this.break();
- D. base.break();

**Answer:** A

**NEW QUESTION 113**

- (Topic 1)

You are creating a Web application. The application will be consumed by client computers that run a variety of Web browsers. Which term is used to describe the process of making the application available for client computers to access?

- A. Casting
- B. Deploying
- C. Hosting
- D. Virtualization

**Answer:** C

**Explanation:**

You host web applications.

**NEW QUESTION 116**

- (Topic 1)

You are creating an application that accepts input and displays a response to the user. You cannot create a graphical interface for this application. Which type of application should you create?

- A. Windows Forms
- B. Windows Service
- C. Web-based
- D. Console-based

**Answer:** C

**NEW QUESTION 119**

- (Topic 1)

An application presents the user with a graphical interface. The interface includes buttons that the user clicks to perform tasks. Each time the user clicks a button, a method is called that corresponds to that button. Which term is used to describe this programming model?

- A. Functional
- B. Service oriented
- C. Structured
- D. Event driven

**Answer: D**

#### NEW QUESTION 124

- (Topic 1)

This question requires that you evaluate the underlined text to determine if it is correct.

When a base class declares a method as virtual, the method is hidden from implementation by a derived class.

Select the correct answer if the underlined text does not make the statement correct. Select "No change is needed" if the underlined text makes the statement correct.

- A. No change is needed
- B. can be overridden with its own implementation by a derived class
- C. must be overridden in any non-abstract class that directly inherits from that class
- D. cannot be overridden with its own implementation by a derived class

**Answer: B**

#### Explanation:

The implementation of a non-virtual method is invariant: The implementation is the same whether the method is invoked on an instance of the class in which it is declared or an instance of a derived class. In contrast, the implementation of a virtual method can be superseded by derived classes. The process of superseding the implementation of an inherited virtual method is known as overriding that method.

#### NEW QUESTION 127

- (Topic 1)

What is displayed when you attempt to access a Web service by using a Web browser?

- A. a listing of methods that are available in the Web service
- B. a directory listing of the Web service's application structure
- C. an error page explaining that you have accessed the Web service incorrectly
- D. a visual depiction of your preliminary connection to the Web service

**Answer: A**

#### Explanation:

The server, in response to this request, displays the Web service's HTML description page.

The Web service's HTML description page shows you all the Web service methods supported by a particular Web service. Link to the desired Web service method and enter the necessary parameters to test the method and see the XML response.

#### NEW QUESTION 130

- (Topic 1)

Your application must pull data from a database that resides on a separate server.

Which action must you perform before your application can retrieve the data?

- A. Configure the network routers to allow database connections.
- B. Install the database on each client computer.
- C. Create a routine that bypasses firewalls by using Windows Management Instrumentation (WMI).
- D. Establish a connection to the database by using the appropriate data provider.

**Answer: D**

#### NEW QUESTION 135

HOTSPOT - (Topic 1)

For each of the following statements, select Yes if the statement is true. Otherwise, select No. Each correct selection is worth one point.

## Answer Area

Description of Behavior	Yes	No
A linked list has a maximum of 100 nodes.	<input type="radio"/>	<input type="radio"/>
You can add new nodes anywhere in a linked list.	<input type="radio"/>	<input type="radio"/>
A linked list can be sorted.	<input type="radio"/>	<input type="radio"/>

- A. Mastered  
B. Not Mastered

Answer: A

Explanation:

## Answer Area

Description of Behavior	Yes	No
A linked list has a maximum of 100 nodes.	<input type="radio"/>	<input checked="" type="radio"/>
You can add new nodes anywhere in a linked list.	<input checked="" type="radio"/>	<input type="radio"/>
A linked list can be sorted.	<input checked="" type="radio"/>	<input type="radio"/>

## NEW QUESTION 139

- (Topic 1)

You need to create a stored procedure that passes in a person's name and age. Which statement should you use to create the stored procedure?

- A. `CREATE PROCEDURE StoreData (@UserName, @Age)`
- B. `CREATE PROCEDURE StoreData  
@UserName nvarchar(255),  
@Age int`
- C. `CREATE PROCEDURE StoreData  
@UserName char,  
@Age double`
- D. `UPDATE PROCEDURE StoreData  
@UserName nvarchar(255),  
@Age int`

- A. Option A  
B. Option B  
C. Option C  
D. Option D

Answer: B

Explanation:

Example (nvarchar and int are best here):

The following example creates a stored procedure that returns information for a specific employee by passing values for the employee's first name and last name.

This procedure accepts only exact matches for the parameters passed.

```
CREATE PROCEDURE HumanResources.uspGetEmployees
```

```
@LastName nvarchar(50),
@FirstName nvarchar(50) AS
SET NOCOUNT ON;
SELECT FirstName, LastName, JobTitle, Department FROM HumanResources.vEmployeeDepartment
WHERE FirstName = @FirstName AND LastName = @LastName; GO
```

**NEW QUESTION 141**

- (Topic 1)

Which language was designed for the primary purpose of querying data, modifying data, and managing databases in a Relational Database Management System?

- A. Java
- B. SQL
- C. C++
- D. Visual Basic

**Answer:** B

**Explanation:**

SQL is a special-purpose programming language designed for managing data held in a relational database management system (RDBMS).

**NEW QUESTION 142**

- (Topic 1)

Which three are valid SQL keywords? (Choose three.)

- A. GET
- B. WHAT
- C. FROM
- D. SELECT
- E. WHERE

**Answer:** CDE

**Explanation:**

Example: SELECT \* FROM Customers WHERE Country='Mexico';

**NEW QUESTION 147**

DRAG DROP - (Topic 1)

You are developing an application that displays a list of race results. The race results are stored in the following class:

```
public class RaceSpeedRecord
{
    public RaceSpeedRecord Faster;
    public RaceSpeedRecord Slower;

    public string Race;
    public double Time;
}
```

The code that manages the list is as follows:

```
public class Results
{
    public Results()
    {
        CurrentOlympicRecord = new RaceSpeedRecord();
    }

    public RaceSpeedRecord CurrentOlympicRecord;

    public void AddRace(string raceName, double time)
    {
    }
}
```

You need to implement the Add Race method.

Match the code segment to its location. (To answer, drag the appropriate code segment from the column on the left to its location on the right, Each code segment may be used once, more than once, or not at all. Each correct match is worth one point.)

Code Segments

current.Faster

current.Slower

current.Time

current.Race

Answer Area

```
public void AddRace(string raceName, double time)
{
    var current = CurrentOlympicRecord;

    while (  > time)
        current =  ;

    var race = new RaceSpeedRecord
    {
        Race = raceName,
        Time = time,

        Faster = 
        Slower = 
    }

    current.Faster.Slower = race;
    current.Slower.Faster = race;
}
```

- A. Mastered
- B. Not Mastered

Answer: A

Explanation:

Code Segments

current.Faster

current.Slower

current.Time

current.Race

Answer Area

```
public void AddRace(string raceName, double time)
{
    var current = CurrentOlympicRecord;

    while (  > time)
        current =  ;

    var race = new RaceSpeedRecord
    {
        Race = raceName,
        Time = time,

        Faster = 
        Slower = 
    }

    current.Faster.Slower = race;
    current.Slower.Faster = race;
}
```

NEW QUESTION 151

- (Topic 1)

Where must Internet Information Services (IIS) be installed in order to run a deployed ASP. NET application?

- A. on the computer that you plan to deploy from
- B. on the computer that hosts the application
- C. on the Application Layer Gateway Service
- D. on the client computers

Answer: B

Explanation:

IIS is run on the web server. The web server is hosting the application.

NEW QUESTION 153

- (Topic 1)

You run the following code:

```
int a = 10;
int b = 20;
int c = 30;
int result = 0;

if (a <= b || c > a)
    result = 10;
else if (a <= b || c <= a)
    result = 20;
else
    result = 30;
```

What is the value of result when the code has completed?

- A. 10
- B. 20
- C. 30

**Answer: B**

**Explanation:**

The conditional-OR operator (||) performs a logical-OR of its bool operands. If the first operand evaluates to true, the second operand isn't evaluated. If the first operand evaluates to false, the second operator determines whether the OR expression as a whole evaluates to true or false.

**NEW QUESTION 157**

- (Topic 1)

You need to allow a consumer of a class to modify a private data member. What should you do?

- A. Assign a value directly to the data member.
- B. Provide a private function that assigns a value to the data member.
- C. Provide a public function that assigns a value to the data member.
- D. Create global variables in the class.

**Answer: C**

**Explanation:**

In this example (see below), the Employee class contains two private data members, name and salary. As private members, they cannot be accessed except by member methods. Public methods named GetName and Salary are added to allow controlled access to the private members. The name member is accessed by way of a public method, and the salary member is accessed by way of a public read-only property.

Note: The private keyword is a member access modifier. Private access is the least permissive access level. Private members are accessible only within the body of the class or the struct in which they are declared

Example:

```
class Employee2
{
    private string name = "FirstName, LastName"; private double salary = 100.0;
    public string GetName()
    {
        return name;
    }
    public double Salary
    {
        get { return salary; }
    }
}
```

**NEW QUESTION 158**

- (Topic 1)

You have a Microsoft ASP.NET web application.

You need to store a value that can be shared across users on the server. Which type of state management should you use?

- A. Session
- B. ViewState
- C. Application
- D. Cookies

**Answer: C**

**Explanation:**

Application state is a data repository available to all classes in an ASP.NET application. Application state is stored in memory on the server and is faster than storing and retrieving information in a database. Unlike session state, which is specific to a single user session, application state applies to all users and sessions. Therefore, application state is a useful place to store small amounts of often-used data that does not change from one user to another.

Incorrect:

not A: Session State contains information that is pertaining to a specific session (by a particular client/browser/machine) with the server. It's a way to track what the user is doing on the site.. across multiple pages...amid the statelessness of the Web. e.g. the contents of a particular user's shopping cart is session data. Cookies can be used for session state. Not B: Viewstate is a state management technique in asp.net. ASP.NET Viewstate is preserving the data between the requests or postbacks and stored in hidden fields on the page.

**NEW QUESTION 159**

HOTSPOT - (Topic 1)

For each of the following statements, select Yes if the statement is true. Otherwise, select No. Each correct selection is worth one point.

**Answer Area**

Description of Behavior	Yes	No
The "is a" relationship between classes refers to composition.	<input type="radio"/>	<input type="radio"/>
The "has a" relationship between classes refers to inheritance.	<input type="radio"/>	<input type="radio"/>
Both composition and inheritance allow you to create sub-objects.	<input type="radio"/>	<input type="radio"/>

- A. Mastered
- B. Not Mastered

**Answer:** A

**Explanation:**

**Answer Area**

Description of Behavior	Yes	No
The "is a" relationship between classes refers to composition.	<input type="radio"/>	<input checked="" type="radio"/>
The "has a" relationship between classes refers to inheritance.	<input type="radio"/>	<input checked="" type="radio"/>
Both composition and inheritance allow you to create sub-objects.	<input checked="" type="radio"/>	<input type="radio"/>

**NEW QUESTION 161**

- (Topic 1)

What are two possible options for representing a Web application within Internet Information Services (IIS)? (Each correct answer presents a complete solution. Choose two. )

- A. Web site
- B. Web directory
- C. Virtual directory
- D. Application server
- E. Application directory

**Answer:** AC

**Explanation:**

\* Create a Web Application

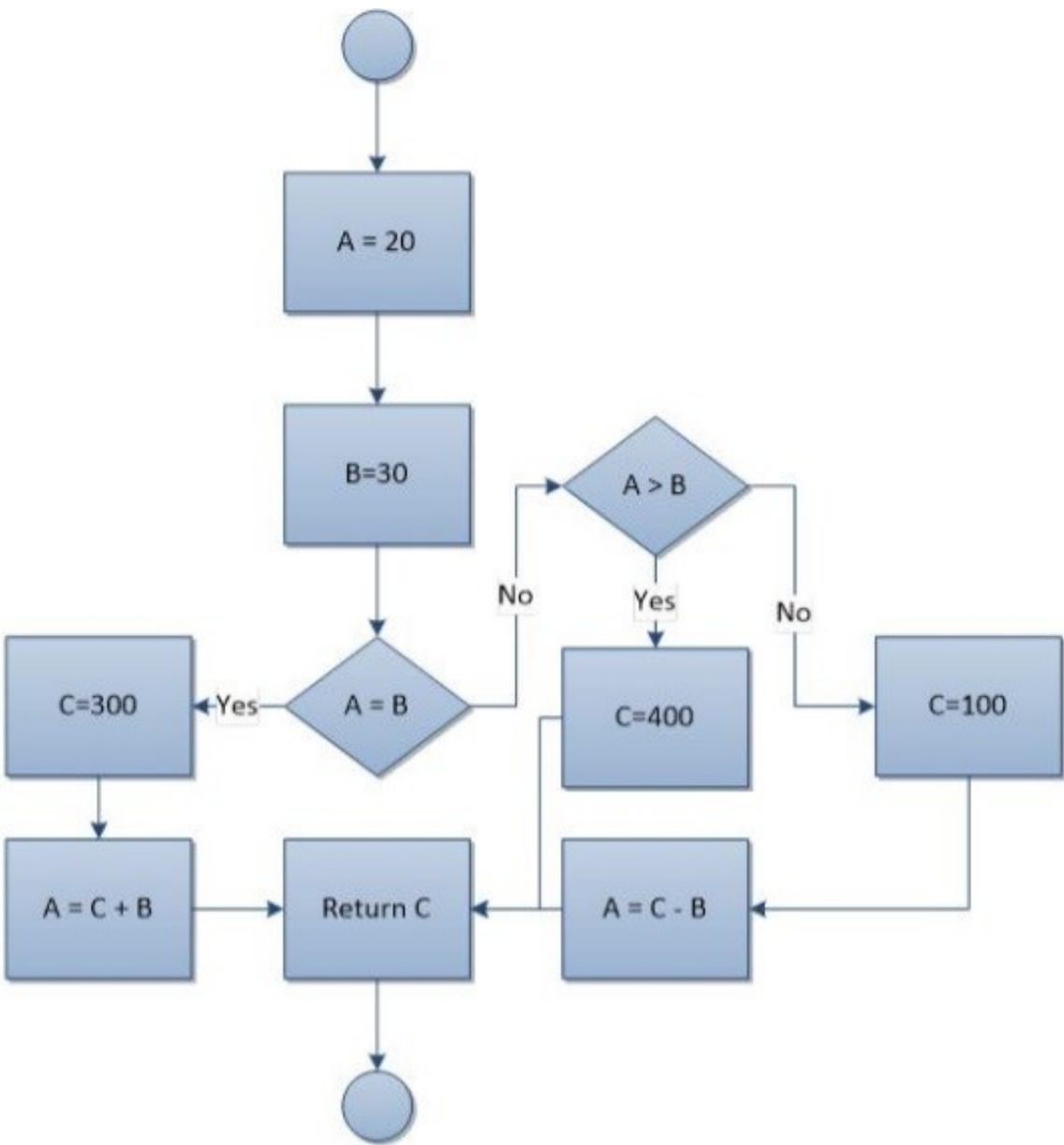
An application is a grouping of content at the root level of a Web site or a grouping of content in a separate folder under the Web site's root directory. When you add an application in IIS 7, you designate a directory as the application root, or starting point, for the application and then specify properties specific to that particular application, such as the application pool that the application will run in.

\* You can make an Existing Virtual Directory a Web Application.

**NEW QUESTION 166**

HOTSPOT - (Topic 2)

You have the following flowchart:



Use the drop-down menus to select the answer choice that completes each statement Each correct selection is worth one point.

**Answer Area**

The value that is returned is [answer choice].

The value of A is [answer choice].

**Answer Area**

The value that is returned is [answer choice].

20

100

300

400

The value of A is [answer choice].

20

30

70

330

- A. Mastered
- B. Not Mastered

**Answer:** A

**Explanation:**

**Answer Area**

The value that is returned is [answer choice].

20

100

300

400

The value of A is [answer choice].

20

30

70

330

NEW QUESTION 168

HOTSPOT - (Topic 2)

You are reviewing the following class that is used to manage the results of a 5K race:

```
Public Class Player
    Private _name As String
    Public Const Key As String = "player"

    Private _ranking As Integer
    Public Property Ranking() As Integer
        Get
            Return _ranking
        End Get
        Private Set(value As Integer)
            _ranking = value
        End Set
    End Property

    Public Function MatchName(searchTerm As String) As Boolean
        Return _name.ToLower() = searchTerm
    End Function

    Public Sub SetResult(rank As Integer, name As String)
        If (Not IsNothing(_name)) Then
            Return
        End If

        Ranking = rank
        _name = name
    End Sub
End Class
```

For each of the following statements, select Yes if the statement is true. Otherwise, select No. Each correct selection is worth one point.

Answer Area

Description of Behavior	Yes	No
You can only set the player’s ranking once.	<input type="radio"/>	<input type="radio"/>
If you call the MatchName method, the code will throw an exception.	<input type="radio"/>	<input type="radio"/>
You can change Key from “player” to “racer”.	<input type="radio"/>	<input type="radio"/>

- A. Mastered
- B. Not Mastered

Answer: A

Explanation:

Answer Area

Description of Behavior	Yes	No
You can only set the player’s ranking once.	<input checked="" type="radio"/>	<input type="radio"/>
If you call the MatchName method, the code will throw an exception.	<input checked="" type="radio"/>	<input type="radio"/>
You can change Key from “player” to “racer”.	<input type="radio"/>	<input checked="" type="radio"/>

NEW QUESTION 172

HOTSPOT - (Topic 2)

For each of the following statements, select Yes if the statement is true. Otherwise, select No. Each correct selection is worth one point.

Answer Area

Statement	Yes	No
XHTML attribute names must be in uppercase.	<input type="radio"/>	<input type="radio"/>
XHTML attribute values must be in quotation marks.	<input type="radio"/>	<input type="radio"/>
XHTML attribute minimization is forbidden.	<input type="radio"/>	<input type="radio"/>

- A. Mastered
- B. Not Mastered

Answer: A

Explanation:

Answer Area

Statement	Yes	No
XHTML attribute names must be in uppercase.	<input type="radio"/>	<input checked="" type="radio"/>
XHTML attribute values must be in quotation marks.	<input checked="" type="radio"/>	<input type="radio"/>
XHTML attribute minimization is forbidden.	<input checked="" type="radio"/>	<input type="radio"/>

NEW QUESTION 174

- (Topic 2)

This question requires that you evaluate the underlined text to determine if it is correct.

When creating a site to utilize message queuing, the "IP address" must be configured to MSMQ.

Select the correct answer if the underlined text does not make the statement correct. Select "No change is needed" if the underlined text makes the statement correct.

- A. No change is needed

- B. protocol
- C. host header
- D. port

**Answer:** B

**Explanation:**

MSMQ is a messaging protocol that allows applications running on separate servers/processes to communicate in a failsafe manner.

**NEW QUESTION 175**

- (Topic 2)

You execute the following code.

```
For i = 0 to 10 Step 2
    Console.WriteLine("Hello")
Next
```

How many times will the word Hello be printed?

- A. 5
- B. 6
- C. 10
- D. 12

**Answer:** B

**NEW QUESTION 179**

- (Topic 2)

What are the three basic states that a Windows service can be in? (Choose three.)

- A. running
- B. starting
- C. halted
- D. stopped
- E. paused

**Answer:** BDE

**Explanation:**

A service can exist in one of three basic states: Running, Paused, or Stopped.

**NEW QUESTION 181**

- (Topic 2)

This question requires that you evaluate the underlined text to determine if it is correct.

The benefit of using a transaction when updating multiple tables is that the update cannot fail.

Select the correct answer if the underlined text does not make the statement correct. Select "No change is needed" if the underlined text makes the statement correct.

- A. No change is needed
- B. succeeds or fails as a unit
- C. finishes as quickly as possible
- D. can be completed concurrently with other transactions

**Answer:** B

**Explanation:**

The benefit of using a transaction when updating multiple tables is that the update succeeds or fails as a unit.

**NEW QUESTION 186**

- (Topic 2)

In the application life cycle, the revision of an application after it has been deployed is referred to as:

- A. Monitoring
- B. Maintenance
- C. Unit testing
- D. Integration

**Answer:** B

**NEW QUESTION 191**

- (Topic 2)

All objects in .NET inherit from which item?

- A. a reference type
- B. the System.Type class
- C. a value type
- D. the System.Object class

**Answer:** D

**Explanation:**

The System.Object class supports all classes in the .NET Framework class hierarchy and provides low-level services to derived classes. This is the ultimate base class of all classes in the .NET Framework; it is the root of the type hierarchy.

**NEW QUESTION 194**

- (Topic 2)

You are creating an application that presents the user with a Windows Form. Which event is triggered each time the Windows Form receives focus?

- A. Load
- B. Enter
- C. Activated
- D. paint

**Answer:** B

**Explanation:**

When you change the focus by using the mouse or by calling the Focus method, focus events of the Control class occur in the following order:  
Enter GotFocus LostFocus Leave Validating Validated

**NEW QUESTION 196**

- (Topic 2)

Two classes named Circle and Square inherit from the Shape class. Circle and Square both inherit Area from the Shape class, but each computes Area differently. Which term is used to describe this object-oriented concept?

- A. encapsulation
- B. superclassing
- C. polymorphism
- D. overloading

**Answer:** C

**Explanation:**

You can use polymorphism to in two basic steps:  
Create a class hierarchy in which each specific shape class derives from a common base class.  
Use a virtual method to invoke the appropriate method on any derived class through a single call to the base class method.

**NEW QUESTION 199**

- (Topic 2)

The Dog class and the Cat class inherit from the Animal class. The Animal class includes a breathe() method and a speak() method. If the speak() method is called from an object of type Dog, the result is a bark. If the speak() method is called from an object of type Cat, the result is a meow. Which term is used to describe this object-oriented concept?

- A. multiple inheritance
- B. encapsulation
- C. polymorphism
- D. data hiding

**Answer:** C

**Explanation:**

Polymorphism is often referred to as the third pillar of object-oriented programming, after encapsulation and inheritance. Polymorphism is a Greek word that means "many-shaped" and it has two distinct aspects:  
\* At run time, objects of a derived class may be treated as objects of a base class in places such as method parameters and collections or arrays. When this occurs, the object's declared type is no longer identical to its run-time type.  
\* Base classes may define and implement virtual methods, and derived classes can override them, which means they provide their own definition and implementation. At run- time, when client code calls the method, the CLR looks up the run-time type of the object, and invokes that override of the virtual method. Thus in your source code you can call a method on a base class, and cause a derived class's version of the method to be executed.

**NEW QUESTION 201**

DRAG DROP - (Topic 2)

You are extending an application that stores and displays the results of various types of foot races. The application contains the following definitions:

```
Public Interface IDisplayResult
    Sub Display()
End Interface

Public Class Race
    Public Seconds As Integer

    Public Overridable Sub Display()
        Console.WriteLine(Seconds)
    End Sub
End Class
```

The following code is used to display the result for a race:

```
Dim r1 = New FootRace()  
Dim r2 = TryCast(r1, IDisplayResult)  
r1.Seconds = 99  
  
r1.Display()  
r2.Display()  
r1.DisplayRaw()
```

The contents of the console must be as follows:

? 99 seconds  
? 1.65 minutes  
? 99

You need to implement the FootRace class.

Match the method declaration to the method body. (To answer, drag the appropriate declaration from the column on the left to its body on the right. Each declaration may be used once, more than once, or not at all. Each correct match is worth one point.)

\*\*\*\*\*

**Code Segments**

Public Overrides Sub Display()

Public Sub DisplayRaw()

Public Sub Display() Implements IDisplayResult.Display

Private Sub Display()

\*\*\*\*\*

**Answer Area**

Public Class FootRace  
Inherits Race  
Implements IDisplayResult

Code Segment

Console.WriteLine(Seconds & "seconds")  
End Sub

Code Segment

MyBase.Display()  
End Sub

Code Segment

Console.WriteLine(Seconds / 60 & " minutes")  
End Sub  
End Class

- A. Mastered
- B. Not Mastered

Answer: A

Explanation:

Passing Certification Exams Made Easy

visit - <https://www.surepassexam.com>

## Code Segments

```
Public Overrides Sub Display()
```

```
Public Sub DisplayRaw()
```

```
Public Sub Display() Implements IDisplayResult.Display
```

```
Private Sub Display()
```

## Answer Area

```
Public Class FootRace
    Inherits Race
    Implements IDisplayResult
```

```
Public Overrides Sub Display()
```

```
    Console.WriteLine(Seconds & "seconds")
End Sub
```

```
Public Sub DisplayRaw()
```

```
    MyBase.Display()
End Sub
```

```
Public Sub Display() Implements IDisplayResult.Display
```

```
    Console.WriteLine(Seconds / 60 & " minutes")
End Sub
End Class
```

## NEW QUESTION 205

- (Topic 2)

You are creating a Web application. The application will be consumed by client computers that run a variety of Web browsers. Which term is used to describe the process of making the application available for client computers to access?

- A. Deploying
- B. Hosting
- C. Virtualization
- D. Casting

**Answer: B**

### Explanation:

You host web applications.

## NEW QUESTION 210

- (Topic 2)

You are creating an application for computers that run Windows XP or later. This application must run after the computer starts. The user must not be aware that the application is running.

The application performs tasks that require permissions that the logged-in user does not have.

Which type of application allows this behavior?

- A. Windows Forms application
- B. DOS batch file
- C. Terminate-and-stay-resident (TSR) program
- D. Windows Service application

**Answer: D**

## NEW QUESTION 214

- (Topic 2)

This question requires that you evaluate the underlined text to determine if it is correct. Converting an object to a more general type is called upcasting.

Select the correct answer if the underlined text does not make the statement correct. Select "No change is needed" if the underlined text makes the statement correct.

- A. No change is needed
- B. downcasting
- C. interfacing
- D. flexing

**Answer: A**

### Explanation:

Casting up a hierarchy means casting from a derived object reference to a base object reference.

**NEW QUESTION 217**

- (Topic 2)  
You need to create a property in a class. Consumers of the class must be able to read the values of the property. Consumers of the class must be prevented from writing values to the property.  
Which property procedure should you include?

- A. Set
- B. Get
- C. Let
- D. Return

**Answer:** B

**NEW QUESTION 219**

- (Topic 2)  
You have a class with a property.  
You need to ensure that consumers of the class can write to the value of the property.  
Which keyword should you use?

- A. Add
- B. value
- C. Set
- D. Get

**Answer:** C

**Explanation:**

Set:  
The set { } implementation receives the implicit argument "value." This is the value to which the property is assigned.  
\* Property. On a class, a property gets and sets values. A simplified syntax form, properties are implemented in the IL as methods (get, set).

**NEW QUESTION 220**

- (Topic 2)  
This question requires that you evaluate the underlined text to determine if it is correct.  
The bubble sort algorithm steps through the list to be sorted, comparing adjacent items and swapping them if they are in the wrong order.  
Select the correct answer if the underlined text does not make the statement correct. Select "No change is needed" if the underlined text makes the statement correct.

- A. No change is needed
- B. merge
- C. library
- D. insertion

**Answer:** A

**NEW QUESTION 225**

HOTSPOT - (Topic 2)  
For each of the following statements, select Yes if the statement is true. Otherwise, select No. Each correct selection is worth one point.

**Answer Area**

Description of Behavior	Yes	No
The "is a" relationship between classes refers to composition.	<input type="radio"/>	<input type="radio"/>
The "has a" relationship between classes refers to inheritance.	<input type="radio"/>	<input type="radio"/>
Both composition and inheritance allow you to create sub-objects.	<input type="radio"/>	<input type="radio"/>

- A. Mastered
- B. Not Mastered

**Answer:** A

**Explanation:**

Answer Area

Description of Behavior	Yes	No
The "is a" relationship between classes refers to composition.	<input type="radio"/>	<input checked="" type="radio"/>
The "has a" relationship between classes refers to inheritance.	<input type="radio"/>	<input checked="" type="radio"/>
Both composition and inheritance allow you to create sub-objects.	<input checked="" type="radio"/>	<input type="radio"/>

NEW QUESTION 229

- (Topic 2)  
Which function does Simple Object Access Protocol (SOAP) provide when using Web services?

- A. communications protocol
- B. model for describing Web services
- C. directory of registered Web services
- D. security model

Answer: :A

Explanation:

SOAP, originally defined as Simple Object Access Protocol, is a protocol specification for exchanging structured information in the implementation of web services in computer networks. It relies on XML Information Set for its message format, and usually relies on other application layer protocols, most notably Hypertext Transfer Protocol (HTTP) or Simple Mail Transfer Protocol (SMTP), for message negotiation and transmission.

NEW QUESTION 231

- (Topic 2)  
You are creating a database for a student directory. The Students table contains the following fields:

```
firstName
lastName
emailAddress
telephoneNumber
```

Which statement will retrieve only the first name, last name, and telephone number for every student listed in the directory?

- A. `SELECT firstName, lastName, telephoneNumber FROM Students`
- B. `WHERE Students SELECT firstName, lastName, telephoneNumber`
- C. `WHERE Students SELECT *`
- D. `SELECT firstName, lastName, telephoneNumber IN Students`
- E. `SELECT * FROM Students`

- A. Option A
- B. Option B
- C. Option C
- D. Option D

Answer: A

Explanation:

Use SELECT??FROM and list the fields you want to retrieve.

NEW QUESTION 235

- (Topic 2)  
You execute the following code.

```
For i = 0 to 100
    If I Mod 2 <> 0 Then
        Console.WriteLine("Hello")
    End If
Next
```

How many times will the word Hello be printed?

- A. 49
- B. 50
- C. 51
- D. 100

**Answer: B**

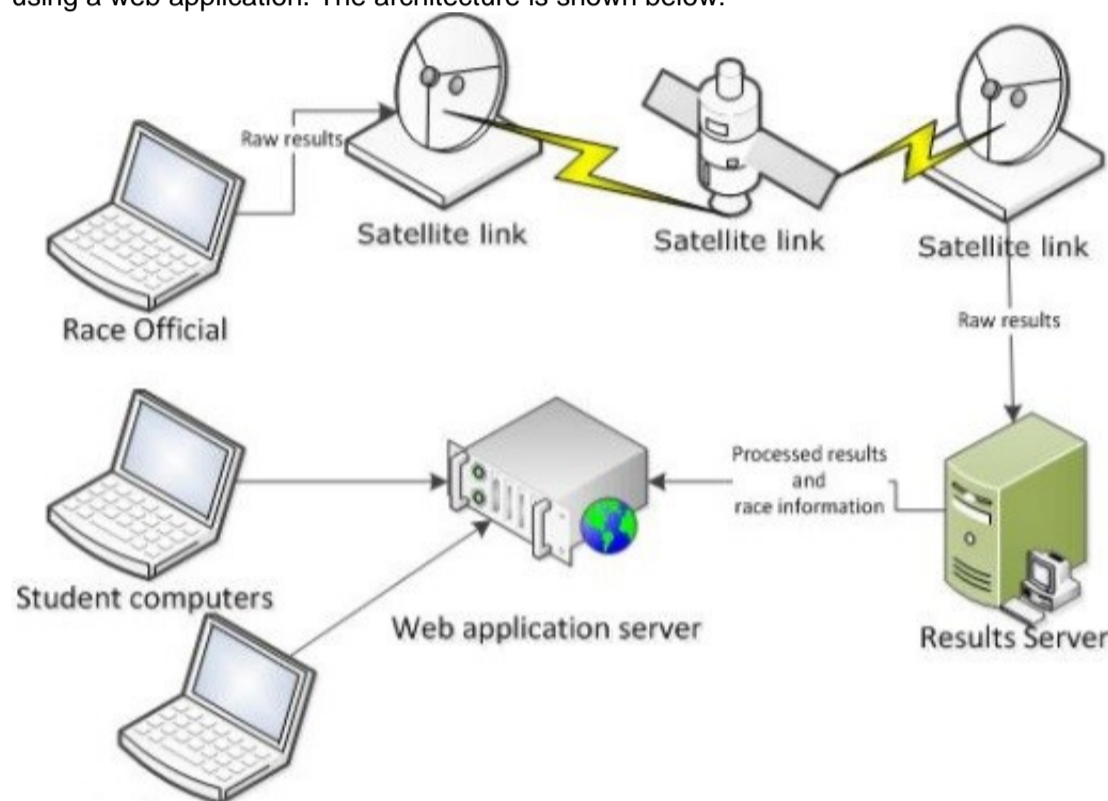
**Explanation:**

The mod operator computes the remainder after dividing its first operand by its second. All numeric types have predefined remainder operators. In this case the reminder will be nonzero 50 times (for i with values 1, 3, 5,...,99).

**NEW QUESTION 239**

HOTSPOT - (Topic 2)

You are reviewing the architecture for a system that allows race officials to enter the results of 5K race results. The results are then made available to students using a web application. The architecture is shown below:



Use the drop-down menus to select the answer choice that answers each question. Each correct selection is worth one point.

**Answer Area**

To minimize the time between when a race official records the results and when the results are available on the web, which part of the system is critical?

To increase the number of students that can access race results, what element should be added to the system?

**Answer Area**

To minimize the time between when a race official records the results and when the results are available on the web, which part of the system is critical?

satellite link  
 student computer  
 race official computer  
 web application server

To increase the number of students that can access race results, what element should be added to the system?

satellite link  
 race officials  
 results servers  
 web application servers

- A. Mastered
- B. Not Mastered

**Answer: A**

**Explanation:**

### Answer Area

To minimize the time between when a race official records the results and when the results are available on the web, which part of the system is critical?

To increase the number of students that can access race results, what element should be added to the system?

▼

satellite link

student computer

race official computer

web application server

▼

satellite link

race officials

results servers

web application servers

### NEW QUESTION 242

- (Topic 2)

How many parameters can a default constructor have?

- A. 1
- B. 2
- C. 3 or more

**Answer:** :A

#### Explanation:

If a class contains no instance constructor declarations, a default instance constructor is automatically provided. That default constructor simply invokes the parameterless constructor of the direct base class.

### NEW QUESTION 243

- (Topic 2)

You are building a web application that enables international exchange students to schedule phone calls with their prospective schools.

The application allows students to indicate a preferred date and time for phone calls. Students may indicate no preferred time by leaving the date and time field empty. The application must support multiple time zones.

Which data type should you use to record the student's preferred date and time?

- A. uLong?
- B. DateTimeOffset?
- C. SByte
- D. Date

**Answer:** B

#### Explanation:

datetimeoffset: Defines a date that is combined with a time of a day that has time zone awareness and is based on a 24-hour clock.

Incorrect:

Date: Defines a date.

sByte: The sbyte keyword indicates an integral type that stores values in the range of -128 to 127.

### NEW QUESTION 246

- (Topic 2)

You execute the following code.

```
Dim beakerFull As Boolean = True
Dim flameOn As Boolean = False
Dim iResult As Integer

Select Case beakerFull
    Case True
        Select Case flameOn
            Case True
                iResult = 1
            Case False
                iResult = 2
        End Select
    Case False
        Select Case flameOn
            Case False
                iResult = 3
            Case True
                iResult = 4
        End Select
End Select
```

What will the variable result be?

- A. 1
- B. 2
- C. 3
- D. 4

**Answer:** :B

#### NEW QUESTION 247

- (Topic 2)

You need to evaluate the following expression:

(A>B) AND (C<D)

What is the value of this expression if A=3, B=4, C=4, and D=5?

- A. 4
- B. 5
- C. False
- D. Null
- E. True

**Answer:** D

#### Explanation:

A>B is false.

#### NEW QUESTION 248

- (Topic 2)

This question requires that you evaluate the underlined text to determine if it is correct.

A table whose attributes depend only on the primary key must be at least second normal form.

Select the correct answer if the underlined text does not make the statement correct. Select "No change is needed" if the underlined text makes the statement correct.

- A. No change is needed
- B. first
- C. third
- D. fourth

**Answer:** A

#### Explanation:

2nd Normal Form Definition

A database is in second normal form if it satisfies the following conditions: It is in first normal form

All non-key attributes are fully functional dependent on the primary key

#### NEW QUESTION 250

- (Topic 2)

You are reviewing a design for a database. A portion of this design is shown in the exhibits. Note that you may choose either the Crow's Foot Notation or Chen

Notation version of the design. (To view the Crow's Foot Notation, click the Exhibit A button. To view the Chen Notation, click the Exhibit B button. )

Exhibit A



Exhibit B



Which term is used to describe the Customer component?

- A. Field
- B. Entity
- C. Property
- D. Attribute

Answer: B

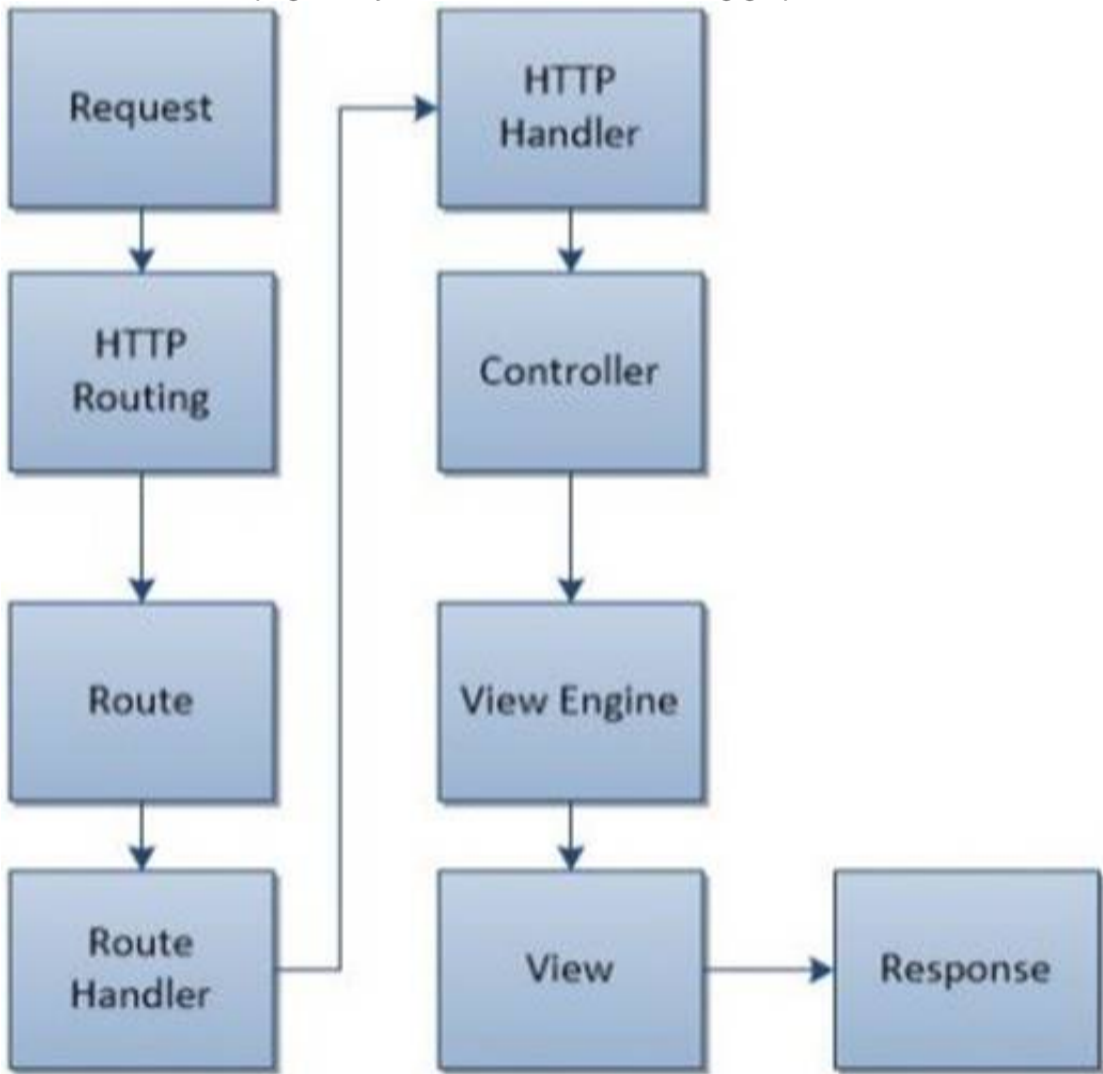
Explanation:

Customer is a table (entity).

NEW QUESTION 255

HOTSPOT - (Topic 2)

The ASP.NET MVC page lifecycle is shown in the following graphic:



Use the drop-down menus to select the answer choice that completes each statement Each correct selection is worth one point.

Answer Area

The [answer choice] event determines which action method is needed and then calls that method.

The URL pattern is matched during the [answer choice] event.

## Answer Area

The **[answer choice]** event determines which action method is needed and then calls that method.

View  
Route  
Controller  
HTTP Handler

The URL pattern is matched during the **[answer choice]** event.

View  
Route  
Controller  
HTTP Handler

- A. Mastered  
B. Not Mastered

**Answer:** A

**Explanation:**

## Answer Area

The **[answer choice]** event determines which action method is needed and then calls that method.

View  
Route  
**Controller**  
HTTP Handler

The URL pattern is matched during the **[answer choice]** event.

View  
**Route**  
Controller  
HTTP Handler

## NEW QUESTION 258

- (Topic 2)

You have a Microsoft ASP.NET web application.

You need to store a value that can be shared across users on the server.

Which type of state management should you use?

- A. session  
B. application  
C. cookies  
D. ViewState

**Answer:** B

**Explanation:**

Application state is a data repository available to all classes in an ASP.NET application. Application state is stored in memory on the server and is faster than storing and retrieving information in a database. Unlike session state, which is specific to a single user session, application state applies to all users and sessions. Therefore, application state is a useful place to store small amounts of often-used data that does not change from one user to another.

Incorrect:

not A: Session State contains information that is pertaining to a specific session (by a particular client/browser/machine) with the server. It's a way to track what the user is doing on the site.. across multiple pages...amid the statelessness of the Web. e.g. the contents of a particular user's shopping cart is session data. Cookies can be used for session state. Not D: Viewstate is a state management technique in asp.net. ASP.NET Viewstate is preserving the data between the requests or postbacks and stored in hidden fields on the page.

## NEW QUESTION 261

- (Topic 2)

Which language was designed for the primary purpose of querying data, modifying data, and managing databases in a Relational Database Management System?

- A. C ++  
B. Java  
C. SQL  
D. Visual Basic

**Answer:** C

**Explanation:**

SQL is a special-purpose programming language designed for managing data held in a relational database management system (RDBMS).

## NEW QUESTION 265

- (Topic 2)

You are creating an application that presents users with a graphical interface in which they computers that do not have network connectivity.

Which type of application should you choose?

- A. ClickOnce
- B. Windows Service
- C. Windows Forms
- D. Console-based

**Answer:** C

**Explanation:**

Use Windows Forms when a GUI is needed.

**NEW QUESTION 266**

- (Topic 2)

You are creating an ASP. NET Web application.

Which line of code should you use to require a control to process on the computer that hosts the application?

- A. runat= "server"
- B. redirect\*="HostPag
- C. htm"
- D. AutoEventWireup="true"
- E. defaultRedirect="ServerPag
- F. htm"

**Answer:** A

**NEW QUESTION 267**

- (Topic 2)

You run the following code.

```
Dim beakerFull As Boolean = True
Dim flameOn As Boolean = False
Dim iResult As Integer

Select Case beakerFull
    Case True
        Select Case flameOn
            Case True
                iResult = 4
            Case False
                iResult = 3
        End Select
    Case False
        Case flameOn
            Case False
                iResult = 2
            Case True
                iResult = 1
        End Select
End Select
```

What will the value of the variable iResult be?

- A. 1
- B. 2
- C. 3
- D. 4

**Answer:** C

**NEW QUESTION 268**

- (Topic 2)

Where must Internet Information Services (IIS) be installed in order to run a deployed ASP. NET application?

- A. on the computer that you plan to deploy from
- B. on the client computers
- C. on the computer that hosts the application
- D. on the Application Layer Gateway Service

**Answer:** C

**Explanation:**

IIS is run on the web server. The web server is hosting the application.

**NEW QUESTION 270**

- (Topic 2)

You run the following code:

```
Dim a As Integer = 10
Dim b As Integer = 20
Dim c As Integer = 30
Dim result As Integer = 0

If a <= b Or c > a Then
    result = 10
ElseIf a <= b Or c <= a Then
    result = 20
Else
    result = 30
End If
```

What is the value of result when the code has completed?

- A. 10
- B. 20
- C. 30

**Answer:** B

**Explanation:**

The conditional-OR operator (||) performs a logical-OR of its bool operands. If the first operand evaluates to true, the second operand isn't evaluated. If the first operand evaluates to false, the second operator determines whether the OR expression as a whole evaluates to true or false.

**NEW QUESTION 271**

- (Topic 2)

You create an application that uses Simple Object Access Protocol (SOAP).

Which technology provides information about the application's functionality to other applications?

- A. Web Service Description Language (WSDL)
- B. Common Intermediate Language (CIL)
- C. Extensible Application Markup Language (XAML)
- D. Universal Description, Discovery, and Integration (UDDI)

**Answer:** A

**Explanation:**

WSDL is often used in combination with SOAP and an XML Schema to provide Web services over the Internet. A client program connecting to a Web service can read the WSDL file to determine what operations are available on the server. Any special datatypes used are embedded in the WSDL file in the form of XML Schema. The client can then use SOAP to actually call one of the operations listed in the WSDL file using for example XML over HTTP.

**NEW QUESTION 274**

- (Topic 2)

Which type of application has the following characteristics when it is installed?

- ? Runs continuously in the background by default when the startup type is set to automatic
- ? Presents no user interface

- A. Console-based
- B. Windows Forms
- C. Windows Service
- D. Batch file

**Answer:** C

**Explanation:**

A Windows service runs in the background and has no interface.

**NEW QUESTION 279**

- (Topic 2)

What is displayed when you attempt to access a Web service by using a Web browser?

- A. a visual depiction of your preliminary connection to the Web service
- B. a listing of methods that are available in the Web service
- C. an error page explaining that you have accessed the Web service incorrectly
- D. a directory listing of the Web services application structure

**Answer:** B

**Explanation:**

The server, in response to this request, displays the Web service's HTML description page.

The Web service's HTML description page shows you all the Web service methods supported by a particular Web service. Link to the desired Web service method and enter the necessary parameters to test the method and see the XML response.

**NEW QUESTION 283**

- (Topic 2)

You are creating a routine that will perform calculations by using a repetition structure. You need to ensure that the entire loop executes at least once. Which looping structure should you use?

- A. For-Each
- B. For
- C. While
- D. Do-While

**Answer:** D

**Explanation:**

In a Do..While loop the test is at the end of the structure, so it will be executed at least once.

**NEW QUESTION 286**

- (Topic 2)

You are creating an application for a help desk center. Calls must be handled in the same order in which they were received. Which data structure should you use?

- A. Queue
- B. Hashtable
- C. Stack
- D. Binary tree

**Answer:** :A

**NEW QUESTION 289**

- (Topic 2)

The purpose of the Finally section in an exception handler is to:

- A. Execute code only when an exception is thrown.
- B. Break out of the error handler.
- C. Execute code regardless of whether an exception is thrown.
- D. Conclude the execution of the application.

**Answer:** C

**Explanation:**

By using a finally block, you can clean up any resources that are allocated in a try block, and you can run code even if an exception occurs in the try block. Typically, the statements of a finally block run when control leaves a try statement. The transfer of control can occur as a result of normal execution, of execution of a break, continue, goto, or return statement, or of propagation of an exception out of the try statement.

**NEW QUESTION 294**

DRAG DROP - (Topic 2)

You are developing an application to display track and field race results. The application must display the race results twice. The first time it must display only the winner and runner-up. The second time it must display all participants. The code used to display results is shown below.

```
Public Sub Display()  
    For Each ranking In Rankings(True)  
        DisplayName(ranking)  
    Next  
  
    For Each ranking In Rankings(False)  
        Displayname(ranking)  
    Next  
End Sub
```

You need to implement the Rankings() function.

Complete the function to meet the requirements. (To answer, drag the appropriate code segment from the column on the left to its location on the right. Each code segment may be used once, more than once, or not at all. Each correct match is worth one point.)

Code Segments	Answer Area
<div>Exit For</div>	<pre>Private Iterator Function Rankings(top2Only As Boolean) _     As IEnumerable(Of String)</pre>
<div>Exit Function</div>	<div>Code Segment "John"</div>
<div>Return</div>	<div>Code Segment "Nancy"</div>
<div>Yield</div>	<pre>    If (top2Only) Then</pre>
	<div>Code Segment</div>
	<pre>    End If</pre>
	<div>Code Segment "Chris"</div>
	<pre>End Function</pre>

- A. Mastered
- B. Not Mastered

Answer: A

Explanation:

**Code Segments**

Exit For

Exit Function

Return

Yield

**Answer Area**

```
Private Iterator Function Rankings(top2Only As Boolean) _
    As IEnumerable(Of String)

    Yield "John"

    Yield "Nancy"

    If (top2Only) Then
        Exit Function
    End If

    Yield "Chris"

End Function
```

**NEW QUESTION 295**

- (Topic 2)  
Which term is used to describe a class that inherits functionality from an existing class?

- A. Superclass
- B. Base class
- C. Inherited class
- D. Derived class

Answer: D

Explanation:

Classes (but not structs) support the concept of inheritance. A class that derives from another class (the base class) automatically contains all the public, protected, and internal members of the base class except its constructors and destructors.

**NEW QUESTION 297**

- (Topic 2)  
In which order do the typical phases of the Software Development Life Cycle occur?

- A. Requirements gathering, design, development, and testing
- B. Development, design, requirements gathering, and testing
- C. Design, requirements gathering, development, and testing
- D. Design, development, requirements gathering, and testing

Answer: A

**NEW QUESTION 299**

- (Topic 2)  
How does a console-based application differ from a Windows Store app?

- A. Windows Store apps do not provide a method for user input
- B. Console-based applications do not display a graphical interface.
- C. Windows Store apps can access network resources.
- D. Console-based applications require the XNA Framework to run.

Answer: B

**NEW QUESTION 302**

- (Topic 2)  
You are reviewing a design for a database. A portion of this design is shown in the exhibit. Note that you may choose to view either the Crow's Foot Notation or Chen Notation version of the design. (To view the Crow's Foot Notation, click the Exhibit A button. To view the Chen Notation, click the Exhibit B button.)

**Exhibit A**



### Exhibit B



Which term is used to describe the relationship between Customer and Order?

- A. many-to-many
- B. multi-dimensional
- C. one-to-many
- D. one-to-one
- E. one-dimensional

**Answer: C**

#### Explanation:

A customer can have many orders.

### NEW QUESTION 304

- (Topic 2)

You have a SQL Server database named MyDB that uses SQL Server Authentication. Which connection string should you use to connect to MyDB?

- A. Data Source=MyDB; Integrated Security=SSPf; Initial Catalog=Sales
- B. Data Source=MyDB; Trusted\_Connection=True; MultipleActiveResultSets=True; Initial Catalog=Sales
- C. Data Source=MyDB; Integrated Security=True; Initial Catalog=Sales
- D. Data Source=MyDB; UserID=username; Password=P@sswOrd; Initial Catalog=Sales

**Answer: D**

#### Explanation:

Integrated Security Integrated Security is by default set to false.

When false, User ID and Password are specified in the connection.

Incorrect:

not C: Windows Authentication (Integrated Security = true) remains the most secure way to log in to a SQL Server database.

### NEW QUESTION 308

- (Topic 2)

You plan to create an application for your company. The application will run automated routines and write the results to a text-based log file. Little or no user interaction is required.

Security requirements on the host computers prevent you from running applications on startup, and users must be able to see the status easily on the screen. The host computers also have limited memory and monitors that display only two colors. These computers will have no network connectivity.

Which type of application should you use for this environment?

- A. Windows Store app
- B. console-based
- C. DirectX
- D. Windows Service

**Answer: B**

#### Explanation:

Building Console Applications

Applications in the .NET Framework can use the System.Console class to read characters from and write characters to the console. Data from the console is read from the standard input stream, data to the console is written to the standard output stream, and error data to the console is written to the standard error output stream.

### NEW QUESTION 312

- (Topic 2)

You need to debug a Windows Service application by using breakpoints. What should you do?

- A. Write all events to an event log.
- B. Set the Windows Service status to Paused.
- C. Implement the Console.WriteLine method throughout the Windows Service.
- D. use the Attach to Process menu in Microsoft Visual Studio.

**Answer: D**

#### Explanation:

\* Because a service must be run from within the context of the Services Control Manager rather than from within Visual Studio, debugging a service is not as straightforward as debugging other Visual Studio application types. To debug a service, you must start the service and then attach a debugger to the process in which it is running.

\* To debug a service Install your service.

Start your service, either from Services Control Manager, Server Explorer, or from code. In Visual Studio, choose Attach to Process from the Debug menu. Etc.

### NEW QUESTION 316

.....

## Thank You for Trying Our Product

### We offer two products:

1st - We have Practice Tests Software with Actual Exam Questions

2nd - Questions and Answers in PDF Format

### 98-361 Practice Exam Features:

- \* 98-361 Questions and Answers Updated Frequently
- \* 98-361 Practice Questions Verified by Expert Senior Certified Staff
- \* 98-361 Most Realistic Questions that Guarantee you a Pass on Your First Try
- \* 98-361 Practice Test Questions in Multiple Choice Formats and Updates for 1 Year

**100% Actual & Verified — Instant Download, Please Click**  
**[Order The 98-361 Practice Test Here](#)**