

## Exam Questions 70-487

Developing Windows Azure and Web Services

<https://www.2passeasy.com/dumps/70-487/>



**NEW QUESTION 1**

**HOTSPOT**

You need to deploy the application to the Windows Azure production environment to meet the business requirements.  
 What should you do? (To answer, select the appropriate button in the answer area.)

The screenshot shows the Windows Azure Management Portal interface. At the top, there are two main sections: 'Deployments' and 'Instances'. The 'Deployments' section contains buttons for 'Upgrade', 'Configure', 'Delete', 'Start', 'Stop', 'Swap VIP', and 'Configure OS'. The 'Instances' section contains buttons for 'Reboot' and 'Reimage'. Below these sections is a 'Choose Columns' dropdown menu. The main table displays a hierarchy of resources:

Name	Type	Environment
Main	Subscription	
Main	Hosted Service	
Certificates		
Windows Azure Tools	Service Certificate	
Main Deployment	Deployment	Production
MvcWebRole1	Role	Production
MvcWebRole1_IN_0	Instance	Production
Main Deployment - staging	Deployment	Staging
MvcWebRole1	Role	Staging
MvcWebRole1_IN_0	Instance	Staging

- A. Mastered
- B. Not Mastered

**Answer: A**

**Explanation:**

Upgrade

Configure

Delete

Start

Stop

Swap VIP

Configure OS

Reboot

Reimage

Deployments

Instances

Choose Columns

Name	Type	Environment
Main	Subscription	
Main	Hosted Service	
Certificates		
Windows Azure Tools	Service Certificate	
Main Deployment	Deployment	Production
MvcWebRole1	Role	Production
MvcWebRole1_IN_0	Instance	Production
Main Deployment - staging	Deployment	Staging
MvcWebRole1	Role	Staging
MvcWebRole1_IN_0	Instance	Staging

**NEW QUESTION 2**  
You need to recommend a data access technology to the contractor to retrieve data from the new data source. Which data access technology should you recommend?

- A. LINQ to XML
- B. ADO.NET Entity Framework
- C. ADO.NET DataSets
- D. WCF Data Services

Answer: D

**NEW QUESTION 3**  
DRAG DROP  
Historical flight information data will be stored in Windows Azure Table Storage using the FlightInfo class as the table entity. There are millions of entries in the table. Queries for historical flight information specify a set of airlines to search and whether the query should return only late flights. Results should be ordered by flight name. You need to specify which properties of the FlightInfo class should be used at the partition and row keys to ensure that query results are returned as quickly as possible. What should you do? (To answer, drag the appropriate properties to the correct location or locations in the answer area. Each property may be used once, more than once, or not at all. You may need to drag the split bar between panes or scroll to view content.)

Answer Area

Airline

WasLate

Flight

Arrival

Use the  property as the partition key.

Use the  property as the row key.

- A. Mastered
- B. Not Mastered

Answer: A

Explanation:

Answer Area	
Airline	Use the <b>Airline</b> property as the partition key.
WasLate	
Flight	Use the <b>Flight</b> property as the row key.
Arrival	

**NEW QUESTION 4**

Errors occasionally occur when saving data using the FlightInfoContext ADO.NET Entity Framework context. Updates to the data are being lost when an error occurs.

You need to ensure that data is still saved when an error occurs by retrying the operation. No more than five retries should be performed.

Which code segment should you use as the body of the SaveChanges() method in the FlightInfoContext.es file?

- ☐ A. 

```
for (var i = 0; i < 5; i++)
{
    try
    {
        return base.SaveChanges();
    }
    catch (SqlException ex)
    {
        if (IsTransient(ex.Number))
        {
            continue;
        }
    }
}
return base.SaveChanges();
```
- ☐ B. 

```
var exception = new EntitySqlException();
while (exception.Data != 0 && exception.Data.Count < 5)
{
    try
    {
        return base.SaveChanges();
    }
    catch (EntitySqlException ex)
    {
        if (IsTransient(ex.HResult))
        {
            exception = ex;
        }
    }
}
return base.SaveChanges();
```



☐ C. 

```
for (var i = 0; i < 5; i++)
{
    try
    {
        return base.SaveChanges();
    }
    catch (SqlException ex)
    {
        if (IsTransient(ex.Number))
        {
            break;
        }
    }
}
return base.SaveChanges();
```

☐ D. 

```
for (var i = 0; i < 5; i++)
{
    try
    {
        return base.SaveChanges();
    }
    catch (SqlException ex)
    {
        if (!IsTransient(ex.Number))
        {
            continue;
        }
    }
}
return base.SaveChanges();
```

- A. Option A
- B. Option B
- C. Option C
- D. Option D

Answer: A

#### NEW QUESTION 5

You are adding a new REST service endpoint to the FlightDataController controller. It returns flights from the consolidated data sources only for flights that are late.

You need to write a LINQ to Entities query to extract the required data.

Which code segment should you use?

☐ A. 

```
var historical = LoadHistorical();
var query = _Context.FlightInfo.AsQueryable()
    .Join(historical, x => x.Flight, y => y.Flight, (x, y) => new { Current = x,
    Historical = y })
    .Where(x => x.Historical.WasLate)
    .Select(x => x.Current);
```

☐ B. 

```
var historical = LoadHistorical();
var query = _Context.FlightInfo.AsEnumerable()
    .Where(x => historical.All(y => y.WasLate && x.Flight == y.Flight))
    .Select(x => x);
```

☐ C. 

```
var historical = LoadHistorical();
var query = _Context.FlightInfo.AsQueryable()
    .Where(x => historical.Select(y => y.Flight).Contains(x.Flight))
    .Where(x => historical.Any(y => y.WasLate))
    .Select(x => x);
```

☐ D. 

```
var historical = LoadHistorical();
var query = _Context.FlightInfo.AsEnumerable()
    .Join(historical, x => x.Flight, y => y.Flight, (x, y) => new { Current = x,
    Historical = y })
    .Where(x => x.Historical.WasLate)
    .Select(x => x.Current);
```

- A. Option A
- B. Option B
- C. Option C
- D. Option D

**Answer:** D

**Explanation:**

Explanation/Reference:

D is right because you send result as REST so if you use "AsQueryable" the result is deferred to the next enumeration of your result.

D is not optimized but will works. A will break at runtime.

Credits to Rem

**NEW QUESTION 6**

Data provided by Consolidated Messenger is cached in the HttpContext.Cache object. You need to ensure that the cache is correctly updated when new data arrives.

What should you do?

- A. Ensure that the EffectivePrivateBytesLimit value is greater than the size of the database file.
- B. Change the sliding expiration of the cache item to 12 hours.
- C. Use the SqlCacheDependency type configured with a connection string to the database file.
- D. Use the CacheDependency type configured to monitor the SFTP target folder.

**Answer:** D

**NEW QUESTION 7**

Historical flight information data will be stored in Windows Azure Table Storage using the FlightInfo class as the table entity.

There are millions of entries in the table. Queries for historical flight information specify a set of airlines to search and whether the query should return only late flights. Results should be ordered by flight name.

You need to specify which properties of the FlightInfo class should be used at the partition and row keys to ensure that query results are returned as quickly as possible.

What should you do? (Each correct answer presents part of the solution. Choose all that apply.)

- A. Use the WasLate property as the row key.
- B. Use the Airline property as the row key.
- C. Use the WasLate property as the partition key
- D. Use the Arrival property as the row key.
- E. Use the Airline property as the partition key.
- F. Use the Flight property as the row key.

**Answer:** BF

**NEW QUESTION 8**

DRAG DROP

The GetVendorPolicy() private method in the ProcessedOrderController controller is returning a

CacheItemPolicy object with default values. The returned policy must expire if the external file located at C:\Triggers\VendorTrigger.txt has been modified or the timeout outlined in the technical requirements is reached.

You need to return the policy.

How should you build the method? (To answer, drag the appropriate code segments to the correct location or locations in the answer area. Each code segment may be used once, more than once, or not at all. You may need to drag the split bar between panes or scroll to view content.)

	Answer Area
Priority	<pre>private CacheItemPolicy GetVendorPolicy() {     CacheItemPolicy vendorPolicy = new CacheItemPolicy();      vendorPolicy.     =     vendorPolicy.      .Add(new HostFileChangeMonitor(GetTriggerPaths()));      return vendorPolicy; }</pre>
ChangeMonitors	
AbsoluteExpiration	
Expiration	
DateTime.AddMinutes	
DateTime.Now.AddMinutes	

- A. Mastered
- B. Not Mastered

Answer: A

Explanation:

<http://msdn.microsoft.com/en-us/library/system.runtime.caching.cacheitempolicy.aspx>

#### NEW QUESTION 9

DRAG DROP

You need to complete the GetProcessedOrders() action in the ProcessedOrderController controller to meet the requirements.

What should you do? (To answer, drag the appropriate code segments to the correct location or locations in the answer area. Each code segment may be used once, more than once, or not at all. You may need to drag the split bar between panes or scroll to view content.)

OrderByDescending

OrderBy

Take

ProcessedOrders

ProcessedDateTime

**Answer Area**

```

public ActionResult GetProcessedOrders()
{
    using (var context = new ProcessedOrders())
    {
        List<Entities.ProcessedOrder> orders =
            context
                .
                .(i => )
                .(10)

        .ToList();
        return View(orders);
    }
}
                    
```

A. Mastered

B. Not Mastered

Answer: A

Explanation:

```

public ActionResult GetProcessedOrders()
{
    using (var context = new ProcessedOrders())
    {
        List<Entities.ProcessedOrder> orders =
            context
                .ProcessedOrders
                .OrderByDescending(i => ProcessedDateTime)
                .Take(10)

        .ToList();
        return View(orders);
    }
}
                    
```

#### NEW QUESTION 10

DRAG DROP

The UploadOrder() method in the UploadCallbackService service is not implementing the callback behavior defined in the IUploadCallBackService interface.

You need to modify the class to implement the required callback behavior.

What should you do? (To answer, drag the appropriate code segments to the correct location or locations in the answer area. Each code segments may be used once, more than once, or not at all. You may need to drag the split bar between panes or scroll to view content.)



Multiple

Single

GetOrderValue

UploadCallbackService

IUploadCallback

**Answer Area**

```
[ServiceBehavior(ConcurrencyMode =
ConcurrencyMode.  )]

public class UploadCallbackService : IUploadCallbackService
{
    public void UploadOrder(int orderNum)
    {
         callback = OperationContext
            .Current.GetCallbackChannel< >();
        decimal value = callback. (orderNum);

        UploadDB.UploadOrder.Upload(orderNum, value);
    }
}
```

- A. Mastered  
 B. Not Mastered

**Answer: A**

**Explanation:**

```
[ServiceBehavior(ConcurrencyMode =
ConcurrencyMode.  )]

public class UploadCallbackService : IUploadCallbackService
{
    public void UploadOrder(int orderNum)
    {
         callback = OperationContext
            .Current.GetCallbackChannel< >();
        decimal value = callback. (orderNum);

        UploadDB.UploadOrder.Upload(orderNum, value);
    }
}
```

Case Study: 3,  
 Online Bookstore  
 Background

You are developing an online bookstore web application that will be used by your company's customers.

Technical Requirements

General requirements:

? The web store application must be an ASP.NET MVC application written in Visual Studio.

? The application must connect to a Microsoft SQL database.

? The GetTop100Books() method is mission critical and must return data as quickly as possible. It should take advantage of fast, forward-only, read-only methods of reading data.

? The ImportBooks() method must keep a copy of the data that can be accessed while new books are being imported without blocking reads.

? The Create MonthlyTotalsReport() method must lock the data and prevent others from updating or inserting new rows until complete.

? The college textbook area of the web application must get data from a daily updated CSV file.

? The children's book area of the web application must get data directly from a local database. It must use a connection string. It must also support access to the stored procedures on the database. Further, it is required to have strongly typed objects. Finally, it will require access to databases from multiple vendors and needs to support more than one-to-one mapping of database tables.

? The cookbook functionality is contained within a client-side application that must connect to the server using HTTP and requires access to the data using JavaScript.

? The BookApiController class must have a method that is able to perform ad-hoc queries using OData.

The RESTful API of the bookstore must expose the following endpoints.



Action: Get a list of all books

HTTP method: GET

Relative URI: /books

Action: Get a book by id

HTTP method: GET

Relative URI: /books/id

Action: Create a new book

HTTP method: POST

Relative URI: /books

Action: Update a book

HTTP method: PUT

Relative URI: /books/id

Action: Delete a book

HTTP method: DELETE

Relative URI: /books/id

Application Structure

```
public class Book
{
    public int Id { get; set; }
    public string Name { get; set; }
    public string Title { get; set; }
    public decimal Price { get; set; }
    public DateTime PublishDate { get; set; }
    public int Sales { get; set; }
    public static void SaveFeaturedBooks(IEnumerable<Book> books, string file)
    {
        ...
    }
}

public class BookApiController : ApiController
{
    private readonly IBookRepository bookRepository;
    public BookApiController(IBookRepository bookRepository)
    {
        this.bookRepository = bookRepository;
    }
    public List<Book> Get(int id)
    {
        var book = bookRepository.Find(id);
        if (book == null)
        {
            throw new HttpResponseException(HttpStatusCode.NotFound);
        }
        return new List<Book> { book };
    }
    public HttpResponseMessage Post(Book value)
    {
        if (ModelState.IsValid)
        {
            bookRepository.InsertOrUpdate(value);
            bookRepository.Save();
            var response = new HttpResponseMessage(HttpStatusCode.Created);
            string uri = Url.Route(null, new { id = value.Id });
            response.Headers.Location = new Uri(Request.RequestUri, uri);
            return response;
        }
        throw new HttpResponseException(HttpStatusCode.BadRequest);
    }
    public HttpResponseMessage Put(int id, Book value)
    {

```

```
{
    if (ModelState.IsValid)
    {
        bookRepository.InsertOrUpdate(value);
        bookRepository.Save();
        return new HttpResponseMessage(HttpStatusCode.NoContent);
    }
    throw new HttpResponseException(HttpStatusCode.BadRequest);
}
public void Delete(int id)
{
    var book = bookRepository.Find(id);
    if (book == null)
    {
        throw new HttpResponseException(HttpStatusCode.NotFound);
    }
    bookRepository.Delete(id);
}
}

...

private static void ImportBooks()
{
    using (SqlConnection connection = new SqlConnection(_connectionString))
    {
        connection.Open();
        SqlCommand command = connection.CreateCommand();
        SqlTransaction transaction = connection.BeginTransaction();
        command.Connection = connection;
        command.Transaction = transaction;
        try
        {
            command.CommandText = _commandText;
            command.ExecuteNonQuery();
            transaction.Commit();
        }
        catch (Exception ex)
        {
            transaction.Rollback();
        }
    }
}
```



```
private static void CreateMonthlyTotalsReports()
{
    using (SqlConnection connection = new SqlConnection(_connectionString))
    {
        connection.Open();
        SqlCommand command = connection.CreateCommand();
        SqlTransaction transaction = connection.BeginTransaction();
        command.Connection = connection;
        command.Transaction = transaction;
        try
        {
            command.CommandText = _reportCommandText;
            command.ExecuteNonQuery();
            transaction.Commit();
        }
        catch (Exception ex)
        {
            transaction.Rollback();
        }
    }
}
```

PurchaseOrders.xml

```
<?xml version="1.0"?>
<aw:PurchaseOrder
  aw:PurchaseOrderNumber="99503"
  aw:OrderDate="1999-10-20"
  xmlns:aw="http://www.adventure-works.com">
  <aw:Address aw:Type="Shipping">
    <aw:Name>Ellen Adams</aw:Name>
    <aw:Street>123 Maple Street</aw:Street>
    <aw:City>Mill Valley</aw:City>
    <aw:State>CA</aw:State>
    <aw:Zip>10999</aw:Zip>
    <aw:Country>USA</aw:Country>
  </aw:Address>
  <aw:Address aw:Type="Billing">
    <aw:Name>Tai Yee</aw:Name>
    <aw:Street>8 Oak Avenue</aw:Street>
    <aw:City>Old Town</aw:City>
    <aw:State>PA</aw:State>
    <aw:Zip>95819</aw:Zip>
    <aw:Country>USA</aw:Country>
  </aw:Address>
  <aw:DeliveryNotes>Please leave packages in shed by driveway.</aw:DeliveryNotes>
  <aw:Items>
    <aw:Item aw:PartNumber="872-AA">
      <aw:ProductName>Lawnmower</aw:ProductName>
      <aw:Quantity>1</aw:Quantity>
      <aw:USPrice>148.95</aw:USPrice>
      <aw:Comment>Confirm this is electric</aw:Comment>
    </aw:Item>
    <aw:Item aw:PartNumber="926-AA">
      <aw:ProductName>Baby Monitor</aw:ProductName>
      <aw:Quantity>2</aw:Quantity>
      <aw:USPrice>39.98</aw:USPrice>
      <aw:ShipDate>1999-05-21</aw:ShipDate>
    </aw:Item>
  </aw:Items>
</aw:PurchaseOrder>
```

FeaturedBooks.xml

```
<?xml version="1.0" encoding="utf-8" ?>
<featured>
  <book>
    <id>1</id>
    <title>Science</title>
  </book>
  <book>
    <id>1</id>
    <title>Math</title>
  </book>
  <book>
    <id>1</id>
    <title>History</title>
  </book>
</featured>
```

#### NEW QUESTION 10

The PurchaseOrders.xml file contains all of the purchase orders for the day. You need to query the XML file for all of the shipping addresses. Which code segment should you use?

- ☐ A. 

```
XElement root = XElement.Load("PurchaseOrders.xml");
XNamespace aw = "http://www.adventure-works.com";
IEnumerable<XElement> address =
    from el in root.Elements(aw + "Items")
    where (string)el.Attribute(aw + "Type") == "Billing"
    select el;
foreach (XElement element in address)
{
    Console.WriteLine(element);
}
```
- ☐ B. 

```
XElement root = XElement.Load("PurchaseOrders.xml");
XNamespace aw = "http://www.adventure-works.com";
IEnumerable<XElement> address =
    from el in root.Elements(aw + "Address")
    where (string)el.Attribute(aw + "Type") == "Shipping"
    select el;
foreach (XElement element in address)
{
    Console.WriteLine(element);
}
```
- ☐ C. 

```
XElement root = XElement.Load("PurchaseOrders.xml");
XNamespace aw = "http://www.adventure-works.com";
IEnumerable<XElement> address =
    from el in root.Elements(aw + "Address")
    where (string)el.Attribute(aw + "Type") == "Billing"
    select el;
foreach (XElement element in address)
{
    Console.WriteLine(element);
}
```
- ☐ D. 

```
XElement root = XElement.Load("PurchaseOrders.xml");
XNamespace aw = "http://www.adventure-works.com";
IEnumerable<XElement> address =
    from el in root.Elements(aw + "Items")
    where (string)el.Attribute(aw + "Type") == "Shipping"
    select el;
foreach (XElement element in address)
{
    Console.WriteLine(element);
}
```

- A. Option A  
 B. Option B  
 C. Option C  
 D. Option D

Answer: B

#### NEW QUESTION 11

You need to configure the server to self-host the bookstore's Web API application. Which code segment should you use?



- ☐ A. 

```
var config = new HttpSelfHostConfiguration(_baseAddress);
config.Filters.Add(
    name: "DefaultApi",
    routeTemplate: "api/{controller}/{id}",
    defaults: new { id = RouteParameter.Optional }
);
var server = new HttpSelfHostServer(config);
server.Wait().OpenAsync();
```
- ☐ B. 

```
var config = new HttpSelfHostConfiguration(_baseAddress);
config.Routes.MapHttpRoute(
    name: "DefaultApi",
    routeTemplate: "{controller}s/{id}",
    defaults: new { id = RouteParameter.Optional }
);
var server = new HttpSelfHostServer(config);
server.OpenAsync().Wait();
```
- ☐ C. 

```
var config = new HttpSelfHostConfiguration(_baseAddress);
config.Routes.MapHttpRoute(
    name: "DefaultApi",
    routeTemplate: "api/{controller}s/{id}",
    defaults: new { id = RouteParameter.Optional }
);
var server = new HttpSelfHostServer(config);
server.OpenAsync().Wait();
```
- ☐ D. 

```
var config = new HttpSelfHostConfiguration(_baseAddress);
config.Routes.MapHttpRoute(
    name: "DefaultApi",
    routeTemplate: "{controller}/{id}",
    defaults: new { id = RouteParameter.Optional }
);
var server = new HttpSelfHostServer(config);
server.Wait().OpenAsync();
```

- A. Option A  
 B. Option B  
 C. Option C  
 D. Option D

**Answer: C**

**Explanation:**

MapHttpRoute Method

Maps the specified route template. Use the option with "api/...

**NEW QUESTION 13**

You are preparing to write the data access code for the children's book area of the web site. You need to review the requirements and identify the appropriate data access technology. What should you do?

- A. Use ADO.NET Entity Framework.  
 B. Use a Web Service.  
 C. Use the WCF Data Services.  
 D. Use LINQ to SQL.

**Answer: A**

**NEW QUESTION 17**

The PurchaseOrders.xml file contains all of the purchase orders for the day. You need to query the XML file for all of the billing addresses. Which code segment should you use?



- ☐ A. 

```
XElement root = XElement.Load("PurchaseOrders.xml");
XNamespace aw = "http://www.adventure-works.com";
IEnumerable<XElement> address =
    from el in root.Elements(aw + "Items")
    where (string)el.Attribute(aw + "Type") == "Shipping"
    select el;
foreach (XElement element in address)
{
    Console.WriteLine(element);
}
```
- ☐ B. 

```
XElement root = XElement.Load("PurchaseOrders.xml");
XNamespace aw = "http://www.adventure-works.com";
IEnumerable<XElement> address =
    from el in root.Elements(aw + "Address")
    where (string)el.Attribute(aw + "Type") == "Shipping"
    select el;
foreach (XElement element in address)
{
    Console.WriteLine(element);
}
```
- ☐ C. 

```
XElement root = XElement.Load("PurchaseOrders.xml");
XNamespace aw = "http://www.adventure-works.com";
IEnumerable<XElement> address =
    from el in root.Elements(aw + "Items")
    where (string)el.Attribute(aw + "Type") == "Billing"
    select el;
foreach (XElement element in address)
{
    Console.WriteLine(element);
}
```
- ☐ D. 

```
XElement root = XElement.Load("PurchaseOrders.xml");
XNamespace aw = "http://www.adventure-works.com";
IEnumerable<XElement> address =
    from el in root.Elements(aw + "Address")
    where (string)el.Attribute(aw + "Type") == "Billing"
    select el;
foreach (XElement element in address)
{
    Console.WriteLine(element);
}
```

- A. Option A  
B. Option B  
C. Option C  
D. Option D

Answer: D

#### NEW QUESTION 18

DRAG DROP

You need to update the GetBook() method to retrieve book data by using ADO.NET. You have the following code:

```
public Book GetBook(int id)
{
    using (var conn = new SqlConnection(_connectionString))
    using (var cmd = conn.CreateCommand())
    { Target 1
    cmd.CommandText = Target 2
    Target 3
    using (var reader = cmd.ExecuteReader ())
    {
        if (!reader.Read())
        {
            return null;
        }
        return new Book
        { Target 4
        Name = Target 5
        };
    }
    }
}
```

Which code segments should you include in Target 1, Target 2, Target 3, Target 4 and Target 5 to complete the code? (To answer, drag the appropriate code segments to the correct targets in the answer area. Each code segment may be used once, more than once, or not at all. You may need to drag the split bar between panes or scroll to view content.)

#### Code Segments

conn.Open();

conn.Read();

"SELECT id, name FROM Books WHERE id = @id";

"SELECT id, name FROM Books WHERE id = id";

cmd.Parameters.AddWithValue("@id", id);

cmd.Parameters.AddWithValue("@id", "id");

Id = reader.GetInt32(reader.GetOrdinal("id")),

Id = reader.GetGuid(reader.GetOrdinal(@id)),

reader.GetString(reader.GetOrdinal("name"))

reader.GetString(reader.GetOrdinal(@name))

#### Answer Area

Target 1:

Code Segment

Target 2:

Code Segment

Target 3:

Code Segment

Target 4:

Code Segment

Target 5:

Code Segment

- A. Mastered  
B. Not Mastered

Answer: A

Explanation:

Target 1:

conn.Open();

Target 2:

"SELECT id, name FROM Books WHERE id = id";

Target 3:

cmd.Parameters.AddWithValue("@id", id);

Target 4:

Id = reader.GetGuid(reader.GetOrdinal(@id)),

Target 5:

reader.GetString(reader.GetOrdinal(@name))

### NEW QUESTION 19

#### HOTSPOT

ReportApp will shut down every night. However, data from the searches performed during the night must still be collected.

Based on the security requirements, which line of code should you insert into the WebApiConfig file? To answer, select the appropriate options in the answer area.

#### Answer Area

config. 

Filters.	
Formatters.	Add
Initializer.	Remove

 (config. 

Filters.	
Formatters.	JsonFormatter
Initializer.	XmlFormatter

 );

- A. Mastered
- B. Not Mastered

**Answer: A**

#### Explanation:

Scenario: The Web API must only accept one data format.

The MVC front-end layer and the Web API will communicate by using JSON.

The most common approach to support JSON only is to clear other formatters and leave only JsonMediaTypeFormatter around.

Given an instance of HttpConfiguration you'd simply clear all and re-add JsonMediaTypeFormatter:

```
configuration.Formatters.Clear();
```

```
configuration.Formatters.Add(new JsonMediaTypeFormatter());
```

References: <http://www.strathweb.com/2013/06/supporting-only-json-in-asp-net-web-api-the-right-way/>

### NEW QUESTION 22

You need to implement a solution that meets the logging requirements.

Which class should you use?

- A. RouteAttribute
- B. RoutePrefixAttribute
- C. AcceptVerbsAttribute
- D. ActionFilterAttribute

**Answer: D**

### NEW QUESTION 24

Note: This question is part of a series of questions that present the same scenario. Each question in the series contains a unique solution that might meet the stated goals. Some question sets might have more than one correct solution, while others might not have a correct solution.

After you answer a question in this section, you will NOT be able to return to it. As a result, these questions will not appear in the review screen.

You need to ensure that testing, development, and end user access requirements are met. Solution: Move the Web App backend to a private VNet.

Does the solution meet the goal?

- A. Yes
- B. No

**Answer: A**

#### Explanation:

Scenario: All testing must interact directly with the Web App backend. Automated testing of the solution is performed using a remote third-party testing solution.

### NEW QUESTION 25

You need to ensure that computed events are processed correctly.

What should you do?

- A. Move the WebJob to a different App Service plan.
- B. Select a deployment slot for the WebJob.
- C. Disable WebJobs during deployments.
- D. Create an additional upgrade domain.

**Answer: B**

#### Explanation:

Scenario: An Azure WebJob named EventJob will be deployed with the Event Service Web App. The WebJob:

References: <https://stackify.com/azure-deployment-slots/>

### NEW QUESTION 30

You need to configure DNS for the Event service. How many DNS entries should you create?

- A. 1
- B. 2
- C. 3
- D. 4

**Answer: C**



Explanation:

Scenario: Regional access to the Event Service API  
Data for partners in Germany and Brazil must be served from Azure datacenters in their respective geographies unless there is a regional Azure outage. All other partners must use the US West Azure datacenter.

NEW QUESTION 34

DRAG DROP

You need to add code at line SU10 to ensure that event validation can occur.  
How should you complete the code? To answer, drag the appropriate code segments to the correct locations. Each code segment may be used once, more than once, or not at all. You may need to split bar between panes or scroll to view content.  
NOTE: Each correct selection is worth one point.

Code Segments

DirectoryInfo

IFileProvider

IFileInfo

PhysicalFileProvider

EmbeddedFileProvider

CompositeFileProvider

IHostingEnvironment

IApplicationBuilder

Answer Area

services.AddSingleton<

Code Segment

,

Code Segment

>(sp=>

{

return new

Code Segment

(sp.GetService<

Code Segment

>().ContentRootPath);

});

- A. Mastered
- B. Not Mastered

Answer: A

Explanation:

Answer Area

services.AddSingleton<

IApplicationBuilder

,

IHostingEnvironment

>(sp=>

{

return new

IApplicationBuilder

(sp.GetService<

IHostingEnvironment

>().ContentRootPath);

});

Case Study: 6 Mix Questions

NEW QUESTION 38

You are building an ADO.NET Entity Framework application.  
You need to validate the conceptual schema definition language (CSDL), store schema definition language (SSDL), and mapping specification language (MSL) files.  
Which Entity Data Model tool can you use? (Each correct answer presents a complete solution. Choose all that apply.)

- A. EDM Generator (EdmGen.exe)
- B. ADO.NET Entity Data Model Designer
- C. Entity Data Model Wizard
- D. Update Model Wizard

Answer: AB

NEW QUESTION 40

DRAG DROP

You are developing an ASP.NET Web API action method.  
The action method must return the following JSON in the message body.  
{ "Name ":" Fabrikam", "Vendor Id": 9823, "Items": ["Apples", "Oranges"]} You need to return an anonymous object that is serialized to JSON.  
What should you do? (To answer, drag the appropriate code segments to the correct location or locations in the answer area. Each code segment may be used once, more than once, or not at all. You may need to drag the split bar between panes or scroll to view content.

	Answer Area
"Fabrikam", VendorNumber = 9823,	<pre> public object Get() {     [ ]     {         Name = [ ]         Items = [ ]     } };         </pre>
"Fabrikam", VendorNumber = "9823",	
new List<string> { "Apples", "Oranges" }	
new List<string> { "Apples, Oranges" }	
return new List<string>	
return new	

- A. Mastered  
B. Not Mastered

Answer: A

#### Explanation:

Box 1: return new List<string>

Box 2: "Fabrikam", VendorNumber=9823, Box 3: new list<string>{"Apples", "oranges"}

#### NEW QUESTION 41

##### DRAG DROP

You are developing an ASP.NET Web API application that will be consumed by a web browser via a composite application that is served from another web domain.

You need to configure the Web API.

What should you do? (To answer, drag the appropriate XML elements to the correct location or locations in the answer area. Each XML element may be used once, more than once, or not at all. You may need to drag the split bar between panes or scroll to view content.)

	Answer Area
Access-Control-Allow-Origin	<pre> &lt;httpProtocol&gt;   &lt;customHeaders&gt;     &lt;add name="Access-Control-Allow-Origin"       value="[ ]" /&gt;     &lt;add name="[ ]"       value="PUT, DELETE"/&gt;     &lt;add name="[ ]"       value="[ ]" /&gt;   &lt;/customHeaders&gt; &lt;/httpProtocol&gt;         </pre>
Access-Control-Allow-Headers	
Access-Control-Allow-Methods	
Access-Control-Request-Method	
Access-Control-Request-Headers	
*	
POST, GET	
Content-Type	

- A. Mastered  
B. Not Mastered

Answer: A

#### Explanation:

Access-Control-Allow-Origin

Access-Control-Request-Method

Access-Control-Request-Headers

POST, GET

Answer Area

```

<httpProtocol>
  <customHeaders>
    <add name="Access-Control-Allow-Origin"
      value="*" />
    <add name="Access-Control-Allow-Methods"
      value="PUT, DELETE"/>
    <add name="Access-Control-Allow-Headers"
      value="Content-Type" />
  </customHeaders>
</httpProtocol>

```

#### NEW QUESTION 46

You are developing an ASP.NET MVC web application that contains the following HTML.

```
<table id= "customer" ></table>
```

You also have an ASP.NET Web API application that contains a call for retrieving customers. You must send and retrieve the data in the most compact format possible.

You need to update the HTML for the customers table to contain data from the Web API application.

Which script segment should you use?



☐ A. 

```
<script>
$(function () {
    var $customers = $("#customers");
    $.ajax({
        url: "api/customers",
        dataType: "json",
        success: function (data) {
            ...
        }
    });
});
</script>
```

☐ B. 

```
<script>
$(function () {
    var $customers = $("#customers");
    $.xml({
        url: "api/customers",
        dataType: "ajax",
        success: function (data) {
            ...
        }
    });
});
</script>
```

☐ C. 

```
<script>
$(function () {
    var $customers = $("#customers");
    $.json({
        url: "api/customers",
        dataType: "ajax",
        success: function (data) {
            ...
        }
    });
});
</script>
```

☐ D. 

```
<script>
$(function () {
    var $customers = $("#customers");
    $.ajax({
        url: "api/customers",
        dataType: "xml",
        success: function (data) {
            ...
        }
    });
});
</script>
```

- A. Option A
- B. Option B
- C. Option C
- D. Option D

Answer: A

#### NEW QUESTION 51

DRAG DROP

You are developing an ASP.NET MVC Web API image management application. The application must meet the following requirements:  
 ?It must send or receive image data without the use of a buffer.

?It must allow up to 4 MB of image data to be received.

?It must allow up to 3 MB of image data to be sent.

You need to complete the code to meet the requirements.

What should you do? (To answer, drag the appropriate code segments to the correct location or locations in the answer area. Each code segment may be used once, more than once, or not at all. You may need to drag the split bar between panes or scroll to view content.)

config

server

MaxBufferSize

MaxReceivedMessageSize

MaxConcurrentRequests

Streamed

Buffered

Answer Area

```

class Program
{
    private static string _baseAddress = "http://localhost:8080/";

    static void Main(string[] args)
    {
        var config = new HttpSelfHostConfiguration(_baseAddress);
        config.Routes.MapHttpRoute(
            name: "DefaultApi",
            routeTemplate: "api/{controller}/{id}",
            defaults: new { id = RouteParameter.Optional }
        );

        _____ = 1024 * 1024 * 3;

        _____ = 1024 * 1024 * 4;

        _____.TransferMode =

        TransferMode. _____ ;

        var server = new HttpSelfHostServer(config);
        server.OpenAsync().Wait();
    }

```

- A. Mastered  
 B. Not Mastered

Answer: A

Explanation:

```

class Program
{
    private static string _baseAddress = "http://localhost:8080/";

    static void Main(string[] args)
    {
        var config = new HttpSelfHostConfiguration(_baseAddress);
        config.Routes.MapHttpRoute(
            name: "DefaultApi",
            routeTemplate: "api/{controller}/{id}",
            defaults: new { id = RouteParameter.Optional }
        );

        config.MaxBufferSize = 1024 * 1024 * 3;

        config.MaxReceivedMessageSize = 1024 * 1024 * 4;

        config.TransferMode =

        TransferMode.Streamed ;

        var server = new HttpSelfHostServer(config);
        server.OpenAsync().Wait();
    }

```

## NEW QUESTION 52

You are developing an ASP.NET MVC application.

Applications can be deployed to remote servers only by administrators who have elevated privileges. The administrators do not have access to Visual Studio 2012.

You need to select a deployment tool to deploy the application to remote servers for testing. Which tool should you use?

- A. Copy Web Site Tool
- B. One-Click Publish
- C. Publish Web Site Tool
- D. Web Deployment Package

**Answer:** D

#### NEW QUESTION 54

You are preparing to develop a set of libraries for a company. The libraries must be shared across the company. You need to create a remote NuGet feed that exposes the libraries. What should you do? (Each answer presents part of the solution. Choose all that apply.)

- A. Install the NuGet.Feed Package.
- B. Install the NuGet.Server Package.
- C. Configure the Packages folder located in the system.webserver section of the web application's Web.config.
- D. Create a new Empty Web Site in Visual Studio 2012.
- E. Configure the Packages folder located in the appSettings section of the web application's Web.config.
- F. Add packages to the Packages folder.
- G. Create a new Empty Web Application in Visual Studio 2012.

**Answer:** BEFG

#### Explanation:

Explanation/Reference:



#### NEW QUESTION 55

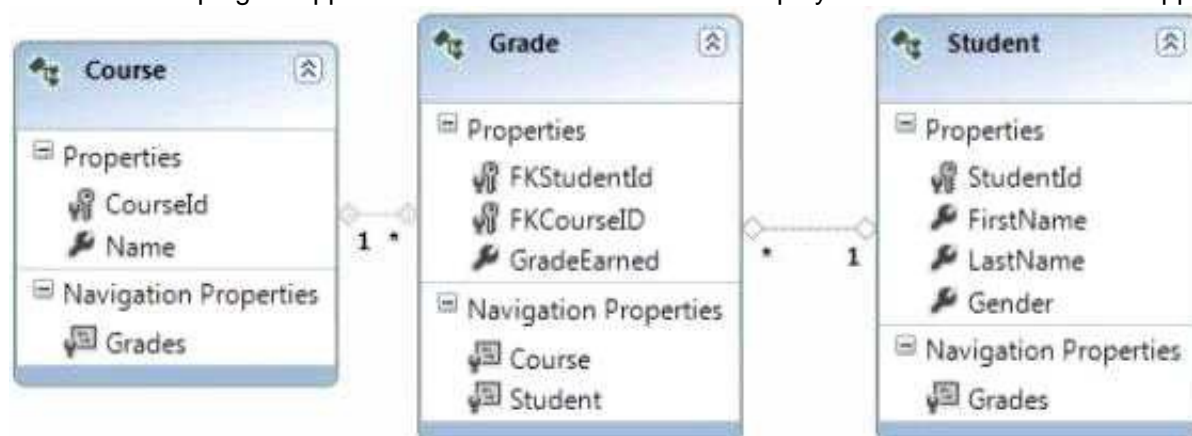
You are developing a library to support multiple ASP.NET MVC web applications on a shared server. The library provides implementations of security algorithms. If a problem with any of the security algorithms is discovered, a new version of the library must be created and deployed. Application downtime during the update must be minimized. You need to ensure that the new version of the library will be used by all applications as soon as possible. What should you do?

- A. Build the web applications and include the security assembly as an embedded resource
- B. When an update is needed, copy the new assembly to the bin directory for the application.
- C. Sign all assemblies in each application with the same key used to sign the security assembly. When an update is needed, create a new key pair and re-sign all assemblies.
- D. Build the security assembly as a netmodule in a shared location. Use the assembly linker to merge the netmodule into the assemblies for the application
- E. When an update is needed, update the netmodule in the shared location.
- F. Install the security assembly in the Global Assembly Cache (GAC). When an update is needed, update the assembly in the GAC.

**Answer:** D

#### NEW QUESTION 56

You are developing an application in Visual Studio 2012 to display student information. The application contains the following Entity Framework model.



The application contains a WCF data service named DirectoryService.svc.

You need to create a query expression to display all of the grades for students whose first name is "John". How should you build the expression?

- A. `http://localhost:54946/DirectoryService.svc/Students?$filter=FirstName eq 'John' &$expand=Grades`
- B. `http://localhost:54946/DirectoryService.svc/Students?$filter=FirstName eq 'John'/Grades`
- C. `http://localhost:54946/DirectoryService.svc/Students?$filter=FirstName = 'John' &$expand=Grades`
- D. `http://localhost:54946/DirectoryService.svc/Grades/Students?$filter=FirstName eq 'John'`

**Answer:** A

#### NEW QUESTION 59

You are developing a WCF service that compares several data sources. The service takes a long time to complete. The service must meet the following requirements:

?The client must be able to continue processing while the service is running.

?The service must initiate communication with the client application when processing is complete.

You need to choose a message pattern to meet the requirements. Which message pattern should you choose?



- A. One Way
- B. Streaming
- C. Duplex
- D. Request/Reply

Answer: C

### NEW QUESTION 63

DRAG DROP

You are developing a WCF service.

You need to implement transport security by using NTLM authentication and NetTcpBindings.

Which configuration values should you use? (To answer, drag the appropriate configuration values to the correct location or locations in the answer area. Each configuration value may be used once, more than once, or not at all. You may need to drag the split bar between panes or scroll to view content.)

Configuration Values	Answer Area
binding="netTcpBinding"	<system.serviceModel>
binding="Duplex"	<protocolMapping>
binding="NtlmTcp"	<add scheme="https" />
mode="netBindingTcp"	</protocolMapping>
mode="Transport"	<bindings>
mode="Duplex"	<wsHttpBinding>
clientCredentialType="netTcpBinding"	<binding>
clientCredentialType="NtlmTcp"	<security >
clientCredentialType="Ntlm"	<transport />
	</security>
	</binding>
	</wsHttpBinding>
	</bindings>
	</system.serviceModel>

- A. Mastered
- B. Not Mastered

Answer: A

Explanation:

Configuration Values	Answer Area
binding="Duplex"	<system.serviceModel>
binding="NtlmTcp"	<protocolMapping>
mode="netBindingTcp"	<add scheme="https" binding="netTcpBinding" />
mode="Duplex"	</protocolMapping>
clientCredentialType="netTcpBinding"	<bindings>
clientCredentialType="NtlmTcp"	<wsHttpBinding>
	<binding>
	<security mode="Transport" >
	<transport clientCredentialType="Ntlm" />
	</security>
	</binding>
	</wsHttpBinding>
	</bindings>
	</system.serviceModel>

### NEW QUESTION 64

You are developing a WCF service.

A new service instance must be created for each client request. You need to choose an instancing mode.

Which instancing mode should you use?

- A. Single
- B. PerRequest
- C. PerCall
- D. Multiple
- E. PerSession

Answer: C

## NEW QUESTION 69

### DRAG DROP

You are developing a WCF service.

You need to implement transport security by using NTLM authentication and NetTcpBindings.

Which configuration values should you use? (To answer, drag the appropriate configuration values to the correct location or locations in the answer area. Each configuration value may be used once, more than once, or not at all. You may need to drag the split bar between panes or scroll to view content.)

	Answer Area
binding="netTcpBinding"	<system.serviceModel> <protocolMapping> <add scheme="https" /> </protocolMapping> <bindings> <wsHttpBinding> <binding> <security> <transport> </transport> </security> </binding> </wsHttpBinding> </bindings> </system.serviceModel>
binding="Transport"	
binding="Ntlm"	
mode="netTcpBinding"	
mode="Transport"	
mode="Ntlm"	
clientCredentialType="netTcpBinding"	
clientCredentialType="Transport"	
clientCredentialType="Ntlm"	

- A. Mastered
- B. Not Mastered

Answer: A

### Explanation:

```
<system.serviceModel>
  <protocolMapping>
    <add scheme="https" binding="netTcpBinding" />
  </protocolMapping>
  <bindings>
    <wsHttpBinding>
      <binding>
        <security mode="Transport">
          <transport clientCredentialType="Ntlm" />
        </security>
      </binding>
    </wsHttpBinding>
  </bindings>
</system.serviceModel>
```

## NEW QUESTION 71

### DRAG DROP

You are developing an ASP.NET MVC Web API application. The application must meet the following requirements:

?It must send or receive data without the use of a buffer.

?It must allow up to 1 MB of data to be received.

?It must allow up to 2 MB of data to be sent. You need to complete the code to meet the requirements.

What should you do? (To answer, drag the appropriate code segments to the correct location or locations in the answer area. Each code segment may be used once, more than once, or not at all. You may need to drag the split bar between panes or scroll to view content.)

config

server

MaxBufferSize

MaxReceivedMessageSize

MaxConcurrentRequests

Streamed

Buffered

Answer Area

```

class Program
{
    private static string _baseAddress = "http://localhost:8080/";

    static void Main(string[] args)
    {
        var config = new HttpSelfHostConfiguration(_baseAddress);
        config.Routes.MapHttpRoute(
            name: "DefaultApi",
            routeTemplate: "api/{controller}/{id}",
            defaults: new { id = RouteParameter.Optional }
        );

        [ ] . [ ] = 1024 * 1024 * 2;

        [ ] . [ ] = 1024 * 1024;

        [ ] .TransferMode =

        TransferMode. [ ] ;

        var server = new HttpSelfHostServer(config);
        server.OpenAsync().Wait();
    }
}
                    
```

- A. Mastered  
B. Not Mastered

Answer: A

Explanation:

```

class Program
{
    private static string _baseAddress = "http://localhost:8080/";

    static void Main(string[] args)
    {
        var config = new HttpSelfHostConfiguration(_baseAddress);
        config.Routes.MapHttpRoute(
            name: "DefaultApi",
            routeTemplate: "api/{controller}/{id}",
            defaults: new { id = RouteParameter.Optional }
        );
    }
}
                    
```

Buffered

Streamed

config

MaxBufferSize

MaxConcurrentRequests

server

= 1024 \* 1024 \* 2;

= 1024 \* 1024;

.TransferMode =

TransferMode. ;

```

var server = new HttpSelfHostServer(config);
server.OpenAsync().Wait();
}
                    
```

#### NEW QUESTION 74

You are designing an ASP.NET Web API application.

You need to select an HTTP verb to allow blog administrators to remove a comment. Which HTTP verb should you use?

- A. PUT  
B. DELETE  
C. POST  
D. GET

Answer: B

#### NEW QUESTION 78

You are developing an ASP.NET MVC application. The application is an order processing system that uses the ADO.NET Entity Framework against a SQL Server database. It has a controller that loads a page that displays all orders along with customer information. Lazy loading has been disabled.



The Order class is shown below.

```
public partial class Order
{
    ...
    public string CustomerID { get; set; }
    ...
    public virtual Customer Customer { get; set; }
}
```

You need to return the orders and customer information in a single round trip to the database. Which code segment should you use?

- ☐ A. 

```
public ActionResult Index()
{
    IQueryable<Order> orders = db.Orders;
    orders = orders.Include("Customer");
    return View(orders.ToList());
}
```
- ☐ B. 

```
public ActionResult Index()
{
    IQueryable<Order> orders = db.Orders.Include("Order.Customer");
    return View(orders.ToList());
}
```
- ☐ C. 

```
public ActionResult Index()
{
    IQueryable<Order> orders = db.Orders;
    orders.Select(o => o.Customer).Load();
    return View(orders.ToList());
}
```
- ☐ D. 

```
public ActionResult Index()
{
    IQueryable<Order> orders = db.Orders;
    return View(orders.ToList());
}
```

- A. Option A  
 B. Option B  
 C. Option C  
 D. Option D

**Answer:** A

#### NEW QUESTION 83

You are developing an ASP.NET MVC application.

Deployment administrators do not have access to Visual Studio 2102, but will have the elevated permissions required to deploy the application to the servers.

You need to select a deployment tool for use by the deployment administrators. Which tool should you use?

- A. Publish Web Site Tool  
 B. Web Deployment Package  
 C. One-Click Publish  
 D. Deployment Package Editor

**Answer:** B

#### NEW QUESTION 84

HOTSPOT

You are developing an ASP.NET MVC application named ContosoWebApp. You are ready to deploy the application to your production web server.

You need to import the publishing profile.

Which menu item should you use? (To answer, select the appropriate menu item in the answer area).



- A. Mastered
- B. Not Mastered

Answer: A

Explanation:



## NEW QUESTION 89

### HOTSPOT

You are developing an ASP.NET MVC application. It is ready for deployment to the production web server.

A local SQL Express .MDF file was used by the application during development The deployment has the following requirements:

?The deployment must merge the assemblies on the local machine with those on the host.

?The deployment must publish the local database to the remote Microsoft SQL server.

You need to configure the web package settings for deployment.

Which settings should you use? (To answer, select the appropriate setting or settings in the answer area.)

Package/Publish enables you to deploy your Web application to Web servers.  
[Learn more about Package/Publish Web](#)

Items to deploy (applies to all deployment methods)

Only files needed to run this application  
All files in this project  
All files in this project folder

☐ Exclude generated debug symbols  
☐ Exclude files from the App\_Data folder  
☐ Precompile this application before publishing

Items to deploy (applies to Web Deploy only)

☐ Include all databases configured in Package/Publish SQL tab [Open Settings](#)  
☐ Include IIS settings as configured in IIS Express  
☐ Include application pool settings used by this Web project

- A. Mastered
- B. Not Mastered

**Answer:** A

**Explanation:**

Package/Publish enables you to deploy your Web application to Web servers.  
[Learn more about Package/Publish Web](#)

Items to deploy (applies to all deployment methods)

Only files needed to run this application  
All files in this project  
All files in this project folder

☐ Exclude generated debug symbols  
☐ Exclude files from the App\_Data folder  
☐ Precompile this application before publishing

Items to deploy (applies to Web Deploy only)

☐ Include all databases configured in Package/Publish SQL tab [Open Settings](#)  
☐ Include IIS settings as configured in IIS Express  
☐ Include application pool settings used by this Web project

## NEW QUESTION 92

### HOTSPOT

You are supporting an application that uses the ADO.NET Entity Framework to query and access data. The latest version of a tool will add new templates and wizards that will enhance developer productivity.

You need to update the tool.

Which Visual Studio 2012 menu item should you choose? (To answer, select the appropriate menu item in the answer area.)

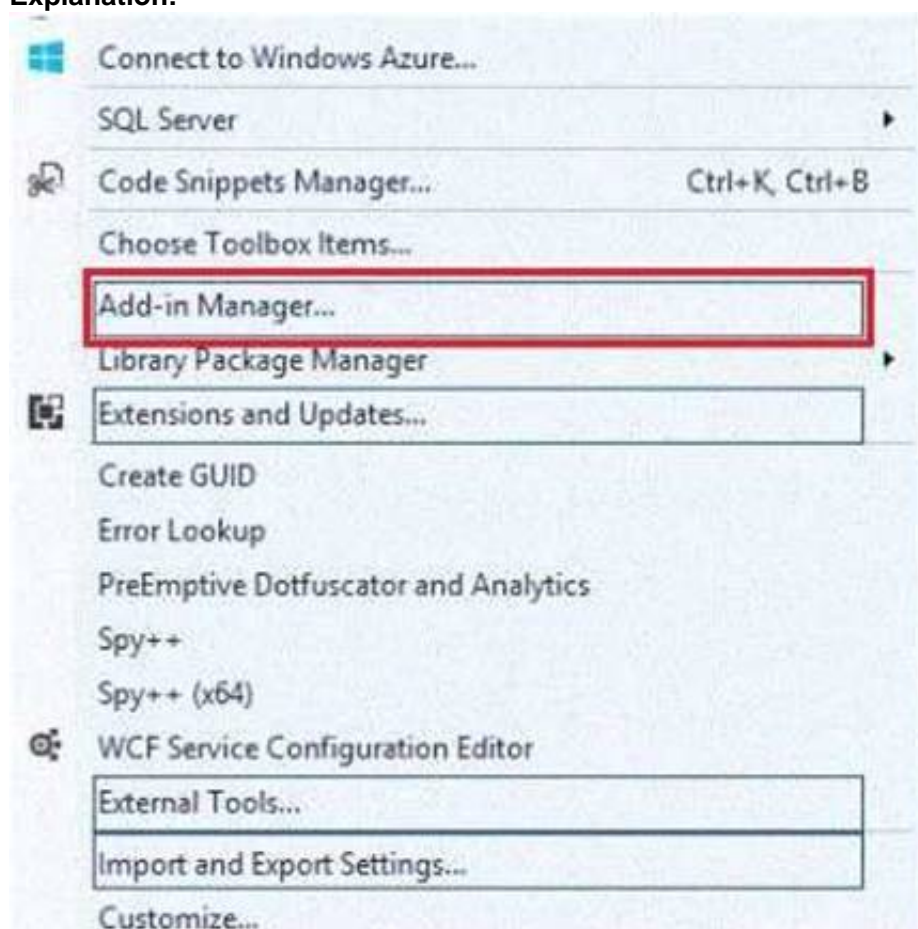




- A. Mastered
- B. Not Mastered

**Answer:** A

**Explanation:**



#### NEW QUESTION 95

You are developing an ASP.NET MVC application that displays a report. The report includes large images that are stored in a database. Members of the EntityClient namespace are used to access the database through the ADO.NET Entity Framework data model. You need to prevent memory exceptions while generating a report using the EntityDataReader type. Which CommandBehavior type should you use?

- A. FastForwardReadOnly
- B. SequentialAccess
- C. SingleResult
- D. SingleRow

**Answer:** B

**Explanation:**

SequentialAccess

Provides a way for the DataReader to handle rows that contain columns with large binary values. Rather than loading the entire row, SequentialAccess enables the DataReader to load data as a stream.

#### NEW QUESTION 97

DRAG DROP

You are developing a WCF service application. The application must meet the following requirements:

?Operations must have 30 second timeouts.  
?The service must have a transaction scope.  
?Transactions must flow from the client to the server.  
You need to write a transactional service contract and implementation class to meet the requirements.  
You have the following code:

```
Target 1
interface ITransactionalService
{
    [OperationContract]
    Target 2
    Guid Foo (string x1, int x2);
}
Target 3
public class TransactionService: ITransactionalService
{
    Target 4
    public Guid Foo (string x1, int x2)
    {
        throw new NotImplementedException ();
    }
}
```

Which code segments should you include in Target 1, Target 2, Target 3 and Target 4 to complete the code? (To answer, drag the appropriate code segments to the correct targets in the answer area. Each code segment may be used once, more than once, or not at all. You may need to drag the split bar between panes or scroll to view content.)

Code Segments

[TransactionFlow(TransactionFlowOption.Allowed)]

[TransactionFlow(TransactionFlowOption.Mandatory)]

[OperationBehavior(TransactionScopeRequired = true)]

[OperationBehavior(TransactionScope.Required)]

[ServiceBehavior(TransactionTimeout = "00:00:30")]

[ServiceBehavior(TransactionTimeout = 30)]

[ServiceContract]

Answer Area

Target 1:

Code Segment

Target 2:

Code Segment

Target 3:

Code Segment

Target 4:

Code Segment

- A. Mastered
- B. Not Mastered

Answer: A

Explanation:

Target 1:

[ServiceContract]

Target 2:

[TransactionFlow(TransactionFlowOption.Mandatory)]

Target 3:

[ServiceBehavior(TransactionTimeout = "00:00:30")]

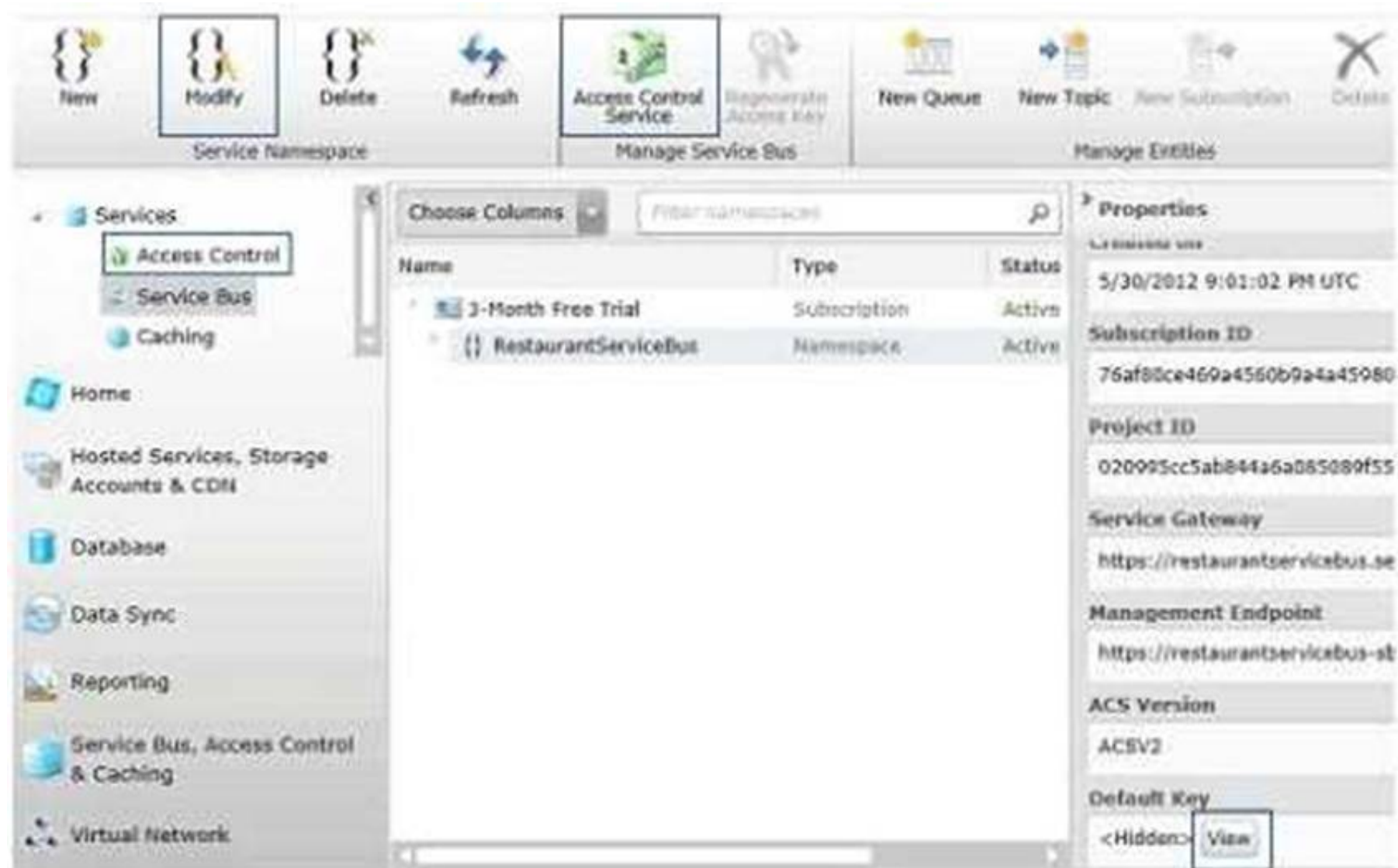
Target 4:

[OperationBehavior(TransactionScopeRequired = true)]

NEW QUESTION 100

HOTSPOT

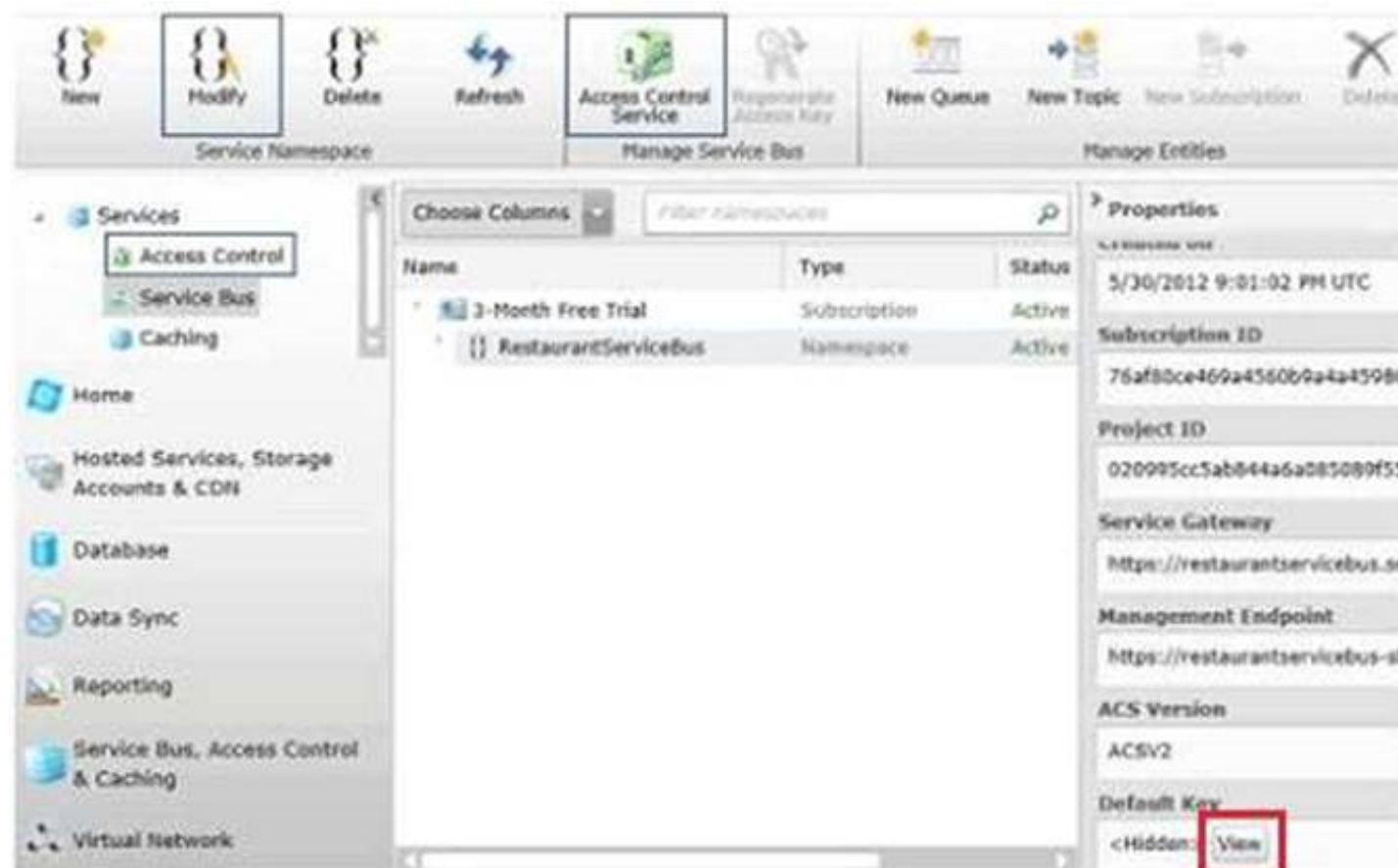
You are developing a WCF service in Visual Studio 2013 that integrates with the Microsoft Azure service bus relay. The Azure service bus namespace is named RestaurantServiceBus You need to obtain the issuer name and secret. What should you do? (To answer, select the appropriate option in the answer area.)



- A. Mastered
- B. Not Mastered

Answer: A

Explanation:



#### NEW QUESTION 105

DRAG DROP

You have a UI element library.

You need to build a NuGet package to integrate the library into your projects.

What should you do? (To answer, drag the appropriate code elements to the correct location or locations in the answer area. Each code element may be used once, more than once, or not at all. You may need to drag the split bar between panes or scroll to view content.)



Code Elements

nupkg

nuspec

Build

Pack

Answer Area

1. Define the package in a . Code file.

2. Build the package with the following command.

NuGet Code MyPackage. Code

- A. Mastered
- B. Not Mastered

Answer: A

Explanation:

Reference: Creating and Publishing a Package <http://docs.nuget.org/create/creating-and-publishing-a-package>

NEW QUESTION 110

DRAG DROP

You are configuring a web application for deployment.

You need to create a SetParameters.xml file to configure the IIS application pool. You have the following markup:

```
<?xml version="1.0" encoding="UTF-8"?>  
<parameters>  
  <setParameter  
    Target 1  
    Target 2  
  </setParameter>  
</parameters>
```

Which configuration values should you include in Target 1 and Target 2 to complete the markup? (To answer, drag the appropriate configuration values to the correct targets in the answer area. Each configuration value may be used once, more than once, or not at all. You may need to drag the split bar between panes or scroll to view content.)

Configuration Values

key="applicationPool"

name="applicationPool"

setting="applicationPool"

setting="MyServiceNameAppPool" />

param="MyServiceNameAppPool" />

value="MyServiceNameAppPool" />

Answer Area

Target 1: Configuration Value

Target 2: Configuration Value

- A. Mastered
- B. Not Mastered

Answer: A

Explanation:

Target 1: name="applicationPool"

Target 2: value="MyServiceNameAppPool" />

#### NEW QUESTION 113

You are developing an ASP.NET MVC application. The application has a page that updates an image stored in a database. Members of the EntityClient namespace are used to access an ADO.NET Entity Framework data model. Images and associated metadata are stored in a single database table. You need to run a single query that updates an image and associated metadata in the database while returning only the number of affected rows. Which method of the EntityCommand type should you use?

- A. ExecuteNonQuery()
- B. ExecuteScalar()
- C. ExecuteDbDataReader()
- D. ExecuteReader()

**Answer:** A

#### NEW QUESTION 115

You are designing an ASP.NET Web API application. You need to select an HTTP verb to allow blog administrators to modify the text of a comment. Which HTTP verb should you use?

- A. GET
- B. DELETE
- C. POST
- D. PUT

**Answer:** D

#### NEW QUESTION 118

You are preparing to develop a set of libraries that uses large data sets. The libraries must be shared across an organization and distributed to several servers. You need to create a remote NuGet feed that exposes the libraries for developer use. What should you do? (Each answer presents part of the solution. Choose all that apply.)

- A. Add packages to the Packages folder.
- B. Create a new Empty Web Application in Visual Studio.
- C. Configure the Packages folder located in the appSettings section of the web application's Web.config.
- D. Install the NuGet.DataFeed Package.
- E. Install the NuGet.Server Package.
- F. Create a new Empty Web Site in Visual Studio.

**Answer:** ABCE

#### Explanation:

Creating Remote Feeds

You can host a remote (or internal) feed on a server that runs IIS. Step 1 (B): Create a new Empty Web Application in Visual Studio Step 2 (E): Install the NuGet.Server Package

Step 3 (C): Configure the Packages folder

Step 4 (A): Add Packages to the Packages folder

Step 5: Deploy and run your brand new Package Feed! Reference: Hosting Your Own NuGet Feeds

#### NEW QUESTION 122

You are developing an ASP.NET MVC application that reads and writes data from a SQL Server database. You need to maintain data integrity including retrieving identical sets across reads in all situations that use transactions. Which isolation level should you use?

- A. Repeatable
- B. Serializable
- C. ReadUncommitted
- D. ReadCommitted

**Answer:** A

#### Explanation:

REPEATABLE READ

Specifies that statements cannot read data that has been modified but not yet committed by other transactions and that no other transactions can modify data that has been read by the current transaction until the current transaction completes.

#### NEW QUESTION 124

DRAG DROP

You are developing a RESTful application by using ASP.NET MVC. The application is a pet management system and implements the following method in a controller for retrieving pet data.

```
a.  
public Pet Get(int id)  
{  
    return new PetRepository().GetPetById(id);  
}
```

The method must only accept JSON data using the standard MIME type. You need to implement a controller that saves pet data and return a properly formatted HTTP/1.1 protocol response.

You have the following code:

```
public Target 1 Post ()
{
    if (Request.Content.Headers.ContentType.MediaType !=
        Target 2)
    {
        throw new HttpResponseException(JsonMessage);
    }
    Pet pet = new Pet ();
    var response = new Target 3 (pet,
        HttpStatusCode.Created);
    var relativePath = Target 4 ;
    response.Headers.Location = new Uri (Request.RequestUri,
        relativePath);
    return response;
}
```

Which code segments should you include in Target 1, Target 2, Target 3 and Target 4 to complete the code? {To answer, drag the appropriate code segments to the correct targets in the answer area. Each code segment may be used once, more than once, or not at all. You may need to drag the split bar between panes or scroll to view content.)

Code Segments

ActionResult

HttpResponseMessage<Pet>

HttpMessageContent

"/api/get/pet/" + pet.Id

"/pet/get/" + pet.Id

"/api/pet/" + pet.Id

"text/json"

"json"

"application/json"

Answer Area

Target 1: Code Segment

Target 2: Code Segment

Target 3: Code Segment

Target 4: Code Segment

- A. Mastered
- B. Not Mastered

Answer: A

Explanation:

Target 1:

HttpResponseMessage<Pet>

Target 2:

"application/json"

Target 3:

HttpResponseMessage<Pet>

Target 4:

"/api/pet/" + pet.Id

NEW QUESTION 129

DRAG DROP

You are developing an ASP.NET MVC Web API application.  
The methods of the Web API must return details about the result of the operation. You need to create methods to update and delete products.  
You have the following code:



```
public void PutProduct (int id, Product contact)
{
    contact.Id = id;
    if (!repository.Update(contact))
    {
        throw new Target 1 (
            new Target 2 (
                HttpStatusCode. Target 3 ));
    }
}
public HttpResponseMessage DeleteProduct (int id)
{
    repository.Remove (id);
    return new Target 4 (
        HttpStatusCode. Target 5 );
}
```

Which code segments should you include in Target 1, Target 2, Target 3, Target 4 and Target 5 to complete the code? (To answer, drag the appropriate code segments to the correct targets in the answer area. Each code segment may be used once, more than once, or not at all. You may need to drag the split bar between panes or scroll to view content.)

Code Segments	Answer Area
<div>HttpException</div> <div>HttpResponseMessage</div> <div>NotFound</div> <div>NoContent</div>	Target 1: <div>Code Segment</div>
	Target 2: <div>Code Segment</div>
	Target 3: <div>Code Segment</div>
	Target 4: <div>Code Segment</div>
	Target 5: <div>Code Segment</div>

- A. Mastered  
 B. Not Mastered

Answer: A

Explanation:

Target 1:	HttpException
Target 2:	HttpResponseMessage
Target 3:	NotFound
Target 4:	HttpResponseMessage
Target 5:	NoContent

#### NEW QUESTION 132

DRAG DROP

You are developing an ASP.NET Web API for a home inventory management system. You need to limit access to users with IP addresses based only in the United States. You have the following code:

```
public class HomeInventoryAuthorization: Target 1
{
    public override void OnAuthorization (Target 2 context)
    {
        var isUSIP = IP.IsUSIPAddress (context);
    }
}
```

Which code segments should you include in Target 1 and Target 2 to complete the code? (To answer, drag the appropriate code segments to the correct targets in the answer area. Each code segment may be used once, more than once, or not at all. You may need to drag the split bar between panes or scroll to view content.)

Code Segments

HttpContext

AuthorizeAttribute

AuthorizationFilterAttribute

AuthorizationContext

CountryContext

Answer Area

Target 1:

Code Segment

Target 2:

Code Segment

- A. Mastered  
B. Not Mastered

Answer: A

Explanation:

Target 1:

AuthorizeAttribute

Target 2:

HttpContext

NEW QUESTION 135

DRAG DROP

You are developing an Internet-based ASP.NET Web API application that manages pet data. You install an SSL certificate on the web server to encrypt calls to the API. You create a class named PetAuthorization, which inherits from a type named AuthorizeAttribute, and implements the OnAuthorization() method. You need to implement basic authentication for the API. What should you do? (To answer, drag the appropriate words to the correct targets in the answer area. Words may be used once, more than once, or not at all. You may need to drag the split bar between panes or scroll to view content)

Words

Forms

None

Windows

Authorize

PetAuthorization

SecurityPermission

WWW-Authenticate

Authorization

Proxy-Authenticate

Allow

Answer Area

Set the authentication mode in the web.config file to

Word

, then apply the

Word

attribute to the controller. Finally, add code to the AuthorizeAttribute to return a

Word

header in the case of a failed authentication.

- A. Mastered  
B. Not Mastered

Answer: A

Explanation:

Set the authentication mode in the web.config file to

None

, then apply the

PetAuthorization

attribute to the controller. Finally, add code to the AuthorizeAttribute to return a

WWW-Authenticate

header in the case of a failed authentication.

#### NEW QUESTION 139

You are developing an ASP.NET MVC application. The application is an order processing system that uses the ADO.NET Entity Framework against a SQL Server database. It has a controller that loads a page that displays customers. Customers are filtered on Country and, if provided, on CompanyName.

You have an Entity Framework context named db. The Customer class is shown below.

```
public partial class Customer
{
    ...
    public string CustomerID { get; set; }
    public string CompanyName { get; set; }
    public string ContactName { get; set; }
    public string Country { get; set; }
    ...
}
```

You need to execute a single deferred query to return the filtered list of customers. Which code segment should you use?



- ☐ A. 

```
public ActionResult Index(string country, string CompanyName)
{
    IEnumerable<Customer> customers;
    IQueryable<Customer> query = db.Customers.Where(c => c.Country == country);
    if (!string.IsNullOrEmpty(CompanyName))
    {
        customers = query.Where(c => c.CompanyName.ToLower().StartsWith(CompanyName.ToLower()));
    }
    return View(customers);
}
```
- ☐ B. 

```
public ActionResult Index(string country, string CompanyName)
{
    IEnumerable<Customer> customers;
    IEnumerable<Customer> query = db.Customers.Where(c => c.Country == country);
    if (!string.IsNullOrEmpty(CompanyName))
    {
        customers = query.Where(c => c.CompanyName.ToLower().StartsWith(CompanyName.ToLower()));
    }
    return View(customers);
}
```
- ☐ C. 

```
public ActionResult Index(string country, string CompanyName)
{
    IEnumerable<Customer> customers;
    IQueryable<Customer> query = db.Customers.Where(c => c.Country == country);
    query.Load();
    if (!string.IsNullOrEmpty(CompanyName))
    {
        customers = query.Where(c => c.CompanyName.ToLower().StartsWith(CompanyName.ToLower()));
    }
    return View(customers);
}
```
- ☐ D. 

```
public ActionResult Index(string country, string CompanyName)
{
    IEnumerable<Customer> customers;
    IQueryable<Customer> query = db.Customers;
    query.Load();
    query = query.Where(c => c.Country == country);
    if (!string.IsNullOrEmpty(CompanyName))
    {
        customers = query.Where(c => c.CompanyName.ToLower().StartsWith(CompanyName.ToLower()));
    }
    return View(customers);
}
```

- A. Option A  
B. Option B  
C. Option C  
D. Option D

Answer: C

#### NEW QUESTION 142

##### DRAG DROP

You are developing a self-hosted WCF service to display data about books. The solution contains a service named BookService that implements the IBookService interface.

You need to expose the metadata in the service host programmatically. You have the following code:

```
static void Main(string[] args)
{
    Target 1 host = new Target 2 (
        typeof(BookService), new Uri(ServiceUrl));
    host.AddServiceEndpoint(
        typeof(IBookService), new WSHttpBinding(), "");
    Target 3 behavior =
        new Target 4 ();
    behavior.HttpGetEnabled = Target 5 ;
    host.Description.Behaviors.Add(behavior);
    host.Open();
    ...
    host.Close();
}
```

Which code segments should you include in Target 1, Target 2, Target 3, Target 4 and Target 5 to build the service host? (To answer, drag the appropriate code segments to the correct targets in the answer area. Each code segment may be used once, more than once, or not at all. You may need to drag the split bar between panes or scroll to view content.)

**Code Segments**

true

false

ServiceMetadataBehavior

ClientViaBehavior

ServiceHost

**Answer Area**

Target 1: 

Code Segment

Target 2: 

Code Segment

Target 3: 

Code Segment

Target 4: 

Code Segment

Target 5: 

Code Segment

- A. Mastered
- B. Not Mastered

Answer: A

Explanation:

Target 1: 

ServiceHost

Target 2: 

ServiceHost

Target 3: 

ServiceMetadataBehavior

Target 4: 

ServiceMetadataBehavior

Target 5: 

true

NEW QUESTION 146

You are developing an ASP.NET MVC application. The application is a loan processing system that uses the ADO.NET Entity Framework against a SQL Server database. It has a controller that loads a page that displays all loans along with rate information. Lazy loading has been disabled. The Loan class is shown below.

```
public partial class Loan
{
    ...
    public string RateID { get; set; }
    ...
    public virtual Rate Rate { get; set; }
}
```

You need to return the loans and rate information in a single round trip to the database. Which code segment should you use?

- ☐ A. 

```
public ActionResult Index()
{
    IQueryable<Loan> loans = db.Loans;
    return View(loans.ToList());
}
```
- ☐ B. 

```
public ActionResult Index()
{
    IQueryable<Loan> loans = db.Loans;
    loans = loans.Include("Rate");
    return View(loans.ToList());
}
```
- ☐ C. 

```
public ActionResult Index()
{
    IQueryable<Loan> loans = db.Loans.Include("Loan.Rate");
    return View(loans.ToList());
}
```
- ☐ D. 

```
public ActionResult Index()
{
    IQueryable<Loan> loans = db.Loans;
    loans.Select(o => o.Rate).Load();
    return View(loans.ToList());
}
```

- A. Option A  
 B. Option B  
 C. Option C  
 D. Option D

Answer: B

#### NEW QUESTION 150

You are developing a library management application that uses the ADO.NET Entity Framework against a SQL Server database. The application has a method that returns check outs filtered by date.

The Book class is shown below.

```
public partial class Book
{
    ...
    public Nullable<System.DateTime> CheckoutDate { get; set; }
    ...
}
```

You must filter the data on the SQL server before it is returned to the application server. You need to return books checked out more recently than the entered date.

Which code segment should you use?

- ☐ A. 

```
IQueryable<Book> books = db.Books;
books = books.Where(b => b.CheckoutDate >= date);
```
- ☐ B. 

```
IEnumerable<Book> books = db.Books.ToList().AsQueryable();
books = books.Where(b => b.CheckoutDate >= date);
```
- ☐ C. 

```
IQueryable<Book> books = db.Books.ToList().AsQueryable();
books = books.Where(b => b.CheckoutDate >= date);
```
- ☐ D. 

```
IEnumerable<Book> books = db.Books;
books = books.Where(b => b.CheckoutDate >= date);
```

- A. Option A  
 B. Option B  
 C. Option C  
 D. Option D

Answer: A

#### Explanation:

The difference is that IQueryable<T> is the interface that allows LINQ-to-SQL (LINQ.-to-anything really) to work. So if you further refine your query on an IQueryable<T>, that query will be executed in the database, if possible.

For the IEnumerable<T> case, it will be LINQ-to-object, meaning that all objects matching the original query will have to be loaded into memory from the database.

#### NEW QUESTION 154

##### DRAG DROP

You are developing a web application by using Microsoft ASP.NET MVC. The application manages company employees and managers.

Each employee is assigned to a manager.

You need to write a LINQ query to retrieve the list of managers and their respective employees.

How should you complete the code? To answer, drag the appropriate keywords to the correct targets. Each keyword may be used once, more than once, or not at all. You may need to drag the split bar between panes or scroll to view content.



Methods	Answer area
<div> <div>equals</div> <div>from</div> <div>in</div> <div>join</div> <div>select</div> </div>	<pre>var query = from manager in managers               employee in employees               manager               employee.manager               new {ManagerName = manager.FirstName, EmployeeName = employee.Name};</pre>

- A. Mastered  
 B. Not Mastered

**Answer:** A

**Explanation:**

References: <https://docs.microsoft.com/en-us/dotnet/csharp/programming-guide/concepts/linq/basic-linq-query-operations>

**NEW QUESTION 157**

You create a web application.  
 You deploy the application by using a Web Deploy Package.  
 You need to identify which setting will be created automatically in the SetParameters.xml file during the package generation.  
 Which three settings should you identify? Each correct answer presents part of the solution.

- A. the connection strings in the Web.config file  
 B. the destination IIS web application path and name  
 C. the service endpoints of the Web.config file  
 D. the connection strings of any databases you add to the Package/Publish SQL tab on the Properties page of the project  
 E. the application settings of the Web.config file

**Answer:** ABD

**Explanation:**

References: <https://docs.microsoft.com/en-us/aspnet/web-forms/overview/deployment/web-deployment-in-the-enterprise/configuring-parameters-for-web-package-deployment>

**NEW QUESTION 162**

You have a Microsoft Visual Studio project named Project1 that is deployed as an Azure web app. The Azure web app uses an Azure SQL Database.  
 You plan to deploy updates to the Azure web app by using a Web Deploy Package.  
 The password for the Azure SQL Database was changed since you first published the Azure web app.  
 You need to deploy the package by using Windows PowerShell.  
 Which file should you modify before running the PowerShell deployment script?

- A. WebApiConfig.cs from the App\_Start folder  
 B. IdentityConfig.cs from the App\_Start folder  
 C. App.config from the Web Application folder  
 D. Project1-waws-dev.json from the Configurations folder

**Answer:** A

**NEW QUESTION 163**

**DRAG DROP**

You are developing a web application that uses the Entity Framework.  
 You plan to use the table-per-type mapping strategy to store the following data.

```
public class Product
{
    public int ProductId { get; set; }
    public string Name { get; set; }
    public decimal UnitPrice { get; set; }
}
public class DiscontinuedProduct : Product
{
    public DateTime DiscontinuedDate { get; set; }
}
```

You need to implement a mapping strategy that will store the data.  
 How should you complete the code? To answer, drag the appropriate methods to the correct locations. Each method may be used once, more than once, or not at all. You may need to drag the split bar between panes or scroll to view content.

Methods

MapHierarchy

modelBuilder

OnInit

OnModelCreating

ToList

ToTable

Answer area

```
protected override void Method (DbModelBuilder modelBuilder)
{
    Method .Entity<Product>()
    . Method ("dbo.Products");
    Method .Entity<DiscontinuedProduct>()
    . Method ("dbo.DiscontinuedProducts");
}
```

- A. Mastered
- B. Not Mastered

Answer: A

Explanation:

References:

<https://msdn.microsoft.com/en-us/library/system.data.entity.dbcontext.onmodelcreating%28v=vs.113%29.aspx>

[https://msdn.microsoft.com/en-us/library/jj591617\(v=vs.113\).aspx#Model Used in Samples](https://msdn.microsoft.com/en-us/library/jj591617(v=vs.113).aspx#Model%20Used%20in%20Samples)

NEW QUESTION 168

HOTSPOT

You have a Windows Communication Foundation (WCF) service named Service1.

You deploy the WCF service at the root level of a website in Azure. The address of the Azure website is <http://service1.azurewebsites.net/>.

You need to generate a .cs file that can be used to interact with Service1.

What command should you run? To answer, select the appropriate options in the answer area.

Answer Area

regasm.exe

sn.exe

svcutil.exe

<http://service1.azurewebsites.net/>

<svc://service1.azurewebsites.net/>

<tcp://service1.azurewebsites.net/>

service1.asmx

service1.svc

service1.wsdl

- A. Mastered
- B. Not Mastered

Answer: A

Explanation:

References: [https://stackoverflow.com/questions/23997821/how-to-generate-wcf-service- with-svcutil-exe](https://stackoverflow.com/questions/23997821/how-to-generate-wcf-service-with-svcutil-exe)

NEW QUESTION 173

You have a Web.config file that contains the following markup.

```
<?xml version="1.0"?>
<configuration>
  <appSettings>
    <add key="Key1" value="Value1" />
    <add key="Key2" value="Value2" />
    <add key="Key3" value="Value3" />
  </appSettings>
</configuration>
```

You need to use an XSLT transformation to remove the add tag for Key3. Which markup should you use?

- A. <add key="Key3" xdt: Transform="Remove" />
- B. <add key="Key3" xdt:Transform="Remove" xdt:Locator="Match(/configuration/appSettings/add[@key='Key3'])"/>
- C. <add xdt:Transform="Remove" />
- D. <add key="Key3" xdt:Transform="Remove" xdt:Locator="Match(key)" />

Answer: D

Explanation:

References: https://msdn.microsoft.com/en-us/library/dd465326(v=vs.110).aspx

NEW QUESTION 176

DRAG DROP

You are developing a web application that uses an assembly named MyAssembly. You need to ensure that when MyAssembly version 1.0.0.0 is requested, version 2.0.0.0 is used. How should you complete the markup in the Web.config file? To answer, drag the appropriate elements to the correct locations. Each element may be used once, more than once, or not at all. You may need to drag the split bar between panes or scroll to view content. NOTE: Each correct selection is worth one point.

assemblyBinding

bindingRedirect

name

oldVersion

handlers

newVersion

type

<configuration>

<runtime>

< Element <xmlns="urn:schemas-microsoft-com:asm.v1">

<dependentAssembly>

<assemblyIdentity name= "myAssembly" publicKeyToken= "32ab4ba45e0a69a1" culture= "neutral" />

< Element Element = "1.0.0.0" Element = "2.0.0.0"/>

</dependentAssembly>

</ Element >

</runtime>

</configuration>

- A. Mastered
- B. Not Mastered

Answer: A

Explanation:

Box 1: assemblyBinding

Box 2: bindingRedirect

To redirect one assembly version to another, use the <bindingRedirect> element. Box 3: OldVersion

Box 4: NewVersion

The newVersion attribute should specify a single version. For example, <bindingRedirect oldVersion="1.1.0.0-1.2.0.0" newVersion="2.0.0.0"/> specifies that the runtime should use version 2.0.0.0 instead of the assembly versions between 1.1.0.0 and 1.2.0.0.

Box 5: assemblyBinding

The following code example demonstrates a variety of binding redirect scenarios. The example specifies a redirect for a range of versions for myAssembly, and a single binding redirect for mySecondAssembly.

```
<configuration>
<runtime>
<assemblyBinding xmlns="urn:schemas-microsoft-com:asm.v1">
<dependentAssembly>
<assemblyIdentity name="mySecondAssembly" publicKeyToken="32ab4ba45e0a69a1" culture="en-us" />
<bindingRedirect oldVersion="1.0.0.0" newVersion="2.0.0.0" />
</dependentAssembly>
</assemblyBinding>
</runtime>
</configuration>
```

References: https://docs.microsoft.com/en-us/dotnet/framework/configure-apps/redirect-assembly-versions

NEW QUESTION 177

DRAG DROP

You are developing the following applications. All applications will be hosted in Azure and data will be stored using Azure storage.



Application	Description and requirements
Logging	Store log files from various systems. Logs must not be deleted or changed and must be stored for a defined period of time
VM Manager	Store various virtual machine images in VHD format. The images support virtual machines with various operating systems.
Accounting	Store large Microsoft Excel workbooks.

All data must be stored using the binary large object (blob) hot storage tier. You need to select the blob storage type for each application. Which blob storage types should you use? To answer, drag the appropriate blob types to the correct applications. Each blob type may be used once, more than once, or not at all. You may need to drag the split bar between panes or scroll to view content.  
 NOTE: Each correct selection is worth one point.

## Storage types

block blob

append blob

page blob

## Answer Area

Application

Blob Type

Logging

Storage type

VM Manager

Storage type

Accounting

Storage type

- A. Mastered
- B. Not Mastered

**Answer:** A

### Explanation:

Box 1 Logging: append blob

An append blob is comprised of blocks and is optimized for append operations. When you modify an append blob, blocks are added to the end of the blob only, via the Append Block operation.

Box 2 VM Manager: block blob

Block blobs let you upload large blobs efficiently. Box 3: Accounting: page blob

Page blobs are a collection of 512-byte pages optimized for random read and write operations.

References: <https://docs.microsoft.com/en-us/rest/api/storageservices/understanding-block-blobs--append-blobs--and-page-blobs>

### NEW QUESTION 182

#### HOTSPOT

You are creating an application that retrieves Microsoft SQL Server data from two tables named Product and ProductModel.

You need to store in two separate lists all the names of the products and the product models for later use by the application.

How should you complete the code? To answer, select the appropriate options in the answer area.

NOTE: Each correct selection is worth one point.

## Answer Area

```

List<string>productNames = new List<string>();
List<string> productModelNames = new List<string> ();

using (SqlConnection connection = new SqlConnection
(connectionString))
{
    connection.Open();
    string sql =
        "SELECT" FROM Product; SELECT" FROM ProductModel";
        "SELECT" FROM PRODUCT UNION SELECT" FROM ProductModel";
        "SELECT" FROM Product UNION ALL SELECT" FROM ProductModel";

    SqlCommand command = new SqlCommand(sql, connection);
    using (SqlDataReader reader = command.ExecuteReader())
    {
        while
            (reader.HasRows)
            (reader.NextResult())
            (reader.Read())
        {
            productNames.Add(reader [1].ToString());
        }

        reader.GetOrdinal("ProductModel");
        reader.NextResult();
        reader.Read();

        while
            (reader.HasRows)
            (reader.NextResult())
            (reader.Read())
        {
            productModelNames.Add(reader[1].ToString());
        }
    }
}

```

- A. Mastered
- B. Not Mastered

**Answer:** A

### Explanation:

Box 1:

Two Select statements to get two results. Box 2: (Reader.Read());

The SqlDataReader.Read Method advances the SqlDataReader to the next record. The default position of the SqlDataReader is before the first record. Therefore, you must call Read to begin accessing any data.

Return Value

Type: System.Boolean

true if there are more rows; otherwise false. Box 3: Reader.NextResult();

The SqlDataReader.NextResult method advances the data reader to the next result, when reading the results of batch Transact-SQL statements. Used to process multiple results, which can be generated by executing batch Transact-SQL statements.

By default, the data reader is positioned on the first result. Box 4: (Reader.Read());

References: [https://msdn.microsoft.com/en-us/library/system.data.sqlclient.sqldatareader.nextresult\(v=vs.110\).aspx](https://msdn.microsoft.com/en-us/library/system.data.sqlclient.sqldatareader.nextresult(v=vs.110).aspx)

### NEW QUESTION 186

DRAG DROP

You are developing an ASP.NET Core MVC web application. The application will use Entity Framework Core and a SQLite database. You rename a property in the Customer data model. You attempt to apply the migration to the SQLite database and receive a NotSupportedException error that includes a table named Customer. You need to resolve the migration error. Which four actions should you perform in sequence? To answer, move the appropriate actions from the list of actions to the answer area and arrange them in the correct order.

Actions	Answer Area
Create an index on the existing Customer table.	
Drop the index on the new Customer table.	
Drop the existing Customer table.	
Copy data from the existing Customer table to a new Customer table.	
Create a new Customer table.	
Rename the existing Customer table.	

⬅
➡
⬆
⬇

- A. Mastered
- B. Not Mastered

**Answer:** A

**Explanation:**

The SQLite provider has a number of migrations limitations. You can workaround some of these limitations by manually writing code in your migrations to perform a table rebuild. A table rebuild involves renaming the existing table, creating a new table, copying data to the new table, and dropping the old table. References: <https://docs.microsoft.com/en-us/ef/core/providers/sqlite/limitations>

**NEW QUESTION 190**

**DRAG DROP**

You are developing a web application that uses the Entity Framework. You plan to use the table-per-type mapping strategy to store the following data.

```
public class Product
{
    public int ProductId {get; set;}
    public string Name {get; set;}
    public decimal UnitPrice {get; set;}
}
public class DiscontinuedProduct : Product
{
    public DateTime DiscontinuedDate {get; set;}
}
```

You need to implement a mapping strategy that will store the data. How should you complete the code? To answer, drag the appropriate methods to the correct locations. Each method may be used once, more than once, or not at all. You may need to drag the split bar between panes or scroll to view content. NOTE: Each correct selection is worth one point.



Methods	Answer Area
Entity	protected override void Method (DbModelBuilder modelBuilder)
OnModelCreating	{
MapHierarchy	modelBuilder. Method <Product>()
ToList	. Method ("dbo.Products");
OnInit	modelBuilder. Method <DiscontinuedProduct>()
ToTable	. Method ("dbo. DiscontinuedProducts");
	}

- A. Mastered  
B. Not Mastered

**Answer:** A

**Explanation:**

Box 1: OnModelCreating

Box 2: Entity

Box 3: ToTable

Mapping an Entity Type to a Specific Table in the Database Example:

All properties of Department will be mapped to columns in a table called t\_ Department. modelBuilder.Entity<Department>()

ToTable("t\_Department"); Box 4: Entity

Box 5: ToTable

Mapping the Table-Per-Type (TPT) Inheritance

In the TPT mapping scenario, all types are mapped to individual tables. Properties that belong solely to a base type or derived type are stored in a table that maps to that type. Tables that map to derived types also store a foreign key that joins the derived table with the base table.

modelBuilder.Entity<Course>().ToTable("Course"); modelBuilder.Entity<OnsiteCourse>().ToTable("OnsiteCourse");

References: [https://msdn.microsoft.com/en-us/library/jj591617\(v=vs.113\).aspx](https://msdn.microsoft.com/en-us/library/jj591617(v=vs.113).aspx)

**NEW QUESTION 192**

Note: This question is part of a series of questions that present the same scenario. Each question in the series contains a unique solution that might meet the stated goals. Some question sets might have more than one correct solution, while others might not have a correct solution.

After you answer a question in this section, you will NOT be able to return to it. As a result, these questions will not appear in the review screen.

You have a web application in a Docker container image. You set the tag for the image as myApp. You plan to deploy the application to Azure Container Services.

You run the following commands. All commands complete successfully.

```
az acr create --resource-group myResourceGroup --name myRegistry --sku Basic
az acr login --name myRegistry
```

You need to ensure that the image can be run on an Azure Container Service cluster.

Solution: You run the following commands:

```
docker tag myapp myregistry.azurecr.io/samples/myapp
docker pull myregistry.azurecr.io/samples/myapp
```

Does the solution meet the goal?

- A. Yes  
B. No

**Answer:** B

**Explanation:**

You need to push the image into your private registry, not pull it.

References: <https://medium.com/@pjbfg/azure-kubernetes-service-aks-pulling-private-container-images-from-azure-container-registry-acr-9c3e0a0a13f2>

**NEW QUESTION 197**

Note: This question is part of a series of questions that present the same scenario. Each question in the series contains a unique solution that might meet the stated goals. Some question sets might have more than one correct solution, while others might not have a correct solution.

After you answer a question in this section, you will NOT be able to return to it. As a result, these questions will not appear in the review screen.

You have a web application in a Docker container image. You set the tag for the image as myApp. You plan to deploy the application to Azure Container Services.

You run the following commands. All commands complete successfully.

```
az acr create --resource-group myResourceGroup --name myRegistry --sku Basic
az acr login --name myRegistry
```

You need to ensure that the image can be run on an Azure Container Service cluster.

Solution: You run the following commands:

```
docker run -d -p 5000:80 myregistry.azurecr.io/samples/myapp
docker push myregistry.azurecr.io/samples/myapp
```

Does the solution meet the goal?

- A. Yes
- B. No

**Answer: B**

**Explanation:**

First tag the image, and the push it into your private registry.

References: <https://medium.com/@pjbfg/azure-kubernetes-service-aks-pulling-private-container-images-from-azure-container-registry-acr-9c3e0a0a13f2>

**NEW QUESTION 198**

Note: This question is part of a series of questions that present the same scenario. Each question in the series contains a unique solution that might meet the stated goals. Some question sets might have more than one correct solution, while others might not have a correct solution.

After you answer a question in this section, you will NOT be able to return to it. As a result, these questions will not appear in the review screen.

You develop a REST API that uses Node.js. The API will store data in Azure Cosmos DB. You plan to deploy the API to a new Azure App Services Web App. You create a new Web App by using the Azure portal.

The API must be deployed by using SFTP.

You need to provide the proper deployment credentials to deploy the API.

Solution: Download the. PublishSettings file and enter the username and password located in the file.

Does the solution meet the goal?

- A. Yes
- B. No

**Answer: A**

**Explanation:**

Example:

# Get FTP publishing profile and query for publish URL and credentials

```
creds=$(az webapp deployment list-publishing-profiles --name $webappname --resource-group myResourceGroup \
--query "[?contains(publishMethod, 'FTP')].publishUrl,userName,userPWD]" --output tsv) -- query "[?contains(publishMethod,
'FTP')].publishUrl,userName,userPWD]" --output tsv)
```

References: <https://docs.microsoft.com/en-us/azure/app-service/scripts/app-service-cli-deploy-ftp>

**NEW QUESTION 201**

Note: This question is part of a series of questions that present the same scenario. Each question in the series contains a unique solution that might meet the stated goals. Some question sets might have more than one correct solution, while others might not have a correct solution.

After you answer a question in this section, you will NOT be able to return to it. As a result, these questions will not appear in the review screen.

You develop a REST API that uses Node.js. The API will store data in Azure Cosmos DB. You plan to deploy the API to a new Azure App Services Web App. You create a new Web App by using the Azure portal.

The API must be deployed by using SFTP.

You need to provide the proper deployment credentials to deploy the API. Solution: Use your assigned Azure Active Directory (Azure AD) credentials. Does the solution meet the goal?

- A. Yes
- B. No

**Answer: B**

**Explanation:**

Get FTP publishing profile and query for publish URL and credentials.

References: <https://docs.microsoft.com/en-us/azure/app-service/scripts/app-service-cli-deploy-ftp>

**NEW QUESTION 206**

Note: This question is part of a series of questions that present the same scenario. Each question in the series contains a unique solution that might meet the stated goals. Some question sets might have more than one correct solution, while others might not have a correct solution.

After you answer a question in this section, you will NOT be able to return to it. As a result, these questions will not appear in the review screen.

You deploy an ASP.NET Core web application to Azure App Services. You are using Azure Event Hubs to collect the telemetry data for the application.

You need to configure Event Hubs to automatically deliver the telemetry data stream to a persistent data store.

Solution: Configure Event Hubs Capture to deliver data to Azure Blob storage. Does the solution meet the goal?

- A. Yes
- B. No

**Answer: A**

**Explanation:**

Azure Event Hubs Capture enables you to automatically deliver the streaming data in Event Hubs to an Azure Blob storage or Azure Data Lake Store account of your choice, with the added flexibility of specifying a time or size interval.

References: <https://docs.microsoft.com/en-us/azure/event-hubs/event-hubs-capture-overview>

**NEW QUESTION 207**

Note: This question is part of a series of questions that present the same scenario. Each question in the series contains a unique solution that might meet the stated goals. Some question sets might have more than one correct solution, while others might not have a correct solution.

After you answer a question in this section, you will NOT be able to return to it. As a result, these questions will not appear in the review screen.  
You deploy an ASP.NET Core web application to Azure App Services. You are using Azure Event Hubs to collect the telemetry data for the application.  
You need to configure Event Hubs to automatically deliver the telemetry data stream to a persistent data store.  
Solution: Configure Azure Event Hubs Capture to deliver data to Azure File Service. Does the solution meet the goal?

- A. Yes  
B. No

**Answer:** B

**Explanation:**

Use Azure Blob storage to store the telemetry data.

References: <https://docs.microsoft.com/en-us/azure/event-hubs/event-hubs-capture-overview>

**NEW QUESTION 210**

HOTSPOT

You are creating a streamed Windows Communication Foundation (WCF) service. You implement the following service methods.

```
[ServiceContract]
public interface IEmployee
{
    [OperationContract]
    Stream EmployeeMethod1(string string1);

    [OperationContract]
    bool EmployeeMethod2(Message msg1);

    [OperationContract]
    IXmlSerializable EmployeeMethod3(Stream stream1, string string1);

    [OperationContract]
    int EmployeeMethod4(bool bool1, Message msg1);
}
```

For each of the following statements, select Yes if the statement is true. Otherwise, select No.

## Answer Area

Statement	Yes	No
The input for EmployeeMethod3 is streamed.	<input type="radio"/>	<input type="radio"/>
The output for EmployeeMethod3 is streamed.	<input type="radio"/>	<input type="radio"/>
The input for EmployeeMethod4 is streamed.	<input type="radio"/>	<input type="radio"/>
The output for EmployeeMethod4 is streamed.	<input type="radio"/>	<input type="radio"/>

- A. Mastered  
B. Not Mastered

**Answer:** A

**Explanation:**

To enable streaming, define the OperationContract appropriately and enable streaming at the transport level.

To stream data, the OperationContract for the service must satisfy two requirements:

References: <https://docs.microsoft.com/en-us/dotnet/framework/wcf/feature-details/how-to-enable-streaming>

**NEW QUESTION 215**

.....



## THANKS FOR TRYING THE DEMO OF OUR PRODUCT

Visit Our Site to Purchase the Full Set of Actual 70-487 Exam Questions With Answers.

We Also Provide Practice Exam Software That Simulates Real Exam Environment And Has Many Self-Assessment Features. Order the 70-487 Product From:

<https://www.2passeasy.com/dumps/70-487/>

## Money Back Guarantee

### 70-487 Practice Exam Features:

- \* 70-487 Questions and Answers Updated Frequently
- \* 70-487 Practice Questions Verified by Expert Senior Certified Staff
- \* 70-487 Most Realistic Questions that Guarantee you a Pass on Your FirstTry
- \* 70-487 Practice Test Questions in Multiple Choice Formats and Updatesfor 1 Year