



Microsoft

Exam Questions 98-361

Microsoft MTA Software Development Fundamentals

NEW QUESTION 1

- (Topic 1)

The elements of an array must be accessed by:

- A. Calling the item that was most recently inserted into the array.
- B. Calling the last item in the memory array.
- C. Using an integer index.
- D. Using a first-in, last-out (FILO) process.

Answer: C

NEW QUESTION 2

- (Topic 1)

You have a website that includes a form for username and password.

You need to ensure that users enter their username and password. The validation must work in all browsers.

Where should you put the validation control?

- A. in both the client-side code and the server-side code
- B. in the client-side code only
- C. in the Web.config file
- D. in the server-side code only

Answer: A

Explanation:

From version 2.0 on, ASP.NET recognized the JavaScript capabilities of these browsers, so client-side validation is now available to all modern browsers, including Opera, Firefox, and others. Support is even better now in ASP.NET 4.0. That said, it's important not to forget that JavaScript can be disabled in any browser, so client-side validation cannot be relied upon—we must always validate any submitted data on the server.

NEW QUESTION 3

- (Topic 1)

The following functions are defined:

```
private static int Printer(int j)
{
    for (var i = j; i > 0; i = Printer(i - 1))
    {
        Console.Write(i);
    }
    return j;
}
```

What does the console display after the following line? Printer(2);

- A. 210
- B. 211
- C. 2101
- D. 2121

Answer: B

NEW QUESTION 4

- (Topic 1)

You have a SQL Server database named MyDB that uses SQL Server Authentication. Which connection string should you use to connect to MyDB?

- A. Data Source=MyDB; UserID=username; Password=P@sswOrd; Initial Catalog=Sales
- B. Data Source=MyDB; Integrated Security=SSPI; Initial Catalog=Sales
- C. Data Source=MyDB; Integrated Security=True; Initial Catalog=Sales
- D. Data Source=MyDB; Trusted_Connection=True; MultipleActiveResultSets=True; Initial Catalog=Sales

Answer: A

Explanation:

Integrated Security Integrated Security is by default set to false.

When false, User ID and Password are specified in the connection.

Incorrect:

not C: Windows Authentication (Integrated Security = true) remains the most secure way to log in to a SQL Server database.

NEW QUESTION 5

- (Topic 1)

How should you configure an application to consume a Web service?

- A. Add the Web service to the development computer.
- B. Add a reference to the Web service in the application.
- C. Add a reference to the application in the Web service.
- D. Add the Web service code to the application.

Answer: B

Explanation:

Start by adding a Service Reference to the project. Right-click the ConsoleApplication1 project and choose ??Add Service Reference??:

NEW QUESTION 6

- (Topic 1)

You execute the following code.

```
bool beakerFull = true;
bool flameOn = false;
int iResult;

switch (beakerFull)
{
    case true:
        switch (flameOn)
        {
            case true:
                iResult = 1;
                break;
            case false:
                iResult = 2;
                break;
        }
        break;
    case false:
        switch (flameOn)
        {
            case false:
                iResult = 3;
                break;
            case true:
                iResult = 4;
                break;
        }
        break;
}
```

What will the variable result be?

- A. 1
- B. 2
- C. 3
- D. 4

Answer: B

NEW QUESTION 7

- (Topic 1)

What are the three basic states that a Windows service can be in? (Choose three.)

- A. halted
- B. running
- C. stopped
- D. paused
- E. starting

Answer: BCD

Explanation:

A service can exist in one of three basic states: Running, Paused, or Stopped.

NEW QUESTION 8

- (Topic 1)

Which three items are benefits of encapsulation? (Choose three.)

- A. maintainability
- B. flexibility
- C. restricted access
- D. inheritance
- E. performance

Answer: ABC

Explanation:

Encapsulation is the packing of data and functions into a single component.

In programming languages, encapsulation is used to refer to one of two related but distinct notions, and sometimes to the combination thereof:

* A language mechanism for restricting access to some of the object's components.

* A language construct that facilitates the bundling of data with the methods (or other functions) operating on that data.

Incorrect:

not D: Encapsulation is one of the four fundamental OOP concepts. The other three are inheritance, polymorphism, and abstraction.

NEW QUESTION 9

- (Topic 1)

Your database administrators will not allow you to write SQL code in your application. How should you retrieve data in your application?

- A. Script a SELECT statement to a file.
- B. Query a database view.
- C. Call a stored procedure.
- D. Reference an index in the database.

Answer: C

Explanation:

The SQL will only be inside the stored procedure.

NEW QUESTION 10

- (Topic 1)

What are two methods that can be used to evaluate the condition of a loop at the start of each iteration? (Each correct answer presents a complete solution. Choose two.)

- A. If
- B. D
- C. . . While
- D. For
- E. While

Answer: CD

Explanation:

For and While constructs check at the start of each iteration.

NEW QUESTION 10

- (Topic 1)

You are creating an application that presents the user with a Windows Form. You need to configure the application to display a message box to confirm that the user wants to close the form.

Which event should you handle?

- A. Deactivate
- B. Leave
- C. FormClosed
- D. FormClosing

Answer: D

Explanation:

The Closing event occurs as the form is being closed.

NEW QUESTION 15

- (Topic 1)

You need to create an application that processes data on a last-in, first-out (LIFO) basis. Which data structure should you use?

- A. Queue
- B. Tree
- C. Stack
- D. Array

Answer: C

Explanation:

A stack implements LIFO.

NEW QUESTION 16

- (Topic 1)

You are designing a Windows Store application.

You need to design the application so that users can share content by connecting two or more devices by physically tapping the devices together.

Which user experience (UX) guideline for Windows Store applications should you use?

- A. Share and data exchange

- B. location-awareness
- C. device-awareness
- D. proximity gestures

Answer: A

NEW QUESTION 17

- (Topic 1)
Which two types of information should you include in an effective test case? (Choose two.)

- A. the expected result from testing the case
- B. multiple actions combined as a single step to test the case
- C. any pre-conditions necessary to test the case
- D. the stakeholders who originated the test case

Answer: AB

Explanation:

You can create manual test cases using Microsoft Test Manager that have both action and validation test steps. You can also share a set of common test steps between multiple test cases called shared steps. This simplifies maintenance of test steps if your application under test changes.

NEW QUESTION 19

DRAG DROP - (Topic 1)
You are developing an application to display track and field race results. The application must display the race results twice. The first time it must display only the winner and runner-up. The second time it must display all participants. The code used to display results is shown below.

```
public void Display()
{
    // display top two
    foreach (var ranking in Rankings(true))
    {

        DisplayName(ranking);
    }

    // display all
    foreach (var ranking in Rankings(false))
    {
        DisplayName(ranking);
    }
}
```

You need to implement the Rankings() function.
Complete the function to meet the requirements. {To answer, drag the appropriate code segment from the column on the left to its location on the right. Each code segment may be used once, more than once, or not at all. Each correct match is worth one point.)

Code Segments	Answer Area
<div>break</div>	<pre>private IEnumerable<string> Rankings(bool top20Only) {</pre>
<div>return</div>	<div>Code Segment"John";</div>
<div>yield break</div>	<div>Code Segment"Nancy";</div>
<div>yield return</div>	<pre> if (top20Only)</pre>
	<div>Code Segment;</div>
	<div>Code Segment"Chris";</div>
	<pre>}</pre>

- A. Mastered
- B. Not Mastered

Answer: A

Explanation:

Code Segments

break

return

yield break

yield return

Answer Area

```
private IEnumerable<string> Rankings(bool top20Only)
{
    yield return "John";
    yield return "Nancy";

    if (top20Only)
    {
        yield break;
        yield return "Chris";
    }
}
```

NEW QUESTION 20

- (Topic 1)
The throw keyword is used to perform which two actions? (Choose two.)

- A. stop processing of the code
- B. move error handling to a separate thread
- C. raise exceptions
- D. re-throw exceptions as a different type

Answer: CD

Explanation:

* The Throw statement throws an exception that you can handle with structured exception-handling code (Try...Catch...Finally) or unstructured exception- handling code (On Error GoTo). You can use the Throw statement to trap errors within your code because Visual Basic moves up the call stack until it finds the appropriate exception- handling code.
* This example throws an ApplicationException exception. Throw New ApplicationException

NEW QUESTION 24

HOTSPOT - (Topic 1)
For each of the following statements, select Yes if the statement is true. Otherwise, select No. Each correct selection is worth one point.

Description of Behavior	Yes	No
A queue’s items are stored in the order they were added.	<input type="radio"/>	<input type="radio"/>
A queue is a first in, first out (FIFO) data structure.	<input type="radio"/>	<input type="radio"/>
A queue has a limited number of items.	<input type="radio"/>	<input type="radio"/>

- A. Mastered
- B. Not Mastered

Answer: A

Explanation:

Answer Area

Description of Behavior	Yes	No
A queue's items are stored in the order they were added.	<input checked="" type="radio"/>	<input type="radio"/>
A queue is a first in, first out (FIFO) data structure.	<input checked="" type="radio"/>	<input type="radio"/>
A queue has a limited number of items.	<input type="radio"/>	<input checked="" type="radio"/>

NEW QUESTION 27

- (Topic 1)

You have a stack that contains integer values. The values are pushed onto the stack in the following order: 2,4,6,8.

The following sequence of operations is executed:

Pop Push 3 Pop Push 4

Push 6

Push 7 Pop Pop Pop

What is the value of the top element after these operations are executed?

- A. 2
- B. 3
- C. 6
- D. 7

Answer: B

NEW QUESTION 30

- (Topic 1)

This question requires that you evaluate the underlined text to determine if it is correct.

The process of transforming compiled C# code into an XML string for a web service is known as deserialization.

Select the correct answer if the underlined text does not make the statement correct. Select "No change is needed" if the underlined text makes the statement correct.

- A. No change is needed
- B. serialization
- C. decoding
- D. encoding

Answer: B

Explanation:

Serialization is the process of converting an object into a stream of bytes in order to store the object or transmit it to memory, a database, or a file. Its main purpose is to save the state of an object in order to be able to recreate it when needed.

Serialization allows the developer to save the state of an object and recreate it as needed, providing storage of objects as well as data exchange. Through serialization, a developer can perform actions like sending the object to a remote application by means of a Web

Service, passing an object from one domain to another, passing an object through a firewall as an XML string, or maintaining security or user-specific information across applications.

NEW QUESTION 34

- (Topic 1)

You plan to create an application for your company. The application will run automated routines and write the results to a text-based log file. Little or no user interaction is required.

Security requirements on the host computers prevent you from running applications on startup, and users must be able to see the status easily on the screen. The host computers also have limited memory and monitors that display only two colors. These computers will have no network connectivity.

Which type of application should you use for this environment?

- A. Directx
- B. Windows Service
- C. console-based
- D. Windows Store app

Answer: C

Explanation:

Building Console Applications

Applications in the .NET Framework can use the System.Console class to read characters from and write characters to the console. Data from the console is read from the standard input stream, data to the console is written to the standard output stream, and error data to the console is written to the standard error output stream.

NEW QUESTION 36

- (Topic 1)
You need to group all the style settings into a separate file that can be applied to all the pages in a Web application.
What should you do?

- A. Use a Cascading Style Sheet (CSS).
- B. Use inline styles.
- C. Use an Extensible Markup Language (XML) schema.
- D. Use a WebKit.

Answer: A

Explanation:

Cascading Style Sheets (CSS) is a style sheet language used for describing the look and formatting of a document written in a markup language. CSS is designed primarily to enable the separation of document content from document presentation, including elements such as the layout, colors, and fonts.

NEW QUESTION 39

- (Topic 1)
You execute the following code.

```
for(int i = 0; i <= 100; i++)
{
    if (i % 2 != 0)
    {
        Console.WriteLine("Hello")
    }
}
```

How many times will the word Hello be printed?

- A. 49
- B. 50
- C. 51
- D. 100

Answer: B

Explanation:

The % operator computes the remainder after dividing its first operand by its second. All numeric types have predefined remainder operators. In this case the reminder will be nonzero 50 times (for i with values 1, 3, 5,...,99).

NEW QUESTION 42

HOTSPOT - (Topic 1)
For each of the following statements, select Yes if the statement is true. Otherwise, select No. Each correct selection is worth one point.

Answer Area

Description of Behavior	Yes	No
An entity relationship diagram (ERD) is designed for an object-oriented database.	<input type="radio"/>	<input type="radio"/>
An entity relationship diagram (ERD) contains entities, relationships, and attributes.	<input type="radio"/>	<input type="radio"/>
Cardinality refers to how one table is linked to another table; as one-to-many.	<input type="radio"/>	<input type="radio"/>

- A. Mastered
- B. Not Mastered

Answer: A

Explanation:

Answer Area

Description of Behavior	Yes	No
An entity relationship diagram (ERD) is designed for an object-oriented database.	<input type="radio"/>	<input checked="" type="radio"/>
An entity relationship diagram (ERD) contains entities, relationships, and attributes.	<input checked="" type="radio"/>	<input type="radio"/>
Cardinality refers to how one table is linked to another table; as one-to-many.	<input checked="" type="radio"/>	<input type="radio"/>

NEW QUESTION 43

- (Topic 1)

You are creating an application that accepts input and displays a response to the user. You cannot create a graphical interface for this application. Which type of application should you create?

- A. Windows Forms
- B. Windows Service
- C. Web-based
- D. Console-based

Answer: C

NEW QUESTION 46

- (Topic 1)

How many parameters can a default constructor have?

- A. 1
- B. 2
- C. 3 or more

Answer: A

Explanation:

If a class contains no instance constructor declarations, a default instance constructor is automatically provided. That default constructor simply invokes the parameterless constructor of the direct base class.

NEW QUESTION 48

- (Topic 1)

This question requires that you evaluate the underlined text to determine if it is correct.

When a base class declares a method as virtual, the method is hidden from implementation by a derived class.

Select the correct answer if the underlined text does not make the statement correct. Select "No change is needed" if the underlined text makes the statement correct.

- A. No change is needed
- B. can be overridden with its own implementation by a derived class
- C. must be overridden in any non-abstract class that directly inherits from that class
- D. cannot be overridden with its own implementation by a derived class

Answer: B

Explanation:

The implementation of a non-virtual method is invariant: The implementation is the same whether the method is invoked on an instance of the class in which it is declared or an instance of a derived class. In contrast, the implementation of a virtual method can be superseded by derived classes. The process of superseding the implementation of an inherited virtual method is known as overriding that method.

NEW QUESTION 52

- (Topic 1)

Class C and Class D inherit from Class B. Class B inherits from Class A. The classes have the methods shown in the following table.

Class	Method
A	m1
B	m2
C	m3
D	m4

All methods have a protected scope.

Which methods does Class C have access to?

- A. only m3, m4
- B. only m2, m3
- C. only m1, m3
- D. m1, m3, m3
- E. m2, m3, m4
- F. m1, m2, m3

Answer: F

NEW QUESTION 57

- (Topic 1)

This question requires that you evaluate the underlined text to determine if it is correct. Arguments are passed to console applications as a Hashtable object.

Select the correct answer if the underlined text does not make the statement correct. Select "No change is needed" if the underlined text makes the statement correct.

- A. No change is needed

- B. String Array
- C. StoredProcedureCollection
- D. Dictionary

Answer: B

Explanation:

Arguments are passed to console applications as a String Array object.

NEW QUESTION 62

- (Topic 1)

Two classes named Circle and Square inherit from the Shape class. Circle and Square both inherit Area from the Shape class, but each computes Area differently. Which term is used to describe this object-oriented concept?

- A. polymorphism
- B. encapsulation
- C. superclassing
- D. overloading

Answer: A

Explanation:

You can use polymorphism to in two basic steps:

Create a class hierarchy in which each specific shape class derives from a common base class.

Use a virtual method to invoke the appropriate method on any derived class through a single call to the base class method.

NEW QUESTION 63

- (Topic 1)

What is displayed when you attempt to access a Web service by using a Web browser?

- A. a listing of methods that are available in the Web service
- B. a directory listing of the Web service's application structure
- C. an error page explaining that you have accessed the Web service incorrectly
- D. a visual depiction of your preliminary connection to the Web service

Answer: A

Explanation:

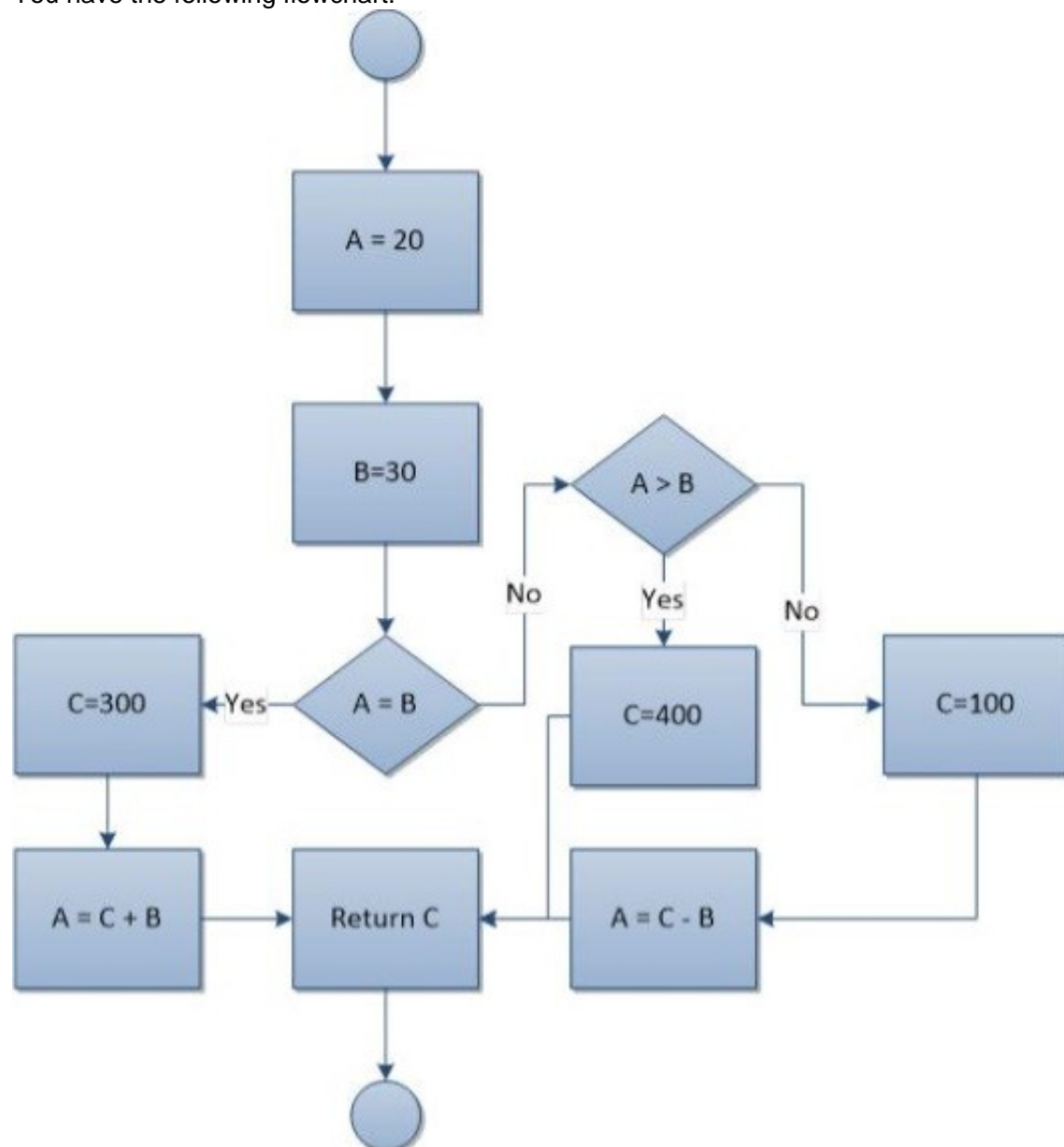
The server, in response to this request, displays the Web service's HTML description page.

The Web service's HTML description page shows you all the Web service methods supported by a particular Web service. Link to the desired Web service method and enter the necessary parameters to test the method and see the XML response.

NEW QUESTION 64

HOTSPOT - (Topic 1)

You have the following flowchart:



Use the drop-down menus to select the answer choice that completes each statement Each correct selection is worth one point.

Answer Area

The value that is returned is [answer choice].

The value of A is [answer choice].

Answer Area

The value that is returned is [answer choice].

20
100
300
400

The value of A is [answer choice].

20
30
70
330

- A. Mastered
B. Not Mastered

Answer: A

Explanation:

Answer Area

The value that is returned is [answer choice].

20
100
300
400

The value of A is [answer choice].

20
30
70
330

NEW QUESTION 65

- (Topic 1)

In which order do the typical phases of the Software Development Life Cycle occur?

- A. Development, design, requirements gathering, and testing
B. Design, requirements gathering, development, and testing
C. Design, development, requirements gathering, and testing
D. Requirements gathering, design, development, and testing

Answer: D

NEW QUESTION 66

- (Topic 1)

Which term is used to describe a class that inherits functionality from an existing class?

- A. Base class
B. Inherited class
C. Derived class
D. Superclass

Answer: C

Explanation:

Classes (but not structs) support the concept of inheritance. A class that derives from another class (the base class) automatically contains all the public, protected, and internal members of the base class except its constructors and destructors.

NEW QUESTION 67

- (Topic 1)

You need to allow a consumer of a class to modify a private data member. What should you do?

- A. Assign a value directly to the data member.
- B. Provide a private function that assigns a value to the data member.
- C. Provide a public function that assigns a value to the data member.
- D. Create global variables in the class.

Answer: C

Explanation:

In this example (see below), the Employee class contains two private data members, name and salary. As private members, they cannot be accessed except by member methods. Public methods named GetName and Salary are added to allow controlled access to the private members. The name member is accessed by way of a public method, and the salary member is accessed by way of a public read-only property.

Note: The private keyword is a member access modifier. Private access is the least permissive access level. Private members are accessible only within the body of the class or the struct in which they are declared

Example:

```
class Employee2
{
private string name = "FirstName, LastName"; private double salary = 100.0;
public string GetName()
{
return name;
}
public double Salary
{
get { return salary; }
}
}
```

NEW QUESTION 71

- (Topic 1)

Which term is used to describe small units of text that are stored on a client computer and retrieved to maintain state?

- A. trace
- B. cookie
- C. server transfer
- D. cross-page post

Answer: B

Explanation:

HTTP is a stateless protocol. This means that user data is not persisted from one Web page to the next in a Web site. One way to maintain state is through the use of cookies. Cookies store a set of user specific information, such as a reference identifier for a database record that holds customer information.

NEW QUESTION 73

- (Topic 2)

Simulating the final design of an application in order to ensure that the development is progressing as expected is referred to as:

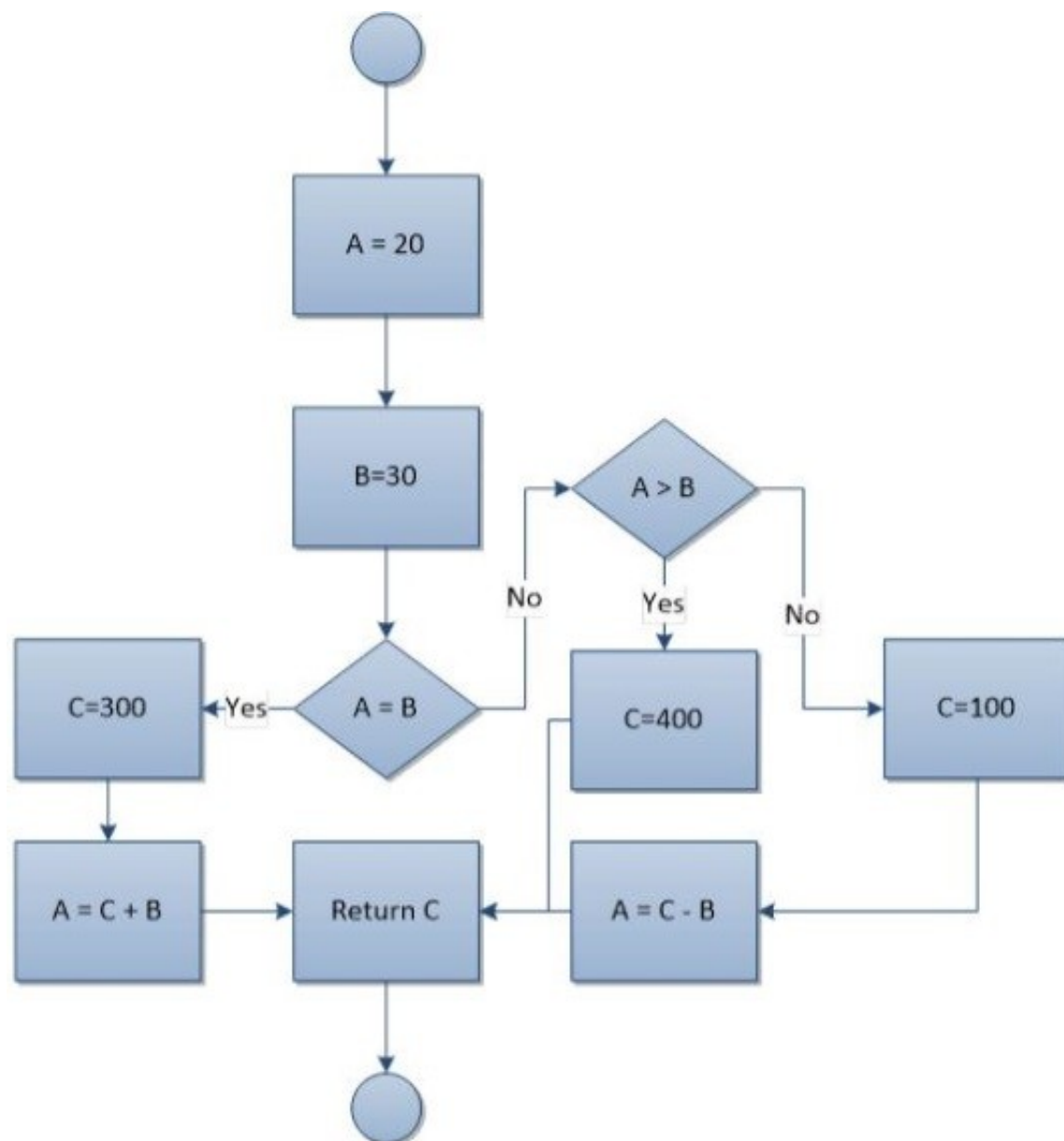
- A. Software testing
- B. Prototyping
- C. Flowcharting
- D. Analyzing requirements

Answer: A

NEW QUESTION 76

HOTSPOT - (Topic 2)

You have the following flowchart:



Use the drop-down menus to select the answer choice that completes each statement Each correct selection is worth one point.

Answer Area

The value that is returned is [answer choice].

The value of A is [answer choice].

Answer Area

The value that is returned is [answer choice].

- 20
- 100
- 300
- 400

The value of A is [answer choice].

- 20
- 30
- 70
- 330

- A. Mastered
 B. Not Mastered

Answer: A

Explanation:

Answer Area

The value that is returned is [answer choice].

- 20
- 100
- 300
- 400

The value of A is [answer choice].

- 20
- 30
- 70
- 330

NEW QUESTION 80

HOTSPOT - (Topic 2)

You are reviewing the following class that is used to manage the results of a 5K race:

```
Public Class Player
    Private _name As String
    Public Const Key As String = "player"

    Private _ranking As Integer
    Public Property Ranking() As Integer
        Get
            Return _ranking
        End Get
        Private Set(value As Integer)
            _ranking = value
        End Set
    End Property

    Public Function MatchName(searchTerm As String) As Boolean
        Return _name.ToLower() = searchTerm
    End Function

    Public Sub SetResult(rank As Integer, name As String)
        If (Not IsNothing(_name)) Then
            Return
        End If

        Ranking = rank
        _name = name
    End Sub
End Class
```

For each of the following statements, select Yes if the statement is true. Otherwise, select No. Each correct selection is worth one point.

Answer Area

Description of Behavior	Yes	No
You can only set the player’s ranking once.	<input type="radio"/>	<input type="radio"/>
If you call the MatchName method, the code will throw an exception.	<input type="radio"/>	<input type="radio"/>
You can change Key from “player” to “racer”.	<input type="radio"/>	<input type="radio"/>

- A. Mastered
- B. Not Mastered

Answer: A

Explanation:

Answer Area

Description of Behavior	Yes	No
You can only set the player's ranking once.	<input checked="" type="radio"/>	<input type="radio"/>
If you call the MatchName method, the code will throw an exception.	<input checked="" type="radio"/>	<input type="radio"/>
You can change Key from "player" to "racer".	<input type="radio"/>	<input checked="" type="radio"/>

NEW QUESTION 83

- (Topic 2)

This question requires that you evaluate the underlined text to determine if it is correct.

When creating a site to utilize message queuing, the "IP address" must be configured to MSMQ.

Select the correct answer if the underlined text does not make the statement correct. Select "No change is needed" if the underlined text makes the statement correct.

- A. No change is needed
- B. protocol
- C. host header
- D. port

Answer: B

Explanation:

MSMQ is a messaging protocol that allows applications running on separate servers/processes to communicate in a failsafe manner.

NEW QUESTION 84

- (Topic 2)

What are two methods that can be used to evaluate the condition of a loop at the start of each iteration? (Each correct answer presents a complete solution. Choose two.)

- A. For
- B. D
- C. . . While
- D. If
- E. While

Answer: AD

Explanation:

For and While constructs check at the start of each iteration.

NEW QUESTION 88

- (Topic 2)

What are the three basic states that a Windows service can be in? (Choose three.)

- A. running
- B. starting
- C. halted
- D. stopped
- E. paused

Answer: BDE

Explanation:

A service can exist in one of three basic states: Running, Paused, or Stopped.

NEW QUESTION 91

- (Topic 2)

How should you configure an application to consume a Web service?

- A. Add the Web service to the development computer.
- B. Add a reference to the application in the Web service.
- C. Add a reference to the Web service in the application.
- D. Add the Web service code to the application.

Answer: C

Explanation:

Start by adding a Service Reference to the project. Right-click the ConsoleApplication1 project and choose ??Add Service Reference??:

NEW QUESTION 94

- (Topic 2)

All objects in .NET inherit from which item?

- A. a reference type
- B. the System.Type class
- C. a value type
- D. the System.Object class

Answer: D

Explanation:

The System.Object class supports all classes in the .NET Framework class hierarchy and provides low-level services to derived classes. This is the ultimate base class of all classes in the .NET Framework; it is the root of the type hierarchy.

NEW QUESTION 98

- (Topic 2)

Two classes named Circle and Square inherit from the Shape class. Circle and Square both inherit Area from the Shape class, but each computes Area differently. Which term is used to describe this object-oriented concept?

- A. encapsulation
- B. superclassing
- C. polymorphism
- D. overloading

Answer: C

Explanation:

You can use polymorphism to in two basic steps:

Create a class hierarchy in which each specific shape class derives from a common base class.

Use a virtual method to invoke the appropriate method on any derived class through a single call to the base class method.

NEW QUESTION 100

- (Topic 2)

Which type of Windows application presents a parent window that contains child windows?

- A. Multiple-document interface (MDI)
- B. Command-line interface (CLI)
- C. Single-document interface (SDI)
- D. Application programming interface (API)

Answer: A

Explanation:

A multiple document interface (MDI) is a graphical user interface in which multiple windows reside under a single parent window. Such systems often allow child windows to embed other windows inside them as well, creating complex nested hierarchies. This contrasts with single document interfaces (SDI) where all windows are independent of each other.

NEW QUESTION 102

- (Topic 2)

You are developing a webpage that enables students to manage races.

The webpage will display two lists: past races and upcoming races. The page also contains a sidebar with contact information and a panel with social media settings that can be edited. Race results can be shared on social media.

How many components will be on the webpage?

- A. 2
- B. 3
- C. 4
- D. 5

Answer: C

NEW QUESTION 107

- (Topic 2)

You have a website that includes a form for username and password.

You need to ensure that users enter their username and password. The validation must work in all browsers.

Where should you put the validation control?

- A. in the Web.config file
- B. in the server-side code only
- C. in the client-side code only

D. in both the client-side code and the server-side code

Answer: D

Explanation:

From version 2.0 on, ASP.NET recognized the JavaScript capabilities of these browsers, so client-side validation is now available to all modern browsers, including Opera, Firefox, and others. Support is even better now in ASP.NET 4.0. That said, it's important not to forget that JavaScript can be disabled in any browser, so client-side validation cannot be relied upon—we must always validate any submitted data on the server.

NEW QUESTION 110

- (Topic 2)

What are two advantages of normalization in a database? (Choose two.)

- A. reduces schema limitations
- B. minimizes impact of data corruption
- C. decreases space used on disk
- D. prevents data inconsistencies

Answer: CD

NEW QUESTION 111

- (Topic 2)

A class named Manager is derived from a parent class named Employee. The Manager class includes characteristics that are unique to managers. Which term is used to describe this object-oriented concept?

- A. inheritance
- B. data modeling
- C. data hiding
- D. encapsulation

Answer: A

Explanation:

Classes (but not structs) support the concept of inheritance. A class that derives from another class (the base class) automatically contains all the public, protected, and internal members of the base class except its constructors and destructors.

Incorrect:

not D: Encapsulation is sometimes referred to as the first pillar or principle of object-oriented programming. According to the principle of encapsulation, a class or struct can specify how accessible each of its members is to code outside of the class or struct. Methods and variables that are not intended to be used from outside of the class or assembly can be hidden to limit the potential for coding errors or malicious exploits.

NEW QUESTION 112

- (Topic 2)

Which function does Simple Object Access Protocol (SOAP) provide when using Web services?

- A. communications protocol
- B. model for describing Web services
- C. directory of registered Web services
- D. security model

Answer: :A

Explanation:

SOAP, originally defined as Simple Object Access Protocol, is a protocol specification for exchanging structured information in the implementation of web services in computer networks. It relies on XML Information Set for its message format, and usually relies on other application layer protocols, most notably Hypertext Transfer Protocol (HTTP) or Simple Mail Transfer Protocol (SMTP), for message negotiation and transmission.

NEW QUESTION 115

- (Topic 2)

You execute the following code.

```
For i = 0 to 100
    If I Mod 2 <> 0 Then
        Console.WriteLine("Hello")
    End If
Next
```

How many times will the word Hello be printed?

- A. 49
- B. 50
- C. 51
- D. 100

Answer: B

Explanation:

The mod operator computes the remainder after dividing its first operand by its second. All numeric types have predefined remainder operators. In this case the remainder will be nonzero 50 times (for i with values 1, 3, 5,...,99).

NEW QUESTION 117

- (Topic 2)

How many parameters can a default constructor have?

- A. 1
- B. 2
- C. 3 or more

Answer: :A

Explanation:

If a class contains no instance constructor declarations, a default instance constructor is automatically provided. That default constructor simply invokes the parameterless constructor of the direct base class.

NEW QUESTION 118

- (Topic 2)

What does the Console.Error property do within a console-based application?

- A. sets the standard error output stream
- B. gets the standard error input stream
- C. sets the standard error input stream
- D. gets the standard error output stream

Answer: D

Explanation:

The Console.Error property gets the standard error output stream.

NEW QUESTION 123

- (Topic 2)

You need to group all the style settings into a separate file that can be applied to all the pages in a Web application.

What should you do?

- A. Use a Cascading Style Sheet (CSS).
- B. Use an Extensible Markup Language (XML) schema.
- C. Use inline styles.
- D. Use a WebKit.

Answer: A

Explanation:

Cascading Style Sheets (CSS) is a style sheet language used for describing the look and formatting of a document written in a markup language.

CSS is designed primarily to enable the separation of document content from document presentation, including elements such as the layout, colors, and fonts.

NEW QUESTION 127

- (Topic 2)

Which type of function can a derived class override?

- A. A Protected Overridable member function
- B. A Shared function
- C. A Private Overridable function
- D. A non-overridable public member function

Answer: A

Explanation:

The Overridable modifier allows a property or method in a class to be overridden in a derived class.

You cannot specify Overridable on a Private method.

NEW QUESTION 130

- (Topic 2)

Which three phrases are advantages of connection pooling? (Choose three.)

- A. reduces load on the server
- B. improved performance
- C. reduces time to create a connection
- D. requires no configuration
- E. improved scalability

Answer: BCE

Explanation:

B: In connection pooling, after a connection is created, it is placed in the pool and it is used over again so that a new connection does not have to be established.

E: Connection pooling often improves application performance, concurrency and scalability.

C: Connection pooling also cuts down on the amount of time a user must wait to establish a connection to the database.

NEW QUESTION 134

- (Topic 2)

You have a class named Truck that inherits from a base class named Vehicle. The Vehicle class includes a protected method named brake (). How should you call the Truck Class implementation of the brake () method?

- A. MyBase.brake ()
- B. Truck.brake()
- C. Vehicle.brake()
- D. Me.brake ()

Answer: A

Explanation:

The MyBase keyword behaves like an object variable referring to the base class of the current instance of a class. MyBase is commonly used to access base class members that are overridden or shadowed in a derived class.

NEW QUESTION 138

- (Topic 2)

This question requires that you evaluate the underlined text to determine if it is correct. The default entry point for a console application is the Class method. Select the correct answer if the underlined text does not make the statement correct. Select "No change is needed" if the underlined text makes the statement correct.

- A. No change is needed
- B. Main
- C. Program
- D. Object

Answer: B

Explanation:

The default entry point for a console application is the Class Main.

NEW QUESTION 140

- (Topic 2)

The purpose of the Catch section in an exception handler is to:

- A. Conclude the execution of the application.
- B. Break out of the error handler.
- C. Execute code only when an exception is thrown.
- D. Execute code regardless of whether an exception is thrown.

Answer: C

NEW QUESTION 145

- (Topic 2)

You execute the following code.

```
Dim beakerFull As Boolean = True
Dim flameOn As Boolean = False
Dim iResult As Integer = 0
```

```
If beakerFull = True Then
    If flameOn = True Then
        iResult = 1
    Else
        iResult = 2
    End If
Else
    iResult = 3
End If
```

What will the variable result be?

- A. 1
- B. 2
- C. 3

Answer: C

NEW QUESTION 147

- (Topic 2)

This question requires that you evaluate the underlined text to determine if it is correct. The Response.Redirect method is used to transfer processing of the current page to a new page, and then return processing back to the calling page once processing of the new page has completed.

Select the correct answer if the underlined text does not make the statement correct. Select "No change is needed" if the underlined text makes the statement correct.

- A. No change is needed
- B. Server.Transfer method
- C. Server.Execute method
- D. meta http-equiv="refresh" tag

Answer: C

Explanation:

The Execute method calls an .asp file, and processes it as if it were part of the calling ASP script. The Execute method is similar to a procedure call in many programming languages.

Incorrect:

* Response.Redirect Method

The Redirect method causes the browser to redirect the client to a different URL.

* The Server.Transfer method sends all of the information that has been assembled for processing by one .asp file to a second .asp file.

NEW QUESTION 151

- (Topic 2)

Where must Internet Information Services (IIS) be installed in order to run a deployed ASP. NET application?

- A. on the computer that you plan to deploy from
- B. on the client computers
- C. on the computer that hosts the application
- D. on the Application Layer Gateway Service

Answer: C

Explanation:

IIS is run on the web server. The web server is hosting the application.

NEW QUESTION 154

HOTSPOT - (Topic 2)

For each of the following statements, select Yes if the statement is true. Otherwise, select No. Each correct selection is worth one point.

Answer Area

Description of Behavior	Yes	No
An entity relationship diagram (ERD) is designed for an object-oriented database.	<input type="radio"/>	<input type="radio"/>
An entity relationship diagram (ERD) contains entities, relationships, and attributes.	<input type="radio"/>	<input type="radio"/>
Cardinality refers to how one table is linked to another table; as one-to-many.	<input type="radio"/>	<input type="radio"/>

- A. Mastered
- B. Not Mastered

Answer: A

Explanation:

Answer Area

Description of Behavior	Yes	No
An entity relationship diagram (ERD) is designed for an object-oriented database.	<input type="radio"/>	<input checked="" type="radio"/>
An entity relationship diagram (ERD) contains entities, relationships, and attributes.	<input checked="" type="radio"/>	<input type="radio"/>
Cardinality refers to how one table is linked to another table; as one-to-many.	<input checked="" type="radio"/>	<input type="radio"/>

NEW QUESTION 157

- (Topic 2)

What is displayed when you attempt to access a Web service by using a Web browser?

- A. a visual depiction of your preliminary connection to the Web service
- B. a listing of methods that are available in the Web service
- C. an error page explaining that you have accessed the Web service incorrectly
- D. a directory listing of the Web services application structure

Answer: B

Explanation:

The server, in response to this request, displays the Web service's HTML description page.

The Web service's HTML description page shows you all the Web service methods supported by a particular Web service. Link to the desired Web service method and enter the necessary parameters to test the method and see the XML response.

NEW QUESTION 161

- (Topic 2)

Your database administrators will not allow you to write SQL code in your application. How should you retrieve data in your application?

- A. Reference an index in the database.
- B. Call a stored procedure.
- C. Query a database view.
- D. Script a SELECT statement to a file.

Answer: B

Explanation:

The SQL will only be inside the stored procedure.

NEW QUESTION 162

DRAG DROP - (Topic 2)

You are developing an application to display track and field race results.

The application must display the race results twice. The first time it must display only the winner and runner-up. The second time it must display all participants.

The code used to display results is shown below.

```
Public Sub Display()  
    For Each ranking In Rankings(True)  
        DisplayName(ranking)  
    Next  
  
    For Each ranking In Rankings(False)  
        Displayname(ranking)  
    Next  
End Sub
```

You need to implement the Rankings() function.

Complete the function to meet the requirements. (To answer, drag the appropriate code segment from the column on the left to its location on the right. Each code segment may be used once, more than once, or not at all. Each correct match is worth one point.)

Code Segments	Answer Area
<div>Exit For</div>	<pre>Private Iterator Function Rankings(top2Only As Boolean) _ As IEnumerable(Of String) Code Segment "John" Code Segment "Nancy" If (top2Only) Then Code Segment End If Code Segment "Chris" End Function</pre>
<div>Exit Function</div>	
<div>Return</div>	
<div>Yield</div>	

- A. Mastered
- B. Not Mastered

Answer: A

Explanation:

Code Segments	Answer Area
<div>Exit For</div>	<pre>Private Iterator Function Rankings(top2Only As Boolean) _ As IEnumerable(Of String) Yield "John" Yield "Nancy" If (top2Only) Then Exit Function End If Yield "Chris" End Function</pre>
<div>Exit Function</div>	
<div>Return</div>	
<div>Yield</div>	

NEW QUESTION 167

- (Topic 2)

You need to create a stored procedure that passes in a person's name and age. Which statement should you use to create the stored procedure?

A. `UPDATE PROCEDURE StoreData
@UserName nvarchar(255),
@Age int`

B. `CREATE PROCEDURE StoreData
@UserName char,
@Age double`

C. `CREATE PROCEDURE StoreData
@UserName nvarchar(255),
@Age int`

D. `CREATE PROCEDURE StoreData (@UserName, @Age)`

- A. Option A
- B. Option B
- C. Option C
- D. Option D

Answer: C

Explanation:

Example (nvarchar and int are best here):

The following example creates a stored procedure that returns information for a specific

employee by passing values for the employee's first name and last name. This procedure accepts only exact matches for the parameters passed.

```
CREATE PROCEDURE HumanResources.uspGetEmployees
```

```
@LastName nvarchar(50),
```

```
@FirstName nvarchar(50) AS
```

```
SET NOCOUNT ON;
```

```
SELECT FirstName, LastName, JobTitle, Department FROM HumanResources.vEmployeeDepartment
```

```
WHERE FirstName = @FirstName AND LastName = @LastName; GO
```

NEW QUESTION 170

- (Topic 2)

You have a SQL Server database named MyDB that uses SQL Server Authentication. Which connection string should you use to connect to MyDB?

- A. Data Source=MyDB; Integrated Security=SSPf; Initial Catalog=Sales
- B. Data Source=MyDB; Trusted_Connection=True; MultipleActiveResultSets=True; Initial Catalog=Sales
- C. Data Source=MyDB; Integrated Security=True; Initial Catalog=Sales
- D. Data Source=MyDB; UserID=username; Password=P@sswOrd; Initial Catalog=Sales

Answer: D

Explanation:

Integrated Security Integrated Security is by default set to false.

When false, User ID and Password are specified in the connection.

Incorrect:

not C: Windows Authentication (Integrated Security = true) remains the most secure way to log in to a SQL Server database.

NEW QUESTION 172

- (Topic 2)

You need to debug a Windows Service application by using breakpoints. What should you do?

- A. Write all events to an event log.
- B. Set the Windows Service status to Paused.
- C. Implement the Console.WriteLine method throughout the Windows Service.
- D. use the Attach to Process menu in Microsoft Visual Studio.

Answer: D

Explanation:

* Because a service must be run from within the context of the Services Control Manager rather than from within Visual Studio, debugging a service is not as straightforward as debugging other Visual Studio application types. To debug a service, you must start the service and then attach a debugger to the process in which it is running.

* To debug a service Install your service.

Start your service, either from Services Control Manager, Server Explorer, or from code. In Visual Studio, choose Attach to Process from the Debug menu.

Etc.

NEW QUESTION 174

- (Topic 2)

You have a Windows Service running in the context of an account that acts as a non- privileged user on the local computer. The account presents anonymous credentials to any remote server.
What is the security context of the Windows Service?

- A. Local System
- B. NetworkService
- C. user
- D. LocalService

Answer: D

Explanation:
LocalService, which runs in the context of an account that acts as a non- privileged user on the local computer, and presents anonymous credentials to any remote server;

NEW QUESTION 179

- (Topic 2)
You have a class named Glass that inherits from a base class named Window. The Window class includes a protected method named break().
How should you call the Glass class implementation of the break() method?

- A. Glass.break()
- B. Window.break()
- C. Me.break()
- D. MyBase.break()

Answer: B

NEW QUESTION 181

HOTSPOT - (Topic 2)
You have a base class named Tree with a friend property named color and a protected property named NumberOfLeaves. In the same project, you also have a class named Person.
For each of the following statements, select Yes if the statement is true. Otherwise, select No. Each correct selection is worth one point.

Answer Area

Description of Behavior	Yes	No
Methods in the Person class can access the color property.	<input type="radio"/>	<input type="radio"/>
Methods in the Person class can access the NumberOfLeaves property.	<input type="radio"/>	<input type="radio"/>
Methods in the Tree class can access all private properties in Person.	<input type="radio"/>	<input type="radio"/>

- A. Mastered
- B. Not Mastered

Answer: A

Explanation:
Answer Area

Description of Behavior	Yes	No
Methods in the Person class can access the color property.	<input checked="" type="radio"/>	<input type="radio"/>
Methods in the Person class can access the NumberOfLeaves property.	<input type="radio"/>	<input checked="" type="radio"/>
Methods in the Tree class can access all private properties in Person.	<input type="radio"/>	<input checked="" type="radio"/>

NEW QUESTION 183

.....

About ExamBible

[Your Partner of IT Exam](#)

Found in 1998

ExamBible is a company specialized on providing high quality IT exam practice study materials, especially Cisco CCNA, CCDA, CCNP, CCIE, Checkpoint CCSE, CompTIA A+, Network+ certification practice exams and so on. We guarantee that the candidates will not only pass any IT exam at the first attempt but also get profound understanding about the certificates they have got. There are so many alike companies in this industry, however, ExamBible has its unique advantages that other companies could not achieve.

Our Advances

* 99.9% Uptime

All examinations will be up to date.

* 24/7 Quality Support

We will provide service round the clock.

* 100% Pass Rate

Our guarantee that you will pass the exam.

* Unique Gurantee

If you do not pass the exam at the first time, we will not only arrange FULL REFUND for you, but also provide you another exam of your claim, ABSOLUTELY FREE!

NEW QUESTION 1

- (Topic 1)

The elements of an array must be accessed by:

- A. Calling the item that was most recently inserted into the array.
- B. Calling the last item in the memory array.
- C. Using an integer index.
- D. Using a first-in, last-out (FILO) process.

Answer: C

NEW QUESTION 2

- (Topic 1)

You have a website that includes a form for username and password.

You need to ensure that users enter their username and password. The validation must work in all browsers.

Where should you put the validation control?

- A. in both the client-side code and the server-side code
- B. in the client-side code only
- C. in the Web.config file
- D. in the server-side code only

Answer: A

Explanation:

From version 2.0 on, ASP.NET recognized the JavaScript capabilities of these browsers, so client-side validation is now available to all modern browsers, including Opera, Firefox, and others. Support is even better now in ASP.NET 4.0. That said, it's important not to forget that JavaScript can be disabled in any browser, so client-side validation cannot be relied upon—we must always validate any submitted data on the server.

NEW QUESTION 3

- (Topic 1)

The following functions are defined:

```
private static int Printer(int j)
{
    for (var i = j; i > 0; i = Printer(i - 1))
    {
        Console.Write(i);
    }
    return j;
}
```

What does the console display after the following line? Printer(2);

- A. 210
- B. 211
- C. 2101
- D. 2121

Answer: B

NEW QUESTION 4

- (Topic 1)

You have a SQL Server database named MyDB that uses SQL Server Authentication. Which connection string should you use to connect to MyDB?

- A. Data Source=MyDB; UserID=username; Password=P@sswOrd; Initial Catalog=Sales
- B. Data Source=MyDB; Integrated Security=SSPI; Initial Catalog=Sales
- C. Data Source=MyDB; Integrated Security=True; Initial Catalog=Sales
- D. Data Source=MyDB; Trusted_Connection=True; MultipleActiveResultSets=True; Initial Catalog=Sales

Answer: A

Explanation:

Integrated Security Integrated Security is by default set to false.

When false, User ID and Password are specified in the connection.

Incorrect:

not C: Windows Authentication (Integrated Security = true) remains the most secure way to log in to a SQL Server database.

NEW QUESTION 5

- (Topic 1)

How should you configure an application to consume a Web service?

- A. Add the Web service to the development computer.
- B. Add a reference to the Web service in the application.
- C. Add a reference to the application in the Web service.
- D. Add the Web service code to the application.

Answer: B

Explanation:

Start by adding a Service Reference to the project. Right-click the ConsoleApplication1 project and choose ??Add Service Reference??:

NEW QUESTION 6

- (Topic 1)

You execute the following code.

```
bool beakerFull = true;
bool flameOn = false;
int iResult;

switch (beakerFull)
{
    case true:
        switch (flameOn)
        {
            case true:
                iResult = 1;
                break;
            case false:
                iResult = 2;
                break;
        }
        break;
    case false:
        switch (flameOn)
        {
            case false:
                iResult = 3;
                break;
            case true:
                iResult = 4;
                break;
        }
        break;
}
```

What will the variable result be?

- A. 1
- B. 2
- C. 3
- D. 4

Answer: B

NEW QUESTION 7

- (Topic 1)

What are the three basic states that a Windows service can be in? (Choose three.)

- A. halted
- B. running
- C. stopped
- D. paused
- E. starting

Answer: BCD

Explanation:

A service can exist in one of three basic states: Running, Paused, or Stopped.

NEW QUESTION 8

- (Topic 1)

Which three items are benefits of encapsulation? (Choose three.)

- A. maintainability
- B. flexibility
- C. restricted access
- D. inheritance
- E. performance

Answer: ABC

Explanation:

Encapsulation is the packing of data and functions into a single component.

In programming languages, encapsulation is used to refer to one of two related but distinct notions, and sometimes to the combination thereof:

* A language mechanism for restricting access to some of the object's components.

* A language construct that facilitates the bundling of data with the methods (or other functions) operating on that data.

Incorrect:

not D: Encapsulation is one of the four fundamental OOP concepts. The other three are inheritance, polymorphism, and abstraction.

NEW QUESTION 9

- (Topic 1)

Your database administrators will not allow you to write SQL code in your application. How should you retrieve data in your application?

- A. Script a SELECT statement to a file.
- B. Query a database view.
- C. Call a stored procedure.
- D. Reference an index in the database.

Answer: C

Explanation:

The SQL will only be inside the stored procedure.

NEW QUESTION 10

- (Topic 1)

What are two methods that can be used to evaluate the condition of a loop at the start of each iteration? (Each correct answer presents a complete solution. Choose two.)

- A. If
- B. D
- C. . . While
- D. For
- E. While

Answer: CD

Explanation:

For and While constructs check at the start of each iteration.

NEW QUESTION 10

- (Topic 1)

You are creating an application that presents the user with a Windows Form. You need to configure the application to display a message box to confirm that the user wants to close the form.

Which event should you handle?

- A. Deactivate
- B. Leave
- C. FormClosed
- D. FormClosing

Answer: D

Explanation:

The Closing event occurs as the form is being closed.

NEW QUESTION 15

- (Topic 1)

You need to create an application that processes data on a last-in, first-out (LIFO) basis. Which data structure should you use?

- A. Queue
- B. Tree
- C. Stack
- D. Array

Answer: C

Explanation:

A stack implements LIFO.

NEW QUESTION 16

- (Topic 1)

You are designing a Windows Store application.

You need to design the application so that users can share content by connecting two or more devices by physically tapping the devices together.

Which user experience (UX) guideline for Windows Store applications should you use?

- A. Share and data exchange

- B. location-awareness
- C. device-awareness
- D. proximity gestures

Answer: A

NEW QUESTION 17

- (Topic 1)
Which two types of information should you include in an effective test case? (Choose two.)

- A. the expected result from testing the case
- B. multiple actions combined as a single step to test the case
- C. any pre-conditions necessary to test the case
- D. the stakeholders who originated the test case

Answer: AB

Explanation:

You can create manual test cases using Microsoft Test Manager that have both action and validation test steps. You can also share a set of common test steps between multiple test cases called shared steps. This simplifies maintenance of test steps if your application under test changes.

NEW QUESTION 19

DRAG DROP - (Topic 1)
You are developing an application to display track and field race results. The application must display the race results twice. The first time it must display only the winner and runner-up. The second time it must display all participants. The code used to display results is shown below.

```
public void Display()
{
    // display top two
    foreach (var ranking in Rankings(true))
    {

        DisplayName(ranking);
    }

    // display all
    foreach (var ranking in Rankings(false))
    {
        DisplayName(ranking);
    }
}
```

You need to implement the Rankings() function.
Complete the function to meet the requirements. {To answer, drag the appropriate code segment from the column on the left to its location on the right. Each code segment may be used once, more than once, or not at all. Each correct match is worth one point.)

Code Segments	Answer Area
<div>break</div>	<pre>private IEnumerable<string> Rankings(bool top20Only) {</pre>
<div>return</div>	<div>Code Segment"John";</div>
<div>yield break</div>	<div>Code Segment"Nancy";</div>
<div>yield return</div>	<pre>if (top20Only)</pre>
	<div>Code Segment;</div>
	<div>Code Segment"Chris";</div>
	<pre>}</pre>

- A. Mastered
- B. Not Mastered

Answer: A

Explanation:

Code Segments

break

return

yield break

yield return

Answer Area

```
private IEnumerable<string> Rankings(bool top20Only)
{
    yield return "John";
    yield return "Nancy";

    if (top20Only)
    {
        yield break;
        yield return "Chris";
    }
}
```

NEW QUESTION 20

- (Topic 1)
The throw keyword is used to perform which two actions? (Choose two.)

- A. stop processing of the code
- B. move error handling to a separate thread
- C. raise exceptions
- D. re-throw exceptions as a different type

Answer: CD

Explanation:

* The Throw statement throws an exception that you can handle with structured exception-handling code (Try...Catch...Finally) or unstructured exception- handling code (On Error GoTo). You can use the Throw statement to trap errors within your code because Visual Basic moves up the call stack until it finds the appropriate exception- handling code.
* This example throws an ApplicationException exception. Throw New ApplicationException

NEW QUESTION 24

HOTSPOT - (Topic 1)
For each of the following statements, select Yes if the statement is true. Otherwise, select No. Each correct selection is worth one point.

Description of Behavior	Yes	No
A queue’s items are stored in the order they were added.	<input type="radio"/>	<input type="radio"/>
A queue is a first in, first out (FIFO) data structure.	<input type="radio"/>	<input type="radio"/>
A queue has a limited number of items.	<input type="radio"/>	<input type="radio"/>

- A. Mastered
- B. Not Mastered

Answer: A

Explanation:

Answer Area

Description of Behavior	Yes	No
A queue's items are stored in the order they were added.	<input checked="" type="radio"/>	<input type="radio"/>
A queue is a first in, first out (FIFO) data structure.	<input checked="" type="radio"/>	<input type="radio"/>
A queue has a limited number of items.	<input type="radio"/>	<input checked="" type="radio"/>

NEW QUESTION 27

- (Topic 1)

You have a stack that contains integer values. The values are pushed onto the stack in the following order: 2,4,6,8.

The following sequence of operations is executed:

Pop Push 3 Pop Push 4

Push 6

Push 7 Pop Pop Pop

What is the value of the top element after these operations are executed?

- A. 2
- B. 3
- C. 6
- D. 7

Answer: B

NEW QUESTION 30

- (Topic 1)

This question requires that you evaluate the underlined text to determine if it is correct.

The process of transforming compiled C# code into an XML string for a web service is known as deserialization.

Select the correct answer if the underlined text does not make the statement correct. Select "No change is needed" if the underlined text makes the statement correct.

- A. No change is needed
- B. serialization
- C. decoding
- D. encoding

Answer: B

Explanation:

Serialization is the process of converting an object into a stream of bytes in order to store the object or transmit it to memory, a database, or a file. Its main purpose is to save the state of an object in order to be able to recreate it when needed.

Serialization allows the developer to save the state of an object and recreate it as needed, providing storage of objects as well as data exchange. Through serialization, a developer can perform actions like sending the object to a remote application by means of a Web

Service, passing an object from one domain to another, passing an object through a firewall as an XML string, or maintaining security or user-specific information across applications.

NEW QUESTION 34

- (Topic 1)

You plan to create an application for your company. The application will run automated routines and write the results to a text-based log file. Little or no user interaction is required.

Security requirements on the host computers prevent you from running applications on startup, and users must be able to see the status easily on the screen. The host computers also have limited memory and monitors that display only two colors. These computers will have no network connectivity.

Which type of application should you use for this environment?

- A. Directx
- B. Windows Service
- C. console-based
- D. Windows Store app

Answer: C

Explanation:

Building Console Applications

Applications in the .NET Framework can use the System.Console class to read characters from and write characters to the console. Data from the console is read from the standard input stream, data to the console is written to the standard output stream, and error data to the console is written to the standard error output stream.

NEW QUESTION 36

- (Topic 1)
You need to group all the style settings into a separate file that can be applied to all the pages in a Web application.
What should you do?

- A. Use a Cascading Style Sheet (CSS).
- B. Use inline styles.
- C. Use an Extensible Markup Language (XML) schema.
- D. Use a WebKit.

Answer: A

Explanation:

Cascading Style Sheets (CSS) is a style sheet language used for describing the look and formatting of a document written in a markup language. CSS is designed primarily to enable the separation of document content from document presentation, including elements such as the layout, colors, and fonts.

NEW QUESTION 39

- (Topic 1)
You execute the following code.

```
for(int i = 0; i <= 100; i++)
{
    if (i % 2 != 0)
    {
        Console.WriteLine("Hello")
    }
}
```

How many times will the word Hello be printed?

- A. 49
- B. 50
- C. 51
- D. 100

Answer: B

Explanation:

The % operator computes the remainder after dividing its first operand by its second. All numeric types have predefined remainder operators. In this case the reminder will be nonzero 50 times (for i with values 1, 3, 5,...,99).

NEW QUESTION 42

HOTSPOT - (Topic 1)
For each of the following statements, select Yes if the statement is true. Otherwise, select No. Each correct selection is worth one point.

Answer Area

Description of Behavior	Yes	No
An entity relationship diagram (ERD) is designed for an object-oriented database.	<input type="radio"/>	<input type="radio"/>
An entity relationship diagram (ERD) contains entities, relationships, and attributes.	<input type="radio"/>	<input type="radio"/>
Cardinality refers to how one table is linked to another table; as one-to-many.	<input type="radio"/>	<input type="radio"/>

- A. Mastered
- B. Not Mastered

Answer: A

Explanation:

Answer Area

Description of Behavior	Yes	No
An entity relationship diagram (ERD) is designed for an object-oriented database.	<input type="radio"/>	<input checked="" type="radio"/>
An entity relationship diagram (ERD) contains entities, relationships, and attributes.	<input checked="" type="radio"/>	<input type="radio"/>
Cardinality refers to how one table is linked to another table; as one-to-many.	<input checked="" type="radio"/>	<input type="radio"/>

NEW QUESTION 43

- (Topic 1)

You are creating an application that accepts input and displays a response to the user. You cannot create a graphical interface for this application. Which type of application should you create?

- A. Windows Forms
- B. Windows Service
- C. Web-based
- D. Console-based

Answer: C

NEW QUESTION 46

- (Topic 1)

How many parameters can a default constructor have?

- A. 1
- B. 2
- C. 3 or more

Answer: A

Explanation:

If a class contains no instance constructor declarations, a default instance constructor is automatically provided. That default constructor simply invokes the parameterless constructor of the direct base class.

NEW QUESTION 48

- (Topic 1)

This question requires that you evaluate the underlined text to determine if it is correct.

When a base class declares a method as virtual, the method is hidden from implementation by a derived class.

Select the correct answer if the underlined text does not make the statement correct. Select "No change is needed" if the underlined text makes the statement correct.

- A. No change is needed
- B. can be overridden with its own implementation by a derived class
- C. must be overridden in any non-abstract class that directly inherits from that class
- D. cannot be overridden with its own implementation by a derived class

Answer: B

Explanation:

The implementation of a non-virtual method is invariant: The implementation is the same whether the method is invoked on an instance of the class in which it is declared or an instance of a derived class. In contrast, the implementation of a virtual method can be superseded by derived classes. The process of superseding the implementation of an inherited virtual method is known as overriding that method.

NEW QUESTION 52

- (Topic 1)

Class C and Class D inherit from Class B. Class B inherits from Class A. The classes have the methods shown in the following table.

Class	Method
A	m1
B	m2
C	m3
D	m4

All methods have a protected scope.

Which methods does Class C have access to?

- A. only m3, m4
- B. only m2, m3
- C. only m1, m3
- D. m1, m3, m3
- E. m2, m3, m4
- F. m1, m2, m3

Answer: F

NEW QUESTION 57

- (Topic 1)

This question requires that you evaluate the underlined text to determine if it is correct. Arguments are passed to console applications as a Hashtable object.

Select the correct answer if the underlined text does not make the statement correct. Select "No change is needed" if the underlined text makes the statement correct.

- A. No change is needed

- B. String Array
- C. StoredProcedureCollection
- D. Dictionary

Answer: B

Explanation:

Arguments are passed to console applications as a String Array object.

NEW QUESTION 62

- (Topic 1)

Two classes named Circle and Square inherit from the Shape class. Circle and Square both inherit Area from the Shape class, but each computes Area differently. Which term is used to describe this object-oriented concept?

- A. polymorphism
- B. encapsulation
- C. superclassing
- D. overloading

Answer: A

Explanation:

You can use polymorphism to in two basic steps:

Create a class hierarchy in which each specific shape class derives from a common base class.

Use a virtual method to invoke the appropriate method on any derived class through a single call to the base class method.

NEW QUESTION 63

- (Topic 1)

What is displayed when you attempt to access a Web service by using a Web browser?

- A. a listing of methods that are available in the Web service
- B. a directory listing of the Web service's application structure
- C. an error page explaining that you have accessed the Web service incorrectly
- D. a visual depiction of your preliminary connection to the Web service

Answer: A

Explanation:

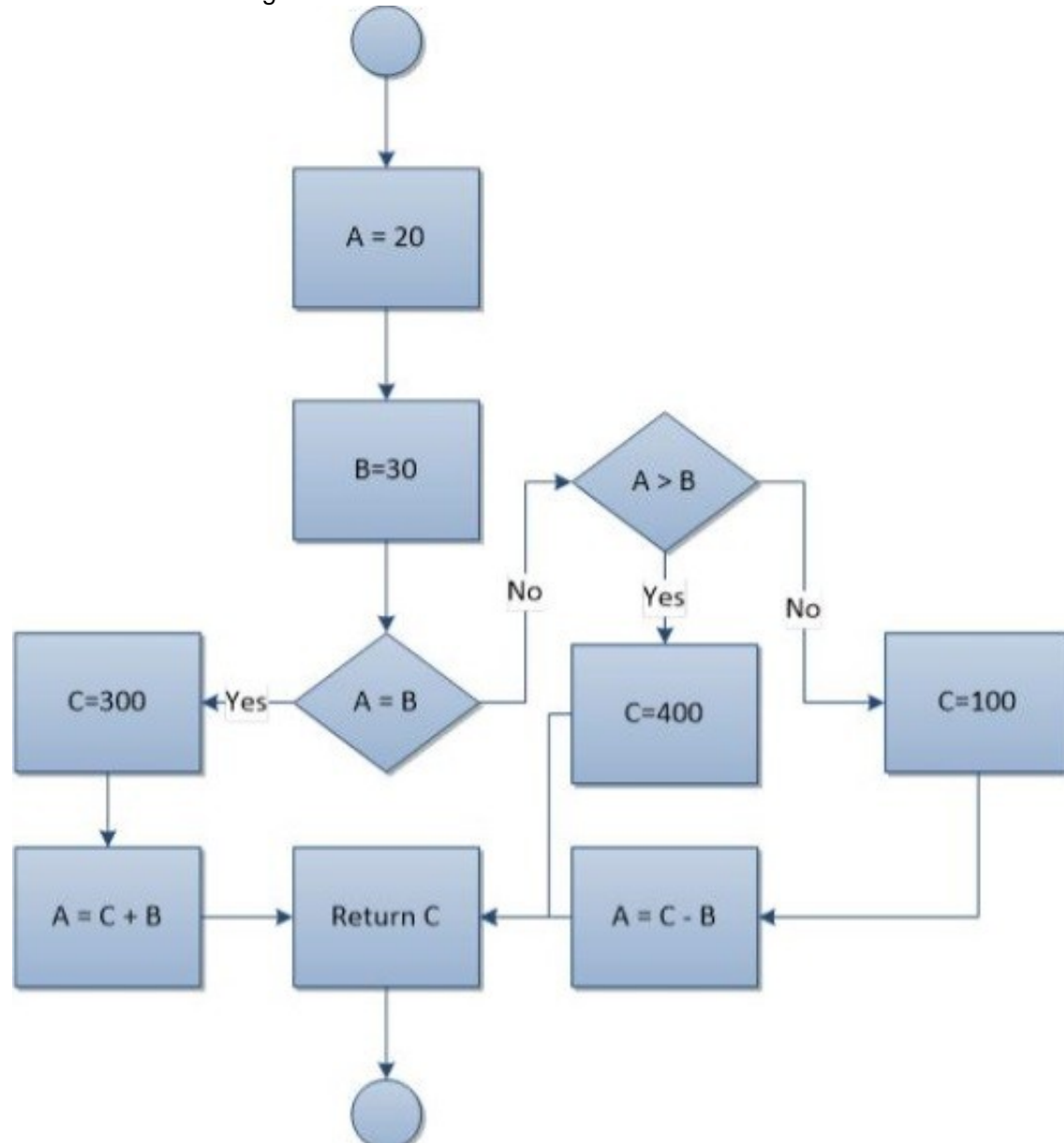
The server, in response to this request, displays the Web service's HTML description page.

The Web service's HTML description page shows you all the Web service methods supported by a particular Web service. Link to the desired Web service method and enter the necessary parameters to test the method and see the XML response.

NEW QUESTION 64

HOTSPOT - (Topic 1)

You have the following flowchart:



Use the drop-down menus to select the answer choice that completes each statement Each correct selection is worth one point.

Answer Area

The value that is returned is [answer choice].

The value of A is [answer choice].

Answer Area

The value that is returned is [answer choice].

20
100
300
400

The value of A is [answer choice].

20
30
70
330

- A. Mastered
- B. Not Mastered

Answer: A

Explanation:

Answer Area

The value that is returned is [answer choice].

20
100
300
400

The value of A is [answer choice].

20
30
70
330

NEW QUESTION 65

- (Topic 1)

In which order do the typical phases of the Software Development Life Cycle occur?

- A. Development, design, requirements gathering, and testing
- B. Design, requirements gathering, development, and testing
- C. Design, development, requirements gathering, and testing
- D. Requirements gathering, design, development, and testing

Answer: D

NEW QUESTION 66

- (Topic 1)

Which term is used to describe a class that inherits functionality from an existing class?

- A. Base class
- B. Inherited class
- C. Derived class
- D. Superclass

Answer: C

Explanation:

Classes (but not structs) support the concept of inheritance. A class that derives from another class (the base class) automatically contains all the public, protected, and internal members of the base class except its constructors and destructors.

NEW QUESTION 67

- (Topic 1)

You need to allow a consumer of a class to modify a private data member. What should you do?

- A. Assign a value directly to the data member.
- B. Provide a private function that assigns a value to the data member.
- C. Provide a public function that assigns a value to the data member.
- D. Create global variables in the class.

Answer: C

Explanation:

In this example (see below), the Employee class contains two private data members, name and salary. As private members, they cannot be accessed except by member methods. Public methods named GetName and Salary are added to allow controlled access to the private members. The name member is accessed by way of a public method, and the salary member is accessed by way of a public read-only property.

Note: The private keyword is a member access modifier. Private access is the least permissive access level. Private members are accessible only within the body of the class or the struct in which they are declared

Example:

```
class Employee2
{
private string name = "FirstName, LastName"; private double salary = 100.0;
public string GetName()
{
return name;
}
public double Salary
{
get { return salary; }
}
}
```

NEW QUESTION 71

- (Topic 1)

Which term is used to describe small units of text that are stored on a client computer and retrieved to maintain state?

- A. trace
- B. cookie
- C. server transfer
- D. cross-page post

Answer: B

Explanation:

HTTP is a stateless protocol. This means that user data is not persisted from one Web page to the next in a Web site. One way to maintain state is through the use of cookies. Cookies store a set of user specific information, such as a reference identifier for a database record that holds customer information.

NEW QUESTION 73

- (Topic 2)

Simulating the final design of an application in order to ensure that the development is progressing as expected is referred to as:

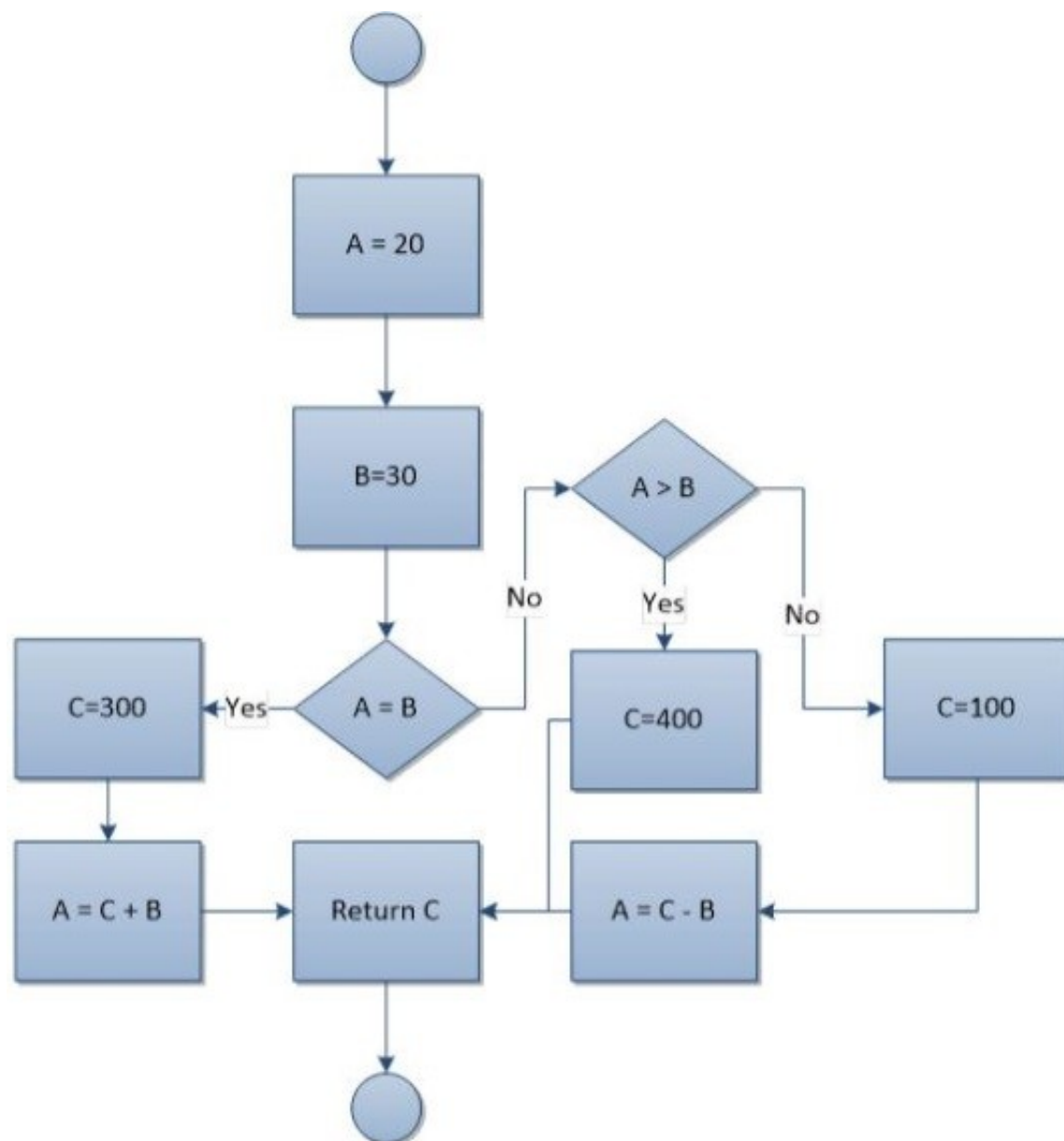
- A. Software testing
- B. Prototyping
- C. Flowcharting
- D. Analyzing requirements

Answer: A

NEW QUESTION 76

HOTSPOT - (Topic 2)

You have the following flowchart:



Use the drop-down menus to select the answer choice that completes each statement Each correct selection is worth one point.

Answer Area

The value that is returned is [answer choice].

The value of A is [answer choice].

Answer Area

The value that is returned is [answer choice].

- 20
- 100
- 300
- 400

The value of A is [answer choice].

- 20
- 30
- 70
- 330

- A. Mastered
 B. Not Mastered

Answer: A

Explanation:

Answer Area

The value that is returned is [answer choice].

- 20
- 100
- 300
- 400

The value of A is [answer choice].

- 20
- 30
- 70
- 330

NEW QUESTION 80

HOTSPOT - (Topic 2)

You are reviewing the following class that is used to manage the results of a 5K race:

```
Public Class Player
    Private _name As String
    Public Const Key As String = "player"

    Private _ranking As Integer
    Public Property Ranking() As Integer
        Get
            Return _ranking
        End Get
        Private Set(value As Integer)
            _ranking = value
        End Set
    End Property

    Public Function MatchName(searchTerm As String) As Boolean
        Return _name.ToLower() = searchTerm
    End Function

    Public Sub SetResult(rank As Integer, name As String)
        If (Not IsNothing(_name)) Then
            Return
        End If

        Ranking = rank
        _name = name
    End Sub
End Class
```

For each of the following statements, select Yes if the statement is true. Otherwise, select No. Each correct selection is worth one point.

Answer Area

Description of Behavior	Yes	No
You can only set the player’s ranking once.	<input type="radio"/>	<input type="radio"/>
If you call the MatchName method, the code will throw an exception.	<input type="radio"/>	<input type="radio"/>
You can change Key from “player” to “racer”.	<input type="radio"/>	<input type="radio"/>

- A. Mastered
- B. Not Mastered

Answer: A

Explanation:

Answer Area

Description of Behavior	Yes	No
You can only set the player’s ranking once.	<input checked="" type="radio"/>	<input type="radio"/>
If you call the MatchName method, the code will throw an exception.	<input checked="" type="radio"/>	<input type="radio"/>
You can change Key from “player” to “racer”.	<input type="radio"/>	<input checked="" type="radio"/>

NEW QUESTION 83

- (Topic 2)

This question requires that you evaluate the underlined text to determine if it is correct.

When creating a site to utilize message queuing, the "IP address" must be configured to MSMQ.

Select the correct answer if the underlined text does not make the statement correct. Select "No change is needed" if the underlined text makes the statement correct.

- A. No change is needed
- B. protocol
- C. host header
- D. port

Answer: B

Explanation:

MSMQ is a messaging protocol that allows applications running on separate servers/processes to communicate in a failsafe manner.

NEW QUESTION 84

- (Topic 2)

What are two methods that can be used to evaluate the condition of a loop at the start of each iteration? (Each correct answer presents a complete solution. Choose two.)

- A. For
- B. D
- C. . . While
- D. If
- E. While

Answer: AD

Explanation:

For and While constructs check at the start of each iteration.

NEW QUESTION 88

- (Topic 2)

What are the three basic states that a Windows service can be in? (Choose three.)

- A. running
- B. starting
- C. halted
- D. stopped
- E. paused

Answer: BDE

Explanation:

A service can exist in one of three basic states: Running, Paused, or Stopped.

NEW QUESTION 91

- (Topic 2)

How should you configure an application to consume a Web service?

- A. Add the Web service to the development computer.
- B. Add a reference to the application in the Web service.
- C. Add a reference to the Web service in the application.
- D. Add the Web service code to the application.

Answer: C

Explanation:

Start by adding a Service Reference to the project. Right-click the ConsoleApplication1 project and choose ??Add Service Reference??:

NEW QUESTION 94

- (Topic 2)

All objects in .NET inherit from which item?

- A. a reference type
- B. the System.Type class
- C. a value type
- D. the System.Object class

Answer: D

Explanation:

The System.Object class supports all classes in the .NET Framework class hierarchy and provides low-level services to derived classes. This is the ultimate base class of all classes in the .NET Framework; it is the root of the type hierarchy.

NEW QUESTION 98

- (Topic 2)

Two classes named Circle and Square inherit from the Shape class. Circle and Square both inherit Area from the Shape class, but each computes Area differently. Which term is used to describe this object-oriented concept?

- A. encapsulation
- B. superclassing
- C. polymorphism
- D. overloading

Answer: C

Explanation:

You can use polymorphism to in two basic steps:

Create a class hierarchy in which each specific shape class derives from a common base class.

Use a virtual method to invoke the appropriate method on any derived class through a single call to the base class method.

NEW QUESTION 100

- (Topic 2)

Which type of Windows application presents a parent window that contains child windows?

- A. Multiple-document interface (MDI)
- B. Command-line interface (CLI)
- C. Single-document interface (SDI)
- D. Application programming interface (API)

Answer: A

Explanation:

A multiple document interface (MDI) is a graphical user interface in which multiple windows reside under a single parent window. Such systems often allow child windows to embed other windows inside them as well, creating complex nested hierarchies. This contrasts with single document interfaces (SDI) where all windows are independent of each other.

NEW QUESTION 102

- (Topic 2)

You are developing a webpage that enables students to manage races.

The webpage will display two lists: past races and upcoming races. The page also contains a sidebar with contact information and a panel with social media settings that can be edited. Race results can be shared on social media.

How many components will be on the webpage?

- A. 2
- B. 3
- C. 4
- D. 5

Answer: C

NEW QUESTION 107

- (Topic 2)

You have a website that includes a form for username and password.

You need to ensure that users enter their username and password. The validation must work in all browsers.

Where should you put the validation control?

- A. in the Web.config file
- B. in the server-side code only
- C. in the client-side code only

D. in both the client-side code and the server-side code

Answer: D

Explanation:

From version 2.0 on, ASP.NET recognized the JavaScript capabilities of these browsers, so client-side validation is now available to all modern browsers, including Opera, Firefox, and others. Support is even better now in ASP.NET 4.0. That said, it's important not to forget that JavaScript can be disabled in any browser, so client-side validation cannot be relied upon—we must always validate any submitted data on the server.

NEW QUESTION 110

- (Topic 2)

What are two advantages of normalization in a database? (Choose two.)

- A. reduces schema limitations
- B. minimizes impact of data corruption
- C. decreases space used on disk
- D. prevents data inconsistencies

Answer: CD

NEW QUESTION 111

- (Topic 2)

A class named Manager is derived from a parent class named Employee. The Manager class includes characteristics that are unique to managers. Which term is used to describe this object-oriented concept?

- A. inheritance
- B. data modeling
- C. data hiding
- D. encapsulation

Answer: A

Explanation:

Classes (but not structs) support the concept of inheritance. A class that derives from another class (the base class) automatically contains all the public, protected, and internal members of the base class except its constructors and destructors.

Incorrect:

not D: Encapsulation is sometimes referred to as the first pillar or principle of object-oriented programming. According to the principle of encapsulation, a class or struct can specify how accessible each of its members is to code outside of the class or struct. Methods and variables that are not intended to be used from outside of the class or assembly can be hidden to limit the potential for coding errors or malicious exploits.

NEW QUESTION 112

- (Topic 2)

Which function does Simple Object Access Protocol (SOAP) provide when using Web services?

- A. communications protocol
- B. model for describing Web services
- C. directory of registered Web services
- D. security model

Answer: :A

Explanation:

SOAP, originally defined as Simple Object Access Protocol, is a protocol specification for exchanging structured information in the implementation of web services in computer networks. It relies on XML Information Set for its message format, and usually relies on other application layer protocols, most notably Hypertext Transfer Protocol (HTTP) or Simple Mail Transfer Protocol (SMTP), for message negotiation and transmission.

NEW QUESTION 115

- (Topic 2)

You execute the following code.

```
For i = 0 to 100
    If I Mod 2 <> 0 Then
        Console.WriteLine("Hello")
    End If
Next
```

How many times will the word Hello be printed?

- A. 49
- B. 50
- C. 51
- D. 100

Answer: B

Explanation:

The mod operator computes the remainder after dividing its first operand by its second. All numeric types have predefined remainder operators. In this case the remainder will be nonzero 50 times (for i with values 1, 3, 5,...,99).

NEW QUESTION 117

- (Topic 2)

How many parameters can a default constructor have?

- A. 1
- B. 2
- C. 3 or more

Answer: :A

Explanation:

If a class contains no instance constructor declarations, a default instance constructor is automatically provided. That default constructor simply invokes the parameterless constructor of the direct base class.

NEW QUESTION 118

- (Topic 2)

What does the Console.Error property do within a console-based application?

- A. sets the standard error output stream
- B. gets the standard error input stream
- C. sets the standard error input stream
- D. gets the standard error output stream

Answer: D

Explanation:

The Console.Error property gets the standard error output stream.

NEW QUESTION 123

- (Topic 2)

You need to group all the style settings into a separate file that can be applied to all the pages in a Web application.

What should you do?

- A. Use a Cascading Style Sheet (CSS).
- B. Use an Extensible Markup Language (XML) schema.
- C. Use inline styles.
- D. Use a WebKit.

Answer: A

Explanation:

Cascading Style Sheets (CSS) is a style sheet language used for describing the look and formatting of a document written in a markup language.

CSS is designed primarily to enable the separation of document content from document presentation, including elements such as the layout, colors, and fonts.

NEW QUESTION 127

- (Topic 2)

Which type of function can a derived class override?

- A. A Protected Overridable member function
- B. A Shared function
- C. A Private Overridable function
- D. A non-overridable public member function

Answer: A

Explanation:

The Overridable modifier allows a property or method in a class to be overridden in a derived class.

You cannot specify Overridable on a Private method.

NEW QUESTION 130

- (Topic 2)

Which three phrases are advantages of connection pooling? (Choose three.)

- A. reduces load on the server
- B. improved performance
- C. reduces time to create a connection
- D. requires no configuration
- E. improved scalability

Answer: BCE

Explanation:

B: In connection pooling, after a connection is created, it is placed in the pool and it is used over again so that a new connection does not have to be established.

E: Connection pooling often improves application performance, concurrency and scalability.

C: Connection pooling also cuts down on the amount of time a user must wait to establish a connection to the database.

NEW QUESTION 134

- (Topic 2)

You have a class named Truck that inherits from a base class named Vehicle. The Vehicle class includes a protected method named brake (). How should you call the Truck Class implementation of the brake () method?

- A. MyBase.brake ()
- B. Truck.brakef)
- C. Vehicle.brake()
- D. Me.brake ()

Answer: A

Explanation:

The MyBase keyword behaves like an object variable referring to the base class of the current instance of a class. MyBase is commonly used to access base class members that are overridden or shadowed in a derived class.

NEW QUESTION 138

- (Topic 2)

This question requires that you evaluate the underlined text to determine if it is correct. The default entry point for a console application is the Class method. Select the correct answer if the underlined text does not make the statement correct. Select "No change is needed" if the underlined text makes the statement correct.

- A. No change is needed
- B. Main
- C. Program
- D. Object

Answer: B

Explanation:

The default entry point for a console application is the Class Main.

NEW QUESTION 140

- (Topic 2)

The purpose of the Catch section in an exception handler is to:

- A. Conclude the execution of the application.
- B. Break out of the error handler.
- C. Execute code only when an exception is thrown.
- D. Execute code regardless of whether an exception is thrown.

Answer: C

NEW QUESTION 145

- (Topic 2)

You execute the following code.

```
Dim beakerFull As Boolean = True
Dim flameOn As Boolean = False
Dim iResult As Integer = 0
```

```
If beakerFull = True Then
    If flameOn = True Then
        iResult = 1
    Else
        iResult = 2
    End If
Else
    iResult = 3
End If
```

What will the variable result be?

- A. 1
- B. 2
- C. 3

Answer: C

NEW QUESTION 147

- (Topic 2)

This question requires that you evaluate the underlined text to determine if it is correct. The Response.Redirect method is used to transfer processing of the current page to a new page, and then return processing back to the calling page once processing of the new page has completed.

Select the correct answer if the underlined text does not make the statement correct. Select "No change is needed" if the underlined text makes the statement correct.

- A. No change is needed
- B. Server.Transfer method
- C. Server.Execute method
- D. meta http-equiv="refresh" tag

Answer: C

Explanation:

The Execute method calls an .asp file, and processes it as if it were part of the calling ASP script. The Execute method is similar to a procedure call in many programming languages.

Incorrect:

* Response.Redirect Method

The Redirect method causes the browser to redirect the client to a different URL.

* The Server.Transfer method sends all of the information that has been assembled for processing by one .asp file to a second .asp file.

NEW QUESTION 151

- (Topic 2)

Where must Internet Information Services (IIS) be installed in order to run a deployed ASP. NET application?

- A. on the computer that you plan to deploy from
- B. on the client computers
- C. on the computer that hosts the application
- D. on the Application Layer Gateway Service

Answer: C

Explanation:

IIS is run on the web server. The web server is hosting the application.

NEW QUESTION 154

HOTSPOT - (Topic 2)

For each of the following statements, select Yes if the statement is true. Otherwise, select No. Each correct selection is worth one point.

Answer Area

Description of Behavior	Yes	No
An entity relationship diagram (ERD) is designed for an object-oriented database.	<input type="radio"/>	<input type="radio"/>
An entity relationship diagram (ERD) contains entities, relationships, and attributes.	<input type="radio"/>	<input type="radio"/>
Cardinality refers to how one table is linked to another table; as one-to-many.	<input type="radio"/>	<input type="radio"/>

- A. Mastered
- B. Not Mastered

Answer: A

Explanation:

Answer Area

Description of Behavior	Yes	No
An entity relationship diagram (ERD) is designed for an object-oriented database.	<input type="radio"/>	<input checked="" type="radio"/>
An entity relationship diagram (ERD) contains entities, relationships, and attributes.	<input checked="" type="radio"/>	<input type="radio"/>
Cardinality refers to how one table is linked to another table; as one-to-many.	<input checked="" type="radio"/>	<input type="radio"/>

NEW QUESTION 157

- (Topic 2)

What is displayed when you attempt to access a Web service by using a Web browser?

- A. a visual depiction of your preliminary connection to the Web service
- B. a listing of methods that are available in the Web service
- C. an error page explaining that you have accessed the Web service incorrectly
- D. a directory listing of the Web services application structure

Answer: B

Explanation:

The server, in response to this request, displays the Web service's HTML description page.

The Web service's HTML description page shows you all the Web service methods supported by a particular Web service. Link to the desired Web service method and enter the necessary parameters to test the method and see the XML response.

NEW QUESTION 161

- (Topic 2)

Your database administrators will not allow you to write SQL code in your application. How should you retrieve data in your application?

- A. Reference an index in the database.
- B. Call a stored procedure.
- C. Query a database view.
- D. Script a SELECT statement to a file.

Answer: B

Explanation:

The SQL will only be inside the stored procedure.

NEW QUESTION 162

DRAG DROP - (Topic 2)

You are developing an application to display track and field race results.

The application must display the race results twice. The first time it must display only the winner and runner-up. The second time it must display all participants.

The code used to display results is shown below.

```
Public Sub Display()  
    For Each ranking In Rankings(True)  
        DisplayName(ranking)  
    Next  
  
    For Each ranking In Rankings(False)  
        Displayname(ranking)  
    Next  
End Sub
```

You need to implement the Rankings() function.

Complete the function to meet the requirements. (To answer, drag the appropriate code segment from the column on the left to its location on the right. Each code segment may be used once, more than once, or not at all. Each correct match is worth one point.)

Code Segments	Answer Area
<div>Exit For</div>	<pre>Private Iterator Function Rankings(top2Only As Boolean) _ As IEnumerable(Of String) Code Segment "John" Code Segment "Nancy" If (top2Only) Then Code Segment End If Code Segment "Chris" End Function</pre>
<div>Exit Function</div>	
<div>Return</div>	
<div>Yield</div>	

- A. Mastered
- B. Not Mastered

Answer: A

Explanation:

Code Segments	Answer Area
<div>Exit For</div>	<pre>Private Iterator Function Rankings(top2Only As Boolean) _ As IEnumerable(Of String) Yield "John" Yield "Nancy" If (top2Only) Then Exit Function End If Yield "Chris" End Function</pre>
<div>Exit Function</div>	
<div>Return</div>	
<div>Yield</div>	

NEW QUESTION 167

- (Topic 2)

You need to create a stored procedure that passes in a person's name and age. Which statement should you use to create the stored procedure?

A. `UPDATE PROCEDURE StoreData
@UserName nvarchar(255),
@Age int`

B. `CREATE PROCEDURE StoreData
@UserName char,
@Age double`

C. `CREATE PROCEDURE StoreData
@UserName nvarchar(255),
@Age int`

D. `CREATE PROCEDURE StoreData (@UserName, @Age)`

- A. Option A
- B. Option B
- C. Option C
- D. Option D

Answer: C

Explanation:

Example (nvarchar and int are best here):

The following example creates a stored procedure that returns information for a specific

employee by passing values for the employee's first name and last name. This procedure accepts only exact matches for the parameters passed.

```
CREATE PROCEDURE HumanResources.uspGetEmployees
```

```
@LastName nvarchar(50),
```

```
@FirstName nvarchar(50) AS
```

```
SET NOCOUNT ON;
```

```
SELECT FirstName, LastName, JobTitle, Department FROM HumanResources.vEmployeeDepartment
```

```
WHERE FirstName = @FirstName AND LastName = @LastName; GO
```

NEW QUESTION 170

- (Topic 2)

You have a SQL Server database named MyDB that uses SQL Server Authentication. Which connection string should you use to connect to MyDB?

A. Data Source=MyDB; Integrated Security=SSPf; Initial Catalog=Sales

B. Data Source=MyDB; Trusted_Connection=True; MultipleActiveResultSets=True; Initial Catalog=Sales

C. Data Source=MyDB; Integrated Security=True; Initial Catalog=Sales

D. Data Source=MyDB; UserID=username; Password=P@sswOrd; Initial Catalog=Sales

Answer: D

Explanation:

Integrated Security Integrated Security is by default set to false.

When false, User ID and Password are specified in the connection.

Incorrect:

not C: Windows Authentication (Integrated Security = true) remains the most secure way to log in to a SQL Server database.

NEW QUESTION 172

- (Topic 2)

You need to debug a Windows Service application by using breakpoints. What should you do?

A. Write all events to an event log.

B. Set the Windows Service status to Paused.

C. Implement the Console.WriteLine method throughout the Windows Service.

D. use the Attach to Process menu in Microsoft Visual Studio.

Answer: D

Explanation:

* Because a service must be run from within the context of the Services Control Manager rather than from within Visual Studio, debugging a service is not as straightforward as debugging other Visual Studio application types. To debug a service, you must start the service and then attach a debugger to the process in which it is running.

* To debug a service Install your service.

Start your service, either from Services Control Manager, Server Explorer, or from code. In Visual Studio, choose Attach to Process from the Debug menu.

Etc.

NEW QUESTION 174

- (Topic 2)

You have a Windows Service running in the context of an account that acts as a non- privileged user on the local computer. The account presents anonymous credentials to any remote server.
What is the security context of the Windows Service?

- A. Local System
- B. NetworkService
- C. user
- D. LocalService

Answer: D

Explanation:
LocalService, which runs in the context of an account that acts as a non- privileged user on the local computer, and presents anonymous credentials to any remote server;

NEW QUESTION 179

- (Topic 2)
You have a class named Glass that inherits from a base class named Window. The Window class includes a protected method named break().
How should you call the Glass class implementation of the break() method?

- A. Glass.break()
- B. Window.break()
- C. Me.break()
- D. MyBase.break()

Answer: B

NEW QUESTION 181

HOTSPOT - (Topic 2)
You have a base class named Tree with a friend property named color and a protected property named NumberOfLeaves. In the same project, you also have a class named Person.
For each of the following statements, select Yes if the statement is true. Otherwise, select No. Each correct selection is worth one point.

Answer Area

Description of Behavior	Yes	No
Methods in the Person class can access the color property.	<input type="radio"/>	<input type="radio"/>
Methods in the Person class can access the NumberOfLeaves property.	<input type="radio"/>	<input type="radio"/>
Methods in the Tree class can access all private properties in Person.	<input type="radio"/>	<input type="radio"/>

- A. Mastered
- B. Not Mastered

Answer: A

Explanation:
Answer Area

Description of Behavior	Yes	No
Methods in the Person class can access the color property.	<input checked="" type="radio"/>	<input type="radio"/>
Methods in the Person class can access the NumberOfLeaves property.	<input type="radio"/>	<input checked="" type="radio"/>
Methods in the Tree class can access all private properties in Person.	<input type="radio"/>	<input checked="" type="radio"/>

NEW QUESTION 183

.....

Relate Links

100% Pass Your 98-361 Exam with ExamBible Prep Materials

<https://www.exambible.com/98-361-exam/>

Contact us

We are proud of our high-quality customer service, which serves you around the clock 24/7.

Viste - <https://www.exambible.com/>