



Cisco

Exam Questions 352-001

CCDE Written Exam

NEW QUESTION 1

Which load balancing option for IP-only traffic is the least efficient in terms of EtherChannel physical links utilization?

- A. On a per source IP address basis
- B. On a per destination MAC address basis
- C. On a per destination IP address basis
- D. On a per port number basis

Answer: B

NEW QUESTION 2

Company ABC is using an Ethernet virtual circuit as its provider's DCI solution. A goal is to reduce the time to detect the link failure. Which protocol accomplishes this goal?

- A. UDLD
- B. Spanning tree bridge assurance
- C. Link aggregation group
- D. Ethernet OAM

Answer: D

NEW QUESTION 3

What is an implication of using route reflectors in an iBGP topology?

- A. Route reflection limits the total number of iBGP routers.
- B. Route reflection causes traffic to flow in a hub-and-spoke fashion.
- C. The manipulation of BGP attributes is not supported on the other routers than the route reflectors.
- D. Route reflectors can create routing loops when more than one router reflector is used in the same cluster.
- E. Multipath information is difficult to propagate in a route reflector topology.

Answer: E

NEW QUESTION 4

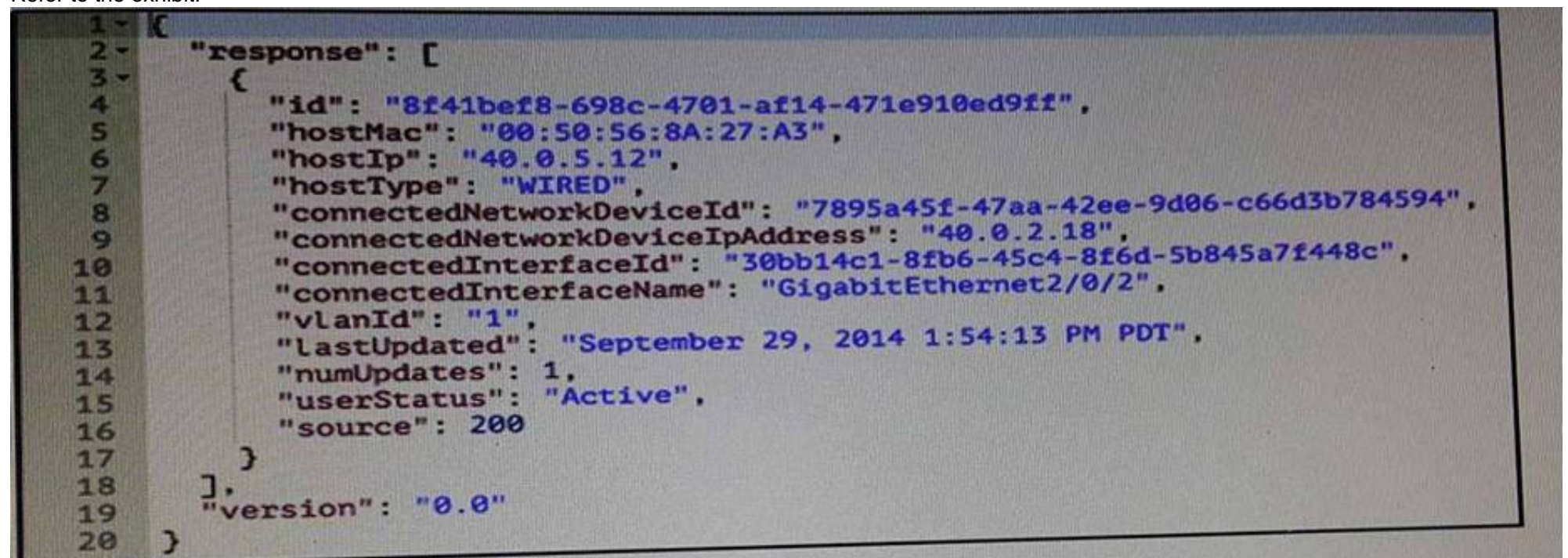
What are two benefits of following a structured hierarchical and modular design? (Choose two.)

- A. Each component can be designed independently for its role.
- B. Each component can be managed independently based on its role.
- C. Each component can be funded by different organizations based on its role.
- D. Each component can support multiple roles based on the requirements.
- E. Each component can provide redundancy for applications and services.

Answer: AB

NEW QUESTION 5

Refer to the exhibit.



```
1 {
2   "response": [
3     {
4       "id": "8f41bef8-698c-4701-af14-471e910ed9ff",
5       "hostMac": "00:50:56:8A:27:A3",
6       "hostIp": "40.0.5.12",
7       "hostType": "WIRED",
8       "connectedNetworkDeviceId": "7895a45f-47aa-42ee-9d06-c66d3b784594",
9       "connectedNetworkDeviceIpAddress": "40.0.2.18",
10      "connectedInterfaceId": "30bb14c1-8fb6-45c4-8f6d-5b845a7f448c",
11      "connectedInterfaceName": "GigabitEthernet2/0/2",
12      "vlanId": "1",
13      "lastUpdated": "September 29, 2014 1:54:13 PM PDT",
14      "numUpdates": 1,
15      "userStatus": "Active",
16      "source": 200
17    }
18  ],
19  "version": "0.0"
20 }
```

Which data format is used in this REST API call?

- A. JSON
- B. HTMLv5
- C. HTML
- D. XML
- E. BASH

Answer: A

NEW QUESTION 6

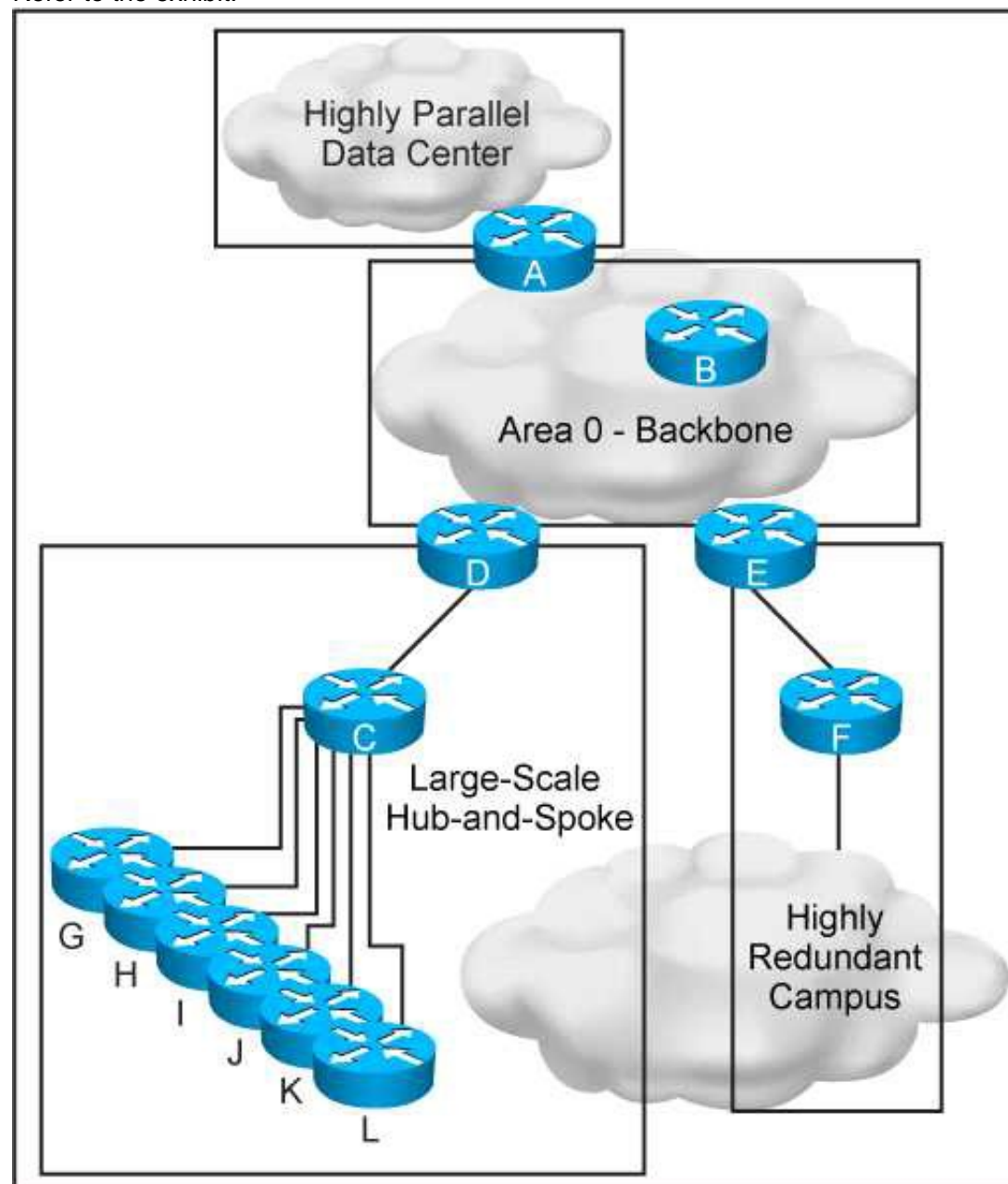
Which major block is not included in the ETSI network Function Virtualization reference framework?

- A. Network Function Virtualization Infrastructure
- B. Network Function Virtualization Management and Orchestration
- C. Network Function Virtualization Policy Manager
- D. Virtualized Network Function/ Element Management Systems

Answer: C

NEW QUESTION 7

Refer to the exhibit.



This new OSPF network has four areas, but the hub-and-spoke area experiences frequent flapping. In order to fix this design failure, which two mechanisms can you use to isolate the data center area from the hub-and-spoke area without losing Ip connectivity? (Choose two)

- A. Use OSPF distribute-list filtering on router A
- B. Deploy a prefix summarization on router D
- C. Make the data center area a NSSA
- D. Make the data center area totally stub
- E. Convert the data center area to EIGRP protocol

Answer: BD

NEW QUESTION 8

Which IEEE standard is commonly used at the data link layer for an access network, in an IoT environment?

- A. Wireless Regional Area Network
- B. Low-Rate Wireless Network
- C. Wireless Local Area Network
- D. Broadband wireless metropolitan Network

Answer: B

NEW QUESTION 9

Which feature or technology that affects the operations of IPsec should be taken into account when designing an IPsec network using Authentication header?

- A. TCP MSS adjustment
- B. Certificate-based authentication
- C. Transform set
- D. NAT

Answer: D

NEW QUESTION 10

A regional ISP is running MPLS TE. These tunnels are configured manually using paths. Which technology centralizes the traffic engineering decisions to reduce operational complexity?

- A. BGP Link State
- B. DiffServ-TE
- C. TE autobandwidth
- D. Shared Risk link Group

Answer: C

NEW QUESTION 10

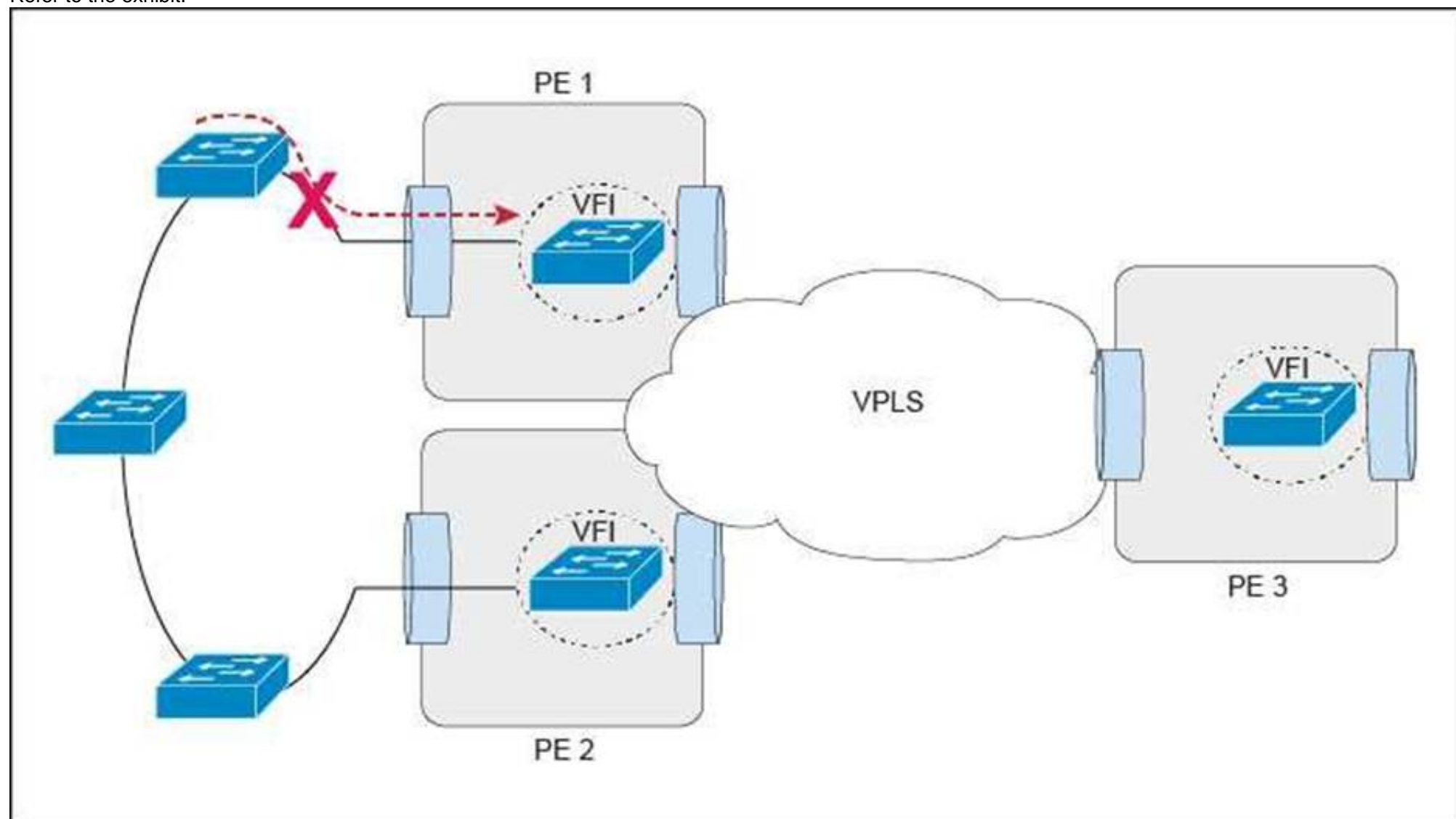
In which two ways is a network design improved by including IP Event Dampening? (Choose two)

- A. Provides sub-second convergence
- B. Quickly detects network failures
- C. Prevent routing loops
- D. Improves network stability
- E. Reduces processing load

Answer: DE

NEW QUESTION 12

Refer to the exhibit.



This Layer 2 ring has 10 VLANs with 1000 MAC addresses in each VLAN. Which protocol or mechanism provides the shortest traffic outage if the link marked with "X" fails?

- A. Ethernet linear protection switching
- B. PVRST
- C. MST
- D. Ethernet ring protection switching

Answer: D

NEW QUESTION 14

An operations engineer asks for your help with a new switching deployment. The engineer confirms that STP is enabled on an edge switch, and a particular port is connected to another switch. The switch is not receiving configuration BPDUs, although it appears that everything is functioning correctly in the network. What is the design explanation?

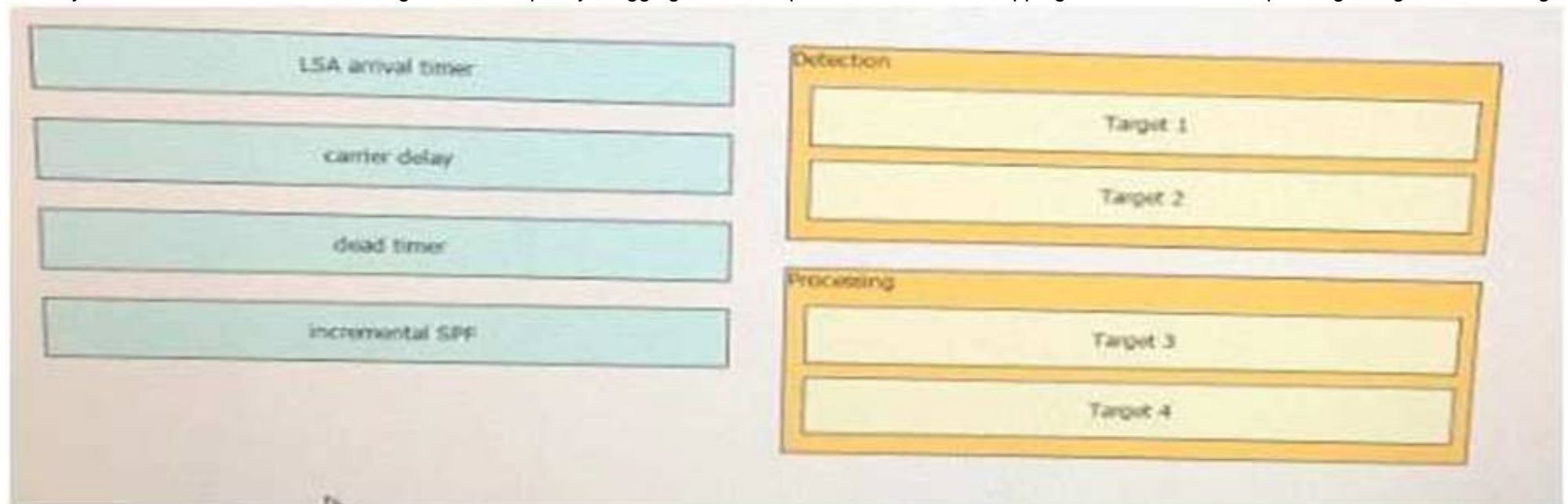
- A. Bridge Assurance is enabled on the port
- B. Storm control broadcast is enabled on the port
- C. REP is enabled on the port
- D. BPDU Guard is enabled on the port

Answer: C

NEW QUESTION 15

DRAG DROP

Classify the OSPF Fast Network Convergence technique by dragging the techniques on the left and dropping them into the corresponding categories on the right.



- A. Mastered
- B. Not Mastered

Answer: A

Explanation:

Detection: carrier delay, dead timer

Processing: LSA arrival timer, incremental SPF

NEW QUESTION 17

Which option is a design consideration when using routers in a distributed hardware architecture?

- A. Routing information is stored in the RIB and the FIB makes forwarding decisions as programmed on the line card hardware
- B. After a link failure occurs in the core, the RIB continues to forward the traffic while FIB convergence is in progress
- C. BGP routes are stored in the RIB and IGP routes are stored in the FIB
- D. IP routes are stored in the RIB and MPLS labels are stored in the FIB

Answer: A

NEW QUESTION 20

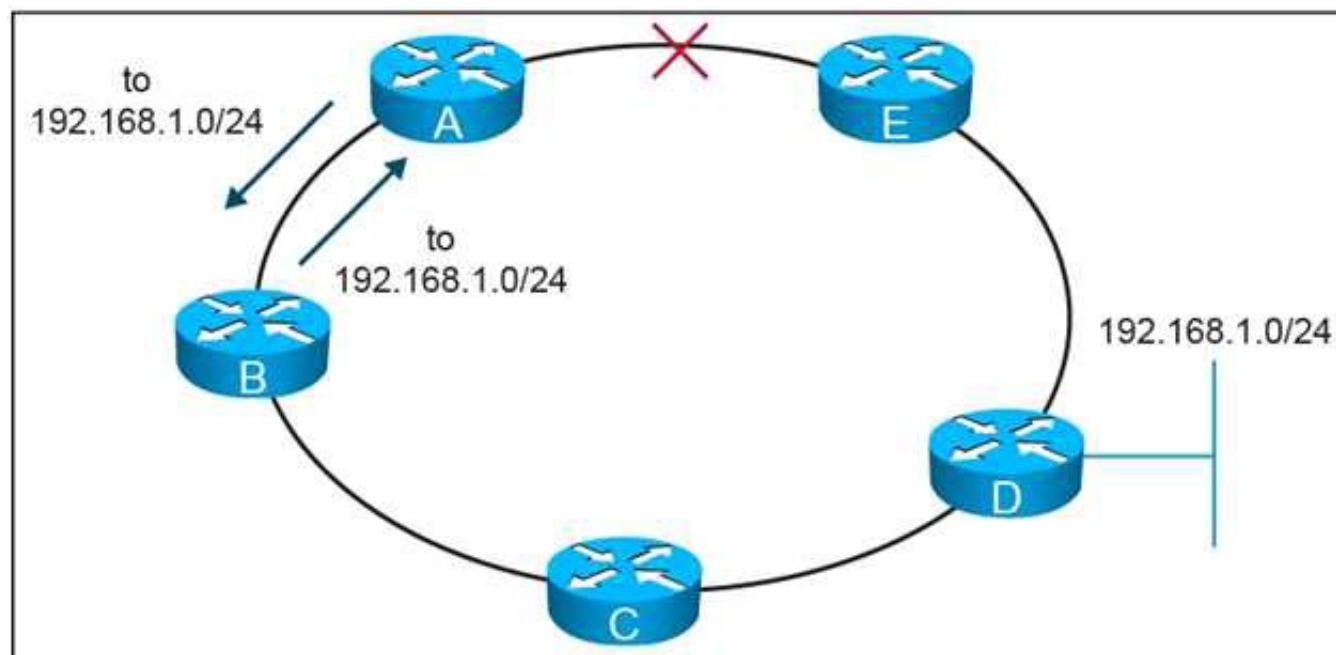
Which two functions are performed at the core layer of the three-layer hierarchical network design model? (Choose two).

- A. Fault isolation
- B. Qos classification and marking boundary
- C. Fast transport
- D. Reliability
- E. Load balancing

Answer: CD

NEW QUESTION 21

Refer to the exhibit.



On this MPLS-based network ring, links have failed between router A and router E. These failures formed microloops while the network converged, when A forwarded traffic to B but B forwards it back to

- A. Which technology is the simplest solution to avoid microloops without enabling a new protocol in the network?
- B. TE Fast ReRoute
 - C. IP Fast ReRoute
 - D. Loop-Free Alternate
 - E. Remote Loop-Free Alternate

Answer: D

NEW QUESTION 22

Which two techniques are used in an OSPF network design to slow down the distribution of topology information caused by a rapidly flapping link? (Choose two)

- A. LSA throttling
- B. SPF throttling
- C. IP event dampening
- D. Link-state incremental SPF
- E. Link-state partial SPF

Answer: AC

NEW QUESTION 24

There is an MPLS-enabled link constantly flapping on an MPLS VPN network. Given that the network runs OSPF as the IGP protocol, which design mechanism will stabilize the network and avoid constant re-convergence?

- A. IP Event Dampening
- B. OSPF fast hellos
- C. IP SLA
- D. Partial SPF

Answer: A

NEW QUESTION 25

A financial trading organization plans to monitor the network latency for multicast data feeds on a hop-by-hop basis. Which technology should be added to their design to support this requirement?

- A. SPAN
- B. NBAR
- C. IPFIX
- D. Precision Time Protocol

Answer: D

NEW QUESTION 30

You are implementing a one-to-many multicast solution for a large service provider network. Which technology offers optimal routing of multicast traffic?

- A. PIM sparse mode
- B. PIM SSM
- C. Anycast RP
- D. MSDP
- E. Bidirectional PIM.

Answer: B

NEW QUESTION 35

A network designer wants to improve a company network design due to multiple network crashes. Which technology would allow for the restore of a network connection without informing the Layer 3 protocol?

- A. Bidirectional Forwarding Detection
- B. automatic protection switching
- C. UDLD
- D. Ethernet OAM

Answer: B

NEW QUESTION 36

Which two components are the responsibility of the customers in a platform as a Service offering? (Choose two)

- A. Applications
- B. Infrastructure connectivity
- C. Hardware
- D. Data
- E. APIs

Answer: AD

NEW QUESTION 38

A data center provider has designed a network using these requirements

Two data center sites are connected to the public internet

Both data centers are connected to different Internet providers

Both data centers are also directly connected with a private connection for the internal traffic can also be at this direct connection The data center provider has only /19 public IP address block

Under normal conditions, Internet traffic should be routed directly to the data center where the services are located. When one Internet connections fails to complete traffic for both data centers should be routed by using the remaining Internet connection in which two ways can this routing be achieved? (Choose two)

- A. One /20 block is used for the first data center and the second /20 block is used for the second data center
- B. The /20 block from the local data center is sent out without path prepending and the /20 block from the remote data center is sent out with path prepending at both sites
- C. One /20 block is used for the first data center and the second /20 block is used for the second data center
- D. Each /20 block is only sent out locally
- E. The /19 block is sent out at both Internet connections for the backup case to reroute the traffic through the remaining internet connection
- F. One /20 block is used for the first data center and the second /20 block is used for the second data center
- G. The /20 block from the local data center is sent out with a low BGP local preference and the /20 block from the remote data center is sent out with a higher BGP local preference of both sites
- H. BGP will always load-balance the traffic to both data center sites
- I. One /20 block is used for the first data center and the second /20 block is used for the second data center
- J. The /20 block from the local data center is sent out with a low BGP weight and the /20 block from the remote data center is sent out with a higher BGP weight at both sites
- K. The data center provider must have an additional public IP address block for this routing

Answer: AB

NEW QUESTION 41

You are designing a WAN network solution with EIGRP based on VPLS. The interface speed is 10Mb/s,

but the access rate of the WAN connection is 256 Kb/s. What should you include in the network design, in order to avoid potential issues with EIGRP?

- A. Limit EIGRP traffic to the access rate with a policer.
- B. Tag outbound EIGRP traffic and have the WAN provider add it to the priority queue.
- C. Limit traffic to the access rate with interface traffic shaping.
- D. Set the interface bandwidth to match the access rate.

Answer: D

NEW QUESTION 44

Your customer asks you to assist with their traffic policy design. They want to guarantee a minimum amount of bandwidth to certain traffic classes. Which technique would you advise them to implement?

- A. Modular QoS CLI
- B. committed access Rate
- C. policy-based routing
- D. traffic shaping

Answer: A

NEW QUESTION 49

A company would like to distribute a virtual machine (VM) hosting cluster between three data centers with the capability to move VMs between sites. The connectivity between data centers is IP only and the new design should use the existing WAN. Which Layer 2 tunneling technology do you recommend?

- A. ATOM
- B. L2TPv3
- C. OTV
- D. VPLS

Answer: C

NEW QUESTION 52

You are presented with requirements to design a development, testing and production environments. These environment should communicate with each other, yet they should be kept as separate failure domains. Which routing protocol should be configured on the links between the networks to support the design requirements?

- A. OSPF
- B. EIGRP
- C. IS-IS
- D. BGP

Answer: D

NEW QUESTION 56

Which multicast technology provides a large, many-to-many connectivity for a new application while minimizing load on the existing network infrastructure?

- A. PIM Sparse Mode
- B. Bidirectional PIM
- C. Any-Source Multicast
- D. Source Specific Multicast

Answer: B

NEW QUESTION 60

You are consultant network designer for a large GET VPN deployment for a large bank with International coverage. Between 1800 and 2000 remote locations connect to the central location through four hubs using an MPLS backbone and using two keys servers. The bank is concerned with security and replay attacks. Which two actions should you use to tune the GET VPN to meet the bank requirements? (Choose two)

- A. Increase the cryptographic key size.
- B. Replace unicast rekey with multicast rekey.
- C. Reduce the SAR clock interval duration
- D. Increase the TEK and KEK lifetime.
- E. Reduce the Dead Peer Detection periodic timer.

Answer: BC

NEW QUESTION 61

You are solving a design failure on a massive Hadoop cluster network that has an application with TCP incast behavior (also known as TCP Throughput collapse) affecting its many-to-one communications with packet loss at the last-hop network device. Which metric must be measured to ensure that the network provides the best performance for this application?

- A. Availability
- B. Bandwidth utilization
- C. Jitter values
- D. Buffer utilization

Answer: D

NEW QUESTION 63

Which two general SDN characteristics? (Choose two)

- A. Southbound interfaces are interfaces used between the control plane and the data plane
- B. OpenFlow is considered one of the first Northbound APIs used by SDN controllers
- C. Northbound interfaces are open interfaces used between the control plane and the data plane
- D. The separation of the control plane from the data plane
- E. OVSDB is an application database management protocol

Answer: AD

NEW QUESTION 67

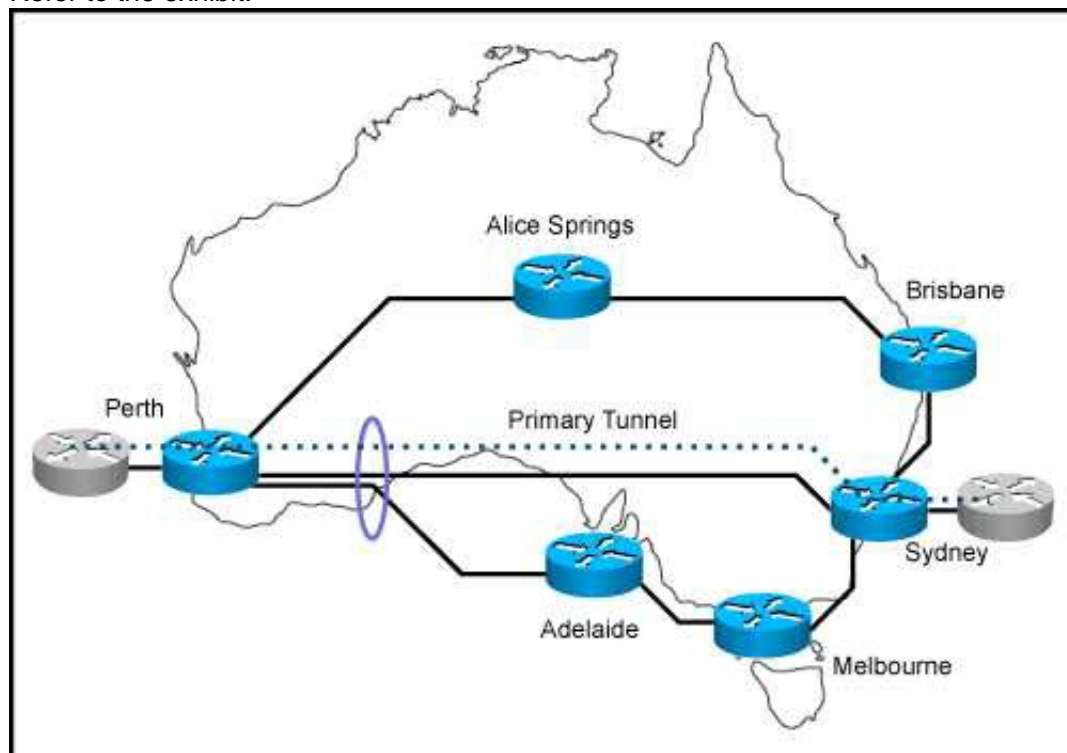
A switched network is being designed to support a manufacturing factory. Due to cost constraints, fiber-based connectivity is not an option. Which design allows for a stable network when there is a risk of interference from the manufacturing hardware in use on the factory floor?

- A. Design the network to include UDLD to detect unidirectional links and take them out of service.
- B. Design the network to include Ether Channel bundles to prevent a single-link failure from taking down a switch interconnection point.
- C. Design the network to include loop guard to prevent a loop in the switched network when a link has too much interference.
- D. Design the network to include Backbone Fast on all devices to accelerate failure convergence times.

Answer: B

NEW QUESTION 69

Refer to the exhibit.



You are designing MPLS-TE for this network. The links from Perth to Sydney and from Perth to Adelaide share the same optical fiber in one given segment. Which feature should you implement to eliminate the risk that a backup tunnel is installed over the same optical fiber as the primary one?

- A. Shared Risk Link Groups

- B. MPLS-TE Path Protection
- C. MPLS-TE auto-tunnel backup
- D. MPLS-TE Link protection

Answer: A

NEW QUESTION 71

An network is designed to use OSPF to reach eBGP peers. Which condition should be avoided in the design to potentially prevent the eBGP peers do not flap continuously in case of link failure?

- A. Disable BGP synchronization.
- B. Advertise IP addresses used on eBGP peer statement via a non-backbone OSPF area.
- C. Advertise via eBGP IP addresses used on eBGP peer statements.
- D. Use an ACL to block BGP in one direction.

Answer: C

NEW QUESTION 73

You work as a network designer for a company that is replacing their Frame Relay WAN with an MPLS VPN service, where the PE-to-CE routing protocol is BGP. The company has 3000 routes in their distribution routers, and they would like to advertise their access routers through the MPLS network. Their service provider, however, only supports 1000 prefixes per VRF. Which two design solutions can be applied to ensure that your access routers will be able to reach all devices in your network? (Choose two.)

- A. Configure the distribution routers to send a default route to the MPLS network
- B. Configure null routes and aggregate routes for the prefixes in your network on the distribution routers
- C. Summarize the routes on MPLS WAN interfaces of the distribution routers
- D. Use prefix lists on the distribution routers to control which routes are sent to MPLS network
- E. Configure the access routers to send a default route to the MPLS network

Answer: AC

NEW QUESTION 76

You are designing an IPv4 any source multicast redundancy solution. Which technology ensures the quickest RP convergence?

- A. Bootstrap router
- B. MSDP anycast RP
- C. Auto-RP
- D. Embedded RP

Answer: B

NEW QUESTION 81

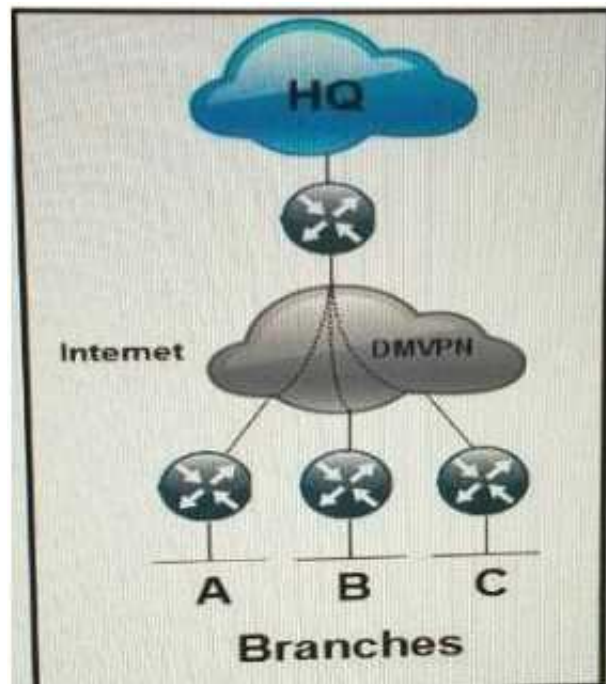
Which two options are considered risks or concerns when both the Internet and VPN service functions are on the same PE router? (Choose two.)

- A. Internet-based attacks can affect VPN customers.
- B. BGP cannot simultaneously run on the PE router that runs MPLS.
- C. MP-BGP prefixes increase routers' global routing tables, which affects network convergence.
- D. Failure on the PE router affects both VPN and Internet services.
- E. Customer performance can be affected by VPN traffic if Internet-based traffic is not prioritized on the PE

Answer: AD

NEW QUESTION 82

Refer to the exhibit.



Which routing solution is the most scalable to connect the branches to the HQ and to connect the branches together over the internet using DMVPN?

- A. EIGRP
- B. EIGRP with the branch routers setup as stubs
- C. OSPF with each branch router as an ABR
- D. IS-IS L2 in all locations
- E. OSPF Area 0 in all locations

Answer: B

NEW QUESTION 85

A network is designed to use OSPF to reach eBGP peers. For eBGP peers to stay stable in case of a link failure, what condition should be avoided?

- A. Advertise IP addresses used on eBGP statements via a normal OSPF area
- B. Use an ACL to block BGP in one direction
- C. Disable BGP synchronization
- D. Advertise IP addresses used on eBGP peer statements via eBGP

Answer: D

NEW QUESTION 90

Which two options are Loop-Free Alternate design considerations? (Choose two)

- A. MPLS TE must be enabled because it is used for building the backup paths
- B. Backup coverage and effectiveness is dependent on the network topology
- C. It can simplify the capacity planning by matching the backup path with the post-convergence path
- D. It provides an optional backup path by avoiding low bandwidth and edge links
- E. It can impact SLA-sensitive appliance by routing traffic to low bandwidth links while IGP convergence is in progress

Answer: BE

NEW QUESTION 92

Which three processes are part of the ITILv3 Service Operation? (Choose three)

- A. Release and deployment management
- B. Problem management
- C. Incident management
- D. Event management
- E. Service-level management
- F. Change management

Answer: BCD

NEW QUESTION 93

You are hired to assist an enterprise customer to design their global WAN network. A protected DWDM circuit with disjoint fiber routes and guaranteed restoration times is ordered to connect two hub sites. Which option is a BFD design consideration in relation to protected DWDM?

- A. BFD failure detection must be faster than DWDM restoration time
- B. The BFD hello timer must match the DWDM circuit restoration time
- C. BFD failure detection must be longer than DWDM restoration time
- D. BFD cannot be used with protected DWDM

Answer: C

NEW QUESTION 98

An enterprise customer A with provider-independent address space is dual-homed to two ISP. Which two options , when combined, allow for customer A to efficiently achieve out-bond traffic load- balancing? (Choose two)

- A. Advertise Customer A subnets with a shorter AS path prepend to one of the ISPs than to the other
- B. Advertise Customer A subnets with different MED values to the two ISPs
- C. Accept a default route from both ISPs
- D. Make the CE connected to both ISPs route reflector
- E. Accept the routes originated on both ISPs and their direct peers

Answer: CE

NEW QUESTION 102

Across a large WAN network, there will be new video traffic being distributed from a single source at any given time however, the video source might originate from different parts of the multicast domain at different times . Which multicast technology provides for this multicast traffic to be distributed with optimal path selection to the source?

- A. Any source Multicast.
- B. PIM sparse mode.
- C. Bidirectional PIM.
- D. Source Specific Multicast.

Answer: D

NEW QUESTION 107

Which two options describe the advantages of using DWDM over traditional optical networks?
 (Choose two)

- A. Inherent topology flexibility with intelligent chromatic dispersion
- B. Inherent topology flexibility and service protection provided without penalty through intelligent oversubscription of bandwidth reservation
- C. Inherent topology flexibility with built-in service protection
- D. Inherent topology flexibility with a service protection provided through a direct integration with an upper layer protocol
- E. Ability to expand bandwidth over existing optical infrastructure

Answer: AE

NEW QUESTION 109

DRAG DROP

Drag and drop the NETCONF layers on the left onto their appropriate description on the right.

transport	defines a set of base protocol operations
messages	provides a communication path between the client and server
operations	provides a framing mechanism for encoding RPCs
content	holds information on data models and protocol operations

- A. Mastered
- B. Not Mastered

Answer: A

Explanation:

operations
transport
messages
content

NEW QUESTION 114

DRAG DROP

An enterprise customer has a national WAN network based on DMVPN over the Internet, with sites located throughout the country. The customer has recently deployed VoIP throughout the entire network, and users report that it takes up to 2 seconds to establish a telephone call to an IP telephone at another office network. Drag and drop the root cause and the corresponding design solution from the left onto the correct targets on the right. Not all options are used

VoIP is not supported over the Internet.	Root Cause
DMVPN spoke-to-spoke tunnels take a few seconds to establish the encryption.	Corresponding Solution
DMVPN does not support per-tunnel QoS.	
The network is using DMVPN Phase 2.	
Replace DMVPN on the WAN with Layer 3 VPN.	
Replace DMVPNs on the WAN with an ELAN solution.	
Use DMVPNs to set up the tunnels and GE LVPN inside the tunnels to maintain the encryption.	
Per-tunnel QoS must be enabled at the DMVPN hub site.	
Migrate from DMVPN Phase 2 to DMVPN Phase 3.	

- A. Mastered

B. Not Mastered

Answer: A

Explanation:

DMVPN spoke to spoke tunnels take a few second

Use DMVPN to set up tunnels and GETVPN for encryption

NEW QUESTION 117

As a part of a network design, you should tighten security to prevent man-in-the-middle. Which two security options ensure that authorized ARP responses take place according to know IP-to-MAC address mapping? (Choose two)

- A. DHCP snooping
- B. ARP spoofing
- C. ARP rate limiting
- D. Dynamic ARP Inspection
- E. Port security

Answer: AD

NEW QUESTION 121

.which two options are benefits of using Topology Independent Loop-Free Alternate in WAN design?
(Choose two)

- A. It provides backup convergence for all topologies by avoiding the post-convergence path
- B. It maximizes the network utilization by load-sharing across low bandwidth and edge links while IGP convergence is in progress
- C. No additional protocols are required in the MPLS network because it uses LDP labels to signal the backup path
- D. Although it requires enabling segment routing, SR does not have to be activated as the preferred forwarding method
- E. It can provide backup paths for IPv4, IPv6 and LDP traffic

Answer: AE

NEW QUESTION 123

In an OSPF network with 20 routers connected together with Ethernet cabling , which topology typically takes the longest to converge?

- A. Full mesh
- B. Ring
- C. Squared
- D. Triangulated
- E. Partial mesh

Answer: B

NEW QUESTION 126

A DMVPN network is being deployed for 10 branch sites to connect to the central headquarters over the Internet. Each branch site connects to the internet via a 1.5 Mb/s ADSL line, and the headquarters connects to the Internet over a 100Mb/s circuit limited to 20 Mb/s by the service provider. Which QoS mechanism if any, do you recommend at the headquarters location?

- A. Rate-limiting the 100 Mb/s circuit to 20 Mb/s
- B. Applying hierarchical QoS with parent policy for the overall circuit and child policy for the spokes
- C. Traffic shaping the 100 Mb/s circuit to 20 Mb/s
- D. QoS is not required in this instance due to maximum traffic being received by the branches being 15 Mb/s

Answer: B

NEW QUESTION 127

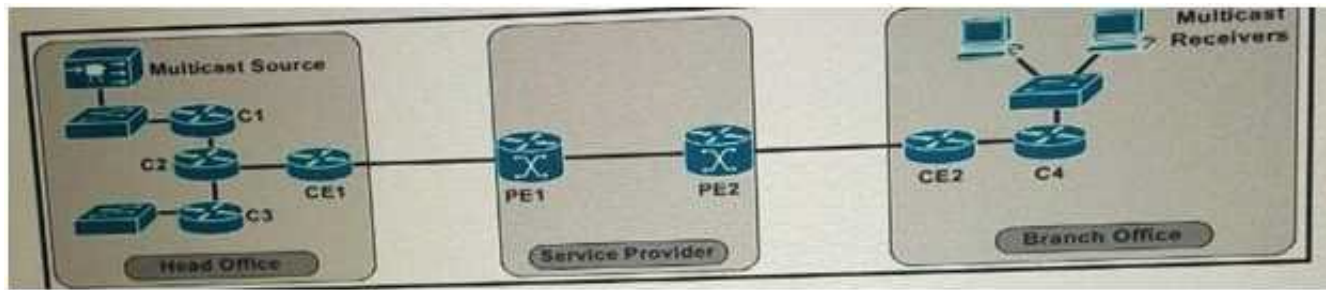
Which three network management requirements are common practices in network design? (Choose three)

- A. Collect RMON poll information for future regression analysis
- B. Ensure that all network devices have their clocks synchronized
- C. Look at average counters instead of instantaneous counters for inconsistent and bursty KPIs, such as CPU utilization and interface utilization.
- D. Collect SNMP poll information for future regression analysis
- E. Validate data plane health, application and services availability with synthetic traffic
- F. Capture both ingress and egress flow-based packet
- G. While avoiding duplications of flows

Answer: BCD

NEW QUESTION 129

Refer to the exhibit.



This enterprise customer wants to stream one-way video from their head office to eight branch offices using multicast. Their current service provider provides a Layer 3VPN solution and manages the CE routers, but they do not currently multicast. Which solution quickly allows this multicast traffic to go through while allowing for future scalability?

- A. Enable a GRE tunnel between nodes C1 and C4
- B. Enable a GRE tunnel between nodes CE1 and CE2
- C. Enable a GRE tunnel between nodes C2 and C4
- D. Implement hub and spoke MPLS VPN over DMVPN(also known as 2547oDMVPN) between CE1 and CE2
- E. The service provider must provide a Draft Rosen Solution to enable a GRE tunnel node PE1 and PE2

Answer: B

NEW QUESTION 134

You are performing a BGP design review for a service provider that offers MPLS-based services to their end customers. The network is comprised of several PE routers that run iBGP with a pair of route reflectors for all BGP address families. Which two options about the use of Constrained Route Distribution for BGP/MPLS VPNs are true? (Choose two.)

- A. The RRs do not need to advertise any route target filter toward the PE routers
- B. The RR must advertise the default route target filter toward the PE routers
- C. Both PE and RR routers must support this feature
- D. This feature must be enabled on all devices in the network at the same time
- E. Route distinguishers are used to constrain routing updates

Answer: BC

NEW QUESTION 138

Which two OSPF network type combinations can you use in the design that requires spoke-to-spoke direct traffic? (Choose two.)

- A. hub as point-to-multipoint and spokes as non-broadcast
- B. hub as point-to-multipoint and spokes as point-to-point
- C. hub as broadcast and spokes as non-broadcast
- D. hub as point-to-point and spokes as point-to-point

Answer: BC

NEW QUESTION 140

Which two options are two advantages of summarizing networks at the aggregation layer rather than at the core? (Choose two.)

- A. It prevents the core from having unnecessary routes.
- B. It no longer needs a core layer.
- C. It prevents black hole routing.
- D. It avoids network-wide impact upon VLAN changes local to the aggregation devices.
- E. it allows for optimal routing

Answer: AD

NEW QUESTION 143

Which three items do you recommend for control plane hardening of an infrastructure device? (Choose three)

- A. To enable unused services
- B. Warning banners
- C. Routing protocol authentication
- D. Control Plane Policing
- E. Redundant AAA servers
- F. SNMPv3

Answer: CDF

NEW QUESTION 145

Which native mechanism does OSPF use to prevent loops in MPLS VPNs?

- A. CE devices that run OSPF set the DN bit toward the PE router
- B. PE devices that run OSPF clear the DN bit toward the CE router
- C. CE devices that run OSPF clear the DN bit toward the PE router
- D. Creation of PE to PE OSPF sham link across the MPLS-created super backbone
- E. PE routers verify OSPF domain IDs used by CE OSPF processes

F. PE devices that run OSPF set the DN bit toward the CE router

Answer: F

NEW QUESTION 148

An enterprise network has two core routers that connect to 200 distribution routers and uses full-mesh iBGP peering between these routers as its routing method. The distribution routers are experiencing high CPU utilization due to the BGP process. Which design solution is the most effective?

- A. Increase the memory on the distribution routers
- B. Increase the memory on the core routers
- C. Implement route reflectors on the two core routers
- D. Increase bandwidth between the core routers
- E. Implement eBGP between the core and distribution routers

Answer: C

NEW QUESTION 149

A healthcare customer requested that health statistics from their infrastructure devices are to be sent over their service provider MPLS network. Which protocol must be enabled?

- A. SNMPv3
- B. Syslog TLS
- C. syslog
- D. SNMPv2
- E. SSH

Answer: A

NEW QUESTION 153

Which two functions are performed at the distribution layer of the three-layer hierarchical network design model? (Choose two).

- A. Fault isolation
- B. QoS classification and marking boundary
- C. Fast transport
- D. Reliability
- E. Load balancing

Answer: AE

NEW QUESTION 157

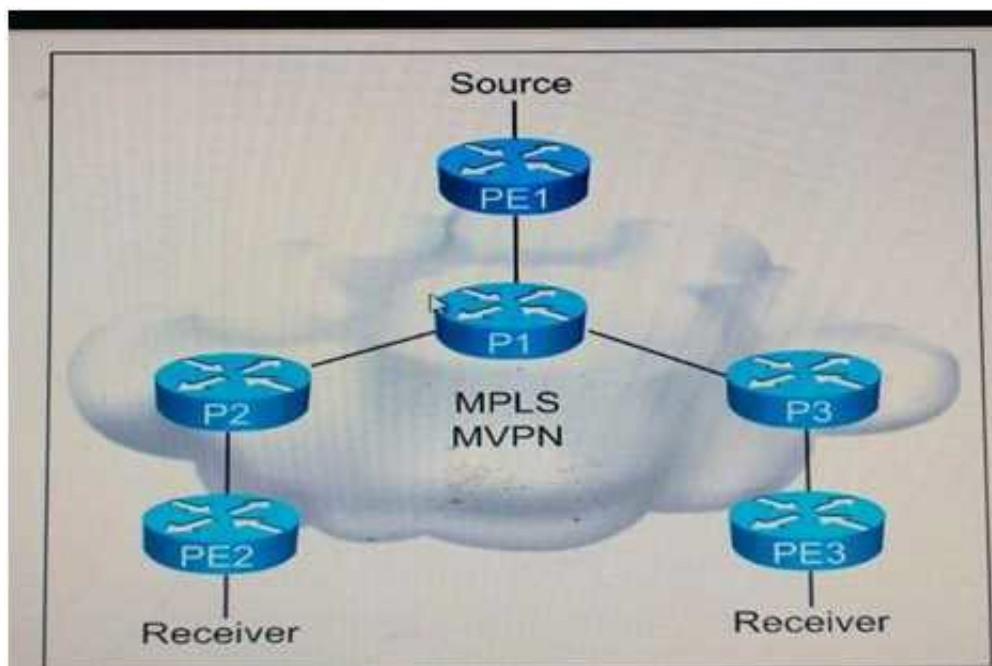
Which three options are IS-IS design considerations when connecting two Layer 3 switches directly using a 10 GBASE-T cabling and formatting an IS-IS neighbor adjacency?

- A. The default IS-IS network type is point-to-point so a DIS is not elected
- B. A DIS is elected between the IS-IS neighbors and the elected DIS is pre-empted if router with a higher system ID is connected
- C. The area, levels, and interface MTU parameters must match, and system MTU must be unique for two IS-IS routers to become adjacent
- D. Faster IS-IS hello and dead timers increase bandwidth and CPU use, and may cause instability
- E. The IS-IS hello and dead timers should be tuned to detect failures as quickly as possible
- F. A DIS is elected between the IS-IS neighbors and the elected Dis is pre-empted if a router with a lower system ID is connected
- G. The hello and dead timers must match for two IS-IS routers to become adjacent

Answer: CDF

NEW QUESTION 161

Refer to the exhibit.



You are a network designer who is given these design requirements: Multicast services must be provided for Layer 3 VPN customers
 The same forwarding technology must be used as Layer 3 VPN unicast packets
 Replication of multicast traffic is not allowed on the ingress PE

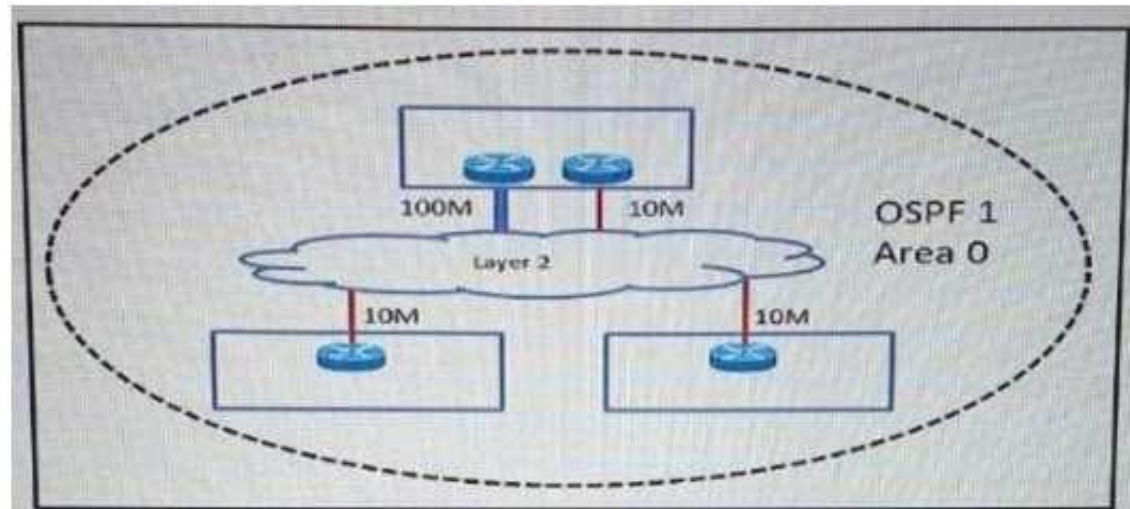
Which multicast VPN technology conforms to the design requirements?

- A. Multipoint-to-point LDP
- B. MSDP
- C. MLDP VPN
- D. Rosen Draft using LDP

Answer: C

NEW QUESTION 162

Refer to the exhibit.



An enterprise has three sites over a Layer 2 Metro Ethernet ELAN service. 100Mb/s and 10 Mb/s links have been provisioned to provide redundancy for the head office. When OSPF routing enabled to provide connectivity and the correct bandwidth statement has been applied to each interface, the branch sites observe two equal-cost routes to the head office. The enterprise wants to send all traffic through the 100 Mb/s link and use the 10Mb/S link strictly as a backup. Which OSPF network type must be set to ensure that the head office 100 Mb/s circuit is preferred over the 10 Mb/s circuit, at the same time minimize the amount of configuration required on all of the routers throughout the network?

- A. NBMA
- B. Point-to-multipoint
- C. Point-to-point
- D. Broadcast

Answer: C

NEW QUESTION 164

Which open source message broker is in the Cisco Cloud Center?

- A. Apache kafka
- B. HornetQ
- C. RabbitMQ
- D. Fuse Message Broker
- E. Oracle Message Broker

Answer: C

NEW QUESTION 166

Which two items are required for data plane hardening of an infrastructure device? (Choose two)

- A. Disable unused services
- B. Routing protocol authentication
- C. SNMPv3
- D. Redundant AAA servers
- E. Infrastructure ACLs
- F. Warning banners
- G. Control Plane Policing

Answer: AE

NEW QUESTION 170

Which four resources does Cisco Cloud Center provision in an ACL environment? (Choose four)

- A. VLAN Pool
- B. Contracts
- C. End point Group (EPG)
- D. VRF
- E. Subject/Filters
- F. Application Network Profile (ANP)

Answer: BCEF

NEW QUESTION 172

Your customer asked you to redesign there is-IS network to reduce to a minimum the number of adjacencies because the network has several routers running L1/L2 mode on the sme Ethernet segment. Which action do you recommend?

- A. Define only one router on the segment to be DIS
- B. Make the interface priority on the backup DIS lower than the primary DIS
- C. Change half the routers to L1 routers and half to L2 routers
- D. Change all routers to a single-level area

Answer: D

NEW QUESTION 176

In a design around fast convergence in case of a link failure, what is the justification for using a point-to-point OSPF network type on the Ethernet links between leaf-and-spine switches on a data center fabric?

- A. Link failure tears down neighbor relationships regardless of network type configured
- B. Type 1 LSAs are not generated on a point-to-point network type
- C. Adjacencies can be built faster without a DR/BDR on the segment
- D. The fabric memory requirements are significantly smaller than with a DR/BDR on each leaf and spine segment
- E. The point-to-point network type allows for NSF to be used in this design

Answer: C

NEW QUESTION 180

A data center deign requires monitoring of their business critical voice and video services accessed by remote locations. Which two items are applicable? (Choose two)

- A. If multiple applications share the same DSCP or CoS values, NBAR can be utilized
- B. The applications being monitored must be assigned a unique CoS value
- C. If multiple applications share the same the same DSCP or CoS values, IPFIX can be utilized
- D. The applications being monitored must be assigned a unique QoS profile
- E. The applications being monitored must be assigned unique DSCP values
- F. The reporting data must be assigned to a QoS profile to ensure accurate statistics

Answer: CF

NEW QUESTION 183

Which MPLS attribute is required for links to carry a given MPLSTE tunnel?

- A. TE tunnel destination address
- B. Tunnel path-selection metric
- C. Affinity
- D. Next-hop backup tunnel

Answer: A

NEW QUESTION 185

Which DCI technology utilizes a “flood and learn” technique to populate the Layer 2 forwarding table?

- A. OTV
- B. E-VPN
- C. VPLS
- D. LISP

Answer: A

NEW QUESTION 188

You are working on a network design plan for a company with approximately 2000 sites. The sites will be connected using the public Internet. You plan to use private IP addressing in the network design, which will be routed without NAT through an encrypted WAN network. Some sites will be connected to the Internet with dynamic public IP addresses, and these addresses may change occasionally. Which VPN solution will support these design requirements?

- A. GET VPN must be used, because DMVPN does not scale to 2000 sites.
- B. DMVPN must be used, because GET VPN does not scale to 2000 sites.
- C. GET VPN must be used, because private IP addresses cannot be transferred with DMVPN through the public Internet.
- D. DMVPN must be used, because private IP addresses cannot be transferred with GET VPN through the public Internet.
- E. GET VPN must be used, because DMVPN does not support dynamic IP addresses for some sites.
- F. DMVPN must be used, because GET VPN does not support dynamic IP addresses for some sites.

Answer: D

NEW QUESTION 193

A Mobile Service Provider would like to design and deploy an Ethernet service which has similar physical link failover/failback characteristics on the active/backup links as the APS/MSP SONET properties. Which Layer 2 service addresses should be considered to address this design feature?

- A. Port-Channel
- B. MLPPP
- C. Flex Link
- D. Ethernet Pseudowire

Answer: C

NEW QUESTION 198

Which three reasons to deploy an IDS sensor in promiscuous mode when you design a security solution are true? (Choose three.)

- A. Solution should be resistant to sensor failure.
- B. Solution should allow for stream normalization.
- C. Solution should not impact jitter and latency for voice traffic.
- D. Solution should allow for signature-based pattern matching.
- E. Solution should allow to deny packets inline.

Answer: ACD

NEW QUESTION 201

How can EIGRP topologies be designed to converge as fast as possible in the event of a point-to-point link failure?

- A. Build neighbor adjacencies in a triangulated fashion
- B. Build neighbor adjacencies in a squared fashion
- C. Limit the query domain by use of distribute lists
- D. Limit the query domain b use of summarization
- E. Limit the query domain by use of default routes

Answer: D

NEW QUESTION 204

Which aspect is a significant disadvantage of containers?

- A. Security
- B. Time to deploy
- C. Inefficiency
- D. Reduced operational overhead
- E. Resource consumption

Answer: A

NEW QUESTION 206

VPLS is implemented in a Layer 2 network with 2000 VLANs. Which must be the primary concern to ensure successful deployment of VPLS?

- A. The underlying transport mechanism
- B. PE scalability
- C. Flooding is necessary to propagate MAC address reachability information
- D. VLAN scalability

Answer: C

Explanation:

[I think B not 100% sure]

NEW QUESTION 210

Which two conditions must be met for EIGRP to maintain an alternate loop-free path to a remote network? (Choose two)

- A. The Reported Distance from a successor is lower than the local Feasible Distance
- B. The Reported Distance from a successor is higher than the local Feasible Distance
- C. A feasible successor must be present
- D. The feasible Distance from a successor is lower than the local Reported Distance
- E. The feasibility condition do not need to be met

Answer: AC

NEW QUESTION 213

A company requires to connect two data center sites using a hub-and-spoke design. There are 2000 remote sites. It is required to transfer MPLS labeled packets over the public Internet using one router at each remote site. These MPLS labeled packets must be encapsulated inside IP packets. Which solution must be used to simplify this network design?

- A. GET VPN encrypts the MPLS packets with IPsec.
- B. DMVPN dynamically builds GRE tunnels with MPLS encapsulation inside.
- C. Site-to-site IPsec without GRE encapsulates the MPLS packets.
- D. PPPoE encapsulates the MPLS packets
- E. L2TPv3 encapsulated the MPLS packets

Answer: B

NEW QUESTION 216

What is a design benefit of PortFast?

- A. PortFast allows small, unmanaged switches to be plugged into ports of access switches without risking switch loops
- B. PortFast disables spanning-tree on the port, which puts the port into the forwarding state immediately after it is connected
- C. Portfast does not generate a spanning-tree topology change when a station on a port is connected or disconnected
- D. PortFast detects one-way communications on the physical port, when prevents switch loops
- E. PortFast prevents switched traffic from traversing suboptimal paths on the network
- F. PortFast prevents switch loops that are caused by a unidirectional point-to-point link condition on Rapid PVST+ and MST

Answer: B

NEW QUESTION 221

Which are two open-source SDN controllers? (Choose two)

- A. Big Cloud Fabric
- B. OpenContrail
- C. Application Policy Infrastructure Controller
- D. Virtual Application Networks SDN controller
- E. OpenDaylight

Answer: BE

NEW QUESTION 226

For a redesign requirement of the service provider network, summarization was implemented at multiple locations for each summary range. Now some customers of the service provider are complaining of higher latency and performance issues for a server hosted in the summarized are

- A. Which design issues must be considered when creating the summarization?
- B. Summarization adds CPU overhead on the routers sourcing the summarized advertisement.
- C. Summarization prevents the visibility of the metric to the component subnets.
- D. Summarization causes packet loss when RPF is enabled.
- E. Summarization creates routing loops.

Answer: B

NEW QUESTION 229

Which two SAN designs appropriate to support large-scale SAN environments? (Choose two)

- A. Edge-core-edge design
- B. Fibre Channel forwarder
- C. Split fabric design
- D. Core-edge design
- E. Dual fabric design

Answer: AD

NEW QUESTION 232

Which mechanism does OSPF use to prevent loops in an MPLS Layer 3 VPNS environment?

- A. Sham link
- B. Down bit
- C. P-Bit
- D. Domain ID
- E. Routing bit

Answer: B

NEW QUESTION 236

When a multiprotocol routing environment is designed to have several routers redistributing among the routing domains, how can routing loops be avoided?

- A. By implementing spanning tree
- B. By activating split horizon
- C. By using the AS-path attribute
- D. By using route tags

Answer: D

NEW QUESTION 241

As part of network design, two geographically separated data centers must be interconnected using Ethernet-over-MPLS pseudowire. The link between the sites is stable, the topology has no apparent loops, and the root bridges for the respective VLANs are stable and unchanging. Which aspect must be the part of the design to mitigate the risk of connectivity issues between the data centers?

- A. Enable Spanning Tree on one data center, and Rapid Reconfiguration of Spanning tree on the other
- B. Ensure that the spanning tree diameter for one or more VLANs is not too large.
- C. Enable UDLD on the link between the data centers.
- D. Enable root guard on the link between the data centers.

Answer: B

NEW QUESTION 243

A large ISP is analysing which IGP meets these following requirements Network must be resilient against unstable MTU in one side of newly released transmission pieces of equipment Network must support MPLS traffic engineering solution for future use Which IGP must be selected and why?

- A. ISIS : in case MTU changes your TE tunnels keep the LSP stable
- B. OSPF: adjacency remains up even if MTU changes
- C. OSPF: in case MTU changes your TE tunnels keep the LSP stable
- D. ISIS: adjacency remains up even if MTU changes

Answer: D

NEW QUESTION 247

Which are two data plane hardening techniques? (Choose two)

- A. Infrastructure ACLs
- B. Control Plane Policing
- C. Redundant AAA servers
- D. Disable unused services
- E. Routing protocol authentication
- F. SNMPv3
- G. Warning banners

Answer: AB

NEW QUESTION 250

Which statement about SDN framework environment is true?

- A. The control plane functions is split between a SDN controller and the networking element
- B. The data plane is pulled from the networking element and put in a SDN controller
- C. The data plane is controlled by a centralized SDN element
- D. The control plane is pulled from the networking element and put in a SDN controller
- E. The control plane and data plane is pulled from the networking element and put in a SDN controller and SDN agent

Answer: D

NEW QUESTION 251

How can jitter be compensated on an IP network that carries real-time VoIP traffic with acceptable voice transmission quality?

- A. Set up VAD to replace gaps on speech with comfort noise
- B. Change CODEC from G.729 to G.711
- C. Deploy RSVP for dynamic VoIP packet classification
- D. Set up a playout buffer to play back the voice stream

Answer: D

NEW QUESTION 252

On a large enterprise security solution, which two options are IDS or IPS modes of operation? (Choose two)

- A. Transparent mode
- B. Routed mode
- C. Inline mode
- D. Traffic discovery mode
- E. Promiscuous mode

Answer: C&E

NEW QUESTION 255

In an Ethernet link containing five routers with OSPF network interface type configured as broadcast, how many OSPF adjacencies are established on this Ethernet link?

- A. 7
- B. 5
- C. 10
- D. 20
- E. 6

Answer: A

NEW QUESTION 260

What is an effect of using ingress filtering to prevent spoofed addresses on a network design?

- A. It reduces the effect of DDoS attacks when associated with DSCP remarking to Scavenger
- B. It protects the network infrastructure against spoofed DDoS attacks
- C. It filters RFC 1918 addresses
- D. It classifies bogon traffic and remarks it with DSCP bulk

Answer: B

NEW QUESTION 265

DRAG DROP

A service provider offers Layer 2 multipoint services to their customers. Drag the protocol on the left to the target on the right to indicate the protocols that can be used to signal pseudowires.

LDP

RSVP

BGP

L2TPv3

Protocols

- A. Mastered
- B. Not Mastered

Answer: A

Explanation:

Protocols

LDP

BGP

NEW QUESTION 268

DRAG DROP

What is the definition of jitter, and how must network designers compensate for jitter so an IP network can carry real-time VoIP traffic?

Jitter is the actual delay between the time a packet is expected to transmit and when it actually transmits.

Jitter is the variation between the time a packet is expected to arrive and when it actually arrives.

Jitter is the variation between the time a packet is expected to drop and when it actually drops.

Set up a play-in buffer to play back the voice stream in a smooth fashion and avoid discontinuity in the voice stream.

Set up a play-out buffer to play back the voice stream in a smooth fashion and avoid discontinuity in the voice stream.

Definition of jitter

How to compensate for jitter

- A. Mastered
- B. Not Mastered

Answer: A

Explanation:

Definition of jitter

Jitter is the variation between the time a packet is expected to arrive and when it actually arrives.

How to compensate for jitter

Set up a play-out buffer to play back the voice stream in a smooth fashion and avoid discontinuity in the voice stream.

NEW QUESTION 273

DRAG DROP

Drag the QoS tools on the left and drop each into its corresponding function on the right.

Policing	Addresses congestion that is due to speed mismatches when CIR is not exceeded.
Marking	Drops traffic to ensure that the committed or offered rate are not exceeded.
Buffering	Allows drops to be minimized based on traffic classification when CIR is exceeded.
WRED	Allows for consistent classification within a DiffServ domain.
Shaping	Avoids congestion via selective traffic dropping within the network.
ECN	Avoids congestion by end hosts reducing their traffic rates when congestion is detected.

- A. Mastered
 B. Not Mastered

Answer: A

Explanation:

Buffering

Policing

Shaping

Marking

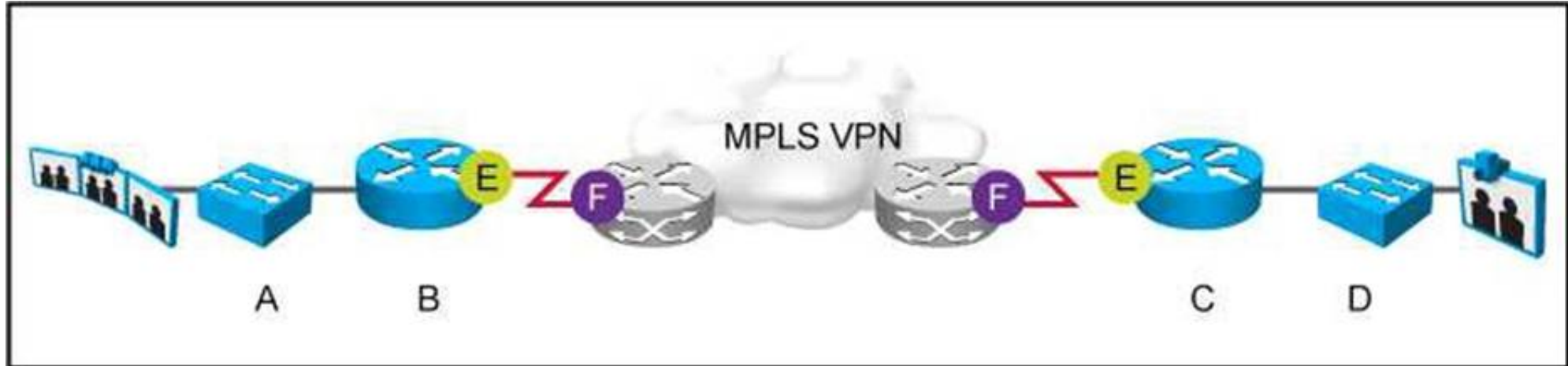
WRED

ECN

NEW QUESTION 274

DRAG DROP

Refer to the exhibit.



Company ACME is adding a Cisco TelePresence system for real-time collaboration and wants to ensure the highest user experience. Drag and drop the necessary QoS mechanisms from the left to the right in any order. Not all options will be used.

Enable policer on switches A and D

Enable LLQ or CBWFQ for real-time interactive (CS4)

Rewrite DSCP to 0 to ensure equal treatment for all traffic

Enable HQoS shaper on router interface E if necessary

Enable HQoS shaper on router interface F

Enable CBWFQ for signaling traffic (CS3)

Remark traffic at router interface F

Trust DSCP at switches A and D

Remark DSCP at router interface E

QoS mechanism 1

QoS mechanism 2

QoS mechanism 3

QoS mechanism 4

QoS mechanism 5

- A. Mastered
- B. Not Mastered

Answer: A

Explanation:

Enable LLQ or CBWFQ for real-time interactive (CS4)

Enable HQoS shaper on router interface E if necessary

Enable CBWFQ for signaling traffic (CS3)

Trust DSCP at switches A and D

Remark DSCP at router interface E

NEW QUESTION 278

DRAG DROP

You are designing a new data center network. Drag and drop new data center requirements on the left into the appropriate design principle on the right.

design a VLAN dedicated for storage traffic

fault isolation

design for server NIC teaming

redundancy

design a single VLAN per access switch

segmentation

design diverse cabling cabinets

- A. Mastered
B. Not Mastered

Answer: A

Explanation:

design a single VLAN per access switch

design for server NIC teaming

design a VLAN dedicated for storage traffic

NEW QUESTION 281

.....

Thank You for Trying Our Product

We offer two products:

1st - We have Practice Tests Software with Actual Exam Questions

2nd - Questions and Answers in PDF Format

352-001 Practice Exam Features:

- * 352-001 Questions and Answers Updated Frequently
- * 352-001 Practice Questions Verified by Expert Senior Certified Staff
- * 352-001 Most Realistic Questions that Guarantee you a Pass on Your First Try
- * 352-001 Practice Test Questions in Multiple Choice Formats and Updates for 1 Year

100% Actual & Verified — Instant Download, Please Click
[Order The 352-001 Practice Test Here](#)