

Exam Questions 98-349

Windows Operating System Fundamentals

<https://www.2passeasy.com/dumps/98-349/>



NEW QUESTION 1

- (Exam Topic 1)

Which program will run on a 64-bit version of the Windows operating system?

- A. A 32-bit laser printer driver
- B. A 32-bit video card driver
- C. A 32-bit version of Microsoft Office
- D. A 32-bit wireless network adapter driver

Answer: C

NEW QUESTION 2

- (Exam Topic 1)

Which describes the purpose of Power Saver mode for a portable computer?

- A. To lock the computer when it is idle
- B. To prevent unauthorized programs from consuming resources
- C. To protect the display from burned-in images
- D. To shut down idle devices to conserve battery charge

Answer: D

NEW QUESTION 3

- (Exam Topic 1)

Every time you insert a music CD, you receive a dialog box that asks which action you want Windows to perform.

Which should you configure so that your personal computer automatically identifies an audio CD and starts playing music?

- A. The Autoplay settings
- B. The Ease of Access settings
- C. A desktop gadget
- D. The Personalization settings

Answer: A

NEW QUESTION 4

- (Exam Topic 1)

Which online service allows you to store and retrieve files over the Internet?

- A. Windows Future Storage
- B. Windows Live SkyDrive
- C. Windows Media Center
- D. Windows Storage Server

Answer: B

NEW QUESTION 5

- (Exam Topic 1)

You need to configure a mouse for a left-handed user. What should you do?

- A. Configure alternate input devices.
- B. Use Device Manager to modify settings in the Mouse Properties dialog box.
- C. Use Control Panel to modify settings in the Mouse Properties dialog box.
- D. Use the manufacturer's website to update the mouse driver.

Answer: C

NEW QUESTION 6

- (Exam Topic 1)

Which feature allows you to create a new virtual application?

- A. Application Virtualization Sequencer
- B. Windows Installer
- C. Remote Desktop Connection
- D. Windows Virtual PC

Answer: A

NEW QUESTION 7

- (Exam Topic 1)

Which two descriptions of Windows PowerShell are accurate? (Choose two.)

- A. A utility for upgrading your Windows operating system
- B. Designed to synchronize files between a computer and a network location
- C. Allows you to run scripts to perform various administrative tasks
- D. An interface that is an enhancement of the capabilities of the Windows Command window

Answer: CD

NEW QUESTION 8

- (Exam Topic 1)

Which Windows feature should you use to assign a drive letter to a shared folder on the network?

- A. Public Folder Sharing
- B. Computer Management Console
- C. Advanced Sharing
- D. Map Network Drive

Answer: D

NEW QUESTION 9

- (Exam Topic 1)

Which two features are supported by the Infrared Data Association (IrDA) protocol? (Each correct answer presents a complete solution. Choose two.)

- A. Data can be transferred across short distances.
- B. One computer can control another computer through a wireless connection.
- C. Some features of another computer can be controlled by using a remote control unit.
- D. The computer can identify Bluetooth devices.

Answer: AC

NEW QUESTION 10

- (Exam Topic 1)

You need to be able to access a file stored in a shared folder on your network even when you are disconnected from the network. What should you do?

- A. Configure the folder permissions as Read/Write.
- B. Make the folder available offline.
- C. From Control Panel, use Network and Internet.
- D. Type the IP address of the network computer in the Address field of Internet Explorer.

Answer: B

NEW QUESTION 10

- (Exam Topic 1)

You need a script to run at a specific time. Which Windows component should you use?

- A. Task Manager
- B. Device Manager
- C. Task Scheduler
- D. Event Viewer

Answer: C

NEW QUESTION 14

- (Exam Topic 1)

You plan to upgrade your computer to Windows 7.

You need to view a report that identifies potential compatibility problems with your computer's hardware, devices, and programs.

Which tool should you use?

- A. Sync Center
- B. Windows Anytime Upgrade
- C. Windows Upgrade Advisor
- D. Windows Easy Transfer

Answer: C

NEW QUESTION 15

- (Exam Topic 1)

Which Windows feature allows secure printing over the Internet?

- A. Secure Transfer Protocol (STP)
- B. Internet Printing Protocol (IPP) by using HTTPS
- C. Voce over Internet Protocol (VoIP)
- D. Web2Print

Answer: B

NEW QUESTION 19

- (Exam Topic 1)

The Windows Action Center allows you to:

- A. Choose options during system startup.

- B. View alerts and take appropriate actions to keep Windows running smoothly.
- C. View and modify settings of installed programs.
- D. Manage the documents in the print queue.

Answer: B

NEW QUESTION 23

- (Exam Topic 1)

Which Windows feature should you use to find patches for Internet Explorer?

- A. Sync Center
- B. System Information
- C. Internet Properties
- D. Windows Update

Answer: D

NEW QUESTION 27

- (Exam Topic 1)

What is the maximum size of a virtual hard disk?

- A. 2 terabytes
- B. 5 terabytes
- C. 16 terabytes
- D. 500GB

Answer: A

NEW QUESTION 32

- (Exam Topic 1)

You need to manage service dependencies on your Windows 7 computer. Which feature should you use?

- A. Action Center
- B. Event Viewer
- C. Task Scheduler
- D. Computer Management Console

Answer: D

NEW QUESTION 35

- (Exam Topic 1)

Which is a potential risk when redirecting a USB storage device during a Remote Desktop session?

- A. Access can be slower.
- B. The device can stop working.
- C. The session can stop responding.
- D. Data can be lost.

Answer: D

NEW QUESTION 38

- (Exam Topic 2)

Match the Device Manager icon description to its meaning.

To answer, drag the appropriate icon description from the column on the left to its meaning on the right. Each icon description may be used once, more than once, or not at all. Each correct match is worth one point.

Icons	Answer Area	
black exclamation point on a yellow background	The device was manually disabled.	icon
red X	A critical error has occurred and the device has been disabled by the operating system.	icon
white circle with a black down arrow	The device is NOT functioning properly.	icon

- A. Mastered
 B. Not Mastered

Answer: A

Explanation:

Icons	Answer Area	
black exclamation point on a yellow background	The device was manually disabled.	white circle with a black down arrow
red X	A critical error has occurred and the device has been disabled by the operating system.	red X
white circle with a black down arrow	The device is NOT functioning properly.	black exclamation point on a yellow background

NEW QUESTION 43

- (Exam Topic 2)

This question requires that you evaluate the underlined text to determine if it is correct.

To actively scan for spyware and viruses, you should ensure Action Center is installed and running. Select the correct answer if the underlined text does not make the statement correct. Select "No change is needed" if the underlined text makes the statement correct.

- A. Windows Defender
 B. The Malicious Software Removal Tool
 C. Microsoft Security Essentials
 D. No change is needed.

Answer: C

NEW QUESTION 44

- (Exam Topic 2)

You want to configure Windows to periodically and automatically check for the most recent driver for your video card Which Windows feature should you use?

- A. Windows Update
- B. Device Manager
- C. Windows Installer
- D. Programs and Features

Answer: A

NEW QUESTION 47

- (Exam Topic 2)

What are three functions of Windows 7 Upgrade Advisor? (Choose three.)

- A. Determines if your computer is capable of running Windows 7
- B. Obtains any drivers necessary to perform a Windows 7 upgrade
- C. Gives you the option to run an installation wizard
- D. Determines if there are any compatibility issues
- E. Determines which Windows 7 editions work on your computer
- F. Helps with the installation of a new Windows 7 system

Answer: ADE

NEW QUESTION 49

- (Exam Topic 2)

You are working as a technical intern for Tailspin Toys. A product developer plans to attend a convention in France and wants to bring a company-owned Windows 7 Ultimate laptop. Your manager is concerned about the security of the information contained on the laptop and asks you to turn on BitLocker.

You receive the error message shown in the following image:



Use the drop-down menus to select the answer choice that completes each statement. Each correct selection is worth one point

Answer Area

You check [answer choice] on the system to see if a TPM was disabled.

If it is determined that the system does not have a TPM, you should use [answer choice] to allow you to enable BitLocker on the computer.

Answer Area

You check [answer choice] on the system to see if a TPM was disabled.

If it is determined that the system does not have a TPM, you should use [answer choice] to allow you to enable BitLocker on the computer.

- A. Mastered
- B. Not Mastered

Answer: A

Explanation:

You check [answer choice] on the system to see if a TMP was disabled.

System Bios

If it is determined that the system does not have a TPM, you should use [answer choice] to allow you to enable BitLocker on the computer.

Local Security Policy

NEW QUESTION 53

- (Exam Topic 2)

You are an intern at a large company that has various versions of Windows installed on desktops throughout the company.

The Chief Information Officer (CIO) asks you to upgrade as many desktops as possible to Windows 10 Enterprise.

Which two versions of Windows can be upgraded to Windows 10 Enterprise? (Choose two.)

- A. Windows 7 Ultimate
- B. Windows 8.1 Professional Windows Media Center edition
- C. Windows 8.1 Connected
- D. Windows 8 Core
- E. Windows 8.1 RT

Answer: AB

Explanation:

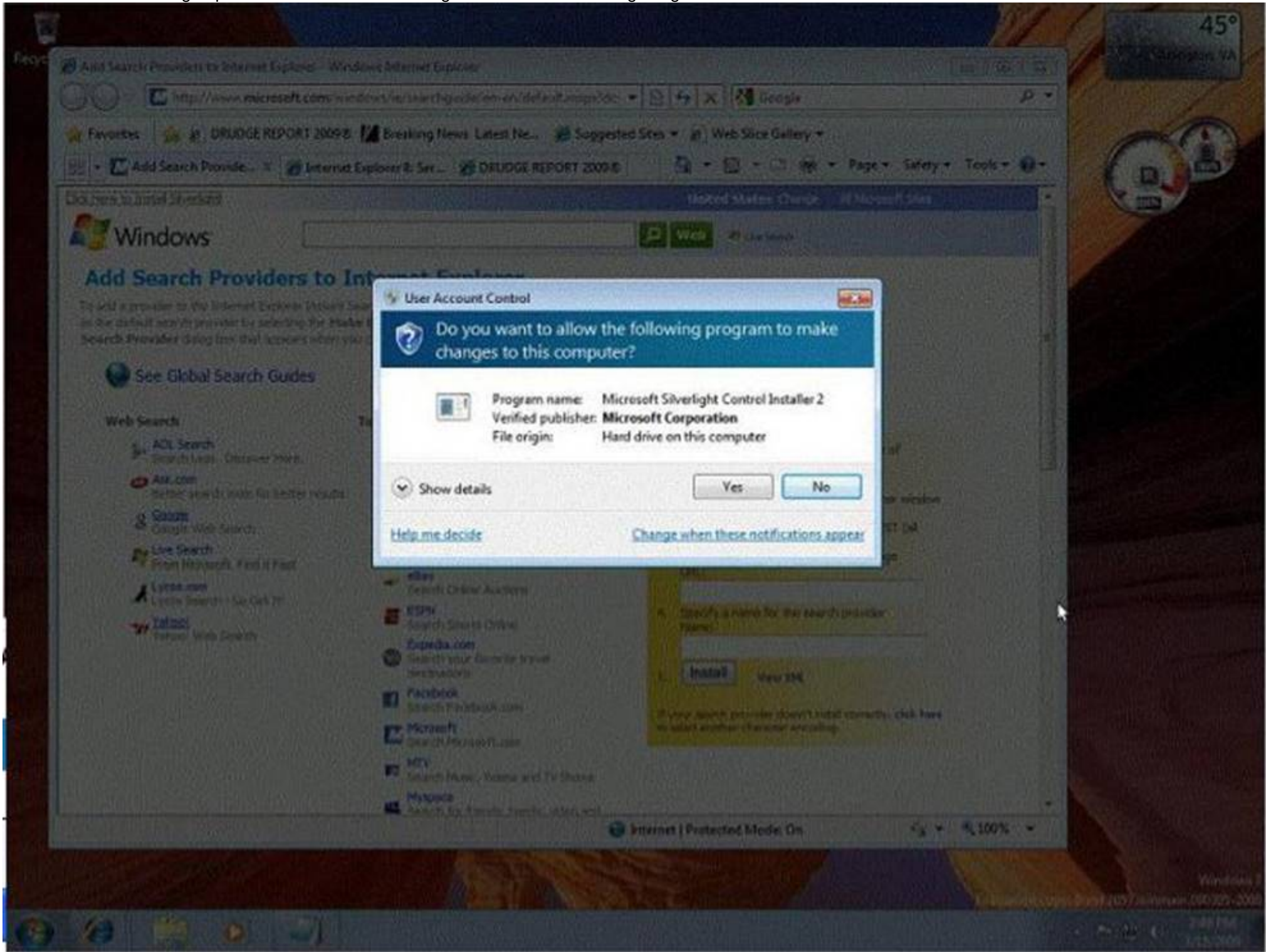
References:https://docs.microsoft.com/en-us/windows/deployment/upgrade/windows-10-upgrade-paths

NEW QUESTION 58

- (Exam Topic 2)

You are an IT intern for a nonprofit organization.

A user in the accounting department receives the message shown in the following image:



You need to explain the message to the user.

Use the drop-down menus to select the answer choice that completes each statement. Each correct selection is worth one point

Answer Area

The dimming of the background behind the dialog box indicates that the message is [answer choice]

The question mark icon in the dialog box means Windows believes there is a [answer choice] trying to install.

Answer Area

The dimming of the background behind the dialog box indicates that the message is [answer choice]

a virus trying to take over, on the secure desktop, initiated by a Windows component.

The question mark icon in the dialog box means Windows believes there is a [answer choice] trying to install.

malware application
digitally-signed application
digitally-unsigned application

- A. Mastered
- B. Not Mastered

Answer: A

Explanation:

Answer Area

The dimming of the background behind the dialog box indicates that the message is [answer choice]

The question mark icon in the dialog box means Windows believes there is a [answer choice] trying to install.

a virus trying to take over, on the secure desktop.
initiated by a Windows component.

malware application
digitally-signed application
digitally-unsigned application

NEW QUESTION 63

- (Exam Topic 2)

You turn on your computer. You receive the following message: "System Disk Not Found." Which Windows feature should you use to restore your computer?

- A. Check Disk (Chkdsk)
- B. Last Known Good Configuration
- C. safe Mode
- D. Automated System Recovery

Answer: C

NEW QUESTION 68

- (Exam Topic 2)

You need to print a paper to give to your professor. A classmate says you can print to a USB printer, which is connected to another computer.

You try to add to your printer list and get prompted for a password that you do not know. Why does adding the printer to your computer require a password?

- A. Your User ID is not part of the local Administrators group.
- B. Your computer is not part of a domain.
- C. Your computer is not on the same network as the printer.
- D. Password Protected Sharing is enabled.

Answer: D

Explanation:

References:<https://www.recoverlostpassword.com/windows-10/how-to-turn-off-password-protected-sharing-in-w>

NEW QUESTION 70

- (Exam Topic 2)

For each of the following statements, select Yes if the statement is true. Otherwise, select No. Each correct selection is worth one point.

Answer Area

	Yes	No
Use MSINFO32.exe to obtain information about your computer system.	<input type="radio"/>	<input type="radio"/>
Use System Information to obtain details about a computer's hardware resources.	<input type="radio"/>	<input type="radio"/>
Use System Information to obtain details about a computer's software environment.	<input type="radio"/>	<input type="radio"/>

- A. Mastered
- B. Not Mastered

Answer: A

Explanation:

Answer Area

	Yes	No
Use MSINFO32.exe to obtain information about your computer system.	<input checked="" type="radio"/>	<input type="radio"/>
Use System Information to obtain details about a computer's hardware resources.	<input checked="" type="radio"/>	<input type="radio"/>
Use System Information to obtain details about a computer's software environment.	<input checked="" type="radio"/>	<input type="radio"/>

NEW QUESTION 73

- (Exam Topic 2)

This question requires that you evaluate the underlined text to determine if it is correct.

You can export information to a text file by using the msconfig command from a command prompt. Select the correct answer if the underlined text does not make the statement correct. Select "No change is needed" if the underlined text makes the statement correct.

- A. msinfo32
- B. perfmon
- C. taskmgr
- D. No change is needed

Answer: A

NEW QUESTION 78

- (Exam Topic 2)

The owner of a bookstore asks you to help her set up a printer in exchange for a discount on purchases. She has three Windows 7 computers networked through a wireless router and connected through a HomeGroup. She also has a new USB printer and wants to be able to print from any of the three computers.

First, you install the printer on one of the three computers.

What should you do next to share this printer with the HomeGroup?

- A. Connect the printer directly to the network and share it with the HomeGroup.
- B. From Control Panel, select the HomeGroup feature
- C. Make sure that the Printers checkbox is enabled.
- D. Connect to the printer over TCP/IP and then share it with the HomeGroup.
- E. Configure each computer's firewall to allow port 631 because HomeGroup's printer sharing feature uses the IPP protocol.

Answer: B

NEW QUESTION 81

- (Exam Topic 2)

For each of the following statements, select Yes if the statement is true. Otherwise, select No. Each correct selection is worth one point.

Answer Area

	Yes	No
Users logged in to Windows 7 as administrators are given a standard user token in addition to their administrator token.	<input type="radio"/>	<input type="radio"/>
A standard user account is able to make changes to services or drivers that affect other users of the computer.	<input type="radio"/>	<input type="radio"/>
To make changes to how UAC operates, you must be logged in as an administrator.	<input type="radio"/>	<input type="radio"/>

- A. Mastered
- B. Not Mastered

Answer: A

Explanation:

Answer Area

	Yes	No
Users logged in to Windows 7 as administrators are given a standard user token in addition to their administrator token.	<input checked="" type="radio"/>	<input type="radio"/>
A standard user account is able to make changes to services or drivers that affect other users of the computer.	<input type="radio"/>	<input checked="" type="radio"/>
To make changes to how UAC operates, you must be logged in as an administrator.	<input checked="" type="radio"/>	<input type="radio"/>

NEW QUESTION 85

- (Exam Topic 2)

You need to be able to view multiple time zones on your desktop. What should you do?

- A. Add multiple clock gadgets.
- B. Modify the System and Security settings.
- C. Configure dual-display.
- D. Modify the Date and Time properties of the computer.

Answer: B

NEW QUESTION 90

- (Exam Topic 2)

For each of the following statements, select Yes if the statement is true. Otherwise, select No. Each correct selection is worth one point.

Answer Area

	Yes	No
NTFS and FAT32 both support a file size of over 4 GB.	<input type="radio"/>	<input type="radio"/>
NTFS and FAT32 can both use permissions and encryption.	<input type="radio"/>	<input type="radio"/>
NTFS and FAT32 can both be used as the format for Windows 7.	<input type="radio"/>	<input type="radio"/>

- A. Mastered
- B. Not Mastered

Answer: A

Explanation:

Answer Area

	Yes	No
NTFS and FAT32 both support a file size of over 4 GB.	<input type="radio"/>	<input checked="" type="radio"/>
NTFS and FAT32 can both use permissions and encryption.	<input type="radio"/>	<input checked="" type="radio"/>
NTFS and FAT32 can both be used as the format for Windows 7.	<input checked="" type="radio"/>	<input type="radio"/>

NEW QUESTION 94

- (Exam Topic 2)

Your aunt uses her new Windows 10 laptop to read articles. However, she finds that reading for long periods strains her eyes. You want to adjust the text on the screen to make it easier for your aunt to read for long periods without experiencing eye strain. Which option should you select?

- A. Custom Scaling

- B. Screen Resolution
- C. Clear Type
- D. Change Text Size of Menus

Answer: B

NEW QUESTION 96

- (Exam Topic 2)

Which folder permission allows users to view, change, and delete files?

- A. Full Control
- B. Read and Execute
- C. Modjfy
- D. Read and Write

Answer: A

NEW QUESTION 97

- (Exam Topic 2)

You are an intern at Lucerne Publishing.

The company needs to use multiple versions of Microsoft Office on each machine in the editing department. Which virtualization strategy should the company use?

- A. RDP
- B. App-V
- C. Windows XP Mode
- D. VDI

Answer: B

NEW QUESTION 98

- (Exam Topic 2)

You work for the school library. You are instructed to upgrade all of the library's Windows 8.1 devices to Windows 10 64-bit.

What is the minimum memory the devices must have for you to be able to install Windows 10 64-bit?

- A. 8 GB
- B. 4 GB
- C. 1 GB
- D. 2 GB

Answer: D

Explanation:

References:

<https://www.microsoft.com/en-gb/windows/windows-10-specifications>

NEW QUESTION 99

- (Exam Topic 2)

This question requires that you evaluate the underlined text to determine if it is correct.

You need to install Windows 7 on a computer using a USB drive. You need to use a ZIP to create that drive. Select the correct answer if the underlined text does not make the statement correct. Select "No change is needed" if the underlined text makes the statement correct.

- A. An ISO
- B. A PXE
- C. A ZTI
- D. No change is needed

Answer: A

NEW QUESTION 100

- (Exam Topic 2)

You have a computer with Windows Vista Home Premium installed.

Which two versions of Windows 7 are you able to upgrade to? (Choose two.)

- A. Home Basic
- B. Home Premium
- C. Professional
- D. Ultimate

Answer: BD

NEW QUESTION 103

- (Exam Topic 2)

Your friend asks for your help with upgrading his computer to Windows 10. You plan to perform a clean install of Windows 10 on his computer, which has Windows 8.1 installed.

What should you tell your friend he will be able to find on the computer's hard drive after the installation is complete?

- A. previous Windows8.1 installation
- B. backup copy of all personal files
- C. user profiles migrated to Windows 10
- D. Windows 10 installation files

Answer: D

Explanation:

References: <https://www.cnet.com/how-to/clean-install-windows-10/>

NEW QUESTION 105

- (Exam Topic 2)

Which statement describes code executing in user mode?

- A. It has complete and unrestricted access to the underlying hardware.
- B. It can switch to kernel mode execution to carry out i/o functions.
- C. It can access every memory address and execute any CPU instruction.
- D. It has no ability to directly access hardware or reference memory.

Answer: D

NEW QUESTION 107

- (Exam Topic 2)

Your roommate is having problems with his computer. He cannot get Windows to boot up normally. You start the computer and press F8 to see the Advanced Boot Options.

You want to start the computer in a diagnostic mode that also has access to the Internet. Which boot option should you select?

- A. Safe Mode with Networking
- B. Start Windows Normally
- C. Safe Mode
- D. Safe Mode with Command Prompt

Answer: A

NEW QUESTION 109

- (Exam Topic 2)

Which two tools should you use to gather basic real-time performance information about the computer's system settings? (Choose two.)

- A. System Properties
- B. Task Manager
- C. System Information
- D. Resource Monitor
- E. Computer Management

Answer: BD

NEW QUESTION 110

- (Exam Topic 2)

What is the largest single file that you can store on an NTFS file system?

- A. 4 TB
- B. 8 TB
- C. 16 TB
- D. 32 GB

Answer: C

NEW QUESTION 111

.....

THANKS FOR TRYING THE DEMO OF OUR PRODUCT

Visit Our Site to Purchase the Full Set of Actual 98-349 Exam Questions With Answers.

We Also Provide Practice Exam Software That Simulates Real Exam Environment And Has Many Self-Assessment Features. Order the 98-349 Product From:

<https://www.2passeasy.com/dumps/98-349/>

Money Back Guarantee

98-349 Practice Exam Features:

- * 98-349 Questions and Answers Updated Frequently
- * 98-349 Practice Questions Verified by Expert Senior Certified Staff
- * 98-349 Most Realistic Questions that Guarantee you a Pass on Your FirstTry
- * 98-349 Practice Test Questions in Multiple Choice Formats and Updatesfor 1 Year