

Microsoft

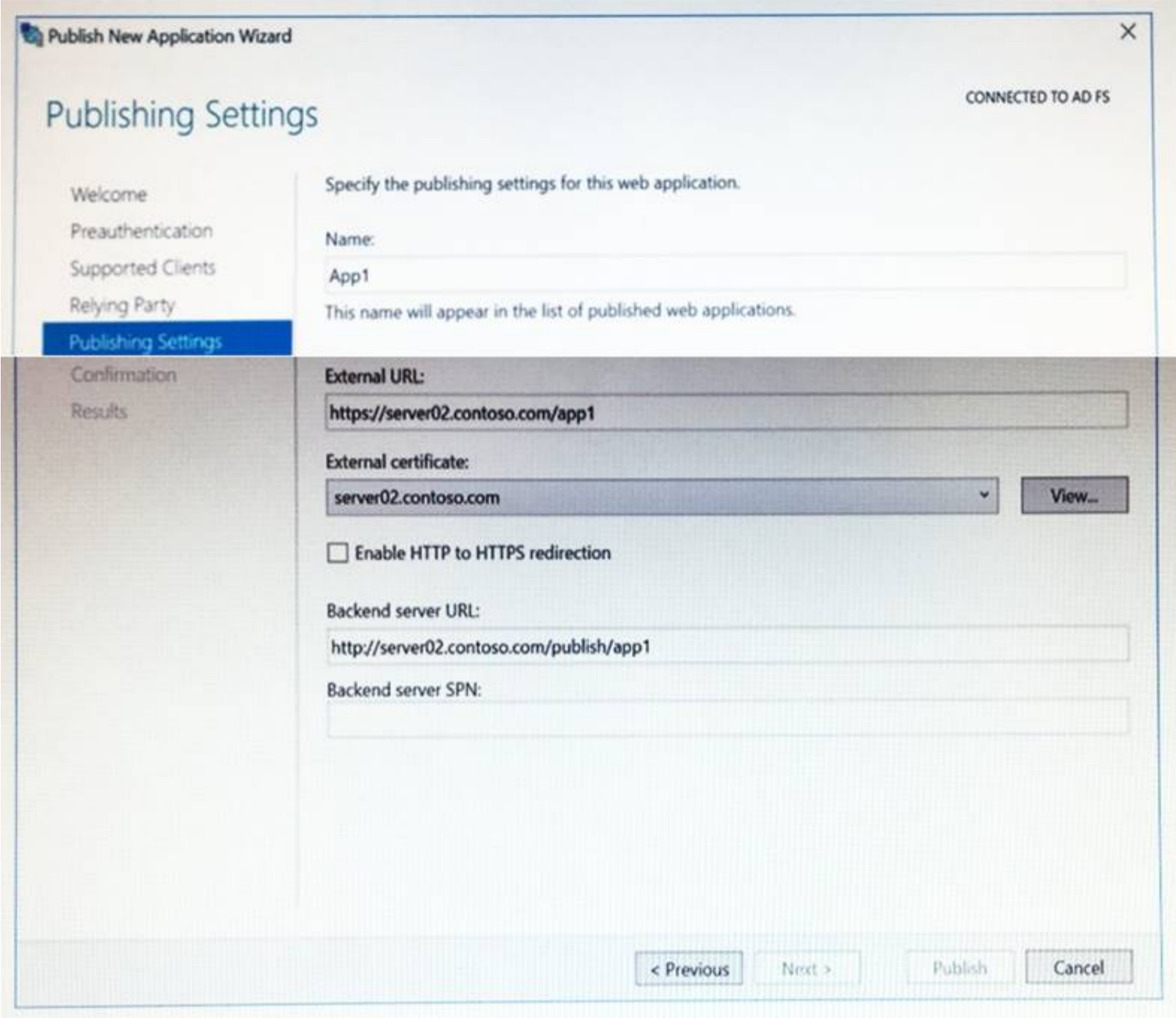
Exam Questions 70-742

Identity with Windows Server 2016



NEW QUESTION 1

You have a server named Server1 that runs Windows Server 2016. Server1 has the Web Application Proxy role service installed. You are publishing an application named App1 that will use Integrated Windows authentication as shown in the following graphic.



Use the drop-down menus to select the answer area choice that completes each statement based on the information presented in the graphic.

Answer Area

Before you can complete the wizard, you must
[answer choice]

▼
change the external certificate
configure the Backend server SPN
select Enable HTTP to HTTPS redirection

To ensure that users can access App1 externally,
you must change the External URL to [answer choice]

▼
https://app1.contoso.com/app1
http://server02.contoso.com/app1
https://server02.contoso.com/publish/app1

- A. Mastered
- B. Not Mastered

Answer: A

Explanation:

Answer Area

Before you can complete the wizard, you must
[answer choice]

▽
change the external certificate
configure the Backend server SPN
select Enable HTTP to HTTPS redirection

To ensure that users can access App1 externally,
you must change the External URL to [answer choice]

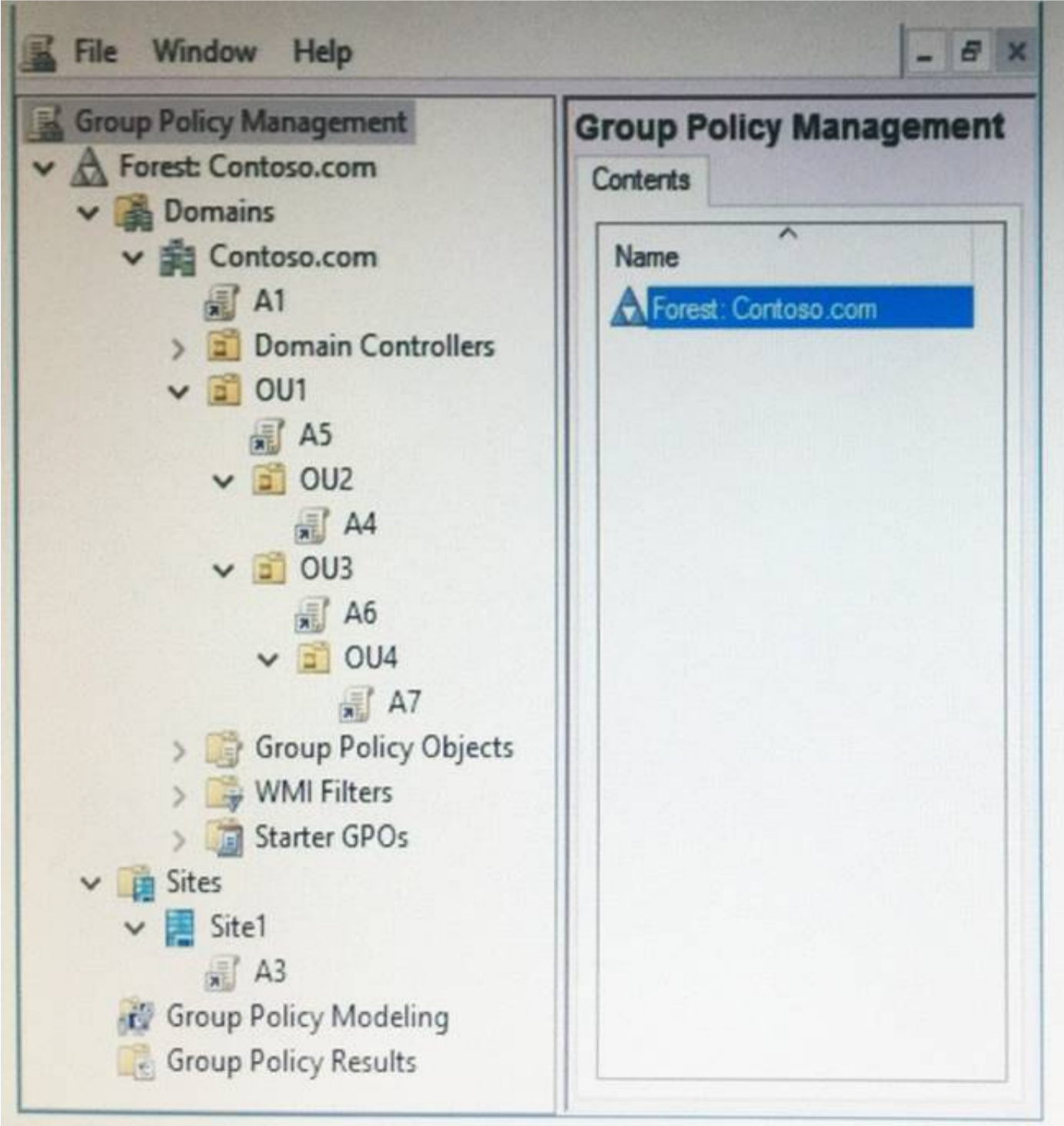
▽
https://app1.contoso.com/app1
http://server02.contoso.com/app1
https://server02.contoso.com/publish/app1

NEW QUESTION 2

Note: This question is part of a series of questions that use the same scenario. For your convenience, the scenario is repeated in each question. Each question presents a different goal and answer choices, but the text of the scenario is exactly the same in each question in this series.

Start of repeated scenario.

Your network contains an Active Directory domain named contoso.com. The domain contains a single site named Site1. All computers are in Site1. The Group Policy objects (GPOs) for the domain are configured as shown in the exhibit. (Click the Exhibit button.)



The relevant users and client computer in the domain are configured as shown in the following table.

Object name	Object type	Object location
Computer	Computer	OU4
User1	User	OU4
User2	User	OU2

End of repeated scenario.

Which five GPOs will apply to User1 in sequence when the user signs in to Computer1? To answer, move the appropriate GPOs from the list to the answer area and arrange them in the correct order.

GPOs

Answer Area

A1

A3

A4

A5

A6

A7

- A. Mastered
- B. Not Mastered

Answer: A

Explanation:

GPOs

Answer Area

A1

A3

A4

A5

A6

A7

A3

A1

A5

A6

A7

NEW QUESTION 3

Note: This question is part of a series of questions that use the same or similar answer choices. An answer choice may be correct for more than one question in the series. Each question is independent of the other questions in this series.

Information and details provided in a question apply only to that question.

Your network contains an Active Directory domain named contoso.com. The domain contains 5,000 user accounts.

You have a Group Policy object (GPO) named DomainPolicy that is linked to the domain and a GPO named DCPolicy that is linked to the Domain Controllers organizational unit (OU).

You need to ensure that the members of the Backup Operators group can back up domain controllers. What should you do?

- A. From the Computer Configuration node of DCPolicy, modify Security Settings.
- B. From the Computer Configuration node of DomainPolicy, modify Security Settings.
- C. From the Computer Configuration node of DomainPolicy, modify Administrative Templates.
- D. From the User Configuration node of DCPolicy, modify Security Settings.

- E. From the User Configuration node of DomainPolicy, modify Folder Redirection.
- F. From user Configuration node of DomainPolicy, modify Administrative Templates.
- G. From Preferences in the User Configuration node of DomainPolicy, modify Windows Settings.
- H. From Preferences in the Computer Configuration node of DomainPolicy, modify Windows Settings.

Answer: D

NEW QUESTION 4

Note: This question is part of a series of questions that present the same scenario. Each question in the series contains a unique solution that might meet the stated goals. Some question sets might have more than one correct solution, while others might not have a correct solution.

After you answer a question in this section, you will NOT be able to return to it. As a result, these questions will not appear in the review screen.

Your network contains an Active Directory domain named contoso.com. A user named User1 is in an organizational unit (OU) named OU1.

You are troubleshooting a folder access issue for User1.

You need a list of groups to which User1 is either a direct member or an indirect member. Solution: You run `dsget user cn=User1, ou=OU1, dc=contoso, dc=com -memberof -expand`. Does this meet the goal?

- A. Yes
- B. No

Answer: A

Explanation:

DSGET displays the properties of a user in the directory. There are two variations of this command. The first variation displays the properties of multiple users. The second variation displays the group membership information of a single user.

To show the list of groups, recursively expanded, to which the user Mike Danseglio belongs, type: `dsget user "CN=Mike Danseglio,CN=users,dc=ms,dc=tld" -memberof -expand`

References:

<https://docs.microsoft.com/en-us/previous-versions/windows/it-pro/windows-server-2008-R2-and-2008/cc73253>

NEW QUESTION 5

Your network contains an Active Directory domain named contoso.com. A Group Policy object (GPO) named GPO1 is linked to contoso.com.

GPO1 has computer configuration policies, user configuration policies and user preferences configured.

You need to ensure that the user preferences in GPO1 apply only to users who sign in to computers that runs Windows 10. All the other settings in GPO1 must be applied, regardless of the computer to which the user signs in.

What should you configure?

- A. Security Settings
- B. WMI filtering
- C. Security Filtering
- D. item-level targeting

Answer: D

NEW QUESTION 6

Your network contains an Active Directory named contoso.com

You have three top-level organizational units (OUs) named OU1, OU2 and OU3. OU1 contains user accounts. OU2 contains the computer accounts for shared public computers. OU3 contains the computer accounts for laptops.

You have two Group Policy objects (GPOs) named GPO1 and GP02. GPO1 is linked to OU1. GP02 is linked to OU2.

You need to prevent the user settings in GPO1 from being applied when a user signs in to a shared public computer. If a user signs in to a laptop, the user settings in GPO1 must be applied.

What should you configure?

- A. inheritance blocking
- B. Security Filtering
- C. loopback processing
- D. GPO link enforcement

Answer: C

NEW QUESTION 7

Your network contains an Active Directory domain named contoso.com.

All the accounts of the users in the sales department are in an organizational unit (OU) named SalesOU. An application named App1 is deployed to the user accounts in SalesOU by using a Group Policy object

(GPO) named SalesGPO. You need to set the registry value of `\HKEY_CURRENT_USER\Software\App1\Collaboration` to 0.

Solution: You add a user preference that has an Update action. Does this meet the goal?

- A. Yes
- B. No

Answer: A

NEW QUESTION 8

Your network contains an Active Directory domain named contoso.com.

The user account for a user named User1 is in an organizational unit (OU) named OU1. You need to enable User1 to sign in as `user1@adatum.com`.

Solution: From Active Directory Domains and Trusts, you configure an alternative UPN suffix, From Active Directory Administrative Center, you configure the User UPN logon property of User1.

Does this meet the goal?

- A. Yes
- B. No

Answer: A

NEW QUESTION 9

Your network contains an Active Directory forest named contoso.com. All domain controllers run Windows Server 2012 R2. You deploy a new server named Server1 that runs Windows Server 2016.

A server administrator named ServerAdmin01 is a member of the Domain users group. You add ServerAdmin01 to the Administrators group on Server1. ServerAdmin01 signs in to Server1 and successfully configures a new Active Directory flights Management Services (AD RMS) cluster.

You need to ensure that clients can discover the AD RMS cluster by querying Active Directory. What should you do?

- A. Register a Service Connection Point (SCP).
- B. Modify the Security settings of the computer account of Server1.
- C. Update the Active Directory schema.
- D. Upgrade one domain controller to Windows Server 2016.

Answer: A

NEW QUESTION 10

Your network contains an Active Directory domain named contoso.com. The domain contains an Active Directory Federation Services (AD FS) server named Server1.

On a standalone server named Server2. You install and configure the Web Application Proxy.

You have an internal web application named WebApp1. AD FS has a replying party trust for WebApp1. You need to provide external users with access to WebApp1. Authentication to WebApp1, must use AD FS preauthentication.

Which tool should you use to publish webapp1?

- A. Remote Access Management on Server2
- B. AD FS Management on Server2
- C. Routing and Remote Access on Server1
- D. Remote Access Management on Server1
- E. AD FS Management on Server1

Answer: E

NEW QUESTION 10

Your company has multiple branch offices.

The network contains an Active Directory domain named contoso.com.

In one of the branch offices, a new technician is hired to add computers to the domain.

After successfully joining multiple computers to the domain, the technician fails to join anymore computers to the domain.

You need to ensure that the technician can join an unlimited number of computers to the domain. What should you do?

- A. Modify the Security settings of the technician's user account.
- B. Modify the Security settings of the Computers container.
- C. Configure the technician's user account as a managed service account.
- D. Run the redircmp.exe command.

Answer: B

NEW QUESTION 13

Your network contains an Active Directory forest. The forest contains a domain named contoso.com. The domain contains three domain controllers.

A domain controller named lon-dc1 fails. You are unable to repair lon-dc1.

You need to prevent the other domain controllers from attempting to replicate to lon-dc1.

Solution: From Active Directory Domains and Trusts, you transfer the operations master roles from lon-dc1. Does this meet the goal?

- A. Yes
- B. No

Answer: B

NEW QUESTION 16

Your network contains an Active Directory forest named contoso.com. The forest contains 10 domains. The root domain contains a global catalog server named DC1.

You remove the global catalog server role from DC1.

You need to decrease the size of the Active Directory database on DC1.

Solution: You restart DC1 in Directory Services Repair Mode. You run compact.exe, and then restart DC1. Does this meet the goal?

- A. Yes
- B. No

Answer: B

Explanation:

You need to run ntdsutil.exe with the 'compact to' option. References:

<https://theitbros.com/active-directory-database-compact-defrag/>

NEW QUESTION 19

Your company has multiple offices.
The network contains an Active Directory domain named contoso.com. An Active Directory site exists for each office. All of the sites connect to each other by using DEFAULTIPSITELINK.
The company plans to open a new office. The new office will have a domain controller and 100 client computers.
You install Windows Server 2016 on a member server in the new office. The new server will become a domain controller.
You need to deploy the domain controller to the new office. The solution must ensure that the client computers in the new office will authenticate by using the local domain controller.
Which three actions should you perform next in sequence? To answer, move the appropriate actions from the list of actions to the answer area and arrange them in the correct order.

Actions	Answer Area
Create a new site object.	
Create a new connection object.	
Promote the member server to a domain controller.	
Create a new subnet object.	
Move the server object of the domain controller.	

- A. Mastered
- B. Not Mastered

Answer: A

Explanation:

Actions	Answer Area
Create a new site object.	Create a new site object.
Create a new connection object.	Create a new subnet object.
Promote the member server to a domain controller.	Promote the member server to a domain controller.
Create a new subnet object.	
Move the server object of the domain controller.	

NEW QUESTION 20

Your network contains an Active Directory domain named contoso.com.
You create a domain security group named Group1 and add several users to it.
You need to force all of the users in Group1 to change their password every 35 days. The solution must affect the Group1 users only.
What should you do?

- A. From Windows PowerShell, run the Set-ADDomain cmdlet, and then run the Set-ADAccountPassword cmdlet.
- B. Modify the Password Policy settings in a Group Policy object (GPO) that is linked to the domain, and then filter the GPO to Group1 only.
- C. Create a forms authentication provider, and then set the forms authentication credentials.
- D. From Active Directory Administrative Center, create a Password Setting object (PSO).

Answer: D

NEW QUESTION 25

Note: This question is part of a series of questions that present the same scenario. Each question in the series contains a unique solution that might meet the stated goals. Some question sets might have more than one correct solution, while others might not have a correct solution.
After you answer a question in this section, you will NOT be able to return to it. As a result, these questions will not appear in the review screen.
Your network contains an Active Directory domain named contoso.com. The domain contains a server named Server1 that runs Windows Server 2016. The computer account for Server1 is in organizational unit (OU) named OU1.
You create a Group Policy object (GPO) named GPO1 and link GPO1 to OU1.
You need to add a domain user named User1 to the local Administrators group on Server1.
Solution: From the Computer Configuration node of GPO1, you configure the Local Users and Groups preference.
Does this meet the goal?

- A. Yes
- B. No

Answer: A

NEW QUESTION 27

Your network contains an Active Directory domain named contoso.com. The domain contains a read-only domain controller (RODC) named R0DC1. You need to retrieve a list of accounts that have their password cached on RODC1. Which command should you run?

- A. netdom.exe
- B. ntdsutil.exe
- C. repadmin.exe
- D. dcdiag.exe

Answer: C

Explanation:

[https://technet.microsoft.com/en-us/library/rodc-guidance-for-administering-the-password-replication-policy\(v=](https://technet.microsoft.com/en-us/library/rodc-guidance-for-administering-the-password-replication-policy(v=)

NEW QUESTION 31

Your network contains an Active Directory domain named adatum.com. The domain contains a security group named G_Research and an organizational unit (OU) named OU_Research.

All the users in the research department are members of G_Research and their user accounts are in OU_Research.

You need to ensure that all the research department users change their password every 28 days and enforce a complex password that is 12 characters long. What should you do?

- A. From a Group Policy Management, create and link a Group Policy object (GPO) to OU_Research.Modify the password policy in the GPO.
- B. From a Group Policy Management, create and link a Group Policy object (GPO) to the domain.
- C. Modify the password policy in the GP.
- D. Filter the GPO to apply to G_Research only.
- E. From Active Directory Users and Computers, modify the properties of the Password Settings Container.
- F. From Active Directory Administrative Center, create a new Password Settings object (PSO).

Answer: D

NEW QUESTION 36

Your network contains an Active Directory domain named contoso.com.

You need to create a central store for Group Policy administrative templates. What should you use?

- A. Server Manager
- B. File Explorer
- C. Dcgpofix.exe
- D. Group Policy Management Console (GPMC)

Answer: B

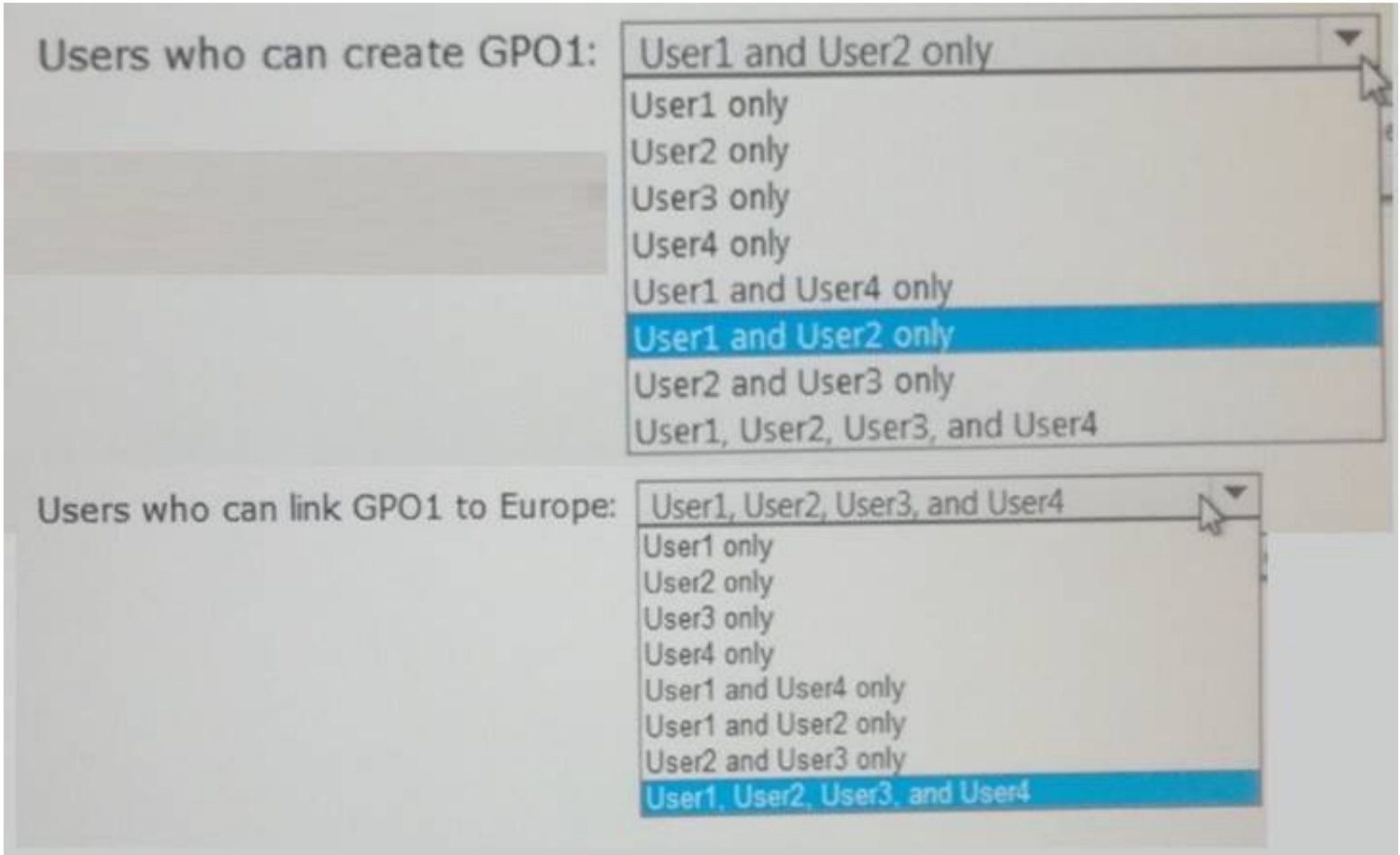
NEW QUESTION 39

Your network contains two network domains sales.fabrikam.com, and contoso.com, You recently added a site named Europe.

The forest contains four users who are members of the groups shown in the following table.

User name	Member of	Domain
User1	Domain Admins	Fabrikam.com
User2	Enterprise Admins	Fabrikam.com
User3	Domain Admins	Sales.fabrikam.com
User4	Domain Admins	Contoso.com

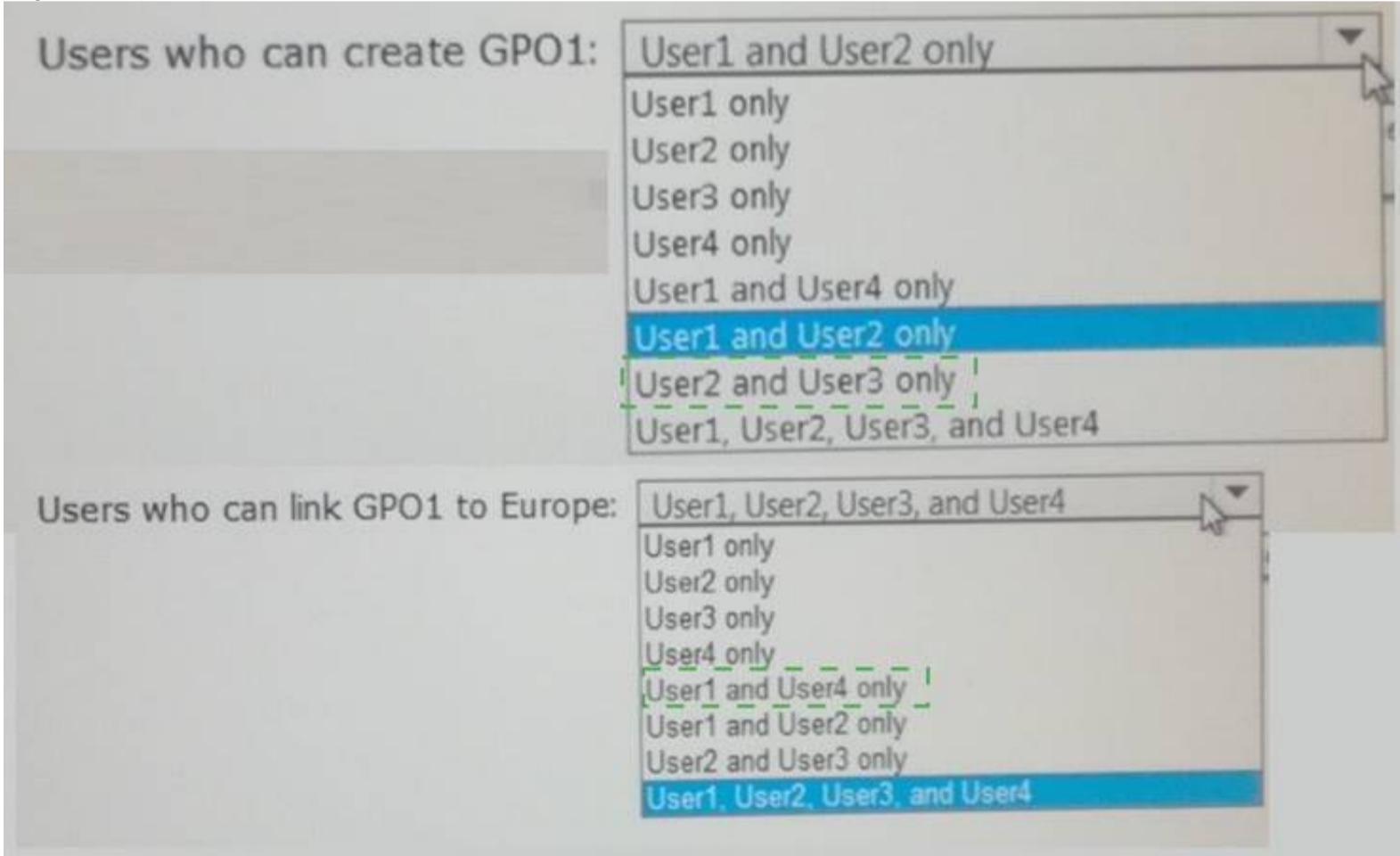
You need to create a Group Policy object (GPO) named GP01 and to link GPO1 to the Europe site. Which users can perform each task? To answer, select the appropriate options in the answer area. NOTE: Each correct selection is worth one point



- A. Mastered
- B. Not Mastered

Answer: A

Explanation:



NEW QUESTION 40

You have a server named Server1 that runs Windows Server 2016. Server1 has the Web Application Proxy role service installed. You publish an application named App1 by using the Web Application Proxy. You need to change the URL that users use to connect to App1 when they work remotely. Which command should you run? To answer, select the appropriate options in the answer area.

Answer Area

Set-WebApplicationProxyApplication

Set-WebApplicationProxyConfiguration

Set-WebApplicationProxySslCertificate

- ID 874A4543-7983-77A3-1E6D-1163E7419AC1

-ADFSUrl

-BackendServerUrl

-ExternalURL

https://SP.Contoso.com/

- A. Mastered
- B. Not Mastered

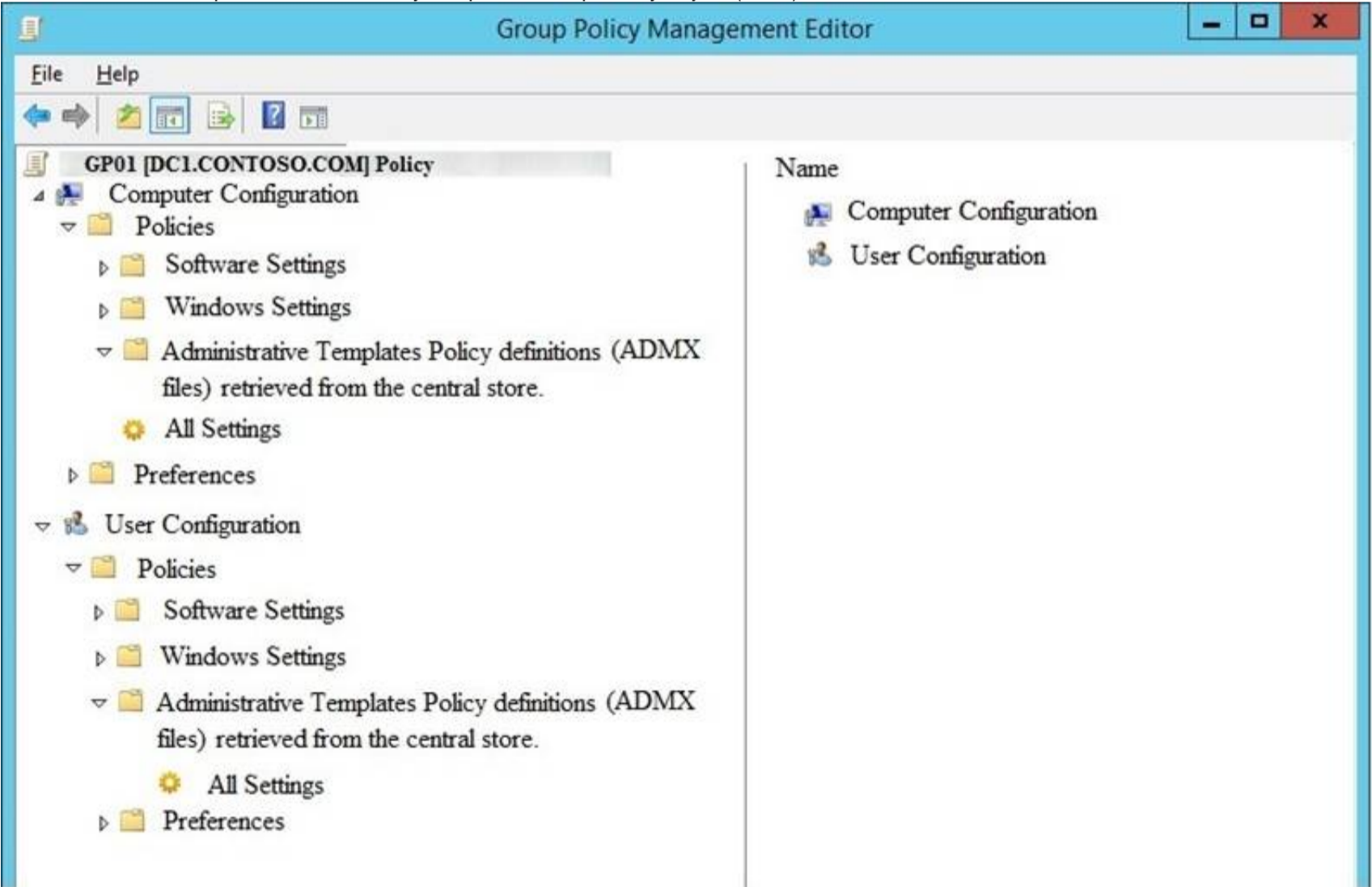
Answer: A

Explanation:

The Set-WebApplicationProxyApplication cmdlet modifies settings of a web application published through Web Application Proxy. Specify the web application to modify by using its ID. Note that the method of preauthentication cannot be changed. The cmdlet ensures that no other applications are already configured to use any specified ExternalURL or BackendServerURL.
References: <https://technet.microsoft.com/itpro/powershell/windows/wap/set-webapplicationproxyapplication>

NEW QUESTION 43

Your network contains an Active Directory domain named contoso.com. The domain contains a member server named Server1 and a domain controller named DC1. Both servers run Windows Server 2016. Server1 is used to perform administrative tasks, including managing Group Policies. After maintenance is performed on DC1, you open a Group Policy object (GPO) from Server1 as shown in the exhibit.



You need to be able to view all of the Administrative Templates settings in GPO1. What should you do?

- A. From File Explorer, copy the administrative templates from\\contoso.com\\SYSVOL\\contoso.com\\Policies to the PolicyDefinitions folder on Server1.
- B. From File Explorer, delete \\contoso.com\\SYSVOL\\contoso.com\\Policies\\PolicyDefinitions.
- C. From File Explorer, delete the PolicyDefinitions folder from Server1.
- D. From Group Policy Management, configure WMI Filtering for GPO1.

Answer: B

NEW QUESTION 45

Your network contains an Active Directory forest. The forest functional level is Windows Server 2016. You have a failover cluster named Cluster1. Cluster1 has two nodes named Server1 and Server2. All the optional features in Active Directory are enabled.

A junior administrator accidentally deletes the computer object named Cluster1. You discover that Cluster1 is offline. You need to restore the operation of Cluster1 in the least amount of time possible. What should you do?

- A. Run the Enable-ADAccount cmdlet from Windows PowerShell.
- B. Perform an authoritative restore by running ntdutil.exe.
- C. Perform a tombstone reanimation by running ldp.exe.
- D. Recover a deleted object from the Active Directory Recycle Bin.

Answer: D

NEW QUESTION 48

Your network contains an Active Directory domain named adatum.com. The domain contains a security group named G_Research and an organizational unit (OU) named OU_Research.

All the users in the research department are members of G_Research and their user accounts are in OU_Research.

You need to ensure that all the research department users change their password every 28 days and enforce a complex password that is characters long. What should you do?

- A. From Group Policy Management, create and link a Group Policy object (GPO) to the domain
- B. Modify the password policy in the GPO Filter the GPO to apply to G_Research only.
- C. From Active Directory Administrative Center, create a new Password Settings object (PSO).
- D. From Active Directory Users and Computers, modify the properties of the Password Settings Container.
- E. From Group Policy Management, create and link a Group Policy object (GPO) to OU_Research
- F. Modify the password policy in the GPO.

Answer: C

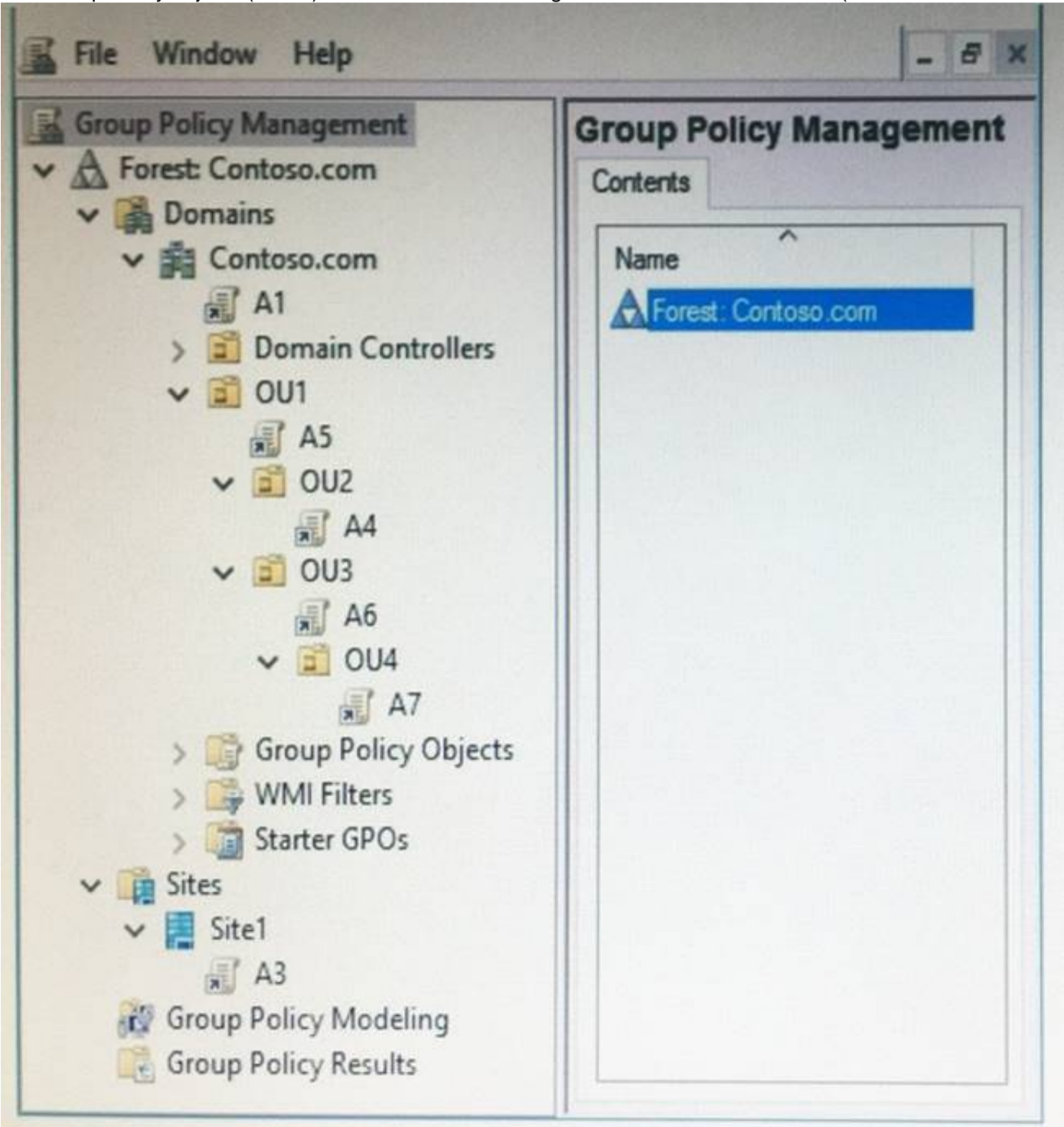
NEW QUESTION 49

Note: This question is part of a series of questions that use the same scenario. For your convenience, the scenario is repeated in each question. Each question presents a different goal and answer choices, but the text of the scenario is exactly the same in each question in this series.

Start of repeated scenario.

Your network contains an Active Directory domain named contoso.com. The domain contains a single site named Site1. All computers are in Site1.

The Group Policy objects (GPOs) for the domain are configured as shown in the exhibit. (Click the Exhibit button.)



The relevant users and client computer in the domain are configured as shown in the following table.

Object name	Object type	Object location
Computer	Computer	OU4
User1	User	OU4
User2	User	OU2

End of repeated scenario.

You are evaluating what will occur when you set User Group Policy loopback processing mode to Replace in A7.

Which GPO or GPOs will apply to User2 when the user signs in to Computer1 after loopback processing is configured?

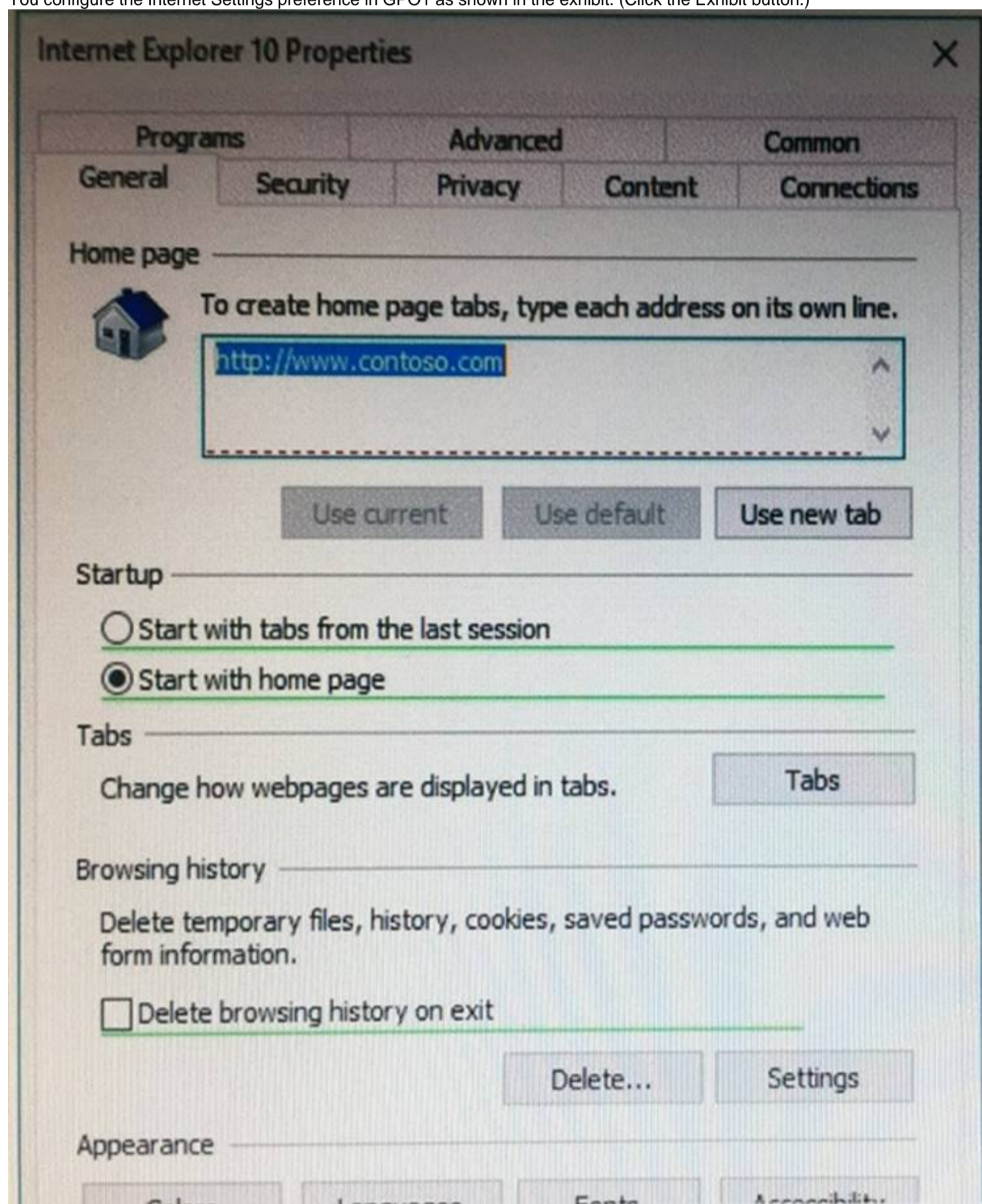
- A. A1 and A7 only
- B. A3, A1, A5, A6, and A7
- C. A3, A5, A1, and A7 only
- D. A7 only

Answer: D

NEW QUESTION 52

Your network contains an Active Directory domain named contoso.com. The domain contains a Group Policy object (GPO) named GPO1.

You configure the Internet Settings preference in GPO1 as shown in the exhibit. (Click the Exhibit button.)



A user reports that the homepage of Internet Explorer is not set to http://www.contoso.com. You confirm that the other settings in GPO1 are applied.

You need to configure GPO1 to set the Internet Explorer homepage. What should you do?

- A. Edit the GPO1 preference and press F5.
- B. Modify Security Settings for GPO1.
- C. Modify WMI Filtering for GPO1.
- D. Modify the GPO1 preference to use item-level targeting.

Answer: A

Explanation:

The red dotted line under the homepage URL means that setting is disabled. Pressing F5 enables all settings.

NEW QUESTION 54

Your network contains an Active Directory domain named contoso.com. The domain contains a user named User1, a group named Group1, and an Organizational unit (OU) named OU1.

You need to enable User1 to link Group Policies to OU1.

Solution: From Active Directory Users and Computers, you add User1 to the Group Policy Creator Owner group.

Does this meet the goal?

- A. Yes
- B. No

Answer: B

NEW QUESTION 57

Your network contains an Active Directory domain named contoso.com. You need to create a central store for Group Policy administrator templates. What should you use?

- A. Dcgpofix.exe
- B. Copy-Item
- C. Copy-GPO
- D. Group Policy Management Console (GPMC)

Answer: B

NEW QUESTION 62

Your network contains an Active Directory forest. The forest contains an Active Directory Federation Services (AD FS) deployment.

The AD FS deployment contains the following.

- An AD FS server named server1.contoso.com that runs Windows Server 2016
- A Web Application Proxy used to publish AD FS
- A UPN that uses the contoso.com suffix
- A namespace named adfs.contoso.com

You create a Microsoft Office 365 tenant named contoso.onmicrosoft.com. You use Microsoft Azure Active Directory Connect (AD Connect) to synchronize all of the users and the UPNs from the contoso.com forest to Office 365.

You need to configure federation between Office 365 and the on-premises deployment of Active Directory. Which three commands should you run in sequence from Server1? To answer, move the appropriate commands from the list of commands to the answer area and arrange them in the correct order.

Commands	Answer Area
<div>Convert-MsolDomainToFederated -DomainName contoso.com</div>	
<div>Enter-PSSession -Name Office365</div>	
<div>Convert_MsolDomainToFederated -DomainName adfs.contoso.com</div>	
<div>Set-MsolADFSContext -Computer server1contoso.com</div>	
<div>Connect-MsolService</div>	
<div>Set-MsolADFSContext -Computer contoso.com</div>	

- A. Mastered
- B. Not Mastered

Answer: A

Explanation:

Commands	Answer Area
Convert-MsolDomainToFederated -DomainName contoso.com	Connect-MsolService
Enter-PSSession -Name Office365	Set-MsolADFSContext -Computer server1contoso.com
Convert_MsolDomainToFederated -DomainName adfs.contoso.com	Convert-MsolDomainToFederated -DomainName contoso.com
Set-MsolADFSContext -Computer server1contoso.com	
Connect-MsolService	
Set-MsolADFSContext -Computer contoso.com	

NEW QUESTION 64

Your network contains an Active Directory domain named contoso.com. Domain users use smart cards to sign in to their client computer. Some users report that it takes a long time to sign in to their computer and that the logon attempt times out, so they must restart the sign in process. You discover that the issues to checking the certificate revocation list (CRL) of the smart card certificates. You need to resolve the issue without diminishing the security of the smart card logons. What should you do?

- A. From the properties of the smart card's certificate template, modify the Request Handling settings.
- B. From the properties of the smart card's certificate template, modify the Issuance Requirements settings.
- C. Deactivate certificate revocation checks on the computers.
- D. Implement an Online Certification Status Protocol (OCSP) responder.

Answer: D

NEW QUESTION 69

Your network contains an Active Directory domain named contoso.com. The domain contains two servers named Server1 and Server2 that run Windows Server 2016. The computer accounts of Server1 and Server2 are in the Computers container. A Group Policy object (GPO) named GPO1 is linked to the domain. GPO1 has multiple computer settings defined and has following configurations.

DisplayName:	GPO1
Domain Name:	Contoso.com
Owner:	CONTOSO\Domain Admins
Id:	bf3b4d96-59f6-4d0f-84c3-b9c37180b9ca
GpoStatus:	UserSettingsDisabled
Description:	
CreationTime:	2/18/2017 7:11:30 AM
ModificationTime:	2/18/2017 9:33:04 AM
UserVersion:	AD Version 18, SysVol Version: 18
ComputerVersion:	AD Version 6, SysVol Version: 6
WmiFilter:	WMI1

An administrator discovers that GPO1 is not applied to Server1. GPO1 is applied to Server2. Which configuration possibly prevents GPO1 from being applied to Server1?

- A. The permissions on the domain object of contoso.com
- B. The WMI filter settings
- C. The Enforced setting of GPO1
- D. The GpoStatus property

Answer: B

NEW QUESTION 71

You network contains an Active Directory domain named contoso.com. The domain contains 1,000 desktop computers and 500 laptops. An organizational unit (OU) named OU1 contains the computer accounts for the desktop computers and the laptops. You create a Windows PowerShell script named Script1.ps1 that removes temporary files and cookies. You create a Group Policy object (GPO) named GPO1 and

link GPO1 to OU1.
You need to run the script once weekly only on the laptops. What should you do?

- A. In GPO1, create a File preference that uses item-level targeting.
- B. In GPO1, create a Scheduled Tasks preference that uses item-level targeting.
- C. In GPO1, configure the File System security polic
- D. Attach a WMI filter to GPO1.
- E. In GPO1, add Script1.ps1 as a startup scrip
- F. Attach a WMI filter to GPO1.

Answer: B

NEW QUESTION 74

Note: This question is part of a series of questions that present the same scenario. Each question in the series contains a unique solution that might meet the stated goals. Some question sets might have more than one correct solution, while others might not have a correct solution.
After you answer a question in this section, you will NOT be able to return to it. As a result, these questions will not appear in the review screen.
You network contains an Active Directory forest named contoso.com. The forest contains an Active Directory Rights Management Services (AD RMS) deployment. Your company establishes a partnership with another company named Fabrikam, Inc. The network of Fabrikam contains an Active Directory forest named fabrikam.com and an AD RMS deployment.
You need to ensure that the users in contoso.com can access rights protected documents sent by the users in fabrikam.com.
Solution: From AD RMS in fabrikam.com, you configure contoso.com as a trusted publisher domain. Does this meet the goal?

- A. Yes
- B. No

Answer: B

Explanation:
Contoso needs to trust Fabrikam.

NEW QUESTION 77

You network contains an Active Directory forest. The forest contains an Active Directory Federation Services (AD FS) deployment.
The AD FS deployment contains the following:
* An AD FS server named server1.contoso.com that runs Windows Server 2016
* A Web Application Proxy used to publish AD FS
* A LIPN that uses the contoso.com suffix
* A namespace named adfs.contoso.com
You create a Microsoft Office 365 tenant named contoso.onmicrosoft.com. You use Microsoft Azure Active Directory Connect (AD Connect) to synchronize all of the users and the UPNs from the contoso.com forest to Office 365.
You need to configure federation between Office 365 and the on-premises deployment of Active Directory. Which three commands should you run in sequence from Server1? To answer, move the appropriate commands from the list of commands to the answer area and arrange them in the correct order.

Commands	Answer Area
Convert-MsolDomainToFederated -DomainName contoso.com	
Enter-PSSession -Name Office365	
Convert_MsolDomainToFederated -DomainName adfs.contoso.com	
Set-MsolADFSContext -Computer server1contoso.com	
Connect-MsolService	
Set-MsolADFSContext -Computer contoso.com	

- A. Mastered
- B. Not Mastered

Answer: A

Explanation:

Commands	Answer Area
Convert-MsolDomainToFederated -DomainName contoso.com	Connect-MsolService
Enter-PSSession -Name Office365	Set-MsolADFSContext -Computer server1contoso.com
Convert_MsolDomainToFederated -DomainName adfs.contoso.com	Convert-MsolDomainToFederated -DomainName contoso.com
Set-MsolADFSContext -Computer server1contoso.com	
Connect-MsolService	
Set-MsolADFSContext -Computer contoso.com	

NEW QUESTION 78

Note: This question is part of a series of questions that use the same scenario. For you convenience, the scenario is repeated in each question. Each question presents a different goal and answer choices, but the text of the scenario is exactly the same in each question in this series.

Start of repeated scenario.

You work for a company named Contoso, Ltd.

The network contains an Active Directory forest named contoso.com. A forest trust exists between contoso.com and an Active Directory forest named adatum.com.

The contoso.com forest contains the objects configured as shown in the following table.

Object name	Object type	Group scope	Group type
User1	User	<i>Not applicable</i>	<i>Not applicable</i>
User2	User	<i>Not applicable</i>	<i>Not applicable</i>
Computer1	Computer	<i>Not applicable</i>	<i>Not applicable</i>
Group1	Group	Domain local	Security
Group2	Group	Domain local	Security
Group3	Group	Universal	Security
Group4	Group	Global	Security
Group5	Group	Universal	Security

Group1 and Group2 contain only user accounts.

Contoso hires a new remote user named User3. User3 will work from home and will use a computer named Computer3 that runs Windows 10. Computer3 is currently in a workgroup.

An administrator named Admin1 is a member of the Domain Admins group in the contoso.com domain. From Active Directory Users and Computers, you create an organizational unit (OU) named OU1 in the contoso.com domain, and then you create a contact named Contact1 in OU1.

An administrator of the adatum.com domain runs the Set-ADUser cmdlet to configure a user named User1 to have a user logon name of User1@litwareinc.com.

End of repeated scenario.

You need to ensure that User2 can add Group4 as a member of Group5. What should you modify?

- A. the group scope of Group5
- B. the Managed By settings of Group4
- C. the group scope of Group4
- D. the Managed By settings of Group5

Answer: D

NEW QUESTION 79

You create a user account that will be used as a template for new user accounts.

Which setting will be copied when you copy the user account from Active Directory Users and Computers?

- A. the Department attribute
- B. the Description attribute
- C. Permission
- D. Remote Desktop Services Profile

Answer: A

Explanation:

A user template in Active Directory can be used if you are creating users for a specific department, with exactly the same properties, and membership to the same user groups. A user template is nothing more than a disabled user account that has all these settings already in place.

References:

<http://www.rebeladmin.com/2014/07/create-users-with-user-templates-in-ad/>

NEW QUESTION 82

You deploy a new certification authority (CA) to a server that runs Windows Server 2016. You need to configure the CA to support recovery of certificates. What should you do first?

- A. Modify the Recovery Agents settings from the properties of the CA.
- B. Assign the Request Certificates permission to the user account that will be responsible for recovering certificates.
- C. Configure the Key Recovery Agent template as a certificate template to issue.
- D. Modify the extensions of the OCSP Response Signing template.

Answer: C

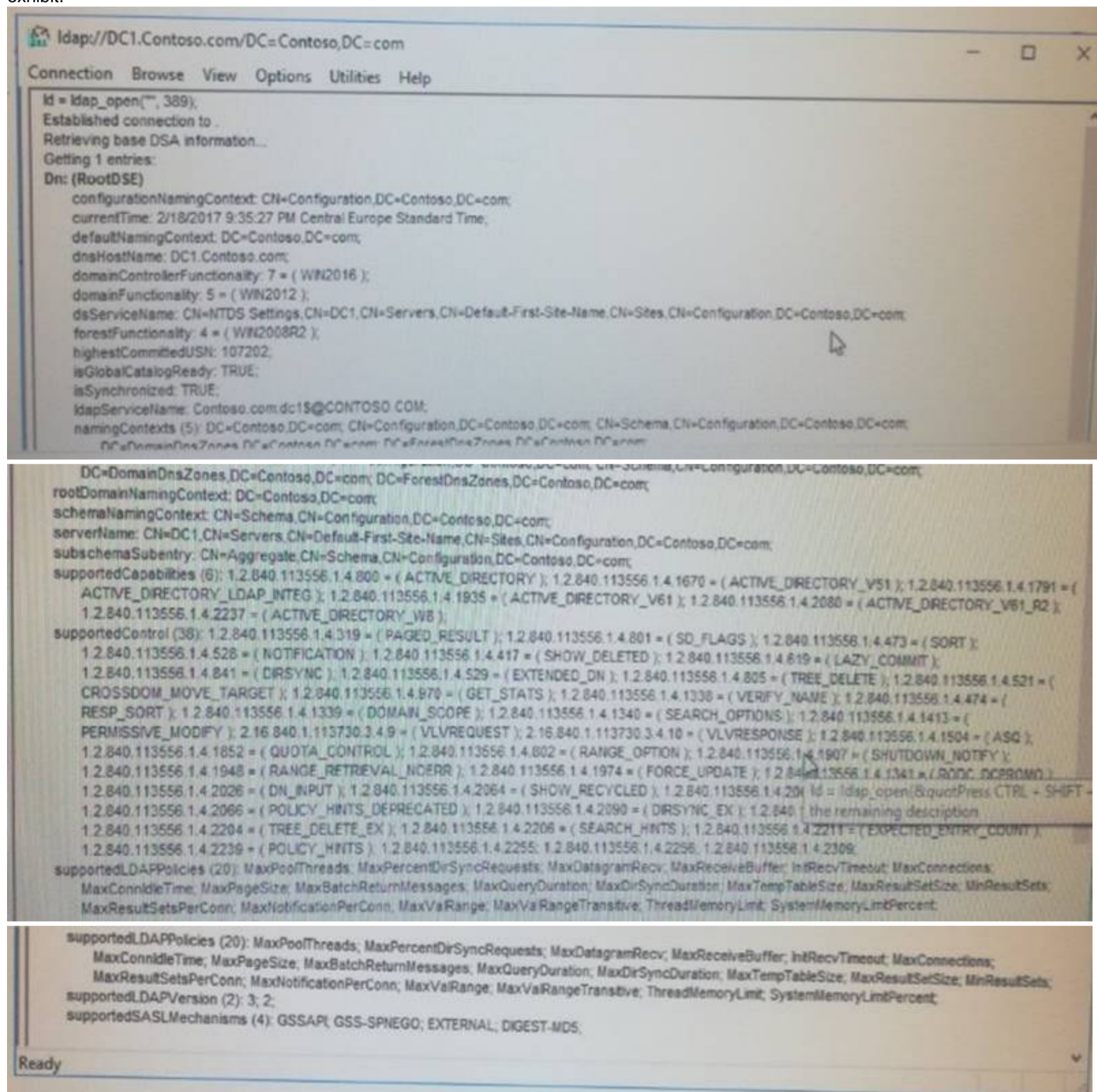
Explanation:

References:

<http://markgossa.blogspot.co.uk/2017/03/enable-key-archival-in-server-2012-r2.html>

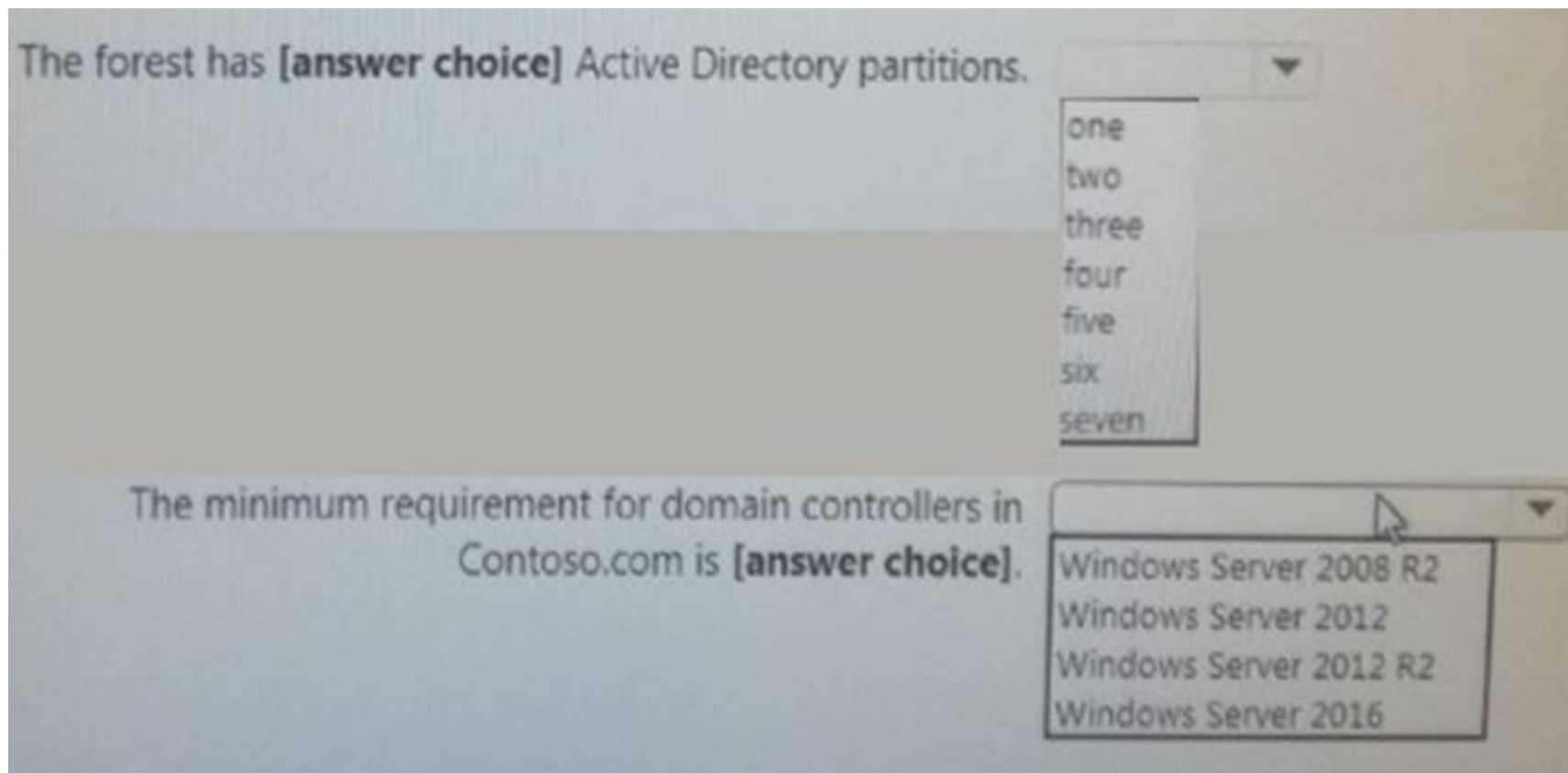
NEW QUESTION 84

Your network contains an Active Directory forest named contoso.com. They connect to the forest by using ldp.exe and receive the output as shown in the following exhibit.



Use drop-down menus to select the answer choice that completes each statement based on the information presented in the graphic.

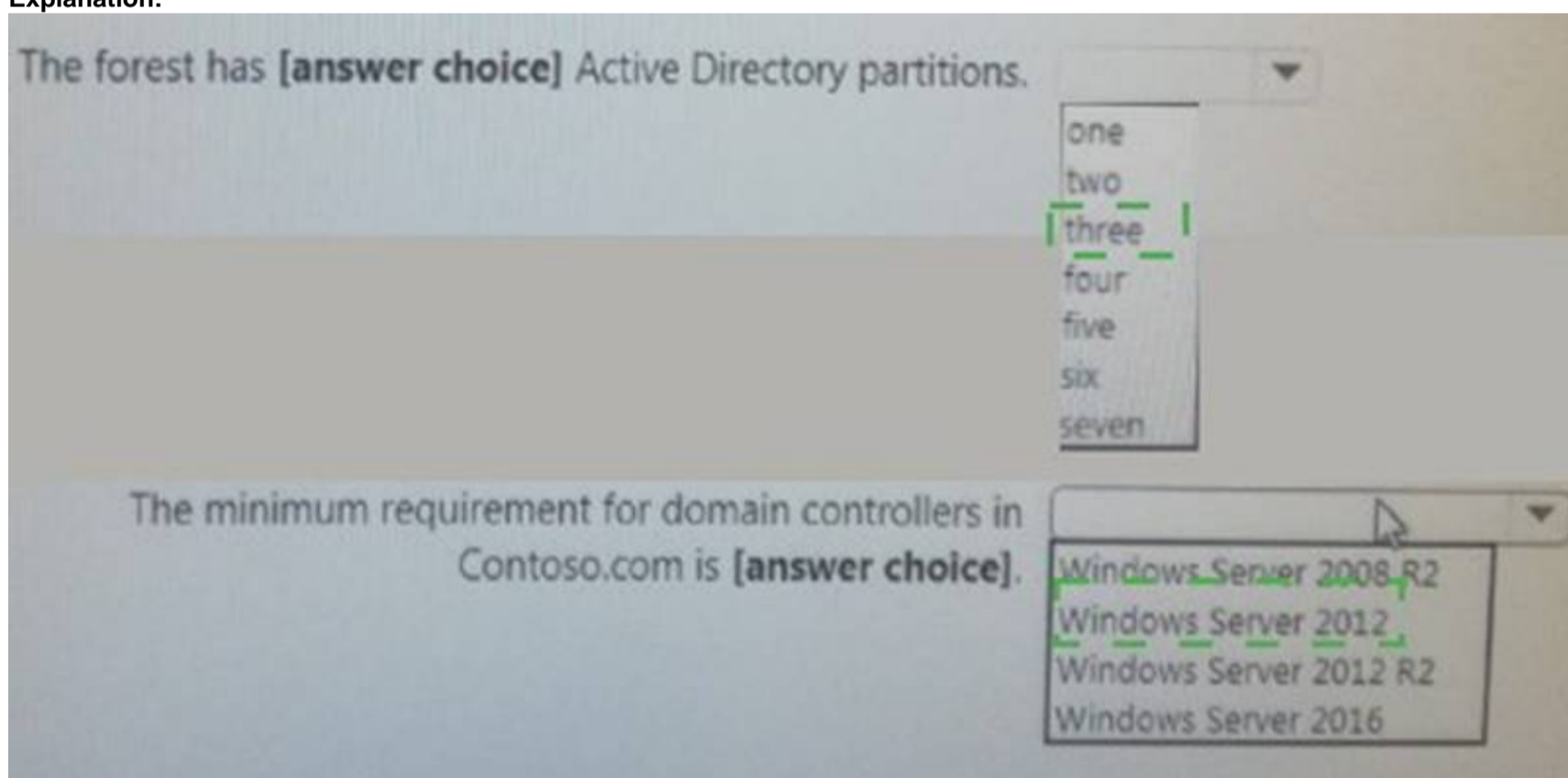
NOTE: Each correct selection is worth one point.



- A. Mastered
- B. Not Mastered

Answer: A

Explanation:



NEW QUESTION 87

Your network contains an Active Directory forest.

Some users report experiencing difficulties signing in to domain controllers. You suspect that the service location (SRV) records might be causing the issue.

What are two possible commands that you can run to verify the SRV records? Each correct answer presents a complete solution.

NOTE. Each correct selection is worth one point.

- A. dcdiag.exe /test:connectivity
- B. dnscmd /info
- C. dnscmd /DirectoryPartitionInfo
- D. dcdiag.exe /test:dns /DnsRecordRegistration
- E. dcdiag.exe /test:dns
- F. dnscmd /IPValidate

Answer: BD

Explanation:

<https://docs.microsoft.com/en-us/windows-server/identity/ad-ds/manage/troubleshoot/verify-dns-functionality-to>

NEW QUESTION 88

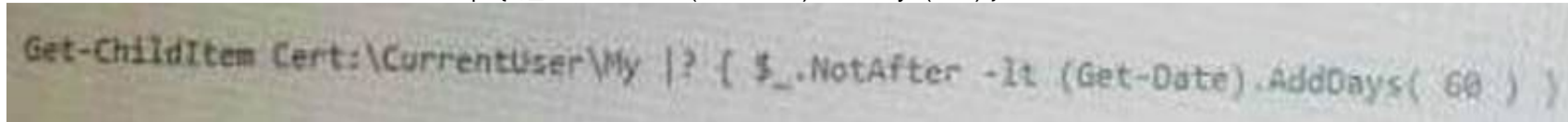
Note: This question is part of a series of questions that present the same scenario. Each question in the series contains a unique solution that might meet the stated goals. Some question sets might have more than one correct solution, while others might not have a correct solution.

After you answer a question in this section, you will NOT be able to return to it. As a result, these questions will not appear in the review screen.

You have a server named Web1 that runs Windows Server 2016.

You need to list all the SSL certificates on Web1 that will expire during the next 60 days. Solution: You run the following command.

Get-ChildItem Cert:\LocalMachine\Trust |? { \$_.NotAfter -lt (Get-Date).AddDays(60) }



Does this meet the goal?

- A. Yes
- B. No

Answer: A

NEW QUESTION 89

Your network contains an Active Directory forest named contoso.com. The forest contains several domains. An administrator named Admin01 installs Windows Server 2016 on a server named Server1 and then joins Server1 to the contoso.com domain.

Admin01 plans to configure Server1 as an enterprise root certification authority (CA).

You need to ensure that Admin01 can configure Server1 as an enterprise CA. The solution must use the principle of least privilege.

To which group should you add Admin01?

- A. Server Operators in the contoso.com domain
- B. Cert Publishers on Server1
- C. Enterprise Key Admins in the contoso.com domain
- D. Enterprise Admins in the contoso.com domain.

Answer: D

NEW QUESTION 91

Your network contains an Active Directory forest named contoso.com. The forest contains 10 domains. The root domain contains a global catalog server named DC1.

You remove the global catalog server role from DC1.

You need to decrease the size of the Active Directory database on DC1.

Solution: You stop the NTDS service on DC1. You run ntdsutil.exe, use the metadata cleanup option, and then start the NTDS

Does this meet the goal?

- A. Yes
- B. No

Answer: B

Explanation:

You need to run ntdsutil.exe with the 'compact to' option. References:

<https://theitbros.com/active-directory-database-compact-defrag/>

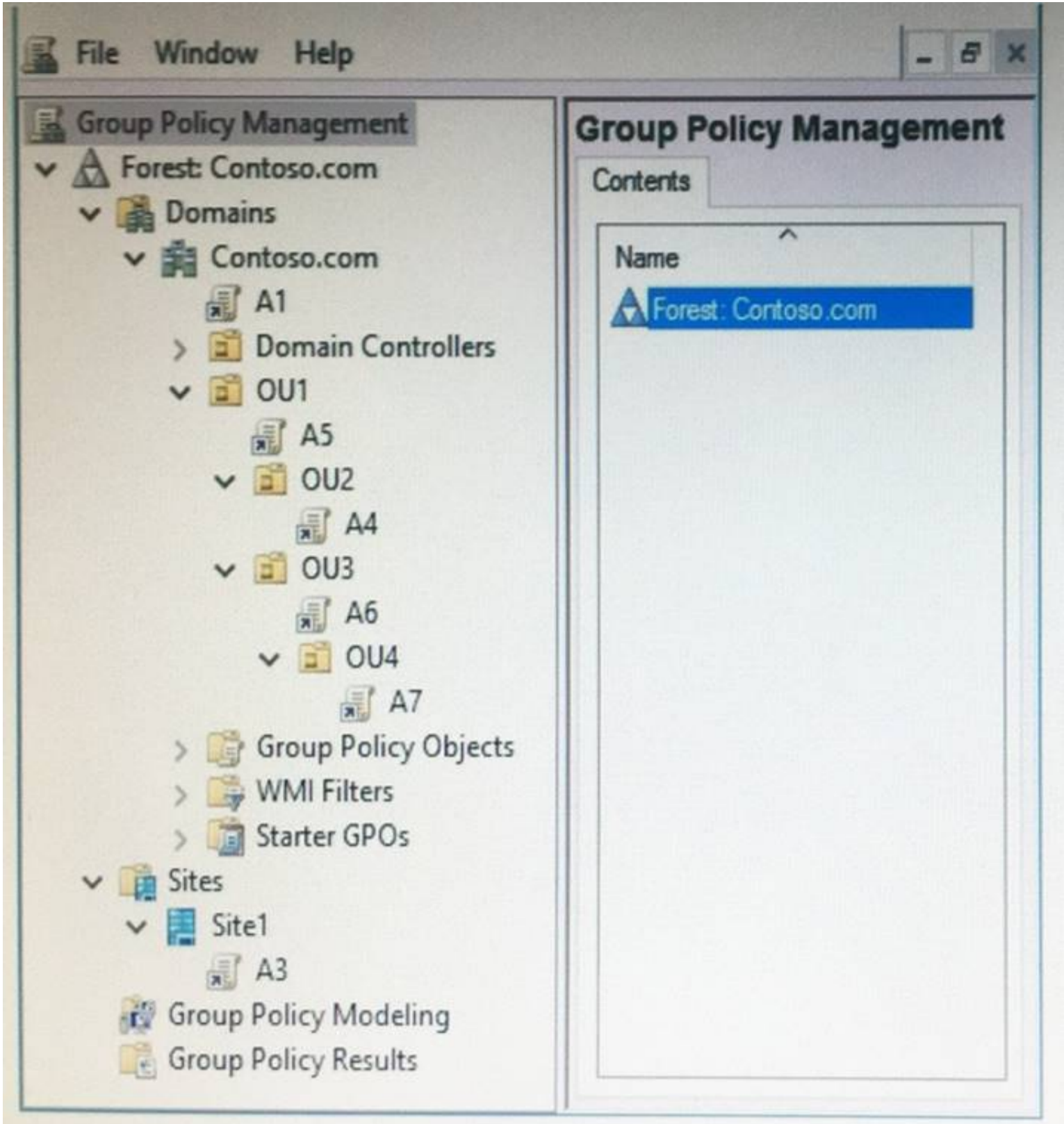
NEW QUESTION 92

Note: This question is part of a series of questions that use the same scenario. For your convenience, the scenario is repeated in each question. Each question presents a different goal and answer choices, but the text of the scenario is exactly the same in each question in this series.

Start of repeated scenario.

Your network contains an Active Directory domain named contoso.com. The domain contains a single site named Site1. All computers are in Site1.

The Group Policy objects (GPOs) for the domain are configured as shown in the exhibit. (Click the Exhibit button.)



The relevant users and client computer in the domain are configured as shown in the following table.

Object name	Object type	Object location
Computer	Computer	OU4
User1	User	OU4
User2	User	OU2

End of repeated scenario.
You plan to enforce the GPO link for A6.
Which five GPOs will apply to User1 in sequence when the user signs in to Computer1 after the link is enforced? To answer, move the appropriate GPOs from the list of GPOs to the answer area and arrange them in the correct order.

GPOs

Answer Area

A1
A2
A3
A4
A5
A6
A7

- A. Mastered
- B. Not Mastered

Answer: A

Explanation:

GPOs

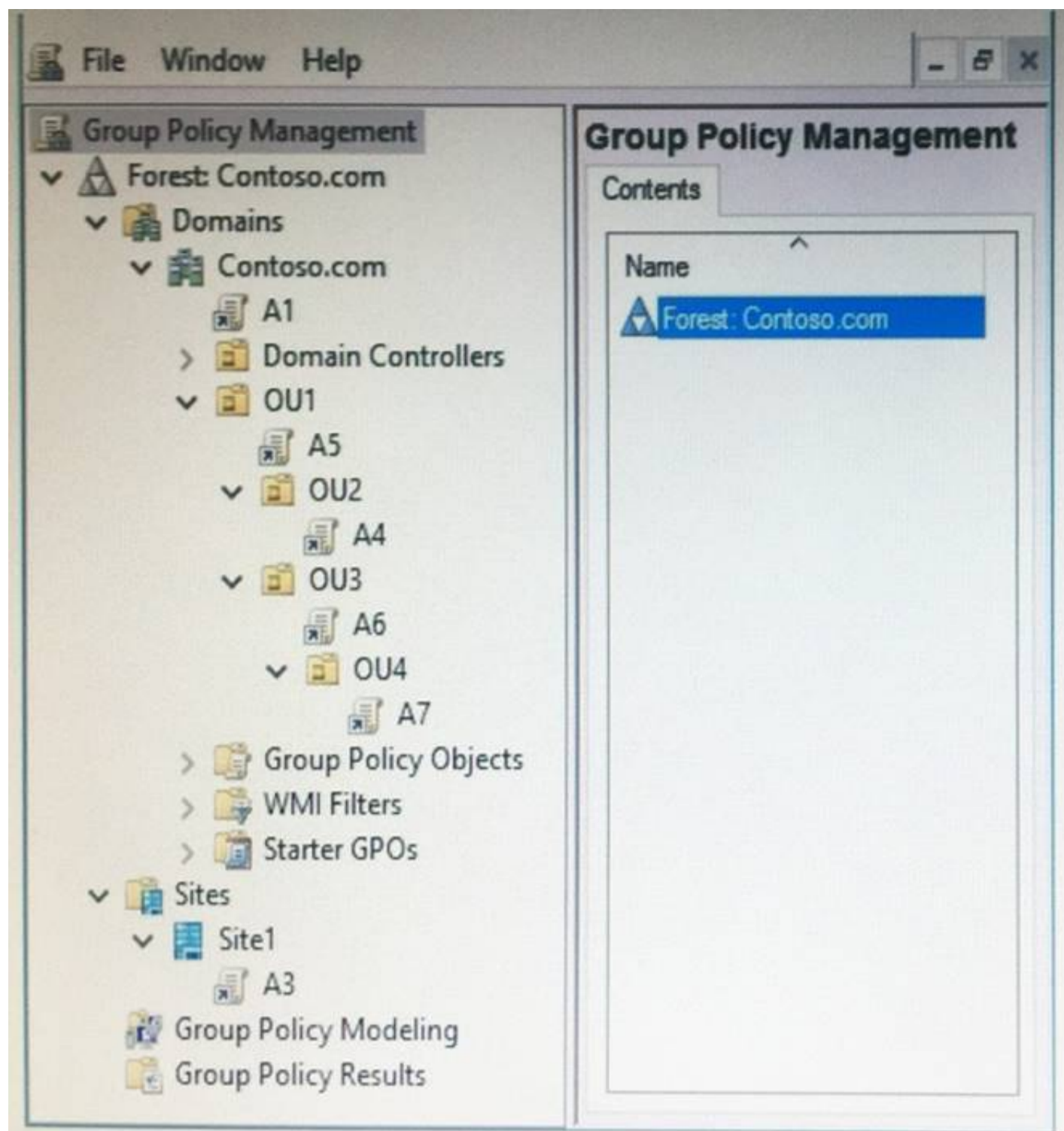
Answer Area

A1
A2
A3
A4
A5
A6
A7

A3
A1
A5
A7
A6

NEW QUESTION 96

Note: This question is part of a series of questions that use the same scenario. For your convenience, the scenario is repeated in each question. Each question presents a different goal and answer choices, but the text of the scenario is exactly the same in each question in this series.
Start of repeated scenario.
Your network contains an Active Directory domain named contoso.com. The domain contains a single site named Site1. All computers are in Site1. The Group Policy objects (GPOs) for the domain are configured as shown in the exhibit. (Click the Exhibit button.)



The relevant users and client computer in the domain are configured as shown in the following table.

Object name	Object type	Object location
Computer	Computer	OU4
User1	User	OU4
User2	User	OU2

End of repeated scenario.

You are evaluating what will occur when you disable the Group Policy link for A6.

Which GPOs will apply to User2 when the user signs in to Computer1 after the link for A6 is disabled?

- A. A1 and A5 only
- B. A3, A1, and A5 only
- C. A3, A1, A5, and A4 only
- D. A3, A1, A5, and A7

Answer: D

NEW QUESTION 97

Your network contains an Active Directory domain named contoso.com.

You have an organizational unit (OU) named OU1 that contains the computer accounts of two servers and the user account of a user named User1. A Group Policy object (GPO) named GPO1 is linked to OU1.

You have an application named App1 that installs by using an application installer named App1.exe. You need to publish App1 to OU1 by using Group Policy. What should you do?

- A. Create a Config.zap file and add a file to the File System node to the Computer Configuration node of GPO1.
- B. Create a Config.xml file and add a software installation package to the User Configuration node of GPO1.
- C. Create a Config.zap file and add a software installation package to the User Configuration node of GPO1.
- D. Create a Config.xml file and add a software installation package to the Computer Configuration node of GPO1.

Answer: C

NEW QUESTION 102

Note: This question is part of a series of questions that use the same scenario. For your convenience, the scenario is repeated in each question. Each question presents a different goal and answer choices, but the text of the scenario is exactly the same in each question in this series.

Start of repeated Scenario

You work for a company named Contoso, Ltd.

The network contains an Active Directory forest named contoso.com. A forest trust exists between contoso.com and an Active Directory forest named adatum.com.

The contoso.com forest contains the objects configured as shown in the following table.

Object name	Object type	Group scope	Group type
User1	User	<i>Not applicable</i>	<i>Not applicable</i>
User2	User	<i>Not applicable</i>	<i>Not applicable</i>
Computer1	Computer	<i>Not applicable</i>	<i>Not applicable</i>
Group1	Group	Domain local	Security
Group2	Group	Domain local	Security
Group3	Group	Universal	Security
Group4	Group	Global	Security
Group5	Group	Universal	Security

Group 1 and Group2 contain only user accounts.

Contoso hires a new remote user named User3. User3 will work from home and will use a computer named

Computer3 that runs Windows 10. Computer3 is currently in a workgroup.

An administrator named Admin1 is a member of the Domain Admins group in the contoso.com domain. From Active Directory Users and Computers, you create an organizational unit (OU) named OU1 in the

contoso.com domain, and then you create a contact named Contact1 in OU1.

An administrator of the adatum.com domain runs the Set-ADUser cmdlet to configure a user named User1 to have a user logon name of user1@litwareinc.com.

End of repeated scenario

You need to ensure that Admin1 can convert Group1 to a global group. What should you do?

- A. Add Admin1 to the Enterprise Admin group.
- B. Remove all the member from Group1.
- C. Modify the Security settings of Group1.
- D. Convert Group1 to a universal security group.

Answer: B

NEW QUESTION 107

Your network contains an Active Directory domain named contoso.com.

The user account for a user named User1 is in an organizational unit (OU) named OU1. You need to enable User1 to sign in as user1@adatum.com.

Solution: From Windows PowerShell, You run Set-ADObject 'CN=User1, OU=OU1, DC=Contoso,DC=com'

–Add @ {UserPrincipalName='User1@Adatum.com'} –Remove

@{UserPrincipalName='User1@Contoso.com'},

Does this meet the goal?

- A. Yes
- B. No

Answer: A

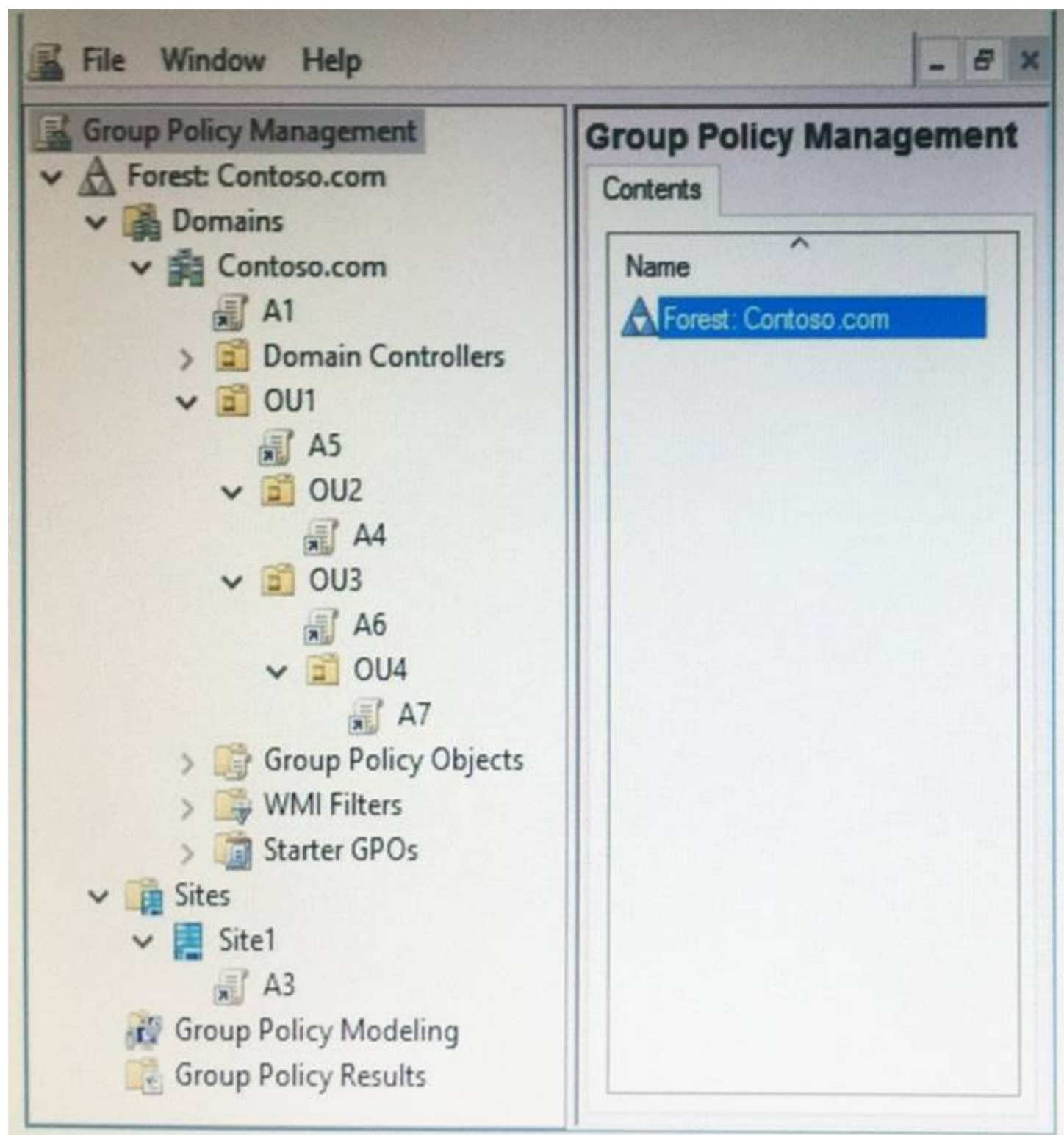
NEW QUESTION 110

Note: This question is part of a series of questions that use the same scenario. For your convenience, the scenario is repeated in each question. Each question presents a different goal and answer choices, but the text of the scenario is exactly the same in each question in this series.

Start of repeated scenario.

Your network contains an Active Directory domain named contoso.com. The domain contains a single site named Site1. All computers are in Site1.

The Group Policy objects (GPOs) for the domain are configured as shown in the exhibit. (Click the Exhibit button.)



The relevant users and client computer in the domain are configured as shown in the following table.

Object name	Object type	Object location
Computer	Computer	OU4
User1	User	OU4
User2	User	OU2

End of repeated scenario.

You are evaluating what will occur when you block inheritance on OU4.

Which GPO or GPOs will apply to User1 when the user signs in to Computer1 after block inheritance is configured?

- A. A1, A5, and A6
- B. A3, A1, A5, and A7
- C. A3 and A7 only
- D. A7 only

Answer: D

NEW QUESTION 115

Your network contains an Active Directory forest named contoso.com. The forest contains a member server named Server1 that runs Windows Server 2016.

Server1 is located in the perimeter network.

You install the Active Directory Federation Services server role on Server1. You create an Active Directory Federation Services (AD FS) farm by using a certificate that has a subject name of sts.contoso.com.

You need to enable certificate authentication from the Internet on Server1.

Which two inbound TCP ports should you open on the firewall? Each correct answer presents part of the solution.

- A. 389
- B. 443
- C. 3389
- D. 8531
- E. 49443

Answer: BE

NEW QUESTION 117

Your network contains an Active Directory domain named contoso.com.

The user account for a user named User1 is in an organizational unit (OU) named OU1. You need to enable User1 to sign in as user1@adatum.com.

Solution: From Windows PowerShell, You run Set-ADuser User1 –UserPrincipalName User1@Adatum.com. Does this meet the goal?

- A. Yes
- B. No

Answer: A

NEW QUESTION 122

Note: This question is part of a series of questions that present the same scenario. Each question in the series contains a unique solution that might meet the stated goals. Some question sets might have more than one correct solution, while others might not have a correct solution.

After you answer a question in this section, you will NOT be able to return to it. As a result, these questions will not appear in the review screen.

You have a server named Web1 that runs Windows Server 2016.

You need to list all the SSL certificates on Web1 that will expire during the next 60 days. Solution: You run the following command.

Get-ChildItem Cert:\LocalMachine\My |? { \$_.NotAfter -lt (Get-Date).AddDays(60) } Does this meet the goal?

- A. Yes
- B. No

Answer: B

NEW QUESTION 124

Note: This question is part of a series of questions that present the same scenario. Each question in the series contains a unique solution that might meet the stated goals. Some question sets might have more than one correct solution, while others might not have a correct solution.

After you answer a question in this section, you will NOT be able to return to it. As a result, these questions will not appear in the review screen.

Your network contains an Active Directory domain named contoso.com. The domain contains two domain controllers named DC1 and DC2.

DC1 holds the RID master operations role. DC1 fails and cannot be repaired. You need to move the RID role to DC2.

Solution: On DC2, you open the command prompt, run dsrmgmt.exe, connect to DC2, and use the Seize RID master opinion.

Does this meet the goal?

- A. Yes
- B. No

Answer: B

NEW QUESTION 128

Your network contains an Active Directory domain named contoso.com. The domain contains an Active Directory Federation Services (AD FS) server named Server1.

On a standalone server named Server2, you install and configure the Web Application Proxy.

You have an internal web application named WebApp1. AD FS has a relying party trust for WebApp1. You need to provide external users with access to

WebApp1. Authentication to WebApp1 must use AD FS

pre-authentication.

Which tool should you use to publish WebApp1?

- A. Remote Access Management on Server1
- B. AD FS Management on Server2
- C. Remote Access Management on Server2
- D. Routing and Remote Access on Server1
- E. AD FS Management on Server1.

Answer: C

Explanation:

References:

<https://docs.microsoft.com/en-us/windows-server/remote/remote-access/web-application-proxy/publishing-appli>

NEW QUESTION 133

Your network contains an Active Directory forest. The forest contains two domains named litwareinc.com and contoso.com. The contoso.com domain contains two domain controllers named LON-DC01 and LON-DC02. The domain controllers are located in a site named London that is associated to a subnet of 192.168.10.0/24.

You discover that LON-DC02 is not a global catalog server. You need to configure LON-DC02 as a global catalog server.

What should you do?

- A. From Active Directory Sites and Services, modify the NTDS Settings object of the London site.
- B. From Windows Power Shell, run the Enable-ADOptionalFeature cmdlet.
- C. From the properties of the LON-DC02 computer account in Active Directory Users and Computers modify the NTDS settings.
- D. From the properties of the LON-DC02 computer account in Active Directory Users and Computers, modify the City attribute.

Answer: C

NEW QUESTION 134

A technician named Tech1 is assigned the task of joining the laptops to the domain. The computer accounts of each laptop must be in an organizational unit (OU) that is associated to the department of the user who will use that laptop. The laptop names must start with four characters indicating the department followed by a four-digit number

Tech1 is a member of the Domain Users group only. Tech1 has the administrator logon credentials for all the laptops.

You need Tech1 to join the laptops to the domain. The solution must ensure that the laptops are named correctly, and that the computer accounts of the laptops

are in the correct OUs.

Solution: You instruct Tech1 to sign in to each laptop, to rename each laptop by using System in Control Panel, and then to join each laptop to the domain by using the Netdom join command.

Does this meet the goal?

- A. Yes
- B. No

Answer: A

NEW QUESTION 136

Note: This question is part of a series of questions that use the same or similar answer choices. An answer choice may be correct for more than one question in the series. Each question is independent of the other questions in this series. Information and details provided in a question apply only to that question.

Your network contains an Active Directory domain named contoso.com. You recently deleted 5,000 objects from the Active Directory database.

You need to reduce the amount of disk space used to store the Active Directory database on a domain controller.

- A. Dsadd quota
- B. Dsmod
- C. Active Directory Administrative Center
- D. DsacIs
- E. Domain
- F. Active Directory Users and Computers
- G. Ntdsutil
- H. Group Policy Management Console

Answer: G

NEW QUESTION 139

You have users that access web applications by using HTTPS. The web applications are located on the servers in your perimeter network. The servers use certificates obtained from an enterprise root certification authority (CA). The certificates are generated by using a custom template named WebApps. The certificate revocation list (CRL) is published to Active Directory.

When users attempt to access the web applications from the Internet, the users report that they receive a revocation warning message in their web browser. The users do not receive the message when they access the web applications from the intranet.

You need to ensure that the warning message is not generated when the users attempt to access the web applications from the Internet.

What should you do?

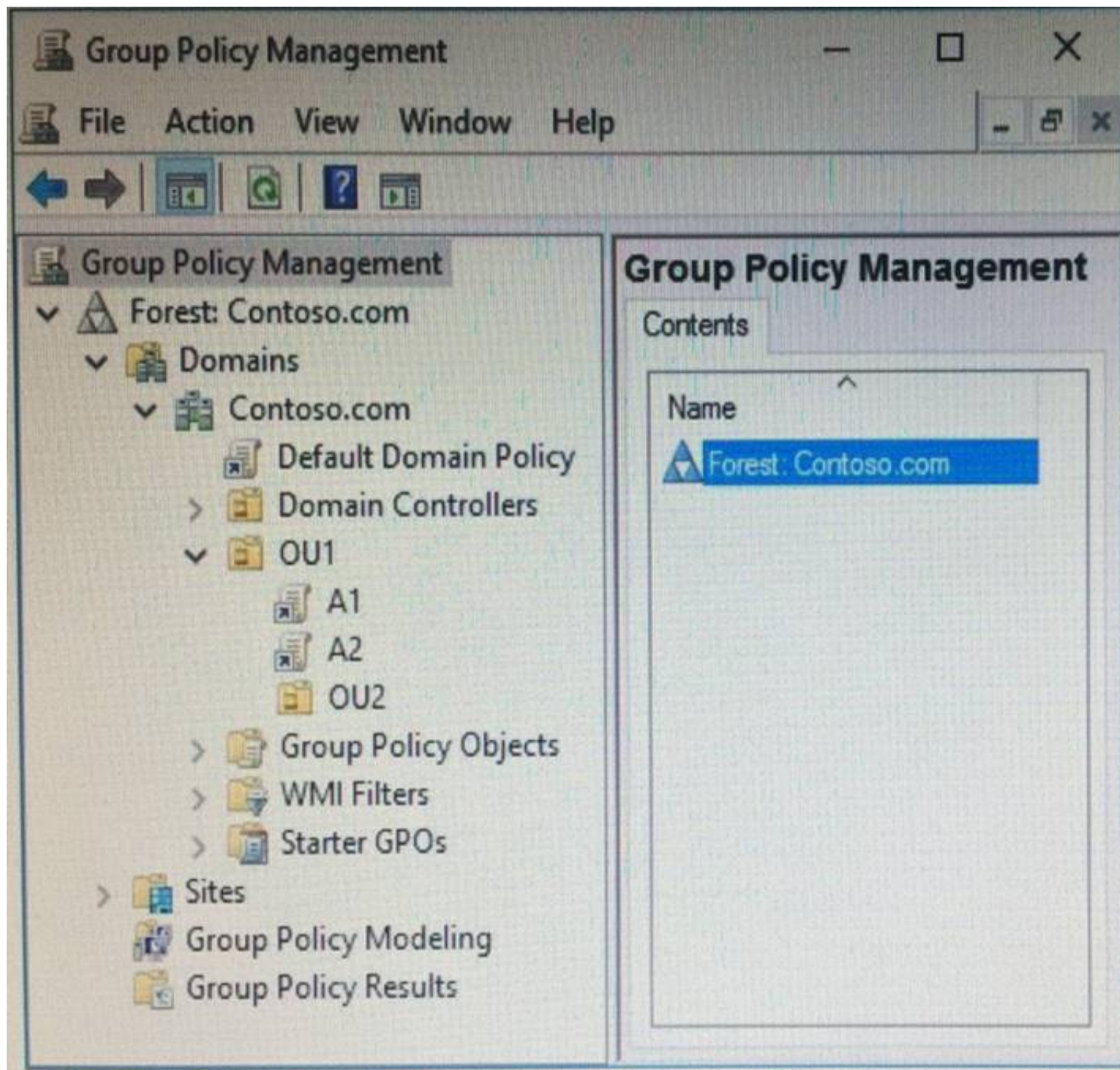
- A. Install the Certificate Enrollment Web Service role service on a server in the perimeter network.
- B. Modify the WebApps certificate template, and then issue the certificates used by the web application servers.
- C. Install the Web Application Proxy role service on a server in the perimeter network
- D. Create a publishing point for the CA.
- E. Modify the CRL distribution point, and then reissue the certificates used by the web application servers.

Answer: C

NEW QUESTION 143

Your network contains an Active Directory domain named contoso.com.

You open Group Policy Management as shown in the exhibit. (Click the Exhibit button.)



You discover that some of the settings configured in the A1 Group Policy object (GPO) fail to apply to the users in the OU1 organizational unit (OU). You need to ensure that all of the settings in A1 apply to the users in OU1. What should you do?

- A. Enable loopback policy processing in A1.
- B. Block inheritance on OU1.
- C. Modify the policy processing order for OU1.
- D. Modify the GPO Status of A1.

Answer: C

NEW QUESTION 145

Your network contains an Active Directory forest named contoso.com
 Your company plans to hire 500 temporary employees for a project that will last 90 days.
 You create a new user account for each employee. An organizational unit (OU) named Temp contains the user accounts for the employees.
 You need to prevent the new users from accessing any of the resources in the domain after 90 days. What should you do?

- A. Run the Get-ADUser cmdlet and pipe the output to the Set-ADUser cmdlet.
- B. Create a group that contains all of the users in the Temp O
- C. Create a Password Setting object (PSO) for the new group.
- D. Create a Group Policy object (GPO) and link the GPO to the Temp O
- E. Modify the Password Policy settings of the GPO.
- F. Run the GET-ADOrganizationalUnit cmdlet and pipe the output to the Set-Date cmdlet.

Answer: A

NEW QUESTION 148

You network contains an Active Directory domain named contoso.com. The domain contains an Active Directory Federation Services (AD FS) server named ADFS1, a Web Application Proxy server named WAP1, and a web server named Web1.
 You need to publish a website on Web1 by using the Web Application Proxy. Users will authenticate by using OAuth2 preauthentication.
 What should you do first?

- A. On Web1, add site bindings.
- B. On Web1, add handler mappings.
- C. On ADFS1, enable an endpoint.
- D. On ADFS1, add a claims provider trust.

Answer: D

NEW QUESTION 152

Your company has a marketing department and a security department. The network contains an Active Directory domain named contoso.com. The domain contains an enterprise certification authority (CA). You have two organizational units (OUs) named MKT_UsersOU and MKT_ComputersOU. MKT_UsersOU contains the user accounts for the users in the marketing department. MKT_ComputersOU contains the computer accounts for the computers in the marketing department. A Group policy object (GPO) named GPO1 is linked to MKT_UsersOU. A GPO named GPO2 linked to MKT_ComputersOU. You plan to deploy a web application for the marketing department users. The application will require certificates for authentication. The security department configures the CA to support the planned deployment. You need to ensure that the web application can authenticate the marketing department users. What should you do?

- A. From the User Configuration node of GPO1, create an Internet Setting preference.
- B. From the User Configuration node of GPO1, configure the Certificate Services Client - Auto enrollment settings.
- C. From the Computer Configuration node of GPO2, configure the Certificate Services Client - Certificate Enrollment Policy settings.
- D. From the Computer Configuration node of GPO2, create the Automatic Certificate Request Settings.

Answer: A

NEW QUESTION 157

Your company implements Active Directory Federation Services (AD FS). You confirm that the company meets all the prerequisites for using Microsoft Azure Multi-Factor Authentication (MFA) and AD FS. You need to ensure that you can select MFA as the primary authentication method for AD FS. Which three actions should you perform in sequence? To answer move the appropriate actions from the list of actions to the answer area and arrange them in the correct order.

Actions

Add a claims provider trust.

Run the New-AdfsAzureMfatenant Certificate cmdlet.

Run the New-MSolServicePrincipal Credential cmdlet.

Edit the authentication methods.

Run the Set-AdfsAzureMfaTenant cmdlet.

Answer Area

1.

2.

3.

- A. Mastered
- B. Not Mastered

Answer: A

Explanation:

Actions

Add a claims provider trust.

Run the New-AdfsAzureMfatenant Certificate cmdlet.

Run the New-MSolServicePrincipal Credential cmdlet.

Edit the authentication methods.

Run the Set-AdfsAzureMfaTenant cmdlet.

Answer Area

1. Run the New-AdfsAzureMfatenant Certificate cmdlet.

2. Run the New-MSolServicePrincipal Credential cmdlet.

3. Run the Set-AdfsAzureMfaTenant cmdlet.

NEW QUESTION 161

Your network contains an Active Directory forest named contoso.com.

Your company has a custom application named ERP1. ERP1 uses an Active Directory Lightweight Directory Services (AD LDS) server named Server1 to authenticate users.

You have a member server named Server2 that runs Windows Server 2016. You install the Active Directory Federation Services (AD FS) server role on Server2 and create an AD FS farm.

You need to configure AD FS to authenticate users from the AD LDS server.

Which cmdlets should you run? To answer, select the appropriate options in the answer area.

Answer Area

First cmdlet to run:

	▼
Add-AdfsRelyingPartyTrust	
New-AdfsLdapServerConnection	
Set-AdfsEndpoint	

Second cmdlet to run:

	▼
Add-AdfsLocalClaimsProviderTrust	
Enable-AdfsRelyingPartyTrust	
Set-AdfsEndpoint	

- A. Mastered
- B. Not Mastered

Answer: A

Explanation:

To configure your AD FSfarm to authenticate users from an LDAP directory, you can complete the following steps:

Step 1: New-AdfsLdapServerConnection

First, configure a connection to your LDAP directory using the New-AdfsLdapServerConnection cmdlet:

\$DirectoryCred = Get-Credential

\$vendorDirectory = New-AdfsLdapServerConnection -HostName dirserver -Port 50000-SslMode None

-AuthenticationMethod Basic -Credential \$DirectoryCred

Step 2 (optional):

Next, you can perform the optional step of mapping LDAP attributes to the existing AD FS claims using the New-AdfsLdapAttributeToClaimMapping cmdlet.

Step 3: Add-AdfsLocalClaimsProviderTrust

Finally, you must register the LDAP store with AD FS as a local claims provider trust using the Add-AdfsLocalClaimsProviderTrust cmdlet:

Add-AdfsLocalClaimsProviderTrust -Name "Vendors" -Identifier "urn:vendors" -Type L References: [https://technet.microsoft.com/en-us/library/dn823754\(v=ws.11\).aspx](https://technet.microsoft.com/en-us/library/dn823754(v=ws.11).aspx)

NEW QUESTION 163

Note: This question is part of a series of questions that present the same scenario. Each question in the series contains a unique solution that might meet the stated goals. Some question sets might have more than one correct solution, while others might not have a correct solution.

After you answer a question in this section, you will NOT be able to return to it. As a result, these questions will not appear in the review screen.

You have a server named Web1 that runs Windows Server 2016.

You need to list all the SSL certificates on Web1 that will expire during the next 60 days. Solution: You run the following command.

```
Get-Childitem Cert:\LocalMachine\My |? { $_.NotAfter -lt (Get-Date).AddDays( 60 ) }
```

Does this meet the goal?

- A. Yes
- B. No

Answer: B

NEW QUESTION 166

Your network contains an Active Directory forest. The forest contains two domains named litwarenc.com and contoso.com. The contoso.com domain contains two domain controllers named LON-DC01 and LON-DC02.

The domain controllers are located in a site named London that is associated to a subnet of 192.168.10.0/24

You discover that LON-DC02 is not a global catalog server. You need to configure LON-DC02 as a global catalog server.

What should you do?

- A. From the properties of the LON-DC02 computer account in Active Directory Users and Computers, modify the NTDS settings.
- B. From the properties of the LON-DC02 computer account in Active Directory Users and Computers, modify the City attribute.
- C. From Active Directory Sites and Services, modify the properties of the 192.168.10.0/24 IP subnet.
- D. From the properties of the Domain Controllers organizational unit (OU) in Active Directory Users and Computers, modify the Security settings.

Answer: A

NEW QUESTION 170

Your company has a marketing department.

The network contains an Active Directory domain named comoso.com.

The domain contains two top-level organizational units (OUs) named MKT_Comps and MKT_Users. MKT_Comps contains the computer accounts for the computers in the marketing department. MKT_Users contains the user accounts for the users in the marketing department.

You link a new Group Policy object (GPO) named GPO1 to MKT_Comps.

You need to deploy a VPN connection to all of the users who sign in to the marketing department computers. The users must be

- A. Computer Configuration/Policies/Administrative Templates/Network/Network Connections
- B. Computer Configuration/Preferences/Control Panel Settings/Network Options
- C. User Configuration/Preferences/Control Panel Settings/Network Options
- D. User configuration/Policies/Administrative Templates/Network/Network Connections

Answer: B

NEW QUESTION 173

Your company has a marketing department.

The network contains an Active Directory domain named contoso.com.

The main office contains three domain controllers. Each branch office contains one domain controller.

You discover that new settings in the Default Domain Policy are not applied on one of the branch offices, but all other Group Policy objects (GPOs) are applied.

You need to check the replication of the Default Domain Policy for the branch Office. What should you do from a domain controller in the main office?

- A. From Windows Power Shell, run the Get-GPO Report cmdlet.
- B. From a command prompt, run repadmin.exe.
- C. From a command prompt, run dcdiag.exe.
- D. From Group Policy Management, click Default Domain Policy under Contoso.com

Answer: A

NEW QUESTION 178

Note: This question is part of a series of questions that use the same or similar answer choice. An answer choice may be correct for more than one question in the series. Each question is Independent of the other questions in this series. Information and details provided in a question apply only to that question.

Your network contains an Active Directory domain named contoso.com. The domain functional level is Windows Server 2012 R2.

Your company hires 3 new security administrators to manage sensitive user data. You create a user account named Secuty1 for the security administrator.

You need to ensure that the password for Secuty1 has at least 12 characters and is modified every 10 days. The solution must apply to Security 1 only.

Which tool should you use?

- A. Dsadd quota
- B. Dsmod
- C. Active Directory Administrative Center
- D. Dsacis
- E. Dsamain

Answer: C

Explanation:

Using Fine-Grained Password Policies you specify multiple password policies in a single domain and apply different restrictions for password and account lockout policies to different sets of users in a domain. You can apply stricter settings to privileged accounts and less strict settings to the accounts of other users. To enable Fine-Grained Password Policies (FGPP), you need to open the Active Directory Administrative Center (ADAC) <https://blogs.technet.microsoft.com/canitpro/2013/05/29/step-by-step-enabling-and-using-fine-grained->

NEW QUESTION 180

Note: This question is part of a series of questions that present the same scenario. Each question in the series contains a unique solution that might meet the stated goals. Some question sets might have more than one correct solution, while others might not have a correct solution.

After you answer a question in this section, you will NOT be able to return to it. As a result, these questions will not appear in the review screen.

Your network contains an Active Directory domain named contoso.com. The domain contains two domain controllers named DC1 and DC2.

DC1 holds the RID master operations role. DC1 fails and cannot be repaired. You need to move the RID role to DC2.

Solution: On DC2, you open Windows PowerShell and run

Move-AddirectoryServerOperationMasterRole -OperationMasterRidMaster -Identity DC2.Adatum.com Does this meet the goal?

- A. Yes
- B. No

Answer: B

Explanation:

You would need to use the -Force parameter because the server that held the role (DC1) is offline.

NEW QUESTION 182

Your network contains an Active Directory domain named contoso.com.

You plan to deploy a new Active Directory Rights Management Services (AD RMS) cluster on a server named Server1.

You need to create the AD RMS service account. The solution must use the principle of least privilege. What should you do?

- A. Create a domain user account and add the account to the Administrators group on Server1.
- B. Create a local user account on Server1 and add the account to the Administrators group on Server1.
- C. Create a domain user account and add the account to the Domain Users group in the domain

D. Create a domain user account and add the account to the Account Operators group in the domain.

Answer: A

NEW QUESTION 187

You deploy a new enterprise certification authority (CA) named CA1. You plan to issue certificates based on the User certificate template. You need to ensure that the issued certificates are valid for two years and support autoenrollment. What should you do first?

- A. Run the certutil.exe command and specify the resubmit parameter.
- B. Duplicate the User certificate template.
- C. Add a new certificate template for CA1 to issue.
- D. Modify the Request Handling settings for the CA.

Answer: B

NEW QUESTION 192

Your network contains an Active Directory domain named contoso.com. The domain contains two servers named Server1 and Server2 that run Windows Server 2016.

Server1 has IP Address Management (IPAM) installed. Server2 has the DHCP Server role installed. The IPAM server retrieves data from Server2.

The domain has two users named User1 and User2 and a group named Group1. User1 is the only member of Group1.

Server1 has one IPAM access policy. You edit the access policy as shown in the Policy exhibit. (Click the Exhibit button.)

Edit Access Policy

Show All

User Settings

Click Add to add a user

* User alias:

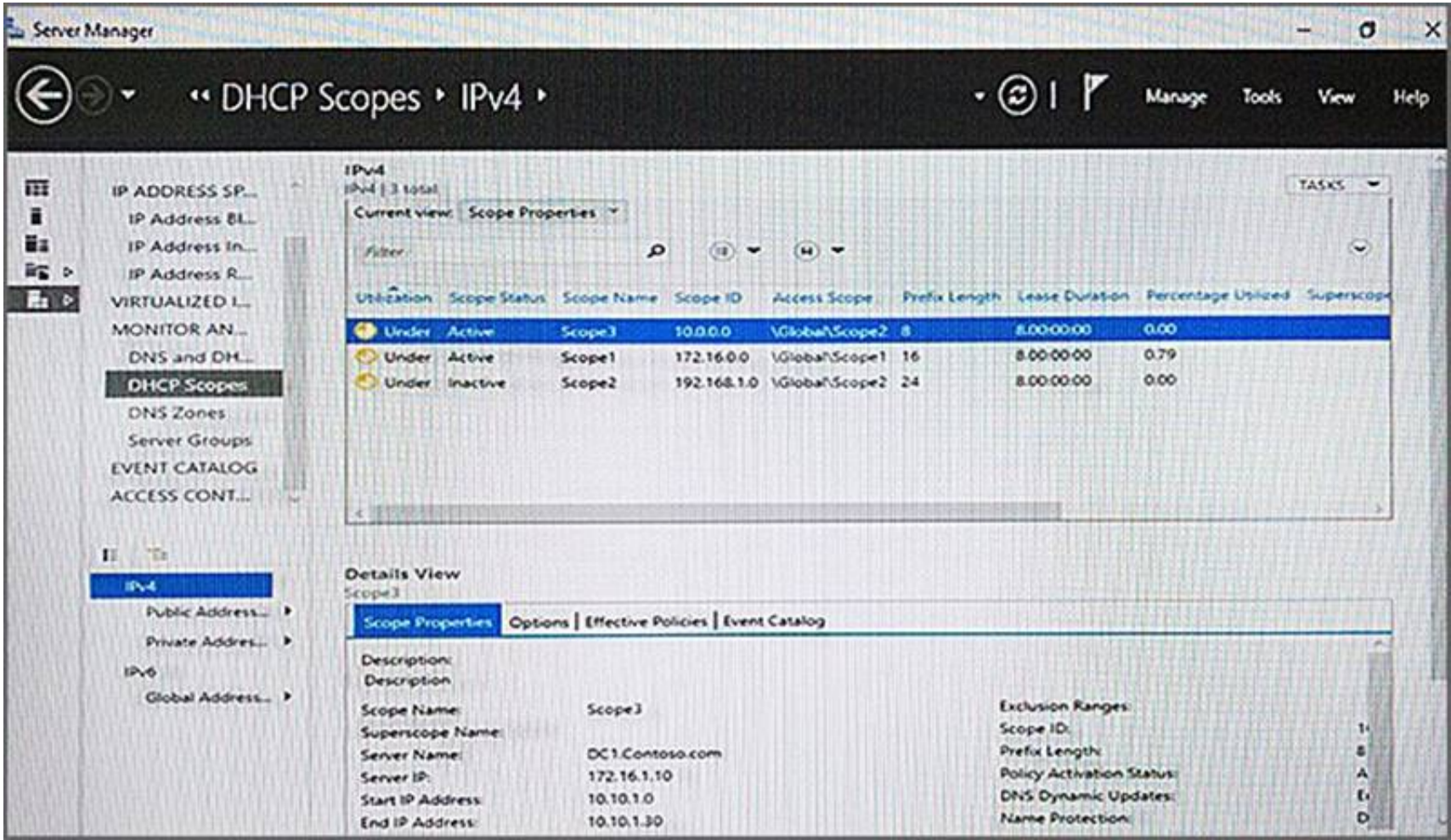
Description:

Access Settings

Specify the access settings for the access policy:

Role	Access Scope
IPAM DHCP Scope Administra...	\GlobalScope2

The DHCP scopes are configured as shown in the Scopes exhibit. (Click the Exhibit button.)



For each of the following statements, select Yes if the statement is true. Otherwise, select No.

Answer Area

Statements	Yes	No
User1 can modify the description of Scope1.	<input type="radio"/>	<input type="radio"/>
User2 can modify the description of Scope1.	<input type="radio"/>	<input type="radio"/>
User1 can modify the description of Scope2.	<input type="radio"/>	<input type="radio"/>

- A. Mastered
- B. Not Mastered

Answer: A

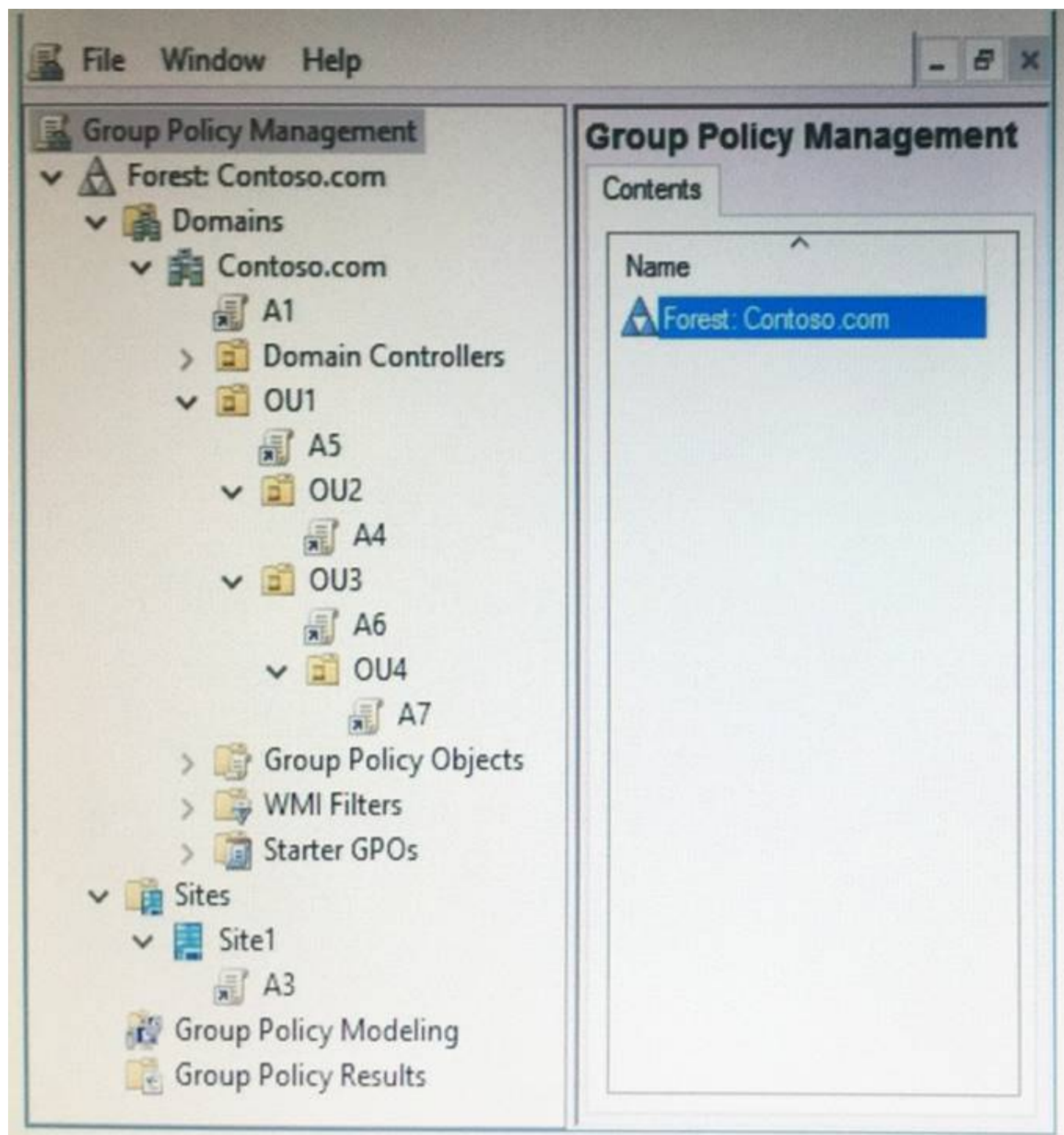
Explanation:

Answer Area

Statements	Yes	No
User1 can modify the description of Scope1.	<input checked="" type="radio"/>	<input type="radio"/>
User2 can modify the description of Scope1.	<input type="radio"/>	<input checked="" type="radio"/>
User1 can modify the description of Scope2.	<input type="radio"/>	<input checked="" type="radio"/>

NEW QUESTION 195

Note: This question is part of a series of questions that use the same scenario. For your convenience, the scenario is repeated in each question. Each question presents a different goal and answer choices, but the text of the scenario is exactly the same in each question in this series.
Start of repeated scenario.
Your network contains an Active Directory domain named contoso.com. The domain contains a single site named Site1. All computers are in Site1.
The Group Policy objects (GPOs) for the domain are configured as shown in the exhibit. (Click the Exhibit button.)



The relevant users and client computer in the domain are configured as shown in the following table.

Object name	Object type	Object location
Computer	Computer	OU4
User1	User	OU4
User2	User	OU2

End of repeated scenario.

You are evaluating what will occur when you remove the Authenticated Users group from the Security Filtering settings of A5. Which GPO or GPOs will apply to User1 when the user signs in to Computer1 after Security Filtering is configured?

- A. A1 and A7 only
- B. A3 and A1 only.
- C. A3, A1, A6 and A7
- D. A7 only

Answer: A

NEW QUESTION 198

Your network contains an Active Directory domain named contoso.com. The domain contains a user named User1, a group named Group1, and an organizational unit (OU) named OU1.

You need to enable User1 to link Group Policies to OU1.

Solution: From Active Directory Administrative Center, you add User1 to Group1 and grant Group1 Full Control permission to OU1.

Does this meet the goal?

- A. Yes
- B. No

Answer: A

NEW QUESTION 200

Your network contains an Active Directory domain named contoso.com. The domain contains a user named User1, a group named Group1, and an organizational unit (OU) named OU1.

You need to enable user1 to link Group Policies to OU1.

Solution: From Active Directory Users and Computers, you add User1 to the Group Policy Creator owners group.
 Does this meet the goal?

- A. Yes
- B. NO

Answer: B
Explanation:References:

Explanation:

<http://www.itprotoday.com/management-mobility/what-group-policy-creator-owners-group>

NEW QUESTION 205

You have a Nano Server named Nano1 that runs Windows Server 2016. Nano1 is deployed to a virtual machine and is a member of a workgroup.
 You need to join Nano1 to a domain named contoso.com.

Which two commands should you run? To answer, select the appropriate options in the answer area. NOTE: Each correct selection is worth one point.

- A. Mastered
- B. Not Mastered

Answer: A

Explanation:

NEW QUESTION 210

You have a server named Server1 in a workgroup.

You need to configure a Group Policy setting on Server1 that will apply to only non-administrative users. What should you do?

- A. Run mnc.exe
- B. Add the Group Policy Object Editor snap-in and change the Group Policy object (GPO)
- C. Open Local Group Policy Editor
- D. From the File menu, modify the Options settings.
- E. Open Local Users and Group
- F. Create a new group Run New.GPO.
- G. Open Local Group Policy Editor
- H. From the View menu, modify the Customize settings.

Answer: A

NEW QUESTION 211

Your network contains an Active Directory domain named contoso.com. You deploy a standalone root certification authority (CA) named CA1. You need to auto enroll domain computers for certificates by using a custom certificate template. What should you do first?

- A. Modify the Policy Module for CA1.
- B. Modify the Exit Module for CA1.
- C. Install a standalone subordinate CA.
- D. Install an enterprise subordinate CA.

Answer: D

Explanation:

You can't create templates or configure auto-enrollment on a standalone CA.

NEW QUESTION 215

You create a user account that will be used as a template for new user accounts. Which setting will be copied when you copy the user account from Active Directory Users and Computers?

- A. Published Certificates
- B. the Member of attribute
- C. the Office attribute
- D. the Description attribute

Answer: B

NEW QUESTION 217

Your network contains an Active Directory domain named contoso.com. The domain contains two servers named Server1 and Server2 that run Windows Server 2016.

Server1 has IP Address Management (IPAM) installed. Server2 has Microsoft System Center 2016 Virtual Machine Manager (VMM) installed.

You need to integrate IPAM and VMM.

Which types of objects should you create on each server? To answer, drag the appropriate object types to the correct servers. Each object type may be used once, more than once, or not at all. You may need to drag the split bar between panes or scroll to view content.

Objects

Access Policy

Run As Account

User Role

Network Service

Service Template

Answer Area

Server1:

Object

Server2:

Object

Object

- A. Mastered
- B. Not Mastered

Answer: A

Explanation:

Server 1 (IPAM): Access Policy

VMM must be granted permission to view and modify IP address space in IPAM, and to perform remote management of the IPAM server. VMM uses a "Run As" account to provide these permissions to the IPAM network service plugin. The "Run As" account must be configured with appropriate permission on the IPAM server.

To assign permissions to the VMM user account

In the IPAM server console, in the upper navigation pane, click ACCESS CONTROL, right-click Access Policies in the lower navigation pane, and then click Add AccessPolicy.

Etc.

Server 2 (VMM) #1: Network Service Server 2 (VMM) #2: Run As Account

Perform the following procedure using the System Center VMM console. To configure VMM (see step 1-3, step 6-7)

Create Run As Account

Provide the details for this Run As account

Name: VMM User

Description: This domain account is used exclusively by this instance of VMM to integrate with the IPAM server IPAM1.contoso.com.

User name: contoso\vmuser

Example: contoso\domainuser or localuser

Password:

Confirm password:

☒ Validate domain credentials

View Script

OK

Cancel

Etc.

References: [https://technet.microsoft.com/en-us/library/dn783349\(v=ws.11\).aspx](https://technet.microsoft.com/en-us/library/dn783349(v=ws.11).aspx)

NEW QUESTION 220

Your company has an office in Montreal.

The network contains an Active Directory domain named contoso.com.

You have an organizational unit (OU) named Montreal that contains all of the users accounts for the users in the Montreal office. An office manager in the Montreal office knows each user personally.

You need to ensure that the office manager can provide the users with a new password if the users forget their password. What should you do?

- A. From the Security settings of the Montreal OU, assign the office manager the Reset Password permission.
- B. From the Security settings of each user account in the Montreal OU, assign the office manager the Change Password permission.
- C. Create a Group Policy object (GPO) and link the GPO to the OU of the domain.
- D. Filter the GPO to the Montreal user.
- E. Assign the office manager the Apply Group Policy permission on the GPO.
- F. Configure the Password Policy settings of the GPO.
- G. Create a Group Policy object (GPO) and link the GPO to the Montreal OU.
- H. Assign the office manager the Apply Group Policy permission on the GPO.
- I. Configure the Password Policy settings of the GPO.

Answer: B

NEW QUESTION 225

You have a standalone root certification authority (CA).

You have a new security policy requirement specifying that any changes to the CA configuration must be logged.

You need to ensure that the CA meets the new security requirement.

Which two actions should you perform? Each correct answer presents part of the solution.

- A. From Local Group Policy Editor, configure auditing for policy change.
- B. From Local Group Policy Editor, configure auditing for object access.
- C. From the Certification Authority console, modify the Security settings for the CA.
- D. From the Certification Authority console, modify the Auditing settings for the CA.
- E. From the Certification Authority console, modify the Certificate Managers settings for the CA.

Answer: AE

NEW QUESTION 226

Note: This question is part of a series of questions that use the same or similar answer choices. An answer choice may be correct for more than one question in the series. Each question is independent of the other questions in this series. Information and details provided in a question apply only to that question.

Your network contains an Active Directory domain named contoso.com. The domain contains a domain controller named DC1 that runs Windows Server 2016. You need to create a snapshot of the Active Directory database on DC1. Which tool should you use?

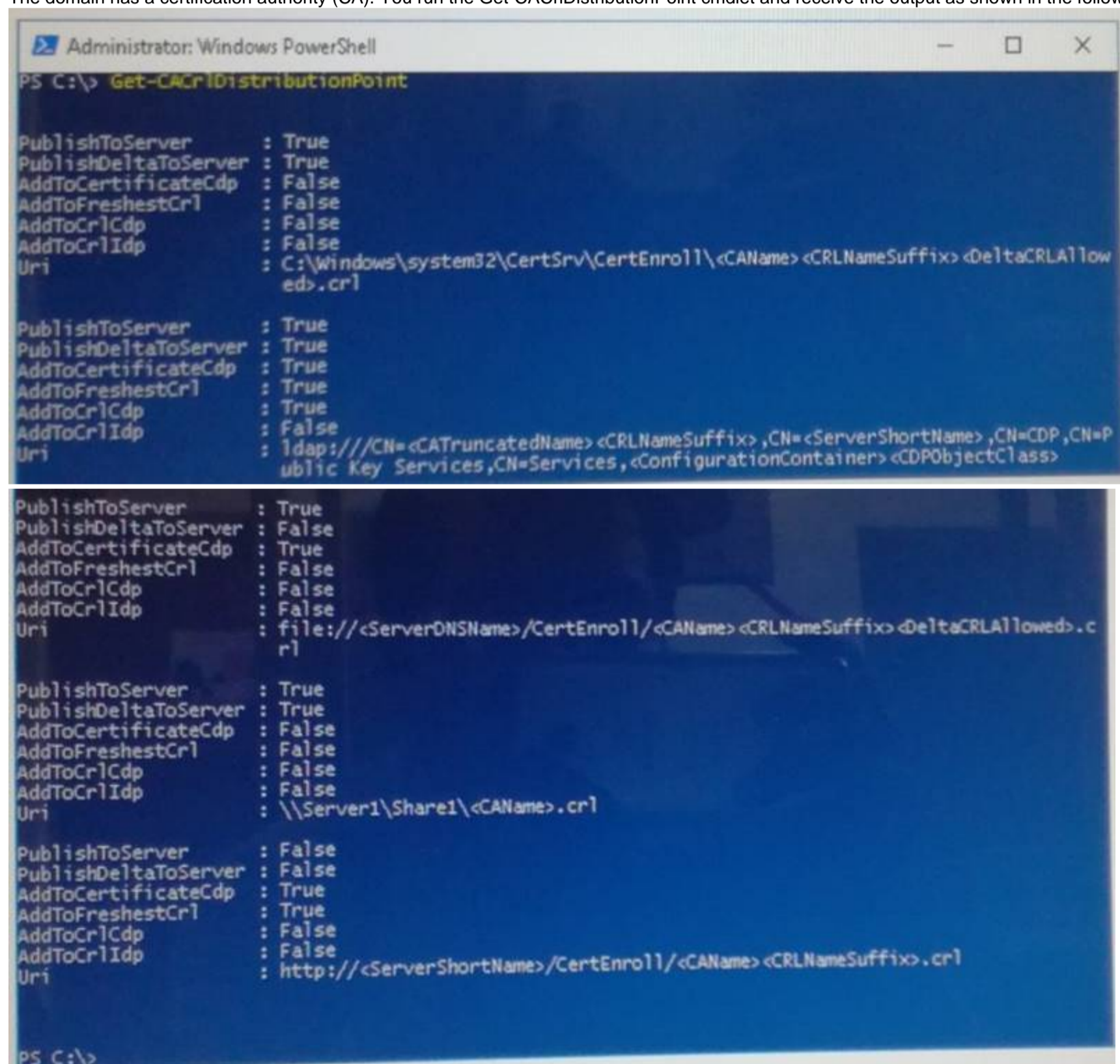
- A. Dsadd quota
- B. Dsmmod
- C. Active Directory Administrative Center
- D. Dsacsls
- E. Dsmain
- F. Active Directory Users and Computers
- G. Ntdsutil
- H. Group Policy Management Console

Answer: E

NEW QUESTION 230

Your network is isolated from the Internet. The network contains computers that are members of a domain and computers that are members of a workgroup. All the computers are configured to use internal DNS servers and WINS servers for name resolution.

The domain has a certification authority (CA). You run the Get-CACrldistributionPoint cmdlet and receive the output as shown in the following exhibit.



```

Administrator: Windows PowerShell
PS C:\> Get-CACrldistributionPoint

PublishToServer      : True
PublishDeltaToServer : True
AddToCertificateCdp  : False
AddToFreshestCr1    : False
AddToCr1Cdp         : False
AddToCr1Idp         : False
Uri                  : C:\Windows\system32\CertSrv\CertEnroll\<CAName><CRLNameSuffix><DeltaCRLAllowed>.cr1

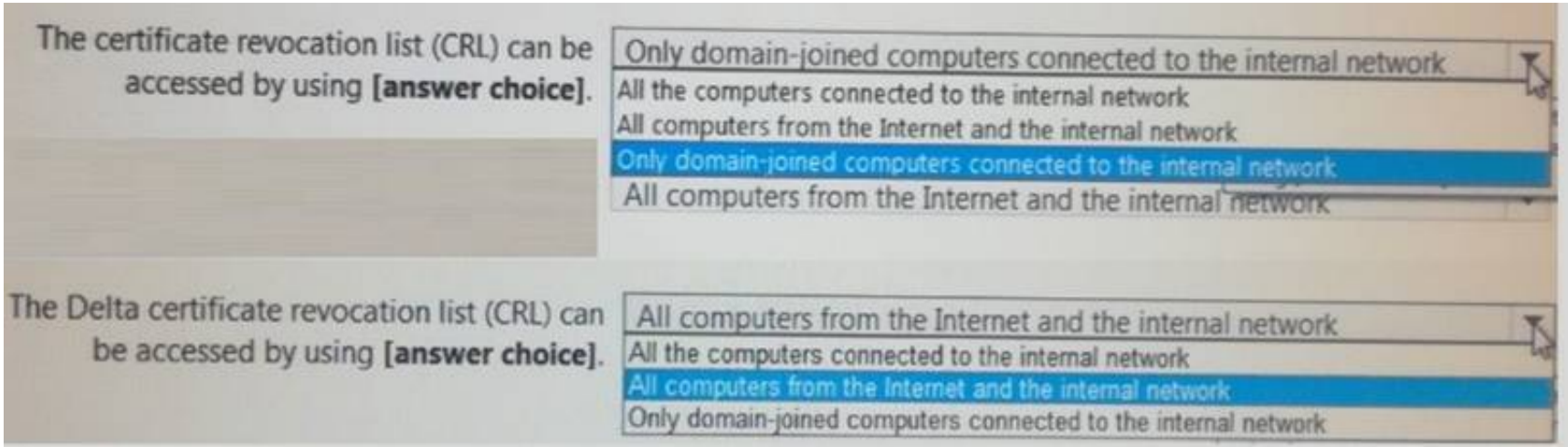
PublishToServer      : True
PublishDeltaToServer : True
AddToCertificateCdp  : True
AddToFreshestCr1    : True
AddToCr1Cdp         : True
AddToCr1Idp         : False
Uri                  : ldap:///CN=<CATruncatedName><CRLNameSuffix>,CN=<ServerShortName>,CN=CDP,CN=Public Key Services,
CN=Services,<ConfigurationContainer><CDPObjecClass>

PublishToServer      : True
PublishDeltaToServer : False
AddToCertificateCdp  : True
AddToFreshestCr1    : False
AddToCr1Cdp         : False
AddToCr1Idp         : False
Uri                  : file:///<ServerDNSName>/CertEnroll/<CAName><CRLNameSuffix><DeltaCRLAllowed>.cr1

PublishToServer      : True
PublishDeltaToServer : True
AddToCertificateCdp  : False
AddToFreshestCr1    : False
AddToCr1Cdp         : False
AddToCr1Idp         : False
Uri                  : \\Server1\Share1\<CAName>.cr1

PublishToServer      : False
PublishDeltaToServer : False
AddToCertificateCdp  : True
AddToFreshestCr1    : True
AddToCr1Cdp         : False
AddToCr1Idp         : False
Uri                  : http://<ServerShortName>/CertEnroll/<CAName><CRLNameSuffix>.cr1

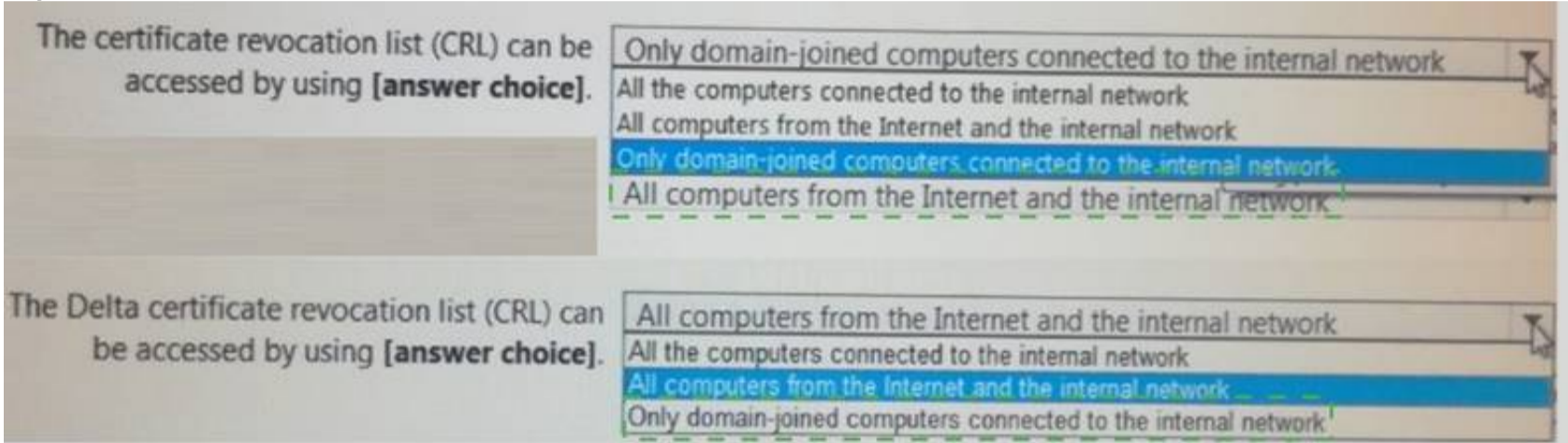
PS C:\>
  
```



- A. Mastered
- B. Not Mastered

Answer: A

Explanation:



NEW QUESTION 232

You have an offline root certification authority (CA) named CA1. CA1 is hosted on a virtual machine. You only turn on CA1 when the CA must be patched or you must generate a key for subordinate CAs. You start CA1, and you discover that the filesystem is corrupted. You resolve the filesystem corruption and discover that you must reload the CA root from a backup. When you attempt to run the Restore-CARoleService cmdlet, you receive the following error message: “The process cannot access the file because it is being used by another process.”

- A. Stop the Active Directory Domain Services (AD DS) service.
- B. Run the Restore-CARoleService cmdlet and specify the path to a valid CA key.
- C. Stop the Active Directory Certificate Services (AD CS) service.
- D. Run the Restore-CARoleService cmdlet and specify the Force parameter.

Answer: C

NEW QUESTION 234

Your network contains an Active Directory forest named contoso.com. You need to add a new domain named fabrikam.com to the forest. What command should you run? To answer, select the appropriate options in the answer area.

Answer Area

▼

Install-ADDSDomain

Install-ADDSDomainController

Install-ADDSEForest

-DomainType

▼

TreeDomain

ChildDomain

-InstallDns:\$true

-NewDomainName fabrikam.com

-ParentDomainName contoso.com

- A. Mastered
- B. Not Mastered

Answer: A

Explanation:

References:
[https://technet.microsoft.com/en-us/library/hh974722\(v=wps.630\).aspx](https://technet.microsoft.com/en-us/library/hh974722(v=wps.630).aspx)

NEW QUESTION 236

Note: This question is part of a series of questions that present the same scenario. Each question in the series contains a unique solution that might meet the stated goals. Some question sets might have more than one correct solution, while others might not have a correct solution.
After you answer a question in this section, you will NOT be able to return to it. As a result, these questions will not appear in the review screen.
Your network contains an Active Directory domain named contoso.com. The domain contains a server named Server1 that runs Windows Server 2016. The Computer account for Server1 is in organizational unit (OU) named OU1.
You create a Group Policy object (GPO) named GPO1 and link GPO1 to OU1.
You need to add a domain user named user1 to the local Administrators group on Server1.
Solution: From the Computer Configuration node of GPO1, you configure the Restricted Groups settings. Does this meet the goal?

- A. Yes
- B. No

Answer: B

NEW QUESTION 239

Your network contains an Active Directory forest named contoso.com. The forest contains a single domain. The domain contains a server named Server1.
An administrator named Admin01 plans to configure Server1 as a standalone certification authority (CA). You need to identify to which group Admin01 must be a member to configure Server1 as a standalone CA.
The solution must use the principle of least privilege.
To which group should you add Admin01?

- A. Administrators on Server1.
- B. Domain Admins in contoso.com
- C. Cert Publishers on Server1
- D. Key Admins in contoso.com

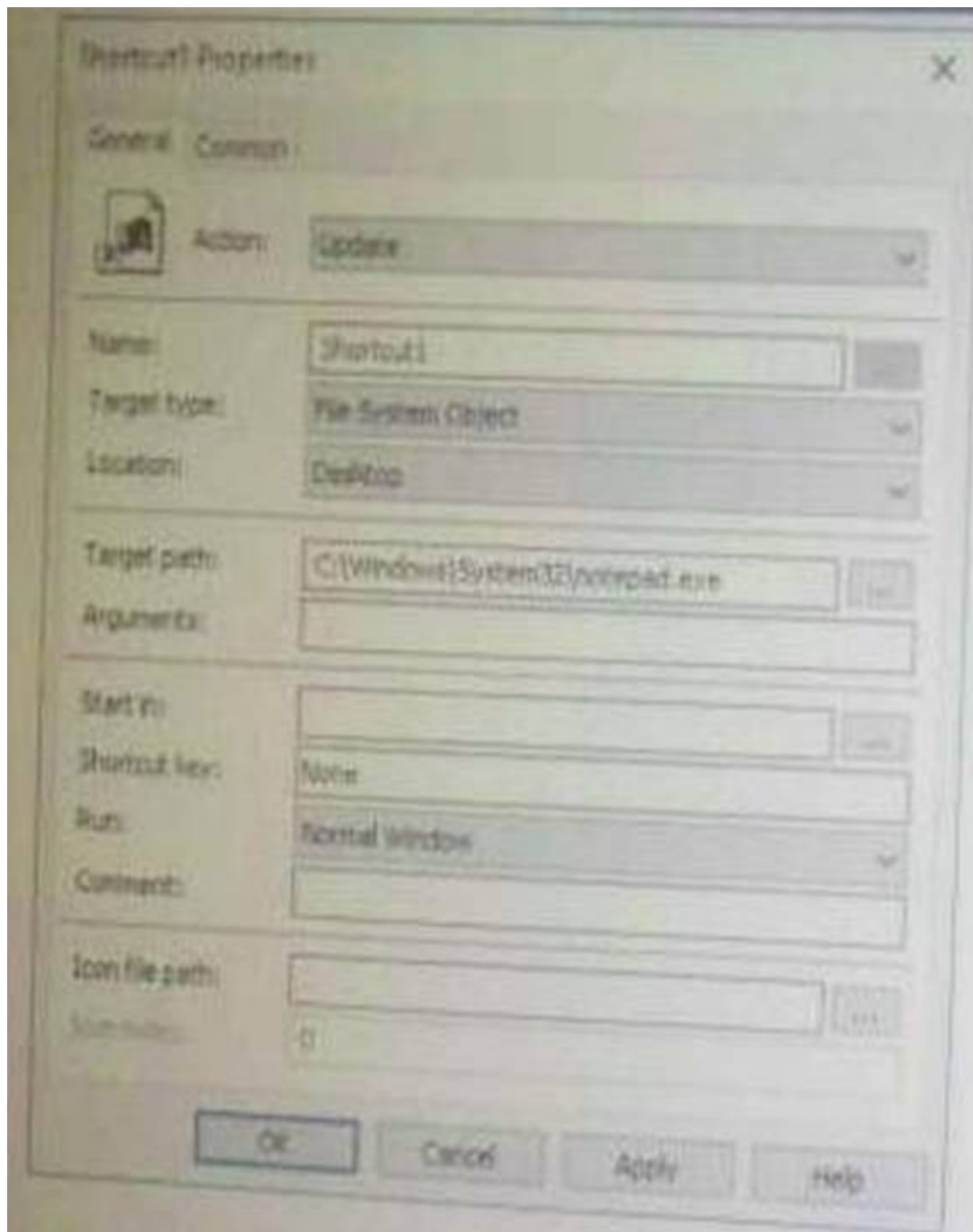
Answer: A

NEW QUESTION 242

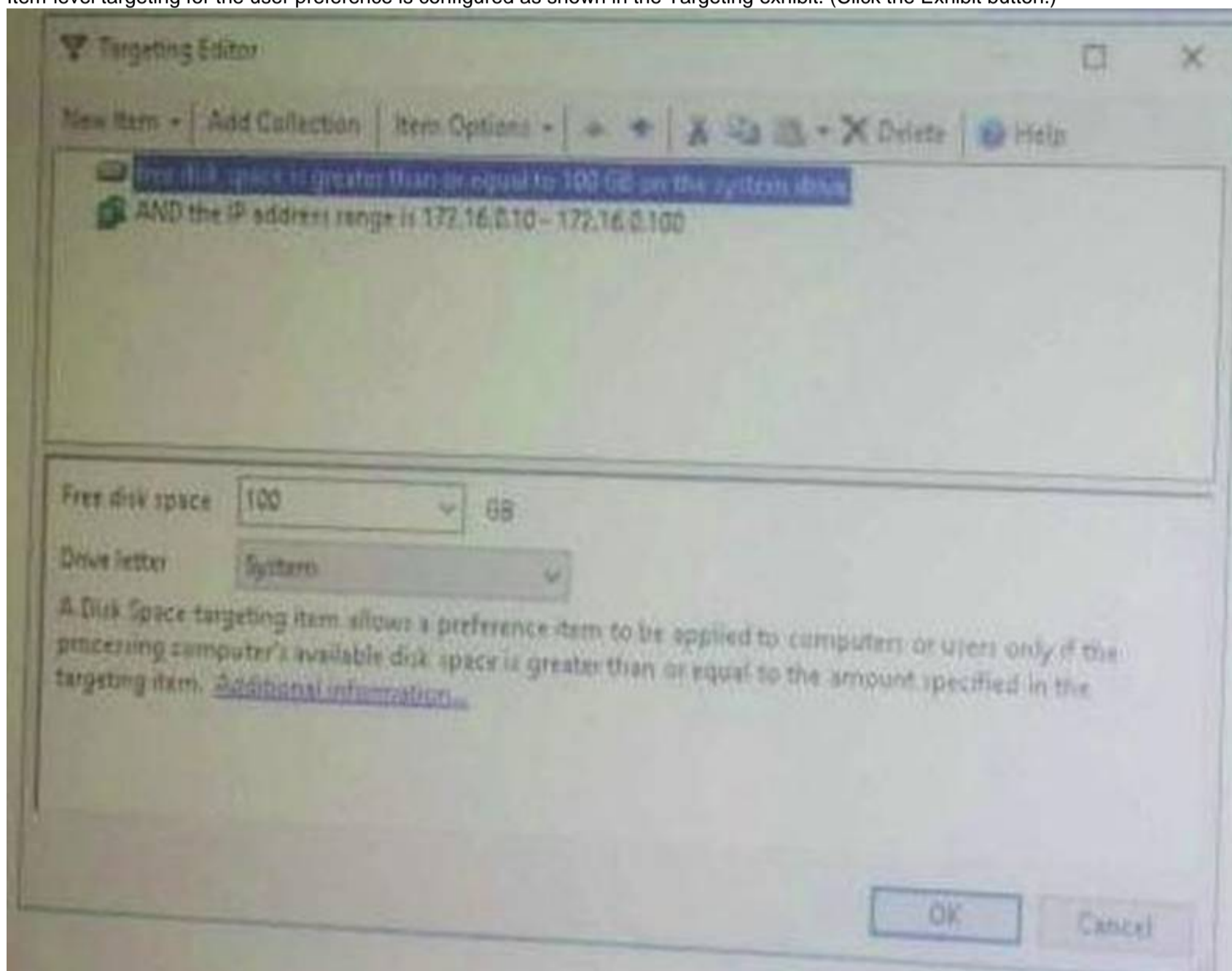
Your network contains an Active Directory domain named contoso.com.
The domain contain the computers configured as shown in the following table.

Name	IP address	Free space on volume C
Client1	172.16.0.5	150 GB
Client2	172.16.0.25	50 GB
Client3	172.16.0.95	200 GB

The domain contains a user named User1.
A Group Policy object (GPO) named GPO1 is linked to the domain. GPO1 contains a user preference that is configured as shown in the Shortcut1 Properties exhibit.



Item-level targeting for the user preference is configured as shown in the Targeting exhibit. (Click the Exhibit button.)



For each of the following statements, select Yes if the statement is true. Otherwise, select No. NOTE: Each correct selection is worth one point.

Statements	Yes	No
If User1 signs in to Client1, Shortcut1 will appear on the desktop.	<input type="radio"/>	<input type="radio"/>
If User1 signs in to Client2, Shortcut1 will appear on the desktop.	<input type="radio"/>	<input type="radio"/>
If User1 signs in to Client3, Shortcut1 will appear on the desktop.	<input type="radio"/>	<input type="radio"/>

- A. Mastered
- B. Not Mastered

Answer: A

Explanation:

Statements	Yes	No
If User1 signs in to Client1, Shortcut1 will appear on the desktop.	<input checked="" type="radio"/>	<input type="radio"/>
If User1 signs in to Client2, Shortcut1 will appear on the desktop.	<input type="radio"/>	<input checked="" type="radio"/>
If User1 signs in to Client3, Shortcut1 will appear on the desktop.	<input checked="" type="radio"/>	<input type="radio"/>

NEW QUESTION 247

Your network contains an Active Directory domain named contoso.com. All the accounts of the users in the sales department are in an organizational unit (OU) named SalesOU.

An application named App1 is deployed to the user accounts in SalesOU by using a Group Policy object (GPO) named Sales GPO.

You need to set the registry value of \HKEY_CURRENT_USER\Software\App1\Collaboration to 0. Solution: You add a computer preference that has a Replace action.

Does this meet the goal?

- A. Yes
- B. NO

Answer: A

NEW QUESTION 252

Your company has multiple branch offices.

The network contains an Active Directory domain named contoso.com.

In one of the branch offices, a new technician is hired to add computers to the domain.

After successfully joining multiple computers to the domain, the technician fails to join any more computers to the domain.

You need to ensure that the technician can join an unlimited number of computers to the domain. What should you do?

- A. Run the Delegation of Control Wizard on the Computers container.
- B. Run the redircmp.exe command.
- C. Modify the Security settings of the technician's user account.
- D. Add the technician to the Windows Authorization Access group.

Answer: A

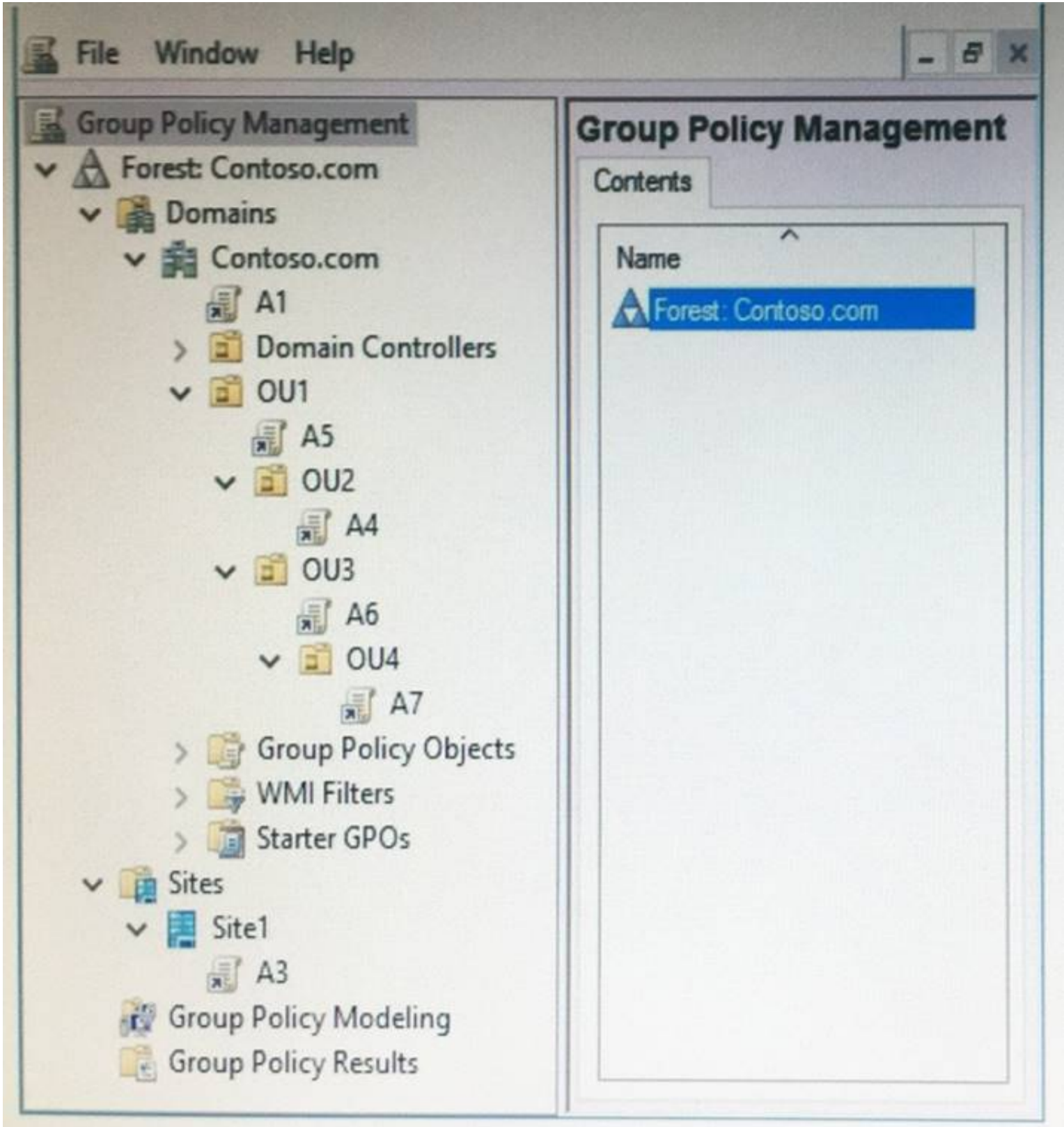
NEW QUESTION 254

Note: This question is part of a series of questions that use the same scenario. For your convenience, the scenario is repeated in each question. Each question presents a different goal and answer choices, but the text of the scenario is exactly the same in each question in this series.

Start of repeated scenario.

Your network contains an Active Directory domain named contoso.com. The domain contains a single site named Site1. All computers are in Site1.

The Group Policy objects (GPOs) for the domain are configured as shown in the exhibit. (Click the Exhibit button.)



The relevant users and client computer in the domain are configured as shown in the following table.

Object name	Object type	Object location
Computer	Computer	OU4
User1	User	OU4
User2	User	OU2

End of repeated scenario.
You plan to enforce the GPO link for A6.
Which five GPOs will apply to User1 in sequence when the user signs in to Computer1 after the link is enforced? To answer, move the appropriate GPOs from the list of GPOs to the answer area and arrange them in the correct order.

GPOs

Answer Area

A1

A2

A3

A4

A5

A6

A7

- A. Mastered
- B. Not Mastered

Answer: A

Explanation:

GPOs

Answer Area

A1

A2

A3

A4

A5

A6

A7

A3

A1

A5

A7

A6

NEW QUESTION 255

You have a server named Server1 that runs Windows Server 2016. Server1 has the Web Application Proxy role service installed. You plan to deploy Remote Desktop Gateway (RD Gateway) services. Clients will connect to the RD Gateway services by using various types of devices including Windows, iOS and Android devices. You need to publish the RD Gateway services through the Web Application Proxy. Which command should you run? To answer, select the appropriate options in the answer area.

Answer Area

Add-WebApplicationProxyApplication
Set-WebApplicationProxyApplication
Set-WebApplicationProxyConfiguration

-BackendServerURL 'https://rdg.contoso.com/rdg1/' -ExternalCertificateThumbprint

'1a2b3c4d5e6f'1a2b3c4d5e6f'1a2b3c4d5e6f1a2b' -ExternalURL 'https://rdg.contoso.com/rdg1' -Name 'RDG1'

-ExternalPreAuthentication

ADFS
ADFSforOAuth
ClientCertificate
PassThrough

-ADFSRelyingPartyName 'Default provider'

-BackendServerAuthenticationSPN 'HTTP/RDG1'

- A. Mastered
B. Not Mastered

Answer: A

Explanation:

Answer Area

Add-WebApplicationProxyApplication
Set-WebApplicationProxyApplication
Set-WebApplicationProxyConfiguration

-BackendServerURL 'https://rdg.contoso.com/rdg1/' -ExternalCertificateThumbprint

'1a2b3c4d5e6f'1a2b3c4d5e6f'1a2b3c4d5e6f1a2b' -ExternalURL 'https://rdg.contoso.com/rdg1' -Name 'RDG1'

-ExternalPreAuthentication

ADFS
ADFSforOAuth
ClientCertificate
PassThrough

-ADFSRelyingPartyName 'Default provider'

-BackendServerAuthenticationSPN 'HTTP/RDG1'

NEW QUESTION 260

Your network contains an Active Directory domain named contoso.com. The domain contains an enterprise certification authority (CA) named CA1. You duplicate the Computer certificate template, and you name the template Cont_Computers. You need to ensure that all of the certificates issued based on Cont_Computers have a key size of 4,096 bits. What should you do?

- A. From the properties of CA1, modify the Security settings.
B. From the properties of CA1, modify the Request Handling settings.
C. From the properties of the Computer template, modify the Key Attestation settings.
D. From the properties of Cont_Computers, modify the Cryptography settings.

Answer: C

NEW QUESTION 263

Your network contains an Active Directory domain named adatum.com. The domain contains the servers configured as shown in the following table:

Server name	Configuration
Server1	Domain controller
Server2	Network controller
Server3	Network Policy Server (NPS) server
Server4	Active Directory Federation Services (AD FS) server
Server5	Host Guardian Service (HSG) server

You have a server named Server6 in the perimeter network. Each server has the local users show in the following table.

User Name	Member of
User1	Administrators
User2	Power Users
User3	Network Configuration Operators
User4	Cryptographic Operators

The domain contains the users shown in the following table.

User Name	Member of
User1	Domain Admins
User2	Server Operators
User3	Network Configuration Operators
User4	Cryptographic Operators

You install a Web Application Proxy on Server6.
You need to configure the Web Application proxy on Server6. The solution must use the principle of least privilege.
Which account should you specify in the Web Application Proxy Configuration Wizard? To answer, select the appropriate options in the answer are.
NOTE: Each correct selection is worth one point.

Answer Area

▼

Adatum\

Server1\

Server2\

Server3\

Server4\

Server5\

▼

User1

User2

User3

User4

- A. Mastered
- B. Not Mastered

Answer: A

Explanation:

The user account used to configure the web application proxy must have local Administrator permission on the WAP server(s), and have access to an account that have local Administrator permissions on the AD FS servers.

References:

<http://www.mistercloudtech.com/2015/11/25/how-to-install-and-configure-web-application-proxy-for-adfs/>

NEW QUESTION 268

Your network contains an Active Directory domain named contoso.com. The network contains several IP subnets. One of the subnets uses a network ID of 192.168.10.0/24.

You link a Group Policy object (GPO) named GPO1 to the domain.

You need to map a drive to a specific file share on the computers in the 192.168.10.0/24 network only. What should you do?

- A. From the User Configuration node of GPO1, configure the Folder Redirection setting
- B. Link a WMI filter to GPO1.
- C. From the Computer Configuration mode of GPO1, configure the Network Connections setting
- D. Link a WMI filter to GPO1.
- E. From the User Configuration node of GPO1, create a Group Policy preference that uses item-level targeting.
- F. From the Computer Configuration node of GPO1, create a Group Policy preference that uses item-level targeting.

Answer: C

NEW QUESTION 272

Your network contains an Active Directory forest named contoso.com. The forest contains the root domain and two child domains named child1.contoso.com and child2.contoso.com. Child1 contains three domain controllers named DC1, DC2, and DC3. Child2 contains one domain controller named

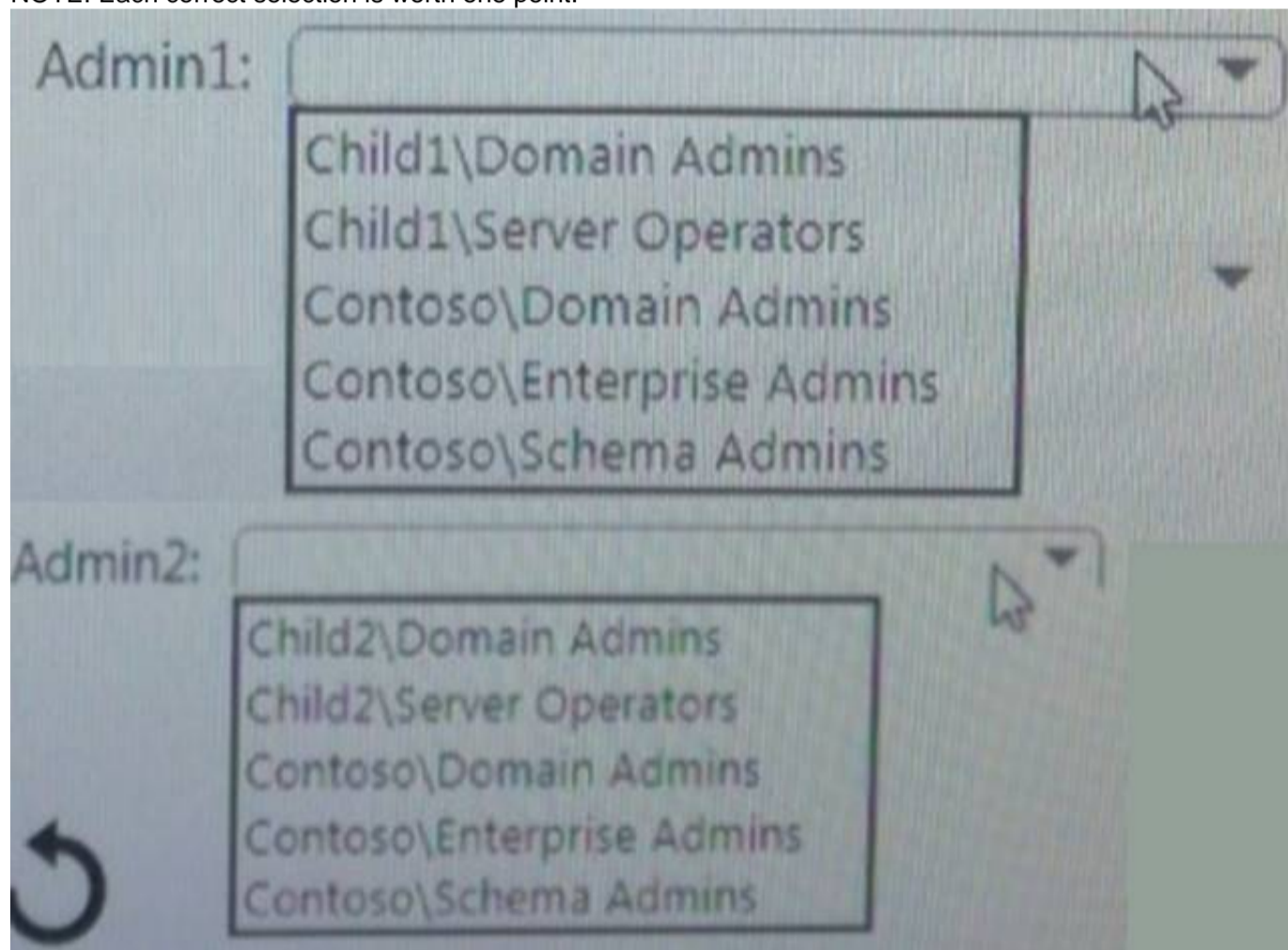
You have two accounts named Child1\Admin1 and Child2\Admin2 that you use to perform administrative tasks. Currently, the accounts can manage only the member servers in their respective domain.

You plan to demote DC3 and to remove the Child2 domain.

You need to ensure that Admin1 can demote DC3 and that Admin2 can demote DC4. The solution must use the principle of least privilege.

To which groups should you add Admin1 and Admin2? To answer, select the appropriate options in the answer area.

NOTE: Each correct selection is worth one point.



- A. Mastered
- B. Not Mastered

Answer: A

Explanation:

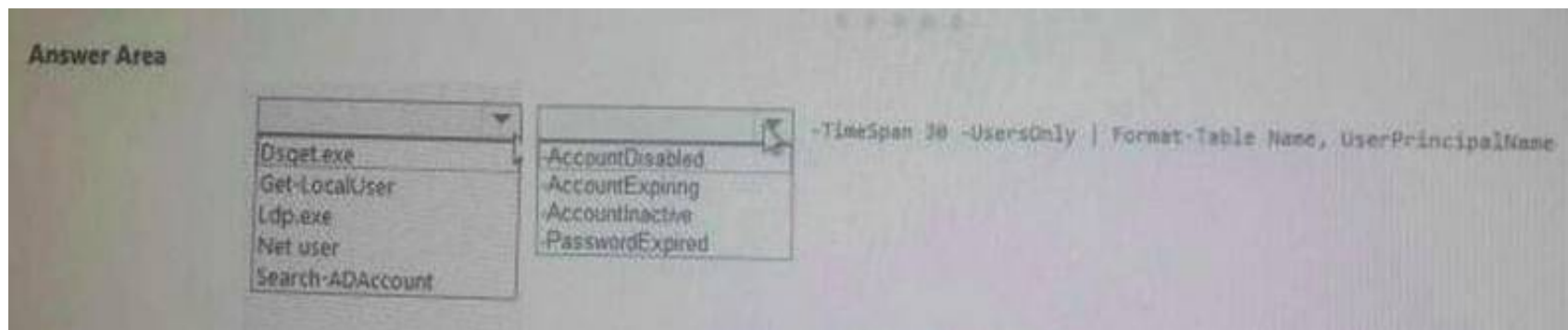
Admin1: Contoso\Domain Admins Admin2: Child2\Server Operators

NEW QUESTION 275

Your network contains an Active Directory domain named contoso.com.

You need to view a list of all the domain user accounts that are enabled. But whose users have not signed in during the last 30 days.

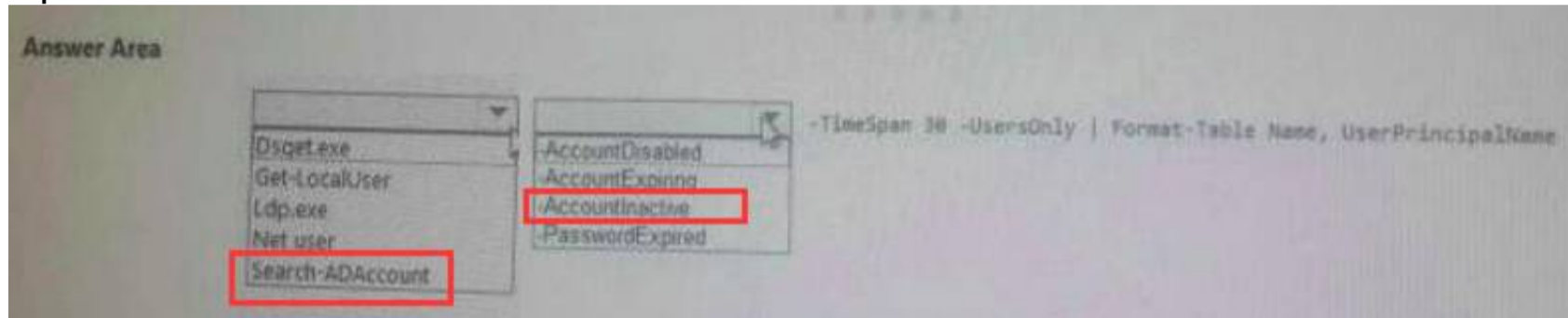
Which command should you run? To answer, select the appropriate options in the answer area. NOTE: Each correct selection is worth one point.



- A. Mastered
- B. Not Mastered

Answer: A

Explanation:



NEW QUESTION 279

Note: This question is part of a series of questions that present the same scenario. Each question in the series contains a unique solution that might meet the stated goals. Some question sets might have more than one correct solution, while others might not have a correct solution.

After you answer a question in this section, you will NOT be able to return to it. As a result, these questions will not appear in the review screen.

Your network contains an Active Directory forest named contoso.com. The forest contains a member server named Server1 that runs Windows Server 2016. All domain controllers run Windows Server 2012 R2.

Contoso.com has the following configuration. PS C:\> (Get-ADForest).ForestMode Windows2008R2Forest

PS C:\> (Get-ADDomain).DomainMode Windows2008R2Domain

PS C:\>

You plan to deploy an Active Directory Federation Services (AD FS) farm on Server1 and to configure device registration.

You need to configure Active Directory to support the planned deployment. Solution: You run adprep.exe from the Windows Server 2016 installation media. Does this meet the goal?

- A. Yes
- B. No

Answer: A

Explanation:

Device Registration requires Windows Server 2012 R2 forest schema.

NEW QUESTION 284

Your network contains an Active Directory domain named contoso.com.

You have an administrative computer named Computer1 that runs Windows Server 2016. From Computer1, you edit a Group Policy object (GPO) named GPO1 as shown in the exhibit.



You receive a new administrative template named Template1. Template1 consists of Template1.adml. Template1 is in English US. You need to ensure that the settings of Template1 appear under the Administrative Templates node. To where should you copy the Template1 files? To answer, select the appropriate options in the answer area. NOTE: Each correct selection is worth one point.

Answer Area

Copy Template1admx to:

<input type="checkbox"/> C:\Windows\en-US
<input type="checkbox"/> C:\Windows\System32\GroupPolicy
<input type="checkbox"/> C:\Windows\System32\PolicyDefinitions
<input type="checkbox"/> C:\Windows\System32\PolicyDefinitions\en-US
<input type="checkbox"/> \\Contoso.com\Sysvol\Contoso.com\Policies\PolicyDefinitions
<input type="checkbox"/> \\Contoso.com\Sysvol\Contoso.com\Policies\PolicyDefinitions\en-US

Copy Template1adml to:

<input type="checkbox"/> C:\Windows\en-US
<input type="checkbox"/> C:\Windows\System32\GroupPolicy
<input type="checkbox"/> C:\Windows\System32\PolicyDefinitions
<input type="checkbox"/> C:\Windows\System32\PolicyDefinitions\en-US
<input type="checkbox"/> \\Contoso.com\Sysvol\Contoso.com\Policies\PolicyDefinitions
<input type="checkbox"/> \\Contoso.com\Sysvol\Contoso.com\Policies\PolicyDefinitions\en-US

- A. Mastered
- B. Not Mastered

Answer: A

Explanation:

Answer Area

Copy Template1admx to:

▼
C:\Windows\en-US
C:\Windows\System32\GroupPolicy
C:\Windows\System32\PolicyDefinitions
C:\Windows\System32\PolicyDefinitions\en-US
\\Contoso.com\Sysvol\Contoso.com\Policies\PolicyDefinitions
\\Contoso.com\Sysvol\Contoso.com\Policies\PolicyDefinitions\en-US

Copy Template1adml to:

▼
C:\Windows\en-US
C:\Windows\System32\GroupPolicy
C:\Windows\System32\PolicyDefinitions
C:\Windows\System32\PolicyDefinitions\en-US
\\Contoso.com\Sysvol\Contoso.com\Policies\PolicyDefinitions
\\Contoso.com\Sysvol\Contoso.com\Policies\PolicyDefinitions\en-US

NEW QUESTION 285

You have a server named Server1 in a workgroup.

You need to configure a Group Policy setting on Server1 that will apply to only non-administrative users. What should you do?

- A. Open Local Group Policy Editor
- B. From the File menu, modify the Options settings.
- C. Run mmc.exe Add the Group Policy Object Editor snap-in and change the Group Policy object (GPO).
- D. Open Local Group Policy Editor
- E. From the View menu, modify the Customize settings.
- F. Open Local Users and Groups, Create a new group Run New-GPO.

Answer: A

NEW QUESTION 286

Note: This question is part of a series of questions that use the same or similar answer choices. An answer choice may be correct for more than one question in the series. Each question is independent of the other questions in this series.

Information and details provided in a question apply only to that question.

Your network contains an Active Directory domain named contoso.com. The domain contains 5,000 user accounts.

You have a Group Policy object (GPO) named DomainPolicy that is linked to the domain and a GPO named DCPolicy that is linked to the Domain Controllers organizational unit (OU).

You need to use the application control policy settings to prevent several applications from running on the network.

What should you do?

- A. From the Computer Configuration node of DCPolicy, modify Security Settings.
- B. From the Computer Configuration node of DomainPolicy, modify Security Settings.
- C. From the Computer Configuration node of DomainPolicy, modify Administrative Templates.
- D. From the User Configuration node of DCPolicy, modify Security Settings.
- E. From the User Configuration node of DomainPolicy, modify Folder Redirection.
- F. From user Configuration node of DomainPolicy, modify Administrative Templates.
- G. From Preferences in the User Configuration node of DomainPolicy, modify Windows Settings.
- H. From Preferences in the Computer Configuration node of DomainPolicy, modify Windows Settings.

Answer: B

NEW QUESTION 287

Note: This question is part of a series of questions that present the same scenario. Each question in the series contains a unique solution that might meet the stated goals. Some question sets might have more than one correct solution, while others might not have a correct solution.

After you answer a question in this section, you will NOT be able to return to it. As a result, these questions will not appear in the review screen.

Your network contains an Active Directory forest named contoso.com. The forest contains an Active Directory Rights Management Services (AD RMS) deployment.

Your company establishes a partnership with another company named Fabrikam, Inc. The network of Fabrikam contains an Active Directory forest named fabrikam.com and an AD RMS deployment.

You need to ensure that the users in contoso.com can access rights protected documents sent by the users in fabrikam.com.

Solution: From AD RMS in contoso.com, you configure fabrikam.com as a trusted user domain. Does this meet the goal?

- A. Yes
- B. No

Answer: B

Explanation:

Contoso would need to be the Trusted User Domain.

NEW QUESTION 289

.....

Thank You for Trying Our Product

We offer two products:

1st - We have Practice Tests Software with Actual Exam Questions

2nd - Questions and Answers in PDF Format

70-742 Practice Exam Features:

- * 70-742 Questions and Answers Updated Frequently
- * 70-742 Practice Questions Verified by Expert Senior Certified Staff
- * 70-742 Most Realistic Questions that Guarantee you a Pass on Your First Try
- * 70-742 Practice Test Questions in Multiple Choice Formats and Updates for 1 Year

100% Actual & Verified — Instant Download, Please Click
[Order The 70-742 Practice Test Here](#)