



Microsoft

Exam Questions 70-740

Installation, Storage, and Compute with Windows Server 2016

NEW QUESTION 1

Note: This question is part of a series of questions that present the same scenario. Each question in the series contains a unique solution that might meet the stated goals. Some question sets might have more than one correct solution, while others might not have a correct solution.

After you answer a question in this section, you will NOT be able to return to it. As a result, these questions will not appear in the review screen.

You have a server named Server1 that runs Windows Server 2016. Server1 has the Hyper-V server role and Docker installed.

You pull the Microsoft/iis Docker image to Server1.

You need to view the available space in the Microsoft/iis Docker image. Solution: You run the command `docker run -d Microsoft/iis`.

You open Disk Management on Server1. Does this meet the goal?

- A. Yes
- B. No

Answer: B

NEW QUESTION 2

Note: This question is part of a series of questions that present the same scenario. Each question in the series contains a unique solution that might meet the stated goals. Some question sets might have more than one correct solution, while others might not have a correct solution.

After you answer a question in this section, you will NOT be able to return to it. As a result, these questions will not appear in the review screen.

You have two servers that run Windows Server 2016.

You have a server named Server1 that runs Windows Server 2016. Server1 has the Hyper-V server role and Docker installed.

You pull the Microsoft/iis Docker image to Server1.

You need to view the available space in the Microsoft/iis Docker image. Solution: You run the following commands.

```
docker run --name container1 --d Microsoft/iis docker exec -i container1 cmd.exe
```

```
dir
```

Does this meet the goal?

- A. Yes
- B. No

Answer: A

Explanation:

References: https://docs.docker.com/engine/reference/commandline/container_exec/#options <https://www.windows-commandline.com/get-file-size-directory-size-command/>

NEW QUESTION 3

You have a Windows Server 2016 failover Cluster named Cluster 1 that contains four nodes named Server1, Server2, Server3, and Server4.

You need to configure Cluster to use directly attached storage to store several virtual machines. You run the `Enable-ClusterStorageSpacesDirect` cmdlet on Server1.

What should you do next?

- A. Run the `Enable-ClusterStorageSpacesDirect` cmdlet on the other three nodes.
- B. Create volumes.
- C. Create storage pool.
- D. Add-ClusterResource cmdlet on all of the nodes.

Answer: B

Explanation:

References:

<https://medium.com/beyond-the-helpdesk/setting-up-and-configuring-storage-spaces-direct-in-windows-server-2016-4d2be85a8f7d>

NEW QUESTION 4

You have a server named Server 1 that runs Windows Server 2016. Windows Defender is enabled on Server1.

Server1 runs an application named App that stores various types of files in Microsoft OneDrive for Business, Microsoft OneDrive, and Microsoft SharePoint Online.

App also interacts with several local services.

You need to prevent Windows Defender from scanning any files opened by App. Should you do on Server1?

- A. Run the `Set-ExecutionPolicy` cmdlet
- B. From the Windows Defender settings, configure a file exclusion.
- C. From the Windows Defender settings, configure a process exclusion.
- D. Modify the cloud-based protection settings in Windows Defender.

Answer: B

Explanation:

References:

<https://www.windowscentral.com/how-exclude-files-and-folders-windows-defender-antivirus-scans>

NEW QUESTION 5

You have a Nano Server named Nano1.

Nano1 is configured to perform real-time protection scans by using Windows Defender.

You need to ensure that all of the files located in `D:\App1\Data` are excluded from the real-time protection scans.

What should you do?

- A. From the properties of `D:\App1\Data` folder, modify the permissions.

- B. Run the Set-MpPreference cmdlet and specify the –ExclusionPath parameter.
- C. From a command prompt, run the attrib command and specify the –s parameter.
- D. Run the Get-ChildItem cmdlet and specify the –Exclude parameter.

Answer: B

NEW QUESTION 6

HOTSPOT

Your network contains an Active Directory forest The forest contains two domain controllers named DC1 and DC2 that run Windows Server 2016. DC1 holds all of the operations master roles.

DC1 experiences a hardware failure

You plan to use an automated process that will create 1000 user accounts You need to ensure that the automated process can complete successfully

Which command should you run? To answer, select the appropriate options in the answer area

Move-ADDirectoryServerOperatinMasterRole
ntdsutil

-identity "DC2" -OperationMasterRole

PDCEmulator
InfrastructureMaster
RIDMaster
SchemaMaster

Seize pdc
-Force

- A. Mastered
- B. Not Mastered

Answer: A

Explanation:

Move-ADDirectoryServerOperatinMasterRole
ntdsutil

-identity "DC2" -OperationMasterRole

PDCEmulator
InfrastructureMaster
RIDMaster
SchemaMaster

Seize pdc
-Force

NEW QUESTION 7

DRAG DROP

You install a new Nano Server named Nano1. Nano1 is a member of a workgroup and has an IP address of 192.168.1.10.

You have a server named Server1 that runs Windows Server 2016.

From Server1, you need to establish a Windows PowerShell session to Nano1.

How should you complete the PowerShell script? To answer, drag the appropriate cmdlets to the correct targets Each cmdlet may be used once, more than once, or not at all. You may need to drag the split bar between panes or scroll to view content.

Enable-PSRemoting

Enter-PSSession

Set-Item

Set-ItemProperty

Set-LocalUser

\$ip = "192.168.1.10"

\$user = "Administrator"

WSMan:\localhost\Client\TrustedHosts
"192.168.1.10"

-ComputerName \$ip -Credential \$user

- A. Mastered
- B. Not Mastered

Answer: A

Explanation:

Enable-PSRemoting	\$ip = "192.168.1.10"
Enter-PSSession	\$user = "Administrator"
Set-Item	WSMan:\localhost\Client\TrustedHosts "192.168.1.10"
Set-ItemProperty	
Set-LocalUser	Enter-PSSession -ComputerName \$ip -Credential \$user

NEW QUESTION 8

HOTSPOT

Your network contains an Active Directory domain named contoso.com. The domain contains a DNS server named Server1 configured to use a forwarder named server2.contoso.com that has an IP address of 10.0.0.10.

You need to prevent Server1 from using root hints if the forwarder is unavailable.

What command should you run? To answer, select the appropriate options in the answer area

<div>▼</div> <div>Suspend-DnsServerZone Set-DnsServer Set-DnsServerForwarder Set-DnsServerRootHint</div>	<div>▼</div> <div>-Name "*" -PassThru -IPAddress 10.0.0.10 -NameServer server2.contoso.com -UseRootHints. \$false</div>
--	---

- A. Mastered
- B. Not Mastered

Answer: A

Explanation:

<div>▼</div> <div>Suspend-DnsServerZone Set-DnsServer Set-DnsServerForwarder Set-DnsServerRootHint</div>	<div>▼</div> <div>-Name "*" -PassThru -IPAddress 10.0.0.10 -NameServer server2.contoso.com -UseRootHints. \$false</div>
---	--

NEW QUESTION 9

DRAG DROP

You are deploying DirectAccess to a server named DA1. DA1 will be located behind a firewall and will have a single network adapter. The intermediary network will be IPv4.

You need to configure firewall to support DirectAccess.

Which firewall rules should you create for each type of traffic? To answer, drag the appropriate ports and protocols to the correct traffic types. Each port and protocol may be used once, more than once, or not at all. You may need to drag the split bar between panes or scroll to view content

Ports and Protocols		Answer Area	
IP protocol ID 1	IP Protocol ID 41	Teredo traffic:	
TCP 443	UDP 3544	6to4 traffic:	
		IP-HTTPS:	

- A. Mastered
- B. Not Mastered

Answer: A

Explanation:

Ports and Protocols		Answer Area	
IP protocol ID 1	IP Protocol ID 41	Teredo traffic:	UDP 3544
TCP 443	UDP 3544	6to4 traffic:	IP Protocol ID 41
		IP-HTTPS:	TCP 443

NEW QUESTION 10

DRAG DROP

You have a server named Server1 that runs Windows Server 2016.

You plan to deploy Internet Information Services (US) in a Windows container. You need to prepare Server1 for the planned deployment.

Which three actions should you perform in sequence? To answer, move the appropriate actions from the list of actions to the answer area and arrange them in the correct order

Actions	Answer Area
Install the Hyper-V server role.	1. <input type="text"/>
Install the Base Container Images.	2. <input type="text"/>
Install the Container feature.	3. <input type="text"/>
Install the Web Server role.	
Install Docker.	

- A. Mastered
- B. Not Mastered

Answer: A

Explanation:

Answer Area

1.

Install the Container feature.
2.

Install Docker.
3.

Install the Base Container Images.

NEW QUESTION 10

You have a server named Server1 that runs Windows Server 2016 You install the Docker daemon on Server1 You need to configure the Docker daemon to accept connections only on TCP port 64500. What should you do?

- A. Run theNew-NetFirewallRulecmdlet
- B. Run theSet-ServiceWindows PowerShell cmdlet.
- C. Edit the daemon.json file.
- D. Edit the configuration json file

Answer: C

NEW QUESTION 14

DRAG DROP

You have a server that runs Windows Server 2016 You install three additional physical disks named Disk1. Disk2. and Disk3 You plan to use these physical disks to store data

You need to create a volume to store data The solution must prevent data loss in the event of a single disk failure

Which three actions should you perform in sequence'? To answer, move the appropriate actions from the list of actions to the answer area and arrange them in the correct order

Create a Virtual Disk.

Create a Storage Pool.

Create a new Storage Tier.

Create a Volume.

Assign a Storage Tier to a virtual disk.

Create a Virtual Disk Clone.

>

<

- A. Mastered
- B. Not Mastered

Answer: A

Explanation:

Create a Storage Pool.

Create a Virtual Disk.

Create a Volume.

NEW QUESTION 17

HOTSPOT

You have a server named Server1 that runs Windows Server 2016. Server1 has the Windows Application proxy role service installed.

You plan to deploy Remote Desktop Gateway (RD Gateway) services. Clients will connect to the RD Gateway services by using various types of devices including Windows, iOS and Android devices.

You need to publish the RD Gateway services through the Web Application Proxy.

Which command should you run? To answer, select the appropriate options in the answer area.

<div><div>▼</div><div>Add-WebApplicationProxyApplication Set-WebApplicationProxyApplication Set-WebApplicationProxyConfiguration</div></div>	<div><div>▼</div><div>-BackendServerURL 'https://rdg.contoso.com/rdg1/' -ExternalCertificateThumbprint '1a2b3c4d5e6f1a2b3c4d5e6f1a2b3c4d5e6f1a2b' -ExternalURL 'https://rdg.contoso.com/rdg1' -Name 'RDG1'</div></div>
<div>-ExternalPreAuthentication</div>	<div><div><div>▼</div><div>ADFS ADFSforOAuth ClientCertificate PassThrough</div></div><div>-ADFSRelyingPartyName 'Default provider'</div></div>
<div>-BackendServerAuthenticationSPN 'HTTP/RDG1'</div>	

- A. Mastered
B. Not Mastered

Answer: A

Explanation:

<div><div>▼</div><div>Add-WebApplicationProxyApplication Set-WebApplicationProxyApplication Set-WebApplicationProxyConfiguration</div></div>	<div><div>▼</div><div>-BackendServerURL 'https://rdg.contoso.com/rdg1/' -ExternalCertificateThumbprint '1a2b3c4d5e6f1a2b3c4d5e6f1a2b3c4d5e6f1a2b' -ExternalURL 'https://rdg.contoso.com/rdg1' -Name 'RDG1'</div></div>
<div>-ExternalPreAuthentication</div>	<div><div><div>▼</div><div>ADFS ADFSforOAuth ClientCertificate PassThrough</div></div><div>-ADFSRelyingPartyName 'Default provider'</div></div>
<div>-BackendServerAuthenticationSPN 'HTTP/RDG1'</div>	

NEW QUESTION 22

Your network contains an Active Directory forest named contoso.com. The forest contains a member server named Server1 that runs Windows Server 2016. Server1 is located in the perimeter network. You install the Active Directory Federation Services server role on Server1. You create an Active Directory Federation Services (ADFS) farm by using a certificate that has a subject name of sts.contoso.com. You need to enable certificate authentication from the Internet on Server1. Which two inbound TCP ports should you open on the firewall? Each correct answer presents part of the solution.

- A. 389
- B. 443
- C. 3389
- D. 8531
- E. 49443

Answer: BE

NEW QUESTION 27

You need to create highly available storage spaces that connect to directly attached storage on the hosts. Which cmdlet should you use?

- A. Enable-ClusterStorageSpacesDirect
- B. Set-StoragePool
- C. Add-ClusterDisk
- D. Update-ClusterVirtualMachineConfiguration

Answer: A

NEW QUESTION 31

You have a server named Server1 that runs Windows Server 2016. You need to configure Server1 as a multitenant RAS Gateway. What should you install on Server1?

- A. the Network Policy and Access Services server role
- B. the Remote Access server role
- C. the Data Center Bridging feature
- D. the Network Controller server role

Answer: B

NEW QUESTION 35

DRAG DROP

Your network contains an Active Directory domain named contoso.com. The domain contains two servers named Server1 and Server2 that run Windows Server 2016.

Server1 has IP Address Management (IPAM) installed. Server2 has Microsoft System Center 2016 Virtual Machine Manager (VMM) installed.

You need to integrate IPAM and VMM.

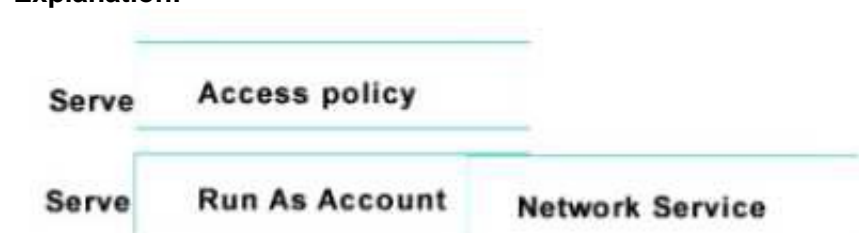
Which types of objects should you create on each server? To answer, drag the appropriate object types to the correct servers. Each object type may be used once, more than once, or not at all. You may need to drag the split bar between panes or scroll to view content.



- A. Mastered
- B. Not Mastered

Answer: A

Explanation:



NEW QUESTION 39

HOTSPOT

Your network contains an Active Directory domain named contoso.com. The domain contains four servers named Server1, Server2, Server3, and Server4 that run

Windows Server 2016.

Server1 has IP Address Management (IPAM) installed Server2, Server3, and Server4 have the DHCP Server role installed IPAM manages Server2, Server3, and Server4.

A domain user named User1 is a member of the groups shown in the following table

Server name	Group
Server1	IPAM Users
Server2	DHCP Administrators
Server3	DHCP Users
Server4	Users

Which actions can User1 perform? To answer, select the appropriate options in the answer area.

Actions	Yes	No
Use the DHCP console on Server1 to create a DHCP scope on Server2.	<input type="radio"/>	<input type="radio"/>
Use the DHCP console on Server1 to create a DHCP scope on Server3.	<input type="radio"/>	<input type="radio"/>
Use the IPAM node of Server Manager on Server1 to create a DHCP scope on Server4.	<input type="radio"/>	<input type="radio"/>

- A. Mastered
- B. Not Mastered

Answer: A

Explanation:

Actions	Yes	No
Use the DHCP console on Server1 to create a DHCP scope on Server2.	<input checked="" type="radio"/>	<input type="radio"/>
Use the DHCP console on Server1 to create a DHCP scope on Server3.	<input type="radio"/>	<input checked="" type="radio"/>
Use the IPAM node of Server Manager on Server1 to create a DHCP scope on Server4.	<input type="radio"/>	<input checked="" type="radio"/>

NEW QUESTION 42

Note: This question is part of a series of questions that use the same similar answer choices An answer choice may be correct for more than one question in the series Each question is independent of the other questions in this series. Information and details provided in a question apply only to that question

You have a two-node Hyper-V cluster named Cluster1 As virtual machine named VM1 runs on Cluster1

You need to configure monitoring of VM1 The solution must move VM1 to a different node if the Print Spooler service on VM1 stops unexpectedly

Which tool should you use?

- A. the clussvc.exe command
- B. the cluster.exe command
- C. the Computer Management console
- D. the configurehyperv.exe command
- E. the Disk Management console
- F. the Failover Cluster Manager console

- G. the Hyper-V Manager console
- H. the Server Manager Desktop app

Answer: F

NEW QUESTION 46

Note: This question is part of a series of questions that present the same scenario. Each question in the series contains a unique solution that might meet the stated goals. Some question sets might have more than one correct solution, while others might not have a correct solution.

After you answer a question in this section, you will NOT be able to return to it. As a result, these questions will not appear in the review screen.

You are a server administrator at a company named Contoso, Ltd.

Contoso has a Windows Server 2016 Hyper-V environment configured as shown in the following table.

Hyper-V host name	Configuration	Virtual switch name
Host1	- Uses an Intel processor - Is a member of a SAN named SAN1	Switch1
Host2	- Uses an AMD processor - Has local storage only	Switch2
Host3	- Uses an Intel processor - Is a member of a SAN named SAN1	Switch1
Host4	- Uses an Intel processor - Has local storage only	Switch2

All of the virtual switches are of the external type.

You need to ensure that you can move virtual machines between the hosts without causing the virtual machines to disconnect from the network.

Solution: You implement live migration by using Host3 and Host4. Does this meet the goal?

- A. Yes
- B. No

Answer: A

NEW QUESTION 49

Note: This question is part of a series of questions that present the same scenario. Each question in the series contains a unique solution that might meet the stated goals. Some question sets might have more than one correct solution, while others might not have a correct solution.

Your network contains an Active Directory forest

You install Windows Server 2016 on 10 virtual machines.

You need to deploy the Web Server (IIS) server role identically to the virtual machines.

Solution: You create a software installation package, and then you publish the package to the virtual machines by using a Group Policy object (GPO)

Does this meet the goal?

- A. Yes
- B. No

Answer: B

NEW QUESTION 52

You have four servers named Server1, Server2, Server3, and Server4 that run Windows Server 2016. Each server has a single 4-TB SATA hard disk.

To each server you attach a new 4-TB SATA hard disk.

You need to create a new storage cluster that uses Storage Spaces Direct. The storage pool must contain all of the new disks.

Which command should you run before you enable Storage Space Direct?

- A. Add-ClusterSharedVolume -Name "Disk 1" -Cluster Cluster1
- B. New-Cluster -Name Cluster1 -Node 'Server1', 'Server2', 'Server3', 'Server4' -NoStorage
- C. Get-ClusterAvailableDisk -Cluster Cluster1 | Add-ClusterDisk
- D. New-ClusterStorageEnclosure -id 1 -name Cluster1 -type jbod -ConnectionString "Server1,Server2,Server3,Server4"

Answer: B

NEW QUESTION 57

DRAG DROP

You have a network that contains several servers that run Windows Server 2016.

You need to use Desired State Configuration (DSC) to configure the servers to meet the following requirements:

- Install the Web Server server role
- Start the World Wide Web Publishing service.

How should you configure the DSC resources? To answer, drag the appropriate values to the correct locations. Each value may be used once, more than once, or not at all. You may need to drag the split bar between panes or scroll to view content.

Values

Name

Service

WindowsFeature

WindowsProcess

Present

Source

Running

Stopped

Answer Area

Value

 WebServerRole

{

Ensure = "

Value

 "

Name = "Web-Server"

}

Value

 WorldWideWebPublishing

{

Name = "W3SVC"

StartupType = "Automatic"

State = "

Value

 "

}

- A. Mastered
B. Not Mastered

Answer: A

Explanation:

Values

Name

Service

WindowsFeature

WindowsProcess

Present

Source

Running

Stopped

Answer Area

WindowsFeature

 WebServerRole

{

Ensure = "

Present

 "

Name = "Web-Server"

}

Service

 WorldWideWebPublishing

{

Name = "W3SVC"

StartupType = "Automatic"

State = "

Running

 "

}

NEW QUESTION 61

After you answer a question in this section, you will NOT be able to return to it. As a result, these questions will not appear in the review screen.
You have a server named Server1 that runs Windows Server 2016.
You plan to use Windows Server Backup to back up all of the data on Server1. You create a new volume on Server1.

You need to ensure that the new volume can be used as a backup target. The backup target must support incremental backups.
Solution: You mount the volume to C:\Backup, and you format the volume by using NTFS. Does this meet the goal?

- A. Yes
- B. No

Answer: A

NEW QUESTION 65

After you answer a question in this section, you will NOT be able to return to it. As a result, these questions will not appear in the review screen.

You have a server named Server1 that runs Windows Server 2016.

You plan to use Windows Server Backup to back up all of the data on Server1. You create a new volume on Server1.

You need to ensure that the new volume can be used as a backup target. The backup target must support incremental backups.

Solution: You mount the volume to C:\Backup, and you format the volume by using exFAT. Does this meet the goal?

- A. Yes
- B. No

Answer: B

NEW QUESTION 68

Your network contains an Active Directory domain. The domain contains a new file server named Server1 that runs a Server Core installation of Windows Server 2016.

Server1 has an ReFS-formatted volume D: and NTFS-formatted volume E: The volumes do not contain any data.

You install the Data Deduplication role service on Server1.

You need to implement Data Deduplication for volumes on D: and E:.

Solution: From Windows PowerShell, you run Enable-DeDupVolume -Volume D:,E:. Does this meet the goal?

- A. Yes
- B. No

Answer: B

NEW QUESTION 71

You have Nano Setver image named Disk1 .vhdx. You mount Disk1 .vhdx.

You need to add a folder that contains several files to the image. Which tool or cmdlet you should use?

- A. Copy-Item
- B. Add-WindowsImage
- C. Add-WindowsPackage
- D. Edit-NanoServerImage

Answer: A

NEW QUESTION 76

Your network contains an Active Directory domain. The domain contains two Hyper-V hosts. You plan to perform live migrations between the hosts.

You need to ensure that the live migration traffic is authenticated by using Kerberos. What should you do first?

- A. From Server Manager, install the Host Guardian Service server role on a domain controller.
- B. From Active Directory Users and Computers, add the computer accounts for both servers to the Cryptographic Operators group.
- C. From Active Directory Users and Computers, modify the Delegation properties of the computer accounts for both servers.
- D. From Server Manager, install the Host Guardian Service server role on both servers.

Answer: C

Explanation:

If you have decided to use Kerberos to authenticate live migration traffic, configure constrained delegation before you proceed to the rest of the steps.

To configure constrained delegation

NEW QUESTION 78

You have a server named Server1 that runs Windows Server 2016 and is configured as a domain controller.

You install the DNS Server server role on Server1.

You plan to store a DNS zone in a custom Active Directory partition. You need to create a new Active Directory partition for the zone. What should you use?

- A. Set-DnsServer
- B. Active Directory Sites and Services
- C. Dns.exe
- D. Dnscmd.exe

Answer: D

Explanation:

[https://technet.microsoft.com/en-us/library/ee649181\(v=ws.10\).aspx](https://technet.microsoft.com/en-us/library/ee649181(v=ws.10).aspx)

NEW QUESTION 82

HOTSPOT
 Your network contains an Active Directory domain named contoso.com. The domain contains three servers named Server1, Server2, and Server3 that run Windows Server 2016.
 Server1 has IP Address Management (IPAM) installed. Server2 and Server3 have the DHCP Server role installed and have several DHCP scopes configured. The IPAM server retrieves data from Server2 and Server3.
 A domain user named User1 is a member of the groups shown in the following table.

Server name	Group
Server2	DHCP Administrators
Server3	DHCP Users

On Server1, you create a security policy for User1. The policy grants the IPAM DHCP Scope Administrator Role with the \Global access scope to the user. Which actions can User1 perform? To answer, select the appropriate options in the answer area.

Answer Area

From Server Manager on Server1, User1 can modify the description of the DHCP scopes:

On Server2 only

On Server3 only

On both Server2 and Server3

From Server Manager on Server1, User1 can create a new DHCP scope:

On Server2 only

On Server3 only

On both Server2 and Server3

- A. Mastered
- B. Not Mastered

Answer: A

Explanation:

[https://technet.microsoft.com/en-us/library/dn268500\(v=ws.11\).aspx](https://technet.microsoft.com/en-us/library/dn268500(v=ws.11).aspx)

NEW QUESTION 83

A company named Contoso, Ltd has five Hyper-V hosts that are configured as shown In the following table.

Hyper-V host name	Configuration
Server1	Windows Sever 2012 R2 and an Intel Xeon E7 processor
Server2	Windows Sever 2012 R2 and an Intel i7 processor
Server3	Windows Sever 2016 and an Intel i7 processor
Server4	Windows Sever 2016 and an AMD Opteron processor
Server5	Windows Sever 2012 R2 and an Intel Xeon E7 processor

What are two valid live migration scenarios for virtual machines in your environment? Each correct answer presents a complete solution.

- A. from Server4 to Server5
- B. from Server1 to Server5
- C. from Server3 to Server4
- D. from Server2 to Server3

Answer: BD

NEW QUESTION 84

You deploy two servers that run Windows Server 2016. You install the Failover Clustering feature on both servers. You need to create a workgroup cluster. What should you do?

- A. Configure both of the server to be in a workgroup named Workgrou
- B. Configure the Cluster Service to log on as Network Servic
- C. Run the New-Cluster cmdlet and specify an administrative access point of None.
- D. Create matching local administrative accounts on both of the server
- E. Assign the same primary DNS suffix to both of the server
- F. Run the New-Cluster cmdlet and specify an administrative access point of DNS.
- G. Configure both of the server to be in a workgroup named Workgrou
- H. Configure the Cluster Service to log on as Network Servic

- I. Run the New-Cluster cmdlet and specify an administrative access point of DNS.
- J. Create matching local administrative accounts on both of the server
- K. Assign the same primary DNS suffix to both of the server
- L. Run the New-Cluster cmdlet and specify an administrative access point of None

Answer: B

Explanation:

References:

<https://rlevchenko.com/2015/09/07/workgroup-and-multi-domain-clusters-in-windows-server-2016/>

NEW QUESTION 88

Note: This question is part of a series of questions that use the same scenario. For your convenience, the scenario is repeated in each question. Each question presents a different goal and answer choices, but the text of the scenario is exactly the same in each question in this series.

Start of repeated scenario

Your network contains an Active Directory domain named contoso.com. The functional level of the forest and the domain is Windows Server 2008 R2. All servers in the domain run Windows Server 2016 Standard. The domain contains 300 client computers that run either Windows 8.1 or Windows 10.

The domain contains nine servers that are configured as shown in the following table.

Server name	Configuration	Planned changes
Server1	Domain controller	None
Server2	File server	Run Failover Clustering and Storage Spaces Direct
Server3	File server	Run Failover Clustering and Storage Spaces Direct
Server4	Hyper-V host	Run shielded virtual machines
Server5	Hyper-V host	None
Server6	Member server	Run Active Directory Federation Services (AD FS)
VM1	Virtual machine hosted on Server 5	None
VM2	Virtual machine hosted on Server 5	None
VM3	Virtual machine hosted on Server 5	None

The virtual machines are configured as follows:

Each virtual machine has one virtual network adapter.

VM1 and VM2 are part of a Network Load Balancing (NLB) cluster.

All of the servers on the network can communicate with all of the virtual machines. End of repeated scenario.

You plan to implement nested virtual machines on VM1.

Which two features will you be prevented from using for VM1?

- A. NUMA spanning
- B. live migration
- C. Dynamic Memory
- D. Smart Pathing

Answer: BC

Explanation:

References:

<https://blogs.technet.microsoft.com/virtualization/2015/10/13/windows-insider-preview-nested-virtualization/>

NEW QUESTION 91

Note: This question is part of a series of questions that use the same scenario. For your convenience, the scenario is repeated in each question. Each question presents a different goal and answer choices, but the text of the scenario is exactly the same in each question in this series.

Start of repeated scenario

Your network contains an Active Directory domain named contoso.com. The functional level of the forest and the domain is Windows Server 2008 R2. All servers in the domain run Windows Server 2016 Standard. The domain contains 300 client computers that run either Windows 8.1 or Windows 10.

The domain contains nine servers that are configured as shown in the following table.

Server name	Configuration	Planned changes
Server1	Domain controller	None
Server2	File server	Run Failover Clustering and Storage Spaces Direct
Server3	File server	Run Failover Clustering and Storage Spaces Direct
Server4	Hyper-V host	Run shielded virtual machines
Server5	Hyper-V host	None
Server6	Member server	Run Active Directory Federation Services (AD FS)
VM1	Virtual machine hosted on Server 5	None
VM2	Virtual machine hosted on Server 5	None
VM3	Virtual machine hosted on Server 5	None

The virtual machines are configured as follows:

- Each virtual machine has one virtual network adapter.
- VM1 and VM2 are part of a Network Load Balancing (NLB) cluster.
- All of the servers on the network can communicate with all of the virtual machines. End of repeated scenario.

You create a new NLB cluster that contains VM3.

You need to ensure that VM2 can remain in the original cluster and be added to the new cluster. What should you do first?

- A. Add a new virtual network adapter to VM2.
- B. Install the Web Application Proxy server role on VM2 and VM3.
- C. Modify the default port rule.
- D. Change the cluster operation mode.

Answer: A

NEW QUESTION 92

HOTSPOT

You have four Hyper-V hosts named Server1, Server2, Server3 and Server4 that run Windows Server 2016. The hosts are nodes in a failover cluster.

The failover cluster is configured to balance virtual machines when a node is more than 80 percent loaded.

You need to configure the failover cluster to balance the virtual machines when the load of a node is more than five percent higher than the average for the nodes.

Which command should you run? To answer, select the appropriate options in the answer area.

Answer Area

▼

Get-Cluster
Get-ClusterNode
Get-ClusterParameter
Get-ClusterResource

▼

AutoBalanceLevel=3
AutoBalancedMode=1
DynamicQuorum=1
MininumPreemptorPriority=5

- A. Mastered
- B. Not Mastered

Answer: A

Explanation:

Answer Area

▼

Get-Cluster

Get-ClusterNode

Get-ClusterParameter

Get-ClusterResource

▼

AutoBalanceLevel=3

AutoBalancedMode=1

DynamicQuorum=1

MininumPreemptorPriority=5

NEW QUESTION 94

HOTSPOT

You have four Hyper-V hosts named Server1, Server2, Server3 and Server4 that run Windows Server 2016. The hosts are nodes in a failover cluster. A virtual machine named VM1 is running in the failover cluster. The role for VM1 is configured as shown in the following exhibit.

```

PS C:\> Get-ClusterGroup vm1 | fl
AntiAffinityClassNames : {}
AutoFailbackType       : 1
ColdStartSetting       : 0
Cluster                : Cluster1
DefaultOwner           : 1
Description             :
GroupType              : VirtualMachine
FailoverPeriod         : 1
FailoverThreshold      : 2
FailbackWindowEnd      : 6
FailbackWindowStart    : 20
IsCoreGroup            : False
Name                   : vm1
OwnerNode              : Server1
PersistentState        : 1
PreferredSite          : {}
Priority                : 2000
ResiliencyPeriod       : 4294967295
State                  : Online
StatusInformation      : 0
Id                     : 5304f522-4fbf-4d06-8fb6-c6b0e2c289e7
  
```

Use the drop-down menus to select the answer choice that completes each statement based on the information presented in the graphic.

Answer Area

If VM1 fails three time in one hour, VM1 will **[answer choice]**.

▼

fail over to a different node

remain in a failed state

restart on the same node

If VM1 fails over to a different node at 14:00, VM1 will fail back to the preferred node **[answer choice]**.

▼

as soon as possible

automatically at 20:00

if the current node is highly loaded

only when triggered manually

- A. Mastered
- B. Not Mastered

Answer: A

Explanation:

References:

[https://msdn.microsoft.com/en-us/library/aa369665\(v=vs.85\).aspx](https://msdn.microsoft.com/en-us/library/aa369665(v=vs.85).aspx)

NEW QUESTION 95

Virtual Network Manager (available from the Hyper-V Manager snap-in) offers three types of virtual networks that you can use to define various networking topologies for virtual machines and the virtualization server.

Which type of virtual network is isolated from all external network traffic on the virtualization server, as well any network traffic between the management operating system and the external network.

- A. Private virtual network
- B. Internal virtual network

Answer: A

NEW QUESTION 98

You want to boot a Linux Operating System with the Secure Boot option enabled in a virtual machine. This will be the first time you boot the OS. What must you do?

- A. Set the -BootOrder to HardDiskDrive
- B. Configure the virtual machine to use the Microsoft UEFI Certificate Authority
- C. You can't enable Secure Boot with Linux
- D. Set -EnableSecureBoot without specifying a template

Answer: B

Explanation:

Linux operating systems running on newer generation virtual machines can boot with the Secure Boot option enabled. Before you boot the virtual machine for the first time, you must configure the virtual machine to use the Microsoft UEFI Certificate Authority. You can do this from Hyper-V Manager, Virtual Machine Manager, or an elevated Windows Powershell session.

NEW QUESTION 101

HOTSPOT

You have two servers named Server1 and Server2 that run Windows Server 2016. Server1 hosts two containers named Container1 and Container2. The servers and the containers are configured as shown in the following table.

Name	IP address	IP subnet mask
Server1	10.10.50.20	255.255.255.0
Server2	10.10.50.21	255.255.255.0
Container1	172.16.1.100	255.255.255.0
Container2	172.16.1.101	255.255.255.0

Container1 hosts a website on port 8080.

You create a port mapping between port 8080 on Container1 and port 80 on Server1.

Which URL can you use to access the website from Server1, Server2, and Container2? To answer, select the appropriate options in the answer area.

NOTE: Each correct selection is worth one point.

Answer Area

Server1:

▼
http://10.10.50.20:80 only
http://10.10.50.20:8080 only
http://172.16.1.100:80 only
http://172.16.1.100:8080 only
http://10.10.50.20:80 and http://172.16.1.100:8080
http://10.10.50.20:8080 and http://172.16.1.100:80

Server2:

▼
http://10.10.50.20:80 only
http://10.10.50.20:8080 only
http://172.16.1.100:80 only
http://172.16.1.100:8080 only
http://10.10.50.20:80 and http://172.16.1.100:8080
http://10.10.50.20:8080 and http://172.16.1.100:80

Server3:

▼
http://10.10.50.20:80 only
http://10.10.50.20:8080 only
http://172.16.1.100:80 only
http://172.16.1.100:8080 only
http://10.10.50.20:80 and http://172.16.1.100:8080
http://10.10.50.20:8080 and http://172.16.1.100:80

- A. Mastered
- B. Not Mastered

Answer: A

Explanation:

Answer Area

Server1:

http://10.10.50.20:80 only
http://10.10.50.20:8080 only
http://172.16.1.100:80 only
http://172.16.1.100:8080 only
http://10.10.50.20:80 and http://172.16.1.100:8080
http://10.10.50.20:8080 and http://172.16.1.100:80

Server2:

http://10.10.50.20:80 only
http://10.10.50.20:8080 only
http://172.16.1.100:80 only
http://172.16.1.100:8080 only
http://10.10.50.20:80 and http://172.16.1.100:8080
http://10.10.50.20:8080 and http://172.16.1.100:80

Server3:

http://10.10.50.20:80 only
http://10.10.50.20:8080 only
http://172.16.1.100:80 only
http://172.16.1.100:8080 only
http://10.10.50.20:80 and http://172.16.1.100:8080
http://10.10.50.20:8080 and http://172.16.1.100:80

NEW QUESTION 106

You have a server named Server1 that runs Windows Server 2016. Server1 has the Containers feature installed. You create a text file that contains the commands that will be used to automate the creation of new containers. You need to ensure that the commands in the text file are used when you create new containers. What should you name the file?

- A. Bootstrap.ini
- B. Config.ini
- C. Dockerfile
- D. Unattend.txt

Answer: C

NEW QUESTION 110

You have a Hyper-V host that runs Windows Server 2016. You need to identify the amount of processor resources consumed by Hyper-V and virtual machines. Which counter should you use from Performance Monitor?

- A. \Hyper-V Hypervisor\Logical Processor
- B. \Hyper-V Hypervisor Root Virtual Processor(_Total)\% Guest Run Time
- C. \Hyper-V Hypervisor Virtual Processor(_Total)\% Hypervisor Run Time
- D. \Hyper-V Hypervisor Virtual Processor(_Total)\% Total Run Time
- E. \Hyper-V Hypervisor Logical Processor(_Total)\% Total Run Time

Answer: A

Explanation:

References:
[https://msdn.microsoft.com/en-us/library/cc768535\(v=bts.10\).aspx](https://msdn.microsoft.com/en-us/library/cc768535(v=bts.10).aspx)

NEW QUESTION 113

You have a Hyper-V host named Server1 that runs Windows Server 2016. Server1 hosts a virtual machine named VM1 that runs Windows Server 2016. You install the Hyper-V server role on VM1. You need to ensure that the virtual machines hosted on VM1 can communicate with the virtual machines hosted on Server1. What should you do?

- A. On Server1, run the Set-VmNetworkAdapterIsolation cmdlet and specify the –MultiTenantStack Off parameter.
- B. On VM1, run the Set-VMNetworkAdapter cmdlet and specify the –MacAddressSpoofing Off parameter.
- C. On VM1, run the Set-VmNetworkAdapterIsolation cmdlet and specify the –MultiTenantStack On parameter.
- D. On Server1, run the Set-VMNetworkAdapter cmdlet and specify the –MacAddressSpoofing On parameter.

Answer: C

Explanation:

References: <https://docs.microsoft.com/en-us/powershell/module/hyper-v/set-vmnetworkadapterisolation?view=win10-ps>

NEW QUESTION 117

DRAG DROP

You have a server named Server1 that runs Windows Server 2016. On Server1, you create a Nano Server image named Disk1.vhdx. You need to start Server1 by using Disk1.vhdx.

Which three actions should you perform in sequence? To answer, move the appropriate actions from the list of actions to the answer area and arrange them in the correct order.

Actions

Restart Server1.

Run the bcdboot.exe command.

Run the bootcfg.exe command.

Run the **Edit-NanoServerImage** cmdlet.

Mark a partition as active.

Mount Disk1.vhdx.

Answer Area



- A. Mastered
- B. Not Mastered

Answer: A

Explanation:

Actions

Restart Server1.

Run the bcdboot.exe command.

Run the bootcfg.exe command.

Run the **Edit-NanoServerImage** cmdlet.

Mark a partition as active.

Mount Disk1.vhdx.

Answer Area

Mount Disk1.vhdx.

Run the bootcfg.exe command.

Restart Server1.



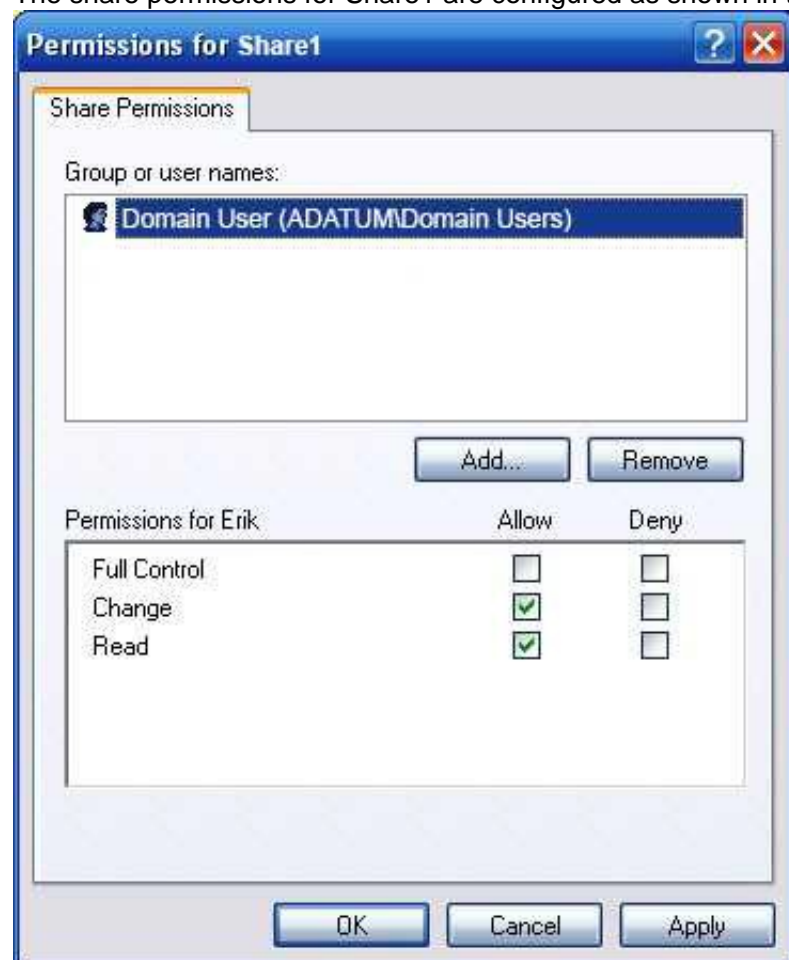
NEW QUESTION 122

HOTSPOT

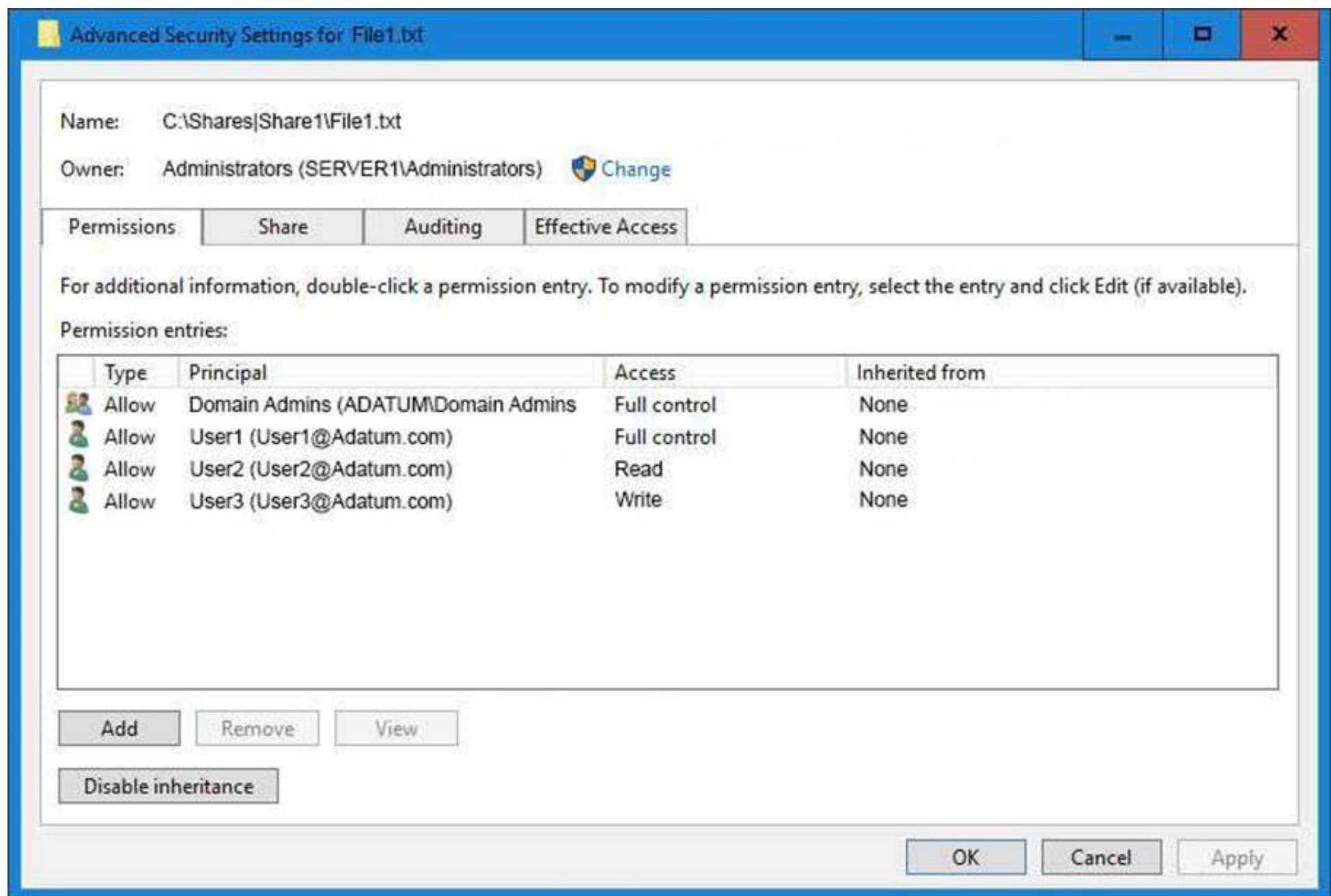
Your network contains an Active Directory domain named Adatum.com. The domain contains two servers named Server1 and Server2 that run Windows Server 2016. The domain contains three users named User1, User2, and User3. Server1 has a share named Share1 that has the following configurations.

```
PresetPathAcl      : System.Security.AccessControl.DirectorySecurity
ShareState         : Online
AvailabilityType   : NonClustered
ShareType          : FileSystemDirectory
FolderEnumerationMode : AccessBased
CachingMode        : Manual
SmbInstance        : Default
CATimeout          : 0
ConcurrentUserLimit : 0
ContinuouslyAvailable : False
CurrentUsers        : 0
Description         :
EncryptData         : False
Name               : Share1
Path               : C:\Shares\Share1
Scoped             : False
ScopeName          : *
SecurityDescriptor  : O:BAG:DUD:(A;OICI;FA;;;WD)
ShadowCopy         : False
Special            : False
Temporary          : False
Volume             : \\?\Volume{d80578cf-0000-0000-0000-501f00000000}\
PSComputerName     :
CimClass           : ROOT\Microsoft\Windows\SMB:MSFT_SmsShare
CimInstanceProperties : {AvailabilityType, CachingMode, CATimeout, ConcurrentUserLimit...}
CimSystemProperties : Microsoft.Management.Infrastructure.CimSystemProperties
```

The share permissions for Share1 are configured as shown in the Share1 exhibit. (Click the Exhibit button.)



Share1 contains a file named File1.txt. The Advanced Security Settings for File1.txt are configured as shown in the File1.txt exhibit. (Click the Exhibit button.)



Advanced Security Settings for File1.txt

Name: C:\Shares\Share1\File1.txt

Owner: Administrators (SERVER1\Administrators) [Change](#)

Permissions | Share | Auditing | Effective Access

For additional information, double-click a permission entry. To modify a permission entry, select the entry and click Edit (if available).

Permission entries:

Type	Principal	Access	Inherited from
Allow	Domain Admins (ADATUM\Domain Admins)	Full control	None
Allow	User1 (User1@Adatum.com)	Full control	None
Allow	User2 (User2@Adatum.com)	Read	None
Allow	User3 (User3@Adatum.com)	Write	None

Add Remove View

Disable inheritance

OK Cancel Apply

For each of the following statement, select Yes if the statement is true. Otherwise, select No.

Answer Area

Statement	Yes	No
When User1 navigates to \\Server1\Share1\, the user can take ownership of File1.txt.	<input type="radio"/>	<input type="radio"/>
When User2 navigates to \\Server1\Share1\, the user will see File1.txt	<input type="radio"/>	<input type="radio"/>
When User3 navigates to \\Server1\Share1\, the user will see File1.txt	<input type="radio"/>	<input type="radio"/>

- A. Mastered
- B. Not Mastered

Answer: A

Explanation:

Answer Area

Statement	Yes	No
When User1 navigates to \\Server1\Share1\, the user can take ownership of File1.txt.	<input type="radio"/>	<input checked="" type="radio"/>
When User2 navigates to \\Server1\Share1\, the user will see File1.txt	<input checked="" type="radio"/>	<input type="radio"/>
When User3 navigates to \\Server1\Share1\, the user will see File1.txt	<input checked="" type="radio"/>	<input type="radio"/>

NEW QUESTION 126

You have a Windows container host named Server1.
On Server1, you create a container named Container1.
You need to mount C:\ContainerFiles from Server1 to Container1. What should you run?

- A. dockerd --storage-opt dm.mountopt=ContainerFiles
- B. docker run -it -v c:\ContainerFiles Container1
- C. dockerd --storage-opt dm.datadev=/c/ContainerFiles
- D. docker run -it -vc:\ContainerFiles:c:\ContainerFiles Container1

Answer: D

NEW QUESTION 129

HOTSPOT

Note: This question is part of a series of questions that use the same scenario. For your convenience, the scenario is repeated in each question. Each question presents a different goal and answer choices, but the text of the scenario is exactly the same in each question in this series.
Your network contains an Active Directory domain named contoso.com. The functional level of the forest and the domain is Windows Server 2008 R2. All servers in the domain run Windows Server 2016 Standard. The domain contains 300 client computers that run either Windows 8.1 or Windows 10.
The domain contains nine servers that are configured as shown in the following table.

Name	Configuration	Planned changes
Server1	Domain controller	None
Server2	File server	Run Failover Clustering and Storage Spaces Direct
Server3	File server	Run Failover Clustering and Storage Spaces Direct
Server4	Hyper-V host	Run shielded virtual machines
Server5	Hyper-V host	None
Server6	Member server	Run Active Directory Federation Services (AD FS)
VM1	Virtual machine hosted on Server5	None
VM2	Virtual machine hosted on Server5	None
VM3	Virtual machine hosted on Server5	None

The virtual machines are configured as follows:
Each virtual machine has one virtual network adapter.
VM1 and VM2 are part of a Network Load Balancing (NLB) cluster.
All of the servers on the network can communicate with all of the virtual machines. For VM1 and VM2, you plan to use live migration between Server4 and Server5.
You need to ensure that when the virtual machines migrate, they maintain connectivity to the network.
Which virtual switch names and connection types should you use on each server? To answer, select the appropriate options in the answer area.

Answer Area

Virtual switch connection type on Server4:

▼

External network

Internal network

Private network

Virtual switch connection type on Server5:

▼

External network

Internal network

Private network

Virtual switch name on Server4:

▼

External on Server4

Network switch

Server4

Virtual switch name on Server5:

▼

External on Server5

Network switch

Server5

- A. Mastered
- B. Not Mastered

Answer: A

Explanation:

Answer Area

Virtual switch connection type on Server4:

▼

External network

Internal network

Private network

Virtual switch connection type on Server5:

▼

External network

Internal network

Private network

Virtual switch name on Server4:

▼

External on Server4

Network switch

Server4

Virtual switch name on Server5:

▼

External on Server5

Network switch

Server5

Note: This question is part of a series of questions that present the same scenario. Each question in the series contains a unique solution that might meet the stated goals. Some question sets might have more than one correct solution, while others might not have a correct solution.

After you answer a question in this section, you will NOT be able to return to it. As a result, these questions will not appear in the review screen.

You are a server administrator at a company named Contoso, Ltd.

Contoso has a Windows Server 2016 Hyper-V environment configured as shown in the following table.

Hyper-V host name	Configuration	Virtual switch name
Host1	- Uses an Intel processor - Is a member of a SAN named SAN1	Switch1
Host2	- Uses an AMD processor - Has local storage only	Switch2
Host3	- Uses an Intel processor - Is a member of a SAN named SAN1	Switch1
Host4	- Uses an Intel processor - Has local storage only	Switch2

All of the virtual switches are of the external type.

You need to ensure that you can move virtual machines between the hosts without causing the virtual machines to disconnect from the network.

Solution: You implement live migration by using Host1 and Host3. Does this meet the goal?

A. Yes

B. No

Answer: A

NEW QUESTION 136

Note: This question is part of a series of questions that present the same scenario. Each question in the series contains a unique solution that might meet the stated goals. Some question sets might have more than one correct solution, while others might not have a correct solution.

After you answer a question in this section, you will NOT be able to return to it. As a result, these questions will not appear in the review screen.

You have a server named Server 1 that runs Windows Server 2016.

You plan to use Windows Server Backup to back up all of the data on Server 1. You create a new volume on Server 1.

You need to ensure that the new volume can be used as a backup target. The backup target must support incremental backups.

Solution: You assign a drive letter to the volume, and you format the volume by using ex FAT. Does this meet the goal?

A. Yes

B. No

Answer: B

NEW QUESTION 139

Your network contains an Active Directory domain named contoso.com. All servers run Windows

Server 2016. As a domain administrator, you log on to a server named Server2 and open Windows Power Shell. You need to establish an interactive Power Shell session to a server named Server 1- Which command should you run?

A. Enable-PSRemoting Server 1

B. Enter-PSSession -ComputerName Server

C. New-PSSession -Name Server

D. Set-PSSession Configuration -AccessMode Remote -Name Server

Answer: B

NEW QUESTION 142

HOTSPOT

You have a server named Server1 that runs Windows Server 2016.

On Server1, you have a custom image of Windows Server 2016 Standard in a file named Image1.wim. The image is mounted to C:\Folder1.

You discover corrupted files in the WinSxS folder of the mounted image.

From the Windows Server 2016 installation media, you mount an image of Windows Server 2016 Standard from Install.wim to C:\Folder2.

You need to repair the corrupted image.

Which command should you run? To answer, select the appropriate options in the answer area. NOTE: Each correct selection is worth one point.

Answer Area

Dism /Cleanup-Image /Image:

▼	▼
C:\Folder1	/CheckIntegrity
C:\Folder1\image1.wim	/RestoreHealth
C:\Folder2\install.wim:1	/ScanHealth
C:\Folder2\Windows	/StartComponentCleanup

/Source:

▼
C:\Folder1
C:\Folder1\image1.wim
C:\Folder2\install.wim:1
C:\Folder2\Windows

- A. Mastered
- B. Not Mastered

Answer: A

Explanation:

References: <https://docs.microsoft.com/en-us/windows-hardware/manufacture/desktop/repair-a-windows-image>

NEW QUESTION 145

You have a Windows Server 2016 fail over cluster named that contains four nodes named Server 1, Server2. Server3. sod Seiver4. Cluster1 hosts 40 virtual machines that are distributed evenly across the nodes.

Server 1 and Server2 are located in a data center in Madrid. Server1 and Server4 are located In a d.ita center in Barcelona.

You need lo entire that when you pause a node, the clustered virtual machines will always attempt to move automatically to another node in the same data center before attempting to move to a node In the other data center.

Which two actions should you perform?

Each correct answer present part of the solution.

- A. Run the New-ClusterFaultDomain cmdlel.
- B. Configure a file share witness for each data center.
- C. Orate on Active Directory site for cacti data center.
- D. Run the Set-Cluster FaultDomain cmdlet.
- E. Run the Add-ClusterGroup cmdlet.
- F. Change the quorum configuration of the cluster to Node Majority.

Answer: CE

NEW QUESTION 150

Your network contains three Hyper-V hosts. You add all of the hosts to a cluster.

You need to create highly available storage spaces that connect to directly attached storage on the hosts.

Which cmdlet should you use?

- A. Enable-CluslerStorageSpacesDirct
- B. Update-CluslerVirtualMachineConfiguration
- C. Add-CluslerDisk
- D. Set-Storage Pool

Answer: A

NEW QUESTION 153

Your network contains an Active Directory domain.

The domain contains two Hyper-V hosts.

You plan to perform live migrations between the hosts.

You need to ensure that the live migration traffic is authenticated by using Kerberos. What should you do first?

- A. From Server Manager, install the Host Guardian Service server role on a domain controller.

- B. From Active Directory Users and Computers, add the computer accounts for both servers to the Cryptographic Operators group.
- C. From Active Directory Users and Computers, modify the Delegation properties of the computer accounts for both servers.
- D. From Server Manager, install the Host Guardian Service server role on both servers.

Answer: C

Explanation:

If you have decided to use Kerberos to authenticate live migration traffic, configure constrained delegation before you proceed to the rest of the steps.

NEW QUESTION 158

HOTSPOT

You have a server named Server1 that runs Windows Servers 2016. Server1 has a storage array that contains multiple storage enclosures. The storage hardware supports enclosure awareness.

You need to implement Storage Spaces on Server1. Storage Spaces must remain available if two enclosures fail. The solution must minimize the number of enclosures required and must provide the fastest possible write performance.

Which configurations should you use? To answer, select the appropriate options in the answer area. NOTE: Each correct selection is worth one point.

Answer Area

Resiliency type:

▼

Dual parity

Single parity

Three-way mirror

Two-way mirror

Number of enclosures:

▼

3

4

5

6

- A. Mastered
- B. Not Mastered

Answer: A

Explanation:

References: <https://docs.microsoft.com/en-us/windows-server/storage/storage-spaces/storage-spaces-fault-tolerance#summary>

NEW QUESTION 160

DRAG DROP

Your network contains an Active Directory domain named contoso.com. The domain has two clusters named FC1 and FC2.

The domain contains servers that run Windows Server 2016. The Servers are configured as shown in the following table.

Server name	Processor	Memory	Cluster
Server1	Intel Xeon E3	128 GB	FC1
Server2	Intel Xeon E3	128 GB	FC1
Server3	Intel Xeon E3	256 GB	FC2
Server4	Intel Xeon E3	256 GB	FC2

Server1 hosts a highly available virtual machine named VM1.

You need to move VM1 from Server1 to Server3 by using live migration.

Which three actions should you perform in sequence? To answer, move the appropriate actions from the list of actions to the answer area and arrange them in the correct order.

Actions

Add the Virtual Machine role

Add the Hyper-V Replica Broker role to FC1 and FC2

Remove VM1 from FC1

Perform live migration from Failover Cluster Manager

Perform live migration from Hyper-V Manager

Answer Area

⏪

⏩

⏮

⏭

⏪

⏩

⏮

⏭

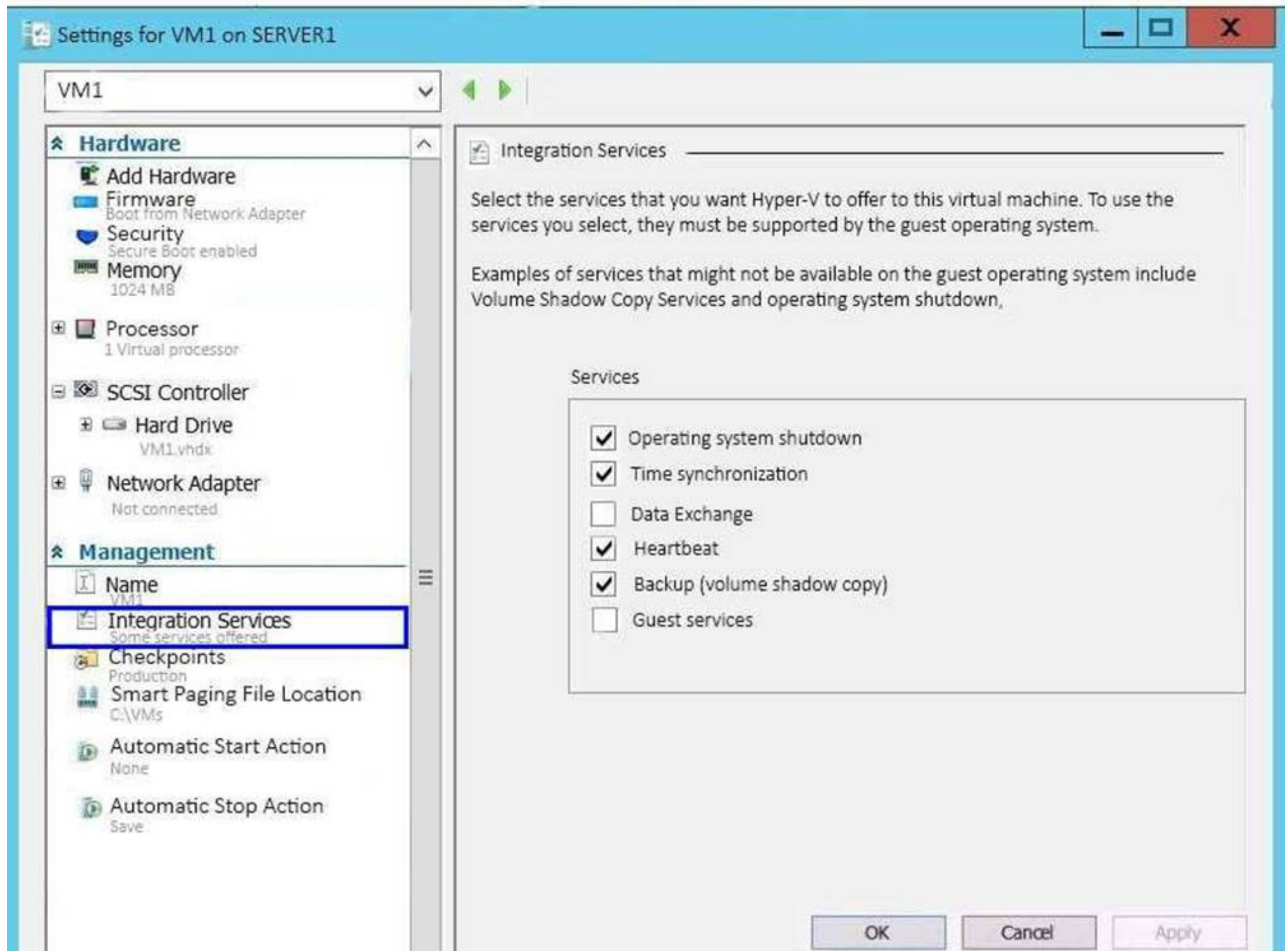
- A. Mastered
- B. Not Mastered

Answer: A

Explanation:
References: <http://www.checkyourlogs.net/?p=16401>

NEW QUESTION 163

Note: This question is part of a series of questions that present the same scenario. Each question in the series contains a unique solution that might meet the stated goals. Some question sets might have more than one correct solution, while others might not have a correct solution.
After you answer a question in this section, you will NOT be able to return to it. As a result, these questions will not appear in the review screen.
You have a Hyper-V host named Server1 that hosts a virtual machine named VM1. Server1 and VM1 run Windows Server 2016.
The settings for VM1 are configured as shown in the exhibit. (Click the Exhibit button.)



You need to ensure that you can use the Copy-VMFile cmdlet on Server1 to copy files from VM1. Solution: You enable the Guest services integration service for VM1.

Does this meet the goal?

- A. Yes
- B. No

Answer: A

Explanation:

References: [https://technet.microsoft.com/en-us/library/dn798297\(v=ws.11\).aspx](https://technet.microsoft.com/en-us/library/dn798297(v=ws.11).aspx)

NEW QUESTION 164

DRAG DROP

You have a server named Server1 that runs Windows Server 2016. Server1 has the Hyper-V server role installed and hosts a virtual machine named VM1.

Server1 has an NVMe storage device. Currently, the device is assigned to VM1 through a Discrete Device Assignment.

You need to make the storage device available to Server1.

Which four actions should you perform in sequence? To answer, move the appropriate actions from the list of actions to the answer area and arrange them in the correct order.

Actions

Answer Area

Run the Remove-VMAssignableDevice cmdlet.

Run the Mount-VMHostAssignableDevice cmdlet.

Stop VM1.

Enable the device in Device Manager.

Disable the device in Device Manager.

- A. Mastered
- B. Not Mastered

Answer: A

Explanation:

If you want to return the device back to its original state, you will need to stop the VM and issue the following cmdlets:
Remove-VMAssignableDevice Mount-VMHostAssignableDevice
You can then re-enable the device in device manager.
References: <https://docs.microsoft.com/en-us/windows-server/virtualization/hyper-v/deploy/deploying-storage-devices-using-dda#removing-a-device-and-returning-it-to-the-host>

NEW QUESTION 166

DRAG DROP
Your network contains an Active Directory domain named contoso.com. The domain contains a server named Server1 that runs Windows Server 2016. Server1 allows inbound connectivity from all computers in the contoso.com domain. Server1 has an IP address of 192.168.0.10. Server1 hosts a Windows container named Container1. Container1 hosts a website that is accessible on port 80. You need to ensure that you can use the Docker client to manage Container1 from any computer in the domain. Which three cmdlets should you run in sequence? To answer, move the appropriate cmdlets from the list of cmdlets to the answer area and arrange them in the correct order.

Actions

Answer Area

Restart-Service docker

New-ContainerNetwork- Name nat1 – Mode NAT- SubnetPrefix 192.168.0.0/24 – GatewatAddress 192.168.0.10

Add-Content 'c:\programdata\docker\config\daemon.json' '{"hosts": [{"tcp://127.0.0.1:80", "npipe://"}]}'

Add-Content 'c:\programdata\docker\config\daemon.json' '{"hosts": [{"tcp://0.0.0.0:2375", "npipe://" }]}'

New-Item-Type File c:\programData\docker\config\daemon.json



- A. Mastered
B. Not Mastered

Answer: A

Explanation:

References:

<https://glennsarti.github.io/blog/getting-started-with-windows-containers/> <https://docs.microsoft.com/en-us/virtualization/windowscontainers/manage-containers/container-networking>

NEW QUESTION 171

Note: This question is part of a series of questions that use the same scenario. For your convenience, the scenario is repeated in each question. Each question presents a different goal and answer choices, but the text of the scenario is exactly the same in each question in this series.

A company named Contoso, Ltd. has several servers that run Windows Server 2016. Contoso has a Hyper-V environment that uses failover clustering and Windows Server Update Services (WSUS). The environment contains several Windows containers and several virtual machines.

The WSUS deployment contains one upstream server that is located on the company's perimeter network and several downstream servers located on the internal network. A firewall separates the upstream server from the downstream servers.

You plan to deploy a human resources application to a new server named HRServer5. HRServer5 contains a FAT32-formatted data volume.

The CIO of Contoso identifies the following requirements for the company's IT department:

Deploy a failover cluster to two new virtual machines.

Store all application databases by using Encrypted File System (EFS).

Ensure that each Windows container has a dedicated IP address assigned by a DHCP server.

Produce a report that lists the processor time used by all of the processes on a server named Server1 for five hours.

Encrypt all communication between the internal network and the perimeter network, including all WSUS communications.

Automatically load balance the virtual machines hosted in the Hyper-V cluster when processor utilization exceeds 70 percent.

Which networking mode should you configure for the Windows containers?

- A. 12tunnel
B. 12bridge
C. network address translation (NAT)
D. transparent

Answer: C

Explanation:

References: <https://blogs.technet.microsoft.com/virtualization/2016/05/05/windows-container-networking/>

NEW QUESTION 174

You have a server named Server1 that runs Windows Server 2016. Server1 has two network adapters that support single root I/O virtualization (SR-IOV). The network adapters are from two different vendors.

You plan to install the Hyper-V server role on Server1, and then to create a virtual machine named VM1 that runs Windows Server 2016. VM1 will use SR-IOV.

You need to ensure that VM1 can use both network adapters for load balancing and failover. What should you do?

- A. On Server1, create two virtual switches without embedded teamin
B. On VM1, create one NIC team.
C. On Server1, create one virtual switch without embedded teamin
D. On VM1, create one NIC team.

- E. On Server1, create one NIC tea
- F. On VM1, create one NIC team.
- G. On Server1, create one virtual switch that has embedded teamin
- H. On VM1, create two NIC teams.

Answer: A

NEW QUESTION 178

You have a server named Server1 that runs Windows Server 2016. Windows Defender is enabled on Server1.

Server1 runs an application named App1 that stores various types of files in Microsoft OneDrive for Business, MicrosoftOneDrive, and Microsoft SharePoint Online. App1 also interacts with several local services.

You need to prevent Windows Defender from scanning any files opened by App1. What should you do on Server1?

- A. Run the Set-ExecutionPolicy cmdlet.
- B. Run the New-AppLockerPolicy cmdlet.
- C. Modify the real-time protection settings in Windows Defender.
- D. Run the Add-MpPreference cmdlet.

Answer: D

Explanation:

References:

<https://docs.microsoft.com/en-us/windows/security/threat-protection/windows-defender-antivirus/configure-proc>

NEW QUESTION 183

.....

About Exambible

[Your Partner of IT Exam](#)

Found in 1998

Exambible is a company specialized on providing high quality IT exam practice study materials, especially Cisco CCNA, CCDA, CCNP, CCIE, Checkpoint CCSE, CompTIA A+, Network+ certification practice exams and so on. We guarantee that the candidates will not only pass any IT exam at the first attempt but also get profound understanding about the certificates they have got. There are so many alike companies in this industry, however, Exambible has its unique advantages that other companies could not achieve.

Our Advances

* 99.9% Uptime

All examinations will be up to date.

* 24/7 Quality Support

We will provide service round the clock.

* 100% Pass Rate

Our guarantee that you will pass the exam.

* Unique Gurantee

If you do not pass the exam at the first time, we will not only arrange FULL REFUND for you, but also provide you another exam of your claim, ABSOLUTELY FREE!

NEW QUESTION 1

Note: This question is part of a series of questions that present the same scenario. Each question in the series contains a unique solution that might meet the stated goals. Some question sets might have more than one correct solution, while others might not have a correct solution.

After you answer a question in this section, you will NOT be able to return to it. As a result, these questions will not appear in the review screen.

You have a server named Server1 that runs Windows Server 2016. Server1 has the Hyper-V server role and Docker installed.

You pull the Microsoft/iis Docker image to Server1.

You need to view the available space in the Microsoft/iis Docker image. Solution: You run the command `docker run -d Microsoft/iis`.

You open Disk Management on Server1. Does this meet the goal?

- A. Yes
- B. No

Answer: B

NEW QUESTION 2

Note: This question is part of a series of questions that present the same scenario. Each question in the series contains a unique solution that might meet the stated goals. Some question sets might have more than one correct solution, while others might not have a correct solution.

After you answer a question in this section, you will NOT be able to return to it. As a result, these questions will not appear in the review screen.

You have two servers that run Windows Server 2016.

You have a server named Server1 that runs Windows Server 2016. Server1 has the Hyper-V server role and Docker installed.

You pull the Microsoft/iis Docker image to Server1.

You need to view the available space in the Microsoft/iis Docker image. Solution: You run the following commands.

```
docker run --name container1 --d Microsoft/iis docker exec -i container1 cmd.exe
```

```
dir
```

Does this meet the goal?

- A. Yes
- B. No

Answer: A

Explanation:

References: https://docs.docker.com/engine/reference/commandline/container_exec/#options <https://www.windows-commandline.com/get-file-size-directory-size-command/>

NEW QUESTION 3

You have a Windows Server 2016 failover Cluster named Cluster 1 that contains four nodes named Server1, Server2, Server3, and Server4.

You need to configure Cluster to use directly attached storage to store several virtual machines. You run the `Enable-ClusterStorageSpacesDirect` cmdlet on Server1.

What should you do next?

- A. Run the `Enable-ClusterStorageSpacesDirect` cmdlet on the other three nodes.
- B. Create volumes.
- C. Create storage pool.
- D. Add-ClusterResource cmdlet on all of the nodes.

Answer: B

Explanation:

References:

<https://medium.com/beyond-the-helpdesk/setting-up-and-configuring-storage-spaces-direct-in-windows-server-2016-4d2be85a8f7d>

NEW QUESTION 4

You have a server named Server 1 that runs Windows Server 2016. Windows Defender is enabled on Server1.

Server1 runs an application named App that stores various types of files in Microsoft OneDrive for Business, Microsoft OneDrive, and Microsoft SharePoint Online.

App also interacts with several local services.

You need to prevent Windows Defender from scanning any files opened by App. Should you do on Server1?

- A. Run the `Set-ExecutionPolicy` cmdlet
- B. From the Windows Defender settings, configure a file exclusion.
- C. From the Windows Defender settings, configure a process exclusion.
- D. Modify the cloud-based protection settings in Windows Defender.

Answer: B

Explanation:

References:

<https://www.windowscentral.com/how-exclude-files-and-folders-windows-defender-antivirus-scans>

NEW QUESTION 5

You have a Nano Server named Nano1.

Nano1 is configured to perform real-time protection scans by using Windows Defender.

You need to ensure that all of the files located in `D:\App1\Data` are excluded from the real-time protection scans.

What should you do?

- A. From the properties of `D:\App1\Data` folder, modify the permissions.

- B. Run the Set-MpPreference cmdlet and specify the –ExclusionPath parameter.
- C. From a command prompt, run the attrib command and specify the –s parameter.
- D. Run the Get-ChildItem cmdlet and specify the –Exclude parameter.

Answer: B

NEW QUESTION 6

HOTSPOT

Your network contains an Active Directory forest. The forest contains two domain controllers named DC1 and DC2 that run Windows Server 2016. DC1 holds all of the operations master roles.

DC1 experiences a hardware failure.

You plan to use an automated process that will create 1000 user accounts. You need to ensure that the automated process can complete successfully.

Which command should you run? To answer, select the appropriate options in the answer area.

Move-ADDirectoryServerOperatinMasterRole
ntdsutil

-identity "DC2" -OperationMasterRole

PDCEmulator
InfrastructureMaster
RIDMaster
SchemaMaster

Seize pdc
-Force

- A. Mastered
- B. Not Mastered

Answer: A

Explanation:

Move-ADDirectoryServerOperatinMasterRole
ntdsutil

-identity "DC2" -OperationMasterRole

PDCEmulator
InfrastructureMaster
RIDMaster
SchemaMaster

Seize pdc
-Force

NEW QUESTION 7

DRAG DROP

You install a new Nano Server named Nano1. Nano1 is a member of a workgroup and has an IP address of 192.168.1.10.

You have a server named Server1 that runs Windows Server 2016.

From Server1, you need to establish a Windows PowerShell session to Nano1.

How should you complete the PowerShell script? To answer, drag the appropriate cmdlets to the correct targets. Each cmdlet may be used once, more than once, or not at all. You may need to drag the split bar between panes or scroll to view content.

Enable-PSRemoting

Enter-PSSession

Set-Item

Set-ItemProperty

Set-LocalUser

\$ip = "192.168.1.10"

\$user = "Administrator"

WSMan:\localhost\Client\TrustedHosts
"192.168.1.10"

-ComputerName \$ip -Credential \$user

- A. Mastered
- B. Not Mastered

Answer: A

Explanation:

Enable-PSRemoting	\$ip = "192.168.1.10"
Enter-PSSession	\$user = "Administrator"
Set-Item	WSMan:\localhost\Client\TrustedHosts "192.168.1.10"
Set-ItemProperty	
Set-LocalUser	Enter-PSSession -ComputerName \$ip -Credential \$user

NEW QUESTION 8

HOTSPOT

Your network contains an Active Directory domain named contoso.com. The domain contains a DNS server named Server1 configured to use a forwarder named server2.contoso.com that has an IP address of 10.0.0.10.

You need to prevent Server1 from using root hints if the forwarder is unavailable.

What command should you run? To answer, select the appropriate options in the answer area

<div>▼</div> <p>Suspend-DnsServerZone Set-DnsServer Set-DnsServerForwarder Set-DnsServerRootHint</p>	<div>▼</div> <p>-Name "*" -PassThru -IPAddress 10.0.0.10 -NameServer server2.contoso.com -UseRootHints. \$false</p>
--	---

- A. Mastered
- B. Not Mastered

Answer: A

Explanation:

<div>▼</div> <p>Suspend-DnsServerZone Set-DnsServer Set-DnsServerForwarder Set-DnsServerRootHint</p>	<div>▼</div> <p>-Name "*" -PassThru -IPAddress 10.0.0.10 -NameServer server2.contoso.com -UseRootHints. \$false</p>
---	--

NEW QUESTION 9

DRAG DROP

You are deploying DirectAccess to a server named DA1. Da1 will be located behind a firewall and will have a single network adapter The intermediary network will be IPv4.

You need to configure firewall to support DirectAccess.

Which firewall rules should you create for each type of traffic? To answer, drag the appropriate ports and protocols to the correct traffic types. Each port and protocol may be used once, more than once, or not at all. You may need to drag the split bar between panes or scroll to view content

Ports and Protocols		Answer Area	
IP protocol ID 1	IP Protocol ID 41	Teredo traffic:	
TCP 443	UDP 3544	6to4 traffic:	
		IP-HTTPS:	

- A. Mastered
- B. Not Mastered

Answer: A

Explanation:

Ports and Protocols		Answer Area	
IP protocol ID 1	IP Protocol ID 41	Teredo traffic:	UDP 3544
TCP 443	UDP 3544	6to4 traffic:	IP Protocol ID 41
		IP-HTTPS:	TCP 443

NEW QUESTION 10

DRAG DROP

You have a server named Server1 that runs Windows Server 2016.

You plan to deploy Internet Information Services (US) in a Windows container. You need to prepare Server1 for the planned deployment.

Which three actions should you perform in sequence? To answer, move the appropriate actions from the list of actions to the answer area and arrange them in the correct order

Actions	Answer Area
Install the Hyper-V server role.	1. <input type="text"/>
Install the Base Container Images.	2. <input type="text"/>
Install the Container feature.	3. <input type="text"/>
Install the Web Server role.	
Install Docker.	

- A. Mastered
- B. Not Mastered

Answer: A

Explanation:

Answer Area

1. Install the Container feature.

2. Install Docker.

3. Install the Base Container Images.

NEW QUESTION 10

You have a server named Server1 that runs Windows Server 2016 You install the Docker daemon on Server1 You need to configure the Docker daemon to accept connections only on TCP port 64500. What should you do?

- A. Run theNew-NetFirewallRulecmdlet
- B. Run theSet-ServiceWindows PowerShell cmdlet.
- C. Edit the daemon.json file.
- D. Edit the configuration json file

Answer: C

NEW QUESTION 14

DRAG DROP

You have a server that runs Windows Server 2016 You install three additional physical disks named Disk1. Disk2. and Disk3 You plan to use these physical disks to store data

You need to create a volume to store data The solution must prevent data loss in the event of a single disk failure

Which three actions should you perform in sequence'? To answer, move the appropriate actions from the list of actions to the answer area and arrange them in the correct order

Create a Virtual Disk.

Create a Storage Pool.

Create a new Storage Tier.

Create a Volume.

Assign a Storage Tier to a virtual disk.

Create a Virtual Disk Clone.

>

<

- A. Mastered
- B. Not Mastered

Answer: A

Explanation:

Create a Storage Pool.

Create a Virtual Disk.

Create a Volume.

NEW QUESTION 17

HOTSPOT

You have a server named Server1 that runs Windows Server 2016. Server1 has the Windows Application proxy role service installed.

You plan to deploy Remote Desktop Gateway (RD Gateway) services. Clients will connect to the RD Gateway services by using various types of devices including Windows, iOS and Android devices.

You need to publish the RD Gateway services through the Web Application Proxy.

Which command should you run? To answer, select the appropriate options in the answer area.

<div><div>▼</div><div>Add-WebApplicationProxyApplication Set-WebApplicationProxyApplication Set-WebApplicationProxyConfiguration</div></div>	<div>-BackendServerURL 'https://rdg.contoso.com/rdg1/'</div> <div>-ExternalCertificateThumbprint '1a2b3c4d5e6f1a2b3c4d5e6f1a2b3c4d5e6f1a2b'</div> <div>-ExternalURL 'https://rdg.contoso.com/rdg1'</div> <div>-Name 'RDG1'</div>
<div>-ExternalPreAuthentication</div>	<div><div>▼</div><div>ADFS ADFSforOAuth ClientCertificate PassThrough</div></div> <div>-ADFSRelyingPartyName 'Default provider'</div>
<div>-BackendServerAuthenticationSPN 'HTTP/RDG1'</div>	

- A. Mastered
B. Not Mastered

Answer: A

Explanation:

<div><div>▼</div><div>Add-WebApplicationProxyApplication Set-WebApplicationProxyApplication Set-WebApplicationProxyConfiguration</div></div>	<div>-BackendServerURL 'https://rdg.contoso.com/rdg1/'</div> <div>-ExternalCertificateThumbprint '1a2b3c4d5e6f1a2b3c4d5e6f1a2b3c4d5e6f1a2b'</div> <div>-ExternalURL 'https://rdg.contoso.com/rdg1'</div> <div>-Name 'RDG1'</div>
<div>-ExternalPreAuthentication</div>	<div><div>▼</div><div>ADFS ADFSforOAuth ClientCertificate PassThrough</div></div> <div>-ADFSRelyingPartyName 'Default provider'</div>
<div>-BackendServerAuthenticationSPN 'HTTP/RDG1'</div>	

NEW QUESTION 22

Your network contains an Active Directory forest named contoso.com. The forest contains a member server named Server1 that runs Windows Server 2016. Server1 is located in the perimeter network. You install the Active Directory Federation Services server role on Server1. You create an Active Directory Federation Services (ADFS) farm by using a certificate that has a subject name of sts.contoso.com. You need to enable certificate authentication from the Internet on Server1. Which two inbound TCP ports should you open on the firewall? Each correct answer presents part of the solution.

- A. 389
- B. 443
- C. 3389
- D. 8531
- E. 49443

Answer: BE

NEW QUESTION 27

You need to create highly available storage spaces that connect to directly attached storage on the hosts. Which cmdlet should you use?

- A. Enable-ClusterStorageSpacesDirect
- B. Set-StoragePool
- C. Add-ClusterDisk
- D. Update-ClusterVirtualMachineConfiguration

Answer: A

NEW QUESTION 31

You have a server named Server1 that runs Windows Server 2016. You need to configure Server1 as a multitenant RAS Gateway. What should you install on Server1?

- A. the Network Policy and Access Services server role
- B. the Remote Access server role
- C. the Data Center Bridging feature
- D. the Network Controller server role

Answer: B

NEW QUESTION 35

DRAG DROP

Your network contains an Active Directory domain named contoso.com. The domain contains two servers named Server1 and Server2 that run Windows Server 2016.

Server1 has IP Address Management (IPAM) installed. Server2 has Microsoft System Center 2016 Virtual Machine Manager (VMM) installed.

You need to integrate IPAM and VMM.

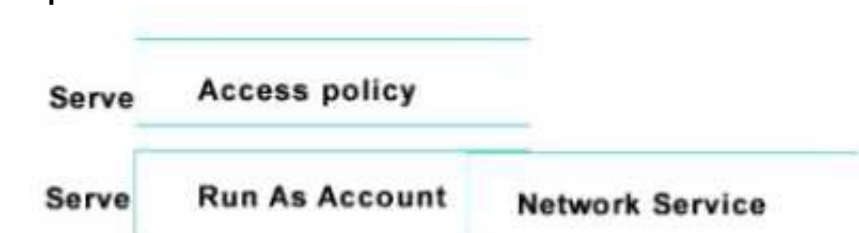
Which types of objects should you create on each server? To answer, drag the appropriate object types to the correct servers. Each object type may be used once, more than once, or not at all. You may need to drag the split bar between panes or scroll to view content.



- A. Mastered
- B. Not Mastered

Answer: A

Explanation:



NEW QUESTION 39

HOTSPOT

Your network contains an Active Directory domain named contoso.com. The domain contains four servers named Server1, Server2, Server3, and Server4 that run

Windows Server 2016.

Server1 has IP Address Management (IPAM) installed Server2, Server3, and Server4 have the DHCP Server role installed IPAM manages Server2, Server3, and Server4.

A domain user named User1 is a member of the groups shown in the following table

Server name	Group
Server1	IPAM Users
Server2	DHCP Administrators
Server3	DHCP Users
Server4	Users

Which actions can User1 perform? To answer, select the appropriate options in the answer area.

Actions	Yes	No
Use the DHCP console on Server1 to create a DHCP scope on Server2.	<input type="radio"/>	<input type="radio"/>
Use the DHCP console on Server1 to create a DHCP scope on Server3.	<input type="radio"/>	<input type="radio"/>
Use the IPAM node of Server Manager on Server1 to create a DHCP scope on Server4.	<input type="radio"/>	<input type="radio"/>

- A. Mastered
- B. Not Mastered

Answer: A

Explanation:

Actions	Yes	No
Use the DHCP console on Server1 to create a DHCP scope on Server2.	<input checked="" type="radio"/>	<input type="radio"/>
Use the DHCP console on Server1 to create a DHCP scope on Server3.	<input type="radio"/>	<input checked="" type="radio"/>
Use the IPAM node of Server Manager on Server1 to create a DHCP scope on Server4.	<input type="radio"/>	<input checked="" type="radio"/>

NEW QUESTION 42

Note: This question is part of a series of questions that use the same similar answer choices An answer choice may be correct for more than one question in the series Each question is independent of the other questions in this series. Information and details provided in a question apply only to that question

You have a two-node Hyper-V cluster named Cluster1 As virtual machine named VM1 runs on Cluster1

You need to configure monitoring of VM1 The solution must move VM1 to a different node if the Print Spooler service on VM1 stops unexpectedly

Which tool should you use?

- A. the clussvc.exe command
- B. the cluster.exe command
- C. the Computer Management console
- D. the configurehyperv.exe command
- E. the Disk Management console
- F. the Failover Cluster Manager console

- G. the Hyper-V Manager console
- H. the Server Manager Desktop app

Answer: F

NEW QUESTION 46

Note: This question is part of a series of questions that present the same scenario. Each question in the series contains a unique solution that might meet the stated goals. Some question sets might have more than one correct solution, while others might not have a correct solution.

After you answer a question in this section, you will NOT be able to return to it. As a result, these questions will not appear in the review screen.

You are a server administrator at a company named Contoso, Ltd.

Contoso has a Windows Server 2016 Hyper-V environment configured as shown in the following table.

Hyper-V host name	Configuration	Virtual switch name
Host1	- Uses an Intel processor - Is a member of a SAN named SAN1	Switch1
Host2	- Uses an AMD processor - Has local storage only	Switch2
Host3	- Uses an Intel processor - Is a member of a SAN named SAN1	Switch1
Host4	- Uses an Intel processor - Has local storage only	Switch2

All of the virtual switches are of the external type.

You need to ensure that you can move virtual machines between the hosts without causing the virtual machines to disconnect from the network.

Solution: You implement live migration by using Host3 and Host4. Does this meet the goal?

- A. Yes
- B. No

Answer: A

NEW QUESTION 49

Note: This question is part of a series of questions that present the same scenario. Each question in the series contains a unique solution that might meet the stated goals. Some question sets might have more than one correct solution, while others might not have a correct solution.

Your network contains an Active Directory forest

You install Windows Server 2016 on 10 virtual machines.

You need to deploy the Web Server (IIS) server role identically to the virtual machines.

Solution: You create a software installation package, and then you publish the package to the virtual machines by using a Group Policy object (GPO)

Does this meet the goal?

- A. Yes
- B. No

Answer: B

NEW QUESTION 52

You have four servers named Server1, Server2, Server3, and Server4 that run Windows Server 2016. Each server has a single 4-TB SATA hard disk.

To each server you attach a new 4-TB SATA hard disk.

You need to create a new storage cluster that uses Storage Spaces Direct. The storage pool must contain all of the new disks.

Which command should you run before you enable Storage Space Direct?

- A. Add-ClusterSharedVolume -Name "Disk 1" -Cluster Cluster1
- B. New-Cluster -Name Cluster1 -Node 'Server1', 'Server2', 'Server3', 'Server4' -NoStorage
- C. Get-ClusterAvailableDisk -Cluster Cluster1 | Add-ClusterDisk
- D. New-ClusterStorageEnclosure -id 1 -name Cluster1 -type jbod -ConnectionString "Server1,Server2,Server3,Server4"

Answer: B

NEW QUESTION 57

DRAG DROP

You have a network that contains several servers that run Windows Server 2016.

You need to use Desired State Configuration (DSC) to configure the servers to meet the following requirements:

- Install the Web Server server role
- Start the World Wide Web Publishing service.

How should you configure the DSC resources? To answer, drag the appropriate values to the correct locations. Each value may be used once, more than once, or not at all. You may need to drag the split bar between panes or scroll to view content.

Values

Name

Service

WindowsFeature

WindowsProcess

Present

Source

Running

Stopped

Answer Area

Value

 WebServerRole

{

Ensure = "

Value

 "

Name = "Web-Server"

}

Value

 WorldWideWebPublishing

{

Name = "W3SVC"

StartupType = "Automatic"

State = "

Value

 "

}

- A. Mastered
- B. Not Mastered

Answer: A

Explanation:

Values

Name

Service

WindowsFeature

WindowsProcess

Present

Source

Running

Stopped

Answer Area

WindowsFeature

 WebServerRole

{

Ensure = "

Present

 "

Name = "Web-Server"

}

Service

 WorldWideWebPublishing

{

Name = "W3SVC"

StartupType = "Automatic"

State = "

Running

 "

}

NEW QUESTION 61

After you answer a question in this section, you will NOT be able to return to it. As a result, these questions will not appear in the review screen.
You have a server named Server1 that runs Windows Server 2016.
You plan to use Windows Server Backup to back up all of the data on Server1. You create a new volume on Server1.

You need to ensure that the new volume can be used as a backup target. The backup target must support incremental backups.
Solution: You mount the volume to C:\Backup, and you format the volume by using NTFS. Does this meet the goal?

- A. Yes
- B. No

Answer: A

NEW QUESTION 65

After you answer a question in this section, you will NOT be able to return to it. As a result, these questions will not appear in the review screen.

You have a server named Server1 that runs Windows Server 2016.

You plan to use Windows Server Backup to back up all of the data on Server1. You create a new volume on Server1.

You need to ensure that the new volume can be used as a backup target. The backup target must support incremental backups.

Solution: You mount the volume to C:\Backup, and you format the volume by using exFAT. Does this meet the goal?

- A. Yes
- B. No

Answer: B

NEW QUESTION 68

Your network contains an Active Directory domain. The domain contains a new file server named Server1 that runs a Server Core installation of Windows Server 2016.

Server1 has an ReFS-formatted volume D: and NTFS-formatted volume E: The volumes do not contain any data.

You install the Data Deduplication role service on Server1.

You need to implement Data Deduplication for volumes on D: and E:.

Solution: From Windows PowerShell, you run Enable-DeDupVolume -Volume D:,E:. Does this meet the goal?

- A. Yes
- B. No

Answer: B

NEW QUESTION 71

You have Nano Setver image named Disk1 .vhdx. You mount Disk1 .vhdx.

You need to add a folder that contains several files to the image. Which tool or cmdlet you should use?

- A. Copy-Item
- B. Add-WindowsImage
- C. Add-WindowsPackage
- D. Edit-NanoServerImage

Answer: A

NEW QUESTION 76

Your network contains an Active Directory domain. The domain contains two Hyper-V hosts. You plan to perform live migrations between the hosts.

You need to ensure that the live migration traffic is authenticated by using Kerberos. What should you do first?

- A. From Server Manager, install the Host Guardian Service server role on a domain controller.
- B. From Active Directory Users and Computers, add the computer accounts for both servers to the Cryptographic Operators group.
- C. From Active Directory Users and Computers, modify the Delegation properties of the computer accounts for both servers.
- D. From Server Manager, install the Host Guardian Service server role on both servers.

Answer: C

Explanation:

If you have decided to use Kerberos to authenticate live migration traffic, configure constrained delegation before you proceed to the rest of the steps.
To configure constrained delegation

NEW QUESTION 78

You have a server named Server1 that runs Windows Server 2016 and is configured as a domain controller.

You install the DNS Server server role on Server1.

You plan to store a DNS zone in a custom Active Directory partition. You need to create a new Active Directory partition for the zone. What should you use?

- A. Set-DnsServer
- B. Active Directory Sites and Services
- C. Dns.exe
- D. Dnscmd.exe

Answer: D

Explanation:

[https://technet.microsoft.com/en-us/library/ee649181\(v=ws.10\).aspx](https://technet.microsoft.com/en-us/library/ee649181(v=ws.10).aspx)

NEW QUESTION 82

HOTSPOT

Your network contains an Active Directory domain named contoso.com. The domain contains three servers named Server1, Server2, and Server3 that run Windows Server 2016. Server1 has IP Address Management (IPAM) installed. Server2 and Server3 have the DHCP Server role installed and have several DHCP scopes configured. The IPAM server retrieves data from Server2 and Server3. A domain user named User1 is a member of the groups shown in the following table.

Server name	Group
Server2	DHCP Administrators
Server3	DHCP Users

On Server1, you create a security policy for User1. The policy grants the IPAM DHCP Scope Administrator Role with the \Global access scope to the user. Which actions can User1 perform? To answer, select the appropriate options in the answer area.

Answer Area

From Server Manager on Server1, User1 can modify the description of the DHCP scopes:

▼

On Server2 only
On Server3 only
On both Server2 and Server3

From Server Manager on Server1, User1 can create a new DHCP scope:

▼

On Server2 only
On Server3 only
On both Server2 and Server3

- A. Mastered
- B. Not Mastered

Answer: A

Explanation:

[https://technet.microsoft.com/en-us/library/dn268500\(v=ws.11\).aspx](https://technet.microsoft.com/en-us/library/dn268500(v=ws.11).aspx)

NEW QUESTION 83

A company named Contoso, Ltd has five Hyper-V hosts that are configured as shown In the following table.

Hyper-V host name	Configuration
Server1	Windows Sever 2012 R2 and an Intel Xeon E7 processor
Server2	Windows Sever 2012 R2 and an Intel i7 processor
Server3	Windows Sever 2016 and an Intel i7 processor
Server4	Windows Sever 2016 and an AMD Opteron processor
Server5	Windows Sever 2012 R2 and an Intel Xeon E7 processor

What are two valid live migration scenarios for virtual machines in your environment? Each correct answer presents a complete solution.

- A. from Server4 to Server5
- B. from Server1 to Server5
- C. from Server3 to Server4
- D. from Server2 to Server3

Answer: BD

NEW QUESTION 84

You deploy two servers that run Windows Server 2016. You install the Failover Clustering feature on both servers. You need to create a workgroup cluster. What should you do?

- A. Configure both of the server to be in a workgroup named Workgrou
- B. Configure the Cluster Service to log on as Network Servic
- C. Run the New-Cluster cmdlet and specify an administrative access point of None.
- D. Create matching local administrative accounts on both of the server
- E. Assign the same primary DNS suffix to both of the server
- F. Run the New-Cluster cmdlet and specify an administrative access point of DNS.
- G. Configure both of the server to be in a workgroup named Workgrou
- H. Configure the Cluster Service to log on as Network Servic

- I. Run the New-Cluster cmdlet and specify an administrative access point of DNS.
- J. Create matching local administrative accounts on both of the server
- K. Assign the same primary DNS suffix to both of the server
- L. Run the New-Cluster cmdlet and specify an administrative access point of None

Answer: B

Explanation:

References:

<https://rlevchenko.com/2015/09/07/workgroup-and-multi-domain-clusters-in-windows-server-2016/>

NEW QUESTION 88

Note: This question is part of a series of questions that use the same scenario. For your convenience, the scenario is repeated in each question. Each question presents a different goal and answer choices, but the text of the scenario is exactly the same in each question in this series.

Start of repeated scenario

Your network contains an Active Directory domain named contoso.com. The functional level of the forest and the domain is Windows Server 2008 R2. All servers in the domain run Windows Server 2016 Standard. The domain contains 300 client computers that run either Windows 8.1 or Windows 10.

The domain contains nine servers that are configured as shown in the following table.

Server name	Configuration	Planned changes
Server1	Domain controller	None
Server2	File server	Run Failover Clustering and Storage Spaces Direct
Server3	File server	Run Failover Clustering and Storage Spaces Direct
Server4	Hyper-V host	Run shielded virtual machines
Server5	Hyper-V host	None
Server6	Member server	Run Active Directory Federation Services (AD FS)
VM1	Virtual machine hosted on Server 5	None
VM2	Virtual machine hosted on Server 5	None
VM3	Virtual machine hosted on Server 5	None

The virtual machines are configured as follows:

Each virtual machine has one virtual network adapter.

VM1 and VM2 are part of a Network Load Balancing (NLB) cluster.

All of the servers on the network can communicate with all of the virtual machines. End of repeated scenario.

You plan to implement nested virtual machines on VM1.

Which two features will you be prevented from using for VM1?

- A. NUMA spanning
- B. live migration
- C. Dynamic Memory
- D. Smart Pathing

Answer: BC

Explanation:

References:

<https://blogs.technet.microsoft.com/virtualization/2015/10/13/windows-insider-preview-nested-virtualization/>

NEW QUESTION 91

Note: This question is part of a series of questions that use the same scenario. For your convenience, the scenario is repeated in each question. Each question presents a different goal and answer choices, but the text of the scenario is exactly the same in each question in this series.

Start of repeated scenario

Your network contains an Active Directory domain named contoso.com. The functional level of the forest and the domain is Windows Server 2008 R2. All servers in the domain run Windows Server 2016 Standard. The domain contains 300 client computers that run either Windows 8.1 or Windows 10.

The domain contains nine servers that are configured as shown in the following table.

Server name	Configuration	Planned changes
Server1	Domain controller	None
Server2	File server	Run Failover Clustering and Storage Spaces Direct
Server3	File server	Run Failover Clustering and Storage Spaces Direct
Server4	Hyper-V host	Run shielded virtual machines
Server5	Hyper-V host	None
Server6	Member server	Run Active Directory Federation Services (AD FS)
VM1	Virtual machine hosted on Server 5	None
VM2	Virtual machine hosted on Server 5	None
VM3	Virtual machine hosted on Server 5	None

The virtual machines are configured as follows:

- Each virtual machine has one virtual network adapter.
- VM1 and VM2 are part of a Network Load Balancing (NLB) cluster.
- All of the servers on the network can communicate with all of the virtual machines. End of repeated scenario.

You create a new NLB cluster that contains VM3.

You need to ensure that VM2 can remain in the original cluster and be added to the new cluster. What should you do first?

- A. Add a new virtual network adapter to VM2.
- B. Install the Web Application Proxy server role on VM2 and VM3.
- C. Modify the default port rule.
- D. Change the cluster operation mode.

Answer: A

NEW QUESTION 92

HOTSPOT

You have four Hyper-V hosts named Server1, Server2, Server3 and Server4 that run Windows Server 2016. The hosts are nodes in a failover cluster.

The failover cluster is configured to balance virtual machines when a node is more than 80 percent loaded.

You need to configure the failover cluster to balance the virtual machines when the load of a node is more than five percent higher than the average for the nodes.

Which command should you run? To answer, select the appropriate options in the answer area.

Answer Area

▼

Get-Cluster
Get-ClusterNode
Get-ClusterParameter
Get-ClusterResource

▼

AutoBalanceLevel=3
AutoBalancedMode=1
DynamicQuorum=1
MininumPreemptorPriority=5

- A. Mastered
- B. Not Mastered

Answer: A

Explanation:

Answer Area

▼

Get-Cluster

Get-ClusterNode

Get-ClusterParameter

Get-ClusterResource

▼

AutoBalanceLevel=3

AutoBalancedMode=1

DynamicQuorum=1

MininumPreemptorPriority=5

NEW QUESTION 94

HOTSPOT

You have four Hyper-V hosts named Server1, Server2, Server3 and Server4 that run Windows Server 2016. The hosts are nodes in a failover cluster. A virtual machine named VM1 is running in the failover cluster. The role for VM1 is configured as shown in the following exhibit.



```

PS C:\> Get-ClusterGroup vm1 | fl

AntiAffinityClassNames : {}
AutoFailbackType       : 1
ColdStartSetting       : 0
Cluster                : Cluster1
DefaultOwner           : 1
Description             :
GroupType              : VirtualMachine
FailoverPeriod         : 1
FailoverThreshold      : 2
FailbackWindowEnd      : 6
FailbackWindowStart    : 20
IsCoreGroup            : False
Name                   : vm1
OwnerNode              : Server1
PersistentState        : 1
PreferredSite          : {}
Priority                : 2000
ResiliencyPeriod       : 4294967295
State                  : Online
StatusInformation      : 0
Id                     : 5304f522-4fbf-4d06-8fb6-c6b0e2c289e7
  
```

Use the drop-down menus to select the answer choice that completes each statement based on the information presented in the graphic.

Answer Area

If VM1 fails three time in one hour, VM1 will **[answer choice]**.

▼

fail over to a different node

remain in a failed state

restart on the same node

If VM1 fails over to a different node at 14:00, VM1 will fail back to the preferred node **[answer choice]**.

▼

as soon as possible

automatically at 20:00

if the current node is highly loaded

only when triggered manually

- A. Mastered
- B. Not Mastered

Answer: A

Explanation:

References:

[https://msdn.microsoft.com/en-us/library/aa369665\(v=vs.85\).aspx](https://msdn.microsoft.com/en-us/library/aa369665(v=vs.85).aspx)

NEW QUESTION 95

Virtual Network Manager (available from the Hyper-V Manager snap-in) offers three types of virtual networks that you can use to define various networking topologies for virtual machines and the virtualization server.

Which type of virtual network is isolated from all external network traffic on the virtualization server, as well any network traffic between the management operating system and the external network.

- A. Private virtual network
- B. Internal virtual network

Answer: A

NEW QUESTION 98

You want to boot a Linux Operating System with the Secure Boot option enabled in a virtual machine.

This will be the first time you boot the OS. What must you do?

- A. Set the -BootOrder to HardDiskDrive
- B. Configure the virtual machine to use the Microsoft UEFI Certificate Authority
- C. You can't enable Secure Boot with Linux
- D. Set -EnableSecureBoot without specifying a template

Answer: B

Explanation:

Linux operating systems running on newer generation virtual machines can boot with the Secure Boot option enabled. Before you boot the virtual machine for the first time, you must configure the virtual machine to use the Microsoft UEFI Certificate Authority. You can do this from Hyper-V Manager, Virtual Machine Manager, or an elevated Windows Powershell session.

NEW QUESTION 101

HOTSPOT

You have two servers named Server1 and Server2 that run Windows Server 2016. Server1 hosts two containers named Container1 and Container2.

The servers and the containers are configured as shown in the following table.

Name	IP address	IP subnet mask
Server1	10.10.50.20	255.255.255.0
Server2	10.10.50.21	255.255.255.0
Container1	172.16.1.100	255.255.255.0
Container2	172.16.1.101	255.255.255.0

Container1 hosts a website on port 8080.

You create a port mapping between port 8080 on Container1 and port 80 on Server1.

Which URL can you use to access the website from Server1, Server2, and Container2? To answer, select the appropriate options in the answer area.

NOTE: Each correct selection is worth one point.

Answer Area

Server1:

http://10.10.50.20:80 only
http://10.10.50.20:8080 only
http://172.16.1.100:80 only
http://172.16.1.100:8080 only
http://10.10.50.20:80 and http://172.16.1.100:8080
http://10.10.50.20:8080 and http://172.16.1.100:80

Server2:

http://10.10.50.20:80 only
http://10.10.50.20:8080 only
http://172.16.1.100:80 only
http://172.16.1.100:8080 only
http://10.10.50.20:80 and http://172.16.1.100:8080
http://10.10.50.20:8080 and http://172.16.1.100:80

Server3:

http://10.10.50.20:80 only
http://10.10.50.20:8080 only
http://172.16.1.100:80 only
http://172.16.1.100:8080 only
http://10.10.50.20:80 and http://172.16.1.100:8080
http://10.10.50.20:8080 and http://172.16.1.100:80

- A. Mastered
- B. Not Mastered

Answer: A

Explanation:

Answer Area

Server1:

http://10.10.50.20:80 only
http://10.10.50.20:8080 only
http://172.16.1.100:80 only
http://172.16.1.100:8080 only
http://10.10.50.20:80 and http://172.16.1.100:8080
http://10.10.50.20:8080 and http://172.16.1.100:80

Server2:

http://10.10.50.20:80 only
http://10.10.50.20:8080 only
http://172.16.1.100:80 only
http://172.16.1.100:8080 only
http://10.10.50.20:80 and http://172.16.1.100:8080
http://10.10.50.20:8080 and http://172.16.1.100:80

Server3:

http://10.10.50.20:80 only
http://10.10.50.20:8080 only
http://172.16.1.100:80 only
http://172.16.1.100:8080 only
http://10.10.50.20:80 and http://172.16.1.100:8080
http://10.10.50.20:8080 and http://172.16.1.100:80

NEW QUESTION 106

You have a server named Server1 that runs Windows Server 2016. Server1 has the Containers feature installed. You create a text file that contains the commands that will be used to automate the creation of new containers. You need to ensure that the commands in the text file are used when you create new containers. What should you name the file?

- A. Bootstrap.ini
- B. Config.ini
- C. Dockerfile
- D. Unattend.txt

Answer: C

NEW QUESTION 110

You have a Hyper-V host that runs Windows Server 2016. You need to identify the amount of processor resources consumed by Hyper-V and virtual machines. Which counter should you use from Performance Monitor?

- A. \Hyper-V Hypervisor\Logical Processor
- B. \Hyper-V Hypervisor Root Virtual Processor(_Total)\% Guest Run Time
- C. \Hyper-V Hypervisor Virtual Processor(_Total)\% Hypervisor Run Time
- D. \Hyper-V Hypervisor Virtual Processor(_Total)\% Total Run Time
- E. \Hyper-V Hypervisor Logical Processor(_Total)\% Total Run Time

Answer: A

Explanation:

References:
[https://msdn.microsoft.com/en-us/library/cc768535\(v=bts.10\).aspx](https://msdn.microsoft.com/en-us/library/cc768535(v=bts.10).aspx)

NEW QUESTION 113

You have a Hyper-V host named Server1 that runs Windows Server 2016. Server1 hosts a virtual machine named VM1 that runs Windows Server 2016. You install the Hyper-V server role on VM1. You need to ensure that the virtual machines hosted on VM1 can communicate with the virtual machines hosted on Server1. What should you do?

- A. On Server1, run the Set-VmNetworkAdapterIsolation cmdlet and specify the –MultiTenantStack Off parameter.
- B. On VM1, run the Set-VMNetworkAdapter cmdlet and specify the –MacAddressSpoofing Off parameter.
- C. On VM1, run the Set-VmNetworkAdapterIsolation cmdlet and specify the –MultiTenantStack On parameter.
- D. On Server1, run the Set-VMNetworkAdapter cmdlet and specify the –MacAddressSpoofing On parameter.

Answer: C

Explanation:

References: <https://docs.microsoft.com/en-us/powershell/module/hyper-v/set-vmnetworkadapterisolation?view=win10-ps>

NEW QUESTION 117

DRAG DROP

You have a server named Server1 that runs Windows Server 2016. On Server1, you create a Nano Server image named Disk1.vhdx. You need to start Server1 by using Disk1.vhdx.

Which three actions should you perform in sequence? To answer, move the appropriate actions from the list of actions to the answer area and arrange them in the correct order.

Actions

Restart Server1.

Run the bcdboot.exe command.

Run the bootcfg.exe command.

Run the **Edit-NanoServerImage** cmdlet.

Mark a partition as active.

Mount Disk1.vhdx.

Answer Area

<

>

↑

↓

- A. Mastered
- B. Not Mastered

Answer: A

Explanation:

Actions

Restart Server1.

Run the bcdboot.exe command.

Run the bootcfg.exe command.

Run the **Edit-NanoServerImage** cmdlet.

Mark a partition as active.

Mount Disk1.vhdx.

Answer Area

<

>

Mount Disk1.vhdx.

Run the bootcfg.exe command.

Restart Server1.

↑

↓

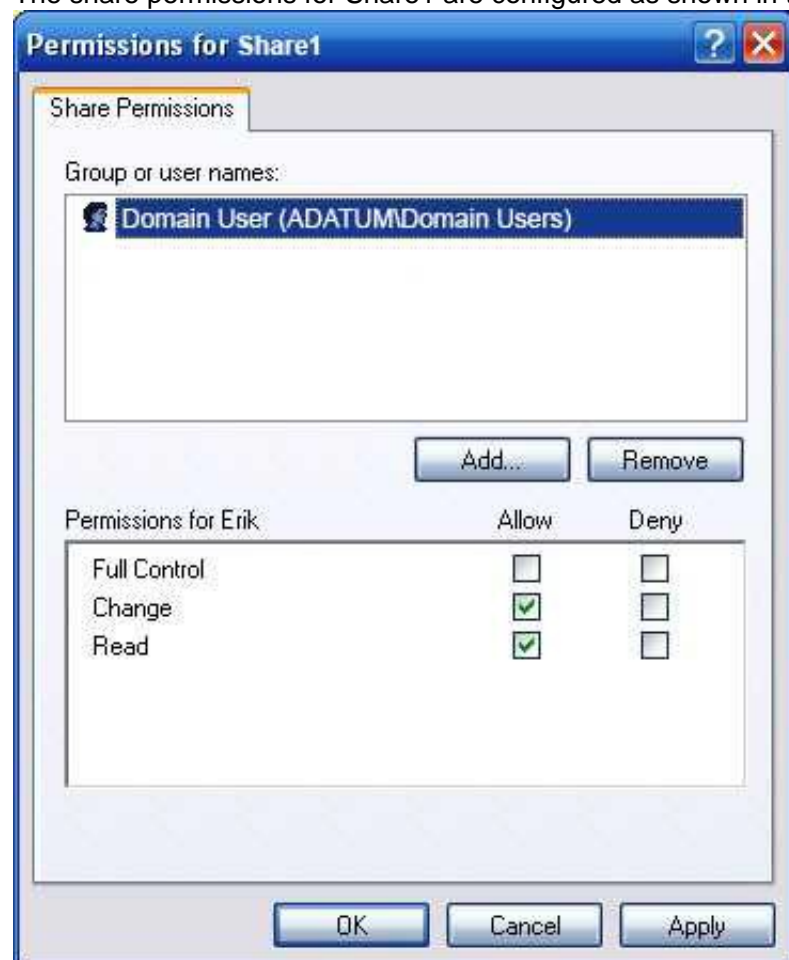
NEW QUESTION 122

HOTSPOT

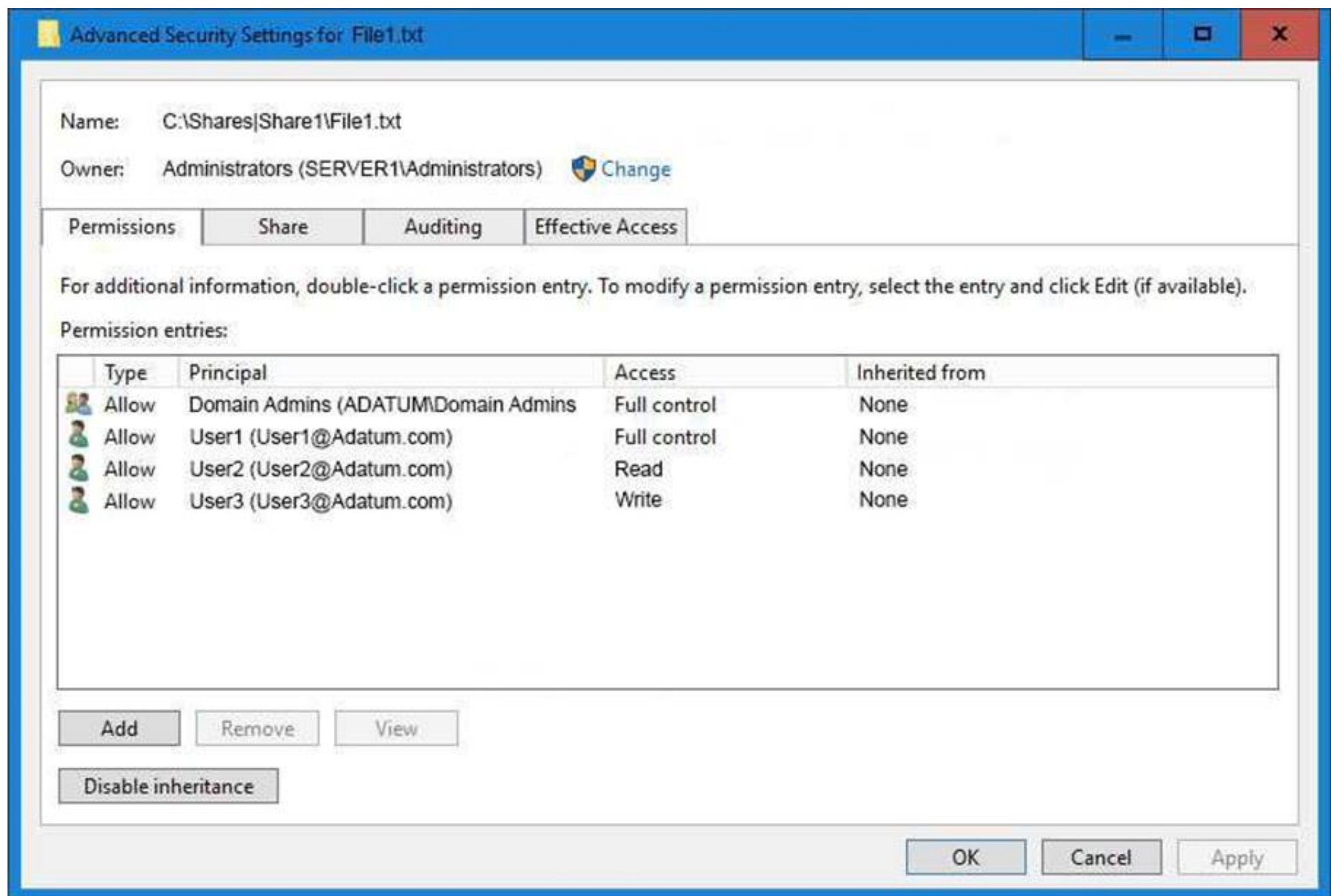
Your network contains an Active Directory domain named Adatum.com. The domain contains two servers named Server1 and Server2 that run Windows Server 2016. The domain contains three users named User1, User2, and User3. Server1 has a share named Share1 that has the following configurations.

```
PresetPathAcl      : System.Security.AccessControl.DirectorySecurity
ShareState         : Online
AvailabilityType   : NonClustered
ShareType          : FileSystemDirectory
FolderEnumerationMode : AccessBased
CachingMode        : Manual
SmbInstance        : Default
CATimeout          : 0
ConcurrentUserLimit : 0
ContinuouslyAvailable : False
CurrentUsers        : 0
Description         :
EncryptData         : False
Name               : Share1
Path               : C:\Shares\Share1
Scoped             : False
ScopeName          : *
SecurityDescriptor  : O:BAG:DUD:(A;OICI;FA;;;WD)
ShadowCopy         : False
Special            : False
Temporary          : False
Volume             : \\?\Volume{d80578cf-0000-0000-0000-501f00000000}\
PSComputerName     :
CimClass           : ROOT\Microsoft\Windows\SMB:MSFT_SmsShare
CimInstanceProperties : {AvailabilityType, CachingMode, CATimeout, ConcurrentUserLimit...}
CimSystemProperties : Microsoft.Management.Infrastructure.CimSystemProperties
```

The share permissions for Share1 are configured as shown in the Share1 exhibit. (Click the Exhibit button.)




Share1 contains a file named File1.txt. The Advanced Security Settings for File1.txt are configured as shown in the File1.txt exhibit. (Click the Exhibit button.)



Advanced Security Settings for File1.txt





Name: C:\Shares\Share1\File1.txt

Owner: Administrators (SERVER1\Administrators)  Change

Permissions | Share | Auditing | Effective Access

For additional information, double-click a permission entry. To modify a permission entry, select the entry and click Edit (if available).

Permission entries:

Type	Principal	Access	Inherited from
 Allow	Domain Admins (ADATUM\Domain Admins)	Full control	None
 Allow	User1 (User1@Adatum.com)	Full control	None
 Allow	User2 (User2@Adatum.com)	Read	None
 Allow	User3 (User3@Adatum.com)	Write	None

Add Remove View

Disable inheritance

OK Cancel Apply

For each of the following statement, select Yes if the statement is true. Otherwise, select No.

Answer Area

Statement	Yes	No
When User1 navigates to \\Server1\Share1\, the user can take ownership of File1.txt.	<input type="radio"/>	<input type="radio"/>
When User2 navigates to \\Server1\Share1\, the user will see File1.txt	<input type="radio"/>	<input type="radio"/>
When User3 navigates to \\Server1\Share1\, the user will see File1.txt	<input type="radio"/>	<input type="radio"/>

- A. Mastered
- B. Not Mastered

Answer: A

Explanation:

Answer Area

Statement	Yes	No
When User1 navigates to \\Server1\Share1\, the user can take ownership of File1.txt.	<input type="radio"/>	<input checked="" type="radio"/>
When User2 navigates to \\Server1\Share1\, the user will see File1.txt	<input checked="" type="radio"/>	<input type="radio"/>
When User3 navigates to \\Server1\Share1\, the user will see File1.txt	<input checked="" type="radio"/>	<input type="radio"/>

NEW QUESTION 126

You have a Windows container host named Server1.
On Server1, you create a container named Container1.
You need to mount C:\ContainerFiles from Server1 to Container1. What should you run?

- A. dockerd --storage-opt dm.mountopt=ContainerFiles
- B. docker run -it -v c:\ContainerFiles Container1
- C. dockerd --storage-opt dm.datadev=/c/ContainerFiles
- D. docker run -it -vc:\ContainerFiles:c:\ContainerFiles Container1

Answer: D

NEW QUESTION 129

HOTSPOT

Note: This question is part of a series of questions that use the same scenario. For your convenience, the scenario is repeated in each question. Each question presents a different goal and answer choices, but the text of the scenario is exactly the same in each question in this series.
Your network contains an Active Directory domain named contoso.com. The functional level of the forest and the domain is Windows Server 2008 R2. All servers in the domain run Windows Server 2016 Standard. The domain contains 300 client computers that run either Windows 8.1 or Windows 10.
The domain contains nine servers that are configured as shown in the following table.

Name	Configuration	Planned changes
Server1	Domain controller	None
Server2	File server	Run Failover Clustering and Storage Spaces Direct
Server3	File server	Run Failover Clustering and Storage Spaces Direct
Server4	Hyper-V host	Run shielded virtual machines
Server5	Hyper-V host	None
Server6	Member server	Run Active Directory Federation Services (AD FS)
VM1	Virtual machine hosted on Server5	None
VM2	Virtual machine hosted on Server5	None
VM3	Virtual machine hosted on Server5	None

The virtual machines are configured as follows:
Each virtual machine has one virtual network adapter.
VM1 and VM2 are part of a Network Load Balancing (NLB) cluster.
All of the servers on the network can communicate with all of the virtual machines. For VM1 and VM2, you plan to use live migration between Server4 and Server5.
You need to ensure that when the virtual machines migrate, they maintain connectivity to the network.
Which virtual switch names and connection types should you use on each server? To answer, select the appropriate options in the answer area.

Answer Area

Virtual switch connection type on Server4:

▼

External network

Internal network

Private network

Virtual switch connection type on Server5:

▼

External network

Internal network

Private network

Virtual switch name on Server4:

▼

External on Server4

Network switch

Server4

Virtual switch name on Server5:

▼

External on Server5

Network switch

Server5

- A. Mastered
- B. Not Mastered

Answer: A

Explanation:

Answer Area

Virtual switch connection type on Server4:

▼

External network

Internal network

Private network

Virtual switch connection type on Server5:

▼

External network

Internal network

Private network

Virtual switch name on Server4:

▼

External on Server4

Network switch

Server4

Virtual switch name on Server5:

▼

External on Server5

Network switch

Server5

Note: This question is part of a series of questions that present the same scenario. Each question in the series contains a unique solution that might meet the stated goals. Some question sets might have more than one correct solution, while others might not have a correct solution.

After you answer a question in this section, you will NOT be able to return to it. As a result, these questions will not appear in the review screen.

You are a server administrator at a company named Contoso, Ltd.

Contoso has a Windows Server 2016 Hyper-V environment configured as shown in the following table.

Hyper-V host name	Configuration	Virtual switch name
Host1	- Uses an Intel processor - Is a member of a SAN named SAN1	Switch1
Host2	- Uses an AMD processor - Has local storage only	Switch2
Host3	- Uses an Intel processor - Is a member of a SAN named SAN1	Switch1
Host4	- Uses an Intel processor - Has local storage only	Switch2

All of the virtual switches are of the external type.

You need to ensure that you can move virtual machines between the hosts without causing the virtual machines to disconnect from the network.

Solution: You implement live migration by using Host1 and Host3. Does this meet the goal?

A. Yes

B. No

Answer: A

NEW QUESTION 136

Note: This question is part of a series of questions that present the same scenario. Each question in the series contains a unique solution that might meet the stated goals. Some question sets might have more than one correct solution, while others might not have a correct solution.

After you answer a question in this section, you will NOT be able to return to it. As a result, these questions will not appear in the review screen.

You have a server named Server 1 that runs Windows Server 2016.

You plan to use Windows Server Backup to back up all of the data on Server 1. You create a new volume on Server 1.

You need to ensure that the new volume can be used as a backup target. The backup target must support incremental backups.

Solution: You assign a drive letter to the volume, and you format the volume by using ex FAT. Does this meet the goal?

A. Yes

B. No

Answer: B

NEW QUESTION 139

Your network contains an Active Directory domain named contoso.com. All servers run Windows

Server 2016. As a domain administrator, you log on to a server named Server2 and open Windows Power Shell. You need to establish an interactive Power Shell session to a server named Server 1- Which command should you run?

A. Enable-PSRemoting Server 1

B. Enter-PSSession -ComputerName Server

C. New-PSSession -Name Server

D. Set-PSSession Configuration -AccessMode Remote -Name Server

Answer: B

NEW QUESTION 142

HOTSPOT

You have a server named Server1 that runs Windows Server 2016.

On Server1, you have a custom image of Windows Server 2016 Standard in a file named Image1.wim. The image is mounted to C:\Folder1.

You discover corrupted files in the WinSxS folder of the mounted image.

From the Windows Server 2016 installation media, you mount an image of Windows Server 2016 Standard from Install.wim to C:\Folder2.

You need to repair the corrupted image.

Which command should you run? To answer, select the appropriate options in the answer area. NOTE: Each correct selection is worth one point.

Answer Area

Dism /Cleanup-Image /Image:

▼
C:\Folder1
C:\Folder1\image1.wim
C:\Folder2\install.wim:1
C:\Folder2\Windows

▼
/CheckIntegrity
/RestoreHealth
/ScanHealth
/StartComponentCleanup

/Source:

▼
C:\Folder1
C:\Folder1\image1.wim
C:\Folder2\install.wim:1
C:\Folder2\Windows

- A. Mastered
- B. Not Mastered

Answer: A

Explanation:

References: <https://docs.microsoft.com/en-us/windows-hardware/manufacture/desktop/repair-a-windows-image>

NEW QUESTION 145

You have a Windows Server 2016 fail over cluster named that contains four nodes named Server 1, Server2. Server3. sod Seiver4. Cluster1 hosts 40 virtual machines that are distributed evenly across the nodes.
Server 1 and Server2 are located in a data center in Madrid. Server1 and Server4 are located In a d.ita center in Barcelona.
You need lo entire that when you pause a node, the clustered virtual machines will always attempt to move automatically to another node in the same data center before attempting to move to a node In the other data center.
Which two actions should you perform?
Each correct answer present part of the solution.

- A. Run the New-ClusterFaultDomain cmdlel.
- B. Configure a file share witness for each data center.
- C. Orate on Active Directory site for cacti data center.
- D. Run the Set-Cluster FaultDomain cmdlet.
- E. Run the Add-ClusterGroup cmdlet.
- F. Change the quorum configuration of the cluster to Node Majority.

Answer: CE

NEW QUESTION 150

Your network contains three Hyper-V hosts. You add all of the hosts to a cluster.
You need to create highly available storage spaces that connect to directly attached storage on the hosts.
Which cmdlet should you use?

- A. Enable-CluslerStorageSpacesDirct
- B. Update-CluslerVirtualMachineConfiguration
- C. Add-CluslerDisk
- D. Set-Storage Pool

Answer: A

NEW QUESTION 153

Your network contains an Active Directory domain.
The domain contains two Hyper-V hosts.
You plan to perform live migrations between the hosts.
You need to ensure that the live migration traffic is authenticated by using Kerberos. What should you do first?

- A. From Server Manager, install the Host Guardian Service server role on a domain controller.

- B. From Active Directory Users and Computers, add the computer accounts for both servers to the Cryptographic Operators group.
- C. From Active Directory Users and Computers, modify the Delegation properties of the computer accounts for both servers.
- D. From Server Manager, install the Host Guardian Service server role on both servers.

Answer: C

Explanation:

If you have decided to use Kerberos to authenticate live migration traffic, configure constrained delegation before you proceed to the rest of the steps.

NEW QUESTION 158

HOTSPOT

You have a server named Server1 that runs Windows Servers 2016. Server1 has a storage array that contains multiple storage enclosures. The storage hardware supports enclosure awareness.

You need to implement Storage Spaces on Server1. Storage Spaces must remain available if two enclosures fail. The solution must minimize the number of enclosures required and must provide the fastest possible write performance.

Which configurations should you use? To answer, select the appropriate options in the answer area. NOTE: Each correct selection is worth one point.

Answer Area

Resiliency type:	<div><div></div><div>Dual parity</div><div>Single parity</div><div>Three-way mirror</div><div>Two-way mirror</div></div>
Number of enclosures:	<div><div></div><div>3</div><div>4</div><div>5</div><div>6</div></div>

- A. Mastered
- B. Not Mastered

Answer: A

Explanation:

References: <https://docs.microsoft.com/en-us/windows-server/storage/storage-spaces/storage-spaces-fault-tolerance#summary>

NEW QUESTION 160

DRAG DROP

Your network contains an Active Directory domain named contoso.com. The domain has two clusters named FC1 and FC2.

The domain contains servers that run Windows Server 2016. The Servers are configured as shown in the following table.

Server name	Processor	Memory	Cluster
Server1	Intel Xeon E3	128 GB	FC1
Server2	Intel Xeon E3	128 GB	FC1
Server3	Intel Xeon E3	256 GB	FC2
Server4	Intel Xeon E3	256 GB	FC2

Server1 hosts a highly available virtual machine named VM1.

You need to move VM1 from Server1 to Server3 by using live migration.

Which three actions should you perform in sequence? To answer, move the appropriate actions from the list of actions to the answer area and arrange them in the correct order.

Actions

Add the Virtual Machine role

Add the Hyper-V Replica Broker role to FC1 and FC2

Remove VM1 from FC1

Perform live migration from Failover Cluster Manager

Perform live migration from Hyper-V Manager

Answer Area

⏪

⏩

⏮

⏭

⏪

⏩

⏮

⏭

⏪

⏩

⏮

⏭

- A. Mastered
- B. Not Mastered

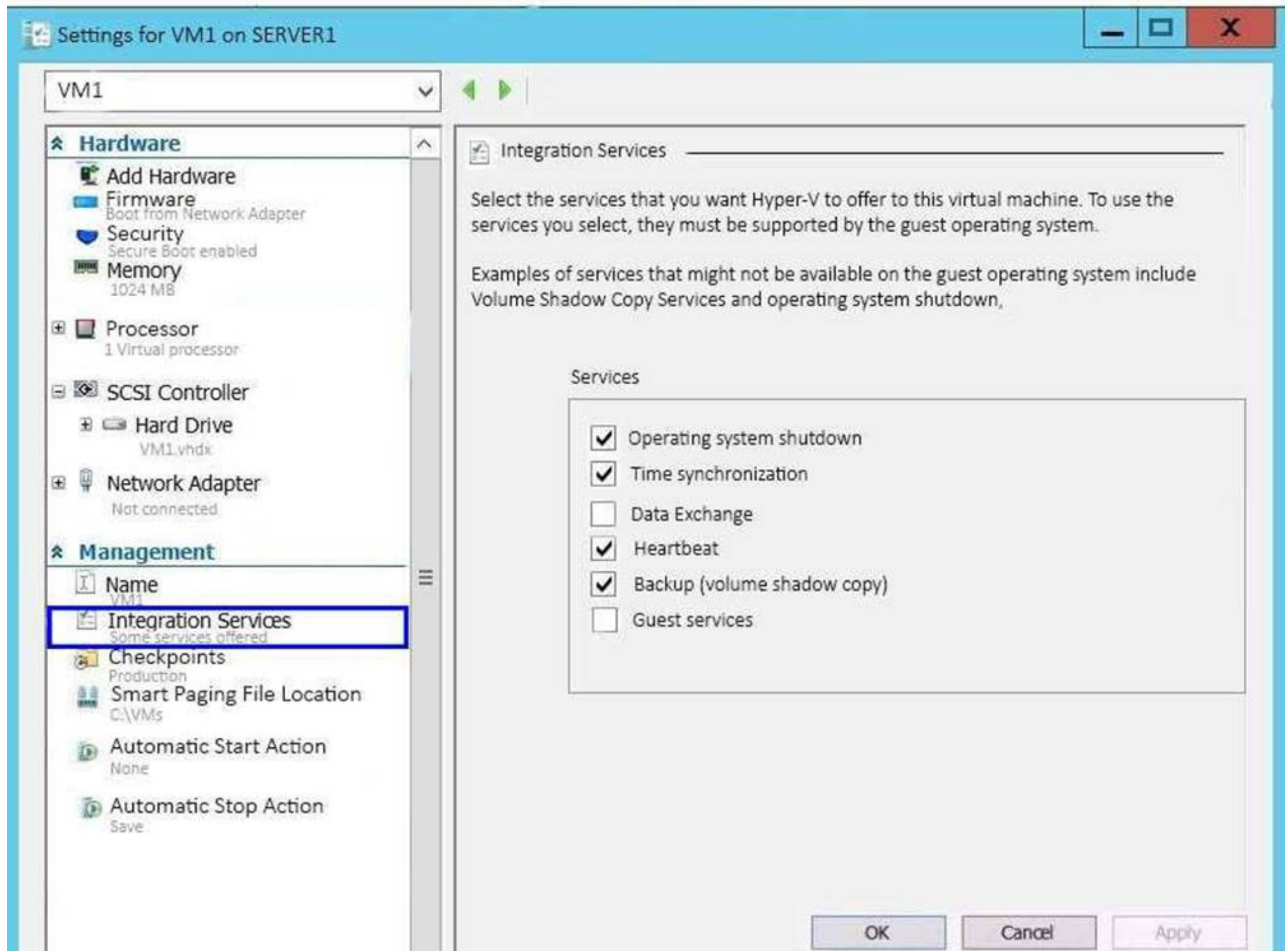
Answer: A

Explanation:

References: <http://www.checkyourlogs.net/?p=16401>

NEW QUESTION 163

Note: This question is part of a series of questions that present the same scenario. Each question in the series contains a unique solution that might meet the stated goals. Some question sets might have more than one correct solution, while others might not have a correct solution. After you answer a question in this section, you will NOT be able to return to it. As a result, these questions will not appear in the review screen. You have a Hyper-V host named Server1 that hosts a virtual machine named VM1. Server1 and VM1 run Windows Server 2016. The settings for VM1 are configured as shown in the exhibit. (Click the Exhibit button.)



You need to ensure that you can use the Copy-VMFile cmdlet on Server1 to copy files from VM1. Solution: You enable the Guest services integration service for VM1.

Does this meet the goal?

- A. Yes
- B. No

Answer: A

Explanation:

References: [https://technet.microsoft.com/en-us/library/dn798297\(v=ws.11\).aspx](https://technet.microsoft.com/en-us/library/dn798297(v=ws.11).aspx)

NEW QUESTION 164

DRAG DROP

You have a server named Server1 that runs Windows Server 2016. Server1 has the Hyper-V server role installed and hosts a virtual machine named VM1. Server1 has an NVMe storage device. Currently, the device is assigned to VM1 through a Discrete Device Assignment. You need to make the storage device available to Server1.

Which four actions should you perform in sequence? To answer, move the appropriate actions from the list of actions to the answer area and arrange them in the correct order.

Actions

Answer Area

Run the Remove-VMAssignableDevice cmdlet.

Run the Mount-VMHostAssignableDevice cmdlet.

Stop VM1.

Enable the device in Device Manager.

Disable the device in Device Manager.

- A. Mastered
- B. Not Mastered

Answer: A

Explanation:

If you want to return the device back to its original state, you will need to stop the VM and issue the following cmdlets:
Remove-VMAssignableDevice Mount-VMHostAssignableDevice
You can then re-enable the device in device manager.
References: <https://docs.microsoft.com/en-us/windows-server/virtualization/hyper-v/deploy/deploying-storage-devices-using-dda#removing-a-device-and-returning-it-to-the-host>

NEW QUESTION 166

DRAG DROP
Your network contains an Active Directory domain named contoso.com. The domain contains a server named Server1 that runs Windows Server 2016. Server1 allows inbound connectivity from all computers in the contoso.com domain. Server1 has an IP address of 192.168.0.10. Server1 hosts a Windows container named Container1. Container1 hosts a website that is accessible on port 80. You need to ensure that you can use the Docker client to manage Container1 from any computer in the domain. Which three cmdlets should you run in sequence? To answer, move the appropriate cmdlets from the list of cmdlets to the answer area and arrange them in the correct order.

Actions

Answer Area

Restart-Service docker

New-ContainerNetwork- Name nat1 – Mode NAT- SubnetPrefix 192.168.0.0/24 – GatewatAddress 192.168.0.10

Add-Content 'c:\programdata\docker\config\daemon.json' '{"hosts": [{"tcp://127.0.0.1:80", "npipe://"}]}'

Add-Content 'c:\programdata\docker\config\daemon.json' '{"hosts": [{"tcp://0.0.0.0:2375", "npipe://" }]}'

New-Item-Type File c:\programData\docker\config\daemon.json



- A. Mastered
B. Not Mastered

Answer: A

Explanation:

References:

<https://glennsarti.github.io/blog/getting-started-with-windows-containers/> <https://docs.microsoft.com/en-us/virtualization/windowscontainers/manage-containers/container-networking>

NEW QUESTION 171

Note: This question is part of a series of questions that use the same scenario. For your convenience, the scenario is repeated in each question. Each question presents a different goal and answer choices, but the text of the scenario is exactly the same in each question in this series.

A company named Contoso, Ltd. has several servers that run Windows Server 2016. Contoso has a Hyper-V environment that uses failover clustering and Windows Server Update Services (WSUS). The environment contains several Windows containers and several virtual machines.

The WSUS deployment contains one upstream server that is located on the company's perimeter network and several downstream servers located on the internal network. A firewall separates the upstream server from the downstream servers.

You plan to deploy a human resources application to a new server named HRServer5. HRServer5 contains a FAT32-formatted data volume.

The CIO of Contoso identifies the following requirements for the company's IT department:

Deploy a failover cluster to two new virtual machines.

Store all application databases by using Encrypted File System (EFS).

Ensure that each Windows container has a dedicated IP address assigned by a DHCP server.

Produce a report that lists the processor time used by all of the processes on a server named Server1 for five hours.

Encrypt all communication between the internal network and the perimeter network, including all WSUS communications.

Automatically load balance the virtual machines hosted in the Hyper-V cluster when processor utilization exceeds 70 percent.

Which networking mode should you configure for the Windows containers?

- A. 12tunnel
B. 12bridge
C. network address translation (NAT)
D. transparent

Answer: C

Explanation:

References: <https://blogs.technet.microsoft.com/virtualization/2016/05/05/windows-container-networking/>

NEW QUESTION 174

You have a server named Server1 that runs Windows Server 2016. Server1 has two network adapters that support single root I/O virtualization (SR-IOV). The network adapters are from two different vendors.

You plan to install the Hyper-V server role on Server1, and then to create a virtual machine named VM1 that runs Windows Server 2016. VM1 will use SR-IOV.

You need to ensure that VM1 can use both network adapters for load balancing and failover. What should you do?

- A. On Server1, create two virtual switches without embedded teamin
B. On VM1, create one NIC team.
C. On Server1, create one virtual switch without embedded teamin
D. On VM1, create one NIC team.

- E. On Server1, create one NIC tea
- F. On VM1, create one NIC team.
- G. On Server1, create one virtual switch that has embedded teamin
- H. On VM1, create two NIC teams.

Answer: A

NEW QUESTION 178

You have a server named Server1 that runs Windows Server 2016. Windows Defender is enabled on Server1.

Server1 runs an application named App1 that stores various types of files in Microsoft OneDrive for Business, MicrosoftOneDrive, and Microsoft SharePoint Online. App1 also interacts with several local services.

You need to prevent Windows Defender from scanning any files opened by App1. What should you do on Server1?

- A. Run the Set-ExecutionPolicy cmdlet.
- B. Run the New-AppLockerPolicy cmdlet.
- C. Modify the real-time protection settings in Windows Defender.
- D. Run the Add-MpPreference cmdlet.

Answer: D

Explanation:

References:

<https://docs.microsoft.com/en-us/windows/security/threat-protection/windows-defender-antivirus/configure-proc>

NEW QUESTION 183

.....

Relate Links

100% Pass Your 70-740 Exam with ExamBible Prep Materials

<https://www.exambible.com/70-740-exam/>

Contact us

We are proud of our high-quality customer service, which serves you around the clock 24/7.

Viste - <https://www.exambible.com/>