

98-365 Dumps

Windows Server Administration Fundamentals

<https://www.certleader.com/98-365-dumps.html>



NEW QUESTION 1

HOTSPOT

For each of the following statements, select Yes if the statement is true. Otherwise, select No. Each correct selection is worth one point.

Answer Area

	Yes	No
A 32-bit client machine can use the 64-bit version of a printer driver.	<input type="radio"/>	<input type="radio"/>
A server can have multiple driver types installed for a single printer.	<input type="radio"/>	<input type="radio"/>
The print server must be 64-bit to support 64-bit and 32-bit clients.	<input type="radio"/>	<input type="radio"/>

- A. Mastered
- B. Not Mastered

Answer: A

Explanation:

Answer Area

	Yes	No
A 32-bit client machine can use the 64-bit version of a printer driver.	<input type="radio"/>	<input checked="" type="radio"/>
A server can have multiple driver types installed for a single printer.	<input checked="" type="radio"/>	<input type="radio"/>
The print server must be 64-bit to support 64-bit and 32-bit clients.	<input checked="" type="radio"/>	<input type="radio"/>

NEW QUESTION 2

Which type of additional drivers does the Windows 7 installation phase prompt for?

- A. Video
- B. Network
- C. Use
- D. Storage

Answer: D

Explanation:

You might be prompted for the mass storage device driver. When installing Windows 7, you might see one of the following error messages:

* No drives were found. Click Load Driver to provide a mass storage driver for installation.

* Windows Setup could not configure Windows to run on this computer's hardware.

Reference: <http://windows.microsoft.com/en-us/windows7/windows-7-installation-problem-hard-drive-not-found>

NEW QUESTION 3

This question requires that you evaluate the underlined text to determine if it is correct. Active Directory user account names are not case sensitive.

Select the correct answer if the underlined text does not make the statement correct. Select 'No change is needed' if the underlined text makes the statement correct

- A. Can be from 1 to 256 characters in length
- B. Can contain numbers and letters but no special characters
- C. Must be created with a first and last name
- D. No change is needed.

Answer: D

Explanation:

Active directory user names are not case sensitive.

NEW QUESTION 4

One advantage of a SAN is that it:

- A. Can be located either inside or outside the server.
- B. Provides USB and Firewire connectivity.
- C. Consolidates storage space for servers.
- D. Encrypts all files.

Answer: C

Explanation:

A storage area network (SAN) is a dedicated network that provides access to consolidated, block level data storage.

NEW QUESTION 5

This question requires that you evaluate the underlined text to determine if it is correct.

You install a new Windows Server 2008 R2 server for your school athletic department. The installation completes without errors. However, the new server is unable to communicate with the network. After checking cable connections and network configuration, you find that no network connections are listed in the Control Panel/Network Connections applet.

You should use "Device Manager" to investigate a potential problem with the network adapter driver.

Select the correct answer if the underlined text does not make the statement correct. Select "No change is needed" if the underlined text makes the statement correct

- A. Network and Sharing Center
- B. Control Panel/Network Connections
- C. Server Manager/WMI Control
- D. No change is needed

Answer: D

Explanation:

The Device Manager is a Control Panel applet in Microsoft Windows operating systems. It allows users to view and control the hardware attached to the computer. When a piece of hardware is not working, the offending hardware is highlighted for the user to deal with.

Reference: http://en.wikipedia.org/wiki/Device_Manager

NEW QUESTION 6

You have an Active Directory infrastructure that contains one domain and seven domain controllers. How many forests can you have without creating any trusts?

- A. 1
- B. 7
- C. 8

Answer: B

Explanation:

In a Windows Server 2003 forest, you can link two disjointed Windows Server 2003 forests together to form a one-way or two-way, transitive trust relationships. A two- way, forest trust is used to form a transitive trust relationship between every domain in both forests.

NEW QUESTION 7

HOTSPOT

For each of the following statements, select Yes if the statement is true. Otherwise, select No. Each correct selection is worth one point.

Answer Area

	Yes	No
RAID 10 provides the fastest read and write performance.	<input type="radio"/>	<input type="radio"/>
By using RAID 5, you can lose up to two disks without losing data.	<input type="radio"/>	<input type="radio"/>
RAID 1 provides fault tolerance.	<input type="radio"/>	<input type="radio"/>

- A. Mastered
- B. Not Mastered

Answer: A

Explanation:

Answer Area

	Yes	No
RAID 10 provides the fastest read and write performance.	<input checked="" type="radio"/>	<input type="radio"/>
By using RAID 5, you can lose up to two disks without losing data.	<input type="radio"/>	<input checked="" type="radio"/>
RAID 1 provides fault tolerance.	<input checked="" type="radio"/>	<input type="radio"/>

NEW QUESTION 8

You need to assign permissions to access resources.
Which type of group should you use?

- A. Workgroup
- B. Security group
- C. Organizational group
- D. Distribution group

Answer: B

Explanation:

security groups control access to the Workgroup server's functionality.

NEW QUESTION 9

Which technology is designed to help teams collaborate?

- A. Microsoft SharePoint Server
- B. Microsoft System Center Operations Manager
- C. Microsoft Forefront Identity Manager
- D. Microsoft BizTalk Server

Answer: A

Explanation:

* Organizations use SharePoint to create websites. You can use it as a secure place to store, organize, share, and access information from almost any device. All you need is a web browser, such as Internet Explorer, Chrome, or Firefox.

* SharePoint Workspace A desktop program that you can use to take SharePoint site content offline and collaborate on the content with others while you are disconnected from the network. While you and other team members are offline, you can make changes to

* SharePoint content that will eventually synchronize back to the SharePoint site.

Incorrect:

not B: System Center 2012 – Operations Manager provides infrastructure monitoring that is flexible and cost-effective, helps ensure the predictable performance and availability of vital applications, and offers comprehensive monitoring for your datacenter and cloud, both private and public.

Not C: Microsoft Forefront Identity Manager 2010 R2 delivers self-service identity management for users, automates lifecycle management across heterogeneous platforms for administrators, and provides a rich policy framework for enforcing corporate security policies.

Not D: Microsoft BizTalk Server (or simply "BizTalk") enables companies to automate business processes, through the use of adapters which are tailored to communicate with different software systems used in an enterprise.

NEW QUESTION 10

You often stop by Fourth Coffee before class. The owner knows you are studying computer networking. One morning, the owner asks for your help with a file server because it is running slower than usual.

Which two tools should you use to diagnose the problem with this server? (Choose two.)

- A. Task Manager
- B. Share & Storage Management
- C. Device Manager
- D. Perfmon
- E. Profiler

Answer: AD

Explanation:

A: The Performance tab of the Task Manager could be checked. D: Perfmon is the performance monitor in Windows.

NEW QUESTION 10

This question requires that you evaluate the underlined text to determine if it is correct. The "Security" log in Event Viewer shows information regarding server reboots.

Select the correct answer if the underlined text does not make the statement correct. Select 'No change is needed' if the underlined text makes the statement correct.

- A. Application
- B. Setup
- C. System
- D. No change is needed

Answer: C

Explanation:

System logs include system events such as server reboots.

NEW QUESTION 15

This question requires that you evaluate the underlined text to determine if it is correct.

Active Directory "Distribution groups" can only be assigned permissions to resources within the same domain but can have members from other domains.

Select the correct answer if the underlined text does not make the statement correct. Select 'No change is needed' if the underlined text makes the statement correct.

- A. Global groups
- B. Universal groups
- C. Domain local groups
- D. No change is needed

Answer: C

Explanation:

Distributions groups are used as recipients of email messages.

Domain local groups:

* Member permissions can be assigned only within the same domain as the parent domain local group

* Group can include as member: Accounts from any domain Global groups from any domain

Universal groups from any domain

Reference: Group scope

<https://technet.microsoft.com/en-us/library/cc755692%28v=ws.10%29.aspx>

Domain local groups but only from the same domain as the parent domain local group

NEW QUESTION 19

You need to grant a set of users permissions to a specific folder. Where should you place the user accounts?

- A. Domain root
- B. Security group
- C. Shared folder
- D. Organizational Unit

Answer: :D

Explanation:

Place the users in an OU. Assign permissions to the OU for the specific folder.

NEW QUESTION 23

Which provides centralized management of users and computers?

- A. Active Directory
- B. Windows Internet Name Service (WINS)
- C. Dynamic Host Configuration Protocol (DHCP)
- D. Remote Access

Answer: A

Explanation:

Active Directory (AD) is a directory service implemented by Microsoft for Windows domain networks. It is included in most Windows Server operating systems. An AD domain controller authenticates and authorizes all users and computers in a Windows domain type network—assigning and enforcing security policies for all computers and installing or updating software.

NEW QUESTION 24

Which technology provides both e-mail and database services?

- A. Windows Server Enterprise Edition
- B. Microsoft Office Communications Server
- C. Windows Small Business Server
- D. Microsoft Project Server

Answer: C

Explanation:

Windows Small Business Server is available in Essentials, Standard, and Premium editions. Essentials is a scaled down version for 1-25 users, both the other editions are based on the Windows Server codebase and include Microsoft Exchange Server mail server, Internet Information Services (IIS) web server, Windows SharePoint Services for collaboration, Microsoft Office Outlook 2003 email client (not included in 2008), Routing and Remote Access Service (RRAS), Windows Server Update Services for update management across the network, and a Fax server. Up to SBS 2003, the Premium edition also included Microsoft SQL Server, Microsoft Internet Security and Acceleration Server and Microsoft Office FrontPage 2003.

NEW QUESTION 26

The purpose of the Information Technology Infrastructure Library is to provide a:

- A. Set of standards for networking protocols.
- B. Set of best practices for managing IT services.
- C. Downloadable library of hardware drivers.
- D. Technical library of Windows infrastructure services.

Answer: B

Explanation:

The Information Technology Infrastructure Library (ITIL) is a set of practices for IT service management (ITSM) that focuses on aligning IT services with the needs of business.

NEW QUESTION 27

The manager at the coffee house where you work asks for advice on adding storage to the store's server to perform backups.

The additional storage must meet the following requirements:

- ? Hold at least 600 GB
- ? Be reasonably priced
- ? Be reasonably fast

Which solution should you recommend?

- A. USB hard drive
- B. USB flash drive
- C. SCSI tape backup system
- D. External SCSI hard drive

Answer: C

NEW QUESTION 29

Which RAID level can consist of two disks and provides redundancy?

- A. RAID 0
- B. RAID 1
- C. RAID 5
- D. RAID 10

Answer: B

NEW QUESTION 33

A domain controller that is designated to perform a set of specialized domain controller tasks is commonly referred to as a/an:

- A. Windows Internet Name Service (WINS) server
- B. Operations Master
- C. Organizational Unit
- D. Primary domain controller

Answer: B

Explanation:

Operations Master Roles

The five operations master roles are assigned automatically when the first domain controller in a given domain is created.

NEW QUESTION 34

By default, which group can create and link Group Policy Objects?

- A. Authenticated Users
- B. Domain Users
- C. Domain Administrators
- D. Local Administrators

Answer: :C

Explanation:

The Domain Administrators are the only people who can create GPOs by default.

NEW QUESTION 39

What is required to create a volume mount point?

- A. A dynamic disk
- B. RAID 1 implementation
- C. An NTFS file system volume or partition
- D. Extended volumes

Answer: C

Explanation:

A volume mount point can be placed in any empty folder of the host NTFS volume.

NEW QUESTION 44

Which technology is used to create and manage relational databases?

- A. Microsoft Exchange Server
- B. Microsoft Commerce Server
- C. Microsoft Groove Server
- D. Microsoft SQL Server

Answer: D

Explanation:

SQL Server databases are relational.

NEW QUESTION 45

This question requires that you evaluate the underlined text to determine if it is correct.

"Microsoft App-V" can make applications available to end user computers without having to install the applications on those computers.

Select the correct answer if the underlined text does not make the statement correct. Select "No change is needed" if the underlined text makes the statement

correct.

- A. Microsoft Hyper-V
- B. DirectAccess
- C. Windows Deployment Services
- D. No change is needed.

Answer: D

Explanation:

Microsoft Application Virtualization (MS App-V) platform allows applications to be deployed ("streamed") in real-time to any client from a virtual application server. It removes the need for traditional local installation of the applications.
Reference: http://en.wikipedia.org/wiki/Microsoft_App-V

NEW QUESTION 50

This question requires that you evaluate the underlined text to determine if it is correct. Settings from the "Local" Group Policy Object are processed last during logon.
Select the correct answer if the underlined text does not make the statement correct. Select 'No change is needed' if the underlined text makes the statement correct.

- A. Site
- B. Organizational Unit
- C. Domain
- D. No change is needed.

Answer: B

Explanation:

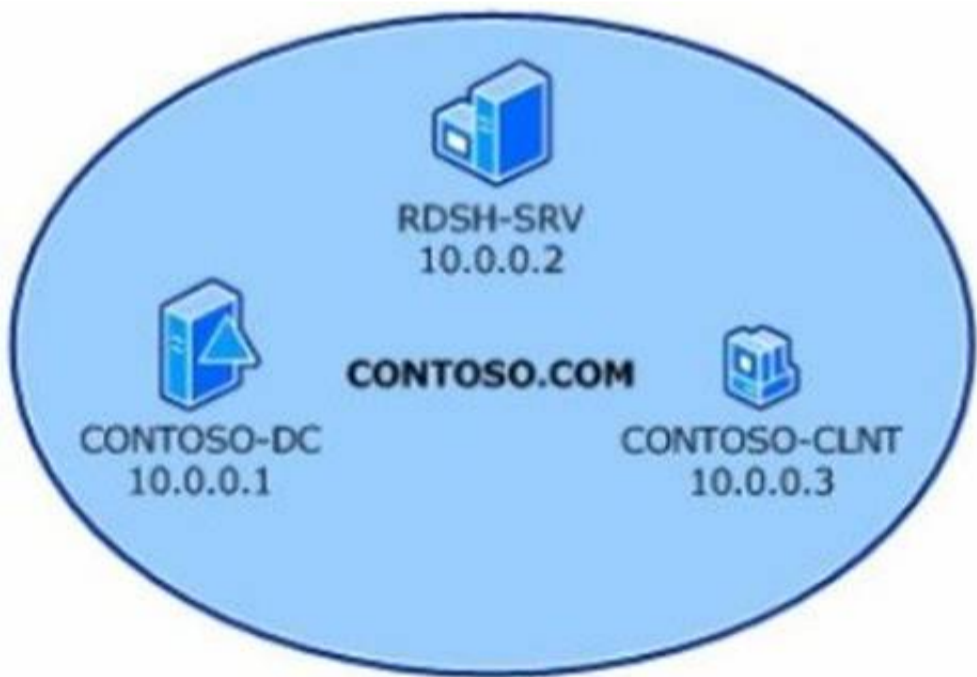
Group Policy settings are processed in the following order:
? Local Group Policy object
2. Site
3. Domain
4. Organizational Unit
Reference: Group Policy processing and precedence <https://technet.microsoft.com/en-us/library/cc785665%28v=ws.10%29.aspx>

NEW QUESTION 52

HOTSPOT

You create a user account named user1 and an Active Directory Domain Services group named RDGroup in Active Directory Domain Services. The lab environment is shown in the following image:

Computer name	Operating system	Applications and services
RDSH-SRV	Windows Server 2008 R2	RD Session Host
CONTOSO-DC	Windows Server 2008 R2	Active Directory Domain Services, Domain Name System (DNS)
CONTOSO-CLNT	Windows® 7	Remote Desktop Connection



Use the drop-down menus to select the answer choice that completes each statement. Each correct selection is worth one point.

Answer Area

To enable only remote desktop access to the RDSH-SRV server for RDGroup, add RDGroup to the [answer choice] group on the host.

Remote Desktop Users
Users
Administrators

To enable restricted access to the RDSH-SRV server for user1, add user1 to the [answer choice] group in Active Directory.

RDGroup
Users
Administrators

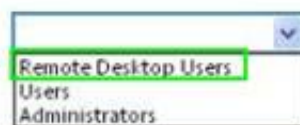
- A. Mastered
- B. Not Mastered

Answer: A

Explanation:

Answer Area

To enable only remote desktop access to the RDSH-SRV server for RDGroup, add RDGroup to the **[answer choice]** group on the host.



To enable restricted access to the RDSH-SRV server for user1, add user1 to the **[answer choice]** group in Active Directory.



NEW QUESTION 56

Which should you use to manage the working environments of users and computers in an Active Directory infrastructure?

- A. Active Directory Domains and Trusts
- B. Group Policy Objects
- C. Builtin containers
- D. Global security groups

Answer: B

Explanation:

A Group Policy Object (GPO) is a collection of settings that define what a system will look like and how it will behave for a defined group of users or computers.

NEW QUESTION 59

You turn on a computer. What happens first?

- A. The operating system is loaded.
- B. The boot sector is accessed.
- C. The BIOS is loaded.
- D. The Master Boot Record (MBR) is accessed.

Answer: C

NEW QUESTION 62

Which file storage system can be used on a Windows Server?

- A. NFS
- B. NTFS
- C. EXT3
- D. FAT16

Answer: B

NEW QUESTION 64

You need to control which Microsoft Office updates are automatically deployed to client computers. Which tool should you use?

- A. Microsoft Office SharePoint Services (MOSS)
- B. Windows Server Update Services (WSUS)
- C. Windows Update
- D. Microsoft Office Update

Answer: B

Explanation:

Windows Server Update Services (WSUS) enables information technology administrators to deploy the latest Microsoft product updates to computers that are running the Windows operating system. By using WSUS, administrators can fully manage the distribution of updates that are released through Microsoft Update to computers in their network.

NEW QUESTION 69

Which task is executed during the Power-On Self Test (POST)?

- A. The amount of system RAM is detected.
- B. The Master Boot Record is created.
- C. The operating system is initialized.
- D. Disk file systems are detected.

Answer: A

Explanation:

The principal duties of the main BIOS during POST are as follows:
verify CPU registers
verify the integrity of the BIOS code itself
verify some basic components like DMA, timer, interrupt controller

(A) find, size, and verify system main memory initialize BIOS
pass control to other specialized BIOSes (if and when required) identify, organize, and select which devices are available for booting

NEW QUESTION 72

You need to install storage device drivers for a Windows boot partition. When should you do this?

- A. After you have started Windows for the first time
- B. Before creation of the RAID array
- C. During the post-boot phase
- D. During the installation phase

Answer: D

Explanation:

Example:
During the first phase of the Windows XP installation, Setup displays the following message at the bottom of the screen:
Press F6 if you have to install a third-party SCSI or RAID driver.
Press F6 and then follow the instructions to install a mass-storage device driver from your Original Equipment Manufacturer (OEM).

NEW QUESTION 77

HOTSPOT

For each of the following statements, select Yes if the statement is true. Otherwise, select No. Each correct selection is worth one point.

Answer Area	Yes	No
To use a managed printer being shared by a Windows server, add the printer as a network printer.	<input type="radio"/>	<input type="radio"/>
To use a printer that is directly connected to the network, you must add the printer as a network printer.	<input type="radio"/>	<input type="radio"/>
To use a network-attached printer as a local printer, create a TCP/IP port and map the printer to the port.	<input type="radio"/>	<input type="radio"/>

- A. Mastered
- B. Not Mastered

Answer: A

Explanation:

Answer Area	Yes	No
To use a managed printer being shared by a Windows server, add the printer as a network printer.	<input checked="" type="radio"/>	<input type="radio"/>
To use a printer that is directly connected to the network, you must add the printer as a network printer.	<input type="radio"/>	<input checked="" type="radio"/>
To use a network-attached printer as a local printer, create a TCP/IP port and map the printer to the port.	<input checked="" type="radio"/>	<input type="radio"/>

NEW QUESTION 79

Which technology uses digital certificates for secure communications over the Internet?

- A. Fully Qualified Domain Name (FQDN)
- B. Internet Service Manager (ISM)
- C. Secure Sockets Layer (SSL)
- D. File Transfer Protocol (FTP)

Answer: C

NEW QUESTION 83

Which two files are executed so that a Windows 2008 R2 server boots into the operating system? (Choose two.)

- A. winload.exe
- B. ntldr.exe
- C. bootmgr.exe
- D. boot.ini

Answer: AC

Explanation:

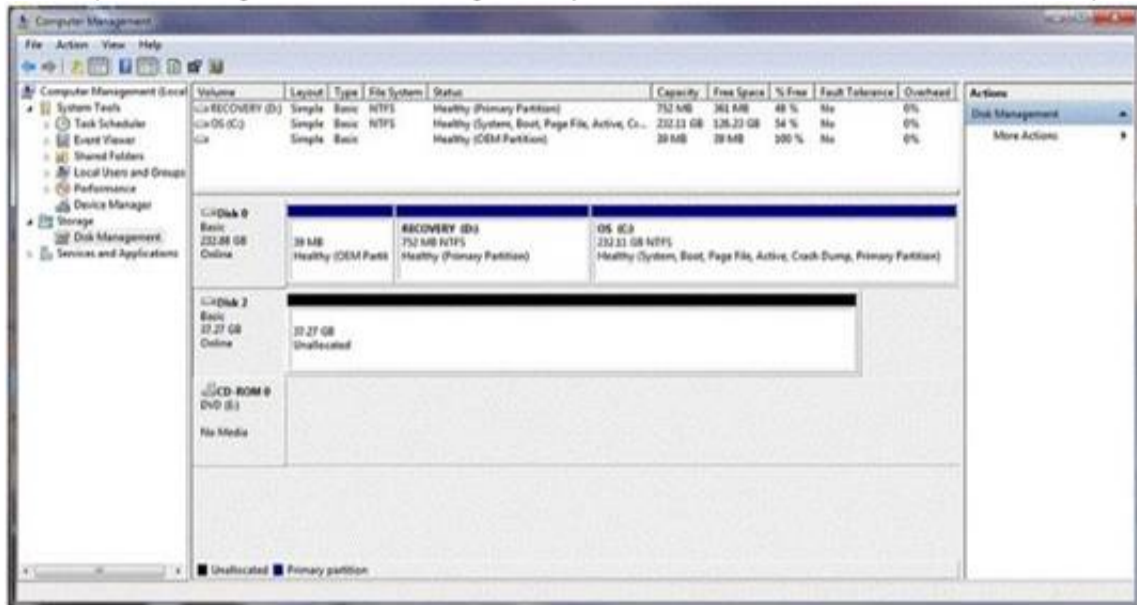
A: The Windows Boot Manager invokes winload.exe—the operating system boot loader—to load the operating system kernel executive (ntoskrnl.exe) and core

device drivers. In that respect, winload.exe is functionally equivalent to the operating system loader function of NTLDR in prior versions of Windows NT. C: Windows Vista and later operating systems replaced the NTLDR with the Windows Boot Manager (BOOTMGR). The BOOTMGR file is located in the 100 MB system partition automatically created during the Window 7 and Server 2008 R2 installation. In Windows Vista and Server 2008 the file is located in the System Partition. Once the computer is started the boot sector loads the BOOTMGR which in turn looks for an active partition.
Incorrect:
Not B, not D: In legacy operating systems the boot sector (boot strap loader) loads the NTLDR that would then look for the BOOT.INI.
Reference: http://en.wikipedia.org/wiki/Windows_Vista_startup_process

NEW QUESTION 85

HOTSPOT

You buy a new USB hard drive for your server. After connecting the drive, you need to make this drive available to Windows. In Computer Management Disk Management you see the drive, but it is not visible in Explorer's Computer view, as shown in the following image:



Use the drop-down menus to select the answer choice that completes each statement. Each correct selection is worth one point.

Answer Area

You should create a [answer choice] volume on Disk 2.

▼

simple

spanned

striped

You should format Disk 2 as [answer choice] to support compression.

▼

exFAT

FAT32

NTFS

- A. Mastered
- B. Not Mastered

Answer: A

Explanation:

Answer Area

You should create a [answer choice] volume on Disk 2.

▼

simple

spanned

striped

You should format Disk 2 as [answer choice] to support compression.

▼

exFAT

FAT32

NTFS

NEW QUESTION 86

Which should you use to monitor server performance and resource utilization?

- A. Memory
- B. Counters
- C. Boot logs
- D. RAM

Answer: B

Explanation:

Performance Counters, Purpose
Counters are used to provide information as to how well the operating system or an application, service, or driver is performing. The counter data can help determine system bottlenecks and fine-tune system and application performance. The operating system, network, and devices provide counter data that an application can consume to provide users with a graphical view of how well the system is performing.

NEW QUESTION 89

This question requires that you evaluate the underlined text to determine if it is correct.

The default security permission assigned to Everyone when a new share is created is "change".

Select the correct answer if the underlined text does not make the statement correct. Select "No change is needed" if the underlined text makes the statement correct.

- A. Read
- B. Full control
- C. None
- D. No change is needed.

Answer: A

NEW QUESTION 93

You maintain backup schedules for a Windows Server 2008 R2 server. Some users store vital information on their local hard drives.

You need to perform nightly backups that include this data. Which built-in process should you use?

- A. Agent backup
- B. Folder redirection
- C. Local backup schedules
- D. System state data backup

Answer: B
Explanation: Use folder redirection to store the vital information on a network share instead. Then it will be easy to backup this data.

Explanation:

Note: Folder Redirection lets administrators redirect the path of a folder to a new location. The location can be a folder on the local computer or a directory on a network file share. Users can work with documents on a server as if the documents were based on a local drive.

Reference: Folder Redirection Overview <https://technet.microsoft.com/en-us/library/cc732275.aspx>

NEW QUESTION 98

HOTSPOT

For each of the following statements, select Yes if the statement is true. Otherwise, select No. Each correct selection is worth one point.

Answer Area

	Yes	No
The local Administrator account on a Windows Server 2008 R2 server can be renamed.	<input type="radio"/>	<input type="radio"/>
The local Administrator account on a Windows Server 2008 R2 server can be deleted.	<input type="radio"/>	<input type="radio"/>
The local Administrator account on a Windows Server 2008 R2 server is disabled by default.	<input type="radio"/>	<input type="radio"/>

- A. Mastered
- B. Not Mastered

Answer: A

Explanation:

Answer Area

	Yes	No
The local Administrator account on a Windows Server 2008 R2 server can be renamed.	<input checked="" type="radio"/>	<input type="radio"/>
The local Administrator account on a Windows Server 2008 R2 server can be deleted.	<input type="radio"/>	<input checked="" type="radio"/>
The local Administrator account on a Windows Server 2008 R2 server is disabled by default.	<input type="radio"/>	<input checked="" type="radio"/>

NEW QUESTION 99

You need to automate the installation of Windows Server 2008 on several servers. What should you use?

- A. unattendinstall.exe
- B. Microsoft Software Installer (MSI)
- C. Windows Installer Service
- D. Windows Deployment Services (WDS)

Answer: D

Explanation:

Windows Deployment Services is the updated and redesigned version of Remote Installation Services (RIS). Windows Deployment Services enables you to deploy Windows operating systems over the network, which means that you do not have to install each operating system directly from a CD or DVD.

NEW QUESTION 101

What is the default port for HTTPS?

- A. 21
- B. 80
- C. 135
- D. 443

Answer: D

Explanation:

43, TCP, Hypertext Transfer Protocol over TLS/SSL (HTTPS)

NEW QUESTION 106

You configure Volume Shadow Copy Service (VSS) to save previous versions of a shared folder. By default, the copies of shared folders are stored in:

- A. A Network Attached Storage (NAS) device.
- B. A Distributed File System (DFS) share.
- C. A failover cluster.
- D. A local volume.

Answer: D

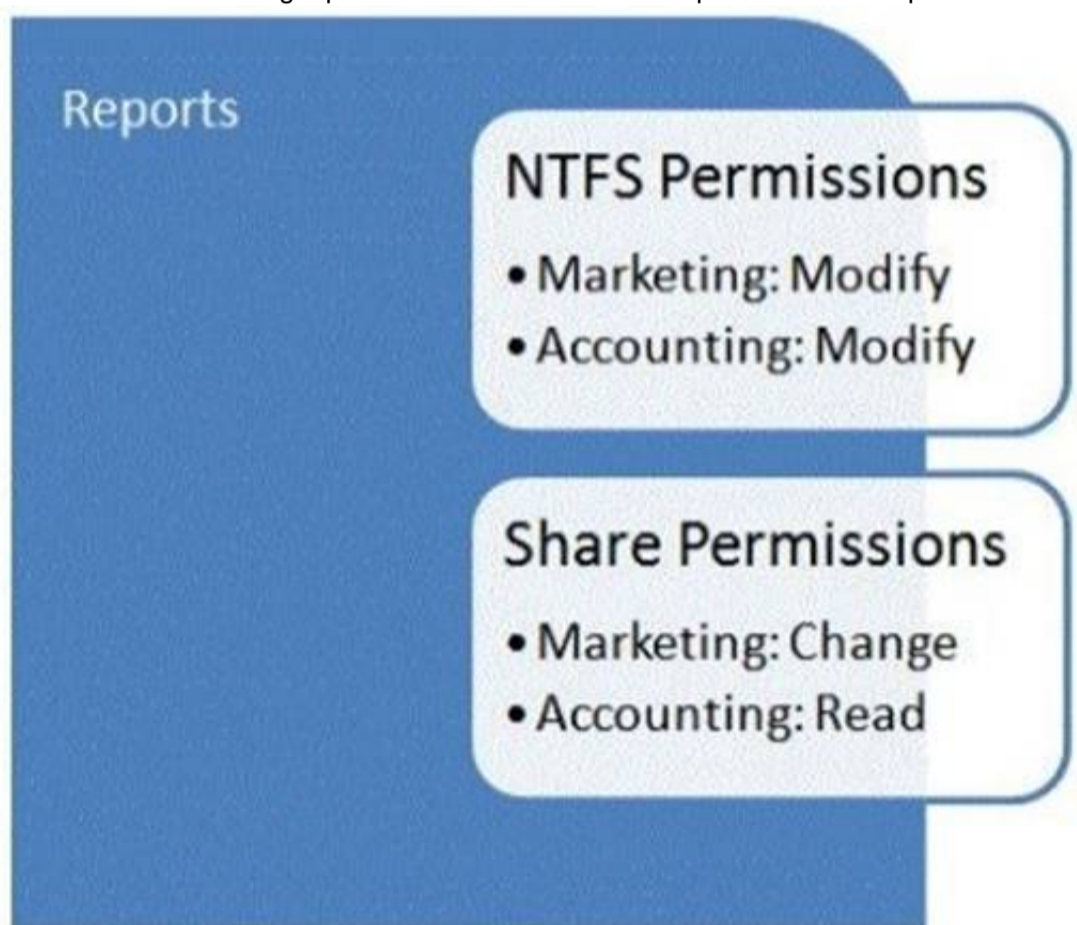
Explanation:

Shadow Copy technology requires the file system to be NTFS to be able to create and store shadow copies. Shadow Copies can be created on local and external (removable or network) volumes by any Windows component that uses this technology, such as when creating a scheduled Windows Backup or automatic System Restore point.

NEW QUESTION 110

HOTSPOT

You are troubleshooting a permissions issue with the Reports share. The permissions are shown in the following image:



The groups connect to the share.

Use the drop-down menus to select the answer choice that answers each question. Each correct selection is worth one point.

Answer Area

Accounting

	▼
Read	
Modify	
Full Control	

Marketing

	▼
Read	
Modify	
Full Control	

- A. Mastered
- B. Not Mastered

Answer: A

Explanation:

Answer Area



NEW QUESTION 115

This question requires that you evaluate the underlined text to determine if it is correct.

"Windows Deployment Services (WPS)" allows you to automate the installation of Windows Server 2008 on several servers.

Select the correct answer if the underlined text does not make the statement correct. Select 'No change is needed' if the underlined text makes the statement correct.

- A. Microsoft Software Installer (MSI)
- B. Unattendinstall.exe
- C. Windows Installer Service
- D. No change is needed

Answer: D

Explanation:

Windows Deployment Services (WDS) enables you to deploy Windows operating systems over the network, which means that you do not have to install each operating system directly from a CD or DVD.

Benefits of Windows Deployment Services include:

- * Supports deploying images for mixed environments including Windows 7 and Windows Server 2008 R2 through Windows 8.1 and Windows Server 2012 R2.
- * Allows network-based installation of Windows operating systems, which reduces the complexity and cost when compared to manual installations.

Reference: Windows Deployment Services Overview <https://technet.microsoft.com/en-us/library/hh831764.aspx>

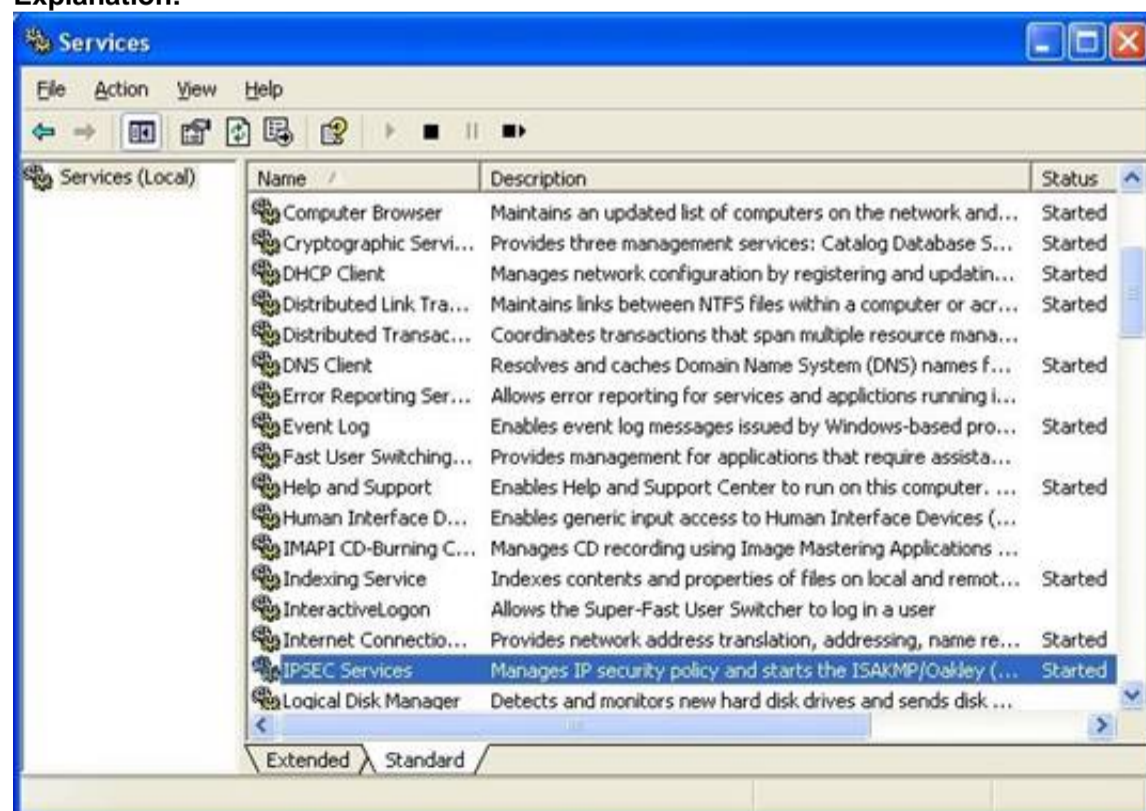
NEW QUESTION 120

You are using the Services Management Console. Which term is used to describe a service that is running?

- A. Started
- B. Activated
- C. Engaged
- D. Working

Answer: A

Explanation:



<http://www.uccs.cam.ac.uk/docs/leaflets/g53/vpn1.jpg>

NEW QUESTION 122

.....

Thank You for Trying Our Product

* 100% Pass or Money Back

All our products come with a 90-day Money Back Guarantee.

* One year free update

You can enjoy free update one year. 24x7 online support.

* Trusted by Millions

We currently serve more than 30,000,000 customers.

* Shop Securely

All transactions are protected by VeriSign!

100% Pass Your 98-365 Exam with Our Prep Materials Via below:

<https://www.certleader.com/98-365-dumps.html>