



# Microsoft

## Exam Questions 98-349

Windows Operating System Fundamentals

## About ExamBible

### *Your Partner of IT Exam*

## Found in 1998

ExamBible is a company specialized on providing high quality IT exam practice study materials, especially Cisco CCNA, CCDA, CCNP, CCIE, Checkpoint CCSE, CompTIA A+, Network+ certification practice exams and so on. We guarantee that the candidates will not only pass any IT exam at the first attempt but also get profound understanding about the certificates they have got. There are so many alike companies in this industry, however, ExamBible has its unique advantages that other companies could not achieve.

## Our Advances

### \* 99.9% Uptime

All examinations will be up to date.

### \* 24/7 Quality Support

We will provide service round the clock.

### \* 100% Pass Rate

Our guarantee that you will pass the exam.

### \* Unique Gurantee

If you do not pass the exam at the first time, we will not only arrange FULL REFUND for you, but also provide you another exam of your claim, ABSOLUTELY FREE!

**NEW QUESTION 1**

- (Exam Topic 1)

Which Windows feature will allow you to run automated scripts on a remote computer?

- A. Windows Remote Management
- B. Remote Access Services
- C. Remote Desktop Connection
- D. Virtual Private Network

**Answer:** A

**NEW QUESTION 2**

- (Exam Topic 1)

Which program will run on a 64-bit version of the Windows operating system?

- A. A 32-bit laser printer driver
- B. A 32-bit video card driver
- C. A 32-bit version of Microsoft Office
- D. A 32-bit wireless network adapter driver

**Answer:** C

**NEW QUESTION 3**

- (Exam Topic 1)

Which feature allows you to manually configure a hardware device?

- A. Windows Task Manager
- B. Ease of Access
- C. Device Manager
- D. Registry Editor

**Answer:** C

**NEW QUESTION 4**

- (Exam Topic 1)

Which two versions of Windows 7 support the Encrypting File System (EFS) functionality? (Each correct answer presents a complete solution. Chose two.)

- A. Ultimate Edition
- B. Home Premium Edition
- C. Professional Edition
- D. Starter Edition

**Answer:** AC

**Explanation:**

EFS is not fully supported on Windows 7 Starter, Windows 7 Home Basic, and Windows 7 Home Premium.

**NEW QUESTION 5**

- (Exam Topic 1)

Which describes the purpose of Power Saver mode for a portable computer?

- A. To lock the computer when it is idle
- B. To prevent unauthorized programs from consuming resources
- C. To protect the display from burned-in images
- D. To shut down idle devices to conserve battery charge

**Answer:** D

**NEW QUESTION 6**

- (Exam Topic 1)

You need to configure a folder that allows everyone in your group to view and modify files. Which item in the Share With menu should you use?

- A. Specific People
- B. Nobody
- C. Homegroup (Read/Write)
- D. Homegroup (Read)

**Answer:** C

**NEW QUESTION 7**

- (Exam Topic 1)

You have a legacy application that must be used in Windows 7.

Which feature should you use if the legacy application runs poorly or fails to run?

- A. Programs in Control Panel
- B. Windows Installer
- C. Windows Easy Transfer
- D. Program Compatibility Assistant

**Answer:** D

#### NEW QUESTION 8

- (Exam Topic 1)

A Windows 7 library:

- A. Organizes user files from disparate locations.
- B. Makes copies of user files in a central location.
- C. Encrypts files by using the Encrypting File System (EFS).
- D. Restores files from system backup.

**Answer:** A

#### NEW QUESTION 9

- (Exam Topic 1)

Windows hides some files by default to:

- A. Avoid accidental modification or deletion of system files.
- B. Protect the confidentiality of the contents of files.
- C. Improve access to system files.
- D. Save disk space.

**Answer:** A

#### NEW QUESTION 10

- (Exam Topic 1)

Which online service allows you to store and retrieve files over the Internet?

- A. Windows Future Storage
- B. Windows Live SkyDrive
- C. Windows Media Center
- D. Windows Storage Server

**Answer:** B

#### NEW QUESTION 10

- (Exam Topic 1)

Your computer is running slower than usual.

Where should you look to find out which applications are consuming the maximum number of resources?

- A. Administrative Tools
- B. Device Manager
- C. System Tray
- D. Task Manager
- E. Network and Sharing Center

**Answer:** D

#### NEW QUESTION 14

- (Exam Topic 1)

Which feature allows you to create a new virtual application?

- A. Application Virtualization Sequencer
- B. Windows Installer
- C. Remote Desktop Connection
- D. Windows Virtual PC

**Answer:** A

#### NEW QUESTION 15

- (Exam Topic 1)

PowerShell is used to:

- A. Monitor user keystrokes.
- B. Repair damaged hard disk drive sectors.
- C. Automate a routine task.
- D. Extend the life of the battery.

**Answer:** C

#### NEW QUESTION 18

- (Exam Topic 1)

Which feature allows you to transfer information from your computer to your mobile phone?

- A. Windows Mobility Center
- B. Device Manager
- C. Sync Center
- D. Windows Easy Transfer

**Answer:** B

**Explanation:**

Ref:

<http://windows.microsoft.com/en-us/windows7/sync-music-pictures-contacts-and-calendars-with-a-mobile-devic>

#### NEW QUESTION 20

- (Exam Topic 1)

You need to prevent specific users from logging on to a computer from 24:00 hours to 07:00 hours. Which Control Panel feature should you use?

- A. User Account Control
- B. Administrative Tools
- C. Clock, Language, and Region
- D. Parental Controls

**Answer:** D

**Explanation:**

Ref: <http://windows.microsoft.com/en-us/windows/control-when-children-use-computer#1TC=windows-7>

#### NEW QUESTION 22

- (Exam Topic 1)

Which Windows feature allows you to roll back your computer's settings to a previous date and time?

- A. System Restore
- B. Safe Mode
- C. Disk Cloning
- D. Disk Mirroring

**Answer:** A

#### NEW QUESTION 25

- (Exam Topic 1)

You need to be able to recover an encrypted file even if you lose the key. What should you do?

- A. Use the Encrypting File System (EFS).
- B. Use System Restore to create a system restore point.
- C. Use Bitlocker encryption.
- D. Create a recovery certificate and store it on a portable device.

**Answer:** D

#### NEW QUESTION 30

- (Exam Topic 1)

Which two editions of Windows 7 support Windows XP mode? (Each correct answer presents a complete solution. Choose two.)

- A. Home Premium
- B. Starter
- C. Ultimate
- D. Professional

**Answer:** CD

**Explanation:**

Using Windows XP Mode, you can run programs that were designed for Windows XP on computers running Windows 7 Professional, Enterprise, or Ultimate editions.

#### NEW QUESTION 31

- (Exam Topic 1)

A Windows service is a:

- A. Program or process that runs in the background and does not require user intervention.
- B. Hardware driver that provides support to a specific device.
- C. Program or process that runs in the foreground.
- D. Hardware driver that provides support to the operating system.

**Answer:** A

#### NEW QUESTION 36

- (Exam Topic 1)

You attempt to install Windows 7 on your personal computer. You receive an error message stating that your product key is not valid. What is causing the error?

- A. You accidentally entered the product key in lower case.
- B. Your product key does not match the version of Windows that you are installing.
- C. The product key you are trying to use has expired.
- D. You reformatted your hard disk drive before you installed Windows.

**Answer:** B

#### NEW QUESTION 40

- (Exam Topic 1)

You need a script to run at a specific time. Which Windows component should you use?

- A. Task Manager
- B. Device Manager
- C. Task Scheduler
- D. Event Viewer

**Answer:** C

#### NEW QUESTION 42

- (Exam Topic 1)

You want to upgrade your computer from Windows Vista to Windows 7.

What is the minimum processor speed required to run a 64-bit version of Windows 7?

- A. 800 MHz
- B. 1.0 GHz
- C. 1.2 GHz
- D. 1.8 GHz

**Answer:** B

#### NEW QUESTION 45

- (Exam Topic 1)

The purpose of a Public folder is to:

- A. share files with only one person on a network.
- B. share files with everyone on a network.
- C. share files with a selected group of people on a network.
- D. back up files to a location on a network.

**Answer:** B

#### NEW QUESTION 50

- (Exam Topic 1)

Where should you view the list of services on your Windows 7 computer?

- A. From the Windows Task Manager dialog box
- B. From the Windows Registry
- C. From the System Properties dialog box
- D. From the Windows Action Center

**Answer:** A

#### NEW QUESTION 54

- (Exam Topic 1)

Which Windows feature allows you to run a program on your computer that is installed on another computer?

- A. Windows Virtual PC
- B. Microsoft Application Virtualization
- C. Remote Desktop Connection
- D. System Center Service Manager

**Answer:** B

#### NEW QUESTION 57

- (Exam Topic 1)

Which Windows feature allows you to request that someone else control your computer from their computer?

- A. Remote Assistance
- B. Action Center
- C. Sync Center
- D. Connect Now

**Answer:**

A

#### NEW QUESTION 62

- (Exam Topic 1)

You plan to upgrade your computer to Windows 7.

Which tool should you use to find out whether your current applications will run on Windows 7?

- A. Application Compatibility Toolkit
- B. Windows Anytime Upgrade
- C. Windows Update
- D. Windows Service Pack

**Answer:** A

#### NEW QUESTION 66

- (Exam Topic 1)

Which two steps should you perform to install a local printer that connects directly to your personal computer? (Each correct answer presents part of the solution. Choose two.)

- A. Connect the printer to an available USB port and allow Windows to locate and install the appropriate driver.
- B. Connect the Ethernet cable from your printer to the RJ45 connector on the personal computer and follow the Windows prompts.
- C. Follow the manufacturer's directions by using the installation CD provided along with the printer.
- D. Use the Add Network Printer feature from Control Panel.

**Answer:** AD

#### NEW QUESTION 68

- (Exam Topic 1)

Which Windows feature should you use to find patches for Internet Explorer?

- A. Sync Center
- B. System Information
- C. Internet Properties
- D. Windows Update

**Answer:** D

#### NEW QUESTION 71

- (Exam Topic 1)

You need to find out whether your computer has received the most recent critical Windows updates. What should you do?

- A. From the Computer Management console, view Services and Applications.
- B. From Windows Update, select View Update History.
- C. From Administration Tools, view Event Logs.
- D. From Control Panel, use Programs.

**Answer:** B

#### NEW QUESTION 76

- (Exam Topic 1)

What is the maximum size of a virtual hard disk?

- A. 2 terabytes
- B. 5 terabytes
- C. 16 terabytes
- D. 500GB

**Answer:** A

#### NEW QUESTION 80

- (Exam Topic 1)

Which feature should you use to restrict certain actions only to an administrator account on a Windows 7 computer?

- A. Windows Experience Index
- B. User Account Control
- C. BitLocker
- D. Computer Management

**Answer:** B

#### NEW QUESTION 82

- (Exam Topic 1)

Which is a potential risk when redirecting a USB storage device during a Remote Desktop session?

- A. Access can be slower.
- B. The device can stop working.

- C. The session can stop responding.
- D. Data can be lost.

**Answer:** D

#### NEW QUESTION 87

- (Exam Topic 1)

You need to install a new webcam on your personal computer.

What should you do? (To answer, move the four appropriate actions from the list of actions to the answer area and arrange them in the correct order.)

Configure the COM ports.

Configure the Display properties.

Plug the webcam into a USB port.

Run the setup program provided by the manufacturer.

Use Windows Update to configure the updated driver.

Allow Windows to locate and add the new hardware.

- A. Mastered
- B. Not Mastered

**Answer:** A

#### Explanation:

Box 1: Plug the webcam into a USB port.

Box 2: Allow Windows to locate and add the new hardware Box 3: Use Windows Update to configure the update driver. Box 4: Run the setup program provided by the manufacturer. Note:

- \* When you connect an external webcam to your computer for the first time, Windows will recognize it and automatically install a driver for it.
- \* After installation is complete, check the information that came with your webcam to see if you need to install any additional software.

#### NEW QUESTION 91

- (Exam Topic 1)

You have several active jobs in the print queue. You need to view the print queue.

What should you do?

- A. Use the Printer icon on the system tray.
- B. Use the Windows Task Manager.
- C. Click the Print button in the application that is printing.
- D. Use the Computer Management console.

**Answer:** A

#### NEW QUESTION 92

- (Exam Topic 1)

You want to upgrade your Windows operating system to Windows 7.

Which feature should you use to find out whether the existing devices will work after the upgrade?

- A. System Manager
- B. Windows 7 Compatibility Center
- C. Device Manager
- D. Windows Update

**Answer:** B

#### NEW QUESTION 94

- (Exam Topic 1)

Which Windows feature allows you to manually control another Windows computer?

- A. Remote Control Monitor
- B. Remote Desktop Connection
- C. Remote Power Management



D. Remote Procedure Call

**Answer:** B

#### NEW QUESTION 97

- (Exam Topic 1)

Which feature allows you to pause the printing of all documents waiting to print on a specific printer?

- A. The Print Setup page
- B. The printer's Properties page
- C. The printer's shortcut menu
- D. The Computer Management console

**Answer:** C

#### NEW QUESTION 98

- (Exam Topic 2)

Which two versions of Windows 7 support the Windows Anytime Upgrade functionality? (Choose two.)

- A. Professional
- B. Ultimate
- C. Enterprise
- D. Starter

**Answer:** AD

#### NEW QUESTION 100

- (Exam Topic 2)

You want to use your home computer to access your work computer.

Which two actions should you perform before connecting the computers? (Each correct answer presents part of the solution. Choose two.)

- A. Obtain the IP address of the work computer.
- B. Obtain the IP address of the home computer.
- C. Obtain the MAC address of the home computer.
- D. Allow Remote Desktop on the home computer.
- E. Allow Remote Desktop on the work computer.
- F. Obtain the MAC address of the work computer.

**Answer:** DE

#### NEW QUESTION 103

- (Exam Topic 2)

In which section of Control Panel will you find the shortcut to manage the services on your Windows 10 computer?

- A. The Programs group under Programs and Features
- B. The Computer Management group under Administrative Tools
- C. The Hardware and Sound group under Devices and Printers
- D. The Network and Internet group under Networks and Sharing Center

**Answer:** B

#### NEW QUESTION 107

- (Exam Topic 2)

Your roommate has a laptop with Windows 7. Updates install automatically.

Several months ago, your roommate accidentally hid several Windows updates. Now your roommate wants to install them.

You need to unhide these updates in Windows Update so the computer can install them. What should you do?

- A. Unhide the updates from the Change Settings window.
- B. Restore hidden updates from the View Update History window.
- C. Check for new updates and include hidden updates.
- D. Unhide the updates from the Restore Hidden Updates window.

**Answer:** B

#### NEW QUESTION 108

- (Exam Topic 2)

In which location of Control Panel will you find the shortcut to manage the services on your Windows 7 computer?

- A. The Hardware and Sound group under Devices and Printers
- B. The Programs group under Programs and Features
- C. The System and Security group under Administrative Tools
- D. The Network and Internet group under Network and Sharing Center

**Answer:** C

#### NEW QUESTION 111

- (Exam Topic 2)

You want to enable or disable the programs that automatically start when Windows starts. Which Windows feature should you use?

- A. System Configuration Utility
- B. Reliability and Performance Monitor
- C. Performance Information and Tools
- D. Computer Management Console

**Answer:** D

#### NEW QUESTION 115

- (Exam Topic 2)

How can you create a connection to a network share without having to type its network address each time you need to connect?

- A. Add the computer to the shared workgroup.
- B. Add a Network Location.
- C. Map a network drive.
- D. Create a HomeGroup.

**Answer:** C

#### NEW QUESTION 120

- (Exam Topic 2)

Which task can be accomplished by a standard user, regardless of the system security settings?

- A. Installing a program
- B. Changing an account name or type
- C. Changing their own password
- D. Adding a driver for new hardware

**Answer:** D

#### NEW QUESTION 122

- (Exam Topic 2)

This question requires that you evaluate the underlined text to determine if it is correct. Public folders are located in the My Documents directory.

Select the correct answer if the underlined text does not make the statement correct. Select "No change is needed" if the underlined text makes the statement correct.

- A. Documents Library
- B. Windows Di rectory
- C. Downloads Directory
- D. No change is needed
- E. User Directory

**Answer:** E

#### NEW QUESTION 124

- (Exam Topic 2)

You want to configure Windows to periodically and automatically check for the most recent driver for your video card Which Windows feature should you use?

- A. Windows Update
- B. Device Manager
- C. Windows Installer
- D. Programs and Features

**Answer:** A

#### NEW QUESTION 128

- (Exam Topic 2)

You need to secure the contents of your entire hard disk drive even if an unauthorized user steals your computer.

Which method should you use?

- A. Rights Management Services
- B. File-level share permissions
- C. Password-protection
- D. BitLocker encryption

**Answer:** D

#### NEW QUESTION 129

- (Exam Topic 2)

You are an intern for Tailspin Toys and are creating a slideshow that shows pictures of certain new products that your company is working on. You are accessing the network using a Windows 7 laptop, and the pictures are located on several different network shares.

You need to be able to perform a rich content search on all of the network shares at the same time. What should you do?

- A. Enable file and printer sharing on the laptop.
- B. Copy all of the pictures to a folder on your laptop and search that folder.

- C. Add the network shares to your Pictures Librar
- D. Then perform a search on your Pictures Library.
- E. Access the network shares via the Network link in Windows 7 Explore
- F. Then search each share individually.

**Answer:** C

#### NEW QUESTION 133

- (Exam Topic 2)

What are three functions of Windows 7 Upgrade Advisor? (Choose three.)

- A. Determines if your computer is capable of running Windows 7
- B. Obtains any drivers necessary to perform a Windows 7 upgrade
- C. Gives you the option to run an installation wizard
- D. Determines if there are any compatibility issues
- E. Determines which Windows 7 editions work on your computer
- F. Helps with the installation of a new Windows 7 system

**Answer:** ADE

#### NEW QUESTION 137

- (Exam Topic 2)

Which two versions of Windows 7 support the Encrypting File System (EFS) functionality? (Each correct answer presents a complete solution. Choose two.)

- A. Professional Edition
- B. Ultimate Edition
- C. Home Premium Edition
- D. Starter Edition

**Answer:** BD

#### NEW QUESTION 139

- (Exam Topic 2)

Which Windows feature allows you to confirm that a program should run with elevated permissions?

- A. Parental Controls
- B. Group Policy
- C. Device Manager
- D. User Account Control

**Answer:** D

#### Explanation:

References:<http://www.dummies.com/computers/operating-systems/windows-7/how-to-run-a-program-withelevpermissions/>

#### NEW QUESTION 143

- (Exam Topic 2)

For each of the following statements, select Yes if the statement is true. Otherwise, select No. Each correct selection is worth one point.

#### Answer Area

	Yes	No
NTFS and FAT32 both support a file size of over 4 GB.	<input type="radio"/>	<input type="radio"/>
NTFS and FAT32 can both use permissions and encryption.	<input type="radio"/>	<input type="radio"/>
NTFS and FAT32 can both be used as the format for Windows 7.	<input type="radio"/>	<input type="radio"/>

- A. Mastered
- B. Not Mastered

**Answer:** A

#### Explanation:

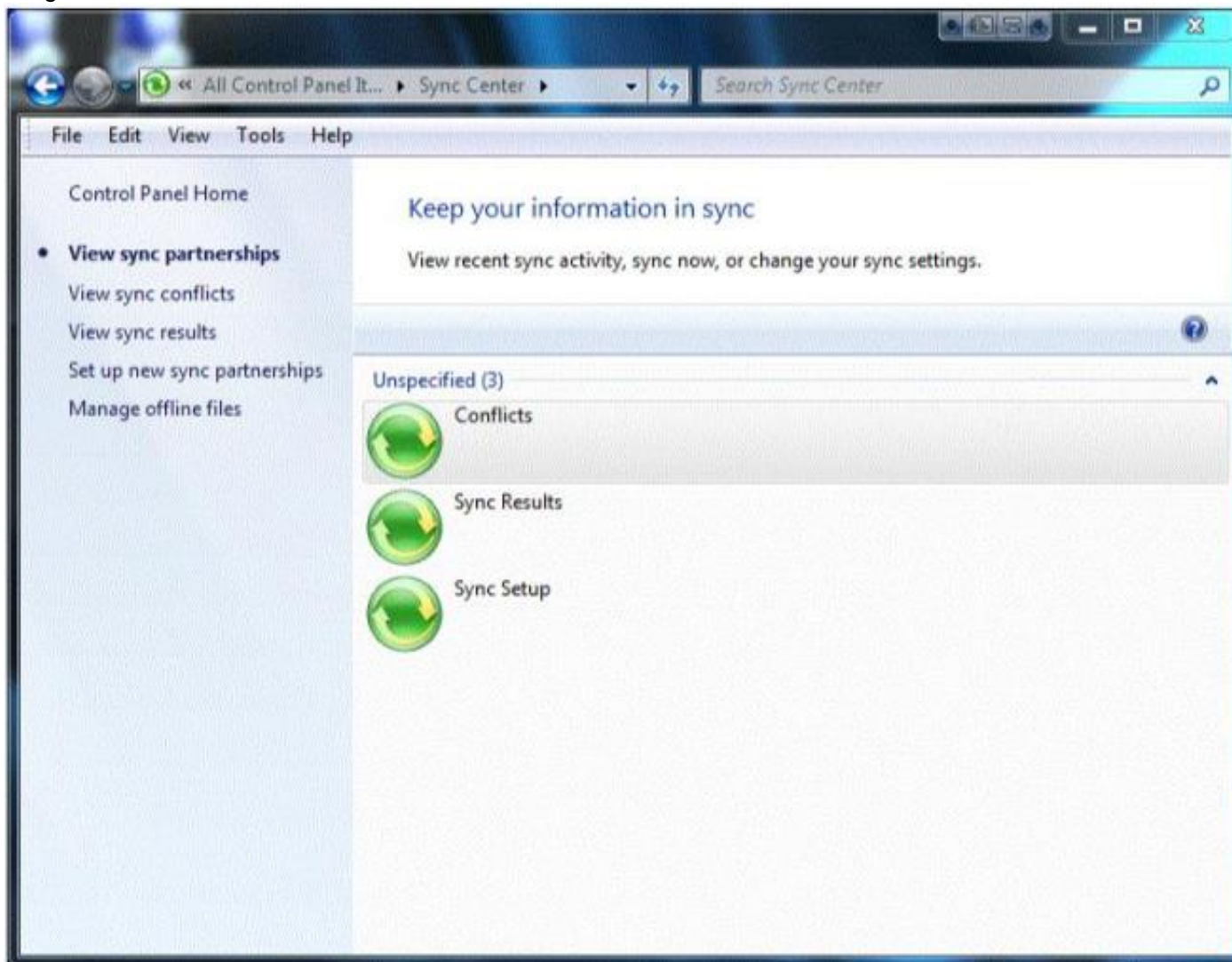
Answer Area

	Yes	No
NTFS and FAT32 both support a file size of over 4 GB.	<input type="radio"/>	<input checked="" type="radio"/>
NTFS and FAT32 can both use permissions and encryption.	<input type="radio"/>	<input checked="" type="radio"/>
NTFS and FAT32 can both be used as the format for Windows 7.	<input checked="" type="radio"/>	<input type="radio"/>

**NEW QUESTION 145**

- (Exam Topic 2)

You are a teaching assistant for a Basic Networking class. Periodically, you update class assignments in a Microsoft Excel spreadsheet stored on a network drive. You need to allow students who have laptops to always have a current copy of the assignments spreadsheet. You access Control Panel as shown in the following image:



Use the drop-down menus to select the answer choice that completes each statement. Each correct selection is worth one point.

First, you should [answer choice]

Next, you should [answer choice]

First, you should [answer choice]

set up new sync partnerships.  
view sync conflicts.  
enable offline files.

Next, you should [answer choice]

view sync results.  
set up new sync partnerships.  
view sync conflicts.

- A. Mastered
- B. Not Mastered



Answer: A

Explanation:

First, you should [answer choice]

set up new sync partnerships.  
view sync conflicts.  
enable offline files.

Next, you should [answer choice]

view sync results.  
set up new sync partnerships.  
view sync conflicts.

#### NEW QUESTION 148

- (Exam Topic 2)

For each of the following statements, select Yes if the statement is true. Otherwise, select No. Each correct selection is worth one point.

Answer Area

	Yes	No
A Windows 7 library can display files from various locations on your computer, files from various locations across several computers on the same network, and files from various Internet locations.	<input type="radio"/>	<input type="radio"/>
When a location is added to an existing Windows 7 library, the contents of the added location are automatically copied to the library.	<input type="radio"/>	<input type="radio"/>
A Windows 7 library can include folders located on a CD or DVD.	<input type="radio"/>	<input type="radio"/>

- A. Mastered  
B. Not Mastered

Answer: A

Explanation:

Answer Area

	Yes	No
A Windows 7 library can display files from various locations on your computer, files from various locations across several computers on the same network, and files from various Internet locations.	<input type="radio"/>	<input checked="" type="radio"/>
When a location is added to an existing Windows 7 library, the contents of the added location are automatically copied to the library.	<input type="radio"/>	<input checked="" type="radio"/>
A Windows 7 library can include folders located on a CD or DVD.	<input type="radio"/>	<input checked="" type="radio"/>

#### NEW QUESTION 153

- (Exam Topic 2)

Which three methods can be used to unlock files on a BitLocker-protected drive? (Each correct answer presents a complete solution. Choose three.)

- A. Automatically unlocking by logging in as the authorized user  
B. Decompressing the files  
C. Using a Smartcard and a PIN  
D. Copying the files into another folder  
E. Unhiding the files  
F. Using a password

Answer: BCF

#### NEW QUESTION 155

- (Exam Topic 2)

Your roommate, Tanya, has a Windows 7 computer. Tanya leaves her computer running while she is on a month-long vacation. When Tanya returns, she discovers that updates have not been automatically updated on her computer. What are two ways to ensure that the latest scheduled updates install on Tanya's computer? (Choose two.)

- A. Run Windows Update files from the hard drive.

- B. Restore hidden updates in Windows.
- C. Run Windows Update manually.
- D. Turn on automatic updates in Windows.

**Answer:** CD

#### NEW QUESTION 156

- (Exam Topic 2)

Which Windows 7 edition is NOT available through retail and requires special Microsoft licensing?

- A. Windows 7 Ultimate
- B. Windows 7 Professional
- C. Windows 7 Premium
- D. Windows 7 Enterprise

**Answer:** D

#### NEW QUESTION 159

- (Exam Topic 2)

You attach a second Plug and Play monitor to your computer. You need to configure the computer to use both monitors. What should you do?

- A. Configure the USB port.
- B. Use Control Panel to modify settings in the Change display settings dialog box.
- C. Use Control Panel to modify settings in Administrative Tools.
- D. Access Device Manager and select Update Driver Software.

**Answer:** B

#### NEW QUESTION 162

- (Exam Topic 2)

For each of the following statements, select Yes if the statement is true. Otherwise, select No. Each correct selection is worth one point.

##### Answer Area

	Yes	No
NTFS and FAT32 both support a file size of over 4 GB.	<input type="radio"/>	<input type="radio"/>
NTFS and FAT32 can both use permissions and encryption.	<input type="radio"/>	<input type="radio"/>
NTFS and FAT32 can both be used as the format for Windows 7.	<input type="radio"/>	<input type="radio"/>

- A. Mastered
- B. Not Mastered

**Answer:** A

**Explanation:**

##### Answer Area

	Yes	No
NTFS and FAT32 both support a file size of over 4 GB.	<input type="radio"/>	<input checked="" type="radio"/>
NTFS and FAT32 can both use permissions and encryption.	<input type="radio"/>	<input checked="" type="radio"/>
NTFS and FAT32 can both be used as the format for Windows 7.	<input checked="" type="radio"/>	<input type="radio"/>

#### NEW QUESTION 165

- (Exam Topic 2)

For each of the following statements, select Yes if the statement is true. Otherwise, select No. Each correct selection is worth one point.

#### Answer Area

	Yes	No
BitLocker is required for encrypting files.	<input type="radio"/>	<input type="radio"/>
An encrypted file can be permanently unencrypted.	<input type="radio"/>	<input type="radio"/>
Windows 7 Professional supports BitLocker.	<input type="radio"/>	<input type="radio"/>

- A. Mastered  
B. Not Mastered

**Answer:** A

#### Explanation:

#### Answer Area

	Yes	No
BitLocker is required for encrypting files.	<input type="radio"/>	<input checked="" type="radio"/>
An encrypted file can be permanently unencrypted.	<input checked="" type="radio"/>	<input type="radio"/>
Windows 7 Professional supports BitLocker.	<input type="radio"/>	<input checked="" type="radio"/>

#### NEW QUESTION 169

- (Exam Topic 2)

Microsoft Management Console has snap-ins that are used to manage:

- A. Contacts, calendars, and other data in the cloud.  
B. Hardware, software, and network components on a computer.  
C. Restore points for recovery.  
D. IP addresses on a peer-to-peer network.

**Answer:** B

#### NEW QUESTION 171

- (Exam Topic 2)

You turn on your computer. You receive the following message: "System Disk Not Found." Which Windows feature should you use to restore your computer?

- A. Automated System Recovery  
B. Last Known Good Configuration  
C. Check Disk (Chkdsk)  
D. Safe Mode

**Answer:** C

#### NEW QUESTION 176

- (Exam Topic 2)

Which three of these may be included in a service pack? (Choose three.)

- A. A remote servicing of the operating system  
B. A reinstallation of the operating system  
C. All previously released important and recommended Windows Updates  
D. New functionality  
E. Fixes for security issues

**Answer:** CDE

#### NEW QUESTION 179

- (Exam Topic 2)

Instructions: For each of the following statements, select Yes if the statement is true. Otherwise, select No. NOTE: Each correct selection is worth one point.

### Answer Area

	Yes	No
Launch Action Center from the System Tray to troubleshoot the system problems.	<input type="radio"/>	<input type="radio"/>
Use the System option in the Control Panel System and Security area to defragment.	<input type="radio"/>	<input type="radio"/>
Use the Folder Options selection in the Control Panel Appearance and personalization area to have file extensions appear in Windows Explorer.	<input type="radio"/>	<input type="radio"/>

- A. Mastered  
B. Not Mastered

Answer: A

Explanation:

### Answer Area

	Yes	No
Launch Action Center from the System Tray to troubleshoot the system problems.	<input checked="" type="radio"/>	<input type="radio"/>
Use the System option in the Control Panel System and Security area to defragment.	<input checked="" type="radio"/>	<input type="radio"/>
Use the Folder Options selection in the Control Panel Appearance and personalization area to have file extensions appear in Windows Explorer.	<input checked="" type="radio"/>	<input type="radio"/>

#### NEW QUESTION 181

- (Exam Topic 2)

For each of the following statements, select Yes if the statement is true. Otherwise, select No, Each correct selection is worth one point.

### Answer Area

	Yes	No
Only an administrator can install a plug and play device.	<input type="radio"/>	<input type="radio"/>
If a plug and play device driver is placed in the driver store, non-administrative accounts can install the device.	<input type="radio"/>	<input type="radio"/>
A network printer installs automatically on Windows.	<input type="radio"/>	<input type="radio"/>

- A. Mastered  
B. Not Mastered

Answer: A

Explanation:



Answer Area

	Yes	No
Only an administrator can install a plug and play device.	<input type="radio"/>	<input checked="" type="radio"/>
If a plug and play device driver is placed in the driver store, non-administrative accounts can install the device.	<input checked="" type="radio"/>	<input type="radio"/>
A network printer installs automatically on Windows.	<input type="radio"/>	<input checked="" type="radio"/>

NEW QUESTION 183

- (Exam Topic 2)  
Which folder permission setting will allow users to view and change but not delete files?

- A. Full control
- B. Modify
- C. Read and Execute
- D. Read and Write

Answer: B

NEW QUESTION 188

- (Exam Topic 2)  
Your aunt uses her new Windows 10 laptop to read articles. However, she finds that reading for long periods strains her eyes. You want to adjust the text on the screen to make it easier for your aunt to read for long periods without experiencing eye strain. Which option should you select?

- A. Custom Scaling
- B. Screen Resolution
- C. Clear Type
- D. Change Text Size of Menus

Answer: B

NEW QUESTION 193

- (Exam Topic 2)  
This question requires that you evaluate the underlined text to determine if it is correct. To change a file system from FAT32 to NTFS, you should run the fdisk command at the command prompt. Select the correct answer if the underlined text does not make the statement correct. Select "No change is needed" if the underlined text makes the statement correct.

- A. convert
- B. diskpart
- C. change
- D. No change is needed.

Answer: A

NEW QUESTION 195

- (Exam Topic 2)  
A classmate upgraded her laptop from Windows 8.1 to Windows 10. She wants more information about customizing the Start Menu. Instructions: For each of the following statements, select Yes if the statement is true? NOTE: Each correct selection is worth one point.

	Yes	No
The Windows 10 Start Menu can be made larger or smaller by dragging the edges of the menu.	<input type="radio"/>	<input type="radio"/>
Pressing the Windows logo key + G creates a new group on the Windows 10 Start Menu.	<input type="radio"/>	<input type="radio"/>
Selecting a group name in the Windows 10 Start Menu allows you to change its name.	<input type="radio"/>	<input type="radio"/>

- A. Mastered
- B. Not Mastered

**Answer:** A

**Explanation:**

The Windows 10 Start Menu can be made larger or smaller by dragging the edges of the menu.

Pressing the Windows logo key + G creates a new group on the Windows 10 Start Menu.

Selecting a group name in the Windows 10 Start Menu allows you to change its name.

Yes	No
<input checked="" type="radio"/>	<input type="radio"/>
<input type="radio"/>	<input checked="" type="radio"/>
<input type="radio"/>	<input checked="" type="radio"/>

#### NEW QUESTION 196

- (Exam Topic 2)

You are an IT intern for Contoso, Ltd., which has five regional offices, all networked separately. Glen works in the marketing department and has a Windows 7 Professional laptop computer. He has access to numerous network printers at each regional office. He also routinely brings his computer home and prints to his home printer. In total, he has 20 printers in his list of printers, and he is frustrated that he has to change printers for each location. What should you do to help Glen?

- A. Instruct Glen that he must set the default printer when he visits each location for the first time.
- B. Under Devices and Printers, select a printer
- C. Set the Manage default printers option to Change my default printer when I change networks.
- D. Upgrade Glen's laptop to Windows 7 Enterprise to enable location-aware printing.
- E. Under Devices and Printers, right-click the default printer and select the Set as default printer option.

**Answer:** B

#### NEW QUESTION 198

- (Exam Topic 2)

The Disk Cleanup tool:

- A. Allows free space by deleting temporary files from the hard disk drive.
- B. Rearranges the files on the hard disk to speed up performance.
- C. Moves files so that they are logically stored on the hard disk drive.
- D. Looks the surface of the disk for errors.

**Answer:** A

#### NEW QUESTION 201

- (Exam Topic 2)

Your roommate has a Windows 8.1 32-bit laptop and wants to upgrade it to Windows 10 64-bit. What should you tell her about such upgrade?

- A. You need to upgrade the existing operating system, preserving the files, applications, and settings.
- B. You need to perform a new installation
- C. Files, applications, and settings will be deleted.
- D. You cannot upgrade Windows 8.1 32-bit to Windows 10 64-bit.
- E. You need to upgrade to Windows 8.1 64-bit and then upgrade to Windows 10 64-bit.

**Answer:** B

**Explanation:**

References:<http://www.intowindows.com/upgrade-to-windows-10-64-bit-from-windows-78-1-32/>

#### NEW QUESTION 202

- (Exam Topic 2)

This QUESTION NO: requires that you evaluate the underlined text to determine if it is correct.

You can set Windows to automatically install updates for other Microsoft products through Windows Update. Instructions: Review the underlined text. If it makes the statement correct, select "No change is needed." If the statement is incorrect, select the answer choice that makes the statement correct.

- A. No change is needed.
- B. Critical updates only
- C. Third-party updates
- D. Optional updates only

**Answer:** A

#### NEW QUESTION 207

- (Exam Topic 2)

You have an internship at a company that wants you to help deploy Windows 7 to a dozen computers. The company uses the Microsoft Deployment Toolkit instead of System Center Configuration Manager. Which three migration methods are possible? (Choose three.)

- A. LTI

- B. HTTP
- C. USB
- D. UDI
- E. ZTI

Answer: BCD

NEW QUESTION 209

- (Exam Topic 2)

You are preparing to install Windows 7 on a new computer. You need to enable BitLocker for encryption. What is required in order to enable BitLocker?

- A. FAT32 system drive
- B. Smart card
- C. NTFS system drive
- D. Trusted Platform Module (TPM)

Answer: C

NEW QUESTION 211

- (Exam Topic 2)

This question requires that you evaluate the underlined text to determine if it is correct.

You need to install Windows 7 on a computer using a USB drive. You need to use a ZIP to create that drive. Select the correct answer if the underlined text does not make the statement correct. Select "No change is needed" if the underlined text makes the statement correct.

- A. An ISO
- B. A PXE
- C. A ZTI
- D. No change is needed

Answer: A

NEW QUESTION 213

- (Exam Topic 2)

Instructions: For each of the following statements, select Yes if the statement is true. Otherwise, select No. NOTE: Each correct selection is worth one point.

	Yes	No
The Hyper-V role can be installed on Windows 10 Home.	<input type="radio"/>	<input type="radio"/>
Hyper-V virtual machines can only run Microsoft operating systems.	<input type="radio"/>	<input type="radio"/>
A private, virtual network can be created among virtual machines.	<input type="radio"/>	<input type="radio"/>

- A. Mastered
- B. Not Mastered

Answer: A

Explanation:

References: <https://docs.microsoft.com/en-us/virtualization/hyper-v-on-windows/quick-start/enable-hyper-v> [https://docs.microsoft.com/en-us/windows-server/virtualization/hyper-v/Supported-Linux-and-FreeBSD-virtual for-Hyper-V-on-Windows](https://docs.microsoft.com/en-us/windows-server/virtualization/hyper-v/Supported-Linux-and-FreeBSD-virtual-for-Hyper-V-on-Windows)  
<https://docs.microsoft.com/en-us/virtualization/hyper-v-on-windows/quick-start/connect-to-network>

NEW QUESTION 218

- (Exam Topic 2)

Which is the preferred file system for Windows computers?

- A. NTFS file system
- B. FAT file system
- C. FAT32 file system
- D. CDFS

Answer: A

**NEW QUESTION 223**

- (Exam Topic 2)

For each of the following statements, select Yes if the statement is true. Otherwise, select No. Each correct selection is worth one point.

**Answer Area**

	Yes	No
Restore deleted data files by using the System Restore Wizard.	<input type="radio"/>	<input type="radio"/>
Restore registry settings by using the System Restore Wizard.	<input type="radio"/>	<input type="radio"/>
Restore data files from a system image backup.	<input type="radio"/>	<input type="radio"/>

- A. Mastered
- B. Not Mastered

**Answer:** A

**Explanation:**

**Answer Area**

	Yes	No
Restore deleted data files by using the System Restore Wizard.	<input type="radio"/>	<input checked="" type="radio"/>
Restore registry settings by using the System Restore Wizard.	<input checked="" type="radio"/>	<input type="radio"/>
Restore data files from a system image backup.	<input checked="" type="radio"/>	<input type="radio"/>

**NEW QUESTION 225**

- (Exam Topic 2)

Last time you turned on your computer, Windows started correctly. Now Windows starts but fails before the login prompt. What is the first step you should try to troubleshoot this problem?

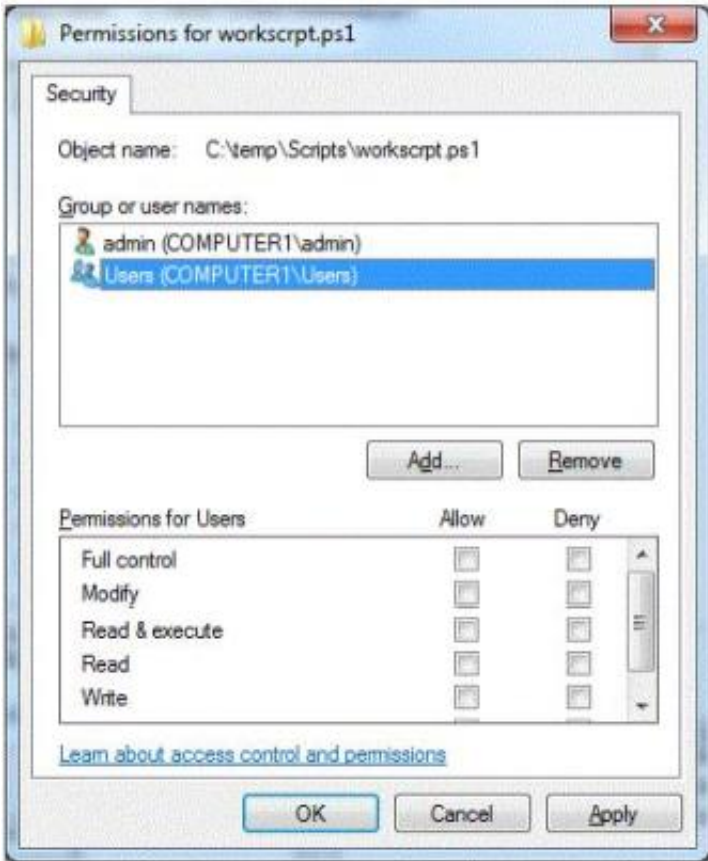
- A. Restart the computer, press F8, and select Safe Mode with Command Prompt.
- B. Restore a system image to the drive.
- C. Restart the computer, press F8, and select Start Windows Normally.
- D. Restart the computer, press F8, and select Last Known Good Configuration.

**Answer:** D

**NEW QUESTION 229**

- (Exam Topic 2)

You have a file on your Windows 7 workstation located at c:\temp\Scripts\. The file name is workscrippts1. You need to allow all users who log in to the workstation the ability to run the script and make changes to it. You do not want the users to delete the file shown in the following image:



Use the drop-down menus to select the answer choice that completes each statement. Each correct selection is worth one point.

**Answer Area**

In order for all users to make changes without deleting the file, the [answer choice] permission is required.

In order for all users to run the script, the [answer choice] permission is required.

**Answer Area**

In order for all users to make changes without deleting the file, the [answer choice] permission is required.

Modify  
Read  
Write

In order for all users to run the script, the [answer choice] permission is required.

Write  
Full Control  
Read and execute

- A. Mastered
- B. Not Mastered

**Answer:** A

**Explanation:**

In order for all users to make changes without deleting the file, the [answer choice] permission is required.

Modify

In order for all users to run the script, the [answer choice] permission is required.

Read and execute

**NEW QUESTION 231**

- (Exam Topic 2)

For each of the following statements, select Yes if the statement is true. Otherwise, select No. Each correct selection is worth one point.



Answer Area

	Yes	No
In Windows 7 Home Premium Edition it is only possible to have one default printer.	<input type="radio"/>	<input type="radio"/>
It is possible to configure a network printer as a local printer without directly attaching the printer to the computer.	<input type="radio"/>	<input type="radio"/>
Printing to an XPS file allows the end user to modify the document from any computer by using an XPS application.	<input type="radio"/>	<input type="radio"/>

- A. Mastered  
 B. Not Mastered

Answer: A

Explanation:

Answer Area

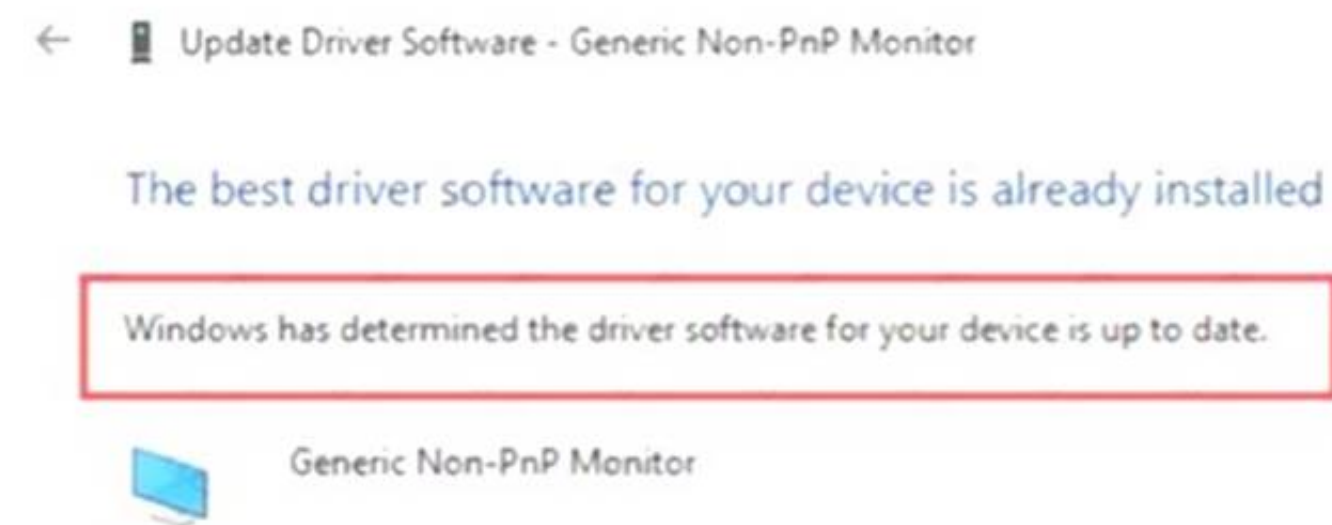
	Yes	No
In Windows 7 Home Premium Edition it is only possible to have one default printer.	<input checked="" type="radio"/>	<input type="radio"/>
It is possible to configure a network printer as a local printer without directly attaching the printer to the computer.	<input checked="" type="radio"/>	<input type="radio"/>
Printing to an XPS file allows the end user to modify the document from any computer by using an XPS application.	<input type="radio"/>	<input checked="" type="radio"/>

#### NEW QUESTION 232

- (Exam Topic 2)

You install a new monitor to your Windows 10 computer.

The following graphic shows the driver recommendations for the monitor.



Instructions: Use the drop-down menus to select the answer choice that completes each statement based on the information presented in the graphic.

NOTE: Each correct selection is worth one point.

Why did the system choose this driver as the best available?

Choose One...

- Windows 10 cannot identify the monitor and has installed the default driver.
- Windows 10 does not have the drivers for the monitor as part of the auto update feature.
- Windows 10 does not support the monitor, and a generic driver must be used.

How can you update the monitor device driver to properly support the make and model?

Choose One...

- Manually install the drivers.
- Run Windows Update.
- Restart the Windows 10 device.

- A. Mastered  
 B. Not Mastered

**Answer:** A

**Explanation:**

Why did the system choose this driver as the best available?

Choose One

Windows 10 cannot identify the monitor and has installed the default driver.
Windows 10 does not have the drivers for the monitor as part of the auto update feature.
Windows 10 does not support the monitor, and a generic driver must be used.

How can you update the monitor device driver to properly support the make and model?

Choose One

Manually install the drivers.
Run Windows Update.
Restart the Windows 10 device.

#### NEW QUESTION 233

- (Exam Topic 2)

Which statement describes code executing in user mode?

- A. It has complete and unrestricted access to the underlying hardware.
- B. It can switch to kernel mode execution to carry out i/o functions.
- C. It can access every memory address and execute any CPU instruction.
- D. It has no ability to directly access hardware or reference memory.

**Answer:** D

#### NEW QUESTION 235

- (Exam Topic 2)

Two students in your class want to work together on a project over the summer break- Courtney is staying on campus, and Ty is taking an internship in Japan. They want to know how to share files in order to work remotely. You suggest Microsoft OneDrive.

Which three features of OneDrive can help Ty and Courtney? (Choose three.)

- A. OneDrive automatically keeps track of the previous 25 versions of all documents.
- B. OneDrive provides the ability to view and control someone's computer desktop to allow for easier collaboration.
- C. When the OneDrive desktop application is installed on a Windows 7 computer, Microsoft Office applications can save directly to OneDrive folders.
- D. OneDrive provides automatic BitLocker encryption of the files stored in the local OneDrive folder and the OneDrive.com folders.
- E. OneDrive allows access to files from any networked device by using OneDrive.com or a OneDrive application on their mobile device.

**Answer:** ACE

#### NEW QUESTION 237

- (Exam Topic 2)

You have a Windows 7 Enterprise workstation that is used by multiple users. You need to allow each of them to encrypt their own files on this workstation. Which tool should you use?

- A. EFS
- B. BitLocker
- C. ZIP
- D. Convert

**Answer:** A

#### NEW QUESTION 239

- (Exam Topic 2)

Your roommate is having problems with his computer. He cannot get Windows to boot up normally. You start the computer and press F8 to see the Advanced Boot Options.

You want to start the computer in a diagnostic mode that also has access to the Internet. Which boot option should you select?

- A. Safe Mode with Networking
- B. Start Windows Normally
- C. Safe Mode
- D. Safe Mode with Command Prompt

**Answer:** A

#### NEW QUESTION 244

- (Exam Topic 2)

A Windows 10 library:

- A. Organizes user files from disparate locations.
- B. Encrypts files by using the Encrypting File System (EFS).
- C. Makes copies of user files in a central location.
- D. Restores files from system backup.

**Answer:** A

**Explanation:**

References:<https://docs.microsoft.com/en-us/windows/client-management/windows-libraries>

#### NEW QUESTION 248

- (Exam Topic 2)

What is the largest single file that you can store on an NTFS file system?

- A. 4 TB
- B. 8 TB
- C. 16 TB
- D. 32 GB

**Answer: C**

#### NEW QUESTION 252

.....



## Relate Links

**100% Pass Your 98-349 Exam with ExamBible Prep Materials**

<https://www.exambible.com/98-349-exam/>

## Contact us

We are proud of our high-quality customer service, which serves you around the clock 24/7.

Viste - <https://www.exambible.com/>