

Oracle

Exam Questions 1Z0-632

PeopleSoft PeopleTools 8.5x Implementation Essentials



NEW QUESTION 1

Which statement is correct about the following PeopleCode statement?

```
class RO_ROWSET extends Rowset
```

- A. RO_ROWSET is the superclass of the Rowset class
- B. Rowset is the superclass of the RO_ROWSET class
- C. RO_ROWSET is an instance of the Rowset class
- D. Rowset is a subclass of the RO_ROWSET class
- E. RO_ROWSET is an application class in the Rowset application package

Answer: D

NEW QUESTION 2

Which two PeopleCode excerpts contain syntax errors?

1	If All(PSU_CRS_SESSN.START_DATE, PSU_CRS_SESSN.END_DATE) And PSU_CRS_SESSN.START_DATE > PSU_CRS_SESSN.END_DATE Then Error MsgGet(1040, 3, "Message Not Found.") End-If;
2	If PSU_EMP_RVW_RVR.REVIEW_TYPE = "E" Then COMMENT Reviewer is an employee; COMMENT Disable REVIEWER_ID; PSU_EMP_RVW_RVR.REVIEWER_ID.Value = PSU_EMP_RVW_RVR.EMPLID; PSU_EMP_RVW_RVR.REVIEWER_ID.Enabled = False; End-If;
3	Local Message &request, &response; Local Row &Row; Local Rowset &Rowset;
4	Local Field &Crstype; &Crstype = GetField(PSU_COURSE_TBL.COURSE_TYPE); &Crstype.Value = "T"; &Crstype.Enabled = False;
5	&OLD_PRICE > &TOTAL_PRICE; &TOTAL_PRICE = &QTY_ORDERED * &PRICE; &GRAND_TOTAL = &GRAND_TOTAL + &TOTAL_PRICE - &OLD_PRICE;

- A. 2
- B. 4
- C. 5
- D. 1
- E. 3

Answer: CE

NEW QUESTION 3

You created a new component and registered it in the portal registry. However, when you test it, the content reference is not shown in the menu navigation. To troubleshoot this issue, examine .

- A. the component structure
- B. the portal registry for component parameters
- C. the portal registry for content reference security
- D. the menu definition for the associated component
- E. the component definition for assigned actions

Answer: D

NEW QUESTION 4

You have been asked to create a new record for student suggestion review, which includes a field for implemented Flag, which will be a check box on the page. Before creating a new field, you look for an existing field to reuse.

FLAG (Field)

Field Type:Character

Field Length:1

Field Labels

	Label ID	Long Name	Short Name	Def
1	APD_APPROVE	Excluded	Ex	1
2	FLAG	Flag	Flag	1
3	NUMERIC	Numeric Field	Numeric	1
4				

Field Format

Format Type:Uppercase

Family Name:

Display Name:

☐ Not Used

☐ Encrypt

☐ Check Field

FLAG, as shown in the exhibit, is a PeopleSoft delivered field. You can use this field if which statement is true?

- A. The field only requires adding translate values
- B. The field only requires modifying it to be a Y/N table
- C. The field only requires modifying the field format
- D. The field does not require any modifications
- E. The field only requires an additional field label

Answer: E

NEW QUESTION 5

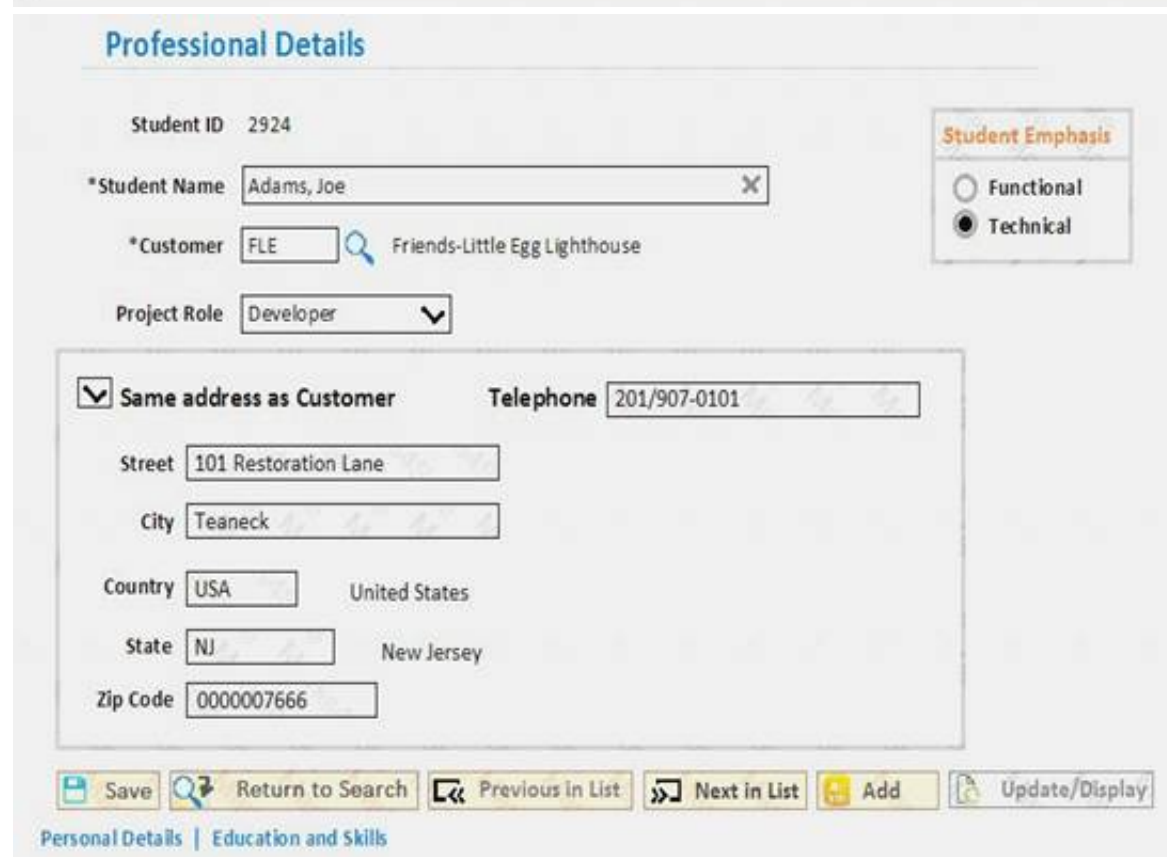
Which two statements are true about how PeopleCode on the SavePreChange and SavePostChange events is processed? (Choose two.)

- A. When placed at the component record level, such PeopleCode triggers a Save when a row is changed
- B. When placed at the component record level, such PeopleCode runs once per row when the user clicks Save
- C. When placed at the component record level, such PeopleCode runs once when the user clicks Save
- D. When placed at the component level, such PeopleCode triggers a Save when data on the page is changed
- E. When placed at the component level, such PeopleCode runs once when the user clicks Save
- F. When placed at the component level, such PeopleCode runs once per row when the user clicks Save

Answer: BD

NEW QUESTION 6

View the exhibits.



You just added a second page to the student component as shown in Exhibit 1. When you test the page as shown in Exhibit 2, no tabs are displayed. What do you need to do to display the tabs?

- A. On the Internet tab of the Component Properties dialog box, select the Display Hyperlinks check box
- B. On the Internet tab of the Component Properties dialog box, select the Display Folder Tabs check box
- C. Enter the labels for the folder tab labels and on the Use tab of the Component Properties dialog box, select the Include in Navigation check box
- D. On the Use tab of the Component Properties dialog box, select the Include in Navigation check box
- E. Enter the labels for the folder tab labels

Answer: A

NEW QUESTION 7

You have been asked to modify the search record for the instructor table to include course type. What should you select on the Use tab of the record field properties for the COURSE_TYPE field?

- A. List Box Item
- B. Duplicate Order Key
- C. Alternate Search Key
- D. Key
- E. Search Key

Answer: E

NEW QUESTION 8

Select the record definition that is configured correctly.

A

COURSE_TBL (Record)											
Record Fields			Record Type								
Num	Field Name	Type	Key	Ordr	Dir	CurC	Srch	List	Sys	Audt	
1	COURSE	Char	Key	1	Asc		Yes	Yes	No		
2	EFFDT	Date	Key	2	Desc		No	No	No		
3	EFF_STATUS	Char	Key	3	Asc		No	No	No		
4	DESCR	Char	Alt		Asc		No	Yes	No		
5	COURSE_TYPE	Char					No	No	No		
6	LENGTH_DAYS	Nbr					No	No	No		
7	TRAINING_UNITS	Nbr					No	No	No		
8	ONSITE	Char					No	No	No		
9	INSTRUCTOR	Char					No	No	No		
10	APP_REL	Char					No	No	No		
11	TOOLS_REL	Char					No	No	No		
12	DESCRLONG	Long					No	No	No		

B

COURSE_TBL (Record)											
Record Fields			Record Type								
Num	Field Name	Type	Key	Ordr	Dir	CurC	Srch	List	Sys	Audt	
1	COURSE	Char	Key	1	Asc		Yes	Yes	No		
2	EFFDT	Date	Key	2	Asc		No	No	No		
3	EFF_STATUS	Char					No	No	No		
4	DESCR	Char	Alt		Asc		No	Yes	No		
5	COURSE_TYPE	Char					No	No	No		
6	LENGTH_DAYS	Nbr					No	No	No		
7	TRAINING_UNITS	Nbr					No	No	No		
8	ONSITE	Char					No	No	No		
9	INSTRUCTOR	Char					No	No	No		
10	APP_REL	Char					No	No	No		
11	DESCRLONG	Long					No	No	No		
12	TOOLS_REL	Char					No	No	No		

C

COURSE_TBL (Record)											
Record Fields			Record Type								
Num	Field Name	Type	Key	Ordr	Dir	CurC	Srch	List	Sys	Audt	
1	COURSE	Char	Key	1	Asc		Yes	Yes	No		
2	EFFDT	Date	Key	2	Desc		No	No	No		
3	EFF_STATUS	Char					No	No	No		
4	DESCR	Char	Alt		Asc		No	Yes	No		
5	COURSE_TYPE	Char					No	No	No		
6	LENGTH_DAYS	Nbr					No	No	No		
7	TRAINING_UNITS	Nbr					No	No	No		
8	ONSITE	Char					No	No	No		
9	INSTRUCTOR	Char					No	No	No		
10	APP_REL	Char					No	No	No		
11	DESCRLONG	Long					No	No	No		
12	TOOLS_REL	Char					No	No	No		

D

COURSE_TBL (Record)											
Record Fields			Record Type								
Num	Field Name	Type	Key	Ordr	Dir	CurC	Srch	List	Sys	Audt	
1	COURSE	Char	Key	1	Asc		Yes	Yes	No		
2	EFFDT	Date	Key	2	Desc		No	No	No		
3	EFF_STATUS	Char					No	No	No		
4	DESCR	Char	Alt		Asc		No	Yes	No		
5	COURSE_TYPE	Char					No	No	No		
6	LENGTH_DAYS	Nbr					No	No	No		
7	TRAINING_UNITS	Nbr					No	No	No		
8	ONSITE	Char					No	No	No		
9	INSTRUCTOR	Char					No	No	No		
10	APP_REL	Char					No	No	No		
11	TOOLS_REL	Char					No	No	No		
12	DESCRLONG	Long					No	No	No		

- A. Exhibit A
- B. Exhibit B
- C. Exhibit C
- D. Exhibit D

Answer: A

NEW QUESTION 9

Which PeopleCode program will take the input student name values and produce the output values?

Input	Output
Dr. Jane Smith, Ph.D.	Dr. Jane Smith
Mark Larsen, B.A.	Mark Larsen
Dr. Gustavo Hinojosa, M.D.	Dr. Gustavo Hinojosa
Vivek Patel, B.S.	Vivek Patel
Jonathan Marsh, M.B.A.	Jonathan Marsh

A

```
&comma_pos = Find(",", &student);
&out = Substring(&student, 1, &comma_pos - 1);
```

B

```
&out = LTrim(&student, ",");
```

C

```
&out = RTrim(&student, ",");
```

D

```
&out = LTrim(&student, ",. ABDMPSh");
```

E

```
&comma_pos = Find(",", &student);
&length = Len(&student);
&out = Substring(&student, 1, &length - &comma_pos);
```

F

```
&out = RTrim(&student, ",. ABDMPSh");
```

- A. Option A
- B. Option B
- C. Option C
- D. Option D
- E. Option E
- F. Option F

Answer: D

NEW QUESTION 10

Your client has asked you to update their PeopleCode programs to replace outdated system variables with current system variables. Which system variable replaces %OperatorId?

- A. %Session
- B. %CurrentUser
- C. %UserId
- D. %SessionUser
- E. %SessionId
- F. %SignonUserId

Answer: C

NEW QUESTION 10

Instructors have complained that they do not have access to a newly registered component and page. The Instructor role that includes the Instructor permission list already exists; both are available for your use. Select the two correct methods that add access for just this user group. (Choose two.)

- A. Modify the content reference (CREF) definition in the portal registry and enable the Author Access option
- B. Re-run the Registration Wizard
- C. Select the option to modify only a permission list, and add the Instructor permission list to this component
- D. Modify the CREF definition in the portal registry and add the Instructor role
- E. Modify the Instructor permission list definition and add access to the new component and page
- F. Modify the CREF definition in the portal registry and add the Instructor permission list
- G. Modify the CREF definition in the portal registry and enable the Public Access option

Answer: BD

NEW QUESTION 13

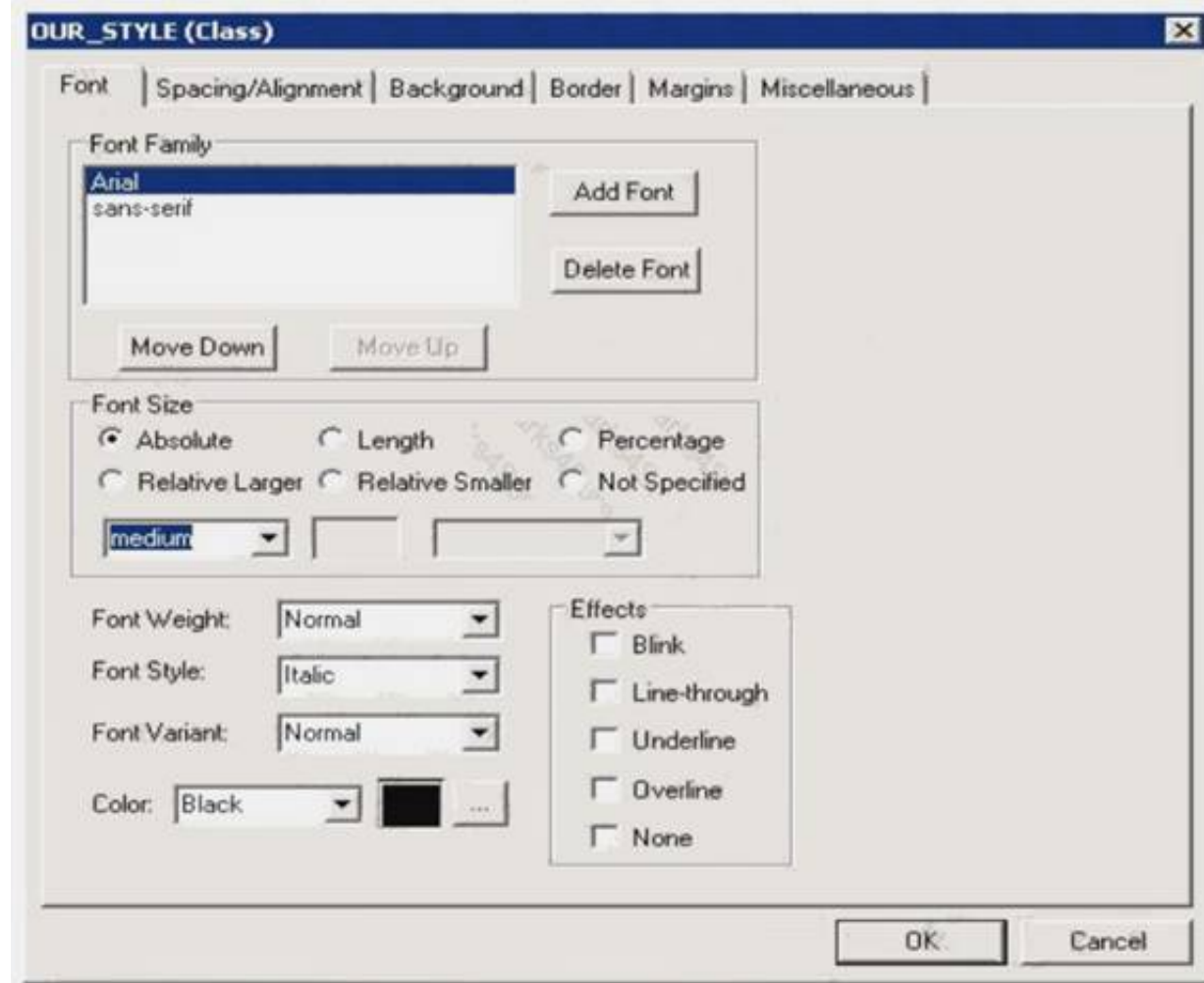
Which statement is correct about developing, modifying, and deploying PeopleSoft fluid applications?

- A. When developing fluid applications, there is a decreased usage and reliance on cascading style sheets (CSS) when compared to classic applications
- B. To develop fluid applications, you will continue to use the same PeopleTools, such as Application Designer, that have been used to develop PeopleSoft applications for decades
- C. For your end users, you will need to implement a separate server infrastructure to deploy fluid applications, keeping it completely separate from the server infrastructure used to deploy classic applications
- D. Any previous application logic you want to port from a classic application to a fluid application will need to be rewritten in Java

Answer: B

NEW QUESTION 18

A colleague needs to update a custom cascading style sheet (CSS) style for your team's fluid application. She has the style definition shown in this exhibit open in Application Designer, but isn't sure if she has opened the correct style definition and asks for your advice.



How do you know she does not have a fluid CSS style open?

- A. The fluid user interface does not use the Arial or the sans-serif font
- B. The fluid user interface uses only the Lucida Grande and Helvetica Neue fonts
- C. In the fluid user interface, font color is not set on the style definition
- D. The current branding theme is what determines the font color for the fluid user interface display
- E. The fluid user interface does not use absolute font size
- F. Only relative font sizes apply to the dynamic nature of the fluid user interface
- G. The fluid user interface uses only free form style sheets, and this style sheet is a fixed form style sheet
- H. Fluid style sheets all have _FL appended to the style name

Answer: D

NEW QUESTION 21

Select two true statements about translate values. (Select two.)

- A. You can assign translate values to any character field that is four characters long or less
- B. The default label for a page field is the translate long name
- C. You can inactivate any translate value by changing the value of the effective status field to "I"
- D. You must maintain translate values through Application Designer
- E. You must enter a translate short name

Answer: AE

NEW QUESTION 26

In this exhibit, identify two settings on the Internet tab of the Component Properties dialog box that apply to fluid components. (Choose two.)



- A. In the Search Page group box: Primary Action
B. In the Search Page group box: Instructional Text
C. In the Pagebar group box: Help Link
D. In the Toolbar group box: Notify
E. In the Toolbar group box: Save
F. In the Multi-Page Navigation group box: Display Folder Tabs (top)

Answer: AF

NEW QUESTION 29

When registering fluid components, assume you usually create the content references so that they reside in the My Fluid Applications folder as shown in the exhibit.



However, for your Fluid Billing component, you register the component so the content reference resides in a folder outside the Fluid Pages folder in the Billing folder (Root>Billing).

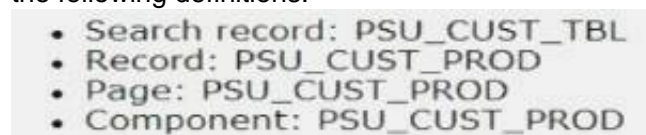
What effect does this have on users accessing this component?

- A. A tile for this fluid component cannot be added to a fluid homepage using the Add Tile button on the Personalize Homepage page
B. Users will not be able to add this component to their Favorites list
C. There is no effect on the user accessing the componen
D. The component can be accessed the same ways as any fluid component
E. Users will not be able to access this component using a smartphone or tablet
F. Users will not be able to navigate to the component using the NavBar, Navigator option

Answer: A

NEW QUESTION 32

You are asked to modify the Customer Products Purchased application to provide auto complete on the search page for the customer name. This application uses the following definitions.



How will you implement this change?

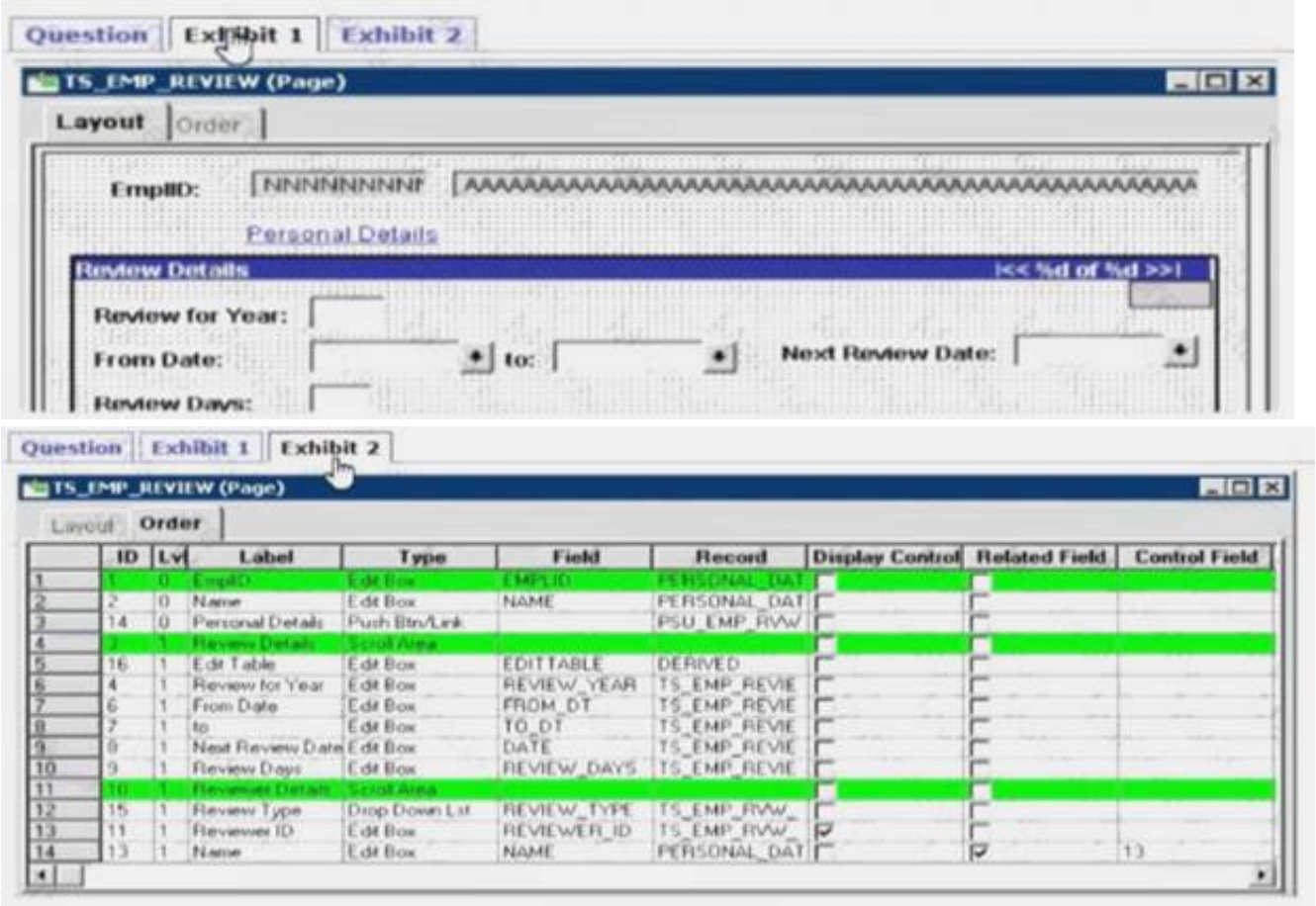
- A. Select the Enable Autocomplete when used in Search Record check box for the DESCR field on the PSU_ CUST_PROD record
B. Select the Enable Autocomplete when used in Search Record check box for the CUSTOMER_ID field on the PSU_ CUST_PROD record
C. Select the Force Search Processing check box on the Use tab of the Component Properties dialog box for PSU_CUST_PROD

- D. Select the Enable Autocomplete when used in Search Record check box for the DESCR field on the PSU_CUST_TBL record
- E. Select the Enable Autocomplete when used in Search Record check box for the CUSTOMER_ID field on the PSU_CUST_TBL record
- F. Select the Show Prompt Button check box for the DESCR field on the PSU_CUST_PROD page

Answer: C

NEW QUESTION 36

View the exhibits. Based on this page layout and page order, select two true statements about this page definition.

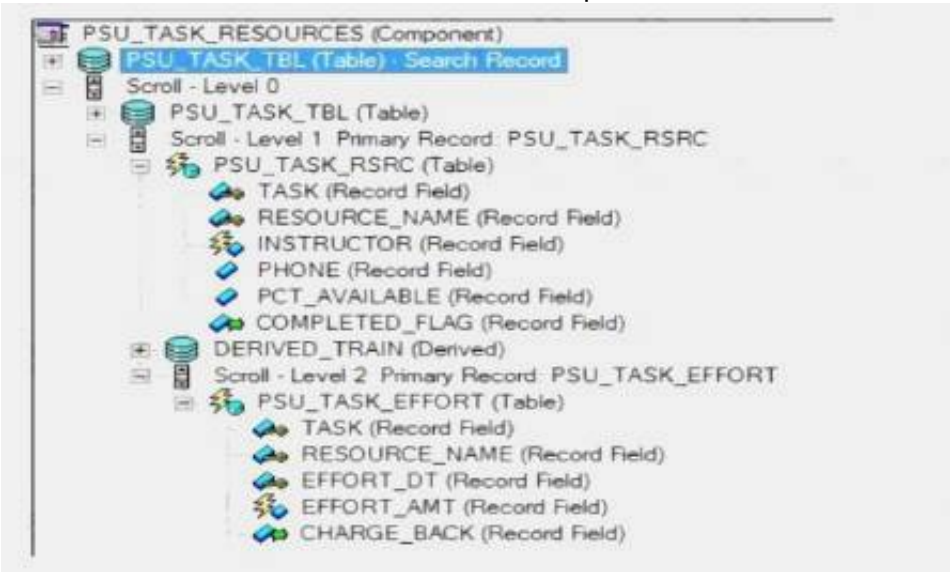


- A. The TS_EMP_REVIEW page is saved without error
- B. The TS_EMP_REVIEW page contains a parent/child design error
- C. The TS_EMP_REVIEW page is saved with a related field error
- D. The TS_EMP_REVIEW page is saved with a duplicate record field warning

Answer: A

NEW QUESTION 39

This exhibit shows the Structure tab of the component definition.



The following PeopleCode program has been placed on the RowInit event for the Level 2 component record (PSU_TASK_EFFORT)

```

If PSU_TASK_RSRC.COMPLETED_FLAG = "Y" Then
    Local Record &Rec_TaskEffort = GetRecord();
    For &i = 1 To &Rec_TaskEffort.FieldCount
        &Rec_TaskEffort.GetField(&i).Enabled = False;
    End-For;
End-If;

```

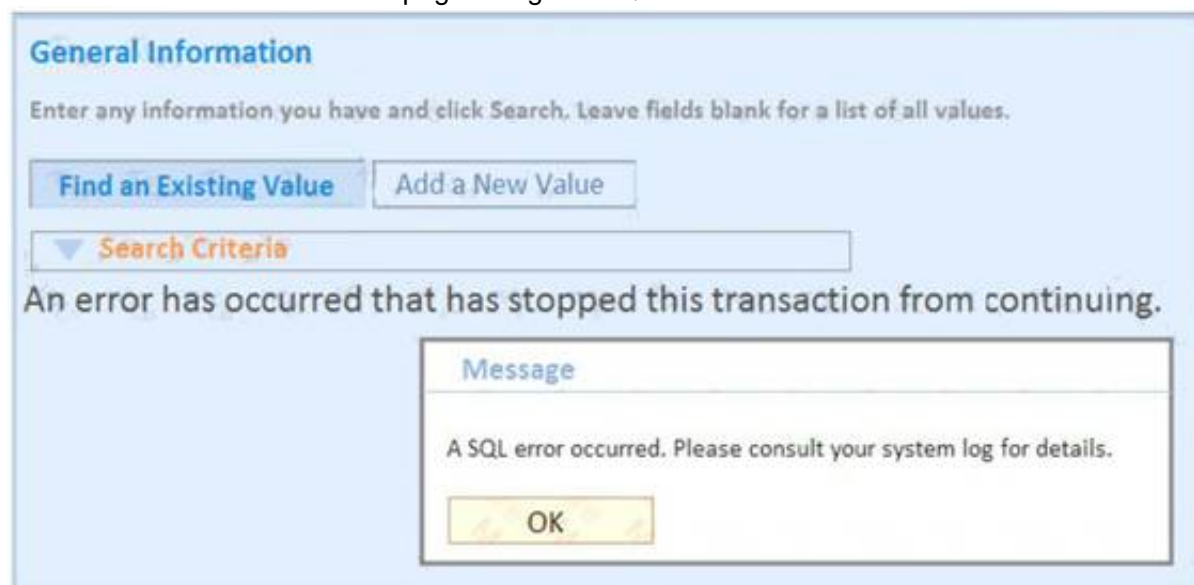
Which three changes are required to move this program to the RowInit event for the Level 1 component record (PSU_TASK_RSRC)? (Choose three.)

- A. Add an outer loop to loop through each row in the level 2 rowset
- B. Instantiate the level 2 rowset from the level 1 row
- C. Add on outer loop to loop through each record in the level 2 rowset
- D. Instantiate the level 1 row
- E. For each level 2 row, instantiate a record object
- F. Instantiate a record object for the level 1 row

Answer: BCF

NEW QUESTION 44

You click a value on the search page and get a SQL error as shown in this exhibit.



What should you do to troubleshoot this issue and fix it?

- A. Check the page definition, make the necessary changes, and save the page
- B. Check the Use tab of the Component Properties dialog box, verify the search record, make the necessary changes, and save the component
- C. Check if the record definition was modified by another developer and perform an alter table
- D. Check the record key structure, make the necessary changes, save the record, and then perform a create indexes
- E. Check the record key, alternate search key, and list box settings of the search record, and save the record

Answer: A

NEW QUESTION 47

While in the office on his desktop computer, a user personalizes his fluid homepage by adding a tile for the My contacts component. The next day at the airport, the user attempts the access the My Contacts component using his smartphone. Unfortunately, he cannot see the My Contacts tile on his field homepage. Why is the user unable to find the My Contacts tile on his fluid homepage when using his smartphone?

- A. The user does not have the Smartphone Access check box enabled in his personalization's
- B. The smartphone does not have a supported version of its operating system
- C. The style, ps_homepage-phone, has not been applied on the Fluid tab of the Component Properties dialog box
- D. The Display on Small Form Factor Homepage check box has not been selected on the Fluid tab of the Component Properties dialog box
- E. The component does not contain any pages of type Small Form Factor

Answer: D

NEW QUESTION 50

Which two field types should be places as the last field in the list of fields in a PeopleSoft record definition? (Select two.)

- A. Character
- B. Attachment
- C. ImageReference
- D. Prompt
- E. Image
- F. LongCharacter

Answer: DEF

NEW QUESTION 52

Which three actions occur during the component build process? (Choose three.)

- A. Component record RowInit PeopleCode runs
- B. Record field FieldFormula PeopleCode runs
- C. Component record RowInsert PeopleCode runs
- D. All component-level PeopleCode runs
- E. Record field RowInsert PeopleCode runs
- F. Record field RowInit PeopleCode runs
- G. All rows in the record are loaded into the component buffer

Answer: BCD

NEW QUESTION 54

Examine this PeopleCode program excerpt:

```
class OCP_ROWSET extends Rowset

    property integer FilledRowCount get;
    method OCP_ROWSET(&strRecName As string, &strDataFld As string, &strGetOrCreate As
string);
    method InsertRow(&iRow As integer) Returns boolean;

end-class;
```

Select the three correct statements. (Choose three.)

- A. The OCP_ROWSET method runs automatically whenever an object is instantiated from the OCP_ROWSET class
- B. OCP_ROWSET is the constrictor method for the OCP_ROWSET class
- C. Executing the RO_ROWSET method instantiates an object of the OCP_ROWSET class
- D. The OCP_ROWSET method must initialize an object of the Rowset class
- E. The OCP_ROWSET method is added to the Rowset class, and, by extension, to any instances of the Rowset class

Answer: ABD

NEW QUESTION 58

When testing a fluid page, one of your colleagues says that the page suddenly is not rendering as expected. He believes he may have accidentally deleted a group box on the page. Using the developer tools of your browser, you inspect the HTML elements.

Which vital structural element of a fluid page must still exist in order for the page to render properly?

- A. <div class="ps_anchor"... .</div>
- B. <div class="ps_main"... .</div>
- C. <div class="ps_box-pagetabs"... .</div>
- D. <div class="ps_pspagecontainer_srch"</div>
- E. <div class="ps_box-group psc_layout psc_apps_content"... .</div>

Answer: E

NEW QUESTION 61

You surround a set of page controls with a group box on a fluid page. When rendered in HTML, what tag will those page controls be within?

- A. <div>
- B. <embed>
- C. <iframe>
- D. <datalist>
- E. <frame>
- F. <area>

Answer: E

NEW QUESTION 63

Which two PeopleCode excerpts contain syntax errors? (Choose two.)

1	If EO_RATECALC_HDR.GENERATE_CROSS_RT = "Y" Then &RS1.ShowAllRows(); EO_RATECALC_HDR.RATE_TRIANGULATE = "N"; End-If;
2	&OLD_PRICE = &TOTAL_PRICE; &TOTAL_PRICE + &NEW_PRICE = &GRAND_TOTAL; GRAND_TOTAL = &GRAND_TOTAL + &TOTAL_PRICE - &OLD_PRICE;
3	Local Field &Crstype; &Crstype = GetField(PSU_COURSE_TBL.COURSE_TYPE); &Crstype.Valyue = "T" &Crstype.Enabled <> False;
4	Local Rowset &Rowset = GetRowset(); Local Row &Row1, &Row2;
5	If PSU_EMP_REVIEW.FROM_DT > PSU_EMP_REVIEW.TO_DT Then Error ("From date should be prior to To date."); End-If;

- A. 1
- B. 4
- C. 5
- D. 2
- E. 3

Answer: DE

NEW QUESTION 67

You are testing the new Customer Table page and notice that you are missing a Return to Search button on the page.

Customer Table

Customer: AAB

Contract Date: 01/01/2000 31

*Description: ABN AMRO Bank

Short Description: ABN AMRO

Telephone: 020442 14 55

Ticker Symbol

Customer Type

☐ Customer
☐ Partner
☐ Employee

Street: Buitenveldersien 101

City: Amsterdam

Country: NLD Netherlands

State

Zip Code: 1082 VB

Save

Previous in List

Next in List

Notify

Add

Update/Display

To add this button in Application Designer, open the Component Properties dialog box and .

- On the Internet tab, select Return to Search
- On the Internet tab, select Page Navigation in History
- On the Use tab, select Update/Display
- On the Internet tab, select Return to List
- On the Use tab, select Return to Search

Answer: D

NEW QUESTION 71

Which two PeopleCode excerpts contain syntax errors? (Choose two.)

1	<pre>method OnNotify /* &msg as Message */ /* Extends/implements PS_PT:Integration:INotificationHandler.OnNotify */ &msg.ExecuteEdits(%Edit_PromptTable); end-method;</pre>
2	<pre>Local number &total, &spent, &to_go; &total = PSU_TASK_TBL.EFFORT_TOTAL; Declare Function Calc_Effort_ToGo PeopleCode DERIVED_TRAIN.EFFORT_TO_GO File Calc_Effort_ToGo(&total, &spent, &to_go);</pre>
3	<pre>import PSU:Math; Local PSU:Math &m = create PSU:Math(); Local number &answer; &answer = &m.Multiply(4, 5);</pre>
4	<pre>class Feed property string FeedFormat get; private instance string &feedFormat_inst; end-class; get FeedFormat /* Returns String */ Return &feedFormat_inst; end-get; set FeedFormat /* &NewValue as String */ &feedFormat_inst = &NewValue; end-set;</pre>
5	<pre>class Math method Math(); method Multiply(&x As number, &y As number) Returns number; method Add(&x As number, &y As number) Returns number; protected method Communicate(&text As string); end-class;</pre>

- A. 1
- B. 2
- C. 3
- D. 4
- E. 5

Answer: DE

NEW QUESTION 73

An end user saves the data after making a change to their personal address, and the system updates the table for that page. In this case, that personal address information is also stored in a table used to generate reports. Upon saving the address, the system also updates the equivalent information stored in the reporting table.

What form of maintaining referential integrity has been implemented in this scenario?

- A. Parent-child relationship
- B. Occurs level
- C. Prompt table edit
- D. PeopleCode running a SQLExec statement
- E. Expert entry

Answer: C

NEW QUESTION 74

.....

Thank You for Trying Our Product

We offer two products:

1st - We have Practice Tests Software with Actual Exam Questions

2nd - Questions and Answers in PDF Format

1Z0-632 Practice Exam Features:

- * 1Z0-632 Questions and Answers Updated Frequently
- * 1Z0-632 Practice Questions Verified by Expert Senior Certified Staff
- * 1Z0-632 Most Realistic Questions that Guarantee you a Pass on Your First Try
- * 1Z0-632 Practice Test Questions in Multiple Choice Formats and Updates for 1 Year

100% Actual & Verified — Instant Download, Please Click
[Order The 1Z0-632 Practice Test Here](#)