

## Exam Questions 010-151

Cisco Certified Technician (CCT) for Data Center

<https://www.2passeasy.com/dumps/010-151/>



#### NEW QUESTION 1

Which method does FCIP use to enable connectivity of geographically distributed Fibre Channel SANs over IP?

- A. routing
- B. tunneling
- C. handshaking
- D. transporting

**Answer:** B

#### NEW QUESTION 2

The Ethernet specification details several different fiber optic media types. What is the wire transmission speed for 100BASE-FX Ethernet?

- A. 10 Mb/s
- B. 100 Mb/s
- C. 1000 Mb/s
- D. 10000 Mb/s

**Answer:** B

#### NEW QUESTION 3

Which type of connection across the network does a SAN allow for multiple servers to access an unlimited amount of storage devices?

- A. any-to-many
- B. many-to-any
- C. any-to-any
- D. any-to-one
- E. one-to-any
- F. one-to-one

**Answer:** C

#### NEW QUESTION 4

Which two statements about the Ethernet media are true? (Choose two.)

- A. A twisted-pair cable system has each pair of wires twisted together to reduce electromagnetic interferenc
- B. Compared to multimode fiber, the single-mode fiber is designed for shorter distances with higher cos
- C. 40 Gigabit Ethernet twinax cables deploy Enhanced Quad Small Form Factor Pluggable (QSFP+) connector
- D. The twinax cables can be found in either a shielded twisted-pair or an unshielded twisted-pair variatio

**Answer:** AC

#### NEW QUESTION 5

What is the wire transmission speed for 100GBASE-ER4 Ethernet?

- A. 100 Mb/s
- B. 1 Gb/s
- C. 10 Gb/s
- D. 100 Gb/s

**Answer:** D

#### NEW QUESTION 6

Which cable is used to access the command-line interface of a Cisco UCS 6120XP Fabric Interconnects?

- A. KVM cable
- B. console cable
- C. Ethernet cable
- D. SFP+ Ethernet transceiver cable

**Answer:** B

#### NEW QUESTION 7

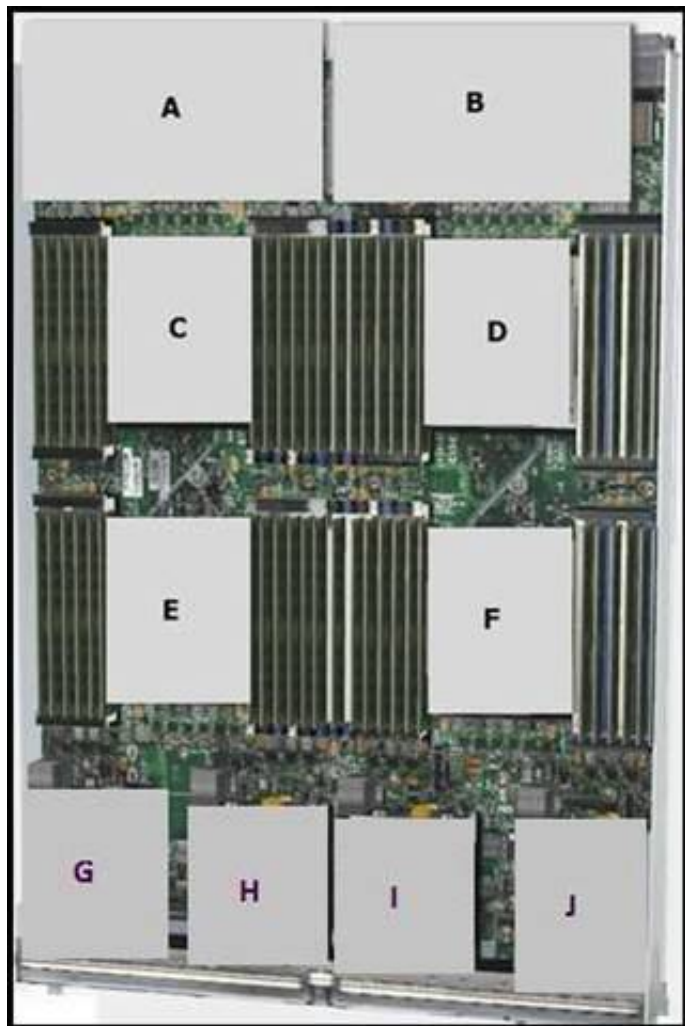
How do you find the serial number of a Cisco UCS 5108 Blade Server chassis?

- A. Use the Cisco UCS Admi
- B. Use the Cisco UCS Applicatio
- C. Use the Cisco UCS Assistan
- D. Use the Cisco UCS Manage

**Answer:** D

#### NEW QUESTION 8

Refer to the exhibit.



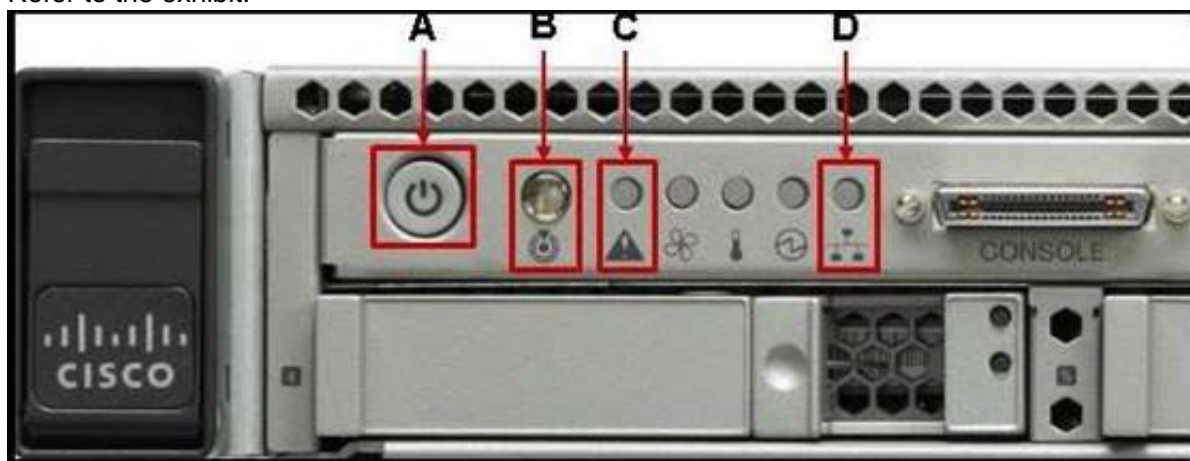
Which item does F represent?

- A. HDD 1
- B. TFP Module
- C. SuperCap Module
- D. CPU 2
- E. CMOS Battery

**Answer: D**

#### NEW QUESTION 9

Refer to the exhibit.



Which statement correctly identifies the front panel LEDs on the Cisco UCS C220 Server?

- A. A is power button and power status LED; B is identification button and LED; C is system status LED; D is network link activity LED
- B. A is network link activity LED; B is system status LED; C is power button and power status LED; D is identification button and LED
- C. A is system status LED; B is network link activity LED; C is power button and power status LED; D is identification button and LED
- D. A is network link activity LED; B is system status LED; C is identification button and LED; D is power button and power status LED

**Answer: A**

#### NEW QUESTION 10

Refer to the exhibit.



Which Cisco MDS chassis supports the 48-Port 16-Gbps Fibre Channel Switching Module?

- A. MDS 9509
- B. MDS 9513
- C. MDS 9710
- D. MDS 9506

**Answer:** C

#### NEW QUESTION 10

Which supervisor module is supported by a Cisco Nexus 7700 Series Switch?

- A. first-generation supervisor module
- B. second-generation supervisor module (Sup2)
- C. second-generation supervisor enhanced module (Sup2E)
- D. third-generation supervisor enhanced module (Sup3E)

**Answer:** C

#### NEW QUESTION 15

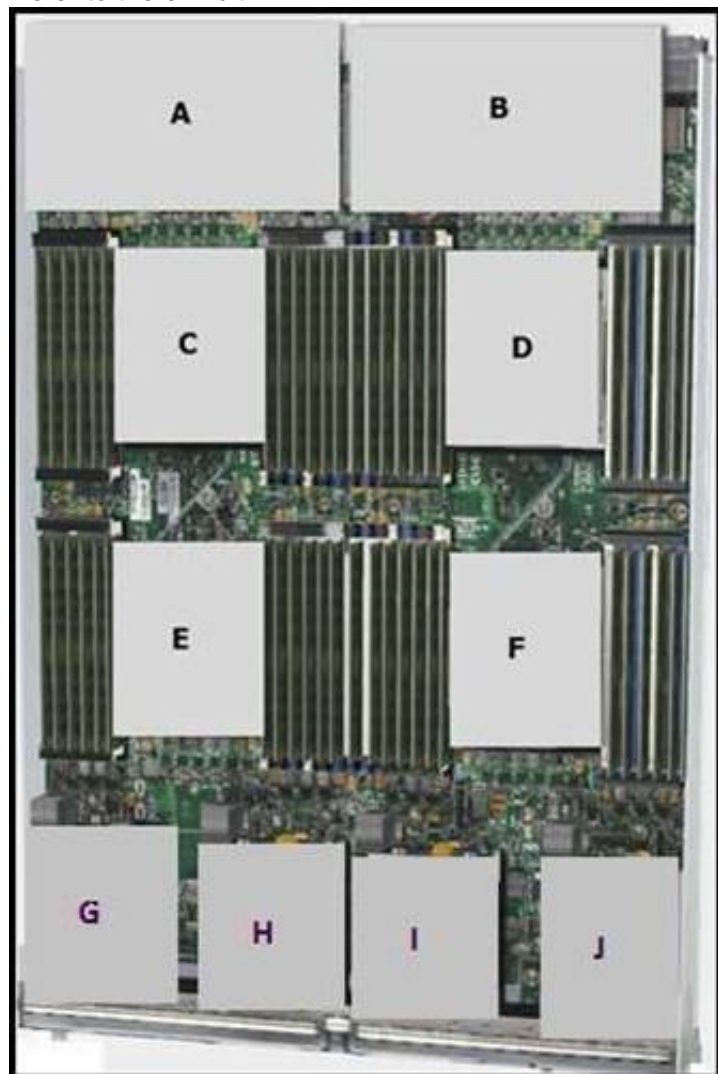
Which type of optics module is supported by a 12-port 100 GE Cisco Nexus 7700 F3 Series I/O module?

- A. CPAK
- B. QSFP+
- C. SFP/SFP+
- D. CFP

**Answer:** A

#### NEW QUESTION 20

Refer to the exhibit.



Which item does A represent?

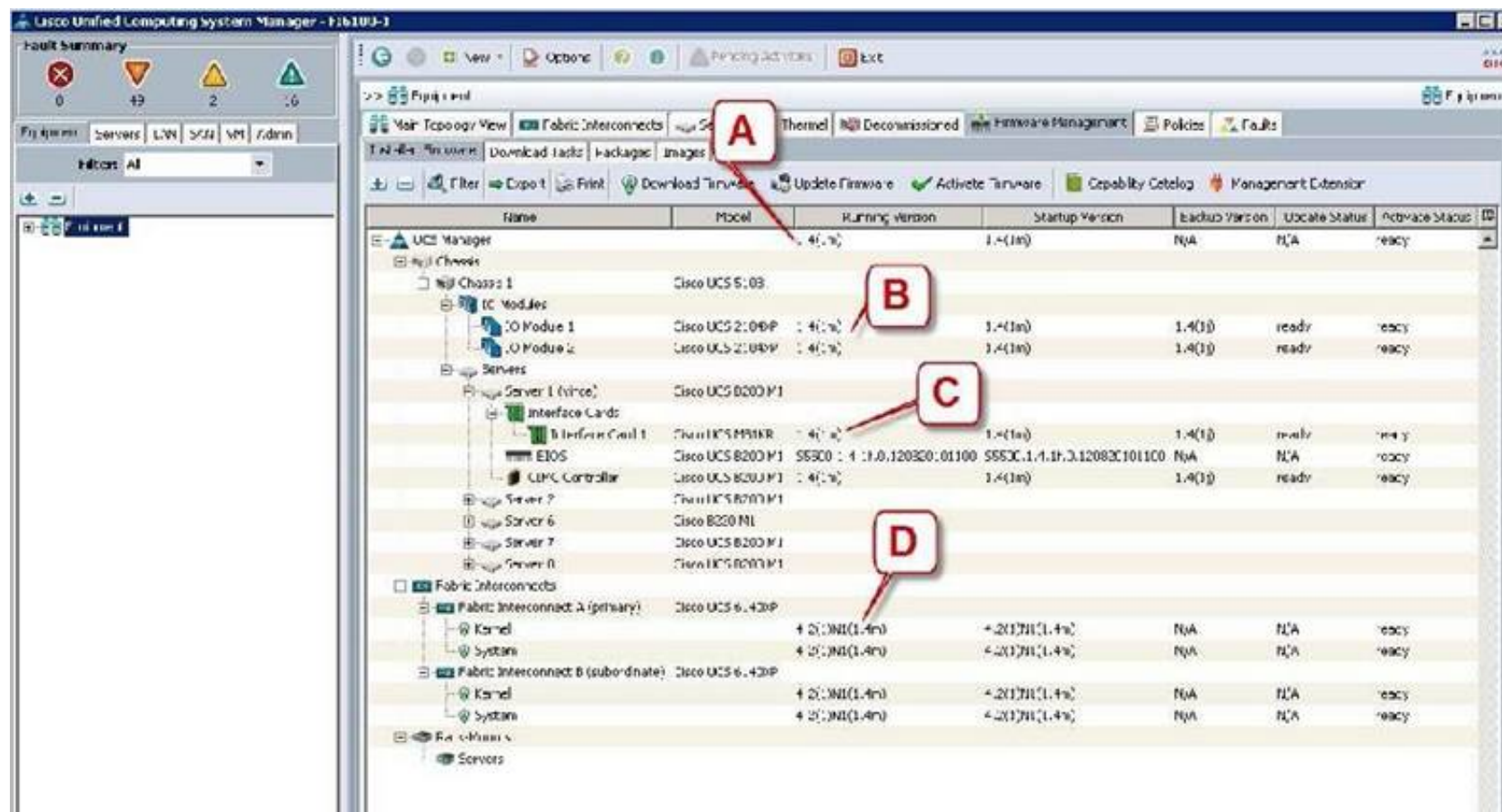
- A. Emulex Adapter Card for Cisco UCS B420 M3 Blade Servers
- B. Virtual Interface Card for Cisco UCS B420 M3 Blade Servers
- C. mLOM for Cisco UCS B420 M3 Blade Servers
- D. Virtual Emulex Adapter Card for Cisco UCS B420 M3 Blade Servers
- E. SuperCap module for Cisco UCS B420 M3 Blade Servers

**Answer:** C

#### NEW QUESTION 24

Refer to the exhibit.





Which call-out accurately shows the current running version of the Cisco UCS Manager management software?

- A. A - UCS Manager running version 1.4(1m)
- B. B - IO Module 1 running version 1.4(1m)
- C. C - Interface Card 1 running version 1.4(1m)
- D. D - Kernel running version 4.2(1)N(1.4m)

Answer: A

#### NEW QUESTION 25

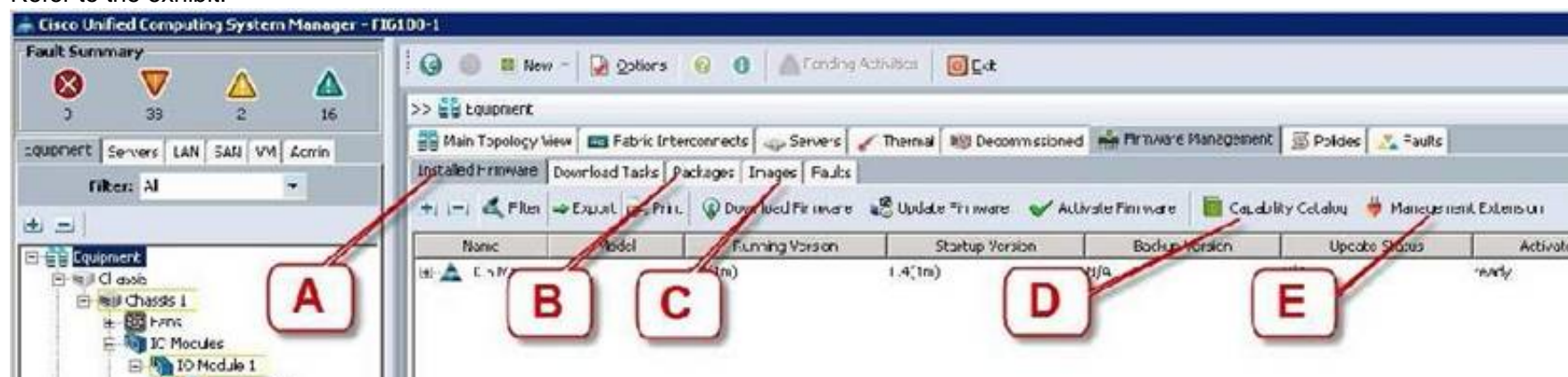
Which command-line interface mode is best described by this prompt?  
UCS-switch-A (nxos)#

- A. maintenance mode
- B. EXEC mode
- C. local management mode
- D. global configuration mode
- E. Cisco IOS mode

Answer: B

#### NEW QUESTION 26

Refer to the exhibit.



Where is the best place to find the B200 BIOS version used in a specific Cisco UCS Manager version?

- A. A - Installed Firmware
- B. B - Packages
- C. C - Images
- D. D - Capability Catalog
- E. E - Management Extension

Answer: B

#### NEW QUESTION 27

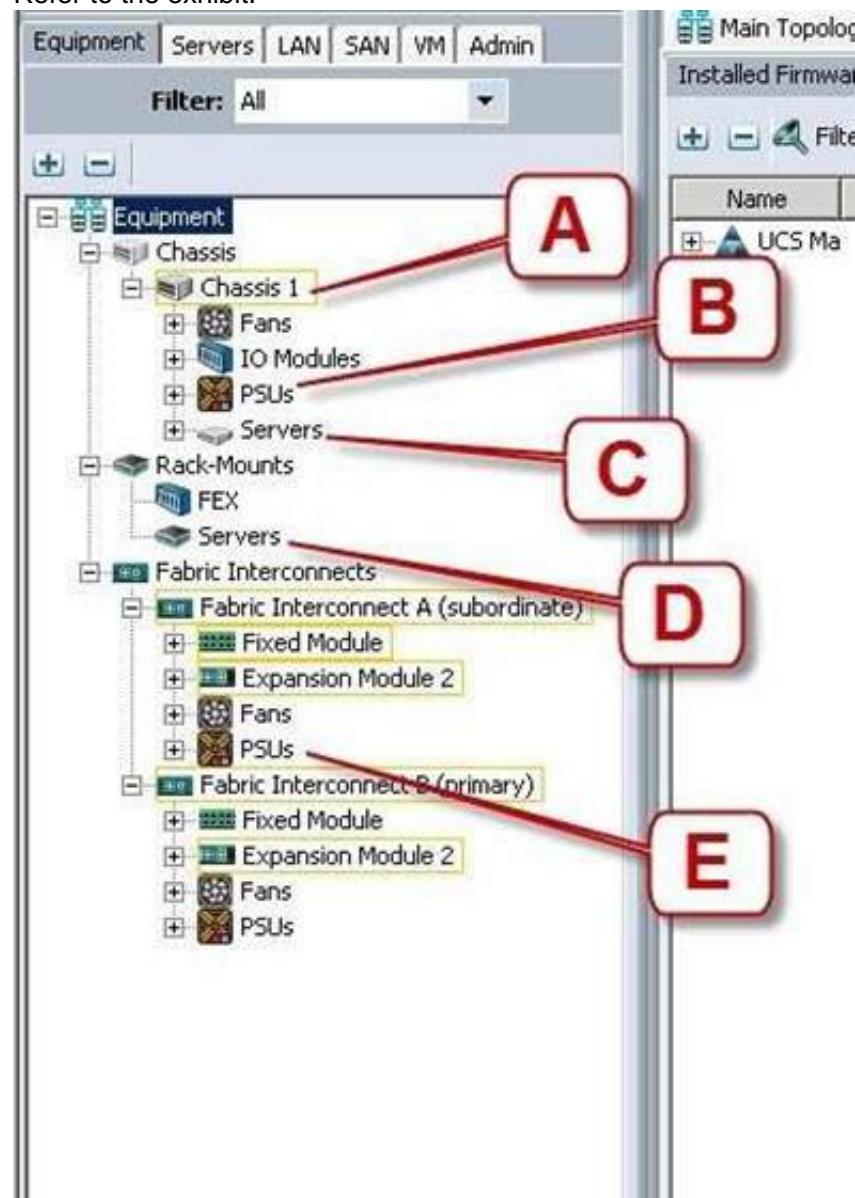
Which command syntax is correct to reset the admin password when the switch is in the kickstart prompt "switch(boot) #"?

- A. exec -> admin-password <password>
- B. connect local-mgmt -> admin-password <password>
- C. configure terminal -> admin-password <password>
- D. connect nxos -> admin-password <password>
- E. admin-password <password>

Answer: C

### NEW QUESTION 32

Refer to the exhibit.



Where is the best place to see the power supply status of the blade server enclosure?

- A. A - Chassis 1
- B. B - Chassis 1 - PSUs
- C. C - Chassis1 - Servers
- D. D - Rack-Mounts - Servers
- E. E - Fabric Interconnects A - PSUs

Answer: B

### NEW QUESTION 34

On the Sensors page from the CIMC view, which four tabs are displayed to view further information? (Choose four.)

- A. Power Supply
- B. Fan
- C. Memory
- D. CPU
- E. LEDs
- F. Temperature

Answer: ABEF

### NEW QUESTION 37

When the Cisco UCS Manager is used to verify the B- or C-Series device, which two types of Overall Status are acceptable and do not indicate a failure? (Choose two.)

- A. Online
- B. OK
- C. Unassociated
- D. Active

Answer: BC

### NEW QUESTION 40

What is the correct path to verify the Overall Status of Chassis 1 | Server 3?

- A. Equipment Tab > Chassis > Chassis 1 > Servers > Server 3 Status tab
- B. Equipment Tab > Chassis > Chassis 1 > Servers > Server 3 General tab
- C. Equipment Tab > Chassis > Chassis 1 > Servers > Server 3 FSM tab
- D. Servers Tab > Chassis > Server 3 General tab

- E. Status Tab > Chassis > Chassis 1 > Servers > Server 3
- F. Admin Tab > Chassis > Chassis 1 > Servers > Server 3 General tab

**Answer:** B

#### NEW QUESTION 43

If the Overall Status for a Cisco UCS B-Series Blade Server indicates a failure in the Cisco UCS Manager, such as discovery-failed, which statement is true?

- A. The server shuts dow
- B. The server automatically reboots reboot in 3 minute
- C. The endpoints on that server cannot be upgrade
- D. The server is online, but the administrator cannot assign a service profile to that blad

**Answer:** C

#### NEW QUESTION 44

Which three components are hot swappable in a Cisco UCS Blade Server and Chassis? (Choose three.)

- A. Fabric Extender
- B. Power supply
- C. Heat sink
- D. SAS Hard Drive
- E. 2x8GB Kit DIMMs
- F. Mezzanine card

**Answer:** ABD

#### NEW QUESTION 48

Which three firmware components does the Host Upgrade Utility upgrade? (Choose three.)

- A. Fabric Interconnect firmware
- B. LAN on Motherboard
- C. Cisco UCS Manager
- D. CIMC
- E. System BIOS

**Answer:** BDE

#### NEW QUESTION 49

Which two commands allow you to view the state of high availability between the two clustered Fabric Interconnects? (Choose two.)

- A. show cluster state extended
- B. show cluster extended-state
- C. show cluster HA status
- D. show cluster state

**Answer:** BD

#### NEW QUESTION 54

Which three troubleshooting procedures do you perform when there is no power to a Cisco UCS B250 M2 Blade Server? (Choose three.)

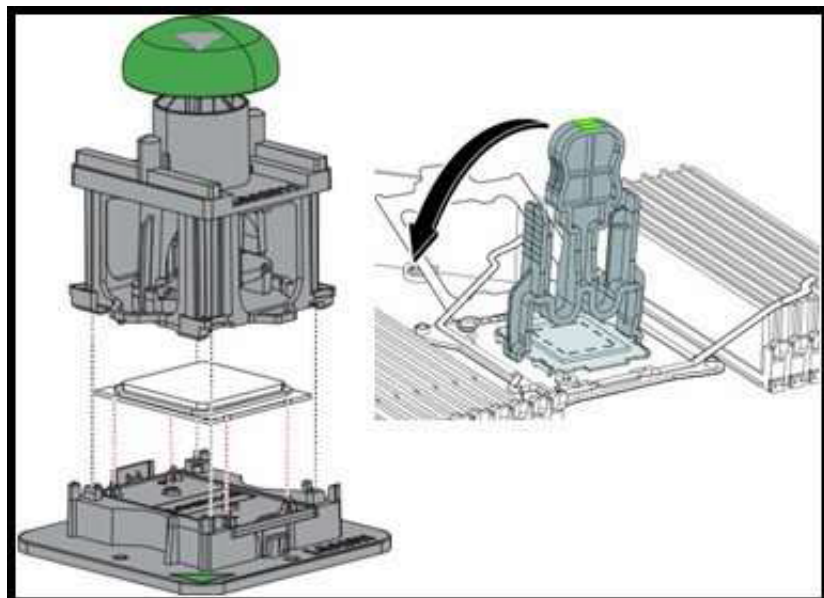
- A. Decommission and acknowledge the blad
- B. Check the back of the blade to ensure that there is no damage to the connection that goes into chassi
- C. Reseat the memory DIMM
- D. Check the CPU sockets for bent pin
- E. Reseat the blade in the same slot in the chassi
- F. Move the blade to another slot in the chassi

**Answer:** BEF

#### NEW QUESTION 59

Refer to the exhibit.





This image shows a CPU Pick-and-Place tool and a CPU Socket Protective Cap Removal tool.  
 Which types of Cisco UCS servers and Intel Xeon processors do these tools support?

- A. Cisco UCS B22 Blade Server, C22 Rack Server, and C24 Rack Server with Intel Xeon E5-2400 Series processors
- B. Cisco UCS B22 Blade Server, C22 Rack Server, and C24 Rack Server with Intel Xeon E5-2600 Series processors
- C. Cisco UCS B200 M3 Blade Server, B420 M3 Blade Server, C220 Rack Server, C240 Rack Server, and C420 Rack Server with Intel Xeon E5-2400 Series processors
- D. Cisco UCS B200 M3 Blade Server, B420 M3 Blade Server, C220 Rack Server, C240 Rack Server, and C420 Rack Server with Intel Xeon E5-2600 Series processors

**Answer:** D

#### NEW QUESTION 61

Up to what speed can Category 5e UTP cable transmit data?

- A. 10 Mb/s
- B. 100 Mb/s
- C. 1000 Mb/s
- D. 10000 Mb/s

**Answer:** C

#### NEW QUESTION 64

Refer to the exhibit.



Which three options are features of the Cisco UCS 6248UP Fabric Interconnect front panel? (Choose three.)

- A. Console port
- B. FCoE port
- C. 10 Gb/s port
- D. Fan module
- E. USB port

**Answer:** ADE

#### NEW QUESTION 66

Which two Cisco Nexus switches provide the foundation of the Cisco Application Centric Infrastructure? (Choose two.)

- A. Cisco Nexus 7718 switch
- B. Cisco Nexus 9508 switch
- C. Cisco Nexus 7710 switch
- D. Cisco Nexus 93128TX switch
- E. Cisco Nexus 6004 switch

**Answer:** BD

#### NEW QUESTION 67

Which type of optics module is supported by a 6-port 40 GE Cisco Nexus 7000 M2 Series I/O module?

- A. CPAK
- B. QSFP+
- C. SFP/SFP+
- D. CFP

**Answer:** B



**NEW QUESTION 69**

How many 10GBASE-T port licenses are preinstalled on a Cisco Nexus 3064-32T?

- A. 16
- B. 32
- C. 48
- D. 64

**Answer:** B

**NEW QUESTION 73**

.....

## THANKS FOR TRYING THE DEMO OF OUR PRODUCT

Visit Our Site to Purchase the Full Set of Actual 010-151 Exam Questions With Answers.

We Also Provide Practice Exam Software That Simulates Real Exam Environment And Has Many Self-Assessment Features. Order the 010-151 Product From:

<https://www.2passeasy.com/dumps/010-151/>

## Money Back Guarantee

### 010-151 Practice Exam Features:

- \* 010-151 Questions and Answers Updated Frequently
- \* 010-151 Practice Questions Verified by Expert Senior Certified Staff
- \* 010-151 Most Realistic Questions that Guarantee you a Pass on Your FirstTry
- \* 010-151 Practice Test Questions in Multiple Choice Formats and Updatesfor 1 Year