

Oracle

Exam Questions 1Z0-071

Oracle Database 12c SQL



NEW QUESTION 1

View the exhibit and examine the structure of the CUSTOMERS table.

Table CUSTOMERS		
Name	Null?	Type
CUST_ID	NOT NULL	NUMBER
CUST_FIRST_NAME	NOT NULL	VARCHAR2 (20)
CUST_LAST_NAME	NOT NULL	VARCHAR2 (40)
CUST_GENDER	NOT NULL	CHAR (1)
CUST_YEAR_OF_BIRTH	NOT NULL	NUMBER (4)
CUST_MARITAL_STATUS		VARCHAR2 (20)
CUST_STREET_ADDRESS	NOT NULL	VARCHAR2 (40)
CUST_POSTAL_CODE	NOT NULL	VARCHAR2 (10)
CUST_CITY	NOT NULL	VARCHAR2 (30)
CUST_STATE_PROVINCE	NOT NULL	VARCHAR2 (40)
COUNTRY_ID	NOT NULL	NUMBER
CUST_INCOME_LEVEL		VARCHAR2 (30)
CUST_CREDIT_LIMIT		NUMBER
CUST_EMAIL		VARCHAR2 (30)

Which two tasks would require subqueries or joins to be executed in a single statement?

- A. finding the number of customers, in each city, whose credit limit is more than the average credit limit of all the customers
- B. finding the average credit limit of male customers residing in 'Tokyo' or 'Sydney'
- C. listing of customers who do not have a credit limit and were born before 1980
- D. finding the number of customers, in each city, who's marital status is 'married'.
- E. listing of those customers, whose credit limit is the same as the credit limit of customers residing in the city 'Tokyo'.

Answer: AE

NEW QUESTION 2

You must display details of all users whose username contains the string 'ch_'. (Choose the best answer.) Which query generates the required output?

- A. SELECT * FROM users Where user_name LIKE '%ch_';
- B. SELECT * FROM usersWhere user_name LIKE '%ch_%'ESCAPE'%';
- C. SELECT * FROM users Where user_name LIKE 'ch_%' ESCAPE '_';
- D. SELECT * FROM users Where user_name LIKE '%ch_%' ESCAPE '\';

Answer: B

NEW QUESTION 3

You must create a SALES table with these column specifications and data types: (Choose the best answer.) SALESID: Number

STOREID: Number ITEMID: Number

QTY: Number, should be set to 1 when no value is specified

SLSDATE: Date, should be set to current date when no value is specified

PAYMENT: Characters up to 30 characters, should be set to CASH when no value is specified Which statement would create the table?

- A. CREATE TABLE Sales(SALESID NUMBER (4),STOREID NUMBER (4),ITEMID NUMBER (4),QTY NUMBER DEFAULT = 1,SLSDATE DATE DEFAULT SYSDATE,PAYMENT VARCHAR2(30) DEFAULT = "CASH");
- B. CREATE TABLE Sales(SALESID NUMBER (4),STOREID NUMBER (4),ITEMID NUMBER (4),QTY NUMBER DEFAULT = 1,SLSDATE DATE DEFAULT 'SYSDATE',PAYMENT VARCHAR2(30) DEFAULT CASH);
- C. CREATE TABLE Sales(SALESID NUMBER (4),STOREID NUMBER (4),ITEMID NUMBER (4),qty NUMBER DEFAULT = 1,SLSDATE DATE DEFAULT SYSDATE,PAYMENT VARCHAR2(30) DEFAULT = "CASH");
- D. Create Table sales(salesid NUMBER (4),Storeid NUMBER (4),Itemid NUMBER (4),QTY NUMBER DEFAULT 1,Slssize DATE DEFAULT SYSDATE,payment VARCHAR2(30) DEFAULT 'CASH');

Answer: D

NEW QUESTION 4

Which statement is true regarding the USING clause in table joins? (Choose two.)

- A. It can be used to join a maximum of three tables.
- B. It can be used to access data from tables through equijoins as well as nonequijoins.
- C. It can be used to join tables that have columns with the same name and compatible data types.
- D. It can be used to restrict the number of columns used in a NATURAL join.

Answer: CD

NEW QUESTION 5

Evaluate the following SQL statement:

```
SQL> select cust_id, cust_last_name "Last name" FROM customers
```

```
WHERE country_id = 10 UNION
```

```
SELECT cust_id CUST_NO, cust_last_name FROM customers
```

```
WHERE country_id = 30
```

Identify three ORDER BY clauses either one of which can complete the query.

- A. ORDER BY "Last name"
- B. ORDER BY 2, cust_id
- C. ORDER BY CUST_NO
- D. ORDER BY 2, 1
- E. ORDER BY "CUST_NO"

Answer: ABD

Explanation:

Using the ORDER BY Clause in Set Operations

- The ORDER BY clause can appear only once at the end of the compound query.
- Component queries cannot have individual ORDER BY clauses.
- The ORDER BY clause recognizes only the columns of the first SELECT query.
- By default, the first column of the first SELECT query is used to sort the output in an ascending order.

NEW QUESTION 6

On your Oracle 12c database, you invoked SQL *Loader to load data into the EMPLOYEES table in the HR schema by issuing the following command:

```
$> sqlldr hr/hr@pdb table=employees
```

Which two statements are true regarding the command?

- A. It succeeds with default settings if the EMPLOYEES table belonging to HR is already defined in the database.
- B. It fails because no SQL *Loader data file location is specified.
- C. It fails if the HR user does not have the CREATE ANY DIRECTORY privilege.
- D. It fails because no SQL *Loader control file location is specified.

Answer: AC

NEW QUESTION 7

Which statement is true about transactions?

- A. A set of Data Manipulation Language (DML) statements executed in a sequence ending with a SAVEPOINT forms a single transaction.
- B. Each Data Definition Language (DDL) statement executed forms a single transaction.
- C. A set of DDL statements executed in a sequence ending with a COMMIT forms a single transaction.
- D. A combination of DDL and DML statements executed in a sequence ending with a COMMIT forms a single transaction.

Answer: B

Explanation:

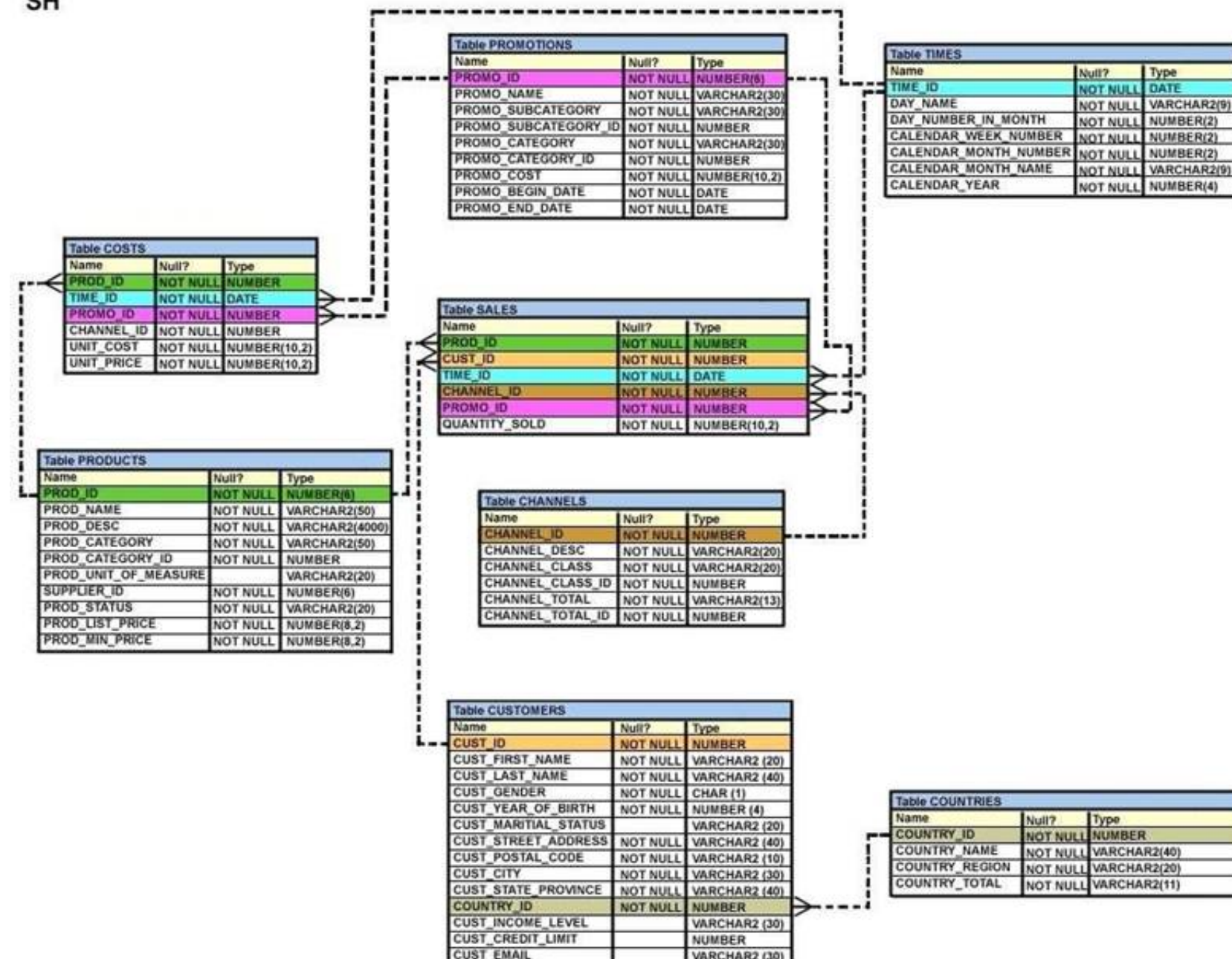
References:

<https://docs.oracle.com/database/121/CNCPT/transact.htm#CNCPT038>

NEW QUESTION 8

View the Exhibit and examine, the description for the SALES and CHANNELS tables. (Choose the best answer.)

SH



You issued this SQL statement:

```
INSERT INTO SALES VALUES (23, 2300, SYSDATE, (SELECT CAHNNEL_ID
FROM CHANNELS
WHERE CHANNEL_DESC='DIRECT SALES'), 12, 1, 500);
```

Which statement is true regarding the result?

- A. The statement will fail because the sub-query in the VALUES clause is not enclosed within single quotation marks.
- B. The statement will fail because a subquery cannot be used in a VALUES clause.
- C. The statement will execute and a new row will be inserted in the SALES table.
- D. The statement will fail because the VALUES clause is not required with the subquery.

Answer: C

NEW QUESTION 9

Which two statements are true regarding the EXISTS operator used in the correlated subqueries? (Choose two.)

- A. The outer query stops evaluating the result set of the inner query when the first value is found.
- B. It is used to test whether the values retrieved by the inner query exist in the result of the outer query.
- C. It is used to test whether the values retrieved by the outer query exist in the result set of the inner query.
- D. The outer query continues evaluating the result set of the inner query until all the values in the result set are processed.

Answer: AC

Explanation:

References:

<http://www.techonthenet.com/oracle/exists.php>

NEW QUESTION 10

Examine the business rule:

Each student can work on multiple projects and each project can have multiple students.

You need to design an Entity Relationship Model (ERD) for optimal data storage and allow for generating reports in this format:

STUDENT_ID FIRST_NAME LAST_NAME PROJECT_ID PROJECT_NAME PROJECT_TASK

Which two statements are true in this scenario?

- A. The ERD must have a 1:M relationship between the STUDENTS and PROJECTS entities.
- B. The ERD must have a M:M relationship between the STUDENTS and PROJECTS entities that must be resolved into 1:M relationships.
- C. STUDENT_ID must be the primary key in the STUDENTS entity and foreign key in the PROJECTS entity.
- D. PROJECT_ID must be the primary key in the PROJECTS entity and foreign key in the STUDENTS entity.
- E. An associative table must be created with a composite key of STUDENT_ID and PROJECT_ID, which is the foreign key linked to the STUDENTS and PROJECTS entities.

Answer: BE

Explanation:

References:

<http://www.oracle.com/technetwork/issue-archive/2011/11-nov/o61sql-512018.html>

NEW QUESTION 10

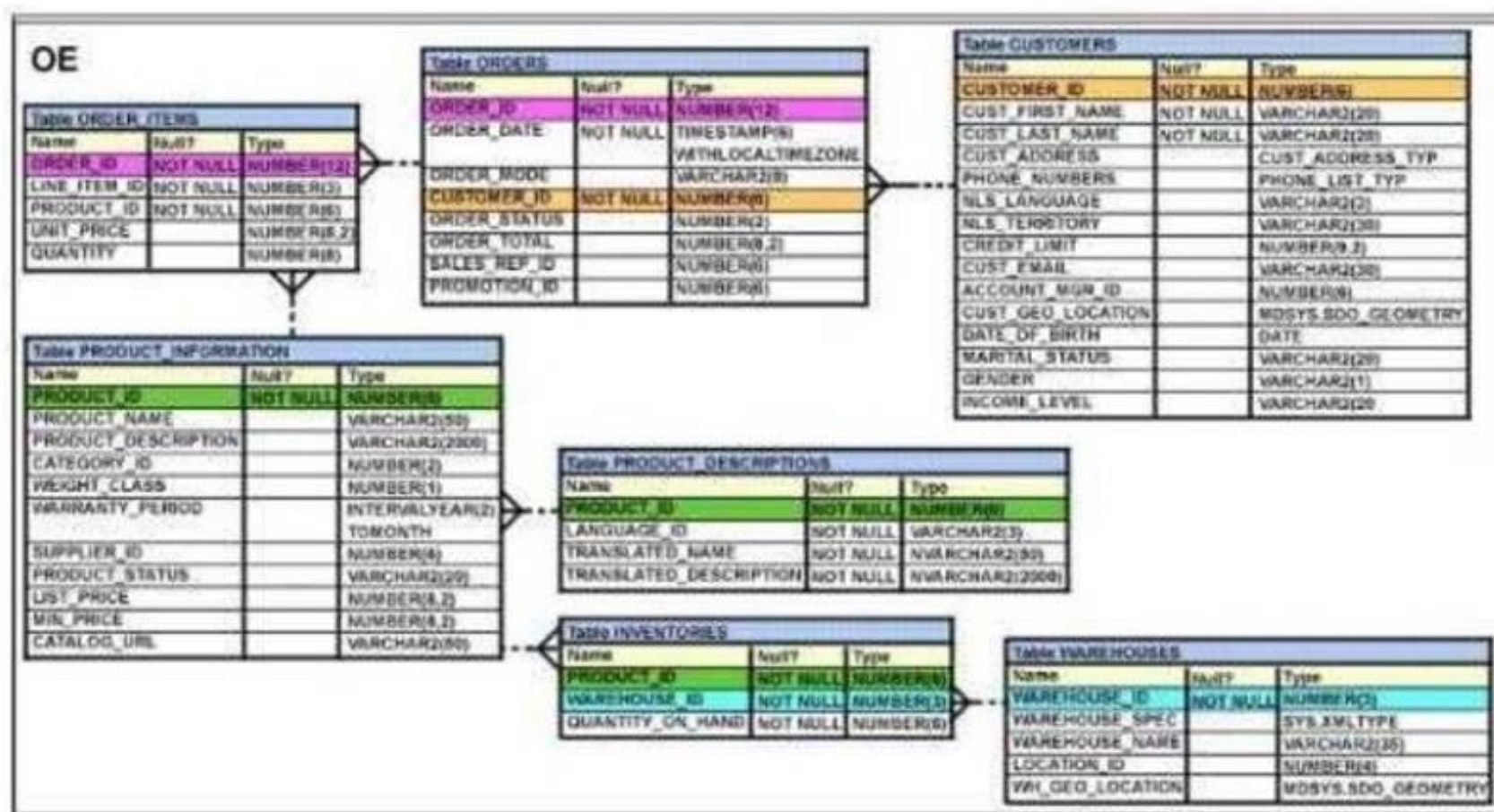
Which two statement are true regarding table joins available in the Oracle Database server? (Choose two.)

- A. You can use the ON clause to specify multiple conditions while joining tables.
- B. You can explicitly provide the join condition with a NATURAL JOIN.
- C. You can use the JOIN clause to join only two tables.
- D. You can use the USING clause to join tables on more than one column.

Answer: AD

NEW QUESTION 14

View the Exhibit and examine the structure of the PORDUCT_INFORMATION table. (Choose the best answer.)



PRODUCT_ID column is the primary key. You create an index using this command: SQL > CREATE INDEX upper_name_idx ON product_information(UPPER(product_name));
 No other indexes exist on the PRODUCT_INFORMATION table. Which query would use the UPPER_NAME_IDX index?

- A. SELECT product_id, UPPER(product_name) FROM product_information WHERE UPPER(product_name) = 'LASERPRO' OR list_price > 1000;
- B. SELECT UPPER(product_name) FROM product_information;
- C. SELECT UPPER(product_name) FROM product_information WHERE product_id = 2254;
- D. SELECT product_id FROM product_information WHERE UPPER(product_name) IN ('LASERPRO', 'CABLE');

Answer: D

NEW QUESTION 19

Evaluate the following CREATE TABLE commands:

CREATE TABLE orders

(ord_no NUMBER (2) CONSTRAINT ord_pk PRIMARY KEY,

ord_date DATE, cust_id NUMBER (4));

CREATE TABLE ord_items (ord_no NUMBER (2),

item_no NUMBER (3),

qty NUMBER (3) CHECK (qty BETWEEN 100 AND 200),

expiry_date DATE CHECK (expiry_date > SYSDATE), CONSTRAINT it_pk PRIMARY KEY (ord_no, item_no),

CONSTRAINT ord_fk FOREIGN KEY (ord_no) REFERENCES orders (ord_no)); Why would the ORD_ITEMS table not get created?

- A. SYSDATE cannot be used with the CHECK constraint.
- B. The BETWEEN clause cannot be used for the CHECK constraint.
- C. The CHECK constraint cannot be placed on columns having the DATE data type.
- D. ORD_NO and ITEM_NO cannot be used as a composite primary key because ORD_NO is also the FOREIGN KEY.

Answer: A

NEW QUESTION 24

View the exhibit and examine the descriptions of the DEPT and LOCATIONS tables.

DEPT		
Name	Null?	Type
DEPARTMENT_ID		NUMBER(4)
DEPARTMENT_NAME	NOT NULL	VARCHAR2(30)
MANAGER_ID		NUMBER(6)
LOCATION_ID		NUMBER(4)
CITY		VARCHAR2(30)

LOCATIONS		
Name	Null?	Type
LOCATION_ID	NOT NULL	NUMBER(4)
STREET_ADDRESS		VARCHAR2(40)
POSTAL_CODE		VARCHAR2(12)
CITY	NOT NULL	VARCHAR2(30)
STATE_PROVINCE		VARCHAR2(25)
COUNTRY_ID		CHAR(2)

You want to update the CITY column of the DEPT table for all the rows with the corresponding value in the CITY column of the LOCATIONS table for each department.

Which SQL statement would you execute to accomplish the task?

- A. UPDATE dept d SET city = ALL (SELECT city FROM locations l WHERE d.location_id = l.location_id);
- B. UPDATE dept d SET city = (SELECT city FROM locations l) WHERE d.location_id = l.location_id;
- C. UPDATE dept d SET city = ANY (SELECT city FROM locations l)

D. UPDATE dept dSET city = (SELECT cityFROM locations IWHERE d.location_id = l.location_id);

Answer: D

NEW QUESTION 26

Which statement is true regarding the default behavior of the ORDER BY clause?

- A. In a character sort, the values are case-sensitive.
- B. NULL values are not considered at all by the sort operation.
- C. Only those columns that are specified in the SELECT list can be used in the ORDER BY clause.
- D. Numeric values are displayed from the maximum to the minimum value if they have decimal positions.

Answer: A

NEW QUESTION 28

Which two partitioned table maintenance operations support asynchronous Global Index Maintenance in Oracle database 12c?

- A. ALTER TABLE SPLIT PARTITION
- B. ALTER TABLE MERGE PARTITION
- C. ALTER TABLE TRUNCATE PARTITION
- D. ALTER TABLE ADD PARTITION
- E. ALTER TABLE DROP PARTITION
- F. ALTER TABLE MOVE PARTITION

Answer: CE

NEW QUESTION 30

Examine the types and examples of relationship that follows: (Choose the best answer.)

- 1 One-to-one a) teacher to Student
- 2 One-to-many b) Employees to Manager
- 3 Many-to-one c) Person to SSN
- 4 Many-to-many d) Customers to Products

Which option indicates correctly matched relationships?

- A. 1-d, 2-b, 3-a, and 4-c
- B. 1-c, 2-d, 3-a, and 4-b
- C. 1-a, 2-b, 3-c, and 4-d
- D. 1-c, 2-a, 3-b, and 4-d

Answer: C

NEW QUESTION 32

Evaluate the following SQL statement:

```
SELECT product_name || 'it's not available for order' FROM product_information  
WHERE product_status = 'obsolete';
```

You received the following error while executing the above query: ERROR

ORA-01756: quoted string not properly terminated What would you do to execute the query successfully?

- A. Use Quote (q) operator and delimiter to allow the use of single quotation mark in the literal character string.
- B. Enclose the literal character string in the SELECT clause within the double quotation marks.
- C. Do not enclose the character literal string in the SELECT clause within the single quotation marks.
- D. Use escape character to negate the single quotation mark inside the literal character string in the SELECT clause.

Answer: A

Explanation:

References:

http://docs.oracle.com/cd/B19306_01/server.102/b14200/sql_elements003.htm

NEW QUESTION 35

Which two are the minimal requirements for a self-join? (Choose two.)

- A. Only equijoin conditions may be used in the query.
- B. Outer joins must not be used in the query.
- C. There must be a condition on which the self-join is performed.
- D. No other condition except the self-join may be specified.
- E. The table used for the self-join must have two different alias names in the query.

Answer: CE

NEW QUESTION 38

Which two statements are true regarding multiple-row subqueries? (Choose two.)

- A. They can contain group functions.
- B. They always contain a subquery within a subquery.
- C. They use the < ALL operator to imply less than the maximum.
- D. They can be used to retrieve multiple rows from a single table only.

E. They should not be used with the NOT IN operator in the main query if NULL is likely to be a part of the result of the subquery.

Answer: AE

NEW QUESTION 41

Which three statements are true about multiple-row subqueries?

- A. They can contain a subquery within a subquery.
- B. They can return multiple columns as well as rows.
- C. They cannot contain a subquery within a subquery.
- D. They can return only one column but multiple rows.
- E. They can contain group functions and GROUP BY and HAVING clauses.
- F. They can contain group functions and the GROUP BY clause, but not the HAVING clause.

Answer: ABE

NEW QUESTION 42

Which three statements are true regarding the usage of the WITH clause in complex correlated subqueries: (Choose three.)

- A. It can be used only with the SELECT clause.
- B. The WITH clause can hold more than one query.
- C. If the query block name and the table name are the same, then the table name takes precedence.
- D. The query name in the WITH clause is visible to other query blocks in the WITH clause as well as to the main query block

Answer: ABD

NEW QUESTION 45

Which two statements are true regarding constraints? (Choose two.)

- A. A constraint is enforced only for an INSERT operation on a table.
- B. A foreign key cannot contain NULL values.
- C. The column with a UNIQUE constraint can store NULLS.
- D. You can have more than one column in a table as part of a primary key.

Answer: CD

NEW QUESTION 47

Examine the commands used to create the DEPARTMENT_DETAILS and the COURSE-DETAILS tables: SQL> CREATE TABLE DEPARTMENT_DETAILS
DEPARTMENT_ID NUMBER PRIMARY KEY , DEPARTMENT_NAME VARCHAR2(50) ,
HOD VARCHAR2(50));

SQL> CREATE TABLE COURSE-DETAILS (COURSE_ID NUMBER PRIMARY KEY , COURSE_NAME VARCHAR2 (50) ,
DEPARTMENT_ID NUMBER REFERENCES DEPARTMENT_DETAIL

You want to generate a list of all department IDs along with any course IDs that may have been assigned to them.

Which SQL statement must you use?

- A. SELECT d.department_id, c.course_id FROM course_details c LEFT OUTER JOIN department_details d ON (c.department_id=d.department_id);
- B. SELECT d.department_id,
- C. course_id FROM department_details d RIGHT OUTER JOIN course_details c ON (c.department_id=d.department_id) ;
- D. SELECT d.department_id
- E. course_id FROM department_details d RIGHT OUTER JOIN course_details c ON (d.department_id);
- F. SELECT d.department_id, c.course_id FROM department_details d LEFT OUTER JOIN course_details c ON (d.department_id)= (DEPARTMENT_ID) ;

Answer: D

NEW QUESTION 51

Examine the structure of the MEMBERS table. NameNull?Type

----- MEMBER_ID NOT NULL VARCHAR2 (6)

FIRST_NAME VARCHAR2 (50)

LAST_NAME NOT NULL VARCHAR2 (50)

ADDRESS VARCHAR2 (50)

CITY VARCHAR2 (25)

STATE NOT NULL VARCHAR2 (3)

Which query can be used to display the last names and city names only for members from the states MO and MI?

- A. SELECT last_name, city FROM members WHERE state = 'MO' AND state = 'MI';
- B. SELECT last_name, city FROM members WHERE state LIKE 'M%';
- C. SELECT last_name, city FROM members WHERE state IN ('MO', 'MI');
- D. SELECT DISTINCT last_name, city FROM members WHERE state = 'MO' OR state = 'MI';

Answer: C

NEW QUESTION 56

A non-correlated subquery can be defined as . (Choose the best answer.)

- A. A set of one or more sequential queries in which generally the result of the inner query is used as the search value in the outer query.
- B. A set of sequential queries, all of which must return values from the same table.
- C. A set of sequential queries, all of which must always return a single value.

D. A SELECT statement that can be embedded in a clause of another SELECT statement only.

Answer: A

NEW QUESTION 60

Which statement is true about SQL query processing in an Oracle database instance? (Choose the best answer.)

- A. During parsing, a SQL statement containing literals in the WHERE clause that has been executed by any session and which is cached in memory, is always reused for the current execution.
- B. During executing, the oracle server may read data from storage if the required data is not already in memory.
- C. During row source generation, rows that satisfy the query are retrieved from the database and stored in memory.
- D. During optimization, execution plans are formulated based on the statistics gathered by the database instance, and the lowest cost plan is selected for execution.

Answer: B

NEW QUESTION 65

Examine the structure of the MEMBERS table: (Choose the best answer.)

NAME	NULL?	TYPE
MEMBER_ID	NOT NULL	NUMBER(6)
FIRST_NAME		VARCHAR2(50)
LAST_NAME	NOT NULL	VARCHAR2(50)
ADDRESS		VARCHAR2(50)
CITY		VARCHAR2(25)
STATE		VARCHAR2(3)

Examine the SQL statement:

```
SQL > SELECT city, last_name LNAME FROM MEMBERS ORDER BY 1, LNAME DESC;
```

What would be the result execution?

- A. It displays all cities in descending order, within which the last names are further sorted in descending order.
- B. It fails because a column alias cannot be used in the ORDER BY clause.
- C. It fails because a column number and a column alias cannot be used together in the ORDER BY clause.
- D. It displays all cities in ascending order, within which the last names are further sorted in descending order.

Answer: D

NEW QUESTION 67

The user SCOTT who is the owner of ORDERS and ORDER_ITEMS tables issues the following GRANT command:

```
GRANT ALL
```

```
ON orders, order_items TO PUBLIC;
```

What correction needs to be done to the above statement?

- A. PUBLIC should be replaced with specific usernames.
- B. ALL should be replaced with a list of specific privileges.
- C. WITH GRANT OPTION should be added to the statement.
- D. Separate GRANT statements are required for ORDERS and ORDER_ITEMS tables.

Answer: D

Explanation:

References:

<http://docs.oracle.com/javadb/10.8.3.0/ref/rrefsqljgrant.html>

NEW QUESTION 71

Which three statements are true regarding subqueries? (Choose three.)

- A. The ORDER BY Clause can be used in a subquery.
- B. A subquery can be used in the FROM clause of a SELECT statement.
- C. If a subquery returns NULL, the main query may still return rows.
- D. A subquery can be placed in a WHERE clause, a GROUP BY clause, or a HAVING clause.
- E. Logical operators, such as AND, OR and NOT, cannot be used in the WHERE clause of a subquery.

Answer: ABC

NEW QUESTION 76

View and Exhibit and examine the structure and data in the INVOICE table. (Choose two.)

Name	Null	Type
INV_NO	NOT NULL	NUMBER(3)
INV_DATE		DATE
INV_AMT		NUMBER(10,2)

Which two statements are true regarding data type conversion in query expressions?

- A. inv_date = '15-february-2008' :uses implicit conversion
- B. inv_amt = '0255982' : requires explicit conversion
- C. inv_date > '01-02-2008' : uses implicit conversion
- D. CONCAT(inv_amt, inv_date) : requires explicit conversion
- E. inv_no BETWEEN '101' AND '110' : uses implicit conversion

Answer: AE

NEW QUESTION 78

Examine the structure of the PROMOTIONS table: (Choose the best answer.)

NAME	NULL?	TYPE
PROMO_ID	NOT NULL	NUMBER(6)
PROMO_NAME	NOT NULL	VARCHAR2(30)
PROMO_CATEGORY	NOT NULL	VARCHAR2(30)
PROMO_COST	NOT NULL	NUMBER(10,2)

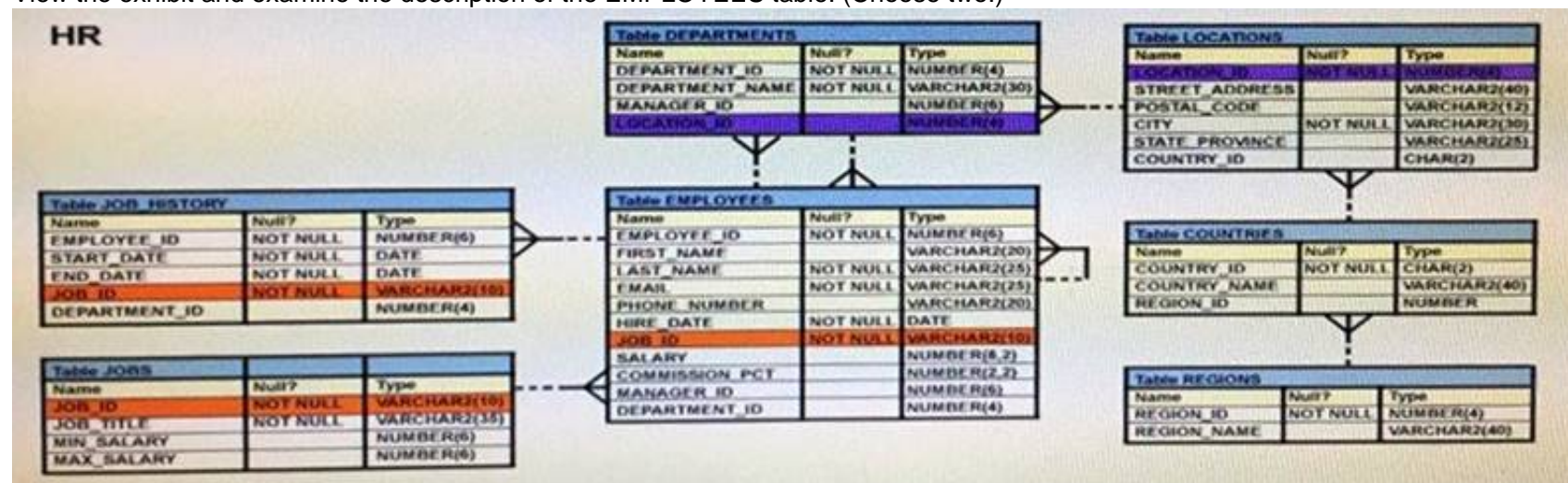
Management requires a report of unique promotion costs in each promotion category. Which query would satisfy this requirement?

- A. SELECT DISTINCT promo_category, promo_cost FROM promotions ORDER BY 1
- B. SELECT promo_category, DISTINCT promo_cost FROM promotions
- C. SELECT DISTINCT promo_cost, promo_category FROM promotions
- D. SELECT DISTINCT promo_cost, DISTINCT promo_category FROM promotions;

Answer: A

NEW QUESTION 81

View the exhibit and examine the description of the EMPLOYEES table. (Choose two.)



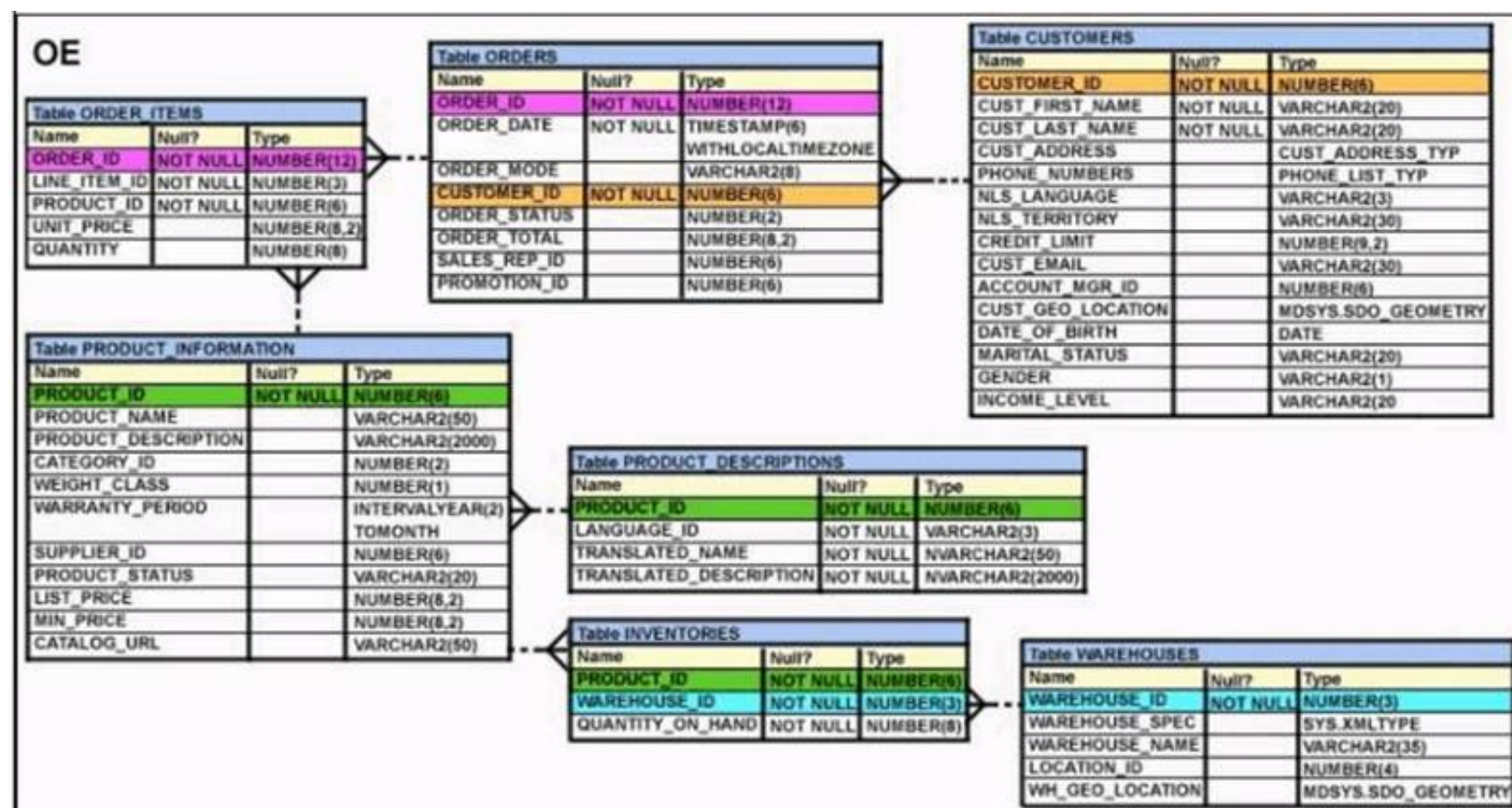
You executed this SQL statement: SELECT first_name, department_id, salary FROM employees ORDER BY department_id, first_name, salary desc; Which two statements are true regarding the result?

- A. The values in the SALARY column would be returned in descending order for all employees having the same value in the DEPARTMENT_ID and FIRST_NAME column.
- B. The values in the FIRST_NAME column would be returned in ascending order for all employees having the same value in the DEPARTMENT_ID column.
- C. The values in the SALARY column would be returned in descending order for all employees having the same value in the DEPARTMENT_ID column.
- D. The values in the all columns would be returned in descending order.
- E. The values in the FIRST_NAME column would be returned in descending order for all employees having the same value in the DEPARTMENT_ID column.

Answer: AB

NEW QUESTION 85

View the Exhibit and examine the structure of the ORDERS table. The ORDER_ID column is the PRIMARY KEY in the ORDERS table.



Evaluate the following CREATE TABLE command:

```
CREATE TABLE new_orders(ord_id, ord_date DEFAULT SYSDATE, cus_id) AS
```

```
SELECT order_id, order_date, customer_id FROM orders;
```

Which statement is true regarding the above command?

- A. The NEW_ODRDERS table would not get created because the DEFAULT value cannot be specified in the column definition.
- B. The NEW_ODRDERS table would get created and only the NOT NULL constraint defined on the specified columns would be passed to the new table.
- C. The NEW_ODRDERS table would not get created because the column names in the CREATE TABLE command and the SELECT clause do not match.
- D. The NEW_ODRDERS table would get created and all the constraints defined on the specified columns in the ORDERS table would be passed to the new table.

Answer: B

NEW QUESTION 89

View the exhibit and examine the structures of the EMPLOYEES and DEPARTMENTS tables. EMPLOYEES

Name Null? Type

```
----- EMPLOYEE_ID NOT NULL NUMBER(6) FIRST_NAME VARCHAR2(20) LAST_NAME NOT NULL VARCHAR2(25) HIRE_DATE NOT NULL DATE JOB_ID NOT NULL VARCHAR2(10) SALARY NUMBER(10,2) COMMISSION NUMBER(6,2) MANAGER_ID NUMBER(6)
```

DEPARTMENT_ID NUMBER(4) DEPARTMENTS

Name Null? Type

```
----- DEPARTMENT_ID NOT NULL NUMBER(4) DEPARTMENT_NAME NOT NULL VARCHAR2(30) MANAGER_ID NUMBER(6) LOCATION_ID NUMBER(4)
```

You want to update EMPLOYEES table as follows: You issue the following command:

```
SQL> UPDATE employees SET department_id = (SELECT department_id FROM departments
```

```
WHERE location_id = 2100), (salary, commission) =
```

```
(SELECT 1.1*AVG(salary), 1.5*AVG(commission) FROM employees, departments
```

```
WHERE departments.location_id IN(2900, 2700, 2100))
```

```
WHERE department_id IN (SELECT department_id FROM departments WHERE location_id = 2900 OR location_id = 2700; What is outcome?
```

- A. It generates an error because multiple columns (SALARY, COMMISSION) cannot be specified together in an UPDATE statement.
- B. It generates an error because a subquery cannot have a join condition in a UPDATE statement.
- C. It executes successfully and gives the desired update
- D. It executes successfully but does not give the desired update

Answer: D

NEW QUESTION 91

Examine the structure of the EMPLOYEES table. (Choose two.)

Name	Null?	Type
EMPLOYEE_ID	NOT NULL	NUMBER (6)
FIRST_NAME		VARCHAR2 (20)
LAST_NAME	NOT NULL	VARCHAR2 (25)
EMAIL	NOT NULL	VARCHAR2 (25)
PHONE_NUMBER		VARCHAR2 (20)
HIRE_DATE	NOT NULL	DATE
JOB_ID	NOT NULL	VARCHAR2 (10)
SALARY		NUMBER (8, 2)
COMMISSION_PCT		NUMBER (2, 2)
MANAGER_ID		NUMBER (6)
DEPARTMENT_ID		NUMBER (4)

You must display the maximum and minimum salaries of employees hired 1 year ago. Which two statements would provide the correct output?

- A. SELECT MIN(Salary) minsal, MAX(salary) maxsalFROM employeesWHERE hire_date < SYSDATE-365GROUP BY MIN(salary), MAX(salary);
- B. SELECT minsal, maxsalFROM (SELECT MIN(salary) minsal, MAX(salary) maxsal FROM employeesWHERE hire_date < SYSDATE-365)GROUP BY maxsal, minsal;
- C. SELECT minsal, maxsalFROM (SELECT MIN(salary) minsal, MAX(salary) maxsal FROM employeesWHERE hire_date < SYSDATE-365GROUP BY MIN(salary), MAX(salary);
- D. SELECT MIN(Salary), MAX(salary)FROM (SELECT salary FROM employeesWHERE hire_date < SYSDATE-365);

Answer: BD

NEW QUESTION 92

Examine the structure of the SALES table. (Choose two.)

NAME	NULL?	TYPE
PRODUCT_ID	NOT NULL	NUMBER(10)
CUSTOMER_ID	NOT NULL	VARCHAR2(10)
TIME_ID	NOT NULL	DATE
CHANNEL_ID	NOT NULL	NUMBER(5)
PROMO_ID	NOT NULL	NUMBER(5)
QUANTITY_SOLD	NOT NULL	NUMBER(10, 2)
PRICE		NUMBER(10, 2)
AMOUNT_SOLD	NOT NULL	NUMBER(10, 2)

Examine this statement:

```
SQL > CREATE TABLE sales1 (prod_id, cust_id, quantity_sold, price) AS
SELECT product_id, customer_id, quantity_sold, price FROM sales
WHERE 1 = 2;
```

Which two statements are true about the SALES1 table?

- A. It will not be created because the column-specified names in the SELECT and CREATE TABLE clauses do not match.
- B. It will have NOT NULL constraints on the selected columns which had those constraints in the SALES table.
- C. It will not be created because of the invalid WHERE clause.
- D. It is created with no rows.
- E. It has PRIMARY KEY and UNIQUE constraints on the selected columns which had those constraints in the SALES table.

Answer: BD

NEW QUESTION 96

Which two statements are true regarding the GROUP BY clause in a SQL statement? (Choose two.)

- A. You can use column alias in the GROUP BY clause.
- B. Using the WHERE clause after the GROUP BY clause excludes the rows after creating groups.
- C. The GROUP BY clause is mandatory if you are using an aggregate function in the SELECT clause.
- D. Using the WHERE clause before the GROUP BY clause excludes the rows before creating groups.
- E. If the SELECT clause has an aggregate function, then those individual columns without an aggregate function in the SELECT clause should be included in the GROUP BY cause.

Answer: DE

NEW QUESTION 97

View the Exhibit and examine the data in the PRODUCT_INFORMATION table.

PRODUCT_INFORMATION				
PDT_ID	SUP_ID	PDT_STATUS	LIST_PRICE	MIN_PRICE
1797	102094	orderable	349	288
2254	102071	obsolete	453	371
2382	102050	under development	850	731
2459	102099	under development	699	568
3127	102087	orderable	498	444
3353	102071	obsolete	489	413
3354	102066	orderable	543	478

Which two tasks would require subqueries? (Choose two.)

- A. displaying all the products whose minimum list prices are more than average list price of products having the status orderable
- B. displaying the total number of products supplied by supplier 102071 and having product status OBSOLETE
- C. displaying the number of products whose list prices are more than the average list price
- D. displaying all supplier IDs whose average list price is more than 500
- E. displaying the minimum list price for each product status

Answer: AC

NEW QUESTION 99

Which two statements are true regarding subqueries? (Choose two.)

- A. A subquery can appear on either side of a comparison operator.
- B. Only two subqueries can be placed at one level.
- C. A subquery can retrieve zero or more rows.
- D. A subquery can be used only in SQL query statements.
- E. There is no limit on the number of subquery levels in the WHERE clause of a SELECT statement.

Answer: AC

NEW QUESTION 101

Which statement is true regarding the default behaviour of the ORDER by clause?

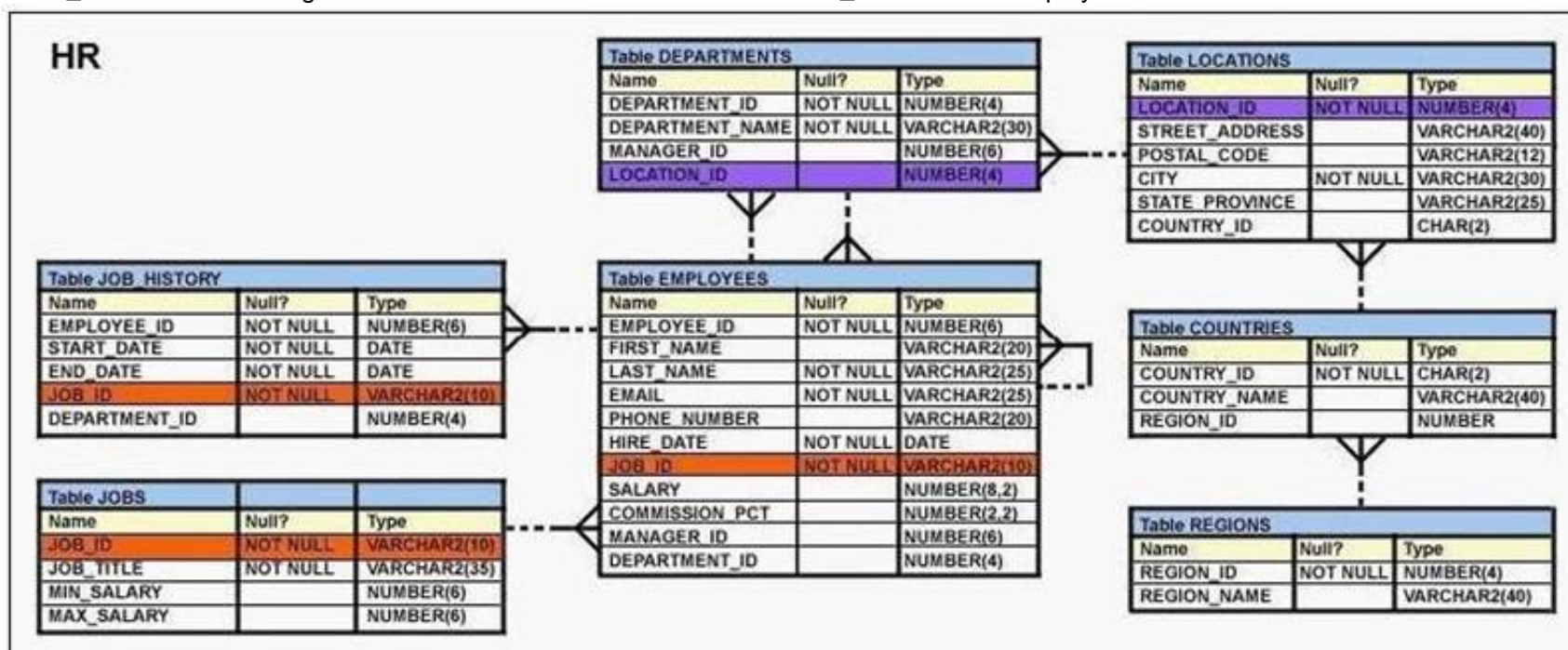
- A. Numeric values are displayed in descending order if they have decimal positions.
- B. Only columns that are specified in the SELECT list can be used in the ORDER by clause.
- C. In a character sort, the values are case-sensitive.
- D. NULLs are not including in the sort operation

Answer: C

NEW QUESTION 103

View the Exhibit and examine the structure of the EMPLOYEES table.

You want to display all employees and their managers having 100 as the MANAGER_ID. You want the output in two columns: the first column would have the LAST_NAME of the managers and the second column would have LAST_NAME of the employees.



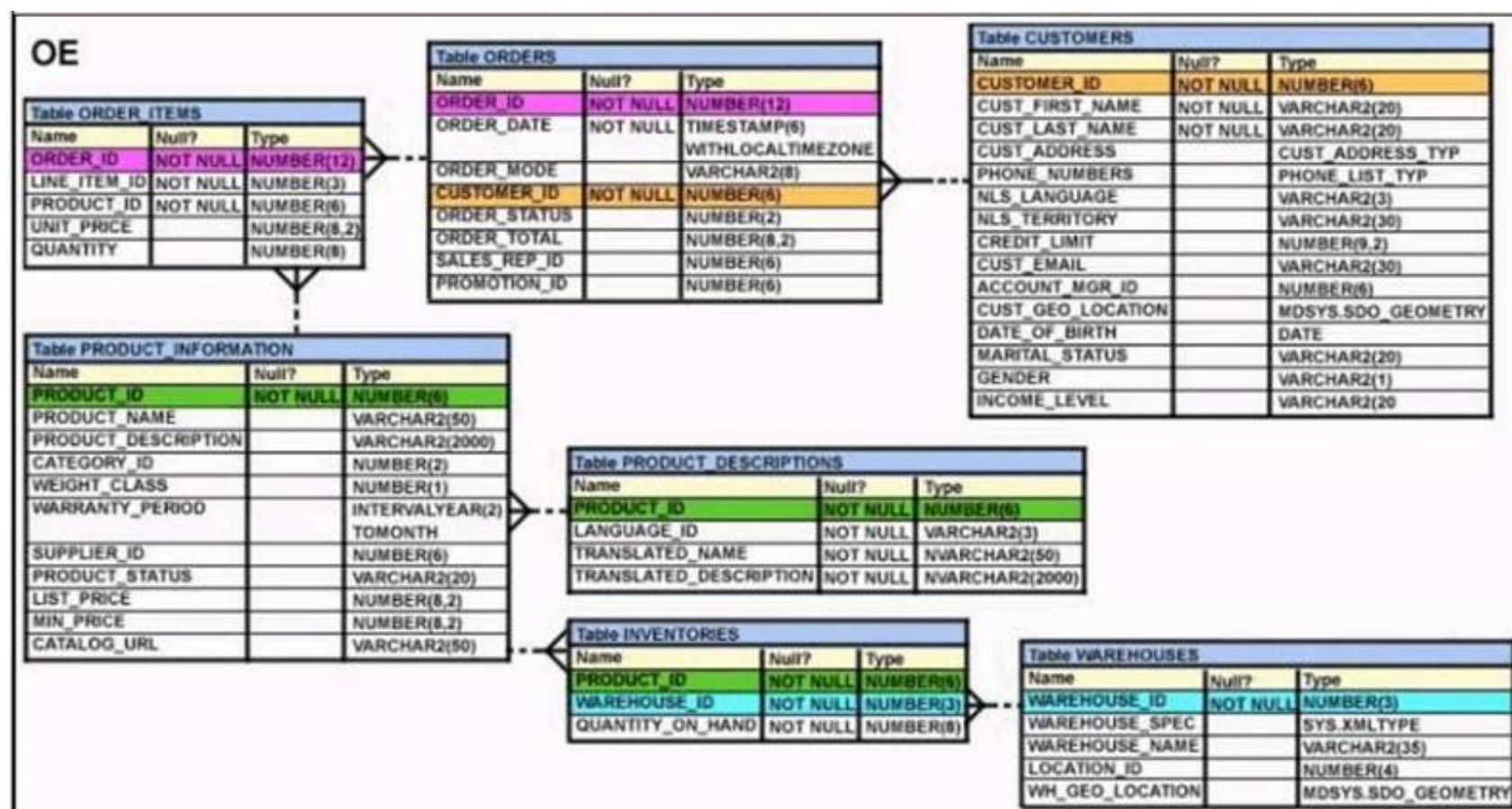
Which SQL statement would you execute?

- A. SELECT m.last_name "Manager", e.last_name "Employee" FROM employees m JOIN employees e ON m.employee_id = e.manager_id WHERE m.manager_id=100;
- B. SELECT m.last_name "Manager", e.last_name "Employee" FROM employees m JOIN employees e ON m.employee_id = e.manager_id WHERE e.manager_id=100;
- C. SELECT m.last_name "Manager", e.last_name "Employee" FROM employees m JOIN employees e ON e.employee_id = m.manager_id WHERE m.manager_id=100;
- D. SELECT m.last_name "Manager", e.last_name "Employee" FROM employees m JOIN employees e WHERE m.employee_id = e.manager_id AND e.manager_id=100;

Answer: B

NEW QUESTION 106

View the Exhibit and examine the description of the ORDERS table. (Choose two.)



Which two WHERE clause conditions demonstrate the correct usage of conversion functions?

- A. WHERE Order_date IN (TO_DATE('OCT 21 2003', 'MON DD YYYY'), TO_CHAR('NOV 21 2003', 'MON DD YYYY'))
- B. WHERE Order_date > TO_CHAR(ADD_MONTHS(SYSDATE, 6), 'MON DD YYYY')
- C. WHERE TO_CHAR(Order_date, 'MON DD YYYY') = 'JAN 20 2003'
- D. WHERE Order_date > (TO_DATE('JUL 10 2006', 'MON DD YYYY')

Answer: CD

NEW QUESTION 111

Examine the structure of the CUSTOMERS table: (Choose two.)

NAME	NULL?	TYPE
CUSTNO	NOT NULL	NUMBER(3)
CUSTNAME	NOT NULL	VARCHAR2(25)
CUSTADDRESS		VARCHAR2(35)
CUST_CREDIT_LIMIT		NUMBER(5)

CUSTNO is the PRIMARY KEY.

You must determine if any customers' details have been entered more than once using a different CUSTNO, by listing all duplicate names.

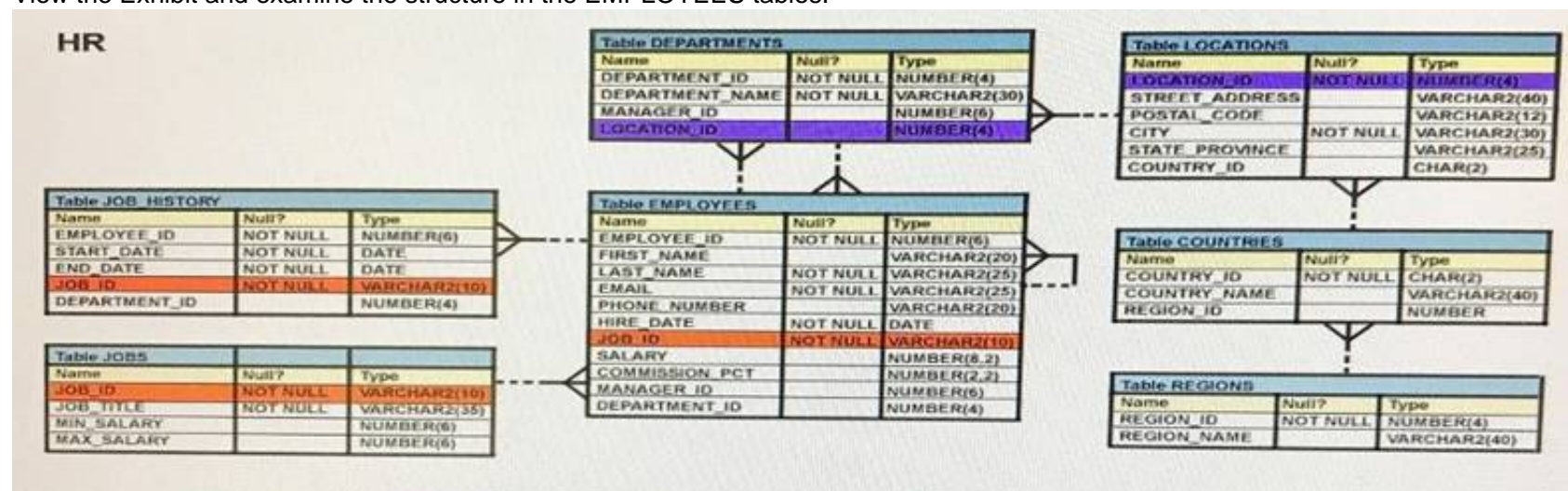
Which two methods can you use to get the required result?

- A. Subquery
- B. Self-join
- C. Full outer-join with self-join
- D. Left outer-join with self-join
- E. Right outer-join with self-join

Answer: AB

NEW QUESTION 113

View the Exhibit and examine the structure in the EMPLOYEES tables.



Evaluate the following SQL statement: SELECT employee_id, department_id FROM employees WHERE department_id= 50 ORDER BY department_id UNION SELECT employee_id, department_id FROM employees

WHERE department_id=90 UNION
 SELECT employee_id, department_id
 FROM employees
 WHERE department_id=10;
 What would be the outcome of the above SQL statement?

- A. The statement would not execute because the positional notation instead of the column name should be used with the ORDER BY clause.
- B. The statement would execute successfully and display all the rows in the ascending order of DEPARTMENT_ID.
- C. The statement would execute successfully but it will ignore the ORDER BY clause and display the rows in random order.
- D. The statement would not execute because the ORDER BY clause should appear only at the end of the SQL statement, that is, in the last SELECT statement.

Answer: D

NEW QUESTION 115

See the Exhibit and examine the structure of the PROMOTIONS table:

Table PROMOTIONS		
Name	Null?	Type
PROMO_ID	NOT NULL	NUMBER(6)
PROMO_NAME	NOT NULL	VARCHAR2(30)
PROMO_SUBCATEGORY	NOT NULL	VARCHAR2(30)
PROMO_SUBCATEGORY_ID	NOT NULL	NUMBER
PROMO_CATEGORY	NOT NULL	VARCHAR2(30)
PROMO_CATEGORY_ID	NOT NULL	NUMBER
PROMO_COST	NOT NULL	NUMBER(10,2)
PROMO_BEGIN_DATE	NOT NULL	DATE
PROMO_END_DATE	NOT NULL	DATE

Using the PROMOTIONS table,
 you need to find out the average cost for all promos in the range \$0-2000 and \$2000-5000 in category A.
 You issue the following SQL statements:

```
SQL>SELECT AVG(CASE
                WHEN promo_cost BETWEEN 0 AND 2000 AND promo_category='A'
                THEN promo_cost
                ELSE null END) "CAT_2000A",
        AVG(CASE
                WHEN promo_cost BETWEEN 2001 AND 5000 AND promo_category='A'
                THEN promo_cost
                ELSE null END) "CAT_5000A"
FROM promotions;
```

What would be the outcome?

- A. It generates an error because multiple conditions cannot be specified for the WHEN clause.
- B. It executes successfully and gives the required result.
- C. It generates an error because CASE cannot be used with group functions.
- D. It generates an error because NULL cannot be specified as a return value.

Answer: B

Explanation:

CASE Expression

Facilitates conditional inquiries by doing the work of an IF-THEN-ELSE statement:

```
CASE expr WHEN comparison_expr1 THEN return_expr1 [WHEN comparison_expr2 THEN return_expr2
WHEN comparison_exprn THEN return_exprn ELSE else_expr]
END
```

NEW QUESTION 117

Which three statements are true about the ALTER TABLE....DROP COLUMN.... command?

- A. A column can be dropped only if it does not contain any data.
- B. A column can be dropped only if another column exists in the table.
- C. A dropped column can be rolled back.
- D. The column in a composite PRIMARY KEY with the CASCADE option can be dropped.
- E. A parent key column in the table cannot be dropped.

Answer: BDE

NEW QUESTION 122

Which statement is true about Data Manipulation Language (DML)?

- A. DML automatically disables foreign key constraints when modifying primary key values in the parent table.
- B. Each DML statement forms a transaction by default.
- C. A transaction can consist of one or more DML statements.
- D. DML disables foreign key constraints when deleting primary key values in the parent table, only when the ON DELETE CASCADE option is set for the foreign key constraint.

Answer: C

NEW QUESTION 126

View the exhibit and examine the data in ORDERS_MASTER and MONTHLY_ORDERS tables.

ORDERS_MASTER ORDER_ID ORDER_TOTAL

1
1000
2
2000
3
3000
4

MONTHLY_ORDERS ORDER_ID ORDER_TOTAL

2
2500
3

Evaluate the following MERGE statement: MERGE INTO orders_master o

USING monthly_orders m ON (o.order_id = m.order_id) WHEN MATCHED THEN

UPDATE SET o.order_total = m.order_total DELETE WHERE (m.order_total IS NULL) WHEN NOT MATCHED THEN

INSERT VALUES (m.order_id, m.order_total)

What would be the outcome of the above statement?

- A. The ORDERS_MASTER table would contain the ORDER_IDs 1, 2, 3 and 4.
- B. The ORDERS_MASTER table would contain the ORDER_IDs 1, 2 and 4.
- C. The ORDERS_MASTER table would contain the ORDER_IDs 1, 2 and 3.
- D. The ORDERS_MASTER table would contain the ORDER_IDs 1 and 2.

Answer: B

Explanation:

References:

https://docs.oracle.com/cd/B28359_01/server.111/b28286/statements_9016.htm

NEW QUESTION 130

Which statement is true regarding external tables?

- A. The CREATE TABLE AS SELECT statement can be used to upload data into regular table in the database from an external table.
- B. The data and metadata for an external table are stored outside the database.
- C. The default REJECT LIMIT for external tables is UNLIMITED.
- D. ORACLE_LOADER and ORACLE_DATAPUMP have exactly the same functionality when used with an external table.

Answer: A

Explanation:

References:

https://docs.oracle.com/cd/B28359_01/server.111/b28310/tables013.htm

NEW QUESTION 132

Which two statements are true regarding working with dates? (Choose two.)

- A. The RR date format automatically calculates the century from the SYSDATE function but allows the session user to enter the century.
- B. The RR date format automatically calculates the century from the SYSDATE function and does not allow a session user to enter the century.
- C. The default internal storage of dates is in character format.
- D. The default internal storage of dates is in numeric format.

Answer: AD

NEW QUESTION 137

You notice a performance change in your production Oracle 12c database. You want to know which change caused this performance difference. Which method or feature should you use?

- A. Compare Period ADDM report.
- B. AWR Compare Period report.
- C. Active Session History (ASH) report.
- D. Taking a new snapshot and comparing it with a preserved snapshot.

Answer: B

NEW QUESTION 139

Examine the structure of the PROGRAMS table:

Name	Null?	Type
-----	-----	-----
PROG_ID	NOT NULL	NUMBER (3)
PROG_COST		NUMBER (8, 2)
START_DATE	NOT NULL	DATE
END_DATE		DATE

Which two SQL statements would execute successfully?

- A. SELECT NVL (ADD_MONTHS (END_DATE,1) SYSDATE) FROM programs;
- B. SELECT TO_DATE (NVL (SYSDATE-END_DATE, SYSDATE)) FROM programs;
- C. SELECT NVL (MONTHS_BETWEEN (start_date, end_date), 'Ongoing') FROM programs;
- D. SELECT NVL (TO_CHAR (MONTHS_BETWEEN (start-date, end_date)), 'Ongoing') FROM programs

Answer: AD

NEW QUESTION 141

Which two statements are true regarding roles? (Choose two.)

- A. A role can be granted to itself.
- B. A role can be granted to PUBLIC.
- C. A user can be granted only one role at any point of time.
- D. The REVOKE command can be used to remove privileges but not roles from other users.
- E. Roles are named groups of related privileges that can be granted to users or other roles.

Answer: BE

Explanation:

References:

http://docs.oracle.com/cd/E25054_01/network.1111/e16543/authorization.htm#autold28

NEW QUESTION 142

You issued this command:

CHOOSE THREE

SQL > DROP TABLE employees; Which three statements are true?

- A. Sequences used in the EMPLOYEES table become invalid.
- B. If there is an uncommitted transaction in the session, it is committed.
- C. All indexes and constraints defined on the table being dropped are also dropped.
- D. The space used by the EMPLOYEES table is always reclaimed immediately.
- E. The EMPLOYEES table can be recovered using the ROLLBACK command.
- F. The EMPLOYEES table may be moved to the recycle bin.

Answer: BCF

NEW QUESTION 145

View the Exhibit and examine the data in the employees table.

EMPLOYEES			
ENAME	HIREDATE	SAL	COMM
-----	-----	-----	-----
SMITH	17-DEC-00	800	
ALLEN	20-FEB-99	1600	300
WARD	22-FEB-95	1250	500
JONES	02-APR-98	2975	
MARTIN	28-SEP-99	1250	1400
BLAKE	01-MAY-97	2850	

You want to generate a report showing the total compensation paid to each employee to date. You issue the following query:

```
SQL>SELECT ename ||' joined on '|| hiredate ||
', the total compensation paid is '||
TO_CHAR (ROUND (ROUND (SYSDATE-hiredate)/365) * sal + comm)
"COMPENSATION UNTIL DATE"
FROM employees;
```

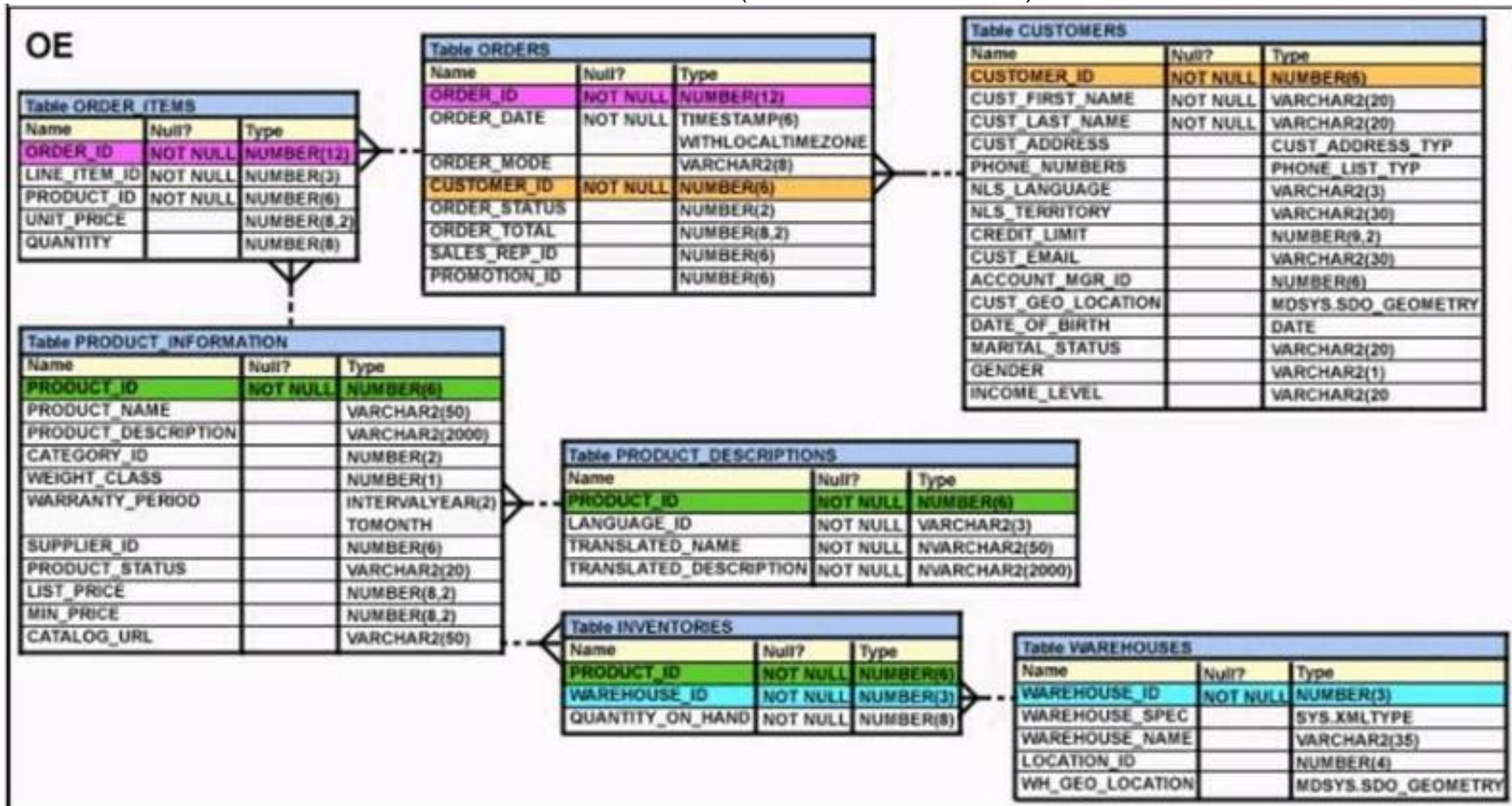
What is the outcome?

- A. It executes successfully but does not give the correct output.
 B. It generates an error because the concatenation operator can be used to combine only two items.
 C. It generates an error because the usage of the round function in the expression is not valid
 D. It generates an error because the alias is not valid.
 E. It executes successfully and gives the correct output.

Answer: A

NEW QUESTION 146

View the Exhibit and examine the structure of the ORDERS table. (Choose the best answer.)



You must select ORDER_ID and ORDER_DATE for all orders that were placed after the last order placed by CUSTOMER_ID 101. Which query would give you the desired result?

- A. SELECT order_id, order_date FROM orders WHERE order_date > ANY(SELECT order_date FROM orders WHERE customer_id = 101);
 B. SELECT order_id, order_date FROM orders WHERE order_date > ALL(SELECT MAX(order_date) FROM orders) AND customer_id = 101;
 C. SELECT order_id, order_date FROM orders WHERE order_date > ALL(SELECT order_date FROM orders WHERE customer_id = 101);
 D. SELECT order_id, order_date FROM orders WHERE order_date > IN(SELECT order_date FROM orders WHERE customer_id = 101);

Answer: C

NEW QUESTION 149

Which two statements are true regarding single row functions? (Choose two.)

- A. MOD : returns the quotient of a division.
 B. TRUNC : can be used with NUMBER and DATE values.
 C. CONCAT : can be used to combine any number of values.
 D. SYSDATE : returns the database server current date and time.
 E. INSTR : can be used to find only the first occurrence of a character in a string.
 F. TRIM : can be used to remove all the occurrences of a character from a string.

Answer: BD

NEW QUESTION 150

Which two statements are true regarding the execution of the correlated subqueries? (Choose two.)

- A. The nested query executes after the outer query returns the row.
 B. The nested query executes first and then the outer query executes.
 C. The outer query executes only once for the result returned by the inner query.
 D. Each row returned by the outer query is evaluated for the results returned by the inner query.

Answer: AD

NEW QUESTION 153

.....

Thank You for Trying Our Product

We offer two products:

1st - We have Practice Tests Software with Actual Exam Questions

2nd - Questions and Answers in PDF Format

1Z0-071 Practice Exam Features:

- * 1Z0-071 Questions and Answers Updated Frequently
- * 1Z0-071 Practice Questions Verified by Expert Senior Certified Staff
- * 1Z0-071 Most Realistic Questions that Guarantee you a Pass on Your First Try
- * 1Z0-071 Practice Test Questions in Multiple Choice Formats and Updates for 1 Year

100% Actual & Verified — Instant Download, Please Click
[Order The 1Z0-071 Practice Test Here](#)