

Exam Questions 70-740

Installation, Storage, and Compute with Windows Server 2016

<https://www.2passeasy.com/dumps/70-740/>



NEW QUESTION 1

You have a server that runs Windows Server 2016 Standard.

You create a new three-way mirror storage space. You format the storage space by using ReFS.

Which two features can you use on the new storage space? Each correct answer presents a complete solution.

- A. file and folder permissions
- B. disk quotas
- C. Encrypting File System (EFS)
- D. long file names
- E. Data Deduplication

Answer: AE

NEW QUESTION 2

You have a server named Server1 that runs Windows Server 2016 and has the File and Storage Services server role installed. Server1 has an ReFS-formatted volume named Volume1 that is 512 GB. Volume1 is mounted as C:\App1\temp. You need to ensure that you can enable deduplication of Volume1. What should you do?

- A. Initialize the physical disk that contains Volume1.
- B. Install a Windows feature.
- C. Format Volume1.
- D. Unmount Volume1.

Answer: B

NEW QUESTION 3

You have a server named Server 1 that runs Windows Server 2016 Window, Defender is enabled on Server1.

Server1 runs an application named App that stores various types of files in Microsoft OneDrive for Business, Microsoft OneDrive, and Microsoft SharePoint Online.

Appt also Interacts with several local services,

You need to prevent Windows Defender from scanning any files opened by Appl. Should you do on Server1?

- A. Run the Set-ExecutionPolicy cmdlet
- B. Form the Windows Defender settings, configure a file exclusion.
- C. From the Windows Defender settings, configure a process exclusion.
- D. Modify the cloud-based protection settings in Windows Defender.

Answer: B

Explanation:

References:

<https://www.windowscentral.com/how-exclude-files-and-folders-windows-defender-antivirus-scans>

NEW QUESTION 4

HOTSPOT

Your network contains an Active Directory domain named contoso.com. The domain contains a DNS server named Server1

You enable Response Rate Limiting on Server1.

You need to prevent Response Rate Limiting from applying to hosts that reside on the network of 10.0.0.0/24.

Which cmdlets should you run? To answer, select the appropriate options in the answer area

First cmdlet to run:

Add-DnsServerClientSubnet
Enable-DnsServerPolicy
Set-DnsServerResponseRateLimiting
Set-DnsServerResponseRateLimitingExceptionlist

Second cmdlet to run:

Add- DnsServerResponseRateLimitingExceptionlist
Add-DnsServerQueryResolutionPolicy
Add-DnsServerZoneScope
Set-DnsServerDsSetting

- A. Mastered
- B. Not Mastered

Answer: A

Explanation:

First cmdlet to run:

▼

Add-DnsServerClientSubnet

Enable-DnsServerPolicy

Set-DnsServerResponseRateLimiting

Set-DnsServerResponseRateLimitingExceptionlist

Second cmdlet to run:

▼

Add- DnsServerResponseRateLimitingExceptionlist

Add-DnsServerQueryResolutionPolicy

Add-DnsServerZoneScope

Set-DnsServerDsSetting

NEW QUESTION 5

DRAG DROP

You are deploying DirectAccess to a server named DA1. Da1 will be located behind a firewall and will have a single network adapter The intermediary network will be IPv4.

You need to configure firewall to support DirectAccess.

Which firewall rules should you create for each type of traffic? To answer, drag the appropriate ports and protocols to the correct traffic types. Each port and protocol may be used once, more than once, or not at all. You may need to drag the split bar between panes or scroll to view content

Ports and Protocols

IP protocol ID 1

TCP 443

IP Protocol ID 41

UDP 3544

Answer Area

Teredo traffic:

6to4 traffic:

IP-HTTPS:

- A. Mastered
- B. Not Mastered

Answer: A

Explanation:

Ports and Protocols

IP protocol ID 1

TCP 443

IP Protocol ID 41

UDP 3544

Answer Area

Teredo traffic:

6to4 traffic:

IP-HTTPS:

UDP 3544

IP Protocol ID 41

TCP 443

NEW QUESTION 6

DRAG DROP

You have a server named Server1 that runs Windows Server 2016. You plan to deploy Internet Information Services (US) in a Windows container. You need to prepare Server1 for the planned deployment. Which three actions should you perform in sequence? To answer, move the appropriate actions from the list of actions to the answer area and arrange them in the correct order

Actions

Install the Hyper-V server role.

Install the Base Container Images.

Install the Container feature.

Install the Web Server role.

Install Docker.

Answer Area

1.

2.

3.

>

<

⬆

⬇

- A. Mastered
- B. Not Mastered

Answer: A

Explanation:

Answer Area

1.

Install the Container feature.

2.

Install Docker.

3.

Install the Base Container Images.

NEW QUESTION 7

You have a server named Server1 that runs Windows Server 2016 You install the Docker daemon on Server1 You need to configure the Docker daemon to accept connections only on TCP port 64500. What should you do?

- A. Run theNew-NetFirewallRulecmdlet
- B. Run theSet-ServiceWindows PowerShell cmdlet.
- C. Edit the daemon.json file.
- D. Edit the configuration json file

Answer: C

NEW QUESTION 8

HOTSPOT

You have a server that runs Windows Server 2016.

You run the commands shown in the following output.

```
PS G:\> Get-DedupVolume | fl

Volume                : G:
VolumeId              : \\?\Volume{2efa2f6e-db4a-4bb1-aal5-31ae8b073dl6}\
Enabled               : True
UsageType             : Default
DataAccessEnabled     : True
Capacity              : 923.87 GB
FreeSpace             : 393.98 GB
UsedSpace             : 529.89 GB
UnoptimizedSize       : 1008.7 GB
SavedSpace            : 478.82 GB
SavingRate            : 47 %
MinimumFileAgeDays    : 3
MinimumFileSize       : 32768
NoCompress            : False
ExcludeFolder         :
ExcludeFileType       :
ExcludeFileTypeDefault : {edb, jrs}
NoCompressionFileType : {asf, mov, wma, wmv...}
ChunkRedundancyThreshold : 100
Verify               : False
OptimizeInUseFiles    : False
OptimizePartialFiles  : False

PS G:\> Get-Date
Tuesday, June 21, 2016 5:29:58 PM

PS G:\DC01> dir | select Mode,LastWriteTime,Length,Name | ft -AutoSize

Mode                LastWriteTime         Length      Name
----                -
d-----          2/18/2015 11:54:56 AM             Snapshots
d-----          2/18/2015 12:11:42 PM          Virtual Machines
-a----          6/21/2016  5:27:40 PM    51539608064    DC01.vhd
-a----          6/18/2016  7:00:00 AM     12400         Readme.txt
-a----          1/5/2015   7:00:00 AM    3939235840    Software.iso
```

For each of the following statements, select Yes if the statement is true. Otherwise, select No.

Answer Area

Statements

Yes

No

DC01.vhd will be processed by deduplication.

☐
☐

Readme.txt will be processed by deduplication.

☐
☐

Software.iso will be processed by deduplication.

☐
☐

- A. Mastered
- B. Not Mastered

Answer: A

Explanation:

Answer Area

Statements	Yes	No
DC01.vhd will be processed by deduplication.	<input type="radio"/>	<input checked="" type="radio"/>
Readme.txt will be processed by deduplication.	<input type="radio"/>	<input checked="" type="radio"/>
Software.iso will be processed by deduplication.	<input checked="" type="radio"/>	<input type="radio"/>

NEW QUESTION 9

Your network contains an Active Directory domain named contoso.com. The domain contains two servers named Server1 and Server2 that have the same hardware configuration.

You need to asynchronously replicate volume F: from Server1 to Server2. What should you do?

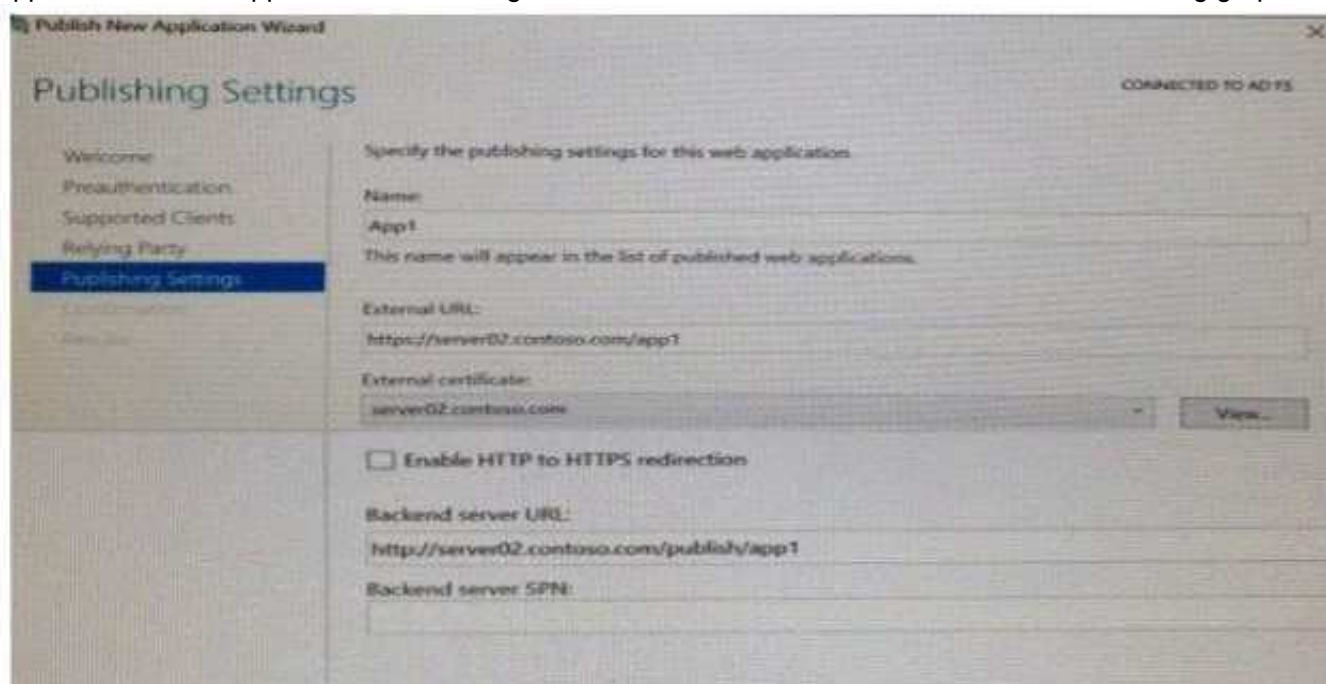
- A. Run New-SRPartnership and specify the -ReplcationMode parameter.
- B. Install the Failover Clustering feature and create a new cluster resource group.
- C. Install the Failover Clustering feature and use Cluster Shared Volumes (CSV).
- D. Run Set-DfsrServiceConfiguration and specify the -RPCPort parameter.

Answer: A

NEW QUESTION 10

HOTSPOT

You have a server named Served that runs Windows Server 2016. Server1 has the Windows Application Proxy role service installed. You are publishing an application named App1 that will use Integrated Windows authentication as shown in the following graphic.



Use the drop-down menus to select the answer choice that completes each statement based on the information presented in the graphic.

Before you can complete the wizard, you must [answer choice]

change the external certificate
configure the Backend server SPN
select Enable HTTP to HTTPS redirection

To ensure that users can access App1 externally, you must change the External URL to [answer choice.]

https://app1.contoso.com/app1
https://server02.contoso.com/app1
https://server02.contoso.com/publish/app1

- A. Mastered
- B. Not Mastered

Answer: A

Explanation:

Before you can complete the wizard, you must [answer choice]

change the external certificate

configure the Backend server SPN

select Enable HTTP to HTTPS redirection

To ensure that users can access App1 externally, you must change the External URL to [answer choice.]

https://app1.contoso.com/app1

https://server02.contoso.com/app1

https://server02.contoso.com/publish/app1

NEW QUESTION 10

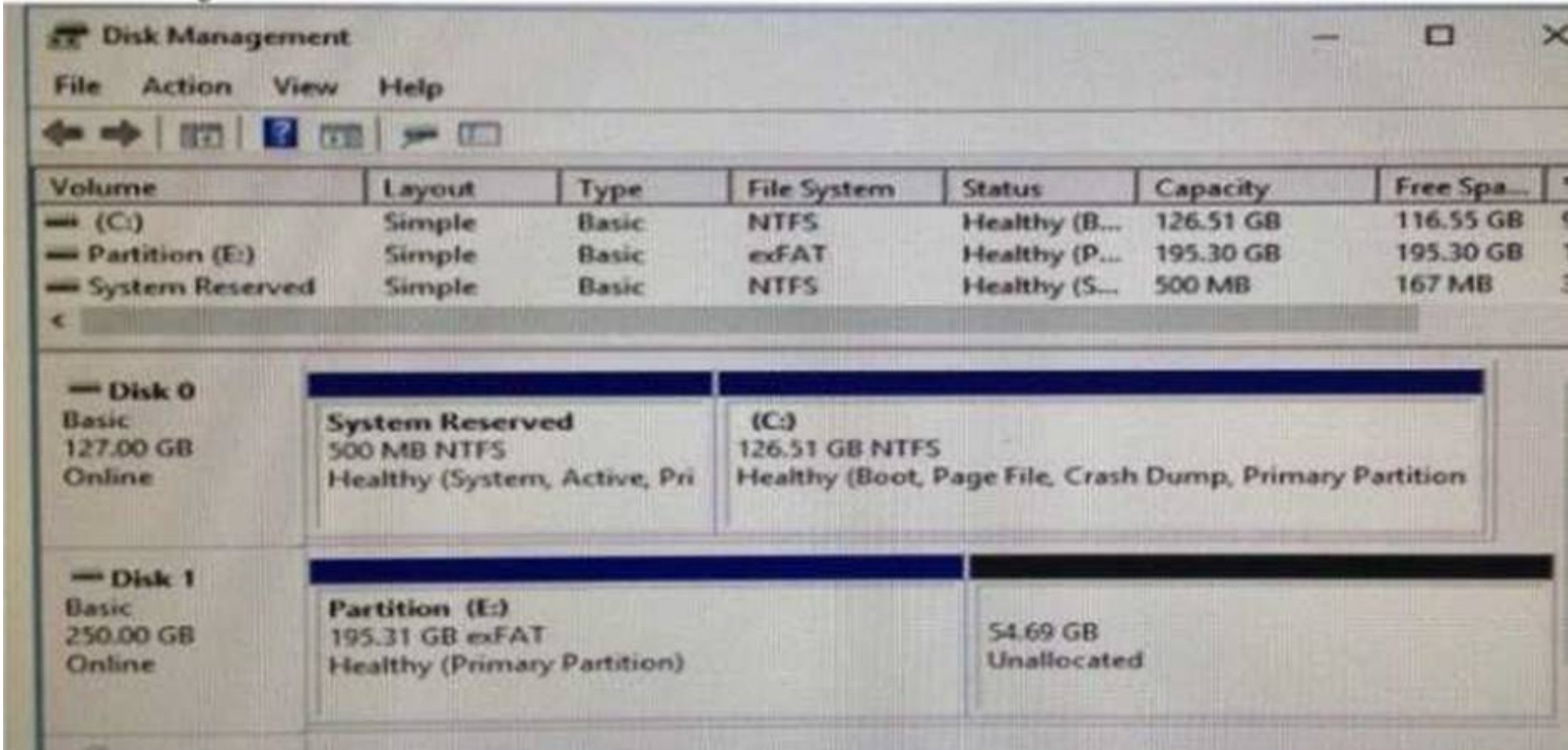
You need to create highly available storage spaces that connect to directly attached storage on the hosts Which cmdlet should you use?

- A. Enable-ClusterStorageSpacesDiret
- B. Set-StoragePool
- C. Add-ClusterDisk
- D. Update-ClusterVirtualMachineConfiguration

Answer: A

NEW QUESTION 13

You have a server named Server 1 that runs Windows Server 2016 The disk configuration for Served is shown in the exhibit



You add Server1 to a cluster
You need to ensure that you can use Disk1 (or Storage Spaces Direct What should you do first?

- A. Delete Partition (E:)
- B. Set Disk1 to offline.
- C. Convert Disk 1 to a dynamic disk
- D. Convert Partition (E:) to ReFS

Answer: A

NEW QUESTION 16

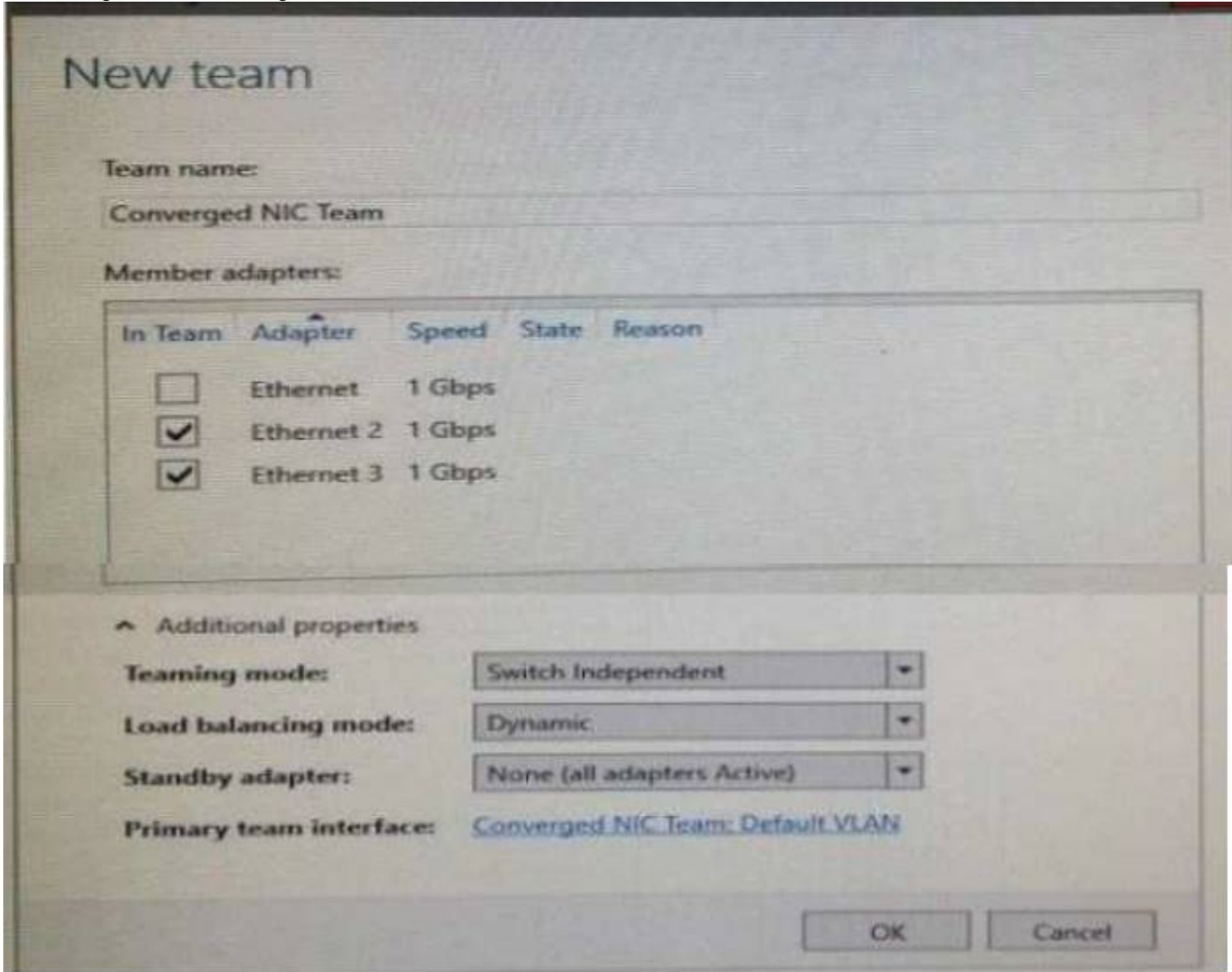
You have an application named App1 App1 is distributed to multiple Hyper-V virtual machines in a multitenant environment You need to ensure that the traffic is distributed evenly among the virtual machines that host App1 What should you include in the environment?

- A. Network Controller and Windows Server Network Load Balancing (NLB) nodes
- B. Network Controller and Windows Server Software Load Balancing (SLB) nodes
- C. an RAS Gateway and Windows Server Network Load Balancing (NLB) nodes
- D. an RAS Gateway and Windows Server Software Load Balancing (SLB) nodes

Answer: D

NEW QUESTION 17

You have a server named Server1 that runs Windows Server 2016. Server! is a Hyper-V host that hosts a virtual machine named VM1. Server1 has three network adapter cards That connect to a virtual switch named vSwitch1. You configure NIC Teaming on VM1 as shown in the exhibit.



You need to ensure that VM1 will retain access to the network if a physical adapter card fails on Server1. What should you do?

- A. From Hyper-V Manager on Server1, modify the settings of VM1.
- B. From Windows PowerShell on Server1, run theSet-VmSwitchcmdlet.
- C. From the properties of the NIC team on VM1, add the adapter named Ethernet to the NIC tea
- D. D.From the properties of the NIC team on VM1. change the load balancing of the NIC team.

Answer: A

NEW QUESTION 18

HOTSPOT

You have a machine named VM1 that runs Windows Server 2016 VM1 is a Remote Desktop Services (RDS) server. You need to ensure that only TCP port 3389 can be used to connect to VM1 over the network. Which command should you run on the Hyper-V host? To answer, select the appropriate options in the answer area.

▼

Add-VmNetworkAdapterAcl
Add-VmNetworkAdapterExtendedAcl
Set-VmNetworkAdapter
Set-VmNetworkAdapterRoutingDomain
Mapping

-VMName VM1 -Direction

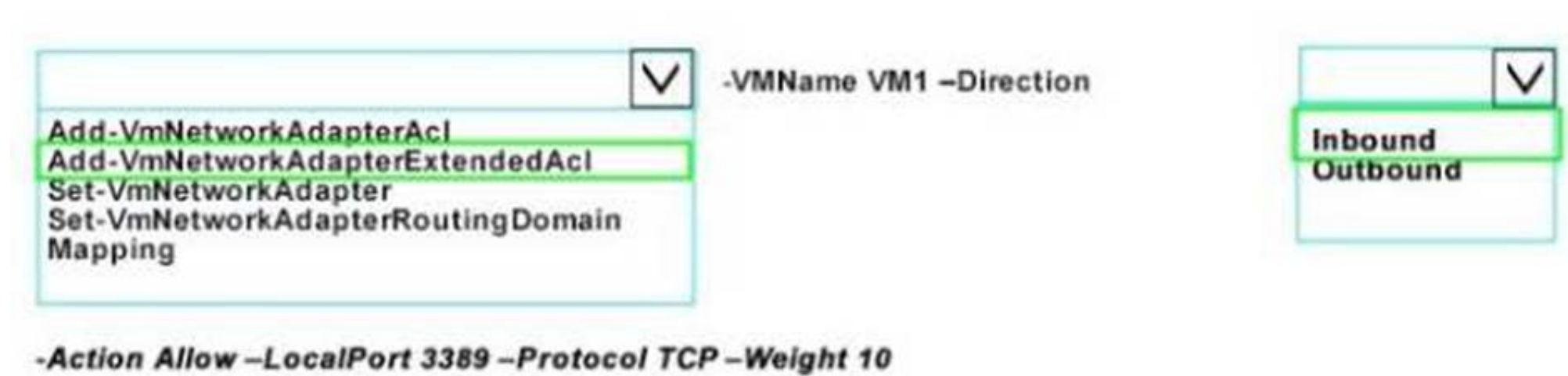
▼

Inbound
Outbound

- A. Mastered
- B. Not Mastered

Answer: A

Explanation:



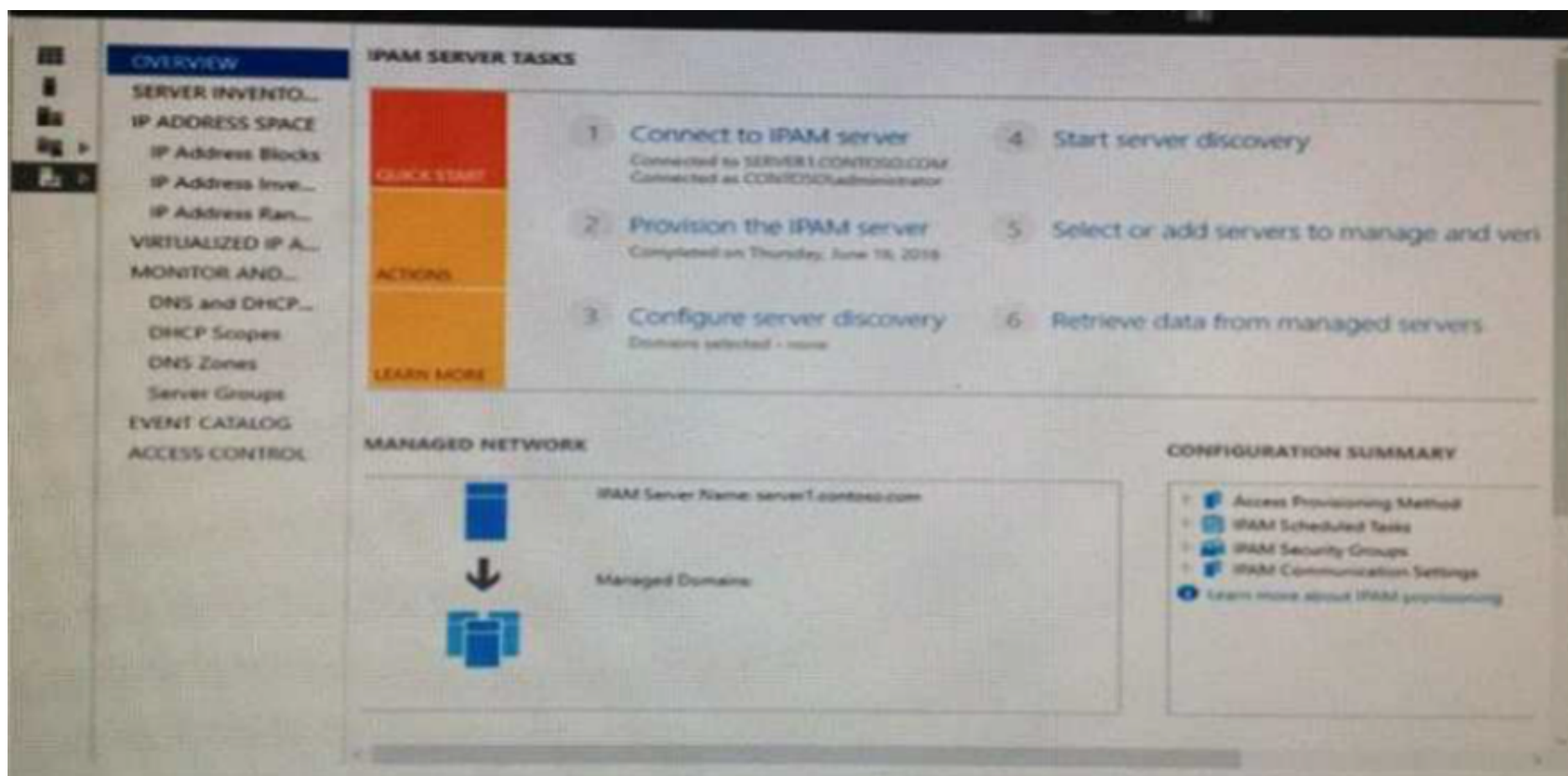
NEW QUESTION 21

HOTSPOT

Your company has a testing environment that contains an Active Directory domain named contoso.com. The domain contains a server named Server1 that runs Windows Server 2016. Server1 has IP Address Management (IPAM) installed. IPAM has the following configuration.

Version	: 6.3.0.1
Port	: 4885
ProvisioningMethod	: Automatic
GpoPrefix	: IPAM
HMACKey	: System.Security.SecureString

The IPAM Overview page from Server Manager is shown in the IPAM Overview exhibit.



The group policy configurations are shown in the GPO exhibit.



For each of the following statements, select Yes if the statement is true Otherwise, select No

Statements	Yes	No
If a DNS server is added to contoso.com, the server will be discovered by IPAM automatically.	<input type="radio"/>	<input type="radio"/>
If you manually add a DHCP server named Server3 to IPAM and set the Manageability status to Managed, the IPAM_DHCP Group Policy will apply to Server3.	<input type="radio"/>	<input type="radio"/>
If you click Start server discovery, the domain controllers in contoso.com will be discovered by IPAM.	<input type="radio"/>	<input type="radio"/>

- A. Mastered
- B. Not Mastered

Answer: A

Explanation:

Statements	Yes	No
If a DNS server is added to contoso.com, the server will be discovered by IPAM automatically.	<input type="radio"/>	<input checked="" type="radio"/>
If you manually add a DHCP server named Server3 to IPAM and set the Manageability status to Managed, the IPAM_DHCP Group Policy will apply to Server3.	<input checked="" type="radio"/>	<input type="radio"/>
If you click Start server discovery, the domain controllers in contoso.com will be discovered by IPAM.	<input type="radio"/>	<input checked="" type="radio"/>

NEW QUESTION 24

You need to modify the GPO prefix by IPAM. What should you do?

- A. Run theSet-IpamConfigurationcmdlet
- B. ClickProvision the IPAM serverin Server Manager.
- C. ClickConfigure server discoveryin Server Manage
- D. Run theInvoke-IpamGpoProvisioningcmdlet

Answer: A

NEW QUESTION 25

DRAG DROP

Your network contains an Active Directory domain named contoso.com. The domain contains two servers named Server1 and Server2 that run Windows Server 2016.

Server1 has IP Address Management (IPAM) installed. Server2 has Microsoft System Center 2016 Virtual Machine Manager (VMM) installed.

You need to integrate IPAM and VMM.

Which types of objects should you create on each server? To answer, drag the appropriate object types to the correct servers. Each object type may be used once, more than once, or not at all. You may need to drag the split bar between panes or scroll to view content.

Access policy

Run As Account

User Role

Network Service

Service Template

Server1:

Object

Server2:

Object

Object

- A. Mastered
- B. Not Mastered

Answer: A

Explanation:

Serve

Access policy

Serve

Run As Account

Network Service

NEW QUESTION 30

Note: This question is part of a series of questions that use the same similar answer choices. An answer choice may be correct for more than one question in the series. Each question is independent of the other questions in this series. Information and details provided in a question apply only to that question.

You have a two-node Hyper-V cluster named Cluster1 at a primary location and a stand-alone Hyper-V host named Server1 at a secondary location.

A virtual machine named VM1 runs on Cluster1. You configure a Hyper-V Replica of VM1 to Server1. You need to perform a Test Failover of VM1. Which tool should you use?

- A. the clussvc.exe command
- B. the cluster.exe command
- C. the Computer Management console

- D. the configurehyperv.exe command
- E. the Disk Management console
- F. the Failover Cluster Manager console
- G. the Hyper-V Manager console
- H. the Server Manager Desktop app

Answer: G

NEW QUESTION 33

In this section, you'll see one or more sets of questions with the same scenario and problem. Each question presents a unique solution to the problem, and you must determine whether the solution meets the stated goals. Any of the solutions might solve the problem. It is also possible that none of the solutions solve the problem. Once you answer a question in this section, you will NOT be able to return to it. As a result, these questions will not appear in the review screen. Note: This question is part of a series of questions that present the same scenario. Each question in the series contains a unique solution. Determine whether the solution meets the stated goals. Your network contains an Active Directory forest named contoso.com. The forest contains a member server named Server1 that runs Windows Server 2016. All domain controllers run Windows Server 2012 R2. Contoso.com has the following configuration:

```
PS C:\> (Get-ADForest). ForestMode
Windows2008R2Forest

PS C:\> (Get-ADDomain). DomainMode
Windows2008R2Domain
PS C:\>
```

You plan to deploy an Active Directory Federation Services (AD FS) farm on Server1 and to configure device registration. You need to configure Active Directory to support the planned deployment. Solution: You raise the domain functional level to Windows Server 2012 R2. Does this meet the goal?

- A. Yes
- B. No

Answer: B

NEW QUESTION 37

Note: This question is part of a series of questions that present the same scenario. Each question in the series contains a unique solution that might meet the stated goals. Some question sets might have more than one correct solution, while others might not have a correct solution. After you answer a question in this section, you will NOT be able to return to it. As a result, these questions will not appear in the review screen. You have two servers that run Windows Server 2016. You plan to create a Network Load Balancing (NLB) cluster that will contain both servers. You need to configure the network cards on the servers for the planned NLB configuration. Solution: You configure the network cards to be on the same subnet and to have dynamic IP addresses. You configure the cluster to use multicast. Does this meet the goal?

- A. Yes
- B. No

Answer: B

Explanation:

References:
<https://technet.microsoft.com/en-us/windows-server-docs/networking/technologies/network-load-balancing>

NEW QUESTION 42

Note: This question is part of a series of questions that present the same scenario. Each question in the series contains a unique solution that might meet the stated goals. Some question sets might have more than one correct solution, while others might not have a correct solution. After you answer a question in this section, you will NOT be able to return to it. As a result, these questions will not appear in the review screen. You have two servers that run Windows Server 2016. You plan to create a Network Load Balancing (NLB) cluster that will contain both servers. You need to configure the network cards on the servers for the planned NLB configuration. Solution: You configure the network cards to be on the same subnet and to have static IP addresses. You configure the cluster to use unicast. Does this meet the goal?

- A. Yes
- B. No

Answer: A

Explanation:

References:
<https://technet.microsoft.com/en-us/windows-server-docs/networking/technologies/network-load-balancing>

NEW QUESTION 47

Note: This question is part of a series of questions that present the same scenario. Each question in the series contains a unique solution that might meet the stated goals. Some question sets might have more than one correct solution, while others might not have a correct solution.

After you answer a question in this section, you will NOT be able to return to it. As a result, these questions will not appear in the review screen.

You are a server administrator at a company named Contoso, Ltd.

Contoso has a Windows Server 2016 Hyper-V environment configured as shown in the following table.

Hyper-V host name	Configuration	Virtual switch name
Host1	<ul style="list-style-type: none"> - Uses an Intel processor - Is a member of a SAN named SAN1 	Switch1
Host2	<ul style="list-style-type: none"> - Uses an AMD processor - Has local storage only 	Switch2
Host3	<ul style="list-style-type: none"> - Uses an Intel processor - Is a member of a SAN named SAN1 	Switch1
Host4	<ul style="list-style-type: none"> - Uses an Intel processor - Has local storage only 	Switch2

All of the virtual switches are of the external type.

You need to ensure that you can move virtual machines between the hosts without causing the virtual machines to disconnect from the network.

Solution: You implement a Hyper-V Replica between Host2 and Host4. Does this meet the goal?

A. Yes

B. No

Answer: B

NEW QUESTION 49

HOTSPOT

You have a server named Server1 that runs Windows Server 2016 server.

Server1 has the Docker daemon configured and has a container named Container1.

You need to mount the folder C:\Folder1 on Server1 to C:\ContainerFolder in Container1.

Which command should you run? To answer, select the appropriate options in the answer area.

Answer Area

Copy-ContainerFile Docker Set-Service	-Name Container1 -Path run -it -v	C:\Folder1:C:\ContainerFolder %windir%\ContainerFolder	Container1 Server1
---	--------------------------------------	---	-----------------------

A. Mastered

B. Not Mastered

Answer: A

Explanation:

Answer Area

Copy-ContainerFile Docker Set-Service	-Name Container1 -Path run -it -v	C:\Folder1:C:\ContainerFolder %windir%\ContainerFolder	Container1 Server1
--	---	--	------------------------------

NEW QUESTION 53

You have a Windows Server 2016 Hyper-V failover cluster that contains two nodes named Node1 and Node2

On Node1, you create a virtual machine named VM01 by using Hyper-V Manager.

You need to configure VM01 to move to Node2 automatically if Node1 becomes unavailable What should you do?

A. From Failover Cluster manager, run the configure Role actions.

B. From Hyper-V Manager, click VM01 and click Enable Replication.

- C. From Hyper-V Manager Click Node 1 and the modify the hyper-V settings.
- D. From Windows Powershell, run the Enable-VMReplication cmdlet.

Answer: A

Explanation:

<http://windowsitpro.com/hyper-v/make-vm-highly-available-windows-server-2012>

NEW QUESTION 57

Your network contains a new Active Directory domain named contoso.com.

You have a security policy that states that new servers should run Nano Server whenever possible. Which server role can be deployed on a Nano Server?

- A. Active Directory Domain Services
- B. DHCP Server
- C. Network Policy and Access Services
- D. DNSServer / Web Server (IIS)

Answer: D

NEW QUESTION 58

You have a server named Server 1 that runs Windows Server 2016 and has the Hyper-V server role installed.

On Server1, you plan to create a virtual machine named VM1. You need to ensure that you can start VM1 from the network.

What are two possible ways to achieve the goal? Each correct answer presents a complete solution.

- A. Create a generation 2 virtual machine.
- B. Create a generation 1 virtual machine and run theEnable-NetAdapterPackageDirectcmdlet.
- C. Create a generation 1 virtual machine that has a legacy network adapter.
- D. Create a generation 1 virtual machine and configure a single root I/O virtualization (SRV-IO) interface for the network adapter.

Answer: AC

NEW QUESTION 60

DRAG DROP

You are planning the configuration of a virtual network switch for a Hyper-V environment. The environment will contain the following Hyper-V hosts:

- A server named Server1 will have 10 virtual machines that must be able to communicate with each other. The virtual machines must be prevented from communicating with Server1 and all other servers on the corporate network.

- A two-node failover cluster named Cluster1 will have 20 virtual machines. The virtual machines will run on both nodes. Hyper-V hosts on the corporate network must be able to connect to the virtual machines.

Which type of virtual switch should you select for each Hyper-V host? To answer, drag the appropriate virtual switch types to the correct hosts. Each virtual switch type must be used once, more than once, or not at all. You may need to drag the split bar between panes or scroll to view content.

Virtual Switch Types

External
Internal
Private

Answer Area

10 virtual machines on Server1:	<input type="text"/>
20 virtual machines on Cluster1:	<input type="text"/>

- A. Mastered
- B. Not Mastered

Answer: A

Explanation:

Virtual Switch Types

External
Internal
Private



Answer Area

10 virtual machines on Server1:	Private
20 virtual machines on Cluster1:	External

NEW QUESTION 64

Note: This question is part of a series of questions that present the same scenario. Each question in the series contains a unique solution that might meet the stated goals. Some question sets might have more than one correct solution, while others might not have a correct solution.

After you answer a question in this section, you will NOT be able to return to it. As a result, these questions will not appear in the review screen.

You have a server named Server1 that runs Windows Server 2016.

Server1 hosts a line-of-business application named App1. App1 has a memory leak that occasionally causes the application to consume an excessive amount of memory.

You need to log an event in the Application event log whenever App1 consumes more than 4 GB of memory.

Solution: You create a performance counter alert data collector. Does this meet the goal?

- A. Yes
- B. No

Answer: A

NEW QUESTION 67

HOTSPOT

You deploy a new Hyper-V host named Server1 that runs Windows Server 2016. You implement receive side scaling (RSS) on Server1.

The chipset on Server1 does not support NetDMA.

All of the equipment on your network supports 10-Gbps connectivity. On Server1, you deploy a virtual machine named VM1.

You configure VM1 to aggregate all of the Windows and non-Windows tog files for all of the servers on the network.

VM1 has four virtual processors.

You discover that VM1 drops packets.

Which two options should you run? To answer, select the appropriate options in the answer area.

Answer Area

First action:

Enable TCP Chimney Offload on Server1.
Enable single root I/O virtualization (SR-IOV) on VM1.
Enable virtual machine queue (VMQ) on Server1 and VM1.

Second action:

Enable virtual TCP Chimney Offload on VM1.
Enable virtual Receive-side Scalling (vRSS) on VM1.
Enable single root I/O virtualization (SR-IOV) on Server1.

- A. Mastered
- B. Not Mastered

Answer: A

Explanation:

Answer Area

First action:

▼

Enable TCP Chimney Offload on Server1.

Enable single root I/O virtualization (SR-IOV) on VM1.

Enable virtual machine queue (VMQ) on Server1 and VM1.

Second action:

▼

Enable virtual TCP Chimney Offload on VM1.

Enable virtual Receive-side Scalling (vRSS) on VM1.

Enable single root I/O virtualization (SR-IOV) on Server1.

NEW QUESTION 72

You have a Hyper-V host named Server1 that runs Windows Server 2016. Server1 hosts a virtual machine. You need to provide VM1 with direct access to a graphics processing unit (GPU) on Server1. What should you do first?

- A. On VM1, install the QWZlity Windows Audio Video Experience (qWave) feature.
- B. Dismount the display adapter on Server1.
- C. In the settings of VM1, add a RemoteFX 3D Video Adapter.
- D. Disable the display adapter device on Server1.

Answer: D

Explanation:

Before the physical device is allowed to be passed through to the VM, the device must be disabled on the host system. The physical device must be accessible/available exclusively to the VM only. References:

Introduction to Windows Server 2016 Hyper-V DiscreteDevice Assignment, page 5 <https://lenovopress.com/lp0088.pdf>

NEW QUESTION 76

DRAG DROP

You are preparing an image of Windows Server 2016.

The image is missing the driver foe a network adapter that is required in your environment. You need to ensure that the image contains the network adapter driver. Which three cmdlets should you use in sequence? To answer, move the appropriate cmdlets from the list of cmdlets to the answer area and arrange them m the correct order.

Cmdlets

Mount-WindowsImage

Add-WindowsDriver

Get-WindowsImage

Save-WindowsImage

Add-WindowsFeature

Dismount-WindowsImage

Optimize-WindowsImage

Answer Area

1

2

3

A. Mastered

B. Not Mastered

Answer: A

Explanation:

Cmdlets

Mount-WindowsImage

Get-WindowsImage

Save-WindowsImage

Add-WindowsFeature

Answer Area

1

Add-WindowsDriver

2

Optimize-WindowsImage

3

Dismount-WindowsImage

NEW QUESTION 80

You have Nano Server image named Disk1 .vhdx. You mount Disk1 .vhdx.

You need to add a folder that contains several files to the image. Which tool or cmdlet you should use?

- A. Copy-Item
- B. Add-WindowsImage
- C. Add-WindowsPackage
- D. Edit-NanoServerImage

Answer: A

NEW QUESTION 83

Your network contains an Active Directory domain named contoso.com. The domain contains two servers, Server1 and Server2 that run Windows Server 2016.

Each server has an operating system disk and four data disks. All of the disks are locally attached SATA disks. Data disk1 is initialized as an MBR disk, and has a single NTFS volume.

You plan to implement Storage Spaces Direct by using the data disks on Server1 and Server2. You need to prepare the data disks for the Storage Spaces Direct implementation.

What should you do?

- A. Convert the data disks to dynamic disks.
- B. Format the volumes on the data disks as exFAT.
- C. Initialize the data disks as GPT disks and create an ReFS volume on each disk.
- D. Delete the volumes from the data disks.

Answer: D

NEW QUESTION 85

You need to implement network virtualization.

On which object should you configure the virtual subnet ID?

- A. Virtual switch
- B. Hyper-V server
- C. VM
- D. Virtual network adapter

Answer: A

NEW QUESTION 88

Note: This question is part of a series of questions that use the same or similar answer choices. An answer choice may be correct for more than one question in

the series. Each question is independent of the other questions in this series. Information and details provided in a question apply only to that question. You have two servers named Server1 and Server2 that run Windows Server 2016. Server1 and Server2 have the Hyper-V server role installed. An iSCSI SAN connects to the network. You create a LUN on the SAN and configure both servers to connect to the iSCSI target. You create a failover cluster and add Server1 and Server2 to the cluster. You connect both servers to the iSCSI target and format the shared storage. You need to add the shared storage to the cluster. The solution must ensure that virtual machines running on both nodes can access the shared storage simultaneously. Which tool should you use?

- A. the clussvc.exe command
- B. the cluster.exe command
- C. the Computer Management snap-in
- D. the configurehyperv.exe command
- E. the Disk Management snap-in
- F. the Failover Cluster Manager snap-in
- G. the Hyper-V Manager snap-in
- H. the Server Manager app

Answer: F

Explanation:

References:

[https://technet.microsoft.com/en-us/library/jj612868\(v=ws.11\).aspx](https://technet.microsoft.com/en-us/library/jj612868(v=ws.11).aspx)

NEW QUESTION 93

You create a Nano server image named Nano1.vhdx by using the New-NanoServerImage cmdlet. You attach Nano1.vhdx to a Generation 1 virtual machine named Nano1.

When you start Nano1, you get the following error message: "Boot failure. Reboot and select proper Boot device or Insert Boot Media in selected Boot device"

You need to successfully start Nano server. What should you do?

- A. Attach Nano1.vhdx to a SCSIcontroller.
- B. Recreate Nano1 as a Generation 2 virtual machine.
- C. Increase the memory of Nano1 to 512 Mb.
- D. Modify the BIOS settings of Nano1.

Answer: B

Explanation:

A Generation 1 VM cannot boot from a vhdx disk; only a Generation 2 VM can boot from an vhdx disk.

NEW QUESTION 94

HOTSPOT

Your network contains an Active Directory forest named contoso.com. You need to add a new domain named fabrikam.com to the forest.

What command should you run? To answer, select the appropriate options in the answer area.

Answer Area

	▼	-DomainType		▼
Install-ADDSDomain			TreeDomain	
Install-ADDSDomainControler			ChildDomain	
Install-ADDSTForest				

`-InstallDns:$true -NewDomainName fabrikam.com -ParentDomainName contoso.com`

- A. Mastered
- B. Not Mastered

Answer: A

Explanation:

Answer Area

<div> <div>▼</div> <div>Install-ADDSDomain</div> <div>Install-ADDSDomainController</div> <div>Install-ADDSDForest</div> </div>	-DomainType	<div> <div>▼</div> <div>TreeDomain</div> <div>ChildDomain</div> </div>
--	-------------	--

-InstallDns:Strue -NewDomainName fabrikam.com -ParentDomainName contoso.com

Explanation:

References:

[https://technet.microsoft.com/en-us/library/hh974722\(v=wps.630\).aspx](https://technet.microsoft.com/en-us/library/hh974722(v=wps.630).aspx)

NEW QUESTION 98

HOTSPOT

You have a DNS server named Server1.

The forwarders are configured as shown in the Forwarders exhibit. (Click the Exhibit button.)

SERVER1 Properties

Debug Logging | Event Logging | Monitoring | Security

Interfaces | **Forwarders** | Advanced | Root Hints

Forwarders are not available because this server does not use recursion.

IP Address	Server FQDN
168.63.129.16	<Unable to resolve>

☒ Use root hints if no forwarders are available Edit...

Note: If conditional forwarders are defined for a given domain, they will be used instead of server-level forwarders. To create or view conditional forwarders, navigate to the Conditional Forwarders node in the scope tree.

OK Cancel Apply Help

The Advanced Settings are configured as shown in the Advanced exhibit. (Click the Exhibit button.)

SERVER1 Properties

Debug Logging Event Logging Monitoring Security
 Interfaces Forwarders **Advanced** Root Hints

Server version number:
 10.0 14300 (0x37dc)

Server options:

- ☒ Disable recursion (also disables forwarders)
- ☐ Enable BIND secondaries
- ☐ Fail on load if bad zone data
- ☒ **Enable round robin**
- ☒ Enable netmask ordering
- ☒ Secure cache against pollution

Name checking: Multibyte (UTF8) v

Load zone data on startup: From Active Directory and registry v

☐ Enable automatic scavenging of stale records

Scavenging period: 0 days v

Reset to Default

OK Cancel Apply Help

The Root Hints are configured as shown in the Root Hints exhibit. (Click the Exhibit button.)

SERVER1 Properties

Debug Logging Event Logging Monitoring Security
 Interfaces Forwarders Advanced **Root Hints**

Root hints resolve queries for zones that do not exist on the local DNS server. They are only used if forwarders are not configured or fail to respond.

Name servers:

Server Fully Qualified Domain Name (FQDN)	IP Address
a.root-servers.net.	[2001:503:ba3e::2...
b.root-servers.net.	[2001:500:84:b]
f.root-servers.net.	[2001:500:2f:f]
i.root-servers.net.	[2001:7fe::53]
l.root-servers.net.	[2001:500:9f::42]
m.root-servers.net.	[2001:dc3::35]

Add... Edit... Remove Copy from Server

OK Cancel Apply Help

Server1 does not contain any DNS zones.
 For each of the following statements, select Yes if the statement is true. Otherwise, select No.

Answer Area

Statements	Yes	No
Server1 can resolve the names of hosts that are located on the Internet.	<input type="radio"/>	<input type="radio"/>
From Server1 Properties, if you perform a test from the Monitoring tab, the recursive test will pass.	<input type="radio"/>	<input type="radio"/>
Server1 is configured as a root DNS server.	<input type="radio"/>	<input type="radio"/>

- A. Mastered
- B. Not Mastered

Answer: A

Explanation:

Recursion is disabled so internet hosts cannot be resolved. The recursive test fails because recursion is disabled. Server1 is not configured as a root server. The forwarders list would be greyed out if it was.

NEW QUESTION 99

HOTSPOT

Your network contains an Active Directory forest. The forest contains one domain named contoso.com. The domain contains two domain controllers named DC1 and DC2. DC1 holds all of the operations master roles.

During normal network operations, you run the following commands on DC2:

```
Move-ADDirectoryServerOperationMasterRole -Identity "DC2" - OperationMasterRole PDCEmulator
```

```
Move-ADDirectoryServerOperationMasterRole -Identity "DC2" - OperationMasterRole RIDMaster
```

DC1 fails.

You remove DC1 from the network, and then you run the following command:

```
Move-ADDirectoryServerOperationMasterRole -Identity "DC2" - OperationMasterRole SchemaMaster
```

For each of the following statements, select Yes if the statement if true. Otherwise, select No.

Answer Area

Statements	Yes	No
DC2 holds the schema master operations role.	<input type="radio"/>	<input type="radio"/>
DC2 holds the PDC emulator master operations role.	<input type="radio"/>	<input type="radio"/>
Currently, you can add additional domains to the forest.	<input type="radio"/>	<input type="radio"/>

- A. Mastered
- B. Not Mastered

Answer: A

Explanation:

Answer Area

Statements	Yes	No
DC2 holds the schema master operations role.	<input type="radio"/>	<input checked="" type="radio"/>
DC2 holds the PDC emulator master operations role.	<input checked="" type="radio"/>	<input type="radio"/>
Currently, you can add additional domains to the forest.	<input type="radio"/>	<input checked="" type="radio"/>

NEW QUESTION 104

Note: This question is part of a series of questions that present the same scenario. Each question in the series contains a unique solution that might meet the stated goals. Some question sets might have more than one correct solution, while others might not have a correct solution.
After you answer a question in this section, you will NOT be able to return to it. As a result, these questions will not appear in the review screen.
Your network contains an Active Directory forest named contoso.com. You need to identify which server is the schema master.
Solution: You open Active Directory Users and Computers, right-click contoso.com in the console tree, and then click Operations Master.
Does this meet the goal?

- A. Yes
- B. No

Answer: B

Explanation:

This solution only shows the domain FSMO roles, not the forest FSMO roles.
References: <https://blogs.technet.microsoft.com/mempson/2007/11/08/how-to-find-out-who-has-your-fsmo-roles/>

NEW QUESTION 107

You have two servers named Server1 and Server2. A firewall exists between Server1 and Server2. Both servers run Windows Server Update Services (WSUS).
Server1 downloads updates from Microsoft update.
Server2 must synchronize updates from Server1. Which port should to open on the firewall?

- A. 80
- B. 443
- C. 3389
- D. 8530

Answer: D

NEW QUESTION 112

DRAG DROP
You have a Hyper-V host named Server1 that runs Windows Server 2016.
The installation source files for Windows Server 2016 are located in D:\Source. You need to create a Nano Server image.
Which cmdlets should you run? To answer, drag the appropriate cmdlets to the correct targets. Each cmdlet may be used once, more than once, or not at all. You may need to drag the split bat between panes or scroll to view content.

Cmdlets

Add-WindowsImage

Import-Module

Install-Module

New-NanoServerImage

New-WindowsCustomImage

Answer Area

First cmdlet to run:

cmdlet

Second cmdlet to run:

cmdlet

- A. Mastered
- B. Not Mastered

Answer: A

Explanation:

Step 1: Import Module

Import-Module .\NanoServerImageGenerator.psm1 Step 2: New New-NanoServerImage

Create Nano Server Image VHDX

New-NanoServerImage -MediaPath .\Files -BasePath .\Base -TargetPath .\Images\NanoVMGA.vhdx References: <https://technet.microsoft.com/en-us/windows-server-docs/get-started/deploy-nano-server>

NEW QUESTION 114

HOTSPOT

Your network contains an Active Directory domain named contoso.com. The domain contains two servers named Server1 and Server2 that run Windows Server 2016.

Server1 has Microsoft System Center 2016 Virtual Machine Manager (VMM) installed. Server2 has IP Address Management (IPAM) installed.

You create a domain user named User1.

You need to integrate IPAM and VMM. VMM must use the account of User1 to manage IPAM. The solution must use the principle of least privilege.

What should you do on each server? To answer, select the appropriate options in the answer area.

Answer Area

On Server1:

	▼
Create a Run as Account that uses User1	
Add User1 to the Fabric Administrator user role	
Add User1 to the Remote Management Users group	

On Server2:

	▼
Add User1 to IPAM Administrator Role	
Add User1 to IPAM ASM Administrator Role	
Add User1 to IPAM MSM Administrator Role	

A. Mastered

B. Not Mastered

Answer: A

Explanation:

On Server1: Create a Run As Account that uses User1.

On Server2: Add User1 to IPAM ASM Administrator Role. [https://technet.microsoft.com/en-us/library/dn783349\(v=ws.11\).aspx](https://technet.microsoft.com/en-us/library/dn783349(v=ws.11).aspx) [https://technet.microsoft.com/en-us/library/jj878348\(v=ws.11\).aspx](https://technet.microsoft.com/en-us/library/jj878348(v=ws.11).aspx)

NEW QUESTION 116

DRAG DROP

Your network contains an Active Directory domain named contoso.com. The domain contains a server named Server1 that runs Windows Server 2016.

You install IP Address Management (IPAM) on Server1.

You need to manually start discovery of the servers that IPAM can manage in contoso.com.

Which three cmdlets should you run in sequence? To answer, move the appropriate cmdlets from the list of cmdlets to the answer area and arrange them in the correct order.

Cmdlets

Add-IpamAddress

Add-IpamDiscoveryDomain

Add-IpamSubnet

Update-IpamServer

Invoke-IpamServerProvisioning

Start-ScheduledTask

Answer Area



- A. Mastered
 B. Not Mastered

Answer: A

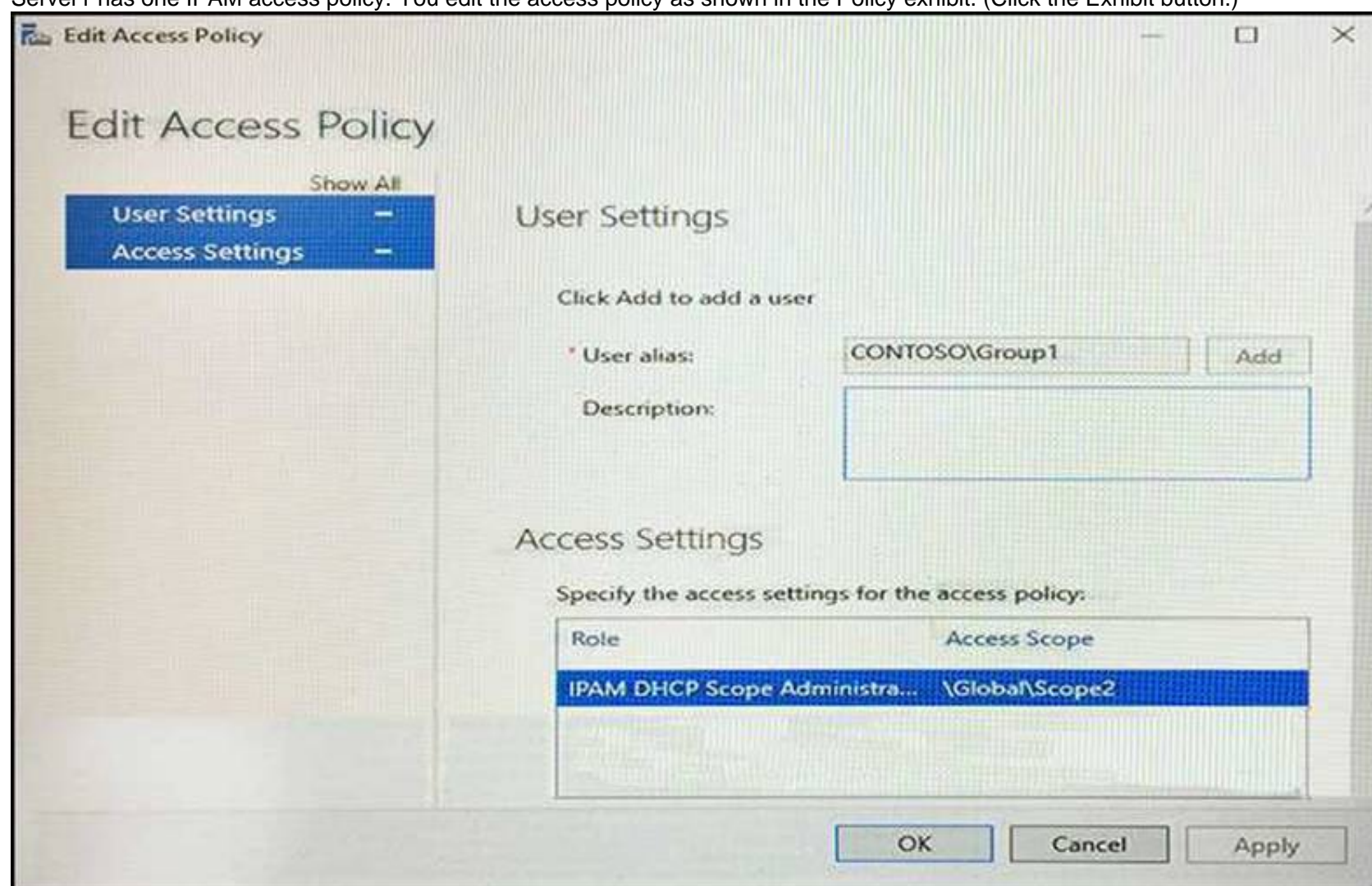
Explanation:

<https://technet.microsoft.com/itpro/powershell/windows/ipam/add-ipamdiscoverydomain> <https://technet.microsoft.com/itpro/powershell/windows/ipam/add-ipamserverinventory> <https://technet.microsoft.com/itpro/powershell/windows/ipam/invoke-ipamserverprovisioning>

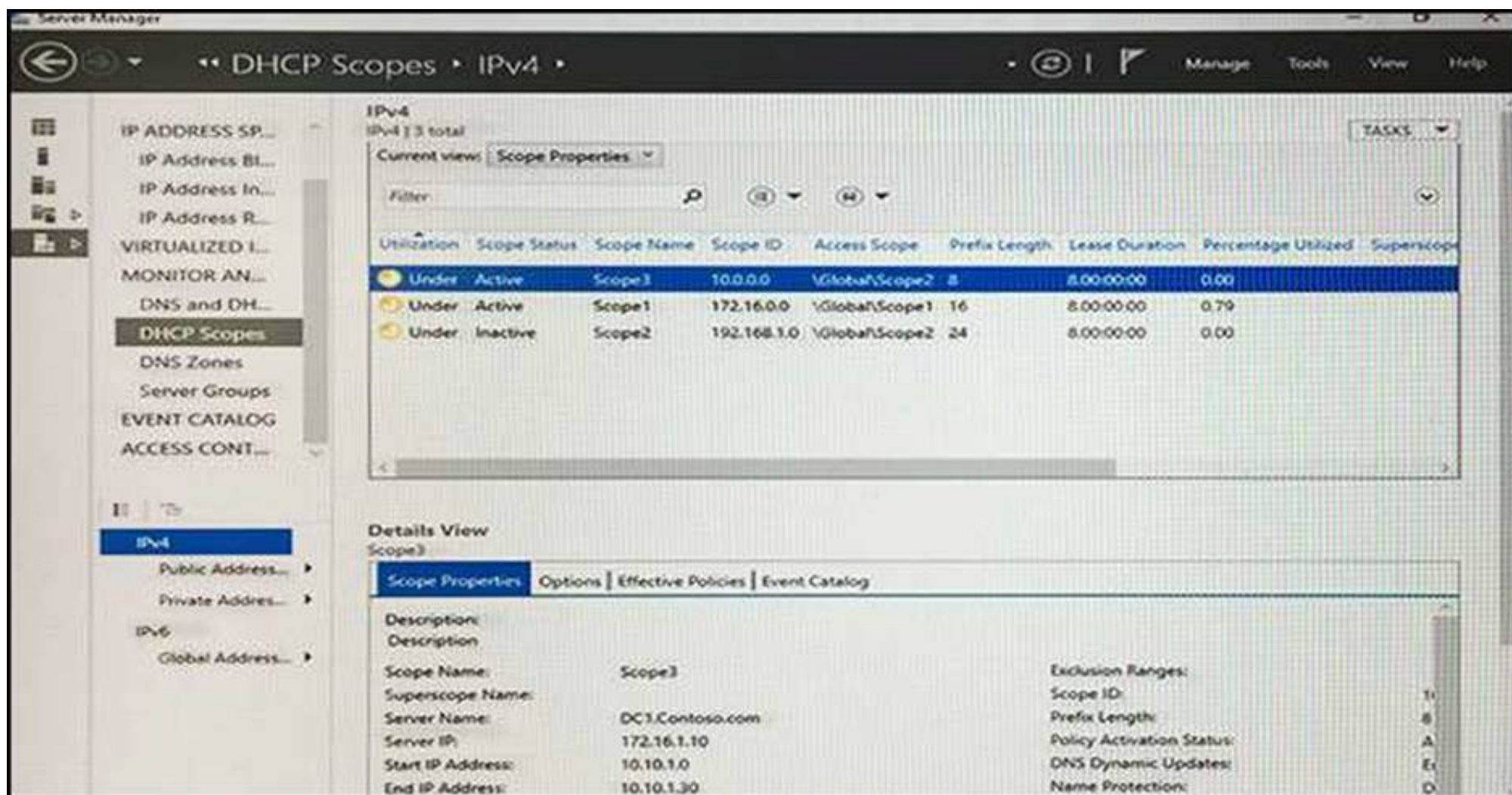
NEW QUESTION 117

HOTSPOT

You network contains an Active Directory named contoso.com. The domain contains two servers named Server1 and Server2 that run Windows Server 2016. Server1 has IP Address Management (IPAM) installed. Server2 has the DHCP Server role installed. The IPAM server retrieves data from Server2. The domain has two users named User1 and User2 and a group named Group1. User1 is the only member of Group1. Server1 has one IPAM access policy. You edit the access policy as shown in the Policy exhibit. (Click the Exhibit button.)



The DHCP scopes are configured as shown in the Scopes Exhibit. (Click the Exhibit button.)



For each of the following statements, select Yes if the statement is true. Otherwise, select No.

Answer Area

Statements

Yes

No

User1 can modify the description of Scope1.

☐
☐

User2 can modify the description of Scope1.

☐
☐

User1 can modify the description of Scope2.

☐
☐

- A. Mastered
- B. Not Mastered

Answer: A

Explanation:

[https://technet.microsoft.com/en-us/library/dn268500\(v=ws.11\).aspx](https://technet.microsoft.com/en-us/library/dn268500(v=ws.11).aspx)

NEW QUESTION 121

You have a Hyper-V host named Server1 that runs Windows Server 2016. Server1 hosts a virtual machine named VM1. VM1 is in a workgroup. VM1 is currently in a running state.

You need to create 10 copies of VM1 on Server1 in the least amount of time possible. Which cmdlets should you use?

- A. Stop-VM, and then Import-VM
- B. Export-VM, and then Import-VM
- C. Checkpoint-VM, and then New-VM
- D. Copy-VMFile, and then New-VM

Answer: B

NEW QUESTION 123

You have a server named Server1 that runs Windows Server 2016. Server1 has four SCSI disks and a storage pool named Pool1 that contains three disks. You create a virtual disk named Disk 1 that uses a mirrored layout.

You create a partition named Partition1 that uses all of the available space on Disk 1. You need to extend Partition1.

What should you do first?

- A. From Windows PowerShell, run the Resize-VirtualDisk cmdlet.
- B. From Windows PowerShell, run the Resize-StorageTier cmdlet.
- C. From Windows PowerShell, run the Expand-IscsiVirtualDisk cmdlet.
- D. From Disk Management, modify the properties of Partition1.

Answer: A

NEW QUESTION 126

Note: This question is part of a series of questions that use the same scenario. For your convenience, the scenario is repeated in each question. Each question presents a different goal and answer choices, but the text of the scenario is exactly the same in each question in this series.

Start of repeated scenario

Your network contains an Active Directory domain named contoso.com. The functional level of the forest and the domain is Windows Server 2008 R2. All servers in the domain run Windows Server 2016 Standard. The domain contains 300 client computers that run either Windows 8.1 or Windows 10.

The domain contains nine servers that are configured as shown in the following table.

Server name	Configuration	Planned changes
Server1	Domain controller	None
Server2	File server	Run Failover Clustering and Storage Spaces Direct
Server3	File server	Run Failover Clustering and Storage Spaces Direct
Server4	Hyper-V host	Run shielded virtual machines
Server5	Hyper-V host	None
Server6	Member server	Run Active Directory Federation Services (AD FS)
VM1	Virtual machine hosted on Server 5	None
VM2	Virtual machine hosted on Server 5	None
VM3	Virtual machine hosted on Server 5	None

The virtual machines are configured as follows:

- Each virtual machine has one virtual network adapter.
- VM1 and VM2 are part of a Network Load Balancing (NLB) cluster.
- All of the servers on the network can communicate with all of the virtual machines. End of repeated scenario.

You create a new NLB cluster that contains VM3.

You need to ensure that VM2 can remain in the original cluster and be added to the new cluster. What should you do first?

- A. Add a new virtual network adapter to VM2.
- B. Install the Web Application Proxy server role on VM2 and VM3.
- C. Modify the default port rule.
- D. Change the cluster operation mode.

Answer: A

NEW QUESTION 131

DRAG DROP

You have a server named Server1 that runs Windows Server 2016.

On Server1 you use the Basic template to create a new Data Collector Set named CollectorSet1.

You need to configure data collection for the performance counters. The configuration must support the following requirements:

Data collection must run on a schedule.

Data collection must stop if there is less than 1 GB of free disk space.

What should you modify to meet each requirement? To answer, drag the appropriate settings to the correct requirements. Each setting may be used once, more than once, or not at all. You may need to drag the Split bar between panes or scroll to view content.

Settings to Modify

Answer Area

The Data Manager settings of CollectorSet1

Data collection must run on a schedule:

Setting to modify

The properties of the performance counter data collector

Data collection must stop if there is less than 1 GB of free disk space:

Setting to modify

The properties of CollectorSet1

A. Mastered

B. Not Mastered

Answer: A

Explanation:

Settings to Modify

The Data Manager settings of CollectorSet1

Answer Area

Data collection must run on a schedule:

The properties of CollectorSet1

Data collection must stop if there is less than 1 GB of free disk space:

The properties of the performance counter data collector

NEW QUESTION 133

DRAG DROP

You have a file server named Server1 that runs Windows Server 2016.
You need to create a report that lists all of the share permissions assigned to the security principals on Server1.
How should you complete the command? To answer, drag the appropriate cmdlets to the correct targets. Each cmdlet may be used once, more than once, or not at all. You may need to drag the split bar between panes or scroll to view content.

Cmdlets

- Get-Acl
- Get-SmbClientConfiguration
- Get-SmbShare
- Set-SmbPathAcl
- Get-Credential
- Get-SmbDelegation
- Get-SmbShareAccess

Answer Area

Cmdlet		Cmdlet
--------	--	--------

A. Mastered
B. Not Mastered

Answer: A

Explanation:

Cmdlets

Answer Area

- Get-Acl
- Get-SmbClientConfiguration
- Get-SmbShare
- Set-SmbPathAcl
- Get-Credential
- Get-SmbDelegation
- Get-SmbShareAccess

Get-SmbShare | Get-SmbShareAccess

NEW QUESTION 134

Your manager has asked you to configure the company Windows Server 2016 domain controller. He wants all new computer accounts to be placed in the General OU, when computers join the domain. Which command should you use to accomplish this?

- A. Dsmove
- B. Netdom
- C. Redircmp
- D. None of these

Answer: C

Explanation:

The Redircmp command is used to redirect the default OU of a newly created object such as a user to another OU.

NEW QUESTION 138

You want to capture the state, data, and hardware configuration of a running virtual machine. Which checkpoint can be very useful if you need to recreate a specific state or condition of a running virtual machine so that you can troubleshoot a problem?

- A. Production
- B. Standard

Answer: B

Explanation:

Standard checkpoints capture the state, data, and hardware configuration of a running virtual machine and are intended for use in development and test scenarios.

NEW QUESTION 143

Which container type is described below:
 Provides application isolation through process and namespace isolation technology.
 This container shares a kernel with the container host and all containers running on the host.

- A. Hyper-V Container
- B. Windows Server Container

Answer: B

NEW QUESTION 148

One of your team previously opened Hyper-V Manager, selected a virtual machine and followed the Enable Replication wizard. The process was completed successfully and replications were occurring as expected. Several weeks later and you now want to run a planned failover. Which of the following steps is the correct starting point?

- A. Right-click the primary VM and select Replication > Planned Failover
- B. Right-click the replica VM and select Replication > Planned Failover
- C. Right-click the primary VM and select Replication > Extend Replication
- D. Right-click the replica VM and select Replication > Test Failover

Answer: A

NEW QUESTION 151

Nano Server is foundational to the modern datacenter and is useful in two core scenarios: As a private cloud infrastructure it's particularly useful for clustered Hyper-V, clustered storage and core networking services scenarios; or as an application platform it's highly optimized for modern distributed and cloud-based apps which leverage containers and micro service architectures.

Is the following statement TRUE or FALSE?

A local interface with UI support is available for offline management of Nano Servers?

- A. TRUE
- B. FALSE

Answer: B

Explanation:

A local interface with UI support is NOT available for Nano servers. You must administer them remotely using PowerShell.

NEW QUESTION 153

Which terminology is being described below?

Time synchronization is critical for the proper operation of many Windows services and line- ofbusiness applications. The uses the Network Time Protocol (NTP) to synchronize computer clocks on the network so that an accurate clock value, or time stamp, can be assigned to network validation requests and resource access requests.

- A. Network Services Shell (Netsh)
- B. Listsvc
- C. Fixmbr
- D. Windows Time service (W32time)

Answer: D

Explanation:

The correct answer is Windows Time service (W32time)

NEW QUESTION 156

You have two Hyper-V hosts named Server1 and Server2 that run Windows Server 2016. Server1 hosts a virtual machine named VM1 that is in a Running state. On Server1, you export VM1 and then you import VM1 on Server2. What is the current state of VM1 on Server2?

- A. Paused
- B. Off
- C. Saved
- D. Running

Answer: C

Explanation:

References: <https://blog.workinghardinit.work/2016/06/16/live-export-a-running-virtual-machine-or-a-checkpoint/>

NEW QUESTION 158

HOTSPOT

You have a four-node Hyper-V cluster named Cluster1.

A virtual machine named VM1 runs on Cluster1. VM1 has a network adapter that connects to a virtual switch named Network1.

You need to prevent a network disconnection on VM1 from causing VM1 to move to another cluster node.

What command should you run? To answer, select the appropriate options in the answer area.

Answer Area

```
Remove-ClusterVMMonitoredItem -VirtualMachine VM1
Set-VM -VMName VM1
Set-VMNetworkAdapter -VMName VM1
Set-VMSwitch -Name Network1
```

```
EventSource Network
-lovInterruptModeration Off
-lovWeight 1
-NotMonitoredInCluster $true
-RouterGuard Off
```

- A. Mastered
- B. Not Mastered

Answer: A

Explanation:

Answer Area

```
Remove-ClusterVMMonitoredItem -VirtualMachine VM1
Set-VM -VMName VM1
Set-VMNetworkAdapter -VMName VM1
Set-VMSwitch -Name Network1
```

```
EventSource Network
-lovInterruptModeration Off
-lovWeight 1
-NotMonitoredInCluster $true
-RouterGuard Off
```

NEW QUESTION 159

You plan to install a Nano Server on a physical server named Nano1. Nano1 will host several virtual machines that will use live migration. Which package should you install on Nano1?

- A. Microsoft-NanoServer-SecureStartup-Package
- B. Microsoft-NanoServer-ShieldedVM-Package
- C. Microsoft-NanoServer-Compute-Package
- D. Microsoft-NanoServer-FailoverCluster-Package
- E. Microsoft-NanoServer-Storage -Package

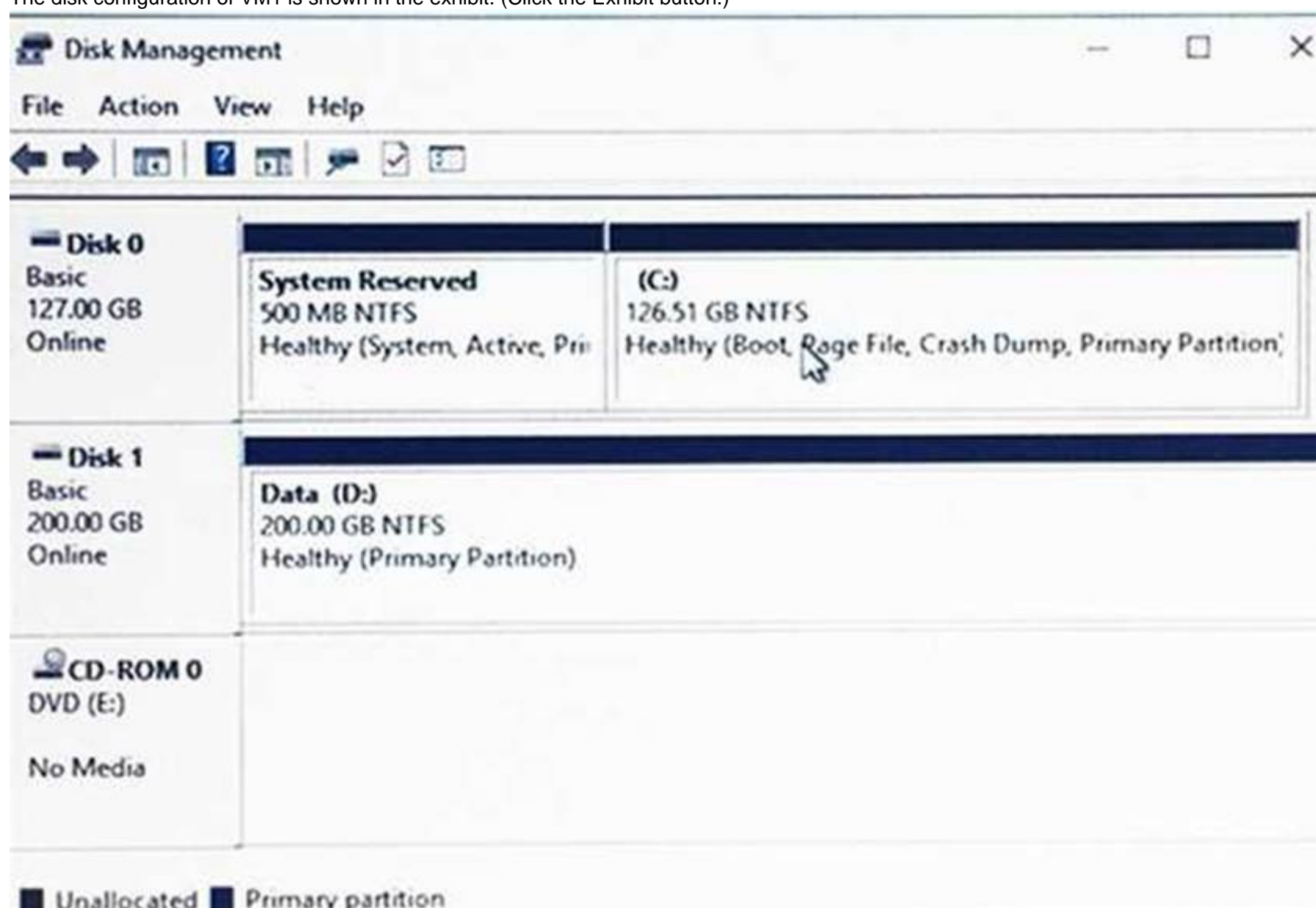
Answer: C

NEW QUESTION 160

DRAG DROP

You have a Hyper-V host named Server1 that runs Windows Server 2016. Server1 hosts a virtual machine named VM1. VM1 runs Windows Server 2016. VM1 uses a VHD for storage.

The disk configuration of VM1 is shown in the exhibit. (Click the Exhibit button.)



You need to increase the size of volume D to 400 GB.

Which cmdlets should you run on Server1 and VM1? To answer, drag the appropriate cmdlets to the correct servers. Each cmdlet may be used once, more than once, or not at all. You may need to drag the split bar between panes or scroll to view content.

NOTE: Each correct selection is worth one point.

Cmdlets

Resize-Partition

Resize-VHD

Resize-VirtualDisk

Set-VHD

Set-Volume

Answer Area

Cmdlet to run on Server1:

Cmdlet

Cmdlet to run on VM1:

Cmdlet

- A. Mastered
 B. Not Mastered

Answer: A

Explanation:

Cmdlets

Resize-Partition

Resize-VHD

Resize-VirtualDisk

Set-VHD

Set-Volume

Answer Area

Cmdlet to run on Server1:

Resize-VHD

Cmdlet to run on VM1:

Resize-Partition

NEW QUESTION 161

You have a Hyper-V failover cluster that contains three nodes. Virtual machines are distributed evenly across the cluster nodes. You need to ensure that if a node loses connectivity from the other nodes, the virtual machines on the node will be transitioned to one of the remaining nodes after one minute. Which settings should you modify?

- A. QuarantineDuration and QuarantineThreshold
 B. SameSubnetDelay and CrossSubnetDelay
 C. QuorumArbitrationTimeMax and RequestReplyTimeout
 D. ResiliencyPeriod and ResiliencyLevel

Answer: C

Explanation:

References: [https://msdn.microsoft.com/en-us/library/aa369123\(v=vs.85\).aspx](https://msdn.microsoft.com/en-us/library/aa369123(v=vs.85).aspx) [https://msdn.microsoft.com/en-us/library/bb394696\(v=vs.85\).aspx](https://msdn.microsoft.com/en-us/library/bb394696(v=vs.85).aspx)

NEW QUESTION 165

You have a Hyper-V host that runs Windows Server 2016. You need to identify the amount of processor resources consumed by Hyper-V and virtual machines. Which counter should you use from Performance Monitor?

- A. \Hyper-V Hypervisor\Logical Processor
 B. \Hyper-V Hypervisor Root Virtual Processor(_Total)\% Guest Run Time
 C. \Hyper-V Hypervisor Virtual Processor(_Total)\% Hypervisor Run Time
 D. \Hyper-V Hypervisor Virtual Processor(_Total)\% Total Run Time

E. \Hyper-V Hypervisor Logical Processor(_Total)\% Total Run Time

Answer: A

Explanation:

References:

[https://msdn.microsoft.com/en-us/library/cc768535\(v=bts.10\).aspx](https://msdn.microsoft.com/en-us/library/cc768535(v=bts.10).aspx)

NEW QUESTION 166

You have a server named Server1 that runs Windows Server 2016.

On Server1, you use the Basic template to create a new Data Collector Set named CollectorSet1. You need to configure CollectorSet1 to generate performance alerts.

What should you do before you start CollectorSet1?

- A. Modify the performance counter data collector of CollectorSet1.
- B. Add a new data collector to CollectorSet1.
- C. Modify the configuration data collector of CollectorSet1.
- D. Add a new task to CollectorSet1.

Answer: A

Explanation:

[https://technet.microsoft.com/en-us/library/cc722414\(v=ws.11\).aspx](https://technet.microsoft.com/en-us/library/cc722414(v=ws.11).aspx)

NEW QUESTION 170

You have a server named Server1 that runs Windows Server 2016. Server1 is a member of contoso.com. Server1 has the Hyper-V role installed. Virtual machines on Server1 are connected to an external switch named Switch1.

You create a virtual machine named VM1 on Server1 by running the following cmdlets.

```
Add-VM VM1
Add-VMHardDiskDrive -VMName VM1 -ControllerType IDE -Path c:\VMs\Disk1.vhd
Add-VMNetworkAdapter -VMName VM1
```

You need to ensure that you can install the operating system on VM1 by using Windows Deployment Services.

What should you do?

- A. Modify the SwitchType parameter of Switch1.
- B. Modify the DefaultFlowMinimumBandwidthWeight parameter of Switch1.
- C. Add a SCSI controller to VM1.
- D. Add a legacy network adapter to VM1.

Answer: D

NEW QUESTION 175

You have a Hyper-V host named Server1 that runs Windows Server 2016. Server1 hosts a virtual machine named VM1 that runs Windows Server 2016. You install the Hyper-V server role on VM1.

You need to ensure that the virtual machines hosted on VM1 can communicate with the virtual machines hosted on Server1.

What should you do?

- A. On Server1, run the Set-VmNetworkAdapterIsolation cmdlet and specify the –MultiTenantStack Off parameter.
- B. On VM1, run the Set-VMNetworkAdapter cmdlet and specify the –MacAddressSpoofing Off parameter.
- C. On VM1, run the Set-VmNetworkAdapterIsolation cmdlet and specify the –MultiTenantStack On parameter.
- D. On Server1, run the Set-VMNetworkAdapter cmdlet and specify the –MacAddressSpoofing On parameter.

Answer: C

Explanation:

References: <https://docs.microsoft.com/en-us/powershell/module/hyper-v/set-vmnetworkadapterisolation?view=win10-ps>

NEW QUESTION 180

Note: This question is part of a series of questions that present the same scenario. Each question in the series contains a unique solution that might meet the stated goals. Some question sets might have more than one correct solution, while others might not have a correct solution.

You have a server named Server1 that runs Windows Server 2016. Server1 hosts a line-of-business application named App1. App1 has a memory leak that occasionally causes the application to consume an excessive amount of memory.

You need to log an event in the Application event log whenever App1 consume more than 4 GB of memory.

Solution: You create a performance counter data collector. Does this meet the goal?

- A. Yes
- B. No

Answer: B

NEW QUESTION 184

DRAG DROP

Your network contains an Active Directory domain named contoso.com. The domain contains a server named Server1 that runs Windows Server 2016.

Server1 allows inbound connectivity from all computers in the contoso.com domain. Server1 has an IP address of 192.168.0.10.

Server1 hosts a Windows container named Container1. Container1 hosts a website that is accessible on port 80. You need to ensure that you can use the Docker(?) client to manage Container1 from any computer in the domain. Which four cmdlets should you run in sequence? To answer, move the appropriate cmdlets from the list of cmdlets to the answer area and arrange them in the correct order.

Restart-Service docker

New-ContainerNetwork- Name nat1 – Mode NAT- SubnetPrefix 192.168.0.0/24 – GatewatAddress 192.168.0.10

Add-Content 'c:\programdata\docker\config\daemon.json' '{"hosts": [{"tcp://127.0.0.1:80", "npipe://"}]}'

Add-Content 'c:\programdata\docker\config\daemon.json' '{"hosts": [{"tcp://0.0.0.0:2375", "npipe://" }]}'

New-Item-Type File c:\programData\docker\confing\daemon.json

Answer Area

>

<

^

v

- A. Mastered
- B. Not Mastered

Answer: A

Explanation:

New-Item-Type File
c:\programData\docker\confing\daemon.json

Add-Content
'c:\programdata\docker\config\daemon.json'
{'hosts': [{"tcp://0.0.0.0:2375", "npipe://" }]}'

Restart-Service docker

New-ContainerNetwork- Name nat1 – Mode NAT- SubnetPrefix 192.168.0.0/24 – GatewatAddress 192.168.0.10

NEW QUESTION 187

DRAG DROP

You have a server named Server1 that runs Windows Server 2016. On Server1, you create a Nano Server image named Disk1.vhdx. You need to start Server1 by using Disk1.vhdx.

Which three actions should you perform in sequence? To answer, move the appropriate actions from the list of actions to the answer area and arrange them in the correct order.

Actions

Restart Server1.

Run the bcdboot.exe command.

Run the bootcfg.exe command.

Run the **Edit-NanoServerImage** cmdlet.

Mark a partition as active.

Mount Disk1.vhdx.

Answer Area



- A. Mastered
- B. Not Mastered

Answer: A

Explanation:

Actions

Restart Server1.

Run the bcdboot.exe command.

Run the bootcfg.exe command.

Run the **Edit-NanoServerImage** cmdlet.

Mark a partition as active.

Mount Disk1.vhdx.

Answer Area

Mount Disk1.vhdx.

Run the bootcfg.exe command.

Restart Server1.



NEW QUESTION 189

You have a Windows Server 2016 failover cluster named Cluster1 that contains three nodes named Server1, Server2, and Server3. Each node hosts several virtual machines. The virtual machines are configured to fail over to another node in Cluster1 if the hosting node fails. You need to ensure that if the Cluster service fails on one of the nodes, the virtual machine of that node will fail over immediately. Which setting should you configure?

- A. FailureConditionLevel
- B. QuarantineDuration
- C. ResiliencyPeriod
- D. ResiliencyLevel

Answer: D

Explanation:

References:

<https://blogs.msdn.microsoft.com/clustering/2015/06/03/virtual-machine-compute-resiliency-in-windows-server-2016/>

NEW QUESTION 191

HOTSPOT

You plan to deploy three servers named Server1, Server2, and Server3 that will run Windows Server 2016. The servers will have the following disk configurations:
 Server1 will have a C: drive of 2 TB.
 Server2 will have two disks. The C: drive will be 2 TB. The D: drive will be 1TB. D: must support file system-based compression.
 Server3 will have two disks. The C: drive will be 2 TB. The D: drive will be 1TB and must support file- system based quotas.
 Which file system can you use for each drive? To answer, select the appropriate options in the answer area.

Answer Area

C: on all servers:

	▼
NTFS only	
ReFS only	
Either NTFS or ReFS	

D: on Server2:

	▼
NTFS only	
ReFS only	
Either NTFS or ReFS	

D: on Server3:

	▼
NTFS only	
ReFS only	
Either NTFS or ReFS	

- A. Mastered
- B. Not Mastered

Answer: A

Explanation:

Answer Area

C: on all servers:

	▼
NTFS only	
ReFS only	
Either NTFS or ReFS	

D: on Server2:

	▼
NTFS only	
ReFS only	
Either NTFS or ReFS	

D: on Server3:

	▼
NTFS only	
ReFS only	
Either NTFS or ReFS	

NEW QUESTION 194

You have two servers named Server1 and Server2 that run Windows Server 2016. Server1 contains a volume named Volume1. You implement a Storage Replica that replicates the contents of Volume1 from Server1 to Server2. Server1 fails. From Server2, you need to ensure that you can access the contents of Volume1. What should you run?

- A. Update-StoragePool
- B. Set-SRPartnership

- C. vssadmin revert shadow
D. Clear-FileStorageTier

Answer: B

Explanation:

References:

<https://docs.microsoft.com/en-us/windows-server/storage/storage-replica/server-to-server-storage-replication>

NEW QUESTION 196

HOTSPOT

Note: This question is part of a series of questions that use the same scenario. For your convenience, the scenario is repeated in each question. Each question presents a different goal and answer choices, but the text of the scenario is exactly the same in each question in this series.

Your network contains an Active Directory domain named contoso.com. The functional level of the forest and the domain is Windows Server 2008 R2. All servers in the domain run Windows Server 2016 Standard. The domain contains 300 client computers that run either Windows 8.1 or Windows 10.

The domain contains nine servers that are configured as shown in the following table.

Name	Configuration	Planned changes
Server1	Domain controller	<i>None</i>
Server2	File server	Run Failover Clustering and Storage Spaces Direct
Server3	File server	Run Failover Clustering and Storage Spaces Direct
Server4	Hyper-V host	Run shielded virtual machines
Server5	Hyper-V host	<i>None</i>
Server6	Member server	Run Active Directory Federation Services (AD FS)
VM1	Virtual machine hosted on Server5	<i>None</i>
VM2	Virtual machine hosted on Server5	<i>None</i>
VM3	Virtual machine hosted on Server5	<i>None</i>

The virtual machines are configured as follows:

Each virtual machine has one virtual network adapter.

VM1 and VM2 are part of a Network Load Balancing (NLB) cluster.

All of the servers on the network can communicate with all of the virtual machines. For VM1 and VM2, you plan to use live migration between Server4 and Server5.

You need to ensure that when the virtual machines migrate, they maintain connectivity to the network.

Which virtual switch names and connection types should you use on each server? To answer, select the appropriate options in the answer area.

Answer Area

Virtual switch connection type on Server4:

▼

External network

Internal network

Private network

Virtual switch connection type on Server5:

▼

External network

Internal network

Private network

Virtual switch name on Server4:

▼

External on Server4

Network switch

Server4

Virtual switch name on Server5:

▼

External on Server5

Network switch

Server5

- A. Mastered
B. Not Mastered

Answer: A

Explanation:

Answer Area

Virtual switch connection type on Server4:

▼

External network

Internal network

Private network

Virtual switch connection type on Server5:

▼

External network

Internal network

Private network

Virtual switch name on Server4:

▼

External on Server4

Network switch

Server4

Virtual switch name on Server5:

▼

External on Server5

Network switch

Server5

NEW QUESTION 200

Note: This question is part of a series of questions that present the same scenario. Each question in the series contains a unique solution that might meet the stated goals. Some question sets might have more than one correct solution, while others might not have a correct solution.

After you answer a question in this section, you will NOT be able to return to it. As a result, these questions will not appear in the review screen.

You network contains an Active Directory domain named contoso.com.

You need to create a Nano Server image named Nano1 that will be used as a virtualization host. The Windows Server 2016 source files are located in drive D.

Solution: You run the following cmdlet.

```
New-NanoServerImage -Edition Datacenter -DeploymentType Host -Compute
-MediaPath 'D:\' -TargetPath C:\Nano1\Nano1.wim -ComputerName Nano1
-DomainName Contoso.com
```

Does this meet the goal?

- A. Yes
- B. No

Answer: A

NEW QUESTION 205

Note: This question is part of a series of questions that present the same scenario. Each question in the series contains a unique solution that might meet the stated goals. Some question sets might have more than one correct solution, while others might not have a correct solution.

After you answer a question in this section, you will NOT be able to return to it. As a result, these questions will not appear in the review screen.

You are a server administrator at a company named Contoso, Ltd.

Contoso has a Windows Server 2016 Hyper-V environment configured as shown in the following table.

Hyper-V host name	Configuration	Virtual switch name
Host1	- Uses an Intel processor - Is a member of a SAN named SAN1	Switch1
Host2	- Uses an AMD processor - Has local storage only	Switch2
Host3	- Uses an Intel processor - Is a member of a SAN named SAN1	Switch1
Host4	- Uses an Intel processor - Has local storage only	Switch2

All of the virtual switches are of the external type.

You need to ensure that you can move virtual machines between the hosts without causing the virtual machines to disconnect from the network.

Solution: You implement live migration by using Host2 and Host4. Does this meet the goal?

- A. Yes
- B. No

Answer: A

NEW QUESTION 207

Note: This question is part of a series of questions that present the same scenario. Each question in the series contains a unique solution that might meet the stated goals. Some question sets might have more than one correct solution, while others might not have a correct solution.

After you answer a question in this section, you will NOT be able to return to it. As a result, these questions will not appear in the review screen.

After you answer a question in this section, you will NOT be able to return to it. As a result, these questions will not appear in the review screen.

Your network contains an Active Directory domain. The domain contains a new file server named Server1 that runs a Server Core installation of Windows Server 2016.

Server1 has an ReFS-formatted volume D: and an NTFS-formatted volume E:. the volumes do not contain any data.

You install the Data Deduplication role service on Server1.

You need to implement Data Deduplication for volumes on D: and E:.

Solution: From Windows PowerShell, you run Format-Volume D: -Filesystem NTFS and Enable-DeDupVolume-Volume D:,E:.

Does this meet the goal?

- A. Yes
- B. No

Answer: A

NEW QUESTION 212

Note: This question is part of a series of questions that present the same scenario. Each question in the series contains a unique solution that might meet the stated goals. Some question sets might have more than one correct solution, while others might not have a correct solution.

After you answer a question in this section, you will NOT be able to return to it. As a result, these questions will not appear in the review screen.

You have a server named Server1 that runs Windows Server 2016.

You plan to use Windows Server Backup to back up all of the data on Server1. You create a new volume on Server1.

You need to ensure that the new volume can be used as a backup target. The backup target must support incremental backups.

Solution: You assign a drive letter to the volume, and you format the volume by using ex FAT. Does this meet the goal?

- A. Yes
- B. No

Answer: B

NEW QUESTION 215

Your network contains an Active Directory domain named contoso.com. All servers run Windows

Server 2016. As a domain administrator, you log on to a server named Server2 and open Windows Power Shell. You need to establish an interactive Power Shell session to a server named Server1. Which command should you run?

- A. Enable-PSRemoting Server1
- B. Enter-PSSession -ComputerName Server1
- C. New-PSSession -Name Server1
- D. Set-PSSessionConfiguration -AccessMode Remote -Name Server1

Answer: B

NEW QUESTION 220

DRAG DROP

On a new server, you install Windows Server 2016, and then you install the Hyper-V server role.

You need to ensure that you can deploy Windows containers that use an image of the Server Core installation of Windows Server.

Which four commands should you use in sequence? To answer, move the appropriate commands from the list of commands to the answer area and arrange them

in the correct order.

Commands

```
Install-Package -Name docker -ProviderName  
DockerMsftProvider
```

```
Restart-Computer -Force
```

```
docker pull docker/windows-x64
```

```
Set-VMProcessor -ExposeVirtualizationExtensions  
$true
```

```
Install-Module -name DockerMsftProvider  
Repository PSGallery -Force-
```

```
docker pull Microsoft/windowsservercore
```

```
Install-Package -Name Microsoft/dotnet  
framework-docker -ProviderName-  
DockerMsftProvider
```

```
Install-WindowsFeature Hyper-V
```

Answer Area

1

2

3

4



- A. Mastered
 B. Not Mastered

Answer: A

Explanation:

References: <https://docs.microsoft.com/en-us/virtualization/windowscontainers/deploy-containers/deploy-containers-on-server>

NEW QUESTION 225

Note This question is part of a series of questions that use the same scenario. For your convenience, the scenario is repeated in each question. Each question presents a different goal and answer choices, but the text of the scenario is exactly the same in each question in this series.

Start of Repeated Scenario:

A company named Contoso, Ltd. has several servers that run Windows Server 2016 Contoso has a Hyper V environment that uses failover clustering and Windows Server Update Services (WSUS). The environment contains several Windows containers and several virtual machines.

The WSUS deployment contains one upstream server that is located on the company's perimeter network and several downstream servers located on the internal network, A firewall separates the upstream server from the downstream servers.

You plan to deploy a human resources application to a new server named HRServer5. HRServer5 contains a FAT32-formatted data volume.

The CIO of Contoso identifies the following requirements for the company's IT department:

- Deploy failover cluster to two new virtual machines.
- Store all application databases by using Encrypted File System (EFS).
- Ensure that each Windows container has a dedicated IP address assigned by a DHCP server
- Produce a report that lists the processor time used by all of the processes on a server named Server 1 for five hour.

Encrypt all communication between the internal network and the perimeter network, including all WSUS communications.

- Automatically load balance the virtual machines hosted in the Hyper-V cluster when processor utilization exceeds 70 percent.

End of Repeated Scenario.

You need to modify the Hyper V cluster to meet the load balancing requirement for the virtual machine. Which command should you run?

- A. Create a firewall rule 10 allow TCP port 443.
 B. Create a firewall rule to allow TCP port 8531.
 C. Require- SSI Oil the Client WebService virtual directory.
 D. Require SSI on the Inventory virtual directory.

Answer: D

NEW QUESTION 229

You have a Windows Server 2016 fail over cluster named that contains four nodes named Server 1, Server2. Server3. sod Seiver4. Cluster1 hosts 40 virtual machines that are distributed evenly across the nodes.

Server 1 and Server2 are located in a data center in Madrid. Server1 and Server4 are located In a d.ita center in Barcelona.

You need lo entire that when you pause a node, the clustered virtual machines will always attempt to move automatically to another node in the same data center before attempting to move to a node In the other data center.

Which two actions should you perform?

Each correct answer present part of the solution.

- A. Run the New-ClusterFaultDomain cmdlet.
- B. Configure a file share witness for each data center.
- C. Orate on Active Directory site for cacti data center.
- D. Run the Set-Cluster FaultDomain cmdlet.
- E. Run the Add-ClusterGroup cmdlet.
- F. Change the quorum configuration of the cluster to Node Majority.

Answer: CE

NEW QUESTION 233

Your network contains three Hyper-V hosts. You add all of the hosts to a cluster.
You need to create highly available storage spaces that connect to directly attached storage on the hosts.
Which cmdlet should you use?

- A. Enable-CluslerStorageSpacesDirctt
- B. Update-CluslerVirtualMachineConfiguration
- C. Add-CluslerDisk
- D. Set-Storage Pool

Answer: A

NEW QUESTION 234

You have a Windows Server 2016 failover cluster named Ousted that contains three nodes named Server 1, Server 2, and Server 3. Each node hosts several virtual machines. the virtual machines are configured to fail over to another node in Ousted if the hosting node tails.
You need to ensure that it if the Cluster service tails on one of the nodes, the virtual machine of that node will fail over immediately.
Which setting should you configure?

- A. failureConditionLevel
- B. QuarantineDuration
- C. Resiliency Period
- D. ResiliencyLevel

Answer: B

NEW QUESTION 239

DRAG DROP

You have a server named Server1 that runs Windows Server 2016.
You open a command prompt on Server1 and run the following commands.

C:\>diskpart

Microsoft DiskPart version 10.0.14393.0

Copyright (c) 1999-2013 Microsoft Corporation.

On computer: SERVER1

DISKPART> list disk

Disk ###	Status	Size	Free	Dyn	Gpt
Disk 0	Online	127 GB	0 B		
Disk 1	Online	1800 GB	0 B		

DISKPART> select disk 1

Disk 1 is now the selected disk.

DISKPART> list partition

Partition ###	Type	Size	Offset
Partition 1	Primary	1799 GB	1024 KB

You back up the data on Disk 1.

You plan to convert Disk 1 to a GPT disk, and then to restore the data to Disk 1.

Which four DiskPart commands should you run in sequence before you restore the data? To answer, move the appropriate commands from the list of commands to the answer area and arrange them in the correct order.

Commands

Answer Area

convert dynamic

select disk 1

format fs=ntfs

create partition logical

create partition primary

convert gpt

clean



- A. Mastered
- B. Not Mastered

Answer: A

Explanation:

References: <https://www.remotesoftware.com/info/convert-gpt-mbr-without-data-loss> <https://docs.microsoft.com/en-us/windows-server/administration/windows-commands/create-partition-primary>

NEW QUESTION 244

You have two Hyper-V hosts named Server1 and Server2 that run Windows Server 2016. The hosts are nodes in failover cluster. A highly available virtual machine named VM1 is running on Server1. You need to move VM1 to Server2 while minimizing downtime. What should you do?

- A. From Windows PowerShell, run Move-ClusterGroup
- B. From Hyper-V Manager, use the Move action.
- C. From Failover Cluster Manager, use the Move Virtual Machine Storage option.
- D. From Windows PowerShell, run Move-VM.

Answer: A

NEW QUESTION 248

You have a server named Server1 that runs Windows Server 2016. The Docker daemon run on Server1. You need to ensure that members of a security group named Docker Administrators administer Docker. What should you do?

- A. Run the Set-Service cmdlet.
- B. Run the sc config command.
- C. Modify the Security settings of Docker
- D. Modify the Security settings of Docker.exe.

Answer: B

Explanation:

<https://docs.microsoft.com/en-us/virtualization/windowscontainers/manage-docker/configure-docker-daemon>

NEW QUESTION 249

HOTSPOT

You have a server named Server1 that runs Windows Servers 2016. Server1 has a storage array that contains multiple storage enclosures. The storage hardware supports enclosure awareness. You need to implement Storage Spaces on Server1. Storage Spaces must remain available if two enclosures fail. The solution must minimize the number of enclosures required and must provide the fastest possible write performance. Which configurations should you use? To answer, select the appropriate options in the answer area. NOTE: Each correct selection is worth one point.

Answer Area

Resiliency type:	<div><div></div><div>Dual parity</div><div>Single parity</div><div>Three-way mirror</div><div>Two-way mirror</div></div>
Number of enclosures:	<div><div></div><div>3</div><div>4</div><div>5</div><div>6</div></div>

- A. Mastered
- B. Not Mastered

Answer: A

Explanation:

References: <https://docs.microsoft.com/en-us/windows-server/storage/storage-spaces/storage-spaces-fault-tolerance#summary>

NEW QUESTION 252

You have a Hyper-V host named Server1 that runs Windows Server 2016. Server1 host a virtual machine named VM1. VM1 has the following settings: Nested virtualization is enabled.

Dynamic Memory is disabled. VM1 is currently running.

You need to adjust the amount of memory assigned to VM1 as quickly as possible. What should you do first?

- A. Change the memory buffer setting of VM1.
- B. Pause VM1.
- C. Shut down VM1.
- D. Enable Dynamic Memory for VM1.

Answer: D

NEW QUESTION 256

DRAG DROP

Your network contains an Active Directory domain named contoso.com. The domain has two clusters named FC1 and FC2.

The domain contains servers that run Windows Server 2016. The Servers are configured as shown in the following table.

Server name	Processor	Memory	Cluster
Server1	Intel Xeon E3	128 GB	FC1
Server2	Intel Xeon E3	128 GB	FC1
Server3	Intel Xeon E3	256 GB	FC2
Server4	Intel Xeon E3	256 GB	FC2

Server1 hosts a highly available virtual machine named VM1.

You need to move VM1 from Server1 to Server3 by using live migration.

Which three actions should you perform in sequence? To answer, move the appropriate actions from the list of actions to the answer area and arrange them in the correct order.

Actions

Answer Area

- Add the Virtual Machine role
- Add the Hyper-V Replica Broker role to FC1 and FC2
- Remove VM1 from FC1
- Perform live migration from Failover Cluster Manager
- Perform live migration from Hyper-V Manager



- A. Mastered
- B. Not Mastered

Answer: A

Explanation:

References: <http://www.checkyourlogs.net/?p=16401>

NEW QUESTION 261

NOTE: This Question is a part of a series of questions that use the same or similar answer choices. An answer choice may be correct for more than one question in the series Each question is independent of the other questions in this series. Information and details provided in a question apply only to that question.

You have two- node Hyper-V cluster named Cluster1. A virtual machine named VM1 runs on Cluster1.

You need to configure monitoring of VM1. The solution must move VM1 to a different node if the Print Spooler service on VM1 stops unexpectedly.

Which tool should you use?

- A. the clussvc.exe command
- B. the cluster.exe command
- C. the computer Management snap-in
- D. the configurehyper.exe command
- E. the Disk Management snap-in
- F. the Failover Cluster Manager snap-in
- G. the Hyper-V Manager snap-in
- H. the Server Manager app

Answer: F

NEW QUESTION 263

You have a server named Server1 that runs Windows Server 2016. Server1 has four SCSI disks and a storage pool named Pool1 that contains three disks. You create a virtual disk named Disk 1 that uses a mirrored layout. You create a partition named Partition1 that uses all of the available space on Disk 1. You need to extend Partition1. What should you do first?

- A. From Windows PowerShell, run the Resize-Partition cmdlet.
- B. From Disk Management, modify the properties of Partition1.
- C. From the Storage Pools page in Server Manager, extend a virtual disk.
- D. From Disk Management, extend a volume.

Answer: C

Explanation:

References: <https://charbelnemnom.com/2015/03/step-by-step-how-to-extend-and-resize-a-two-way-mirrored-storage-tiered-space-storagespaces-ws2012r2/>

NEW QUESTION 265

You have a server named Server1 that runs Windows Server 2016. The server has an application named App1. App1 writes entries to the Application event log when errors are encountered. The events have IDs of either 111 or 112. You need to restart the service whenever either of these events is logged. What should you do?

- A. From Windows PowerShell, run the Write-EventLog cmdlet and specify the-EventID parameter and the -Source parameter.
- B. From Event Viewer, create a custom view that has a filter for the event IDs.
- C. From Event Viewer, create a subscription that has a filter for the event IDs.
- D. From Task Scheduler, use Create Task to create one task that includes triggers for both event IDs.
- E. From Windows PowerShell, run the Get-SMSEvent cmdlet and pipe the output to the Start-NetEventSession cmdlet.
- F. From Performance Monitor, add an Event Trace Session data collector that uses the Microsoft-Windows-Eventlog provider.

Answer: D

NEW QUESTION 266

You have a file server named Server1 that runs Windows Server 2016. Object access auditing is configured on Server1. You need to filter the Security event log to show all log entries that relate to a user named User1. What should you do?

- A. Right-click the Security log, and then click Filter Current Log... On the Filter tab, type a value in the User box.
- B. Right-click the Security log, and then click Filter Current Log... On the Filter tab, select a value from the Event sources box.
- C. Right-click the Security log, and then click Create Custom View... On the Filter tab, type a value in the User box.
- D. Right-click the Security log, and then click Filter Current Log... On the XML tab, modify the QueryList entry and set an EventData tag.

Answer: A

Explanation:

Right clicking the event log name and selecting the "Filter Current Log" will display various options for filtering the event log. These options are:

References: <https://blogs.technet.microsoft.com/rmilne/2014/08/06/quick-tip-event-viewer-filtering/>

NEW QUESTION 270

Your network contains an Active Directory domain named contoso.com. The domain contains a Hyper-V host named Server1 that runs Windows Server 2016. Server1 hosts four virtual machines that are members of the domain. The virtual machines are configured as shown in the following table.

Virtual machine name	Operating system	Virtual machine generation	Type of VHD file
VM1	Windows 10	2	VHD
VM2	Windows Server 2016	2	VHD
VM3	Windows Server 2012 R2	2	VHDX
VM4	Windows Server 2016	1	VHDX

Which virtual machines can you manage by using PowerShell Direct?

- A. VM1, VM2, and VM3
- B. VM1, VM2, and VM4
- C. only VM2
- D. only VM4

Answer: B

Explanation:

To use PowerShell Direct, the host operating system must run at least Windows 10 or Windows Server 2016.

References: <https://docs.microsoft.com/en-us/windows-server/virtualization/hyper-v/manage/manage-windows-virtual-machines-with-powershell-direct#whats-required-to-use-powershell-direct>

NEW QUESTION 275

Note: This question is part of a series of questions that present the same scenario. Each question in the series contains a unique solution that might meet the stated goals. Some question sets might have more than one correct solution, while others might not have a correct solution.

After you answer a question in this section, you will NOT be able to return to it. As a result, these questions will not appear in the review screen.

You network contains an Active Directory forest named contoso.com. The forest contains a child domain named eu.contoso.com.

You plan to implement live migration between two Hyper-V hosts that run Windows Server 2016. The hosts are configured as shown in the following table.

Host name	Configuration
Host1	<ul style="list-style-type: none"> Is a member of the contoso.com domain Uses an Intel Xeon processor released in 2012 Has an external virtual switch named Switch1 Hosts a virtual machine named VM1 that connects to Switch1
Host2	<ul style="list-style-type: none"> Is a member of the eu.contoso.com domain Uses an Intel Xeon processor released in 2016 Has an external virtual switch named Switch1

You need to ensure that you can perform a live migration of VM1 from Host1 to Host2.

Solution: You shut down VM1, configure the processor compatibility settings, and then start VM1. Does meet the goal?

- A. Yes
- B. No

Answer: A

NEW QUESTION 278

Note: This question is part of a series of questions that use the same scenario. For your convenience, the scenario is repeated in each question. Each question presents a different goal and answer choices, but the text of the scenario is exactly the same in each question in this series.

A company named Contoso, Ltd. has several servers that run Windows Server 2016. Contoso has a Hyper-V environment that uses failover clustering and Windows Server Update Services (WSUS). The environment contains several Windows containers and several virtual machines.

The WSUS deployment contains one upstream server that is located on the company's perimeter network and several downstream servers located on the internal network. A firewall separates the upstream server from the downstream servers.

You plan to deploy a human resources application to a new server named HRServer5. HRServer5 contains a FAT32-formatted data volume.

The CIO of Contoso identifies the following requirements for the company's IT department:

Which two actions should you perform to meet the encryption requirement for WSUS? Each correct answer presents part of the solution.

- A. Require SSL on the Inventory virtual directory.
- B. Require SSL on the ClientWebService virtual directory.
- C. Create a firewall rule to allow TCP port 443.
- D. Create a firewall rule to allow TCP port 8531.

Answer: BC

Explanation:

References:

<https://technet.microsoft.com/en-us/library/bb633246.aspx> https://en.wikipedia.org/wiki/List_of_TCP_and_UDP_port_numbers

NEW QUESTION 280

You have a server named Server1 that runs Windows Server 2016. Server1 has two network adapters that support single root I/O virtualization (SR-IOV). The network adapters are from two different vendors.

You plan to install the Hyper-V server role on Server1, and then to create a virtual machine named VM1 that runs Windows Server 2016. VM1 will use SR-IOV.

You need to ensure that VM1 can use both network adapters for load balancing and failover. What should you do?

- A. On Server1, create two virtual switches without embedded teamin
- B. On VM1, create one NIC team.
- C. On Server1, create one virtual switch without embedded teamin
- D. On VM1, create one NIC team.
- E. On Server1, create one NIC tea
- F. On VM1, create one NIC team.
- G. On Server1, create one virtual switch that has embedded teamin
- H. On VM1, create two NIC teams.

Answer: A

NEW QUESTION 285

You have a server named Server1 that runs Windows Server 2016.

The server has an application named App1. App1 writes entries to the Application event log when errors are encountered. The events have IDs of either 111 or 112.

You need to restart the service whenever either of these events is logged. What should you do?

- A. From Windows PowerShell, run the Get-SMSEvent cmdlet and pipe the output to the Start-NetEventSession cmdlet.
- B. From Event Viewer, create a subscription that has a filter for the event IDs.
- C. From Event Viewer, use the Create Basic Task Wizard for each event ID.
- D. From Windows PowerShell, run the Get-Event cmdlet and pipe the output to the Start-NetEventSession cmdlet.

Answer: C

NEW QUESTION 288

.....

THANKS FOR TRYING THE DEMO OF OUR PRODUCT

Visit Our Site to Purchase the Full Set of Actual 70-740 Exam Questions With Answers.

We Also Provide Practice Exam Software That Simulates Real Exam Environment And Has Many Self-Assessment Features. Order the 70-740 Product From:

<https://www.2passeasy.com/dumps/70-740/>

Money Back Guarantee

70-740 Practice Exam Features:

- * 70-740 Questions and Answers Updated Frequently
- * 70-740 Practice Questions Verified by Expert Senior Certified Staff
- * 70-740 Most Realistic Questions that Guarantee you a Pass on Your FirstTry
- * 70-740 Practice Test Questions in Multiple Choice Formats and Updatesfor 1 Year