

# Nutanix

## Exam Questions NCA-5.20

Nutanix Certified Associate (NCA) 5.20 Exam



**NEW QUESTION 1**

A developer requests that a VM connects to a block device from an older iSCSI disk array, in order to support an application being transitioned to Nutanix. What should the Nutanix administrator do to complete this task?

- A. Use Flits to map a network drive letter.
- B. Add the VM to the whitelist to allow it to access the block device.
- C. Use Volumes to add the device as a drive letter.
- D. Add the array to the whitelist to access the storage container directly.

**Answer: C**

**NEW QUESTION 2**

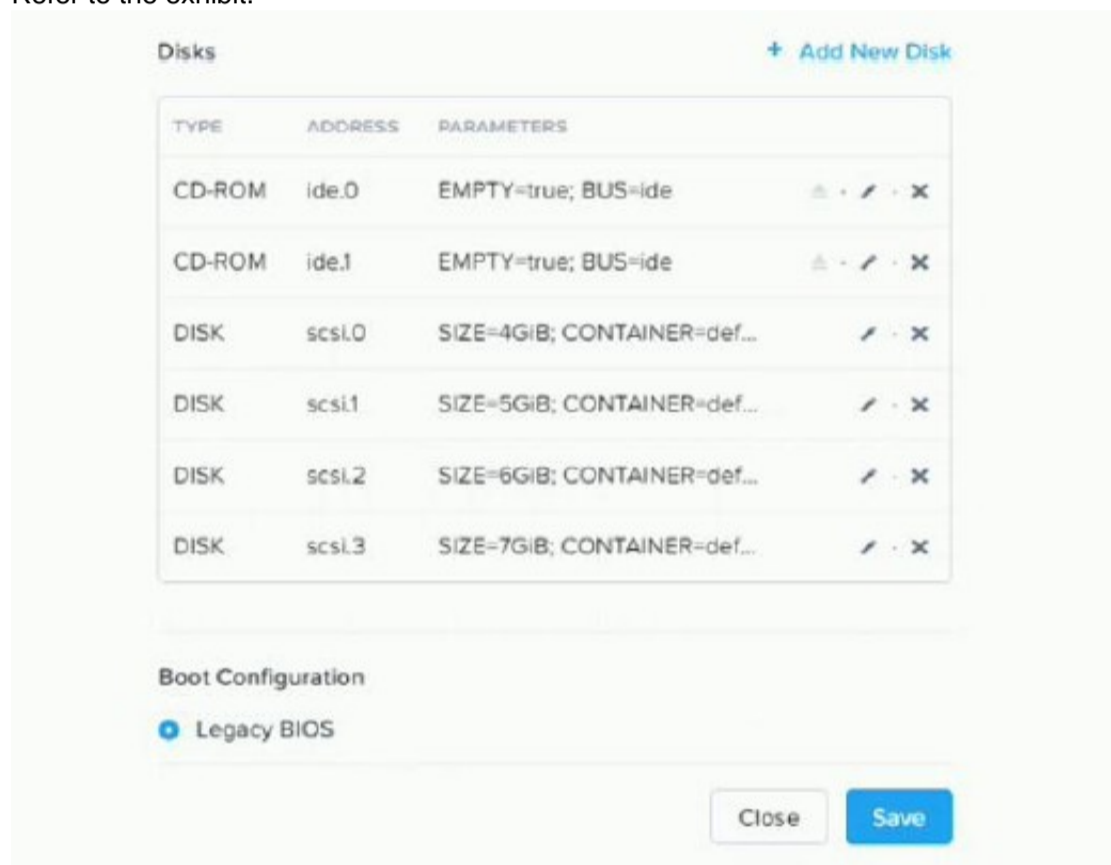
A new Project is being rolled out to an AHV cluster being monitored by Prism Central. The applications team indicates that the application managed by the project is very memory intensive. The administrator wants to be notified about any memory constraints, should they occur. How would an administrator most effectively achieve this task?

- A. Search for the VM, then in the Details page go to metrics and select CPU Usage.
- B. Create a new Metric chart for the duster, and analyze Hypervisor Memory Usage.
- C. Create a Report to tracking the Memory Usage.
- D. Create a new Alert Policy for Memory Usage and set to Critical after 80%.

**Answer: D**

**NEW QUESTION 3**

Refer to the exhibit.



An administrator has created a new Windows VM and given it to the user. The user states that only the C drive mapping is visible within the Windows OS. What is causing this issue?

- A. The user has not formatted and assigned drive letters to the additional disks.
- B. The additional disks have not been formatted as ExFAT in Prism Central.
- C. The administrator has not run the dd command line community utility.
- D. The additional disks were formatted as NTFS in Prism Central.

**Answer: A**

**NEW QUESTION 4**

An administrator should use which Nutanix component to to create in-guest clustering?

- A. Storage Pools
- B. Volumes
- C. Blocks
- D. Containers

**Answer: B**

**NEW QUESTION 5**

Which option allows administrators to specify groups of VMs and assign them to a destination for Disaster Recovery using Leap?

- A. Security Policies
- B. Protection Policies
- C. Recovery Plans
- D. Availability Zones

**Answer:** D

**NEW QUESTION 6**

What is required to successfully live migrate a VM Between two AHV clusters?

- A. Stretch L2 networks across the primary and recovery sites
- B. Configure a Protection domain with synchronous replication
- C. Install and Configure the witness VM on a third Site.
- D. Both clusters must be managed by the same prism central

**Answer:** B

**NEW QUESTION 7**

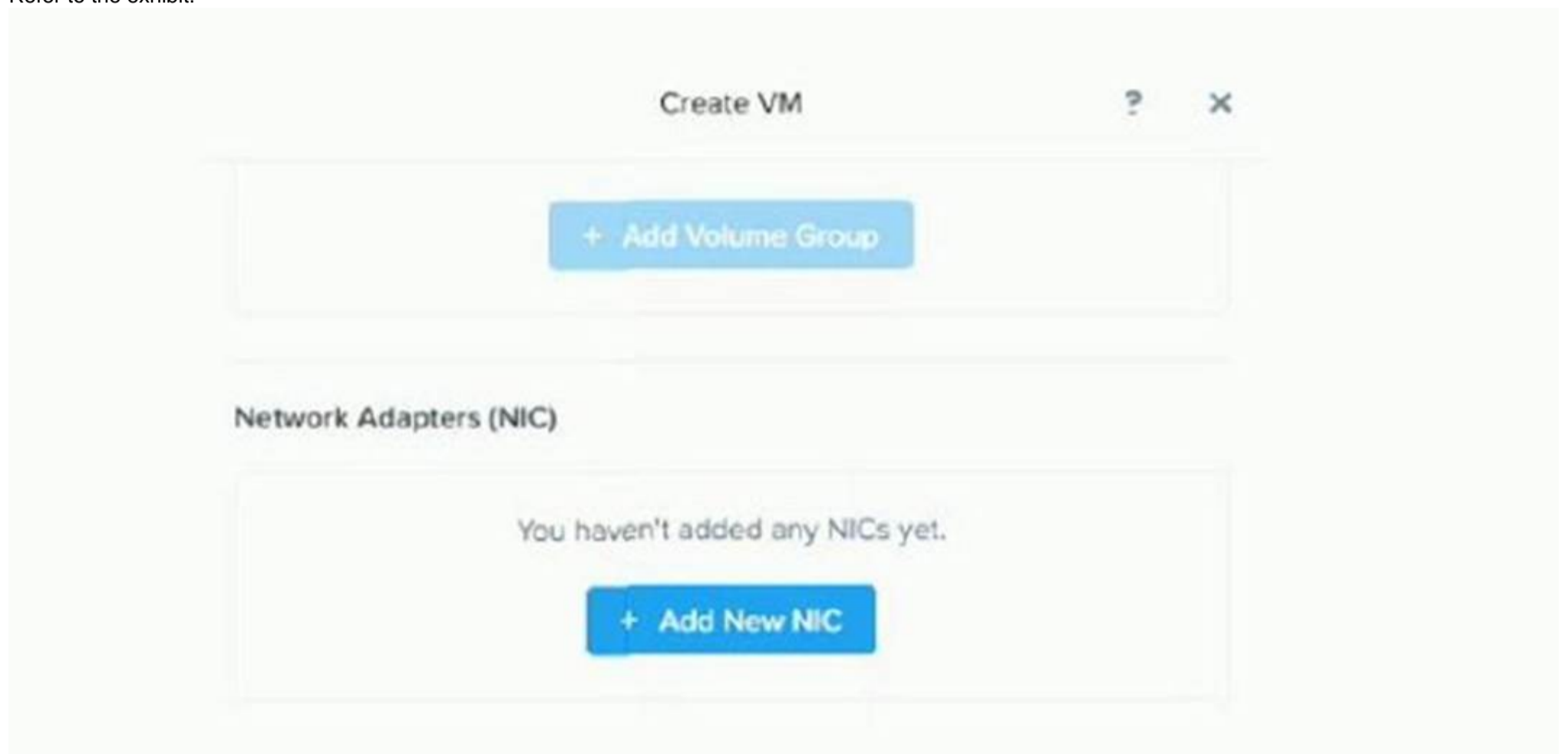
An administrator has moved several workloads from a legacy vSphere virtual infrastructure to a modern Nutanix AHV cluster. After performing this action the administrator realizes they are missing vCenter inventories that would be used to classify the VMs by specific prefixes. What is the fastest way in Prism Central to group VMs with the specified criteria?

- A. Fitters
- B. Categories
- C. Projects
- D. Analysis

**Answer:** B

**NEW QUESTION 8**

Refer to the exhibit.



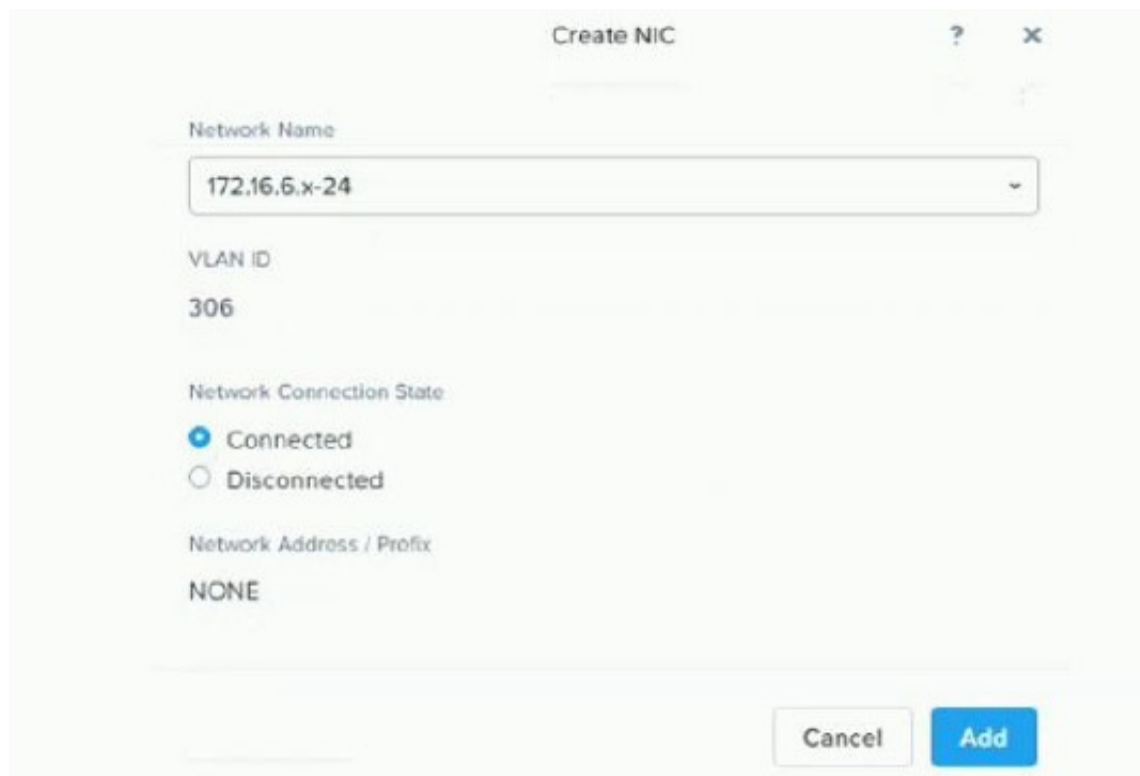
During VM creation, an administrator clicked on Add New NIC, but there is nothing in the Network Name dropdown list. What is causing this issue?

- A. No physical NICs have been allocated for user VMs
- B. The nodes nave no NiCs attached to them
- C. Only 1G NIC is attached to the Nutanix nodes
- D. A network was not created during Network Configuration

**Answer:** D

**NEW QUESTION 9**

Refer to the exhibit.



An administrator has five VMs running on AHV. After creating a new VM and attaching a NIC to the Network Name as shown in the exhibit, the new VM is not able to ping its gateway. The other five VMs are able to successfully communicate with the gateway using the same Network Name. Which statement would explain why the new VM would not be able to ping its gateway?

- A. Each VM needs its own Network Name
- B. The IP address on the new VM is in the wrong subnet
- C. The Network Name is assigned the wrong VLAN ID
- D. You can only have five VMs per Network Name

**Answer: C**

**NEW QUESTION 10**

Which Task is Required to initiate a live migration of VMs between two cluster?

- A. Replicate VM Recovery Point
- B. Promote Metro Availability Protection Domain
- C. Press Migrate Button on the Protection Domain
- D. Perform a Leap Planned Failover

**Answer: C**

**NEW QUESTION 10**

An administrator needs to upgrade AOS for a dark site cluster by using Prism. What step needs to be completed prior to performing the upgrade?

- A. Extract the AOS binaries to the CVM
- B. Manually upload binaries to a local http server.
- C. Manually upload AOS binaries and metadata
- D. Use The LCM dark site option providing AOS binaries

**Answer: C**

**NEW QUESTION 13**

Refer to the exhibit.



An administrator reviews the error in the exhibit then examines the state of the cluster. The administrator finds that the AHV host is up and functional, but the cluster capacity is low.

What will happen to the VMs on the host with this Controller VM?

- A. They will reboot onto other nodes in the cluster.
- B. They will shut down and be orphaned on the host.
- C. They will remain on the current host.
- D. They will be shut down unless protected by a Protection Policy.

**Answer: A**

**NEW QUESTION 18**

An administrator has received the following critical alert:  
 Node 192.168.148.172 is marked to be detached from metadata

The administrator has opened a case with Nutanix and the support engineer has requested more information about the error. Which two actions should the administrator take in the Health Check dashboard to collect the requested information? (Choose two.)

- A. Create an Entity chart
- B. Open a remote support tunnel.
- C. Run the Log Collector
- D. Run the Nutanix Cluster Check

**Answer:** CD

#### **NEW QUESTION 20**

An application owner had reported that an AHV-based critical application VM is performing very slowly. After initial diagnostics, it has been observed that the CPU utilization is significantly higher than normal.

What two actions should the administrator take on this VM without shutting it down? (Choose two.)

- A. Increase number of vCPU in Prism Element
- B. Configure additional cores in acli
- C. Ensure CPU hot-add is supported by the Guest
- D. Use PrismElement to increase the number of cores

**Answer:** AC

#### **NEW QUESTION 22**

An administrator is concerned that a VM on a hybrid cluster with 8GB RAM and 4 vCPUs is performing poorly. An analysis of the VM indicates that CPU utilization is at 50%. Memory utilization is at 30%. and disk latency is at 18ms.

What can the administrator do to improve performance?

- A. Add2xvCPU
- B. Add 4GB RAM
- C. Increase vDisksize
- D. Enable Flash Mode

**Answer:** D

#### **NEW QUESTION 27**

An administrator wants to ensure that a particular VM starts before any other VM in the environment after performing maintenance. How can the administrator achieve this?

- A. Marie the VM as a High Priority VM in Prism Central
- B. Mark the VM for Host Affinity in Prism Element
- C. Mark the VM as an Agent VM in Prism Element
- D. Mark the VM as a High Priority VM in Prism Element

**Answer:** AC

#### **NEW QUESTION 32**

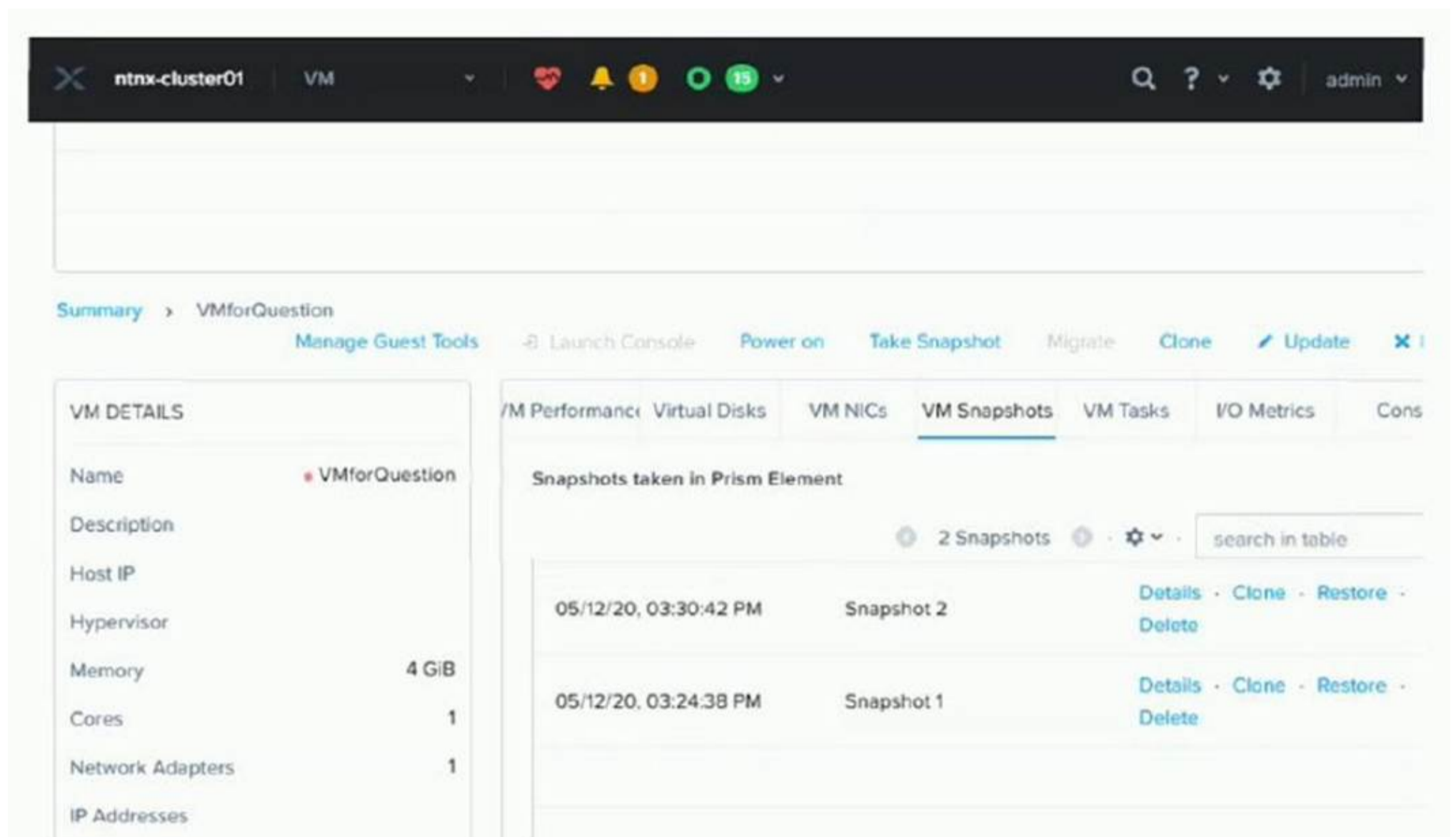
Assuming Sufficient Storage Capacity , how long are entities kept in the prism recycle bin?

- A. 8 hours
- B. 24 hours
- C. 1 week
- D. 1 month

**Answer:** B

#### **NEW QUESTION 35**

Refer to the exhibit.



Management has tasked an administrator to restore the VM, VMforQuestion to a previous point in time (3:20pm), to recover from a corrupted set of files. Which snapshot should the administrator choose, and which action(s) should be executed?

- A. Snapshot 2 Details review restore point
- B. then Clone
- C. Snapshot 2 Restore
- D. Snapshot 1, Restore
- E. Snapshot 1 Details, review restore point
- F. then Clone

**Answer: D**

**NEW QUESTION 36**

An administrator notices that a VM is slow and unresponsive. The administrator wants to compare performance to other VMs on cluster. Which chart type is best suited to display multiple VM performance metrics for diagnosis?

- A. Dashboard Chart
- B. Entity Chart
- C. Analysis Chart
- D. Metric Chart

**Answer: D**

**NEW QUESTION 39**

An administrator is experiencing an issue and needs to enable access for Nutanix support to login. What should the administrator do to meet this requirement?

- A. Enable Remote Support from Prism Element
- B. Enable SSH
- C. Enable Pulse
- D. Enable Remote Support from Prism Central

**Answer: A**

**NEW QUESTION 42**

An administrator needs to replace a node in a three-node cluster. The health status for the environment is good and the cluster is able to support a single node failure. Which step must be performed first?

- A. Remove the failed node from the cluster
- B. Verify hypervisor versions
- C. Plug in all network cables
- D. Expand the cluster with the new node

**Answer: D**

**NEW QUESTION 47**

An administrator expanded the disk capacity on a Windows VM, but the VM operator saw no difference in free space. Which additional step must the administrator take?

- A. Reboot the Virtual Machine
- B. Convert to a dynamic disk
- C. Expand the current partition
- D. Reconnects to iSCSi target

**Answer: C**

**NEW QUESTION 50**

An administrator recently installed Prism Central to use Categories. After having created Categories and Values, the administrator needs to apply these Categories to multiple workloads.

How can the administrator easily perform this task?

- A. Create a Playbook to automate the process
- B. Choose multiple VMs and select Manage Categories
- C. Go to Categories and select the VMs to be added
- D. Manage the VMs ownership

**Answer: B**

**NEW QUESTION 55**

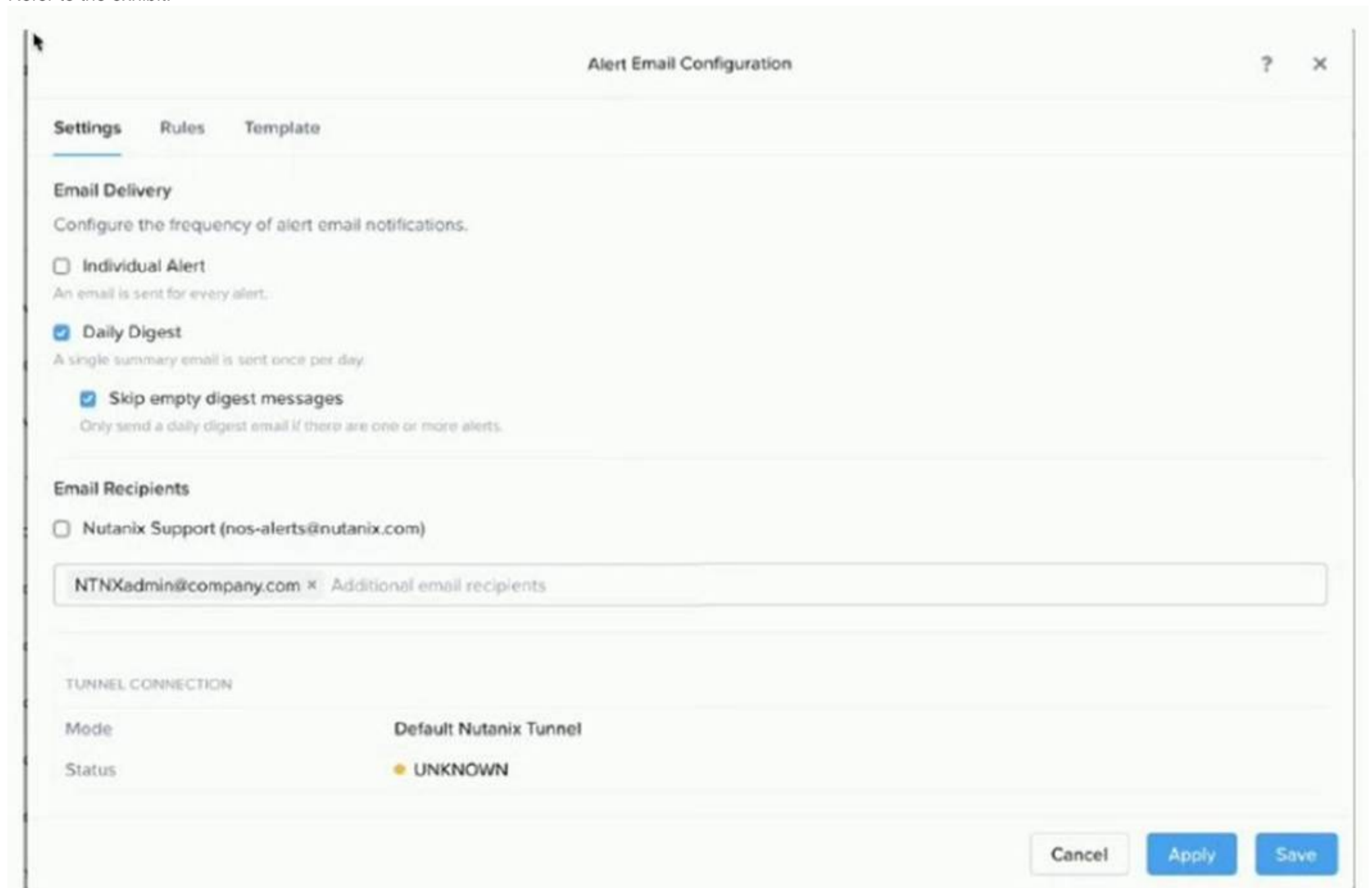
How can an administrator access a Windows VM running on a Nutanix cluster if it is unreachable via ping?

- A. Connect using Xi Frame
- B. Open a Virtual Console through Prism Central
- C. Connect using RDP
- D. Open a Virtual Console through Prism Element

**Answer: D**

**NEW QUESTION 56**

Refer to the exhibit.



An administrator has configured Prism Central to email daily digests of alerts on a cluster. After a week, the administrator notices that digests are not being received.

What is the most likely cause of the issue?

- A. The recipient address is not registered with Nutanix.
- B. Nutanix support is not enabled as a recipient.

- C. The tunnel connection has not been enabled.
- D. The SMTP server is not configured properly.

**Answer: D**

**NEW QUESTION 57**

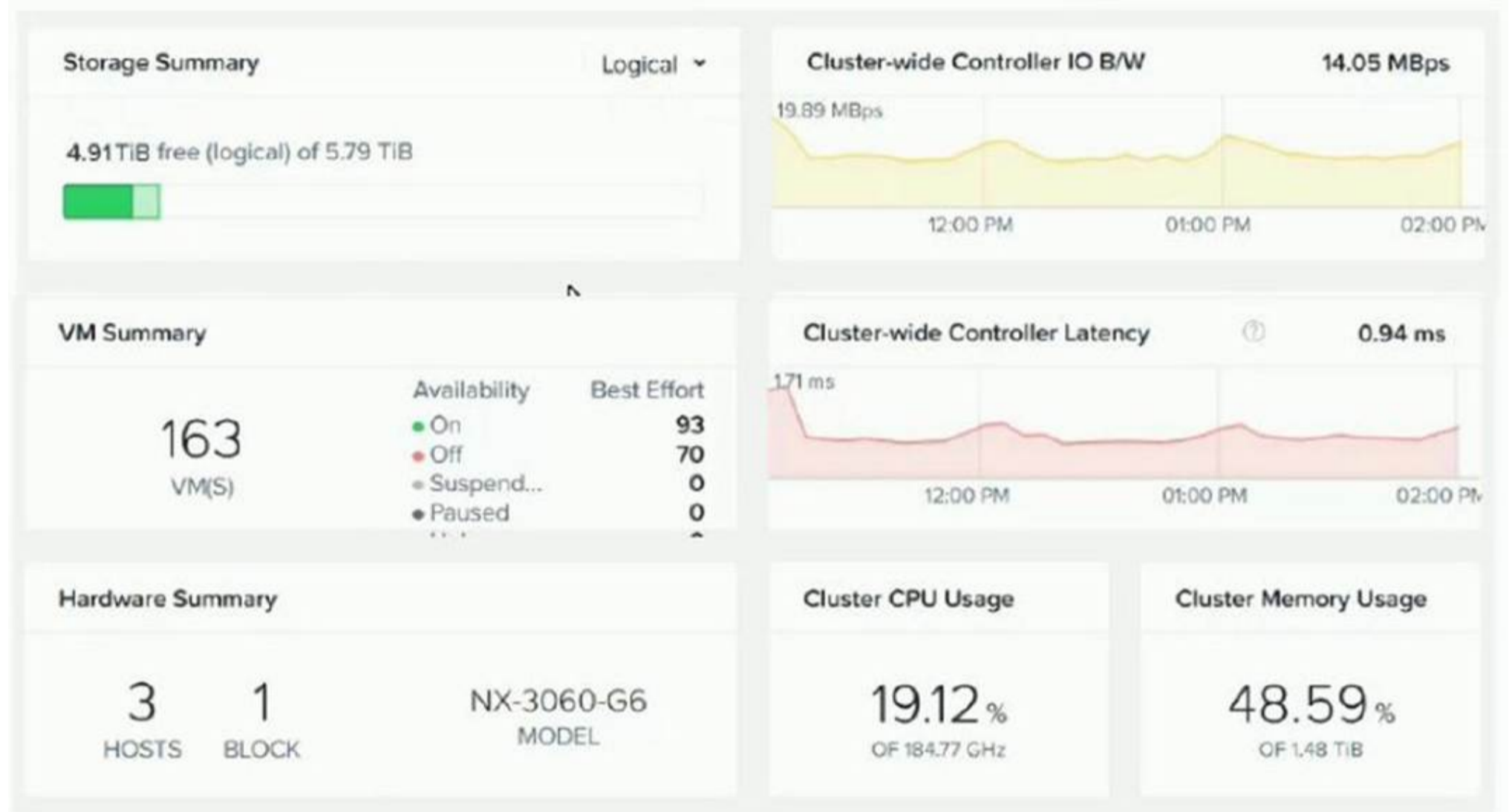
What is required to snapshot a group of VMs at the same point in time?

- A. Volume Group
- B. Categories
- C. Time Stream
- D. Consistency Group

**Answer: D**

**NEW QUESTION 59**

Refer to the exhibit.



An administrator wants to make sure there are enough compute resources within the AHV- based Nutanix cluster during any maintenance operations or a node failure.

What configuration should the administrator change to achieve this task?

- A. Enable Degraded Node Detection
- B. Enable MA Reservation
- C. Reserve 33% CPU and 33% memory
- D. Set virtual machine affinity rules

**Answer: B**

**NEW QUESTION 62**

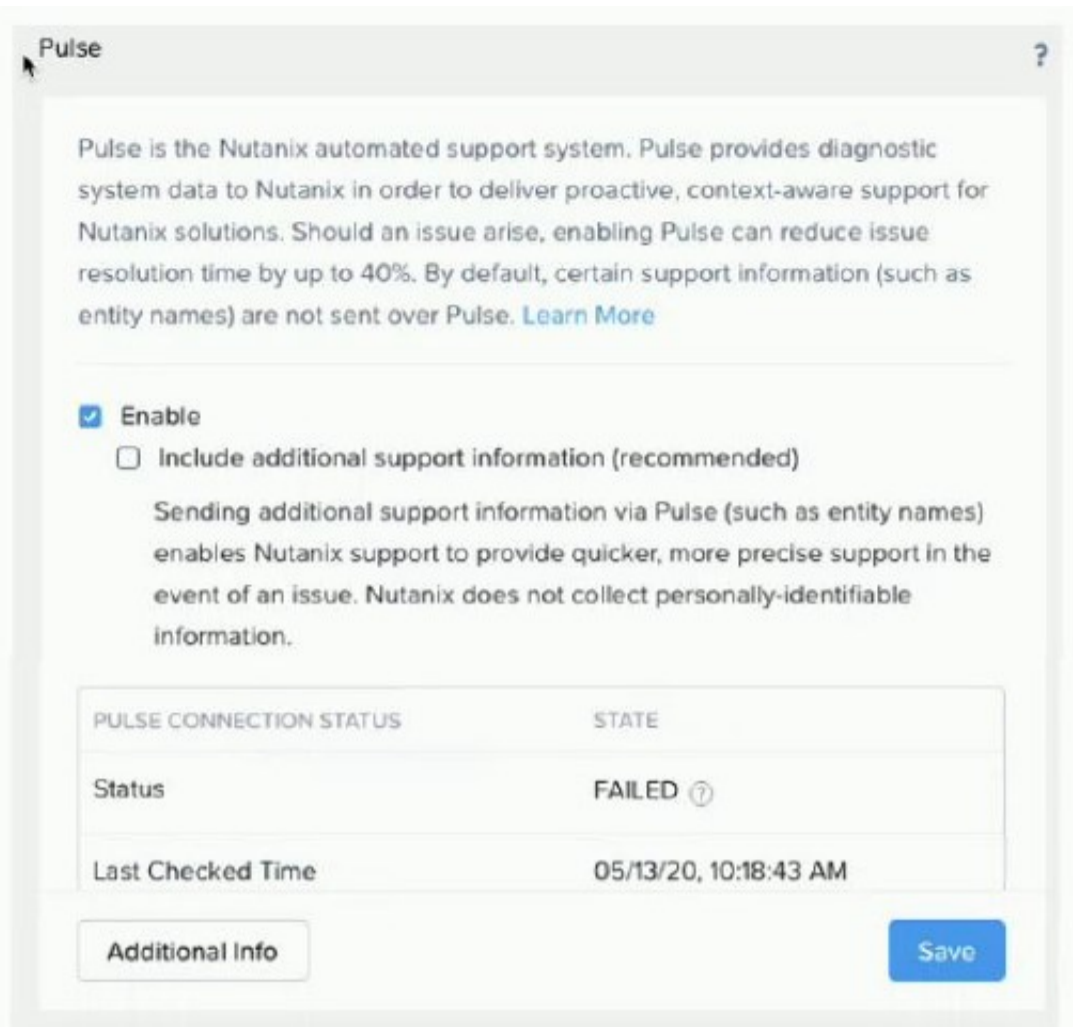
An administrator attempts to reinstall a VM's QuestOS, but is unable to change the legacy BIOS boot priority. Based on the exhibit, what is causing this issue?

- A. GuestOS reinstall is not possible for a VM
- B. The CD-ROM is empty
- C. The VM is currently on
- D. The VM is undergoing a snapshot

**Answer: C**

**NEW QUESTION 65**

Refer to the exhibit.



An administrator has enabled Pulse, but is getting the error shown in the exhibit. What is causing this error message?

- A. Subscription expired
- B. Incorrect licensing
- C. Firewall misconfiguration
- D. Expired SSL certificate

**Answer: C**

**NEW QUESTION 68**

An administrator receives several alerts indicating a Nutanix cluster is running out of memory. As a preemptive measure, the administrator wishes to try to reduce the consumed resources, if possible.

Which two predefined views for Reporting best display potentially reclaimable resources? (Choose two.)

- A. List of Inactive VMs
- B. list of Bully VMs
- C. Memory Runway
- D. List of Overprovisioned VMs

**Answer: BD**

**NEW QUESTION 72**

An administrator has planned a RAM upgrade on a 3-node Nutanix cluster. Which step should be performed first for a non-disruptive memory upgrade?

- A. Stop one CVM at time
- B. RunNCC
- C. Power off one host at time
- D. Live Migrate VMs

**Answer: B**

**NEW QUESTION 74**

After adding a remote site cluster, an administrator must map which two entities? (Choose two.)

- A. Networks
- B. Virtual Machines
- C. Consistency Groups
- D. VStores

**Answer: BC**

**NEW QUESTION 79**

Which two CVM components are used to provide data locality? (Choose two.)

- A. Logical Unit
- B. Unified Cache
- C. Extent Store
- D. Volume Group

**Answer:** BC

**NEW QUESTION 83**

An Administrator needs to provide users access to prism Central Projects. What Source of user accounts must the administrator Use?

- A. Local Users
- B. Open LDAP
- C. Active Directory
- D. SAML2 Provider

**Answer:** C

**NEW QUESTION 85**

A mission critical application with four VMs have been deployed inside of a six-node Nutanix cluster. An alert is generated that a node in the cluster has failed and is no longer online. After the alert, two of the VMs reboot and come back online on another node. Which feature, when configured, would have prevented the two VMs from rebooting?

- A. Host Anti-Affinity
- B. VM High Availability
- C. Host Affinity
- D. Protection Domain

**Answer:** C

**NEW QUESTION 90**

An administrator is looking to store a large amount of unstructured data with capabilities to set up a retention policy. Which Nutanix product meets this requirement?

- A. Nutanix Mint
- B. Nutanix Piles
- C. Nutanix Storage Container
- D. Nutanix Objects

**Answer:** D

**NEW QUESTION 93**

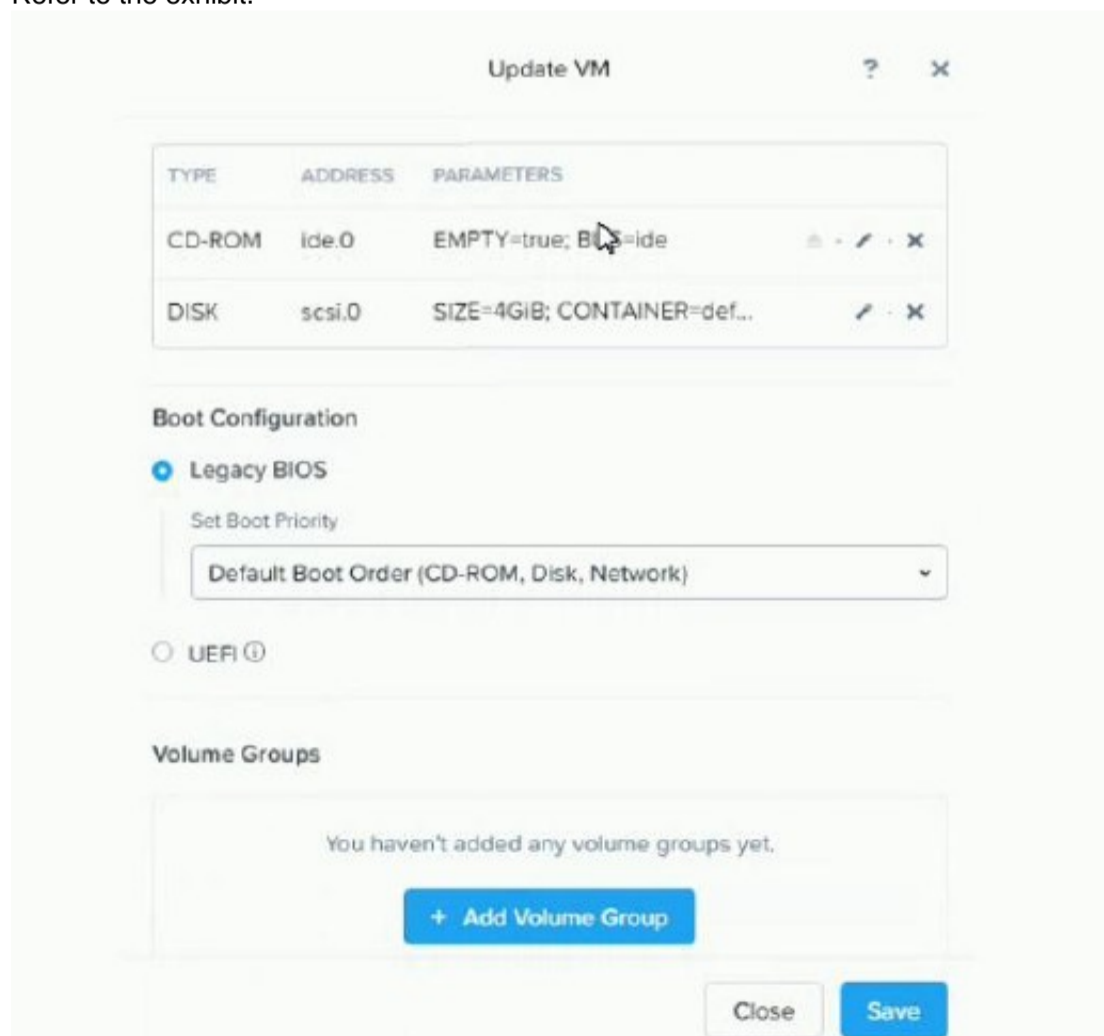
An Administrator Wants a VM to Communicate with two Separate VLANs. What steps should the administrator complete?

- A. Add a single NIC to the VM and Configure it for both VLANs
- B. Add two NICs to the VM and Configure one for each VLAN
- C. Turn on IPAM for autoconfiguration of VLANs
- D. Configure a security Policy to assign VLANs to the VM

**Answer:** B

**NEW QUESTION 98**

Refer to the exhibit.



A team member has built a CentOS VM image for use as a template. An administrator deploys a new VM using the CentOS image as the 05 drive. No other drives

are presented to the VM.

Following the deployment, the administrator attempts to boot the VM, but is unsuccessful. What could be causing this issue?

- A. The VMS Boot Priority must reference disk first before CD-ROW
- B. The VM's Disk (scsi.O) setting must be set to make this disk bootable
- C. No Volume Groups have been created for the VM
- D. The CentOS VM image was built with UEF:

**Answer: D**

#### **NEW QUESTION 101**

An administrator needs to have a view of current workloads sorted by vCPU count. What should the administrator do to achieve this task?

- A. Create a New Dashboard adding the VMs widget
- B. Use the Group function in prism Central
- C. Create a new Analysis in Prism Element
- D. Export the VM list in CSV and use an external tool

**Answer: A**

#### **NEW QUESTION 105**

An administrator needs to expand a Nutanix cluster that is tagging the network traffic at the CVM and AHV level. However, the administrator doesn't remember the configured VLAN ID.

Which command can the administrator run to find the correct VLAN ID from the CVM?

- A. ifconfig
- B. manage-ovs
- C. acli
- D. ovs-vsctl

**Answer: D**

#### **NEW QUESTION 107**

Which Windows technology does AHV support to prevent authentication theft?

- A. Endpoint Manager
- B. Azure AD Multi-Factor
- C. Windows Defender Credential Guard
- D. Active Directory federation Services

**Answer: D**

#### **NEW QUESTION 108**

What is the minimum number of blocks required to utilize block awareness?

- A. 2
- B. 3
- C. 4
- D. 5

**Answer: B**

#### **NEW QUESTION 109**

A customer requires the ability to block all network traffic between their VDI VMs and their application VMs running on their Nutanix AHV clusters.

What Nutanix product would meet this requirement?

- A. Beam
- B. Calm
- C. Era
- D. Flow

**Answer: D**

#### **NEW QUESTION 110**

An administrator needs to provide data integrity at the application level for a VM that is replicated to a secondary site. Which requirement will satisfy this task?

- A. 1 VM per Consistency Group
- B. 1 VM per Availability Zone
- C. 1 VM per Protection Domain
- D. 1 VM per Schedule

**Answer: D**

#### **NEW QUESTION 115**

Which two advanced features requires you to install Nutanix Guest Tools (NGT)? (Choose two.)

- A. Disaster Recovery of a VM between AHV and ESXi Hypervisors
- B. Live Migration of a VM between AHV & other Hypervisors
- C. File recovery from a third-party backup
- D. Self-service file-level recovery from VM snapshots

**Answer:** AD

**NEW QUESTION 117**

Protection Domains enable administrators to replicate which two items for Disaster Recovery? (Choose two-)

- A. Volume Groups
- B. Virtual Machines
- C. File Shares
- D. Disk Images

**Answer:** AB

**NEW QUESTION 121**

.....

## **Thank You for Trying Our Product**

### **We offer two products:**

1st - We have Practice Tests Software with Actual Exam Questions

2nd - Questions and Answers in PDF Format

### **NCA-5.20 Practice Exam Features:**

- \* NCA-5.20 Questions and Answers Updated Frequently
- \* NCA-5.20 Practice Questions Verified by Expert Senior Certified Staff
- \* NCA-5.20 Most Realistic Questions that Guarantee you a Pass on Your FirstTry
- \* NCA-5.20 Practice Test Questions in Multiple Choice Formats and Updatesfor 1 Year

**100% Actual & Verified — Instant Download, Please Click**  
**[Order The NCA-5.20 Practice Test Here](#)**