

## Exam Questions 300-615

Troubleshooting Cisco Data Center Infrastructure (DCIT)

<https://www.2passeasy.com/dumps/300-615/>



#### NEW QUESTION 1

A mission-critical server is connected to site A. Connectivity to this server is lost from site B because the MAC route is missing in the OTV VDC of the Nexus 7000 in site B due to MAC aging. Which action allows the flooding of the unknown unicast MAC on the Nexus 7000 in the OTV VDC?

- A. Use route-map to advertise this MAC statically and redistribute with ISIS.
- B. Unknown unicast flooding is not allowed.
- C. Use the otv flood mac <> command to selectively flood traffic for a given MAC.
- D. Use the otv isis bfd <> command to configure BFD protocol.

**Answer: B**

#### NEW QUESTION 2

Refer to the exhibit. After a failover occurs, which two actions must be performed on Switch-B to manually preempt the operational primary role back to Switch-A? (Choose two.) A. Configure the local vPC role priority to have a lower value than Switch-A.

- A. Configure the local vPC role priority to have a higher value than Switch-A.
- B. Disable and then re-enable the vPC peer-keepalive link.
- C. Configure the local vPC role priority to have the same value as Switch-A.
- D. Disable and then re-enable the vPC peer link.

**Answer: BE**

#### NEW QUESTION 3

```
Debug messages from Router-A
OSPF: Rcv DBD from 10.100.1.2 on GigabitEthernet0/1 seq 0x2124 opt 0x52 flag 0x2
      len 1452 mtu 2000 state EXSTART
OSPF: Nbr 10.100.1.2 has larger interface MTU
SPF: Send DBD to 10.100.1.2 on GigabitEthernet0/1 seq 0x9E6 opt 0x52 flag 0x7
      len 32
OSPF: Retransmitting DBD to 10.100.1.2 on GigabitEthernet0/1 [10]
OSPF: Send DBD to 10.100.1.2 on GigabitEthernet0/1 seq 0x9E6 opt 0x52 flag 0x7
      len 32
OSPF Retransmitting DBD to 10.100.1.2 on GigabitEthernet0/1[11]
%OSPF-5-ADJCHG: Process 1, Nbr 10.100.1.2 on GigabitEthernet0/1 from EXSTART to
      DOWN, Neighbor Down: Too many retransmissions

Debug messages from Router-B
OSPF: Rev DBD from 10.100.100.1 on GigabitEthernet0/1 seq 0x89E opt 0x52 flag 0x7
      len 32 mtu 1600 state EXCHANGE
OSPF: Nbr 10.100.100.1 has smaller interface MTU
```

Refer to the exhibit. An OSPF adjacency between Router-A and Router-B cannot reach the FULL state. Which action resolves the issue?

- A. Adjust the MTU on Router-A to 1600.
- B. Disable the check of the MTU value.
- C. Set the OSPF media type to point-to-point.
- D. Adjust the MTU on Router-B to 1604.

**Answer: B**

#### NEW QUESTION 4

Refer to the exhibit. The HSRP configuration in the exhibit fails to function. Which action resolves this issue?

- A. Enable IP redirects.
- B. Set the MTU to 1500 bytes.
- C. Configure HSRP version 2.
- D. Configure the same HSRP group on both devices.

**Answer: A**

#### NEW QUESTION 5

Refer to the exhibit. A network engineer has connected the Nexus switch management port to the Internet using DHCP to allow the Guest shell running on the switch to download Python packages. The engineer can ping google.com successfully from the Nexus switch, but the Guest shell failed to download any Python packages. Which action resolves the problem?

- A. Update the Python packages on the Cisco Nexus switch directly.
- B. Manually configure DNS in the Guest shell, even if it is claimed on the Cisco Nexus switch through DHCP.
- C. Manually configure NTP in the Guest shell.
- D. Connect Guest shell to data plane interfaces to be able to connect to the networks outside the Cisco Nexus switch.

**Answer: B**

#### NEW QUESTION 6

An engineer removes a VMM domain from an endpoint group called EPG-1, but the distributed port group fails to be deleted. Which action must be taken to resolve the issue?

- A. Remove the port group manually.
- B. Migrate all virtual machines in the EPG-1 to different hypervisors.
- C. Remove the remaining EPGs from the VMM domain.
- D. Migrate all virtual machines in the EPG-1 to different port groups.

**Answer: C**

#### NEW QUESTION 7

An engineer is troubleshooting a packet flow from an access leaf to spine. Which EVPN routes are expected on this connection?

- A. EVPN Type 1-5
- B. EVPN Type 0,9,15
- C. EVPN Type 9-15
- D. EVPN Type 0,16

**Answer: A**

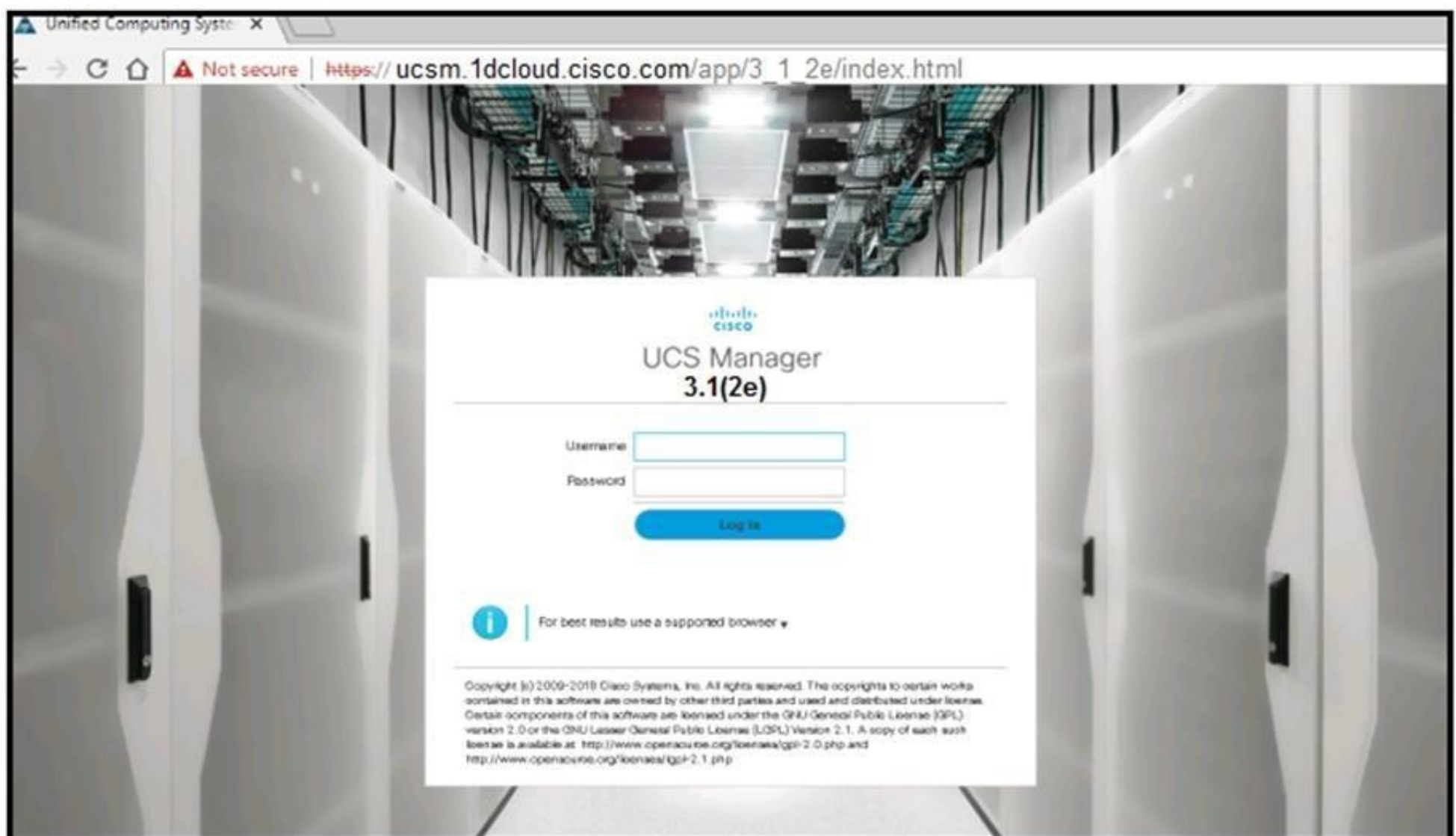
#### NEW QUESTION 8

Refer to the exhibit. A switch is being downgraded to an earlier release because of a problem with the current release. After the switch is downgraded, it can no longer forward traffic. Which action resolves the issue?

- A. Enable ISSD after the downgrade is complete.
- B. Roll back to the original image.
- C. Reload the switch.
- D. Shut and no shut the interfaces to the FEX.

**Answer: B**

#### NEW QUESTION 9



Refer to the exhibit. A web browser displays a “not secure” warning message when accessing the web interface of Cisco UCS Manager. Which action resolves the issue?

- A. Load third-party certificate to UCS Manager.
- B. Use the correct TCP port for HTTPS.
- C. Use a supported web browser.
- D. Use a supported version of UCS Manager.

**Answer: A**

#### NEW QUESTION 10

An attempt to use a global vNIC redundancy template pair results in a service profile that fails to apply. Which action resolves the issues?



- A. Create the peer names before creating the templates.
- B. Assign the secondary template first, and then set the peer name.
- C. Assign both templates simultaneously.
- D. Assign the primary template first, and then set the peer name.

**Answer: D**

#### NEW QUESTION 10

An engineer must replace a failed memory on a Cisco UCS B-Series Blade Server. After the replacement was done, the server has a “resolve slot” warning. Which server maintenance action resolves the issue?

- A. Perform diagnostic interrupt on the server.
- B. Re-acknowledgement the server.
- C. Reset the server.
- D. Decommission the server.

**Answer: B**

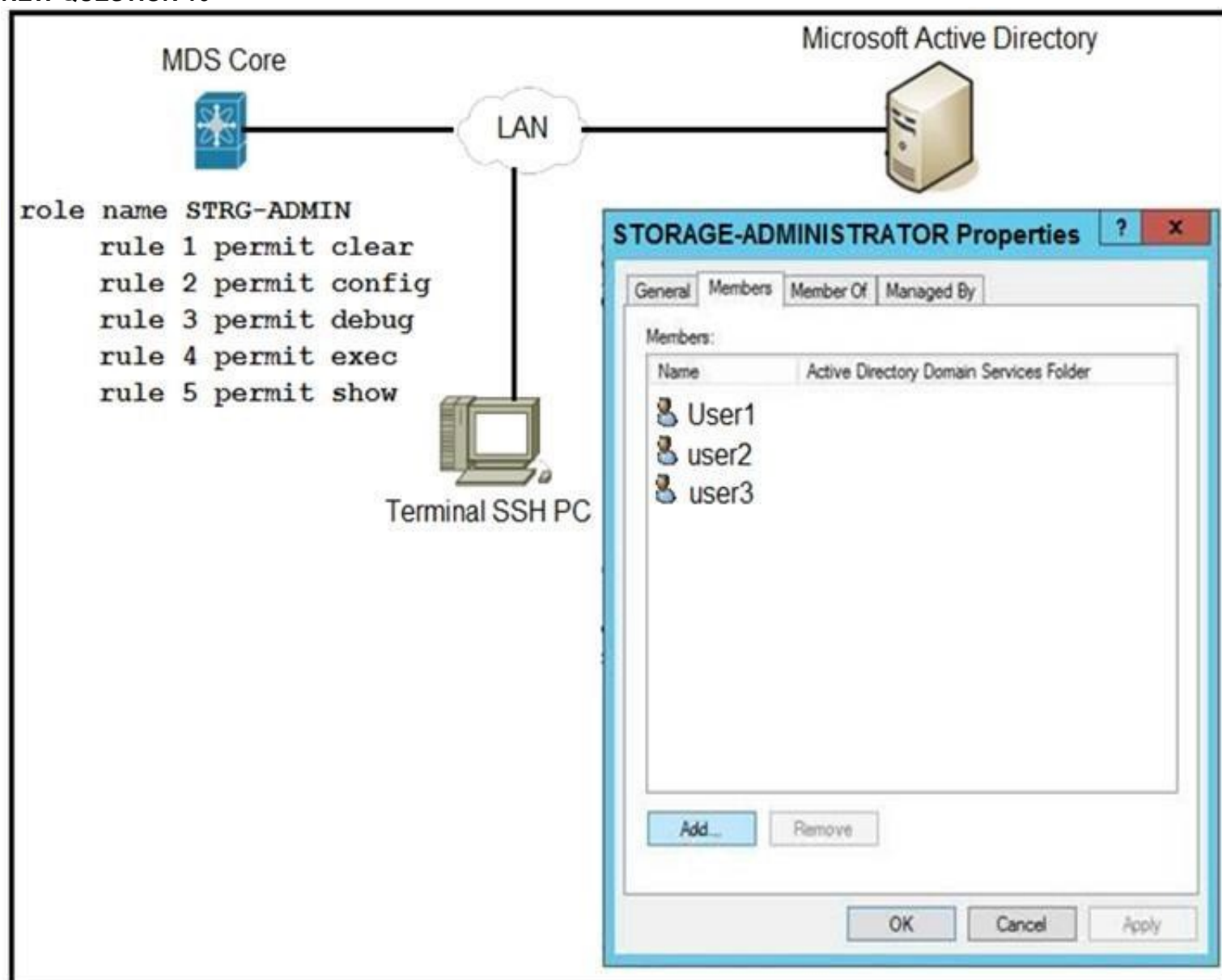
#### NEW QUESTION 14

Cisco Unified Computing System Manager raises a critical error message that indicates that the system has overlapping Ethernet and FCoE VLANs. All of the Ethernet traffic on the overlapping VLANs drops. Which action resolves the issue?

- A. Modify the VLAN assignment to vNICs.
- B. Change the PIN groups on the vHBAs.
- C. Modify the FCoE VLAN.
- D. Set the FCoE VLAN as the native VLAN on server uplinks.

**Answer: A**

#### NEW QUESTION 16



Refer to the exhibit. An engineer is troubleshooting why user1, user2, and user3 from group STORAGE-ADMINISTRATOR in Microsoft Active Directory cannot log in to the Cisco MDS SSH CLI. Which action resolves the issue?

- A. Configure the role name to match the group name on Microsoft Active Directory.
- B. Include specific users into MDS role configuration.
- C. Configure SSH logins on Cisco MDS switch.
- D. Integrate Cisco MDS with Microsoft Active Directory.

**Answer: A**

#### NEW QUESTION 17

A server fails to boot from the operating system after a RAID1 cluster migration. The RAID remains in an inactive state during and after a service profile association. Which action resolves the issue?

- A. Configure the SAN boot target in the service profile.
- B. Configure the SAN boot target to any configuration mode.
- C. Use a predefined local disk configuration policy.
- D. Remove the local disk configuration policy.

**Answer:** C

#### NEW QUESTION 20

An engineer is troubleshooting a failed DCBX exchange between a server and a Cisco Nexus switch. Which action allows DCBX to successfully negotiate?

- A. Enable ETS
- B. Enable PFC.
- C. Enable Cisco Discovery Protocol.
- D. Enable LLDP.

**Answer:** D

#### NEW QUESTION 25

```
FC0001# show zone active
zone name hba1_VN0001 vsan 3201
  fcid 0x970209 [pwwn 50:ab:0b:00:00:c2:8f:de]
* fcid 0x970102 [pwwn 20:ba:00:a0:98:3b:6f:d8]

zone name hba1_VN0002 vsan 3201
* fcid 0x970200 [pwwn 50:ab:0b:00:00:c2:8a:67]
  fcid 0x9700c2 [pwwn 20:ba:00:a0:98:3b:61:99]
```

Refer to the exhibit. The initiator that has FC ID 0x970102 fails to communicate with the target that has FC ID 0x970200. What action resolves the issue?

- A. Reconfigure the initiator and the target to be in the same zones.
- B. Reactivate the zoneset.
- C. Reset the port for FC ID 0x970102 and FC ID 0x970200 to log in to the fabric.
- D. Reset the port for FC ID 0x970209 and FC ID 0x9700c2 to log in to the fabric.

**Answer:** B

#### NEW QUESTION 27

A Fibre Channel interface on a Cisco Nexus 5000 Series Switch receives bit errors, and the switch disables the interface. A temporary workaround must be implemented before the root cause is identified. Which action does an engineer take to prevent this issue from reoccurring?

- A. Verify that the SFPs are supported.
- B. Change the SFP to operate at 4 Gbps instead of 2 Gbps.
- C. Run the shutdown and then no shutdown command on the interface.
- D. Run the switchport ignore bit-errors command on the interface.

**Answer:** D

#### NEW QUESTION 29

```
event manager applet config_monitor
event cli match "conf t"
action 1.0 snmp-trap strdata "User has entered into configuration mode"
```

Refer to the exhibit. The EEM script fails to send an SNMP trap when a user attempts to enter configuration mode. Which configuration is missing from the script?

- A. event statement
- B. event-default action statement
- C. policy-default action statement
- D. IP address of the SNMP server

**Answer:** D

#### NEW QUESTION 32

Refer to the exhibit. A network engineer configures an EEM script to get a syslog notification after a configuration change. This message appears when the engineer must make a new configuration to this switch. Which configuration did the engineer neglect to apply in the script for it to function properly?

- A. event cli match 'configure terminal'
- B. event policy-default count 1 time 100
- C. event syslog occurs 10
- D. action 2.0 event-default

**Answer:** D

#### NEW QUESTION 34

```
event manager applet loopback_online override -BootupPortLoopback
  action 1 syslog priority notifications msg "Switch Online"
  action 2 policy-default
```

Refer to the exhibit. The EEM script overrides all events in the system policy. What should be added to the script to resolve the issue?

- A. event statement
- B. environment variable
- C. event-default action statement
- D. configure terminal action

**Answer:** A

#### NEW QUESTION 37

##### DRAG DROP

Drag and drop the commands from the left onto the correct categories on the right.

Select and Place:

- A. Mastered
- B. Not Mastered

**Answer:** A

#### NEW QUESTION 40

```
switch# guestshell resize cpu 4
Note: System CPU share will be resized on Guest shell enable
```

Refer to the exhibit. After the configuration is performed, guestshell continues to use 2%CPU. Which action resolves the issue?

- A. Resync the database
- B. Recreate the guestshell
- C. Reboot the guestshell
- D. Reboot the switch

**Answer:** C

#### NEW QUESTION 42

After upgrading a client's fabric interconnect to the latest version, an engineer discovers that the appliance has lost its entire configuration. Which two locations should an engineer check to confirm that the appliance had backed up the configuration prior to the upgrade in order to retrieve the lost configuration? (Choose two.)

- A. Equipment FSM page, InternalBackup stage
- B. Service profiles page, InternalBackup stage
- C. Admin page, PollInternalBackup stage
- D. Equipment FSM page, PollInternalBackup stage
- E. Admin page, InternalBackup stage.

**Answer:** AC

#### NEW QUESTION 43

.....

## THANKS FOR TRYING THE DEMO OF OUR PRODUCT

Visit Our Site to Purchase the Full Set of Actual 300-615 Exam Questions With Answers.

We Also Provide Practice Exam Software That Simulates Real Exam Environment And Has Many Self-Assessment Features. Order the 300-615 Product From:

<https://www.2passeasy.com/dumps/300-615/>

## Money Back Guarantee

### 300-615 Practice Exam Features:

- \* 300-615 Questions and Answers Updated Frequently
- \* 300-615 Practice Questions Verified by Expert Senior Certified Staff
- \* 300-615 Most Realistic Questions that Guarantee you a Pass on Your FirstTry
- \* 300-615 Practice Test Questions in Multiple Choice Formats and Updatesfor 1 Year