

## Exam Questions HPE0-S60

Delta - HPE Compute Solutions

<https://www.2passeasy.com/dumps/HPE0-S60/>



#### NEW QUESTION 1

You plan to configure a Link Aggregation Group (LAG) for two connections within a server profile for a compute node running an ESXI system. What is required from the VMware side to enable LAG?

- A. Virtual Distributed Switch
- B. vSphere Standard license
- C. Load balancing cluster
- D. Dedicated VMKernel port

**Answer:** D

#### NEW QUESTION 2

A logical interconnect group can span on multiple HPE Synergy frames for which interconnect type?

- A. Brocade 32GB Fibre Channel Switch Module for HPE Synergy
- B. HPE virtual Connect SE 32 Gb FC Module for Synergy
- C. HPE Virtual Connect SE 100 Gb F32 Module for Synergy
- D. HPE Synergy 12 Gb SAS Connection Module

**Answer:** C

#### NEW QUESTION 3

Your customer plans to setup an HPE Synergy solution based on SY480 Gen10 compute nodes with the following connectivity options - SAS connectivity installed in the first fabric - FC connectivity Installed In the second fabric - Ethernet connectivity installed in the third fabric. Which statement regarding this setup is true?

- A. Each compute node must have at least 768GB of memory installed
- B. Interconnect modules that provide SAS connectivity should be moved to the third fabric
- C. Each interconnect module in each fabric must be properly licensed in HPE OneView
- D. Compute nodes must have a second CPU installed to access the second fabric.

**Answer:** A

#### NEW QUESTION 4

What is a restriction of using a RoCE network?

- A. It is by default configured as an untagged network and cannot be a part of a network set.
- B. It does not support Private VLAN and Multicast VLAN.
- C. it is not supported with HPE Virtual Connect SE 40 GD F8 Module for HPE Synergy.
- D. It does not support smart link and private network features.

**Answer:** A

#### NEW QUESTION 5

Your customer needs to move an application from an HPE Synergy 480 Gen10 Compute Module to an HPE Synergy 660 Gen 10 Compute Module. The 480 has a switch that has been manually zoned outside of HPE OneView. What must the customer do before migrating the application?

- A. Migrate the application to a Logical JBOD and connect it to the new server
- B. Copy the server profile and assign the clone to the new hardware
- C. Edit the server profile and change server hardware type
- D. Create a new server profile template and apply to the new hardware

**Answer:** C

#### NEW QUESTION 6

In the past a customer experienced a networking issue where network ports went down and came back up in quick succession. Which HPE Virtual Connect SE 100 GD F32 Module for HPE Synergy feature can be configured to disable such ports?

- A. Pause flood protection
- B. sFlow
- C. Storm control
- D. Port flap protection

**Answer:** B

#### NEW QUESTION 7

Your customer plans to add four HPE Synergy frames to an existing management ring. All installed frames are equipped with two 2-port FLM modules, while new frames will be equipped with 4-port FLM modules. Which statement about mixing different FLM modules is true?

- A. Existing 2-port FLM modules must be replaced with 4-port FLM modules
- B. A management ring can contain mixed frame link module configurations
- C. A management ring with mixed FLM modules cannot have more than 12 frames
- D. Mixing different FLM modules is allowed if all of them have the same firmware version

Answer: C

### NEW QUESTION 8

You need to setup HPE Synergy frames after hardware components are discovered within HPE OneView. Put the steps to achieve this goal into the coned order in the answer area on the right.

Steps

Answer Area

Create a logical enclosure.
Create a logical interconnect group with uplink sets.
Create an enclosure group.
Create server profile templates and server profiles.
Define all required networks.

- A. Mastered
- B. Not Mastered

Answer: A

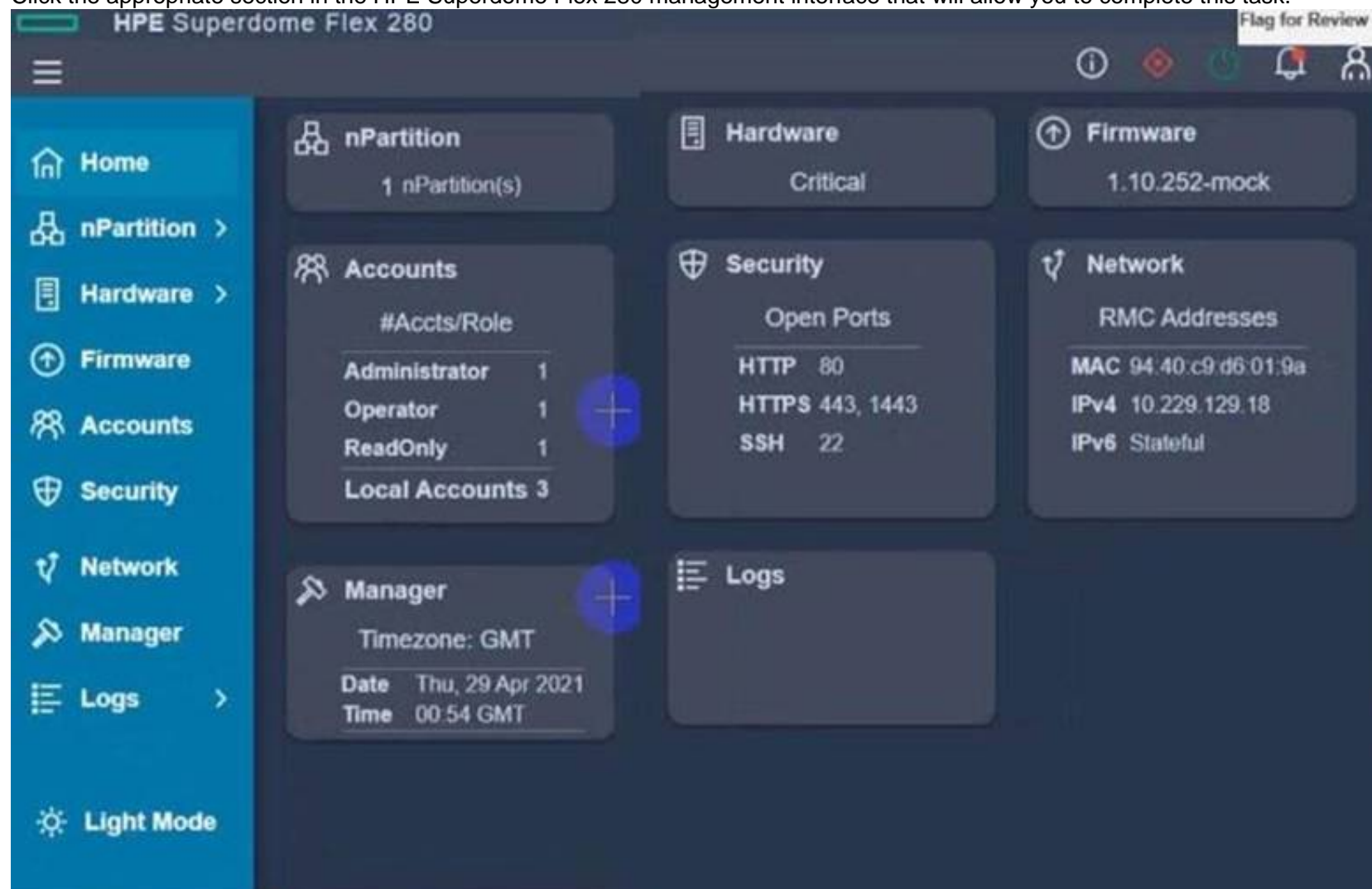
Explanation:

Steps	Answer Area
Create a logical enclosure.	Create a logical interconnect group with uplink sets.
Create a logical interconnect group with uplink sets.	Create a logical enclosure.
Create an enclosure group.	Create an enclosure group.
Create server profile templates and server profiles.	Create server profile templates and server profiles.
Define all required networks.	Define all required networks.

### NEW QUESTION 9

After deploying HPE Superdome Flex 280 you need to check Core Analysis Engine (CAE) Log.

Click the appropriate section in the HPE Superdome Flex 280 management interface that will allow you to complete this task.

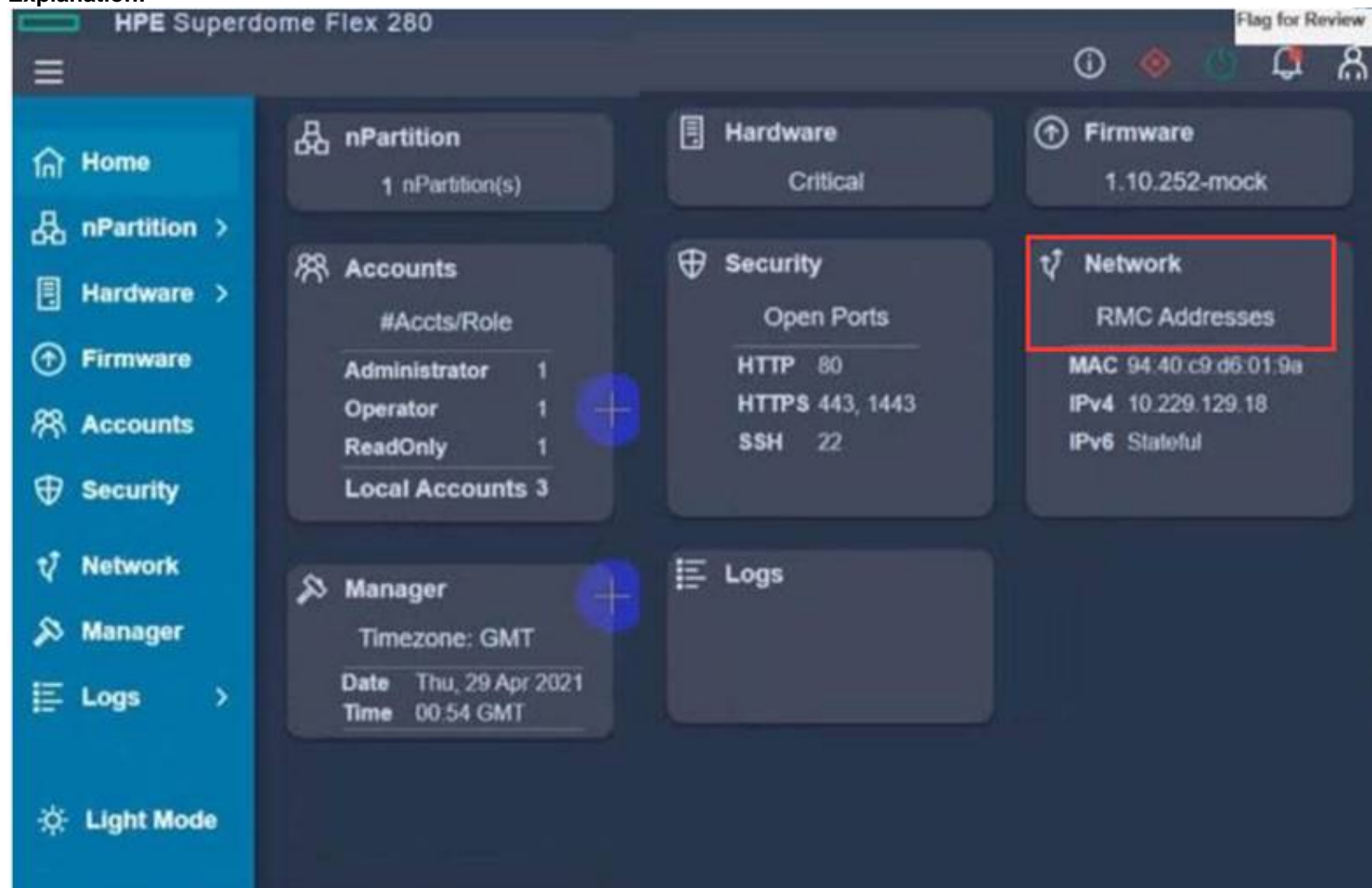


- A. Mastered
- B. Not Mastered

Answer: A



**Explanation:**



**NEW QUESTION 10**

Your customer uses HPE OneView to manage their HPE Synergy environment. They plan to use it to manage a new set equipment that includes.

- 20 HPE ProLiant DL365 Gen10 Plus servers
- 20 HPE ProLiant DL380 Gen10 Plus servers
- 5 HPE Primera 650
- 5 HPE MSA 2062 Storage Array

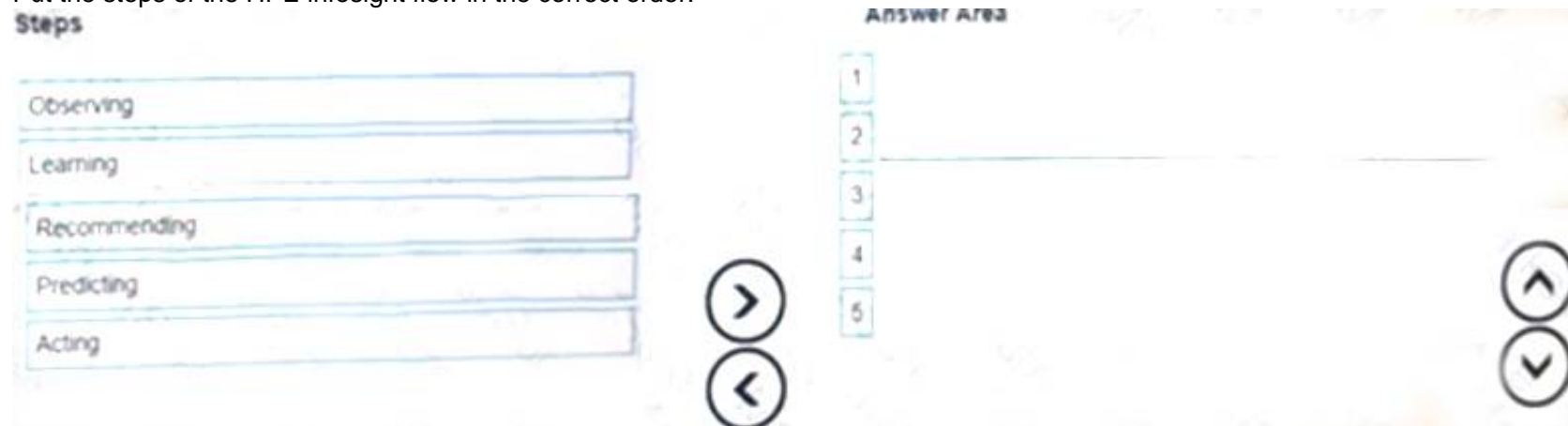
Which statements about how OneView will work with this new equipment are true? (Select two)

- A. HPE ProLiant DL365 Gen10 Plus servers are not supported in HPE OneView
- B. HPE MSA 2062 Storage Array is not supported in HPE OneView
- C. HPE OneView replaces array management tools for both types of array
- D. HPE ProLiant DL380 Gen10 Plus servers have an HPE OneView license included
- E. HPE Primera 650 can be managed using HPE OneView.

**Answer:** AD

**NEW QUESTION 10**

Put the steps of the HPE insight flow in the correct order.



- A. Mastered
- B. Not Mastered

**Answer:** A

**Explanation:**

(observing, learning, predicting, recommending, acting)

**NEW QUESTION 12**

Which statement about HPE Superdome Flex 280 is true?

- A. It supports 2 to 8 sockets in 2-socket increments.
- B. it cannot be managed using HPE OneView.

- C. It must be equipped with at least 768 GB of memory.  
 D. It can support up to two nPars with an external RMC.

Answer: C

#### NEW QUESTION 14

Your customer plans to deploy HPE OneView for VMware vCenter Server together with HPE Storage Integration Pack for VMware vCenter. The customer wants to use them to manage HPE Synergy Gen10 compute modules. HPE ProLiant Gen 10 servers and an MSA array. Which statement about compatibility of the existing environment with the planned software components is true?

- A. Both HPE Synergy Gen10 full-height compute module plugins will require a license  
 B. HPE OneView for VMware vCenter Server does not support standalone HPE ProLiant servers  
 C. To use the required plugins HPE ProLiant Gen10 systems must be managed using HPE OneView  
 D. HPE Storage integration Pack for VMware vCenter does not support MSA arrays

Answer: B

#### NEW QUESTION 19

Your customer has 6 logical enclosures spanning 18 HPE Synergy frames. The customer needs to add one more logical enclosure based on 5 HPE Synergy frames

How will this change impact the customer environment?

- A. The customer can add a new logical enclosure to the existing setup because the maximum number of logical enclosures in a single management ring is not reached.  
 B. The customer has to expand the management ring capacity either by adding HPE Composer 2 modules or adding memory to reach 128GB per module.  
 C. The customer has to create a new management ring for new logical enclosure because the maximum number of frames in a single management ring is reached.  
 D. The customer can add a new logical enclosure to an existing setup once all required licenses are added to HPE OneView and associated with the new frames.

Answer: A

#### NEW QUESTION 22

Match each HPE OneView network type with its definition.

Network Type	Definition
Internal network	A network that contains multiple networks on a single uplink set that allows your customer to share uplinks with those networks.
Tagged network	A network in which any tagged packets are dropped and forwarding is done by a MAC address.
Tunnel network	A network with a dedicated set of uplink ports used to pass a group of VLANs without changing the VLAN tags.
Untagged network	A network that does not utilize any uplink ports and is used for communication between servers in the same frame.

- A. Mastered  
 B. Not Mastered

Answer: A

Explanation:

Network Type	Definition
Internal network	A network that contains multiple networks on a single uplink set that allows your customer to share uplinks with those networks.
Tagged network	A network in which any tagged packets are dropped and forwarding is done by a MAC address.
Tunnel network	A network with a dedicated set of uplink ports used to pass a group of VLANs without changing the VLAN tags.
Untagged network	A network that does not utilize any uplink ports and is used for communication between servers in the same frame.

#### NEW QUESTION 24

What is one of the benefits of using HPE Composer 2?

- A. HPE Composer 2 has 128GB of memory and 4 AMD CPUs to improve performance of the management system  
 B. HPE Composer 2 modules are required to manage HPE virtual Connect SE 100GD F32 Modules for Synergy  
 C. The administrator can access an HPE Synergy Composer 2 appliance remotely to perform First Time Setup  
 D. A pair of HPE Composer 2 modules can manage 42 frames, compared to 21 frames managed by HPE Composer



Answer: A

NEW QUESTION 27

Your customer wants to compare HPE Superdome Flex with HPE Superdome Flex 280. Which statement about these two systems is true?

- A. Only HPE Superdome Rex 280 can be managed using HPE OneView
- B. Only HPE Superdome Flex supports HPE Persistent Memory
- C. Only HPE Superdome Flex 280 can support multiple nPars
- D. Only HPE Superdome Flex supports 32 sockets and 48TB of memory

Answer: A

NEW QUESTION 30

Match each HPE Synergy logical component with the definition.

Component		Definition
Enclosure group		Acts as a recipe for creating a group that represents the available networks, uplink sets, and interconnect settings for a set of physical interconnects in a set of enclosures.
Logical enclosure		A single administrative entity that consists of the configuration for a set of interconnects in a single enclosure or a frame link topology.
Logical interconnect		A logical resource that defines a consistent configuration for an enclosure or a set of enclosures making up a logical enclosure.
Logical interconnect group		Contains the configuration intended for a set of physical enclosures.

- A. Mastered
- B. Not Mastered

Answer: A

Explanation:

Component		Definition
Enclosure group	Logical interconnect group	Acts as a recipe for creating a group that represents the available networks, uplink sets, and interconnect settings for a set of physical interconnects in a set of enclosures.
Logical enclosure	Logical interconnect	A single administrative entity that consists of the configuration for a set of interconnects in a single enclosure or a frame link topology.
Logical interconnect	Enclosure group	A logical resource that defines a consistent configuration for an enclosure or a set of enclosures making up a logical enclosure.
Logical interconnect group	Logical enclosure	Contains the configuration intended for a set of physical enclosures.

NEW QUESTION 34

Your customer added a new Ethernet network in HPE Oneview mat is used to manage their HPE Synergy platform. When the customer tries to connect one of the compute nodes to this network through the server profile, this network is not available. What must be done to fix this issue?

- A. Check the Logical Enclosure settings and verify if the maximum number of networks allowed for this LE is reached.
- B. To make this network available to use in the server profile, the customer must enable the Smart Link feature within network definition.
- C. The newly created network must be added to the uplink set within the LIG, and Logical interconnect configuration must be updated from the LIG.
- D. Check within the server profile which server hardware is used and perform the Refresh operation on this compute node to get the latest adapter information.

Answer: C

NEW QUESTION 36

Your customer plans to deploy a VMware ESXi with HPE Synergy platform. They plan to use Distributed Switches and DRS cluster You are preparing a proposal with the following components:  
- HPE Synergy frame with ten HPE Synergy 480 Gen10 Plus compute modules  
- two HPE Virtual Connect SE 100Gb F32 Modules for Synergy  
- an appropriate number of the vSphere Standard licenses for each compute node  
- one HPE D3940 Storage Modules with 40 SSDs - all required cables and options Which statement about this proposal is true?

- A. One HPE Virtual Connect SE 100Gb F32 Module for Synergy should be replaced with 50GD/S ILM
- B. vSphere Standard licenses should be replaced with Enterprise Plus licenses to enable requested features
- C. 2 additional HPE Synergy 480 Gen10 Plus compute modules can be added to this setup
- D. 20 SSD drives should be removed from this setup, as D3940 supports only 20 SSD or SAS drive.

**Answer:** B

#### NEW QUESTION 40

Your customer has the following HPE Synergy setup:

- 15 HPE Synergy 12000 frames with 50Gb connectivity to each server port
- 2 HPE Composer 2 modules
- 15 HPE D3940 Storage Modules, one per frame
- 2 HPE 12Gb SAS switches per frame Which statement about this setup is true?

- A. The customer must create at least five logical enclosures for this setup.
- B. To manage 15 frames, additional HPE Composers are required.
- C. The customer can install up to 12 HPE Synergy 480 compute nodes per frame.
- D. If properly cabled, any compute node can access any HPE D3490 storage module

**Answer:** A

#### NEW QUESTION 42

Your customer has an HPE Synergy platform deployed and managed using HPE OneView. The customer also has HPE Superdome Flex with RMC deployed. They plan to deploy a second nPar and HPE Superdome Flex 280. They plan to manage new components using HPE OneView. What must be done to achieve this goal?

- A. The customer must use IL05 to add HPE Superdome Flex systems to HPE OneView
- B. The customer should deploy an HPE OneView appliance for HPE Superdome Flex management
- C. The customer must add a second Rack Management Controller for HPE Superdome Flex 280
- D. The customer has to add HPE Superdome Flex to the HPE OneView used to manage HPE Synergy

**Answer:** C

#### NEW QUESTION 47

Which statement about the HPE D3940 storage module is true?

- A. SATA drives requires redundant 10 adapters to be installed in this module
- B. Up to five modules can be installed in a single frame with Gen10 servers
- C. it is configured through CLI available from HPE Synergy console
- D. Only one type of drives (SATA, SAS, SSD) can be installed in each module

**Answer:** C

#### NEW QUESTION 52

What is a limitation when creating a server profile?

- A. BIOS settings can be changed only when UEFI optimized is selected as boot mode
- B. ILO management is limited to the integration with Active Directory or LDAP
- C. Administrator cannot define more than 8 connections within a server profile
- D. It is not possible to create shared volumes on demand through a server profile

**Answer:** B

#### NEW QUESTION 57

.....

## THANKS FOR TRYING THE DEMO OF OUR PRODUCT

Visit Our Site to Purchase the Full Set of Actual HPE0-S60 Exam Questions With Answers.

We Also Provide Practice Exam Software That Simulates Real Exam Environment And Has Many Self-Assessment Features. Order the HPE0-S60 Product From:

<https://www.2passeasy.com/dumps/HPE0-S60/>

## Money Back Guarantee

### HPE0-S60 Practice Exam Features:

- \* HPE0-S60 Questions and Answers Updated Frequently
- \* HPE0-S60 Practice Questions Verified by Expert Senior Certified Staff
- \* HPE0-S60 Most Realistic Questions that Guarantee you a Pass on Your FirstTry
- \* HPE0-S60 Practice Test Questions in Multiple Choice Formats and Updatesfor 1 Year