

Juniper

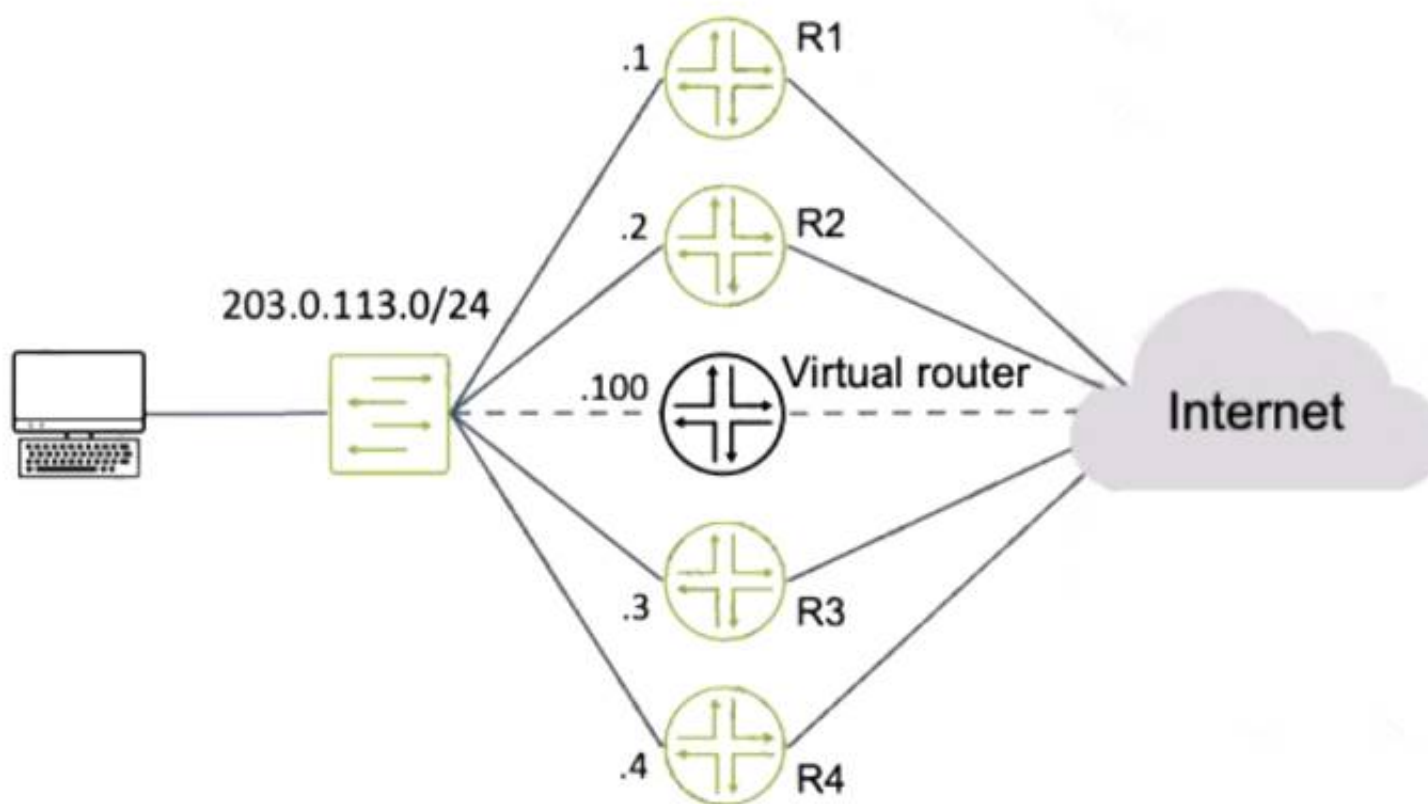
Exam Questions JN0-363

Service Provider Routing and Switching Specialist (JNCIS-SP)



NEW QUESTION 1

Exhibit



Routers R1 and R4 have a VRRP priority of 90, while R2 and R3 have default VRRP priorities. Referring to the exhibit, which router will be elected as the primary VRRP router?

- A. R3
- B. R4
- C. R2
- D. R1

Answer: D

NEW QUESTION 2

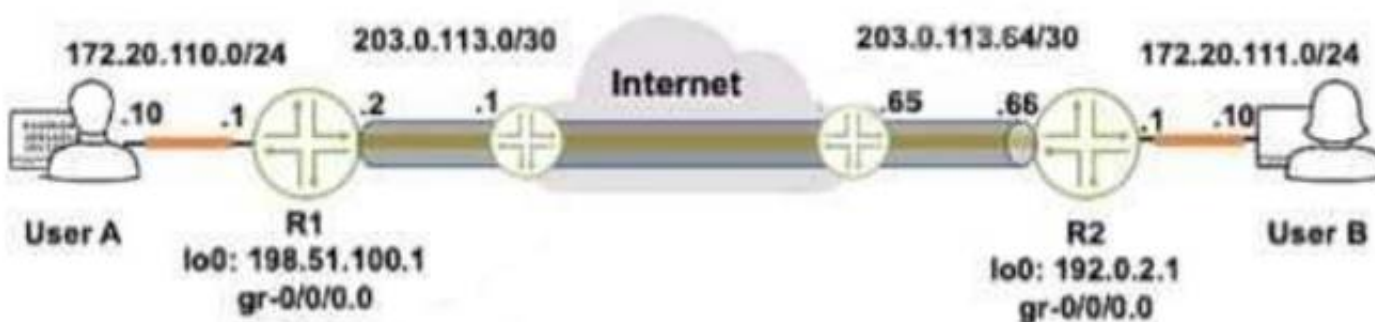
What are two types of SIDs used in segment routing? (Choose two.)

- A. node
- B. adjacency
- C. link
- D. interface

Answer: AB

NEW QUESTION 3

Exhibit



Referring to the exhibit, how do you verify the status of the tunnel from R1?

- A. Issue the ping 172.20.111.10 source 172.20.110.1 command.
- B. Issue the ping 172.20.111.10 source 198.51.100.1 command.
- C. Issue the ping 172.20.iii.io source 203.0.113.2 command.
- D. Issue the ping 172.20. II
- E. 10 command.

Answer: C

NEW QUESTION 4

Which statement is correct about the FE80::/10 prefix?

- A. This prefix range is used for the link local address.
- B. This prefix range is used on the loopback interface.
- C. This prefix range is reserved for multicast applications
- D. This prefix range is not reserved.

Answer: A

NEW QUESTION 5

You have created a routing instance named vr3 that will provide access to Server 2 (10.0.0.2) (or the hosts on the 10.10.10.0/24 network. Which command would you use to test connectivity between vr3 and Server 2?

- A. user@vr3> ping 10.0.0.2 count 5
- B. user@vr3> ping 10.0.0.2 count 5 source 10.10.10.1
- C. user@router1> ping 10.0.0.2 count 5
- D. user@router1> ping 10.0.0.2 routing-instance vr3 count 5

Answer: C

NEW QUESTION 6

Exhibit

```
[edit]
user@router# show interfaces ge-0/0/0
unit 0 {
    family bridge {
        interface-mode trunk;
        vlan-id-list 101-120;
    }
}
[edit]
user@router# show interfaces ge-0/0/1
flexible-vlan-tagging;
unit 0 {
    vlan-id 200;
    family bridge {
        interface-mode trunk;
        inner-vlan-id-list 101-120;
    }
    ...
}
[edit]
user@router# show bridge-domains
...
[edit]
user@router# show bridge-domains
bd {
    vlan-id-list 101-120;
}
```

Referring to the exhibit, which two statements are correct? (Choose two.)

- A. Traffic ingressing ge-0/0/0 that is tagged with VLAN 101 will egress ge-0/0/1 unchanged.
- B. Traffic ingressing ge-0/0/0 that is tagged with VLAN 100 will be dropped.
- C. Traffic ingressing ge-0/0/0 that is tagged with VLAN 200 will egress ge-0/0/1 with an outer VLAN tag of 200.
- D. Traffic ingressing ge-0/0/0 that is tagged with VLAN 101 will egress ge-0/0/1 with an outer VLAN tag of 200.

Answer: AB

NEW QUESTION 7

Exhibit

```
user@R2> show ospf interface extensive
Interface State Area DR ID BDR ID Nbrs
ge-0/0/3.0 DR 0.0.0.1 192.168.1.2 192.168.1.1 1 Type: LAN, Address: 172.26.1.2, Mask:
255.255.255.252, MTU: 1500, Cost: 1
DR addr: 172.26.1.2, BDR addr: 172.26.1.1, Priority: 128, Adj count: 1
Hello: 10, Dead: 40, ReXmit: 5, Not Stub
Auth type: None Topology default (ID 0) -> Cost: 0
ge-0/0/1.0 BDR 0.0.0.0 192.168.1.3 192.168.1.2 1
Type: LAN, Address: 172.26.2.1, Mask: 255.255.255.252, MTU: 1500, Cost: 1
DR addr: 172.26.2.2, BDR addr: 172.26.2.1, Priority: 128, Adj count: 1 Hello: 10,
Dead: 40, ReXmit: 5, Not Stub
Auth type: None
Topology default (ID 0) -> Cost: 0
```

Referring to the exhibit, which two statements are correct? (Choose two.)

- A. The OSPF Interfaces are configured as point-to-point.

- B. The ge-0/0/1.0 Interface is configured as passive.
- C. The R2 device is an ABR.
- D. Junos OS default OSPF hello timers and dead intervals are used on all interfaces.

Answer: BD

NEW QUESTION 8

Which two statements are correct about the BGP next-hop attribute value? (Choose two.)

- A. By default, the next-hop value is changed across IBGP links.
- B. By default, the next-hop value is changed across EBGP links.
- C. By default, the next-hop value is not changed across IBGP links.
- D. By default, the next-hop value is not changed across EBGP links.

Answer: A

NEW QUESTION 9

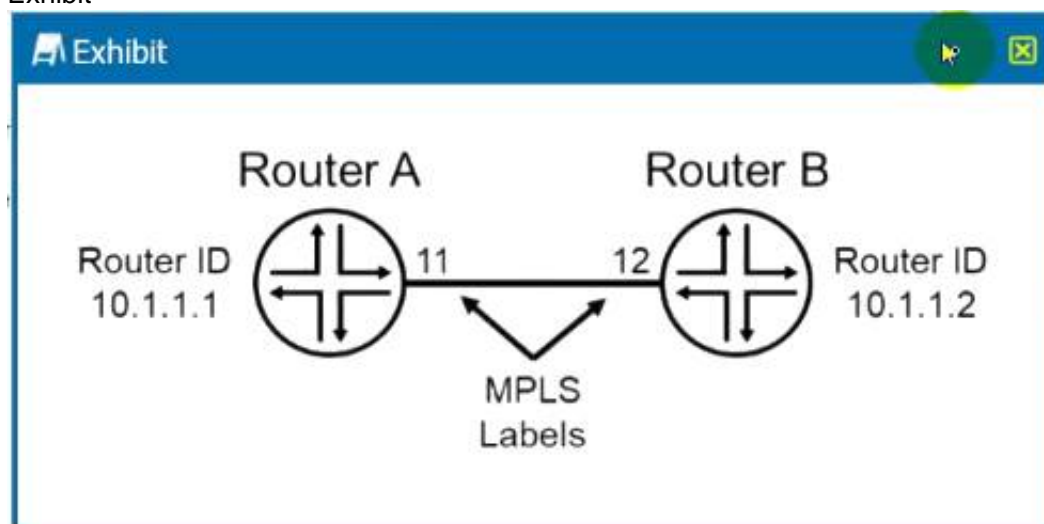
What are three types of MPLS routers? (Choose three.)

- A. transit routers
- B. peering routers
- C. egress routers
- D. aggregation routers
- E. ingress routers

Answer: ACE

NEW QUESTION 10

Exhibit



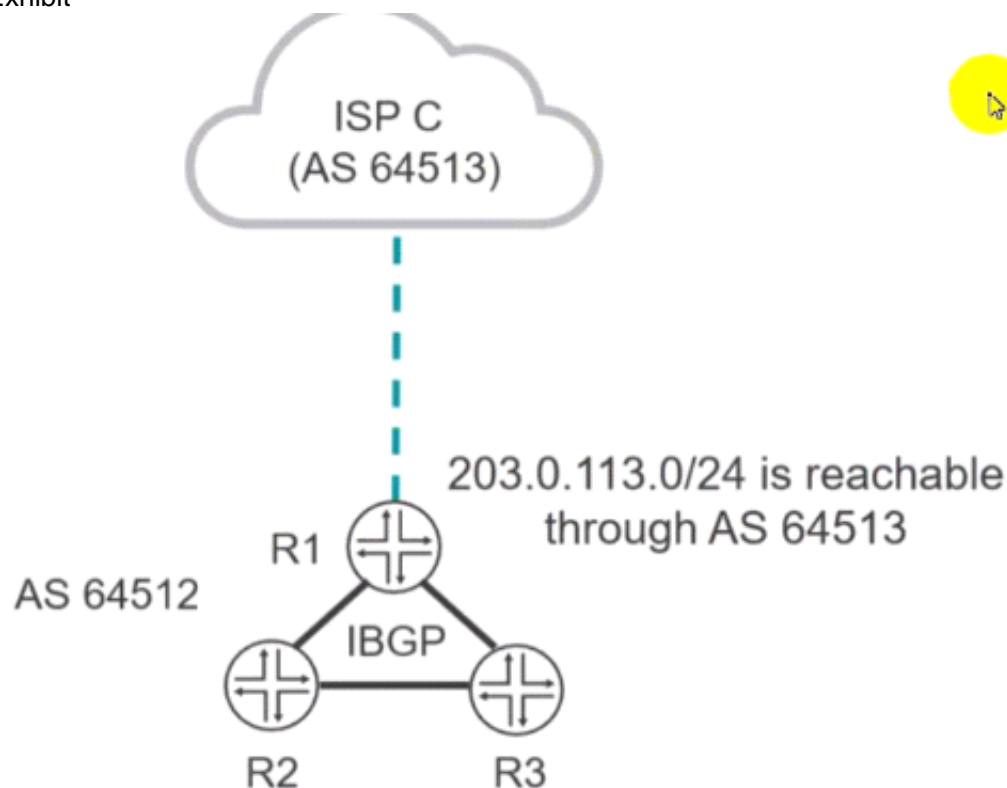
The routers shown in the exhibit are configured for segment routing. In this scenario, what is the adjacency SIO that Router B advertises to Router A?

- A. 12
- B. 10.1.1.1
- C. 10.1.1.2
- D. 11

Answer: B

NEW QUESTION 10

Exhibit



You confirm that the R2 and R3 routers are receiving a BGP route to the 203.0.113.0/24 network, but both routers display the route as hidden. Referring to the exhibit, which two actions solve this problem? (Choose two.)

- A. Apply the routing policy on R1 as an export policy to the IBGP group.
- B. Apply the routing policy on R1 as an Import policy to the IBGP group.
- C. Configure a routing policy on R1 that sets the next hop for the 203.0.113.0/24 BGP route to the IP address that R1 uses for IBGP peering.
- D. Configure a routing policy on R1 that sets the next hop for the 203.0.113.0/24 BGP route to the IP address that R1 uses for EBGP peering.

Answer: CD

NEW QUESTION 14

Exhibit

Exhibit
✕

```
[edit routing-options]
user@R1# show
static {
  defaults {
    preference 20;
  }
  route 0.0.0.0/0 {
    next-hop 172.24.0.1;
    preference 5;
  }
  route 172.24.0.0/24 next-hop [ 172.24.0.100 172.24.0.101 ];
forwarding-table {
  export lbpp;
}
[edit]
user@R1# show policy-options policy-statement lbpp
term 1 {
  then {
    load-balance per-packet;
  }
}
```

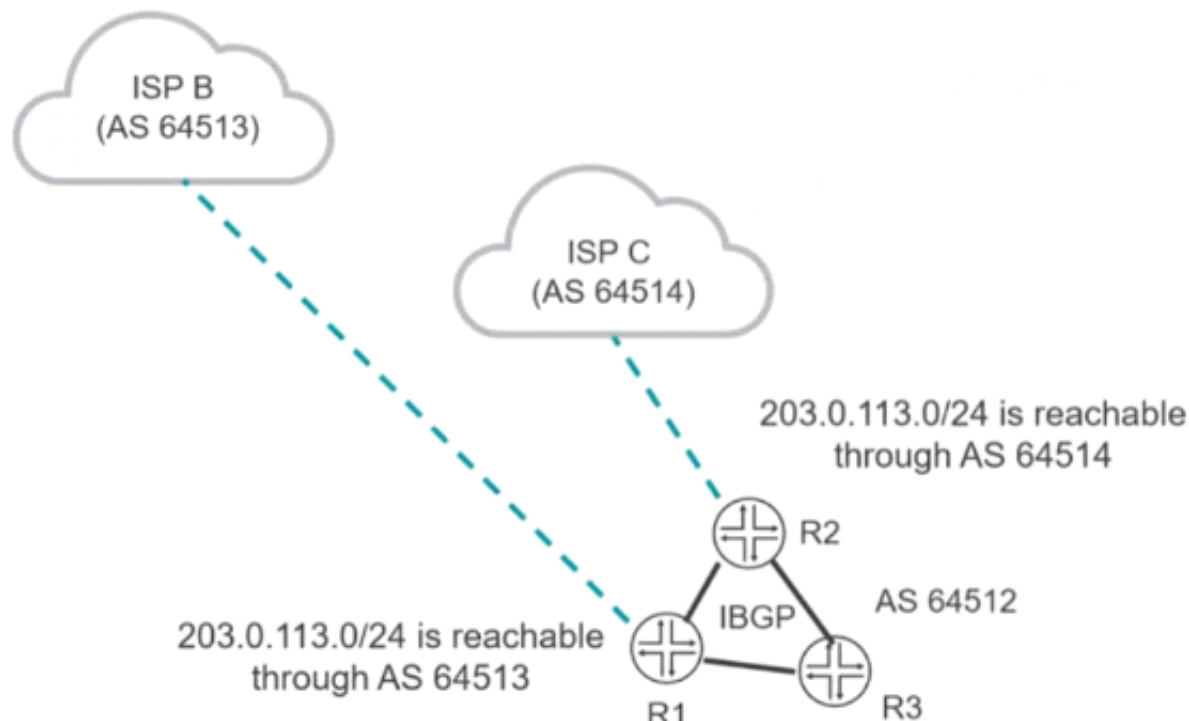
Which type of load balancing is shown in the exhibit?

- A. elastic load balancing
- B. per-packet load balancing
- C. per-flow load balancing
- D. network load balancing

Answer: D

NEW QUESTION 16

Exhibit



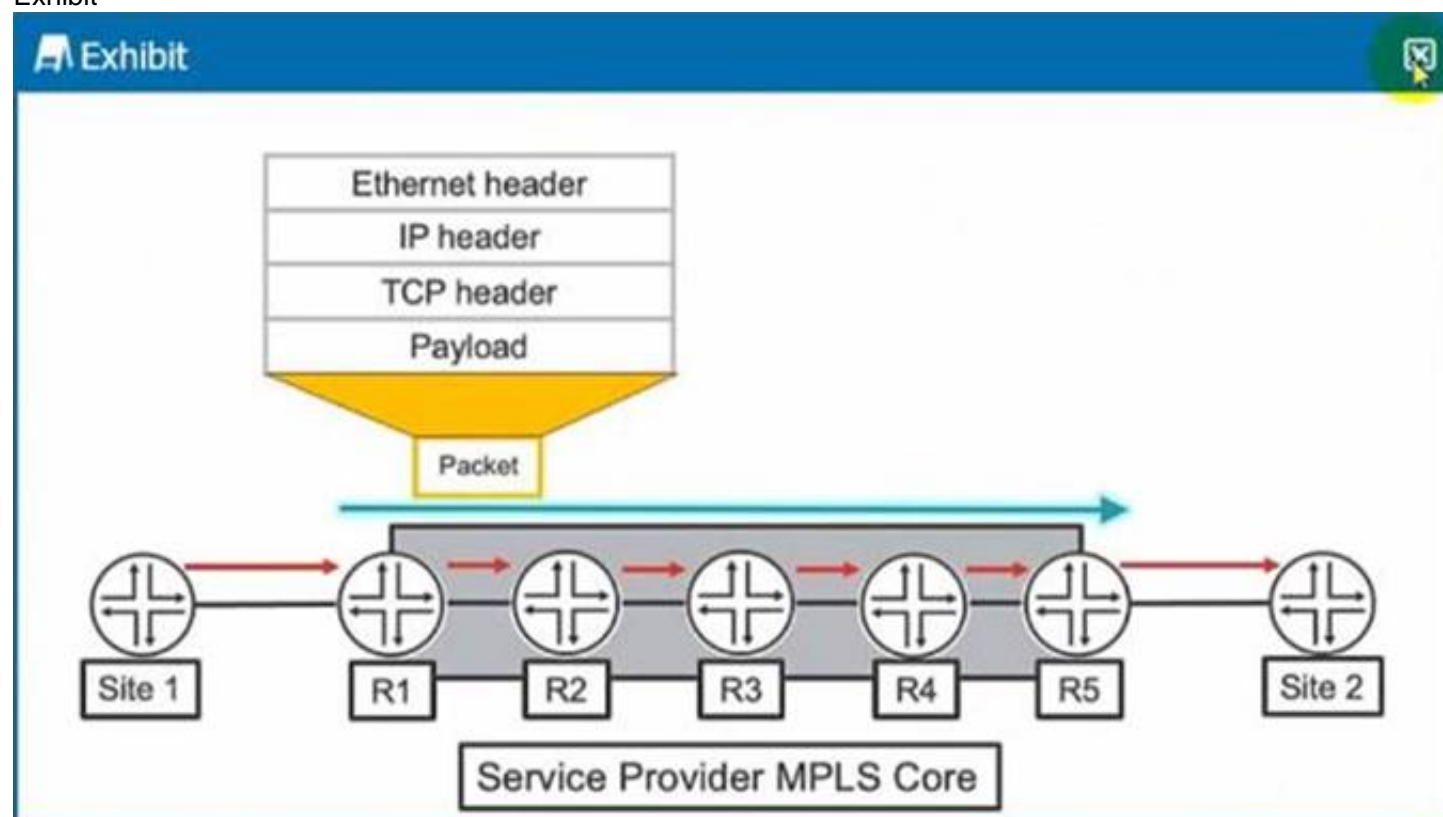
You want the R1 and R3 routers to forward traffic destined to the 203.0.113.0/24 network through R2. Which BGP attribute would you modify to satisfy this requirement?

- A. community
- B. origin
- C. MED
- D. local preference

Answer: C

NEW QUESTION 18

Exhibit



Which two statements are correct about the actions taken as the packet traverses the service provider MPLS network from Site 1 to Site 2 as shown in the exhibit? (Choose two.)

- A. R2 will perform a lookup using the mpls.0 table.
- B. R1 will perform a lookup using the inet.3 table.
- C. R1 will perform a lookup using the mpls.0 table.
- D. R2 will perform a lookup using the inet.3 table.

Answer: A

NEW QUESTION 19

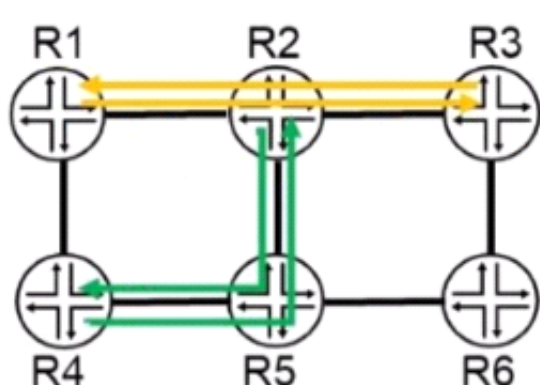
You want to enable a routing platform with redundant REs to switch from a primary RE to a backup RE without alerting peer nodes. Which two technologies would you use to satisfy this requirement? (Choose two.)

- A. GRES
- B. VRRP
- C. NSR
- D. ISSU

Answer: BC

NEW QUESTION 21

Exhibit



— RVSP LSP with 300 Mbps reserved

— RVSP LSP with 700 Mbps reserved

The exhibit shows a topology with 1 Gbps interfaces between routers, and four RSVP LSPs operating with the respective bandwidth reservations. Which path will be selected for a new LSP from R4 to R6 with a bandwidth reservation of 400 Mbps?

- A. R4 -> R1 -> R2 -> R5 -> R6
- B. R4 -> R5 -> R6
- C. R4 -> R5 -> R2 -> R3 -> R6
- D. R4 -> R1 -> R2 -> R3 -> R6

Answer: A

NEW QUESTION 26

Exhibit.

Exhibit

```
[edit routing-options]
user@router# show
aggregate {
  route 172.21.0.0/22;
}

[edit routing-options]
user@router# run show route protocol aggregate

inet.0: 21 destinations, 21 routes (20 active, 0 holddown, 1 hidden)

inet6.0: 10 destinations, 10 routes (10 active, 0 holddown, 0 hidden)

[edit routing-options]
user@router# run show route hidden

inet.0: 21 destinations, 21 routes (20 active, 0 holddown, 1 hidden)
+ = Active Route, - = Last Active, * = Both

172.21.0.0/22      [Aggregate] 00:12:09
                  Reject

inet6.0: 10 destinations, 10 routes (10 active, 0 holddown, 0 hidden)
```

Referring to the exhibit, you have configured an aggregate route that represents the 172.21.0.0/24, 172.21.1.0/24, and 172.21.2.0/24 networks. However, when you view the routing table, your new route is hidden.

Which action would you perform to determine the problem?

- A. Verify that you have active contributing routes on the device.
- B. Verify that you have configured a policy on the device to accept aggregate routes.
- C. Verify that you have defined a metric value for the aggregate route.
- D. Verify that you have set the preference to a lower default value.

Answer: D

NEW QUESTION 27

Exhibit

```
user@router-re0> show system s?
Possible completions:
  services      Show service applications information
  snapshot      Show snapshot information
  software      Show loaded JUNOS extensions
  statistics    Show statistics for protocol
  storage       Show local storage data
```

You have configured graceful RE switchover (GRES), however you cannot complete the show system switchover command.

Referring to the exhibit, what is the problem?

- A. The command is only available if non-stop routing is enabled.
- B. The command is only available on the backup Routing Engine.
- C. The command is only available if a backup router is configured.
- D. The command is only available if graceful restart is enabled.

Answer: B

NEW QUESTION 28

Which two statements are correct about IS-IS? (Choose two.)

- A. A level 1 only router can never form an adjacency with a level 2 only router.
- B. For level 2 adjacencies, the area IDs can be different.
- C. For level 2 adjacencies, the area IDs must be the same.
- D. A level 1 only router can form an adjacency with a level 2 only router.

Answer: CD

NEW QUESTION 33

Exhibit

Exhibit
✕

```

user@switch> show spanning-tree bridge
STP bridge parameters
Context ID                : 0
Enabled protocol          : RSTP
Root ID                   : 8192.50:c5:8d:ae:db:41
Hello time                : 10 seconds
Maximum age               : 40 seconds
Forward delay             : 30 seconds
Message age               : 0
Number of topology changes : 6
Time since last topology change : 781 seconds
Topology change initiator : ge-0/0/14.0
Topology change last recvd. from : 2c:6b:f5:31:06:0b
Local parameters
Bridge ID                 : 8192.50:c5:8d:ae:db:41
Extended system ID       : 0
Internal instance ID     : 0
          
```

Which two statements are correct about the information shown in the exhibit? (Choose two.)

- A. The root bridge is reachable using the ge-0/0/14 interface.
- B. This switch is the root bridge for this spanning tree topology.
- C. This switch has a bridge priority of 8k.
- D. The root bridge's priority is 4k.

Answer: BD

NEW QUESTION 36

Which two interface types are used as tunnel endpoints? (Choose two.)

- A. ae
- B. ip
- C. ge
- D. gr

Answer: BC

NEW QUESTION 41

Exhibit

Exhibit

```

user@router> show mpls lsp ingress detail
Ingress LSP: 1 sessions
192.168.0.3
  From: 0.0.0.0, State: Dn, ActiveRoute: 0, LSPname: to-R3
  ActivePath: (none)
  LSType: Static Configured, Penultimate hop popping
  LoadBalance: Random
  Follow destination IGP metric
  Encoding type: Packet, Switching type: Packet, GPID: IPv4
  LSP Self-ping Status : Enabled
  Primary                               State: Dn
    Priorities: 7 0
    SmartOptimizeTimer: 180
    Flap Count: 0
    MBB Count: 0
    Will be enqueued for recomputation in 18 second(s).
    1 Mar  9 23:22:22.998 CSPP: could not determine self
user@router> show ted database
TED database: 0 ISIS nodes 0 INET nodes
[edit protocols]
user@router# show
ospf {
  area 0.0.0.0 {
    interface ge-0/0/2.0;
    interface ge-0/0/4.0;
  }
}
rsvp {
  interface all;
}
bgp {
  group Int {
    type internal;
    local-address 192.168.0.1;
    export nhs;
    neighbor 192.168.0.3;
  }
}
mpls {
  label-switched-path to-R3 {
    to 192.168.0.3;
  }
  interface all;
}

```

The LSP is not establishing correctly.

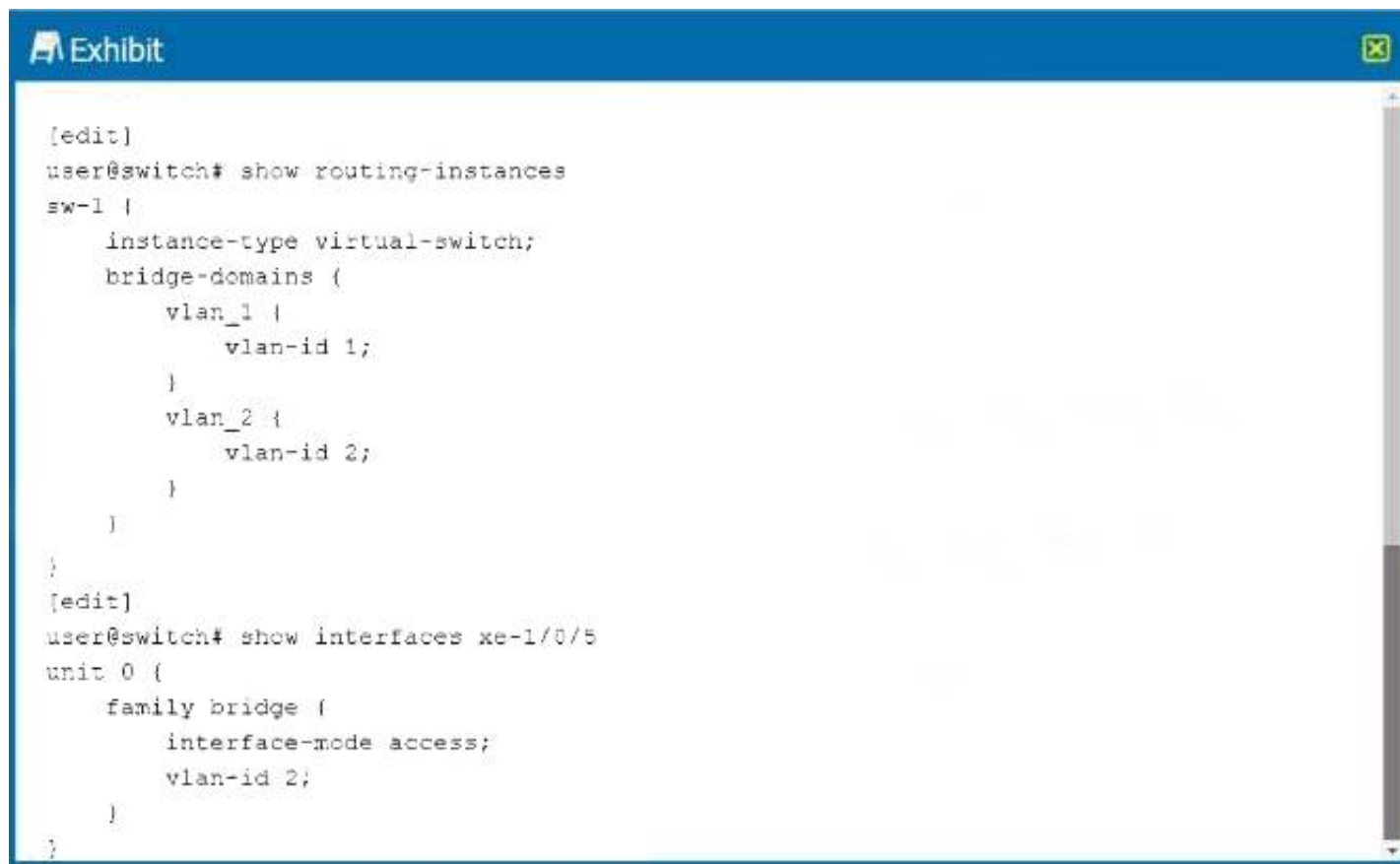
Referring to the exhibit, what should you do to solve the problem?

- A. Enable traffic engineering for the OSPF protocol.
- B. Enable traffic engineering for the IS-IS protocol.
- C. Enable traffic engineering for the BGP protocol.
- D. Enable traffic engineering for the RSVP protocol.

Answer: D

NEW QUESTION 43

Exhibit



```
[edit]
user@switch# show routing-instances
sw-1 {
    instance-type virtual-switch;
    bridge-domains {
        vlan_1 {
            vlan-id 1;
        }
        vlan_2 {
            vlan-id 2;
        }
    }
}
[edit]
user@switch# show interfaces xe-1/0/5
unit 0 {
    family bridge {
        interface-mode access;
        vlan-id 2;
    }
}
```

You are asked to assign interface xe-1/0/5 to a virtual switch. What must be accomplished to complete the configuration?

- A. Interface xe-1/0/5 must be added to routing-instance sw-1 vlan_2.
- B. Interface xe-1/0/5 must be a trunk port.
- C. Interface xe-1/0/5 must be added to routing-instance sw-1.
- D. An IRB interface must be configured to routing-instance sw-1 vlan_2.

Answer: C

NEW QUESTION 44

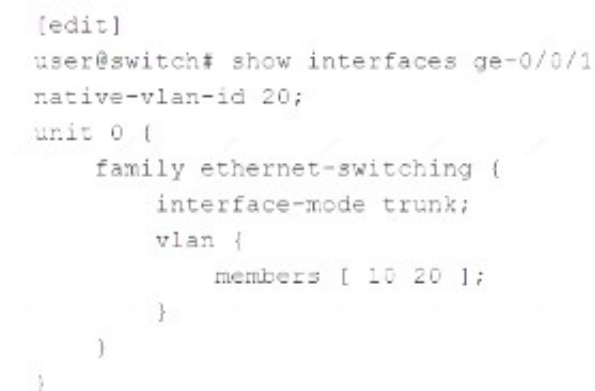
You are bringing a new network online with three IS-IS routers using default Junos election priorities. The routers are configured as Level 2 only IS-IS routers. Which statement is true about the DIS election in this scenario?

- A. The router with the highest MAC address will be elected as the DIS.
- B. The router with the highest numerical lo0 IP address will be elected as the DIS.
- C. The router with the lowest numerical lo0 IP address will be elected as the DIS.
- D. The router with the lowest MAC address will be elected as the DIS.

Answer: B

NEW QUESTION 49

Exhibit



```
[edit]
user@switch# show interfaces ge-0/0/1
native-vlan-id 20;
unit 0 {
    family ethernet-switching {
        interface-mode trunk;
        vlan {
            members [ 10 20 ];
        }
    }
}
```

Referring to the exhibit, what will happen to untagged frames?

- A. The untagged frames are dropped.
- B. The untagged frames are load balanced between VLAN 10 and VLAN 20.
- C. The untagged frames are associated with VLAN 10.
- D. The untagged frames are associated with VLAN 20.

Answer: A

NEW QUESTION 53

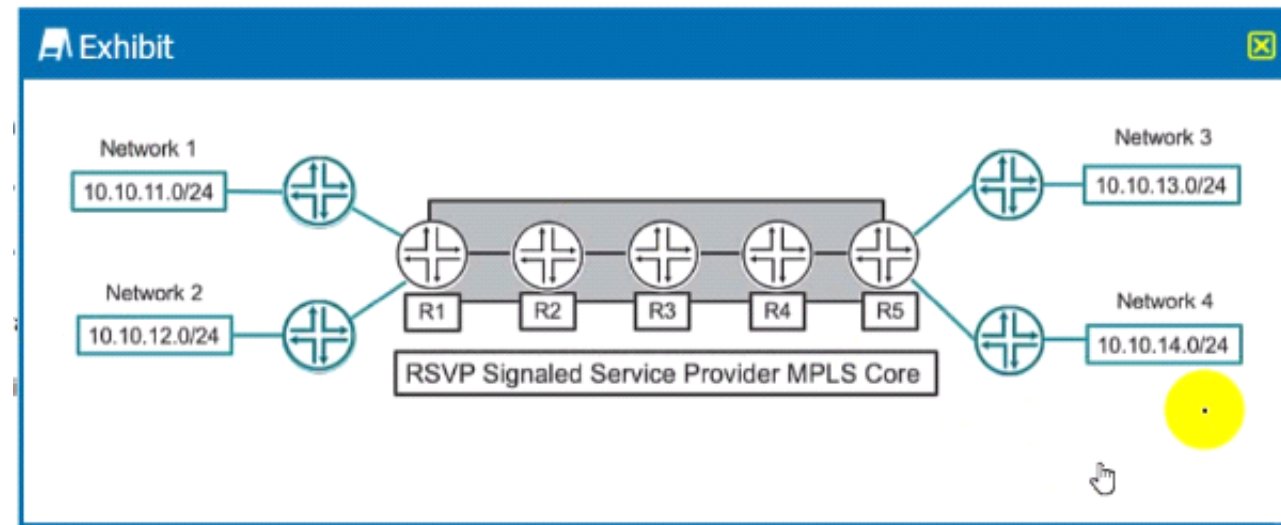
You are asked to configure an LSP which uses the OSPF link state database for path computations. Which two statements are correct in this scenario? (Choose two.)

- A. You must use the no-cspf parameter in the label-switched-path configuration.
- B. Traffic engineering extensions are enabled by default in OSPF.
- C. Traffic engineering extensions are not enabled by default in OSPF.
- D. You must use the policing parameter in the label-switched-path configuration.

Answer: AC

NEW QUESTION 58

Exhibit button



Which two statements are correct about the service provider MPLS network shown in the exhibit? (Choose two.)

- A. R3 will perform a label pop operation on the transport MPLS label.
- B. Traffic from Network 1 to Network 3 and traffic from Network 1 to Network 4 each need their own unique label-switched path.
- C. Traffic from Network 1 to Network 3 and from Network 1 to Network 4 can share the same label-switched path.
- D. R3 will perform a label swap operation on the transport MPLS label.

Answer: AD

NEW QUESTION 62

You are deploying link aggregation groups.

- A. By default, what are two considerations in this scenario? (Choose two.)
- B. There should only be four member links per LAG.
- C. All the ports must have the same speed.
- D. Member links are required to be contiguous ports.
- E. Member links can reside on different members within an MC-LAG.

Answer: BD

NEW QUESTION 63

What is the correct order of BGP attributes for active route selection?

- A. next hop -> local preference -> AS path -> MED -> origin
- B. next hop -> AS path -> local preference -> origin -> MED
- C. next hop -> local preference -> AS path -> origin -> MED
- D. next hop -> origin -> local preference -> AS path -> MED

Answer: C

NEW QUESTION 68

.....

Thank You for Trying Our Product

We offer two products:

1st - We have Practice Tests Software with Actual Exam Questions

2nd - Questions and Answers in PDF Format

JN0-363 Practice Exam Features:

- * JN0-363 Questions and Answers Updated Frequently
- * JN0-363 Practice Questions Verified by Expert Senior Certified Staff
- * JN0-363 Most Realistic Questions that Guarantee you a Pass on Your First Try
- * JN0-363 Practice Test Questions in Multiple Choice Formats and Updates for 1 Year

100% Actual & Verified — Instant Download, Please Click
[Order The JN0-363 Practice Test Here](#)