

Exam Questions MD-102

Endpoint Administrator

<https://www.2passeasy.com/dumps/MD-102/>



NEW QUESTION 1

- (Exam Topic 1)

For each of the following statements, select Yes if the statement is true. Otherwise, select No. NOTE: Each correct selection is worth one point.

Answer Area

Statements	Yes	No
If User1 adds a shortcut to the desktop of Device1, when User1 signs in to Device3, the same shortcut will appear on the desktop.	<input type="radio"/>	<input type="radio"/>
If User1 sets the desktop background to blue on Device2, when User1 signs in to Device4, the desktop background will be blue.	<input type="radio"/>	<input type="radio"/>
If User2 increases the size of the font in the command prompt of Device2, when User2 signs in to Device3, the command prompt will show the increased font size.	<input type="radio"/>	<input type="radio"/>

- A. Mastered
- B. Not Mastered

Answer: A

Explanation:

Text, letter Description automatically generated

NEW QUESTION 2

- (Exam Topic 1)

Which user can enroll Device6 in Intune?

- A. User4 and User2 only
- B. User4 and User 1 only
- C. User1, User2, User3, and User4
- D. User4. User Land User2 only

Answer: B

NEW QUESTION 3

- (Exam Topic 1)

You implement Boundary1 based on the planned changes.

Which devices have a network boundary of 192.168.1.0/24 applied?

- A. Device2 only
- B. Device3 only
- C. Device 1. Device2. and Device5 only
- D. Device 1, Device2, Device3, and Device4 only

Answer: D

Explanation:

Reference:

<https://docs.microsoft.com/en-us/mem/intune/configuration/network-boundary-windows>

NEW QUESTION 4

- (Exam Topic 2)

You need to meet the device management requirements for the developers. What should you implement?

- A. folder redirection
- B. Enterprise State Roaming
- C. home folders
- D. known folder redirection in Microsoft OneDrive

Answer: B

Explanation:

Litware identifies the following device management requirements:

➤ Ensure that Microsoft Edge Favorites are accessible from all computers to which the developers sign in. Enterprise State Roaming allows for the synchronization of Microsoft Edge browser setting, including favorites and reading list, across devices.

Reference:

<https://docs.microsoft.com/en-us/azure/active-directory/devices/enterprise-state-roaming-windows-settings-refer>

NEW QUESTION 5

- (Exam Topic 2)

What should you configure to meet the technical requirements for the Azure AD-joined computers?

- A. Windows Hello for Business from the Microsoft Intune blade in the Azure portal.
- B. The Accounts options in an endpoint protection profile.
- C. The Password Policy settings in a Group Policy object (GPO).

D. A password policy from the Microsoft Office 365 portal.

Answer: A

Explanation:

References:

<https://docs.microsoft.com/en-us/windows/security/identity-protection/hello-for-business/hello-manage-inorgani>

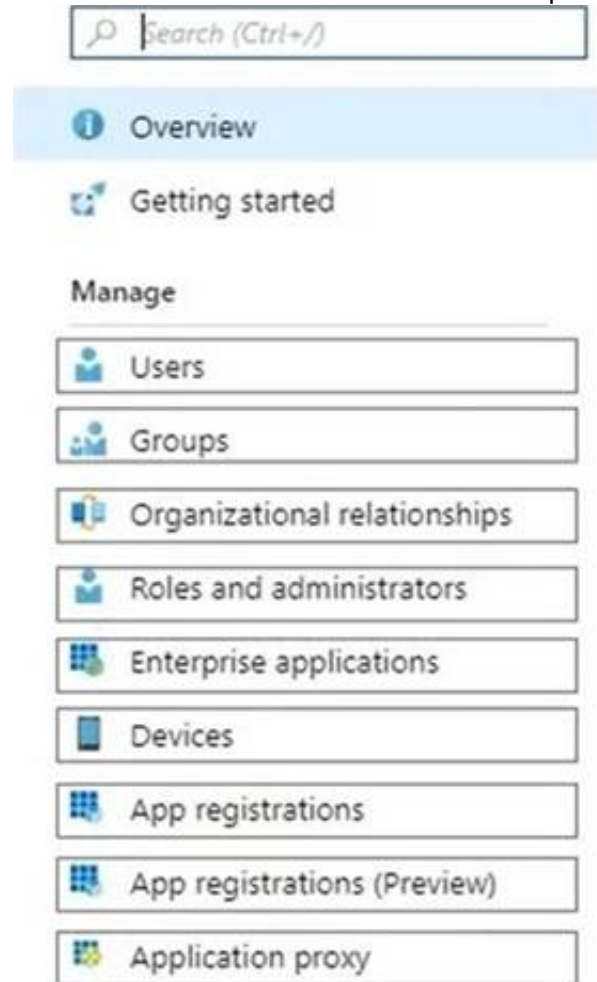
NEW QUESTION 6

- (Exam Topic 2)

You need to meet the technical requirements for Windows AutoPilot.

Which two settings should you configure from the Azure Active Directory blade? To answer, select the appropriate settings in the answer area.

NOTE: Each correct selection is worth one point.



A. Mastered

B. Not Mastered

Answer: A

Explanation:

References:

<https://docs.microsoft.com/en-us/windows/deployment/windows-autopilot/windows-autopilot-reset>

NEW QUESTION 7

- (Exam Topic 2)

What should you use to meet the technical requirements for Azure DevOps?

A. An app protection policy

B. Windows Information Protection (WIP)

C. Conditional access

D. A device configuration profile

Answer: C

Explanation:

References:

<https://docs.microsoft.com/en-us/azure/devops/organizations/accounts/manage-conditional-access? view=azure-devops>

NEW QUESTION 8

- (Exam Topic 3)

You have a Microsoft 365 subscription.

You have 10 computers that run Windows 10 and are enrolled in mobile device management (MDM). You need to deploy the Microsoft 365 Apps for enterprise suite to all the computers.

What should you do?

A. From the Microsoft Intune admin center, create a Windows 10 device profile.

B. From Azure AD, add an app registration.

C. From Azure A

D. add an enterprise application.

E. From the Microsoft Intune admin center, add an app.

Answer: D

Explanation:

To deploy Microsoft 365 Apps for enterprise to Windows 10 devices that are enrolled in Intune, you need to add an app of type “Windows 10 app (Win32)” in the Microsoft Intune admin center and configure the app settings. You can then assign the app to groups of users or devices. References:
https://docs.microsoft.com/en-us/mem/intune/apps/apps-win32-app-management

NEW QUESTION 9

- (Exam Topic 3)

You have an Azure Active Directory (Azure AD) tenant named contoso.com that contains the devices shown in the following table.

Name	Operating system	Azure AD status	Mobile device management (MDM)
Device1	Windows 8.1	Registered	None
Device2	Windows 10	Joined	None
Device3	Windows 10	Joined	Microsoft Intune

Contoso.com contains the Azure Active Directory groups shown in the following table.

Name	Members
Group1	Group2, Device1, Device3
Group2	Device2

You add a Windows Autopilot deployment profile. The profile is configured as shown in the following exhibit.

Create profile

Windows PC

✓ Basics
✓ Out-of-box experience (OOBE)
✓ Assignments
⬅ Review + create

Summary

Basics

Name: Profile1

Description: --

Convert all targeted devices to Autopilot: Yes

Device type: Windows PC

Out-of-box experience (OOBE)

Deployment mode: Self-Deploying (preview)

Join to Azure AD as: Azure AD joined

Skip AD connectivity check (preview): No

Language (Region): Operating system default

Automatically configure keyboard: Yes

Microsoft Software License Terms: Hide

Privacy settings: Hide

Hide change account options: Hide

User account type: Standard

Allow White Glove OOBE: No

Apply device name template: No

Assignments

Included groups: Group1

Excluded groups: --

For each of the following statements, select Yes if the statement is true. Otherwise, select No.

NOTE: Each correct selection is worth one point.

Statements	Yes	No
If Device1 starts in Out of Box Experience (OOBE) mode, the device will be deployed by using Autopilot.	<input type="radio"/>	<input type="radio"/>
If Device2 starts in Out of Box Experience (OOBE) mode, the device will be deployed by using Autopilot.	<input type="radio"/>	<input type="radio"/>
If Device3 starts in Out of Box Experience (OOBE) mode, the device will be deployed by using Autopilot.	<input type="radio"/>	<input type="radio"/>

- A. Mastered
- B. Not Mastered

Answer: A

Explanation:

Box 1: No

Device1 has no Mobile device Management (MDM) configured.

Note: Device1 is running Windows 8.1, and is registered, but not joined. Device1 is in Group1.

Profile1 is assigned to Group1. Box 2: No

Device2 has no Mobile device Management (MDM) configured. Note: Device2 is running Windows 10, and is joined.

Device2 is in Group2. Group2 is in Group1.

Profile1 is assigned to Group1. Box 3: Yes

Device3 has Mobile device Management (MDM) configured. Device3 is running Windows 10, and is joined

Device1 is in Group1.

Profile1 is assigned to Group1.

Mobile device management (MDM) enrollment: Once your Windows 10 device joins Azure AD, Autopilot ensures your device is automatically enrolled with MDMs such as Microsoft Intune. This program can automatically push configurations, policies and settings to the device, and install Office 365 and other business apps without you having to get IT admins to manually sort the device. Intune can also apply the latest updates from Windows Update for Business.

Reference: <https://xo.xello.com.au/blog/windows-autopilot>

NEW QUESTION 10

- (Exam Topic 3)

Your network contains an Active Directory domain named contoso.com. The domain contains a computer named Computer1 that runs Windows 10. You have the groups shown in the following table.

Name	Type	Location
Group1	Universal distribution group	Contoso.com
Group2	Global security group	Contoso.com
Group3	Group	Computer1
Group4	Group	Computer1

Which groups can you add to Group4?

- A. Group2only
- B. Group1 and Group2 only
- C. Group2 and Group3 only
- D. Group1, Group2, and Group3

Answer: C

NEW QUESTION 10

- (Exam Topic 3)

You have a Microsoft 365 subscription that uses Microsoft Intune Suite. You use Microsoft Intune to manage devices.

You have a Windows 11 device named Device1 that is enrolled in Intune. Device1 has been offline for 30 days.

You need to remove Device1 from Intune immediately. The solution must ensure that if the device checks in again, any apps and data provisioned by Intune are removed. User-installed apps, personal data, and OEM-installed apps must be retained.

What should you use?

- A. a Delete action
- B. a Retire action
- C. a Fresh Start action
- D. an Autopilot Reset action

Answer: B

Explanation:

A retire action removes a device from Intune management and removes any apps and data provisioned by Intune. User-installed apps, personal data, and OEM-installed apps are retained. A retire action can be performed on devices that are offline for more than 30 days. References:

<https://docs.microsoft.com/en-us/mem/intune/remote-actions/devices-wipe>

NEW QUESTION 11

- (Exam Topic 3)

You have an Azure AD tenant named contoso.com that contains the devices shown in the following table.

Name	Operating system
Device1	Windows 10
Device2	Android 8.0
Device3	Android 9
Device4	iOS 11.0
Device5	iOS 11.4.1

AH devices contain an app named App1 and are enrolled in Microsoft Intune.

You need to prevent users from copying data from App1 and pasting the data into other apps.

Which type of policy and how many policies should you create in Intune? To answer, select the appropriate options in the answer area.

NOTE: Each correct selection is worth one point.

Answer Area

Policy type:

Minimum number of policies:

- A. Mastered
B. Not Mastered

Answer: A

Explanation:

of Corre Answer Only: The correct answer is app protection policy because it allows you to customize the settings of apps for iOS/iPadOS or Android devices1. One of the settings you can configure is Restrict cut, copy, and paste between other apps, which lets you prevent users from copying data from App1 and pasting the data into other apps2. You only need one policy to apply this setting to all devices that have App1 installed. References: 1: App configuration policies for Microsoft Intune | Microsoft Learn https://learn.microsoft.com/en-us/mem/intune/apps/app-configuration-policies-overview 2: Troubleshoot restricting cut, copy, and paste between applications - Intune | Microsoft Learn https://learn.microsoft.com/en-us/troubleshoot/mem/intune/app-protection-policies/troubleshoot-cut-copy-paste

NEW QUESTION 16

- (Exam Topic 3)

You have an Azure AD tenant named contoso.com that contains the users shown in the following table.

Name	Role
Admin1@contoso.com	Security Administrator
Admin2@contoso.com	Cloud Device Administrator
User1@contoso.com	None

You have a computer named Computer1 that runs Windows 10. Computer1 is in a workgroup and has the local users shown in the following table.

Name	Member of
Administrator1	Network Configuration Operators
Administrator2	Power Users
UserA	Administrators

UserA joins Computer1 to Azure AD by using user1@contoso.com.

For each of the following statements, select Yes if the statement is true. Otherwise, select No. NOTE: Each correct selection is worth one point.

Answer Area

Statements	Yes	No
User1@contoso.com is a member of the local Administrators group on Computer1.	<input type="radio"/>	<input type="radio"/>
Admin1@contoso.com can configure the firewall and Microsoft Defender on Computer1.	<input type="radio"/>	<input type="radio"/>
Admin2@contoso.com can install software on Computer1.	<input type="radio"/>	<input type="radio"/>

- A. Mastered
B. Not Mastered

Answer: A

Explanation:

Answer Area

Statements	Yes	No
User1@contoso.com is a member of the local Administrators group on Computer1.	<input type="radio"/>	<input checked="" type="radio"/>
Admin1@contoso.com can configure the firewall and Microsoft Defender on Computer1.	<input type="radio"/>	<input checked="" type="radio"/>
Admin2@contoso.com can install software on Computer1.	<input type="radio"/>	<input checked="" type="radio"/>

NEW QUESTION 19

- (Exam Topic 3)

You have the device configuration profile shown in the following exhibit.

Kiosk

Windows 10 and later

✓ Basics

2 Configuration settings

③ Assignments

...

Configure your devices to run in kiosk mode. Before you select a kiosk mode, review your app assignments in the Mobile Apps blade. Apps that you want to run in kiosk mode should be assigned to a Windows device. [Learn more about Windows kiosk mode.](#)

Select a kiosk mode *

Single app, full-screen kiosk

User logon type *

Auto logon (Windows 10, version 1803+)

Application type *

Add Microsoft Edge browser

This kiosk profile requires Microsoft Edge version 87 and later with Windows 10 version 1909 and later. [Learn more about Microsoft Edge kiosk mode.](#)

Edge Kiosk URL *

https://contoso.com

Microsoft Edge kiosk mode type

Public Browsing (InPrivate)

Refresh browser after idle time

5

Specify Maintenance Window for App Restarts *

Require

Not configured

Maintenance Window Start Time

MM/DD/YYYY

h:mm:ss A

Maintenance Window Recurrence

Daily (recommended)

Use the drop-down menus to select the answer choice that completes each statement based on the information presented in the graphic. NOTE: Each correct selection is worth one point.

Answer Area

Users

can access any URL.

cannot view the address bar in Microsoft Edge.

can only access URLs that include contoso.com.

can only access URLs that start with https://contoso.com/ .

Windows 10 devices can have

a single Microsoft Edge instance that has a single tab.

a single Microsoft Edge instance that has multiple tabs.

multiple Microsoft Edge instances that have multiple tabs.

multiple Microsoft Edge instances that each has a single tab.

- A. Mastered
- B. Not Mastered

Answer: A

Explanation:

Users can only access URLs that start with https://contoso.com/ Windows 10 and later devices can have multiple Microsoft Edge instances that each has a single tab
he device configuration profile shown in the exhibit is a kiosk browser profile that configures Microsoft Edge to run in kiosk mode. The profile has the following settings:
> Kiosk mode: Enabled
> Kiosk type: Multi-app
> Allowed URLs: https://contoso.com/*
> Address bar: Disabled
These settings mean that users can only access URLs that start with https://contoso.com/ and cannot view the address bar in Microsoft Edge. The kiosk type of Multi-app allows users to open multiple instances of Microsoft Edge, but each instance can only have a single tab. Therefore, users cannot access any URL, cannot view the address bar in Microsoft Edge, and can have multiple Microsoft Edge instances that each has a single tab. References:
https://docs.microsoft.com/en-us/mem/intune/configuration/kiosk-settings#kiosk-browser-settings

NEW QUESTION 23

- (Exam Topic 3)
You have a Microsoft 365 subscription that includes Microsoft Intune.
You need to implement a Microsoft Defender for Endpoint solution that meets the following requirements:
• Enforces compliance for Defender for Endpoint by using Conditional Access

Passing Certification Exams Made Easy

visit - https://www.2PassEasy.com

• Prevents suspicious scripts from running on devices
What should you configure? To answer, drag the appropriate features to the correct requirements. Each feature may be used once, more than once, or not at all. You may need to drag the split bar between panes or scroll to view content.
NOTE: Each correct selection is worth one point.

Features	Answer Area
A device restriction policy	Enforces compliance: <input type="text"/>
A security baseline	Prevents suspicious scripts: <input type="text"/>
An attack surface reduction (ASR) rule	
An Intune connection	

- A. Mastered
- B. Not Mastered

Answer: A

Explanation:

To enforce compliance for Defender for Endpoint by using Conditional Access, you need to configure an Intune connection in the Defender for Endpoint portal. This allows you to use Intune device compliance policies to evaluate the health and compliance status of devices that are enrolled in Defender for Endpoint. You can then use Conditional Access policies to block or allow access to cloud apps based on the device compliance status. References: <https://docs.microsoft.com/en-us/windows/security/threat-protection/microsoft-defender-atp/conditional-access>
To prevent suspicious scripts from running on devices, you need to configure an attack surface reduction (ASR) rule in Intune. ASR rules are part of the endpoint protection settings that you can apply to devices by using device configuration profiles. You can use the ASR rule “Block Office applications from creating child processes” to prevent Office applications from launching child processes such as scripts or executables. References: <https://docs.microsoft.com/en-us/mem/intune/protect/endpoint-protection-windows-10#attack-surface-reduction>

NEW QUESTION 25

- (Exam Topic 3)
You have a Microsoft 365 subscription. The subscription contains computers that run Windows 11 and are enrolled in Microsoft Intune. You need to create a compliance policy that meets the following requirements:
• Requires BitLocker Drive Encryption (BitLocker) on each device
• Requires a minimum operating system version
Which setting of the compliance policy should you configure for each requirement? To answer, drag the appropriate settings to the correct requirements. Each setting may be used once, more than once, or not at all. You may need to drag the split bar between panes or scroll to view content.
NOTE: Each correct selection is worth one point,

Settings	Answer Area
Device Health	Requires BitLocker: <input type="text"/>
Device Properties	Requires a minimum operating system version: <input type="text"/>
Microsoft Defender for Endpoint	
System Security	

- A. Mastered
- B. Not Mastered

Answer: A

Explanation:

Settings	Answer Area
Device Health	Requires BitLocker: System Security
Device Properties	Requires a minimum operating system version: Device Properties
Microsoft Defender for Endpoint	
System Security	

NEW QUESTION 28

- (Exam Topic 3)
Your network contains an Active Directory domain. The domain contains a computer named Computer1 that runs Windows 8.1. Computer1 has apps that are compatible with Windows 10. You need to perform a Windows 10 in-place upgrade on Computer1. Solution: You copy the Windows 10 installation media to a network share. You start Computer1 from Windows PE (WinPE), and then you run setup.exe from the network share. Does this meet the goal?

- A. Yes
- B. No

Answer: B

NEW QUESTION 30

- (Exam Topic 3)

You have a Microsoft 365 E5 subscription that contains 500 macOS devices enrolled in Microsoft Intune. You need to ensure that you can apply Microsoft Defender for Endpoint antivirus policies to the macOS devices. The solution must minimize administrative effort. What should you do?

- A. From the Microsoft Endpoint Manager admin center, create a configuration profile.
- B. From the Microsoft Endpoint Manager admin center, create a security baseline.
- C. Onboard the macOS devices to the Microsoft 365 compliance center.
- D. Install Defender for Endpoint on the macOS devices.

Answer: D

Explanation:

Just install, and use Defender for Endpoint on Mac. Reference:

<https://docs.microsoft.com/en-us/microsoft-365/security/defender-endpoint/microsoft-defender-endpoint-mac>

NEW QUESTION 31

- (Exam Topic 3)

You have an Azure Active Directory Premium Plan 2 subscription that contains the users shown in the following table.

Name	Member of	Assigned license
User1	Group1	Enterprise Mobility + Security E5
User2	Group2	Enterprise Mobility + Security E5

You purchase the devices shown in the following table.

Name	Type
Device1	Windows 10
Device2	Android

You configure automatic mobile device management (MDM) and mobile application management (MAM) enrollment by using the following settings:

- > MDM user scope: Group1
- > MAM user scope: Group2

For each of the following statements, select Yes if the statement is true. Otherwise, select No.

NOTE: Each correct selection is worth one point.

Statements	Yes	No
User1 can enroll Device1 in Intune by using automatic enrollment.	<input type="radio"/>	<input type="radio"/>
User1 can enroll Device2 in Intune by using automatic enrollment.	<input type="radio"/>	<input type="radio"/>
User2 can enroll Device1 in Intune by using automatic enrollment.	<input type="radio"/>	<input type="radio"/>

- A. Mastered
- B. Not Mastered

Answer: A

Explanation:

Graphical user interface, text, application Description automatically generated

Reference: <https://docs.microsoft.com/en-us/mem/intune/enrollment/android-enroll> <https://powerautomate.microsoft.com/fr-fr/blog/mam-flow-mobile/>

NEW QUESTION 32

- (Exam Topic 3)

You have a Windows 11 capable device named Device1 that runs the 64-bit version of Windows 10 Enterprise and has Microsoft Office 2019 installed. You have the Windows 11 Enterprise images shown in the following table.

Name	Platform	Description
Image1	x64	Custom Windows 11 image that has Office 2021 installed
Image2	x64	Default Windows 11 image created by Microsoft

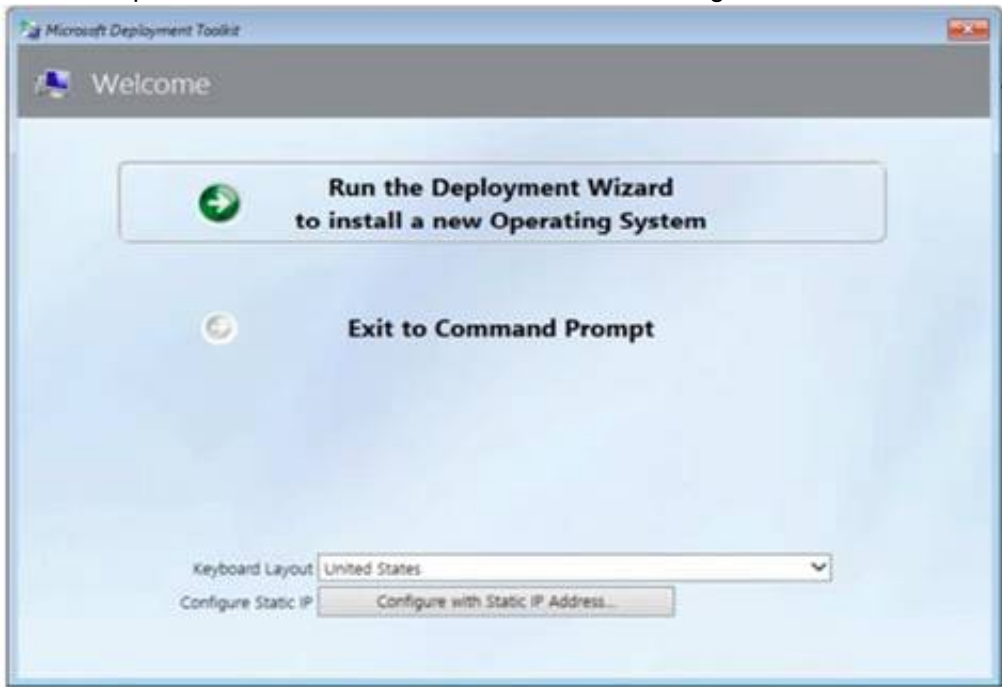
Which images can be used to perform an in-place upgrade of Device1?

- A. image1 only
- B. Image2only
- C. Image1 and Image2

Answer: B

NEW QUESTION 36

- (Exam Topic 3)
You have a Microsoft Deployment Toolkit (MDT) server named MDT1.
When computers start from the LiteTouchPE_x64.iso image and connect to MDT1. the welcome screen appears as shown In the following exhibit.



You need to prevent the welcome screen from appearing when the computers connect to MDT1.
Which three actions should you perform in sequence? To answer move the appropriate actions from the list of actions to the answer area and arrange them in the correct order.

Actions

Modify the CustomSettings.ini file.

Update the deployment share.

Modify the Bootstrap.ini file.

Replace the ISO image.

Modify the task sequence.

Answer Area

>

<

- A. Mastered
- B. Not Mastered

Answer: A

Explanation:

Box 1: Modify the Bootstrap.ini file.
Add this to your bootstrap.ini file and then update the deployment share and use the new boot media created in that process:
SkipBDDWelcome=YES
Box 2: Modify the CustomSettings.ini file. SkipBDDWelcome
Indicates whether the Welcome to Windows Deployment wizard page is skipped.
For this property to function properly it must be configured in both CustomSettings.ini and BootStrap.ini. BootStrap.ini is processed before a deployment share (which contains CustomSettings.ini) has been selected.
Box 3: Update the deployment share. Reference:
<https://docs.microsoft.com/en-us/mem/configmgr/mdt/toolkit-reference#table-6-deployment-wizard-pages>

NEW QUESTION 38

- (Exam Topic 3)
You have a Microsoft 365 subscription that contains the devices shown in the following table.

Name	Type
Device1	Windows 10
Device2	iOS
Device3	Android Enterprise

You need to ensure that only devices running trusted firmware or operating system build can access network resources.
Which compliance policy setting should you configure for each device? To answer, drag the appropriate settings to the correct devices. Each setting may be used once, more than once, or not at all. You may need to drag the split bar between panes or scroll to view content.
NOTE: Each correct selection is worth one point.

Settings

Require BitLocker.

Prevent jailbroken devices from having corporate access.

Prevent rooted devices from having corporate access.

Require Secure Boot to be enabled on the device.

Answer Area

Device1:

Device2:

Device3:

- A. Mastered
- B. Not Mastered

Answer: A

Explanation:

Settings

Require BitLocker.

Prevent jailbroken devices from having corporate access.

Prevent rooted devices from having corporate access.

Require Secure Boot to be enabled on the device.

Answer Area

Device1:

Require BitLocker.

Device2:

Prevent jailbroken devices from having corporate access.

Device3:

Prevent rooted devices from having corporate access.

NEW QUESTION 41

- (Exam Topic 3)
Your company uses Microsoft Intune to manage devices.
You need to ensure that only Android devices that use Android work profiles can enroll in intune. Which two configurations should you perform in the device enrollment restrictions? Each correct answer presents part of the solution.
NOTE Each correct selection is worth one point.

- A. From Platform Settings, set Android device administrator Personally Owned to Block.
- B. From Platform Settings, set Android Enterprise (work profile) to Allow.
- C. From Platform Settings, set Android device administrator Personally Owned to Allow
- D. From Platform Settings, set Android device administrator to Block.

Answer: AB

Explanation:
To ensure that only Android devices that use Android work profiles can enroll in Intune, you need to perform two configurations in the device enrollment restrictions. First, you need to set Android device administrator Personally Owned to Block. This prevents users from enrolling personal Android devices that use device administrator mode. Second, you need to set Android Enterprise (work profile) to Allow. This allows users to enroll corporate-owned or personal Android devices that use work profiles. References: <https://docs.microsoft.com/en-us/mem/intune/enrollment/enrollment-restrictions-set>

NEW QUESTION 43

- (Exam Topic 3)
You have a Microsoft 365 subscription that contains the devices shown in the following table.

Name	Type
Device1	Windows 10
Device2	iOS
Device3	Android Enterprise

You need to ensure that only devices running trusted firmware or operating system builds can access network resources.
Which compliance policy setting should you configure for each device? To answer, drag the appropriate settings to the correct devices. Each setting may be used once, more than once, or not at all. You may need to drag the split bar between panes or scroll to view content.
NOTE: Each correct selection is worth one point.

Settings

Require BitLocker.

Prevent jailbroken devices from having corporate access.

Prevent rooted devices from having corporate access.

Require Secure Boot to be enabled on the device.

Answer Area

Device1:

Setting

Device2:

Setting

Device3:

Setting

- A. Mastered
- B. Not Mastered

Answer: A

Explanation:
Box 1:
Device Compliance settings for Windows 10/11 in Intune
There are the different compliance settings you can configure on Windows devices in Intune. As part of your mobile device management (MDM) solution, use these settings to require BitLocker, set a minimum and maximum operating system, set a risk level using Microsoft Defender for Endpoint, and more.
Note: Windows Health Attestation Service evaluation rules Require BitLocker:
Windows BitLocker Drive Encryption encrypts all data stored on the Windows operating system volume. BitLocker uses the Trusted Platform Module (TPM) to help protect the Windows operating system and user data. It also helps confirm that a computer isn't tampered with, even if its left unattended, lost, or stolen. If the computer is equipped with a compatible TPM, BitLocker uses the TPM to lock the encryption keys that protect the data. As a result, the keys can't be accessed until the TPM verifies the state of the computer.
Not configured (default) - This setting isn't evaluated for compliance or non-compliance.
Require - The device can protect data that's stored on the drive from unauthorized access when the system is off, or hibernates.
Box 2: Prevent jailbroken devices from having corporate access Device Compliance settings for iOS/iPadOS in Intune
There are different compliance settings you can configure on iOS/iPadOS devices in Intune. As part of your mobile device management (MDM) solution, use these settings to require an email, mark rooted (jailbroken) devices as not compliant, set an allowed threat level, set passwords to expire, and more.

Device Health Jailbroken devices

Supported for iOS 8.0 and later

Not configured (default) - This setting isn't evaluated for compliance or non-compliance. Block - Mark rooted (jailbroken) devices as not compliant.

Box 3: Prevent rooted devices from having corporate access. Device compliance settings for Android Enterprise in Intune

There are different compliance settings you can configure on Android Enterprise devices in Intune. As part of your mobile device management (MDM) solution, use these settings to mark rooted devices as not compliant, set an allowed threat level, enable Google Play Protect, and more.

Device Health - for Personally-Owned Work Profile Rooted devices

Not configured (default) - This setting isn't evaluated for compliance or non-compliance. Block - Mark rooted devices as not compliant.

Reference: <https://docs.microsoft.com/en-us/mem/intune/protect/compliance-policy-create-windows> <https://docs.microsoft.com/en-us/mem/intune/protect/compliance-policy-create-android-for-work> <https://docs.microsoft.com/en-us/mem/intune/protect/compliance-policy-create-ios>

NEW QUESTION 45

- (Exam Topic 3)

You have 100 computers that run Windows 10. You have no servers. All the computers are joined to Microsoft Azure Active Directory (Azure AD).

The computers have different update settings, and some computers are configured for manual updates. You need to configure Windows Update. The solution must meet the following requirements:

- > The configuration must be managed from a central location.
- > Internet traffic must be minimized.
- > Costs must be minimized.

How should you configure Windows Update? To answer, select the appropriate options in the answer area.

NOTE: Each correct selection is worth one point.

Windows Update technology to use:

Windows Server Update Services (WSUS)
Microsoft Endpoint Configuration Manager
Windows Update for Business

Manage the configuration by using:

A Group Policy object (GPO)
Microsoft Endpoint Configuration Manager
Microsoft Intune

Manage the traffic by using:

Delivery Optimization
BranchCache
Peer cache

- A. Mastered
- B. Not Mastered

Answer: A

Explanation:

Box 1: Windows Server Update Services (WSUS)

Windows Server Update Services (WSUS) enables information technology administrators to deploy the latest Microsoft product updates. You can use WSUS to fully manage the distribution of updates that are released through Microsoft Update to computers on your network.

Windows Server Update Services is a built-in server role that includes the following enhancements: Can be added and removed by using the Server Manager Includes Windows PowerShell cmdlets to manage the most important administrative tasks in WSUS Etc.

Box 2: A Group Policy object

In an Active Directory environment, you can use Group Policy to define how computers and users can interact with Windows Update to obtain automatic updates from Windows Server Update Services (WSUS).

Box 3: BranchCache

BranchCache is a bandwidth-optimization feature that has been available since the Windows Server 2008 R2 and Windows 7 operating systems. Each client has a cache and acts as an alternate source for content that devices on its own network request. Windows Server Update Services (WSUS) and Microsoft Endpoint Manager can use BranchCache to optimize network bandwidth during update deployment, and it's easy to configure for either of them. BranchCache has two operating modes: Distributed Cache mode and Hosted Cache mode.

Reference: <https://docs.microsoft.com/en-us/windows/deployment/update/waas-branchcache> <https://docs.microsoft.com/en-us/windows-server/administration/windows-server-update-services/deploy/4-conf>

NEW QUESTION 47

- (Exam Topic 3)

You have an Azure AD group named Group1. Group1 contains two Windows 10 Enterprise devices named Device1 and Device2. You create a device configuration profile named Profile1. You assign Profile1 to Group1. You need to ensure that Profile1 applies to Device1 only. What should you modify in Profile1?

- A. Assignments
- B. Settings
- C. Scope (Tags)
- D. Applicability Rules

Answer: D

Explanation:

To ensure that Profile1 applies to Device1 only, you need to modify the Applicability Rules in Profile1. You can use applicability rules to filter which devices receive a profile based on criteria such as device model, manufacturer, or operating system version. You can create an applicability rule that matches Device1's properties and excludes Device2's properties. References:

<https://docs.microsoft.com/en-us/mem/intune/configuration/device-profile-assign#applicability-rules>

NEW QUESTION 50

- (Exam Topic 3)

Your company standardizes on Windows 10 Enterprise for all users.

Some users purchase their own computer from a retail store. The computers run Windows 10 Pro. You need to recommend a solution to upgrade the computers to Windows 10 Enterprise, join the computers to Azure AD, and install several Microsoft Store apps. The solution must meet the following requirements:

- Ensure that any applications installed by the users are retained.
- Minimize user intervention.

What is the best recommendation to achieve the goal? More than one answer choice may achieve the goal. Select the BEST answer.

- A. Windows Autopilot
- B. Microsoft Deployment Toolkit (MDT)
- C. a Windows Configuration Designer provisioning package
- D. Windows Deployment Services (WDS)

Answer: A

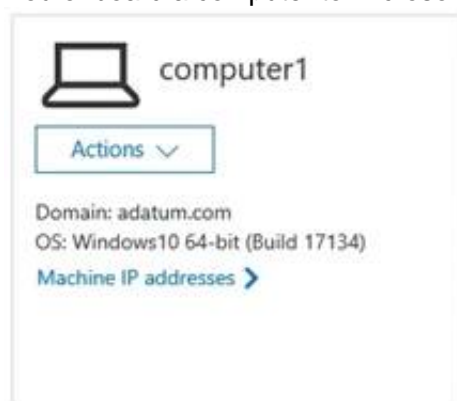
NEW QUESTION 54

- (Exam Topic 3)

Your company uses Microsoft Defender for Endpoint Microsoft Defender for Endpoint includes the device groups shown in the following table.

Rank	Name	Members
1	Group1	Tag Equals demo And OS In Windows 10
2	Group2	Tag Equals demo
3	Group3	Domain Equals adatum.com
4	Group4	Domain Equals adatum.com And OS In Windows 10
5	Group5	Name starts with COMP
Last	Ungrouped machines (default)	Not applicable

You onboard a computer to Microsoft Defender for Endpoint as shown in the following exhibit.



What is the effect of the Microsoft Defender for Endpoint configuration? To answer, select the appropriate options in the answer area.

NOTE: Each correct selection is worth one point.

Answer Area

Computer1 will be a member of:

▼

- Group3 only
- Group4 only
- Grou5 only
- Group3, Group4, and Group5 only

If you add the tag demo to Computer1, Computer1 will be a member of:

▼

- Group1 only
- Group2 only
- Group1 and Group2 only
- Group1, Group2, Group3, Group4, and Group5

- A. Mastered
- B. Not Mastered

Answer: A

Explanation:

Answer Area

Computer1 will be a member of:

▼

- Group3 only
- Group4 only
- Grou5 only
- Group3, Group4, and Group5 only

If you add the tag demo to Computer1, Computer1 will be a member of:

▼

- Group1 only
- Group2 only
- Group1 and Group2 only
- Group1, Group2, Group3, Group4, and Group5

NEW QUESTION 55

- (Exam Topic 3)

You have a Microsoft 365 E5 subscription that contains a user named User1. You need to perform the following tasks for User1:

- > Set the Usage location to Canada.
- > Configure the Phone and Email authentication contact info for self-service password reset (SSPR). Which two settings should you configure in the Azure Active Directory admin center? To answer, select the appropriate settings in the answer area.

NOTE: Each correct selection is worth one point.

Manage

	Profile
	Custom security attributes (Preview)
	Assigned roles
	Administrative units
	Groups
	Applications
	Licenses
	Devices
	Azure role assignments
	Authentication methods

- A. Mastered
- B. Not Mastered

Answer: A

Explanation:

Graphical user interface, application Description automatically generated

NEW QUESTION 60

.....

THANKS FOR TRYING THE DEMO OF OUR PRODUCT

Visit Our Site to Purchase the Full Set of Actual MD-102 Exam Questions With Answers.

We Also Provide Practice Exam Software That Simulates Real Exam Environment And Has Many Self-Assessment Features. Order the MD-102 Product From:

<https://www.2passeasy.com/dumps/MD-102/>

Money Back Guarantee

MD-102 Practice Exam Features:

- * MD-102 Questions and Answers Updated Frequently
- * MD-102 Practice Questions Verified by Expert Senior Certified Staff
- * MD-102 Most Realistic Questions that Guarantee you a Pass on Your FirstTry
- * MD-102 Practice Test Questions in Multiple Choice Formats and Updatesfor 1 Year