

# Cisco

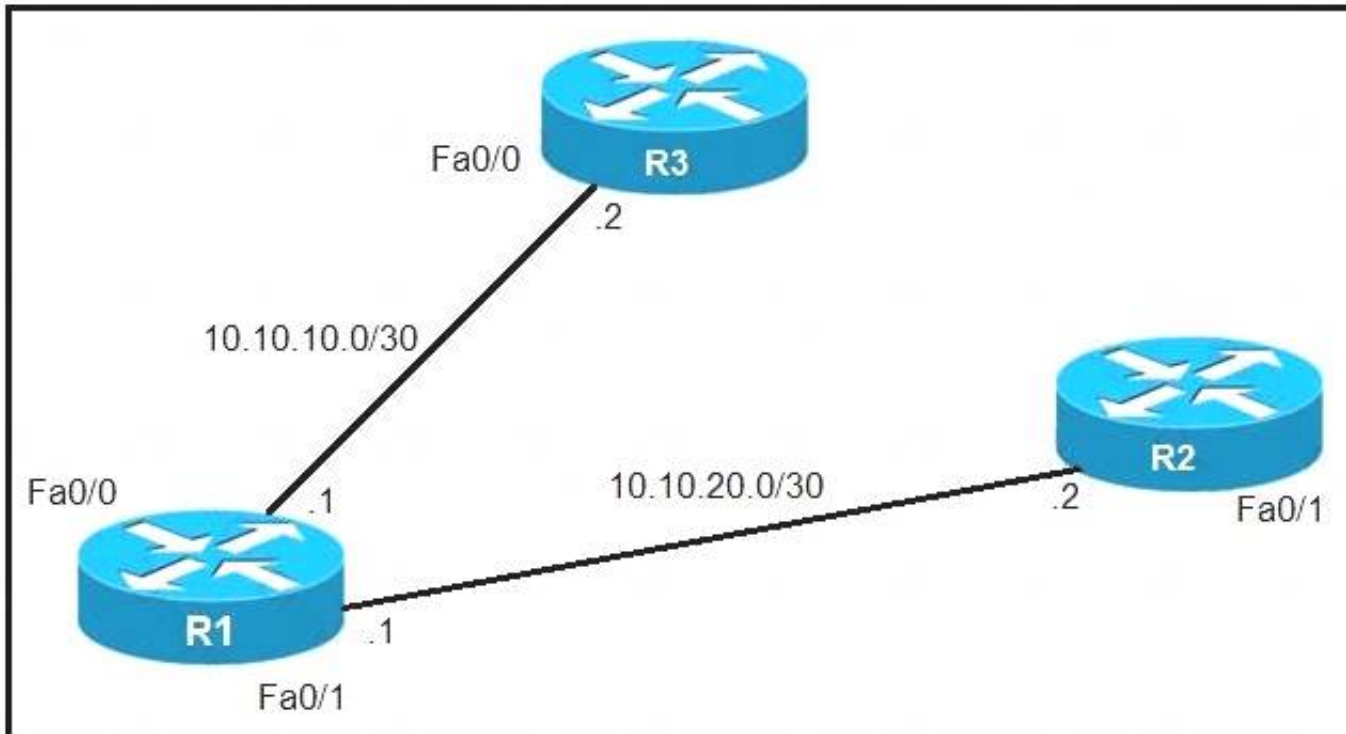
## Exam Questions 300-410

Implementing Cisco Enterprise Advanced Routing and Services (ENARSI)



### NEW QUESTION 1

Refer to the exhibit.



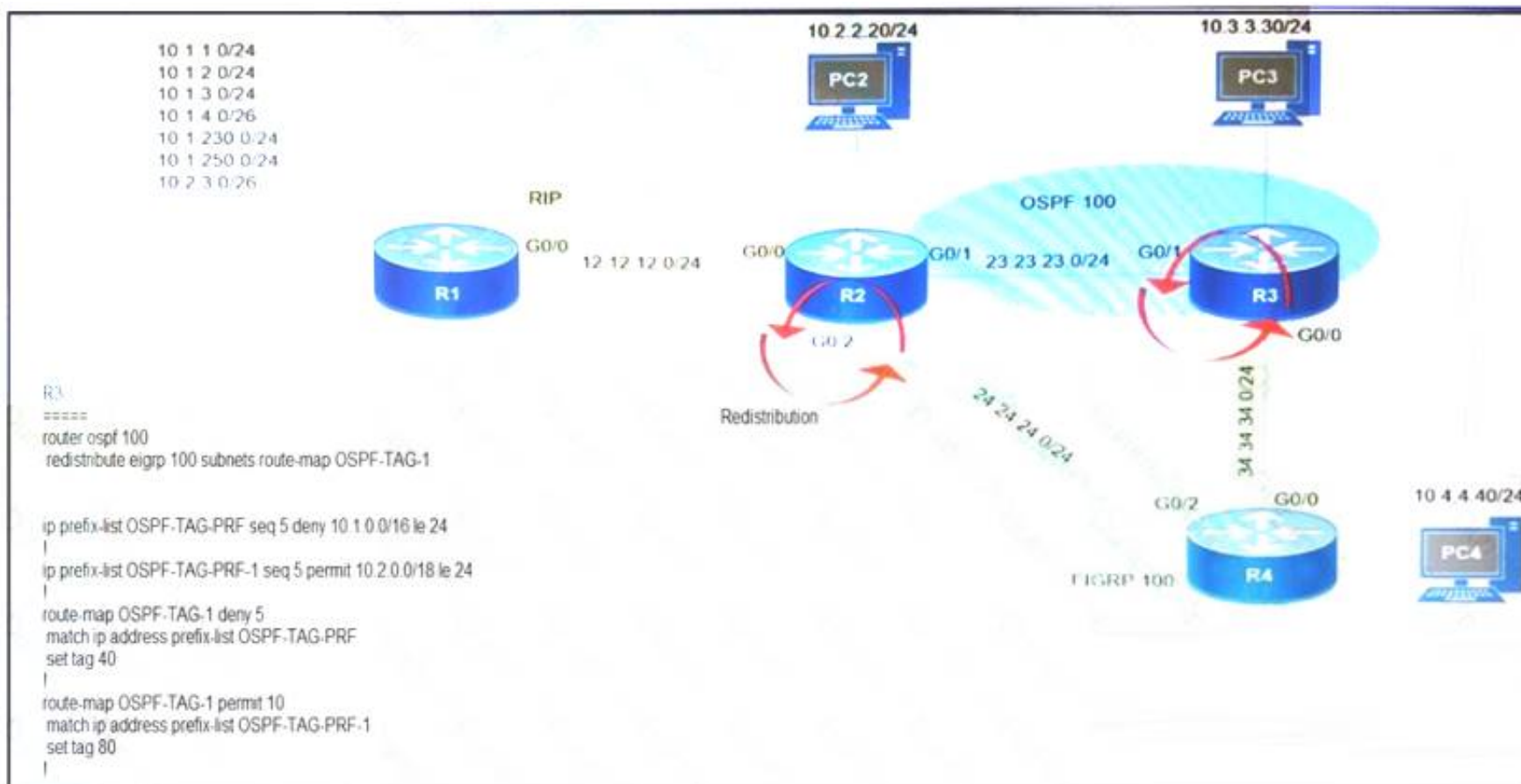
An IP SLA was configured on router R1 that allows the default route to be modified in the event that Fa0/0 loses reachability with the router R3 Fa0/0 interface. The route has changed to flow through router R2. Which debug command is used to troubleshoot this issue?

- A. debug ip flow
- B. debug ip sla error
- C. debug ip routing
- D. debug ip packet

**Answer: C**

### NEW QUESTION 2

Refer to the exhibit.



Which subnet is redistributed from EIGRP to OSPF routing protocols?

- A. 10.2.2.0/24
- B. 10.1.4.0/26
- C. 10.1.2.0/24
- D. 10.2.3.0/26

**Answer: A**

### NEW QUESTION 3

Which configuration enabled the VRF that is labeled "Inet" on FastEthernet0/0?

- A. R1(config)# ip vrf InetR1(config-vrf)#ip vrf FastEthernet0/0
- B. R1(config)#ip vrf Inet FastEthernet0/0
- C. R1(config)# ip vrf InetR1(config-vrf)#interface FastEthernet0/0 R1(config-if)#ip vrf forwarding Inet
- D. R1(config)#router ospf 1 vrf InetR1(config-router)#ip vrf forwarding FastEthernet0/0

**Answer: C**

#### NEW QUESTION 4

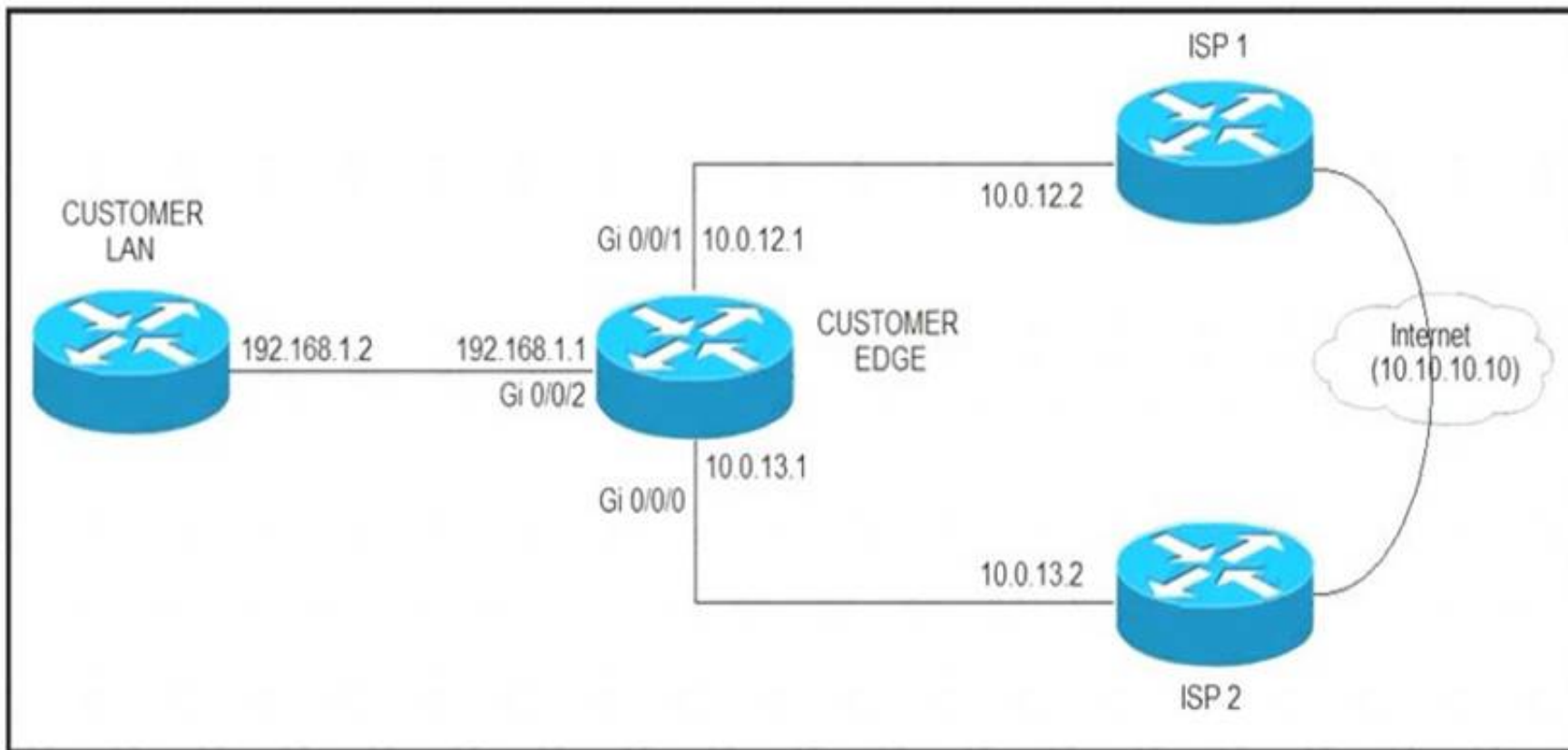
An engineer is trying to copy an IOS file from one router to another router by using TFTP. Which two actions are needed to allow the file to copy? (Choose two.)

- A. Copy the file to the destination router with the copy tftp: flash: command
- B. Enable the TFTP server on the source router with the tftp-server flash: <filename> command
- C. TFTP is not supported in recent IOS versions, so an alternative method must be used
- D. Configure a user on the source router with the username tftp password tftp command
- E. Configure the TFTP authentication on the source router with the tftp-server authentication local command

**Answer: AB**

#### NEW QUESTION 5

Refer to the exhibit.



ISP 1 and ISP 2 directly connect to the Internet. A customer is tracking both ISP links to achieve redundancy and cannot see the Cisco IOS IP SLA tracking output on the router console. Which command is missing from the IP SLA configuration?

- A. Start-time 00:00
- B. Start-time 0
- C. Start-time immediately
- D. Start-time now

**Answer: D**

#### NEW QUESTION 6

Which command displays the IP routing table information that is associated with VRF-Lite?

- A. show ip vrf
- B. show ip route vrf
- C. show run vrf
- D. show ip protocols vrf

**Answer: B**

#### NEW QUESTION 7

Refer to the exhibit.

```
R1(config) # do show running-config | section line|username
username cisco secret 5 $1$yb/o$L3G5cXODxpYMSJ70PzEyo0
line con 0
  logging synchronous
line vty 0 4
  login local
  transport input telnet
R1(config) # logging console 7
R1(config) # do debug aaa authentication
R1(config) #
```

An administrator that is connected to the console does not see debug messages when

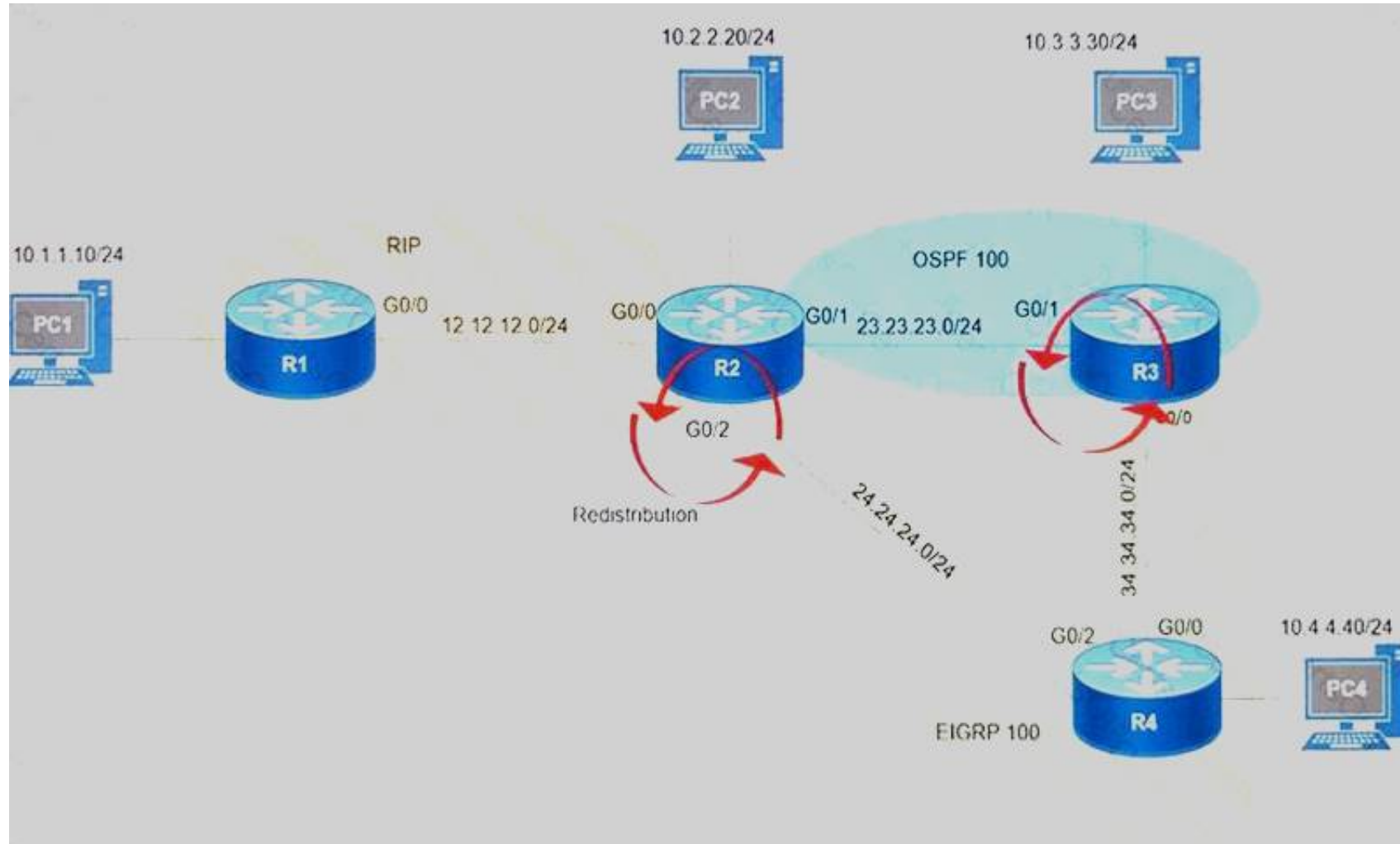
remote users log in. Which action ensures that debug messages are displayed for remote logins?

- A. Enter the transport input ssh configuration command.
- B. Enter the terminal monitor exec command.
- C. Enter the logging console debugging configuration command.
- D. Enter the aaa new-model configuration command.

**Answer: B**

#### NEW QUESTION 8

Refer to the exhibit.



After redistribution is enabled between the routing protocols; PC2, PC3, and PC4 cannot reach PC1. Which action can the engineer take to solve the issue so that all the PCs are reachable?

- A. Set the administrative distance 100 under the RIP process on R2.
- B. Filter the prefix 10.1.1.0/24 when redistributed from OSPF to EIGRP.
- C. Filter the prefix 10.1.1.0/24 when redistributed from RIP to EIGRP.
- D. Redistribute the directly connected interfaces on R2.

**Answer: B**

#### NEW QUESTION 9

Refer to the exhibit.

```
R1#show policy-map control-plane
Control Plane
  Service-policy input: CoPP-BGP
  Class-map: BGP (match all)
    2716 packets, 172071 bytes
    5 minute offered rate 0000 bps, drop rate 0000 bps
    Match: access-group name BGP
    drop

  Class-map: class-default (match-any)
    5212 packets, 655966 bytes
    5 minute offered rate 0000 bps, drop rate 0000 bps
    Match: any
```

What is the result of applying this configuration?

- A. The router can form BGP neighborships with any other device.
- B. The router cannot form BGP neighborships with any other device.
- C. The router cannot form BGP neighborships with any device that is matched by the access list named "BGP".
- D. The router can form BGP neighborships with any device that is matched by the access list named "BGP".

**Answer: D**



NEW QUESTION 10

Drag and drop the MPLS terms from the left onto the correct definitions on the right.

PE	device that forwards traffic based on labels
P	path that the labeled packet takes
CE	device that is unaware of MPLS labeling
LSP	device that removes and adds the MPLS labeling

- A. Mastered
- B. Not Mastered

Answer: A

Explanation:

PE	P
P	LSP
CE	CE
LSP	PE

NEW QUESTION 10

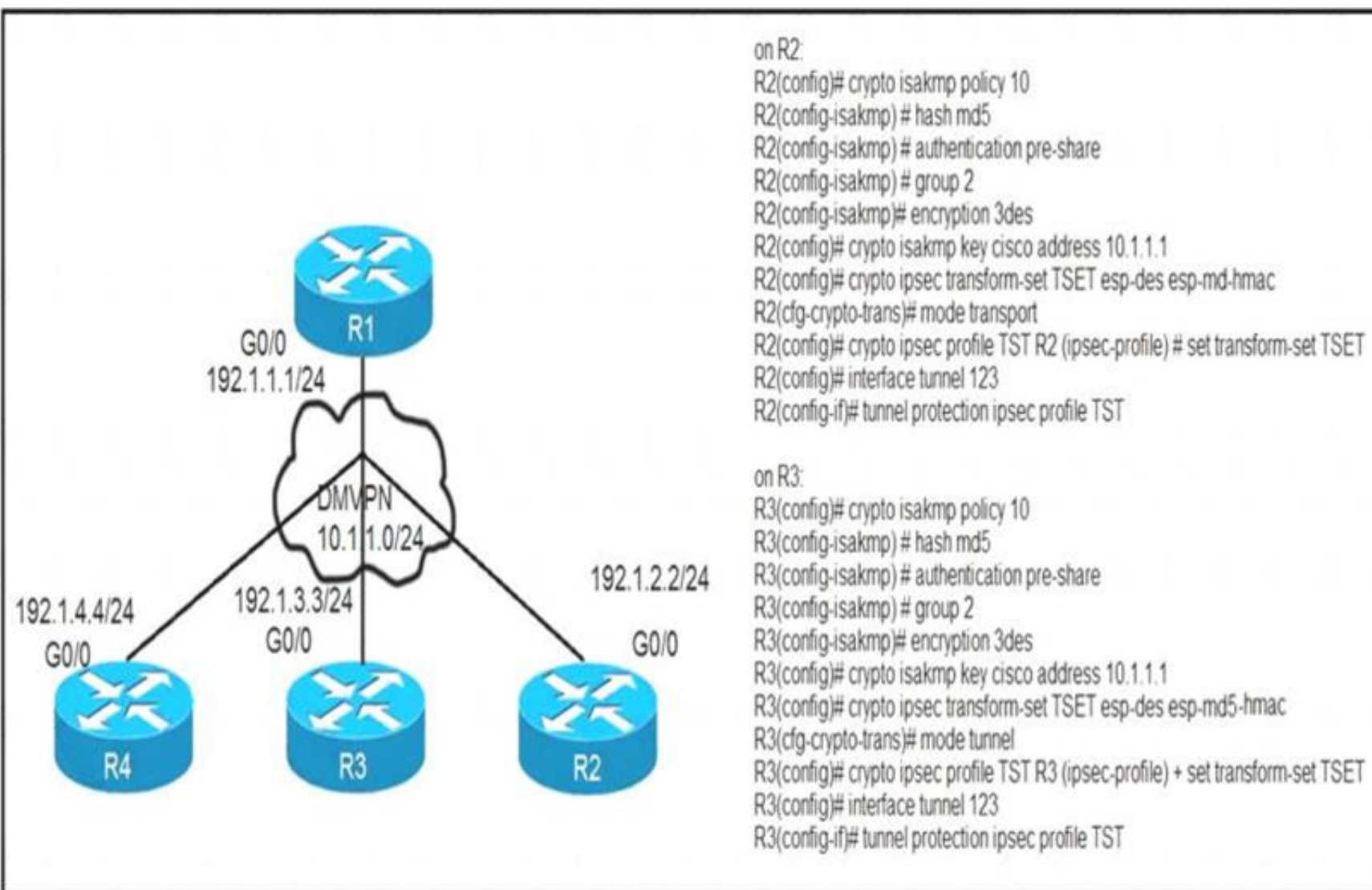
What is a prerequisite for configuring BFD?

- A. Jumbo frame support must be configured on the router that is using BFD.
- B. All routers in the path between two BFD endpoints must have BFD enabled.
- C. Cisco Express Forwarding must be enabled on all participating BFD endpoints.
- D. To use BFD with BGP, the timers 3 9 command must first be configured in the BGP routing process.

Answer: C

NEW QUESTION 14

Refer to the exhibit.



After applying IPsec, the engineer observed that the DMVPN tunnel went down, and both spoke-to-spoke and hub were not establishing. Which two actions resolve the issue? (Choose two.)

- A. Change the mode from mode tunnel to mode transport on R3.
- B. Remove the crypto isakmp key cisco address 10.1.1.1 on R2 and R3.
- C. Configure the crypto isakmp key cisco address 192.1.1.1 on R2 and R3.
- D. Configure the crypto isakmp key cisco address 0.0.0.0 on R2 and R3.
- E. Change the mode from mode transport to mode tunnel on R2.

**Answer:** AD

#### NEW QUESTION 16

Refer to the exhibit.

```
R1#show ip ssh
SSH Disabled – version 1.99
%Please create RSA keys to enable SSH (and of atleast 768 bits for SSH v2).
Authentication timeout: 120 secs; Authentication retries: 3
Minimum expected Diffie Hellman key size: 1024 bits
IOS Keys in SECSH format (ssh-rsa, base64 encoded) : NONE
R1#
```

An engineer is trying to connect to a device with SSH but cannot connect. The engineer connects by using the console and finds the displayed output when troubleshooting. Which command must be used in configuration mode to enable SSH on the device?

- A. no ip ssh disable
- B. ip ssh enable
- C. ip ssh version 2
- D. crypto key generate rsa

**Answer:** D

#### NEW QUESTION 21

Which statement about route distinguishers in an MPLS network is true?

- A. Route distinguishers allow multiple instances of a routing table to coexist within the edge router.
- B. Route distinguishers are used for label bindings.
- C. Route distinguishers make a unique VPNv4 address across the MPLS network.
- D. Route distinguishers define which prefixes are imported and exported on the edge router.

**Answer:** C

#### NEW QUESTION 22

While troubleshooting connectivity issues to a router, these details are noticed:

- Standard pings to all router interfaces, including loopbacks, are successful.
- Data traffic is unaffected.
- SNMP connectivity is intermittent.
- SSH is either slow or disconnects frequently.

Which command must be configured first to troubleshoot this issue?

- A. show policy-map control-plane
- B. show policy-map
- C. show interface | inc drop
- D. show ip route

**Answer:** A

#### NEW QUESTION 26

Refer to the exhibit.

```
R1#show running-config | include aaa
aaa new-model
aaa authentication login default group tacacs+ local
aaa authentication login Console local
R1#show running-config | section line
line con 0
  logging synchronous
R1#
```

An engineer is trying to configure local authentication on the console line, but the device is trying to authenticate using TACACS+. Which action produces the desired configuration?

- A. Add the aaa authentication login default none command to the global configuration.
- B. Replace the capital "C" with a lowercase "c" in the aaa authentication login Console local command.
- C. Add the aaa authentication login default group tacacs+ local-case command to the global configuration.
- D. Add the login authentication Console command to the line configuration

**Answer:** D

#### NEW QUESTION 30

Refer to the exhibit.

```
snmp-server community ciscotest1
snmp-server host 192.168.1.128 ciscotest
snmp-sever enable traps bgp
```

Network operations cannot read or write any configuration on the device with this configuration from the operations subnet. Which two configurations fix the issue? (Choose two.)

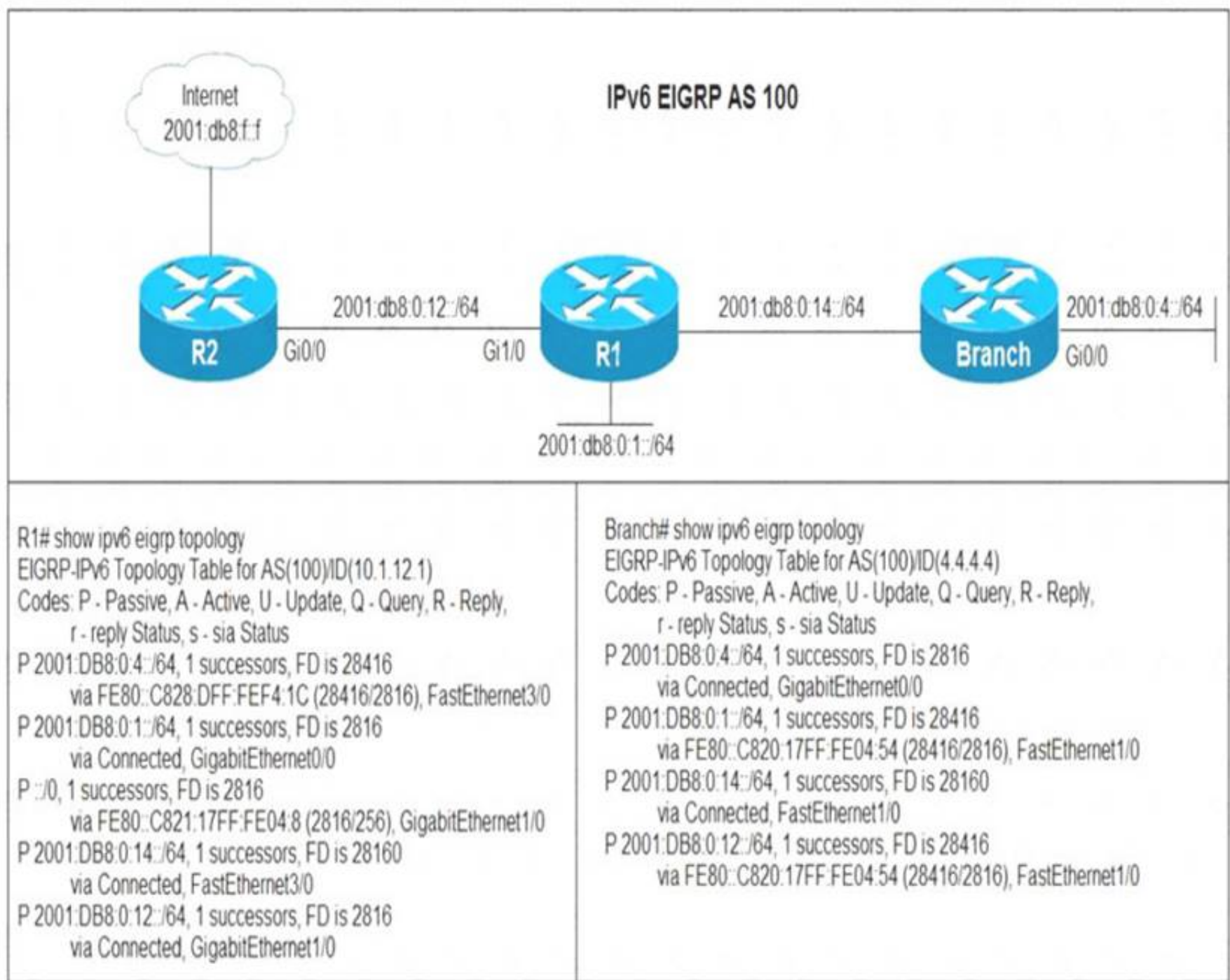
- A. Configure SNMP rw permission in addition to community ciscotest.
- B. Modify access list 1 and allow operations subnet in the access list.
- C. Modify access list 1 and allow SNMP in the access list.
- D. Configure SNMP rw permission in addition to version 1.
- E. Configure SNMP rw permission in addition to community ciscotest 1.

**Answer:** AB

#### NEW QUESTION 33

Refer to the exhibit.





Users in the branch network of 2001:db8:0:4::/64 report that they cannot access the Internet. Which command is issued in IPv6 router EIGRP 100 configuration mode to solve this issue?

- A. Issue the eigrp stub command on R1.
- B. Issue the no eigrp stub command on R1.
- C. Issue the eigrp stub command on R2.
- D. Issue the no eigrp stub command on R2.

**Answer: A**

**NEW QUESTION 35**

Drag and drop the packet types from the left onto the correct descriptions on the right.

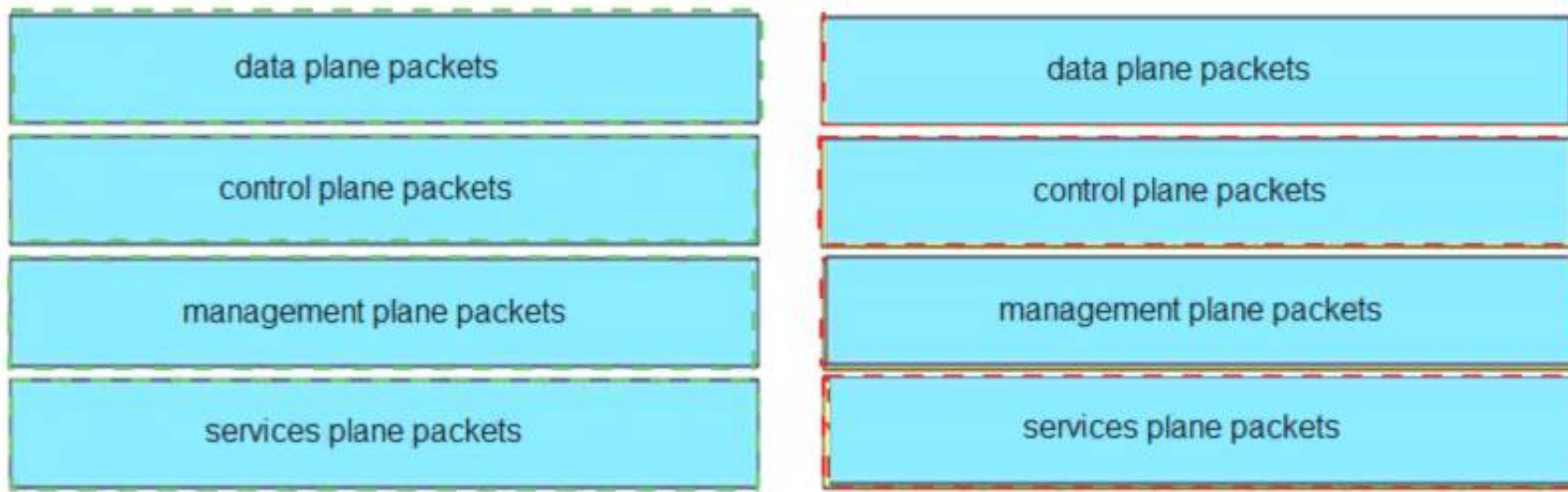
data plane packets	user-generated packets that are always forwarded by network devices to other end-station devices
control plane packets	network device generated or received packets that are used for the creation of the network itself
management plane packets	network device generated or received packets; packets that are used to operate the network
services plane packets	user-generated packets that are forwarded by network devices to other end-station devices, but that require higher priority than the normal traffic by the network devices

- A. Mastered
- B. Not Mastered

**Answer: A**

**Explanation:**





**NEW QUESTION 39**

Refer to the exhibit.

```
Router#show running-config | include ip route
ip route 192.168.2.2 255.255.255.255 209.165.200.225 130
Router#show ip route

<output omitted>

Gateway of last resort is not set

    192.168.1.0/32 is subnetted, 1 subnets
C       192.168.1.1 is directly connected, Loopback0
    192.168.2.0/32 is subnetted, 1 subnets
O       192.168.2.2[110/11] via 192.168.12.2, 00:52:09, Ethernet0/0
    192.168.12.0/24 is variably subnetted, 2 subnets, 2 masks
C       192.168.12.0/24 is directly connected, Ethernet0/0
L       192.168.12.1/32 is directly connected, Ethernet0/0
    209.165.200.0/24 is variably subnetted, 2 subnets, 2 masks
C       209.165.200.0/24 is directly connected, Ethernet0/1
        209.165.200.226/32 is directly connected, Ethernet0/1
```

An engineer configures a static route on a router, but when the engineer checks the route to the destination, a different next hop is chosen. What is the reason for this?

- A. Dynamic routing protocols always have priority over static routes.
- B. The metric of the OSPF route is lower than the metric of the static route.
- C. The configured AD for the static route is higher than the AD of OSPF.
- D. The syntax of the static route is not valid, so the route is not considered.

**Answer: C**

**NEW QUESTION 41**

Refer to the exhibit.

```
R200#show ip bgp summary
BGP router identifier 10.1.1.1, local AS number 65000
BGP table version is 26, main routing table version 26
1 network entries using 132 bytes of memory
1 path entries using 52 bytes of memory
2/1 BGP path/bestpath attribute entries using 296 bytes of memory
0 BGP route-map cache entries using 0 bytes of memory
0 BGP filter-list cache entries using 0 bytes of memory
Bitfield cache entries: current 1 (at peak 2) using 28 bytes of memory
BGP using 508 total bytes of memory
BGP activity 24/23 prefixes, 24/23 paths, scan interval 60 secs
Neighbor      V    AS MsgRcvd MsgSent   TblVer  InQ  OutQ  Up/Down  State/PfxRcd
192.0.2.2      4 65100  20335    20329     0   0    0 00:02:04  Idle (PfxCt)
R200#
```

In which circumstance does the BGP neighbor remain in the idle condition?

- A. if prefixes are not received from the BGP peer
- B. if prefixes reach the maximum limit
- C. if a prefix list is applied on the inbound direction
- D. if prefixes exceed the maximum limit

**Answer:** D

#### NEW QUESTION 45

Which statement about MPLS LDP router ID is true?

- A. If not configured, the operational physical interface is chosen as the router ID even if a loopback is configured.
- B. The loopback with the highest IP address is selected as the router ID.
- C. The MPLS LDP router ID must match the IGP router ID.
- D. The force keyword changes the router ID to the specified address without causing any impact.

**Answer:** B

#### NEW QUESTION 46

Refer to the exhibit.

```
TAC+: TCP/IP open to 171.68.118.101/49 failed --  
Destination unreachable; gateway or host down  
AAA/AUTHEN (2546660185): status = ERROR  
AAA/AUTHEN/START (2546660185): Method=LOCAL  
AAA/AUTHEN (2546660185): status = FAIL  
As1 CHAP: Unable to validate Response. Username chapuser: Authentication failure
```

Why is user authentication being rejected?

- A. The TACACS+ server expects "user", but the NT client sends "domain/user".
- B. The TACACS+ server refuses the user because the user is set up for CHAP.
- C. The TACACS+ server is down, and the user is in the local database.
- D. The TACACS+ server is down, and the user is not in the local database.

**Answer:** D

#### NEW QUESTION 48

Refer to the exhibit.

```
R1 #show ip bgp summary
BGP router identifier 192.168.1.1, local AS number 65000
<output omitted>
Neighbor    V  AS   MsgRcvd  MsgSent   Tblver  InQ  OutQ  Up/Down  State/PfxRcd
192.168.2.2  4 65000    28     28       22    0    0   00:21:31        0
R1#show ip bgp
BGP table version is 22, local router ID is 192.168.1.1
Status codes: s suppressed, d damped, h history, * valid, > best, i – internal,
               r RIB-failure, s stale, m multipath, b backup-path, f RT-Filter,
               x best-external, a additional-path, C RIB-compressed,
Origin codes: i – IGP, e – EGP, ? – incomplete
RPKI validation codes: V valid, I invalid, N Not found

      Network        Next Hop           Metric LocPrf   Weight    Path
*>  172.16.25.0/24    209.165.200.225      0         32768      ?
R1#
```

```
R2 #show ip bgp summary
BGP router identifier 192.168.2.2, local AS number 65000
<output omitted>
Neighbor    V  AS   MsgRcvd  MsgSent   Tblver  InQ  OutQ  Up/Down  State/PfxRcd
192.168.1.1  4 65000    29     28       3     0    0   00:22:07        1
192.168.3.3  4 65000     7      8       3     0    0   00:02:55        0
R2#show ip bgp
BGP table version is 3, local router ID is 192.168.2.2
Status codes: s suppressed, d damped, h history, * valid, > best, i – internal,
               r RIB-failure, s stale, m multipath, b backup-path, f RT-Filter,
               x best-external, a additional-path, C RIB-compressed,
Origin codes: i – IGP, e – EGP, ? – incomplete
RPKI validation codes: V valid, I invalid, N Not found

      Network        Next Hop           Metric LocPrf   Weight    Path
*i  172.16.25.0/24    209.165.200.225      0        100      0        ?
R2#
```

```
R3 #show ip bgp summary
BGP router identifier 192.168.3.3, local AS number 65000
BGP table version is 4, main routing table version 4
Neighbor    V  AS   MsgRcvd  MsgSent   Tblver  InQ  OutQ  Up/Down  State/PfxRcd
192.168.2.2  4 65000     8      7       4     0    0   00:03:08        0
R3#
```

R2 is a route reflector, and R1 and R3 are route reflector clients. The route reflector learns the route to 172.16.25.0/24 from R1, but it does not advertise to R3. What is the reason the route is not advertised?

- A. R2 does not have a route to the next hop, so R2 does not advertise the prefix to other clients.
- B. Route reflector setup requires full IBGP mesh between the routers.
- C. In route reflector setup, only classful prefixes are advertised to other clients.
- D. In route reflector setups, prefixes are not advertised from one client to another.

**Answer:** A

#### NEW QUESTION 51

Which statement about IPv6 ND inspection is true?

- A. It learns and secures bindings for stateless autoconfiguration addresses in Layer 3 neighbor tables.
- B. It learns and secures bindings for stateless autoconfiguration addresses in Layer 2 neighbor tables.
- C. It learns and secures bindings for stateful autoconfiguration addresses in Layer 3 neighbor tables.
- D. It learns and secures bindings for stateful autoconfiguration addresses in Layer 2 neighbor tables.

**Answer:** B

#### NEW QUESTION 54

.....



## Thank You for Trying Our Product

### We offer two products:

1st - We have Practice Tests Software with Actual Exam Questions

2nd - Questions and Answers in PDF Format

### 300-410 Practice Exam Features:

- \* 300-410 Questions and Answers Updated Frequently
- \* 300-410 Practice Questions Verified by Expert Senior Certified Staff
- \* 300-410 Most Realistic Questions that Guarantee you a Pass on Your First Try
- \* 300-410 Practice Test Questions in Multiple Choice Formats and Updates for 1 Year

**100% Actual & Verified — Instant Download, Please Click**  
**[Order The 300-410 Practice Test Here](#)**