



Microsoft

Exam Questions AZ-800

Administering Windows Server Hybrid Core Infrastructure

NEW QUESTION 1

SIMULATION - (Topic 4)

Task 9

You plan to create group managed service accounts (gMSAs).

You need to configure the domain to support the creation of gMSAs.

- A. Mastered
- B. Not Mastered

Answer: A

Explanation:

To configure the domain to support the creation of gMSAs, you need to perform the following steps:

? On a domain controller or a computer that has the Remote Server Administration

Tools (RSAT) installed, open PowerShell as an administrator and run the following command to install the Active Directory module:

Install-WindowsFeature -Name RSAT-AD-PowerShell

? Run the following command to create a Key Distribution Service (KDS) root key, which is required for generating passwords for gMSAs. You only need to do this once per domain:

Add-KdsRootKey -EffectiveImmediately

? Wait for at least 10 hours for the KDS root key to replicate to all domain controllers in the domain. Alternatively, you can use the -EffectiveTime parameter to specify a past date and time for the KDS root key, but this is not recommended for security reasons. For more information, see Add-KdsRootKey.

? After the KDS root key is replicated, you can create and configure gMSAs using

the New-ADServiceAccount and Set-ADServiceAccount cmdlets. For more information, see Create a gMSA and Configure a gMSA.

NEW QUESTION 2

SIMULATION - (Topic 4)

Task 7

You need to monitor the security configuration of DC1 by using Microsoft Defender for Cloud.

The required source files are located in a folder named \\dc1.contoso.com\install.

- A. Mastered
- B. Not Mastered

Answer: A

Explanation:

One possible solution to monitor the security configuration of DC1 by using Microsoft Defender for Cloud is to use the Guest Configuration feature. Guest Configuration is a service that audits settings inside Linux and Windows virtual machines (VMs) to assess their compliance with your organization's security policies. You can use Guest Configuration to monitor the security baseline settings for Windows Server in the Microsoft Defender for Cloud portal by following these steps:

? On DC1, open a web browser and go to the folder named \\dc1.contoso.com\install.

Download the Guest Configuration extension file (GuestConfiguration.msi) and save it to a local folder, such as C:\Temp.

? Run the Guest Configuration extension file and follow the installation wizard. You can choose to install the extension for all users or only for the current user. For more information on how to install the Guest Configuration extension, see Install the Guest Configuration extension.

? After the installation is complete, sign in to the Microsoft Defender for Cloud portal (2).

? In the left pane, select Security Center and then Recommendations.

? In the recommendations list, find and select Vulnerabilities in security configuration on your Windows machines should be remediated (powered by Guest Configuration).

? In the Remediate Security Configurations page, you can see the compliance status of your Windows VMs, including DC1, based on the Azure Compute Benchmark.

The Azure Compute Benchmark is a set of rules that define the desired configuration state of your VMs. You can also see the number of failed, passed, and skipped rules for each VM. For more information on the Azure Compute Benchmark, see Microsoft cloud security benchmark: Azure compute benchmark is now available.

? To view the details of the security configuration of DC1, click on the VM name and then select View details. You can see the list of rules that apply to DC1 and their compliance status. You can also see the severity, description, and remediation steps for each rule. For example, you can see if DC1 has the latest security updates installed, if the firewall is enabled, if the password policy is enforced, and so on.

? To monitor the security configuration of DC1 over time, you can use the Compliance over time chart, which shows the trend of compliance status for DC1 in the past 30 days. You can also use the Compliance breakdown chart, which shows the distribution of compliance status for DC1 by rule severity.

By using Guest Configuration, you can monitor the security configuration of DC1 by using Microsoft Defender for Cloud and ensure that it meets your organization's security standards. You can also use Guest Configuration to monitor the security configuration of other Windows and Linux VMs in your Azure environment.

NEW QUESTION 3

SIMULATION - (Topic 4)

Task 1

You need to prevent domain users from saving executable files in a share named

\\SRV\Data. The users must be able to save other files to the share.

- A. Mastered
- B. Not Mastered

Answer: A

Explanation:

One possible solution to prevent domain users from saving executable files in a share named \\SRV\Data is to use file screening on the file server. File screening allows you to block certain files from being saved based on their file name extension. Here are the steps to configure file screening:

? On the file server, open File Server Resource Manager from the Administrative Tools menu.

? In the left pane, expand File Screening Management and click on File Groups.

? Right-click on File Groups and select Create File Group.

? In the File Group Properties dialog box, enter a name for the file group, such as Executable Files.
? In the Files to include box, enter the file name extensions that you want to block, such as .exe, .bat, .cmd, .com, .msi, .scr. You can use wildcards to specify multiple extensions, such as *.exe.
? Click OK to create the file group.
? In the left pane, click on File Screen Templates.
? Right-click on File Screen Templates and select Create File Screen Template.
such as Block Executable Files.
? In the File Screen Template Properties dialog box, enter a name for the template.
? On the Settings tab, select the option Active screening. Do not allow users to save unauthorized files.
? On the File Groups tab, check the box next to the file group that you created, such as Executable Files.
? On the Notification tab, you can configure how to notify users and administrators when a file screening event occurs, such as sending an email, logging an event, or running a command or script. You can also customize the message that users see when they try to save a blocked file.
? Click OK to create the file screen template.
? In the left pane, click on File Screens.
? Right-click on File Screens and select Create File Screen.
? In the Create File Screen dialog box, enter the path of the folder that you want to apply the file screening to, such as \SRV\Data.
? Select the option Derive properties from this file screen template (recommended) and choose the template that you created, such as Block Executable Files.
? Click Create to create the file screen.
Now, domain users will not be able to save executable files in the share named \SRV\Data. They will be able to save other files to the share.

NEW QUESTION 4

SIMULATION - (Topic 4)

Task 8

You need to create an Active Directory Domain Services (AD DS) site named Site2 that is associated to an IP address range of 192.168.2.0 to 192.168.2.255.

- A. Mastered
- B. Not Mastered

Answer: A

Explanation:

To create an AD DS site named Site2 that is associated to an IP address range of 192.168.2.0 to 192.168.2.255, you can follow these steps:

? On a domain controller or a computer that has the Remote Server Administration

Tools (RSAT) installed, open Active Directory Sites and Services from the Administrative Tools menu or by typing dssite.msc in the Run box.

? In the left pane, right-click on Sites and select New Site.

? In the New Object - Site dialog box, enter Site2 as the Name of the new site.

Select a site link to associate the new site with, such as DEFAULTIPSITELINK, and click OK. You can also create a new site link if you want to customize the replication frequency and schedule between the sites. For more information on how to create a site link, see Create a Site Link.

? In the left pane, right-click on Subnets and select New Subnet.

? In the New Object - Subnet dialog box, enter 192.168.2.0/24 as the Prefix of the subnet. This notation represents the IP address range of 192.168.2.0 to 192.168.2.255 with a subnet mask of 255.255.255.0. Select Site2 as the Site object to associate the subnet with, and click OK.

? Wait for the changes to replicate to other domain controllers. You can verify the

site and subnet creation by checking the Sites and Subnets containers in Active Directory Sites and Services.

Now, you have created an AD DS site named Site2 that is associated to an IP address range of 192.168.2.0 to 192.168.2.255. You can add domain controllers to the new site and configure the site links and site link bridges to optimize the replication topology.

NEW QUESTION 5

SIMULATION - (Topic 4)

Task 3

You need to configure SRV1 as a DNS server. SRV1 must be able resolve names from the contoso.com domain by using DC1. All other names must be resolved by using the root hint servers.

- A. Mastered
- B. Not Mastered

Answer: A

Explanation:

One possible solution to configure SRV1 as a DNS server that can resolve names from the contoso.com domain by using DC1 and all other names by using the root hint servers is to use conditional forwarding. Conditional forwarding allows a DNS server to forward queries for a specific domain name to another DNS server, while using the normal forwarding or root hint servers for other queries. Here are the steps to configure conditional forwarding on SRV1:

? On SRV1, open DNS Manager from the Administrative Tools menu or by typing dnsmgmt.msc in the Run box.

? In the left pane, right-click on Conditional Forwarders and select New Conditional Forwarder.

? In the New Conditional Forwarder dialog box, enter contoso.com as the DNS Domain name.

? In the IP addresses of the master servers box, enter the IP address of DC1, which is the DNS server for the contoso.com domain. You can also click on Resolve to verify the name resolution of DC1.

? Optionally, you can check the box Store this conditional forwarder in Active Directory, and replicate it as follows if you want to store and replicate the conditional forwarder in AD DS. You can also select the replication scope from the drop-down list.

? Click OK to create the conditional forwarder.

Now, SRV1 will forward any queries for the contoso.com domain to DC1, and use the root hint servers for any other queries. You can test the name resolution by using

the nslookup command on SRV1 or another computer that uses SRV1 as its DNS server. For example, you can run the following commands:

nslookup www.contoso.com nslookup www.microsoft.com

The first command should return the IP address of www.contoso.com from DC1, and the second command should return the IP address of www.microsoft.com from a root hint server.

NEW QUESTION 6

SIMULATION - (Topic 4)

Task 6

You need to ensure that you can manage DC1 by using Windows Admin Center on SRV1. The required source files are located in a folder named \\dc1.contoso.com\install.

- A. Mastered
- B. Not Mastered

Answer: A

Explanation:

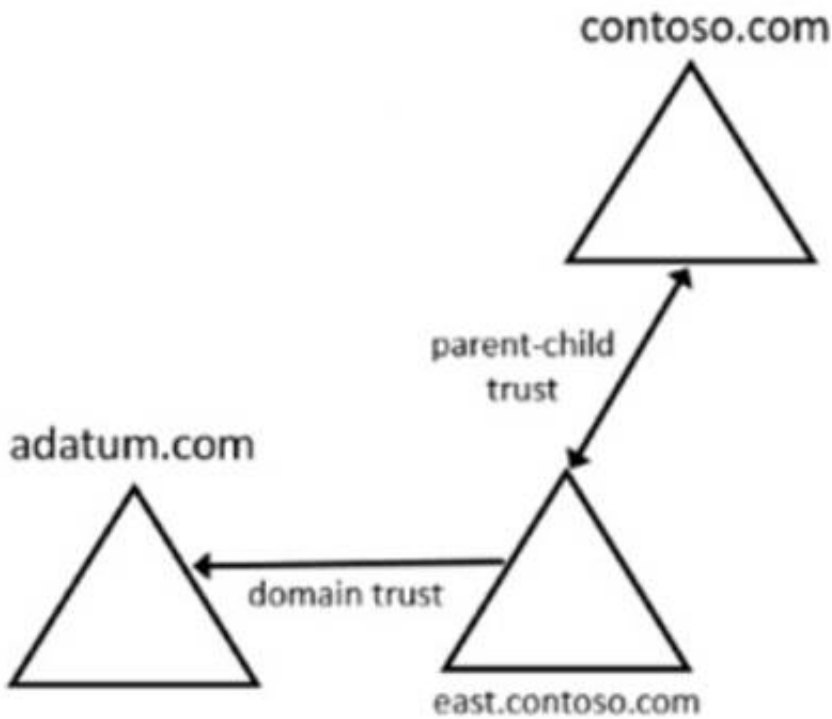
One possible solution to ensure that you can manage DC1 by using Windows Admin Center on SRV1 is to install Windows Admin Center on SRV1 and add DC1 as a managed server. Windows Admin Center is a web-based management tool that allows you to manage servers, clusters, Windows PCs, and Azure virtual machines (VMs) from a single interface. Here are the steps to install Windows Admin Center on SRV1 and add DC1 as a managed server:

- ? On SRV1, open a web browser and go to the folder named \\dc1.contoso.com\install. Download the Windows Admin Center installer file (WindowsAdminCenter.msi) and save it to a local folder, such as C:\Temp.
 - ? Run the Windows Admin Center installer file and follow the installation wizard. You can choose to install Windows Admin Center as a desktop app or as a service. For more information on how to install Windows Admin Center, see Install Windows Admin Center.
 - ? After the installation is complete, launch Windows Admin Center from the Start menu or the desktop shortcut. If you installed Windows Admin Center as a service, you can access it from a web browser by using the URL https://localhost:6516 or https://<SRV1>:6516, where <SRV1> is the name or IP address of SRV1.
 - ? On the Windows Admin Center dashboard, click Add to add a new connection. Select Server as the connection type and enter the name or IP address of DC1 in the Server name field. Optionally, you can specify the display name, description, and tags for the connection. Click Submit to add DC1 as a managed server.
 - ? On the Windows Admin Center dashboard, you should see DC1 listed under the Servers section. Click on DC1 to open the server overview page. From here, you can manage various aspects of DC1, such as roles and features, certificates, devices, events, files, firewall, processes, registry, services, and more. For more information on how to use Windows Admin Center to manage servers, see Manage servers with Windows Admin Center.
- Now, you can manage DC1 by using Windows Admin Center on SRV1. You can also add more servers or other types of connections to Windows Admin Center and manage them from the same interface

NEW QUESTION 7

HOTSPOT - (Topic 3)

Your network contains two Active Directory forests and a domain trust as shown in the following exhibit.



The domain trust has the following configurations:

- Name: adatum.com
Type: External
- Direction: One-way, outgoing
- Outgoing trust authentication level: Domain-wide authentication

Name	Domain
User1	adatum.com
User2	contoso.com
User3	east.contoso.com

The forests contain the network shares shown in the following table.

Name	In domain
Share1	adatum.com
Share2	contoso.com
Share3	east.contoso.com

For each of the following statements, select Yes if the statement is true. Otherwise, select No. NOTE: Each correct selection is worth one point.

Answer Area

Statements	Yes	No
User1 can be assigned permissions for Share3.	<input type="radio"/>	<input type="radio"/>
User2 can be assigned permissions for Share1.	<input type="radio"/>	<input type="radio"/>
User3 can be assigned permissions for Share1.	<input type="radio"/>	<input type="radio"/>

- A. Mastered
- B. Not Mastered

Answer: A

Explanation:

Answer Area

Statements	Yes	No
User1 can be assigned permissions for Share3.	<input checked="" type="radio"/>	<input type="radio"/>
User2 can be assigned permissions for Share1.	<input type="radio"/>	<input checked="" type="radio"/>
User3 can be assigned permissions for Share1.	<input type="radio"/>	<input checked="" type="radio"/>

Topic 4, Labs

NEW QUESTION 8

HOTSPOT - (Topic 3)

Your on-premises network contains an Active Directory Domain Services (AD DS) domain.

The domain contains the servers shown in the following table.

The domain controllers do NOT have internet connectivity.

You plan to implement Azure AD Password Protection for the domain.

You need to deploy Azure AD Password Protection agents. The solution must meet the following requirements:

- All Azure AD Password Protection policies must be enforced.
- Agent updates must be applied automatically.
- Administrative effort must be minimized.

What should you do? To answer select the appropriate options in the answer area. NOTE: Each correct selection is worth one point.

Answer Area

Install the Azure AD Password Protection agent on:

DC1 and DC2 only

DC1 only

DC1 and DC2 only

DC1, DC2, and RODC1

Install the Azure AD Password Protection Proxy on:

Server1

DC1

DC2

RODC1

Server1

Server2

- A. Mastered
- B. Not Mastered

Answer: A

Explanation:

Answer Area

Install the Azure AD Password Protection agent on:

DC1 and DC2 only

Install the Azure AD Password Protection Proxy on:

Server1

NEW QUESTION 9

- (Topic 3)

Your network contains an Active Directory Domain Services (AD DS) domain named contoso.com. The domain contains two servers named Server1 and Server2. Server1 contains a disk named Disk2. Disk2 contains a folder named UserData. UserData is shared to the Domain Users group. Disk2 is configured for deduplication. Server1 is protected by using Azure Backup.

Server1 fails.

You connect Disk2 to Server2.

You need to ensure that you can access all the files on Disk2 as quickly as possible. What should you do?

- A. Create a storage pool.
- B. Restore files from Azure Backup.
- C. Install the File Server Resource Manager server role.
- D. Install the Data Deduplication server role.

Answer: C

Explanation:

Reference:

<https://docs.microsoft.com/en-us/windows-server/storage/data-deduplication/overview>

NEW QUESTION 10

- (Topic 3)

You have a server that runs Windows Server and contains a shared folder named UserData.

You need to limit the amount of storage space that each user can consume in UserData. What should you use?

- A. Storage Spaces
- B. Work Folders
- C. Distributed File System (DFS) Namespaces
- D. File Server Resource Manager (FSRM)

Answer: D

Explanation:

Reference:

<https://docs.microsoft.com/en-us/windows-server/storage/fsrm/fsrm-overview>

NEW QUESTION 10

- (Topic 3)

You have an Azure virtual machine named VM1 that has a private IP address only. You configure the Windows Admin Center extension on VM1.

You have an on-premises computer that runs Windows 11. You use the computer for server management.

You need to ensure that you can use Windows Admin Center from the Azure portal to manage VM1.

What should you configure?

- A. an Azure Bastion host on the virtual network that contains VM1.
- B. a VPN connection to the virtual network that contains VM1.
- C. a network security group (NSG) rule that allows inbound traffic on port 443.
- D. a private endpoint on the virtual network that contains VM1.

Answer: B

Explanation:

Reference:

<https://docs.microsoft.com/en-us/windows-server/manage/windows-admin-center/azure/manage-vm>

NEW QUESTION 11

- (Topic 3)

You have an Active Directory Domain Services (AD DS) domain. The domain contains three servers named Server 1, Server2, and Server3 that run Windows Server.

You sign in to Server1 by using a domain account and start a remote PowerShell session to Server2. From the remote PowerShell session, you attempt to access a resource on Server3. but access to the resource is denied.

You need to ensure that your credentials are passed from Server1 to Server3. The solution must minimize administrative effort. What should you do?

- A. Configure Kerberos constrained delegation.
- B. Configure Just Enough Administration (JEA).
- C. Configure selective authentication for the domain.
- D. Disable the Enforce user logon restrictions policy setting for the domain.

Answer: A

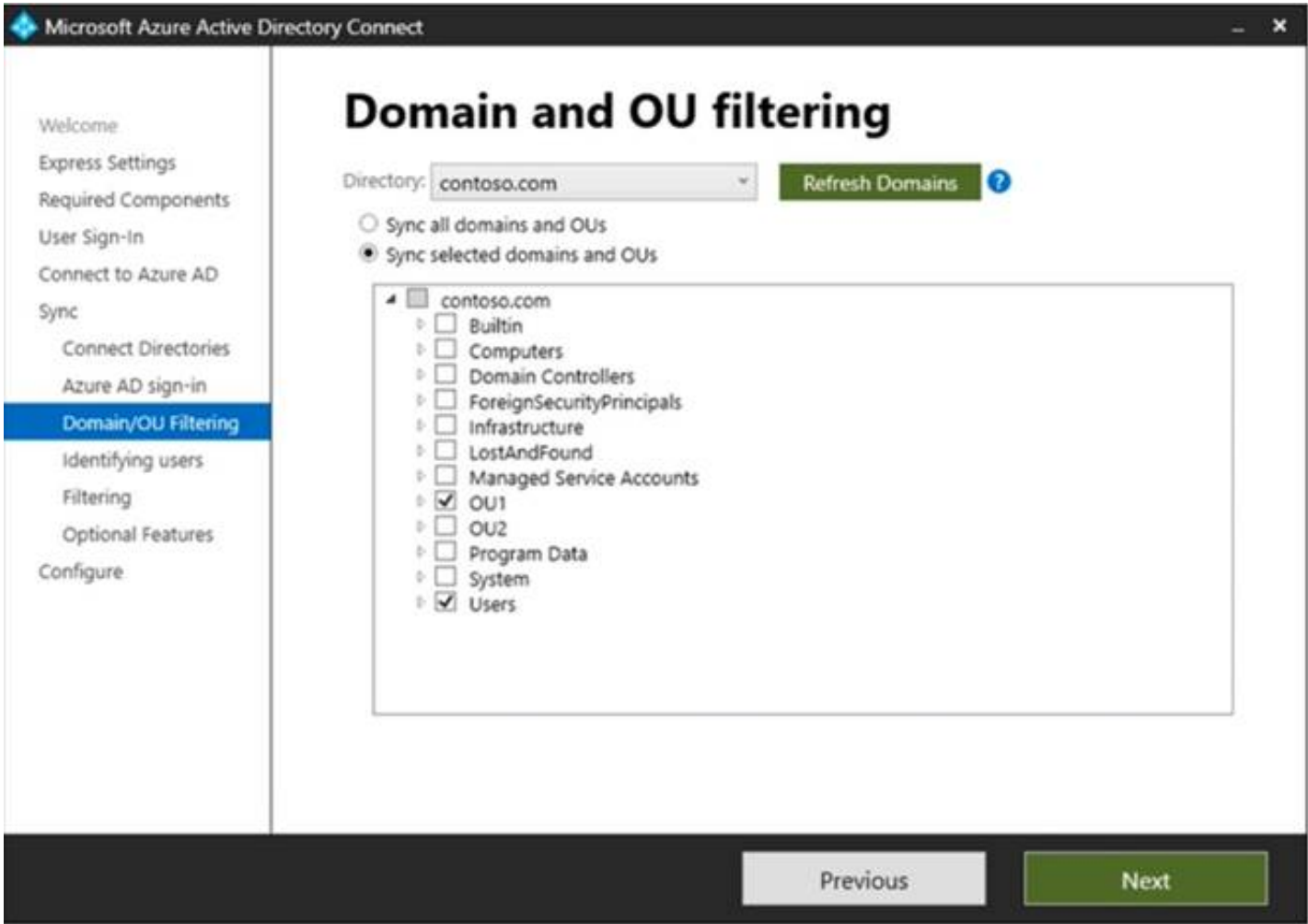
NEW QUESTION 15

HOTSPOT - (Topic 3)

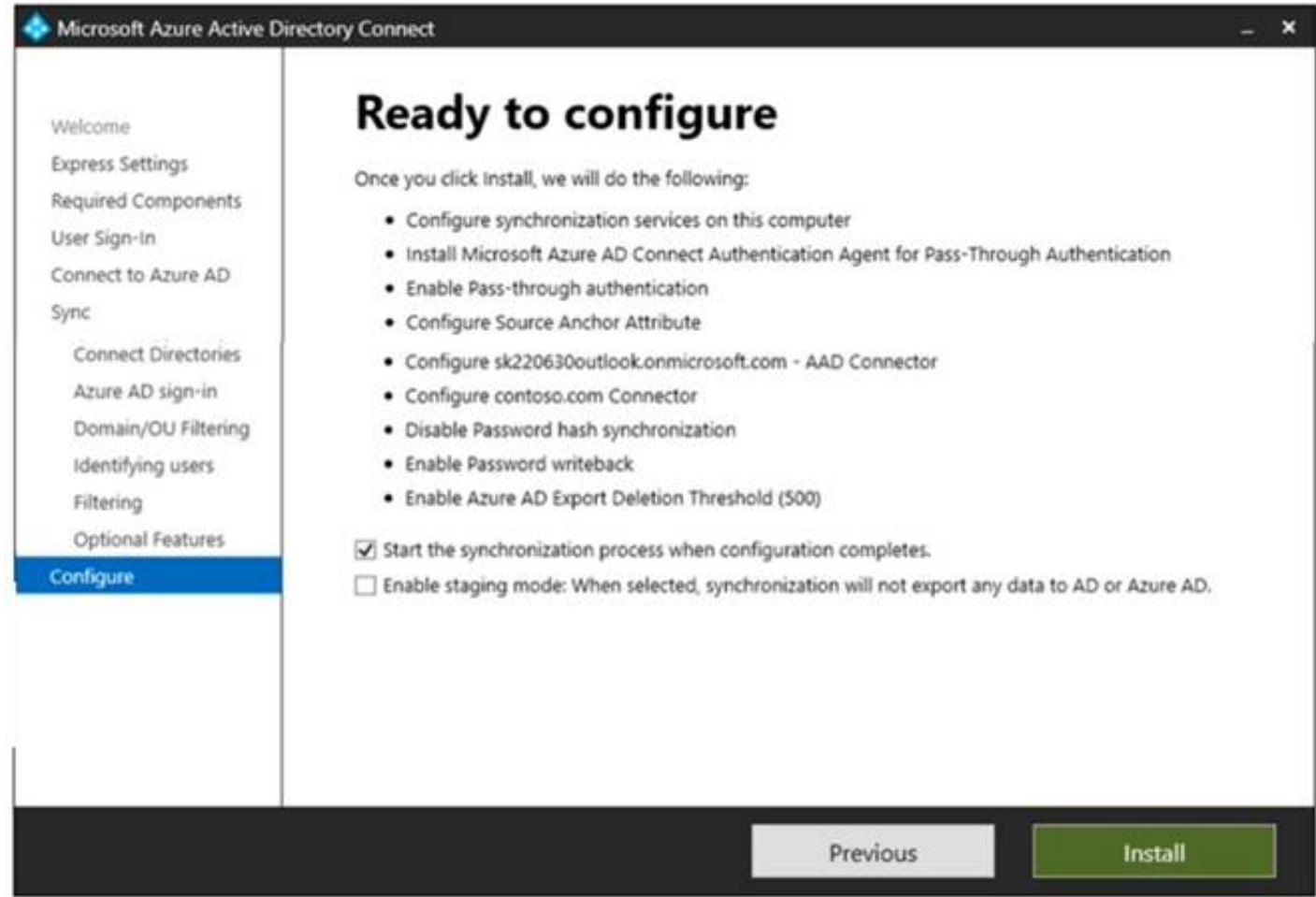
Your network contains an on-premises Active Directory Domain Services (AD DS) domain named contoso.com that syncs with an Azure AD tenant. The tenant contains a group named Group1 and the users shown in the following table.

Name	In organizational unit (OU)
User1	OU1
User2	OU2

Domain/OU filtering in Azure AD Connect is configured as shown in the Filtering exhibit. (Click the Filtering tab.)



You review the Azure AD Connect configurations as shown in the Configure exhibit. (Click the Configure tab.)



For each of the following statements, select Yes if the statement is true. Otherwise, select No. NOTE: Each correct selection is worth one point.

Answer Area

Statements	Yes	No
User1 can use self-service password reset (SSPR) to reset his password.	<input type="radio"/>	<input type="radio"/>
If User1 connects to Microsoft Exchange Online, an on-premises domain controller provides authentication.	<input type="radio"/>	<input type="radio"/>
You can add User2 to Group1 as a member.	<input type="radio"/>	<input type="radio"/>

- A. Mastered
- B. Not Mastered

Answer: A

Explanation:

Answer Area

Statements	Yes	No
User1 can use self-service password reset (SSPR) to reset his password.	<input type="radio"/>	<input checked="" type="radio"/>
If User1 connects to Microsoft Exchange Online, an on-premises domain controller provides authentication.	<input type="radio"/>	<input checked="" type="radio"/>
You can add User2 to Group1 as a member.	<input type="radio"/>	<input checked="" type="radio"/>

NEW QUESTION 18

HOTSPOT - (Topic 3)

You have an Azure subscription that contains a virtual network named VNet1. Vnet1 contains three subnets named Subnet1, Subnet2, and Subnet3. You deploy a virtual machine that has the following settings:

- Name: VM1
- Subnet: Subnet2
- Network interface name: NIC1
- Operating system: Windows Server 2022

You need to ensure that VM1 can route traffic between Subnet1 and Subnet3. The solution must minimize administrative effort.

What should you do? To answer, select the appropriate options in the answer area. NOTE: Each correct selection is worth one point.

Answer Area

From the Azure portal:

Associate a routing table with Subnet2.

Associate a routing table with Subnet2.

Attach two additional interfaces to VM1.

Enable IP forwarding for NIC1.

On VM1:

Install and configure a network controller.

Install and configure a network controller.

Install and configure Routing and Remote Access.

Run the route add command.

- A. Mastered
- B. Not Mastered

Answer: A

Explanation:

Answer Area

From the Azure portal:

Associate a routing table with Subnet2.

Associate a routing table with Subnet2.

Attach two additional interfaces to VM1.

Enable IP forwarding for NIC1.

On VM1:

Install and configure a network controller.

Install and configure a network controller.

Install and configure Routing and Remote Access.

Run the route add command.

NEW QUESTION 20

- (Topic 3)

Your network contains an on-premises Active Directory Domain Services (AD DS) domain named contoso.com. The domain contains three servers that run Windows Server and have the Hyper-V server role installed. Each server has a Switch Embedded Teaming (SET) team.

You need to verify that Remote Direct Memory Access (RDMA) and required Windows Server settings are configured properly on each server to support a failover cluster.

What should you use?

- A. the validate-DCB cmdlet
- B. Server Manager
- C. the Get-NetAdapter cmdlet
- D. Failover Cluster Manager

Answer: A

NEW QUESTION 23

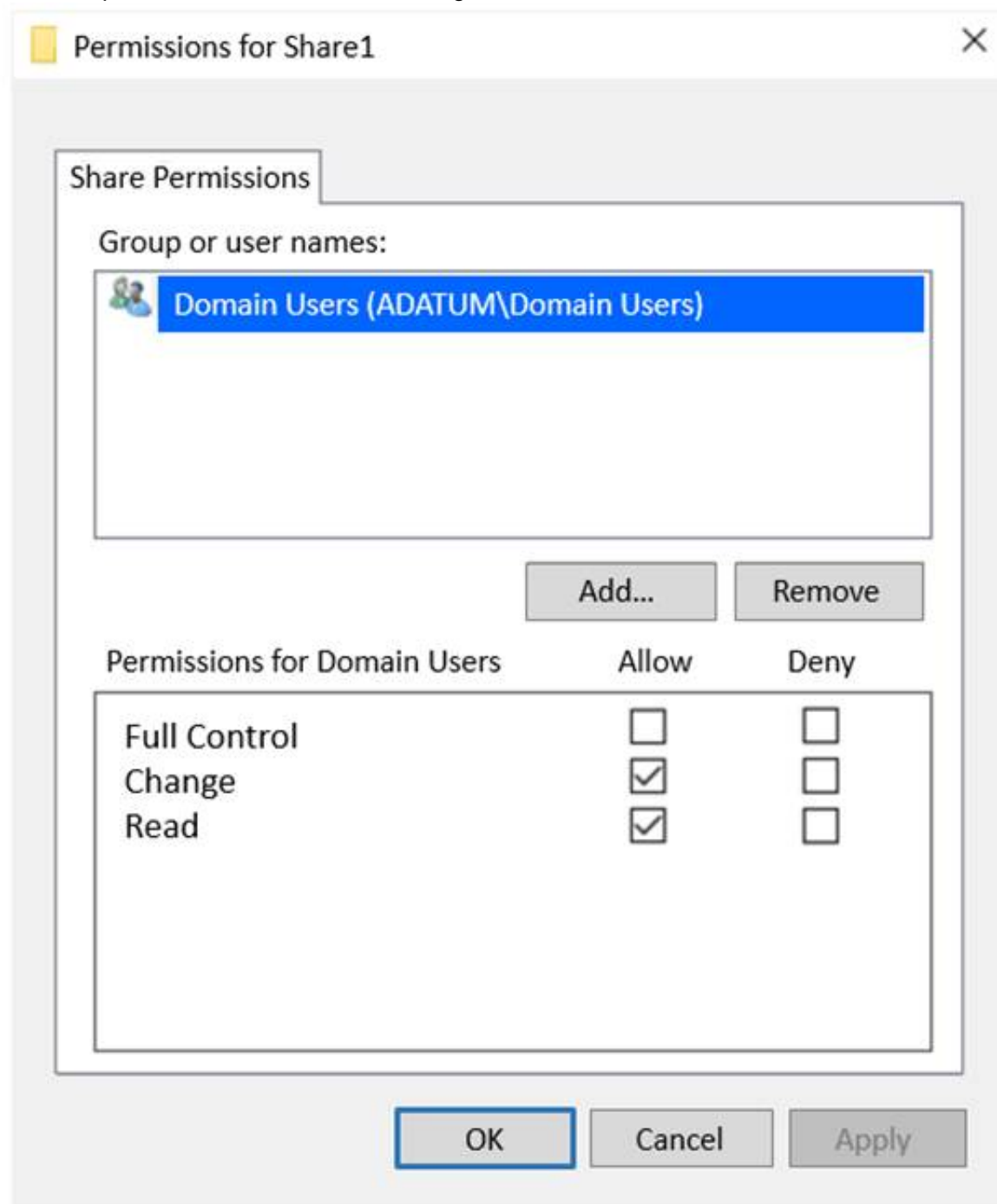
HOTSPOT - (Topic 3)

Your network contains an Active Directory Domain Services (AD DS) domain named adatum.com. The domain contains a file server named Server1 and three users named User1, User2, and User3.

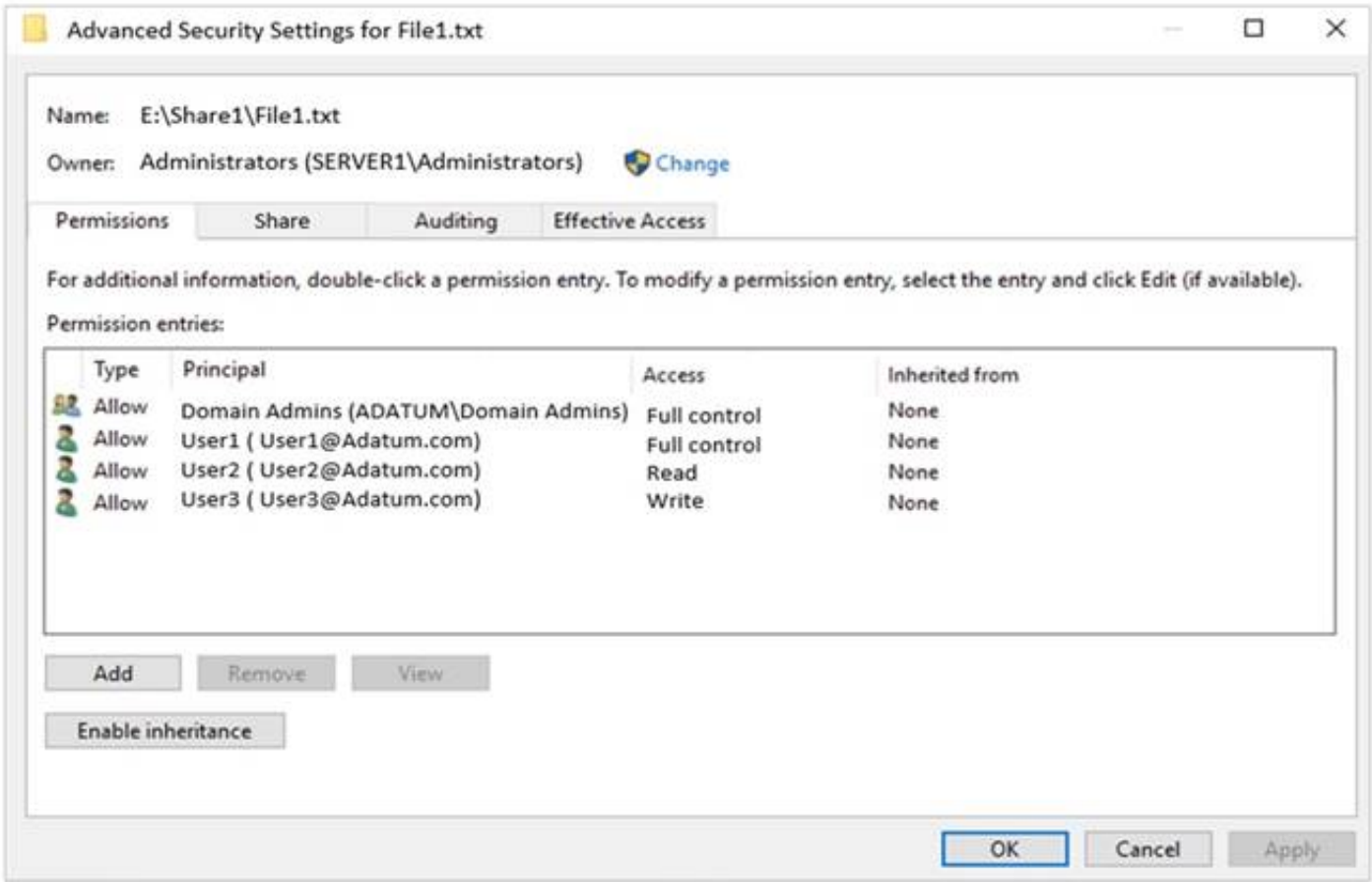
Server1 contains a shared folder named Share1 that has the following configurations:


```
ShareState           : Online
AvailabilityType     : NonClustered
FolderEnumerationMode : AccessBased
CachingMode         : Manual
LeasingMode          : Full
SmbInstance          : Default
CompressData         : False
ContinuouslyAvailable : False
EncryptData          : False
Name                 : Share1
Path                 : E:\Share1
ShadowCopy           : False
```

The share permissions for Share1 are configured as shown in the Share Permissions exhibit.



Share1 contains a file named File1.bxt. The share settings for File1.txt are configured as shown in the File Permissions exhibit.



For each of the following statements, select Yes if the statement is true. Otherwise, select No.
NOTE: Each correct selection is worth one point.

Statements	Yes	No
When User1 connects to \\Server1.adatum.com\Share1\, the user can take ownership of File1.txt.	<input type="checkbox"/>	<input type="checkbox"/>
When User2 connects to \\Server1.adatum.com\Share1\, File1.txt is visible.	<input type="checkbox"/>	<input type="checkbox"/>
When User3 connects to \\Server1.adatum.com\Share1\, File1.txt is visible.	<input type="checkbox"/>	<input type="checkbox"/>

- A. Mastered
- B. Not Mastered

Answer: A

Explanation:

Statements	Yes	No
When User1 connects to \\Server1.adatum.com\Share1\, the user can take ownership of File1.txt.	<input type="checkbox"/>	<input checked="" type="checkbox"/>
When User2 connects to \\Server1.adatum.com\Share1\, File1.txt is visible.	<input checked="" type="checkbox"/>	<input type="checkbox"/>
When User3 connects to \\Server1.adatum.com\Share1\, File1.txt is visible.	<input checked="" type="checkbox"/>	<input type="checkbox"/>

NEW QUESTION 27

- (Topic 3)
Your network contains a DHCP server.
You plan to add a new subnet and deploy Windows Server to the subnet. You need to use the server as a DHCP relay agent.
Which role should you install on the server?

- A. Network Policy and Access Services
- B. Remote Access
- C. Network Controller
- D. DHCP Server

Answer: B

NEW QUESTION 30

HOTSPOT - (Topic 3)
Your company has offices in Boston and Montreal. The offices are connected by using a 10-Mbps WAN link that is often saturated The office in Boston contains the following:
• An Active Directory Domain Services (AD DS) domain controller named DC1.
• A server named Server1 that runs Windows Server and has the File Server role installed The office in Montreal contains 20 client computers that run Windows

10 Montreal does
NOT have any servers.
The company plans to deploy a new line of business (LOB) application to all the client computers. The installation source files for the application are in \\Server\Apps.

Answer Area

On Server1:

Enable BranchCache in hosted cache mode.
Enable BranchCache in Distributed Cache mode.
Install the BranchCache for network files role service.

On the client computers:

Enable BranchCache in hosted cache mode.
Enable BranchCache in Distributed Cache mode.
Install the BranchCache for network files role service.

- A. Mastered
- B. Not Mastered

Answer: A

Explanation:

Answer Area

On Server1:

Enable BranchCache in hosted cache mode.
Enable BranchCache in Distributed Cache mode.
Install the BranchCache for network files role service.

On the client computers:

Enable BranchCache in hosted cache mode.
Enable BranchCache in Distributed Cache mode.
Install the BranchCache for network files role service.

NEW QUESTION 34

- (Topic 3)
You have an Active Directory domain that contains a file server named Server1. Server1 runs Windows Server and includes the file shares shown in the following table.

Share Name	Path
Users	D:\Users
Accounts	D:\Dept\Accounts
Marketing	D:\Dept\Marketing
CustomerService	D:\Dept\CustomerService

- When users login to the network they receive the following network drive mappings.
- H: maps to Wserver1\users\%UserName%
 - G: maps to \\server1\%Department%
- You need to limit the amount of space consumed by user's on Server!. The solution must meet the following requirements:
- Prevent users using more than 5GB of space on their H: drive
 - Prevent Accounts department users from using more than 10GB of space on the G: drive
 - Prevent Marketing department users from using more than 15GB of space on the G: drive
 - Prevent Customer Service department users from using more than 2GB of space on the G: drive
 - Minimize administrative effort What should you use?

- A. File Server Resource Manager (FSRM) quotas
- B. Storage tiering
- C. NTFS Disk quotas
- D. Group Policy Preferences

Answer: A

NEW QUESTION 37

- (Topic 3)
You have an on-premises Active Directory Domain Services (AD DS) domain that syncs with an Azure Active Directory (Azure AD) tenant Group writeback is enabled in Azure AD Connect.
The AD DS domain contains a server named Server1 Server 1 contains a shared folder named share1.
You have an Azure Storage account named storage2 that uses Azure AD-based access control. The storage2 account contains a share named shared
You need to create a security group that meets the following requirements:
- Can contain users from the AD DS domain
 - Can be used to authorize user access to share 1 and share2 What should you do?

- A. in the AD DS domain, create a universal security group
- B. in the Azure AD tenant create a security group that has assigned membership

- C. in the Azure AD Tenant create a security group that has dynamic membership.
- D. in the Azure AD tenant create a Microsoft 365 group

Answer: B

NEW QUESTION 41

- (Topic 3)

You have an on-premises Active Directory Domain Services (AD DS) domain named contoso.com that syncs with Azure AD by using Azure AD Connect.

You enable password protection for contoso.com.

You need to prevent users from including the word Contoso as part of their password. What should you use?

- A. the Azure Active Directory admin center
- B. Active Directory Users and Computers
- C. Synchronization Service Manager
- D. Windows Admin Center

Answer: D

NEW QUESTION 44

HOTSPOT - (Topic 3)

You plan to deploy an Azure virtual machine that will run Windows Server. The virtual machine will host an Active Directory Domain Services (AD DS) domain controller and a drive named f: on a new virtual disk.

You need to configure storage for the virtual machine. The solution must meet the following requirements

- Maximize resiliency for AD DS.
- Prevent accidental data loss.

How should you configure the storage? To answer, select the appropriate options in the answer area.

NOTE: Each correct selection is worth one point.

Answer Area

Volume for the AD DS database:

Caching configuration for the volume that hosts the database:

Answer Area

Volume for the AD DS database:

Caching configuration for the volume that hosts the database:

- A. Mastered
- B. Not Mastered

Answer: A

NEW QUESTION 45

DRAG DROP - (Topic 3)

Your network contains two Active Directory Domain Services (AD DS) forests named contoso.com and fabrikam.com. Contoso.com contains three child domains named amer.contoso.com, apac.contoso.com, and emea.contoso.com. Fabrikam.com contains a child domain named apac.fabrikam.com. A bidirectional forest trust exists between contoso.com and fabrikam.com.

You need to provide users in the contoso.com forest with access to the resources in the fabrikam.com forest. The solution must meet the following requirements:

- Users in contoso.com must only be added directly to groups in the contoso.com forest.
- Permissions to access the resources in fabrikam.com must only be granted directly to groups in the fabrikam.com forest.
- The number of groups must be minimized.

Which type of groups should you use to organize the users and to assign permissions? To answer, drag the appropriate group types to the correct requirements.

Each group type may be used once, more than once, or not at all. You may need to drag the split bar between panes or scroll to view content.

NOTE: Each correct selection is worth one point.

Group types

Domain global

Domain local

Universal

Answer Area

Organize users:

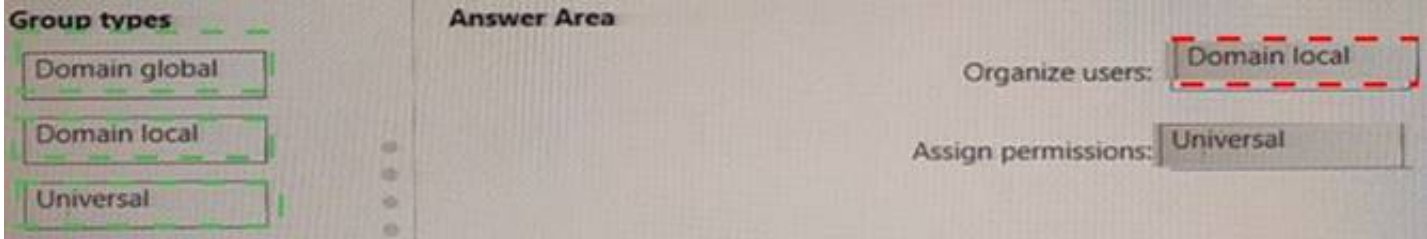
Assign permissions:

A. Mastered

B. Not Mastered

Answer: A

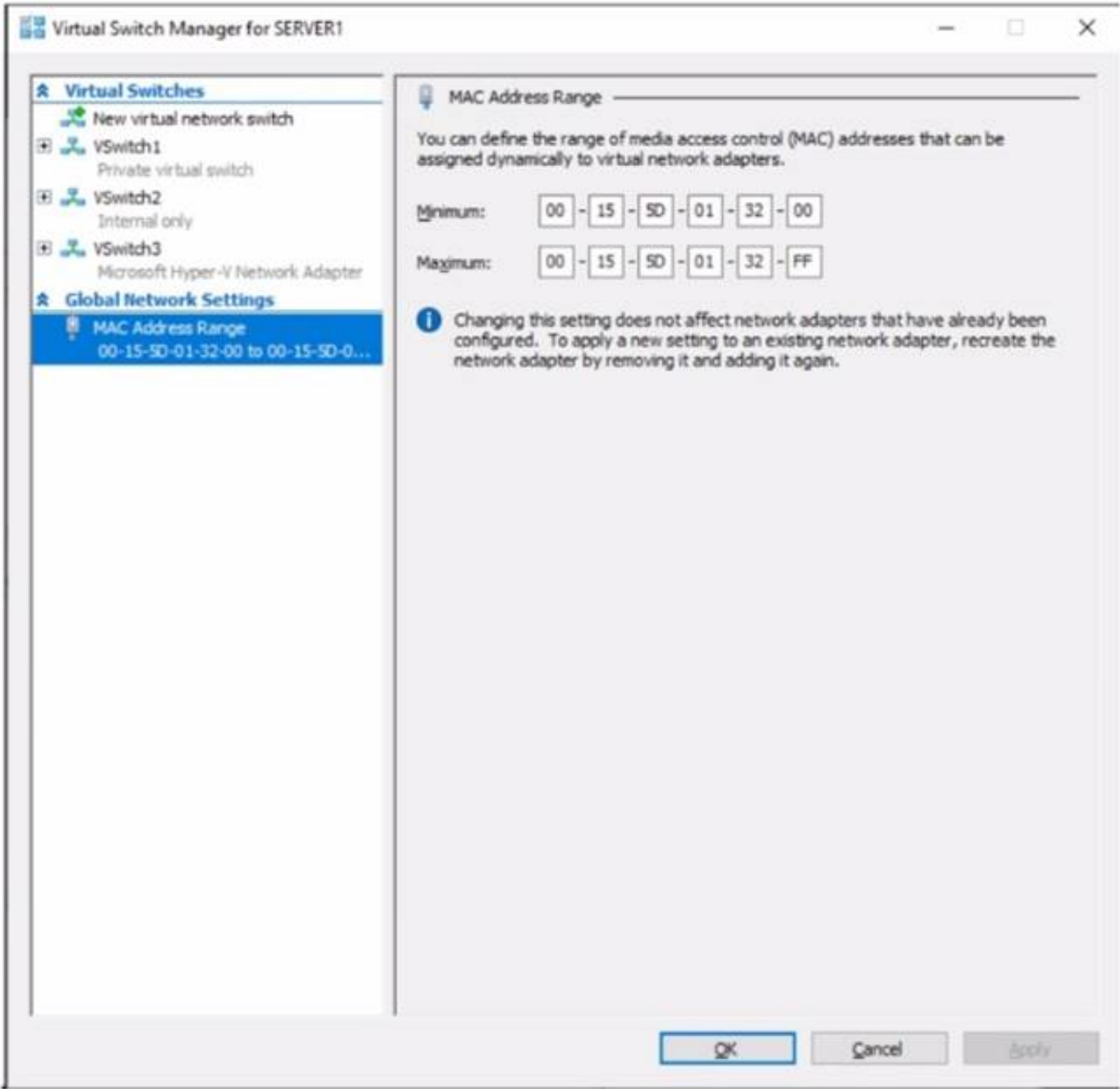
Explanation:



NEW QUESTION 46

HOTSPOT - (Topic 3)

You have a server named Server1 that runs Windows Server. Server1 has a single network interface and the Hyper-V virtual switches shown in the following exhibit.



Use the drop-down menus to select the answer choice that completes each statement based on the information presented in the graphic.
NOTE: Each correct selection is worth one point.

Answer Area

On Server1, you can create additional [answer choice].

private and internal virtual switches only

internal virtual switches only

private virtual switches only

private and internal virtual switches only

private, internal, and external virtual switches

Server1 can access network shares on virtual machines that are connected to [answer choice].

VSwitch1, VSwitch2, or VSwitch3

VSwitch2 only

VSwitch3 only

VSwitch1 or VSwitch2 only

VSwitch2 or VSwitch3 only

VSwitch1, VSwitch2, or VSwitch3

A. Mastered
B. Not Mastered

Answer: A

Explanation:

Answer Area

On Server1, you can create additional [answer choice].

private and internal virtual switches only

internal virtual switches only

private virtual switches only

private and internal virtual switches only

private, internal, and external virtual switches

Server1 can access network shares on virtual machines that are connected to [answer choice].

VSwitch1, VSwitch2, or VSwitch3

VSwitch2 only

VSwitch3 only

VSwitch1 or VSwitch2 only

VSwitch2 or VSwitch3 only

VSwitch1, VSwitch2, or VSwitch3

NEW QUESTION 47

DRAG DROP - (Topic 3)

You create a new Azure subscription.

You plan to deploy Azure Active Directory Domain Services (Azure AD DS) and Azure virtual machines.

You need to ensure that the virtual machines can join Azure AD DS.

Which three actions should perform in sequence? To answer, move the appropriate actions from the list of action of the answer area and arrange them in the correct order.

Actions

Run the Active Directory Domain Services Installation Wizard.

Create an Azure virtual network.

Install the Active Directory Domain Services role.

Install Azure AD Connect.

Modify the settings of the Azure virtual network.

Create an Azure AD DS instance.

Answer Area

- A. Mastered
- B. Not Mastered

Answer: A

Explanation:

Actions

Run the Active Directory Domain Services Installation Wizard.

Create an Azure virtual network.

Install the Active Directory Domain Services role.

Install Azure AD Connect.

Modify the settings of the Azure virtual network.

Create an Azure AD DS instance.

Answer Area

Create an Azure virtual network.

Create an Azure AD DS instance.

Modify the settings of the Azure virtual network.

NEW QUESTION 50

- (Topic 3)

You have an on-premises server named Server 1 that runs Windows Server. You have an Azure subscription that contains a virtual network named VNet1. You need to connect Server1 to VNet1 by using Azure Network Adapter. What should you use?

- A. the Azure portal
- B. Azure AD Connect
- C. Device Manager
- D. Windows Admin Center

Answer: B

NEW QUESTION 53

- (Topic 3)

Note: This question is part of a series of questions that present the same scenario. Each question in the series contains a unique solution that might meet the stated goals. Some question sets might have more than one correct solution, while others might not have a correct solution.

After you answer a question in this section, you will NOT be able to return to it. As a result, these questions will not appear in the review screen.

Your network contains an Active Directory Domain Services (AD DS) forest. The forest contains three Active Directory sites named Site1, Site2, and Site3. Each site contains two domain controllers. The sites are connected by using DEFAULTSITELINK.

You open a new branch office that contains only client computers.

You need to ensure that the client computers in the new office are primarily authenticated by the domain controllers in Site1.

Solution: You create a new site named Site4 and associate Site4 to DEFAULTSITELINK. Does this meet the goal?

- A. Yes
- B. No

Answer: B

NEW QUESTION 58

HOTSPOT - (Topic 3)

Your network contains an Active Directory Domain Services (AD DS) domain. The domain contains the domain controllers shown in the following table.

Name	Description
DC1	Has the schema master, infrastructure master, and domain naming master roles
DC2	Has the PDC emulator and RID master roles and is a global catalog server
DC3	None

You need to configure DC3 to be the authoritative time server for the domain.

Which operations master role should you transfer to DC3, and which console should you use? To answer, select the appropriate options in the answer area.

NOTE: Each correct selection is worth one point.

Answer Area

Role:

PDC emulator

Domain naming master

Infrastructure master

PDC emulator

RID master

Schema master

Console:

Active Directory Users and Computers

Active Directory Admin

Active Directory Doma

Active Directory Sites (Active Directory Sites and Services)

Active Directory Users and Computers

- A. Mastered
- B. Not Mastered

Answer: A

Explanation:

Answer Area

Role:

PDC emulator

Domain naming master

Infrastructure master

PDC emulator

RID master

Schema master

Console:

Active Directory Users and Computers

Active Directory Admin

Active Directory Doma

Active Directory Sites (Active Directory Sites and Services)

Active Directory Users and Computers

NEW QUESTION 63

HOTSPOT - (Topic 3)

Your network contains an Active Directory Domain Services (AD DS) forest named contoso.com. The forest contains a child domain named east.contoso.com. In the contoso.com domain, you create two users named Admin1 and Admin2. You need to ensure that the users can perform the following tasks:

- Admin1 can create and manage Active Directory sites.
- Admin2 can deploy domain controller to the east.contoso.com domain. The solution must use the principle of least privilege.

To which group should you add each user? To answer, select the appropriate options in the answer area.

NOTE Each correct selection is worth one point.

Answer Area

Admin1:

Contoso\Administrators

Contoso\Domain Admins

Contoso\Enterprise Admins

East\Administrators

East\Domain Admins

Admin2:

Contoso\Administrators

Contoso\Domain Admins

Contoso\Enterprise Admins

East\Administrators

East\Domain Admins

- A. Mastered
- B. Not Mastered

Answer: A

Explanation:

Answer Area

Admin1: Contoso\Enterprise Admins

Admin2: East\Domain Admins

NEW QUESTION 66

DRAG DROP - (Topic 3)

Your network contains an Active Directory domain named contoso.com. The domain contains group managed service accounts (gMSAs). You have a server named Server1 that runs Windows Server and is in a workgroup. Server1 hosts Windows containers. You need to ensure that the Windows containers can authenticate to contoso.com. Which three actions should you perform in sequence? To answer, move the appropriate actions from the list of actions to the answer area and arrange them in the correct order.

Actions

On Server1, install and run ccg.exe.

On Server1, run New-CredentialSpec.

In contoso.com, generate a Key Distribution Service (KDS) root key.

In contoso.com, create a gMSA and a standard user account.

From a domain-joined computer, create a credential spec file and copy the file to Server1.

Answer Area

- A. Mastered
- B. Not Mastered

Answer: A

Explanation:

Actions

On Server1, install and run ccg.exe.

On Server1, run New-CredentialSpec.

In contoso.com, generate a Key Distribution Service (KDS) root key.

In contoso.com, create a gMSA and a standard user account.

From a domain-joined computer, create a credential spec file and copy the file to Server1.

Answer Area

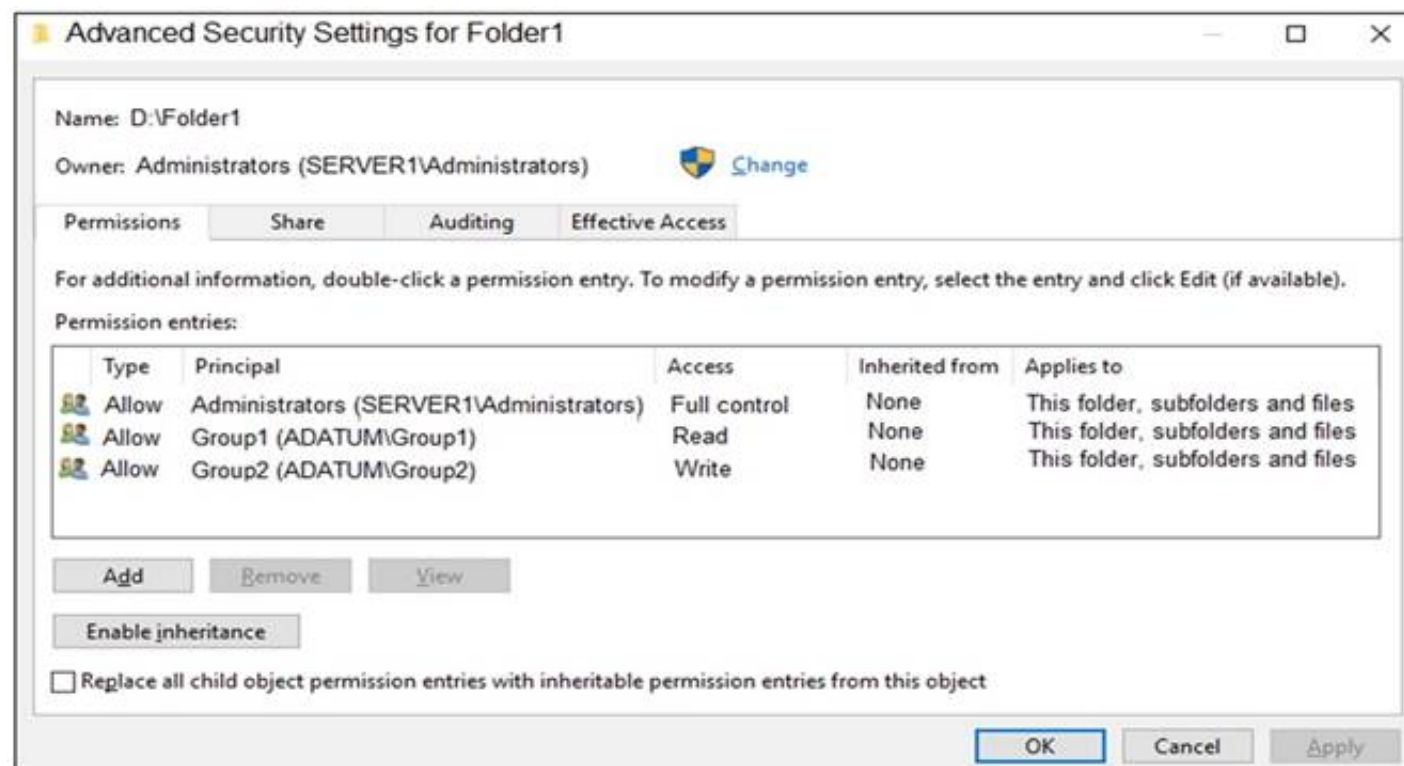
NEW QUESTION 69

HOTSPOT - (Topic 3)

Your network contains an Active Directory Domain Services (AD DS) domain named adatum.com. The domain contains a server named Server1 and the users shown in the following table.

Name	Member of
User1	Group1
User2	Group2
User3	Group3

Server1 contains a folder named D:\Folder1. The advanced security settings for Folder1 are configured as shown in the Permissions exhibit. (Click the Permissions tab.)



Folder1 is shared by using the following configurations:

```
Path           : D:\Folder1
Name           : Share1
ShareType      : FileSystemDirectory
FolderEnumerationMode : Unrestricted
```

The share permissions for Share1 are shown in the following table.

Group	Permission
Group1	Allow – Change
Group3	Allow – Full Control

For each of the following statements, select Yes if the statement is true. Otherwise, select No.

NOTE: Each correct selection is worth one point.

Statements

Yes

No

User1 can read the files in Share1.

☐
☐

User3 can delete files in Share1.

☐
☐

If User2 connects to \\Server1.adatum.com from File Explorer, Share1 will be listed.

☐
☐

- A. Mastered
- B. Not Mastered

Answer: A

Explanation:

To access files in a shared folder, you need to be granted permissions on the folder (NTFS permissions) AND permissions on the share. The most restrictive permission of the folder permissions and share permissions apply.

Box 1: Yes

Group1 has Read access to Folder1 and Change access to Share1. Therefore, User1 can read the files in Share1.

Box 2: No

Group3 has Full Control access to Share1. However, Group3 has no permissions configured Folder1. Therefore, User3 cannot access the files in Share1.

Box 3: Yes

Group2 has write permission to Folder1. However, Group2 has no permission on Share1. Therefore, users in Group2 cannot access files in the shared folder.

Access Based Enumeration when enabled hides files and folders that users do not have permission to access. However, Access Based Enumeration is not enabled on Share1.

This is indicated by the FolderEnumerationMode – Unrestricted setting. Therefore, the share will be visible to User2 even though User2 cannot access the shared folder.

NEW QUESTION 72

- (Topic 3)

You have an Azure subscription that contains the following resources:

- An Azure Log Analytics workspace
- An Azure Automation account
- Azure Arc.

You have an on-premises server named Server1 that is onboarded to Azure Arc. You need to manage Microsoft updates on Server1 by using Azure Arc. Which two actions should you perform? Each correct answer presents part of the solution. NOTE: Each correct selection is worth one point.

- A. Add Microsoft Sentinel to the Log Analytics workspace
- B. On Server1, install the Azure Monitor agent
- C. From the Automation account, enable Update Management for Server1.
- D. From the Virtual machines data source of the Log Analytics workspace, connect Server1.

Answer: BC

Explanation:

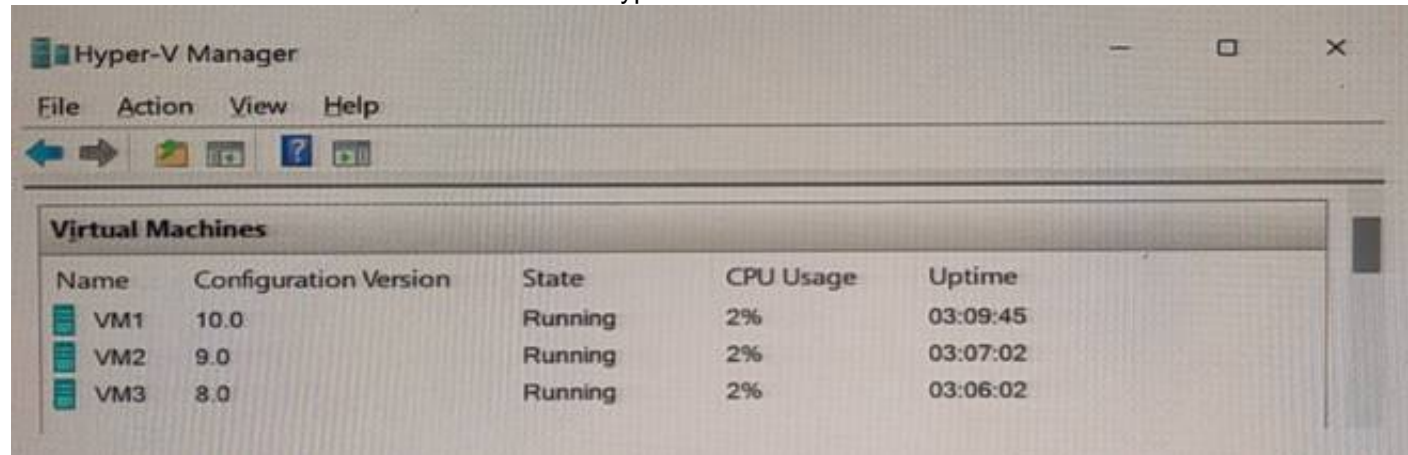
Reference:

<https://docs.microsoft.com/en-us/azure/cloud-adoption-framework/manage/hybrid/server/best-practices/arc-update-management>

NEW QUESTION 77

HOTSPOT - (Topic 3)

You have a server named Server1 that has the Hyper-V server role installed. Server1 hosts the virtual machines shown in the following exhibit.



Name	Configuration Version	State	CPU Usage	Uptime
VM1	10.0	Running	2%	03:09:45
VM2	9.0	Running	2%	03:07:02
VM3	8.0	Running	2%	03:06:02

Use the drop-down menus to select the answer choice that completes each statement based on the information presented in the graphic.

NOTE: Each correct selection is worth one point.

Answer Area

[Answer choice] can have production checkpoints. Only VM1

[Answer choice] can be hibernated. VM1, VM2, and VM3

- A. Mastered
- B. Not Mastered

Answer: A

Explanation:

Answer Area

[Answer choice] can have production checkpoints. Only VM1

[Answer choice] can be hibernated. VM1, VM2, and VM3

NEW QUESTION 78

- (Topic 3)

You have an on-premises server named Server1 that runs Windows Server. You have an Azure virtual network that contains an Azure virtual network gateway. You need to connect only Server1 to the Azure virtual network. What should you use?

- A. Azure Network Adapter
- B. a Site-to-Site VPN
- C. an ExpressRoute circuit
- D. Azure Extended Network

Answer: B

Explanation:

Reference:

<https://docs.microsoft.com/en-us/windows-server/manage/windows-admin-center/azure/use-azure-network-adapter>

NEW QUESTION 83

- (Topic 3)

Your network contains an Active Directory Domain Services (AD DS) domain.

You have a Group Policy Object (GPO) named GPO1 that contains Group Policy preferences.

You plan to link GPO1 to the domain.

You need to ensure that the preference in GPO1 apply only to domain member servers and NOT to domain controllers or client computers. All the other Group Policy settings in GPO1 must apply to all the computers. The solution must minimize administrative effort.

Which type of item level targeting should you use?

- A. Domain
- B. Operating System
- C. Security Group
- D. Environment Variable

Answer: B

Explanation:

Reference:

[https://docs.microsoft.com/en-us/previous-versions/windows/it-pro/windows-server-2012-r2-and-2012/dn789189\(v=ws.11\)#operating-system-targeting](https://docs.microsoft.com/en-us/previous-versions/windows/it-pro/windows-server-2012-r2-and-2012/dn789189(v=ws.11)#operating-system-targeting)

NEW QUESTION 88

HOTSPOT - (Topic 3)

You have an Active Directory Domain Services (AD DS) domain that contains the member servers shown in the following table.

Name	Operating system	Data Deduplication role service
Server1	Windows Server 2019	Installed
Server2	Windows Server 2022	Not installed
Server3	Windows Server 2022	Installed

Server3 contains a data disk named Disk1 that has Data Deduplication installed. Disk1 contains the files shown in the following table.

Name	Size
File1.txt	5 KB
File2.docx	800 KB
File3.sys	2 MB
File4.bmp	5 GB

Server3 fails.

You need to recover the files on Disk1.

Which files can you recover if you attach Disk1 to Server 1, and which files can you recover if you attach Disk1 to Server2? To answer, select the appropriate options in the answer area.

NOTE: Each correct selection is worth one point.

Answer Area

Server1:

File1.txt only

File1.txt only

File1.txt and File2.docx only

File1.txt and File3.sys only

File1.txt, File2.docx, File3.sys, and File4.bmp

No files can be recovered.

Server2:

File1.txt and File2.docx only

File1.txt only

File1.txt and File2.docx only

File1.txt and File3.sys only

File1.txt, File2.docx, File3.sys, and File4.bmp

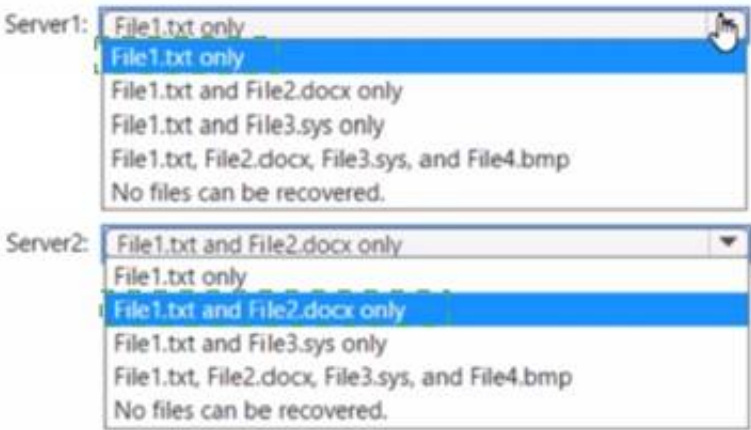
No files can be recovered.

- A. Mastered
- B. Not Mastered

Answer: A

Explanation:

Answer Area



NEW QUESTION 90

HOTSPOT - (Topic 3)

You need to sync files from an on premises server named Server1 to Azure by using Azure File Sync.
You have a cloud tiering policy that is configured for 30 percent free space and 70 days. Volume E on Server1 is 500 GB.
A year ago, you configured E:\Data on Server1 to sync by using Azure File Sync. The files that are visible in E:\Data are shown in the following table.

Name	Size	Last accessed
File1	200 GB	2 days ago
File2	100 GB	10 days ago
File3	200 GB	60 days ago
File4	50 GB	100 days ago

Volume E does NOT contain any other files.
Where are File1 and File3 located? To answer, select the appropriate options in the answer area.
NOTE: Each correct selection is worth one point.

File1:

Server1 only

The Azure file share only

Server1 and the Azure file share

File3:

Server1 only

The Azure file share only

Server1 and the Azure file share

- A. Mastered
- B. Not Mastered

Answer: A

Explanation:

File1:

Server1 only

The Azure file share only

Server1 and the Azure file share

File3:

Server1 only

The Azure file share only

Server1 and the Azure file share

NEW QUESTION 93

- (Topic 3)
You have two servers that have the Hyper-V server role installed. The servers are joined to a failover cluster both servers can connect to the same disk on an iSCSi storage device. You plan to use the iSCSI storage to store highly available Hyper-V virtual machines that will support live migration functionality. You need to configure a storage resource in the failover cluster to store the virtual machines. What should you configure?

- A. a storage pool
- B. attributed File System (DFS) Replication
- C. a mirrored volume
- D. Cluster Shared volumes (CSV)

Answer: D

NEW QUESTION 97

- (Topic 3)
Your network contains a Active Directory Domain Service (AD DS) forest named contoso.com. The forest root domain contains a server named server1. contoso.com.
A two-way forest trust exists between the contoso.com forest and an AD DS forest named fabrikam.com. The fabrikam.com forest contains 10 child domains. You need to ensure that only the members of a group named fabrikam\Group1 can authenticate to server1.contoso.com. What should you do first?

- A. Change the trust to a one-way external trust.
- B. Add fabrikam\Group1 to the local Users group on server1.contoso.com.
- C. Enable SID filtering for the trust.
- D. Enable Selective authentication for the trust.

Answer: B

NEW QUESTION 98

HOTSPOT - (Topic 3)
You have a file server named Server1 that runs Windows Server and contains the volumes shown in the following table.

Name	File system
C	NTFS
D	NTFS
E	REFS

On which volumes can you use BitLocker Drive Encryption (BitLocker) and disk quotas? To answer select the appropriate options in the answer area. NOTE Each correct selection is worth one point.

Answer Area

BitLocker:

C only

D only

C and D only

D and E only

C, D, and E

Disk quotas:

C only

D only

C and D only

D and E only

C, D, and E

- A. Mastered
- B. Not Mastered

Answer: A

Explanation:

Answer Area

BitLocker:

C only

D only

C and D only

D and E only

C, D, and E

Disk quotas:

C only

D only

C and D only

D and E only

C, D, and E

NEW QUESTION 99

DRAG DROP - (Topic 3)

You have an Azure subscription. The subscription contains a virtual machine named VM1 that runs Windows Server. VM1 contains a 128-GB operating system disk.

You need to increase the size of volume C on VM1 to 250 GB.

Which four actions should you perform in sequence? To answer, move the appropriate actions from the list of actions to the answer area and arrange them in the correct order.

Actions

Resize VM1.

Redeploy VM1.

Stop VM1.

Resize the operating system disk.

Start VM1.

Resize volume C.

Answer Area

- A. Mastered
- B. Not Mastered

Answer: A

Explanation:

Actions

Resize VM1.

Redeploy VM1.

Stop VM1.

Resize the operating system disk.

Start VM1.

Resize volume C.

Answer Area

Stop VM1.

Resize the operating system disk.

Start VM1.

Resize volume C.

NEW QUESTION 101

- (Topic 3)

You have an on-premises Active Directory Domain Services (AD DS) domain that syncs with an Azure Active Directory (Azure AD) tenant

You have several Windows 10 devices that are Azure AD hybrid-joined.

You need to ensure that when users sign in to the devices, they can use Windows Hello for Business.

Which optional feature should you select in Azure AD Connect?

- A. Device writeback
- B. Group writeback
- C. Password writeback
- D. Directory extension attribute sync
- E. Azure AD app and attribute filtering

Answer: C

Explanation:

Reference:
<https://docs.microsoft.com/en-us/windows/security/identity-protection/hello-for-business/hello-hybrid-cert-trust-prereqs>

NEW QUESTION 104

- (Topic 3)

Your on-premises network contains an Active Directory domain named contoso.com. You have an Azure AD tenant. You plan to sync contoso.com with the Azure AD tenant by using Azure AD Connect cloud sync. You need to create an account that will be used by Azure AD Connect cloud sync. Which type of account should you create?

- A. system-assigned managed identity
- B. group managed service account (gMSA)
- C. user
- D. InetOrgPerson

Answer: C

NEW QUESTION 106

- (Topic 3)

Note: This question is part of a series of questions that present the same scenario. Each question in the series contains a unique solution that might meet the stated goals. Some question sets might have more than one correct solution, while others might not have a correct solution.

After you answer a question in this section, you will NOT be able to return to it. As a result, these questions will not appear in the review screen.

You are planning the deployment of DNS to a new network.

You have three internal DNS servers as shown in the following table.

Name	Location	IP address	Local DNS zone
Server1	Montreal	10.0.1.10	contoso.local
Server2	Toronto	10.0.2.10	east.contoso.local
Server3	Seattle	10.0.3.10	west.contoso.local

The contoso.local zone contains zone delegations for east.contoso.local and west.contoso.local. All the DNS servers use root hints.

You need to ensure that all the DNS servers can resolve the names of all the internal namespaces and internet hosts.

Solution: On Server2, you create a conditional forwarder for west.contoso.local. On Server3, you create a conditional forwarder for east.contoso.local.

Does this meet the goal?

- A. Yes
- B. No

Answer: B

NEW QUESTION 108

- (Topic 3)

Note: This question is part of a series of questions that present the same scenario. Each question in the series contains a unique solution that might meet the stated goals. Some question sets might have more than one correct solution, while others might not have a correct solution.

After you answer a question in this section, you will NOT be able to return to it. As a result, these questions will not appear in the review screen.

You are planning the deployment of DNS to a new network.

You have three internal DNS servers as shown in the following table.

Name	Location	IP address	Local DNS zone
Server1	Montreal	10.0.1.10	contoso.local
Server2	Toronto	10.0.2.10	east.contoso.local
Server3	Seattle	10.0.3.10	west.contoso.local

The contoso.local zone contains zone delegations for east.contoso.local and west.contoso.local. All the DNS servers use root hints.

You need to ensure that all the DNS servers can resolve the names of all the internal namespaces and internet hosts.

Solution: On Server2, you create a conditional forwarder for contoso.local and west.contoso.local. On Server3, you create a conditional forwarder for contoso.local and east.contoso.local.

Does this meet the goal?

- A. Yes
- B. No

Answer: B

NEW QUESTION 109

- (Topic 3)

You have an Azure Active Directory Domain Services (Azure AD DS) domain named contoso.com.

You need to provide an administrator with the ability to manage Group Policy Objects (GPOs). The solution must use the principle of least privilege.

To which group should you add the administrator?

- A. AAD DC Administrators
- B. Domain Admins
- C. Schema Admins
- D. Enterprise Admins
- E. Group Policy Creator Owners

Answer: B

Explanation:

Only the Domain Admins group and the Enterprise Admins group can fully manage GPOs. Members of the Group Policy Creator Owners group can create new GPOs but they can't link the GPOs to sites, the domain or OUs and they cannot manage existing GPOs.

NEW QUESTION 113

- (Topic 3)

Your network contains an Active Directory Domain Services (AD DS) domain. The domain contains the domain controllers shown in the following table.

Name	Description
DC1	PDC emulator, RID master, and global catalog server
DC2	Infrastructure master and domain naming master
DC3	Schema master
RODC1	Read-only domain controller (RODC)

You need to ensure that if an attacker compromises the computer account of RODC1, the attacker cannot view the Employee-Number AD DS attribute. Which partition should you modify?

- A. configuration
- B. global catalog
- C. domain

D. schema

Answer: D

NEW QUESTION 115

- (Topic 3)

Your network contains an Active Directory forest. The forest contains two domains named contoso.com and east.contoso.com and the servers shown in the following table.

Name	Domain	Configuration
DC1	contoso.com	Domain controller
Server1	contoso.com	Member server
DC2	east.contoso.com	Domain controller
Server2	east.contoso.com	Member server

Contoso.com contains a user named User1.
You add User1 to the built-in Backup Operators group in contoso.com. Which servers can User1 back up?

- A. DC1 only
- B. Server1 only
- C. DC1 and DC2 only
- D. DC1 and Server1 only
- E. DC1, DC2, Server1, and Server2

Answer: A

NEW QUESTION 118

- (Topic 3)

You have an Azure virtual machine named VM1 that runs Windows Server.
You need to configure the management of VM1 to meet the following requirements:

- Require administrators to request access to VM1 before establishing a Remote Desktop connection.
- Limit access to VM1 from specific source IP addresses.
- Limit access to VM1 to a specific management port.

What should you configure?

- A. a network security group (NSG)
- B. Azure Active Directory (Azure AD) Privileged Identity Management (PIM)
- C. Azure Front Door
- D. Microsoft Defender for Cloud

Answer: D

Explanation:

Reference:
<https://docs.microsoft.com/en-us/azure/defender-for-cloud>

NEW QUESTION 121

HOTSPOT - (Topic 3)

You have a server named Server1 that runs Windows Server and has the Hyper-V server role installed.
You need to limit which Hyper-V module cmdlets helpdesk users can use when administering Server 1 remotely.
You configure Just Enough Administration (JEA) and successfully build the role capabilities and session configuration files.
How should you complete the PowerShell command? To answer, select the appropriate options in the answer area.
NOTE: Each correct selection is worth one point.

Answer Area

Enter-PSession
New-PSessionConfigurationFile
Register-PSessionConfiguration

-Path .\HyperVJeaConfig

.ps1
.psm1
.psrc
.pssc

-Name 'HyperVJeaHelpDesk' -Force

- A. Mastered
- B. Not Mastered

Answer: A

Explanation:

Answer Area

Enter-PSession
New-PSessionConfigurationFile
Register-PSessionConfiguration

-Path .\HyperVJeaConfig

.ps1
.psm1
.psrc
.pssc

-Name 'HyperVJeaHelpDesk' -Force

NEW QUESTION 124

- (Topic 3)

Your network contains an on-premises Active Directory Domain Services (AD DS) domain named contoso.com. The domain contains three servers that run Windows Server and have the Hyper-V server role installed. Each server has a Switch Embedded Teaming (SET) team. You need to verify that Remote Direct Memory Access (RDMA) and all the required Windows Server settings are configured properly on each server. What should you use?

- A. Server Manager
- B. the validate-DCB cmdlet
- C. the Get-NetAdapter cmdlet
- D. Failover Cluster Manager

Answer: B

Explanation:

Reference: <https://github.com/Microsoft/Validate-DCB>

NEW QUESTION 125

- (Topic 3)

Your network contains an Active Directory Domain Services (AD DS) domain.

You plan to use Active Directory Administrative Center to create a new user named User1. Which two attributes are required to create User1? Each correct answer presents part of the solution.

NOTE: Each correct selection is worth one point.

- A. Password
- B. Profile path
- C. User SamAccountName logon
- D. Full name
- E. First name
- F. User UPN logon

Answer: AC

NEW QUESTION 127

- (Topic 3)

You have five file servers that run Windows Server.

You need to block users from uploading video files that have the .mov extension to shared folders on the file servers. All other types of files must be allowed. The solution must minimize administrative effort.

What should you create?

- A. a Dynamic Access Control central access policy
- B. a file screen
- C. a Dynamic Access Control central access rule
- D. a data loss prevention (DLP) policy

Answer: B

Explanation:

Reference:

<https://docs.microsoft.com/en-us/windows-server/storage/fsrm/file-screening-management>

NEW QUESTION 130

DRAG DROP - (Topic 3)

You have an on-premises server named Server 1 that runs Windows Server. Server 1 contains a file share named Share 1.

You have an Azure subscription. You perform the following actions:

- Deploy Azure File Sync
- Install the Azure File Sync agent on Server1.
- Register Server1 with Azure File Sync

You need to ensure that you can add Share1 as an Azure File Sync server endpoint. Which three actions should you perform in sequence? To answer, move the appropriate

actions from the list of actions to the answer area and arrange them in the correct order.

Actions

Deploy the Azure Connected Machine agent.

Deploy an Azure VPN gateway.

Create a private endpoint.

Create an Azure Storage account.

Create an Azure file share.

Create a sync group.

>

<

Answer Area

⬆

⬇

- A. Mastered
- B. Not Mastered

Answer: A

Explanation:

Actions

Deploy the Azure Connected Machine agent.

Deploy an Azure VPN gateway.

Create a private endpoint.

Create an Azure Storage account.

Create an Azure file share.

Create a sync group.

Answer Area

Create an Azure Storage account.

Create an Azure file share.

Create a sync group.

NEW QUESTION 134
HOTSPOT - (Topic 3)

You have on-premises servers that run Windows Server as shown in the following table.

Name	Local content
Server1	D:\Folder1\File1.docx
Server2	D:\Data1\File3.docx

You have an Azure file share named share1 that stores two files named File2.docx and File3.docx. You create an Azure File Sync sync group that includes the following endpoints:
? share
? D:\Folder1 on Server1
? D:\Data1 on Server2
For each of the following statements, select Yes if the statement is true. Otherwise, select No.
NOTE: Each correct selection is worth one point.

Statements	Yes	No
You can create a file named File2.docx in D:\Folder1 on Server1.	<input type="checkbox"/>	<input type="checkbox"/>
You can create a file named File1.docx in D:\Data1 on Server2.	<input type="checkbox"/>	<input type="checkbox"/>
File3.docx will sync to Server1.	<input type="checkbox"/>	<input type="checkbox"/>

- A. Mastered
- B. Not Mastered

Answer: A

Explanation:

Statements	Yes	No
You can create a file named File2.docx in D:\Folder1 on Server1.	<input checked="" type="checkbox"/>	<input type="checkbox"/>
You can create a file named File1.docx in D:\Data1 on Server2.	<input checked="" type="checkbox"/>	<input type="checkbox"/>
File3.docx will sync to Server1.	<input type="checkbox"/>	<input checked="" type="checkbox"/>

NEW QUESTION 137
HOTSPOT - (Topic 3)

You have an on-premises Active Directory Domain Services (AD DS) domain that syncs with an Azure Active Directory (Azure AD) tenant

You have an on-premises web app named WebApp1 that only supports Kerberos authentication. You need to ensure that users can access WebApp1 by using their Azure AD account. The solution must minimize administrative effort. What should you configure? To answer, select the appropriate options in the answer area. NOTE: Each correct selection is worth one point.

Answer Area

In Azure AD:

The Azure AD Application Proxy connector

The Azure AD Application Proxy service

Web Application Proxy

On-premises:

The Azure AD Application Proxy connector

The Azure AD Application Proxy service

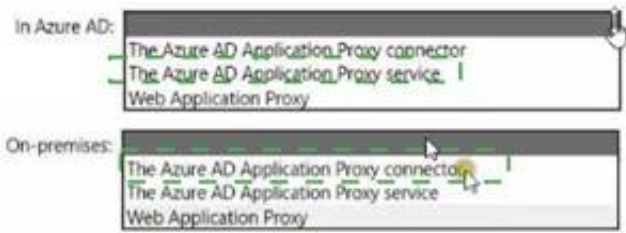
Web Application Proxy

- A. Mastered
- B. Not Mastered

Answer: A

Explanation:

Answer Area



NEW QUESTION 138

HOTSPOT - (Topic 3)

You have a Windows Server 2022 container host named Host1 and a container registry that contains the container images shown in the following table.

Name	Container base image OS version
Image1	Windows Server 2022
Image2	Windows Server 2019

You need to run the containers on Host1

Which isolation mode can you use for each image? To answer, select the appropriate options in the answer area.

NOTE: Each correct selection is worth one point.

Answer Area

Image1: ☐ Hyper-V isolation or process isolation
☐ Hyper-V isolation only
☐ Process isolation only
☒ Hyper-V isolation or process isolation

Image2: ☐ Hyper-V isolation only
☒ Hyper-V isolation only
☐ Process isolation only
☐ Hyper-V isolation or process isolation

Answer:

Answer Area

Image1: ☐ Hyper-V isolation or process isolation
☐ Hyper-V isolation only
☐ Process isolation only
☒ Hyper-V isolation or process isolation

Image2: ☐ Hyper-V isolation only
☒ Hyper-V isolation only
☐ Process isolation only
☐ Hyper-V isolation or process isolation

- A. Mastered
- B. Not Mastered

Answer: A

NEW QUESTION 141

HOTSPOT - (Topic 3)

Your network contains an Azure AD Domain Services domain named contoso.com.

You need to configure a password policy for the local user accounts on the Azure virtual machines joined to contoso.com.

What should you do? To answer, select the appropriate options in the answer area. NOTE: Each correct selection is worth one point.

Answer Area

Sign in by using a user account that is a member of the: ☐ AAD DC Administrators group
☒ AAD DC Administrators group
☐ Administrators group
☐ Domain Admins group

Use a Group Policy Object (GPO) linked to the: ☐ AADDC Users organizational unit (OU)
☐ AADDC Computers organizational unit (OU)
☒ AADDC Users organizational unit (OU)
☐ Computers container

Answer:

Answer Area

Sign in by using a user account that is a member of the:

AAD DC Administrators group

AAD DC Administrators group

Administrators group

Domain Admins group

Use a Group Policy Object (GPO) linked to the:

AADDC Users organizational unit (OU)

AADDC Computers organizational unit (OU)

AADDC Users organizational unit (OU)

Computers container

- A. Mastered
- B. Not Mastered

Answer: A

NEW QUESTION 143

- (Topic 3)

Your network contains an Active Directory Domain Services (AD DS) domain named contoso.com.

You need to identify which server is the PDC emulator for the domain. Solution: From a command prompt, you run netdom.exe query fsmo. Does this meet the goal?

- A. Yes
- B. No

Answer: A

Explanation:

Reference:

<https://activedirectorypro.com/how-to-check-fsmo-roles/>

NEW QUESTION 148

HOTSPOT - (Topic 3)

You have an Azure Active Directory Domain Services (Azure AD DS) domain. You create a new user named Admin1.

You need Admin1 to deploy custom Group Policy settings to all the computers in the domain. The solution must use the principle of least privilege.

What should you include in the solution? To answer, select the appropriate options in the answer area.

NOTE: Each correct selection is worth one point

Add Admin1 to the following group:

AAD DC Administrators

Domain Admins

Group Policy Creator Owners

Instruct Admin1 to apply the custom Group Policy settings by:

Creating a new Group Policy Object (GPO) and linking the GPO to the domain

Modifying AADDC Computers GPO

Modifying the default domain GPO

- A. Mastered
- B. Not Mastered

Answer: A

Explanation:

NEW QUESTION 150

- (Topic 3)

You have an Azure subscription that contains the storage accounts shown in the following table.

Name	Location	File share	Blob container
storage1	West US	share1	None
storage2	West US	share2	container2
storage3	Central US	share3	None
storage4	Central US	share4	container4

In the West US Azure region, you create a storage sync service named SyncA. You plan to create a sync group named GroupA.

What is the maximum number of cloud endpoints you can use with GroupA?

- A. 1
- B. 2

- C. 3
- D. 4

Answer: B

NEW QUESTION 154

HOTSPOT - (Topic 3)

You have an Azure subscription named sub1 and 500 on-premises virtual machines that run Windows Server. You plan to onboard the on-premises virtual machines to Azure Arc by running the Azure Arc deployment script. You need to create an identity that mil be used by the script to authenticate access to sub1. The solution must use the principle of least privilege. How should you complete the command? To answer, select the appropriate options in the answer area.
NOTE: Each correct selection is worth one point.

Answer Area

New-AzADAppCredential

New-AzADServicePrincipal

New-AzUserAssignedIdentity

-Displayname 'Arc-for-servers' -Role

Azure Connected Machine Onboarding

Virtual Machine Contributor

Virtual Machine User Login

- A. Mastered
- B. Not Mastered

Answer: A

Explanation:

Answer Area

New-AzADAppCredential

New-AzADServicePrincipal

New-AzUserAssignedIdentity

-Displayname 'Arc-for-servers' -Role

Azure Connected Machine Onboarding

Virtual Machine Contributor

Virtual Machine User Login

NEW QUESTION 158

- (Topic 3)

You have an on-premises Active Directory Domain Services (AD DS) domain that syncs with an Azure Active Directory (Azure AD) tenant. You plan deploy 100 new Azure virtual machines that will run Windows Server. You need to ensure that each new virtual machine is joined to the AD DS domain. What should you use?

- A. Azure AD Connect
- B. a Group Policy Object (GPO)
- C. an Azure Resource Manager (ARM) template
- D. an Azure management group

Answer: C

Explanation:

Reference:
<https://www.ludovicmedard.com/create-an-arm-template-of-a-virtual-machine-automatically-joined-to-a-domain/>

NEW QUESTION 162

- (Topic 3)

Your network contains an Active Domain Services (AD DS) forest. The forest contains three domains. Each domain contains 10 domain controllers. You plan to store a DNS zone in a custom active Directory partition. You need to create the Active Directory partition for the zone. The partition replicate to only four of the domain controllers. What should you use?

- A. Active Directory Sites and Services
- B. Active Directory Administrator Center
- C. dnscmd.exe
- D. DNS Manager

Answer: B

NEW QUESTION 163

DRAG DROP - (Topic 3)

Your network contains an Active Directory domain, a web app named App1, and a perimeter network. The perimeter network contains a server named Server1 that runs Windows Server. You plan to provide external access to App1. You need to implement the Web Application Proxy role service on Server1. Which role should you add to Server1, and which role should you add to the network? To answer, drag the appropriate roles to the correct targets. Each role may be used once, more than once, or not at all. You may need to drag the split bar between panes or scroll to view content.

Roles

Active Directory Certificate Services

Active Directory Federation Services

Network Policy and Access Services

Remote Access

Answer Area

Role on Server1:

Role on the network:

- A. Mastered
- B. Not Mastered

Answer: A

Explanation:

Roles

Active Directory Certificate Services

Active Directory Federation Services

Network Policy and Access Services

Remote Access

Answer Area

Role on Server1:

Remote Access

Role on the network:

Network Policy and Access Services

NEW QUESTION 167

- (Topic 3)

Note: This question is part of a series of questions that present the same scenario. Each question in the series contains a unique solution that might meet the stated goals. Some question sets might have more than one correct solution, while others might not have a correct solution.

After you answer a question in this section, you will NOT be able to return to it. As a result, these questions will not appear in the review screen.

You are planning the deployment of DNS to a new network.

You have three internal DNS servers as shown in the following table.

Name	Location	IP address	Local DNS zone
Server1	Montreal	10.0.1.10	contoso.local
Server2	Toronto	10.0.2.10	east.contoso.local
Server3	Seattle	10.0.3.10	west.contoso.local

The contoso.local zone contains zone delegations for east.contoso.local and west.contoso.local. All the DNS servers use root hints.

You need to ensure that all the DNS servers can resolve the names of all the internal namespaces and internet hosts.

Solution: You configure Server2 and Server3 to forward DNS requests to 10.0.1.10. Does this meet the goal?

- A. Yes
- B.

No

Answer: B

NEW QUESTION 169

- (Topic 3)

You have an on-premises server named Server1 that runs Windows Server. You have an Azure subscription that contains a virtual network named VNet1. You need to connect Server1 to VNet1 by using Azure Network Adapter. What should you use?

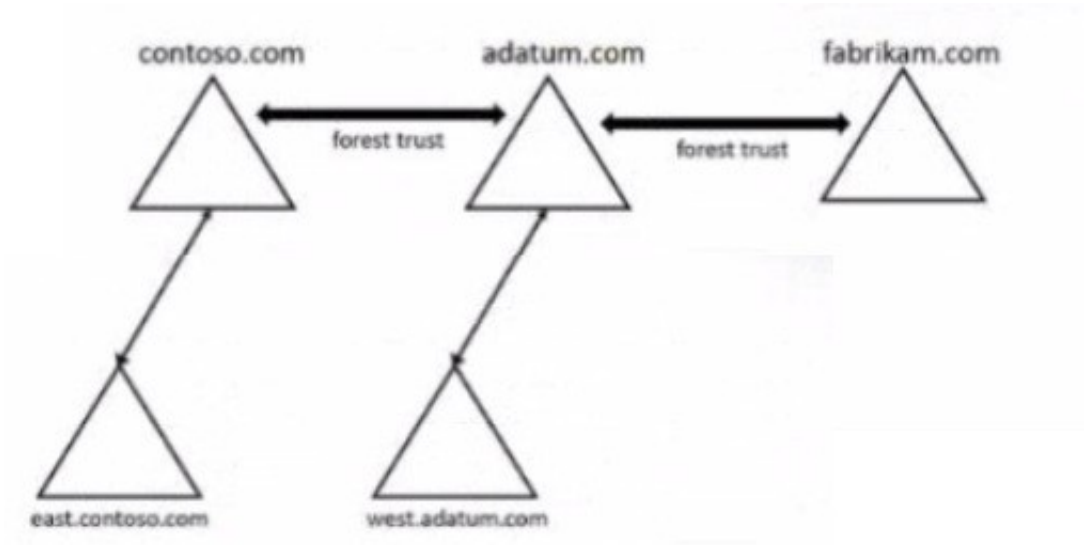
- A. Azure AD Connect
- B. Device Manager
- C. the Azure portal
- D. Windows Admin Center

Answer: D

NEW QUESTION 171

HOTSPOT - (Topic 3)

Your network contains three Active Directory Domain Services (AD DS) forest as shown in the following exhibit.



The network contains the users shown in the following table.

Name	Domain
User1	east.contoso.com
User2	fabrikam.com

The network contains the security groups shown in the following table.

Name	Type	Domain
Group1	Domain local	west.adatum.com
Group2	Universal	contoso.com
Group3	Universal	east.contoso.com

For each of the following statements, select Yes if the statement is true, Otherwise, select No.
NOTE: Each correct selection is worth one point.

Answer Area

Statements	Yes	No
You can add User1 to Group1.	<input type="radio"/>	<input type="radio"/>
You can add User2 to Group3.	<input type="radio"/>	<input type="radio"/>
You can grant Group2 permissions to the resources in the fabrikam.com domain.	<input type="radio"/>	<input type="radio"/>

- A. Mastered
- B. Not Mastered

Answer: A

Explanation:

- (Topic 3)

You have a server named Server1 that hosts Windows containers. You plan to deploy an application that will have multiple containers. Each container will be You need to create a Docker network that supports the deployment of the application. Which type of network should you create?

- A. transparent
- B. I2bridge
- C. NAT
- D. I2tunnel

Answer: A

Explanation:

Reference:

<https://docs.microsoft.com/en-us/virtualization/windowscontainers/container-networking/network-drivers-topologies>

NEW QUESTION 175

- (Topic 3)

Your network contains an Active Directory Domain Services (AD DS) forest. The forest contains three Active Directory sites named Site1, Site2, and Site3. Each site contains two domain controllers. The sites are connected by using DEFAULTIPSITELINK.

You open a new branch office that contains only client computers.

You need to ensure that the client computers in the new office are primarily authenticated by the domain controllers in Site1.

Solution: You configure the Try Next Closest Site Group Policy Object (GPO) setting in a GPO that is linked to Site1.

Does this meet the goal?

- A. Yes
- B. No

Answer: B

NEW QUESTION 180

- (Topic 3)

You have a server named Server1 that runs Windows Server and contains two drives named C and D. Server1 hosts multiple file shares.

You enable Data Deduplication on drive D and select the General purpose file server workload.

You need to minimize the space consumed by files that were recently modified or deleted. What should you do?

- A. Run the set-dedupvolume cmdlet and configure the scrubbing job.
- B. Run the Set-DedupSchedule Cmdlet and configure a GarbageCollection job.
- C. Run the set-Dedupvoiume cmdlet and configure the InputOutputScale settings.
- D. Run the Set-DedupSchedule cmdlet and configure the optimization job.

Answer: B

NEW QUESTION 184

HOTSPOT - (Topic 3)

You have an on-premises server named Server1 that runs Windows Server and has internet connectivity.

You have an Azure subscription.

You need to monitor Server1 by using Azure Monitor.

Which resources should you create in the subscription, and what should you install on Server1? To answer, select the appropriate options in the answer area.

NOTE: Each correct selection is worth one point.

In the subscription, create:

- | |
|---|
| <input type="checkbox"/> An Azure Files storage account |
| <input type="checkbox"/> A Log Analytics workspace |
| <input type="checkbox"/> An Azure SQL database and a data collection rule |
| <input type="checkbox"/> An Azure Blob Storage account and a data collection rule |

On Server1, install:

- | |
|--|
| <input type="checkbox"/> The Azure Monitor agent |
| <input type="checkbox"/> The Analytics gateway |
| <input type="checkbox"/> The Device Health Attestation server role |

- A. Mastered
- B. Not Mastered

Answer: A

Explanation:

NEW QUESTION 188

HOTSPOT - (Topic 3)

Your network contains two Active Directory Domain Services (AD DS) forests named contoso.com and fabrikam.com. A two-way forest trust exists between the forests. Each forest contains a single domain. The domains contain the servers shown in the following table.

Name	Domain	Description
Server1	contoso.com	Hosts a Windows Admin Center gateway
Server2	fabrikam.com	Hosts resources that will be managed remotely by using Windows Admin Center on Server1

You need to configure resources based constrained delegation so that the users In contoso.com can use Windows Admin Center on Server) to connect to Server? How should you complete the command? To answer, select the appropriate options in the answer area.

NOTE: Each correct selection is worth one point.

Answer Area

Set-ADComputer -Identity

(Get-ADComputer server1.contoso.com)

(Get-ADComputer server2.fabrikam.com)

(Get-ADGroup 'Contoso\Domain Users')

(Get-ADGroup 'Fabrikam\Domain Users')

-PrincipalsAllowedToDelegateToAccount

(Get-ADComputer server1.contoso.com)

(Get-ADComputer server2.fabrikam.com)

(Get-ADGroup 'Contoso\Domain Users')

(Get-ADGroup 'Fabrikam\Domain Users')

- A. Mastered
- B. Not Mastered

Answer: A

Explanation:

Answer Area

Set-ADComputer -Identity

(Get-ADComputer server1.contoso.com)

(Get-ADComputer server2.fabrikam.com)

(Get-ADGroup 'Contoso\Domain Users')

(Get-ADGroup 'Fabrikam\Domain Users')

-PrincipalsAllowedToDelegateToAccount

(Get-ADComputer server1.contoso.com)

(Get-ADComputer server2.fabrikam.com)

(Get-ADGroup 'Contoso\Domain Users')

(Get-ADGroup 'Fabrikam\Domain Users')

NEW QUESTION 193

HOTSPOT - (Topic 3)

Your on-premises network contains an Active Directory domain named contoso.com and 500 servers that run Windows Server. All the servers are Azure Arc-enabled and joined to contoso.com.

You need to implement PowerShell Desired State Configuration (DSC) on all the servers. The solution must minimize administrative effort.

Where should you store the DSC scripts, and what should you use to apply DSC to the servers? To answer, select the appropriate options in the answer area.

NOTE: Each correct selection is worth one point.

Answer Area

Store in:

An Azure Automation account

An Azure App Configuration store

An Azure Automation account

An Azure Policy definition

Use:

Guest configuration in Azure Policy

A Group Policy Object (GPO) in Active Directory Domain Services (AD DS)

Azure virtual machine extensions

Guest configuration in Azure Policy

- A. Mastered
 B. Not Mastered

Answer: A

Explanation:

Answer Area

Store in:

- An Azure Automation account
- An Azure App Configuration store
- An Azure Automation account
- An Azure Policy definition

Use:

- Guest configuration in Azure Policy
- A Group Policy Object (GPO) in Active Directory Domain Services (AD DS)
- Azure virtual machine extensions
- Guest configuration in Azure Policy

NEW QUESTION 197

HOTSPOT - (Topic 2)

You need to configure Azure File Sync to meet the file sharing requirements. What should you do? To answer, select the appropriate options in the answer area.

NOTE Each correct selection is worth one point.

Answer Area

Minimum number of sync groups to create:

1
2
3
4

Minimum number of Storage Sync Services to create:

1
2
3
4

- A. Mastered
 B. Not Mastered

Answer: A

Explanation:

Answer Area

Minimum number of sync groups to create:

1
2
3
4

Minimum number of Storage Sync Services to create:

1
2
3
4

NEW QUESTION 199

HOTSPOT - (Topic 2)

You need to configure network communication between the Seattle and New York offices. The solution must meet the networking requirements.

What should you configure? To answer, select the appropriate options in the answer area. NOTE: Each correct selection is worth one point.

On a Virtual WAN hub:

An ExpressRoute gateway
A virtual network gateway
An ExpressRoute circuit connection

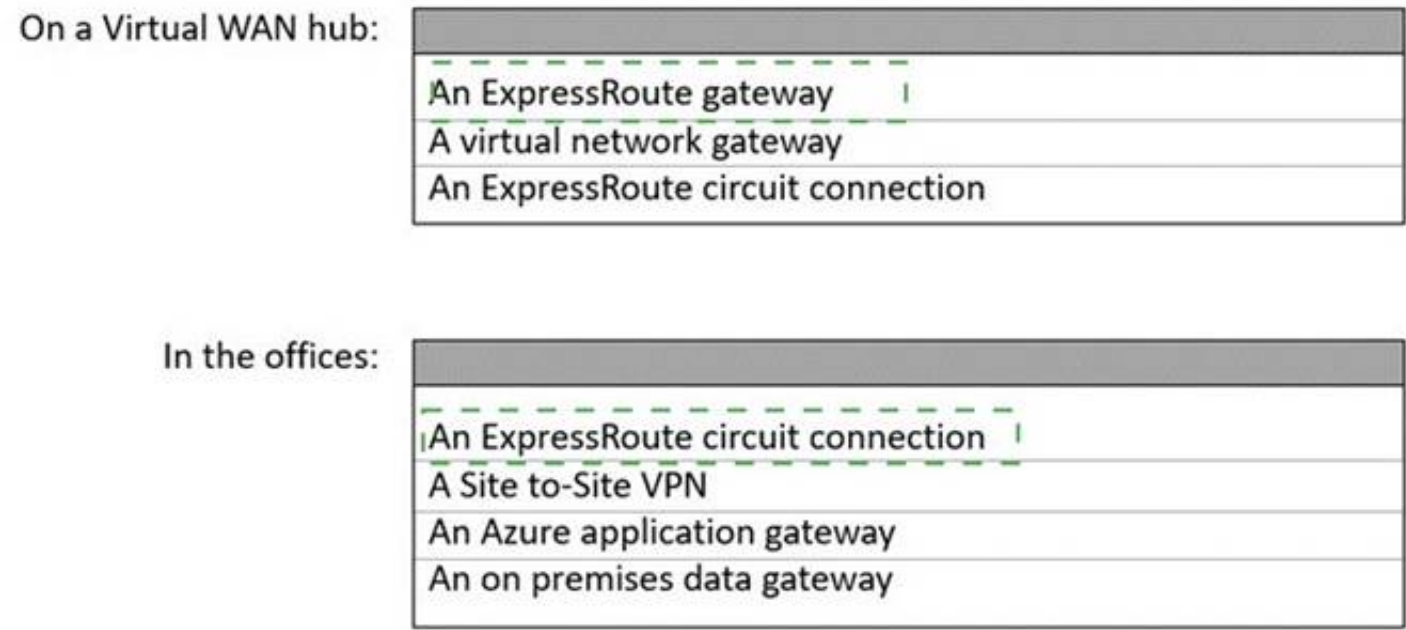
In the offices:

An ExpressRoute circuit connection
A Site-to-Site VPN
An Azure application gateway
An on-premises data gateway

- A. Mastered
 B. Not Mastered

Answer: A

Explanation:



NEW QUESTION 201

- (Topic 2)
You need to implement a name resolution solution that meets the networking requirements. Which two actions should you perform? Each correct answer presents part of the solution.
NOTE: Each correct selection is worth one point

- A. Create an Azure private DNS zone named corp.fabhkam.com.
- B. Create a virtual network link in the coip.fabnkam.c om Azure private DNS zone.
- C. Create an Azure DNS zone named corp.fabrikam.com.
- D. Configure the DNS Servers settings for Vnet1.
- E. Enable autoregistration in the corp.fabnkam.com Azure private DNS zone.
- F. On DC3, install the DNS Server role.
- G. Configure a conditional forwarder on DC3.

Answer: DF

Explanation:
Virtual machines in an Azure virtual network receive their DNS configuration from the DNS settings configured on the virtual network. You need to configure the Azure virtual network to use DC3 as the DNS server. Then all virtual machines in the virtual network will use DC3 and their DNS server.

NEW QUESTION 202

- (Topic 2)
You are planning the implementation Azure Arc to support the planned changes. You need to configure the environment to support configuration management policies. What should you do?

- A. Hybrid Azure AD join all the servers.
- B. Create a hybrid runbook worker m Azure Automation.
- C. Deploy the Azure Connected Machine agent to all the servers.
- D. Deploy the Azure Monitor agent to all the servers.

Answer: C

Explanation:
Reference:
<https://docs.microsoft.com/en-us/azure/azure-arc/servers/plan-at-scale-deployment>

NEW QUESTION 204

- (Topic 2)
What should you implement for the deployment of DC3?

- A. Azure Active Directory Domain Services (Azure AD DS)
- B. Azure AD Application Proxy
- C. an Azure virtual machine
- D. an Azure AD administrative unit

Answer: C

Explanation:
Create a domain controller named dc3.corp.fabrikam.com in Vnet1.
In a hybrid network, you can configure Azure virtual machines as domain controllers. The domain controllers in Azure communicate with the on-premises domain controllers in the same way that on-premises domain controllers communicate with each other.

NEW QUESTION 207

.....

Thank You for Trying Our Product

We offer two products:

1st - We have Practice Tests Software with Actual Exam Questions

2nd - Questons and Answers in PDF Format

AZ-800 Practice Exam Features:

- * AZ-800 Questions and Answers Updated Frequently
- * AZ-800 Practice Questions Verified by Expert Senior Certified Staff
- * AZ-800 Most Realistic Questions that Guarantee you a Pass on Your FirstTry
- * AZ-800 Practice Test Questions in Multiple Choice Formats and Updatesfor 1 Year

100% Actual & Verified — Instant Download, Please Click
[Order The AZ-800 Practice Test Here](#)