

# Cisco

## Exam Questions 200-301

Cisco Certified Network Associate



#### NEW QUESTION 1

Which design element is a best practice when deploying an 802.11b wireless infrastructure?

- A. disabling TPC so that access points can negotiate signal levels with their attached wireless devices.
- B. setting the maximum data rate to 54 Mbps on the Cisco Wireless LAN Controller
- C. allocating nonoverlapping channels to access points that are in close physical proximity to one another
- D. configuring access points to provide clients with a maximum of 5 Mbps

**Answer: C**

#### NEW QUESTION 2

What are two southbound APIs? (Choose two )

- A. OpenFlow
- B. NETCONF
- C. Thrift
- D. CORBA
- E. DSC

**Answer: CD**

#### NEW QUESTION 3

Which set of action satisfy the requirement for multifactor authentication?

- A. The user swipes a key fob, then clicks through an email link
- B. The user enters a user name and password, and then clicks a notification in an authentication app on a mobile device
- C. The user enters a PIN into an RSA token, and then enters the displayed RSA key on a login screen
- D. The user enters a user name and password and then re-enters the credentials on a second screen

**Answer: A**

#### NEW QUESTION 4

Which two capacities of Cisco DNA Center make it more extensible? (Choose two)

- A. adapters that support all families of Cisco IOS software
- B. SDKs that support interaction with third-party network equipment
- C. customized versions for small, medium, and large enterprises
- D. REST APIs that allow for external applications to interact natively with Cisco DNA Center
- E. modular design that is upgradable as needed

**Answer: BD**

#### NEW QUESTION 5

An email user has been lured into clicking a link in an email sent by their company's security organization. The webpage that opens reports that it was safe but the link could have contained malicious code. Which type of security program is in place?

- A. Physical access control
- B. Social engineering attack
- C. brute force attack
- D. user awareness

**Answer: B**

#### NEW QUESTION 6

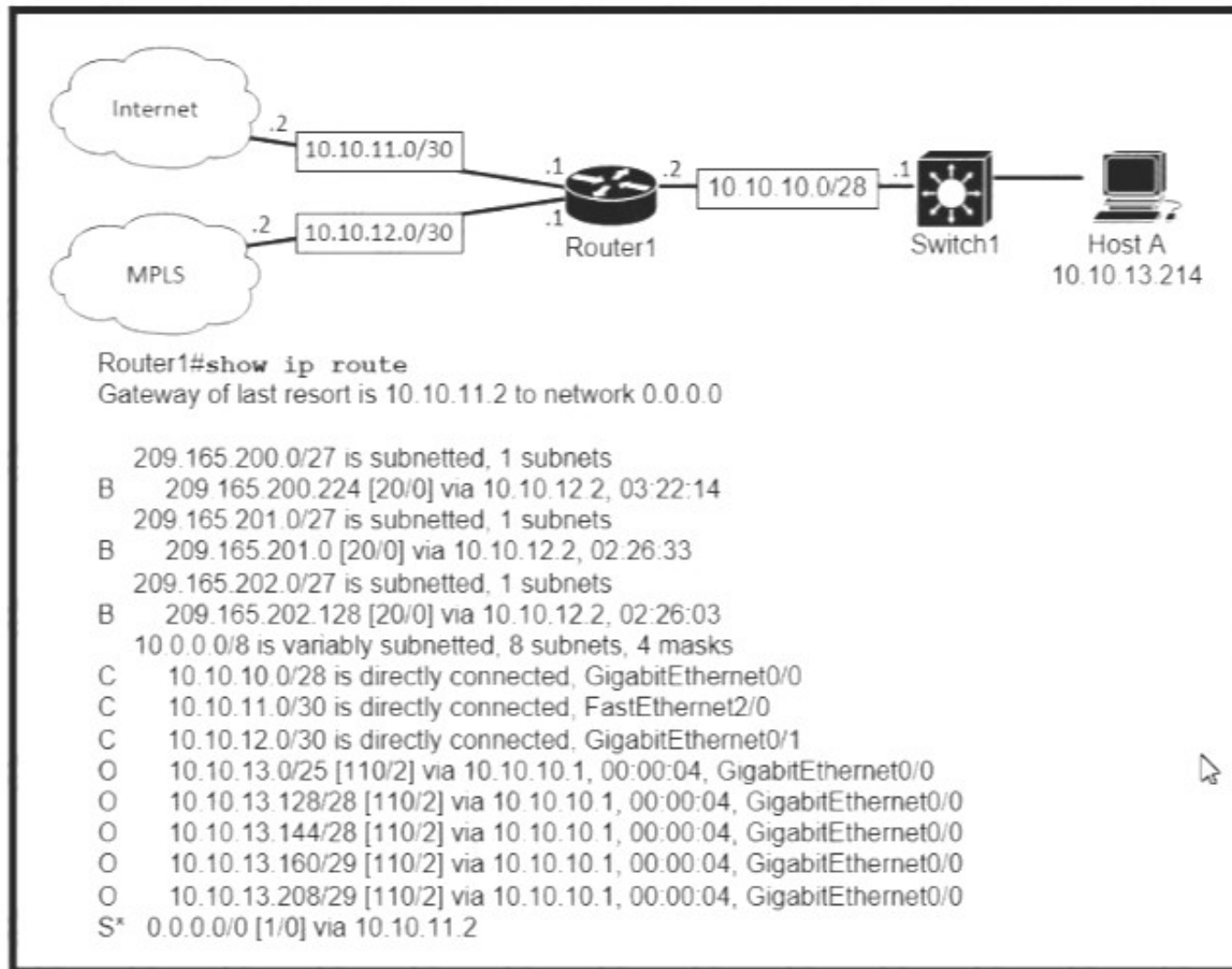
Which type of wireless encryption is used for WPA2 in preshared key mode?

- A. TKIP with RC4
- B. RC4
- C. AES-128
- D. AES-256

**Answer: D**

#### NEW QUESTION 7

Refer to the exhibit.



Which prefix does Router 1 use for traffic to Host A?

- A. 10.10.10.0/28
- B. 10.10.13.0/25
- C. 10.10.13.144/28
- D. 10.10.13.208/29

**Answer: C**

#### NEW QUESTION 8

How does HSRP provide first hop redundancy?

- A. It load-balances traffic by assigning the same metric value to more than one route to the same destination in the IP routing table.
- B. It load-balances Layer 2 traffic along the path by flooding traffic out all interfaces configured with the same VLAN.
- C. It forwards multiple packets to the same destination over different routed links in the data path
- D. It uses a shared virtual IP and a virtual MAC address to a group of routers that serve as the default gateway for hosts on a LAN

**Answer: C**

#### NEW QUESTION 9

in Which way does a spine and-leaf architecture allow for scalability in a network when additional access ports are required?

- A. A spine switch and a leaf switch can be added with redundant connections between them
- B. A spine switch can be added with at least 40 GB uplinks
- C. A leaf switch can be added with a single connection to a core spine switch.
- D. A leaf switch can be added with connections to every spine switch

**Answer: D**

#### NEW QUESTION 10

Refer to the exhibit.

```

ip arp inspection vlan 2
interface fastethernet 0/1
 switchport mode access
 switchport access vlan 2
  
```

What is the effect of this configuration?

- A. The switch port interface trust state becomes untrusted
- B. The switch port remains administratively down until the interface is connected to another switch
- C. Dynamic ARP inspection is disabled because the ARP ACL is missing
- D. The switch port remains down until it is configured to trust or untrust incoming packets

**Answer: A**

#### NEW QUESTION 10

A frame that enters a switch fails the Frame Check Sequence. Which two interface counters are incremented? (Choose two)

- A. runts
- B. giants
- C. frame
- D. CRC
- E. input errors

**Answer:** DE

#### NEW QUESTION 15

Which output displays a JSON data representation?

- ☐

```
{
  "response": {
    "taskId": {},
    "url": "string"
  },
  "version": "string"
}
```
- ☐

```
{
  "response": {
    "taskId": {},
    "url": "string"
  };
  "version": "string"
}
```
- ☐

```
{
  "response"- {
    "taskId"- {},
    "url"- "string"
  },
  "version"- "string"
}
```
- ☐

```
{
  "response": {
    "taskId": {},
    "url": "string"
  },
  "version": "string"
}
```

- A. Option A
- B. Option B
- C. Option C
- D. Option D

**Answer:** C

#### NEW QUESTION 18

What is the primary different between AAA authentication and authorization?

- A. Authentication verifies a username and password, and authorization handles the communication between the authentication agent and the user database.
- B. Authentication identifies a user who is attempting to access a system, and authorization validates the users password
- C. Authentication identifies and verifies a user who is attempting to access a system, and authorization controls the tasks the user can perform.
- D. Authentication controls the system processes a user can access and authorization logs the activities the user initiates

**Answer:** C

#### NEW QUESTION 22

Router A learns the same route from two different neighbors, one of the neighbor routers is an OSPF neighbor and the other is an EIGRP neighbor. What is the administrative distance of the route that will be installed in the routing table?

- A. 20
- B. 90
- C. 110
- D. 115

**Answer:** B

#### NEW QUESTION 26

Refer to the exhibit.

```
R2#show ip nat translations
Pro Inside global      Inside local  Outside local  Outside global
tcp 172.23.104.3:43268 10.4.4.4:43268 172.23.103.10:23 172.23.103.10:23
tcp 172.23.104.4:45507 10.4.4.5:45507 172.23.103.10:80 172.23.103.10:80
```

An engineer configured NAT translations and has verified that the configuration is correct. Which IP address is the source IP?

- A. 10.4.4.4
- B. 10.4.4.5
- C. 172.23.103.10
- D. 172.23.104.4

Answer: C

NEW QUESTION 30

Drag and drop the AAA functions from the left onto the correct AAA services on the right

records user activities

restricts the services that are available to a user

identifies the user

controls the actions that a user can perform

provides analytical information for the network administrator

verifies the password associated with a user

Authentication

Authorization

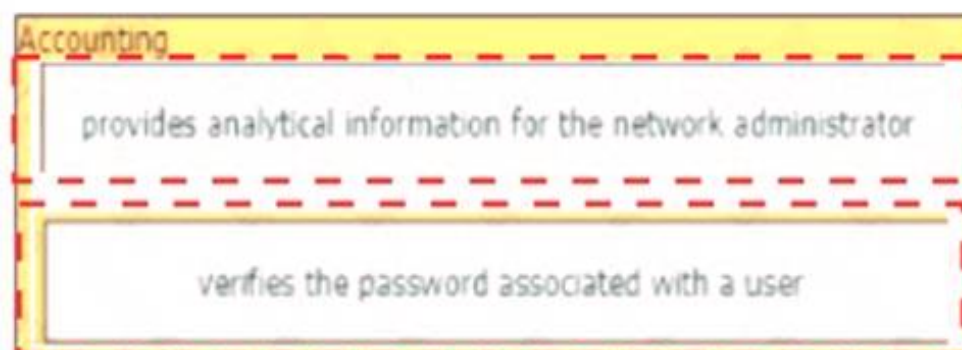
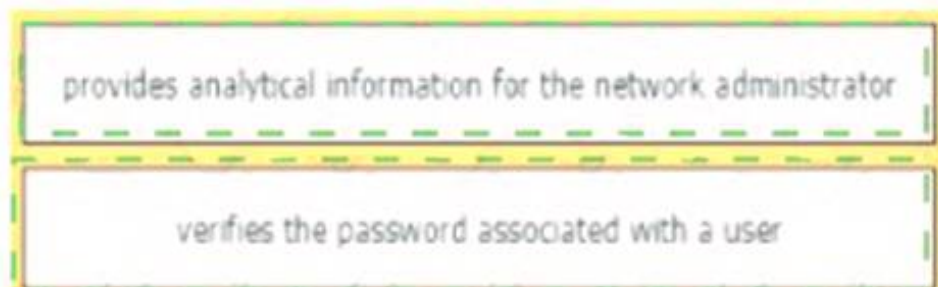
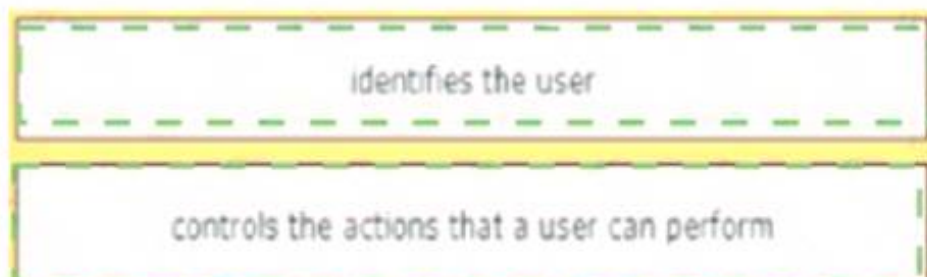
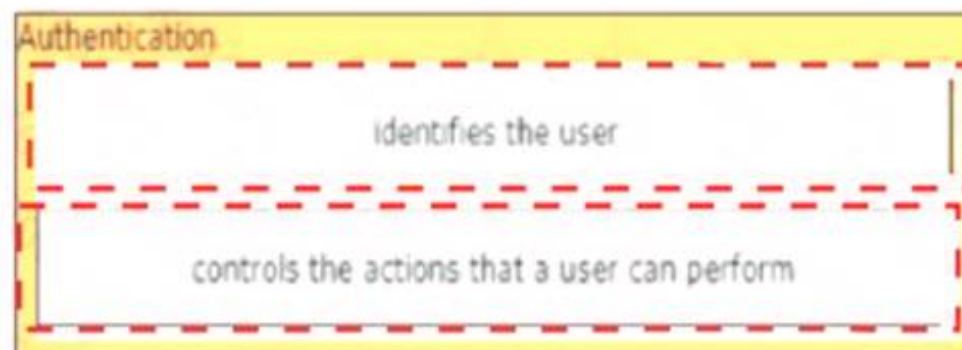
Accounting

- A. Mastered
- B. Not Mastered

Answer: A

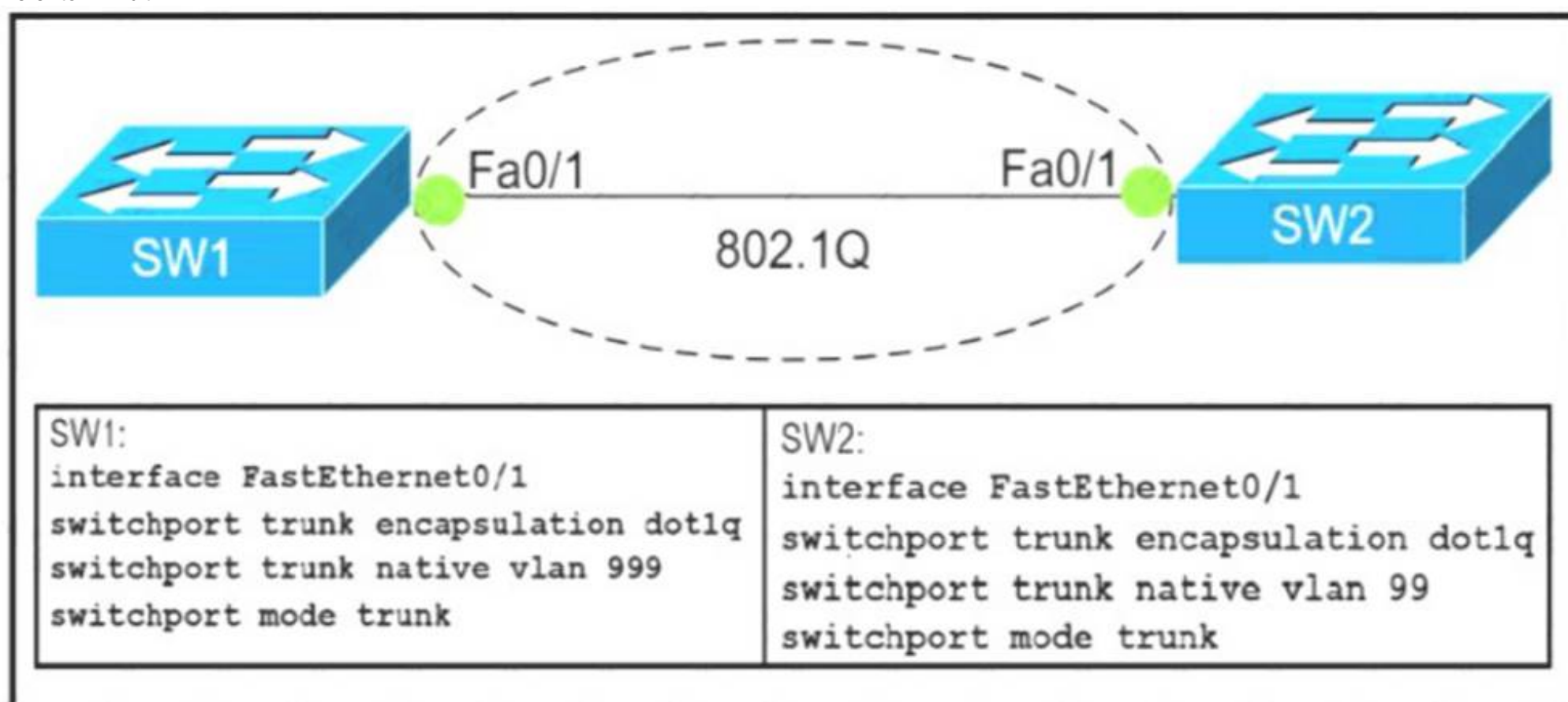
Explanation:





### NEW QUESTION 33

Refer to Exhibit.



Which action do the switches take on the trunk link?

- A. The trunk does not form and the ports go into an err-disabled status.
- B. The trunk forms but the mismatched native VLANs are merged into a single broadcast domain.
- C. The trunk does not form, but VLAN 99 and VLAN 999 are allowed to traverse the link.
- D. The trunk forms but VLAN 99 and VLAN 999 are in a shutdown state.

**Answer: C**

### NEW QUESTION 36

Which command is used to specify the delay time in seconds for LLDP to initialize on any interface?

- A. lldp timer
- B. lldp holdtimt
- C. lldp reinit

D. lldp tlv-select

**Answer:** D

**NEW QUESTION 40**

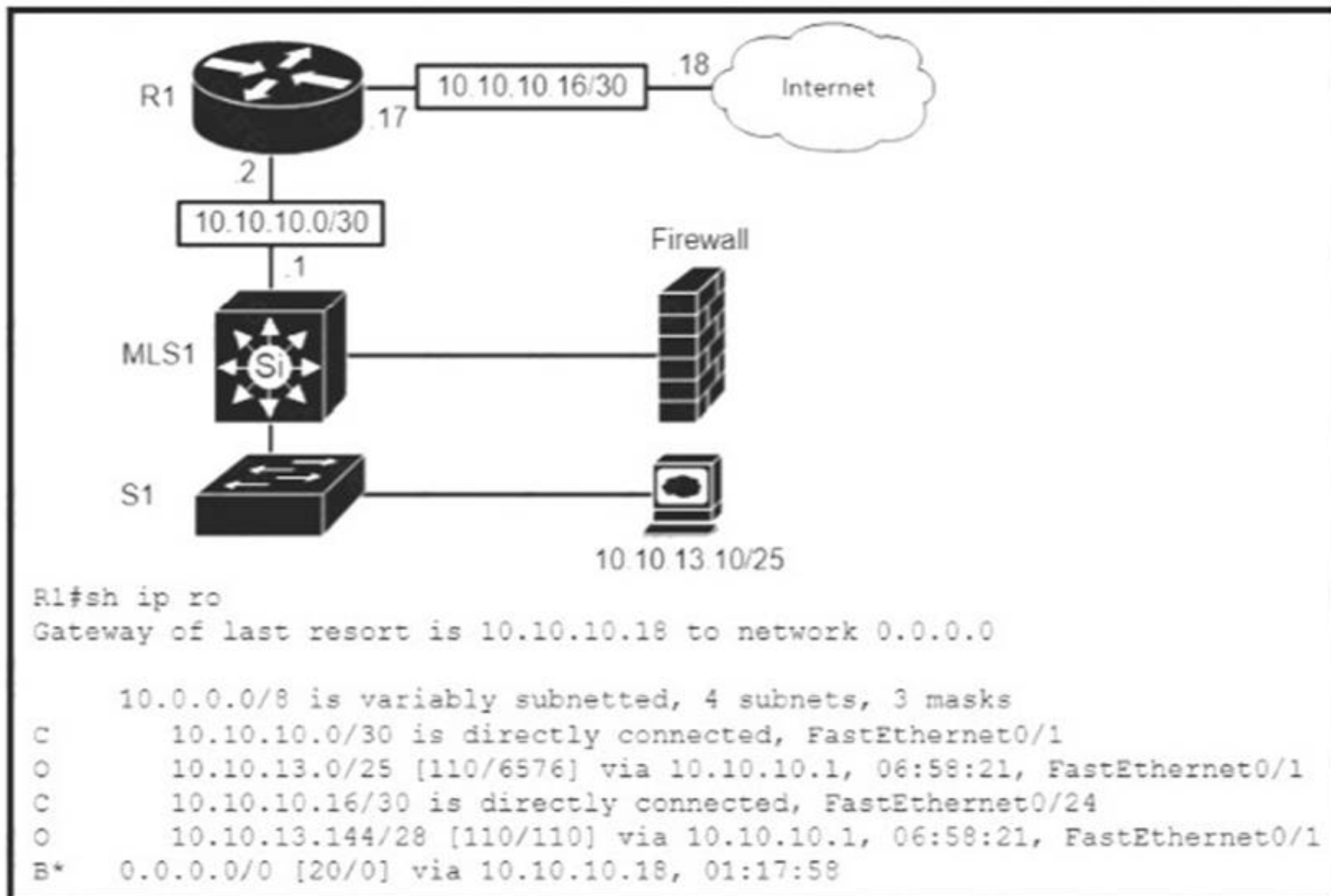
Which QoS Profile is selected in the GUI when configuring a voice over WLAN deployment?

- A. Bronze
- B. Platinum
- C. Silver
- D. Gold

**Answer:** B

**NEW QUESTION 42**

Refer to the exhibit.



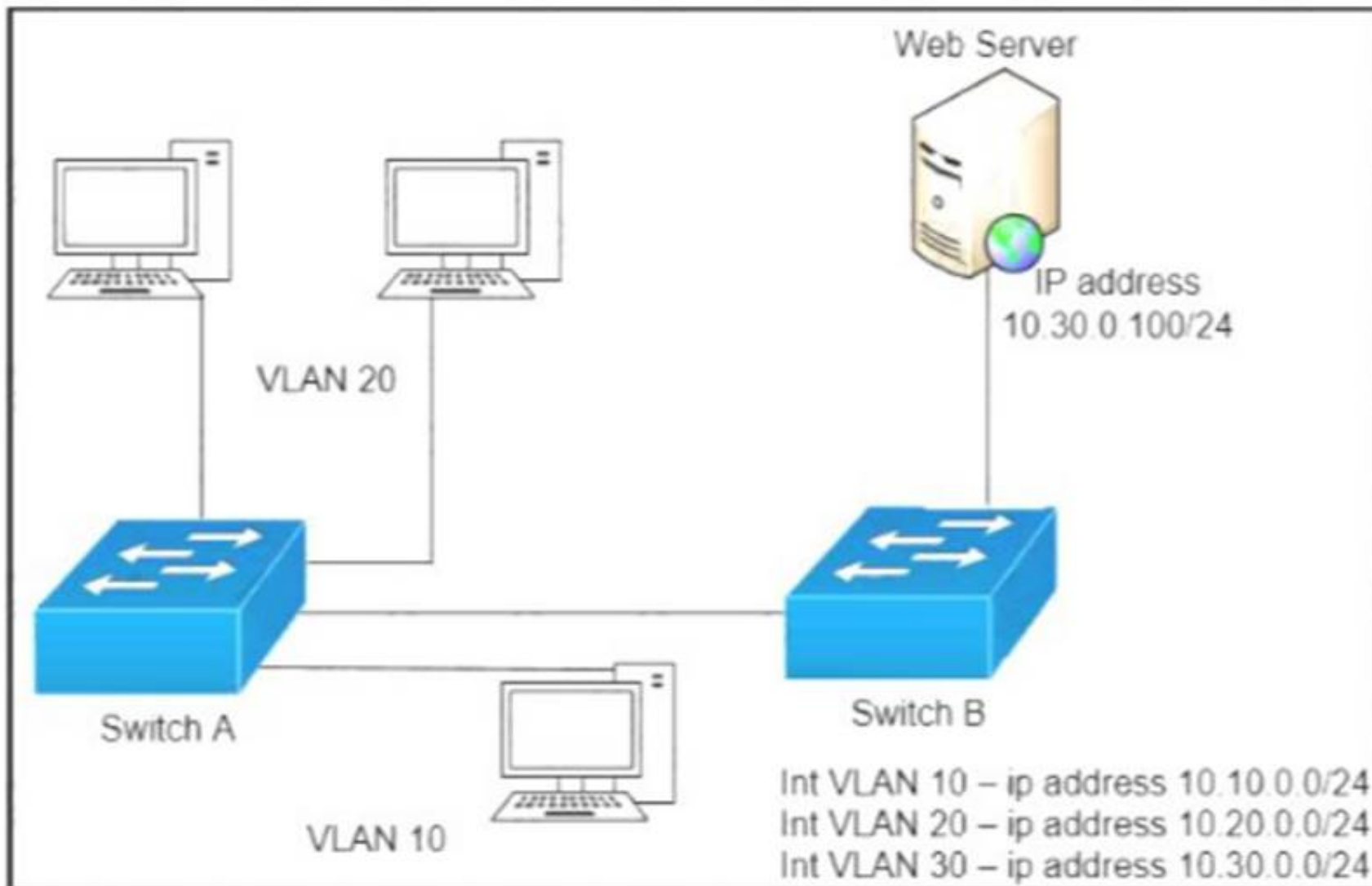
Which type of route does R1 use to reach host 10.10.13.10/32?

- A. floating static route
- B. host route
- C. default route
- D. network route

**Answer:** D

**NEW QUESTION 47**

Refer to the exhibit.



A network engineer must block access for all computers on VLAN 20 to the web server via HTTP. All other computers must be able to access the web server. Which configuration when applied to switch A accomplishes this task?

- ☐

```
config t
ip access-list extended wwwblock
deny tcp any host 10.30.0.100 eq 80
int vlan 10
ip access-group wwwblock in
```
- ☐

```
config t
ip access-list extended wwwblock
deny tcp any host 10.30.0.100 eq 80
permit ip any any
int vlan 20
ip access-group wwwblock in
```
- ☐

```
config t
ip access-list extended wwwblock
permit ip any any
deny tcp any host 10.30.0.100 eq 80
int vlan 30
ip access-group wwwblock in
```
- ☐

```
config t
ip access-list extended wwwblock
permit ip any any
deny tcp any host 10.30.0.100 eq 80
int vlan 20
ip access-group wwwblock in
```

- A. Option A
- B. Option B
- C. Option C
- D. Option D

**Answer: B**

#### NEW QUESTION 49

Two switches are connected and using Cisco Dynamic Trunking Protocol. SW1 is set to Dynamic Desirable. What is the result of this configuration?

- A. The link is in a down state.
- B. The link is in an error disabled state.
- C. The link becomes an access port.
- D. The link becomes a trunk port.

**Answer: D**



#### NEW QUESTION 50

Which mode allows access points to be managed by Cisco Wireless LAN Controllers?

- A. autonomous
- B. lightweight
- C. bridge
- D. mobility express

**Answer:** B

#### NEW QUESTION 51

Which command automatically generates an IPv6 address from a specified IPv6 prefix and MAC address of an interface?

- A. ipv6 address dhcp
- B. ipv6 address 2001:DB8:5:112::/64 eui-64
- C. ipv6 address autoconfig
- D. ipv6 address 2001:DB8:5:112::2/64 link-local

**Answer:** C

#### NEW QUESTION 56

Which two outcomes are predictable behaviors for HSRP? (Choose two)

- A. The two routers share a virtual IP address that is used as the default gateway for devices on the LAN.
- B. The two routers negotiate one router as the active router and the other as the standby router
- C. Each router has a different IP address both routers act as the default gateway on the LAN, and traffic is load balanced between them.
- D. The two routers synchronize configurations to provide consistent packet forwarding
- D. The two routers share the same IP address, and default gateway traffic is load-balanced between them

**Answer:** AB

#### NEW QUESTION 57

Which 802.11 frame type is association response?

- A. management
- B. protected frame
- C. control
- D. action

**Answer:** B

#### NEW QUESTION 61

Which two tasks must be performed to configure NTP to a trusted server in client mode on a single network device? (Choose two)

- A. Enable NTP authentication.
- B. Verify the time zone.
- C. Disable NTP broadcasts
- D. Specify the IP address of the NTP server
- E. Set the NTP server private key

**Answer:** DE

#### NEW QUESTION 64

Which result occurs when PortFast is enabled on an interface that is connected to another switch?

- A. Spanning tree may fail to detect a switching loop in the network that causes broadcast storms
- B. VTP is allowed to propagate VLAN configuration information from switch to switch automatically.
- C. Root port choice and spanning tree recalculation are accelerated when a switch link goes down
- D. After spanning tree converges PortFast shuts down any port that receives BPDUs.

**Answer:** A

#### NEW QUESTION 67

When a floating static route is configured, which action ensures that the backup route is used when the primary route fails?

- A. The floating static route must have a higher administrative distance than the primary route so it is used as a backup
- B. The administrative distance must be higher on the primary route so that the backup route becomes secondary.
- C. The floating static route must have a lower administrative distance than the primary route so it is used as a backup
- D. The default-information originate command must be configured for the route to be installed into the routing table

**Answer:** A

#### NEW QUESTION 69

Drag and drop the descriptions of file-transfer protocols from the left onto the correct protocols on the right.

provides reliability when loading an IOS image upon boot up
does not require user authentication
uses port 69
uses ports 20 and 21
uses TCP
uses UDP

FTP
TFTP

- A. Mastered
- B. Not Mastered

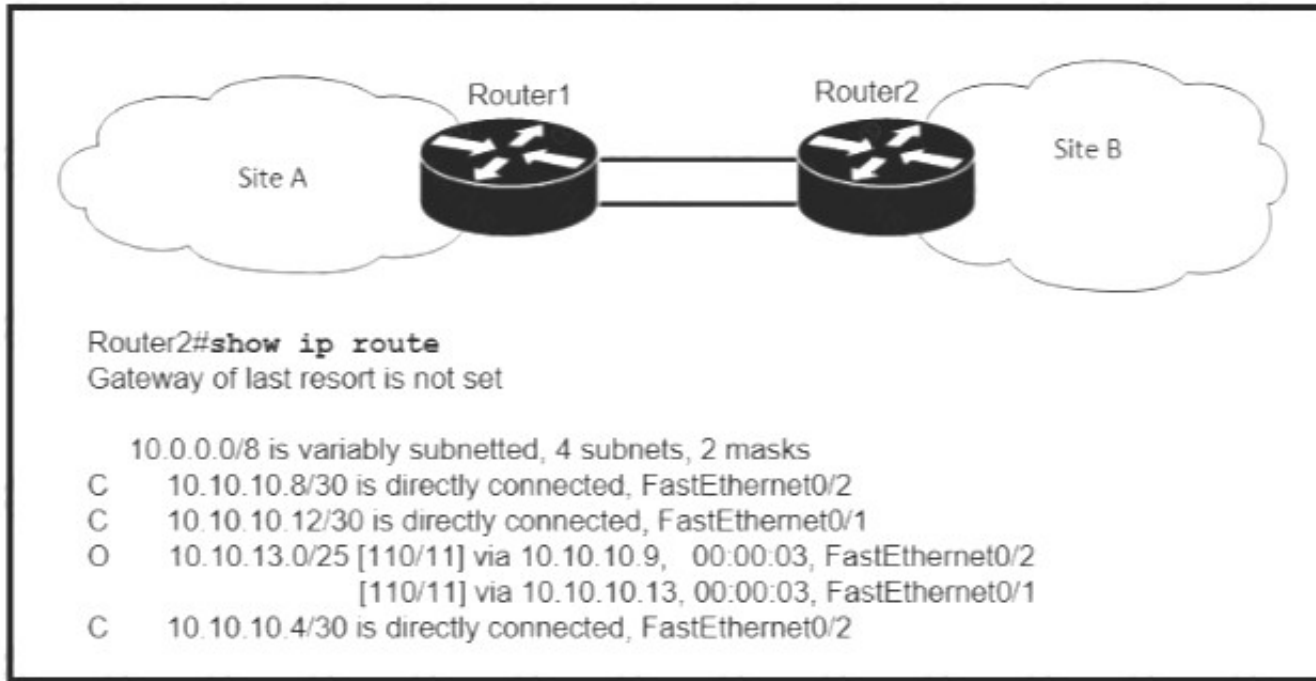
Answer: A

Explanation:

provides reliability when loading an IOS image upon boot up
does not require user authentication
uses port 69
uses ports 20 and 21
uses TCP
uses UDP

FTP
provides reliability when loading an IOS image upon boot up
uses ports 20 and 21
uses TCP
TFTP
does not require user authentication
uses port 69
uses UDP

NEW QUESTION 72  
Refer to the exhibit.



If OSPF is running on this network, how does Router 2 handle traffic from Site B to 10.10.13/25 at Site A?

- A. It sends packets out of interface Fa0/2 only.
- B. It sends packets out of interface Fa0/1 only.
- C. It cannot send packets to 10.10.13 128/25
- D. It load-balances traffic out of Fa0/1 and Fa0/2

Answer: D

#### NEW QUESTION 75

Drag drop the descriptions from the left onto the correct configuration-management technologies on the right.

fundamental configuration elements are stored in a manifest

uses TCP port 10002 for configuration push jobs

uses Ruby for fundamental configuration elements

uses SSH for remote device communication

uses TCP 8140 for communication

uses YAML for fundamental configuration elements

Ansible

Chef

Puppet

- A. Mastered
- B. Not Mastered

Answer: A

Explanation:

fundamental configuration elements are stored in a manifest

uses TCP port 10002 for configuration push jobs

uses Ruby for fundamental configuration elements

uses SSH for remote device communication

uses TCP 8140 for communication

uses YAML for fundamental configuration elements

#### Ansible

uses TCP port 10002 for configuration push jobs

uses TCP 8140 for communication

#### Chef

uses Ruby for fundamental configuration elements

uses SSH for remote device communication

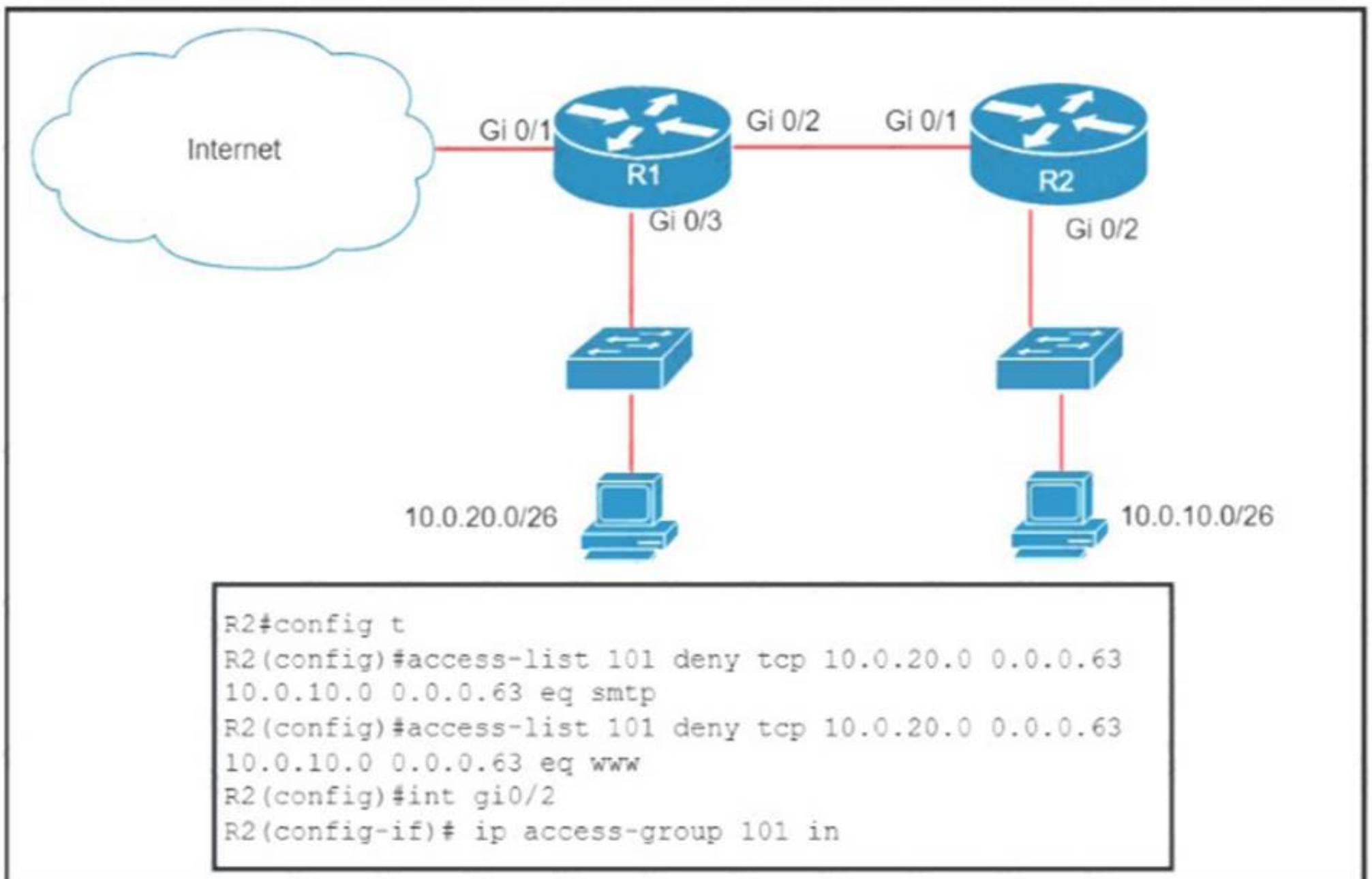
#### Puppet

uses YAML for fundamental configuration elements

fundamental configuration elements are stored in a manifest

#### NEW QUESTION 80

Refer to the exhibit.



An extended ACL has been configured and applied to router R2. The configuration failed to work as intended. Which two changes stop outbound traffic on TCP ports 25 and 80 to 10.0.20.0/26 from the 10.0.10.0/26 subnet while still allowing all other traffic? (Choose two)

- A. Add a "permit ip any any" statement to the beginning of ACL 101 for allowed traffic.
- B. Add a "permit ip any any" statement at the end of ACL 101 for allowed traffic.
- C. The source and destination IPs must be swapped in ACL 101.
- D. The ACL must be configured on the Gi0/2 interface inbound on R1.
- E. The ACL must be moved to the Gi0/1 interface outbound on R2.

**Answer: AE**



NEW QUESTION 81

Which MAC address is recognized as a VRRP virtual address?

- A. 0000.5E00.010a
- B. 0005.3711.0975
- C. 0000.0C07.AC99
- D. 0007.C070/AB01

Answer: A

NEW QUESTION 85

Which statement correctly compares traditional networks and controller-based networks?

- A. Only traditional networks offer a centralized control plane
- B. Only traditional networks natively support centralized management
- C. Traditional and controller-based networks abstract policies from device configurations
- D. Only controller-based networks decouple the control plane and the data plane

Answer: C

NEW QUESTION 90

Refer to the exhibit.

```
R1# show ip route | begin gateway
Gateway of last resort is 209.165.200.246 to network 0.0.0.0
S* 0.0.0.0/0 [1/0] via 209.165.200.246, Serial0/1/0
   is directly connected, Serial0/1/0
   172.16.0.0/16 is variably subnetted, 3 subnets, 3 masks
S   172.16.0.0/24 [1/0] via 207.165.200.250, Serial0/0/0
O   172.16.0.128/25 [110/38443] via 207.165.200.254, 00:00:23, Serial0/0/1
D   172.16.0.192/29 [90/3184439] via 207.165.200.254, 00:00:25, Serial0/0/1
   209.165.200.0/24 is variably subnetted, 4 subnets, 2 masks
C   209.165.200.248/30 is directly connected, Serial0/0/0
L   209.165.200.249/32 is directly connected, Serial0/0/0
C   209.165.200.252/30 is directly connected, Serial0/0/1
L   209.165.200.253/32 is directly connected, Serial0/0/1
```

With which metric was the route to host 172.16.0.202 learned?

- A. 110
- B. 38443
- C. 3184439

Answer: C

NEW QUESTION 95

Drag and drop the WLAN components from the left onto the correct descriptions on the right.

access point	
virtual interface	
dynamic interface	
service port	
wireless LAN controller	

- A. Mastered
- B. Not Mastered

Answer: A

Explanation:

- 5:1
- 1:2
- 2:4
- 4:3

3:5

**NEW QUESTION 97**

An engineer must configure a WLAN using the strongest encryption type for WPA2- PSK. Which cipher fulfills the configuration requirement?

- A. WEP
- B. RC4
- C. AES
- D. TKIP

**Answer: D**

**NEW QUESTION 102**

.....

## Thank You for Trying Our Product

### We offer two products:

1st - We have Practice Tests Software with Actual Exam Questions

2nd - Questions and Answers in PDF Format

### 200-301 Practice Exam Features:

- \* 200-301 Questions and Answers Updated Frequently
- \* 200-301 Practice Questions Verified by Expert Senior Certified Staff
- \* 200-301 Most Realistic Questions that Guarantee you a Pass on Your First Try
- \* 200-301 Practice Test Questions in Multiple Choice Formats and Updates for 1 Year

**100% Actual & Verified — Instant Download, Please Click**  
**[Order The 200-301 Practice Test Here](#)**