

Microsoft

Exam Questions AZ-400

Microsoft Azure DevOps Solutions (beta)



NEW QUESTION 1

- (Exam Topic 4)

Note: This question is part of a series of questions that present the same scenario. Each question in the series contains a unique solution that might meet the stated goals. Some question sets might have more than one correct solution, while others might not have a correct solution.

After you answer a question in this section, you will NOT be able to return to it. As a result, these questions will not appear in the review screen.

You plan to create a release pipeline that will deploy Azure resources by using Azure Resource Manager templates. The release pipeline will create the following resources:

- Two resource groups
- Four Azure virtual machines in one resource group
- Two Azure SQL databases in other resource group

You need to recommend a solution to deploy the resources.

Solution: Create two standalone templates, each of which will deploy the resources in its respective group. Does this meet the goal?

- A. Yes
- B. No

Answer: B

Explanation:

References: <https://docs.microsoft.com/en-us/azure/azure-resource-manager/resource-group-linked-templates>

NEW QUESTION 2

- (Exam Topic 4)

You have an Azure DevOps project that contains a build pipeline. The build pipeline uses approximately 50 open source libraries.

You need to ensure that all the open source libraries comply with your company's licensing standards.

Which service should you use?

- A. Ansible
- B. Maven
- C. WhiteSource Bolt
- D. Helm

Answer: C

Explanation:

WhiteSource provides WhiteSource Bolt, a lightweight open source security and management solution developed specifically for integration with Azure DevOps and Azure DevOps Server.

Note: WhiteSource is the leader in continuous open source software security and compliance management. WhiteSource integrates into your build process, irrespective of your programming languages, build tools, or development environments. It works automatically, continuously, and silently in the background, checking the security, licensing, and quality of your open source components against WhiteSource constantly-updated denitive database of open source repositories.

Note: Blackduck would also be a good answer, but it is not an option here. Reference: <https://www.azuredevopslabs.com/labs/vstsextend/whitesource/>

NEW QUESTION 3

- (Exam Topic 4)

You are designing a YAML template for use with Azure Pipelines. The template Will include the Outputfile parameter.

Which two methods can you use to reference the parameter? Each correct answer presents a complete solution. NOTE: Each correct selection is worth one point.

A. `$(parameters['outputfile'])`

B. `${(parameters.outputfile)}`

C. `$(parameters.outputfile)`

D. `$(parameters[outputfile])`

E. `${(parameters['outputfile'])}`

- A. Option A
- B. Option B
- C. Option C
- D. Option D
- E. Option E

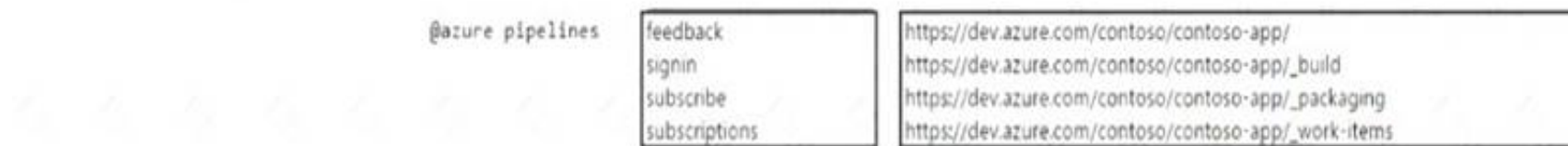
Answer: CD

NEW QUESTION 4

- (Exam Topic 4)

You have a project in Azure DevOps named Contoso App that contains pipelines in Azure Pipelines for GitHub repositories. You need to ensure that developers receive Microsoft Teams notifications when there are failures in a pipeline of Contoso App. What should you run in Teams? To answer, select the appropriate options in the answer area. NOTE: Each correct selection is worth one point.

Answer Area



- A. Mastered
- B. Not Mastered

Answer: A

Explanation:

Box 1: subscribe

To start monitoring all pipelines in a project, use the following command inside a channel:

@azure pipelines subscribe [project url]

Box 2: https://dev.azure.com/contoso/contoso-app/

Subscribe to a pipeline or all pipelines in a project to receive notifications:

@azure pipelines subscribe [pipeline url/ project url]

NEW QUESTION 5

- (Exam Topic 4)

You have an Azure subscription that contains multiple Azure pipelines.

You need to deploy a monitoring solution for the pipelines. The solution must meet the following requirements:

- > Parse logs from multiple sources.
- > identify the root cause of issues.

What advanced feature of a monitoring tool should include in the solution?

- A. directed monitoring
- B. synthetic monitoring
- C. analytics
- D. Alert Management

Answer: B

NEW QUESTION 6

- (Exam Topic 4)

Your company uses GitHub for source control. The company has a team that performs code reviews.

You need to automate the assignment of the code reviews. The solution must meet the following requirements: Prioritize the assignment of code reviews to team members who have the fewest outstanding assignments.

Ensure that each team member performs an equal number of code reviews in any 30-day period. Prevent the assignment of code reviews to the team leader.

Which two actions should you perform? Each correct answer presents part of the solution. NOTE: Each correct selection is worth one point.

- A. Clear Never assign certain team members.
- B. Select If assigning team members, don't notify the entire team.
- C. Select Never assign certain team members.
- D. Set Routing algorithm to Round robin.
- E. Set Routing algorithm to Load balance.

Answer: AE

Explanation:

A: To always skip certain members of the team, select Never assign certain team members. Then, select one or more team members you'd like to always skip. In this case select the team leader.

E: The load balance algorithm chooses reviewers based on each member's total number of recent review requests and considers the number of outstanding reviews for each member. The load balance algorithm tries to ensure that each team member reviews an equal number of pull requests in any 30 day period.

Reference:

<https://docs.github.com/en/organizations/organizing-members-into-teams/managing-code-review-assignment-fo>

NEW QUESTION 7

- (Exam Topic 4)

You create a Microsoft ASP.NET Core application.

You plan to use Azure Key Vault to provide secrets to the application as configuration data.

You need to create a Key Vault access policy to assign secret permissions to the application. The solution must use the principle of least privilege.

Which secret permissions should you use?

- A. List only
- B. Get only
- C. Get and List

Answer: B

Explanation:

Application data plane permissions:

- > Keys: sign
- > Secrets: get Reference:

<https://docs.microsoft.com/en-us/azure/key-vault/key-vault-secure-your-key-vault>

NEW QUESTION 8

- (Exam Topic 4)

After you answer a question in this section, you will NOT be able to return to it. As a result, these questions will not appear in the review screen.

You use Azure Pipelines to build and test a React js application. You have a pipeline that has a single job.

You discover that installing JavaScript packages from npm takes approximately five minutes each time you run the pipeline.

You need to recommend a solution to reduce the pipeline execution time.

Solution: You recommend defining a container job that uses a custom container that has the JavaScript packages preinstalled.

Does this meet the goal?

- A. Yes
- B. No

Answer: B

Explanation:

Instead enable pipeline caching. Note:

npm-cache is a command line utility that caches dependencies installed via npm, bower, jspm and composer.

It is useful for build processes that run [npm|bower|composer|jspm] install every time as part of their build process. Since dependencies don't change often, this often means slower build times. npm-cache helps alleviate this problem by caching previously installed dependencies on the build machine.

Reference: <https://www.npmjs.com/package/npm-cache>

NEW QUESTION 9

- (Exam Topic 4)

Your company is building a mobile app that targets Android devices and OS devices. Your team uses Azure DevOps to manage all work items and release cycles.

You need to recommend a solution to perform the following tasks:

- Collect crash reports for issue analysis
- Distribute beta releases to your testers.
- Get user feedback on the functionality of new apps. What should you include in the recommendation?

- A. Jenkins integration
- B. Azure Application Insights widgets
- C. the Microsoft Test & Feedback extension
- D. Microsoft Visual Studio App Center integration

Answer: D

Explanation:

The "Exploratory Testing" extension is now "Test & Feedback" and is now Generally Available.

Anyone can now test web apps and give feedback, all directly from the browser on any platform: Windows, Mac, or Linux. Available for Google Chrome and Mozilla Firefox (required version 50.0 or above) currently. Support for Microsoft Edge is in the pipeline and will be enabled once Edge moves to a Chromium-compatible web platform.

References:

<https://marketplace.visualstudio.com/items?itemName=ms.vss-exploratorytesting-web>

NEW QUESTION 10

- (Exam Topic 4)

You need to ensure that the <https://contoso.com/statushook> webhook is called every time a repository named az40010480345acr1 receives a new version of an image named dotnetapp.

To complete this task, sign in to the Microsoft Azure portal.

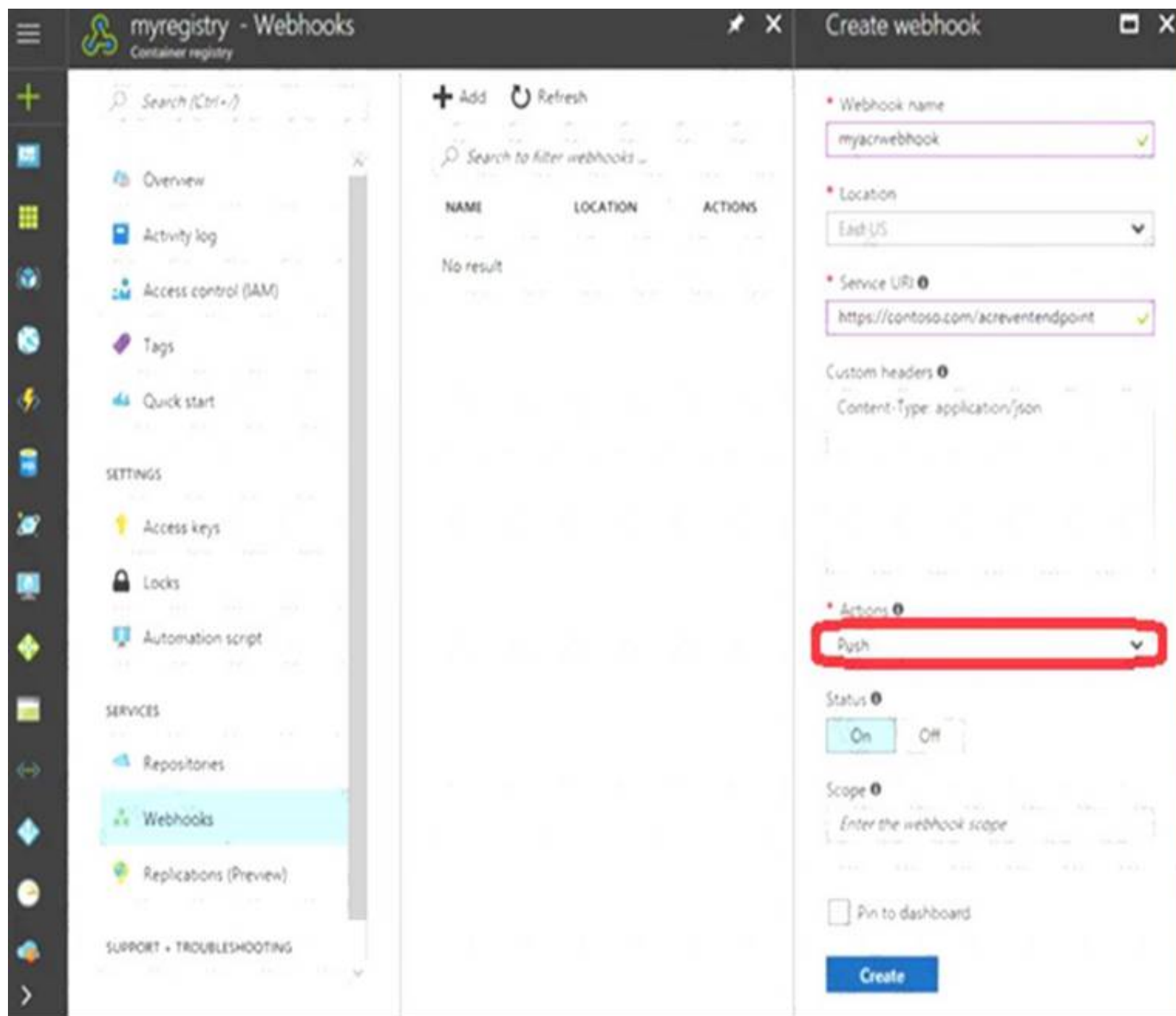
- A. Mastered
- B. Not Mastered

Answer: A

Explanation:

- > Sign in to the Azure portal.
- > Navigate to the container registry az40010480345acr1.
- > Under Services, select Webhooks.
- > For Trigger actions select image push

Example web hook:



Reference:
<https://docs.microsoft.com/en-us/azure/container-registry/container-registry-webhook>

NEW QUESTION 10

- (Exam Topic 4)

You have a web app that connects to an Azure SQL Database named db1.

You need to configure db1 to send Query Store runtime statistics to Azure Log Analytics. To complete this task, sign in to the Microsoft Azure portal.

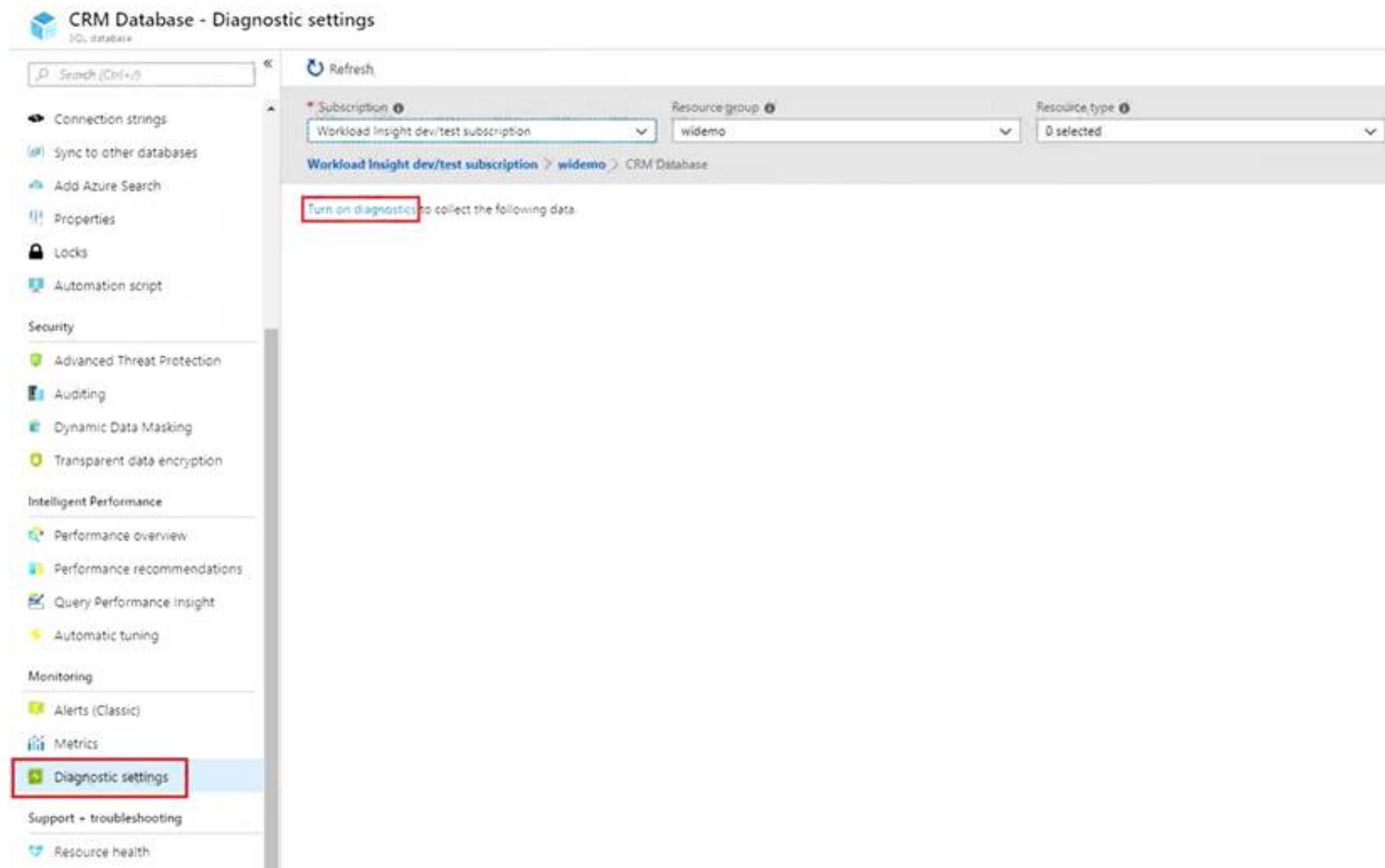
- A. Mastered
- B. Not Mastered

Answer: A

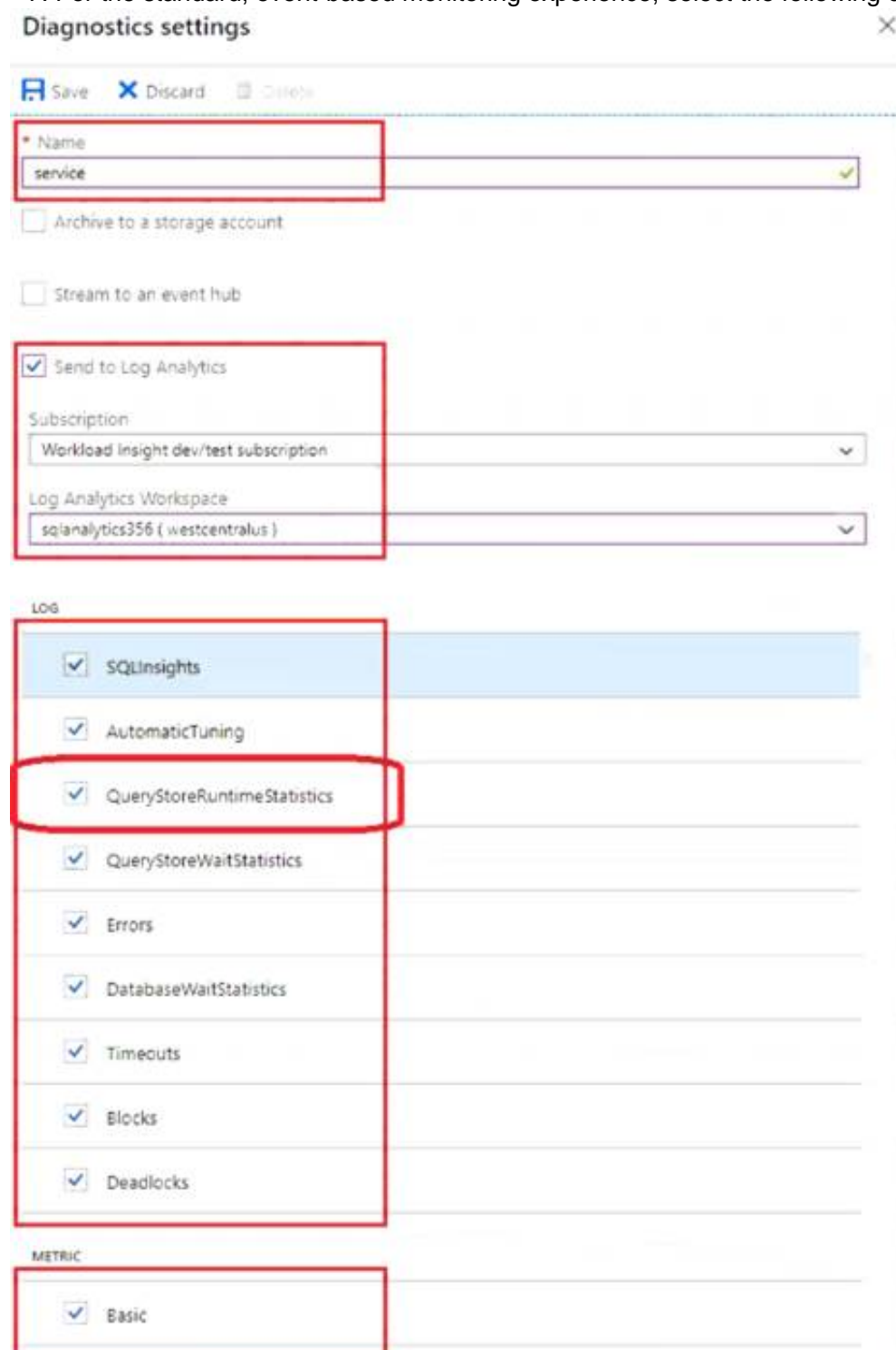
Explanation:

To enable streaming of diagnostic telemetry for a single or a pooled database, follow these steps:

- * 1. Go to Azure SQL database resource.
- * 2. Select Diagnostics settings.
- * 3. Select Turn on diagnostics if no previous settings exist, or select Edit setting to edit a previous setting. You can create up to three parallel connections to stream diagnostic telemetry.
- * 4. Select Add diagnostic setting to configure parallel streaming of diagnostics data to multiple resources.



- * 5. Enter a setting name for your own reference.
- * 6. Select a destination resource for the streaming diagnostics data: Archive to storage account, Stream to an event hub, or Send to Log Analytics.
- * 7. For the standard, event-based monitoring experience, select the following check boxes for database diagnostics log telemetry: QueryStoreRuntimeStatistics



- * 8. For an advanced, one-minute-based monitoring experience, select the check box for Basic metrics.
- * 9. Select Save. Reference:
<https://docs.microsoft.com/en-us/azure/azure-sql/database/metrics-diagnostic-telemetry-logging-streaming-expo>

NEW QUESTION 14

- (Exam Topic 4)

Your company has a project in Azure DevOps for a new web application. The company identifies security as one of the highest priorities. You need to recommend a solution to minimize the likelihood that infrastructure credentials will be leaked. What should you recommend?

- A. Add a Run Inline Azure PowerShell task to the pipeline.
- B. Add a PowerShell task to the pipeline and run Set-AzureKeyVaultSecret.
- C. Add a Azure Key Vault task to the pipeline.
- D. Add Azure Key Vault references to Azure Resource Manager templates.

Answer: B

Explanation:

Azure Key Vault provides a way to securely store credentials and other keys and secrets.

The Set-AzureKeyVaultSecret cmdlet creates or updates a secret in a key vault in Azure Key Vault. References:

<https://docs.microsoft.com/en-us/powershell/module/azurerm.keyvault/set-azurekeyvaultsecret>

NEW QUESTION 19

- (Exam Topic 4)

Note: This question is part of a series of questions that present the same scenario. Each question in the series contains a unique solution that might meet the stated goals. Some question sets might have more than one correct solution, while others might not have a correct solution.

After you answer a question in this section, you will NOT be able to return to it. As a result, these questions will not appear in the review screen.

You plan to update the Azure DevOps strategy of your company.

You need to identify the following issues as they occur during the company's development process:

- > Licensing violations
- > Prohibited libraries

Solution: You implement pre-deployment gates. Does this meet the goal?

- A. Yes
- B. No

Answer: B

Explanation:

Instead use implement continuous integration.

Note: WhiteSource is the leader in continuous open source software security and compliance management. WhiteSource integrates into your build process, irrespective of your programming languages, build tools, or development environments. It works automatically, continuously, and silently in the background, checking the security, licensing, and quality of your open source components against WhiteSource constantly-updated denitive database of open source repositories.

Reference: <https://azuredevopslabs.com/labs/vstsextend/whitesource/>

NEW QUESTION 22

- (Exam Topic 4)

Your company has a project in Azure DevOps for a new web application. The company uses Service Now for change management.

You need to ensure that a change request is processed before any components can be deployed to the production environment.

What are two ways to integrate into the Azure DevOps release pipeline? Each correct answer presents a complete solution.

NOTE: Each correct selection is worth one point.

- A. Define a deployment control that invokes the Service Now SOAP API.
- B. Define a post deployment gate after the deployment to the QA stage.
- C. Define a deployment control that invokes the ServiceNow REST API.
- D. Define a pre deployment gate before the deployment to the Prod stage.

Answer: AB

Explanation:

<https://docs.microsoft.com/en-us/azure/devops/pipelines/release/approvals/servicenow?view=azure-devops>

NEW QUESTION 25

- (Exam Topic 4)

You are monitoring the health and performance of an Azure web app by using Azure Application Insights. You need to ensure that an alert is sent when the web app has a sudden rise in performance issues and failures. What should you use?

- A. custom events
- B. Application Insights Profiler
- C. usage analysis
- D. Smart Detection
- E. Continuous export

Answer: D

Explanation:

Smart Detection automatically warns you of potential performance problems and failure anomalies in your web application. It performs proactive analysis of the telemetry that your app sends to Application

Insights. If there is a sudden rise in failure rates, or abnormal patterns in client or server performance, you get an alert.

Reference:

<https://docs.microsoft.com/en-us/azure/azure-monitor/app/proactive-diagnostics>

NEW QUESTION 28

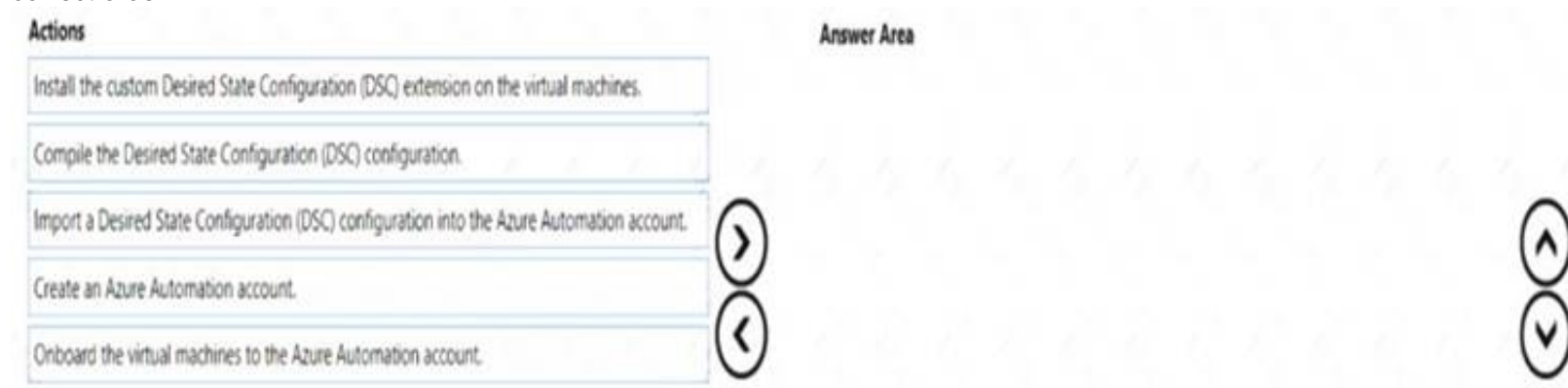
- (Exam Topic 4)

You have an Azure DevOps organization named Contoso.

You have 10 Azure virtual machines that run Windows Server 2019. The virtual machines host an application that you build and deploy by using Azure Pipelines. Each virtual machine has the Web Server (IIS) role installed and configured.

You need to ensure that the web server configurations pin the virtual machines is maintained automatically. The solution must provide centralized management of the configuration settings and minimize management overhead.

Which four actions should you perform in sequence? To answer, move the appropriate actions from the list of actions to the answer area and arrange them in the correct order.



The screenshot shows an exam interface with two main sections: 'Actions' and 'Answer Area'.

Actions:

- Install the custom Desired State Configuration (DSC) extension on the virtual machines.
- Compile the Desired State Configuration (DSC) configuration.
- Import a Desired State Configuration (DSC) configuration into the Azure Automation account.
- Create an Azure Automation account.
- Onboard the virtual machines to the Azure Automation account.

Answer Area:

The answer area is empty, with up and down arrow buttons on the right side for reordering.

- A. Mastered
- B. Not Mastered

Answer: A

Explanation:

Step1: Create an Azure Automation account. An Azure Automation account is required.

Step 2: Install the custom Desired State Configuration (DSC) extension on the virtual machines

Under the hood, and without an administrator having to remote into a VM, the Azure VM Desired State Configuration extension registers the VM with Azure Automation State Configuration.

Step 3: Onboard the virtual machines to the Azure Automation account. Step 4: Complete the Desired State Configuration (DSC) configuration. Create a DSC configuration.

Reference:

<https://docs.microsoft.com/en-us/azure/automation/automation-dsc-onboarding>

NEW QUESTION 30

- (Exam Topic 4)

Your company deploys applications in Docker containers.

You want to detect known exploits in the Docker images used to provision the Docker containers.

You need to integrate image scanning into the application lifecycle. The solution must expose the exploits as early as possible during the application lifecycle.

What should you configure?

- A. a task executed in the continuous deployment pipeline and a scheduled task against a running production container.
- B. a task executed in the continuous integration pipeline and a scheduled task that analyzes the production container.
- C. a task executed in the continuous integration pipeline and a scheduled task that analyzes the image registry
- D. manual tasks performed during the planning phase and the deployment phase

Answer: C

Explanation:

You can use the Docker task to sign into ACR and then use a subsequent script to pull an image and scan the container image for vulnerabilities.

Use the docker task in a build or release pipeline. This task can be used with Docker or Azure Container registry.

References:

<https://docs.microsoft.com/en-us/azure/devops/articles/security-validation-cicd-pipeline?view=vsts>

NEW QUESTION 34

- (Exam Topic 4)

Your company uses Azure DevOps for the build pipelines and deployment pipelines of Java based projects.

You need to recommend a strategy for managing technical debt.

Which two actions should you include in the recommendation? Each correct answer presents part of the solution

NOTE: Each correct selection is worth one point.

- A. Integrate Azure DevOps and SonarQube.
- B. Integrates Azure DevOps and Azure DevTest Labs.
- C. Configure post-deployment approvals in the deployment pipeline.
- D. Configure pre-deployment approvals in the deployment pipeline.

Answer: AC

NEW QUESTION 36

- (Exam Topic 4)

You have an Azure DevOps organization named Contoso and an Azure subscription.

You use Azure DevOps to build and deploy a web app named App1. Azure Monitor is configured to generate an email notification in response to alerts generated whenever App1 generates a server-side error.

You need to receive notifications in Microsoft Teams whenever an Azure Monitor alert is generated. Which two actions should you perform? Each correct answer presents part of the solution.

NOTE: Each correct selection is worth one point.

- A. Create an Azure logic app that has an HTTP request trigger.
- B. Modify the Diagnostics settings in Azure Monitor.
- C. Modify an action group in Azure Monitor.
- D. Create an Azure Monitor workbook.
- E. Create an Azure logic app that has an Azure DevOps trigger.

Answer: AB

Explanation:

<https://docs.microsoft.com/en-us/azure/azure-monitor/platform/action-groups-logic-app>

NEW QUESTION 37

- (Exam Topic 4)

Note: This question is part of a series of questions that present the same scenario. Each question in the series contains a unique solution that might meet the stated goals. Some question sets might have more than one correct solution, while others might not have a correct solution.

After you answer a question in this section, you will NOT be able to return to it. As a result, these questions will not appear in the review screen.

You integrate a cloud-hosted Jenkins server and a new Azure DevOps deployment.

You need Azure DevOps to send a notification to Jenkins when a developer commits changes to a branch in Azure Repos.

Solution: You create an email subscription to an Azure DevOps notification. Does this meet the goal?

- A. Yes
- B. NO

Answer: B

Explanation:

You can create a service hook for Azure DevOps Services and TFS with Jenkins. References:

<https://docs.microsoft.com/en-us/azure/devops/service-hooks/services/jenkins>

NEW QUESTION 38

- (Exam Topic 4)

You need to create an instance of Azure Application Insights named az400-9940427-main and configure the instance to receive telemetry data from an Azure web app named az400-9940427-main.

To complete this task, sign in to the Microsoft Azure portal.

- A. Mastered
- B. Not Mastered

Answer: A

Explanation:

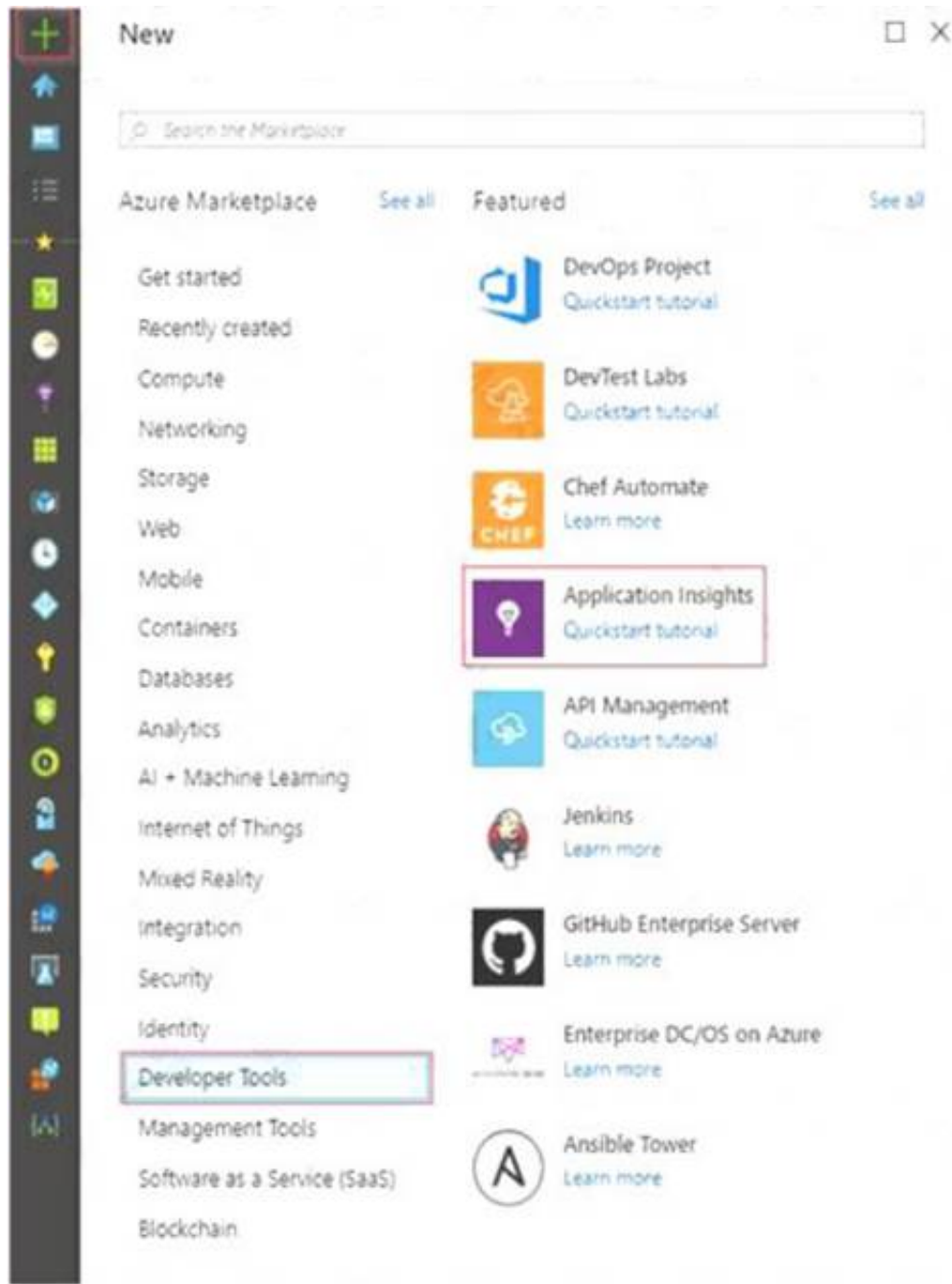
Step 1: Create an instance of Azure Application Insights

* 1. Open Microsoft Azure Portal

* 2. Log into your Azure account, Select Create a resource > Developer tools > Application Insights.

* 3. Enter the following settings, and then select Review + create. Name: az400-9940427-main

Graphical user interface, application Description automatically generated



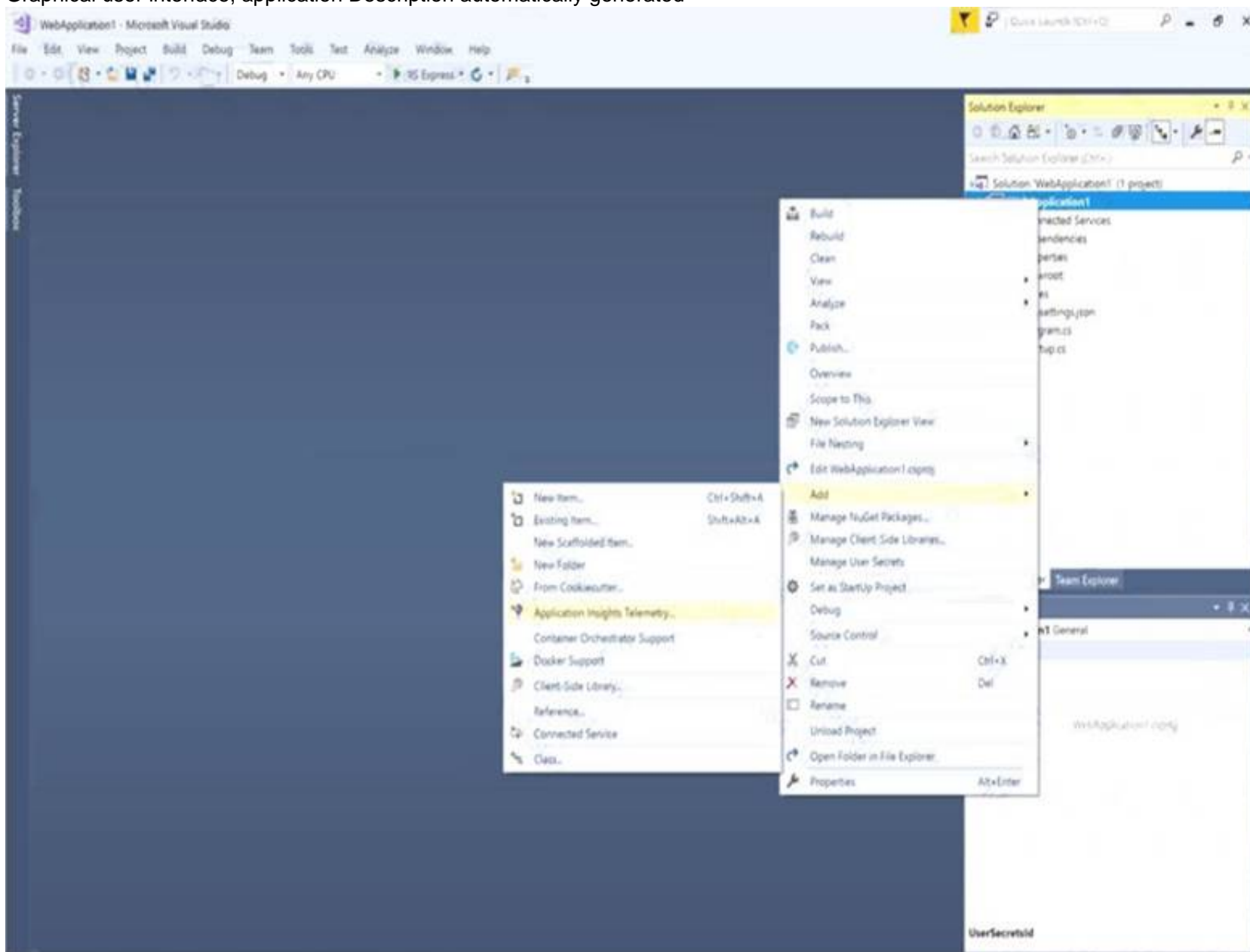
Step 2: Configure App Insights SDK

* 1. Open your ASP.NET Core Web App project in Visual Studio > Right-click on the AppName in the Solution Explorer > Select Add > Application Insights Telemetry.

* 2. Click the Get Started button

* 3. Select your account and subscription > Select the Existing resource you created in the Azure portal > Click Register.

Graphical user interface, application Description automatically generated



Reference:

<https://docs.microsoft.com/bs-latn-ba/azure/azure-monitor/learn/dotnetcore-quick-start?view=vs-2017>

NEW QUESTION 39

- (Exam Topic 4)

You have a pipeline named Pipeline1 in Azure Pipelines.

You need to create a service connection to enable Pipeline1 to download a public container image. Which type of service connection should you create?

- A. a Docker host
- B. Azure Service Fabric
- C. Azure Kubernetes Service (AKS)
- D. a Docker registry

Answer: D

NEW QUESTION 43

- (Exam Topic 4)

You have several Azure Active Directory (Azure AD) accounts.

You need to ensure that users use multi-factor authentication (MFA) to access Azure apps from untrusted networks.

What should you configure in Azure AD?

- A. access reviews
- B. managed identities
- C. entitlement management
- D. conditional access

Answer: D

Explanation:

You can configure a Conditional Access policy that requires MFA for access from untrusted networks. Reference:

<https://docs.microsoft.com/en-us/azure/active-directory/conditional-access/howto-conditional-access-policy-all>

NEW QUESTION 47

- (Exam Topic 4)

You have an Azure subscription that contains the resources shown in the following table.

Name	Type
Feed1	Azure Artifacts feed
Project1	Project in Azure DevOps

Project1 produces npm packages that are published to Feed 1. Feed1 is consumed by multiple projects. You need to ensure that only tested packages are available for consumption. The solution must minimize development effort.

What should you do?

- A. Create a feed view named @default
- B. After the npm packages test successfully, configure a release pipeline that promotes a package to the @default view.
- C. Create a feed view named release and set @release as the default view
- D. After the npm packages test successfully, configure a release pipeline that promotes a package to the @release View.
- E. Create a feed view named @release and set @release as the default view
- F. After the npm packages test successfully, configure a release pipeline that tags the packages as release.
- G. Create a feed view named @default
- H. After the npm packages test successfully
- I. configure a release pipeline that tags the packages as release.

Answer: C

NEW QUESTION 48

- (Exam Topic 4)

You need to deploy Azure Kubernetes Service (AKS) to host an application. The solution must meet the following requirements:

- Containers must only be published internally.
- AKS clusters must be able to create and manage containers in Azure.

What should you use for each requirement? To answer, select the appropriate options in the answer area. NOTE: Each correct selection is worth one point.

Containers must only be published internally:

	▼
Azure Container Instances	
Azure Container Registry	
Dockerfile	

AKS clusters must be able to create and manage containers in Azure:

	▼
An Azure Active Directory (Azure AD) group	
An Azure Automation account	
An Azure service principal	

- A. Mastered
- B. Not Mastered

Answer: A

Explanation:

Box 1: Azure Container Registry

Azure services like Azure Container Registry (ACR) and Azure Container Instances (ACI) can be used and connected from independent container orchestrators like kubernetes (k8s). You can set up a custom ACR and connect it to an existing k8s cluster to ensure images will be pulled from the private container registry instead of the public docker hub.

Box 2: An Azure service principal

When you're using Azure Container Registry (ACR) with Azure Kubernetes Service (AKS), an authentication mechanism needs to be established. You can set up AKS and ACR integration during the initial creation of your AKS cluster. To allow an AKS cluster to interact with ACR, an Azure Active Directory service principal is used.

References:

<https://thorsten-hans.com/how-to-use-private-azure-container-registry-with-kubernetes> <https://docs.microsoft.com/en-us/azure/aks/cluster-container-registry-integration>

NEW QUESTION 50

- (Exam Topic 4)

You are automating the testing process for your company. You need to automate UI testing of a web application. Which framework should you use?

- A. JaCoco
- B. Selenium
- C. Xamarin.UITest
- D. Microsoft.CodeAnalysis

Answer: B

Explanation:

Performing user interface (UI) testing as part of the release pipeline is a great way of detecting unexpected changes, and need not be difficult. Selenium can be used to test your website during a continuous deployment release and test automation.

References:

<https://docs.microsoft.com/en-us/azure/devops/pipelines/test/continuous-test-selenium?view=azure-devops>

NEW QUESTION 55

- (Exam Topic 4)

You have a GitHub Enterprise account.

You need to enable push protection for secret scanning of the account repositories. What should you do first?

- A. Purchase Premium Plus support.
- B. Enforce multi-factor authentication (MFA).
- C. Purchase a GitHub Advanced Security license.
- D. Create an access policy for secrets.

Answer: C

NEW QUESTION 56

- (Exam Topic 4)

Note: This question is part of a series of questions that present the same scenario. Each question in the series contains a unique solution that might meet the stated goals. Some question sets might have more than one correct solution, while others might not have a correct solution.

After you answer a question in this section, you will NOT be able to return to it. As a result these questions will not appear in the review screen.

You have an approval process that contains a condition. The condition requires that releases be approved by a team leader before they are deployed.

You have a policy stating that approvals must occur within eight hours.

You discover that deployments fail if the approvals take longer than two hours.

You need to ensure that the deployments only fail if the approvals take longer than eight hours.

Solution: From Pre-deployment conditions, you modify the Timeout setting for pre-deployment approvals. Does this meet the goal?

- A. Yes
- B. No

Answer: B

Explanation:

Use a gate instead of an approval instead.

References: <https://docs.microsoft.com/en-us/azure/devops/pipelines/release/approvals/gates>

NEW QUESTION 59

- (Exam Topic 4)

Your company is concerned that when developers introduce open source libraries, it creates licensing compliance issues.

You need to add an automated process to the build pipeline to detect when common open source libraries are added to the code base.

What should you use?

- A. PDM
- B. OWASPZAP
- C. WhiteSource
- D. Jenkins

Answer: C

NEW QUESTION 64

- (Exam Topic 4)

You have an Azure DevOps organization named Contoso and an Azure subscription.

You use Azure DevOps to build a containerized app named App1 and deploy App1 to an Azure container instance named ACM.

You need to restart ACI1 when App1 stops responding. What should you do?

- A. Add a liveness probe to the YAML configuration of App1.
- B. Use Connection Monitor in Azure Network Watcher.
- C. Add a readiness probe to the YAML configuration of App1.
- D. Use IP flow verify in Azure Network Watcher.

Answer: A

Explanation:

<https://docs.microsoft.com/en-us/azure/container-instances/container-instances-liveness-probe>

NEW QUESTION 67

- (Exam Topic 4)

You have an Azure DevOps organization named Contoso that contains a project named Project 1. You provision an Azure key vault name Keyvault1.

You need to reference Keyvault1 secrets in a build pipeline of Project1. What should you do first?

- A. Create an XAML build service.
- B. Create a variable group in Project1.
- C. Add a secure file to Project1.
- D. Configure the security policy of Contoso.

Answer: B

Explanation:

Before this will work, the build needs permission to access the Azure Key Vault. This can be added in the Azure Portal.

Open the Access Policies in the Key Vault and add a new one. Choose the principle used in the DevOps build. Reference:

<https://docs.microsoft.com/en-us/azure/devops/pipelines/release/azure-key-vault>

NEW QUESTION 70

- (Exam Topic 4)

You have multi-tier application that has an Azure Web Apps front end and an Azure SQL Database back end. You need to recommend a solution to capture and store telemetry data. The solution must meet the following requirements:

- Support using ad-hoc queries to identify baselines.
- Trigger alerts when metrics in the baseline are exceeded.
- Store application and database metrics in a central location. What should you include in the recommendation?

- A. Azure Application Insights
- B. Azure SQL Database Intelligent Insights
- C. Azure Event Hubs
- D. Azure Log Analytics

Answer: A

Explanation:

Azure Platform as a Service (PaaS) resources, like Azure SQL and Web Sites (Web Apps), can emit performance metrics data natively to Log Analytics.

The Premium plan will retain up to 12 months of data, giving you an excellent baseline ability.

There are two options available in the Azure portal for analyzing data stored in Log analytics and for creating queries for ad hoc analysis.

References: <https://docs.microsoft.com/en-us/azure/azure-monitor/platform/collect-azurepass-posh>

NEW QUESTION 73

- (Exam Topic 4)

You have an Azure subscription that contains resources in several resource groups.

You need to design a monitoring strategy that will provide a consolidated view. The solution must support the following requirements:

- Support role-based access control (RBAC) by using Azure Active Directory (Azure AD) identities.
- Include visuals from Azure Monitor that are generated by using the Kusto query language.

- Support documentation written in markdown.
 - Use the latest data available for each visual.
- What should you use to create the consolidated view?

- A. Azure Data Explorer
- B. Azure dashboards
- C. Azure Monitor
- D. Microsoft Power BI

Answer: A

Explanation:

There are several tools available for running queries in Azure Data Explorer, including Kusto.

Kusto uses a role-based access control (RBAC) model, under which authenticated principals are mapped to roles, and get access according to the roles they're assigned.

Note: Azure Data Explorer is a highly scalable and secure analytics service that enables you to do rich exploration of structured and unstructured data for instant insights. Optimized for ad-hoc queries, Azure Data Explorer enables rich data exploration over raw, structured, and semi-structured data delivering fast time to insight. Query with a modern, intuitive query language that offers fast, ad-hoc, and advanced query capabilities over high-rate data volumes and varieties

Reference:

<https://docs.microsoft.com/en-us/azure/data-explorer/tools-integrations-overview>

NEW QUESTION 74

- (Exam Topic 4)

You plane to store signed images in an Azure Container Registry instance named az4009940427acr1.

You need to modify the SKU for az4009940427acr1 to support the planned images. The solution must minimize costs.

To complete this task, sign in to the Microsoft Azure portal.

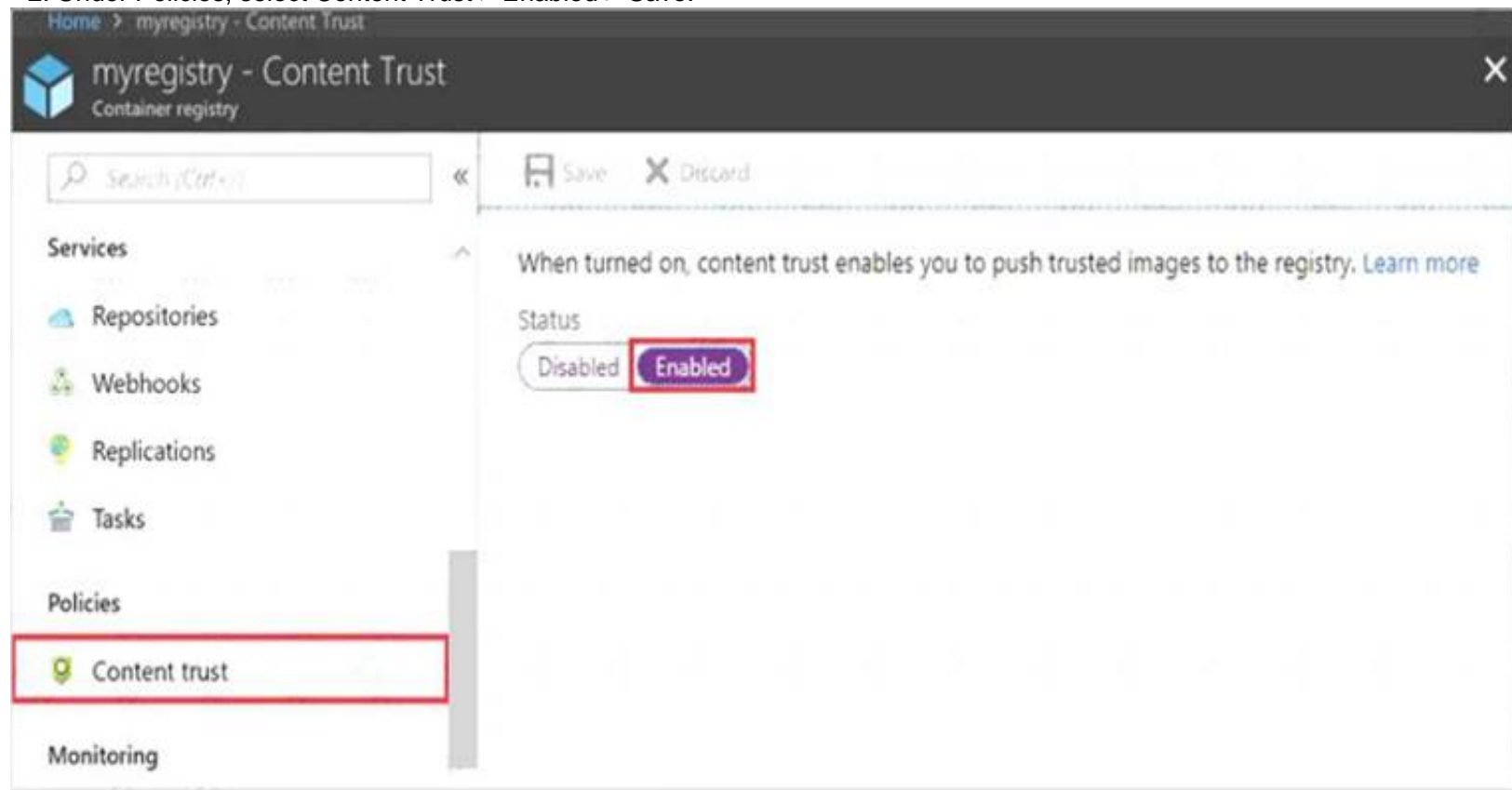
- A. Mastered
- B. Not Mastered

Answer: A

Explanation:

* 1. Open Microsoft Azure Portal, and select the Azure Container Registry instance named az4009940427acr1.

* 2. Under Policies, select Content Trust > Enabled > Save.



References:

<https://docs.microsoft.com/en-us/azure/container-registry/container-registry-content-trust>

NEW QUESTION 75

- (Exam Topic 4)

You are designing an Azure DevOps strategy for your company's development team. You suspect that the team's productivity is low due to accumulate technical debt. You need to recommend a metric to assess the amount of the team's technical debt. What should you recommend?

- A. the number of code modules in an application
- B. the number of unit test failures
- C. the percentage of unit test failures
- D. the percentage of overall time spent on rework

Answer: D

NEW QUESTION 76

- (Exam Topic 4)

You manage an Azure web app that supports an e-commerce website.

You need to increase the logging level when the web app exceeds normal usage patterns. The solution must minimize administrative overhead.

Which two resources should you include in the solution? Each correct answer presents part of the solution. NOTE: Each correct selection is worth one point.

- A. an Azure Monitor alert that has a dynamic threshold
- B. an Azure Automation runbook
- C. an Azure Monitor alert that uses an action group that has an email action
- D. the Azure Monitor autoscale settings
- E. an Azure Monitor alert that has a static threshold

Answer: BC

NEW QUESTION 77

- (Exam Topic 4)

Your company is building a new web application.

You plan to collect feedback from pilot users on the features being delivered.

All the pilot users have a corporate computer that has Google Chrome and the Microsoft Test & Feedback extension installed. The pilot users will test the application by using Chrome.

You need to identify which access levels are required to ensure that developers can request and gather feedback from the pilot users. The solution must use the principle of least privilege.

Which access levels in Azure DevOps should you identify? To answer, select the appropriate options in the answer area.

NOTE: Each correct selection is worth one point.

Developers:

Pilot users:

- A. Mastered
- B. Not Mastered

Answer: A

Explanation:

Graphical user interface, text, application Description automatically generated

Box 1: Basic

Assign Basic to users with a TFS CAL, with a Visual Studio Professional subscription, and to users for whom you are paying for Azure Boards & Repos in an organization.

Box 2: Stakeholder

Assign Stakeholders to users with no license or subscriptions who need access to a limited set of features. Note:

You assign users or groups of users to one of the following access levels:

Basic: provides access to most features

VS Enterprise: provides access to premium features

Stakeholders: provides partial access, can be assigned to unlimited users for free Reference:

<https://docs.microsoft.com/en-us/azure/devops/organizations/security/access-levels?view=vsts>

NEW QUESTION 81

- (Exam Topic 4)

You have a project in Azure DevOps.

You create the following YAML template named Template1.yml. steps:

- script: npm install
- script: yarn install
- script: npm run compile

You create the following pipeline named File1.yml. parameters:

usersteps:

- task: MyTask@1
- script: echo Done

You need to ensure that Template1.yml runs before File1.yml. How should you update File1.yml?

- A. parameters: usersteps: extends: template: template1.yml- task: MyTask@1 - script: echo Done
- B. template: template1.yml parameters: usersteps:- task: MyTask@1 - script: echo Done
- C. extends: template: template1.yml parameters: usersteps:- task: MyTask@1 - script: echo Done
- D. parameters: usersteps: - template: template1.yml- task: MyTask@1 - script: echo Done

Answer: C

Explanation:

Azure Pipelines offers two kinds of templates: includes and extends. Included templates behave like #include in C++; it's as if you paste the template's code right into the outer file, which references it. To continue the C++ metaphor, extends templates are more like inheritance: the template provides the outer structure of the pipeline and a set of places where the template consumer can make targeted alterations.

Example: extends:

template: template.yml@templates parameters:

usersteps:

- script: echo This is my first step
- script: echo This is my second step Reference:

<https://docs.microsoft.com/en-us/azure/devops/pipelines/security/templates>

NEW QUESTION 84

- (Exam Topic 4)

Note: This question is part of a series of questions that present the same scenario. Each question in the series contains a unique solution that might meet the stated goals. Some question sets might have more than one correct solution, while others might not have a correct solution.

After you answer a question in this section, you will NOT be able to return to it. As a result, these questions will not appear in the review screen.

You plan to create a release pipeline that will deploy Azure resources by using Azure Resource Manager templates. The release pipeline will create the following resources:

Two resource groups

Four Azure virtual machines in one resource group Two Azure SQL databases in other resource group

You need to recommend a solution to deploy the resources.

Solution: Create a single standalone template that will deploy all the resources. Does this meet the goal?

A. Yes

B. No

Answer: A

Explanation:

Use two templates, one for each resource group, and link the templates. References:

<https://docs.microsoft.com/en-us/azure/azure-resource-manager/resource-group-linked-templates>

NEW QUESTION 85

- (Exam Topic 4)

Your company « concerned that when developers introduce open source Libraries, it creates licensing compliance issues.

You need to add an automated process to the build pipeline to detect when common open source libraries are added to the code base.

What should you use?

A. Code Style

B. Microsoft Visual SourceSafe

C. Black Duck

D. Jenkins

Answer: C

Explanation:

Secure and Manage Open Source Software

Black Duck helps organizations identify and mitigate open source security, license compliance and code-quality risks across application and container portfolios.

Black Duck Hub and its plugin for Team Foundation Server (TFS) allows you to automatically find and fix open source security vulnerabilities during the build process, so you can proactively manage risk. The integration allows you to receive alerts and fail builds when any Black Duck Hub policy violations are met.

Note: WhiteSource would also be a good answer, but it is not an option here. References:

<https://marketplace.visualstudio.com/items?itemName=black-duck-software.hub-tfs>

NEW QUESTION 90

- (Exam Topic 4)

You have an Azure DevOps project named Project1 and an Azure subscription named Sub1. Sub1 contains an Azure SQL database named DB1.

You need to create a release pipeline that uses the Azure SQL Database Deployment task to update DB1. Which artifact should you deploy?

A. a BACPAC

B. a DACPAC

C. an LDF file

D. an MDF file

Answer: B

Explanation:

Use Azure SQL Database Deployment task in a build or release pipeline to deploy to Azure SQL DB using a DACPAC or run scripts using SQLCMD.

Reference:

<https://docs.microsoft.com/en-us/azure/devops/pipelines/tasks/deploy/sql-azure-dacpac-deployment>

NEW QUESTION 91

- (Exam Topic 4)

You have a project in Azure DevOps named Project1. Project1 contains a build pipeline named Pipe1 that builds an application named Appl.

You have an agent pool named Pool1 that contains a Windows Server 2019-based self-hosted agent. Pipe1 uses Pool1.

You plan to implement another project named Project2. Project2 will have a build pipeline named Pipe2 that builds an application named App2.

App1 and App2 have conflicting dependencies.

You need to minimize the possibility that the two build pipelines will conflict with each other. The solution must minimize infrastructure costs.

What should you do?

A. Create two container jobs.

B. Change the self-hosted agent to use Red Hat Enterprise Linux (RHEL) 8.

C. Add another self-hosted agent

D. Add a Docker Compose task to the build pipelines.

Answer: A

NEW QUESTION 93

- (Exam Topic 4)

You use Azure DevOps to manage the build and deployment of an app named App1. You have a release pipeline that deploys a virtual machine named VM1.

You plan to monitor the release pipeline by using Azure Monitor

You need to create an alert to monitor the performance of VM1. The alert must be triggered when the average CPU usage exceeds 70 percent for five minutes. The alert must calculate the average once every minute. How should you configure the alert rule? To answer, select the appropriate options in the answer area.

Answer Area

Aggregation granularity (Period):	<input type="radio"/> 1 minute <input checked="" type="radio"/> 5 minutes
Threshold value:	<input checked="" type="radio"/> Static <input type="radio"/> Dynamic
Operator:	<input checked="" type="radio"/> Greater than <input type="radio"/> Greater than or equal to <input type="radio"/> Less than or equal to <input type="radio"/> Less than

- A. Mastered
- B. Not Mastered

Answer: A

Explanation:

Box 1: 5 minutes

The alert must calculate the average once every minute.

Note: We [Microsoft] recommend choosing an Aggregation granularity (Period) that is larger than the Frequency of evaluation, to reduce the likelihood of missing the first evaluation of added time series

Box 2: Static

Box 3: Greater than

Example, say you have an App Service plan for your website. You want to monitor CPU usage on multiple instances running your web site/app. You can do that using a metric alert rule as follows:

- > Target resource: myAppServicePlan
- > Metric: Percentage CPU
- > Condition Type: Static
- > Dimensions
- > Instance = InstanceName1, InstanceName2
- > Time Aggregation: Average
- > Period: Over the last 5 mins
- > Frequency: 1 min
- > Operator: GreaterThan
- > Threshold: 70
- > Like before, this rule monitors if the average CPU usage for the last 5 minutes exceeds 70%.
- > Aggregation granularity

Reference:

<https://docs.microsoft.com/en-us/azure/azure-monitor/platform/alerts-metric-overview>

NEW QUESTION 97

- (Exam Topic 4)

You have a web app hosted on Azure App Service. The web app stores data in an Azure SQL database. You need to generate an alert when there are 10,000 simultaneous connections to the database. The solution must minimize development effort.

Which option should you select in the Diagnostics settings of the database?

- A. Send to Log Analytics
- B. Stream to an event hub
- C. Archive to a storage account

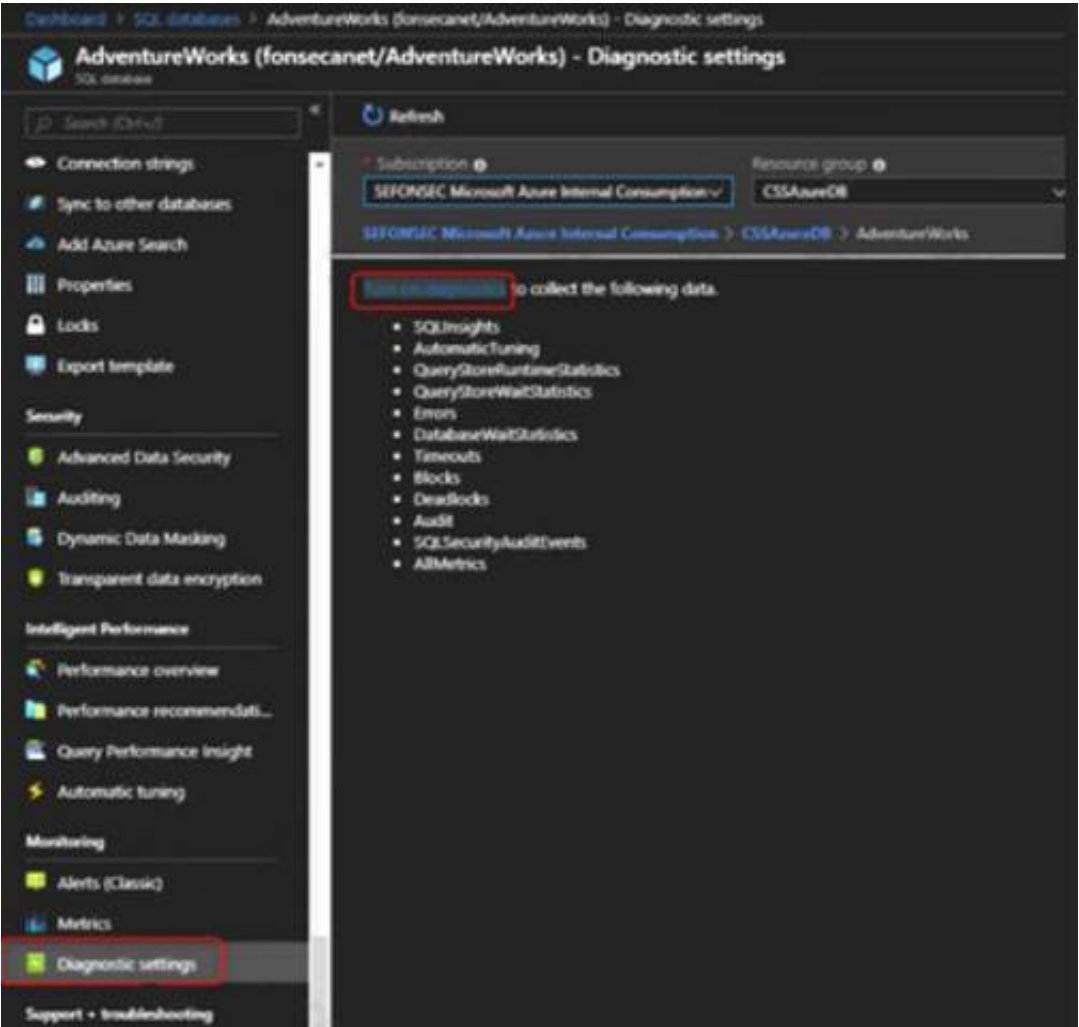
Answer: A

Explanation:

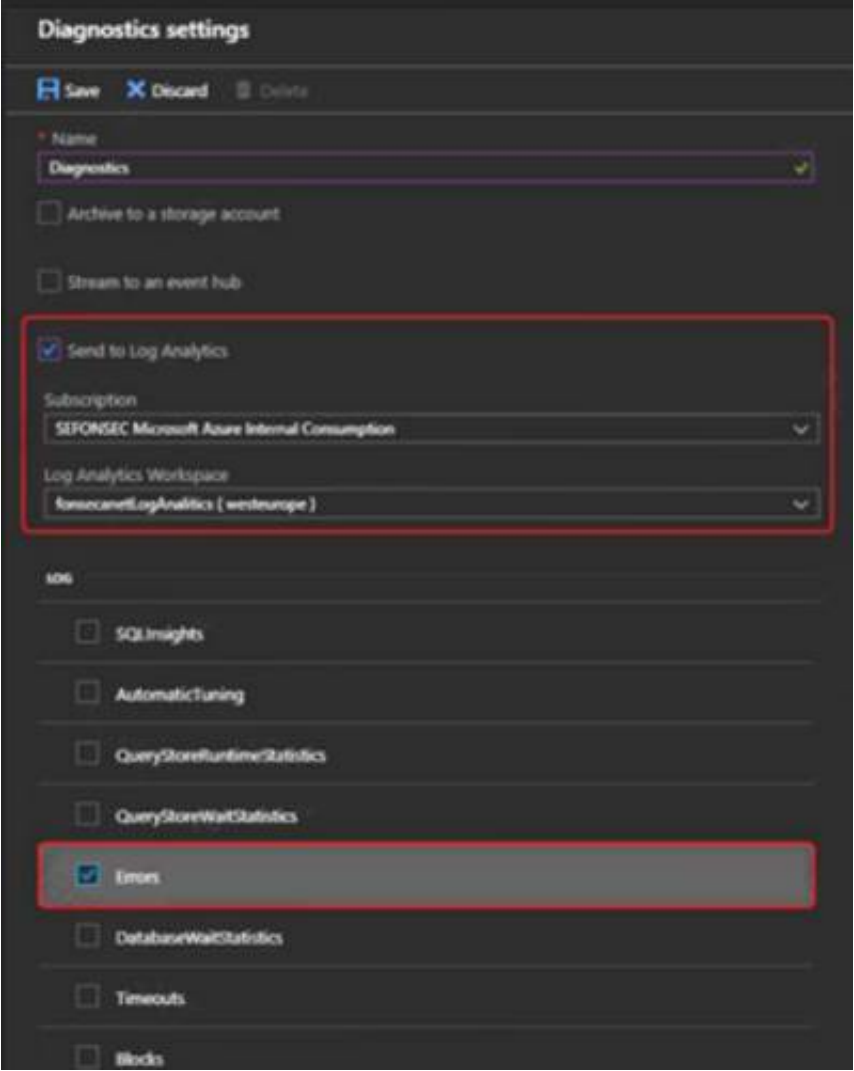
ENABLE DIAGNOSTICS TO LOG ANALYTICS

This configuration is done PER DATABASE

* 1. Click on Diagnostics Settings and then Turn On Diagnostics Graphical user interface, text Description automatically generated



* 2. Select to Send to Log Analytics and select the Log Analytics workspace. For this sample I will selected only Errors Graphical user interface Description automatically generated with medium confidence



Reference:
<https://techcommunity.microsoft.com/t5/azure-database-support-blog/azure-sql-db-and-log-analytics-better-together>

NEW QUESTION 98

- (Exam Topic 4)

Your company uses cloud-hosted Jenkins for builds.

You need to ensure that Jenkins can retrieve source code from Azure Repos.

Which three actions should you perform? Each correct answer presents part of the solution NOTE: Each correct answer selection is worth one point

- A. Add the Team Foundation Server (TFS) plug-in to Jenkins.
- B. Create a personal access token m your Azure DevOps account.
- C. Create a webhook in Jenkins.
- D. Add a domain to your Jenkins account.
- E. Create a service hook m Azure DevOps.

Answer: ABE

Explanation:

References:

<https://blogs.msdn.microsoft.com/devops/2017/04/25/vsts-visual-studio-team-services-integration-with-jenkins/>
<http://www.aisoftwarellc.com/blog/post/how-to-setup-automated-builds-using-jenkins-and-visual-studio-team-foundat>

NEW QUESTION 101

- (Exam Topic 4)

You are deploying a server application that will run on a Server Core installation of Windows Server 2019. You create an Azure key vault and a secret. You need to use the key vault to secure API secrets for third-party integrations.

Which three actions should you perform? Each correct answer presents part of the solution. NOTE: Each correct selection is worth one point.

D18912E1457D5D1DDCBD40AB3BF70D5D

- A. Configure RBAC for the key vault.
- B. Modify the application to access the key vault.
- C. Configure a Key Vault access policy.
- D. Deploy an Azure Desired State Configuration (DSC) extension.
- E. Deploy a virtual machine that uses a system-assigned managed identity.

Answer: BCE

Explanation:

BE: An app deployed to Azure can take advantage of Managed identities for Azure resources, which allows the app to authenticate with Azure Key Vault using Azure AD authentication without credentials (Application ID and Password/Client Secret) stored in the app.

- Select Add Access Policy.
- Open Secret permissions and provide the app with Get and List permissions.
- Select Select principal and select the registered app by name. Select the Select button.
- Select OK.
- Select Save.
- Deploy the app. References:

<https://docs.microsoft.com/en-us/aspnet/core/security/key-vault-configuration> <https://docs.microsoft.com/en-us/azure/key-vault/general/tutorial-net-virtual-machine>

NEW QUESTION 103

- (Exam Topic 4)

Note: This question is part of a series of questions that present the same scenario. Each question in the series contains a unique solution that might meet the stated goals. Some question sets might have more than one correct solution, while others might not have a correct solution.

After you answer a question in this section, you will NOT be able to return to it. As a result, these questions will not appear in the review screen.

Your company uses Azure DevOps to manage the build and release processes for applications. You use a Git repository for applications source control.

You need to implement a pull request strategy that reduces the history volume in the master branch. Solution: You implement a pull request strategy that uses squash merges.

Does this meet the goal?

- A. Yes
- B. No

Answer: A

NEW QUESTION 108

- (Exam Topic 4)

Note: This question is part of a series of questions that present the same scenario. Each question in the series contains a unique solution that might meet the stated goals. Some question sets might have more than one correct solution, while others might not have a correct solution.

After you answer a question in this section, you will NOT be able to return to it. As a result, these questions will not appear in the review screen.

You integrate a cloud-hosted Jenkins server and a new Azure DevOps deployment

You need Azure DevOps to send a notification to Jenkins when a developer commits changes to a branch in Azure Repos.

Solution: You create a service hook subscription that uses the code pushed event. Does this meet the goal?

- A. Yes
- B. NO

Answer: A

Explanation:

You can create a service hook for Azure DevOps Services and TFS with Jenkins. References:

<https://docs.microsoft.com/en-us/azure/devops/service-hooks/services/jenkins>

NEW QUESTION 111

- (Exam Topic 4)

You manage projects by using Azure Boards.

You have a current work item name itemA that is dependant on a work item named item3. You need to define the dependency for itemA.

What should you do in the web portal for Azure DevOps?

- A. From Backlogs, open the context menu, select Add link and then select item3. Set Link type to Related and add the ID of itemA
- B. From itemA open the Links tab, and then select Add link
- C. Set Link type to Successor and add the ID of itemB.
- D. From Queries, open the context menu, select Add link, and then select Existing item
- E. Set Link type to Affected By and add the ID of itemB.
- F. From itemA, open the Links tab, and then select Add link
- G. Set Link type to References and add the ID of itemB.

Answer: B

NEW QUESTION 116

- (Exam Topic 4)

Your company uses Azure DevOps to manage the build and release processes for applications.

You use a Git repository for applications source control.

You plan to create a new branch from an existing pull request. Later, you plan to merge the new branch and the target branch of the pull request.

You need to use a pull request action to create the new branch. The solution must ensure that the branch uses only a portion of the code in the pull request.

Which pull request action should you use?

- A. Set as default branch
- B. Approve with suggestions
- C. Cherry-pick
- D. Reactivate
- E. Revert

Answer: C

Explanation:

Cherry-pick a pull request

To copy changes made in a pull request to another branch in your repo, follow these steps:

➤ In a completed pull request, select Cherry-pick, or for an active pull request, select Cherry-pick from the ... menu. Cherry-picking a pull request in this way creates a new branch with the copied changes. Merge into a target branch in a second pull request.

➤ In Target branch, enter the branch you want to merge the copied changes.

➤ In Topic branch name, enter a new branch to contain the copied changes, then select Cherry-pick.

➤ Select Create pull request to merge the topic branch into the target branch to complete the cherry-pick. Reference: <https://docs.microsoft.com/en-us/azure/devops/repos/git/pull-requests>

NEW QUESTION 119

- (Exam Topic 4)

You use GitHub for source control and project-related discussions.

You receive a notification when an entry is made to any team discussion.

You need to ensure that you receive email notifications only for discussions in which you commented or in which you are mentioned.

Which two Notifications settings should you clear? Each correct answer presents part of the solution. NOTE: Each correct selection is worth one point.

- A. Participating
- B. Automatically watch repositories
- C. Automatically watch teams
- D. Watching

Answer: BD

NEW QUESTION 122

- (Exam Topic 4)

Your company uses Azure Artifacts for package management.

You need to configure an upstream source in Azure Artifacts for Python packages. Which repository type should you use as an upstream source?

- A. PyPI
- B. npmjs.org
- C. Maven Central
- D. third-party trusted Python

Answer: A

Explanation:

Get started with Python packages in Azure Artifacts Create a feed

➤ Select Artifacts (in the left navigation of your Azure DevOps project).

➤ On the Artifacts page, select Create Feed.

➤ In the Create new feed dialog box:

➤ In the Name field, give the feed a name.

PyPI is the default repository name for twine, which is a tool for publishing Python packages. Reference:

<https://docs.microsoft.com/en-us/azure/devops/artifacts/quickstarts/python-packages>

NEW QUESTION 127

- (Exam Topic 4)

You have an Azure DevOps project that contains a build pipeline. The build pipeline uses approximately 50 open source libraries.

You need to ensure that the project can be scanned for known security vulnerabilities in the open source libraries.

What should you do? To answer, select the appropriate options in the answer area. NOTE: Each correct selection is worth one point.

Object to create:

A build task

A deployment task

An artifacts repository

Service to use:

WhiteSource Bolt

Bamboo

CMake

Chef

- A. Mastered
- B. Not Mastered

Answer: A

Explanation:

Box 1: A Build task Trigger a build
You have a Java code provisioned by the Azure DevOps demo generator. You will use WhiteSource Bolt extension to check the vulnerable components present in this code.

- > Go to Builds section under Pipelines tab, select the build definition WhiteSourceBolt and click on Queue to trigger a build.
- > To view the build in progress status, click on ellipsis and select View build results.

Box 2: WhiteSource Bolt
WhiteSource is the leader in continuous open source software security and compliance management. WhiteSource integrates into your build process, irrespective of your programming languages, build tools, or development environments. It works automatically, continuously, and silently in the background, checking the security, licensing, and quality of your open source components against WhiteSource constantly-updated denitive database of open source repositories.
References: <https://www.azuredevopslabs.com/labs/vstsextend/whitesource/>

NEW QUESTION 129

- (Exam Topic 4)
You need to configure access to Azure DevOps Agent pools to meet the forwarding requirements:

- Use a project agent pool when authoring build release pipelines.
- View the agent pool and agents of the organization.
- Use the principle of least privilege.

Which role memberships are required for the Azure 0e%Oos organization and the project? To answer, drag the appropriate role membership to the correct targets. Each role membership may be used once, more than once, or not at all. You may need to drag the split bar between panes or scroll to content
NOTE: Each correct selection is worth one point.

Roles

Administrator

Reader

Service Account

User

Answer Area

Organization:

Project:

- A. Mastered
- B. Not Mastered

Answer: A

Explanation:

project level role: UserOrganization level role: Reader
References: <https://docs.microsoft.com/en-us/azure/devops/pipelines/agents/pools-queues>

NEW QUESTION 130

- (Exam Topic 4)
You have a virtual machine that runs Windows Server 2019 and is managed by using Desired State Configuration (DSC).
You have the following DSC configuration.

```
configuration WebConfiguration
{
    File WebsiteContent {
        Ensure          = 'Present'
        SourcePath       = 'c:\test\index.htm'
        DestinationPath  = 'c:\inetpub\wwwroot'
        DependsOn        = '[WindowsFeature]Web-Server'
    }

    WindowsFeature Web-Server
    {
        Ensure = 'Present'
        Name   = 'Web-Server'
    }
}
```

You have the following Local Configuration Manager (LCM) configuration.

```
LocalConfigurationManager
{
    ConfigurationMode = "ApplyAndMonitor"
    RefreshFrequencyMins = 30
    ConfigurationModeFrequencyMins = 60
    RefreshMode = 'Push'
}
```

For each of the following statements, select Yes if the statement is true. Otherwise, select No. NOTE: Each correct selection is worth one point.

Statements	Yes	No
The Index.htm file will be copied to the C:\Test folder before the Web-Server Windows feature is installed.	<input type="radio"/>	<input type="radio"/>
If manual changes are made to the configuration of the virtual machine, the configuration will reapply automatically.	<input type="radio"/>	<input type="radio"/>
If the Web-Server Windows feature is uninstalled from the virtual machine, the discrepancy will be reported in a log entry within 60 minutes.	<input type="radio"/>	<input type="radio"/>

- A. Mastered
- B. Not Mastered

Answer: A

Explanation:

No "DependsOn" are defined
No "Mode" is Apply and Monitor
Yes "ConfigurationModeFreqMin : 60"


ConfigurationModeFreqMin : How often, in minutes, the current configuration is checked and applied. This property is ignored if the ConfigurationMode property is set to ApplyOnly.
<https://docs.microsoft.com/en-us/powershell/dsc/managing-nodes/metaconfig?view=dsc-1.1> <https://docs.microsoft.com/en-us/powershell/dsc/configurations/resource-depends-on?view=dsc-1.1>

NEW QUESTION 132

- (Exam Topic 4)
You create an alert rule in Azure Monitor as shown in the following exhibit.

Create rule

Rules management




RESOURCE

ASP-9bb7

Select

HIERARCHY


Contoso > CoreApp1



CONDITION

Whenever the Activity Log has an event with Category = 'Administrative', Signal name = 'All Administrative operations', Status = 'failed'

Add



ACTIONS GROUPS (optional)

Action group name


Application Insights Smart Detection


Contain actions

2 Email Azure Resource Manager Role(s)

Add

Create

 Azure Alerts are currently limited to either 2 metric, 1 log, or 1 activity log signal per alert rule. To alert on more signals, please create additional alert rules.

 Action rules (preview) allows you to define actions at scale as well as suppress actions. Learn more about this functionality by clicking on this banner.

Which action will trigger an alert?

- A. a failed attempt to delete the ASP-9bb7 resource
B. a change to a role assignment for the ASP-9bb7 resource
C. a successful attempt to delete the ASP-9bb7 resource
D. a failed attempt to scale up the ASP-9bb7 resource

Answer: A

NEW QUESTION 136

- (Exam Topic 4)

Your company has an Azure DevOps project that produces Node Package Manager (npm) packages. Multiple projects consume the packages.

You need to minimize the amount of disk space used by older packages in Azure Artifacts. What should you modify?

- A. the retention settings of the project's pipeline
B. the retention settings of the project's release
C. the retention settings of the project's tests
D. the retention settings of the company pipeline

Answer: B

Explanation:

To minimize the amount of disk space used by older packages in Azure Artifacts, you should modify the retention settings of the project's release. This can be done by navigating to the project's release settings and adjusting the retention policy. For more information, please refer to the [Microsoft documentation](#).

NEW QUESTION 138

- (Exam Topic 4)

You use GitHub for source control of .NET applications.

You need to deploy a documentation solution that meets the following requirements:

- Documents will be written in Markdown as developers make code changes
- Changes to the documents will trigger the recompilation of a static website.
- Users will access the documents from the static websites
- Documents will be stored in a GitHub repository

Which two tools can you use to compile the website? Each correct answer presents a complete solution.

- A. Jekyll
- B. Medium
- C. caret
- D. WordPress
- E. DocFX

Answer: AE

Explanation:

A. Jekyll is a static site generator that can be used to generate a static website from Markdown files stored in a GitHub repository. Jekyll supports the use of Markdown for writing documentation, and it can automatically recompile the website whenever changes are made to the documentation.

E. DocFX is another tool that can be used to compile a static website from Markdown files stored in a GitHub repository. It is an open-source tool that can be used to generate API documentation, reference documentation, and other types of documentation from source code and other files. DocFX supports the use of

Markdown for writing documentation and it can automatically recompile the website whenever changes are made to the documentation.

NEW QUESTION 142

- (Exam Topic 4)

Note: This question is part of a series of questions that present the same scenario. Each question in the series contains a unique solution that might meet the stated goals. Some question sets might have more than one correct solution, while others might not have a correct solution.

After you answer a question in this section, you will NOT be able to return to it. As a result, these questions will not appear in the review screen.

You plan to update the Azure DevOps strategy of your company.

You need to identify the following issues as they occur during the company's development process:

- Licensing violations
- Prohibited libraries

Solution: You implement continuous integration. Does this meet the goal?

- A. Yes
- B. No

Answer: A

Explanation:

WhiteSource is the leader in continuous open source software security and compliance management. WhiteSource integrates into your build process, irrespective of your programming languages, build tools, or development environments. It works automatically, continuously, and silently in the background, checking the security, licensing, and quality of your open source components against WhiteSource constantly-updated denitive database of open source repositories.

Reference: <https://azuredevopslabs.com/labs/vstsextend/whitesource/>

NEW QUESTION 145

- (Exam Topic 4)

You have a private GitHub repository.

You need to display the commit status of the repository on Azure Boards.

What should you do first?

- A. Create a GitHub action in GitHub.
- B. Add the Azure Pipelines app to the GitHub repository.
- C. Configure multi-factor authentication (MFA) for your GitHub account.
- D. Add the Azure Boards app to the repository.

Answer: D

Explanation:

To connect Azure Boards to GitHub.com, connect and configure from Azure Boards. Or, alternatively, install and configure the Azure Boards app from GitHub. Both methods have been streamlined and support authenticating and operating via the app rather than an individual.

Note (see step 4 below): Add a GitHub connection:





- Sign into Azure Boards.
- Choose (1) Project Settings, choose (2) GitHub connections and then (3) Connect your GitHub account.
- If this is your first time connecting to GitHub from Azure Boards, you will be asked to sign in using your GitHub credentials. Choose an account for which you are an administrator for the repositories you want to connect to.
- The Add GitHub Repositories dialog automatically displays and selects all GitHub.com repositories for which you are an administrator. Unselect any repositories that you don't want to participate in the integration.

Add GitHub repositories

Add the GitHub repositories you want to use with your Azure Boards.

Filter by keywords

Viewing 4, 4 selected

- ☒  JamalHart/fabrikam- apps-2
- ☒  JamalHart/fabrikam- demo
- ☒  JamalHart/fabrikam- open-source
- ☒  JamalHart/fabrikam- suite

Save

Reference:

<https://docs.microsoft.com/en-us/azure/devops/boards/github/connect-to-github>

NEW QUESTION 147

- (Exam Topic 4)

Your company implements an Agile development methodology. You plan to implement retrospectives at the end of each sprint.

Which three questions should you include? Each correct answer presents part of the solution. NOTE: Each correct selection is worth one point.

- A. Who performed well?
- B. Who should have performed better?
- C. What could have gone better?
- D. What went well?
- E. What should we try next?

Answer: CDE

Explanation:

<https://www.scrum.org/resources/what-is-a-sprint-retrospective>

NEW QUESTION 152

- (Exam Topic 4)

Note: This question is part of a series of questions that present the same scenario. Each question in the series contains a unique solution that might meet the stated goals. Some question sets might have more than one correct solution, while others might not have a correct solution.

After you answer a question in this section, you will NOT be able to return to it. As a result, these questions will not appear in the review screen.

You plan to update the Azure DevOps strategy of your company.

You need to identify the following issues as they occur during the company's development process:

- > Licensing violations
- > Prohibited libraries

Solution: You implement automated security testing. Does this meet the goal?

- A. Yes
- B. No

Answer: B

Explanation:

Instead use implement continuous integration.

Note: WhiteSource is the leader in continuous open source software security and compliance management. WhiteSource integrates into your build process, irrespective of your programming languages, build tools, or development environments. It works automatically, continuously, and silently in the background, checking the security, licensing, and quality of your open source components against WhiteSource constantly-updated denitive database of open source repositories.

Reference: <https://azuredevopslabs.com/labs/vstsextend/whitesource/>

NEW QUESTION 153

- (Exam Topic 4)

You have the following Azure policy.

```
if: {
  allof: [
    {
      "field": "type",
      "equals": "Microsoft.Storage/storageAccounts"
    },
    {
      "field": "Microsoft.Storage/storageAccounts/supportsHttpsTrafficOnly",
      "notEquals": "true"
    }
  ]
},
then: {
  effect: "deny"
}
```

You assign the policy to the Tenant root group. What is the effect of the policy?

- A. prevents all http traffic to existing Azure Storage accounts
- B. ensures that all traffic to new Azure Storage accounts is encrypted
- C. prevents HTTPS traffic to new Azure Storage accounts when the accounts are accessed over the Internet
- D. ensures that all data for new Azure Storage accounts is encrypted at rest

Answer: B

Explanation:

Denies non HTTPS traffic.

NEW QUESTION 157

- (Exam Topic 4)

You manage the Git repository for a large enterprise application. You need to minimize the data size of the repository.

How should you complete the commands? To answer, select the appropriate options in the answer area. NOTE: Each correct selection is worth one point.

Answer Area

git gc	--aggressive --auto --force --no-prune	now
git	merge prune rebase reset	--expire now

- A. Mastered
- B. Not Mastered

Answer: A

Explanation:

Box 1: --aggressive

Cleanup unnecessary files and optimize the local repository: git gc --aggressive

Box 2: prune

Prune all unreachable objects from the object database: git prune

Reference: <https://gist.github.com/Zoramite/2039636>

NEW QUESTION 162

- (Exam Topic 4)

You plan to implement a CI/CD strategy for an Azure Web App named az400-11566895-main. You need to configure a staging environment for az400-11566895-main.

To complete this task, sign in to the Microsoft Azure portal.

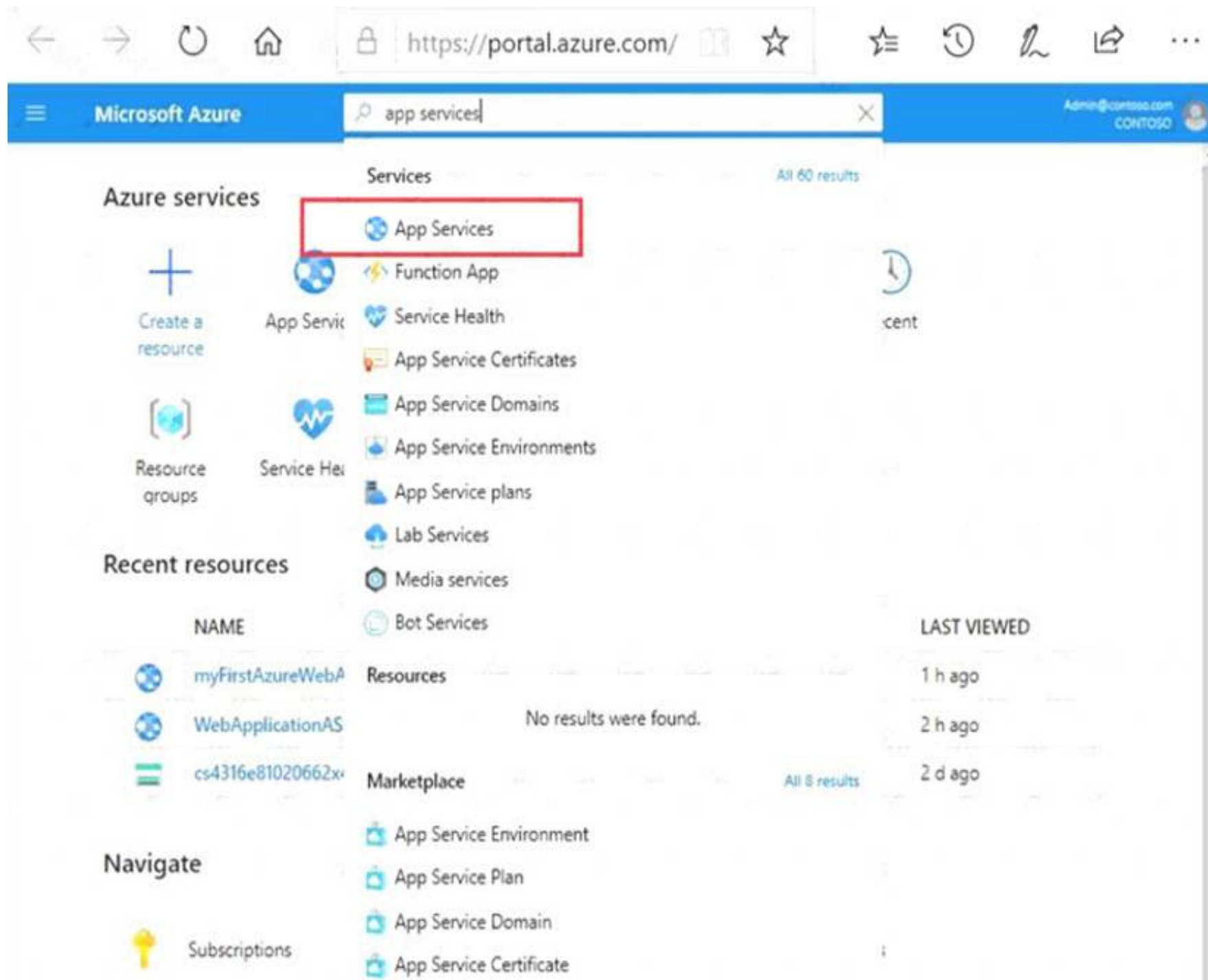
- A. Mastered
- B. Not Mastered

Answer: A

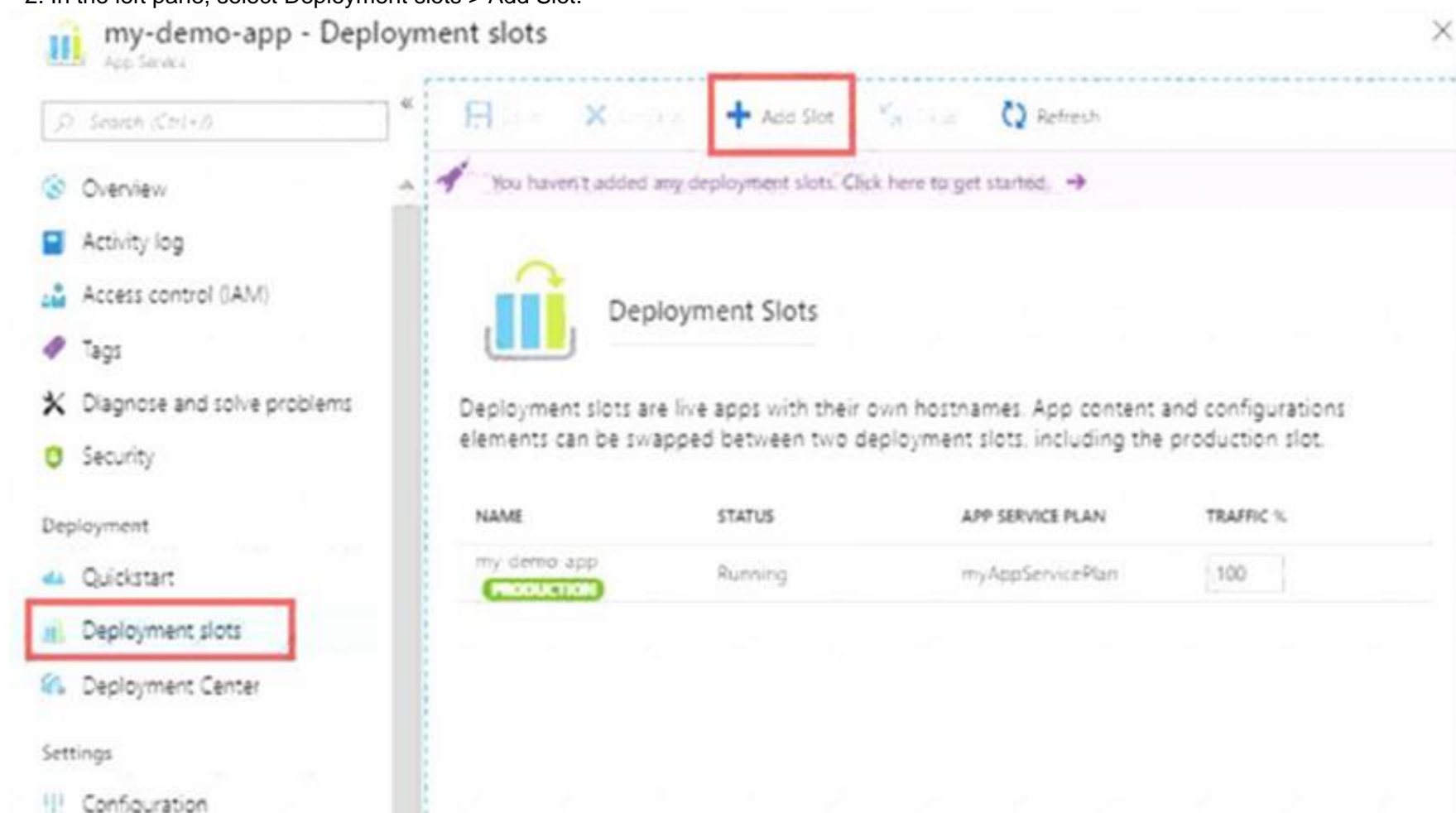
Explanation:

Add a slot

* 1. In the Azure portal, search for and select App Services and select your app az400-11566895-main.



* 2. In the left pane, select Deployment slots > Add Slot.



* 3. In the Add a slot dialog box, give the slot a name, and select whether to clone an app configuration from another deployment slot. Select Add to continue.

Add a slot

Name

staging

Clone settings from:

Do not clone settings

Add

Close

* 4. After the slot is added, select Close to close the dialog box. The new slot is now shown on the Deployment slots page.

my-demo-app - Deployment slots

Search (Ctrl+F)

Overview

Activity log

Access control (IAM)

Tags

Diagnose and solve problems

Security

Deployment

Quickstart

Deployment slots

Deployment Center

Settings

Configuration

Deployment Slots

Deployment slots are live apps with their own hostnames. App content and configurations elements can be swapped between two deployment slots, including the production slot.

NAME	STATUS	APP SERVICE PLAN	TRAFFIC %
my-demo-app	Running	myAppServicePlan	100
my-demo-app staging	Running	myAppServicePlan	0

Reference:

<https://docs.microsoft.com/en-us/azure/app-service/deploy-staging-slots>

NEW QUESTION 164

- (Exam Topic 4)

You administer an Azure DevOps project that includes package feeds.

You need to ensure that developers can unlist and deprecate packages. The solution must use the principle of least privilege.

Which access level should you grant to the developers?

- A. Collaborator
- B. Contributor
- C. Owner

Answer: B

Explanation:

Feeds have four levels of access: Owners, Contributors, Collaborators, and Readers. Owners can add any type of identity-individuals, teams, and groups-to any access level.

Permission	Reader	Collaborator	Contributor	Owner
List and restore/install packages	✓	✓	✓	✓
Save packages from upstream sources		✓	✓	✓
Push packages			✓	✓
Unlist/deprecate packages			✓	✓
Promote a package to a view			✓	✓
Delete/unpublish package				✓
Edit feed permissions				✓

Reference:
<https://docs.microsoft.com/en-us/azure/devops/artifacts/feeds/feed-permissions>

NEW QUESTION 167

- (Exam Topic 4)
You need to create a notification if the peak average response time of an Azure web app named az400-9940427-main is more than five seconds when evaluated during a five-minute period. The notification must trigger the “https://contoso.com/notify” webhook.
To complete this task, sign in to the Microsoft Azure portal.

- A. Mastered
- B. Not Mastered

Answer: A

Explanation:

- * 1. Open Microsoft Azure Portal
- * 2. Log into your Azure account and go to App Service and look under Monitoring then you will see Alert.
- * 3. Select Add an alert rule
- * 4. Configure the alert rule as per below and click Ok. Source: Alert on Metrics
Resource Group: az400-9940427-main Resource: az400-9940427-main Threshold: 5
Period: Over the last 5 minutes Webhook: https://contoso.com/notify
Graphical user interface, text, application Description automatically generated

Add an alert rule

* Threshold ⓘ

1

bytes/second

* Period ⓘ

Over the last 5 minutes

▼

Email service and co-administrators

☐

Additional administrator email

Additional administrator email

Webhook ⓘ

HTTP or HTTPS endpoint to route alerts to

[Learn more about configuring webhooks](#)

OK

Reference:
<https://azure.microsoft.com/es-es/blog/webhooks-for-azure-alerts/>

NEW QUESTION 172

- (Exam Topic 4)

You have an Azure subscription that contains two resource groups named ContosoRG and ContosoDev, an Azure data factory named Contoso Data Factory, and a release pipeline

in Azure Pipelines named Pipeline1.

You plan to deploy Contoso Data Factory to ContosoRG by using Pipeline1.

You add the Azure Resource Manager (ARM) template deployment task shown the following exhibit.

ARM template deployment ⓘ View YAML Remove

Task version 3.* ▼

Display name *
Deploy the Contoso Data Factory

Azure Details ^

Deployment scope * ⓘ
Resource Group ▼

Azure Resource Manager connection * ⓘ | Manage [🔗](#)
Microsoft Azure Sponsorship ▼ 🔄
ⓘ Scoped to subscription 'Microsoft Azure Sponsorship'

Subscription * ⓘ
Microsoft Azure Sponsorship ▼ 🔄

Action * ⓘ
Create or update resource group ▼

Resource group * ⓘ
ContosoRG ▼ 🔄

Location * ⓘ
East US ▼ 🔄

Template ^

Template location *
Linked artifact ▼

Template * ⓘ
\$(System.DefaultWorkingDirectory)/_Contoso-DataFactory-CI ...

Template parameters ⓘ
...

Override template parameters ⓘ
...

Deployment mode * ⓘ
Complete ▼

The **[answer choice]** setting must be changed to prevent the modification of existing databases and web apps in ContosoRG.

- Action
- Template location
- Deployment mode
- Deployment scope

Pipeline1 will retrieve the ARM template from the **[answer choice]**.

- output of the continuous integration build
- location specified in the Linked artifact variable
- default branch of the Git repository of Contoso Data Factory

A. Mastered

B. Not Mastered

Answer: A

Explanation:

Deployment Mode

Location specified in the Linked artifact variable

NEW QUESTION 173

- (Exam Topic 4)

You are integrating an Azure Boards project and a GitHub repository. You need to authenticate Azure Boards to GitHub.

Which two authentication methods can you use? Each correct answer presents a complete solution. NOTE: Each correct selection is worth one point.

- A. a trusted root certificate
- B. a publisher certificate
- C. Azure Active Directory (Azure AD)
- D. GitHub user credentials
- E. a personal access token (PAT)

Answer: CD

NEW QUESTION 178

- (Exam Topic 4)

You are creating a YAML-based Azure pipeline to deploy an Azure Data factory instance that has the following requirements;

- If a Data Factory instance exists already, the instance must be overwritten.
- No other resources in a resource group named Fabrikam must be affected.

How should you complete the code? To answer, select the appropriate options in the answer area. NOTE: Each correct selection is worth one point.

Answer Area

```
steps:
- task: AzureResourceManagerTemplateDeployment@3
  inputs:
    deploymentScope: 'Resource Group'
    azureResourceManagerConnection: 'Fabrikam Corporate(a41fb3ed-a2aa-42f0-a7ac-8fcc6ef0c5db)'
    subscriptionId: 'a41de0ed-a2aa-42f0-a7ac-8fcc6ef0c5db'
    action: 
    resourceGroupName: 'Fabrikam'
    location: 'West US'
    templateLocation: 'Linked artifact'
    deploymentMode: 
```

- A. Mastered
- B. Not Mastered

Answer: A

Explanation:

Answer Area

```
steps:
- task: AzureResourceManagerTemplateDeployment@3
  inputs:
    deploymentScope: 'Resource Group'
    azureResourceManagerConnection: 'Fabrikam Corporate(a41fb3ed-a2aa-42f0-a7ac-8fcc6ef0c5db)'
    subscriptionId: 'a41de0ed-a2aa-42f0-a7ac-8fcc6ef0c5db'
    action: 'Create Or Update Resource Group'
    resourceGroupName: 'Fabrikam'
    location: 'West US'
    templateLocation: 'Linked artifact'
    deploymentMode: 'Incremental'
```

NEW QUESTION 181

- (Exam Topic 4)

You are designing YAML-based Azure pipelines for the apps shown in the following table.

Name	Platform	Release requirements
App1	Azure virtual machine	Replace a fixed set of existing instances of the previous version of App1 with instances of the new version of the app in each iteration.
App2	Azure Kubernetes Service (AKS) cluster	Roll out a limited deployment of the new version of App2 to validate the functionality of the app. Once testing is successful, expand the rollout.

You need to configure the YAML strategy value for each app. The solution must minimize app downtime. Which value should you configure for each app? To answer, select the appropriate options in the answer area. NOTE: Each correct selection is worth one point.

App1:

▼

canary

rolling

runonce

App2:

▼

canary

rolling

runonce

- A. Mastered
- B. Not Mastered

Answer: A

Explanation:

App1: rolling
A rolling deployment replaces instances of the previous version of an application with instances of the new version of the application on a fixed set of virtual machines (rolling set) in each iteration.
App2: canary
Canary deployment strategy is an advanced deployment strategy that helps mitigate the risk involved in rolling out new versions of applications. By using this strategy, you can roll out the changes to a small subset of servers first. As you gain more confidence in the new version, you can release it to more servers in your infrastructure and route more traffic to it. Reference:
<https://docs.microsoft.com/en-us/azure/devops/pipelines/process/deployment-jobs>

NEW QUESTION 182

- (Exam Topic 4)
Your company plans to implement a new compliance strategy that will require all Azure web apps to be backed up every five hours. You need to back up an Azure web app named az400-11566895-main every five hours to an Azure Storage account in your resource group. To complete this task, sign in to the Microsoft Azure portal.

- A. Mastered
- B. Not Mastered

Answer: A

Explanation:

With the storage account ready, you can configure backs up in the web app or App Service.
➤ Open the App Service az400-11566895-main, which you want to protect, in the Azure Portal and browse to Settings > Backups. Click Configure and a Backup Configuration blade should appear.
➤ Select the storage account.
➤ Select the container.
➤ If you want to schedule backups, then set Scheduled Backup to On and configure a schedule: every five hours
➤ Select your retention. Note that 0 means never delete backups.
➤ Decide if at least one backup should always be retained.
➤ Choose if any connected databases should be included in the web app backup.
➤ Click Save to finalize the backup configuration.

Backup Configuration

Backup Storage

Select the target container to store your app backup.

Storage Settings

petri

Storage Account: petriaspbackup.blob.core.windows.net

Backup Schedule

Configure the schedule for your app backup.

Scheduled backup

On

Off

Backup Every

1

Days

Hours

Start backup schedule from

2018-01-20

16:31:38

UTC - Coordinated Universal Time

Retention (Days)

3655

Keep at least one backup

No

Yes

Backup Database

Select the databases you to include with your backup. The backup database list is based on the apps configured connection strings.

INCLUDE IN BACKUP

CONNECTION STRING NAME

DATABASE TYPE

Included

defaultConnection

Sql Database

Reference:
<https://petri.com/backing-azure-app-service>

NEW QUESTION 187

- (Exam Topic 4)

You are planning projects for three customers. Each customer's preferred process for work items is shown in the following table.

Customer name	Preferred process
Litware, Inc.	Track product backlog items (PBIs) and bugs on the Kanban board. Break the PBIs down into tasks on the task board.
Contoso, Ltd.	Track user stories and bugs on the Kanban board. Track the bugs and tasks on the task board.
A. Datum Corporation	Track requirements, change requests, risks, and reviews.

The customers all plan to use Azure DevOps for work item management.
Which work item process should you use for each customer? To answer, drag the appropriate work item process to the correct customers. Each work item process may be used once, more than once, or not at all. You may need to drag the split bar between panes or scroll to view content.
NOTE: Each correct selection is worth one point.

Processes

Agile

CMMI

Scrum

XP

Answer Area

Litware

Contoso:

A. Datum:

- A. Mastered
- B. Not Mastered

Answer: A

Explanation:
Box 1: Scrum

Passing Certification Exams Made Easy

visit - <https://www.surepassexam.com>

Choose Scrum when your team practices Scrum. This process works great if you want to track product backlog items (PBIs) and bugs on the Kanban board, or break PBIs and bugs down into tasks on the taskboard.

Box 2: Agile

Choose Agile when your team uses Agile planning methods, including Scrum, and tracks development and test activities separately. This process works great if you want to track user stories and (optionally) bugs on the Kanban board, or track bugs and tasks on the taskboard.

Box 3: CMMI

Choose CMMI when your team follows more formal project methods that require a framework for process improvement and an auditable record of decisions. With this process, you can track requirements, change requests, risks, and reviews.

NEW QUESTION 188

- (Exam Topic 4)

Your company plans to use an agile approach to software development.

You need to recommend an application to provide communication between members of the development team who work in locations around the world. The applications must meet the following requirements:

- Provide the ability to isolate the members of different project teams into separate communication channels and to keep a history of the chats within those channels.
- Be available on Windows 10, Mac OS, iOS, and Android operating systems.
- Provide the ability to add external contractors and suppliers to projects.
- Integrate directly with Azure DevOps. What should you recommend?

- A. Microsoft Project
- B. Bamboo
- C. Microsoft Lync
- D. Microsoft Teams

Answer: D

Explanation:

- Within each team, users can create different channels to organize their communications by topic. Each channel can include a couple of users or scale to thousands of users.
- Microsoft Teams works on Android, iOS, Mac and Windows systems and devices. It also works in Chrome, Firefox, Internet Explorer 11 and Microsoft Edge web browsers.
- The guest-access feature in Microsoft Teams allows users to invite people outside their organizations to join internal channels for messaging, meetings and file sharing. This capability helps to facilitate business-to-business project management.
- Teams integrates with Azure DevOps.

References: <https://searchunifiedcommunications.techtarget.com/definition/Microsoft-Teams>

NEW QUESTION 191

- (Exam Topic 4)

You have an Azure subscription that contains an Azure Active Directory (Azure AD) tenant.

You are configuring a build pipeline in Azure Pipelines that will include a task named Task1. Task1 will authenticate by using an Azure AD service principal.

Which three values should you configure for Task1? Each correct answer presents part of the solution. NOTE: Each correct selection is worth one point.

- A. the object ID
- B. the tenant ID
- C. the app ID
- D. the client secret
- E. the subscription ID

Answer: BCD

Explanation:

Reference:

<https://docs.microsoft.com/en-us/azure/devops/pipelines/library/connect-to-azure>

NEW QUESTION 193

- (Exam Topic 4)

Your company uses a Git repository in Azure Repos to manage the source code of a web application. The master branch is protected from direct updates. Developers work on new features in the topic branches.

Because of the high volume of requested features, it is difficult to follow the history of the changes to the master branch.

You need to enforce a pull request merge strategy. The strategy must meet the following requirements:

- Consolidate commit histories
- Merge tie changes into a tingle commit

Which merge strategy should you use in the branch policy?

- A. Git fetch
- B. no-fast-forward merge
- C. squash merge
- D. fast-forward merge

Answer: C

Explanation:

Squash merging is a merge option that allows you to condense the Git history of topic branches when you complete a pull request. Instead of each commit on the topic branch being added to the history of the default branch, a squash merge takes all the file changes and adds them to a single new commit on the default branch.

A simple way to think about this is that squash merge gives you just the file changes, and a regular merge gives you the file changes and the commit history.

Note: Squash merging keeps your default branch histories clean and easy to follow without demanding any workflow changes on your team. Contributors to the topic branch work how they want in the topic branch, and the default branches keep a linear history through the use of squash merges. The commit history of a master branch updated with squash merges will have one commit for each merged branch. You can step through this history commit by commit to find out exactly when work was done.
References: <https://docs.microsoft.com/en-us/azure/devops/repos/git/merging-with-squash>

NEW QUESTION 197

- (Exam Topic 4)
You have an Azure subscription that contains multiple Azure services. You need to send an SMS alert when scheduled maintenance is planned for the Azure services. Which two actions should you perform? Each correct answer presents part of the solution. NOTE: Each correct selection is worth one point.

A. Create an Azure Service Health alert.
B. Enable Azure Security Center.
C. Create and configure an action group
D. Create and configure an Azure Monitor alert rule

Answer: AD

NEW QUESTION 202

- (Exam Topic 4)
Your company uses Azure DevOps to deploy infrastructures to Azure. Pipelines are developed by using YAML.
You execute a pipeline and receive the results in the web portal for Azure Pipelines as shown in the following exhibit.

FN

Fast Track

+

Overview

Boards

Repos

Pipelines

Pipelines

Environments

Releases

Library

Task groups

Deployment groups

WhiteSource Bolt

Test Plans

Artifacts

Jobs in run #20191120.1

Fast Track

build vm

initialize build

7s

Initialize job

<1s

Checkout

4s

CmdLine

2s

Post-job: Ccheckout

<1s

Finalize Job

<1s

deploy_to_dev

>

deploy_to_dev_server

2s

deploy_to_uat

>

deploy_to_uat_server

2s

Finalize build

Report build status

<1s

initial_build

1 Pool: Azure Pipelines

2 Image: Ubuntu-18.04

3 Agent: Hosted Agent

4 Started: Just now

5 Duration: 7s

6

7 Job preparation parameters

Use the drop-down menus to select the answer choice that completes each statement based on the information presented in the graphic.
NOTE: Each correct selection is worth one point.

The pipeline contains

▼

one stage

two stages

three stages

four stages

five stages

Build_vm contains

▼

one job

two jobs

three jobs

four jobs

five jobs

- A. Mastered
B. Not Mastered

Answer: A

Explanation:

Reference:

<https://dev.to/rajikaimal/azure-devops-ci-cd-yaml-pipeline-4glj>

NEW QUESTION 203

- (Exam Topic 4)

unique solution that might meet the stated goals. Some question sets might have more than one correct solution, while others might not have a correct solution. After you answer a question in this section, you will NOT be able to return to it. As a result these questions will not appear in the review screen.

You integrate a cloud-hosted Jenkins server and a new Azure DevOps deployment.

You need Azure DevOps to send a notification to Jenkins when a developer commits changes to a branch in Azure Repos.

Solution: You create a service hook subscription that uses the build completed event. Does this meet the goal?

A. Yes

B. No

Answer: B

Explanation:

You can create a service hook for Azure DevOps Services and TFS with Jenkins.

However, the service subscription event should use the code pushed event, is triggered when the code is pushed to a Git repository.

NEW QUESTION 207

- (Exam Topic 4)

You have an Azure DevOps project that contains a release pipeline and a Git repository. When a new code revision is committed to the repository, a build and release is triggered.

You need to ensure that release information for the pipeline is added automatically to the work items associated to the Git commit.

What should you do?

A. Modify the Integrations options for the pipeline.

B. Modify the post-deployment conditions for the last stage of the pipeline.

C. Add an agentless job to the pipeline.

D. Modify the service hooks for the project.

Answer: D

Explanation:

Service hooks in Azure DevOps allow you to trigger actions in other tools based on events that occur in your Azure DevOps project. To automatically add release information to work items associated with a Git commit, you would need to configure a service hook that listens for commit events in your Git repository, and then sends the release information to the appropriate work items.

Here's the steps you can follow to set up a service hook for this purpose:

- In your Azure DevOps project, navigate to the project settings by clicking on the gear icon in the top right corner of the page.
- Select "Service Hooks" from the left-hand menu.
- Click on the "New Subscription" button to create a new service hook.
- In the "Event" drop-down menu, select "Code pushed" to trigger the service hook when a new code revision is committed to the repository.
- In the "Actions" section, select the action that you want to take place when the service hook is triggered.

For example, you might use the "Link work items to commits" action to automatically associate work items with the relevant commits.

- Configure the remaining settings as needed, and then click on the "Create" button to create the service hook.

You can find more information on Service hooks in Azure DevOps by following this link <https://docs.microsoft.com/en-us/azure/devops/service-hooks/overview?view=azure-devops>

NEW QUESTION 208

- (Exam Topic 4)

Note: This question is part of a series of questions that present the same scenario. Each question in the series contains a unique solution that might meet the stated goals. Some question sets might have more than one correct solution, while others might not have a correct solution.

After you answer a question in this section, you will NOT be able to return to it. As a result, these questions will not appear in the review screen.

You have an Azure DevOps organization named Contoso and an Azure subscription. The subscription contains an Azure virtual machine scale set named VMSS1 that is configured for autoscaling.

You have a project in Azure DevOps named Project1. Project1 is used to build a web app named App1 and deploy App1 to VMSS1.

You need to ensure that an email alert is generated whenever VMSS1 scales in or out. Solution: From Azure DevOps, configure the Service hooks settings for Project1. Does this meet the goal?

A. Yes

B. No

Answer: B

NEW QUESTION 211

- (Exam Topic 4)

Your company uses a Git source-code repository.

You plan to implement GitFlow as a workflow strategy.

You need to identify which branch types are used for production code and preproduction code in the strategy. Which branch type should you identify for each code type? To answer, select the appropriate options in the answer area.

NOTE: Each correct selection is worth one point.

Answer Area

Production code:	<div>Master Feature Develop</div>
Preproduction code:	<div>Master Feature Develop</div>

- A. Mastered
B. Not Mastered

Answer: A

Explanation:

Box 1: Master

The Master branch contains production code. All development code is merged into master in sometime. Box 2: Develop

The Develop branch contains pre-production code. When the features are finished then they are merged into develop.

Reference:

<https://medium.com/@patrickporto/4-branching-workflows-for-git-30d0aaee7bf>

NEW QUESTION 212

- (Exam Topic 4)

You have an on-premises app named App1 that accesses Azure resources by using credentials stored in a configuration file.

You plan to upgrade App1 to use an Azure service principal.

What is required for App1 to programmatically sign in to Azure Active Directory (Azure AD)?

- A. the application ID, a client secret, and the object ID
B. a client secret, the object ID, and the tenant ID
C. the application ID, a client secret, and the tenant ID
D. the application ID, a client secret, and the subscription ID

Answer: C

Explanation:

<https://docs.microsoft.com/en-us/azure/active-directory/develop/app-objects-and-service-principals> "When you've completed the app registration, you've a globally unique instance of the app (the application object) which lives within your home tenant or directory. You also have a globally unique ID for your app (the app or client ID). In the portal, you can then add secrets or certificates and scopes to make your app work, customize the branding of your app in the sign-in dialog, and more."

NEW QUESTION 215

- (Exam Topic 4)

You need to recommend project metrics for dashboards in Azure DevOps.

Which chart widgets should you recommend for each metric? To answer, drag the appropriate chart widgets to the correct metrics. Each chart widget may be used once, more than once, or not at all. You may need to drag the split bar between panes or scroll to view content.

NOTE: Each correct selection is worth one point.

Chart Widgets

Answer Area

Burndown	The elapsed time from the creation of work items to their completion:	
Cycle Time		
Lead Time	The elapsed time to complete work items once they are active:	
Velocity	The remaining work:	

- A. Mastered
B. Not Mastered

Answer: A

Explanation:

Graphical user interface, text, application, chat or text message Description automatically generated

Box 1: Lead time

Lead time measures the total time elapsed from the creation of work items to their completion. Box 2: Cycle time

Cycle time measures the time it takes for your team to complete work items once they begin actively working on them.

Box 3: Burndown

Burndown charts focus on remaining work within a specific time period. Reference:

<https://docs.microsoft.com/en-us/azure/devops/report/dashboards/velocity-guidance?view=vsts> <https://docs.microsoft.com/en->

us/azure/devops/report/dashboards/cycle-time-and-lead-time?view=vsts <https://docs.microsoft.com/en-us/azure/devops/report/dashboards/configure-burndown-burnup-widgets?view=vs>

NEW QUESTION 219

- (Exam Topic 4)

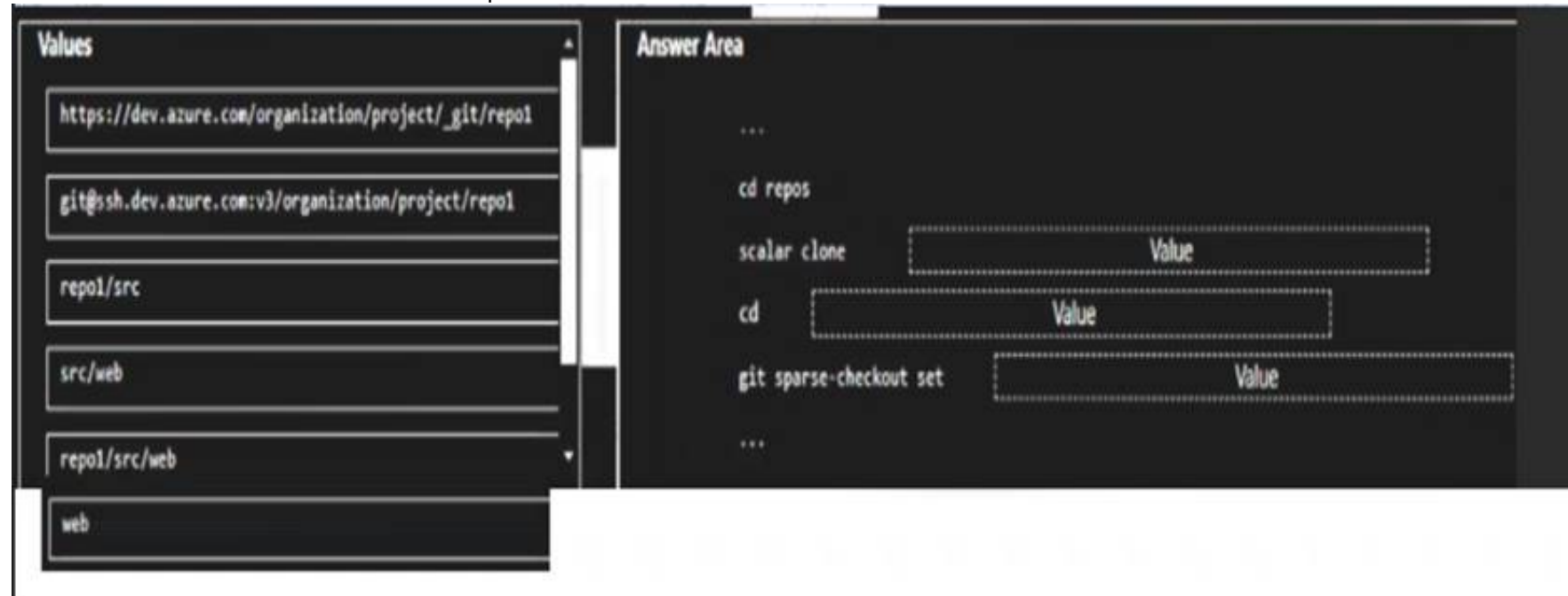
You have an Azure Repos repository named repo1.

You need to clone repo1. The solution must clone only a directory named src/web.

How should you complete the script? To answer, drag the appropriate values to the correct targets. Each value may be used once, more than once, or not at all.

You may need to drag the spirt bar between panes or scroll to view content.

NOTE: Each correct selection is worth one point



The screenshot shows an Azure DevOps interface. On the left, there is a 'Values' pane with a list of options: 'https://dev.azure.com/organization/project/_git/repo1', 'git@ssh.dev.azure.com:v3/organization/project/repo1', 'repo1/src', 'src/web', 'repo1/src/web', and 'web'. On the right, there is an 'Answer Area' with a script template. The script template contains the following lines: '...', 'cd repos', 'scalar clone', 'cd', 'git sparse-checkout set', and '...'. Each of the lines 'scalar clone', 'cd', and 'git sparse-checkout set' has a dashed box next to it labeled 'Value', indicating where a value should be placed.

- A. Mastered
- B. Not Mastered

Answer: A

Explanation:

Text Description automatically generated with medium confidence

NEW QUESTION 222

- (Exam Topic 4)

You configure an Azure Application Insights availability test.

You need to notify the customer services department at your company by email when availability is degraded. You create an Azure logic app that will handle the email and follow up actions.

Which type of trigger should you use to invoke the logic app?

- A. an ApiConnection trigger
- B. a Request trigger
- C. an HTTPWebhook trigger
- D. an HTTP trigger

Answer: C

Explanation:

You can use webhooks to route an Azure alert notification to other systems for post-processing or custom actions. You can use a webhook on an alert to route it to services that send SMS messages, to log bugs, to notify a team via chat or messaging services, or for various other actions.

Reference:

<https://docs.microsoft.com/en-us/azure/azure-monitor/platform/alerts-webhooks>

NEW QUESTION 224

- (Exam Topic 4)

You have a web app hosted on Azure App Service. The web app stores data in an Azure SQL database. You need to generate an alert when there are 10,000 simultaneous connections to the database. The solution must minimize deve4opment effort.

Which option should you select in the Diagnostics settings of the database?

- A. Send to Log Analytics
- B. Archive to m storage account
- C. Stream to an event hub

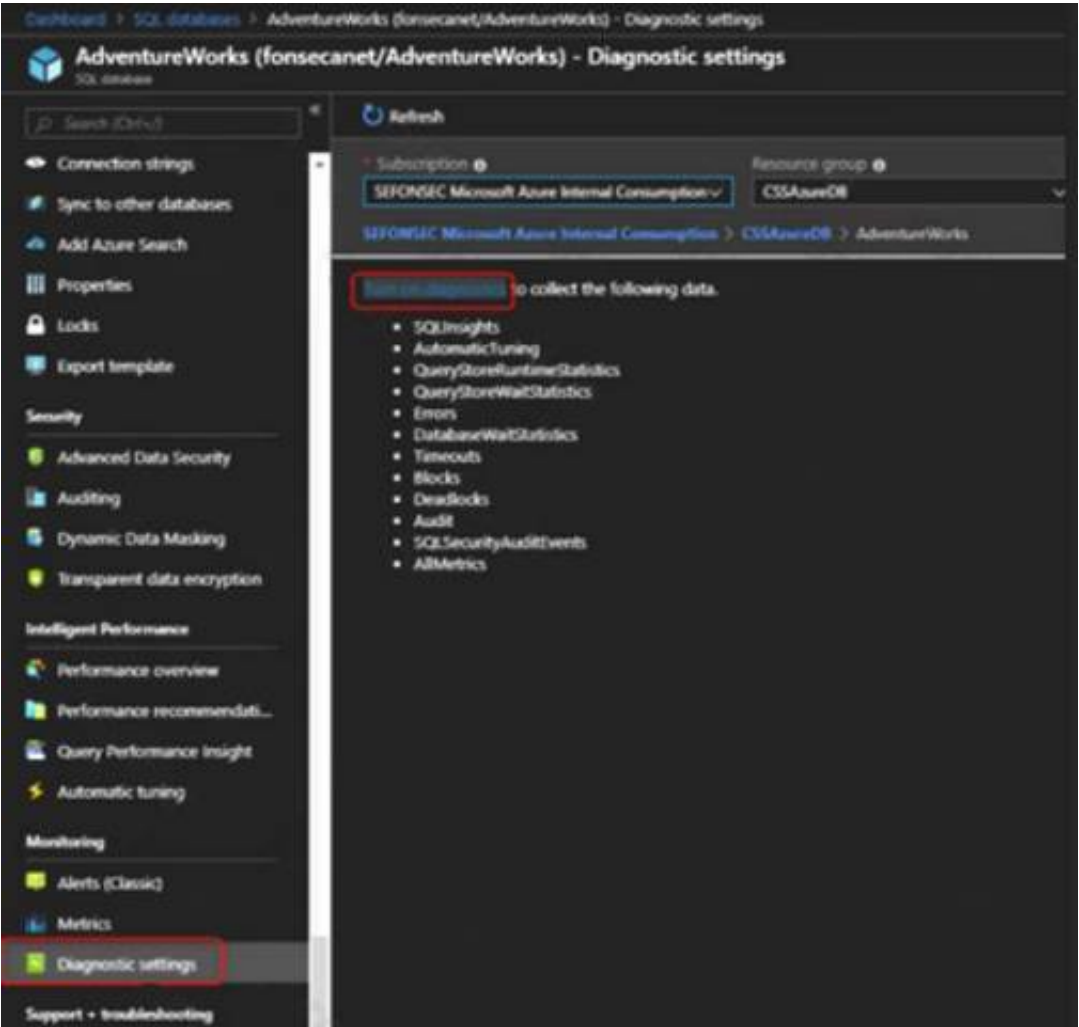
Answer: A

Explanation:

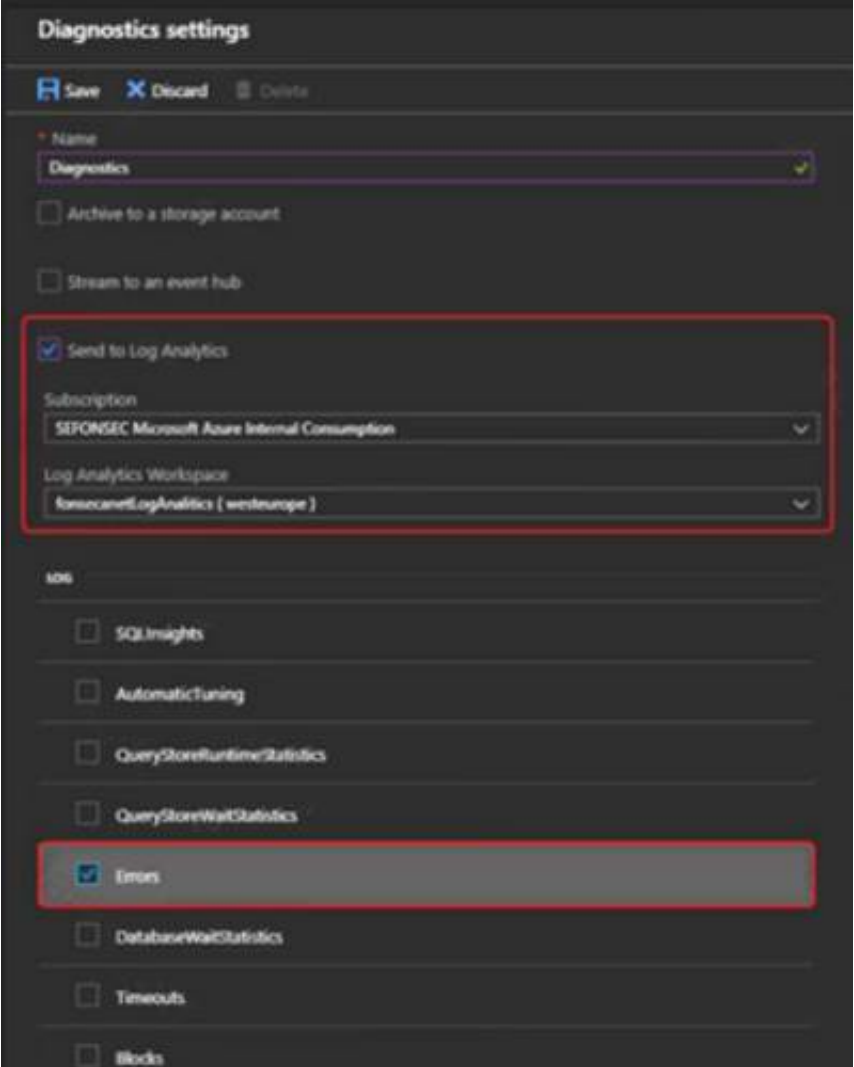
ENABLE DIAGNOSTICS TO LOG ANALYTICS

This configuration is done PER DATABASE

* 1. Click on Diagnostics Settings and then Turn On Diagnostics



* 2. Select to Send to Log Analytics and select the Log Analytics workspace. For this sample I will selected only Errors



Reference:
<https://techcommunity.microsoft.com/t5/azure-database-support-blog/azure-sql-db-and-log-analytics-better-together>

NEW QUESTION 228

- (Exam Topic 4)

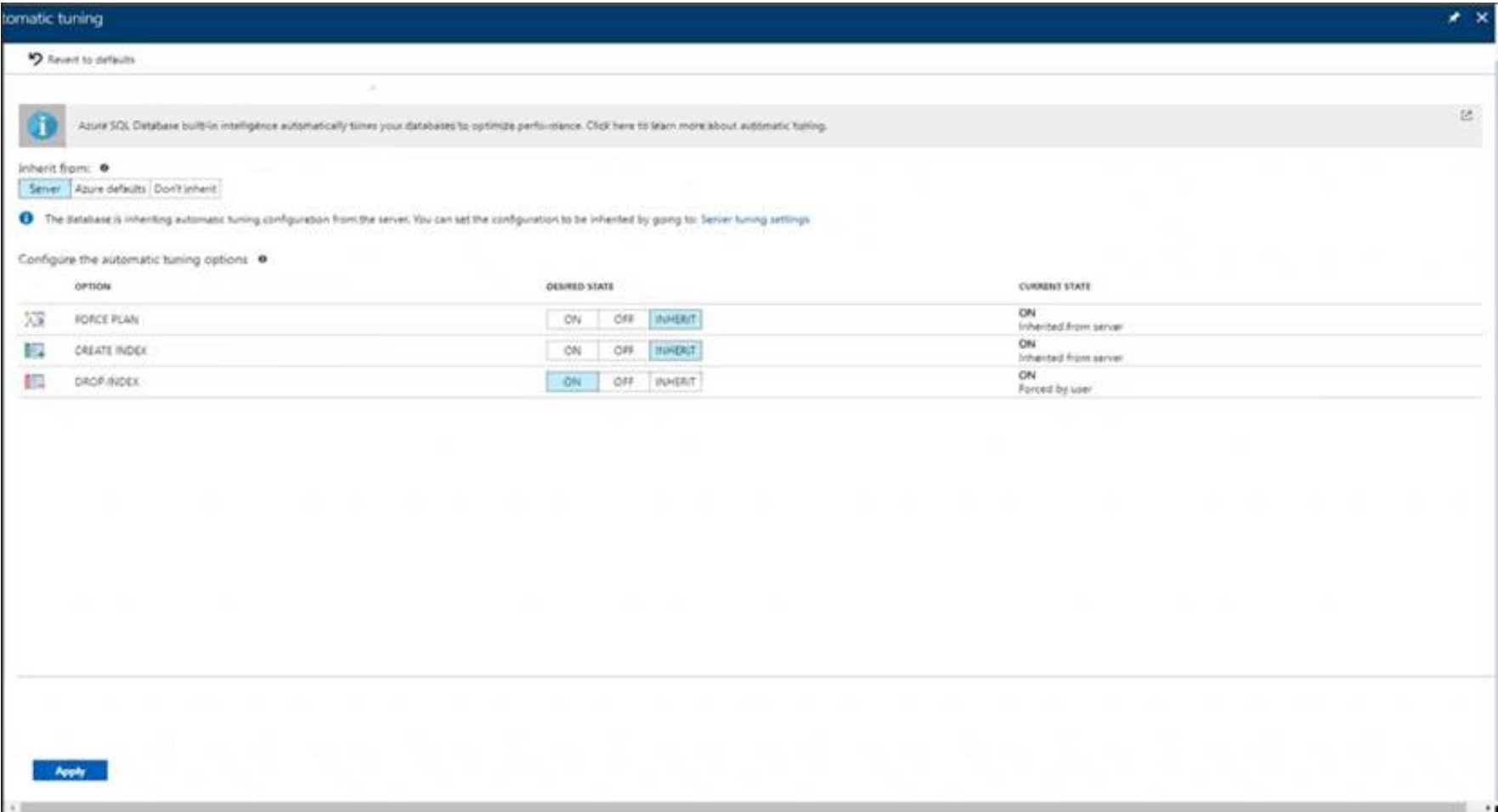
You have several apps that use an Azure SQL Database named db1.
 You need to ensure that queries to db1 are tuned by Azure over time. The solution must only apply to db1. To complete this task, sign in to the Microsoft Azure portal.

- A. Mastered
- B. Not Mastered

Answer: A

Explanation:

* 1. To enable automatic tuning on a single database, navigate to the database in the Azure portal and select Automatic tuning.



* 2. Select the automatic tuning options you want to enable and select Apply.
Note: Individual automatic tuning settings can be separately configured for each database. You can manually configure an individual automatic tuning option, or specify that an option inherits its settings from the server.
Reference:
<https://docs.microsoft.com/en-us/azure/azure-sql/database/automatic-tuning-enable>

NEW QUESTION 232

- (Exam Topic 4)
You are implementing an Azure DevOps strategy for mobile devices using App Center. You plan to use distribution groups to control access to releases. You need to create the distribution groups shown in the following table.

Name	Use
Group1	Application testers who are invited by email
Group2	Early release users who use unauthenticated public links
Group3	Application testers for all the apps of your company

Which type of distribution group should you use for each group? To answer, drag the appropriate group types to the correct locations. Each group type may be used once, more than once, or not at all. You may need to drag the split bar between panes or scroll to view content.
NOTE: Each correct selection is worth one point.

Private

Public

Shared

Group1:

Group2:

Group3:

- A. Mastered
- B. Not Mastered

Answer: A

Explanation:
Box1: Private
In App Center, distribution groups are private by default. Only testers invited via email can access the releases available to this group.
Box 2: Public
Distribution groups must be public to enable unauthenticated installs from public links. Box 3: Shared
Shared distribution groups are private or public distribution groups that are shared across multiple apps in a single organization.
Reference:
<https://docs.microsoft.com/en-us/appcenter/distribution/groups>

NEW QUESTION 235

- (Exam Topic 4)

You plan to provision a self-hosted Linux agent

Which authentication mechanism should you use to register the self-hosted agent?

- A. SSH key
- B. personal access token (PAT)
- C. Alternate credentials
- D. certificate

Answer: B

Explanation:

Note: PAT Supported only on Azure Pipelines and TFS 2017 and newer. After you choose PAT, paste the PAT token you created into the command prompt window. Use a personal access token (PAT) if your Azure DevOps Server or TFS instance and the agent machine are not in a trusted domain. PAT authentication is handled by your Azure DevOps Server or TFS instance instead of the domain controller.

Reference:

<https://docs.microsoft.com/en-us/azure/devops/pipelines/agents/v2-linux> <https://docs.microsoft.com/en-us/azure/devops/pipelines/agents/v2-linux?view=azure-devops>

NEW QUESTION 237

- (Exam Topic 4)

You need to configure an Azure web app named az400-9940427-main to contain an environmental variable named "MAX_ITEMS". The environmental variable must have a value of 50.

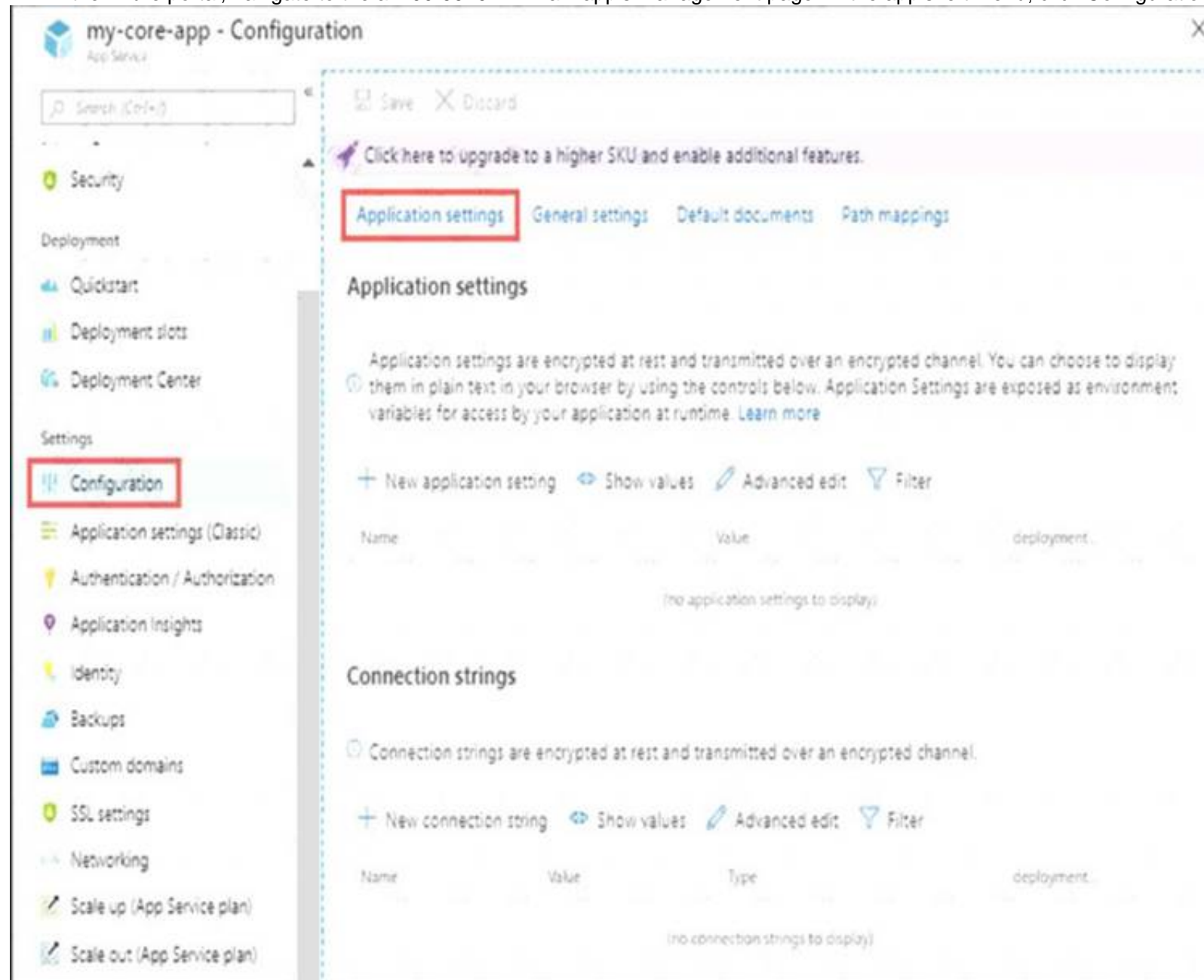
To complete this task, sign in to the Microsoft Azure portal.

- A. Mastered
- B. Not Mastered

Answer: A

Explanation:

* 1. In the Azure portal, navigate to the az400-9940427-main app's management page. In the app's left menu, click Configuration > Application settings.



* 2. Click New Application settings

* 3. Enter the following:

- > Name: MAX_ITEMS
- > Value: 50

References:
<https://docs.microsoft.com/en-us/azure/app-service/configure-common>

NEW QUESTION 238

- (Exam Topic 4)

You need to configure a virtual machine named VM1 to securely access stored secrets in an Azure Key Vault named az400-11566895-kv.

To complete this task, sign in to the Microsoft Azure portal.

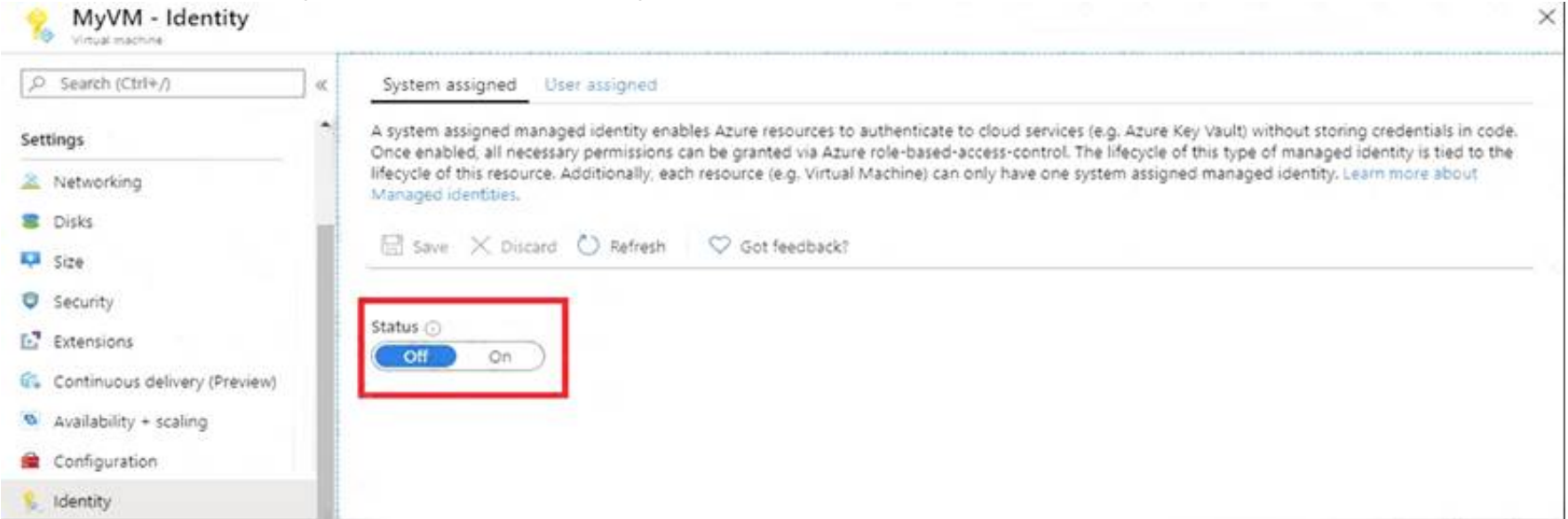
- A. Mastered
- B. Not Mastered

Answer: A

Explanation:

You can use a system-assigned managed identity for a Windows virtual machine (VM) to access Azure Key Vault.

- Sign in to Azure portal
- Locate virtual machine VM1.
- Select Identity
- Enable the system-assigned identity for VM1 by setting the Status to On.



Note: Enabling a system-assigned managed identity is a one-click experience. You can either enable it during the creation of a VM or in the properties of an existing VM.

Reference:

<https://docs.microsoft.com/en-us/azure/active-directory/managed-identities-azure-resources/tutorial-windows-vm>

NEW QUESTION 242

- (Exam Topic 4)

You use Azure DevOps processes to build and deploy code.

You need to compare how much time is spent troubleshooting issues found during development and how much time is spent troubleshooting issues found in released code.

Which KPI should you use?

- A. defect escape rate
- B. unplanned work rate
- C. defect rate
- D. rework rate

Answer: D

Explanation:

The defect escape rate is a metric that assesses the collective quality of software releases by evaluating how often errors are discovered and rectified in the pre-production process versus during production.

The defect escape rate is a KPI (Key Performance Indicator) that measures how many defects are found in released code versus how many are found during development. This KPI can help you to compare how much time is spent troubleshooting issues found during development versus how much time is spent troubleshooting issues found in released code. The higher the defect escape rate, the more defects are found in released code, and thus more time is spent troubleshooting issues in released code.

NEW QUESTION 246

- (Exam Topic 4)

You have a GitHub organization named org1 and an Azure tenant named Tenant1.

You need to enable single sign-on (SSO) in Azure Active Directory (Azure AD) for the users in org1.

Which URIs should you use for the SAML configuration in Azure AD? To answer, drag the appropriate URIs to the correct settings. Each URI may be used once, more than once, or not at all. You may need to drag the split bar between panes or scroll to view content.

NOTE: Each correct selection is worth one point.

URIs	Answer Area
<input type="text" value="https://github.com/orgs/org1"/>	Identifier (Entity ID): <input type="text"/>
<input type="text" value="https://github.com/orgs/org1/sso"/>	Reply URL (Assertion Consumer Service URL): <input type="text"/>
<input type="text" value="https://login.microsoftonline.com/tenant1"/>	Sign on URL: <input type="text"/>
<input type="text" value="https://github.com/orgs/org1/saml/consume"/>	
<input type="text" value="https://login.microsoftonline.com/tenant1.com"/>	

- A. Mastered
B. Not Mastered

Answer: A

Explanation:

Graphical user interface, text, application Description automatically generated

Reference:

<https://docs.microsoft.com/en-us/azure/active-directory/saas-apps/github-tutorial>

NEW QUESTION 248

- (Exam Topic 4)

Your company creates a web application.

You need to recommend a solution that automatically sends to Microsoft Teams a dairy summary of the exceptions that occur m the application.

Which two Azure services should you recommend? Each correct answer presents part of the solution. NOTE: Each correct selection is worth one point.

- A. Microsoft Visual Studio App Center
B. Azure DevOps Project
C. Azure Logic Apps
D. Azure Pipelines
E. Azure Application Insights

Answer: CE

Explanation:

References:

<https://docs.microsoft.com/en-us/azure/azure-monitor/app/asp-net-exceptions> <https://docs.microsoft.com/en-us/azure/azure-monitor/app/automate-custom-reports>

NEW QUESTION 252

- (Exam Topic 4)

You have an Azure subscription that contains a resources group named RG1. RG1 contains the following resources:

- Four Azure virtual machines that run Windows Server and have Internet Information Services (IIS) installed
- SQL Server on an Azure virtual machine
- An Azure Load Balancer

You need to deploy an application to the virtual machines in RG1 by using Azure Pipelines.

Which four actions should you perform in sequence? To answer, move the appropriate actions from the List of actions to the answer area and arrange them in the correct order.



- A. Mastered
B. Not Mastered

Answer: A

Explanation:

Step 1: Create an agent pool

Azure Pipelines provides a pre-defined agent pool named Azure Pipelines with Microsoft-hosted agents. Step 2: Create a deployment group

Deployment groups make it easy to define logical groups of target machines for deployment, and install the required agent on each machine.

Step 3: Execute the Azure Pipelines Agent extension to the virtual machines Install the Azure Pipelines Agent Azure VM extension

Step 4: Add and configure a deployment group job for the pipeline

Tasks that you define in a deployment group job run on some or all of the target servers, depending on the arguments you specify for the tasks and the job itself.

Reference:

<https://docs.microsoft.com/en-us/azure/devops/pipelines/release/deployment-groups/howto-provision-deployme>

NEW QUESTION 255

- (Exam Topic 4)

You have an Azure Kubernetes Service (AKS) cluster.

You need to deploy an application to the cluster by using Azure DevOps.

Which three actions should you perform in sequence? To answer, move the appropriate actions from the list of actions to the answer area and arrange them in the correct order.

Actions	Answer Area
Create a service account in the cluster.	
Create a service principal in Azure Active Directory (Azure AD).	
Add an Azure Function App for Container task to the deployment pipeline.	
Add a Helm package and deploy a task to the deployment pipeline.	
Add a Docker Compose task to the deployment pipeline.	
Configure RBAC roles in the cluster.	

- A. Mastered
 B. Not Mastered

Answer: A

Explanation:

You can set up a CI/CD pipeline to deploy your apps on a Kubernetes cluster with Azure DevOps by leveraging a Linux agent, Docker, and Helm.

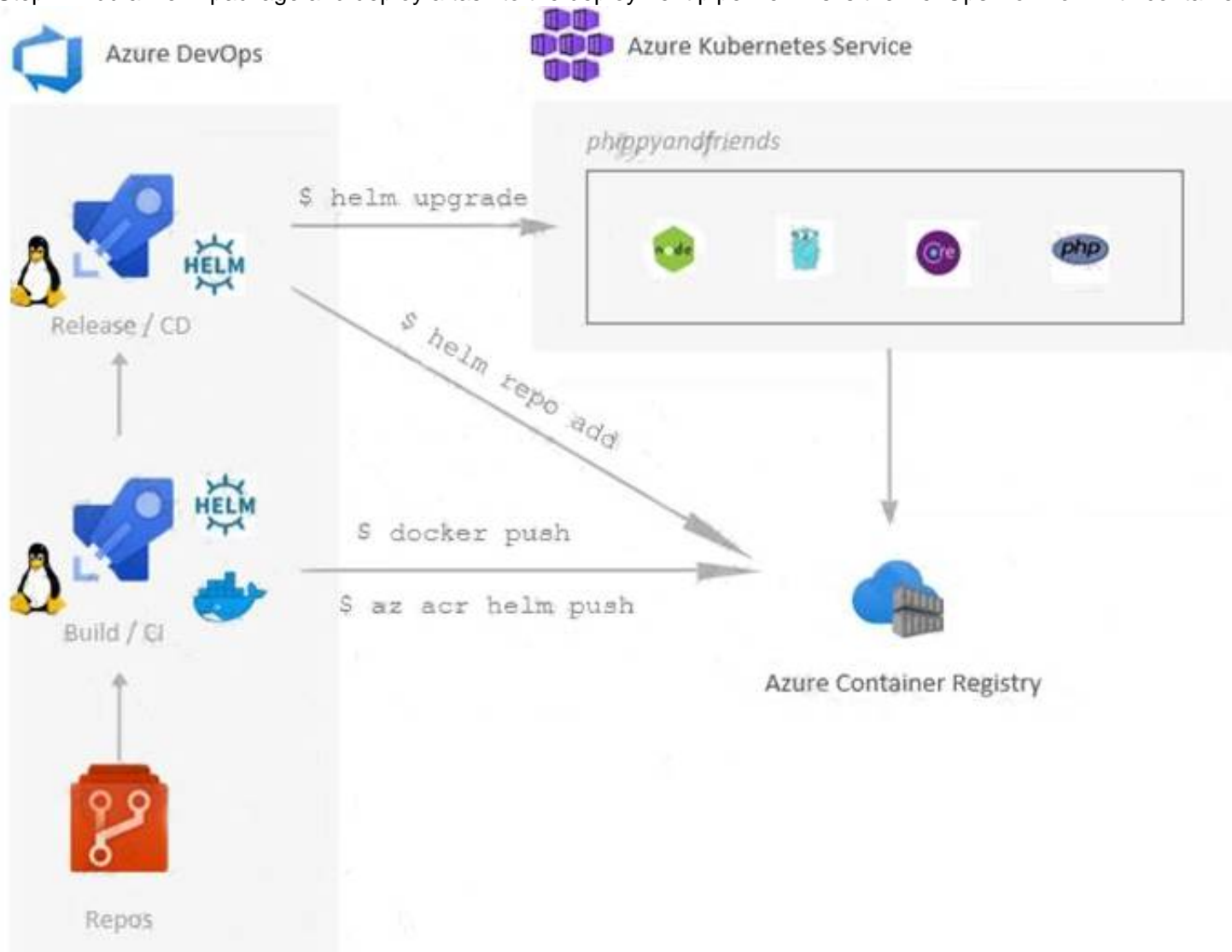
Step 1: Create a service principle in Azure Active Directory (Azure AD)

We need to assign 3 specific service principals with specific Azure Roles that need to interact with our ACR and our AKS.

Create a specific Service Principal for our Azure DevOps pipelines to be able to push and pull images and charts of our ACR.

Create a specific Service Principal for our Azure DevOps pipelines to be able to deploy our application in our AKS.

Step 2: Add a Helm package and deploy a task to the deployment pipeline This is the DevOps workflow with containers:



Step 3: Add a Docker Compose task to the deployment pipeline.

Dockerfile file is a script leveraged by Docker, composed of various commands (instructions) and arguments listed successively to automatically perform actions on a base image in order to create a new Docker image by packaging the app.

Reference:

<https://cloudblogs.microsoft.com/opensource/2018/11/27/tutorial-azure-devops-setup-cicd-pipeline-kubernetes-d>

NEW QUESTION 256

- (Exam Topic 3)

You need to configure Azure Pipelines to control App2 builds. Which authentication method should you use?

- A. Windows NTLM
 B. certificate

- C. SAML
- D. personal access token (PAT)

Answer: D

Explanation:

Scenario: Deploy App2 to an Azure virtual machine named VM1.
A personal access token (PAT) is used as an alternate password to authenticate into Azure DevOps. Reference:
<https://docs.microsoft.com/en-us/azure/devops/organizations/accounts/use-personal-access-tokens-to-authenticat>

NEW QUESTION 258

- (Exam Topic 2)

You need to configure Azure Automation for the computers in Pool7.
Which three actions should you perform in sequence? To answer, move the appropriate actions from the list of actions to the answer area and arrange them in the correct order.

Actions

Run the New-AzureRmResourceGroupDeployment Azure PowerShell cmdlet.

Create an Azure Resource Manager template file that has an extension of .json.

Run the Import-AzureRmAutomationDscConfiguration Azure PowerShell cmdlet.

Run the start-AzureRmAutomationDscCompilationJob Azure PowerShell cmdlet.

Create a Desired State Configuration (DSC) configuration file that has an extension of .ps1.

Answer Area

1

2

3

- A. Mastered
- B. Not Mastered

Answer: A

Explanation:

Actions

Run the New-AzureRmResourceGroupDeployment Azure PowerShell cmdlet.

Create an Azure Resource Manager template file that has an extension of .json.

Run the Import-AzureRmAutomationDscConfiguration Azure PowerShell cmdlet.

Run the start-AzureRmAutomationDscCompilationJob Azure PowerShell cmdlet.

Create a Desired State Configuration (DSC) configuration file that has an extension of .ps1.

Answer Area

1

Create a Desired State Configuration (DSC) configuration file that has an extension of .ps1.

2

Run the Import-AzureRmAutomationDscConfiguration Azure PowerShell cmdlet.

3

Run the start-AzureRmAutomationDscCompilationJob Azure PowerShell cmdlet.

NEW QUESTION 261

- (Exam Topic 2)

You need to implement the code flow strategy for Project2 in Azure DevOps.
Which three actions should you perform in sequence? To answer, move the appropriate actions from the list of actions to the answer area and arrange in the correct order.

Actions

Answer Area

Create a fork

Create a branch

Add a build validation policy.

Add a build policy

Create a repository

Add an application access policy.



- A. Mastered
- B. Not Mastered

Answer: A

Explanation:

Step 1: Create a repository

A Git repository, or repo, is a folder that you've told Git to help you track file changes in. You can have any number of repos on your computer, each stored in their own folder.

Step 2: Create a branch

Branch policies help teams protect their important branches of development. Policies enforce your team's code quality and change management standards.

Step 3: Add a build validation policy

When a build validation policy is enabled, a new build is queued when a new pull request is created or when changes are pushed to an existing pull request targeting this branch. The build policy then evaluates the results of the build to determine whether the pull request can be completed.

Scenario:

Implement a code flow strategy for Project2 that will: Enable Team2 to submit pull requests for Project2.

Enable Team2 to work independently on changes to a copy of Project2.

Ensure that any intermediary changes performed by Team2 on a copy of Project2 will be subject to the same restrictions as the ones defined in the build policy of Project2.

Project2 will use an automatic build policy. A small team of developers named Team2 will work independently on changes to the project. The Team2 members will not have permissions to Project2.

References: <https://docs.microsoft.com/en-us/azure/devops/repos/git/manage-your-branches>

NEW QUESTION 263

- (Exam Topic 1)

To resolve the current technical issue, what should you do to the Register-AzureRmAutomationDscNode command?

- A. Change the value of the ConfigurationMode parameter.
- B. Replace the Register-AzureRmAutomationDscNode cmdlet with Register-AzureRmAutomationScheduledRunbook
- C. Add the AllowModuleOverwrite parameter.
- D. Add the DefaultProfile parameter.

Answer: A

Explanation:

Change the ConfigurationMode parameter from ApplyOnly to ApplyAndAutocorrect.

The Register-AzureRmAutomationDscNode cmdlet registers an Azure virtual machine as an APS Desired State Configuration (DSC) node in an Azure Automation account.

Scenario: Current Technical Issue

The test servers are configured correctly when first deployed, but they experience configuration drift over time. Azure Automation State Configuration fails to correct the configurations.

Azure Automation State Configuration nodes are registered by using the following command.

```
Register-AzureRmAutomationDscNode
  -ResourceGroupName 'TestResourceGroup'
  -AutomationAccountName 'LitwareAutomationAccount'
  -AzureVMName $vmanme
  -ConfigurationMode 'ApplyOnly'
```

References:

<https://docs.microsoft.com/en-us/powershell/module/azurerm.automation/register-azurermautomationdscnode?v>

NEW QUESTION 265

- (Exam Topic 1)

What should you use to implement the code quality restriction on the release pipeline for the investment planning applications suite?

- A. a trigger
- B. a pre deployment approval
- C. a post-deployment approval
- D. a deployment gate

Answer: D

NEW QUESTION 267

- (Exam Topic 1)

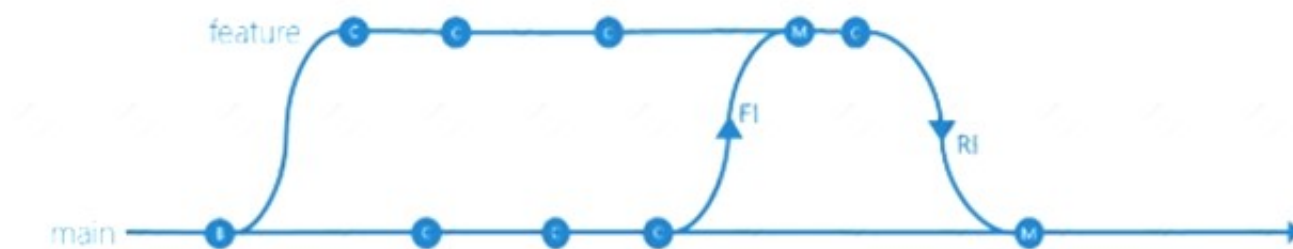
Which branching strategy should you recommend for the investment planning applications suite?

- A. release isolation
- B. main only
- C. development isolation
- D. feature isolation

Answer: C

Explanation:

Scenario: A branching strategy that supports developing new functionality in isolation must be used. Feature isolation is a special derivation of the development isolation, allowing you to branch one or more feature branches from main, as shown, or from your dev branches.



When you need to work on a particular feature, it might be a good idea to create a feature branch.

NEW QUESTION 268

- (Exam Topic 1)

How should you configure the release retention policy for the investment planning applications suite? To answer, select the appropriate options in the answer area.

NOTE: Each correct selection is worth one point.

Global release:

Set the default retention policy to 30 days.
Set the maximum retention policy to 30 days.
Set the stage retention policy to 30 days.
Set the stage retention policy to 60 days.

Production stage:

Set the default retention policy to 30 days.
Set the maximum retention policy to 60 days.
Set the stage retention policy to 30 days.
Set the stage retention policy to 60 days.

- A. Mastered
- B. Not Mastered

Answer: A

Explanation:

Scenario: By default, all releases must remain available for 30 days, except for production releases, which must be kept for 60 days.

Box 1: Set the default retention policy to 30 days

The Global default retention policy sets the default retention values for all the build pipelines. Authors of build pipelines can override these values.

Box 2: Set the stage retention policy to 60 days

You may want to retain more releases that have been deployed to specific stages. References: <https://docs.microsoft.com/en-us/azure/devops/pipelines/policies/retention>

NEW QUESTION 272

- (Exam Topic 4)

You are finalizing a release in GitHub.

You need to apply the following labels to the release:

- > Name
- > Email
- > Release v3.0
- > Release date

How should you complete the git command? To answer, select the appropriate options in the answer area.

NOTE: Each correct selection is worth one point.

git

add

commit

push

tag

-a

-b

-c

-m

v3.0

-a

-b

-c

-m

"Release v3.0"

- A. Mastered
- B. Not Mastered

Answer: A

Explanation:

Box 1; tag
Tagging. Like most VCSs, Git has the ability to tag specific points in a repository's history as being important. Typically, people use this functionality to mark release points (v1.0, v2.0 and so on).
Box 2: -a
Creating an annotated tag in Git is simple. The easiest way is to specify -a when you run the tag command: Example:
\$ git tag -a v1.4 -m "my version 1.4" Box 3: -m
Reference:
https://git-scm.com/book/en/v2/Git-Basics-Tagging

NEW QUESTION 277

- (Exam Topic 4)
You have a GitHub repository that contains the source code for an app.
You need to identify all the changes made between versions 1.4.16 and 1.6.12 of the source code.
How should you complete the Git command? To answer, select the appropriate options in the answer area. NOTE: Each correct selection is worth one point.
Git | helper-script > changes.txt
Answer Area

git

| helper-script > changes.txt

- A. Mastered
- B. Not Mastered

Answer: A

Explanation:

This command will compare the changes made between versions 1.4.16 and 1.6.12 of the source code in your GitHub repository, pipe the output through the helper-script and save the result to a file called "changes.txt" Please note that, this command assumes that you have a helper-script that can handle git diff output as an input and processes it further. It is not a default git command.

NEW QUESTION 280

- (Exam Topic 4)
Your company uses Git as a source code control system for a complex app named App1.
You plan to add a new functionality to App1.
You need to design a branching model for the new functionality.
Which branch lifetime and branch time should you use in the branching model? To answer, select the appropriate options in the answer area.
NOTE: Each correct selection is worth one point.

Branch lifetime:

Long-lived

Short-lived

Branch type:

Master

Feature

Integration

- A. Mastered
- B. Not Mastered

Answer: A

Explanation:

Branch lifetime: Short-lived Branch type: Feature

Feature branches are used when developing a new feature or enhancement which has the potential of a development lifespan longer than a single deployment. When starting development, the deployment in which this feature will be released may not be known. No matter when the feature branch will be finished, it will always be merged back into the master branch.

References: <https://gist.github.com/digitaljhelms/4287848>

NEW QUESTION 282

- (Exam Topic 4)

You have an Azure Kubernetes Service (AKS) pod.

You need to configure a probe to perform the following actions:

- > Confirm that the pod is responding to service requests.
- > Check the status of the pod four times a minute.
- > Initiate a shutdown if the pod is unresponsive.

How should you complete the YAML configuration file? To answer, select the appropriate options in the answer area.

NOTE: Each correct selection is worth one point.

Answer Area

```
apiVersion: v1
kind: Pod
metadata:
  labels:
    test: readiness-and-liveness
  name: readiness-http
spec:
  containers:
  - name: container1
    image: k8s.gcr.io/readiness-and-liveness
    args:
    - /server
```

livenessProbe:
 readinessProbe:
 ShutdownProbe:
 startupProbe:

```
    httpGet:
      path: /checknow
      port: 8123
      httpHeaders:
      - name: Custom-Header
        value: CheckNow
```

initialDelaySeconds: 15
 periodSeconds: 15
 timeoutSeconds: 15

- A. Mastered
- B. Not Mastered

Answer: A

Explanation:

Box 1: readinessProbe:

For containerized applications that serve traffic, you might want to verify that your container is ready to handle incoming requests. Azure Container Instances supports readiness probes to include configurations so that your container can't be accessed under certain conditions.

Reference:

<https://docs.microsoft.com/en-us/azure/container-instances/container-instances-readiness-probe>

NEW QUESTION 287

- (Exam Topic 4)

You are developing an application. The application source has multiple branches. You make several changes to a branch used for experimentation.

You need to update the main branch to capture the changes made to the experimentation branch and override the history of the Git repository.

Which Git option should you use?

- A. Rebase
- B. Fetch
- C. MergeE1457D5D1DDCBD40AB3BF70D5D
- D. Push

Answer: C

Explanation:

<https://docs.microsoft.com/en-us/azure/devops/repos/git/pull-requests>

NEW QUESTION 292

- (Exam Topic 4)

You need to ensure that Microsoft Visual Studio 2017 can remotely attach to an Azure Function named fa-11566895. To complete this task, sign in to the Microsoft Azure portal.

- A. Mastered
- B. Not Mastered

Answer: A

Explanation:

Enable Remote Debugging

Before we start a debugging session to our Azure Function app we need to enable the functionality.

- Navigate in the Azure portal to your function app fa-11566895
- Go to the “Application settings”
- Under “Debugging” set Remote Debugging to On and set Remote Visual Studio version to 2017. Reference: <https://www.locktar.nl/uncategorized/azure-remote-debugging-manually-in-visual-studio-2017/>

NEW QUESTION 294

- (Exam Topic 4)

Your development team is building a new web solution by using the Microsoft Visual Studio integrated development environment (IDE).

You need to make a custom package available to all the developers. The package must be managed centrally, and the latest version must be available for consumption in Visual Studio automatically.

Which three actions should you perform? Each correct answer presents part of the solution. NOTE: Each correct selection is worth one point.

- A. Publish the package to a feed.
- B. Create a new feed in Azure Artifacts.
- C. Upload a package to a Git repository.
- D. Add the package URL to the Environment settings in Visual Studio.
- E. Add the package URL to the NuGet Package Manager settings in Visual Studio.
- F. Create a Git repository in Azure Repos.

Answer: ABE

Explanation:

B: By using your custom NuGet package feed within your Azure DevOps (previously VSTS) instance, you'll be able to distribute your packages within your organization with ease. Start by creating a new feed.

A: We can publish, pack and push the built project to our NuGet feed. E: Consume your private NuGet Feed

Go back to the Packages area in Azure DevOps, select your feed and hit “Connect to feed”. You'll see some instructions for your feed, but it's fairly simple to set up.

Just copy your package source URL, go to Visual Studio, open the NuGet Package Manager, go to its settings and add a new source. Choose a fancy name, insert the source URL. Done.

Search for your package in the NuGet Package Manager and it should appear there, ready for installation. Make sure to select the appropriate feed (or just all feeds) from the top right select box.

References:

<https://medium.com/medialesson/get-started-with-private-nuget-feeds-in-azure-devops-8c7b5f022a68>

NEW QUESTION 299

.....

Thank You for Trying Our Product

We offer two products:

1st - We have Practice Tests Software with Actual Exam Questions

2nd - Questions and Answers in PDF Format

AZ-400 Practice Exam Features:

- * AZ-400 Questions and Answers Updated Frequently
- * AZ-400 Practice Questions Verified by Expert Senior Certified Staff
- * AZ-400 Most Realistic Questions that Guarantee you a Pass on Your FirstTry
- * AZ-400 Practice Test Questions in Multiple Choice Formats and Updatesfor 1 Year

100% Actual & Verified — Instant Download, Please Click
[Order The AZ-400 Practice Test Here](#)