



Cisco

Exam Questions 300-410

Implementing Cisco Enterprise Advanced Routing and Services (ENARSI)

NEW QUESTION 1

Refer to the exhibit.

```
R1(config)#route-map ADD permit 20
R1(config-route-map)#set tag 1

R1(config)#router ospf1
R1(config-router)#redistribute rip subnets route-map ADD
```

Which statement about R1 is true?

- A. OSPF redistributes RIP routes only if they have a tag of one.
- B. RIP learned routes are distributed to OSPF with a tag value of one.
- C. R1 adds one to the metric for RIP learned routes before redistributing to OSPF.
- D. RIP routes are redistributed to OSPF without any changes.

Answer: B**NEW QUESTION 2**

Refer to the exhibit.

```
R1#show running-config | section dhcp
ip dhcp excluded-address 192.168.1.1 192.168.1.49
ip dhcp pool DHCP
  network 192.168.1.0 255.255.255.0
  default-router 192.168.1.1
  dns-server 8.8.8.8
  lease 0 12
```

Users report that IP addresses cannot be acquired from the DHCP server. The DHCP server is configured as shown. About 300 total nonconcurrent users are using this DHCP server, but none of them are active for more than two hours per day. Which action fixes the issue within the current resources?

- A. Modify the subnet mask to the network 192.168.1.0 255.255.254.0 command in the DHCP pool
- B. Configure the DHCP lease time to a smaller value
- C. Configure the DHCP lease time to a bigger value
- D. Add the network 192.168.2.0 255.255.255.0 command to the DHCP pool

Answer: B**NEW QUESTION 3**

Refer to the exhibit.

```
service timestamps debug datetime msec
service timestamps log datetime
clock timezone MST -7 0
clock summer-time MST recurring
ntp authentication-key 1 md5 00101A0B0152181206224747071E 7
ntp server 10.10.10.10

R1#show clock
*06:13:44.045 MST Sun Dec 30 2018

R1#conf t
Enter configuration commands, one per line. End with CNTL/Z.
R1(config) #logging host 10.10.10.20
R1(config) #end
R1#
*Dec 30 13:15:28: %SYS-5-CONFIG_I: Configured from console by console
R1#
*Dec 30 13:15:28: %SYS-6-LOGGINGHOST_STARTSTOP: Logging to host 10.10.10.20 port 514
started – CLI initiated
```

An administrator noticed that after a change was made on R1, the timestamps on the system logs did not match the clock. What is the reason for this error?

- A. An authentication error with the NTP server results in an incorrect timestamp.
- B. The keyword localtime is not defined on the timestamp service command.
- C. The NTP server is in a different time zone.
- D. The system clock is set incorrectly to summer-time hours.

Answer: D

NEW QUESTION 4

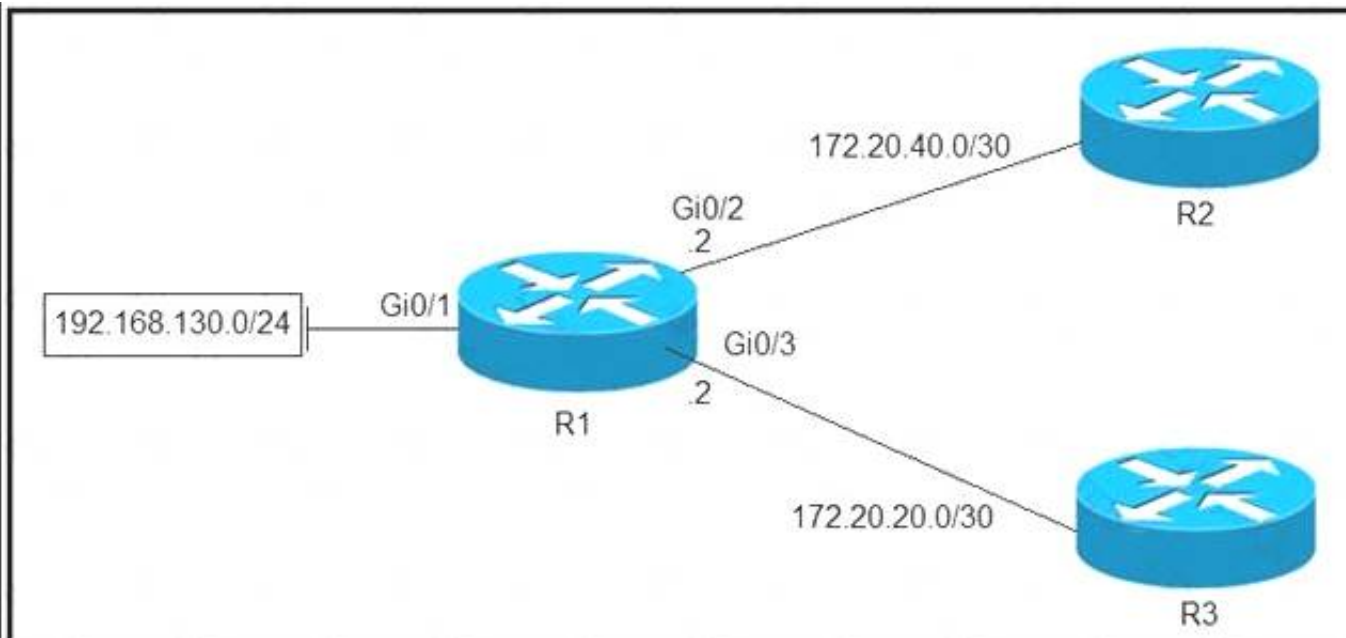
Which configuration adds an IPv4 interface to an OSPFv3 process in OSPFv3 address family configuration?

- A. router ospfv3 1 address-family ipv4
- B. Router(config-router)#ospfv3 1 ipv4 area 0
- C. Router(config-if)#ospfv3 1 ipv4 area 0
- D. router ospfv3 1 address-family ipv4 unicast

Answer: B

NEW QUESTION 5

Refer to the exhibit.



Which configuration configures a policy on R1 to forward any traffic that is sourced from the 192.168.130.0/24 network to R2?

- A.

```
access-list 1 permit 192.168.130.0 0.0.0.255
!
interface Gi0/2
ip policy route-map test
!
route-map test permit 10
match ip address 1
set ip next-hop 172.20.20.2
```
- B.

```
access-list 1 permit 192.168.130.0 0.0.0.255
!
interface Gi0/1
ip policy route-map test
!
route-map test permit 10
match ip address 1
set ip next-hop 172.20.40.2
```

- C. `access-list 1 permit 192.168.130.0 0.0.0.255`
!
`interface Gi0/2`
`ip policy route-map test`
!
`route-map test permit 10`
`match ip address 1`
`set ip next-hop 172.20.20.1`
- D. `access-list 1 permit 192.168.130.0 0.0.0.255`
!
`interface Gi0/1`
`ip policy route-map test`
!
`route-map test permit 10`
`match ip address 1`
`set ip next-hop 172.20.40.1`

- A. Option A
B. Option B
C. Option C
D. Option D

Answer: D

NEW QUESTION 6

Refer to the exhibit.

```
access-list 100 deny tcp any any eq 465
access-list 100 deny tcp any eq 465 any
access-list 100 permit tcp any any eq 80
access-list 100 permit tcp any eq 80 any
access-list 100 permit udp any any eq 443
access-list 100 permit udp any eq 443 any
```

During troubleshooting it was discovered that the device is not reachable using a secure web browser. What is needed to fix the problem?

- A. permit tcp port 443
B. permit udp port 465
C. permit tcp port 465
D. permit tcp port 22

Answer: A

NEW QUESTION 7

What is a prerequisite for configuring BFD?

- A. Jumbo frame support must be configured on the router that is using BFD.
B. All routers in the path between two BFD endpoints must have BFD enabled.
C. Cisco Express Forwarding must be enabled on all participating BFD endpoints.
D. To use BFD with BGP, the timers 3 9 command must first be configured in the BGP routing process.

Answer: C

NEW QUESTION 8

Refer to the exhibit.

```
R1#show ip ssh
SSH Disabled – version 1.99
%Please create RSA keys to enable SSH (and of atleast 768 bits for SSH v2).
Authentication timeout: 120 secs; Authentication retries: 3
Minimum expected Diffie Hellman key size: 1024 bits
IOS Keys in SECSH format (ssh-rsa, base64 encoded) : NONE
R1#
```


An engineer is trying to connect to a device with SSH but cannot connect. The engineer connects by using the console and finds the displayed output when troubleshooting. Which command must be used in configuration mode to enable SSH on the device?

- A. no ip ssh disable
- B. ip ssh enable
- C. ip ssh version 2
- D. crypto key generate rsa

Answer: D

NEW QUESTION 9

Drag and drop the MPLS VPN concepts from the left onto the correct descriptions on the right.

route distinguisher	propagates VPN reachability information
route target	distributes labels for traffic engineering
Resource Reservation Protocol	uniquely identifies a customer prefix
multiprotocol BGP	controls the import/export of customer prefixes

- A. Mastered
- B. Not Mastered

Answer: A

Explanation:

route distinguisher	multiprotocol BGP
route target	Resource Reservation Protocol
Resource Reservation Protocol	route distinguisher
multiprotocol BGP	route target

NEW QUESTION 10

Which method changes the forwarding decision that a router makes without first changing the routing table or influencing the IP data plane?

- A. nonbroadcast multiaccess
- B. packet switching
- C. policy-based routing
- D. forwarding information base

Answer: C

NEW QUESTION 10

Refer to the exhibit.

```
Router#show ip route
<output omitted>
Gateway of last resort is not set

    192.168.1.0/32 is subnetted, 1 subnets
O       192.168.1.1 [110/11] via 192.168.12.1, 16:56:40, Ethernet0/0
    192.168.2.0/24 is variably subnetted, 2 subnets, 2 masks
C       192.168.2.0/24 is directly connected, Loopback0
L       192.168.2.2/32 is directly connected, Loopback0
    192.168.3.0/24 is variably subnetted, 2 subnets, 2 masks
C       192.168.3.0/24 is directly connected, Ethernet0/1
L       192.168.3.1/32 is directly connected, Ethernet0/1
    192.168.12.0/24 is variably subnetted, 2 subnets, 2 masks
C       192.168.12.0/24 is directly connected, Ethernet0/0
L       192.168.12.2/32 is directly connected, Ethernet0/0
Router#show running-config | section ospf
router ospf 1
  summary-address 10.0.0.0 255.0.0.0
  redistribute static subnets
  network 192.168.3.0 0.0.0.255 area 0
  network 192.168.12.0 0.0.0.255 area 0
Router#
```

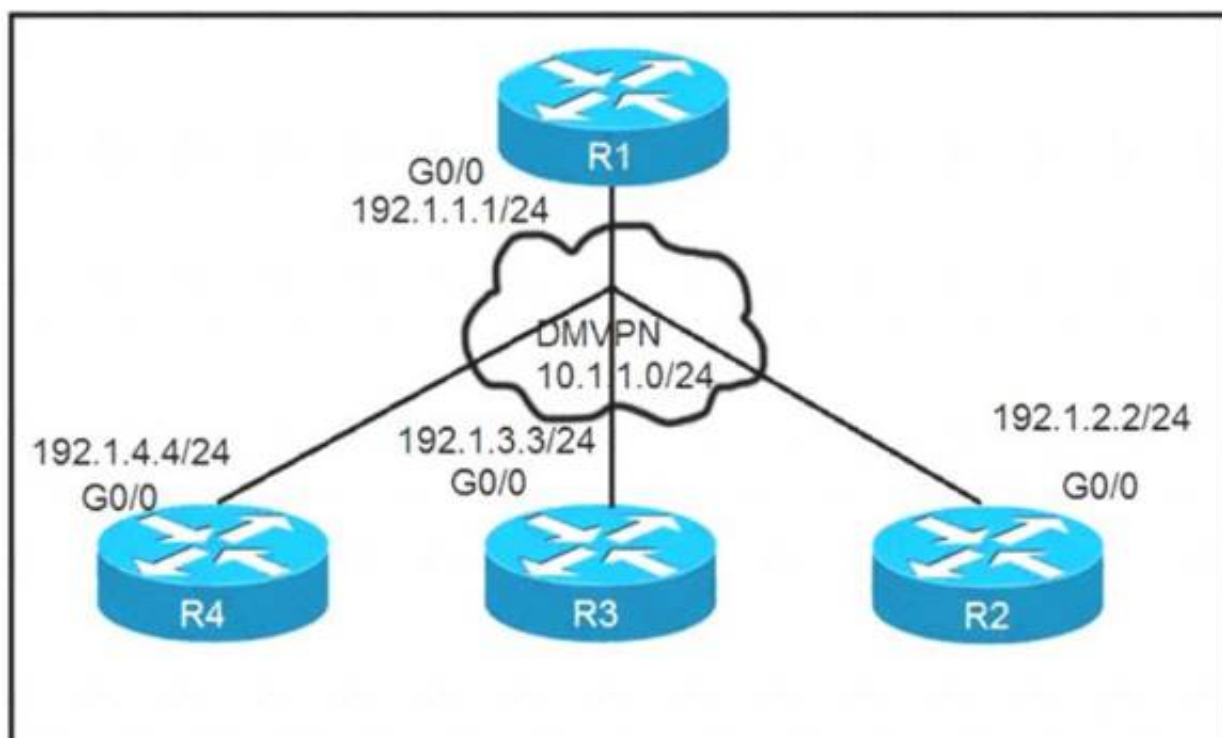
An engineer is trying to generate a summary route in OSPF for network 10.0.0.0/8, but the summary route does not show up in the routing table. Why is the summary route missing?

- A. The summary-address command is used only for summarizing prefixes between areas.
- B. The summary route is visible only in the OSPF database, not in the routing table.
- C. There is no route for a subnet inside 10.0.0.0/8, so the summary route is not generated.
- D. The summary route is not visible on this router, but it is visible on other OSPF routers in the same area.

Answer: A

NEW QUESTION 11

Refer to the exhibits.



```

On R1:
R1(config)# interface tunnel 1
R1(config-if)# ip address 10.1.1.1 255.255.255.0
R1(config-if)# tunnel source 192.1.1.1
R1(config-if)# tunnel mode gre multipoint
R1(config-if)# ip nhrp network-id 111

On R2:
R2(config)# interface tunnel 1
R2(config-if)# ip address 10.1.1.2 255.255.255.0
R2(config-if)# tunnel source FastEthernet0/0
R2(config-if)# tunnel mode gre multipoint
R2(config-if)# ip nhrp network-id 222
R2(config-if)# ip nhrp nhs 10.1.1.1
R2(config-if)# ip nhrp map 10.1.1.1 192.1.1.1

On R3:
R3(config)# interface tunnel 1
R3(config-if)# ip address 10.1.1.3 255.255.255.0
R3(config-if)# tunnel source FastEthernet0/0
R3(config-if)# tunnel mode gre multipoint
R3(config-if)# ip nhrp network-id 333 R3(config-if)# ip nhrp nhs 10.1.1.1
R3(config-if)# ip nhrp map 10.1.1.1 192.1.1.1

On R4: R4(config)# interface tunnel 1
R4(config-if)# ip address 10.1.1.4 255.255.255.0
R4(config-if)# tunnel source FastEthernet0/0
R4(config-if)# tunnel mode gre multipoint
R4(config-if)# ip nhrp network-id 444
R4(config-if)# ip nhrp nhs 10.1.1.1
R4(config-if)# ip nhrp map 10.1.1.1 192.1.1.1
    
```

Phase-3 tunnels cannot be established between spoke-to-spoke in DMVPN. Which two commands are missing? (Choose two.)

- A. The ip nhrp redirect command is missing on the spoke routers.
- B. The ip nhrp shortcut command is missing on the spoke routers.
- C. The ip nhrp redirect command is missing on the hub router.
- D. The ip nhrp shortcut command is missing on the hub router.
- E. The ip nhrp map command is missing on the hub router.

Answer: BC

NEW QUESTION 15

Which statement about IPv6 RA Guard is true?

- A. It does not offer protection in environments where IPv6 traffic is tunneled.
- B. It cannot be configured on a switch port interface in the ingress direction.
- C. Packets that are dropped by IPv6 RA Guard cannot be spanned.
- D. It is not supported in hardware when TCAM is programmed.

Answer: A

NEW QUESTION 19

.....

Thank You for Trying Our Product

We offer two products:

1st - We have Practice Tests Software with Actual Exam Questions

2nd - Questons and Answers in PDF Format

300-410 Practice Exam Features:

- * 300-410 Questions and Answers Updated Frequently
- * 300-410 Practice Questions Verified by Expert Senior Certified Staff
- * 300-410 Most Realistic Questions that Guarantee you a Pass on Your FirstTry
- * 300-410 Practice Test Questions in Multiple Choice Formats and Updatesfor 1 Year

100% Actual & Verified — Instant Download, Please Click
[Order The 300-410 Practice Test Here](#)