



Microsoft

Exam Questions mb-300

Microsoft Dynamics 365 Unified Operations Core

About ExamBible

[Your Partner of IT Exam](#)

Found in 1998

ExamBible is a company specialized on providing high quality IT exam practice study materials, especially Cisco CCNA, CCDA, CCNP, CCIE, Checkpoint CCSE, CompTIA A+, Network+ certification practice exams and so on. We guarantee that the candidates will not only pass any IT exam at the first attempt but also get profound understanding about the certificates they have got. There are so many alike companies in this industry, however, ExamBible has its unique advantages that other companies could not achieve.

Our Advances

* 99.9% Uptime

All examinations will be up to date.

* 24/7 Quality Support

We will provide service round the clock.

* 100% Pass Rate

Our guarantee that you will pass the exam.

* Unique Gurantee

If you do not pass the exam at the first time, we will not only arrange FULL REFUND for you, but also provide you another exam of your claim, ABSOLUTELY FREE!

NEW QUESTION 1

- (Exam Topic 1)

You need to configure check printing for Munson's.

Which four actions should you perform in sequence? To answer, move the appropriate actions from the list of actions to the answer area and arrange them in the correct order.

Actions	Answer Area
Install the Document Routing Agent on the client machines where users will be printing the checks.	
Navigate to the legal entity and enable the printer.	
Select the legal entities for the printer to be available.	
Discover and add the check printer from the Document Routing Agent.	
Enter the Dynamics 365 Finance and Operations configurations in the Document Routing Agent.	
Discover and add the check printer to the system from Dynamics 365 Finance and Operations.	
Install the Document Routing Agent on the corporate print server.	
Register the Document Routing Agent with Dynamics 365 Finance and Operations.	

- A. Mastered
- B. Not Mastered

Answer: A

Explanation:

Reference:

<https://docs.microsoft.com/en-us/dynamics365/unified-operations/dev-itpro/analytics/install-document-routing-a>

NEW QUESTION 2

- (Exam Topic 1)

You need to determine why the sales associate is not able to see Munson's in the search results. What is the cause of the issue?

- A. The search criteria is searching for only names that are exactly 'pickles'.
- B. The search criteria is only able to search by the shortened search name of the customer.
- C. The search criteria is searching for all customer names that start with 'pickles'.
- D. The search criteria is case sensitive.

Answer: C

Explanation:

Reference:

<https://docs.microsoft.com/en-us/dynamics365/customer-engagement/basics/search-records>

NEW QUESTION 3

- (Exam Topic 2)

Note: This question is part of a series of questions that present the same scenario. Each question in the series contains a unique solution that might meet the stated goals. Some question sets might have more than one correct solution, while others might not have a correct solution.

After you answer a question in this section, you will NOT be able to return to it. As a result, these questions will not appear in the review screen.

You are a Dynamics 365 for Finance and Operations system administrator. You have a test environment that is used by several people at any given time.

You create a new data entity in your development and migrate the code to the test environment. In the test environment, you are unable to find the data entity in the list.

You need to locate the data entity.

Solution: Restart the Application Object Server (AOS) of the test environment. Does the solution meet the goal?

- A. Yes
- B. No

Answer: B

NEW QUESTION 4

- (Exam Topic 2)

A company implements Dynamics 365 for Finance and Operations.

You have a requirement that the component data for address structure in the system be available in Portuguese (Brazil).

You need to provide address and contact information purpose with translation. What should you do?

- A. Under Organization administration, on the Global addresses tab, enter the appropriate translation value in the translations form
- B. In User options, set the language preference to Portuguese pt-BR and enter addresses for customers and vendors
- C. Upload files to Dynamics 365 Translation Services (DTS) for conversion
- D. Apply return from Dynamics 365 Translation Services (DTS) to the system by submitting a support ticket

Answer: A

NEW QUESTION 5

- (Exam Topic 2)

A company plans to use Dynamics 365 for Finance and Operations. You need to implement the security architecture.

Which component should you use for each requirement? To answer, select the appropriate security component in the answer area.

NOTE: Each correct selection is worth one point.

Answer Area

Requirement	Security component
Group the security configuration for employees with the same job function.	<div>Security roles</div> <div>Duties</div> <div>Privileges</div> <div>Permissions</div>
Assign check-depositing tasks to a group of people as part of the accounts receivable process.	<div>Security roles</div> <div>Duties</div> <div>Privileges</div> <div>Permissions</div>
Restrict access to a specific table or chart.	<div>Security roles</div> <div>Duties</div> <div>Privileges</div> <div>Permissions</div>

- A. Mastered
- B. Not Mastered

Answer: A

Explanation:

Answer Area

Requirement	Security component
Group the security configuration for employees with the same job function.	<div>Security roles</div> <div>Duties</div> <div>Privileges</div> <div>Permissions</div>
Assign check-depositing tasks to a group of people as part of the accounts receivable process.	<div>Security roles</div> <div>Duties</div> <div>Privileges</div> <div>Permissions</div>
Restrict access to a specific table or chart.	<div>Security roles</div> <div>Duties</div> <div>Privileges</div> <div>Permissions</div>

NEW QUESTION 6

- (Exam Topic 2)

Note: This question is part of a series of questions that present the same scenario. Each question in the series contains a unique solution that might meet the stated goals. Some question sets might have more than one correct solution, while others might not have a correct solution.

After you answer a question in this section, you will NOT be able to return to it. As a result, these questions will not appear in the review screen.

You are a functional consultant who is deploying Dynamics 365 for Finance and Operations. The implementation must:

- ☒ Use an iterative approach
- ☒ Integrate with real-world data
- ☒ Enforce standards and governance
- ☒ Implement multiple rounds of feedback

You need to deploy and validate the implementation.

Solution: Deploy the out-of-the-box solution. Enable users to customize the solution based on individual user scenarios.

Does the solution meet the goal?

- A. Yes
- B. No

Answer: B

NEW QUESTION 7

- (Exam Topic 2)

A company implements Dynamics 365 for Finance and Operations. It sets up and configures the system to support reporting requirements using Microsoft Power BI.

The customer service manager wants to create reports in Power BI for analyzing customer order patterns, order fulfillment metrics, customer satisfaction KPIs, and

customer service representative goal metrics. These reports compare aggregated information across multiple demographic regions and business lines for current trends against historic information.

The manager would like to use the reports to make individual team performance more visible to the managerial and executive teams. Since reports will be used by those teams as well as mobile users, the manager would like the report response to reflect the latest data without requiring the user to wait.

You need to determine which tool or functionality best fits the scenario.

Which feature or functionality should you use? To answer, select the appropriate feature or functionality in the dialog box in the answer area.

NOTE: Each correct selection is worth one point

Answer Area

Scenario	Feature or functionality
Stage the aggregate data for use by the reports.	<div>Dynamics 365 system administration settings</div> <div>Power BI desktop client</div> <div>Lifecycle Services</div>
Set the data source to use DirectQuery.	<div>Dynamics 365 system administration settings</div> <div>Power BI desktop client</div> <div>Lifecycle Services</div>
Publish the new reports to the production environment.	<div>Dynamics 365 system administration settings</div> <div>Power BI desktop client</div> <div>Lifecycle Services</div>
Configure the data refresh rate for periodic updating.	<div>Dynamics 365 system administration settings</div> <div>Power BI desktop client</div> <div>Lifecycle Services</div>

- A. Mastered
- B. Not Mastered

Answer: A

Explanation:

Answer Area

Scenario	Feature or functionality
Stage the aggregate data for use by the reports.	<div>Dynamics 365 system administration settings</div> <div>Power BI desktop client</div> <div>Lifecycle Services</div>
Set the data source to use DirectQuery.	<div>Dynamics 365 system administration settings</div> <div>Power BI desktop client</div> <div>Lifecycle Services</div>
Publish the new reports to the production environment.	<div>Dynamics 365 system administration settings</div> <div>Power BI desktop client</div> <div>Lifecycle Services</div>
Configure the data refresh rate for periodic updating.	<div>Dynamics 365 system administration settings</div> <div>Power BI desktop client</div> <div>Lifecycle Services</div>

NEW QUESTION 8

- (Exam Topic 2)

You are a Dynamics 365 for Finance and Operations system administrator for a new implementation. You have a solution that needs to be tested using User Acceptance Testing (UAT). You have created a Business process modeler (BPM) library.

You need to validate and support the solution.

Which three actions should you perform? Each answer presents part of the solution.

- A. Upload the saved recording to BPM.
- B. Create a new Business process library
- C. Export the task recording to Microsoft Word and upload it to BPM.
- D. Record test cases and save them to BPM.
- E. Create and save a new task recording.

Answer: ABD

NEW QUESTION 9

- (Exam Topic 2)

You set up security roles for the users in a company. You must use standard security roles when possible. You need to identify the standard security roles. Which of the following can you assign to a user as a standard security role?

- A. Leasing manager
- B. System engineer
- C. Business development manager
- D. Waterspider

Answer: D

NEW QUESTION 10

- (Exam Topic 2)

A company implements Dynamics 365 for Finance and Operations.

You are responsible for creating a custom feature within a solution by using Microsoft Azure DevOps. Testers have found a bug while running one of the User Acceptance Testing (UAT) scripts. However, it is not a high-severity bug and has been found to not have interconnected dependencies to other branches within the process flow.

You need to deploy the passed functionality features. What should you do?

- A. Exclude the specific package from the Business process modeler (BPM).
- B. Exclude the specific package from the data package in the Data management tool.
- C. Exclude the specific package from the deployable package in Microsoft Azure DevOps.
- D. Exclude the specific package from the deployable package in Configuration data manager.

Answer: C

NEW QUESTION 10

- (Exam Topic 2)

You manage a Dynamics 365 for Finance and Operations environment. Users report slow queries, deadlocks, and crashes. You need identify which tool to use to troubleshoot. What should you use?

- A. System diagnostics
- B. Environment monitoring
- C. DirectQuery
- D. Microsoft Azure Active Directory Connect Health Agent

Answer: B

Explanation:

Reference:








<https://blogs.msdn.microsoft.com/axsa/2018/06/05/how-to-use-environment-monitoring-view-raw-logs/>

NEW QUESTION 14

- (Exam Topic 2)

You are working as a functional consultant in a new Dynamics 365 for Finance and Operations environment. Your organization conducts business within the United States, with offices in several states. The organization has legal entities defined for each state and must share common tables between entities.

Each legal entity has the following setup:

-  Users
-  Products
-  Customers
-  Tax authorities
-  Payment terms
-  Human Resources data
-  Site-specific stock ordering

You need to consolidate reports used for financial-consolidation reporting in a new legal entity. What should you do?

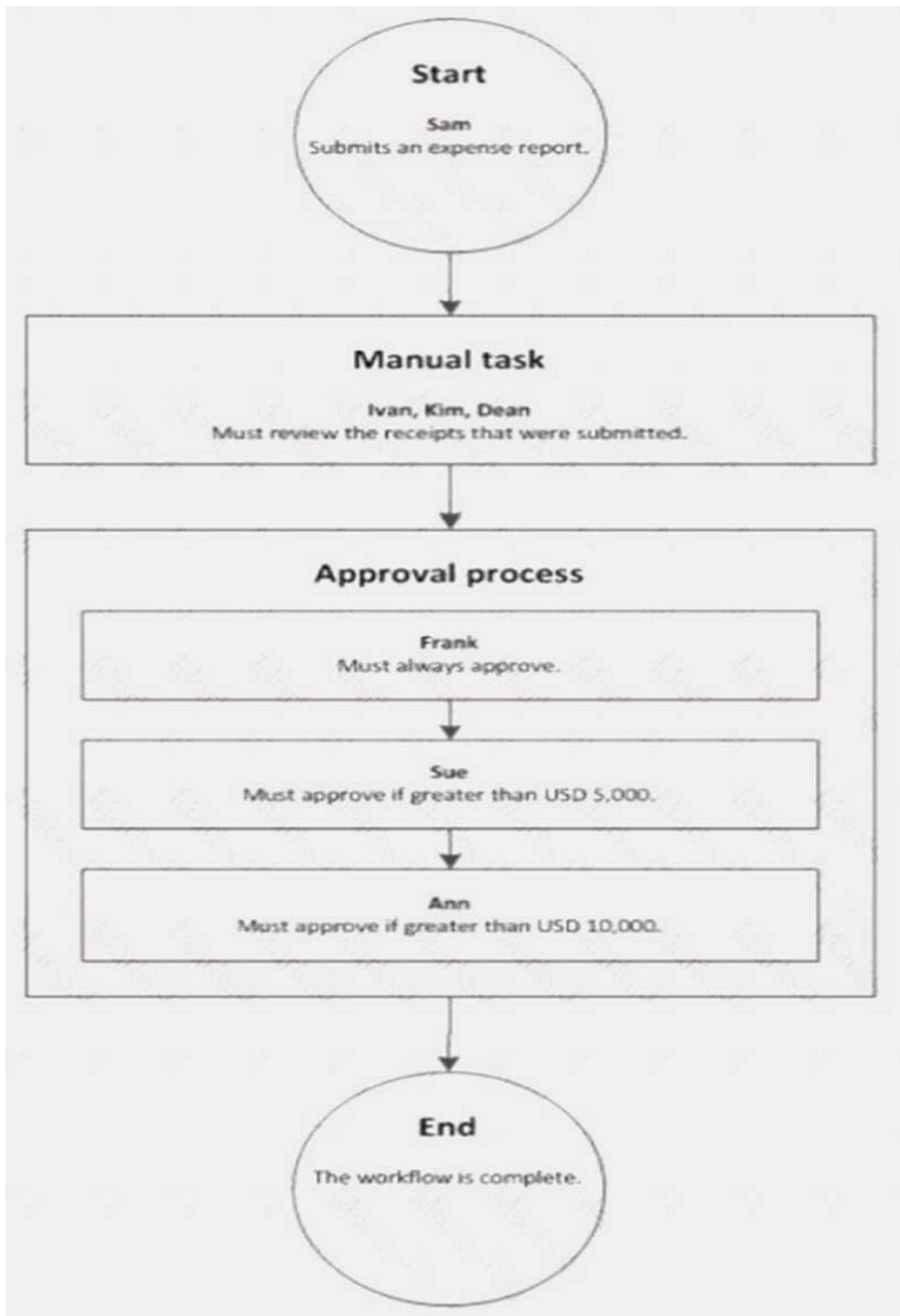
- A. Define the consolidation period
- B. Specify the range of product for consolidation
- C. Define Human Resources data
- D. Create users

Answer: A

NEW QUESTION 18

- (Exam Topic 2)

A company sets up a workflow for expense reports. An employee named Sam submits an expense report totaling USD 7,000 to go through the workflow.



Use the drop-down menus to select the answer choice that answers each question based on the information presented in the graphic.

NOTE: Each correct selection is worth one point.

Answer Area	
Questions	Answer choice
What statement about the workflow is correct?	<div>Ann can reject the expense report.</div> <div>Ivan, Kim, and Dean must all complete the manual task.</div> <div>The workflow ends after Sue approves the expense report.</div> <div>The expense report will go through Frank, Sue, and Ann for approval.</div>
What type of workflow is this?	<div>Workflow with roles</div> <div>Workflow with a manual decision</div> <div>Workflow with multiple users in a task</div> <div>Workflow with a line-item workflow element</div>

- A. Mastered
- B. Not Mastered

Answer: A

Explanation:

Reference:
<https://docs.microsoft.com/en-us/dynamicsax-2012/appuser-itpro/workflow-with-multiple-users-in-a-task>

NEW QUESTION 23

- (Exam Topic 2)

You are a system administrator using Dynamics 365 for Finance and Operations. You work in a project-based organization. Each project has an approval process that will be assigned to different users of the system. Approvals are processed based on documents. Within those documents are different line items. Each line item may have a different approver. You need to validate if the proposed action will satisfy the requirements. For each of the following solutions, select Yes if the action meets the requirements. Otherwise, select No. NOTE: Each correct selection is worth one point.

Answer Area			
Action		Yes	No
Configure document types. Configure document management parameters.		<input type="radio"/>	<input type="radio"/>
Create a document workflow. Configure line-item workflow elements for the document workflow.		<input type="radio"/>	<input type="radio"/>
Create workflow actions for when the document is assigned to the approver.		<input type="radio"/>	<input type="radio"/>
Set up reason codes for electronic signatures.		<input type="radio"/>	<input type="radio"/>

- A. Mastered
- B. Not Mastered

Answer: A

Explanation:

Answer Area			
Action		Yes	No
Configure document types. Configure document management parameters.		<input checked="" type="radio"/>	<input type="radio"/>
Create a document workflow. Configure line-item workflow elements for the document workflow.		<input type="radio"/>	<input checked="" type="radio"/>
Create workflow actions for when the document is assigned to the approver.		<input checked="" type="radio"/>	<input type="radio"/>
Set up reason codes for electronic signatures.		<input checked="" type="radio"/>	<input type="radio"/>

NEW QUESTION 27

- (Exam Topic 2)

Your company acquires hundreds of partnerships after it purchases a separate company. The separate company stores the partnership records in a legacy system. You export Partnership and PartnershipGroup files from the legacy system into Microsoft Word format. You create Partnership and PartnershipGroup entities. You need to import the partnerships into Dynamics 365 for Finance and Operations. Which four actions should you perform in order? To answer, move four actions from the list of actions to the answer area and arrange them in the correct order.

Actions

Perform the data import.

Convert the Word files to OData format. In the Dynamics 365 client Data management workspace, create a new data project.

In SQL Server Management Studio, use the SQL Server Integration Services import wizard.

In the Visual Studio Finance and Operations project, use the Data entity wizard.

Convert the Word files to CSV format. In the Dynamics 365 client Data management workspace, create a new data project.

For each file, select the entities and upload the files.

Validate all entity data mapping.



Answer Area



- A. Mastered
- B. Not Mastered

Answer: A

Explanation:

Actions

Perform the data import.

Convert the Word files to OData format. In the Dynamics 365 client Data management workspace, create a new data project.

In SQL Server Management Studio, use the SQL Server Integration Services import wizard.

In the Visual Studio Finance and Operations project, use the Data entity wizard.

Convert the Word files to CSV format. In the Dynamics 365 client Data management workspace, create a new data project.

For each file, select the entities and upload the files.

Validate all entity data mapping.



Answer Area

Convert the Word files to CSV format. In the Dynamics 365 client Data management workspace, create a new data project.

Perform the data import.

In SQL Server Management Studio, use the SQL Server Integration Services import wizard.

Validate all entity data mapping.



NEW QUESTION 31

- (Exam Topic 2)

Note: This question is part of a series of questions that present the same scenario. Each question in the series contains a unique solution that might meet the stated goals. Some question sets might have more than one correct solution, while others might not have a correct solution.

After you answer a question in this section, you will NOT be able to return to it. As a result, these questions will not appear in the review screen.

You are configuring a Dynamics 365 for Finance and Operations environment. You must set up Microsoft Excel data exports.

You need to verify that the solution will result in a successful export of data to Excel.

Solution: Use Open in Excel to open an entity form that does not share the same root data source by implementing the ExportToExcelGeneratedCustomExport interface.

Does the solution meet the goal?

- A. Yes
- B. No

Answer: B

NEW QUESTION 33

- (Exam Topic 2)

You plan a data migration from Dynamics AX 2009 to a Dynamics 365 for Finance and Operations environment.

You need to ensure that you can perform the data migration. What should you do first?

- A. Upgrade the existing on-premises environment to Dynamics 365 for Finance and Operations online
- B. Migrate content to Dynamics POS (Point-of-Sale) 2009
- C. Upgrade the existing on-premises environment to Dynamics AX 2012 R2
- D. Migrate content to Dynamics 365 Business Central

Answer: C

NEW QUESTION 38

- (Exam Topic 2)

A company plans to create a global address book and additional address books for each line of business. You need to help add parties to the address books.

What party types can you use for both the global address book and the additional address books? NOTE: Each correct selection is worth one point.

- A. Customer
- B. Vendor
- C. Person
- D. Competitor
- E. Organization

Answer: ABD

Explanation:

<https://docs.microsoft.com/en-sg/dynamics365/unified-operations/fin-and-ops/organization-administration/overv>

NEW QUESTION 39

- (Exam Topic 2)

You assign security roles to users in your company. The security roles contain one or more duty assignments. The purchasing manager role must be able to view payment journals. You need to edit the security configuration to meet the requirement. What should you do?

- A. Create a new security rol
- B. Create a purchasing manager duty and assign it to that rol
- C. Then assign the duty to the user.
- D. Create a new privileg
- E. Assign the View only permission to the privileg
- F. Then assign the privilege to the user.
- G. Edit the existing role and assign the View payment journal transactions permission level.
- H. Edit the duty to view only on the payment journa
- I. The duty is assigned to the purchasing manager role.

Answer: C

NEW QUESTION 41

- (Exam Topic 2)

You set up Dynamics 365 for Finance and Operations. Your organization will use email with the application.

You need to ensure that email will be sent using typical secure settings. What setting must be set as specified?

- A. In-place hold and Litigation hold are enabled.
- B. In-place eDiscovery is enabled,
- C. The SMTP port field is set to 587.
- D. Retention policies are enabled.

Answer: C

NEW QUESTION 46

- (Exam Topic 2)

Note: This question is part of a series of questions that present the same scenario. Each question in the series contains a unique solution that might meet the stated goals. Some question sets might have more than one correct solution, while others might not have a correct solution.

After you answer a question in this section, you will NOT be able to return to it. As a result, these questions will not appear in the review screen.

You are a Dynamics 365 for Finance and Operations system administrator. You have a test environment that is used by several people at any given time.

You create a new data entity in your development and migrate the code to the test environment. In the test environment, you are unable to find the data entity in the list.

You need to locate the data entity.

Solution: In the Data management framework parameter screen, refresh the Entity list. Does the solution meet the goal?

- A. Yes

B. No

Answer: A

NEW QUESTION 51

- (Exam Topic 2)

A company needs to set up its printers to work with Dynamics 365 for Finance and Operations. You need to set up the printers for network printing from the Dynamics 365 client browser.

Which three actions should be performed in order? To answer, move all actions from the list of actions to the answer area and arrange them in the correct order.

Actions

Activate the network printers

Install and configure a document routing agent

Set up the network printer and assign a static IP

Register network printers in Finance and Operations

Answer Area

- A. Mastered
- B. Not Mastered

Answer: A

Explanation:

References:

<https://docs.microsoft.com/en-us/dynamics365/unified-operations/dev-itpro/analytics/install-document-routing-a>

NEW QUESTION 55

- (Exam Topic 2)

Note: This question is part of a series of questions that present the same scenario. Each question in the series contains a unique solution that might meet the stated goals. Some question sets might have more than one correct solution, while others might not have a correct solution.

After you answer a question in this section, you will NOT be able to return to it. As a result, these questions will not appear in the review screen.

You are a Dynamics 365 for Finance and Operations system administrator. You have a test environment that is used by several people at any given time.

You create a new data entity in your development and migrate the code to the test environment. In the test environment, you are unable to find the data entity in the list.

You need to locate the data entity. Solution: Reopen the client browser. Does the solution meet the goal?

- A. Yes
- B. No

Answer: B

NEW QUESTION 60

- (Exam Topic 2)

You are a Dynamics 365 for Finance and Operations system administrator. A user reports that the system is getting gradually slower.

You need to identify the user's processes and slow-running queries and rebuild any fragmented indexes. Which features should you use? To answer, select the appropriate configuration in the answer area. NOTE: Each correct selection is worth one point.

Answer Area

Activity

Environment monitoring tool

Instruct the user to validate the processes using a given session ID.

- User interaction
- User load
- Activity load
- User activity

View the call stack for any slow-running queries.

- User interaction
- Raw logs
- Activity load
- User load

Rebuild a fragmented index.

- SQL Insights
- Environment activity
- Environment health
- User load

- A. Mastered
- B. Not Mastered

Answer: A

Explanation:

Answer Area

Activity

Environment monitoring tool

Instruct the user to validate the processes using a given session ID.

- User interaction
- User load
- Activity load
- User activity

View the call stack for any slow-running queries.

- User interaction
- Raw logs
- Activity load
- User load

Rebuild a fragmented index.

- SQL Insights
- Environment activity
- Environment health
- User load

NEW QUESTION 65

- (Exam Topic 2)

You manage a Dynamics 365 for Finance and Operations environment.

In preparation for being migrated into a new environment, data packages are being numbered in alignment with the default numbering formats in Lifecycle Services. A package is named 03.01.002.

You need to identify what this package contains. To answer, select the appropriate option in the answer area. NOTE: Each correct selection is worth one point.

Segment	Component
03	<div>The environment</div> <div>The module</div> <div>The data type</div> <div>The month</div>
01	<div>The module</div> <div>The month</div> <div>The sequence number</div> <div>The data type</div>
002	<div>The sequence number</div> <div>The data package version</div> <div>The data entity</div> <div>The data type reference</div>

- A. Mastered
- B. Not Mastered

Answer: A

Explanation:

Segment	Component
03	<div>The environment The module The data type The month</div>
01	<div>The module The month The sequence number The data type</div>
002	<div>The sequence number The data package version The data entity The data type reference</div>

NEW QUESTION 68

- (Exam Topic 2)

You set up a new installation of Dynamics 365 for Finance and Operations for a Fortune 500 company. The company is organized into divisions.

You need to design the structure in the application.

What application features should you use? To answer, drag the appropriate setting to the correct drop targets. Each source may be used once, more than once, or not at all. You may need to drag the split bar between panes or scroll to view content.

NOTE: Each correct selection is worth one point.

Application features

Legal entity

Business unit

Department

Value stream

Answer Area

Organizational structure

The fortune 500 company

A semi-autonomous operating entity

Human resources

Production flow activity control

Application feature

Application feature

Application feature

Application feature

Application feature

- A. Mastered
- B. Not Mastered

Answer: A

Explanation:

References:

<https://docs.microsoft.com/en-us/dynamics365/unified-operations/fin-and-ops/organization-administration/organ>

NEW QUESTION 73

- (Exam Topic 2)

A company implements Dynamics 365 for Finance and Operations.

The company wants to utilize Case management to track project issues and risks and associate them to the projects. Project managers will be responsible for managing the new cases.

You need to configure the system. What should you do?

- A. Create case subcategories named Issue and Risk._
- B. Create parent case categories named Issue and Risk.
- C. Create case activities for Issue and Risk-
- D. Create case category security roles named Issue and Risk and assign them to the Project managers duty.

Answer: A

NEW QUESTION 78

.....

Relate Links

100% Pass Your mb-300 Exam with ExamBible Prep Materials

<https://www.exambible.com/mb-300-exam/>

Contact us

We are proud of our high-quality customer service, which serves you around the clock 24/7.

Viste - <https://www.exambible.com/>