

Microsoft

Exam Questions AZ-801

Configuring Windows Server Hybrid Advanced Services



NEW QUESTION 1

DRAG DROP

You are planning the implementation of Cluster2 to support the on-premises migration plan.

You need to ensure that the disks on Cluster2 meet the security requirements.

In which order should you perform the actions? To answer, move all actions from the list of actions to the answer area and arrange them in the correct order.

Select and Place:

| Actions | Answer Area |
|-----------------------------------------------------------|-------------|
| Add a disk resource to the cluster. | |
| Enable BitLocker on the volume. | |
| Update the BitLockerProtectorInfo property of the volume. | |
| Create a Cluster Shared Volume (CSV). | |
| Put the disk in maintenance mode. | |

- A. Mastered
- B. Not Mastered

Answer: A

Explanation:

Reference: <https://docs.microsoft.com/en-us/windows-server/failover-clustering/bitlocker-on-csv-in-ws-2022>

NEW QUESTION 2

HOTSPOT

What is the effective minimum password length for User1 and Admin1? To answer, select the appropriate options in the answer area.

NOTE: Each correct selection is worth one point.

Hot Area:

Answer Area

| | |
|---------|---------------------------------------------------------------------------------------|
| User1: | <div><div></div><div>8</div><div>9</div><div>10</div><div>11</div><div>12</div></div> |
| Admin1: | <div><div></div><div>8</div><div>9</div><div>10</div><div>11</div><div>12</div></div> |

- A. Mastered
- B. Not Mastered

Answer: A

Explanation:

Box 1: 9

When multiple PSOs apply to a user, the PSO with the highest precedence (lowest precedence number) applies which in this case is PSO1.

Box 2: 8

There are no PSOs applied to Admin1 so the password policy from the Default Domain GPO applies.

The Minimum password length setting in GPO1 would only apply to local user accounts on computers in OU1. It does not apply to domain user accounts.

NEW QUESTION 3

You need to meet the technical requirements for Cluster3.

What should you include in the solution?

- A. Enable integration services on all the virtual machines.
- B. Add a Windows Server server role.
- C. Configure a fault domain doe the cluster.
- D. Add a failover cluster role.

Answer: D

Explanation:

The Hyper-V replica broker role is required on the cluster.

Reference: <https://docs.microsoft.com/en-us/virtualization/community/team-blog/2012/20120327-why-is-the-hyper-v-replicabroker-required>

NEW QUESTION 4

DRAG DROP

You need to meet the technical requirements for Cluster2.

Which four actions should you perform in sequence before you can enable replication? To answer, move the appropriate actions from the list of actions to the answer area and arrange them in the correct order.

Select and Place:

| Actions | Answer Area |
|-----------------------------------------------------|-------------|
| Create an Azure Recovery Services vault. | |
| Install Azure Connected Machine agents. | |
| Install and register Azure Site Recovery Providers. | |
| Create and associate replication policies. | |
| Create a Hyper-V site. | |

A. Mastered

B. Not Mastered

Answer: A

Explanation:

Reference:

<https://docs.microsoft.com/en-us/azure/site-recovery/hyper-v-azure-tutorial>

NEW QUESTION 5

HOTSPOT

You are planning the DHCP1 migration to support the DHCP migration plan.

Which two PowerShell cmdlets should you run on DHCP1, and which two PowerShell cmdlets should you run on DHCP2?

To answer, drag the appropriate cmdlets to the correct servers. Each cmdlet may be used once, more than once, or not at all. You may need to drag the split bar between panes or scroll to view content.

NOTE: Each correct selection is worth one point.

Select and Place:

| Cmdlets | Answer Area |
|--------------------------|--------------------------------------------|
| Add-DhcpServerInDC | DHCP1: <input type="text" value="Cmdlet"/> |
| Add-DhcpServerv4Scope | <input type="text" value="Cmdlet"/> |
| Export-DhcpServer | |
| Import-DhcpServer | DHCP2: <input type="text" value="Cmdlet"/> |
| Remove-DhcpServerInDC | <input type="text" value="Cmdlet"/> |
| Remove-DhcpServerv4Scope | |

A. Mastered

B. Not Mastered

Answer: A

Explanation:

Reference: <https://theitbros.com/how-to-migrate-dhcp-to-windows-server-2016/>

NEW QUESTION 6

You are planning the data share migration to support the on-premises migration plan.

What should you use to perform the migration?

- A. Storage Migration Service
- B. Microsoft File Server Migration Toolkit
- C. File Server Resource Manager (FSRM)
- D. Windows Server Migration Tools

Answer: A

Explanation:

Reference: <https://docs.microsoft.com/en-us/windows-server/storage/storage-migration-service/migrate-data>

NEW QUESTION 7

HOTSPOT

You are planning the migration of APP3 and APP4 to support the Azure migration plan.

What should you do on Cluster1 and in Azure before you perform the migration? To answer, select the appropriate options in the answer area.

NOTE: Each correct selection is worth one point.

Hot Area:

Answer Area

On Cluster1:

- Configure Azure Network Adapter.
- Create a Point-to-Site (P2S) VPN connection to Vnet1.
- Import the Azure Migrate appliance.
- Install the Azure File Sync agent.
- Install the Windows Server Migration Tools.

In Azure:

- Create a premium block blobs Azure Storage account.
- Create a private endpoint.
- Create a VPN gateway.
- Create an Azure Migrate project.

- A. Mastered
- B. Not Mastered

Answer: A

Explanation:

Reference:

<https://docs.microsoft.com/en-us/azure/migrate/tutorial-discover-hyper-v>

NEW QUESTION 8

HOTSPOT

You need to implement alerts for the domain controllers. The solution must meet the technical requirements.

What should you do on the domain controllers, and what should you create on Azure? To answer, select the appropriate options in the answer area.

NOTE: Each correct selection is worth one point.

Hot Area:

Answer Area

On the domain controllers:

- Create a Data Collector Set in Performance Monitor.
- Modify the Performance Monitor Users group.
- Install the Azure Monitor agent.

In Azure:

- Create an Azure SQL database.
- Create a Storage Sync Service.
- Create an Azure Log Analytics workspace.
- Create an Azure Storage account.

- A. Mastered
- B. Not Mastered

Answer: A

Explanation:

Reference: <https://docs.microsoft.com/en-us/azure/azure-monitor/agents/azure-monitor-agentoverview?tabs=PowerShellWindows>

NEW QUESTION 9

Note: This question is part of a series of questions that present the same scenario. Each question in the series contains a unique solution that might meet the stated goals. Some question sets might have more than one correct solution, while others might not have a correct solution. After you answer a question in this section, you will NOT be able to return to it. As a result, these questions will not appear in the review screen.

You have a server named Server1 that runs Windows Server.

You need to ensure that only specific applications can modify the data in protected folders on Server1.

Solution: From Virus & threat protection, you configure Controlled folder access.

Does this meet the goal?

- A. Yes
- B. No

Answer: A

Explanation:

Reference: <https://docs.microsoft.com/en-us/microsoft-365/security/defender-endpoint/customize-controlledfolders?view=o365-worldwide>

NEW QUESTION 10

Note: This question is part of a series of questions that present the same scenario. Each question in the series contains a unique solution that might meet the stated goals. Some question sets might have more than one correct solution, while others might not have a correct solution.

After you answer a question in this section, you will NOT be able to return to it. As a result, these questions will not appear in the review screen.

You have a server named Server1 that runs Windows Server.

You need to ensure that only specific applications can modify the data in protected folders on Server1. Solution: From Virus & threat protection, you configure Tamper Protection Does this meet the goal?

A. Yes

B. No

Answer: B

Explanation:

Reference: <https://docs.microsoft.com/en-us/microsoft-365/security/defender-endpoint/customize-controlledfolders?view=o365-worldwide>

NEW QUESTION 10

Note: This question is part of a series of questions that present the same scenario. Each question in the series contains a unique solution that might meet the stated goals. Some question sets might have more than one correct solution, while others might not have a correct solution.

After you answer a question in this section, you will NOT be able to return to it. As a result, these questions will not appear in the review screen.

You have a server named Server1 that runs Windows Server.

You need to ensure that only specific applications can modify the data in protected folders on Server1.

Solution: From App & browser control, you configure the Exploit protection settings.

Does this meet the goal?

A. Yes

B. No

Answer: B

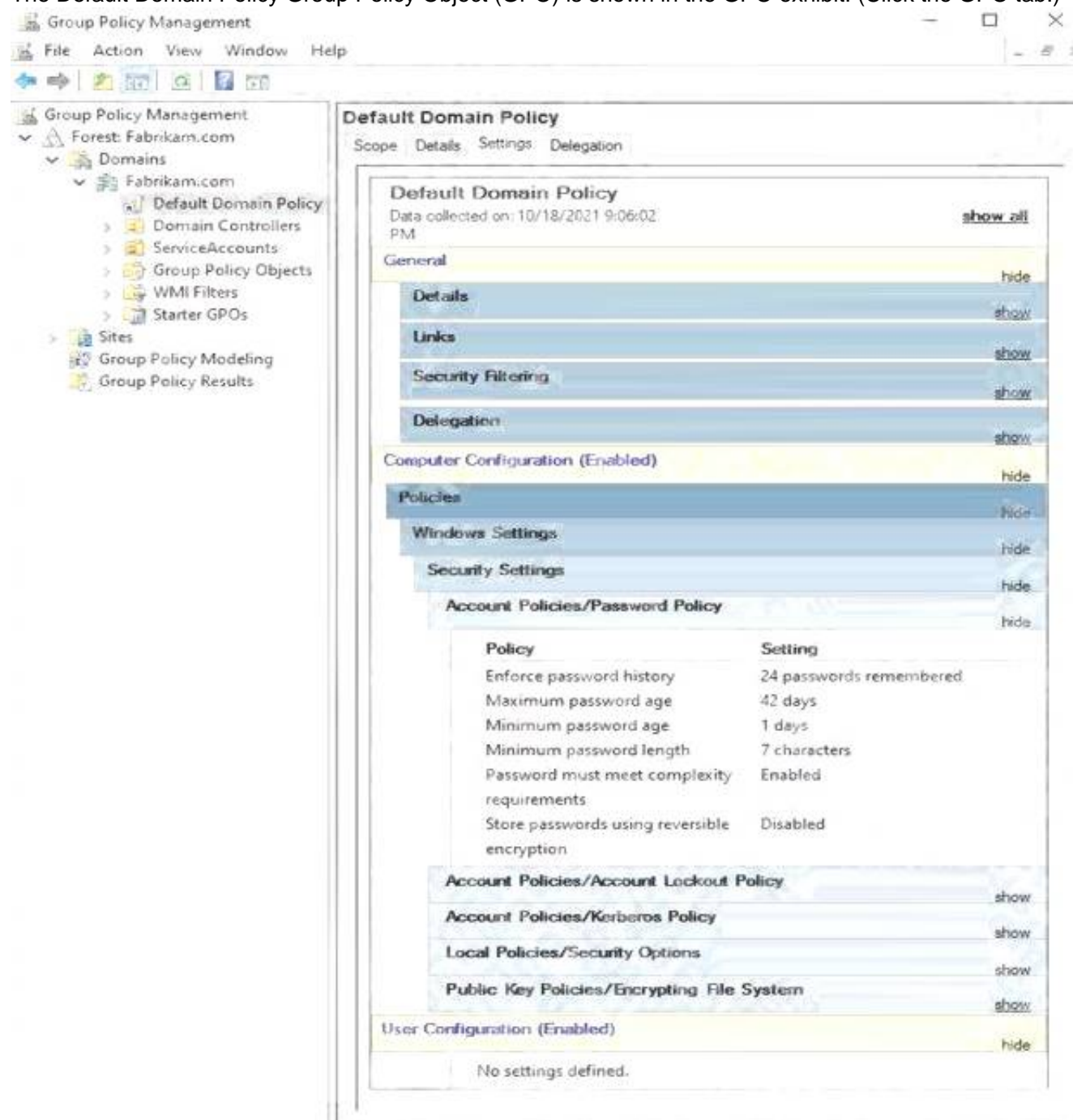
Explanation:

Reference: <https://docs.microsoft.com/en-us/microsoft-365/security/defender-endpoint/customize-controlledfolders?view=o365-worldwide>

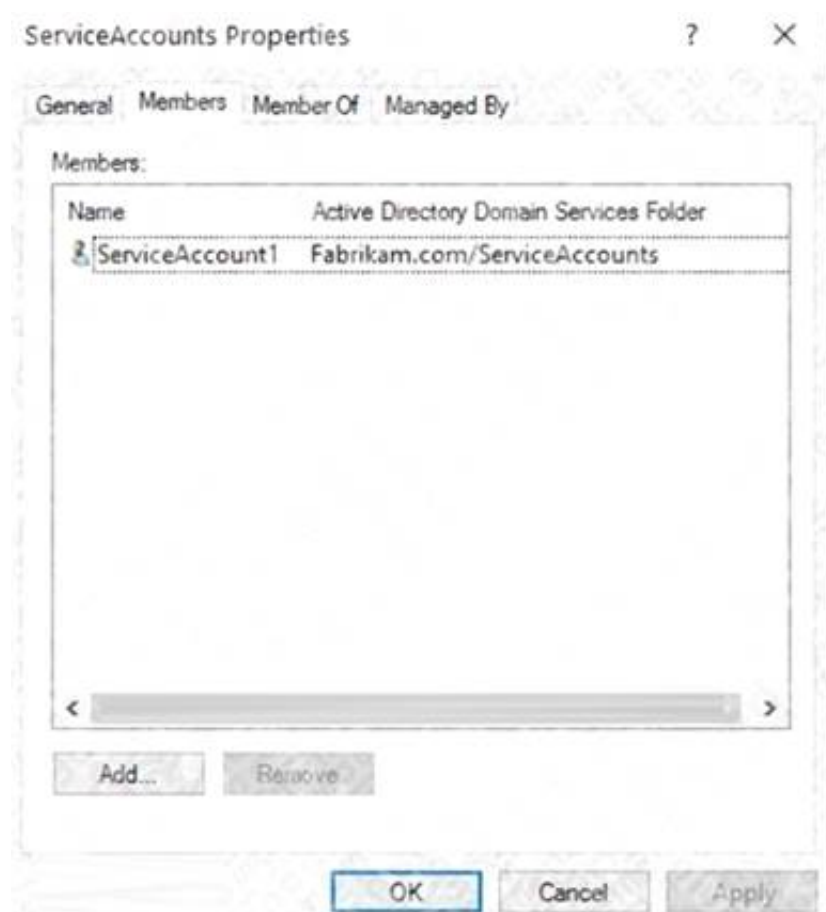
NEW QUESTION 15

HOTSPOT

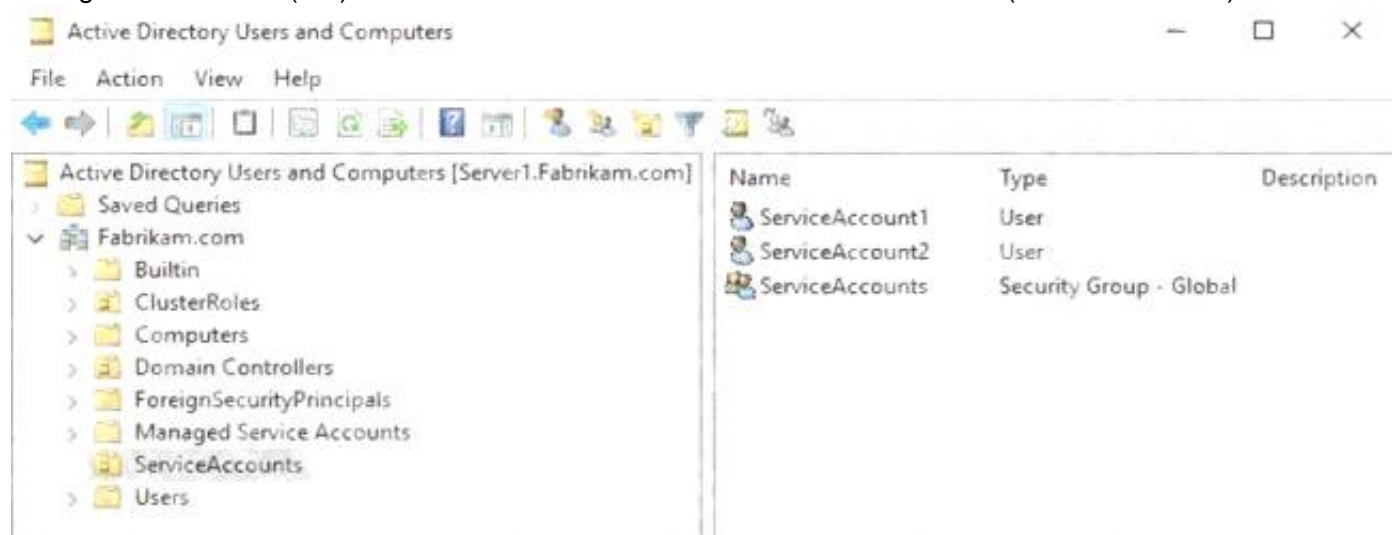
The Default Domain Policy Group Policy Object (GPO) is shown in the GPO exhibit. (Click the GPO tab.)



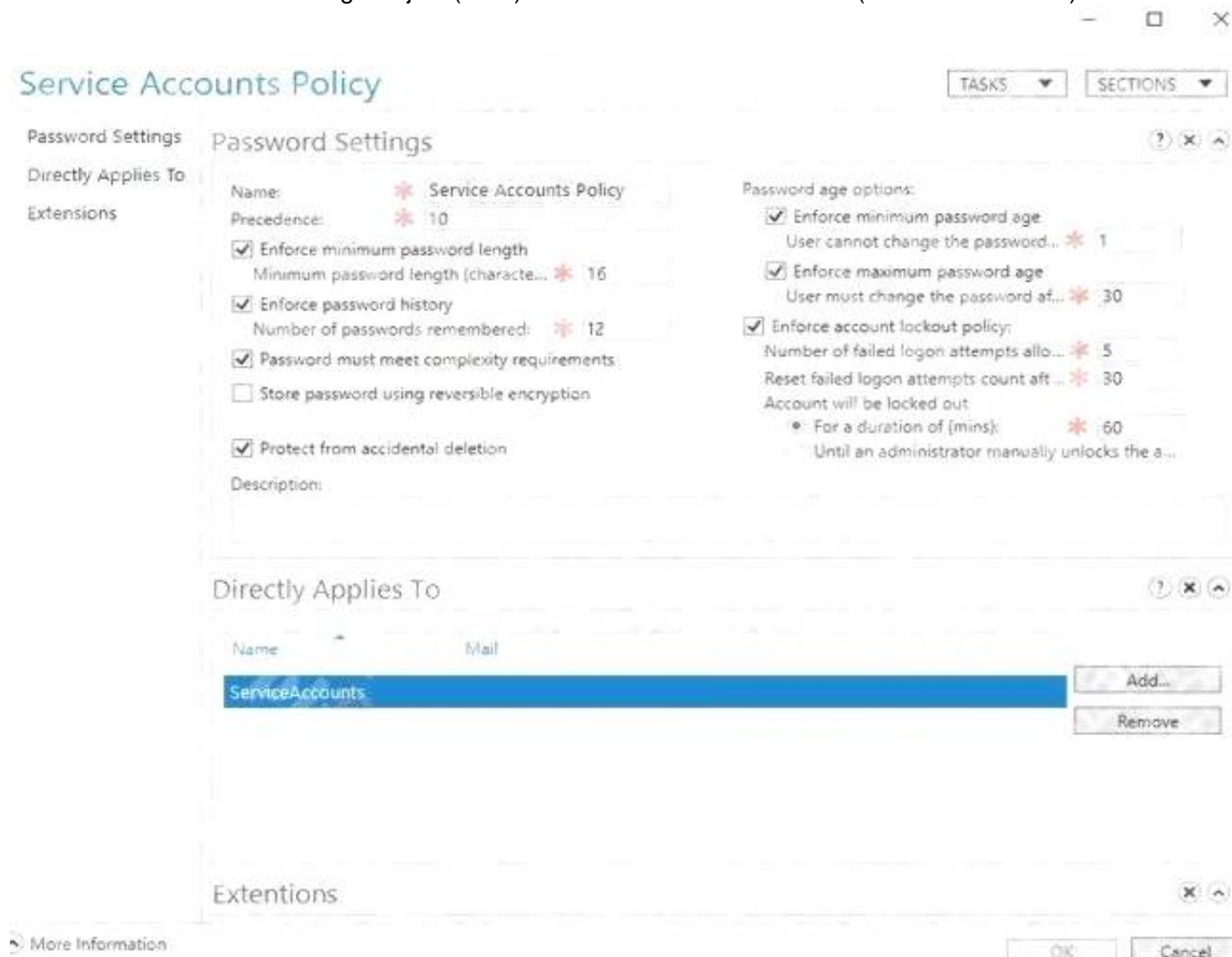
The members of a group named Service Accounts are shown in the Group exhibit. (Click the Group tab.)



An organizational unit (OU) named ServiceAccounts is shown in the OU exhibit. (Click the OU tab.)



You create a Password Settings Object (PSO) as shown in the PSO exhibit. (Click the PSO tab.)



For each of the following statements, select Yes if the statement is true. Otherwise, select No.

NOTE: Each correct selection is worth one point.

Hot Area:

Answer Area

| Statements | Yes | No |
|------------------------------------------------------------------------------------------------|-----------------------|-----------------------|
| The password of ServiceAccount1 must be at least 16 characters long. | <input type="radio"/> | <input type="radio"/> |
| The password of ServiceAccount2 must be at least 16 characters long. | <input type="radio"/> | <input type="radio"/> |
| Accounts that have the Service Accounts Policy applied can change their password to P@\$w0rd1. | <input type="radio"/> | <input type="radio"/> |

- A. Mastered
B. Not Mastered

Answer: A

Explanation:

Reference: https://docs.microsoft.com/en-us/windows-server/identity/ad-ds/get-started/adac/introduction-to-active-directoryadministrativecenterenhancements--level-100-#fine_grained_pswd_policy_mgmt

NEW QUESTION 18

You have an Azure subscription that has Microsoft Defender for Cloud enabled.
You have 50 Azure virtual machines that run Windows Server.
You need to ensure that any security exploits detected on the virtual machines are forwarded to Defender for Cloud.
Which extension should you enable on the virtual machines?

- A. Vulnerability assessment for machines
B. Microsoft Dependency agent
C. Log Analytics agent for Azure VMs
D. Guest Configuration agent

Answer: A

Explanation:

Reference: <https://docs.microsoft.com/en-us/azure/defender-for-cloud/deploy-vulnerability-assessment-vm>

NEW QUESTION 21

You have an Azure virtual machine named VM1 that runs Windows Server.
You need to encrypt the contents of the disks on VM1 by using Azure Disk Encryption.
What is a prerequisite for implementing Azure Disk Encryption?

- A. Customer Lockbox for Microsoft Azure
B. an Azure key vault
C. a BitLocker recovery key
D. data-link layer encryption in Azure

Answer: B

Explanation:

Reference: <https://docs.microsoft.com/en-us/azure/virtual-machines/windows/disk-encryption-overview>

NEW QUESTION 22

Your network contains an Active Directory Domain Services (AD DS) domain. The domain contains two servers named Server1 and Server2 that run Windows Server.
You need to ensure that you can use the Computer Management console to manage Server2. The solution must use the principle of least privilege.
Which two Windows Defender Firewall with Advanced Security rules should you enable on Server2? Each correct answer presents part of the solution.
NOTE: Each correct selection is worth one point.

- A. the COM+ Network Access (DCOM-In) rule
B. all the rules in the Remote Event Log Management group
C. the Windows Management Instrumentation (WMI-In) rule
D. the COM+ Remote Administration (DCOM-In) rule
E. the Windows Management Instrumentation (DCOM-In) rule

Answer: AB

Explanation:

Reference: <https://docs.microsoft.com/en-us/windows-server/administration/server-manager/configure-remote-managementin-servermanager>

NEW QUESTION 27

Note: This question is part of a series of questions that present the same scenario. Each question in the series contains a unique solution that might meet the stated goals. Some question sets might have more than one correct solution, while others might not have a correct solution.
After you answer a question in this section, you will NOT be able to return to it. As a result, these questions will not appear in the review screen.
You have a failover cluster named Cluster1 that hosts an application named App1.
The General tab in App1 Properties is shown in the General exhibit. (Click the General tab.)

App1 Properties

General Failover

App1

Name:
App1

Preferred Owners
 Select the preferred owners for this clustered role. Use the buttons to list them in order from most preferred at the top to least preferred at the bottom.

☐ Server1
☐ Server2

Priority: Medium

Status: Running
 Node: Server2

OK Cancel Apply

The Failover tab in App1 Properties is shown in the Failover exhibit. (Click the Failover tab.)

App1 Properties

General Failover

Failover
 Specify the number of times the Cluster service will attempt to restart or fail over the clustered role in the specified period.
 If the clustered role fails more than the maximum in the specified period, it will be left in the failed state.

Maximum failures in the specified period: 3

Period (hours): 6

Failback
 Specify whether the clustered role will automatically fail back to the most preferred owner (which is set on the General tab).

☐ Prevent failback
☒ Allow failback

☒ Immediately
☐ Failback between 0 and 0 hours

OK Cancel Apply

Server1 shuts down unexpectedly.

You need to ensure that when you start Server1, App1 continues to run on Server2.

Solution: You increase Maximum failures in the specified period for the App1 cluster role.

Does this meet the goal?

- A. Yes
- B. No

Answer: B

Explanation:

The Maximum failures setting is used to determine when the cluster determines that a node is offline. It does not affect whether a cluster will fail back when a node comes online.

NEW QUESTION 31

Note: This question is part of a series of questions that present the same scenario. Each question in the series contains a unique solution that might meet the stated goals. Some question sets might have more than one correct solution, while others might not have a correct solution.

After you answer a question in this section, you will NOT be able to return to it. As a result, these questions will not appear in the review screen.

You have a failover cluster named Cluster1 that hosts an application named App1.

The General tab in App1 Properties is shown in the General exhibit. (Click the General tab.)

App1 Properties

General Failover

App1

Name: App1

Preferred Owners
 Select the preferred owners for this clustered role. Use the buttons to list them in order from most preferred at the top to least preferred at the bottom.

☐ Server1
☐ Server2

Priority: Medium

Status: Running

Node: Server2

OK Cancel Apply

The Failover tab in App1 Properties is shown in the Failover exhibit. (Click the Failover tab.)

App1 Properties

General Failover

Failover
 Specify the number of times the Cluster service will attempt to restart or fail over the clustered role in the specified period.
 If the clustered role fails more than the maximum in the specified period, it will be left in the failed state.

Maximum failures in the specified period: 3

Period (hours): 6

Failback
 Specify whether the clustered role will automatically fail back to the most preferred owner (which is set on the General tab).

☐ Prevent failback
☒ Allow failback

☒ Immediately
☐ Failback between 0 and 0 hours

OK Cancel Apply

Server1 shuts down unexpectedly.
 You need to ensure that when you start Server1, App1 continues to run on Server2.
 Solution: From the General settings, you move Server2 up.
 Does this meet the goal?

- A. Yes
- B. No

Answer: B

Explanation:

Server1 and Server2 are both unticked so the order they are listed in has no effect on whether the cluster will fail back.

NEW QUESTION 35

You have a failover cluster named Cluster1 that has the following configurations:
 Number of nodes: 6
 Quorum: Dynamic quorum
 Witness: File share, Dynamic witness
 What is the maximum number of nodes that can fail simultaneously while maintaining quorum?

- A. 1
- B. 2
- C. 3
- D. 4
- E. 5

Answer: C

Explanation:

Note this question is asking about nodes failing ‘simultaneously’, not nodes failing one after the other.
With six nodes and one witness, there are seven votes. To maintain quorum there needs to be four votes available (four votes is the majority of seven). This means that a minimum of three nodes plus the witness need to remain online for the cluster to function. Therefore, the maximum number of simultaneous failures is three.
Reference: <https://docs.microsoft.com/en-us/windows-server/storage/storage-spaces/understand-quorum>

NEW QUESTION 37

Your company uses Storage Spaces Direct.
You need to view the available storage in a Storage Space Direct storage pool.
What should you use?

- A. System Configuration
- B. File Server Resource Manager (FSRM)
- C. the Get-StorageFileServer cmdlet
- D. Failover Cluster Manager

Answer: D

Explanation:

If Failover Cluster Manager, select the Storage Space Direct storage pool. The information displayed in the main window includes the free space and used space.

NEW QUESTION 39

DRAG DROP
You have two Azure virtual machines named VM1 and VM2. VM1 is backed up to an Azure Recovery Services vault daily and retains backups for 30 days.
You need to restore an individual file named C:\Data\Important.docx from VM1 to VM2. The solution must minimize administrative effort.
Which four actions should you perform in sequence? To answer, move the appropriate actions from the list of actions to the answer area and arrange them in the correct order.
Select and Place:

| Actions | Answer Area |
|--------------------------------------------------|-------------|
| Unmount the disks. | |
| Download the file recovery script for VM1. | |
| Copy the file by using Azure Storage Explorer. | |
| Copy the file by using File Explorer. | |
| Restore the file by using Windows Server Backup. | |
| Run the file recovery script on VM2. | |

- A. Mastered
- B. Not Mastered

Answer: A

Explanation:

Reference: <https://docs.microsoft.com/en-us/azure/backup/backup-azure-restore-files-from-vm>

NEW QUESTION 40

HOTSPOT
You have three servers named Host1, Host2, and VM1 that run Windows Server. Host1 and Host2 have the Hyper-V server role installed. VM1 is a virtual machine hosted on Host1.
You configure VM1 to replicate to Host2 by using Hyper-V Replica.
Which types of failovers can you perform on VM1 on each host? To answer, select the appropriate options in the answer area.
NOTE: Each correct selection is worth one point.
Hot Area:

Answer Area

VM1 on Host1:

| |
|------------------------------------|
| Failover only |
| Test Failover only |
| Planned Failover only |
| Failover and Planned Failover only |
| Test Failover and Failover only |

VM1 on Host2:

| |
|------------------------------------|
| Failover only |
| Test Failover only |
| Planned Failover only |
| Failover and Planned Failover only |
| Test Failover and Failover only |

- A. Mastered
 B. Not Mastered

Answer: A

Explanation:

Answer Area

VM1 on Host1:

| |
|------------------------------------|
| Failover only |
| Test Failover only |
| Planned Failover only |
| Failover and Planned Failover only |
| Test Failover and Failover only |

VM1 on Host2:

| |
|------------------------------------|
| Failover only |
| Test Failover only |
| Planned Failover only |
| Failover and Planned Failover only |
| Test Failover and Failover only |

NEW QUESTION 44

You have 200 Azure virtual machines.
 You create a recovery plan in Azure Site Recovery to fail over all the virtual machines to an Azure region. The plan has three manual actions.
 You need to replace one of the manual actions with an automated process.
 What should you use?

- A. an Azure Desired State Configuration (DSC) virtual machine extension
 B. an Azure Automation runbook
 C. an Azure PowerShell function
 D. a Custom Script Extension on the virtual machines

Answer: B

Explanation:

Reference:
<https://docs.microsoft.com/en-us/azure/site-recovery/recovery-plan-overview>

NEW QUESTION 46

You need to meet technical requirements for Share1.
 What should you use?

- A. Storage Migration Service
 B. File Server Resource Manager (FSRM)
 C. Server Manager
 D. Storage Replica

Answer: A

Explanation:

Reference: <https://docs.microsoft.com/en-us/windows-server/storage/storage-migration-service/overview>

NEW QUESTION 50

DRAG DROP

Your network contains an Active Directory Domain Services (AD DS) domain named contoso.com. The functional level of the forest and the domain is Windows Server 2012 R2. The domain contains the domain controllers shown in the following table.

| Name | Operating system | FSMO role |
|------|------------------------|-----------|
| DC1 | Windows Server 2012 R2 | All |
| DC2 | Windows Server 2022 | None |
| DC3 | Windows Server 2019 | None |

You need to raise the forest functional level to Windows Server 2016. The solution must meet the following requirements:

Ensure that there are three domain controllers after you raises the level. Minimize how long the FSMO roles are unavailable.

Which three actions should you perform in sequence? To answer, move the appropriate actions from the list of actions to the answer area and arrange them in the correct order.

Select and Place:

Actions

Install the Active Directory Migration Tool (ADMT).

Deploy an additional domain controller.

Raise the domain and forest functional level.

Upgrade DC3.

Migrate computer accounts by using the Active Directory Migration Tool (ADMT).

Upgrade DC1.

Create a custom AD DS partition.

Move the FSMO roles to DC2.

Answer Area

- A. Mastered
- B. Not Mastered

Answer: A

Explanation:

Actions

Install the Active Directory Migration Tool (ADMT).

Deploy an additional domain controller.

Upgrade DC3.

Migrate computer accounts by using the Active Directory Migration Tool (ADMT).

Create a custom AD DS partition.

Answer Area

Move the FSMO roles to DC2.

Upgrade DC1.

Raise the domain and forest functional level.

NEW QUESTION 54

You have an on-premises server that runs Windows Server and has the Web Server (IIS) server role installed. The server hosts a web app that connects to an on-premises Microsoft SQL Server database.

You plan to migrate the web app to an Azure App Services web app. The database will remain on-premises.

You need to ensure that the migrated web app can access the database.

What should you configure in Azure?

- A. an Azure SQL managed instance
- B. an on-premises data gateway
- C. Azure Extended Network
- D. a Hybrid Connection

Answer: D

Explanation:
 Reference: <https://docs.microsoft.com/en-us/azure/app-service/app-service-hybrid-connections>

NEW QUESTION 57

You have two file servers named Server1 and Server2 that run Windows Server. Server1 contains a shared folder named Data. Data contains 10TB of data. You plan to decommission Server1. You need to migrate the files from Data to a new shared folder on Server2. The solution must meet the following requirements: Ensure that share, file, and folder permissions are copied. After the initial copy occurs, ensure that changes in \\Server1\Data can be synced to the destination without initiating a full copy. Minimize administrative effort. What should you use?

- A. xcopy
- B. Storage Replica
- C. Storage Migration Service
- D. azcopy

Answer: C

Explanation:
 Reference: <https://docs.microsoft.com/en-us/windows-server/storage/storage-migration-service/overview#why-use-storagemigration-service>

NEW QUESTION 59

DRAG DROP
 Your network contains an Active Directory Domain Services (AD DS) domain. The domain contains a print server named Server1. All printers are deployed to users by using a Group Policy Object (GPO) named GPO1. You deploy a new server named Server2. You need to decommission Server1. The solution must meet the following requirements: Migrate the shared printers to Server2 by using the Printer Migration Wizard. Ensure that the users use the printers on Server2. Minimize downtime for the users. Which four actions should you perform in sequence? To answer, move the appropriate actions from the list of actions to the answer area and arrange them in the correct order. Select and Place:

| Actions | Answer Area |
|----------------------------------------------------------|-------------|
| Decommission Server1. | |
| Import the printers on Server2. | |
| Deploy Windows Server Hybrid Cloud Print. | |
| Export the printers on Server1. | |
| Update the service principal name (SPN) of each printer. | |
| Modify GPO1. | |

- A. Mastered
- B. Not Mastered

Answer: A

Explanation:
 Reference: <https://docs.microsoft.com/en-us/archive/blogs/canitpro/step-by-step-migrating-print-servers-from-windowsserver-2008-towindowsserver-2012>

NEW QUESTION 61

You have a server named Server1 that runs Windows Server and has the Hyper-V server role installed. You import the Azure Migrate appliance as VM1. You need to register VM1 with Azure Migrate. What should you do in Azure Migrate? Each correct answer presents part of the solution. NOTE: Each correct selection is worth one point.

- A. Create a project.
- B. Add a migration tool.
- C. Add an assessment tool.
- D. Generate a project key.
- E. Download the Azure Migrate installer script ZIP file.

Answer: ADE

Explanation:
 Reference:
<https://docs.microsoft.com/en-us/azure/migrate/how-to-set-up-appliance-hyper-v>

NEW QUESTION 65

You have two servers that run Windows Server as shown in the following table.

| Name | Location | Domain/workgroup |
|---------|-----------------------|------------------|
| Server1 | On-premises | Domain |
| Server2 | Azure virtual machine | Workgroup |

You need to copy the contents of volume E from Server1 to Server2. The solution must meet the following requirements:
Ensure that files in-use are copied. Minimize administrative effort.
What should you use?

- A. Storage Migration Service
- B. Azure File Sync
- C. Azure Backup
- D. Storage Replica

Answer: A

NEW QUESTION 66

Note: This question is part of a series of questions that present the same scenario. Each question in the series contains a unique solution that might meet the stated goals. Some question sets might have more than one correct solution, while others might not have a correct solution.
After you answer a question in this section, you will NOT be able to return to it. As a result, these questions will not appear in the review screen.
Your network contains a single-domain Active Directory Domain Services (AD DS) forest named contoso.com. The functional level of the forest is Windows Server 2012 R2. All domain controllers run Windows Server 2012 R2.
Sysvol replicates by using the File Replication Service (FRS).
You plan to replace the existing domain controllers with new domain controllers that will run Windows Server 2022.
You need to ensure that you can add the first domain controller that runs Windows Server 2022.
Solution: You migrate sysvol from FRS to Distributed File System (DFS) Replication.
Does this meet the goal?

- A. Yes
- B. No

Answer: A

Explanation:

Reference:
<https://www.rebeladmin.com/2021/09/step-by-step-guide-active-directory-migration-from-windows-server-2008-r2-to-windows-server-2022/>

NEW QUESTION 71

Note: This question is part of a series of questions that present the same scenario. Each question in the series contains a unique solution that might meet the stated goals. Some question sets might have more than one correct solution, while others might not have a correct solution.
After you answer a question in this section, you will NOT be able to return to it. As a result, these questions will not appear in the review screen.
Your network contains a single-domain Active Directory Domain Services (AD DS) forest named contoso.com. The functional level of the forest is Windows Server 2012 R2. All domain controllers run Windows Server 2012 R2.
Sysvol replicates by using the File Replication Service (FRS).
You plan to replace the existing domain controllers with new domain controllers that will run Windows Server 2022.
You need to ensure that you can add the first domain controller that runs Windows Server 2022.
Solution: You run the Active Directory Migration Tool (ADMT).
Does this meet the goal?

- A. Yes
- B. No

Answer: B

NEW QUESTION 75

You have an on-premises network and an Azure virtual network.
You establish a Site-to-Site VPN connection from the on-premises network to the Azure virtual network, but the connection frequently disconnects.
You need to debug the IPsec tunnel from Azure.
Which Azure VPN Gateway diagnostic log should you review?

- A. GatewayDiagnosticLog
- B. RouteDiagnosticLog
- C. IKEDiagnosticLog
- D. TunnelDiagnosticLog

Answer: D

Explanation:

Reference: <https://docs.microsoft.com/en-us/azure/vpn-gateway/troubleshoot-vpn-with-azure-diagnostics>

NEW QUESTION 80

You have an Azure virtual machine named VM1 that has the Web Server (IIS) server role installed. VM1 hosts a critical line-of-business (LOB) application.
After the security team at your company deploys a new security baseline to VM1, users begin reporting that the application is unresponsive.
You suspect that the security baseline has caused networking issues.
You need to perform a network trace on VM1.
What should you do?

- A. From VM1, run netstat.
- B. From Performance Monitor on VM1, create a Data Collector Set.
- C. From the Azure portal, configure the Diagnostics settings for VM1.
- D. From the Azure portal, configure the Performance diagnostics settings for VM1.

Answer: D

Explanation:

Reference: <https://docs.microsoft.com/en-us/troubleshoot/azure/virtual-machines/performance-diagnostics>

NEW QUESTION 83

You have an Azure virtual machine named VM1. Crash dumps for a process named Process1 are enabled for VM1.

When process1.exe on VM1 crashes, a technician must access the memory dump files on the virtual machine. The technician must be prevented from accessing the virtual machine.

To what should you provide the technician access?

- A. an Azure file share
- B. an Azure Log Analytics workspace
- C. an Azure Blob Storage container
- D. a managed disk

Answer: C

Explanation:

Reference: <https://docs.microsoft.com/en-us/azure/azure-monitor/agents/diagnostics-extension-overview>

NEW QUESTION 86

You have five Azure virtual machines.

You need to collect performance data and Windows Event logs from the virtual machines. The data collected must be sent to an Azure Storage account.

What should you install on the virtual machines?

- A. the Azure Connected Machine agent
- B. the Azure Monitor agent
- C. the Dependency agent
- D. the Telegraf agent
- E. the Azure Diagnostics extension

Answer: E

Explanation:

Reference: <https://docs.microsoft.com/en-us/azure/azure-monitor/agents/diagnostics-extension-overview>

NEW QUESTION 90

HOTSPOT

You have a server named Server1 that runs Windows Server.

On Server1, you create a Data Collector Set named CollectorSet1 based on the Basic template.

You need to configure CollectorSet1 to meet the following requirements:

Older performance counter logs must be overwritten by new ones.

Performance counter logging must stop if there is less than 500 MB of free disk space.

What should you configure for each requirement? To answer, select the appropriate options in the answer area.

NOTE: Each correct selection is worth one point.

Hot Area:

Answer Area

| | |
|----------------------------------------------------------------------------------------|--------------------------------------------------------------------------------------------------------------------------------------------------|
| Older performance counter logs must be overwritten by new ones: | <div><div></div><div>The Configuration properties</div><div>The Data Manager properties</div><div>The Performance Counter properties</div></div> |
| Performance counter logging must stop if there is less than 500 MB of free disk space: | <div><div></div><div>The Configuration properties</div><div>The Data Manager properties</div><div>The Performance Counter properties</div></div> |

- A. Mastered
- B. Not Mastered

Answer: A

Explanation:

Answer Area

Older performance counter logs must be overwritten by new ones:

The Configuration properties
The Data Manager properties
The Performance Counter properties

Performance counter logging must stop if there is less than 500 MB of free disk space:

The Configuration properties
The Data Manager properties
The Performance Counter properties

NEW QUESTION 93

You have a Site-to-Site VPN between an on-premises network and an Azure VPN gateway. BGP is disabled for the Site-to-Site VPN.

You have an Azure virtual network named Vnet1 that contains a subnet named Subnet1. Subnet1 contains a virtual machine named Server1.

You can connect to Server1 from the on-premises network.

You extend the address space of Vnet1. You add a subnet named Subnet2 to Vnet1. Subnet2 uses the extended address space. You deploy an Azure virtual machine named Server2 to Subnet2.

You cannot connect to Server2 from the on-premises network. Server1 can connect to Server2.

You need to ensure that you can connect to Subnet2 from the on-premises network.

What should you do?

- A. Add an additional Site-to-Site VPN between the on-premises network and Vnet1.
- B. Add a private endpoint to Subnet2.
- C. To Subnet2, add a route table that contains a user-defined route.
- D. Update the routing information on the on-premises routers.

Answer: D

NEW QUESTION 97

.....

Thank You for Trying Our Product

We offer two products:

1st - We have Practice Tests Software with Actual Exam Questions

2nd - Questions and Answers in PDF Format

AZ-801 Practice Exam Features:

- * AZ-801 Questions and Answers Updated Frequently
- * AZ-801 Practice Questions Verified by Expert Senior Certified Staff
- * AZ-801 Most Realistic Questions that Guarantee you a Pass on Your FirstTry
- * AZ-801 Practice Test Questions in Multiple Choice Formats and Updatesfor 1 Year

100% Actual & Verified — Instant Download, Please Click
[Order The AZ-801 Practice Test Here](#)