



**Microsoft**

**Exam Questions PL-900**

Microsoft Power Platform Fundamentals

### NEW QUESTION 1

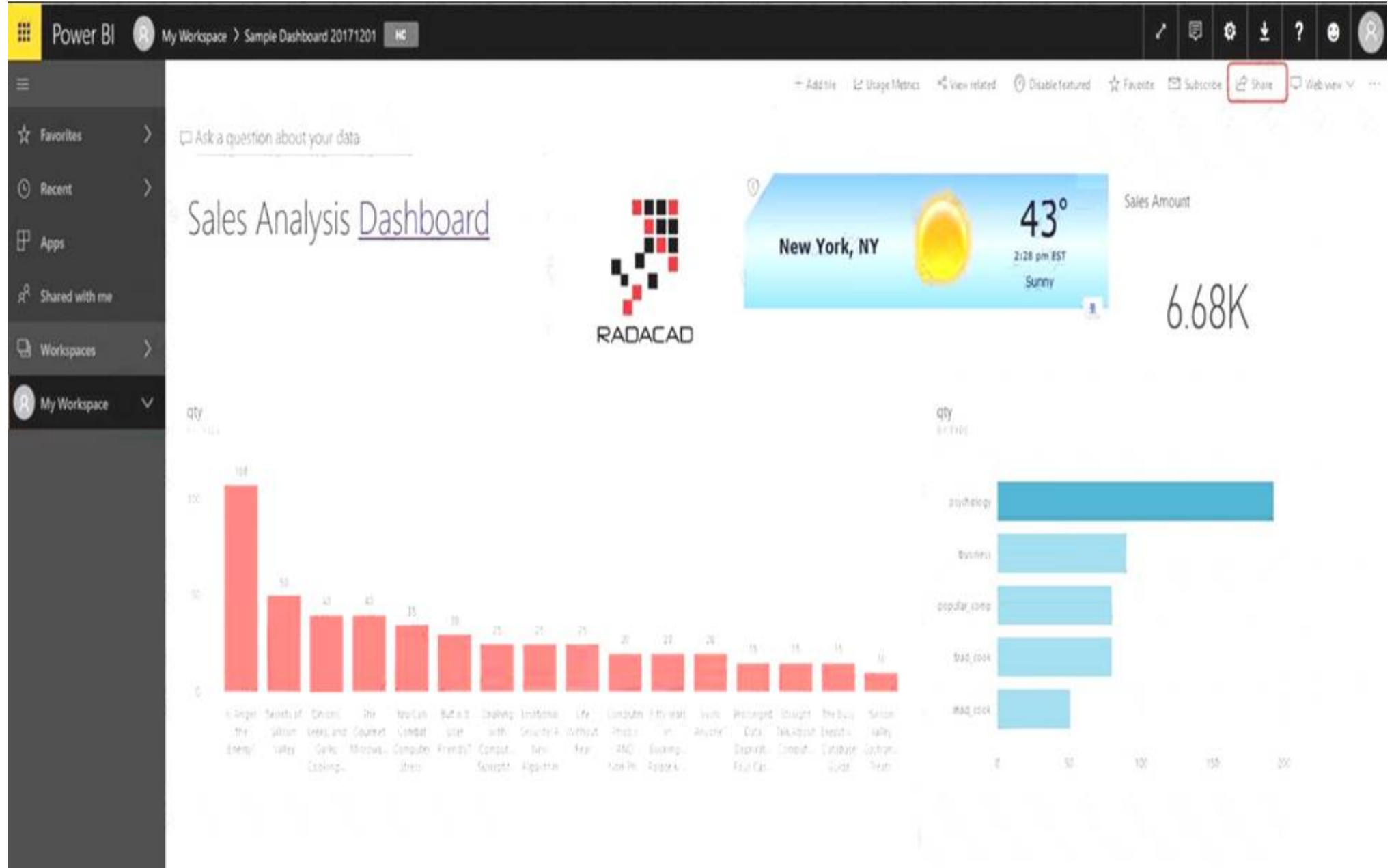
You create a Power BI dashboard that displays data from Dynamics 365 Customer Engagement. You need to share the Power BI dashboard with coworkers. What are three possible ways to achieve the goal? Each correct answer presents a complete solution.  
 NOTE: Each correct selection is worth one point.

- A. Create a Power BI workspace and grant coworkers permissions.
- B. Publish the dashboard as an app to your coworkers.
- C. Export the data into Common Data Service for others to manipulate in Power BI.
- D. Export the data to Microsoft Excel for coworkers to import and view in Power BI.
- E. Embed reports in your company's internal web portal.

**Answer:** ABE

#### Explanation:

A: Basic Sharing for Dashboards and Reports through a workspace is the most common way of sharing the Power BI content. Basic Sharing is very simple and easy to use method. You can simply click on the Share button in the dashboard or report, and then share it with other users.



B: Apps are great sharing method for multiple environment, and best way of sharing for users in production environment.

Power BI App is the solution for multiple environment approach. With Power BI App, your development environment (workspace), and user environment (App) are isolated from each other.

Note: If you are using SharePoint online as a portal for document management and some other reasons already, then consider using Embed in SharePoint Online feature of Power BI reports. This method is secure and you can share the report only with Power BI users you want.

E: Sometimes, you don't need a secure way of sharing, you may search for an easy and free way of sharing, and your content is not confidential or sensitive. Publish to web is your friend in such situation. This is the only free way of sharing in Power BI, but be aware that this method is not secure.

Publish to web method, gives you an embed code, which you can use in any web pages to embed the Power BI report in it

### NEW QUESTION 2

A user is trying to understand the differences between the various ways apps can be built by using Power Apps. For each of the following statements, select Yes if the statement is true. Otherwise, select No.  
 NOTE: Each correct selection is worth one point.

Statement	Yes	No
You can embed canvas apps in model-driven apps.	<input type="radio"/>	<input type="radio"/>
A Power Apps portal can use only one data source.	<input type="radio"/>	<input type="radio"/>
You must use Power BI to create reports in model-driven apps.	<input type="radio"/>	<input type="radio"/>

- A. Mastered  
B. Not Mastered

**Answer:** A

**Explanation:**

Box 1: Yes

You can create a canvas app and then embed that within a model driven app. Box 2: No

With the capability to build a portal in PowerApps, you can create a website for external and internal users enabling them to interact with data stored in Common Data Service.

Note: Common Data Service lets you securely store and manage data that's used by business applications. Data within Common Data Service is stored within a set of entities. An entity is a set of records used to store data, similar to how a table stores data within a database. Common Data Service includes a base set of standard entities that cover typical scenarios, but you can also create custom entities specific to your organization and populate them with data using Power Query. App makers can then use PowerApps to build rich applications using this data.

Box 3: Yes

To get started building a report you'll need the latest version of Power BI Desktop and a PowerApps environment with the latest version of the Common Data Service.

**NEW QUESTION 3**

You use Microsoft Flow to create a flow that automatically sends email to a project manager when project team members mark a task as complete.

Project team members are prematurely marking tasks as complete. You must add quality control into the process by sending an email to a project lead for confirmation that the task is in fact complete before sending the email to the project manager.

You need to modify the flow. Which component should you use?

- A. a process argument  
B. a condition  
C. an expression  
D. a trigger  
E. an action

**Answer:** B

**Explanation:**

Use a condition and set the action to send an email.

**NEW QUESTION 4**

You are creating a model-driven Power Apps app. You want to ensure that the app can be used by individuals who have vision impairments.

For each of the following statements, select Yes if the statement is true. Otherwise, select No. NOTE: Each correct selection is worth one point.

Statement	Yes	No
Power Apps apps can be built with hot key support and designed so they do not require a touch screen or mouse.	<input type="radio"/>	<input type="radio"/>
Only model-driven Power Apps have support for using a screen reader without the need for a connector.	<input type="radio"/>	<input type="radio"/>
The accessibility checker can be run for your Power Apps app to provide notifications of accessibility violations as well as tips for making it even more user friendly.	<input type="radio"/>	<input type="radio"/>

- A. Mastered
- B. Not Mastered

Answer: A

Explanation:

Box 1: Yes

You can use keyboard shortcuts in PowerApps. Keyboard shortcuts give you an alternate way to do common tasks instead of using your mouse or tapping with your finger. They help in seamless navigation of the interface.

Box 2: No

The following software combinations are the supported recommendations for consuming PowerApps with a screen reader:

Windows: Microsoft Edge / Narrator macOS: Safari / VoiceOver Android: PowerApps app / Talkback iOS: PowerApps app / VoiceOver

Box 3: Yes

Users who have vision, hearing, or other impairments can use your canvas app more easily and successfully if you consider accessibility as you design how the app looks and behaves. If you're not sure how to make your app more accessible, you can run the Accessibility checker in PowerApps Studio. This tool not only finds potential accessibility issues but also explains why each might be a potential problem for users who have a specific disability and offers suggestions on how to resolve each issue. The Accessibility checker detects screen-reader and keyboard issues for you, and you can find information about how to fix color-contrast issues by using accessible colors.

NEW QUESTION 5

A company is building a Power Apps portal.

You need to select out-of-the-box portal types to meet the company's requirements.

Which portal types should you use? To answer, drag the appropriate portal types to the correct requirements. Each portal type may be used once, more than once, or not at all. You may need to drag the split bar between panes or scroll to view content.

NOTE: Each correct selection is worth one point.

Portal types	Requirement	Answer Area
partner portal		
community portal	Collaboratively onboard new suppliers and distributors.	Portal type
portal from blank	Publish a blog post announcing new suppliers.	Portal type
customer self-service portal		

- A. Mastered
- B. Not Mastered

Answer: A

Explanation:

Box 1: Partner portal

A partner portal allows every organization with resellers, distributors, suppliers, or partners to have real-time access to every stage of shared activities.

Box 2: Community portal

A community portal leverages peer-to-peer interactions between customers and experts to organically grow the catalog of available knowledge from knowledge base articles, forums, and blogs as well as providing feedback through comments and ratings.

NEW QUESTION 6

Your company has an on premises Microsoft SQL Server database that contains legacy sales data. You must display information from the database in a new Power Apps app.

You need to establish a secure connection between the database and the app. What should you use?

- A. Data source
- B. App
- C. Gateway
- D. Flow

Answer: C

Explanation:

For an on-premises database, identify a data gateway that was shared with you (or create one).

Specify Connect using on-premises data gateway, type or paste the server name, the database name, the user name, and the password for the database that you want to use, and specify the authentication type and the gateway.

NEW QUESTION 7

A large retail company implements Power Apps, Microsoft Flow, and the Common Data Service.

The board of directors is asking whether users are finding value in the technology. The company would like to measure and report usage of the software.

You need to recommend a tool to determine software usage. What should you recommend?

- A. Microsoft Intune
- B. Azure Stream Analytics
- C. Power Platform Analytics
- D. Dynamics 365 Product Insights

Answer: C

Explanation:

The Power Platform Analytics Usage report is the default reports seen by the logged in environment admin. It provides total app launches and daily active users across all apps in the environment. Admins can filter the view with attributes like device platform, player version, country, state, and city.

NEW QUESTION 8

A company plans to implement solutions that use Common Data Service as a data storage. You need to recommend features to meet the company's needs.

Which features should you recommend? To answer, drag the appropriate features to the correct requirements. Each feature may be used once, more than once, or not at all. You may need to drag the split bar between panes or scroll to view content.

NOTE: Each correct selection is worth one point.

Features	Requirement	Feature
business rules		
business process flows	Validate data across multiple fields and entities regardless of the app used to create data.	Feature
Common Data Model	Create visual guides to ensure that users enter data and perform tasks in a consistent manner.	Feature
	Accelerate development by using a standard set of entities for the most common scenarios.	Feature

- A. Mastered
- B. Not Mastered

Answer: A

Explanation:

Box 1: business rules

You can create business rules and recommendations to apply logic and validations without writing code or creating plug-ins. Business rules provide a simple interface to implement and maintain fast-changing and commonly used rules.

Box 2: business process flows

Flows Power Automate includes several types of processes, each designed for a different purpose:

- Automated flows. Create a flow that performs one or more tasks automatically after it's triggered by an event.
- Button flows. Perform repetitive tasks simply by tapping a button on your mobile device.
- Scheduled flows. Create a flow that performs one or more tasks on a schedule such as once a day, on a specific date, or after a certain time.
- Business process flows. Ensure that people enter data consistently and follow the same steps every time they work in an app by creating a business process flow.
- Workflows and actions. Dynamics 365 customizers may be familiar with the classic Common Data Service processes, which are workflows and actions.

Box 3: Common Data Model

Model-driven app design is a component-focused approach to app development. Model-driven app design doesn't require code and the apps you make can be simple or very complex. Unlike canvas app development where the designer has complete control over app layout, with model-driven apps much of the layout is determined for you and largely designated by the components you add to the app.

NEW QUESTION 9

A company plans to use Microsoft Flow to automate tasks.

Match each flow type to its function. To answer, drag the appropriate flow type from the column on the left to its description on the right. Each option may be used once, more than once, or not at all.

NOTE: Each correct match is worth one point.

Flow types	Answer Area	
	Description	Flow type
automated		
business process	a flow that runs after it is triggered by an event	Flow type
scheduled	a flow that guides a user through a set of tasks	Flow type
instant	a flow that runs after a specified number of days	Flow type
	a flow that allows you to start tasks on-demand	Flow type

- A. Mastered
- B. Not Mastered

Answer: A

Explanation:

Box 1: automated

Automated flows start with an event or trigger, such as an email being received. These also support a multitude of actions in the 200+ Flow connectors.

Box 2: business process

The business process flow that creates stages or screens that enforce a certain sequence of steps. It collects data from users for each step in the stage and can kick off automated workflows.

Box 3: scheduled

Scheduled flows run regular reports that are sent out to a team and summarize everything that's happened in the past week. This includes everything from simple daily scheduling to more complex scheduling like "every 3rd Monday."

Box 4: instant

An instant flow is triggered when you click a button inside of the Flow mobile app, SharePoint, Dynamics, PowerApps, or Excel that passes context directly into your flow.

Note: There are four different Flow types that you can choose from when starting out. You can create a scheduled flow, automated flow, instant flow, or a business process flow.

NEW QUESTION 10

You need to implement Microsoft Business Applications along with the Microsoft Power platform. Which three Microsoft products are part of the Power platform?

Each correct answer presents a complete solution.

NOTE: Each correct selection is worth one point.

- A. Microsoft Power Apps
- B. Azure Active Directory
- C. Microsoft Flow
- D. Azure Machine Learning
- E. Microsoft Power BI

Answer: ACE

Explanation:

The Power Platform uses PowerApps, Power BI, and Power Automate (previously named Flow) to customize, extend, and build all the apps you need for your business and unlock the potential of Office 365 and Dynamics 365.

NEW QUESTION 10

A company plans to create an information portal that managers can use to view critical information about their teams. You need to recommend the type of Power BI components that the company should use. What should you recommend? To answer, drag the appropriate components to the correct requirements. Each component may be used once, more than once, or not at all. You may need to drag the split bar between panes or scroll to view content. NOTE. Each correct selection is worth one point.

Component types	Requirement	Answer Area
<div>Dashboard</div>		
<div>Report</div>	Display data from a Microsoft Excel workbook that has multiple worksheets into one chart.	<div>Component type</div>
	Display the top departmental goal metrics and alert users when specific thresholds targets are met.	<div>Component type</div>
	Display Sales charts that can be filtered by region.	<div>Component type</div>

- A. Mastered
- B. Not Mastered

Answer: A

Explanation:

Box 1: Report  
Reports are more detailed data displayed in many formats like chart, graphs list and in tabular, etc. Box 2: Dashboard  
Dashboards are a business key performance indicator view where it displays key values that can change business profits and can be glanced at one screen. Box 3: Report  
Power BI dashboards cannot slice and dice, but reports have many ways to filter and slice.  
Note: Power BI dashboards are one placeholder to display the most important decision-making facts to run a business. But reports are more detailed data displayed in many formats like chart, graphs list and in tabular, etc. Reports are based on one dataset or one business unit data for example reports of a store belonging to California.

NEW QUESTION 15

A company plans to use Power BI to visualize data from business systems. For each of the following statements, select Yes if the statement is true. Otherwise, select No. NOTE: Each correct selection is worth one point.

Statement	Yes	No
You can display data aggregates and raw data in a Power BI report.	<input type="radio"/>	<input type="radio"/>
You can display related data from Dynamics 365 Customer Engagement and Excel in the same Power BI report.	<input type="radio"/>	<input type="radio"/>
You create a Power App to supply data for a Power BI report. You can modify the data directly in the report.	<input type="radio"/>	<input type="radio"/>

- A. Mastered
- B. Not Mastered

Answer: A

Explanation:

Box 1: Yes

The following list provides advantages to using aggregations:

Query performance over big data - as users interact with visuals on Power BI reports, DAX queries are submitted to the dataset. Boost query speeds by caching data at the aggregated level, using a fraction of the resources required at the detail level. Unlock big data in a way that would otherwise be impossible.

Box 2: No

You can connect to model-driven apps in Dynamics 365 with Power BI Desktop to create custom reports and dashboards for use with the Power BI service.

You can use similar steps to connect to model-driven apps in Dynamics 365 using Office Excel Power Query by selecting From Other Sources on the Power Query tab in Excel.

Box 3: Yes

Using the PowerApps custom visual, you will be able to pass context aware data to a PowerApps app which updates in real time as you make changes to your report.

NEW QUESTION 17

A bank uses Power Platform apps and flows to support business processes.

The company would like to use historical client data to predict whether a client's loan application is likely to be approved or rejected.

You need to use AI Builder to implement the solution.

Which four actions should you perform in sequence? To answer, move the appropriate actions from the list of actions to the answer area and arrange them in the correct order.

Actions

Publish the model.

Export data into AI Builder.

Train the model.

Import data into Common Data Service.

Use the model in PowerApps or Microsoft Flow.

Answer area

- A. Mastered
- B. Not Mastered

Answer: A

Explanation:

Step 1: Import data into Common Data Service.

AI Builder requires the use of Common Data Service, which is the data platform for PowerApps and allows you to store and manage business data. Common Data Service is the platform on which Dynamics 365 apps are built so if you're a Dynamics 365 customer, your data is already in Common Data Service.

Step 2: Train the model Step 3: Publish the model

The last step is to publish your model.

Step 4: Use the model in PowerApps or Microsoft Flow.

NEW QUESTION 20

You are designing a Power Apps solution that allows users to upload a status report directly to the company Microsoft SharePoint project management site from their mobile device.

For each of the following statements, select Yes if the statement is true. Otherwise, select No.

NOTE: Each correct selection is worth one point.

Statement	Yes	No
You should build a model-driven app in Power Apps.	<input type="radio"/>	<input type="radio"/>
You should build a canvas app in Power Apps.	<input type="radio"/>	<input type="radio"/>
Users must download and run the Power Apps mobile application to use the solution.	<input type="radio"/>	<input type="radio"/>

- A. Mastered
- B. Not Mastered

Answer: A

Explanation:

Box 1: No

Box 2: Yes

Box 3: Yes

When you create an app, or someone shares an app with you, you can run that app on Windows, iOS, Android, or in a web browser.

References:

<https://docs.microsoft.com/en-us/powerapps/maker/canvas-apps/app-from-sharepoint> <https://docs.microsoft.com/en-us/powerapps/user/run-app-client>

NEW QUESTION 24

You create a business rule on contact entity to enforce the requirement that users must enter either a telephone number, fax number, or an email when creating a new record.

The company decides to remove fax number from the condition. You need to update the business rule.

What are two ways of achieving the goal? Each correct answer presents a complete solution.

NOTE: Each correct selection is worth one point.

- A. Save a copy of the rule and change the condition.
- B. Deactivate and delete the original rule.
- C. Deactivate the business rule and change the condition.
- D. Take a snapshot of the business rule and change the condition.
- E. Change the condition and activate the change.

Answer: AD

NEW QUESTION 27

A company plans to implement Power Platform apps. The company does not plan to use any development tools or plug-ins.

Which actions can you perform?

For each of the following statements, select Yes if the statement is true. Otherwise, select No. NOTE: Each correct selection is worth one point.

Statement	Yes	No
You can synchronize account names with a third-party proprietary database.	<input type="radio"/>	<input type="radio"/>
You can create invoices from orders and then send the invoices to the customer.	<input type="radio"/>	<input type="radio"/>

- A. Mastered
- B. Not Mastered

Answer: A

Explanation:

The Power Platform uses PowerApps, Power BI, and Power Automate (previously named Flow) to customize, extend, and build all the apps you need for your business and unlock the potential of Office 365 and Dynamics 365.

NEW QUESTION 32

A company uses a third party application and an approval process via email. At the end of the month, the IT department enters the data into Microsoft Excel to create pivot charts.

The Excel pivot charts must use the same data source as Dynamics 365 Field Service to generate charts and reports.

You need to recommend a solution.

What should you recommend? To answer, select the appropriate configuration in the answer area.

NOTE: Each correct selection is worth one point.

Requirement	Solution
Create an approval workflow.	<div><div></div><div>Dynamics 365 Workflow Notifications</div><div>Microsoft Outlook Integration</div><div>AI Builder</div><div>Microsoft Flow</div></div>
Connect to report data.	<div><div></div><div>Common Data Service and Power BI</div><div>Third-party from AppSource</div><div>Custom Code flat file integration</div><div>Dynamics 365 Field Service</div></div>

- A. Mastered
- B. Not Mastered

Answer: A

Explanation:

Box 1: Dynamics 365 Workflow notifications

You can configure the system to send email messages to users when workflow-related events occur. Note:

- Go to Navigation pane > Modules > System administration > Users > Users.
- In the list, find and select the desired record.
- On the Action pane, click User options.
- Click the Workflow tab. Make sure that the Notifications section is expanded. In the Notifications section, you can specify how you want the user to be notified about workflow-related events.

Box 2: Dynamics 365 Field Service

Supply Chain Management enables synchronization of business processes between Dynamics 365 Supply Chain Management and Dynamics 365 Field Service. The integration scenarios are configured by using extensible Data integrator templates and Common Data Service to enable the synchronization of business processes. Standard templates can be used to create custom integration projects, where additional standard and custom fields and entities can be mapped to adjust the integration and meet specific business needs.

NEW QUESTION 34

A company uses Dynamics 365 Supply Chain Management.

The company wants to build customer user interfaces that add additional functionality. You need to recommend a solution for the company.

What should you recommend?

- A. Power BI
- B. Power Apps canvas apps
- C. AI Builder
- D. Microsoft Flow

Answer: B

Explanation:

Microsoft Power Apps provides a consistent experience for building apps and extending Office 365 and Dynamics 365. Investments include enhancements on Unified Interface, support for embedding canvas apps in model-driven apps and native support of the Common Data Service for Apps.

#### NEW QUESTION 37

A company uses Dynamics 365 Supply Chain Management.

When a sales order is created for one of the customers that a specific user manages, a Microsoft Outlook task must be created to remind the user to perform any follow up activities that are required.

You need to implement the functionality to create Outlook tasks.

Which two features should you use? Each correct answer presents part of the solution.

NOTE: Each correct selection is worth one point.

- A. AI Builder
- B. Power Apps
- C. Business Events
- D. Microsoft Flow
- E. Common Data Service

**Answer:** CD

#### Explanation:

Business events in Microsoft Power Automate

Business events can be consumed in Microsoft Power Automate via the application connector. The connector has a trigger that is named when a business event occurs. This trigger can be used to subscribe to any of the business events that are available in the target instance of the application.

#### NEW QUESTION 38

A recent update has been made to a canvas app. The update has caused a negative impact to users. You need to roll back the app to a previous version. What should you do?

- A. Restore the previous version of the app.
- B. Uninstall the app for all users and reinstall by using the previous versions' package.
- C. Deactivate the live app, import the previous version of the app, and then activate the app.
- D. Delete the app and create a new app based on the previous version.

**Answer:** A

#### Explanation:

Restore a canvas app to a previous version in PowerApps.

Restore an app from your account

- Open powerapps.com, and then click or tap Apps in the left navigation bar.
- Near the right edge, click or tap the info icon for the app that you want to restore.
- In the confirmation dialog box, click or tap Restore.

A new version is added to your list.

#### NEW QUESTION 40

You are new to working with Microsoft Flow. You create a flow that extracts birth dates for users and then sends a birthday greeting email to users on their birthday.

The flow does not properly extract birth dates. Where should you make changes?

- A. Connectors
- B. Expression
- C. Templates

**Answer:** A

#### Explanation:

Select the new Date Time connector. There you will see all of the actions, which help you to convert time zones to format them for local time in an email, add or subtract times, or just get the current time.

#### NEW QUESTION 41

A company plans to use Power Apps to connect to a series of custom services. There are no connectors available for the custom services.

For each of the following statements, select Yes if the statement is true. Otherwise, select No.

NOTE: Each correct selection is worth one point.

Statement	Yes	No
Custom connectors for customer-specific services do not require review and certification by Microsoft.	<input type="radio"/>	<input type="radio"/>
You can build a custom connector once and reuse the connector for Power Apps and Microsoft Flow.	<input type="radio"/>	<input type="radio"/>
You can make custom connectors publicly available for all Power Platform users without having Microsoft certify the connector.	<input type="radio"/>	<input type="radio"/>

- A. Mastered
- B. Not Mastered

**Answer:** A

**Explanation:**

Box 1: Yes

Only if you would like to share your connector with all users of Logic Apps, Microsoft Flow, and PowerApps, you can submit your connector for Microsoft certification. Microsoft will review your connector.

Box 2: Yes

Connectors created in Microsoft Flow are available in PowerApps. Likewise, connectors created in PowerApps are available in Microsoft Flow.

Box 3: No

If you would like to share your connector with all users of Logic Apps, Microsoft Flow, and PowerApps, you can submit your connector for Microsoft certification. Microsoft will review your connector.

**NEW QUESTION 42**

You have a Power BI report.

For each of the following statements, select Yes if the statement is true. Otherwise, select No. NOTE: Each correct selection is worth one point.

Statement	Yes	No
You can export data from a visualization in a Power BI report.	<input type="radio"/>	<input type="radio"/>
You can show the data behind a visual report on your screen without exporting the data.	<input type="radio"/>	<input type="radio"/>
You must export data to view supporting data for a KPI.	<input type="radio"/>	<input type="radio"/>

- A. Mastered
- B. Not Mastered

**Answer:** A

**Explanation:**

Box 1: Yes

If you'd like to see the data that Power BI uses to create a visualization, you can display that data in Power BI. You can also export that data to Excel as an .xlsx or .csv file. The option to export the data requires a Pro or Premium license and edit permissions to the dataset and report.

Note: Export data from a Power BI dashboard

- Choose the Export data icon.
- Power BI exports the data to a .csv file. If you've filtered the visualization, then the app will filter the downloaded data.
- Your browser will prompt you to save the file. Once saved, open the .csv file in Excel.

Box 2: No

Underlying data: Select this option if you want to see the data in the visual and additional data from the model (see chart below for details). If your visualization has an aggregate, selecting Underlying data removes the aggregate. When you select Export, Power BI exports the data to an .xlsx file and your browser prompts you to save the file. Once saved, open the file in Excel.

Box 3: Yes

A KPI dataset needs to contain goal values for a KPI. If your dataset doesn't contain goal values, you can create them by adding an Excel sheet with goals to your data model or PBIX file.

Note: A Key Performance Indicator (KPI) is a visual cue that communicates the amount of progress made toward a measurable goal.

NEW QUESTION 47

A company needs to create a series of mobile applications to empower their field engineers to accomplish several tasks with varying degrees of complexity. Match each option to its answer.  
Instructions: To answer, drag the appropriate app type from the column on the left to its definition on the right. Each app type may be used once, more than once, or not at all.  
NOTE: Each correct match is worth one point.

App types	Answer Area
	Definition
model-driven	
dashboard	Quickly create apps for very complex business processes with very little or no code.
dataset	Create simple apps with a highly customizable user interface layouts.
canvas	

App type

App type

App type

- A. Mastered
- B. Not Mastered

Answer: A

Explanation:

Box 1: canvas

Both model-driven and canvas apps allow you to easily build business apps. They both share access to the Common Data Service providing standard and custom entities. Canvas apps start with your user experience, crafting a highly tailored interface with the power of a blank canvas and connecting it to 200 data sources. Canvas apps can be built for web, mobile, and tablet applications. Model-driven apps start with your data model – building up from the shape of your core business data and processes in the Common Data Service to model forms, views, and other components. Model-driven apps automatically generate great UI that is responsive across devices.

Box 2: model-driven

NEW QUESTION 49

.....

## Thank You for Trying Our Product

### We offer two products:

1st - We have Practice Tests Software with Actual Exam Questions

2nd - Questons and Answers in PDF Format

### PL-900 Practice Exam Features:

- \* PL-900 Questions and Answers Updated Frequently
- \* PL-900 Practice Questions Verified by Expert Senior Certified Staff
- \* PL-900 Most Realistic Questions that Guarantee you a Pass on Your FirstTry
- \* PL-900 Practice Test Questions in Multiple Choice Formats and Updatesfor 1 Year

**100% Actual & Verified — Instant Download, Please Click**  
**[Order The PL-900 Practice Test Here](#)**