



Microsoft

Exam Questions mb-300

Microsoft Dynamics 365 Unified Operations Core

About ExamBible

[Your Partner of IT Exam](#)

Found in 1998

ExamBible is a company specialized on providing high quality IT exam practice study materials, especially Cisco CCNA, CCDA, CCNP, CCIE, Checkpoint CCSE, CompTIA A+, Network+ certification practice exams and so on. We guarantee that the candidates will not only pass any IT exam at the first attempt but also get profound understanding about the certificates they have got. There are so many alike companies in this industry, however, ExamBible has its unique advantages that other companies could not achieve.

Our Advances

* 99.9% Uptime

All examinations will be up to date.

* 24/7 Quality Support

We will provide service round the clock.

* 100% Pass Rate

Our guarantee that you will pass the exam.

* Unique Gurantee

If you do not pass the exam at the first time, we will not only arrange FULL REFUND for you, but also provide you another exam of your claim, ABSOLUTELY FREE!

NEW QUESTION 1

- (Exam Topic 1)

You need to configure the system for account representatives.

Which two actions should you perform? Each correct answer presents a partial solution.

NOTE: Each correct selection is worth one point.

- A. Recreate the job alert as a change-based alert.
- B. Enable change-based alerts.
- C. Increase the batch job running frequency.
- D. Specify the batch server for the alert notifications job.

Answer: AB

NEW QUESTION 2

- (Exam Topic 1)

You need to connect the Excel instance to the Relecloud production instance. What should you do?

- A. Set the server URL to Microsoft.Dynamics.Platform.Integration.Office.UrlViewerApplet.
- B. Set the server URL to <https://relecloud-prod.operations.dynamics.com>.
- C. Set the App Correlation ID to <https://relecloud-prod.operations.dynamics.com>.
- D. Set the App Correlation ID to the App Id in the Dynamics 365 Office App Parameters.

Answer: B

Explanation:

Reference:

<https://docs.microsoft.com/en-us/dynamics365/unified-operations/dev-itpro/office-integration/use-excel-add-in>

NEW QUESTION 3

- (Exam Topic 1)

You need to determine why the sales associate is not able to see Munson's in the search results. What is the cause of the issue?

- A. The search criteria is searching for only names that are exactly 'pickles'.
- B. The search criteria is only able to search by the shortened search name of the customer.
- C. The search criteria is searching for all customer names that start with 'pickles'.
- D. The search criteria is case sensitive.

Answer: C

Explanation:

Reference:

<https://docs.microsoft.com/en-us/dynamics365/customer-engagement/basics/search-records>

NEW QUESTION 4

- (Exam Topic 2)





You are a Dynamics 365 for Finance and Operations system administrator.

Users have been creating advanced queries for filter data on forms. They want to be able to save the filter data for later use and access those views when they log in.

You need to instruct them in how to do this.

Which four actions should end users perform in sequence? To answer, move the appropriate actions from the list of actions to the answer area and arrange them in the correct order.

Actions	Answer Area
Select the saved query.	
Click Save as filter.	
Click Configure.	
Filter the data in the grid via the advanced filter.	
Right-click and select Personalize this form.	
Click Options, and then select Add to workspace.	
Select the workspace and presentation.	
Add the All Customers form to favorites.	



- A. Mastered
- B. Not Mastered

Answer: A

Explanation:

Actions

Select the saved query.

Click Save as filter.

Click Configure.

Filter the data in the grid via the advanced filter.

Right-click and select Personalize this form.

Click Options, and then select Add to workspace.

Select the workspace and presentation.

Add the All Customers form to favorites.

Answer Area

Add the All Customers form to favorites.

Click Configure.

Select the saved query.

Click Options, and then select Add to workspace.

NEW QUESTION 5

- (Exam Topic 2)

You are the project owner in a Lifecycle Services (LCS) project to deploy a Dynamics 365 for Finance and Operations environment.

The system must be configured to enable testers to record processes that become business processes and test plans.

You need to configure the system to generate User Acceptance Testing (UAT) test plans.

In which order should you perform the actions? To answer, move all actions from the list of actions to the answer area and arrange them in the correct order.

Actions

Create business process libraries in the LCS project.

Enable Azure DevOps sync.

Configure Azure DevOps for the LCS project.

Configure system administrator help parameters to the LCS project.

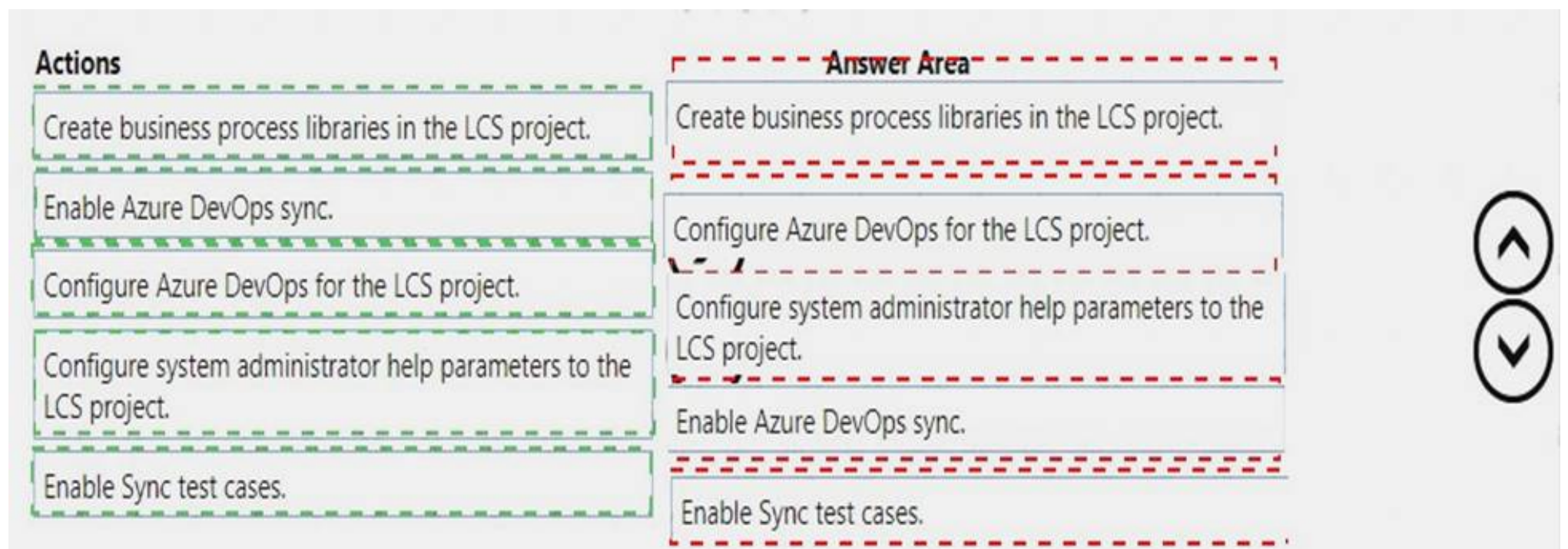
Enable Sync test cases.

Answer Area

- A. Mastered
- B. Not Mastered

Answer: A

Explanation:



NEW QUESTION 6

- (Exam Topic 2)

You are a Dynamics 365 for Finance and Operations system administrator.

Data is being migrated from a customized version of a legacy application to Dynamics 365 for Finance and Operations. Some of the fields in the entity are the same, and some are different.

As a starting point, you need to automatically map as many fields as possible within Dynamics 365 for Finance and Operations.

Which feature or tool should you use?

- A. Use the Mapping visualization tool
- B. Generate source mapping
- C. Use the Data task automation tool
- D. Copy configuration data
- E. Use Data templates

Answer: A

Explanation:

References:

<https://docs.microsoft.com/en-us/dynamics365/unified-operations/dev-itpro/data-entities/data-entities-data-pack>

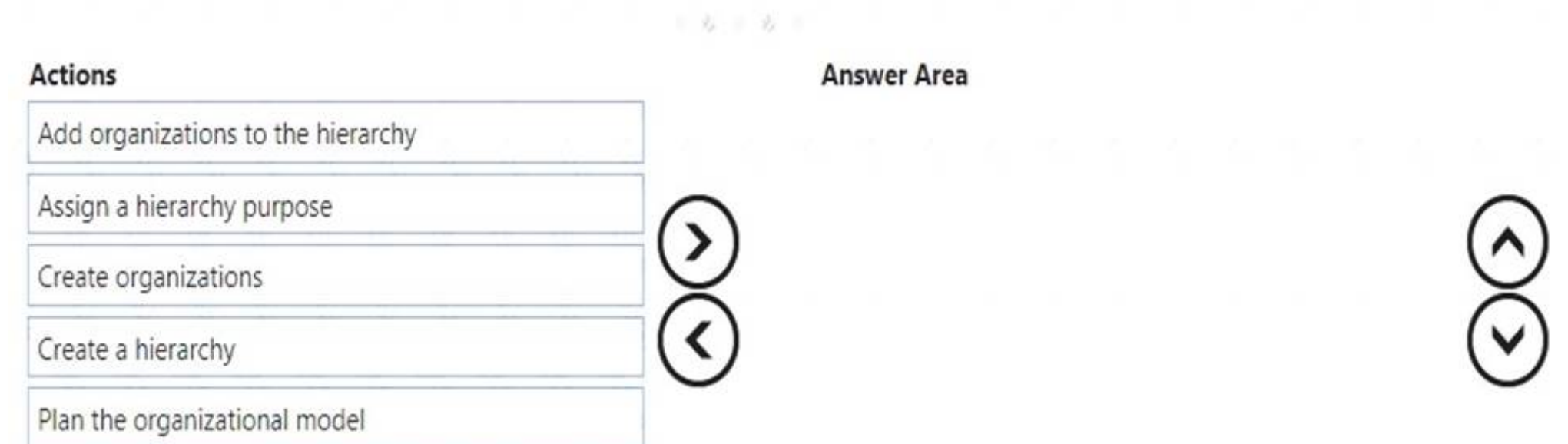
NEW QUESTION 7

- (Exam Topic 2)

A multinational company has many legal entities and a complex organizational structure.

The management of the company wants to set up an organizational hierarchy to help improve efficiency. You need to help create the organizational hierarchy.

In which order should you recommend that actions be performed to create an organizational hierarchy? To answer, move all actions from the list of actions to the answer area and arrange them in the correct order.



- A. Mastered
- B. Not Mastered

Answer: A

Explanation:

References:

<https://docs.microsoft.com/en-us/dynamics365/unified-operations/fin-and-ops/organization-administration/tasks>

NEW QUESTION 8

- (Exam Topic 2)

You are tasked with enhancing usability in the Dynamics 365 for Finance and Operations deployment for your organization. Your organization is evaluating different approaches, including using workspaces. You need to identify the goals of using workspaces. Which goals should you identify? To answer, select the appropriate options in the answer area. NOTE: Each correct selection is worth one point.

Answer Area

Requirement	Functional use
Visibility	Understand the current state of the light task activity to support informed decisions Display deep information supporting complex task execution
Workspace definition	An initial overview for a specific role to increase productivity A view of complex activities requiring interaction across different roles

- A. Mastered
- B. Not Mastered

Answer: A

Explanation:

Answer Area

Requirement	Functional use
Visibility	Understand the current state of the light task activity to support informed decisions Display deep information supporting complex task execution
Workspace definition	An initial overview for a specific role to increase productivity A view of complex activities requiring interaction across different roles

NEW QUESTION 9

- (Exam Topic 2)

Note: This question is part of a series of questions that present the same scenario. Each question in the series contains a unique solution that might meet the stated goals. Some question sets might have more than one correct solution, while others might not have a correct solution.

After you answer a question in this section, you will NOT be able to return to it. As a result, these questions will not appear in the review screen.

You are a Dynamics 365 for Finance and Operations security administrator.

When testing security setups, users report that certain roles are gaining access to sensitive information via a form in the system.

You must investigate which user roles have what visibility and access level to system objects, and then send a report to the implementation team to address security compliance concerns.

You need to report the information from the system. Solution: Generate the Security role access report. Does the solution meet the goal?

- A. Yes
- B. No

Answer: A

NEW QUESTION 10

- (Exam Topic 2)

You are a Dynamics 365 for Finance and Operations system administrator. You have production and testing environments. You move the workflow from the testing environment to the production environment.

The workflow in the production environment is stuck in a wait state.

You need to resolve the issue with the workflow in the production environment. What should you do?

- A. Set the workflow batch job to critical
- B. Set the workflow messaging batch job group
- C. Grant the user workflow permissions
- D. Set the workflow execution account in the workflow parameters

Answer: D

NEW QUESTION 10

- (Exam Topic 2)

Note: This question is part of a series of questions that present the same scenario. Each question in the series contains a unique solution that might meet the stated goals. Some question sets might have more than one correct solution, while others might not have a correct solution.

After you answer a question in this section, you will NOT be able to return to it. As a result, these questions will not appear in the review screen.

You are a Dynamics 365 for Finance and Operations system administrator. You have a test environment that is used by several people at any given time.

You create a new data entity in your development and migrate the code to the test environment. In the test environment, you are unable to find the data entity in the list.

You need to locate the data entity.

Solution: Restart the Application Object Server (AOS) of the test environment. Does the solution meet the goal?

- A. Yes
- B. No

Answer: B

NEW QUESTION 15

- (Exam Topic 2)

You develop a new purchasing solution for a Dynamics 365 for Finance and Operations environment. You must provide functional test passes for the purchasing solution.

You need to plan a production environment test flow for the purchasing solution. What three steps should you verify in the functional passes of the purchasing solution?

- A. Purchase orders are generated
- B. Item requirements are present
- C. Production order processing occurs
- D. Production orders are generated
- E. The item master is designed and released to a legal entity

Answer: ABE

NEW QUESTION 20

- (Exam Topic 2)

A company plans to use record templates in its implementation. You need to set up and use record templates.

Which three actions should you perform in sequence to create the record templates? To answer, move the appropriate actions from the list of actions to the answer area and arrange them in the correct order.

Actions

Use the Record info feature

Create a user template

Create a company accounts template

Change the Record view property

Identify the templatized record

Answer Area

- A. Mastered
- B. Not Mastered

Answer: A

Explanation:

References:

<https://docs.microsoft.com/en-us/dynamics365/unified-operations/dev-itpro/data-entities/tasks/create-record-tem>

NEW QUESTION 24

- (Exam Topic 2)

You plan the migration from a Dynamics AX 2012 to a Dynamics 365 for Finance and Operations environment.

You are tasked with overseeing and planning a cutover to guarantee a smooth experience for end users during the cutover. You perform a basic data upgrade validation.

You need to perform a cutover.

Which three tasks must you perform? Each correct answer presents part of the solution. NOTE: Each correct selection is worth one point.

- A. Perform a smoke test.
- B. Copy the upgraded database from the sandbox environment into the production environment.
- C. Complete application setup tasks.
- D. Ensure that Synchronous transfer mode is enabled
- E. Enable the Microsoft Power BI AppSource content packs for Cost management, Financial performance, and Retail channel performance.

Answer: BCE

NEW QUESTION 29

- (Exam Topic 2)

Note: This question is part of a series of questions that present the same scenario. Each question in the series contains a unique solution that might meet the stated goals. Some question sets might have more than one correct solution, while others might not have a correct solution.

After you answer a question in this section, you will NOT be able to return to it. As a result, these questions will not appear in the review screen.
You are a functional consultant who is deploying Dynamics 365 for Finance and Operations. The implementation must:

- ☐ Use an iterative approach
- ☐ Integrate with real-world data
- ☐ Enforce standards and governance
- ☐ Implement multiple rounds of feedback

You need to deploy and validate the implementation.

Solution: Use the XPPBP tool to export customizations and scenarios from a development sandbox. Make changes to the sandbox containing users. Deploy from the sandbox to the production environment.

Does the solution meet the goal?

- A. Yes
- B. No

Answer: B

NEW QUESTION 33

- (Exam Topic 2)

You are a Dynamics 365 for Finance and Operations systems administrator.

Your company needs to document and test all possible scenarios for a given implementation. Implementation gaps need to be documented using the tool available for tracking and linking to delivered extensions.

You need to identify the correct tool to accomplish this. What should you use?

- A. APQC Unified Libraries
- B. Shared asset library
- C. Business process modeler (BPM)
- D. Microsoft Azure DevOps

Answer: C

NEW QUESTION 38

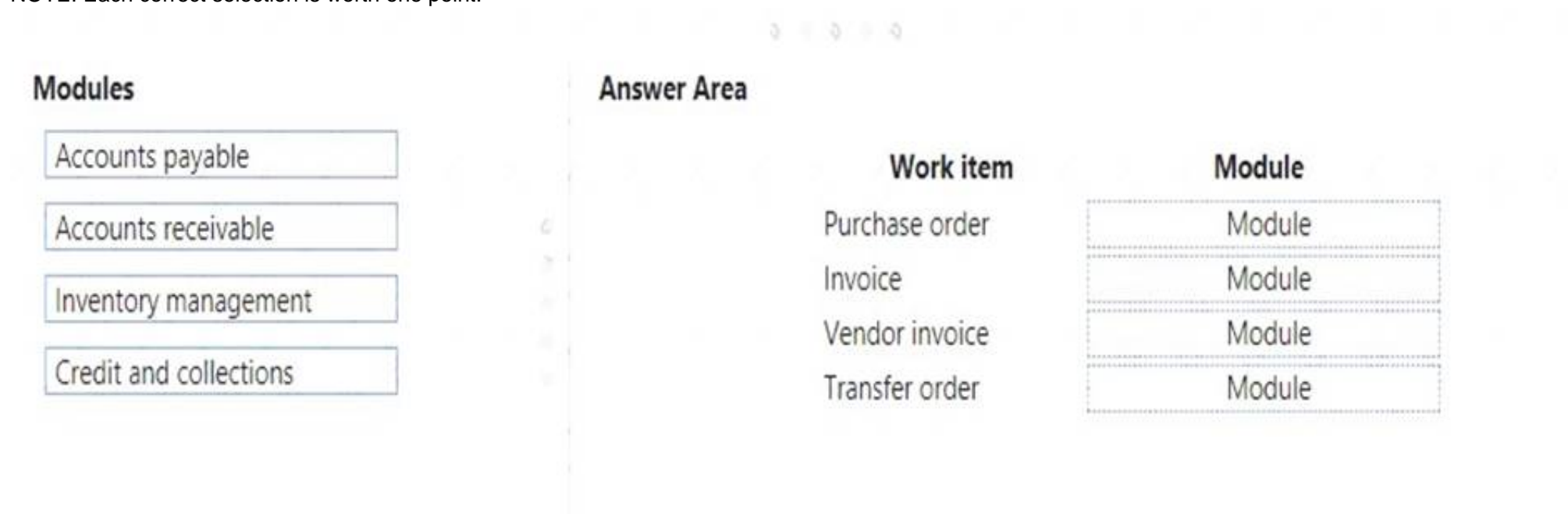
- (Exam Topic 2)

An organization implements Dynamics 365 for Finance and Operations.

You need to determine where work items originate.

From which module do the following work items originate? To answer, drag the appropriate modules to the correct work items. Each module may be used once, more than once, or not at all. You may need to drag the split bar between panes or scroll to view content.

NOTE: Each correct selection is worth one point.



Work item	Module
Purchase order	Module
Invoice	Module
Vendor invoice	Module
Transfer order	Module

- A. Mastered
- B. Not Mastered

Answer: A

Explanation:

Modules

- Accounts payable
- Accounts receivable
- Inventory management
- Credit and collections

Answer Area

Work item

- Purchase order
- Invoice
- Vendor invoice
- Transfer order

Module

- Accounts payable
- Accounts receivable
- Accounts payable
- Inventory management

NEW QUESTION 43

- (Exam Topic 2)

You are a Dynamics 365 for Finance and Operations system administrator.

The expense department relies heavily on properly operating workflows. If there is a failure in the workflow, the issue needs to get resolved quickly.

You need to make sure that the system actively tracks the status, so the support team can monitor and take actions against any failures.

What should you do? Each correct answer presents a complete solution.

NOTE: Each correct selection is worth one point.

- A. Set the monitoring category of the Workflow message processing batch job to Workflow.
- B. Set the critical job flag of the Workflow message processing batch job to True.
- C. Set the Ignore task failure flag of the Workflow message processing batch job to False.
- D. Set the batch job named Workflow message processing to send an email when the status of the batch job is Error.
- E. Set the priority field of the Workflow message processing batch job to 1.

Answer: BCD

NEW QUESTION 44

- (Exam Topic 2)

A company implements Dynamics 365 for Finance and Operations. It sets up and configures the system to support reporting requirements using Microsoft Power BI.

The customer service manager wants to create reports in Power BI for analyzing customer order patterns, order fulfillment metrics, customer satisfaction KPIs, and customer service representative goal metrics. These reports compare aggregated information across multiple demographic regions and business lines for current trends against historic information.

The manager would like to use the reports to make individual team performance more visible to the managerial and executive teams. Since reports will be used by those teams as well as mobile users, the manager would like the report response to reflect the latest data without requiring the user to wait.

You need to determine which tool or functionality best fits the scenario.

Which feature or functionality should you use? To answer, select the appropriate feature or functionality in the dialog box in the answer area.

NOTE: Each correct selection is worth one point

Answer Area

Scenario

Stage the aggregate data for use by the reports.

Set the data source to use DirectQuery.

Publish the new reports to the production environment.

Configure the data refresh rate for periodic updating.

Feature or functionality

Dynamics 365 system administration settings
 Power BI desktop client
 Lifecycle Services

Dynamics 365 system administration settings
 Power BI desktop client
 Lifecycle Services

Dynamics 365 system administration settings
 Power BI desktop client
 Lifecycle Services

Dynamics 365 system administration settings
 Power BI desktop client
 Lifecycle Services

- A. Mastered
- B. Not Mastered

Answer: A

Explanation:

Answer Area

Scenario	Feature or functionality
Stage the aggregate data for use by the reports.	Dynamics 365 system administration settings Power BI desktop client Lifecycle Services
Set the data source to use DirectQuery.	Dynamics 365 system administration settings Power BI desktop client Lifecycle Services
Publish the new reports to the production environment.	Dynamics 365 system administration settings Power BI desktop client Lifecycle Services
Configure the data refresh rate for periodic updating.	Dynamics 365 system administration settings Power BI desktop client Lifecycle Services

NEW QUESTION 45

- (Exam Topic 2)
You are a Dynamics 365 for Finance and Operations system administrator for a new implementation. You have a solution that needs to be tested using User Acceptance Testing (UAT). You have created a Business process modeler (BPM) library. You need to validate and support the solution. Which three actions should you perform? Each answer presents part of the solution.

- A. Upload the saved recording to BPM.
- B. Create a new Business process library
- C. Export the task recording to Microsoft Word and upload it to BPM.
- D. Record test cases and save them to BPM.
- E. Create and save a new task recording.

Answer: ABD

NEW QUESTION 49

- (Exam Topic 2)
You are responsible for automation efforts in a Dynamics 365 for Finance and Operations environment. You are running into performance issues on a specific Application Object Server (AOS) that is over-used. You need to alter your batch processing of high-demand items to have affinity to a new AOS server. What batch processing component should you change?

- A. Batch task
- B. Batch group
- C. Batch periods
- D. Batch job

Answer: A

NEW QUESTION 50

- (Exam Topic 2)
You receive an error when importing data into the pilot instance. You need to troubleshoot the error. What should you do first?

Answer Area

You receive an error when importing data into the pilot instance. You need to troubleshoot the error. What should you do first?

Set the entity order to Customer parameters, Customer groups, Customers V3, Customer invoicing journal.
Set Default refresh type to Full push only.
Set Skip staging to Yes.
Set Generate data package to No.

Only a subset of customers is imported into the pilot instance. You make a correction to ensure that all customer data is imported. What should you do next?

Set the entity order to Customer parameters, Customer groups, Customers V3, Customer invoicing journal.
Set Default refresh type to Full push only.
Set Skip staging to Yes.
Set Generate data package to No.

- A. Mastered
- B. Not Mastered

Answer: A

Explanation:

Answer Area

You receive an error when importing data into the pilot instance. You need to troubleshoot the error. What should you do first?

Set the entity order to Customer parameters, Customer groups, Customers V3, Customer invoicing journal.
Set Default refresh type to Full push only.
Set Skip staging to Yes. ¹
Set Generate data package to No.

Only a subset of customers is imported into the pilot instance. You make a correction to ensure that all customer data is imported. What should you do next?

Set the entity order to Customer parameters, Customer groups, Customers V3, Customer invoicing journal.
Set Default refresh type to Full push only.
Set Skip staging to Yes.
Set Generate data package to No.

NEW QUESTION 54

- (Exam Topic 2)

Note: This question is part of a series of questions that present the same scenario. Each question in the series contains a unique solution that might meet the stated goals. Some question sets might have more than one correct solution, while others might not have a correct solution.

After you answer a question in this section, you will NOT be able to return to it. As a result, these questions will not appear in the review screen.

You are configuring a Dynamics 365 for Finance and Operations environment. You must set up Microsoft Excel data exports.

You need to verify that the solution will result in a successful export of data to Excel.

Solution: Use Workbook Designer to build an editable custom export of customer data that includes only postal code, city, and state.

Does the solution meet the goal?

- A. Yes
- B. No

Answer: A

NEW QUESTION 55

- (Exam Topic 2)

Note: This question is part of a series of questions that present the same scenario. Each question in the series contains a unique solution that might meet the stated goals. Some question sets might have more than one correct solution, while others might not have a correct solution.

After you answer a question in this section, you will NOT be able to return to it. As a result, these questions will not appear in the review screen.

You are a functional consultant who is deploying Dynamics 365 for Finance and Operations. The implementation must:

- ☒ Use an iterative approach

- ▶ Integrate with real-world data
- ▶ Enforce standards and governance
- ▶ Implement multiple rounds of feedback

You need to deploy and validate the implementation.

Solution: Perform a fit-gap analysis. Configure Dynamics 365 for Finance and Operations to address the functional gap. Deploy the configuration.

Does the solution meet the goal?

- A. Yes
- B. No

Answer: A

NEW QUESTION 57

- (Exam Topic 2)

You manage a Dynamics 365 for Finance and Operations environment. Users report slow queries, deadlocks, and crashes. You need identify which tool to use to troubleshoot. What should you use?

- A. System diagnostics
- B. Environment monitoring
- C. DirectQuery
- D. Microsoft Azure Active Directory Connect Health Agent

Answer: B

Explanation:

Reference:

<https://blogs.msdn.microsoft.com/axsa/2018/06/05/how-to-use-environment-monitoring-view-raw-logs/>

NEW QUESTION 60

- (Exam Topic 2)

You are working as a functional consultant in a new Dynamics 365 for Finance and Operations environment. Your organization conducts business within the United States, with offices in several states. The organization has legal entities defined for each state and must share common tables between entities.

Each legal entity has the following setup:

- ▶ Users
- ▶ Products
- ▶ Customers
- ▶ Tax authorities
- ▶ Payment terms
- ▶ Human Resources data
- ▶ Site-specific stock ordering

You need to consolidate reports used for financial-consolidation reporting in a new legal entity. What should you do?

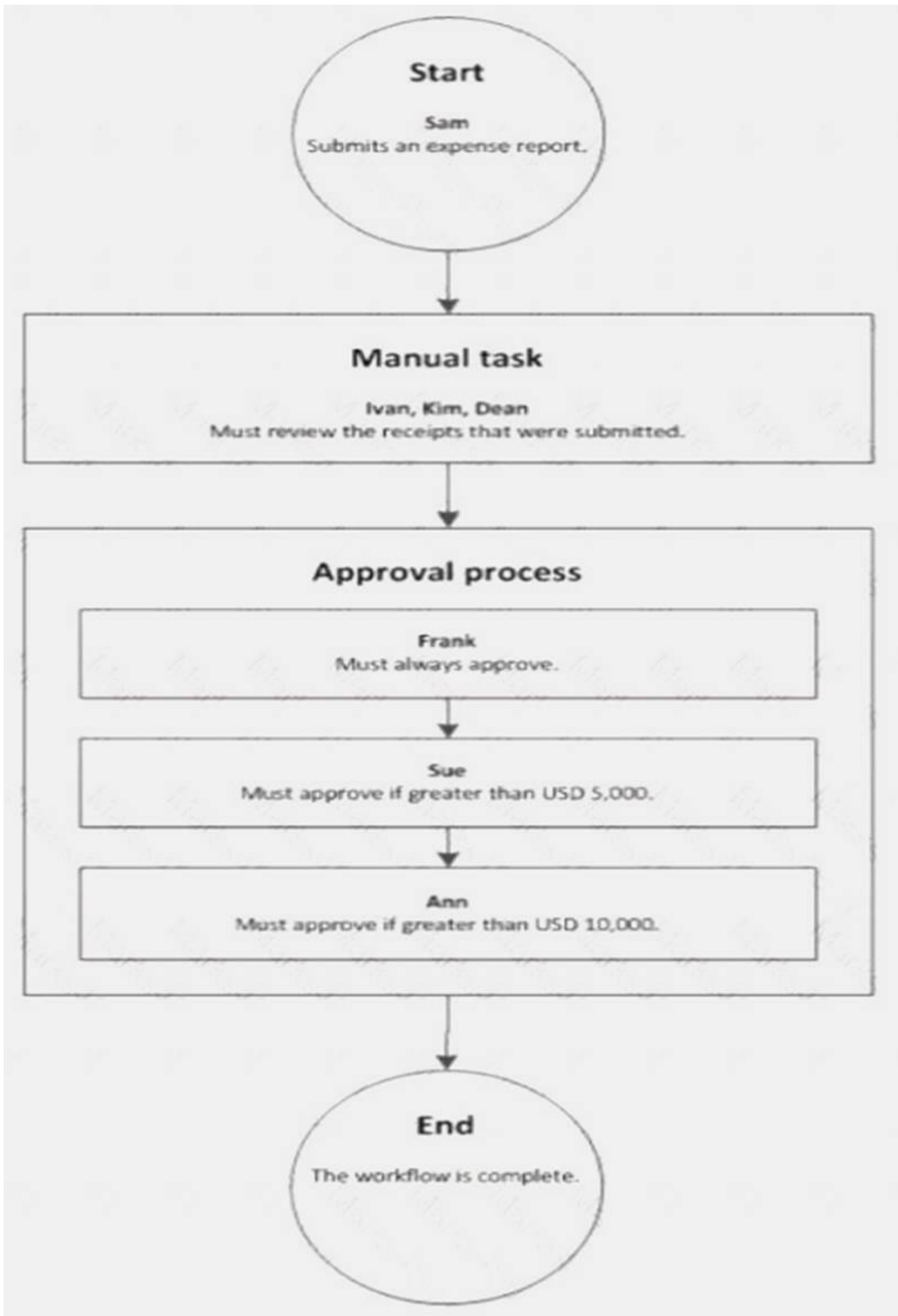
- A. Define the consolidation period
- B. Specify the range of product for consolidation
- C. Define Human Resources data
- D. Create users

Answer: A

NEW QUESTION 65

- (Exam Topic 2)

A company sets up a workflow for expense reports. An employee named Sam submits an expense report totaling USD 7,000 to go through the workflow.



Use the drop-down menus to select the answer choice that answers each question based on the information presented in the graphic.

NOTE: Each correct selection is worth one point.

Questions	Answer choice
What statement about the workflow is correct?	<div>Ann can reject the expense report.</div> <div>Ivan, Kim, and Dean must all complete the manual task.</div> <div>The workflow ends after Sue approves the expense report.</div> <div>The expense report will go through Frank, Sue, and Ann for approval.</div>
What type of workflow is this?	<div>Workflow with roles</div> <div>Workflow with a manual decision</div> <div>Workflow with multiple users in a task</div> <div>Workflow with a line-item workflow element</div>

- A. Mastered
B. Not Mastered

Answer: A

Explanation:

Reference:

<https://docs.microsoft.com/en-us/dynamicsax-2012/appuser-itpro/workflow-with-multiple-users-in-a-task>

NEW QUESTION 70

- (Exam Topic 2)

You are a Dynamics 365 for Finance and Operations system administrator.

A user is reporting an issue with the Sales Order form. The UI for the form is not loading properly, and there are some performance issues. The object was working fine until the most recent update release. The user has personalized this form, is using Microsoft Internet Explorer 11, and no other users are reporting issues. You need to resolve the issue. What should you do?

- A. Switch to Microsoft Edge instead of Internet Explorer 11.
B. Open the form in a new Microsoft Edge InPrivate session.
C. Delete the sales form object in the usage data form.
D. Disable and then re-enable the user.

Answer: A

NEW QUESTION 72

- (Exam Topic 2)

Your company acquires hundreds of partnerships after it purchases a separate company. The separate company stores the partnership records in a legacy system.

You export Partnership and PartnershipGroup files from the legacy system into Microsoft Word format. You create Partnership and PartnershipGroup entities.

You need to import the partnerships into Dynamics 365 for Finance and Operations.

Which four actions should you perform in order? To answer, move four actions from the list of actions to the answer area and arrange them in the correct order.

Actions	Answer Area
<div>Perform the data import.</div> <div>Convert the Word files to OData format. In the Dynamics 365 client Data management workspace, create a new data project.</div> <div>In SQL Server Management Studio, use the SQL Server Integration Services import wizard.</div> <div>In the Visual Studio Finance and Operations project, use the Data entity wizard.</div> <div>Convert the Word files to CSV format. In the Dynamics 365 client Data management workspace, create a new data project.</div> <div>For each file, select the entities and upload the files.</div> <div>Validate all entity data mapping.</div>	<div></div> <div></div> <div></div> <div></div> <div></div> <div></div> <div></div>

- A. Mastered
B. Not Mastered

Answer: A

Explanation:

Actions	Answer Area
Perform the data import.	Convert the Word files to CSV format. In the Dynamics 365 client Data management workspace, create a new data project.
Convert the Word files to OData format. In the Dynamics 365 client Data management workspace, create a new data project.	Perform the data import.
In SQL Server Management Studio, use the SQL Server Integration Services import wizard.	In SQL Server Management Studio, use the SQL Server Integration Services import wizard.
In the Visual Studio Finance and Operations project, use the Data entity wizard.	
Convert the Word files to CSV format. In the Dynamics 365 client Data management workspace, create a new data project.	Validate all entity data mapping.
For each file, select the entities and upload the files.	
Validate all entity data mapping.	

NEW QUESTION 77

- (Exam Topic 2)

Note: This question is part of a series of questions that present the same scenario. Each question in the series contains a unique solution that might meet the stated goals. Some question sets might have more than one correct solution, while others might not have a correct solution.

After you answer a question in this section, you will NOT be able to return to it. As a result, these questions will not appear in the review screen.

You are configuring a Dynamics 365 for Finance and Operations environment. You must set up Microsoft Excel data exports.

You need to verify that the solution will result in a successful export of data to Excel.

Solution: Use Open in Excel to open an entity form that does not share the same root data source by implementing the ExportToExcelGeneratedCustomExport interface.

Does the solution meet the goal?

- A. Yes
- B. No

Answer: B

NEW QUESTION 81

- (Exam Topic 2)

A company implements Dynamics 365 for Finance and Operations and sets up and configures the system to support its reporting requirements using Microsoft Power BI. A user creates a chart in her Power BI instance to display customer order patterns for the top 10 customers daily.

You need to configure the Power BI integration to pin the chart to the user's workspace in Dynamics 365 for Finance and Operations.

Which three actions should you perform? Each correct answer presents part of the solution. NOTE: Each correct selection is worth one point.

- A. In the Dynamics 365 for Finance and Operations client, authorize sign-in to Power BI.
- B. In Azure Active Directory, grant the customer services manager administrative permissions to the company's Azure Active Directory account to run the report.
- C. In Microsoft Azure Active Directory, add the PowerBI service to the app registration and grant the necessary delegated permissions.
- D. In the Entity store, configure the Application ID and Application key for PowerBI.
- E. In the Dynamics 365 for Finance and Operations System administration setup screen in PowerBI.com, configure the application ID and application key.

Answer: ACE

Explanation:

References:

<https://docs.microsoft.com/en-us/dynamics365/unified-operations/dev-itpro/analytics/configure-power-bi-integr>

NEW QUESTION 85

- (Exam Topic 2)

A company plans to create a global address book and additional address books for each line of business. You need to help add parties to the address books.

What party types can you use for both the global address book and the additional address books? NOTE: Each correct selection is worth one point.

- A. Customer

- B. Vendor
- C. Person
- D. Competitor
- E. Organization

Answer: ABD

Explanation:

<https://docs.microsoft.com/en-sg/dynamics365/unified-operations/fin-and-ops/organization-administration/overv>

NEW QUESTION 88

- (Exam Topic 2)

You set up Dynamics 365 for Finance and Operations. Your organization will use email with the application. You need to ensure that email will be sent using typical secure settings. What setting must be set as specified?

- A. In-place hold and Litigation hold are enabled.
- B. In-place eDiscovery is enabled,
- C. The SMTP port field is set to 587.
- D. Retention policies are enabled.

Answer: C

NEW QUESTION 90

- (Exam Topic 2)

A company is migrating to Dynamics 365 for Finance and Operations from a legacy system. The company is creating new questionnaires for customers. When the survey responses come in, the company wants to provide ratings as a foundation for a further discussion. You set up questionnaire types, question types, and questionnaire parameters. You need to design the questionnaire. In which order should you perform the actions? To answer, move all actions to the answer area and arrange them in the correct order.

Actions

Answer Area

Attach questions to the questionnaire
Set up the questionnaire
Set up questions and their association
Set up answer groups and answers



- A. Mastered
- B. Not Mastered

Answer: A

Explanation:

References:

<https://docs.microsoft.com/en-us/dynamics365/unified-operations/talent/design-questionnaires>

NEW QUESTION 92

- (Exam Topic 2)

You are a Dynamics 365 for Finance and Operations systems analyst. A user configures an alert for purchase orders that have a delivery date of two weeks away. However, batch alerts are not being sent. You need to troubleshoot why alerts are not processing. What two actions may be the cause for alerts not being sent? Each correct answer presents a complete solution. NOTE: Each correct selection is worth one point.

- A. The date format in the Dynamics 365 tenant does not match the format in the client device-CD
- B. A batch processing window may be set up for that batch job.
- C. The change-based alert has expired.
- D. There may not be a batch server assigned to the batch job.

Answer: CD

Explanation:

Reference:

<https://community.dynamics.com/ax/b/shafeealabadiaxtutorials/posts/ax-2012-alert-management-part-ii-due-dat>

NEW QUESTION 97

- (Exam Topic 2)

Note: This question is part of a series of questions that present the same scenario. Each question in the series contains a unique solution that might meet the stated goals. Some question sets might have more than one correct solution, while others might not have a correct solution.
After you answer a question in this section, you will NOT be able to return to it. As a result, these questions will not appear in the review screen.
You are a Dynamics 365 for Finance and Operations system administrator. You have a test environment that is used by several people at any given time. You create a new data entity in your development and migrate the code to the test environment. In the test environment, you are unable to find the data entity in the list.
You need to locate the data entity.
Solution: In the Data management framework parameter screen, refresh the Entity list. Does the solution meet the goal?

- A. Yes
- B. No

Answer: A

NEW QUESTION 101

- (Exam Topic 2)

You are a systems administrator at a company that has implemented Dynamics 365 for Finance and Operations. New employees are starting at the company. You need to extend the electronic signatures functionality to them. Which two actions should you perform? Each answer presents part of the solution.
NOTE: Each correct selection is worth one point.

- A. On the Email parameters page, specify that SSL is required
- B. Specify the user's email address
- C. In License configuration, enable Maintenance mode
- D. Select the Electronic signature check box

Answer: CD

Explanation:

Reference:

<https://docs.microsoft.com/en-us/dynamics365/unified-operations/fin-and-ops/organization-administration/tasks>

NEW QUESTION 105

- (Exam Topic 2)

A company needs to set up its printers to work with Dynamics 365 for Finance and Operations. You need to set up the printers for network printing from the Dynamics 365 client browser. Which three actions should be performed in order? To answer, move all actions from the list of actions to the answer area and arrange them in the correct order.

Actions

Activate the network printers

Install and configure a document routing agent

Set up the network printer and assign a static IP

Register network printers in Finance and Operations



Answer Area

- A. Mastered
- B. Not Mastered

Answer: A

Explanation:

References:

<https://docs.microsoft.com/en-us/dynamics365/unified-operations/dev-itpro/analytics/install-document-routing-a>

NEW QUESTION 109

- (Exam Topic 2)

You are a Dynamics 365 for Finance and Operations system administrator for your company. The company sets up a new legal entity and wants to update the main page of the entity with a large banner containing the company logo. You need to configure the new legal entity to display this. Which four actions should you perform in sequence? To answer, move the appropriate actions from the list of actions to the answer area and arrange them in the correct order.

Actions

Answer Area

- Change the Dashboard company image type to Banner
- Verify that the Dashboard company image type is set to Default
- Select the new image
- Use the Legal entities form
- Use the Parameters form in the Organizational administration module
- Edit the form



- A. Mastered
B. Not Mastered

Answer: A

Explanation:

References:
<https://docs.microsoft.com/en-us/dynamics365/unified-operations/fin-and-ops/get-started/tasks/change-banner-o>

NEW QUESTION 113

- (Exam Topic 2)
You manage a Dynamics 365 for Finance and Operations environment.
In preparation for being migrated into a new environment, data packages are being numbered in alignment with the default numbering formats in Lifecycle Services. A package is named 03.01.002.
You need to identify what this package contains. To answer, select the appropriate option in the answer area. NOTE: Each correct selection is worth one point.

Segment	Component
03	<div>The environment The module The data type The month</div>
01	<div>The module The month The sequence number The data type</div>
002	<div>The sequence number The data package version The data entity The data type reference</div>

- A. Mastered
B. Not Mastered

Answer: A

Explanation:

Segment	Component
03	<div>The environment The module The data type The month</div>
01	<div>The module The month The sequence number The data type</div>
002	<div>The sequence number The data package version The data entity The data type reference</div>

NEW QUESTION 114

- (Exam Topic 2)
Note: This question is part of a series of questions that present the same scenario. Each question in the series contains a unique solution that might meet the stated goals. Some question sets might have more than one correct solution, while others might not have a correct solution.
After you answer a question in this section, you will NOT be able to return to it. As a result, these questions will not appear in the review screen.
You are developing a file-based integration to Dynamics 365 for Finance and Operations.
Microsoft Excel files with 15,000 or more records need to be imported into the system periodically by individual users. The records need to be imported in full within

a 5-minute approved window.

You need to determine how to accomplish the import into the system. Solution: Import the data by using the Excel Add-in.

Does the solution meet the goal?

- A. Yes
- B. No

Answer: A

NEW QUESTION 117

- (Exam Topic 2)

A system administrator has limited security rights in a Dynamics 365 for Finance and Operations environment that has multiple legal entities. You have a service-level agreement (SLA) of 30 minutes for support requests.

The organizational administrator set up the printers for the organization.

A printer fails. The system administrator deletes the printer instance. Sensitive print jobs remain in the printer queue and must be purged. Existing permissions do not allow the system administrator to purge the print queue because the printer is attached to multiple legal entities.

You need to purge the documents from the print queue.

What should you do?

- A. Wait for the organizational administrator to return to purge the documents._
- B. Use the system administration utility to purge the documents.
- C. Use an account with administrative permissions on the network printer to purge the queue.
- D. Contact Microsoft technical support-

Answer: C

NEW QUESTION 119

- (Exam Topic 2)

You are a Dynamics 365 for Finance and Operations system administrator.

A user is reporting an issue with the Sales Order form. The UI for the form is not loading properly, and there are some performance issues. The object was working fine until the most recent update release. The user has personalized this form, is using Microsoft Internet Explorer 11, and no other users are reporting issues.

You need to resolve the issue. What should you do?

- A. Export, delete, then reimport the usage data for the sales form object.
- B. Disable and then re-enable the user.
- C. Reset all the usage data for the user.
- D. Reimport and compile the AOT object causing issues.

Answer: C

NEW QUESTION 122

- (Exam Topic 2)

A company plans to set up an organizational hierarchy to manage organizational relationships. You need to identify which organizational purpose to use. What purpose can you assign to an organizational hierarchy?

- A. Centralized payments
- B. Financial reason code
- C. Cost center
- D. Price models

Answer: A

Explanation:

Reference:

<https://docs.microsoft.com/en-us/dynamics365/unified-operations/financials/cash-bank-management/set-up-cent>

NEW QUESTION 125

- (Exam Topic 2)

You are a Dynamics 365 for Finance and Operations developer.

New features for Dynamics 365 for Finance and Operations have been released. Your company plans to upgrade their Dynamics 365 instance soon.

You need to download a virtual machine that includes all of the new features so that you can explore the new features.

Where should you go?

- A. Microsoft Connect
- B. Shared Asset library
- C. Environments
- D. My subscription
- E. Microsoft Developer Network

Answer: C

NEW QUESTION 126

- (Exam Topic 2)

Note: This question is part of a series of questions that present the same scenario. Each question in the series contains a unique solution that might meet the stated goals. Some question sets might have more than one correct solution, while others might not have a correct solution.

After you answer a question in this section, you will NOT be able to return to it. As a result, these questions will not appear in the review screen.

You are developing a file-based integration to Dynamics 365 for Finance and Operations.

Microsoft Excel files with 15,000 or more records need to be imported into the system periodically by individual users. The records need to be imported in full within

a 5-minute approved window.

You need to determine how to accomplish the import into the system. Solution: Import the data by using the recurring data integrations API. Does the solution meet the goal?

- A. Yes
- B. No

Answer: B

NEW QUESTION 128

.....

Relate Links

100% Pass Your mb-300 Exam with Examible Prep Materials

<https://www.exambible.com/mb-300-exam/>

Contact us

We are proud of our high-quality customer service, which serves you around the clock 24/7.

Viste - <https://www.exambible.com/>