



Microsoft

Exam Questions mb-300

Microsoft Dynamics 365 Unified Operations Core

About ExamBible

[Your Partner of IT Exam](#)

Found in 1998

ExamBible is a company specialized on providing high quality IT exam practice study materials, especially Cisco CCNA, CCDA, CCNP, CCIE, Checkpoint CCSE, CompTIA A+, Network+ certification practice exams and so on. We guarantee that the candidates will not only pass any IT exam at the first attempt but also get profound understanding about the certificates they have got. There are so many alike companies in this industry, however, ExamBible has its unique advantages that other companies could not achieve.

Our Advances

* 99.9% Uptime

All examinations will be up to date.

* 24/7 Quality Support

We will provide service round the clock.

* 100% Pass Rate

Our guarantee that you will pass the exam.

* Unique Gurantee

If you do not pass the exam at the first time, we will not only arrange FULL REFUND for you, but also provide you another exam of your claim, ABSOLUTELY FREE!

NEW QUESTION 1

- (Exam Topic 1)

You need to determine why the sales associate is not able to see Munson's in the search results. What is the cause of the issue?

- A. The search criteria is searching for only names that are exactly 'pickles'.
- B. The search criteria is only able to search by the shortened search name of the customer.
- C. The search criteria is searching for all customer names that start with 'pickles'.
- D. The search criteria is case sensitive.

Answer: C

Explanation:

Reference:

<https://docs.microsoft.com/en-us/dynamics365/customer-engagement/basics/search-records>

NEW QUESTION 2

- (Exam Topic 2)

You are a Dynamics 365 for Finance and Operations system administrator.

Data is being migrated from a customized version of a legacy application to Dynamics 365 for Finance and Operations. Some of the fields in the entity are the same, and some are different.

As a starting point, you need to automatically map as many fields as possible within Dynamics 365 for Finance and Operations.

Which feature or tool should you use?

- A. Use the Mapping visualization tool
- B. Generate source mapping
- C. Use the Data task automation tool
- D. Copy configuration data
- E. Use Data templates

Answer: A

Explanation:

References:

<https://docs.microsoft.com/en-us/dynamics365/unified-operations/dev-itpro/data-entities/data-entities-data-pack>

NEW QUESTION 3

- (Exam Topic 2)

Note: This question is part of a series of questions that present the same scenario. Each question in the series contains a unique solution that might meet the stated goals. Some question sets might have more than one correct solution, while others might not have a correct solution.

After you answer a question in this section, you will NOT be able to return to it. As a result, these questions will not appear in the review screen.

You are a Dynamics 365 for Finance and Operations security administrator.

When testing security setups, users report that certain roles are gaining access to sensitive information via a form in the system.

You must investigate which user roles have what visibility and access level to system objects, and then send a report to the implementation team to address security compliance concerns.

You need to report the information from the system. Solution: Generate the Security role access report. Does the solution meet the goal?

- A. Yes
- B. No

Answer: A

NEW QUESTION 4

- (Exam Topic 2)

Note: This question is part of a series of questions that present the same scenario. Each question in the series contains a unique solution that might meet the stated goals. Some question sets might have more than one correct solution, while others might not have a correct solution.

After you answer a question in this section, you will NOT be able to return to it. As a result, these questions will not appear in the review screen.

You are a Dynamics 365 for Finance and Operations system administrator. You have a test environment that is used by several people at any given time.

You create a new data entity in your development and migrate the code to the test environment. In the test environment, you are unable to find the data entity in the list.

You need to locate the data entity.

Solution: Restart the Application Object Server (AOS) of the test environment. Does the solution meet the goal?

- A. Yes
- B. No

Answer: B

NEW QUESTION 5

- (Exam Topic 2)

A company plans to use Dynamics 365 for Finance and Operations. You need to implement the security architecture.

Which component should you use for each requirement? To answer, select the appropriate security component in the answer area.

NOTE: Each correct selection is worth one point.

Answer Area

Requirement	Security component
Group the security configuration for employees with the same job function.	<div>Security roles</div> <div>Duties</div> <div>Privileges</div> <div>Permissions</div>
Assign check-depositing tasks to a group of people as part of the accounts receivable process.	<div>Security roles</div> <div>Duties</div> <div>Privileges</div> <div>Permissions</div>
Restrict access to a specific table or chart.	<div>Security roles</div> <div>Duties</div> <div>Privileges</div> <div>Permissions</div>

- A. Mastered
B. Not Mastered

Answer: A

Explanation:**Answer Area**

Requirement	Security component
Group the security configuration for employees with the same job function.	<div>Security roles</div> <div>Duties</div> <div>Privileges</div> <div>Permissions</div>
Assign check-depositing tasks to a group of people as part of the accounts receivable process.	<div>Security roles</div> <div>Duties</div> <div>Privileges</div> <div>Permissions</div>
Restrict access to a specific table or chart.	<div>Security roles</div> <div>Duties</div> <div>Privileges</div> <div>Permissions</div>

NEW QUESTION 6

- (Exam Topic 2)

You develop a new purchasing solution for a Dynamics 365 for Finance and Operations environment. You must provide functional test passes for the purchasing solution.

You need to plan a production environment test flow for the purchasing solution. What three steps should you verify in the functional passes of the purchasing solution?

- A. Purchase orders are generated
B. Item requirements are present
C. Production order processing occurs
D. Production orders are generated
E. The item master is designed and released to a legal entity

Answer: ABE

NEW QUESTION 7

- (Exam Topic 2)

You plan the migration from a Dynamics AX 2012 to a Dynamics 365 for Finance and Operations environment.

You are tasked with overseeing and planning a cutover to guarantee a smooth experience for end users during the cutover. You perform a basic data upgrade validation.

You need to perform a cutover.

Which three tasks must you perform? Each correct answer presents part of the solution. NOTE: Each correct selection is worth one point.

- A. Perform a smoke test.
B. Copy the upgraded database from the sandbox environment into the production environment.
C. Complete application setup tasks.
D. Ensure that Synchronous transfer mode is enabled
E. Enable the Microsoft Power BI AppSource content packs for Cost management, Financial performance, and Retail channel performance.

Answer: BCE

NEW QUESTION 8

- (Exam Topic 2)

You are responsible for regulatory compliance for a Dynamics 365 for Finance and Operations environment. You need to be able to search for the regulatory features of Dynamics 365 for Finance and Operations.

What should you use?

- A. Intelligent Data Management Framework (IDMF)
B. System diagnostics
C. Application Object Tree (AOT)
D. Issue search

Answer: D

Explanation:

References:

<https://docs.microsoft.com/en-us/dynamics365/unified-operations/dev-itpro/lifecycle-services/issue-search-lcs>

NEW QUESTION 9

- (Exam Topic 2)

You are a Dynamics 365 for Finance and Operations systems administrator.

Your company needs to document and test all possible scenarios for a given implementation. Implementation gaps need to be documented using the tool available for tracking and linking to delivered extensions.

You need to identify the correct tool to accomplish this. What should you use?

- A. APQC Unified Libraries
- B. Shared asset library
- C. Business process modeler (BPM)
- D. Microsoft Azure DevOps

Answer: C

NEW QUESTION 10

- (Exam Topic 2)

An organization implements Dynamics 365 for Finance and Operations.

You need to determine where work items originate.

From which module do the following work items originate? To answer, drag the appropriate modules to the correct work items. Each module may be used once, more than once, or not at all. You may need to drag the split bar between panes or scroll to view content.

NOTE: Each correct selection is worth one point.

Modules

Accounts payable

Accounts receivable

Inventory management

Credit and collections

Answer Area

Work item

Purchase order

Invoice

Vendor invoice

Transfer order

Module

Module

Module

Module

- A. Mastered
- B. Not Mastered

Answer: A

Explanation:

Modules

Accounts payable

Accounts receivable

Inventory management

Credit and collections

Answer Area

Work item

Purchase order

Invoice

Vendor invoice

Transfer order

Module

Accounts payable

Accounts receivable

Accounts payable

Inventory management

NEW QUESTION 10

- (Exam Topic 2)

You are a Dynamics 365 for Finance and Operations system administrator.

The expense department relies heavily on properly operating workflows. If there is a failure in the workflow, the issue needs to get resolved quickly.

You need to make sure that the system actively tracks the status, so the support team can monitor and take actions against any failures.

What should you do? Each correct answer presents a complete solution.

NOTE: Each correct selection is worth one point.

- A. Set the monitoring category of the Workflow message processing batch job to Workflow.
- B. Set the critical job flag of the Workflow message processing batch job to True.
- C. Set the Ignore task failure flag of the Workflow message processing batch job to False.

- D. Set the batch job named Workflow message processing to send an email when the status of the batch job is Error.
E. Set the priority field of the Workflow message processing batch job to 1.

Answer: BCD

NEW QUESTION 11

- (Exam Topic 2)

A company implements Dynamics 365 for Finance and Operations. It sets up and configures the system to support reporting requirements using Microsoft Power BI.

The customer service manager wants to create reports in Power BI for analyzing customer order patterns, order fulfillment metrics, customer satisfaction KPIs, and customer service representative goal metrics. These reports compare aggregated information across multiple demographic regions and business lines for current trends against historic information.

The manager would like to use the reports to make individual team performance more visible to the managerial and executive teams. Since reports will be used by those teams as well as mobile users, the manager would like the report response to reflect the latest data without requiring the user to wait.

You need to determine which tool or functionality best fits the scenario.

Which feature or functionality should you use? To answer, select the appropriate feature or functionality in the dialog box in the answer area.

NOTE: Each correct selection is worth one point

Answer Area

Scenario	Feature or functionality
Stage the aggregate data for use by the reports.	Dynamics 365 system administration settings Power BI desktop client Lifecycle Services
Set the data source to use DirectQuery.	Dynamics 365 system administration settings Power BI desktop client Lifecycle Services
Publish the new reports to the production environment.	Dynamics 365 system administration settings Power BI desktop client Lifecycle Services
Configure the data refresh rate for periodic updating.	Dynamics 365 system administration settings Power BI desktop client Lifecycle Services

- A. Mastered
B. Not Mastered

Answer: A

Explanation:

Answer Area

Scenario	Feature or functionality
Stage the aggregate data for use by the reports.	Dynamics 365 system administration settings Power BI desktop client Lifecycle Services
Set the data source to use DirectQuery.	Dynamics 365 system administration settings Power BI desktop client Lifecycle Services
Publish the new reports to the production environment.	Dynamics 365 system administration settings Power BI desktop client Lifecycle Services
Configure the data refresh rate for periodic updating.	Dynamics 365 system administration settings Power BI desktop client Lifecycle Services

NEW QUESTION 16

- (Exam Topic 2)

During the implementation planning process, a company decides to migrate various functional data from its legacy systems. These include accounting data, sales data, and purchasing data.

Some functional data elements reference data stored in other tables.
You need to ensure that data types and data elements are imported in the correct order.
In what order should you perform the data migration? To answer, select the appropriate configuration in the answer area.
NOTE: Each correct selection is worth one point.

Answer Area

Sequential order	Order options
Data category	<div>Master, reference, transaction</div> <div>Reference, master, transaction</div> <div>Transaction, reference, master</div> <div>Transaction, master, reference</div>
Data entity	<div>Ledger journals, chart of accounts, account structures</div> <div>Chart of accounts, account structures, ledger journals</div> <div>Account structures, chart of accounts, ledger journals</div> <div>Ledger journals, account structures, chart of accounts</div>

- A. Mastered
- B. Not Mastered

Answer: A

Explanation:

Answer Area

Sequential order	Order options
Data category	<div>Master, reference, transaction</div> <div>Reference, master, transaction</div> <div>Transaction, reference, master</div> <div>Transaction, master, reference</div>
Data entity	<div>Ledger journals, chart of accounts, account structures</div> <div>Chart of accounts, account structures, ledger journals</div> <div>Account structures, chart of accounts, ledger journals</div> <div>Ledger journals, account structures, chart of accounts</div>

NEW QUESTION 21

- (Exam Topic 2)

You are a system administrator using Dynamics 365 for Finance and Operations. You are responsible for troubleshooting workflows.
You need to determine where workflows are failing based on error messages.
Which runtime is raising the error when the following activity and error occurs? To answer, select the appropriate runtime in the answer area.
NOTE: Each correct selection is worth one point.

Answer Area

Activity and error	Runtime
A user submits an expense report by clicking the Submit button on one of the workflow controls. An error occurs.	<div>Managed workflow runtime</div> <div>X++ workflow runtime</div>
.NET Interop from X++ receives the message and starts a new workflow instance via Windows Workflow Foundation. An error occurs.	<div>X++ workflow runtime</div> <div>Managed workflow runtime</div>
The messaging batch job reads the Workflow started message from the message queue and invokes the application event handler to process a workflow started event. An error occurs.	<div>Managed workflow runtime</div> <div>X++ workflow runtime</div>

- A. Mastered
- B. Not Mastered

Answer: A

Explanation:

References:

<https://docs.microsoft.com/en-us/dynamics365/unified-operations/fin-and-ops/organization-administration/work>

NEW QUESTION 24

- (Exam Topic 2)

You are a systems administrator for a Dynamics 365 for Finance and Operations environment.

You must notify the person responsible for deliveries that production could be delayed if deliveries are postponed.

You need to configure the alert.

What object should you configure the alert on?

- A. Inventory control
- B. Inventory location
- C. Purchase order
- D. Product

Answer: C

NEW QUESTION 26

- (Exam Topic 2)

You are a Dynamics 365 for Finance and Operations system administrator.

You manage a system that imports a large volume of sales orders from multiple systems daily. The system encounters a performance problem due to the amount of data.

You need to improve performance for the import. What should you do?

- A. Create an ODBC-type source data format and import directly from the database.
- B. Enable data import in recurrence.
- C. Configure entity execution parameters to make the data import multi-threaded.
- D. Enable change for the data entities.

Answer: C

NEW QUESTION 28

- (Exam Topic 2)

A company implements Dynamics 365 for Finance and Operations.

You are responsible for creating a custom feature within a solution by using Microsoft Azure DevOps. Testers have found a bug while running one of the User Acceptance Testing (UAT) scripts. However, it is not a high-severity bug and has been found to not have interconnected dependencies to other branches within the process flow.

You need to deploy the passed functionality features. What should you do?

- A. Exclude the specific package from the Business process modeler (BPM).
- B. Exclude the specific package from the data package in the Data management tool.
- C. Exclude the specific package from the deployable package in Microsoft Azure DevOps.
- D. Exclude the specific package from the deployable package in Configuration data manager.

Answer: C

NEW QUESTION 33

- (Exam Topic 2)

Note: This question is part of a series of questions that present the same scenario. Each question in the series contains a unique solution that might meet the stated goals. Some question sets might have more than one correct solution, while others might not have a correct solution.

After you answer a question in this section, you will NOT be able to return to it. As a result, these questions will not appear in the review screen.

You are configuring a Dynamics 365 for Finance and Operations environment. You must set up Microsoft Excel data exports.

You need to verify that the solution will result in a successful export of data to Excel.

Solution: Use Workbook Designer to build an editable custom export of customer data that includes only postal code, city, and state.

Does the solution meet the goal?

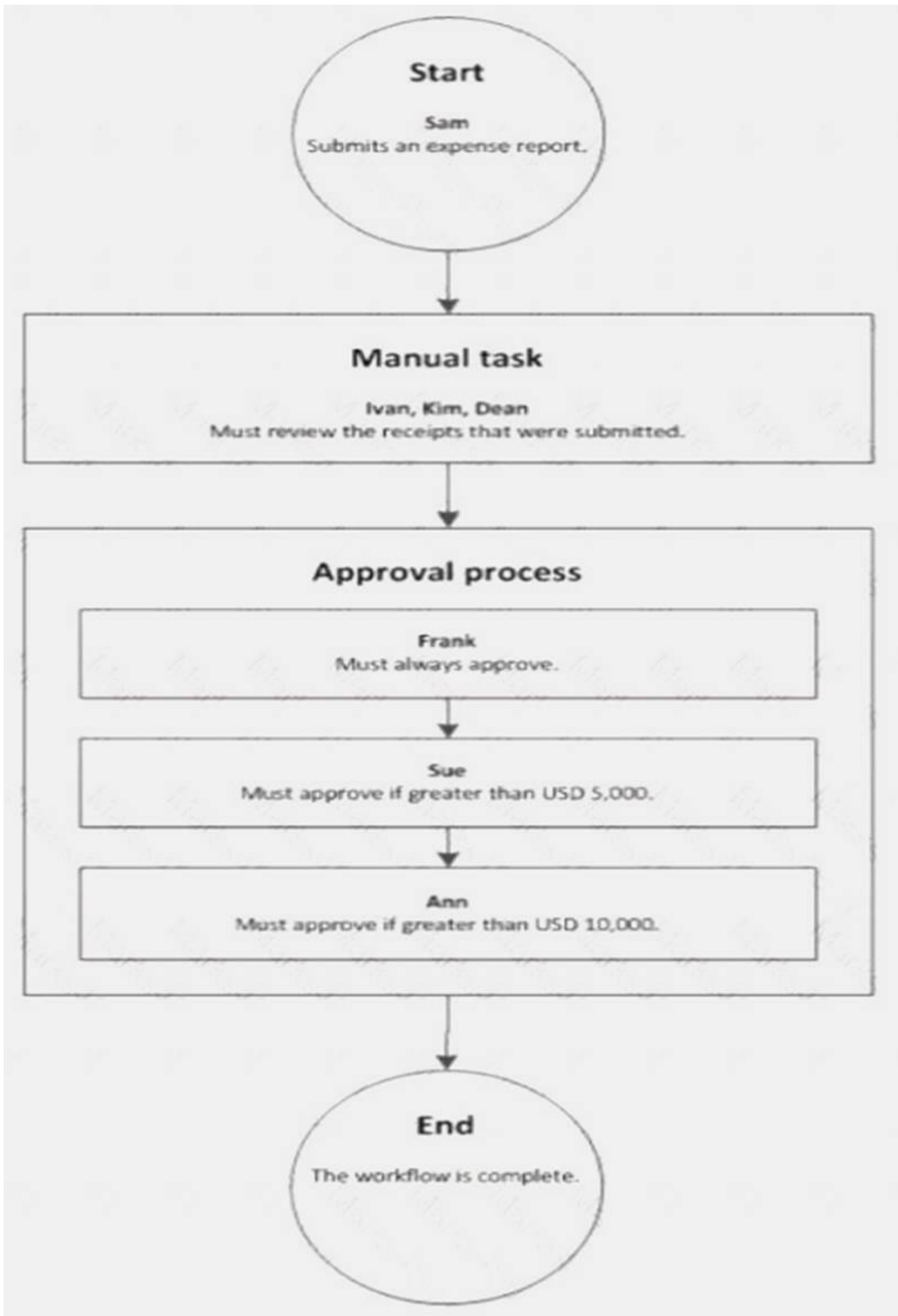
- A. Yes
- B. No

Answer: A

NEW QUESTION 36

- (Exam Topic 2)

A company sets up a workflow for expense reports. An employee named Sam submits an expense report totaling USD 7,000 to go through the workflow.



Use the drop-down menus to select the answer choice that answers each question based on the information presented in the graphic.

NOTE: Each correct selection is worth one point.

Answer Area	
Questions	Answer choice
What statement about the workflow is correct?	<div>Ann can reject the expense report.</div> <div>Ivan, Kim, and Dean must all complete the manual task.</div> <div>The workflow ends after Sue approves the expense report.</div> <div>The expense report will go through Frank, Sue, and Ann for approval.</div>
What type of workflow is this?	<div>Workflow with roles</div> <div>Workflow with a manual decision</div> <div>Workflow with multiple users in a task</div> <div>Workflow with a line-item workflow element</div>

- A. Mastered
B. Not Mastered

Answer: A

Explanation:

Reference:

<https://docs.microsoft.com/en-us/dynamicsax-2012/appuser-itpro/workflow-with-multiple-users-in-a-task>

NEW QUESTION 39

- (Exam Topic 2)

You are a system administrator using Dynamics 365 for Finance and Operations. You work in a project-based organization.

Each project has an approval process that will be assigned to different users of the system. Approvals are processed based on documents. Within those documents are different line items. Each line item may have a different approver.

You need to validate if the proposed action will satisfy the requirements.

For each of the following solutions, select Yes if the action meets the requirements. Otherwise, select No. NOTE: Each correct selection is worth one point.

Answer Area			
Action		Yes	No
Configure document types. Configure document management parameters.		<input type="radio"/>	<input type="radio"/>
Create a document workflow. Configure line-item workflow elements for the document workflow.		<input type="radio"/>	<input type="radio"/>
Create workflow actions for when the document is assigned to the approver.		<input type="radio"/>	<input type="radio"/>
Set up reason codes for electronic signatures.		<input type="radio"/>	<input type="radio"/>

- A. Mastered
B. Not Mastered

Answer: A

Explanation:

Answer Area			
Action		Yes	No
Configure document types. Configure document management parameters.		<input checked="" type="radio"/>	<input type="radio"/>
Create a document workflow. Configure line-item workflow elements for the document workflow.		<input type="radio"/>	<input checked="" type="radio"/>
Create workflow actions for when the document is assigned to the approver.		<input checked="" type="radio"/>	<input type="radio"/>
Set up reason codes for electronic signatures.		<input checked="" type="radio"/>	<input type="radio"/>

NEW QUESTION 41

- (Exam Topic 2)

Your company is using a highly customized version of Dynamics 365 for Finance and Operations. You have identified a new hotfix that will correct several important issues that have caused many user complaints.

You need to determine whether the hotfix will break any customizations.

Which four actions should you perform in sequence? To answer, move the appropriate actions from the list of actions to the answer area and arrange them in the correct order.

Actions

Answer Area

Upload the hotfix to Lifecycle Services

Download the hotfix from Lifecycle Services

Check in the entire hotfix as pending change and schedule and deploy it to the production environment

Build the hotfix in the development environment and accept changes

Install the hotfix in your Microsoft Azure DevOps application development environment in an Active state

Install the hotfix in your Microsoft Azure DevOps application development environment in a Pending state



- A. Mastered
B. Not Mastered

Answer: A

Explanation:

References:

<https://docs.microsoft.com/en-us/dynamics365/unified-operations/dev-itpro/migration-upgrade/install-metadata->

NEW QUESTION 46

- (Exam Topic 2)

Note: This question is part of a series of questions that present the same scenario. Each question in the series contains a unique solution that might meet the stated goals. Some question sets might have more than one correct solution, while others might not have a correct solution.

After you answer a question in this section, you will NOT be able to return to it. As a result, these questions will not appear in the review screen.

You are a Dynamics 365 for Finance and Operations security administrator.

When testing security setups, users report that certain roles are gaining access to sensitive information via a form in the system.

You must investigate which user roles have what visibility and access level to system objects, and then send a report to the implementation team to address security compliance concerns.

You need to report the information from the system. Solution: Generate the User role assignments report. Does the solution meet the goal?

- A. Yes
B. No

Answer: B

NEW QUESTION 49

- (Exam Topic 2)

Your company acquires hundreds of partnerships after it purchases a separate company. The separate company stores the partnership records in a legacy system.

You export Partnership and PartnershipGroup files from the legacy system into Microsoft Word format. You create Partnership and PartnershipGroup entities.

You need to import the partnerships into Dynamics 365 for Finance and Operations.

Which four actions should you perform in order? To answer, move four actions from the list of actions to the answer area and arrange them in the correct order.

Actions	Answer Area
Perform the data import.	
Convert the Word files to OData format. In the Dynamics 365 client Data management workspace, create a new data project.	
In SQL Server Management Studio, use the SQL Server Integration Services import wizard.	
In the Visual Studio Finance and Operations project, use the Data entity wizard.	
Convert the Word files to CSV format. In the Dynamics 365 client Data management workspace, create a new data project.	
For each file, select the entities and upload the files.	
Validate all entity data mapping.	

- A. Mastered
- B. Not Mastered

Answer: A

Explanation:

Actions	Answer Area
Perform the data import.	Convert the Word files to CSV format. In the Dynamics 365 client Data management workspace, create a new data project.
Convert the Word files to OData format. In the Dynamics 365 client Data management workspace, create a new data project.	
In SQL Server Management Studio, use the SQL Server Integration Services import wizard.	Perform the data import.
In the Visual Studio Finance and Operations project, use the Data entity wizard.	In SQL Server Management Studio, use the SQL Server Integration Services import wizard.
Convert the Word files to CSV format. In the Dynamics 365 client Data management workspace, create a new data project.	
For each file, select the entities and upload the files.	
Validate all entity data mapping.	Validate all entity data mapping.

NEW QUESTION 54

- (Exam Topic 2)

Note: This question is part of a series of questions that present the same scenario. Each question in the series contains a unique solution that might meet the stated goals. Some question sets might have more than one correct solution, while others might not have a correct solution.

After you answer a question in this section, you will NOT be able to return to it. As a result, these questions will not appear in the review screen.

You are configuring a Dynamics 365 for Finance and Operations environment. You must set up Microsoft Excel data exports.

You need to verify that the solution will result in a successful export of data to Excel.

Solution: Use Open in Excel to open an entity form that does not share the same root data source by implementing the ExportToExcelGeneratedCustomExport interface.

Does the solution meet the goal?

- A. Yes
- B. No

Answer: B

NEW QUESTION 55

- (Exam Topic 2)

You set up Dynamics 365 for Finance and Operations. Your organization will use email with the application.

You need to ensure that email will be sent using typical secure settings. What setting must be set as specified?

- A. In-place hold and Litigation hold are enabled.
- B. In-place eDiscovery is enabled,
- C. The SMTP port field is set to 587.
- D. Retention policies are enabled.

Answer: C

NEW QUESTION 57

- (Exam Topic 2)

A company plans to implement the case management feature of Dynamics 365 for Finance and Operations. You need to describe the scenarios in which you should use the case management tool. Which three scenarios should be used? Each correct answer presents a complete solution. NOTE: Each correct selection is worth one point.

- A. Since case activities can be assigned to different people, a case can use workflow.
- B. Although the sales module already has return-order functionality, case management is still used for customer returns and claims.
- C. Knowledge articles used by case management are associated with specific functional modules.
- D. A human resources generalist can use the case management tool to track employee interactions, even though the department stores confidential information about employees.
- E. A case can be used to track both external and internal issues.

Answer: CDE

Explanation:

References:

<https://docs.microsoft.com/en-us/dynamics365/unified-operations/fin-and-ops/organization-administration/cases>

NEW QUESTION 62

- (Exam Topic 2)

Note: This question is part of a series of questions that present the same scenario. Each question in the series contains a unique solution that might meet the stated goals. Some question sets might have more than one correct solution, while others might not have a correct solution.

After you answer a question in this section, you will NOT be able to return to it. As a result, these questions will not appear in the review screen.

You are developing a file-based integration to Dynamics 365 for Finance and Operations.

Microsoft Excel files with 15,000 or more records need to be imported into the system periodically by individual users. The records need to be imported in full within a 5-minute approved window.

You need to determine how to accomplish the import into the system.

Solution: Import the data by using the Data Management Framework's package API. Does the solution meet the goal?

- A. Yes
- B. No

Answer: B

NEW QUESTION 64

- (Exam Topic 2)

A company is migrating to Dynamics 365 for Finance and Operations from a legacy system. The company is creating new questionnaires for customers.

When the survey responses come in, the company wants to provide ratings as a foundation for a further discussion.

You set up questionnaire types, question types, and questionnaire parameters. You need to design the questionnaire.

In which order should you perform the actions? To answer, move all actions to the answer area and arrange them in the correct order.

Actions

Attach questions to the questionnaire

Set up the questionnaire

Set up questions and their association

Set up answer groups and answers

Answer Area

- A. Mastered
- B. Not Mastered

Answer: A

Explanation:
References:
<https://docs.microsoft.com/en-us/dynamics365/unified-operations/talent/design-questionnaires>

NEW QUESTION 68

- (Exam Topic 2)
Note: This question is part of a series of questions that present the same scenario. Each question in the series contains a unique solution that might meet the stated goals. Some question sets might have more than one correct solution, while others might not have a correct solution.
After you answer a question in this section, you will NOT be able to return to it. As a result, these questions will not appear in the review screen.
You are a Dynamics 365 for Finance and Operations system administrator. You have a test environment that is used by several people at any given time. You create a new data entity in your development and migrate the code to the test environment. In the test environment, you are unable to find the data entity in the list.
You need to locate the data entity.
Solution: In the Data management framework parameter screen, refresh the Entity list. Does the solution meet the goal?

- A. Yes
- B. No

Answer: A

NEW QUESTION 69

- (Exam Topic 2)
A company needs to set up its printers to work with Dynamics 365 for Finance and Operations. You need to set up the printers for network printing from the Dynamics 365 client browser.
Which three actions should be performed in order? To answer, move all actions from the list of actions to the answer area and arrange them in the correct order.

Actions

Activate the network printers

Install and configure a document routing agent

Set up the network printer and assign a static IP

Register network printers in Finance and Operations

Answer Area

- A. Mastered
- B. Not Mastered

Answer: A

Explanation:
References:
<https://docs.microsoft.com/en-us/dynamics365/unified-operations/dev-itpro/analytics/install-document-routing-a>

NEW QUESTION 71

- (Exam Topic 2)

A company implements Dynamics 365 for Finance and Operations.

The company's purchasing agents must be able to create purchase orders for a first-time vendor. All new vendor requests must be reviewed and approved by the accounts payable manager.

A workflow must send an email to the accounts payable manager and the senior accounts payable clerk notifying both when a vendor application is waiting for approval. The workflow must be configured to account for people changing job roles.

You need to configure the system to meet these requirements. What should you do?

- A. On the Recipient tab, select Use
- B. Then, select the users for the accounts payable manager and the senior accounts payable clerk from the list.
- C. On the Recipient tab, select Workflow use
- D. Then, select the user for purchasing agents from the list.
- E. On the Recipient tab, select Workflow use
- F. Then, select the role for vendor approval from the list.
- G. On the Recipient tab, select Use
- H. Then, select the role for vendor approval from the list.
- I. On the Recipient tab, select Participan
- J. Then, select the role for vendor approval from the list.
- K. On the Recipient tab, select Participan
- L. Then, select the users for the accounts payable manager and the senior accounts payable clerk from the list.

Answer: B

NEW QUESTION 75

- (Exam Topic 2)

Note: This question is part of a series of questions that present the same scenario. Each question in the series contains a unique solution that might meet the stated goals. Some question sets might have more than one correct solution, while others might not have a correct solution.

After you answer a question in this section, you will NOT be able to return to it. As a result, these questions will not appear in the review screen.

You are a Dynamics 365 for Finance and Operations system administrator. You have a test environment that is used by several people at any given time.

You create a new data entity in your development and migrate the code to the test environment. In the test environment, you are unable to find the data entity in the list.

You need to locate the data entity. Solution: Reopen the client browser. Does the solution meet the goal?

- A. Yes
- B. No

Answer: B

NEW QUESTION 76

- (Exam Topic 2)

You manage a Dynamics 365 for Finance and Operations environment.

In preparation for being migrated into a new environment, data packages are being numbered in alignment with the default numbering formats in Lifecycle Services. A package is named 03.01.002.

You need to identify what this package contains. To answer, select the appropriate option in the answer area. NOTE: Each correct selection is worth one point.

Segment	Component
03	<div>The environment The module The data type The month</div>
01	<div>The module The month The sequence number The data type</div>
002	<div>The sequence number The data package version The data entity The data type reference</div>

- A. Mastered
- B. Not Mastered

Answer: A

Explanation:

Segment	Component
03	<div>The environment The module The data type The month</div>
01	<div>The module The month The sequence number The data type</div>
002	<div>The sequence number The data package version The data entity The data type reference</div>

NEW QUESTION 77

- (Exam Topic 2)

You are a Dynamics 365 for Finance and Operations systems administrator.

Microsoft recently released a new feature for public preview that would add significant value to your organization without licensing adjustments.

You need to enable the feature.
Where can you enable the preview feature?

- A. Solution management
- B. Lifecycle Services
- C. Organizational administration module
- D. experience.dynamics.com
- E. System administration module

Answer: E

NEW QUESTION 81

- (Exam Topic 2)

Note: This question is part of a series of questions that present the same scenario. Each question in the series contains a unique solution that might meet the stated goals. Some question sets might have more than one correct solution, while others might not have a correct solution.

After you answer a question in this section, you will NOT be able to return to it. As a result, these questions will not appear in the review screen.

You are developing a file-based integration to Dynamics 365 for Finance and Operations.

Microsoft Excel files with 15,000 or more records need to be imported into the system periodically by individual users. The records need to be imported in full within a 5-minute approved window.

You need to determine how to accomplish the import into the system. Solution: Import the data by using the Excel Add-in.

Does the solution meet the goal?

- A. Yes
- B. No

Answer: A

NEW QUESTION 83

- (Exam Topic 2)

You are a Dynamics 365 for Finance and Operations security administrator. Users are reporting that they cannot access a given form in the system.

You need to quickly identify what roles, duties, and privileges grant access to this form to determine the best course of action for granting access.

What should you do?

- A. Security duty assignments report
- B. Security role access report
- C. Security development tool
- D. Security diagnostics
- E. Maintenance mode

Answer: D

NEW QUESTION 86

- (Exam Topic 2)

You set up a new installation of Dynamics 365 for Finance and Operations for a Fortune 500 company. The company is organized into divisions.

You need to design the structure in the application.

What application features should you use? To answer, drag the appropriate setting to the correct drop targets. Each source may be used once, more than once, or not at all. You may need to drag the split bar between panes or scroll to view content.

NOTE: Each correct selection is worth one point.

Application features	Answer Area
Legal entity	Organizational structure
Business unit	The fortune 500 company
Department	A semi-autonomous operating entity
Value stream	Human resources
	Production flow activity control
	Application feature
	Application feature
	Application feature
	Application feature

- A. Mastered
- B. Not Mastered

Answer: A

Explanation:

References:

<https://docs.microsoft.com/en-us/dynamics365/unified-operations/fin-and-ops/organization-administration/organ>

NEW QUESTION 90

- (Exam Topic 2)

You set up a new instance of Dynamics 365 for Finance and Operations. Your company sells widgets in cases of 12 units and pallets of 144 cases. You need to establish the units of measure.

Which parameter is used to detail the units of measure? To answer, select the detail to match the parameter in the answer area.

NOTE: Each correct selection is worth one point.

Parameter	Detail
Unit class	<div>Quantity</div> <div>Mass</div> <div>Area</div>
From unit in widgets-per-case conversion	<div>Unit</div> <div>Case</div> <div>Pallet</div> <div>Widgets</div>
To unit in cases-per-pallet conversion	<div>Unit</div> <div>Case</div> <div>Pallet</div> <div>Widgets</div>

- A. Mastered
- B. Not Mastered

Answer: A

Explanation:

Parameter	Detail
Unit class	<div>Quantity</div> <div>Mass</div> <div>Area</div>
From unit in widgets-per-case conversion	<div>Unit</div> <div>Case</div> <div>Pallet</div> <div>Widgets</div>
To unit in cases-per-pallet conversion	<div>Unit</div> <div>Case</div> <div>Pallet</div> <div>Widgets</div>

NEW QUESTION 91

- (Exam Topic 2)

You are a Dynamics 365 for Finance and Operations system administrator.

A user is reporting an issue with the Sales Order form. The UI for the form is not loading properly, and there are some performance issues. The object was working fine until the most recent update release. The user has personalized this form, is using Microsoft Internet Explorer 11, and no other users are reporting issues. You need to resolve the issue. What should you do?

- A. Export, delete, then reimport the usage data for the sales form object.
- B. Disable and then re-enable the user.
- C. Reset all the usage data for the user.
- D. Reimport and compile the AOT object causing issues.

Answer: C

NEW QUESTION 96

- (Exam Topic 2)

A company implements Dynamics 365 for Finance and Operations.

The company wants to utilize Case management to track project issues and risks and associate them to the projects. Project managers will be responsible for managing the new cases.

You need to configure the system. What should you do?

- A. Create case subcategories named Issue and Risk.
- B. Create parent case categories named Issue and Risk.
- C. Create case activities for Issue and Risk.
- D. Create case category security roles named Issue and Risk and assign them to the Project managers duty.

Answer: A

NEW QUESTION 97

- (Exam Topic 2)

A company plans to set up an organizational hierarchy to manage organizational relationships. You need to identify which organizational purpose to use. What purpose can you assign to an organizational hierarchy?

- A. Centralized payments
- B. Financial reason code
- C. Cost center
- D. Price models

Answer: A

Explanation:

Reference:

<https://docs.microsoft.com/en-us/dynamics365/unified-operations/financials/cash-bank-management/set-up-cent>

NEW QUESTION 102

- (Exam Topic 2)

You are a Dynamics 365 for Finance and Operations systems administrator.

An issue has been reported that appears to be a base Dynamics 365 bug. The system was last updated three weeks ago. Searching for the issue by description in Lifecycle Services is not working.

You need to determine other ways to search for similar issues to help narrow down the search before opening a Microsoft ticket.

What are two ways to search for a released hotfix? Each correct answer presents a complete solution.

NOTE: Each correct selection is worth one point.

- A. By industry
- B. By Microsoft support ticket number
- C. By AOT object name
- D. Date range for release

Answer: BC

Explanation:

References:

<https://docs.microsoft.com/en-us/dynamics365/unified-operations/dev-itpro/lifecycle-services/issue-search-lcs>

NEW QUESTION 103

.....

Relate Links

100% Pass Your mb-300 Exam with Examible Prep Materials

<https://www.exambible.com/mb-300-exam/>

Contact us

We are proud of our high-quality customer service, which serves you around the clock 24/7.

Viste - <https://www.exambible.com/>