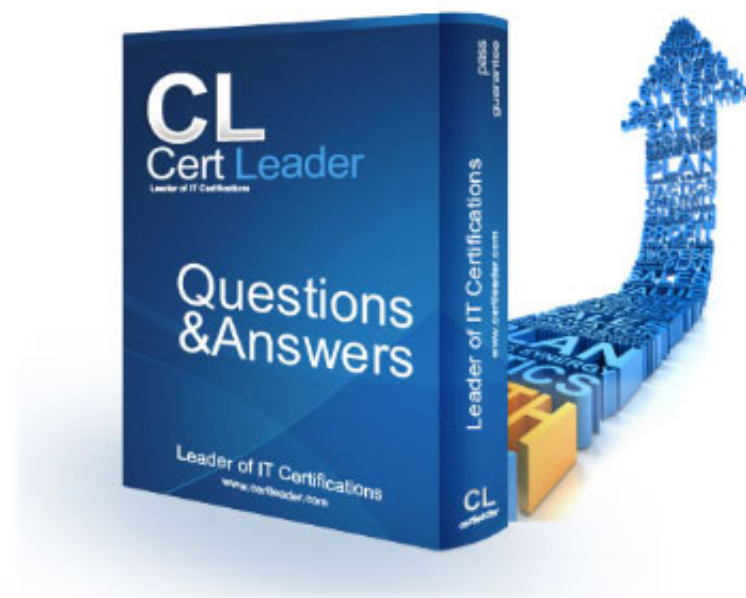


## 200-301 Dumps

### Cisco Certified Network Associate

<https://www.certleader.com/200-301-dumps.html>





**NEW QUESTION 1**

Which design element is a best practice when deploying an 802.11b wireless infrastructure?

- A. disabling TPC so that access points can negotiate signal levels with their attached wireless devices.
- B. setting the maximum data rate to 54 Mbps on the Cisco Wireless LAN Controller
- C. allocating nonoverlapping channels to access points that are in close physical proximity to one another
- D. configuring access points to provide clients with a maximum of 5 Mbps

**Answer: C**

**NEW QUESTION 2**

Which two capacities of Cisco DNA Center make it more extensible? (Choose two)

- A. adapters that support all families of Cisco IOS software
- B. SDKs that support interaction with third-party network equipment
- C. customized versions for small, medium, and large enterprises
- D. REST APIs that allow for external applications to interact natively with Cisco DNA Center
- E. modular design that is upgradable as needed

**Answer: BD**

**NEW QUESTION 3**

netmask	must be unique
OSPF process ID	
router ID	must match
IP address	
area ID	
timers	

- A. Mastered
- B. Not Mastered

**Answer: A**

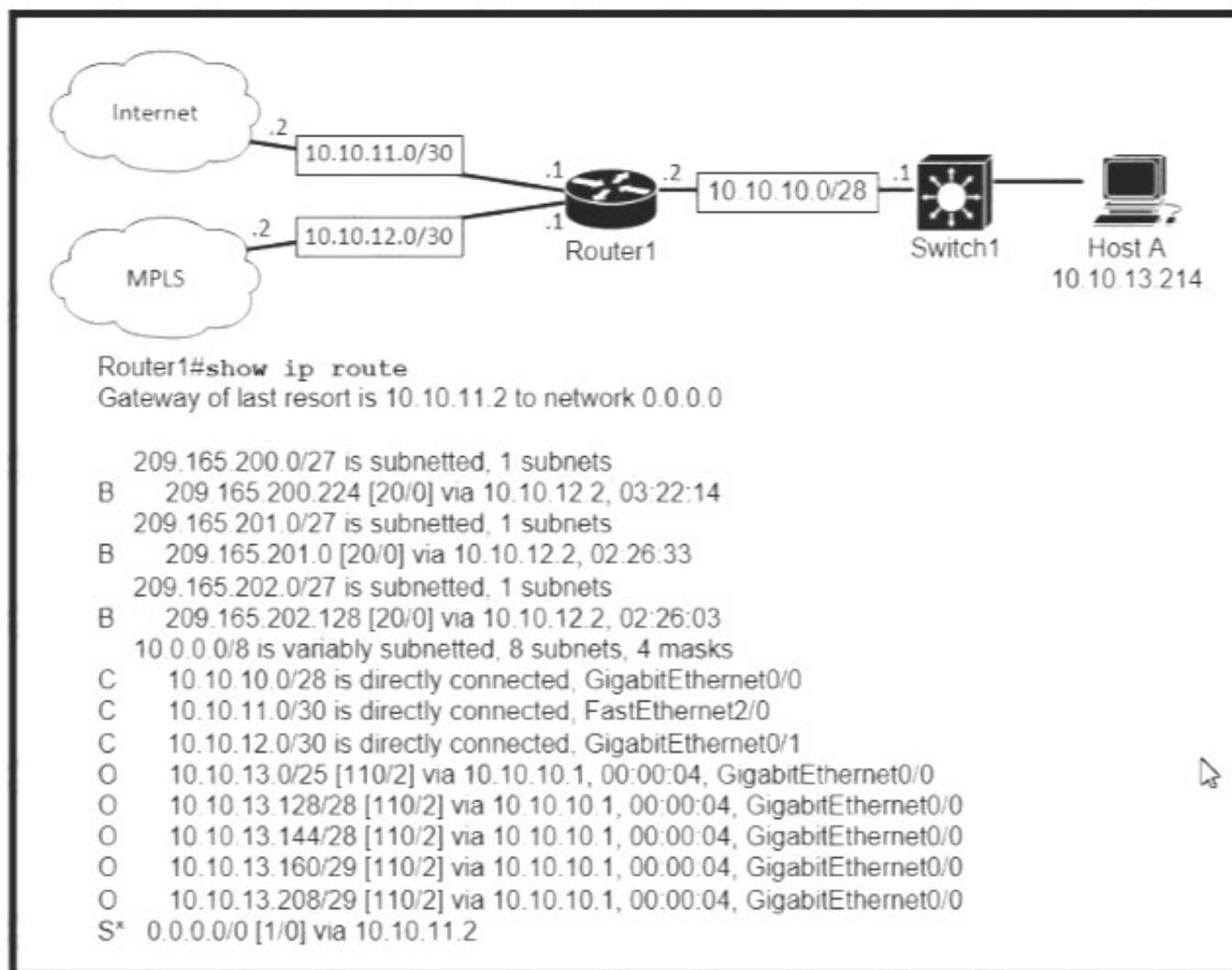
**Explanation:**

netmask	must be unique
OSPF process ID	
router ID	must match
IP address	
area ID	
timers	



#### NEW QUESTION 4

Refer to the exhibit.



Which prefix does Router 1 use for traffic to Host A?

- A. 10.10.10.0/28
- B. 10.10.13.0/25
- C. 10.10.13.144/28
- D. 10.10.13.208/29

**Answer: C**

#### NEW QUESTION 5

Which two actions are performed by the Weighted Random Early Detection mechanism? (Choose two)

- A. It drops lower-priority packets before it drops higher-priority packets
- B. It can identify different flows with a high level of granularity
- C. It guarantees the delivery of high-priority packets
- D. It can mitigate congestion by preventing the queue from filling up
- E. IT supports protocol discovery

**Answer: BD**

#### NEW QUESTION 6

When OSPF learns multiple paths to a network, how does it select a route?

- A. It multiple the active K value by 256 to calculate the route with the lowest metric.
- B. For each existing interface, it adds the metric from the source router to the destination to calculate the route with the lowest bandwidth.
- C. It divides a reference bandwidth of 100 Mbps by the actual bandwidth of the existing interface to calculate the router with the lowest cost.
- D. It count the number of hops between the source router and the destination to determine the router with the lowest metric

**Answer: A**

#### NEW QUESTION 7

What is the primary different between AAA authentication and authorization?

- A. Authentication verifies a username and password, and authorization handles the communication between the authentication agent and the user database.
- B. Authentication identifies a user who is attempting to access a system, and authorization validates the users password
- C. Authentication identifies and verifies a user who is attempting to access a system, and authorization controls the tasks the user can perform.
- D. Authentication controls the system processes a user can access and authorization logs the activities the user initiates

**Answer: C**

#### NEW QUESTION 8

Drag and drop the threat-mitigation techniques from the left onto the types of threat or attack they mitigate on the right.  
check the answer below.



Configure VACL.

Configure dynamic ARP inspection.

Configure BPDU guard.

Configure root guard.

- A. Mastered
- B. Not Mastered

**Answer:** A

**Explanation:**

Configure VACL.

Configure dynamic ARP inspection.

Configure BPDU guard.

Configure root guard.

#### NEW QUESTION 9

An engineer must configure a/30 subnet between two routers. Which usable IP address and subnet mask combination meets this criteria?

```
interface e0/0
description to HQ-A371:10975
ip address 172.16.1.4 255.255.255.248
```

```
interface e0/0
description to HQ-A371:10975
ip address 10.2.1.3 255.255.255.252
```

```
interface e0/0
description to HQ-A371:10975
ip address 192.168.1.1 255.255.255.248
```

```
interface e0/0
description to HQ-A371:10975
ip address 209.165.201.2 255.255.255.252
```

- A. Option A
- B. Option B
- C. Option C
- D. Option D

**Answer:** C

#### NEW QUESTION 10

Drag and drop the Cisco Wireless LAN Controller security settings from the left onto the correct security mechanism categories on the right.

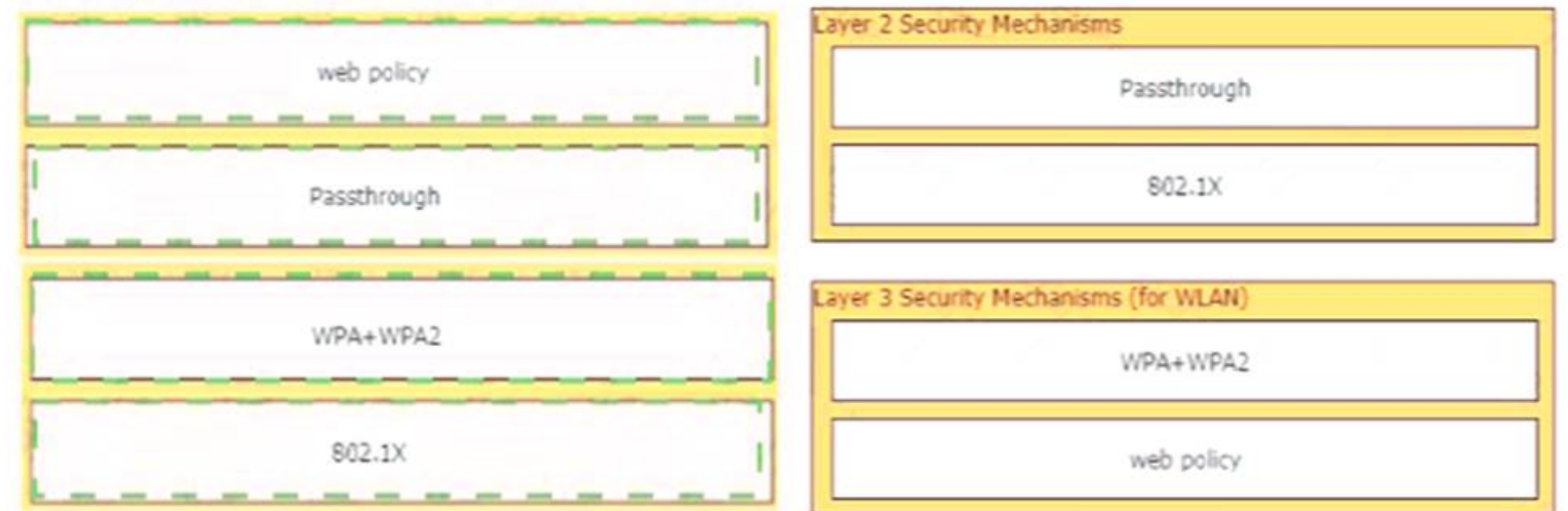




- A. Mastered
- B. Not Mastered

**Answer:** A

**Explanation:**



#### NEW QUESTION 10

Refer to the exhibit.

```
R2#show ip nat translations
Pro Inside global      Inside local  Outside local  Outside global
tcp 172.23.104.3:43268 10.4.4.4:43268 172.23.103.10:23 172.23.103.10:23
tcp 172.23.104.4:45507 10.4.4.5:45507 172.23.103.10:80 172.23.103.10:80
```

An engineer configured NAT translations and has verified that the configuration is correct. Which IP address is the source IP?

- A. 10.4.4.4
- B. 10.4.4.5
- C. 172.23.103.10
- D. 172.23.104.4

**Answer:** C

#### NEW QUESTION 14

Refer to the exhibit.



```
R1# show ip route

D    192.168.16.0/26 [90/2679326] via 192.168.1.1
R    192.168.16.0/24 [120/3] via 192.168.1.2
O    192.168.16.0/21 [110/2] via 192.168.1.3
i L1 192.168.16.0/27 [115/30] via 192.168.1.4
```

Which route does R1 select for traffic that is destined to 192.168.16.2?

A. A.-192.168.16.0/21 B. 192.168.16.0/24 C. 192.168.16.0/26 D. 192.168.16.0/27

**Answer:** B

#### NEW QUESTION 19

Drag and drop the AAA functions from the left onto the correct AAA services on the right

records user activities

restricts the services that are available to a user

Authentication

identifies the user

controls the actions that a user can perform

Authorization

provides analytical information for the network administrator

verifies the password associated with a user

Accounting

A. Mastered  
B. Not Mastered

**Answer:** A

**Explanation:**





#### NEW QUESTION 24

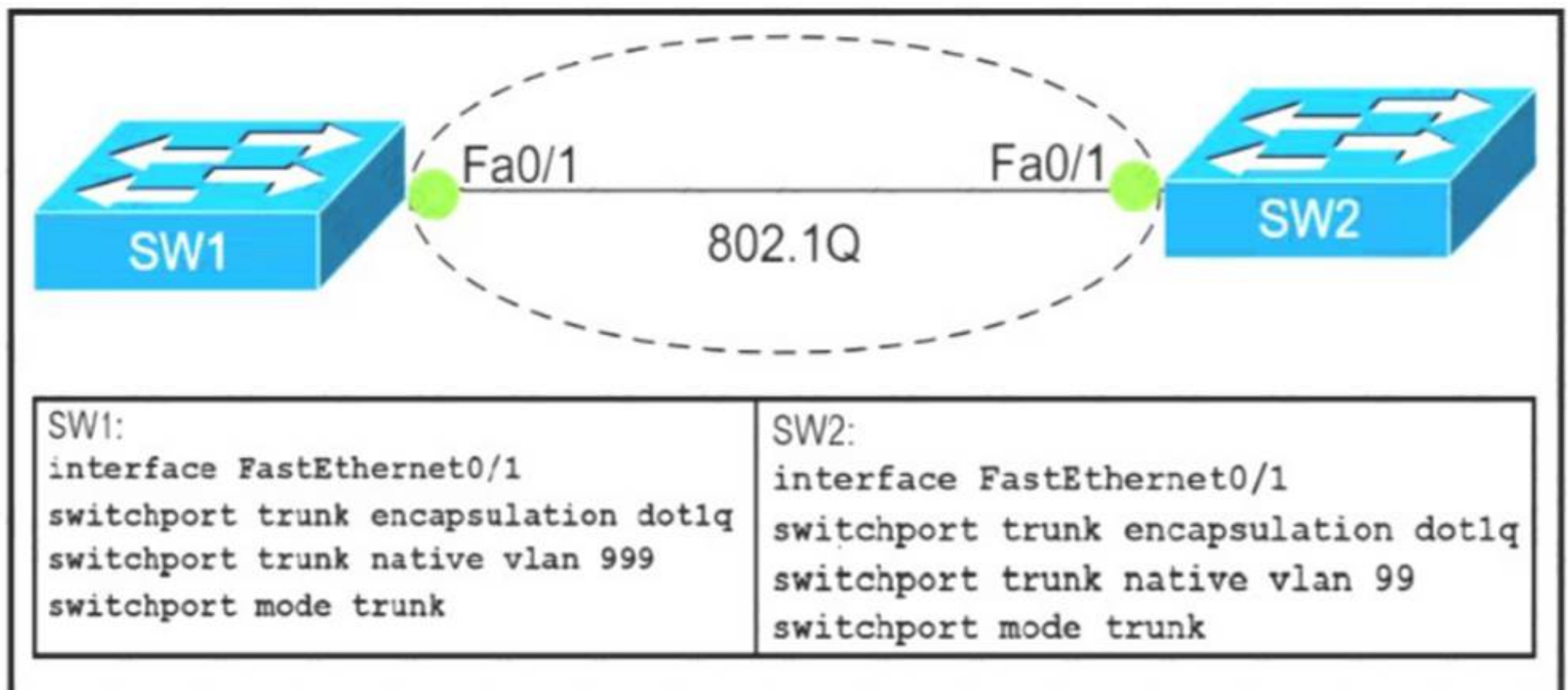
Which two values or settings must be entered when configuring a new WLAN in the Cisco Wireless LAN Controller GUI? (Choose two)

- A. management interface settings
- B. QoS settings
- C. Ip address of one or more access points
- D. SSID
- E. Profile name

**Answer:** DE

#### NEW QUESTION 28

Refer to Exhibit.



Which action do the switches take on the trunk link?

- A. The trunk does not form and the ports go into an err-disabled status.
- B. The trunk forms but the mismatched native VLANs are merged into a single broadcast domain.



- C. The trunk does not form, but VLAN 99 and VLAN 999 are allowed to traverse the link.  
D. The trunk forms but VLAN 99 and VLAN 999 are in a shutdown state.

**Answer:** C

**NEW QUESTION 30**

Refer to the exhibit.

```
Designated Router (ID) 10.11.11.11, Interface address 10.10.10.1
Backup Designated router (ID) 10.3.3.3, Interface address 10.10.10.3
Timer intervals configured, Hello 10, Dead 40, Wait 40, Retransmit 5
oob-resync timeout 40
Hello due in 00:00:08
Supports Link-local Signaling (LLS)
Cisco NSF helper support enabled
IETF NSF helper support enabled
Index 1/1/1, flood queue length 0
Next 0x0(0)/0x0(0)/0x0(0)
Last flood scan length is 1, maximum is 6
Last flood scan time is 0 msec, maximum is 1 msec
Neighbor Count is 3, Adjacent neighbor count is 3
Adjacent with neighbor 10.1.1.4
Adjacent with neighbor 10.2.2.2
Adjacent with neighbor 10.3.3.3 (Backup Designated Router)
Suppress hello for 0 neighbor(s)
```

The show ip ospf interface command has been executed on R1. How is OSPF configured?

- A. The interface is not participating in OSPF.  
B. A point-to-point network type is configured.  
C. The default Hello and Dead timers are in use.  
D. There are six OSPF neighbors on this interface.

**Answer:** A

**NEW QUESTION 34**

Which QoS Profile is selected in the GUI when configuring a voice over WLAN deployment?

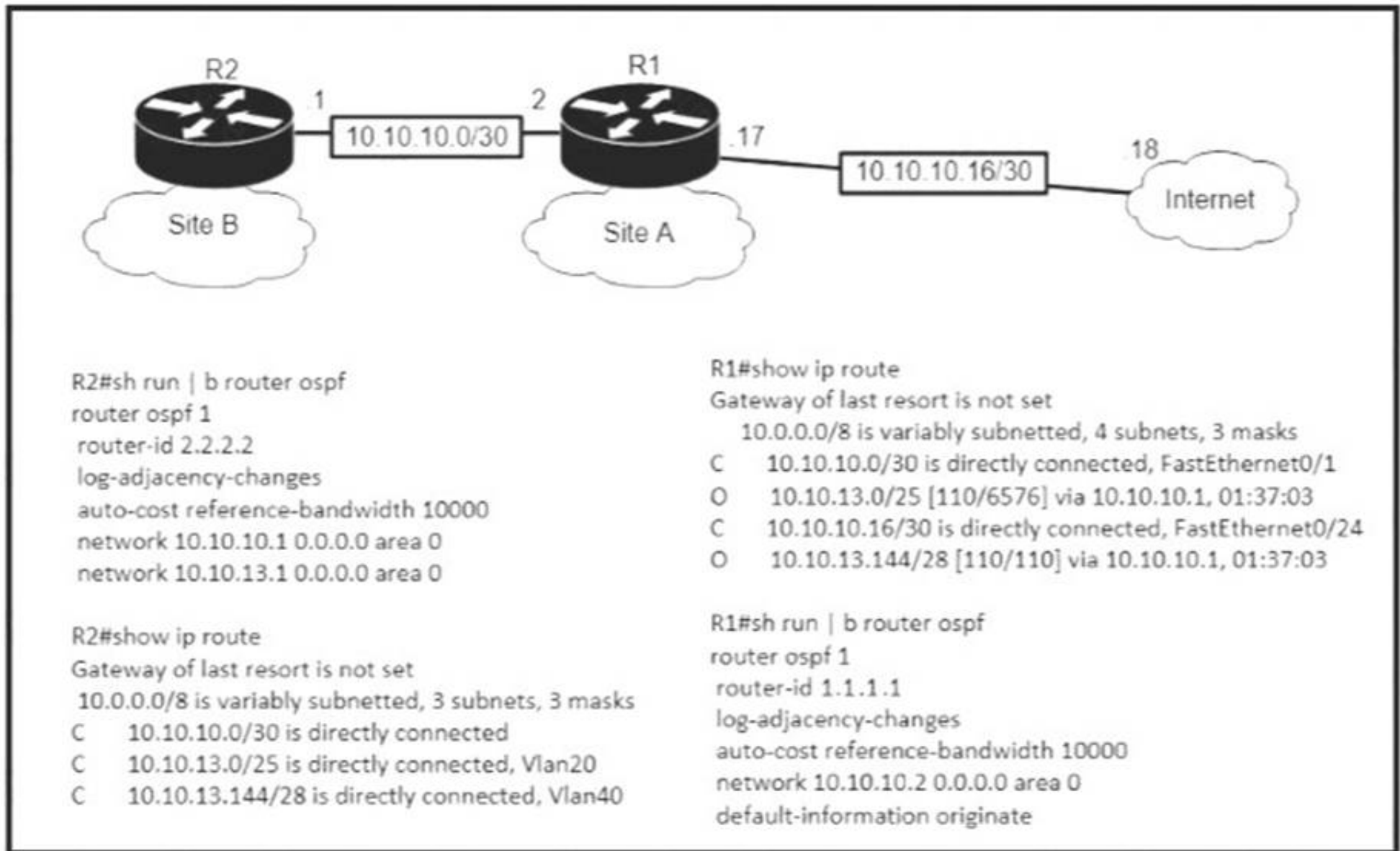
- A. Bronze  
B. Platinum  
C. Silver  
D. Gold

**Answer:** B

**NEW QUESTION 36**

Refer to the exhibit.





An engineer is bringing up a new circuit to the MPLS provider on the Gi0/1 interface of Router1. The new circuit uses eBGP and teams the route to VLAN25 from the BGP path. What is the expected behavior for the traffic flow for route 10.10.13.0/25?

- A. Traffic to 10.10.13.0/25 is load balanced out of multiple interfaces
- B. Route 10.10.13.0/25 is updated in the routing table as being learned from interface Gi0/1.
- C. Traffic to 10.10.13.0/25 is asymmetrical
- D. Route 10.10.13.0/25 learned via the Gi0/0 interface remains in the routing table

**Answer: D**

#### NEW QUESTION 37

Which statement identifies the functionality of virtual machines?

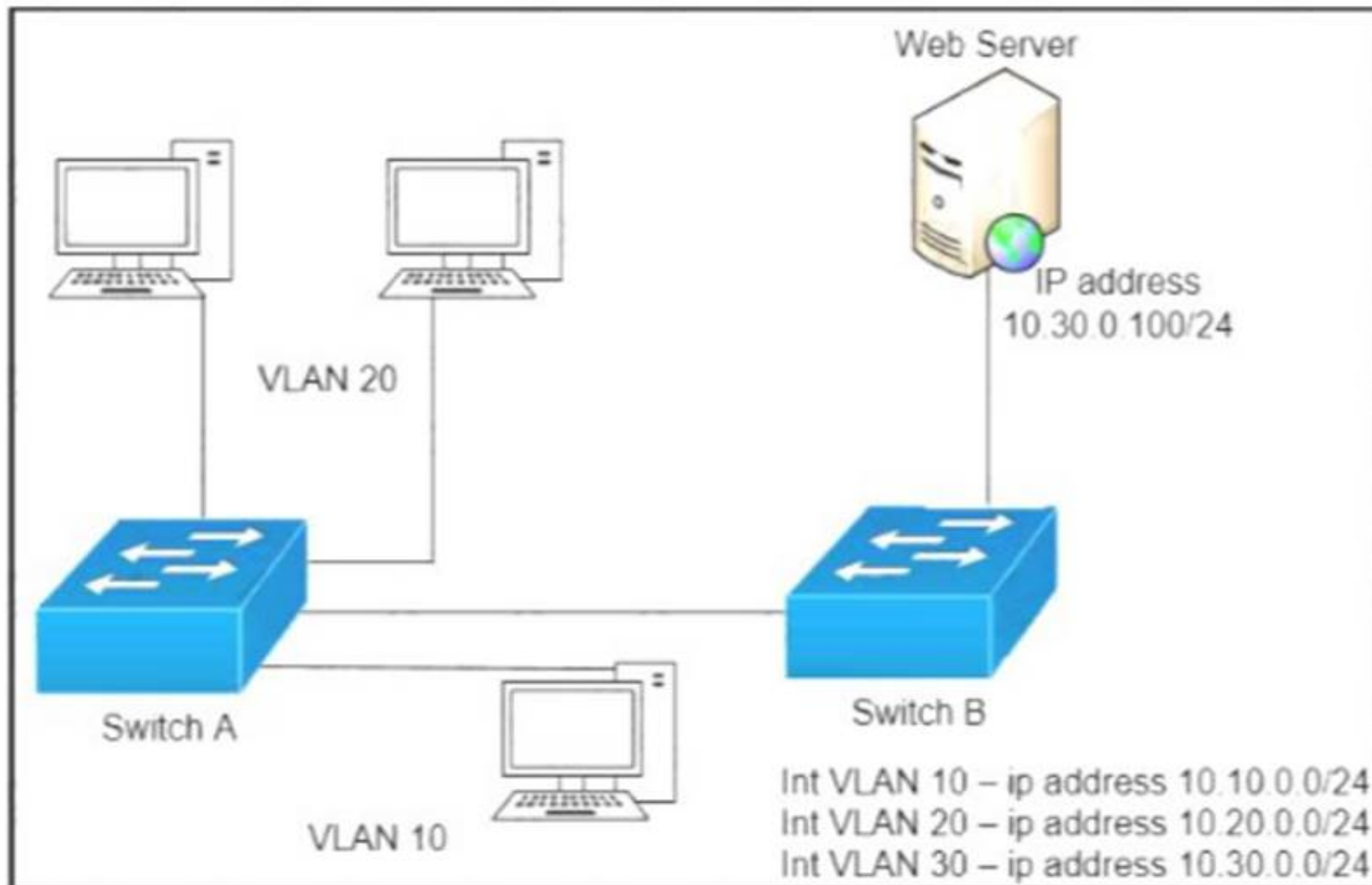
- A. Virtualized servers run most efficiently when they are physically connected to a switch that is separate from the hypervisor
- B. The hypervisor can virtualize physical components including CPU, memory, and storage
- C. Each hypervisor can support a single virtual machine and a single software switch
- D. The hypervisor communicates on Layer 3 without the need for additional resources

**Answer: D**

#### NEW QUESTION 39

Refer to the exhibit.





A network engineer must block access for all computers on VLAN 20 to the web server via HTTP. All other computers must be able to access the web server. Which configuration when applied to switch A accomplishes this task?

- ☐

```
config t
ip access-list extended wwwblock
deny tcp any host 10.30.0.100 eq 80
int vlan 10
ip access-group wwwblock in
```
- ☐

```
config t
ip access-list extended wwwblock
deny tcp any host 10.30.0.100 eq 80
permit ip any any
int vlan 20
ip access-group wwwblock in
```
- ☐

```
config t
ip access-list extended wwwblock
permit ip any any
deny tcp any host 10.30.0.100 eq 80
int vlan 30
ip access-group wwwblock in
```
- ☐

```
config t
ip access-list extended wwwblock
permit ip any any
deny tcp any host 10.30.0.100 eq 80
int vlan 20
ip access-group wwwblock in
```

- A. Option A
- B. Option B
- C. Option C
- D. Option D

**Answer: B**

#### NEW QUESTION 41

Two switches are connected and using Cisco Dynamic Trunking Protocol. SW1 is set to Dynamic Desirable. What is the result of this configuration?

- A. The link is in a down state.
- B. The link is in an error disabled state.
- C. The link becomes an access port.
- D. The link becomes a trunk port.

**Answer: D**



#### NEW QUESTION 42

Which feature on the Cisco Wireless LAN Controller when enabled restricts management access from specific networks?

- A. CPUACL
- B. TACACS
- C. Flex ACL
- D. RADIUS

**Answer: B**

#### NEW QUESTION 43

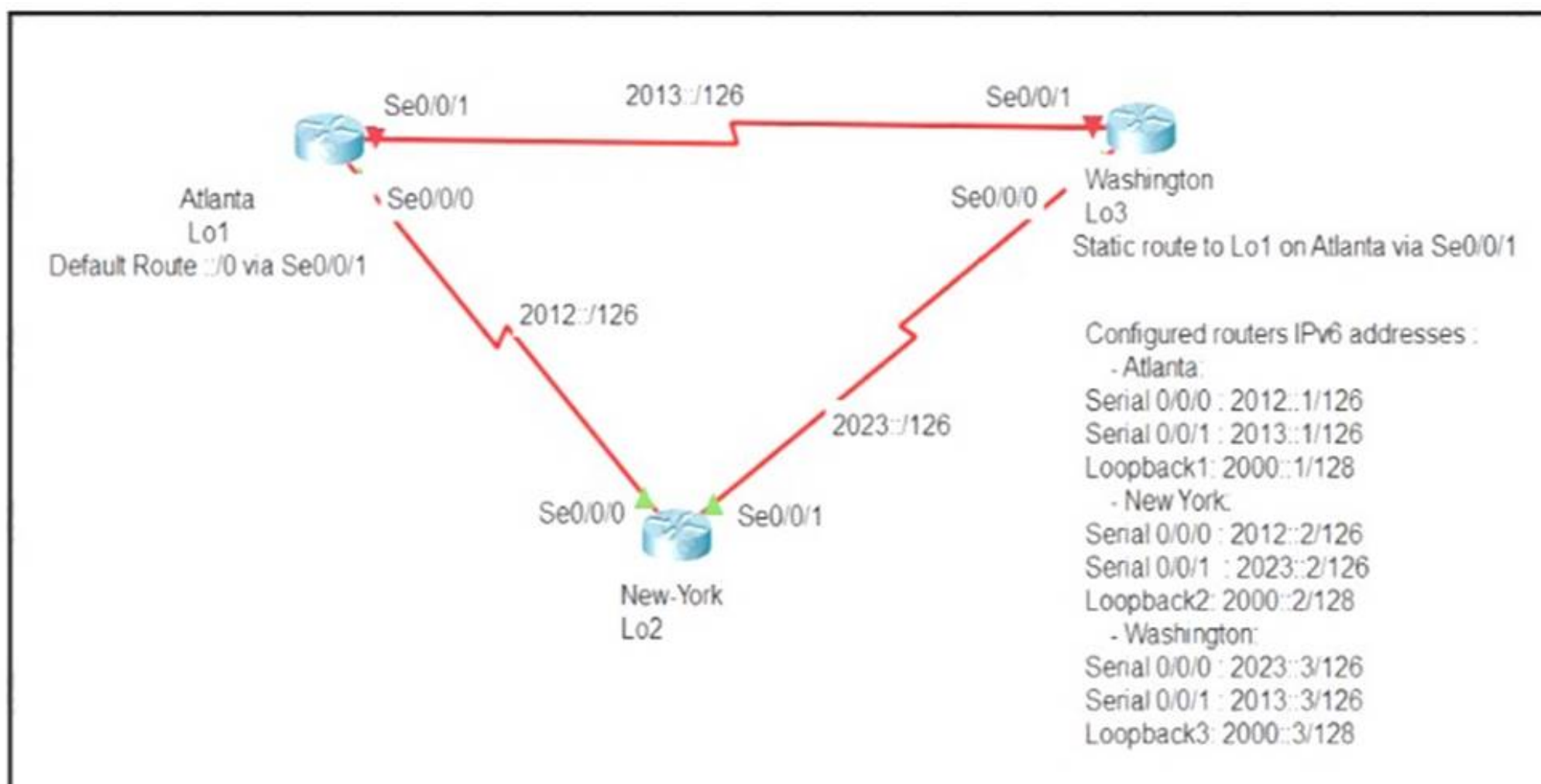
Which command automatically generates an IPv6 address from a specified IPv6 prefix and MAC address of an interface?

- A. ipv6 address dhcp
- B. ipv6 address 2001:DB8:5:112::/64 eui-64
- C. ipv6 address autoconfig
- D. ipv6 address 2001:DB8:5:112::2/64 link-local

**Answer: C**

#### NEW QUESTION 45

Refer to Exhibit.



An engineer is configuring the NEW York router to reach the Lo1 interface of the Atlanta router using interface Se0/0/0 as the primary path. Which two commands must be configured on the New York router so that it can reach the Lo1 interface of the Atlanta router via Washington when the link between New York and Atlanta goes down? (Choose two)

- A. ipv6 router 2000::1/128 2012::1
- B. ipv6 router 2000::1/128 2012::1 5
- C. ipv6 router 2000::1/128 2012::2
- D. ipv6 router 2000::1/128 2023::2 5
- E. ipv6 router 2000::1/128 2023::3 5

**Answer: DE**

#### NEW QUESTION 49

Drag and drop the IPv4 network subnets from the left onto the correct usable host ranges on the right



172.28.228.144/18	172.28.228.1 - 172.28.229.254
172.28.228.144/21	172.28.224.1 - 172.28.231.254
172.28.228.144/23	172.28.228.129 - 172.28.228.254
172.28.228.144/25	172.28.228.145 - 172.28.228.150
172.28.228.144/29	172.28.192.1 - 172.28.255.254

- A. Mastered  
B. Not Mastered

**Answer:** A

**Explanation:**

172.28.228.144/18	172.28.228.144/21
172.28.228.144/21	172.28.228.144/29
172.28.228.144/23	172.28.228.144/23
172.28.228.144/25	172.28.228.144/25
172.28.228.144/29	172.28.228.144/18

#### NEW QUESTION 50

Which two tasks must be performed to configure NTP to a trusted server in client mode on a single network device? (Choose two)

- A. Enable NTP authentication.  
B. Verify the time zone.  
C. Disable NTP broadcasts  
D. Specify the IP address of the NTP server  
E. Set the NTP server private key

**Answer:** DE

#### NEW QUESTION 54

Which result occurs when PortFast is enabled on an interface that is connected to another switch?

- A. Spanning tree may fail to detect a switching loop in the network that causes broadcast storms  
B. VTP is allowed to propagate VLAN configuration information from switch to switch automatically.  
C. Root port choice and spanning tree recalculation are accelerated when a switch link goes down  
D. After spanning tree converges PortFast shuts down any port that receives BPDUs.

**Answer:** A

#### NEW QUESTION 57

When a floating static route is configured, which action ensures that the backup route is used when the primary route fails?



- A. The floating static route must have a higher administrative distance than the primary route so it is used as a backup
- B. The administrative distance must be higher on the primary route so that the backup route becomes secondary.
- C. The floating static route must have a lower administrative distance than the primary route so it is used as a backup
- D. The default-information originate command must be configured for the route to be installed into the routing table

**Answer:** A

**NEW QUESTION 60**

Which network allows devices to communicate without the need to access the Internet?

- A. 1729.0.0/16
- B. 172.28.0.0/16
- C. 192.0.0.0/8
- D. 209.165.201.0/24

**Answer:** D

**NEW QUESTION 65**

Drag drop the descriptions from the left onto the correct configuration-management technologies on the right.

fundamental configuration elements are stored in a manifest
uses TCP port 10002 for configuration push jobs
uses Ruby for fundamental configuration elements
uses SSH for remote device communication
uses TCP 8140 for communication
uses YAML for fundamental configuration elements

<b>Ansible</b>
<b>Chef</b>
<b>Puppet</b>

- A. Mastered
- B. Not Mastered

**Answer:** A

**Explanation:**



fundamental configuration elements are stored in a manifest

uses TCP port 10002 for configuration push jobs

uses Ruby for fundamental configuration elements

uses SSH for remote device communication

uses TCP 8140 for communication

uses YAML for fundamental configuration elements

Ansible

uses TCP port 10002 for configuration push jobs

uses TCP 8140 for communication

Chef

uses Ruby for fundamental configuration elements

uses SSH for remote device communication

Puppet

uses YAML for fundamental configuration elements

fundamental configuration elements are stored in a manifest

**NEW QUESTION 68**

Which mode must be used to configure EtherChannel between two switches without using a negotiation protocol?

- A. on
- B. auto
- C. active
- D. desirable

**Answer:** D

**NEW QUESTION 73**

A router running EIGRP has learned the same route from two different paths Which parameter does the router use to select the best path?

- A. cost
- B. administrative distance
- C. metric
- D. as-path

**Answer:** C

**NEW QUESTION 78**

R1 has learned route 192.168.12.0/24 via IS-IS. OSPF, RIP. and Internal EIGRP Under normal operating conditions, which routing protocol is installed in the routing table?

- A. IS-IS
- B. RIP
- C. Internal EIGRP
- D. OSPF

**Answer:** C

**NEW QUESTION 82**

Which statement correctly compares traditional networks and controller-based networks?

- A. Only traditional networks offer a centralized control plane
- B. Only traditional networks natively support centralized management
- C. Traditional and controller-based networks abstract policies from device configurations
- D. Only controller-based networks decouple the control plane and the data plane

**Answer:** C

**NEW QUESTION 85**

Drag and drop the WLAN components from the left onto the correct descriptions on the right.



access point
virtual interface
dynamic interface
service port
wireless LAN controller


- A. Mastered
- B. Not Mastered

Answer: A

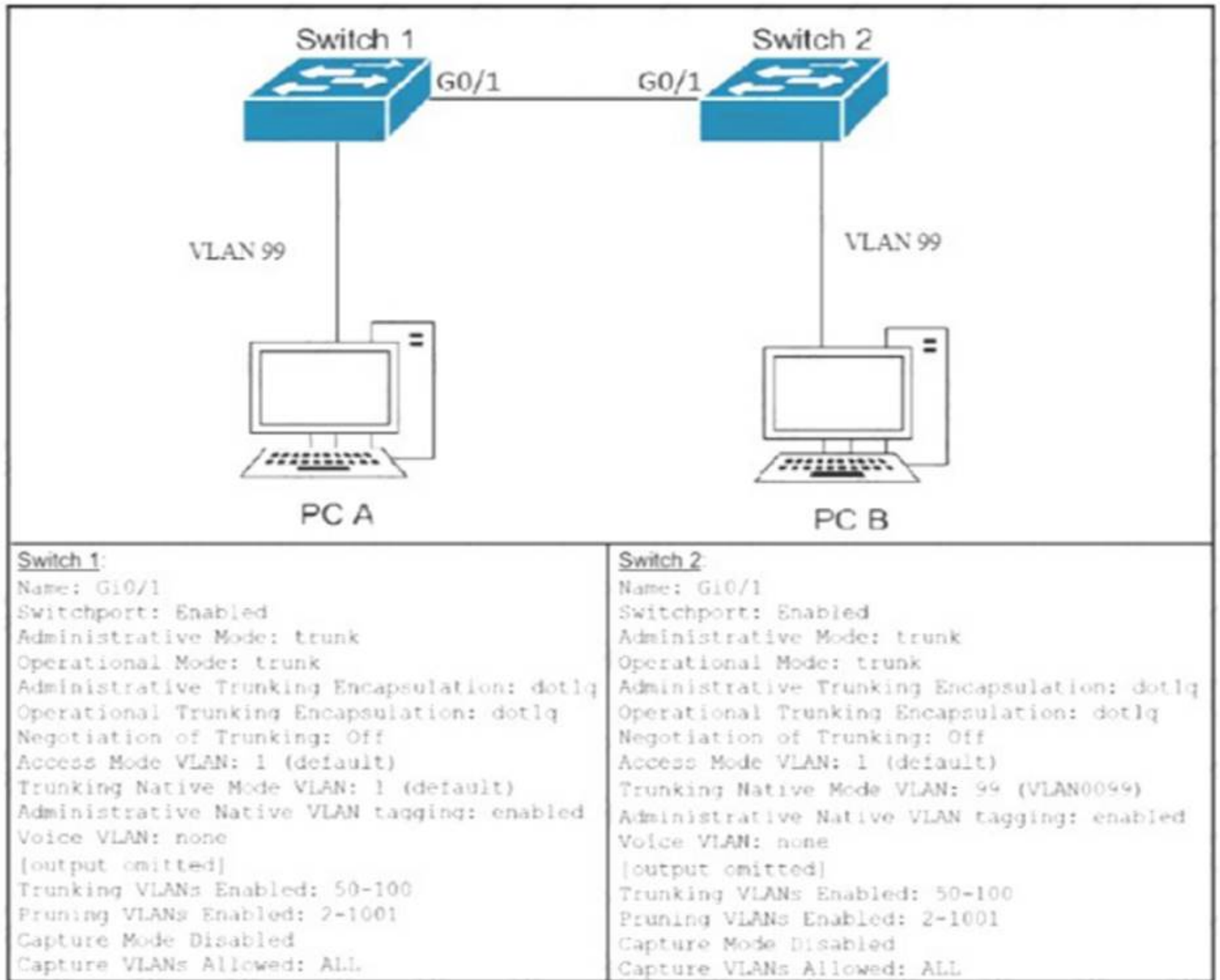
Explanation:

- 5:1
- 1:2
- 2:4
- 4:3
- 3:5

NEW QUESTION 86

Refer to the Exhibit.





After the switch configuration the ping test fails between PC A and PC B Based on the output for switch 1. which error must be corrected?

- A. There is a native VLAN mismatch
- B. Access mode is configured on the switch ports.
- C. The PCs are in the incorrect VLAN
- D. All VLANs are not enabled on the trunk

**Answer:** A

#### NEW QUESTION 90

Which statement about Link Aggregation when implemented on a Cisco Wireless LAN Controller is true?

- A. To pass client traffic two or more ports must be configured.
- B. The EtherChannel must be configured in "mode active"
- C. When enabled the WLC bandwidth drops to 500 Mbps
- D. One functional physical port is needed to pass client traffic

**Answer:** C

#### NEW QUESTION 91

Which API is used in controller-based architectures to interact with edge devices?

- A. overlay
- B. northbound
- C. underlay
- D. southbound

**Answer:** D

#### NEW QUESTION 93

.....



## Thank You for Trying Our Product

\* 100% Pass or Money Back

All our products come with a 90-day Money Back Guarantee.

\* One year free update

You can enjoy free update one year. 24x7 online support.

\* Trusted by Millions

We currently serve more than 30,000,000 customers.

\* Shop Securely

All transactions are protected by VeriSign!

**100% Pass Your 200-301 Exam with Our Prep Materials Via below:**

<https://www.certleader.com/200-301-dumps.html>