

## HPE6-A72 Dumps

### Aruba Certified Switching Associate Exam

<https://www.certleader.com/HPE6-A72-dumps.html>



**NEW QUESTION 1**

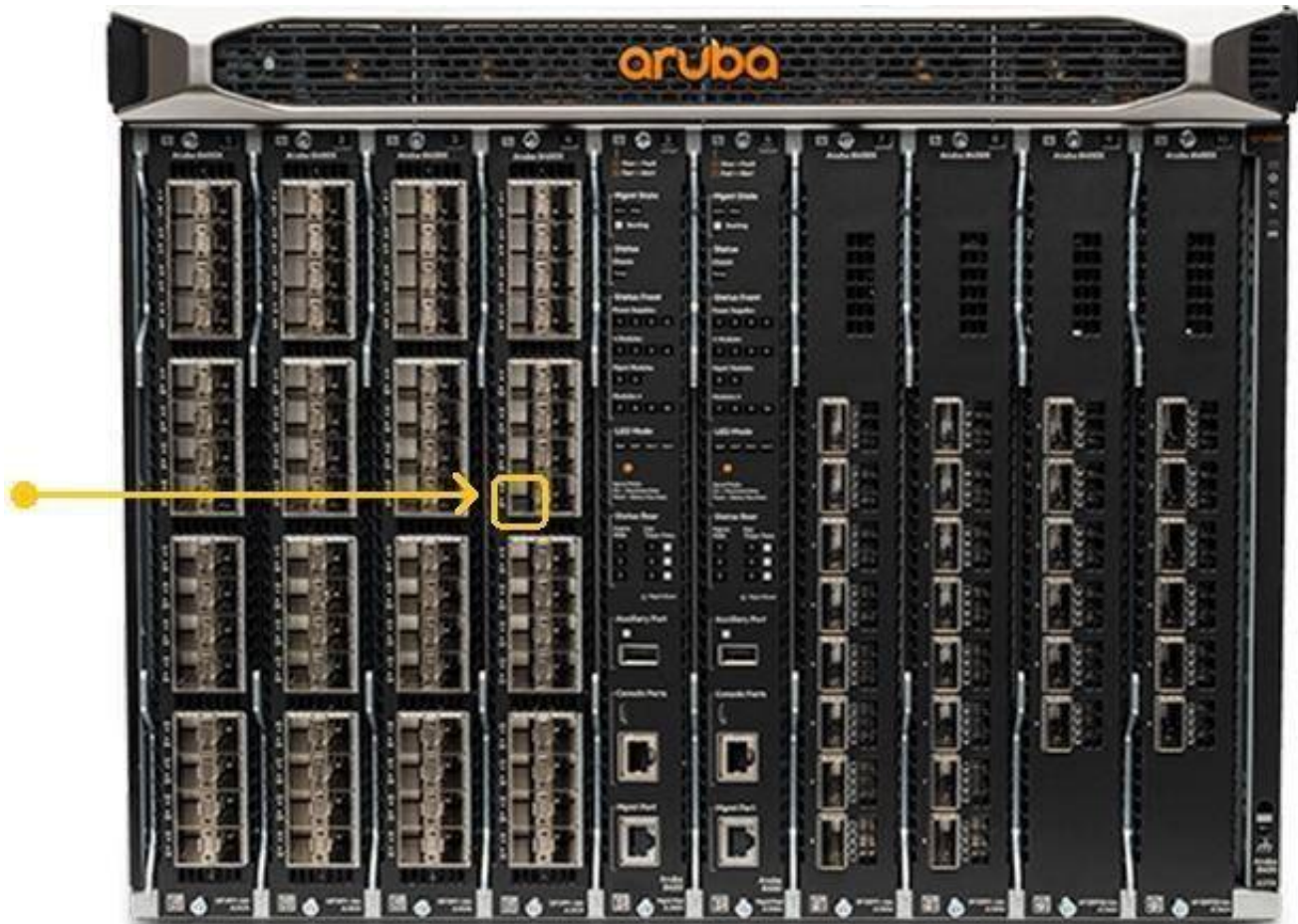
What is the correct description of a Multi- Layer Switch?

- A. a switch with Layer 3 routing capabilities but lacks any Layer 1 features as a consequence
- B. any switch that supports PoE, LLDP-MED and Flow Control
- C. has all the functionality of a Layer 2 switch and most of the functionality of a Layer 3 router
- D. multi-Layer refers specifically to using chassis switches with several line cards over stack port switches

**Answer: C**

**NEW QUESTION 2**

Refer to the exhibit.



The Aruba 8400 in the exhibit is member 2 of a VSX stack.

Which command will enter the interface sub configuration mode for the port, indicated by the orange square?

- A. 8400(config)# interface 2/4/15
- B. 8400(config)# interface 1/7/16
- C. 8400(config)# interface 1/4/15
- D. 8400(config)# interface 2/3/17

**Answer: A**

**NEW QUESTION 3**

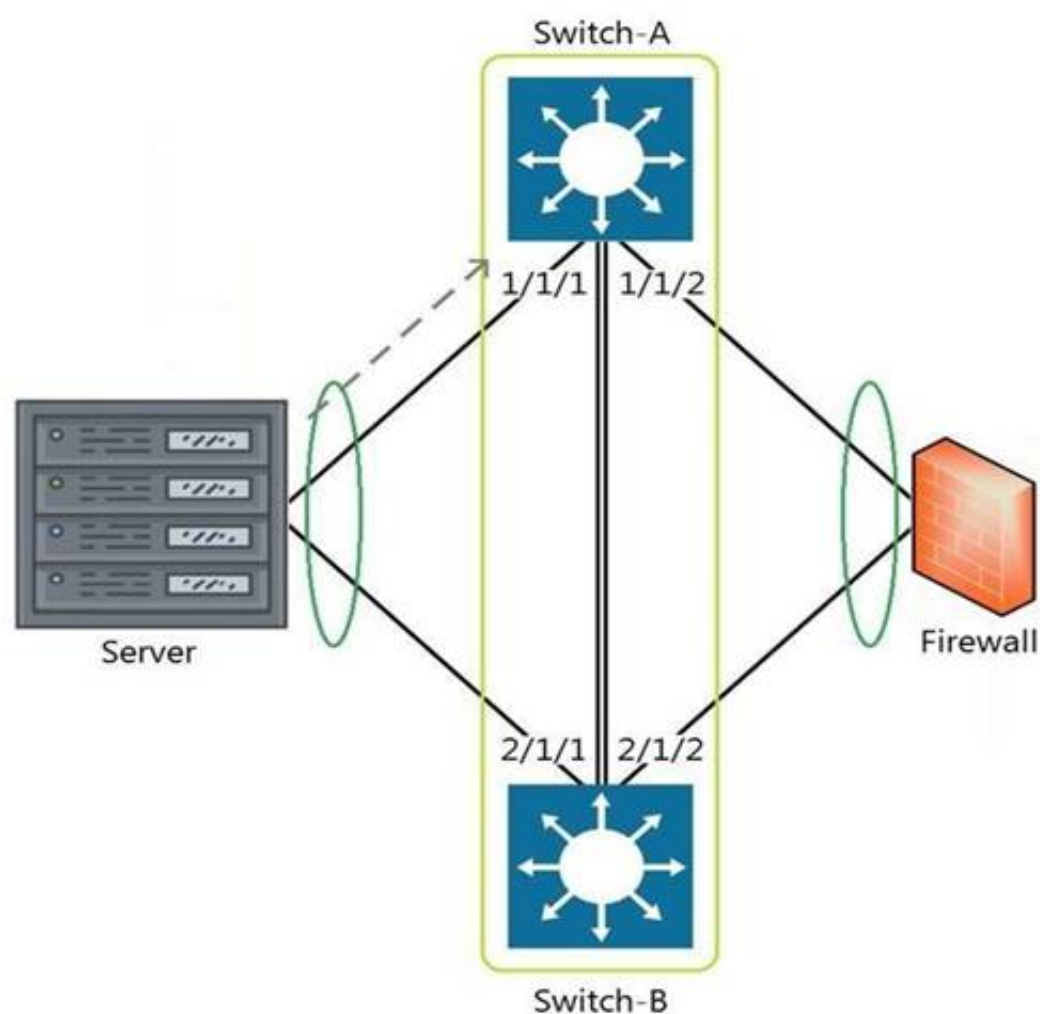
What are two features of the three-tier designs? (Choose two.)

- A. removes the distribution layer in favor of a spine-leaf design used in modern data center deployments
- B. adds a distribution layer to free up resources from the Core for improved performance and routing throughput
- C. a more scalable design over by leveraging a distribution layer to handle Layer 3 routing and access control in large deployments
- D. uses only Layer 2 access on the Access and the Core with Layer 3 routing and access control provided at the distribution layer
- E. is considered legacy by requiring a large flat layer-two broadcast domain from Core to Access and should be avoided

**Answer: BC**

**NEW QUESTION 4**

Refer to the exhibit.



The above scenario shows a packet from the Server destined for the Firewall. Switch-A and Switch-B are bundled as VSF stack. The LAG between the VSF stack and the firewall indicates a hash function to forward the packet on port 2/1/2. Which statement is true regarding how Switch-A will forward the packet?

- A. Switch-A will forward the packet on port 1/1/2. VSF will override the typical LAG hash function used for the physical interface selection.
- B. Switch-A will drop the packet
- C. Multi-Chassis lag to multi-chassis lag is not a supported feature of VSF.
- D. Switch-A will encapsulate the packet using GRE to forward to Switch-B in order for the packet to egress on port 2/1/2 per the hash function.
- E. Switch-A will forward the packet along the VSF link to Switch-B so that it will egress on port 2/1/2 per the hash function.

Answer: D

NEW QUESTION 5

DRAG DROP

Match each description to the correct term.

Term	Description
ASIC	receives and sends frames by using Application-Specific Integrated Circuits (ASICs)
Control Plane	switches packets faster than using software
Data Plane	determines packet forwarding using routing, switching, security, and flow optimization
Management Plane	handles switch monitoring

- A. Mastered
- B. Not Mastered

Answer: A

Explanation:



Term		Description
ASIC	Data Plane	receives and sends frames by using Application-Specific Integrated Circuits (ASICs)
Control Plane	ASIC	switches packets faster than using software
Data Plane	Control Plane	determines packet forwarding using routing, switching, security, and flow optimization
Management Plane	Management Plane	handles switch monitoring

#### NEW QUESTION 6

Your customer has 349 users in a two-story building.  
What are two benefits of a 2-Tier design? (Choose two.)

- A. Layer 2 and Layer 3 protocols run close to the endpoints to better implement ACL and QoS policy at the edge.
- B. Improved performance by offloading processing from the Access layer to the Core.
- C. Use of layer 2 switches at the access layer can process and route traffic from attached APs.
- D. Support for WAN/MPLS, Internet, and Data Center directly on the Collapsed core.
- E. Provides a more cost effective solution given that no additional switches are required for a third tier.

**Answer:** AE

#### NEW QUESTION 7

Which two options are the Layer 3 Routing protocols? (Choose two.)

- A. BGP
- B. LLDP
- C. OSPF
- D. MPLS
- E. 802.3ad

**Answer:** AC

#### NEW QUESTION 8

What are the commands to disable SSH and HTTPS services from the default VRF?

- A. Core-1(config)# no ssh server Core-1(config)# no https-server
- B. Core-1# no ssh server vrf default Core-1# no https-server vrf default
- C. Core-1(config)# no ssh server enable Core-1(config)# no https-server enable
- D. Core-1(config)# no ssh server vrf default Core-1(config)# no https-server vrf default

**Answer:** D

#### NEW QUESTION 9

Which statement is correct regarding powering an Aruba Access Point?

- A. PoE or PoE+ is only used with Ethernet that is carried over multi-mode fiber cabling.
- B. Using switchports for this reason is unnecessary, because Aruba Access Points typically use an AC to DC power adapter to draw power.
- C. PoE or PoE+ enabled switchports are rarely used given concerns about causing electrical interference, with the data also carried over Ethernet cabling.
- D. Most administrators use PoE or PoE+ enabled switchports to provide both Ethernet connectivity and power to the AP.

**Answer:** D

#### NEW QUESTION 10

What is a benefit of choosing a 3-Tier design with routing at the Aggregation layer?

- A. Better Core router performance by offloading processing
- B. Shifting endpoint access to the Aggregation layer from the Access layer
- C. Using access control lists (ACLs) at the Core to improve performance
- D. Connecting WAN/MPLS and Data center access to the Aggregation layer

**Answer:** A

#### NEW QUESTION 10

Refer to the exhibit.

```
T11-Access-2# show lldp configuration
```

```
LLDP Global Configuration
```

```
=====
```

```
LLDP Enabled           : Yes
LLDP Transmit Interval : 30
LLDP Hold Time Multiplier : 4
LLDP Transmit Delay Interval : 2
LLDP Reinit Time Interval : 2
```

```
TLVs Advertised
```

```
=====
```

```
Management Address
```

```
Port Description
```

```
Port VLAN-ID
```

```
System Capabilities
```

```
System Description
```

```
System Name
```

```
OUI
```

```
LLDP Port Configuration
```

```
=====
```

PORT	TX-ENABLED	RX-ENABLED
1/1/1	Yes	Yes
1/1/2	Yes	Yes
<--- output omitted --->		
1/1/27	Yes	Yes
1/1/28	Yes	Yes

What configuration is needed in order for "show LLDP configuration" to show this output?

- A. none; LLDP is enabled by default on Aruba switches
- B. configuring LLDP both globally and on the interfaces
- C. enabling LLDP on the interfaces only
- D. configuring LLDP globally only

**Answer:** A

#### NEW QUESTION 15

What is the process where a compute device converts logical data bits into the correct physical representation depending on the media?

- A. Demodulation
- B. Modulation
- C. Propagation
- D. Encapsulation

**Answer:** D

#### NEW QUESTION 18

What is an available command on an Aruba AOS-CX switch that would back up the secondary image to a secure remote repository?

- A. backup secondary sftp://admin@10.1.1.21/GL.10.04.0003.swi
- B. copy secondary sftp://admin@10.1.1.21/GL.10.04.0003.swi
- C. copy sftp://admin@10.1.1.21/GL.10.04.0003.swi secondary
- D. copy secondary tftp://admin@10.1.1.21/GL.10.04.0003.swi

**Answer:** B

#### NEW QUESTION 23

DRAG DROP

Match the term to the correct description.

Term		Description
BGP		used for creating backup routes by implementing a higher administrative distance
Floating Static Routes		a distance vector protocol
OSPFv2		an ipv4 link-state routing protocol that runs within an Autonomous System
OSPFv3		used to route traffic between Autonomous Systems
RIPv2		a routing protocol capable of routing IPv6 packets

- A. Mastered  
B. Not Mastered

**Answer:** A

**Explanation:**

Term		Description
BGP	Floating Static Routes	used for creating backup routes by implementing a higher administrative distance
Floating Static Routes	RIPv2	a distance vector protocol
OSPFv2	OSPFv2	an ipv4 link-state routing protocol that runs within an Autonomous System
OSPFv3	BGP	used to route traffic between Autonomous Systems
RIPv2	OSPFv3	a routing protocol capable of routing IPv6 packets

#### NEW QUESTION 25

Which two statements accurately describe the features of NetEdit? (Choose two.)

- A. NetEdit can be used to configure and validate any third-party device that supports SSH and REST access.  
B. NetEdit includes trial licensing for up to 10 nodes.  
C. NetEdit can perform configuration and compliance validation.  
D. NetEdit supports viewing and editing multiple devices using a single deployment plan.  
E. NetEdit can run on a mobile device using Android or Apple IOS.

**Answer:** CD

#### NEW QUESTION 29

What are two methods for remotely managing an Aruba AOS-CX switch? (Choose two.)

- A. SNMPv2c  
B. HTTPS  
C. USB-C console  
D. Telnet  
E. SSHCorrect

**Answer:** BE

#### NEW QUESTION 31

DRAG DROP

Match the available stacking feature to the correct AOS-CX switch model. Stacking features may be used more than once. Select and Place:

Stacking Feature

VSF

VSX

Answer Area

Stacking Feature	AOS-CX Switch Model
	6300M
	6300F
	8320
	8400
	6400

- A. Mastered
- B. Not Mastered

Answer: A

Explanation:

Stacking Feature

VSF

VSX

Answer Area

Stacking Feature	AOS-CX Switch Model
VSF	6300M
VSF	6300F
VSX	8320
VSX	8400
VSX	6400

NEW QUESTION 35

.....

## Thank You for Trying Our Product

\* 100% Pass or Money Back

All our products come with a 90-day Money Back Guarantee.

\* One year free update

You can enjoy free update one year. 24x7 online support.

\* Trusted by Millions

We currently serve more than 30,000,000 customers.

\* Shop Securely

All transactions are protected by VeriSign!

**100% Pass Your HPE6-A72 Exam with Our Prep Materials Via below:**

<https://www.certleader.com/HPE6-A72-dumps.html>