



# Cisco

## Exam Questions 300-430

Implementing Cisco Enterprise Wireless Networks (ENWLSI)

## About ExamBible

*[Your Partner of IT Exam](#)*

## Found in 1998

ExamBible is a company specialized on providing high quality IT exam practice study materials, especially Cisco CCNA, CCDA, CCNP, CCIE, Checkpoint CCSE, CompTIA A+, Network+ certification practice exams and so on. We guarantee that the candidates will not only pass any IT exam at the first attempt but also get profound understanding about the certificates they have got. There are so many alike companies in this industry, however, ExamBible has its unique advantages that other companies could not achieve.

## Our Advances

### \* 99.9% Uptime

All examinations will be up to date.

### \* 24/7 Quality Support

We will provide service round the clock.

### \* 100% Pass Rate

Our guarantee that you will pass the exam.

### \* Unique Gurantee

If you do not pass the exam at the first time, we will not only arrange FULL REFUND for you, but also provide you another exam of your claim, ABSOLUTELY FREE!

#### NEW QUESTION 1

An engineer configures the wireless LAN controller to perform 802.1x user authentication. Which configuration must be enabled to ensure that client devices can connect to the wireless, even when WLC cannot communicate with the RADIUS?

- A. pre-authentication
- B. local EAP
- C. authentication caching
- D. Cisco Centralized Key Management

**Answer: B**

#### NEW QUESTION 2

Which feature on the Cisco Wireless LAN Controller must be present to support dynamic VLAN mapping?

- A. FlexConnect ACL
- B. VLAN name override
- C. CCKM/OKC
- D. AAA override

**Answer: D**

#### NEW QUESTION 3

An engineer must use Cisco AVC on a Cisco WLC to prioritize Cisco IP cameras that use the wireless network. Which element do you configure in a rule?

- A. permit-ACL
- B. WMM required
- C. mark
- D. rate-limit

**Answer: C**

#### NEW QUESTION 4

What is the difference between PIM sparse mode and PIM dense mode?

- A. Sparse mode supports only one switch
- B. Dense mode supports multiswitch networks.
- C. Sparse mode flood
- D. Dense mode uses distribution trees.
- E. Sparse mode uses distribution tree
- F. Dense mode floods.
- G. Sparse mode supports multiswitch network
- H. Dense mode supports only one switch.

**Answer: C**

#### NEW QUESTION 5

A user is trying to connect to a wireless network that is configured for WPA2-Enterprise security using a corporate laptop. The CA certificate for the authentication server has been installed on the Trusted Root Certification Authorities store on the laptop. The user has been prompted to enter the credentials multiple times, but the authentication has not succeeded. What is causing the issue?

- A. There is an IEEE invalid 802.1X authentication policy on the authentication server.
- B. The user Active Directory account is locked out after several failed attempts.
- C. There is an invalid 802.1X authentication policy on the authenticator.
- D. The laptop has not received a valid IP address from the wireless controller.

**Answer: C**

#### NEW QUESTION 6

An engineer wants the wireless voice traffic class of service to be used to determine the queue order for packets received, and then have the differentiated services code point set to match when it is resent to another port on the switch. Which configuration is required in the network?

- A. Platinum QoS configured on the WLAN
- B. WMM set to required on the WLAN
- C. msl qos trust dscp configured on the controller switch port
- D. msl qos trust cos configured on the controller switch port

**Answer: C**

#### NEW QUESTION 7

The IT manager is asking the wireless team to get a report for all guest user associations during the past two weeks. In which two formats can Cisco Prime save this report? (Choose two.)

- A. CSV
- B. PDF
- C. XLS

- D. DOC
- E. plain text

**Answer:** AB

**Explanation:**

Reference: [https://www.cisco.com/c/en/us/td/docs/net\\_mgmt/prime/infrastructure/3-2/user/guide/bk\\_CiscoPrimeInfrastructure\\_3\\_2\\_0\\_UserGuide/bk\\_CiscoPrimeInfrastructure\\_3\\_2\\_0\\_UserGuide\\_chapter\\_01010.html](https://www.cisco.com/c/en/us/td/docs/net_mgmt/prime/infrastructure/3-2/user/guide/bk_CiscoPrimeInfrastructure_3_2_0_UserGuide/bk_CiscoPrimeInfrastructure_3_2_0_UserGuide_chapter_01010.html)

**NEW QUESTION 8**

Which two events are outcomes of a successful RF jamming attack? (Choose two.)

- A. disruption of WLAN services
- B. unauthentication association
- C. deauthentication broadcast
- D. deauthentication multicast
- E. physical damage to AP hardware

**Answer:** AE

**NEW QUESTION 9**

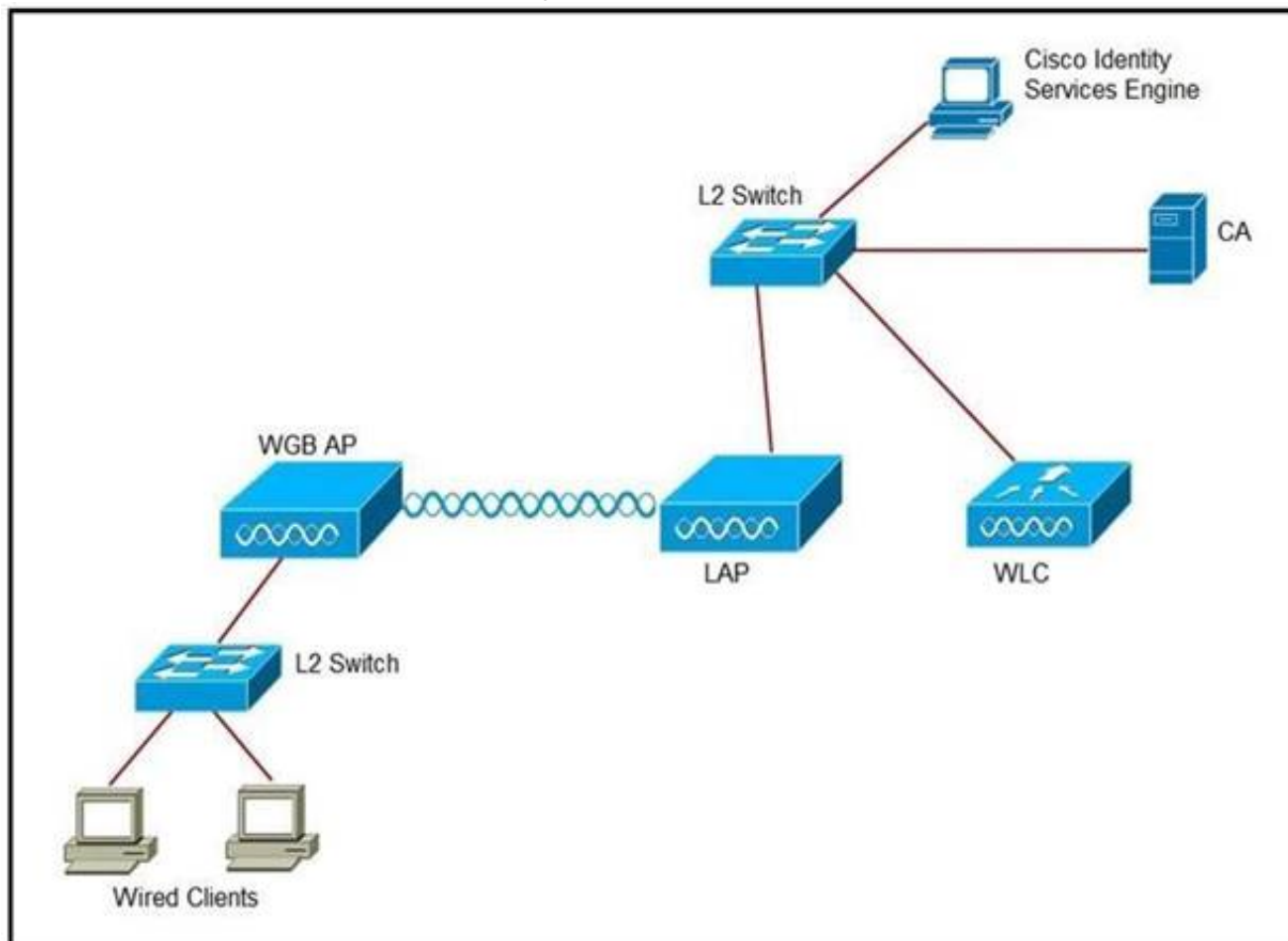
An engineer is performing a Cisco Hyperlocation accuracy test and executes the cmxloc start command on Cisco CMX. Which two parameters are relevant? (Choose two.)

- A. X, Y real location
- B. client description
- C. AP name
- D. client MAC address
- E. WLC IP address

**Answer:** AD

**NEW QUESTION 10**

Refer to the exhibit. An engineer must connect a fork lift via a WGB to a wireless network and must authenticate the WGB certificate against the RADIUS server. Which three steps are required for this configuration? (Choose three.)



- A. Configure the certificate, WLAN, and radio interface on WGB.
- B. Configure the certificate on the WLC.
- C. Configure WLAN to authenticate using ISE.
- D. Configure the access point with the root certificate from ISE.
- E. Configure WGB as a network device in ISE.
- F. Configure a policy on ISE to allow devices to connect that validate the certificate.

**Answer:** ACF

**NEW QUESTION 10**

On a branch office deployment, it has been noted that if the FlexConnect AP is in standalone mode and loses connection to the WLC, all clients are disconnected, and the SSID is no longer advertised. Considering that FlexConnect local switching is enabled, which setting is causing this behavior?

- A. ISE NAC is enabled

- B. 802.11r Fast Transition is enabled
- C. Client Exclusion is enabled
- D. FlexConnect Local Auth is disabled

**Answer:** D

#### NEW QUESTION 11

What is the maximum time range that can be viewed on the Cisco DNA Center issues and alarms page?

- A. 3 hours
- B. 24 hours
- C. 3 days
- D. 7 days

**Answer:** B

#### NEW QUESTION 13

An engineer configures a Cisco Aironet 600 Series OfficeExtend AP for a user who works remotely. What is configured on the Cisco WLC to allow the user to print a printer on his home network?

- A. split tunneling
- B. SE-connect
- C. FlexConnect
- D. AP failover priority

**Answer:** A

#### Explanation:

Reference: <https://www.cisco.com/c/en/us/support/docs/wireless/aironet-602-officeextend-access-point/117540-configure-splittunneloeap-00.html>

#### NEW QUESTION 16

An engineer is following the proper upgrade path to upgrade a Cisco AireOS WLC from version 7.3 to 8.9. Which two ACLs for Cisco CWA must be configured when upgrading from the specified codes? (Choose two.)

- A. Permit 0.0.0.0 0.0.0.0 UDP any any
- B. Permit 0.0.0.0 0.0.0.0 any DNS any
- C. Permit 0.0.0.0 0.0.0.0 UDP DNS any
- D. Permit 0.0.0.0 0.0.0.0 UDP any DNS
- E. Permit any any any

**Answer:** AD

#### NEW QUESTION 19

Refer to the exhibit.



No.	Time	Source	Destination	Protocol	Length	Info
1	0.000000	10.48.39.251	10.48.71.21	UDP	162	9999 → 2003 Len=120
2	0.003747	10.48.39.251	10.48.71.21	UDP	146	9999 → 2003 Len=104
3	1.087479	10.48.39.214	10.48.71.21	UDP	130	9999 → 2003 Len=88
4	2.733577	10.48.39.214	10.48.71.21	UDP	130	9999 → 2003 Len=88
5	2.999859	10.48.39.251	10.48.71.21	UDP	178	9999 → 2003 Len=136
6	3.001227	10.48.39.251	10.48.71.21	UDP	162	9999 → 2003 Len=120
7	4.355249	10.48.39.214	10.48.71.21	UDP	146	9999 → 2003 Len=104
8	5.999538	10.48.39.251	10.48.71.21	UDP	178	9999 → 2003 Len=136
9	6.000959	10.48.39.251	10.48.71.21	UDP	146	9999 → 2003 Len=104
10	8.999418	10.48.39.251	10.48.71.21	UDP	146	9999 → 2003 Len=104
11	9.000791	10.48.39.251	10.48.71.21	UDP	178	9999 → 2003 Len=136
12	9.262904	10.48.39.214	10.48.71.21	UDP	146	9999 → 2003 Len=104
13	10.894785	10.48.39.214	10.48.71.21	UDP	130	9999 → 2003 Len=88
14	11.995126	10.48.39.251	10.48.71.21	UDP	194	9999 → 2003 Len=152
15	11.999193	10.48.39.251	10.48.71.21	UDP	162	9999 → 2003 Len=120
16	14.994902	10.48.39.251	10.48.71.21	UDP	178	9999 → 2003 Len=136
17	14.996368	10.48.39.251	10.48.71.21	UDP	162	9999 → 2003 Len=120
18	17.994857	10.48.39.251	10.48.71.21	UDP	146	9999 → 2003 Len=104
19	17.996231	10.48.39.251	10.48.71.21	UDP	162	9999 → 2003 Len=120
20	18.102843	10.48.39.251	10.48.71.21	UDP	130	9999 → 2003 Len=88
21	21.098408	10.48.39.251	10.48.71.21	UDP	146	9999 → 2003 Len=104
22	21.099952	10.48.39.251	10.48.71.21	UDP	162	9999 → 2003 Len=120
23	24.098574	10.48.39.251	10.48.71.21	UDP	146	9999 → 2003 Len=104
24	24.099804	10.48.39.251	10.48.71.21	UDP	162	9999 → 2003 Len=120
25	27.098099	10.48.39.251	10.48.71.21	UDP	162	9999 → 2003 Len=120
26	27.099839	10.48.39.251	10.48.71.21	UDP	130	9999 → 2003 Len=88
27	28.880307	10.48.39.164	10.48.71.21	UDP	146	9999 → 2003 Len=104
28	28.881569	10.48.39.214	10.48.71.21	CAPP	146	CAPP MD5 Encrypted
29	30.094237	10.48.39.251	10.48.71.21	UDP	178	9999 → 2003 Len=136
30	30.097812	10.48.39.251	10.48.71.21	UDP	146	9999 → 2003 Len=104
31	30.513451	10.48.39.214	10.48.71.21	UDP	130	9999 → 2003 Len=88
32	30.515926	10.48.39.164	10.48.71.21	UDP	130	9999 → 2003 Len=88

> Frame 1: 162 bytes on wire (1296 bits), 162 bytes captured (1296 bits)  
 > Ethernet II, Src: CiscInc\_2a:c4:a3 (00:06:f6:2a:c4:a3), Dst: Vmware\_99:4e:19 (00:50:56:99:4e:19)  
 > Internet Protocol Version 4, Src: 10.48.39.251, Dst: 10.48.71.21  
 > User Datagram Protocol, Src Port: 9999 (9999), Dst Port: 2003 (2003)  
 v Data (120 bytes)  
 Data: ae 2f 44 f0 00 00 b4 5f ef 06 fd cb b7 6c 03 c7 ...  
 [Length: 120]

The image shows a packet capture that was taken at the CLI of the Cisco CMX server. It shows UDP traffic from the WLC coming into the server. What does the capture prove?

- A. The Cisco CMX server receives NetFlow data from the WLC.
- B. The Cisco CMX server receives NMSP traffic from the WLC.
- C. The Cisco CMX server receives SNMP traffic from the WLC.
- D. The Cisco CMX server receives Angle-of-Arrival data from the WLC.

**Answer:** D

#### NEW QUESTION 24

CMX Facebook Wi-Fi allows access to the network before authentication. Which two elements are available? (Choose two.)

- A. Allow HTTP traffic only before authentication and block all the traffic.
- B. Allow all the traffic before authentication and intercept HTTPS only.
- C. Allow HTTPs traffic only before authentication and block all other traffic.
- D. Allow all the traffic before authentication and intercept HTTP only.
- E. Allow SNMP traffic only before authentication and block all the traffic.

**Answer:** CD

#### Explanation:

Reference: [https://www.cisco.com/c/en/us/td/docs/wireless/mse/8-0/CMX\\_Connect\\_Engage\\_Visitor\\_Connect/Guide/Cisco\\_CMX\\_Connect\\_Engage\\_Config\\_Guide\\_VC/CMX\\_Facebook\\_Wi-Fi.html](https://www.cisco.com/c/en/us/td/docs/wireless/mse/8-0/CMX_Connect_Engage_Visitor_Connect/Guide/Cisco_CMX_Connect_Engage_Config_Guide_VC/CMX_Facebook_Wi-Fi.html)

#### NEW QUESTION 27

An engineer is implementing Cisco Identity-Based Networking on a Cisco AireOS controller. The engineer has two ACLs on the controller. The first ACL, named BASE\_ACL, is applied to the corporate\_clients interface on the WLC, which is used for all corporate clients. The second ACL, named HR\_ACL, is referenced by ISE in the Human Resources group policy. What is the resulting ACL when a Human Resources user connects?



- A. HR\_ACL appended with BASE\_ACL
- B. HR\_ACL only
- C. BASE\_ACL appended with HR\_ACL
- D. BASE\_ACL only

**Answer:** B

#### NEW QUESTION 28

Refer to the exhibit. An engineer is creating an ACL to restrict some traffic to the WLC CPU. Which selection must be made from the direction drop-down list?



**Access Control Lists > Rules > New**

Sequence	<input type="text"/>
Source	<input type="text" value="Any"/>
Destination	<input type="text" value="Any"/>
Protocol	<input type="text" value="Any"/>
DSCP	<input type="text" value="Any"/>
Direction	<input type="text" value="Any"/>
Action	<div><div>Any</div><div>Inbound</div><div>Outbound</div></div>

- A. It must be Inbound because traffic goes to the WLC.
- B. Packet direction has no significance; it is always Any.
- C. It must be Outbound because it is traffic that is generated from the WLC.
- D. To have the complete list of options, the CPU ACL must be created only by the CLI.

**Answer:** A

#### NEW QUESTION 31

Which component must be integrated with Cisco DNA Center to display the location of a client that is experiencing connectivity issues?

- A. Cisco Hyperlocation Module
- B. Wireless Intrusion Prevention System
- C. Cisco Connected Mobile Experiences
- D. Cisco Mobility Services Engine

**Answer:** A

#### NEW QUESTION 34

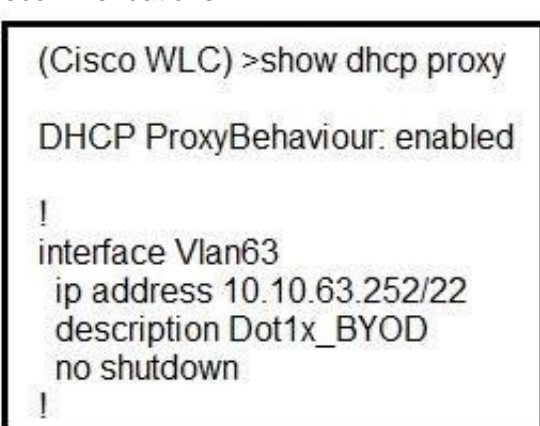
An engineer configured a Cisco AireOS controller with two TACACS+ servers. The engineer notices that when the primary TACACS+ server fails, the WLC starts using the secondary server as expected, but the WLC does not use the primary server again until the secondary server fails or the controller is rebooted. Which cause of this issue is true?

- A. Fallback is enabled
- B. Fallback is disabled
- C. DNS query is disabled
- D. DNS query is enabled

**Answer:** B

#### NEW QUESTION 39

Refer to the exhibit. A network administrator deploys the DHCP profiler service in two ISE servers: 10.3.10.101 and 10.3.10.102. All BYOD devices connecting to WLAN on VLAN63 have been incorrectly profiled and are assigned as unknown profiled endpoints. Which action efficiently rectifies the issue according to Cisco recommendations?



```
(Cisco WLC) >show dhcp proxy
DHCP ProxyBehaviour: enabled
!
interface Vlan63
 ip address 10.10.63.252/22
 description Dot1x_BYOD
 no shutdown
!
```

- A. Nothing needed to be added on the Cisco WLC or VLAN interfac

- B. The ISE configuration must be fixed.
- C. Disable DHCP proxy on the Cisco WLC.
- D. Disable DHCP proxy on the Cisco WLC and run the ip helper-address command under the VLAN interface to point to DHCP and the two ISE servers.
- E. Keep DHCP proxy enabled on the Cisco WLC and define helper-address under the VLAN interface to point to the two ISE servers.

**Answer:** C

#### NEW QUESTION 41

.....



## Relate Links

**100% Pass Your 300-430 Exam with ExamBible Prep Materials**

<https://www.exambible.com/300-430-exam/>

## Contact us

We are proud of our high-quality customer service, which serves you around the clock 24/7.

Viste - <https://www.exambible.com/>