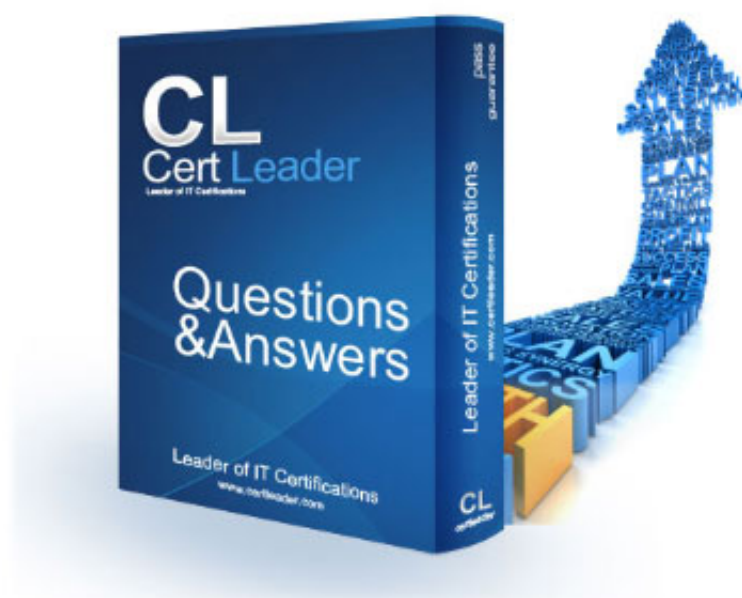


PRINCE2-Practitioner Dumps

PRINCE2 Practitioner exam

<https://www.certleader.com/PRINCE2-Practitioner-dumps.html>



NEW QUESTION 1

- (Exam Topic 1)

Project Scenario – Health and Safety Training Project:

ABC Company is a well-established training company that uses a standard model to develop training materials and deliver courses to customers.

ABC Company has commissioned a project in response to recent changes in government legislation relating to health and safety on construction sites. The project will deliver “capability to provide health and safety training”, including the materials needed for classroom-based training and e-learning. The expected benefits for construction companies include a reduction in lost days and legal costs due to accidents.

The e-learning course will be developed by a specialist external consultancy. The materials for

classroom-based training will be delivered by ABC Company’s development team. All course materials will be piloted before they are used. ABC Company will deliver training to its customers and also hopes to sell the course materials to other training companies as part of their operational business. ABC Company will use their own sales and marketing departments to promote the courses.

The legislation requires construction companies to comply with the new legislation within two years. The course materials and trainers have to be accredited by a government agency before courses can be delivered. ABC Company is planning to deliver pilot courses within five months of starting the project.

The ABC Company standard development model for new courses recommends the following stages: End of the Project scenario.

Additional Information:

The Chief Executive Officer (CEO) founded the company five years ago. Under her leadership, ABC Company has grown quickly into a successful training company. It delivers a range of accredited professional training.

The Finance Director is also a founder member of ABC Company and is responsible for authorizing budgets for the Operations and Development Teams. She authorizes all large contracts personally.

The Purchasing Manager reports to the Finance Director and is responsible for managing and monitoring supplier contracts.

The Operations Director is responsible for the delivery of all training and for the training development budget. His department organizes courses, venues and trainers. They work with the Product and the Sales teams to provide a comprehensive training schedule. ABC Company’s IT manager reports to the Operations Director.

The Business Development Director has recently been appointed to identify new training needs and propose new products. She will work with the Operations Director to ensure a cost-conscious approach and that appropriate development technologies are used for the health and safety course.

The Training Development Manager reports to the Business Development Director and is responsible for developing training materials and gaining accreditation, in accordance with the standard course development model. Course developers in his team have skills in a range of development technologies and are allocated to projects as needed.

The Training Delivery Manager, who reports to the Operations Director, is responsible for ensuring that internal and external trainers deliver ABC Company training courses to the required standard. He also checks course materials to ensure they are fit for purpose and of the required quality.

The Central Services Director has responsibility for corporate communications, facilities management and configuration management. He recently led a project to consolidate all company quality systems into one quality management system and set up a corporate quality department, now managed by the Corporate Quality Manager.

The Corporate Document Manager reports to the Central Services Director. She helped establish the company’s document management system and now operates it across the business. She manages a team of administrators and contracts staff when workload is high.

The Sales Director joined ABC Company two months ago and is keen to establish himself by suggesting new markets for the courses and material. All account managers and the marketing team report to him. They promote existing training courses to other training companies and existing customers.

End of the additional information.

ABC Company has a number of projects in progress. The executive of the Health and Safety Training Project is also a member of the project board for two other projects and is very busy. As a result, during this initiation stage, the executive has appointed another person to carry out both their business assurance and the role of change authority for minor and medium severity issues.

Is this appropriate, and why?

- A. Yes, because people with delegated project assurance roles may act as the change authority.
- B. Yes, because projects that are likely to have many changes should delegate the change authority.
- C. No, because the decision to have a change authority should be made before the project is authorized.
- D. No, because the project manager identifies the level of tailoring that is relevant for the project.

Answer: A

NEW QUESTION 2

- (Exam Topic 1)

Project Scenario – Health and Safety Training Project:

ABC Company is a well-established training company that uses a standard model to develop training materials and deliver courses to customers.

ABC Company has commissioned a project in response to recent changes in government legislation relating to health and safety on construction sites. The project will deliver “capability to provide health and safety training”, including the materials needed for classroom-based training and e-learning. The expected benefits for construction companies include a reduction in lost days and legal costs due to accidents.

The e-learning course will be developed by a specialist external consultancy. The materials for

classroom-based training will be delivered by ABC Company’s development team. All course materials will be piloted before they are used. ABC Company will deliver training to its customers and also hopes to sell the course materials to other training companies as part of their operational business. ABC Company will use their own sales and marketing departments to promote the courses.

The legislation requires construction companies to comply with the new legislation within two years. The course materials and trainers have to be accredited by a government agency before courses can be delivered. ABC Company is planning to deliver pilot courses within five months of starting the project.

The ABC Company standard development model for new courses recommends the following stages:

Stage 1	Initiation stage
Stage 2	Classroom-based training materials Marketing materials Training venue specifications Accredited classroom-based course
Stage 3	E-learning course Amended course booking procedures Marketed courses Planned pilot courses Updated corporate quality procedures Accredited e-learning course Accredited trainers
Stage 4	Delivered pilot courses Finalized materials Project product: Capability to provide health and safety training

End of the Project scenario. Additional Information:

The Chief Executive Officer (CEO) founded the company five years ago. Under her leadership, ABC Company has grown quickly into a successful training company. It delivers a range of accredited professional training.

The Finance Director is also a founder member of ABC Company and is responsible for authorizing budgets for the Operations and Development Teams. She authorizes all large contracts personally.

The Purchasing Manager reports to the Finance Director and is responsible for managing and monitoring supplier contracts.

The Operations Director is responsible for the delivery off all training and for the training development budget. His department organizes courses, venues and trainers. They work with the Product and the Sales teams to provide a comprehensive training schedule. ABC Company's IT manager reports to the Operations Director.

The Business Development Director has recently been appointed to identify new training needs and propose new products. She will work with the Operations. Director to ensure a cost-conscious approach and that appropriate development technologies are used for the health and safety course.

The Training Development Manager reports to the Business Development Director and is responsible for developing training materials and gaining accreditation, in accordance with the standard course development model. Course developers in his team have skills in a range of development technologies and are allocated to projects as needed.

The Training Delivery Manager, who reports to the Operations Director, is responsible for ensuring that internal and external trainers deliver ABC Company training courses to the required standard. He also checks course materials to ensure they are fit for purpose and of the required quality.

The Central Services Director has responsibility for corporate communications, facilities management and configuration management. He recently led a project to consolidate all company quality systems into one quality management system and set up a corporate quality department, now managed by the Corporate Quality Manager.

The Corporate Document Manager reports to the Central Services Director. She helped establish the company's document management system and now operates it across the business. She manages a team of administrators and contracts staff when workload is high.

The Sales Director joined ABC Company two months ago and is keen to establish himself by suggesting new markets for the courses and material. All account managers and the marketing team report to him. They promote existing training courses to other training companies and existing customers.

End of the additional information. STARTING UP A PROJECT

Here are three actions carried out during the 'starting up a project' process. As part of which activity (A-F) should each action occur?

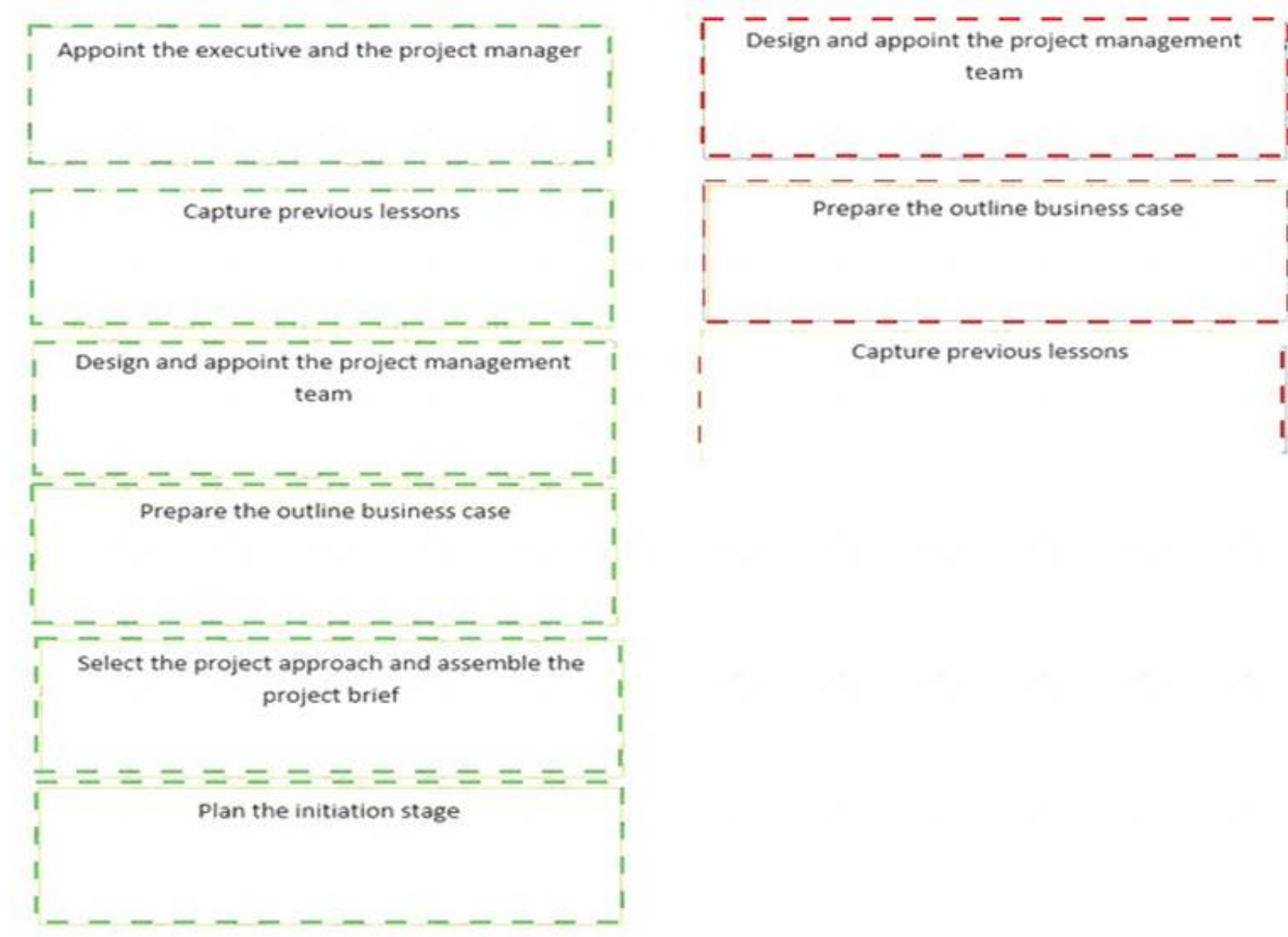
Choose only one activity for each action. Each activity can be used once, more than once, or not at all.

Appoint the executive and the project manager	Agree whether IT department of ABC Company has the skills and capacity to deliver the 'e-learning course' or whether it should be delivered by an external supplier.
Capture previous lessons	Discuss the need for the health and safety training, in order to identify who would be a suitable candidate to manage the Health and Safety Training Project.
Design and appoint the project management team	Define the reporting and control arrangements based on the lessons from the most recently completed training design and delivery project.
Prepare the outline business case	
Select the project approach and assemble the project brief	
Plan the initiation stage	

A. Mastered
B. Not Mastered

Answer: A

Explanation:



NEW QUESTION 3

- (Exam Topic 1)

Project Scenario – Health and Safety Training Project:

ABC Company is a well-established training company that uses a standard model to develop training materials and deliver courses to customers.

ABC Company has commissioned a project in response to recent changes in government legislation relating to health and safety on construction sites. The project will deliver “capability to provide health and safety training”, including the materials needed for classroom-based training and e-learning. The expected benefits for construction companies include a reduction in lost days and legal costs due to accidents.

The e-learning course will be developed by a specialist external consultancy. The materials for

classroom-based training will be delivered by ABC Company’s development team. All course materials will be piloted before they are used. ABC Company will deliver training to its customers and also hopes to sell the course materials to other training companies as part of their operational business. ABC Company will use their own sales and marketing departments to promote the courses.

The legislation requires construction companies to comply with the new legislation within two years. The course materials and trainers have to be accredited by a government agency before courses can be delivered. ABC Company is planning to deliver pilot courses within five months of starting the project.

The ABC Company standard development model for new courses recommends the following stages:

Stage 1	Initiation stage
Stage 2	Classroom-based training materials Marketing materials Training venue specifications Accredited classroom-based course
Stage 3	E-learning course Amended course booking procedures Marketed courses Planned pilot courses Updated corporate quality procedures Accredited e-learning course Accredited trainers
Stage 4	Delivered pilot courses Finalized materials Project product: Capability to provide health and safety training

End of the Project scenario. Additional Information:

The Chief Executive Officer (CEO) founded the company five years ago. Under her leadership, ABC Company has grown quickly into a successful training company. It delivers a range of accredited professional training.

The Finance Director is also a founder member of ABC Company and is responsible for authorizing budgets for the Operations and Development Teams. She authorizes all large contracts personally.

The Purchasing Manager reports to the Finance Director and is responsible for managing and monitoring supplier contracts.

The Operations Director is responsible for the delivery off all training and for the training development budget. His department organizes courses, venues and trainers. They work with the Product and the Sales teams to provide a comprehensive training schedule. ABC Company’s IT manager reports to the Operations Director.

The Business Development Director has recently been appointed to identify new training needs and propose new products. She will work with the Operations. Director to ensure a cost-conscious approach and that appropriate development technologies are used for the health and safety course.

The Training Development Manager reports to the Business Development Director and is responsible for developing training materials and gaining accreditation, in accordance with the standard course development model. Course developers in his team have skills in a range of development technologies and are allocated to projects as needed.

The Training Delivery Manager, who reports to the Operations Director, is responsible for ensuring that internal and external trainers deliver ABC Company training courses to the required standard. He also checks course materials to ensure they are fit for purpose and of the required quality.

The Central Services Director has responsibility for corporate communications, facilities management and configuration management. He recently led a project to consolidate all company quality systems into one quality management system and set up a corporate quality department, now managed by the Corporate Quality Manager.

The Corporate Document Manager reports to the Central Services Director. She helped establish the company's document management system and now operates it across the business. She manages a team of administrators and contracts staff when workload is high.

The Sales Director joined ABC Company two months ago and is keen to establish himself by suggesting new markets for the courses and material. All account managers and the marketing team report to him. They promote existing training courses to other training companies and existing customers.

End of the additional information. DIRECTING A PROJECT

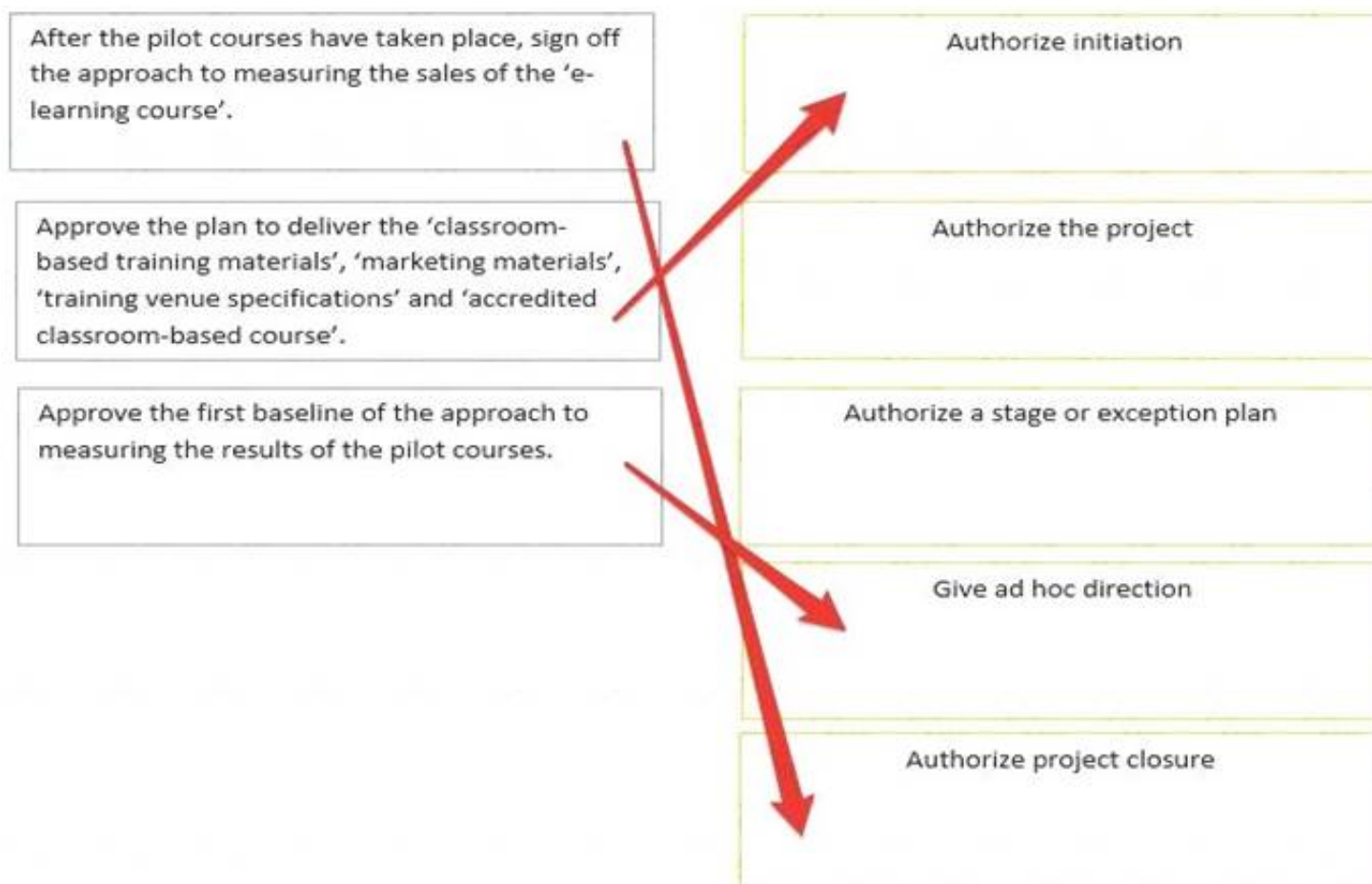
Here are three actions that are carried out as part of the 'directing a project' process. During which activity (A-E) should they be carried out? Choose only one activity for each action. Each activity can be used once, more than once, or not at all.

Authorize initiation	After the pilot courses have taken place, sign off the approach to measuring the sales of the 'e-learning course'.
Authorize the project	Approve the plan to deliver the 'classroom-based training materials', 'marketing materials', 'training venue specifications' and 'accredited classroom-based course'.
Authorize a stage or exception plan	Approve the first baseline of the approach to measuring the results of the pilot courses.
Give ad hoc direction	
Authorize project closure	

- A. Mastered
- B. Not Mastered

Answer: A

Explanation:



NEW QUESTION 4

- (Exam Topic 1)

Project Scenario – Health and Safety Training Project:

ABC Company is a well-established training company that uses a standard model to develop training materials and deliver courses to customers.

ABC Company has commissioned a project in response to recent changes in government legislation relating to health and safety on construction sites. The project will deliver “capability to provide health and safety training”, including the materials needed for classroom-based training and e-learning. The expected benefits for construction companies include a reduction in lost days and legal costs due to accidents.

The e-learning course will be developed by a specialist external consultancy. The materials for

classroom-based training will be delivered by ABC Company’s development team. All course materials will be piloted before they are used. ABC Company will deliver training to its customers and also hopes to sell the course materials to other training companies as part of their operational business. ABC Company will use their own sales and marketing departments to promote the courses.

The legislation requires construction companies to comply with the new legislation within two years. The course materials and trainers have to be accredited by a government agency before courses can be delivered. ABC Company is planning to deliver pilot courses within five months of starting the project.

The ABC Company standard development model for new courses recommends the following stages:

Stage 1	Initiation stage
Stage 2	Classroom-based training materials Marketing materials Training venue specifications Accredited classroom-based course
Stage 3	E-learning course Amended course booking procedures Marketed courses Planned pilot courses Updated corporate quality procedures Accredited e-learning course Accredited trainers
Stage 4	Delivered pilot courses Finalized materials Project product: Capability to provide health and safety training

End of the Project scenario. Additional Information:

The Chief Executive Officer (CEO) founded the company five years ago. Under her leadership, ABC Company has grown quickly into a successful training company. It delivers a range of accredited professional training.

The Finance Director is also a founder member of ABC Company and is responsible for authorizing budgets for the Operations and Development Teams. She authorizes all large contracts personally.

The Purchasing Manager reports to the Finance Director and is responsible for managing and monitoring supplier contracts.

The Operations Director is responsible for the delivery off all training and for the training development budget. His department organizes courses, venues and trainers. They work with the Product and the Sales teams to provide a comprehensive training schedule. ABC Company’s IT manager reports to the Operations Director.

The Business Development Director has recently been appointed to identify new training needs and propose new products. She will work with the Operations. Director to ensure a cost-conscious approach and that appropriate development technologies are used for the health and safety course.

The Training Development Manager reports to the Business Development Director and is responsible for developing training materials and gaining accreditation, in accordance with the standard course development model. Course developers in his team have skills in a range of development technologies and are allocated to projects as needed.

The Training Delivery Manager, who reports to the Operations Director, is responsible for ensuring that internal and external trainers deliver ABC Company training courses to the required standard. He also checks course materials to ensure they are fit for purpose and of the required quality.

The Central Services Director has responsibility for corporate communications, facilities management and configuration management. He recently led a project to consolidate all company quality systems into one quality management system and set up a corporate quality department, now managed by the Corporate Quality Manager.

The Corporate Document Manager reports to the Central Services Director. She helped establish the company's document management system and now operates it across the business. She manages a team of administrators and contracts staff when workload is high.

The Sales Director joined ABC Company two months ago and is keen to establish himself by suggesting new markets for the courses and material. All account managers and the marketing team report to him. They promote existing training courses to other training companies and existing customers.

End of the additional information. PLANS

Here are three events to managing plans for the project.

In which management product (A-E) should the result of each event be recorded?

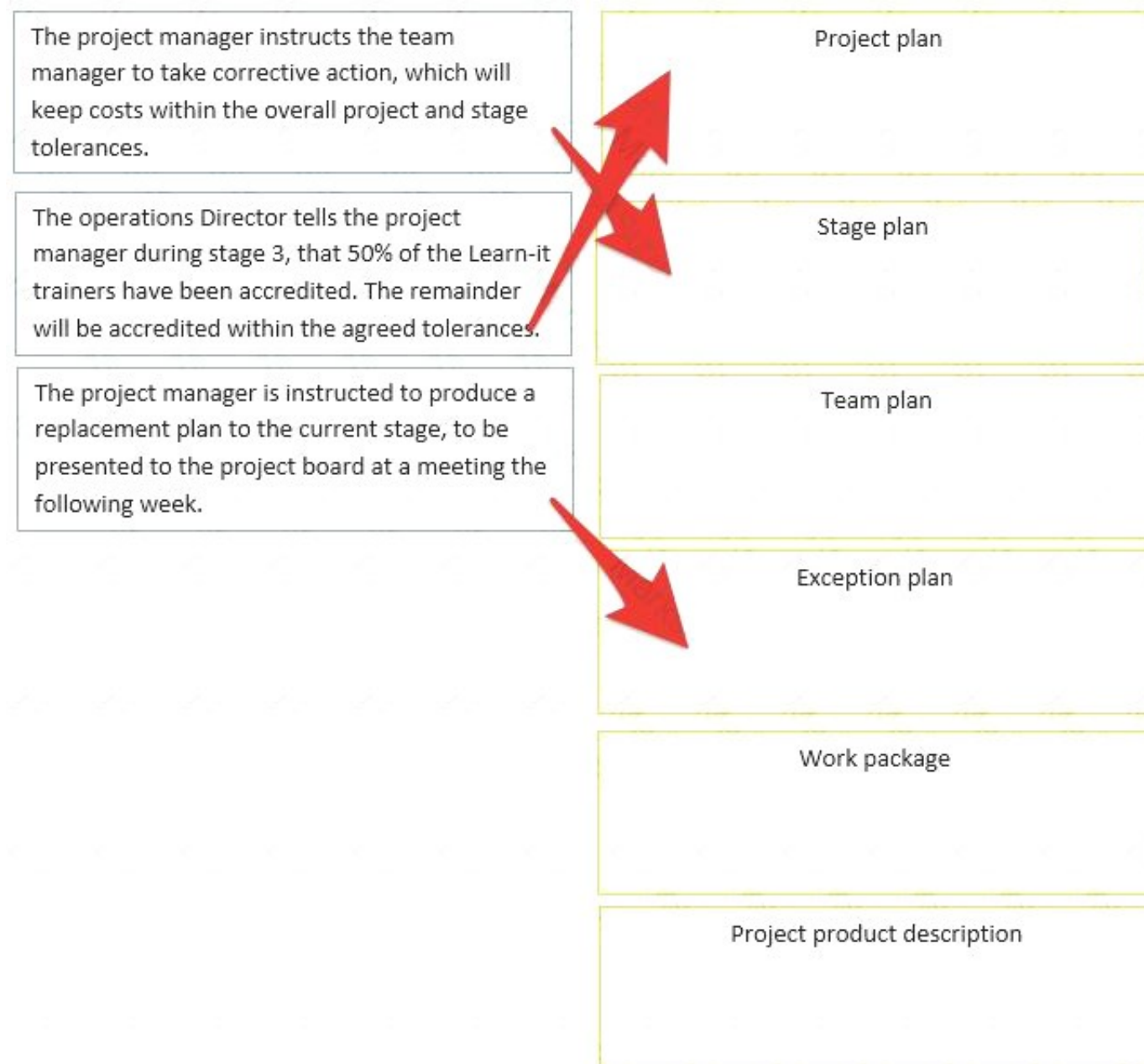
Choose only one product for each event. Each product can be used once, more than once or not at all.

Project plan	The project manager instructs the team manager to take corrective action, which will keep costs within the overall project and stage tolerances.
Stage plan	The operations Director tells the project manager during stage 3, that 50% of the Learn-it trainers have been accredited. The remainder will be accredited within the agreed tolerances.
Team plan	The project manager is instructed to produce a replacement plan to the current stage, to be presented to the project board at a meeting the following week.
Exception plan	
Work package	
Project product description	

- A. Mastered
- B. Not Mastered

Answer: A

Explanation:



NEW QUESTION 5

- (Exam Topic 1)

Project Scenario – Health and Safety Training Project:

ABC Company is a well-established training company that uses a standard model to develop training materials and deliver courses to customers.

ABC Company has commissioned a project in response to recent changes in government legislation relating to health and safety on construction sites. The project will deliver “capability to provide health and safety training”, including the materials needed for classroom-based training and e-learning. The expected benefits for construction companies include a reduction in lost days and legal costs due to accidents.

The e-learning course will be developed by a specialist external consultancy. The materials for

classroom-based training will be delivered by ABC Company’s development team. All course materials will be piloted before they are used. ABC Company will deliver training to its customers and also hopes to sell the course materials to other training companies as part of their operational business. ABC Company will use their own sales and marketing departments to promote the courses.

The legislation requires construction companies to comply with the new legislation within two years. The course materials and trainers have to be accredited by a government agency before courses can be delivered. ABC Company is planning to deliver pilot courses within five months of starting the project.

The ABC Company standard development model for new courses recommends the following stages:

Stage 1	Initiation stage
Stage 2	Classroom-based training materials Marketing materials Training venue specifications Accredited classroom-based course
Stage 3	E-learning course Amended course booking procedures Marketed courses Planned pilot courses Updated corporate quality procedures Accredited e-learning course Accredited trainers
Stage 4	Delivered pilot courses Finalized materials Project product: Capability to provide health and safety training

End of the Project scenario. Additional Information:

The Chief Executive Officer (CEO) founded the company five years ago. Under her leadership, ABC Company has grown quickly into a successful training company. It delivers a range of accredited professional training.

The Finance Director is also a founder member of ABC Company and is responsible for authorizing budgets for the Operations and Development Teams. She authorizes all large contracts personally.

The Purchasing Manager reports to the Finance Director and is responsible for managing and monitoring supplier contracts.

The Operations Director is responsible for the delivery of all training and for the training development budget. His department organizes courses, venues and trainers. They work with the Product and the Sales teams to provide a comprehensive training schedule. ABC Company’s IT manager reports to the Operations Director.

The Business Development Director has recently been appointed to identify new training needs and propose new products. She will work with the Operations.

Director to ensure a cost-conscious approach and that appropriate development technologies are used for the health and safety course.

The Training Development Manager reports to the Business Development Director and is responsible for developing training materials and gaining accreditation, in accordance with the standard course development model. Course developers in his team have skills in a range of development technologies and are allocated to projects as needed.

The Training Delivery Manager, who reports to the Operations Director, is responsible for ensuring that internal and external trainers deliver ABC Company training courses to the required standard. He also checks course materials to ensure they are fit for purpose and of the required quality.

The Central Services Director has responsibility for corporate communications, facilities management and configuration management. He recently led a project to consolidate all company quality systems into one quality management system and set up a corporate quality department, now managed by the Corporate Quality Manager.

The Corporate Document Manager reports to the Central Services Director. She helped establish the company's document management system and now operates it across the business. She manages a team of administrators and contracts staff when workload is high.

The Sales Director joined ABC Company two months ago and is keen to establish himself by suggesting new markets for the courses and material. All account managers and the marketing team report to him. They promote existing training courses to other training companies and existing customers.

End of the additional information.

The project is in stage 2. The project manager is reviewing stage status and has collected the checkpoint reports from the team managers. These show that the products are being completed on schedule. However, project support has raised issues that quality reviews have not been completed as agreed. The project manager reports in the highlight report that the stage is progressing well.

Is this appropriate, and why?

- A. Yes, because the highlight report is a summary of the information in the checkpoint reports.
- B. Yes, because the highlight report is used to provide the project board with stage and project progress.
- C. No, because the project manager should have recorded the cause of the delay to the quality reviews in the lessons log.
- D. No, because the issues raised by project support are a cause for concern and should be reflected in the highlight report.

Answer: D

NEW QUESTION 6

- (Exam Topic 1)

Project Scenario – Health and Safety Training Project:

ABC Company is a well-established training company that uses a standard model to develop training materials and deliver courses to customers.

ABC Company has commissioned a project in response to recent changes in government legislation relating to health and safety on construction sites. The project will deliver "capability to provide health and safety training", including the materials needed for classroom-based training and e-learning. The expected benefits for construction companies include a reduction in lost days and legal costs due to accidents.

The e-learning course will be developed by a specialist external consultancy. The materials for classroom-based training will be delivered by ABC Company's development team. All course materials will be piloted before they are used. ABC Company will deliver training to its customers and also hopes to sell the course materials to other training companies as part of their operational business. ABC Company will use their own sales and marketing departments to promote the courses.

The legislation requires construction companies to comply with the new legislation within two years. The course materials and trainers have to be accredited by a government agency before courses can be delivered. ABC Company is planning to deliver pilot courses within five months of starting the project.

The ABC Company standard development model for new courses recommends the following stages:

Stage 1	Initiation stage
Stage 2	Classroom-based training materials Marketing materials Training venue specifications Accredited classroom-based course
Stage 3	E-learning course Amended course booking procedures Marketed courses Planned pilot courses Updated corporate quality procedures Accredited e-learning course Accredited trainers
Stage 4	Delivered pilot courses Finalized materials Project product: Capability to provide health and safety training

End of the Project scenario. Additional Information:

The Chief Executive Officer (CEO) founded the company five years ago. Under her leadership, ABC Company has grown quickly into a successful training company. It delivers a range of accredited professional training.

The Finance Director is also a founder member of ABC Company and is responsible for authorizing budgets for the Operations and Development Teams. She authorizes all large contracts personally.

The Purchasing Manager reports to the Finance Director and is responsible for managing and monitoring supplier contracts.

The Operations Director is responsible for the delivery off all training and for the training development budget. His department organizes courses, venues and trainers. They work with the Product and the Sales teams to provide a comprehensive training schedule. ABC Company's IT manager reports to the Operations Director.

The Business Development Director has recently been appointed to identify new training needs and propose new products. She will work with the Operations Director to ensure a cost-conscious approach and that appropriate development technologies are used for the health and safety course.

The Training Development Manager reports to the Business Development Director and is responsible for developing training materials and gaining accreditation, in accordance with the standard course development model. Course developers in his team have skills in a range of development technologies and are allocated to projects as needed.

The Training Delivery Manager, who reports to the Operations Director, is responsible for ensuring that internal and external trainers deliver ABC Company training courses to the required standard. He also checks course materials to ensure they are fit for purpose and of the required quality.

The Central Services Director has responsibility for corporate communications, facilities management and configuration management. He recently led a project to consolidate all company quality systems into one quality management system and set up a corporate quality department, now managed by the Corporate Quality Manager.

The Corporate Document Manager reports to the Central Services Director. She helped establish the company's document management system and now operates it across the business. She manages a team of administrators and contracts staff when workload is high.

The Sales Director joined ABC Company two months ago and is keen to establish himself by suggesting new markets for the courses and material. All account managers and the marketing team report to him. They promote existing training courses to other training companies and existing customers.

End of the additional information. CONTROLLING A STAGE

Here are three activities that take place during the ‘controlling a stage’ process. Which role (A-F) should carry out each activity? Choose only one role for each action. Each role can be used once, more than once, or not at all.

Executive	Enter the delivery dates for the ‘marketing materials’ work package into the stage plan.
Senior user	Check the accuracy of the information in the highlight report which confirms that the ‘classroom-based materials’ and ‘marketing materials’ will be delivered to time and cost tolerances.
Senior supplier	Report on progress towards delivering the ‘training venue specifications’.
Project manager	
Team manager	
Project assurance	

- A. Mastered
- B. Not Mastered

Answer: A

Explanation:

Executive	Senior supplier
Senior user	Project manager
Senior supplier	Team manager
Project manager	
Team manager	
Project assurance	

NEW QUESTION 7

- (Exam Topic 1)

Project Scenario – Health and Safety Training Project:

ABC Company is a well-established training company that uses a standard model to develop training materials and deliver courses to customers. ABC Company has commissioned a project in response to recent changes in government legislation relating to health and safety on construction sites. The project will deliver “capability to provide health and safety training”, including the materials needed for classroom-based training and e-learning. The expected benefits for construction companies include a reduction in lost days and legal costs due to accidents. The e-learning course will be developed by a specialist external consultancy. The materials for classroom-based training will be delivered by ABC Company’s development team. All course materials will be piloted before they are used. ABC Company will deliver training to its customers and also hopes to sell the course materials to other training companies as part of their operational business. ABC Company will use their own sales and marketing departments to promote the courses. The legislation requires construction companies to comply with the new legislation within two years. The course materials and trainers have to be accredited by a government agency before courses can be delivered. ABC Company is planning to deliver pilot courses within five months of starting the project. The ABC Company standard development model for new courses recommends the following stages:

Stage 1	Initiation stage
Stage 2	Classroom-based training materials Marketing materials Training venue specifications Accredited classroom-based course
Stage 3	E-learning course Amended course booking procedures Marketed courses Planned pilot courses Updated corporate quality procedures Accredited e-learning course Accredited trainers
Stage 4	Delivered pilot courses Finalized materials Project product: Capability to provide health and safety training

End of the Project scenario. Additional Information:

The Chief Executive Officer (CEO) founded the company five years ago. Under her leadership, ABC

Company has grown quickly into a successful training company. It delivers a range of accredited professional training.

The Finance Director is also a founder member of ABC Company and is responsible for authorizing budgets for the Operations and Development Teams. She authorizes all large contracts personally.

The Purchasing Manager reports to the Finance Director and is responsible for managing and monitoring supplier contracts.

The Operations Director is responsible for the delivery off all training and for the training development budget. His department organizes courses, venues and trainers. They work with the Product and the Sales teams to provide a comprehensive training schedule. ABC Company’s IT manager reports to the Operations Director.

The Business Development Director has recently been appointed to identify new training needs and propose new products. She will work with the Operations. Director to ensure a cost-conscious approach and that appropriate development technologies are used for the health and safety course.

The Training Development Manager reports to the Business Development Director and is responsible for developing training materials and gaining accreditation, in accordance with the standard course development model. Course developers in his team have skills in a range of development technologies and are allocated to projects as needed.

The Training Delivery Manager, who reports to the Operations Director, is responsible for ensuring that internal and external trainers deliver ABC Company training courses to the required standard. He also checks course materials to ensure they are fit for purpose and of the required quality.

The Central Services Director has responsibility for corporate communications, facilities management and configuration management. He recently led a project to consolidate all company quality systems into one quality management system and set up a corporate quality department, now managed by the Corporate Quality Manager.

The Corporate Document Manager reports to the Central Services Director. She helped establish the company’s document management system and now operates it across the business. She manages a team of administrators and contracts staff when workload is high.

The Sales Director joined ABC Company two months ago and is keen to establish himself by suggesting new markets for the courses and material. All account managers and the marketing team report to him. They promote existing training courses to other training companies and existing customers.

End of the additional information.

ABC Company has a standard course development model with four defined stages that the company manages using PRINCE2. The project manager for the Health and Safety Training Project has recommended the stage 2 of the standard model be split into two separate stages. As a result, there will now be five management stages in the project.

Is this an appropriate application of the ‘tailor to suit the project’ principle, and why?

- A. Yes, because the project manager can adapt or combine PRINCE2 process to suit the project.
- B. Yes, because the standard course development structure should be tailored to suit the project.
- C. No, because a simple project should have no more than two management stages.
- D. No, because the standard course development structure should be applied to the project.

Answer: B

NEW QUESTION 8

- (Exam Topic 1)

Project Scenario – Health and Safety Training Project:

ABC Company is a well-established training company that uses a standard model to develop training materials and deliver courses to customers.

ABC Company has commissioned a project in response to recent changes in government legislation relating to health and safety on construction sites. The project will deliver “capability to provide health and safety training”, including the materials needed for classroom-based training and e-learning. The expected benefits for construction companies include a reduction in lost days and legal costs due to accidents.

The e-learning course will be developed by a specialist external consultancy. The materials for

classroom-based training will be delivered by ABC Company’s development team. All course materials will be piloted before they are used. ABC Company will deliver training to its customers and also hopes to sell the course materials to other training companies as part of their operational business. ABC Company will use their own sales and marketing departments to promote the courses.

The legislation requires construction companies to comply with the new legislation within two years. The course materials and trainers have to be accredited by a government agency before courses can be delivered. ABC Company is planning to deliver pilot courses within five months of starting the project.

The ABC Company standard development model for new courses recommends the following stages:

Stage 1	Initiation stage
Stage 2	Classroom-based training materials Marketing materials Training venue specifications Accredited classroom-based course
Stage 3	E-learning course Amended course booking procedures Marketed courses Planned pilot courses Updated corporate quality procedures Accredited e-learning course Accredited trainers
Stage 4	Delivered pilot courses Finalized materials Project product: Capability to provide health and safety training

End of the Project scenario. Additional Information:

The Chief Executive Officer (CEO) founded the company five years ago. Under her leadership, ABC Company has grown quickly into a successful training company. It delivers a range of accredited professional training.

The Finance Director is also a founder member of ABC Company and is responsible for authorizing budgets for the Operations and Development Teams. She authorizes all large contracts personally.

The Purchasing Manager reports to the Finance Director and is responsible for managing and monitoring supplier contracts.

The Operations Director is responsible for the delivery of all training and for the training development budget. His department organizes courses, venues and trainers. They work with the Product and the Sales teams to provide a comprehensive training schedule. ABC Company's IT manager reports to the Operations Director.

The Business Development Director has recently been appointed to identify new training needs and propose new products. She will work with the Operations Director to ensure a cost-conscious approach and that appropriate development technologies are used for the health and safety course.

The Training Development Manager reports to the Business Development Director and is responsible for developing training materials and gaining accreditation, in accordance with the standard course development model. Course developers in his team have skills in a range of development technologies and are allocated to projects as needed.

The Training Delivery Manager, who reports to the Operations Director, is responsible for ensuring that internal and external trainers deliver ABC Company training courses to the required standard. He also checks course materials to ensure they are fit for purpose and of the required quality.

The Central Services Director has responsibility for corporate communications, facilities management and configuration management. He recently led a project to consolidate all company quality systems into one quality management system and set up a corporate quality department, now managed by the Corporate Quality Manager.

The Corporate Document Manager reports to the Central Services Director. She helped establish the company's document management system and now operates it across the business. She manages a team of administrators and contracts staff when workload is high.

The Sales Director joined ABC Company two months ago and is keen to establish himself by suggesting new markets for the courses and material. All account managers and the marketing team report to him. They promote existing training courses to other training companies and existing customers.

End of the additional information. MANAGING A STAGE BOUNDARY

The ABC Company trainers have been accredited and the course booking procedures have been amended. The 'managing a stage boundary' process is taking place at the end of stage 3.

Which activity should occur during the 'update the business case' activity?

- A. Update the overall plan with the time and cost taken to develop the 'e-learning course' and 'amended course booking procedures'
- B. Break the 'planned pilot courses' down into component products in order to identify the work required to deliver them.
- C. Review whether the possible sales of the training course to external companies are likely to cover the project costs.
- D. Review whether a new team manager should be appointed to lead the delivery of the pilot courses during stage 4.

Answer: A

NEW QUESTION 9

- (Exam Topic 1)

Project Scenario – Health and Safety Training Project:

ABC Company is a well-established training company that uses a standard model to develop training materials and deliver courses to customers.

ABC Company has commissioned a project in response to recent changes in government legislation relating to health and safety on construction sites. The project will deliver "capability to provide health and safety training", including the materials needed for classroom-based training and e-learning. The expected benefits for construction companies include a reduction in lost days and legal costs due to accidents.

The e-learning course will be developed by a specialist external consultancy. The materials for

classroom-based training will be delivered by ABC Company's development team. All course materials will be piloted before they are used. ABC Company will deliver training to its customers and also hopes to sell the course materials to other training companies as part of their operational business. ABC Company will use their own sales and marketing departments to promote the courses.

The legislation requires construction companies to comply with the new legislation within two years. The course materials and trainers have to be accredited by a government agency before courses can be delivered. ABC Company is planning to deliver pilot courses within five months of starting the project.

The ABC Company standard development model for new courses recommends the following stages:

Stage 1	Initiation stage
Stage 2	Classroom-based training materials Marketing materials Training venue specifications Accredited classroom-based course
Stage 3	E-learning course Amended course booking procedures Marketed courses Planned pilot courses Updated corporate quality procedures Accredited e-learning course Accredited trainers
Stage 4	Delivered pilot courses Finalized materials Project product: Capability to provide health and safety training

End of the Project scenario. Additional Information:

The Chief Executive Officer (CEO) founded the company five years ago. Under her leadership, ABC Company has grown quickly into a successful training company. It delivers a range of accredited professional training.

The Finance Director is also a founder member of ABC Company and is responsible for authorizing budgets for the Operations and Development Teams. She authorizes all large contracts personally.

The Purchasing Manager reports to the Finance Director and is responsible for managing and monitoring supplier contracts.

The Operations Director is responsible for the delivery of all training and for the training development budget. His department organizes courses, venues and trainers. They work with the Product and the Sales teams to provide a comprehensive training schedule. ABC Company's IT manager reports to the Operations Director.

The Business Development Director has recently been appointed to identify new training needs and propose new products. She will work with the Operations Director to ensure a cost-conscious approach and that appropriate development technologies are used for the health and safety course.

The Training Development Manager reports to the Business Development Director and is responsible for developing training materials and gaining accreditation, in accordance with the standard course development model. Course developers in his team have skills in a range of development technologies and are allocated to projects as needed.

The Training Delivery Manager, who reports to the Operations Director, is responsible for ensuring that internal and external trainers deliver ABC Company training courses to the required standard. He also checks course materials to ensure they are fit for purpose and of the required quality.

The Central Services Director has responsibility for corporate communications, facilities management and configuration management. He recently led a project to consolidate all company quality systems into one quality management system and set up a corporate quality department, now managed by the Corporate Quality Manager.

The Corporate Document Manager reports to the Central Services Director. She helped establish the company's document management system and now operates it across the business. She manages a team of administrators and contracts staff when workload is high.

The Sales Director joined ABC Company two months ago and is keen to establish himself by suggesting new markets for the courses and material. All account managers and the marketing team report to him. They promote existing training courses to other training companies and existing customers.

End of the additional information.

All the products that are due in stage 3 have been completed, apart from the 'updated corporate quality procedures'. The work has been completed but the product has not yet been approved. The executive has been told that it will be signed off before the end of the project. In response to an exception report, the executive has instructed the project manager to plan to obtain approval of the product in stage 4.

Is this appropriate application of the report management stage end' activity, and why?

- A. Yes, because approval of the product can be carried forward into the next stage, with authority from the project board.
- B. Yes, because the completion of the product in the next stage is a follow-on action recommendation for stage 4.
- C. No, because approval of the products was planned for stage 3 and must be completed before the stage ends.
- D. No, because a project-level exception plan is required before approval of the quality procedures can be delayed.

Answer: A

NEW QUESTION 10

- (Exam Topic 1)

Project Scenario – Health and Safety Training Project:

ABC Company is a well-established training company that uses a standard model to develop training materials and deliver courses to customers.

ABC Company has commissioned a project in response to recent changes in government legislation relating to health and safety on construction sites. The project will deliver "capability to provide health and safety training", including the materials needed for classroom-based training and e-learning. The expected benefits for construction companies include a reduction in lost days and legal costs due to accidents.

The e-learning course will be developed by a specialist external consultancy. The materials for

classroom-based training will be delivered by ABC Company's development team. All course materials will be piloted before they are used. ABC Company will deliver training to its customers and also hopes to sell the course materials to other training companies as part of their operational business. ABC Company will use their own sales and marketing departments to promote the courses.

The legislation requires construction companies to comply with the new legislation within two years. The course materials and trainers have to be accredited by a government agency before courses can be delivered. ABC Company is planning to deliver pilot courses within five months of starting the project.

The ABC Company standard development model for new courses recommends the following stages:

Stage 1	Initiation stage
Stage 2	Classroom-based training materials Marketing materials Training venue specifications Accredited classroom-based course
Stage 3	E-learning course Amended course booking procedures Marketed courses Planned pilot courses Updated corporate quality procedures Accredited e-learning course Accredited trainers
Stage 4	Delivered pilot courses Finalized materials Project product: Capability to provide health and safety training

End of the Project scenario. Additional Information:

The Chief Executive Officer (CEO) founded the company five years ago. Under her leadership, ABC Company has grown quickly into a successful training company. It delivers a range of accredited professional training.

The Finance Director is also a founder member of ABC Company and is responsible for authorizing budgets for the Operations and Development Teams. She authorizes all large contracts personally.

The Purchasing Manager reports to the Finance Director and is responsible for managing and monitoring supplier contracts.

The Operations Director is responsible for the delivery off all training and for the training development budget. His department organizes courses, venues and trainers. They work with the Product and the Sales teams to provide a comprehensive training schedule. ABC Company's IT manager reports to the Operations Director.

The Business Development Director has recently been appointed to identify new training needs and propose new products. She will work with the Operations. Director to ensure a cost-conscious approach and that appropriate development technologies are used for the health and safety course.

The Training Development Manager reports to the Business Development Director and is responsible for developing training materials and gaining accreditation, in accordance with the standard course development model. Course developers in his team have skills in a range of development technologies and are allocated to projects as needed.

The Training Delivery Manager, who reports to the Operations Director, is responsible for ensuring that internal and external trainers deliver ABC Company training courses to the required standard. He also checks course materials to ensure they are fit for purpose and of the required quality.

The Central Services Director has responsibility for corporate communications, facilities management and configuration management. He recently led a project to consolidate all company quality systems into one quality management system and set up a corporate quality department, now managed by the Corporate Quality Manager.

The Corporate Document Manager reports to the Central Services Director. She helped establish the company's document management system and now operates it across the business. She manages a team of administrators and contracts staff when workload is high.

The Sales Director joined ABC Company two months ago and is keen to establish himself by suggesting new markets for the courses and material. All account managers and the marketing team report to him. They promote existing training courses to other training companies and existing customers.

End of the additional information.

The project is at the start of stage 3, and there will be six teams working on product delivery. In order to exercise control, the project manager has asked each team to submit a detailed team plan for approval. The external team manager for the 'e-learning course' has agreed to submit a summary to the project manager, but

will submit the detailed team plan to the senior supplier to review and approve. Is the team manager's response appropriate, and why?

- A. Yes, because a supplier may want to keep the details of the specialist work confidential.
- B. Yes, because team plans are mandatory on a project of this size and complexity.
- C. No, because the project manager needs detailed plans to manage the work of several teams.
- D. No, because the team plan must be submitted to project assurance to check it is viable.

Answer: C

NEW QUESTION 10

- (Exam Topic 1)

Project Scenario – Health and Safety Training Project:

ABC Company is a well-established training company that uses a standard model to develop training materials and deliver courses to customers.

ABC Company has commissioned a project in response to recent changes in government legislation relating to health and safety on construction sites. The project will deliver "capability to provide health and safety training", including the materials needed for classroom-based training and e-learning. The expected benefits for construction companies include a reduction in lost days and legal costs due to accidents.

The e-learning course will be developed by a specialist external consultancy. The materials for

classroom-based training will be delivered by ABC Company's development team. All course materials will be piloted before they are used. ABC Company will deliver training to its customers and also hopes to sell the course materials to other training companies as part of their operational business. ABC Company will use their own sales and marketing departments to promote the courses.

The legislation requires construction companies to comply with the new legislation within two years. The course materials and trainers have to be accredited by a government agency before courses can be delivered. ABC Company is planning to deliver pilot courses within five months of starting the project.

The ABC Company standard development model for new courses recommends the following stages:

Stage 1	Initiation stage
Stage 2	Classroom-based training materials Marketing materials Training venue specifications Accredited classroom-based course
Stage 3	E-learning course Amended course booking procedures Marketed courses Planned pilot courses Updated corporate quality procedures Accredited e-learning course Accredited trainers
Stage 4	Delivered pilot courses Finalized materials Project product: Capability to provide health and safety training

End of the Project scenario. Additional Information:

The Chief Executive Officer (CEO) founded the company five years ago. Under her leadership, ABC Company has grown quickly into a successful training company. It delivers a range of accredited professional training.

The Finance Director is also a founder member of ABC Company and is responsible for authorizing budgets for the Operations and Development Teams. She authorizes all large contracts personally.

The Purchasing Manager reports to the Finance Director and is responsible for managing and monitoring supplier contracts.

The Operations Director is responsible for the delivery off all training and for the training development budget. His department organizes courses, venues and trainers. They work with the Product and the Sales teams to provide a comprehensive training schedule. ABC Company's IT manager reports to the Operations Director.

The Business Development Director has recently been appointed to identify new training needs and propose new products. She will work with the Operations. Director to ensure a cost-conscious approach and that appropriate development technologies are used for the health and safety course.

The Training Development Manager reports to the Business Development Director and is responsible for developing training materials and gaining accreditation, in accordance with the standard course development model. Course developers in his team have skills in a range of development technologies and are allocated to projects as needed.

The Training Delivery Manager, who reports to the Operations Director, is responsible for ensuring that internal and external trainers deliver ABC Company training courses to the required standard. He also checks course materials to ensure they are fit for purpose and of the required quality.

The Central Services Director has responsibility for corporate communications, facilities management and configuration management. He recently led a project to consolidate all company quality systems into one quality management system and set up a corporate quality department, now managed by the Corporate Quality Manager.

The Corporate Document Manager reports to the Central Services Director. She helped establish the company's document management system and now operates it across the business. She manages a team of administrators and contracts staff when workload is high.

The Sales Director joined ABC Company two months ago and is keen to establish himself by suggesting new markets for the courses and material. All account managers and the marketing team report to him. They promote existing training courses to other training companies and existing customers.

End of the additional information. QUALITY

Teams have been set up to develop different parts of the 'classroom-based training materials'. Here are three activities related to managing quality.

Which role (A-F) should carry them out?

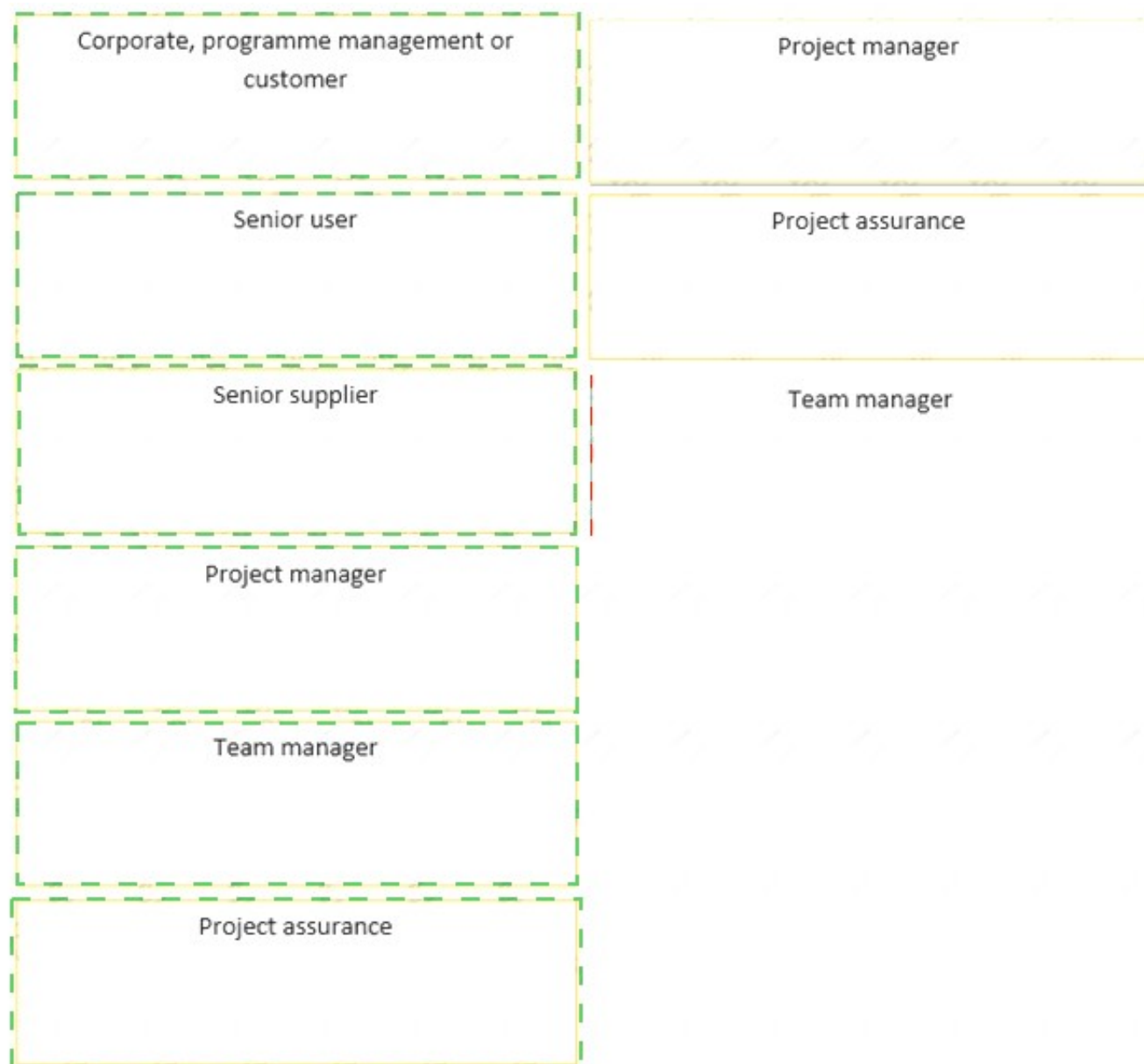
Choose only one for each activity. Each role can be used once, more than once, or not at all.

Corporate, programme management or customer	When a completed work package is received, check the quality register to see that the quality methods specified in the work package have been implemented.
Senior user	Provide confidence that the accreditation of trainers will not be delayed by a failure to follow the quality procedures that have been agreed with the Training Delivery Manager.
Senior supplier	Sign off the quality criteria for the 'classroom-based training materials'
Project manager	
Team manager	
Project assurance	

- A. Mastered
B. Not Mastered

Answer: A

Explanation:



NEW QUESTION 12

- (Exam Topic 2)

Scenario

Additional Information

During the initiation stage the Project Manager met with the Marketing Director to find out more about the requirements of the promotional calendar and recorded the following notes:

There has been a reduction in the order numbers at the MNO Manufacturing due in part to the increased marketing activities of its competitors. 10% of customers have not re-ordered in this financial year and staff morale is poor. A number of skilled staff have left as a result and replacement staff have not been recruited due to the reduced operation. If the project is successful, a recruitment campaign will be required to fill the existing staff vacancies and there may be a requirement for additional staff. Operational costs are likely to increase because skilled staff are expensive and difficult to find.

In financial terms, there were a total of 1,500 orders in the last financial year, each with an average profit of £2k. The Marketing department believes that sending a promotional calendar to our current and prospective customers would increase orders by at least 10% with a minimum of 10 further orders from the list of prospective customers within 12 months from the date of distribution.

The Marketing Director will be funding the project from the business marketing budget. She believes that the effect of a good company image portrayed by a successful calendar would last into a second year. She has forecast the same increase in orders for a second year and predicts that the annual employee satisfaction survey will show a measurable improvement in staff morale.

A number of alternatives were explored, including:

- 20% discount for all repeat customers - not cost-effective and very short term
- A promotional calendar as a free Christmas gift - would target current and prospective customers and the benefits would last into a second year
- A series of television and press advertisements was too expensive
- A direct mail shot to all customers - benefit would be short term
- Creation of an internet website - would not suit all customers

The calendar is seen as the favored option, as long as the company's competitors do not increase their marketing activity. Whilst the Marketing department wants a very high quality, glossy product, the project management team must be aware of the cost this will incur.

Using the Project Scenario and the additional Information provided for this question In the Scenario Booklet, answer the following question.

Which 2 statements should be recorded under the Reasons heading?

- A. The Marketing department believes that sending a promotional calendar to current and prospective customers will increase orders by at least 10%.
B. 10% of customers have not re-ordered in this financial year.
C. 1,500 orders are expected, each with an average profit of £2k.
D. The Marketing department believes that the effect of a good company image, portrayed by a successful calendar, will last into a second year.
E. MNO Manufacturing is experiencing a fall in orders due in part to the increased marketing activities of its competitors.

Answer: BE

NEW QUESTION 13

- (Exam Topic 2)

Scenario

Additional Information

During the initiation stage the Project Manager met with the Marketing Director to find out more about the requirements of the promotional calendar and recorded the following notes:

There has been a reduction in the order numbers at the MNO Manufacturing due in part to the increased marketing activities of its competitors. 10% of customers have not re-ordered in this financial year and staff morale is poor. A number of skilled staff have left as a result and replacement staff have not been recruited due to the reduced operation. If the project is successful, a recruitment campaign will be required to fill the existing staff vacancies and there may be a requirement for additional staff. Operational costs are likely to increase because skilled staff are expensive and difficult to find.

In financial terms, there were a total of 1,500 orders in the last financial year, each with an average profit of

£2k. The Marketing department believes that sending a promotional calendar to our current and prospective customers would increase orders by at least 10% with a minimum of 10 further orders from the list of prospective customers within 12 months from the date of distribution.

The Marketing Director will be funding the project from the business marketing budget. She believes that the effect of a good company image portrayed by a successful calendar would last into a second year. She has forecast the same increase in orders for a second year and predicts that the annual employee satisfaction survey will show a measurable improvement in staff morale.

A number of alternatives were explored, including:

- 20% discount for all repeat customers - not cost-effective and very short term
- A promotional calendar as a free Christmas gift - would target current and prospective customers and the benefits would last into a second year
- A series of television and press advertisements was too expensive
- A direct mail shot to all customers - benefit would be short term
- Creation of an internet website - would not suit all customers

The calendar is seen as the favored option, as long as the company's competitors do not increase their marketing activity. Whilst the Marketing department wants a very high quality, glossy product, the project management team must be aware of the cost this will incur.

Using the Project Scenario and the additional Information provided for this question In the Scenario Booklet, answer the following question.

Lines A to E in the table below consist of an assertion statement and a reason statement. For each line identify the appropriate option, from options A to E, that applies. Each option can be used once, more than once or not at all.

	Assertion	True False	Reason	
A	If the calendar solution is changed there should be a review of, and possible changes to, the Business Case.	True False	The Business Case includes options for the delivery of the chosen solution.	True False
B	The Business Case will no longer be viable if the prepared calendar pack is only available for printing in the first week of December.	True False	The Business Case is no longer viable if stage tolerances are exceeded during project.	True False
C	The fact that the project's aim is to try to counter the fall in orders should be documented in the project Brief.	True False	The outline Business Case contains the reasons why the project is needed and forms part of the Project Brief.	True False
D	The Benefits Review Plan should include an assessment in 12 months time of the increase in orders.	True False	The Benefits Review Plan contains details of benefits reviews to be conducted during the project.	True False
E	The expected improvement in staff morale should NOT be recorded as a benefit in the Business Case.	True False	Only those benefits that can be measured in financial terms should be defined in the Business Case.	True False

A. Mastered

B. Not Mastered

Answer: A

Explanation:

	Assertion	True False	Reason	
A	If the calendar solution is changed there should be a review of, and possible changes to, the Business Case.	<input checked="" type="checkbox"/> True <input type="checkbox"/> False	The Business Case includes options for the delivery of the chosen solution.	<input checked="" type="checkbox"/> True <input type="checkbox"/> False
B	The Business Case will no longer be viable if the prepared calendar pack is only available for printing in the first week of December.	<input type="checkbox"/> True <input checked="" type="checkbox"/> False	The Business Case is no longer viable if stage tolerances are exceeded during project.	<input type="checkbox"/> True <input checked="" type="checkbox"/> False
C	The fact that the project's aim is to try to counter the fall in orders should be documented in the project Brief.	<input checked="" type="checkbox"/> True <input type="checkbox"/> False	The outline Business Case contains the reasons why the project is needed and forms part of the Project Brief.	<input checked="" type="checkbox"/> True <input type="checkbox"/> False
D	The Benefits Review Plan should include an assessment in 12 months time of the increase in orders.	<input checked="" type="checkbox"/> True <input type="checkbox"/> False	The Benefits Review Plan contains details of benefits reviews to be conducted during the project.	<input checked="" type="checkbox"/> True <input type="checkbox"/> False
E	The expected improvement in staff morale should NOT be recorded as a benefit in the Business Case.	<input type="checkbox"/> True <input checked="" type="checkbox"/> False	Only those benefits that can be measured in financial terms should be defined in the Business Case.	<input type="checkbox"/> True <input checked="" type="checkbox"/> False

NEW QUESTION 16

- (Exam Topic 2)

Scenario

A central government department, the Ministry of Food Hygiene (MFH), faces increasing pressure to cut costs, better manage suppliers' performance and reduce the confusion caused by inadequate internal controls, outdated standards and outdated technology. External consultants were employed to conduct a feasibility study to identify options to address the problems, and the likely costs and benefits. The following options were considered:

Do nothing.

Re-engineer selected business functions. Outsource selected business functions.

The feasibility study concluded that there was a case for outsourcing the MFH Information Technology Division and the Facilities Division (maintenance of buildings and grounds). The recommendations were:

One service provider should be contracted to provide the services currently provided by the Information Technology Division and the Facilities Division.

A 10-year service contract should be agreed with the selected service provider.

The feasibility study developed high-level designs of the current organization, processes, systems and operating models, plus an outline Business Case for the required project. The external consultants also made the following recommendations for the management of the project:

Use PRINCE2.

Set up the project with 4 management stages: Stage 1. Standard PRINCE2 initiation activities.

Stage 2. Create detailed designs (future organization, processes, systems and operating models) and the service level agreement between MFH and the future service provider.

Stage 3. Request and evaluate proposals, select service provider and agree contract.

Stage 4. Transfer equipment and staff, transfer responsibility for service provision and run trial period. Initial estimates indicated that the project would cost £2.5m and take two years to complete.

MFH senior management agreed that there was a case for outsourcing, and accepted the recommendations as a basis for the project. There is an expected saving of £20m over 10 years.

The Outsourcing project has completed the Starting up a Project process and is now in the initiation stage. Because of the strategic importance of the project, the MFH Chief Executive Officer has taken the role of Executive. A PRINCE2-experienced Project Manager has been appointed from within MFH. Staff within the business functions being outsourced will work with the external consultants who conducted the feasibility study to define the detailed designs.

Which 2 statements should be recorded under the Timescale heading?

- A. The contract with the selected service provider will be agreed during stage 3.
- B. The expected benefits will be calculated over 10 years from completion of the project.
- C. If more MFH divisions are added to the scope of the services to be outsourced, the project timescale will be extended and the realization of benefits will be delayed.
- D. The expected benefits should start to be realized as soon as the outsourced services become operational at the end of stage 4.
- E. The transfer of equipment and staff is estimated to take six weeks.

Answer: AB

NEW QUESTION 19

- (Exam Topic 2)

Who is responsible for ensuring that the value-for-money solution is constantly reassessed?

- A. Business Assurance
- B. Senior User
- C. Corporate or Programme Management
- D. Reject Support

Answer: A

NEW QUESTION 21

- (Exam Topic 2)

Scenario

A central government department, the Ministry of Food Hygiene (MFH), faces increasing pressure to cut costs, better manage suppliers' performance and reduce the confusion caused by inadequate internal controls, outdated standards and outdated technology. External consultants were employed to conduct a feasibility

study to identify options to address the problems, and the likely costs and benefits. The following options were considered:

Do nothing.

Re-engineer selected business functions. Outsource selected business functions.

The feasibility study concluded that there was a case for outsourcing the MFH Information Technology Division and the Facilities Division (maintenance of buildings and grounds). The recommendations were:

One service provider should be contracted to provide the services currently provided by the Information Technology Division and the Facilities Division.

A 10-year service contract should be agreed with the selected service provider.

The feasibility study developed high-level designs of the current organization, processes, systems and operating models, plus an outline Business Case for the required project. The external consultants also made the following recommendations for the management of the project:

Use PRINCE2.

Set up the project with 4 management stages: Stage 1. Standard PRINCE2 initiation activities.

Stage 2. Create detailed designs (future organization, processes, systems and operating models) and the service level agreement between MFH and the future service provider.

Stage 3. Request and evaluate proposals, select service provider and agree contract.

Stage 4. Transfer equipment and staff, transfer responsibility for service provision and run trial period. Initial estimates indicated that the project would cost £2.5m and take two years to complete.

MFH senior management agreed that there was a case for outsourcing, and accepted the recommendations as a basis for the project. There is an expected saving of £20m over 10 years.

The Outsourcing project has completed the Starting up a Project process and is now in the initiation stage. Because of the strategic importance of the project, the MFH Chief Executive Officer has taken the role of Executive. A PRINCE2-experienced Project Manager has been appointed from within MFH. Staff within the business functions being outsourced will work with the external consultants who conducted the feasibility study to define the detailed designs.

Which 2 statements should be recorded under the Major risks heading?

- A. Due to market conditions a suitable service provider may not be found, possibly leading to premature closure of the project.
- B. Owing to employment contract changes staff may resist outsourcing, which would make it difficult to transfer staff to the selected service provider.
- C. MFH's operations may be reduced and the 1a-year contract may not achieve its estimated value of £80m, which would reduce the service provider's profit.
- D. The initial estimates, taken from the feasibility study report, indicate that the project will take two years to complete, which means that the business problems would remain for this period.
- E. The management stages recommended by the consultants may not be appropriate, resulting in confusion in planning.

Answer: BD

NEW QUESTION 23

- (Exam Topic 2)

Which of the following statements is TRUE with regard to expected benefits?

- A. They cannot be assigned
- B. They don't need to follow corporate objectives
- C. They should be measurable
- D. Tolerances cannot be set against expected benefits

Answer: C

NEW QUESTION 25

- (Exam Topic 3)

Which of the following statements is true of the business interest on the project?

- A. Ensures the project provides value for money
- B. Ensures the requirements for the project are defined
- C. Ensures the products produced meet the desired quality
- D. Represents the users of the product

Answer: A

NEW QUESTION 26

- (Exam Topic 3)

In which Management product would the Project Board specify where the authority for change requests lies?

- A. Risk Management Strategy
- B. Quality Management Strategy
- C. Communication Strategy
- D. Configuration Management Strategy

Answer: D

NEW QUESTION 30

- (Exam Topic 3)

Which of the following roles cannot be combined?

- A. Executive and Senior User
- B. Project Manager and Project Support
- C. Project Assurance and Team Manager
- D. Senior Supplier and Supplier Assurance

Answer: C

NEW QUESTION 32

- (Exam Topic 3)

Scenario

Additional Information

Chief Executive Officer (CEO): He started the company 25 years ago and knows his job very well. He injured his leg two years ago which has restricted his visits to the engineering area. As CEO he has an overall perspective of the business strategic requirements and the authority to commit resources as required.

Marketing Director: She has been with the company for three years, following a successful career with a publicity company. She has the ability to represent the needs of the business, particularly as this is a marketing project. She has the authority to commit the annual business marketing budget, from which the project will be funded, as she sees appropriate. She will be responsible for monitoring the expected benefits of the calendar, in particular the improvement of the company's image.

Engineering Manager: He has been responsible for many engineering innovations in the company and is still as keen and energetic as the day he started. VVhilst he will not be part of the project team, his staff will feature in the photos for the promotional calendar.

Central Records: This group of five staff looks after all company records and document control. They now maintain all project files.

Bright Lights: This is the local office supplies company. It supplies all the stationery and office equipment needs of the company and will supply the stationery for this project.

Portraits Ltd: This is a professional photographic company with a number of excellent photographers and a history of successful work. This company has been selected to take the photos for the company calendar. It has yet be decided which of the photographers to use.

Which 2 statements explain why the Marketing Director should be appointed as the Executive for this project?

- A. She has been with the company for three years.
- B. She previously had a successful career in publicity.
- C. She is able to represent the business needs of MNO Manufacturing.
- D. She has authority to commit the marketing budget, from which the project will be funded.
- E. She requires more experience working with the engineering industry.

Answer: CD

NEW QUESTION 37

- (Exam Topic 3)

Scenario

Additional Information

Chief Executive Officer (CEO): He started the company 25 years ago and knows his job very well. He injured his leg two years ago which has restricted his visits to the engineering area. As CEO he has an overall perspective of the business strategic requirements and the authority to commit resources as required.

Marketing Director: She has been with the company for three years, following a successful career with a publicity company. She has the ability to represent the needs of the business, particularly as this is a marketing project. She has the authority to commit the annual business marketing budget, from which the project will be funded, as she sees appropriate. She will be responsible for monitoring the expected benefits of the calendar, in particular the improvement of the company's image.

Engineering Manager: He has been responsible for many engineering innovations in the company and is still as keen and energetic as the day he started. VVhilst he will not be part of the project team, his staff will feature in the photos for the promotional calendar.

Central Records: This group of five staff looks after all company records and document control. They now maintain all project files.

Bright Lights: This is the local office supplies company. It supplies all the stationery and office equipment needs of the company and will supply the stationery for this project.

Portraits Ltd: This is a professional photographic company with a number of excellent photographers and a history of successful work. This company has been selected to take the photos for the company calendar. It has yet been decided which of the photographers to use.

Which 2 statements explain why the CEO should be appointed as the Executive for this project?

- A. He started the company 25 years ago.
- B. He knows his job very well.
- C. He restricts his visits to the engineering area.
- D. He has the authority to commit resources as required.
- E. He has an overall perspective of the business's strategic requirements.

Answer: DE

NEW QUESTION 42

- (Exam Topic 3)

Which of the following is False?

A Successful project management team should.

- A. Have business, user and supplier stakeholder representation
- B. Never be reviewed as members should stay with the team for the duration
- C. Ensure appropriate governance by defining responsibilities for directing, managing and delivering the project and clearly defining accountability at all levels
- D. Have an effective strategy to manage communication flows to and from stakeholders

Answer: B

NEW QUESTION 47

- (Exam Topic 3)

Scenario

Additional Information

Chief Executive Officer (CEO): He started the company 25 years ago and knows his job very well. He injured his leg two years ago which has restricted his visits to the engineering area. As CEO he has an overall perspective of the business strategic requirements and the authority to commit resources as required.

Marketing Director: She has been with the company for three years, following a successful career with a publicity company. She has the ability to represent the needs of the business, particularly as this is a marketing project. She has the authority to commit the annual business marketing budget, from which the project will be funded, as she sees appropriate. She will be responsible for monitoring the expected benefits of the calendar, in particular the improvement of the company's image.

Engineering Manager: He has been responsible for many engineering innovations in the company and is still as keen and energetic as the day he started. VVhilst he will not be part of the project team, his staff will feature in the photos for the promotional calendar.

Central Records: This group of five staff looks after all company records and document control. They now maintain all project files.

Bright Lights: This is the local office supplies company. It supplies all the stationery and office equipment needs of the company and will supply the stationery for this project.

Portraits Ltd: This is a professional photographic company with a number of excellent photographers and a history of successful work. This company has been

selected to take the photos for the company calendar. It has yet to be decided which of the photographers to use.
Which 2 statements explain why the Sales Manager should be appointed as User Assurance for this project?

- A. He joined the company last year with huge enthusiasm and is keen to increase sales.
- B. He can provide an evaluation of the potential impact the calendar will have on sales.
- C. He is able to advise on suitable stakeholder engagement of current and prospective customers.
- D. He would like to move into the Marketing department in the future and sees this as an opportunity to work closely with the Marketing Director.
- E. He can resolve any conflict in requirements between the Sales department and the Marketing department.

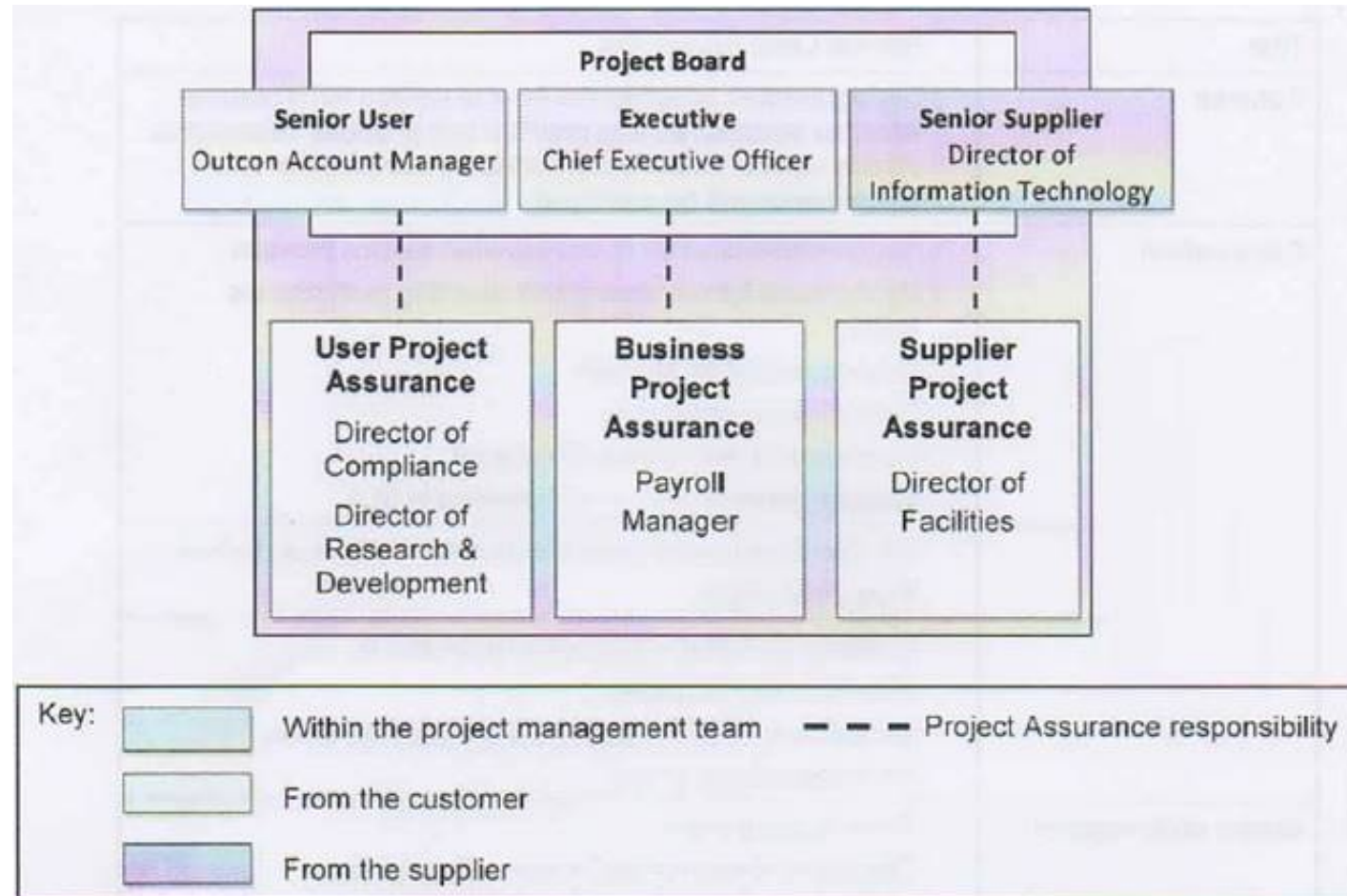
Answer: BC

NEW QUESTION 48

- (Exam Topic 3)

Scenario

Additional Information



Further information on some resources who could be involved in the project:

Outcome Account Manager: He represents Outcome which is a recruitment agency that provides specialist outsourcing resources. Outcome provided the consultants who carried out the feasibility study and the same consultants will be providing support and guidance to the Information Technology and Facilities teams during the project.

Director of Finance Division: She was transferred from the Information Technology Division 12 months ago. She is responsible for ensuring a cost-conscious approach is adopted in all operational and project activities across the Ministry of Food Hygiene.

Hardware Manager: Reports to the Director of Information Technology. He provides computer hardware to all business functions but has little awareness of the needs of his colleagues working in software.

Payroll Manager: Reports to the Director of Finance. He is a very experienced and efficient qualified accountant who has much of the responsibility of running the Finance Division on behalf of the Director of Finance. He has been involved in drafting the Ministry's business strategy and assisting in a full business risk assessment. He also drafted the corporate Business Case standards.

Which 2 alternative actions apply to the proposed supplier assurance for this project?

- A. Retain because he has a professional facilities qualification and so is in a position to specify the needs of his division.
- B. Retain because he will be able to advise on many of the products that will enable outsourcing to happen, such as the 10-year outsourcing service contract.
- C. Retain because he is well-regarded within the Ministry because of the efficiencies, superb service and savings he has achieved in the Facilities Division.
- D. Add 'Outcome Account Manager' because he will advise on potential changes and their impact on the integrity of the project's products.
- E. Remove because he is involved with the project and is therefore NOT independent.

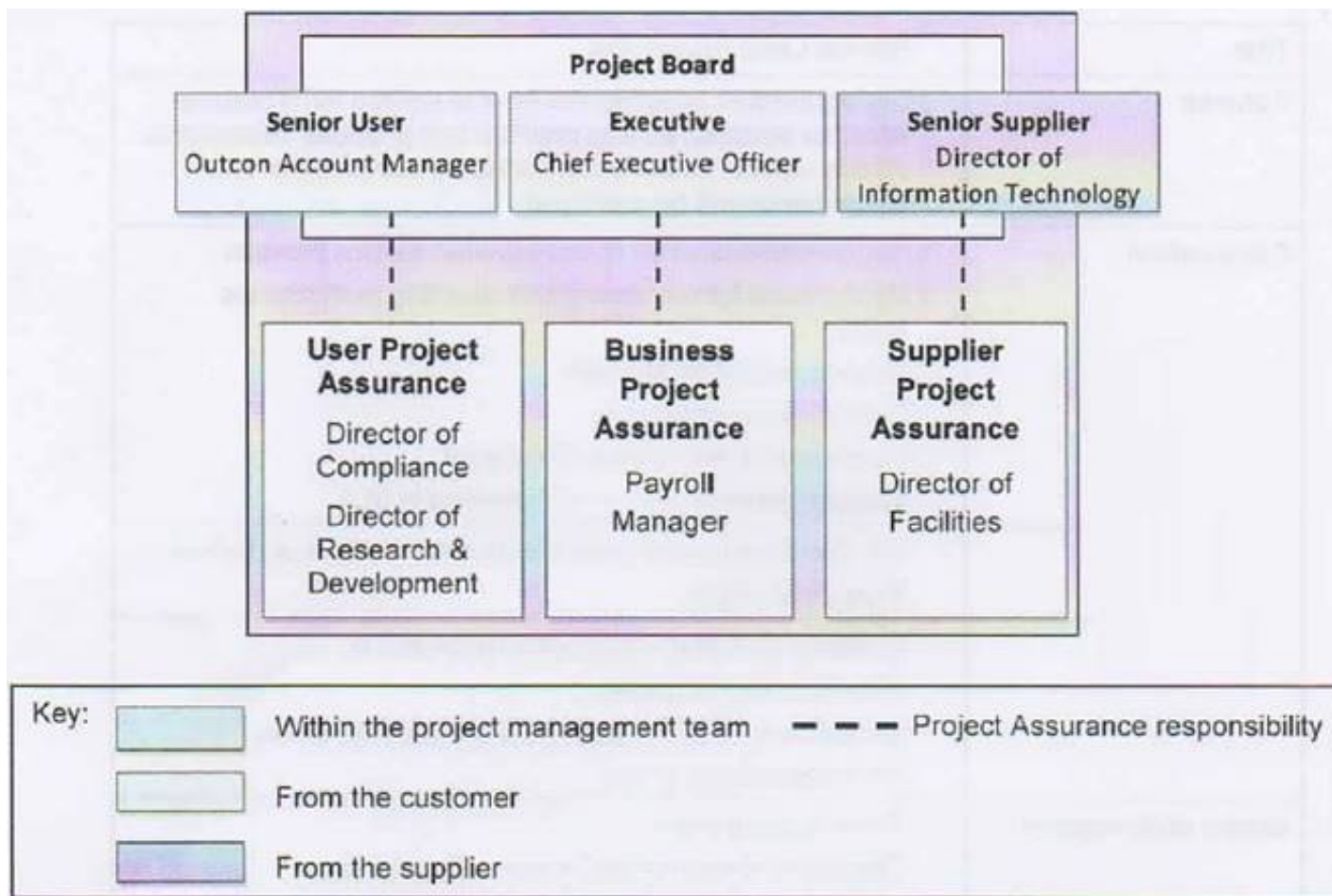
Answer: BD

NEW QUESTION 52

- (Exam Topic 3)

Scenario

Additional Information



Further information on some resources who could be involved in the project:

Outcome Account Manager: He represents Outcome which is a recruitment agency that provides specialist outsourcing resources. Outcome provided the consultants who carried out the feasibility study and the same consultants will be providing support and guidance to the Information Technology and Facilities teams during the project.

Director of Finance Division: She was transferred from the Information Technology Division 12 months ago. She is responsible for ensuring a cost-conscious approach is adopted in all operational and project activities across the Ministry of Food Hygiene.

Hardware Manager: Reports to the Director of Information Technology. He provides computer hardware to all business functions but has little awareness of the needs of his colleagues working in software.

Payroll Manager: Reports to the Director of Finance. He is a very experienced and efficient qualified accountant who has much of the responsibility of running the Finance Division on behalf of the Director of Finance. He has been involved in drafting the Ministry's business strategy and assisting in a full business risk assessment. He also drafted the corporate Business Case standards.

Which 2 alternative actions apply to the proposed Senior User for this project?

- A. Retain because he provides the outsourcing resources required to support the project.
- B. Replace with 'Director of Research and Development' because she deals with both the Information Technology and the Facilities Divisions and can make sure her division's needs are specified.
- C. Remove because he has no authority to commit user resources.
- D. Add 'Hardware Manager' because he provides computer hardware to all business functions and will be impacted by the outcome.
- E. Retain because he will be providing support to the Information Technology and Facilities teams during the project.

Answer: BC

NEW QUESTION 57

- (Exam Topic 4)

Scenario

Extract from the Project Product Description (with errors)

Composition	1. Monthly calendar displays 2. 100gsm glossy paper 3. Full colour 4. Selected envelope 5. Chosen label design 6. List of customers 7. Selected photos 8. Photo session schedule
Derivation	9. New company logo design 10. Previous calendar designs 11. Internal creative team 12. Production cost forecast
Development skills required	13. Photographer 14. Internal creative team 15. Printer
Customer's quality expectations	16. Professional photos 17. 10% more calendars should be printed than required to allow for any late additions to the list of customers 18. Compliance with applicable corporate standards 19. The calendar should reflect the company image as described in the corporate branding standards 20. The calendar will increase orders by at least 10% with a minimum of 10 further orders from the list of prospective customers within 12 months
Acceptance criteria	21. Appearance - each photo should be sufficiently attractive and humorous that the customer wants to display it 22. Appearance - new company logo promotes strong image 23. Security - complies with Data Protection Act 24. Accuracy - public holidays match the list supplied by Marketing on 01 November

Which 2 statements apply to the Acceptance criteria section?

- A. Amend entry 21 to 'Appearance - 12 photos each showing different members of staff.
- B. Move entry 21 to Composition because the photos are part of the final product.
- C. Delete entry 22 because the development of the new company logo is not within the scope of the Calendar project.
- D. Move entry 23 to Derivation because the Data Protection Act already exists.
- E. Delete entry 24 because this is NOT a suitable acceptance criteria for this project.

Answer: AC

NEW QUESTION 62

- (Exam Topic 4)

Which of the following statements would NOT be included in the Project Product Description?

- A. Purpose of the product
- B. Composition
- C. Project level tolerances
- D. Quality criteria

Answer: D

NEW QUESTION 65

- (Exam Topic 4)

Scenario

Additional Information Product Description

Title	Service Level Agreement.
Purpose	<ul style="list-style-type: none"> This agreement specifies the level of service MFH requires from the selected service provider and provides measurable criteria against which the selected service provider's performance will be assessed.
Composition	<ul style="list-style-type: none"> Responsibilities of MFH and selected service provider. Mechanisms for monitoring and reporting performance levels. Dispute resolution process. Confidentiality provisions. Conditions for termination of contract. Glossary of technical terms contained in SLA.
Format and presentation	<ul style="list-style-type: none"> A4, Word document, printed both sides in black and white. Font: Arial, 12pts.
Quality criteria	<ul style="list-style-type: none"> Contains all composition items listed above. Not more than 60 pages. Complies with MFH corporate branding standards. No typographical errors.
Quality skills required	<ul style="list-style-type: none"> Proof-reading skills. Director of Compliance Division - Reviewer. Director of Information Technology Division - Reviewer. Administrator.
Quality responsibilities	<ul style="list-style-type: none"> Producer/Presenter: Director of Facilities Division. Chair: Project Manager.

Quality notes from the Daily Log

The Director of Information Technology Division (DIT) has been asked to ensure that any changes to the outsourced staff employment contracts adhere to employment law. The DIT will review future job descriptions of the transferred staff before the final contract is signed with the selected service provider. The service level agreement between MFH and the selected service provider will specify the type and quality of service required. The selected service provider must follow the industry standards for providing outsourced services.

MFH has a quality management system which contains a document control procedure for all its documentation, however this does not include change management.

All project documents will be subject to a quality review. Nominated products will require a formal approval record signed-off by the quality review chair.

Extract from the draft Quality Management Strategy (may contain errors) Introduction

- * 1. This document defines the approach to be taken to achieve the required quality levels during the project.
- * 2. The Project Board will have overall responsibility for the Quality Management Strategy.
- * 3. Project Assurance will provide assurance on the implementation of the Quality Management Strategy. Quality management procedure - Quality standards
- * 4. The selected service provider will operate to industry standards for providing outsourced services.
- * 5. MFH document standards will be used. Records
- * 6. A Quality Register will be maintained to record the planned quality events and the actual results from the quality activities.
- * 7. Configuration Item Records will be maintained for each product to describe its status, version and variant.
- * 8. Approval records for products that require them will be stored in the quality database. Roles and responsibilities
- * 9. The DIT will check that the employment contracts for outsourced staff adhere to employment law.
- * 10. Team Managers will provide details of quality checks that have been carried out.
- * 11. Team Managers will ensure that the Quality Register is updated with the names of team members who are involved in the review process.
- * 12. The Senior User will review the Product Descriptions of the products to be produced by the selected service provider to ensure that they can be achieved.

The service level agreement looks like any other MFH document.

- A. Obtain agreement from the Director of Facilities Division to redesign the service level agreement within the remaining +2 days tolerance.
- B. Raise an issue (off-specification).
- C. Accept this error as a concession.
- D. No action required.

Answer: D

NEW QUESTION 68

- (Exam Topic 4)

Which of the following statements are True:

- * 1. Quality management is the complete set of quality standards, procedures and responsibilities for a site or organization.
- * 2. Quality planning is about defining products required of the project with their respective quality criteria, methods and responsibilities.
- * 3. Quality control focuses on the operational techniques and activities used to carry out quality inspections
- * 4. Quality assurance ensures that quality methods are being correctly followed.

- A. 1, 2 & 3
- B. 1, 3 & 4
- C. 1, 2 & 4
- D. 2, 3 & 4

Answer: A

NEW QUESTION 69

- (Exam Topic 4)

Scenario

Extract from the Project Product Description (with errors)

Composition	1. Monthly calendar displays 2. 100gsm glossy paper 3. Full colour 4. Selected envelope 5. Chosen label design 6. List of customers 7. Selected photos 8. Photo session schedule
Derivation	9. New company logo design 10. Previous calendar designs 11. Internal creative team 12. Production cost forecast
Development skills required	13. Photographer 14. Internal creative team 15. Printer
Customer's quality expectations	16. Professional photos 17. 10% more calendars should be printed than required to allow for any late additions to the list of customers 18. Compliance with applicable corporate standards 19. The calendar should reflect the company image as described in the corporate branding standards 20. The calendar will increase orders by at least 10% with a minimum of 10 further orders from the list of prospective customers within 12 months
Acceptance criteria	21. Appearance - each photo should be sufficiently attractive and humorous that the customer wants to display it 22. Appearance - new company logo promotes strong image 23. Security - complies with Data Protection Act 24. Accuracy - public holidays match the list supplied by Marketing on 01 November

Which 2 statements apply to the Derivation section?

- A. Move entry 9 to Composition because this is within the scope of the project.
- B. Delete entry 10 because this is NOT a source product for this project.
- C. Delete entry 11 as this is already correctly shown under Development Skills required.
- D. Move entry 12 to Composition, because this is within the scope of this project.
- E. Add 'Professional photographer'.

Answer: CD

NEW QUESTION 74

- (Exam Topic 4)

Scenario

Additional Information Product Description

Title	Service Level Agreement.
Purpose	<ul style="list-style-type: none"> This agreement specifies the level of service MFH requires from the selected service provider and provides measurable criteria against which the selected service provider's performance will be assessed.
Composition	<ul style="list-style-type: none"> Responsibilities of MFH and selected service provider. Mechanisms for monitoring and reporting performance levels. Dispute resolution process. Confidentiality provisions. Conditions for termination of contract. Glossary of technical terms contained in SLA.
Format and presentation	<ul style="list-style-type: none"> A4, Word document, printed both sides in black and white. Font: Arial, 12pts.
Quality criteria	<ul style="list-style-type: none"> Contains all composition items listed above. Not more than 60 pages. Complies with MFH corporate branding standards. No typographical errors.
Quality skills required	<ul style="list-style-type: none"> Proof-reading skills. Director of Compliance Division - Reviewer. Director of Information Technology Division - Reviewer. Administrator.
Quality responsibilities	<ul style="list-style-type: none"> Producer/Presenter: Director of Facilities Division. Chair: Project Manager.

Quality notes from the Daily Log

The Director of Information Technology Division (DIT) has been asked to ensure that any changes to the outsourced staff employment contracts adhere to employment law. The DIT will review future job descriptions of the transferred staff before the final contract is signed with the selected service provider. The service level agreement between MFH and the selected service provider will specify the type and quality of service required. The selected service provider must follow the industry standards for providing outsourced services.

MFH has a quality management system which contains a document control procedure for all its documentation, however this does not include change management.

All project documents will be subject to a quality review. Nominated products will require a formal approval record signed-off by the quality review chair.

Extract from the draft Quality Management Strategy (may contain errors) Introduction

- * 1. This document defines the approach to be taken to achieve the required quality levels during the project.
- * 2. The Project Board will have overall responsibility for the Quality Management Strategy.
- * 3. Project Assurance will provide assurance on the implementation of the Quality Management Strategy. Quality management procedure - Quality standards
- * 4. The selected service provider will operate to industry standards for providing outsourced services.
- * 5. MFH document standards will be used. Records
- * 6. A Quality Register will be maintained to record the planned quality events and the actual results from the quality activities.
- * 7. Configuration Item Records will be maintained for each product to describe its status, version and variant.
- * 8. Approval records for products that require them will be stored in the quality database. Roles and responsibilities
- * 9. The DIT will check that the employment contracts for outsourced staff adhere to employment law.
- * 10. Team Managers will provide details of quality checks that have been carried out.
- * 11. Team Managers will ensure that the Quality Register is updated with the names of team members who are involved in the review process.
- * 12. The Senior User will review the Product Descriptions of the products to be produced by the selected service provider to ensure that they can be achieved.

Which is a correctly defined acceptance criterion for the transferred staff?

- A. No staff are to be left behind.
- B. Staff should be transferred as soon as possible.
- C. All legal requirements are adhered to for the transfer of staff.
- D. Retained staff should be of reasonable competence to maintain the SLA.

Answer: C

NEW QUESTION 76

- (Exam Topic 5)

The project has a cost tolerance of +5% I -5%, of which stage 2 has a tolerance of +£45k 1-£45k.

Lines 1 to 6 in the table below consist of an assertion statement and a reason statement. For each line identify the appropriate option, from options A to E, that applies. Each option can be used once, more than once or not at all.

	Assertion		Reason	
1	If stage 2 exceeds its target by £20k the Stage Plan should be replaced by an Exception Plan.	True-False	When the Stage Plan is updated with activities to deal with any deviations from planned cost and time, this is called an Exception Plan.	True-False
2	The Team Plan required for the development of the service level agreement should be produced in consultation with supplier assurance.	True-False	Supplier assurance should confirm that Team Plans are in accordance with relevant supplier standards.	True-False
3	The Stage Plan for stage 2 should be prepared during the initiation stage.	True-False	All Stage Plans are produced near the end of the initiation stage.	True-False
4	A final stage (stage 5), covering project closure, should be added to the Project Plan.	True-False	The Project Plan covers all management stages.	True-False
5	The cost tolerance planned for each stage should be +5% '5%.	True-False	Project tolerances for cost and time should always be allocated equally between all of the stages.	True-False
6	The key deliverables and estimates from the feasibility study should provide a major input to the Project Brief.	True-False	The feasibility study should confirm all project costs.	True-False

- A. Mastered
B. Not Mastered

Answer: A

Explanation:

	Assertion		Reason	
1	If stage 2 exceeds its target by £20k the Stage Plan should be replaced by an Exception Plan.	True-False	When the Stage Plan is updated with activities to deal with any deviations from planned cost and time, this is called an Exception Plan.	True-False
2	The Team Plan required for the development of the service level agreement should be produced in consultation with supplier assurance.	True-False	Supplier assurance should confirm that Team Plans are in accordance with relevant supplier standards.	True-False
3	The Stage Plan for stage 2 should be prepared during the initiation stage.	True-False	All Stage Plans are produced near the end of the initiation stage.	True-False
4	A final stage (stage 5), covering project closure, should be added to the Project Plan.	True-False	The Project Plan covers all management stages.	True-False
5	The cost tolerance planned for each stage should be +5% '5%.	True-False	Project tolerances for cost and time should always be allocated equally between all of the stages.	True-False
6	The key deliverables and estimates from the feasibility study should provide a major input to the Project Brief.	True-False	The feasibility study should confirm all project costs.	True-False

NEW QUESTION 80

- (Exam Topic 5)

Scenario

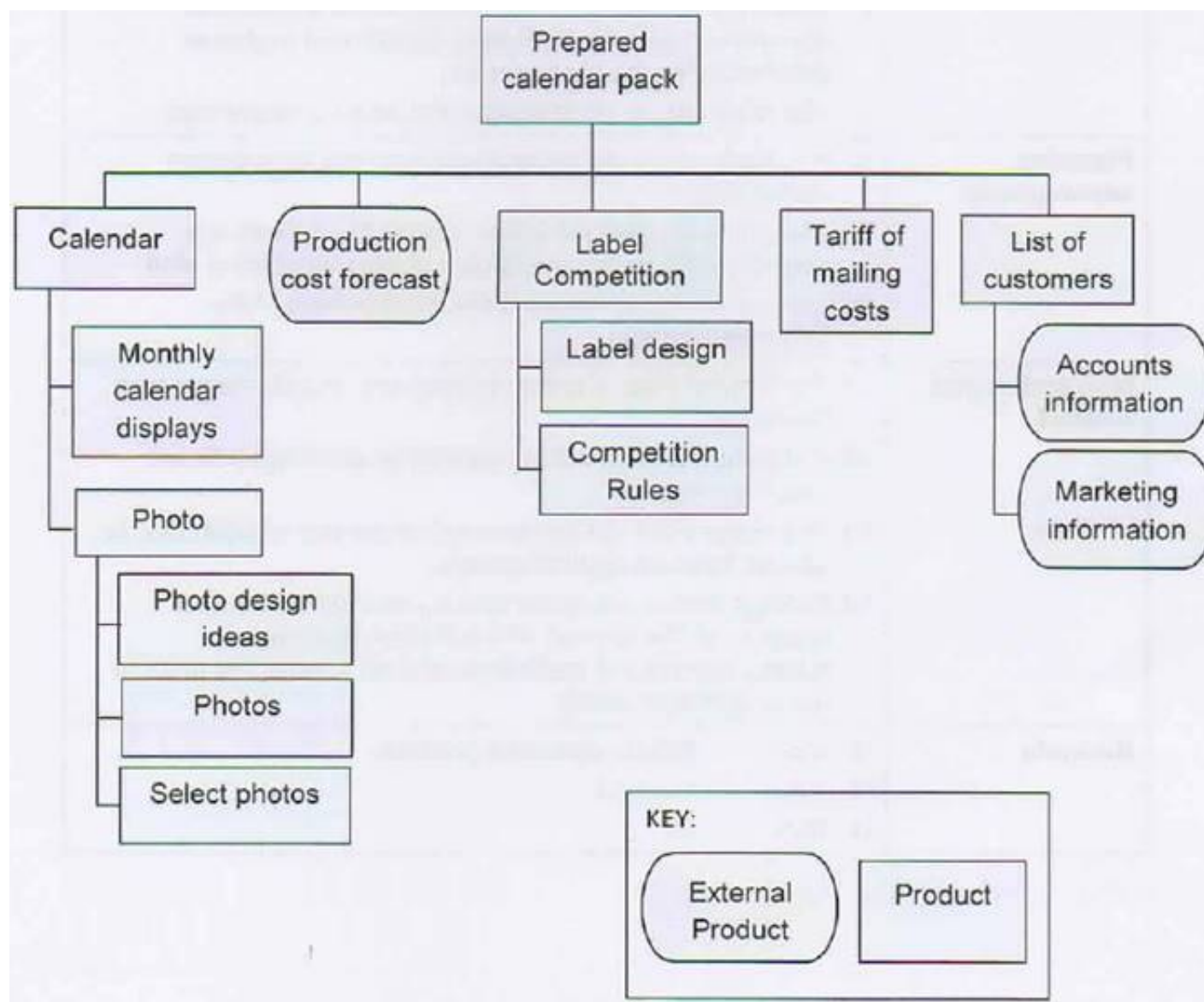
Product Summary

A list of customers will be collated. This will use existing information from the Accounts department about current customers, and existing information from the Marketing department about prospective customers.

Using the tariff of mailing costs available from the Post Office, a production cost forecast will be produced to allow the CEO and the Marketing Director to decide whether to continue with the project. If they decide to continue, they will give the approval to launch the internal label design competition. Competition rules will be required to communicate details of the competition to the staff. The chosen label design will then be selected from the competition entries.

The photos for the calendar must be based on existing photo design ideas available from the Marketing department. The selected photos will be chosen from these. Monthly calendar displays will be created to show the required layout of each page.

Product Breakdown Structure (contains errors)



Extract from Stage Plan for stage 3.

(All entries are true statements but may not be shown under the correct heading or in the correct document).

Plan description	1. Stage 3 is the final stage of the project and will deliver the photos, the label design competition entries, the winning label design and the prepared calendar pack.
Plan prerequisites	2. Increase in orders and improved company image. 3. The production cost forecast must be acceptable to the Project Board if the photography and label design competition are to go ahead. 4. The customer list is accurate and complete.
External dependencies	5. A separate project has been reviewing the company's branding. The company logo, required for the label design competition, is being updated. The new company logo is to be supplied by the other project in two weeks time. 6. Customer details will be supplied from the Accounts department and the Marketing department customer databases for the customer list. 7. The label design must contain the new company logo.
Planning assumptions	8. A suitable entry will be received from the label design competition. 9. The photo session schedule created two weeks ago correctly reflects the availability of the engineering staff. 10. Each photo must feature different members of the Engineering team.
Monitoring and control	11. The Project Plan is to be updated with actual throughout the stage. 12. A Highlight Report will be created for the Project Board every two weeks. 13. The Stage Plan will be reviewed at the end of each day, to assess forecast against actual. 14. Product Status Accounts will be produced by Project Support, at the request of the Project Manager, to summarize current and historical data concerning each of the project's products.
Budgets	15. Cost £5k for specialist products 16. Time 4 weeks 17. Risk £0

Using the Project Scenario and the Extract from Stage Plan for stage 3 provided as additional intonation for this question in the Scenario Booklet, answer the following 5 questions.

The Stage Plan for stage 3 has been produced.

The Engineering Manager insists that there are to be no interruptions to operations whilst photographs are being taken of the engineering staff performing their everyday duties and operating machinery. Two weeks ago the professional photographer produced the photo session schedule based on the operational staff schedule. The operational staff schedule is produced weekly and maintained by the Engineering Manager.

None of the £500 change budget has been used to date and this is available for the stage. Which 2 statements apply to the Planning assumptions section?

- A. No change to entry 8 because this cannot be confirmed until all of the label designs entries have been received and an assessment made.
- B. Move entry 8 to External dependencies because the label designs are created outside of the scope of the project.
- C. Delete entry 9 because the photo session schedule should have been approved as part of stage 2.
- D. Move entry 9 to External dependencies because the photo session schedule is created by the professional photographer.
- E. Delete entry 10 because the inclusion of different members from the Engineering team in each photo should be shown in the Product Description for the photos.

Answer: AE

NEW QUESTION 84

- (Exam Topic 5)

Which of the following is not part of the composition of a Plan?

- A. Pre-requisites
- B. Assumptions
- C. Quality responsibilities
- D. Product descriptions

Answer: C

NEW QUESTION 85

- (Exam Topic 5)

Drop down the right answer from Column 1 to column 2.

Column 1	Column 2
This plan includes the detailed design of the process model, systems model, operating model and organization model.	<div> <input type="checkbox"/> </div> <div> <input type="checkbox"/> </div> <div> <input type="checkbox"/> </div> <div> <input type="checkbox"/> </div> <div> <input type="checkbox"/> </div> <div> <input type="checkbox"/> </div> <div> <input type="checkbox"/> </div> <div> <input type="checkbox"/> </div> <div> <input type="checkbox"/> </div> <div> <input type="checkbox"/> </div>
A monthly stage status report will be provided to the Project Board.	<div> <input type="checkbox"/> </div> <div> <input type="checkbox"/> </div> <div> <input type="checkbox"/> </div> <div> <input type="checkbox"/> </div> <div> <input type="checkbox"/> </div> <div> <input type="checkbox"/> </div> <div> <input type="checkbox"/> </div> <div> <input type="checkbox"/> </div> <div> <input type="checkbox"/> </div> <div> <input type="checkbox"/> </div>
The high-level models, produced in the feasibility study by the management consultant, will be used by the project.	<div> <input type="checkbox"/> </div> <div> <input type="checkbox"/> </div> <div> <input type="checkbox"/> </div> <div> <input type="checkbox"/> </div> <div> <input type="checkbox"/> </div> <div> <input type="checkbox"/> </div> <div> <input type="checkbox"/> </div> <div> <input type="checkbox"/> </div> <div> <input type="checkbox"/> </div> <div> <input type="checkbox"/> </div>
The Project Board has approved the recommendation to outsource both the Information Technology Division and the Facilities Division to one service provider and this decision must remain in place.	<div> <input type="checkbox"/> </div> <div> <input type="checkbox"/> </div> <div> <input type="checkbox"/> </div> <div> <input type="checkbox"/> </div> <div> <input type="checkbox"/> </div> <div> <input type="checkbox"/> </div> <div> <input type="checkbox"/> </div> <div> <input type="checkbox"/> </div> <div> <input type="checkbox"/> </div> <div> <input type="checkbox"/> </div>
Based on advice from the Ministry of Trade and Industry that, in their experience, drafting a service level agreement is a lengthy process, allowances have been made for this in the Stage Plan for stage 2.	<div> <input type="checkbox"/> </div> <div> <input type="checkbox"/> </div> <div> <input type="checkbox"/> </div> <div> <input type="checkbox"/> </div> <div> <input type="checkbox"/> </div> <div> <input type="checkbox"/> </div> <div> <input type="checkbox"/> </div> <div> <input type="checkbox"/> </div> <div> <input type="checkbox"/> </div> <div> <input type="checkbox"/> </div>
Time: +2 weeks 1-2 weeks.	<div> <input type="checkbox"/> </div> <div> <input type="checkbox"/> </div> <div> <input type="checkbox"/> </div> <div> <input type="checkbox"/> </div> <div> <input type="checkbox"/> </div> <div> <input type="checkbox"/> </div> <div> <input type="checkbox"/> </div> <div> <input type="checkbox"/> </div> <div> <input type="checkbox"/> </div> <div> <input type="checkbox"/> </div>

- A. Mastered
B. Not Mastered

Answer: A

Explanation:

Column 1

This plan includes the detailed design of the process model, systems model, operating model and organization model.

A monthly stage status report will be provided to the Project Board.

The high-level models, produced in the feasibility study by the management consultant, will be used by the project.

The Project Board has approved the recommendation to outsource both the Information Technology Division and the Facilities Division to one service provider and this decision must remain in place.

Based on advice from the Ministry of Trade and Industry that, in their experience, drafting a service level agreement is a lengthy process, allowances have been made for this in the Stage Plan for stage 2.

Time: +2 weeks 1-2 weeks.

Column 2

Plan description
Plan prerequisites
External dependencies
Planning assumptions
Lessons incorporated
Monitoring and control
Budgets
Tolerances
Schedule

Plan description
Plan prerequisites
External dependencies
Planning assumptions
Lessons incorporated
Monitoring and control
Budgets
Tolerances
Schedule

Plan description
Plan prerequisites
External dependencies
Planning assumptions
Lessons incorporated
Monitoring and control
Budgets
Tolerances
Schedule

Plan description
Plan prerequisites
External dependencies
Planning assumptions
Lessons incorporated
Monitoring and control
Budgets
Tolerances
Schedule

Plan description
Plan prerequisites
External dependencies
Planning assumptions
Lessons incorporated
Monitoring and control
Budgets
Tolerances
Schedule

Plan description
Plan prerequisites
External dependencies
Planning assumptions
Lessons incorporated

NEW QUESTION 88

- (Exam Topic 5)

Scenario

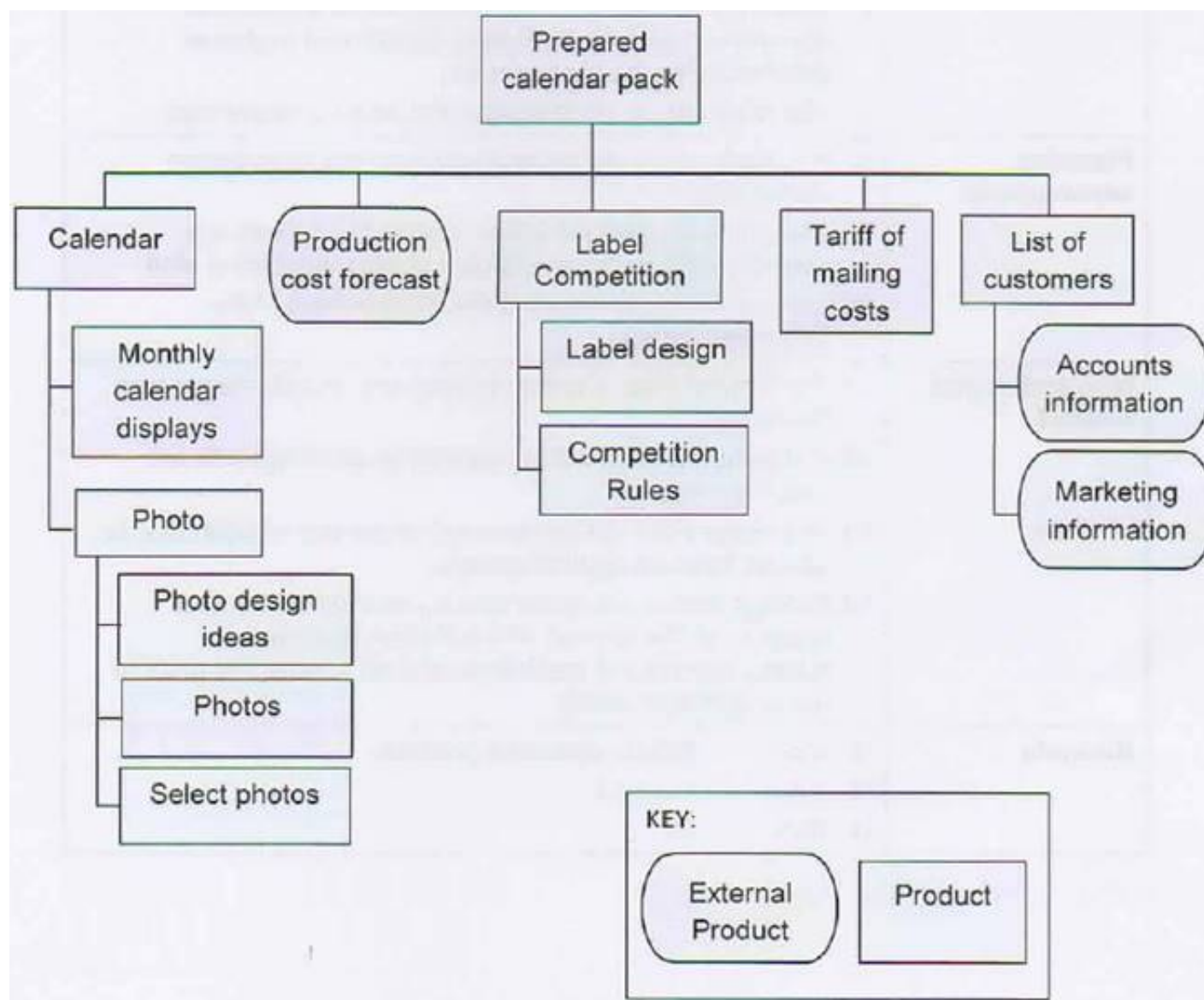
Product Summary

A list of customers will be collated. This will use existing information from the Accounts department about current customers, and existing information from the Marketing department about prospective customers.

Using the tariff of mailing costs available from the Post Office, a production cost forecast will be produced to allow the CEO and the Marketing Director to decide whether to continue with the project. If they decide to continue, they will give the approval to launch the internal label design competition. Competition rules will be required to communicate details of the competition to the staff. The chosen label design will then be selected from the competition entries.

The photos for the calendar must be based on existing photo design ideas available from the Marketing department. The selected photos will be chosen from these. Monthly calendar displays will be created to show the required layout of each page.

Product Breakdown Structure (contains errors)



Extract from Stage Plan for stage 3.

(All entries are true statements but may not be shown under the correct heading or in the correct document).

Plan description	1. Stage 3 is the final stage of the project and will deliver the photos, the label design competition entries, the winning label design and the prepared calendar pack.
Plan prerequisites	2. Increase in orders and improved company image. 3. The production cost forecast must be acceptable to the Project Board if the photography and label design competition are to go ahead. 4. The customer list is accurate and complete.
External dependencies	5. A separate project has been reviewing the company's branding. The company logo, required for the label design competition, is being updated. The new company logo is to be supplied by the other project in two weeks time. 6. Customer details will be supplied from the Accounts department and the Marketing department customer databases for the customer list. 7. The label design must contain the new company logo.
Planning assumptions	8. A suitable entry will be received from the label design competition. 9. The photo session schedule created two weeks ago correctly reflects the availability of the engineering staff. 10. Each photo must feature different members of the Engineering team.
Monitoring and control	11. The Project Plan is to be updated with actual throughout the stage. 12. A Highlight Report will be created for the Project Board every two weeks. 13. The Stage Plan will be reviewed at the end of each day, to assess forecast against actual. 14. Product Status Accounts will be produced by Project Support, at the request of the Project Manager, to summarize current and historical data concerning each of the project's products.
Budgets	15. Cost £5k for specialist products 16. Time 4 weeks 17. Risk £0

Using the Project Scenario and the Extract from Stage Plan for stage 3 provided as additional intonation for this question in the Scenario Booklet, answer the following 5 questions.

The Stage Plan for stage 3 has been produced.

The Engineering Manager insists that there are to be no interruptions to operations whilst photographs are being taken of the engineering staff performing their everyday duties and operating machinery. Two weeks ago the professional photographer produced the photo session schedule based on the operational staff schedule. The operational staff schedule is produced weekly and maintained by the Engineering Manager.

None of the £500 change budget has been used to date and this is available for the stage.

Which 2 statements apply to the External dependencies section?

- A. Delete entry 5 because the new company logo is being delivered by a separate project and will be detailed in the plans for that project.
- B. Move entry 5 to Plan prerequisites because the new company logo will influence the label designs.
- C. Move entry 5 to Plan description because the new company logo will be delivered during stage 3.
- D. Delete entry 6 because the customer details were used in stage 2 to create the customer list.
- E. Delete entry 7 because it should be shown in the Product Description for the label design.

Answer: DE

NEW QUESTION 93

- (Exam Topic 5)

Who is responsible for committing user resources to the project?

- A. Senior User
- B. Senior Supplier
- C. Executive
- D. Project Board

Answer: A

NEW QUESTION 95

- (Exam Topic 5)

Having completed designing the plan, in which order should the next steps take place to produce a plan?

- * 1. Prepare Estimates
- * 2. Define and analyze Products
- * 3. Prepare the schedule
- * 4. Identify activities and dependencies

- A. 2, 4, 3, 1
- B. 4, 2, 1, 3
- C. 4, 3, 2, 1
- D. 2, 4, 1, 3

Answer: D

NEW QUESTION 100

- (Exam Topic 6)

Scenario

A photographer from Portraits Ltd, a professional photographic company, has taken on the role of Team Manager after taking some time to understand the requirements of the project. A contract for their services has been set up and is being monitored by the Purchasing Manager and a Work Package has been agreed. This contract specifies that the photographer must arrange a meeting with the Engineering Manager to establish a schedule for the photo sessions to minimize the impact on the Engineering staff. This meeting should have occurred by now.

The Engineering Manager was made aware of this requirement but when asked he reported that he has received no communication from the photographer. The Project Manager has tried to call the photographer and has had no response. The Project Manager believes there is a risk that Portraits Ltd are overbooking work and prioritizing other clients' work. If Portraits Ltd do not deliver on schedule the project will be delayed and the expected benefits will be reduced.

The contract is to be reviewed and Portraits Ltd reminded of their agreement.

The project is now in stage 2. The Project Manager has heard about the possibility of a competitor also producing a calendar to be delivered earlier than the target date for this project. There is a threat that the early release of a competitor's calendar may weaken the impact of the MNO Manufacturing Company calendar, thereby reducing the anticipated benefits of the Calendar project.

Column 1 contains a number of risk responses identified by the Project Manager following an assessment of this risk. Column 2 contains a list of threat response types. For each risk response in Column 1, select from Column 2 the type of response it represents. Each option from Column 2 can be used once, more than once or not at all.

Column 1 contains a number of possible risk responses to the above risk. For each risk response, select from Column 2 the appropriate risk threat response type that it represents. Each selection from Column 2 can be used once, more than once or not at all.

Column 1	Column 2
Contract an outsourcing specialist to take an assurance role in the project, and provide advice to the Project Board and Project Manager.	<input type="text"/>
Include a clause in the contract with the selected service provider stating that, if the expected savings are not achieved, the selected service provider will reduce their fees accordingly.	<input type="text"/>
Hire experienced outsourcing contractors to assist in-house staff throughout the project.	<input type="text"/>
Rely on the selected service provider to act in a reliable and conscientious manner to provide the support and advice that will protect MFH's interests.	<input type="text"/>
Request assistance from central government if difficulties arise in understanding what is happening.	<input type="text"/>
Identify MFH employees with knowledge or experience in outsourcing and include them in the project team.	<input type="text"/>

Column 1	Column 2
Contract an outsourcing specialist to take an assurance role in the project, and provide advice to the Project Board and Project Manager.	<div><div></div><div>Avoid</div><div>Reduce</div><div>Fallback</div><div>Transfer</div><div>Accept</div><div>Share</div></div>
Include a clause in the contract with the selected service provider stating that, if the expected savings are not achieved, the selected service provider will reduce their fees accordingly.	<div><div></div><div>Avoid</div><div>Reduce</div><div>Fallback</div><div>Transfer</div><div>Accept</div><div>Share</div></div>
Hire experienced outsourcing contractors to assist in-house staff throughout the project.	<div><div></div><div>Avoid</div><div>Reduce</div><div>Fallback</div><div>Transfer</div><div>Accept</div><div>Share</div></div>
Rely on the selected service provider to act in a reliable and conscientious manner to provide the support and advice that will protect MFH's interests.	<div><div></div><div>Avoid</div><div>Reduce</div><div>Fallback</div><div>Transfer</div><div>Accept</div><div>Share</div></div>
Request assistance from central government if difficulties arise in understanding what is happening.	<div><div></div><div>Avoid</div><div>Reduce</div><div>Fallback</div><div>Transfer</div><div>Accept</div><div>Share</div></div>
Identify MFH employees with knowledge or experience in outsourcing and include them in the project team.	<div><div></div><div>Avoid</div><div>Reduce</div><div>Fallback</div><div>Transfer</div><div>Accept</div><div>Share</div></div>

- A. Mastered
B. Not Mastered

Answer: A

Explanation:

- 1 – Accept
2 – Fallback
3 – Share
4 – Accept
5 – Fallback
6 - Avoid

NEW QUESTION 104

- (Exam Topic 6)

Scenario

A photographer from Portraits Ltd, a professional photographic company, has taken on the role of Team Manager after taking some time to understand the requirements of the project. A contract for their services has been set up and is being monitored by the Purchasing Manager and a Work Package has been agreed. This contract specifies that the photographer must arrange a meeting with the Engineering Manager to establish a schedule for the photo sessions to minimize the impact on the Engineering staff. This meeting should have occurred by now.

The Engineering Manager was made aware of this requirement but when asked he reported that he has received no communication from the photographer. The Project Manager has tried to call the photographer and has had no response. The Project Manager believes there is a risk that Portraits Ltd are overbooking work and prioritizing other clients' work. If Portraits Ltd do not deliver on schedule the project will be delayed and the expected benefits will be reduced.

The contract is to be reviewed and Portraits Ltd reminded of their agreement.

The project is now in stage 2. The Project Manager has heard about the possibility of a competitor also producing a calendar to be delivered earlier than the target date for this project. There is a threat that the early release of a competitor's calendar may weaken the impact of the MNO Manufacturing Company calendar, thereby reducing the anticipated benefits of the Calendar project.

Which 2 statements should be recorded under the Proximity heading?

- A. Proximity categories for this project are: Imminent; Within the stage; Within the project; Beyond the project.
B. The risk of MFH having no outsourcing experience will be categorized as Stage 4 proximity.
C. Imminent risks are those which may occur within two weeks.
D. Any risk with a proximity category of imminent will be estimated as having a very high impact.

E. The risk of staff leaving the organization will be categorized as beyond the project proximity.

Answer: CD

NEW QUESTION 108

- (Exam Topic 6)

Scenario

A photographer from Portraits Ltd, a professional photographic company, has taken on the role of Team Manager after taking some time to understand the requirements of the project. A contract for their services has been set up and is being monitored by the Purchasing Manager and a Work Package has been agreed. This contract specifies that the photographer must arrange a meeting with the Engineering Manager to establish a schedule for the photo sessions to minimize the impact on the Engineering staff. This meeting should have occurred by now.

The Engineering Manager was made aware of this requirement but when asked he reported that he has received no communication from the photographer. The Project Manager has tried to call the photographer and has had no response. The Project Manager believes there is a risk that Portraits Ltd are overbooking work and prioritizing other clients' work. If Portraits Ltd do not deliver on schedule the project will be delayed and the expected benefits will be reduced.

The contract is to be reviewed and Portraits Ltd reminded of their agreement.

The project is now in stage 2. The Project Manager has heard about the possibility of a competitor also producing a calendar to be delivered earlier than the target date for this project. There is a threat that the early release of a competitor's calendar may weaken the impact of the MNO Manufacturing Company calendar, thereby reducing the anticipated benefits of the Calendar project.

Which 2 statements should be recorded under the Risk tolerance heading?

- A. Corporate management's threshold level of risk exposure is any combination of high and very high impact and probability.
- B. The Project Board's threshold level of risk exposure is any combination of medium, high and very high impact, with high and very high probability.
- C. The Project Manager's threshold level of risk exposure is low impact and probability.
- D. The cost of all fallback plans must be contained within the project's tolerance.
- E. The risk budget will have a tolerance of +/- 10%.

Answer: BD

NEW QUESTION 112

- (Exam Topic 6)

Scenario

A photographer from Portraits Ltd, a professional photographic company, has taken on the role of Team Manager after taking some time to understand the requirements of the project. A contract for their services has been set up and is being monitored by the Purchasing Manager and a Work Package has been agreed. This contract specifies that the photographer must arrange a meeting with the Engineering Manager to establish a schedule for the photo sessions to minimize the impact on the Engineering staff. This meeting should have occurred by now.

The Engineering Manager was made aware of this requirement but when asked he reported that he has received no communication from the photographer. The Project Manager has tried to call the photographer and has had no response. The Project Manager believes there is a risk that Portraits Ltd are overbooking work and prioritizing other clients' work. If Portraits Ltd do not deliver on schedule the project will be delayed and the expected benefits will be reduced.

The contract is to be reviewed and Portraits Ltd reminded of their agreement.

The project is now in stage 2. The Project Manager has heard about the possibility of a competitor also producing a calendar to be delivered earlier than the target date for this project. There is a threat that the early release of a competitor's calendar may weaken the impact of the MNO Manufacturing Company calendar, thereby reducing the anticipated benefits of the Calendar project.

Which 2 statements should be recorded under the Risk management procedure heading?

- A. When a new problem arises, a full impact analysis will be undertaken to assess the impact on the project' objectives and Business Case.
- B. Probability will be assessed against the scales defined in this Risk Management Strategy.
- C. Any risk which has an expected value of more than £1 k will NOT be registered.
- D. Every threat and opportunity identified must be clearly defined in terms of cause, event and effect.
- E. 'Reduce' Response actions which result in a lower impact and/or probability rating.

Answer: BD

NEW QUESTION 117

- (Exam Topic 6)

Scenario

A photographer from Portraits Ltd, a professional photographic company, has taken on the role of Team Manager after taking some time to understand the requirements of the project. A contract for their services has been set up and is being monitored by the Purchasing Manager and a Work Package has been agreed. This contract specifies that the photographer must arrange a meeting with the Engineering Manager to establish a schedule for the photo sessions to minimize the impact on the Engineering staff. This meeting should have occurred by now.

The Engineering Manager was made aware of this requirement but when asked he reported that he has received no communication from the photographer. The Project Manager has tried to call the photographer and has had no response. The Project Manager believes there is a risk that Portraits Ltd are overbooking work and prioritizing other clients' work. If Portraits Ltd do not deliver on schedule the project will be delayed and the expected benefits will be reduced.

The contract is to be reviewed and Portraits Ltd reminded of their agreement.

The project is now in stage 2. The Project Manager has heard about the possibility of a competitor also producing a calendar to be delivered earlier than the target date for this project. There is a threat that the early release of a competitor's calendar may weaken the impact of the MNO Manufacturing Company calendar, thereby reducing the anticipated benefits of the Calendar project.

There is a major concern over an apparent lack of control of project documentation.

For each concern listed in Column 1, select from Column 2 the configuration management task that could help address the problem. Each selection from Column 2 can be used once, more than once or not at all.

Column 1	Column 2
As a number of people are involved in the project it is becoming increasingly difficult to keep track of what documentation each person has.	<div></div>
Both current and previous versions of the photo session schedule are in circulation.	<div></div>
A revised list of customers has been issued but it is not clear what was wrong with the previous one.	<div></div>
The Marketing department has lost the chosen label design and no copy was made.	<div></div>
The Marketing department staff cannot say with any certainty which photos were approved and which still require work.	<div></div>
The Engineering Manager has complained that the photo session schedule has been changed and that no consideration has been given to the impact this will have on the engineering staff shift pattern.	<div></div>

Column 1

As a number of people are involved in the project it is becoming increasingly difficult to keep track of what documentation each person has.

Both current and previous versions of the photo session schedule are in circulation.

A revised list of customers has been issued but it is not clear what was wrong with the previous one.

The Marketing department has lost the chosen label design and no copy was made.

The Marketing department staff cannot say with any certainty which photos were approved and which still require work.

The Engineering Manager has complained that the photo session schedule has been changed and that no consideration has been given to the impact this will have on the engineering staff shift pattern.

Column 2

Produce a Product Status Account.
Maintain a record of all copies issued.
Record the link between version and the Issue Report that caused its change.
Notify copy holders of any changes.
Recall and archive superseded product copies.
Retain master products, issuing copies only.
Maintain a record of relationships between products.

Produce a Product Status Account.
Maintain a record of all copies issued.
Record the link between version and the Issue Report that caused its change.
Notify copy holders of any changes.
Recall and archive superseded product copies.
Retain master products, issuing copies only.
Maintain a record of relationships between products.

Produce a Product Status Account.
Maintain a record of all copies issued.
Record the link between version and the Issue Report that caused its change.
Notify copy holders of any changes.
Recall and archive superseded product copies.
Retain master products, issuing copies only.
Maintain a record of relationships between products.

Produce a Product Status Account.
Maintain a record of all copies issued.
Record the link between version and the Issue Report that caused its change.
Notify copy holders of any changes.
Recall and archive superseded product copies.
Retain master products, issuing copies only.
Maintain a record of relationships between products.

Produce a Product Status Account.
Maintain a record of all copies issued.
Record the link between version and the Issue Report that caused its change.
Notify copy holders of any changes.
Recall and archive superseded product copies.
Retain master products, issuing copies only.
Maintain a record of relationships between products.

Produce a Product Status Account.
Maintain a record of all copies issued.
Record the link between version and the Issue Report that caused its change.
Notify copy holders of any changes.
Recall and archive superseded product copies.
Retain master products, issuing copies only.
Maintain a record of relationships between products.

- A. Mastered
- B. Not Mastered

Answer: A

Explanation:

Column 1

As a number of people are involved in the project it is becoming increasingly difficult to keep track of what documentation each person has.

Both current and previous versions of the photo session schedule are in circulation.

A revised list of customers has been issued but it is not clear what was wrong with the previous one.

The Marketing department has lost the chosen label design and no copy was made.

The Marketing department staff cannot say with any certainty which photos were approved and which still require work.

The Engineering Manager has complained that the photo session schedule has been changed and that no consideration has been given to the impact this will have on the engineering staff shift pattern.

Column 2

Produce a Product Status Account.
Maintain a record of all copies issued.
Record the link between version and the Issue Report that caused its change.
Notify copy holders of any changes.
Recall and archive superseded product copies.
Retain master products, issuing copies only.
Maintain a record of relationships between products.

Produce a Product Status Account.
Maintain a record of all copies issued.
Record the link between version and the Issue Report that caused its change.
Notify copy holders of any changes.
Recall and archive superseded product copies.
Retain master products, issuing copies only.
Maintain a record of relationships between products.

Produce a Product Status Account.
Maintain a record of all copies issued.
Record the link between version and the Issue Report that caused its change.
Notify copy holders of any changes.
Recall and archive superseded product copies.
Retain master products, issuing copies only.
Maintain a record of relationships between products.

Produce a Product Status Account.
Maintain a record of all copies issued.
Record the link between version and the Issue Report that caused its change.
Notify copy holders of any changes.
Recall and archive superseded product copies.
Retain master products, issuing copies only.
Maintain a record of relationships between products.

Produce a Product Status Account.
Maintain a record of all copies issued.
Record the link between version and the Issue Report that caused its change.
Notify copy holders of any changes.
Recall and archive superseded product copies.
Retain master products, issuing copies only.
Maintain a record of relationships between products.

Produce a Product Status Account.
Maintain a record of all copies issued.
Record the link between version and the Issue Report that caused its change.
Notify copy holders of any changes.
Recall and archive superseded product copies.
Retain master products, issuing copies only.
Maintain a record of relationships between products.

NEW QUESTION 119

- (Exam Topic 6)

Additional Information

A photographer from Portraits Ltd, a professional photographic company, has taken on the role of Team Manager after taking some time to understand the requirements of the project. A contract for their services has been set up and is being monitored by the Purchasing Manager and a Work Package has been agreed. This contract specifies that the photographer must arrange a meeting with the Engineering Manager to establish a schedule for the photo sessions to minimize the impact on the Engineering staff. This meeting should have occurred by now.

The Engineering Manager was made aware of this requirement but when asked he reported that he has received no communication from the photographer. The Project Manager has tried to call the photographer and has had no response. The Project Manager believes there is a risk that Portraits Ltd are overbooking work and prioritizing other clients' work. If Portraits Ltd do not deliver on schedule the project will be delayed and the expected benefits will be reduced.

The contract is to be reviewed and Portraits Ltd reminded of their agreement.

	Assertion		Reason	
1	The Engineering Manager should have raised the fact that there has been no contact with the photographer as an issue.	True - false	Any forecast to exceed the agreed stage tolerances should be escalated to the Project Board.	True - false
2	As the person monitoring the contract, the Purchasing Manager would be an appropriate owner for the risk.	True - false	A risk owner should be the person most capable of managing the risk.	True - false
3	The photographer should have raised any concerns about their availability for the work as a risk before accepting the Work Package.	True - false	A separate Risk Register should be created for each Work Package to monitor specialist risks associated with the creation of specialist products.	True - false
4	If estimation of the risk shows that it is likely to impact upon time, the Project Manager will need to raise an Issue Report.	True - false	When the impact of a risk has been identified, an Issue Report will be required to implement any agreed risk actions.	True - false
5	Regular Checkpoint Reports from the photographer will help the Project Manager manage the risk.	True - false	Checkpoint Reports should provide early warning of any delay in the photographer's work.	True - false
6	As a Work Package has been agreed with the photographer, responsibility for the risk will automatically have been transferred to this third party.	True - false	When selecting the most appropriate risk response to take, the best option is usually the least expensive.	True - false

- A. Mastered
B. Not Mastered

Answer: A

Explanation:

	Assertion		Reason	
1	The Engineering Manager should have raised the fact that there has been no contact with the photographer as an issue.	True - false	Any forecast to exceed the agreed stage tolerances should be escalated to the Project Board.	True - false
2	As the person monitoring the contract, the Purchasing Manager would be an appropriate owner for the risk.	True - false	A risk owner should be the person most capable of managing the risk.	True - false
3	The photographer should have raised any concerns about their availability for the work as a risk before accepting the Work Package.	True - false	A separate Risk Register should be created for each Work Package to monitor specialist risks associated with the creation of specialist products.	True - false
4	If estimation of the risk shows that it is likely to impact upon time, the Project Manager will need to raise an Issue Report.	True - false	When the impact of a risk has been identified, an Issue Report will be required to implement any agreed risk actions.	True - false
5	Regular Checkpoint Reports from the photographer will help the Project Manager manage the risk.	True - false	Checkpoint Reports should provide early warning of any delay in the photographer's work.	True - false
6	As a Work Package has been agreed with the photographer, responsibility for the risk will automatically have been transferred to this third party.	True - false	When selecting the most appropriate risk response to take, the best option is usually the least expensive.	True - false

NEW QUESTION 124

- (Exam Topic 6)

Additional Information

A photographer from Portraits Ltd, a professional photographic company, has taken on the role of Team Manager after taking some time to understand the

requirements of the project. A contract for their services has been set up and is being monitored by the Purchasing Manager and a Work Package has been agreed. This contract specifies that the photographer must arrange a meeting with the Engineering Manager to establish a schedule for the photo sessions to minimize the impact on the Engineering staff. This meeting should have occurred by now.

The Engineering Manager was made aware of this requirement but when asked he reported that he has received no communication from the photographer. The Project Manager has tried to call the photographer and has had no response. The Project Manager believes there is a risk that Portraits Ltd are overbooking work and prioritizing other clients' work. If Portraits Ltd do not deliver on schedule the project will be delayed and the expected benefits will be reduced. The contract is to be reviewed and Portraits Ltd reminded of their agreement.

The project is now in stage 2. The Project Manager has heard about the possibility of a competitor also producing a calendar to be delivered earlier than the target date for this project. There is a threat that the early release of a competitor's calendar may weaken the impact of the MNO Manufacturing Company calendar, thereby reducing the anticipated benefits of the Calendar project.

Column 1 contains a number of risk responses identified by the Project Manager following an assessment of this risk. Column 2 contains a list of threat response types. For each risk response in Column 1, select from Column 2 the type of response it represents. Each option from Column 2 can be used once, more than once or not at all.

Drop down the right answer.

Column 1	Column 2
Record the risk in the Risk Register and monitor the situation.	<div>▼</div> <div>Avoid</div> <div>Reduce</div> <div>Fallback</div> <div>Transfer</div> <div>Accept</div> <div>Share</div>
Decide not to compete and cancel the project.	<div>▼</div> <div>Avoid</div> <div>Reduce</div> <div>Fallback</div> <div>Transfer</div> <div>Accept</div> <div>Share</div>
Bring the target date of this project forward.	<div>▼</div> <div>Avoid</div> <div>Reduce</div> <div>Fallback</div> <div>Transfer</div> <div>Accept</div> <div>Share</div>
Wait for confirmation of the rival's calendar and, if required, include additional gifts with the calendar as an extra incentive.	<div>▼</div> <div>Avoid</div> <div>Reduce</div> <div>Fallback</div> <div>Transfer</div> <div>Accept</div> <div>Share</div>
Carry on with the project as planned on the basis that the MNO Manufacturing Company calendar is believed to be of better quality.	<div>▼</div> <div>Avoid</div> <div>Reduce</div> <div>Fallback</div> <div>Transfer</div> <div>Accept</div> <div>Share</div>
Add a unique reference number to every calendar and hold a prize draw each month.	<div>▼</div> <div>Avoid</div> <div>Reduce</div> <div>Fallback</div> <div>Transfer</div> <div>Accept</div> <div>Share</div>

- A. Mastered
B. Not Mastered

Answer: A

Explanation:

Column 1

Record the risk in the Risk Register and monitor the situation.

Decide not to compete and cancel the project.

Bring the target date of this project forward.

Wait for confirmation of the rival's calendar and, if required, include additional gifts with the calendar as an extra incentive.

Carry on with the project as planned on the basis that the MNO Manufacturing Company calendar is believed to be of better quality.

Add a unique reference number to every calendar and hold a prize draw each month.

Column 2

Avoid
Reduce
Fallback
Transfer
Accept
Share

Avoid
Reduce
Fallback
Transfer
Accept
Share

Avoid
Reduce
Fallback
Transfer
Accept
Share

Avoid
Reduce
Fallback
Transfer
Accept
Share

Avoid
Reduce
Fallback
Transfer
Accept
Share

Avoid
Reduce
Fallback
Transfer
Accept
Share

NEW QUESTION 129

- (Exam Topic 7)

If the Project Board are too busy to authorize all change requests themselves, they can appoint?

- A. A Change Authority
- B. A Change Board
- C. A Change Committee
- D. A Change Budget

Answer: C

NEW QUESTION 132

- (Exam Topic 7)

Scenario:

The Ministry of Food Hygiene (MFH) has a quality management system which contains a document control process to manage all documentation requirements.

The document control process was created by the MFH Quality Manager, who now maintains all of MFH's documents and performs an organization-wide configuration management role. The MFH Quality Manager will administer the configuration management procedure for the Restructuring project since this must comply with the MFH document control process.

According to PRINCE2, which statement about the Configuration Management Strategy for the Outsourcing project is correct?

- A. Every project needs a Configuration Management Strategy, even if the organization has existing configuration management standards, because every project has different circumstances.
- B. A separate Configuration Management Strategy will be required for each of the suppliers within this project because each will have a different way of managing and storing products.
- C. A Configuration Management Strategy is unnecessary for this project because the MFH document control process is documented.
- D. It is acceptable simply to reference this in the Quality Management Strategy.

Answer: A

NEW QUESTION 134

- (Exam Topic 8)

Project Scenario

Calendar Project (Note: The companies and people within the scenario are fictional.)

There has been a reduction in the number of orders at the MNO Manufacturing Company due in part to the increased marketing activities of its competitors. To help counter this, the company has decided to create a promotional calendar for next year for all its current and prospective customers. The end product of this project will be a prepared calendar pack, ready for printing. The design of the calendar will be similar to one sent out previously, and must reflect the company image as described in the existing corporate branding standards. Another project is currently producing a new company logo when is to be printed on each page of the promotional calendar. The prepared calendar pack will consist of:

- Design for each month - correctly showing at public holidays and new company logo
- Selected paper and selected envelope - for printing and mailing the calendar
- Chosen label design - a competition to design a label will be held as part of this project
- List of customers - names and addresses of customers to whom the calendar will be sent.

The project is currently in initiation and will have two further stages: Stage 2 will include the activities to:

- Create the customer list using information from the Accounts and Marketing departments
- Confirm compliance with the Data Protection Legislation
- Create a design for each month - this will be done by the internal creative team
- Select and appoint a professional photographer
- Gather photograph design ideas from previous project and agree photographic session schedule
- Prepare a production cost forecast
- Select paper and envelope. Stage 3 will include the activities to:
- Produce and select the professionally-taken photographs
- Hold the label design competition and choose the label design
- Assemble the prepared calendar pack.

A production cost forecast, based on the options and costs for the paper, envelope, printing and marketing of the calendar is to be produced in stage 2. However, the actual production and distribution of the calendars is not within the scope of the project. The production cost forecast will be reviewed by the Project Board to determine whether the project should continue.

It is now 05 October and the prepared calendar pack must be delivered to the print company by 30 November, to enable printing and distribution of the calendar in time for Christmas. The cost of the activities to develop the specialist products and the cost of the project management activities are estimated to be £20,000.

There is a project time tolerance of +1 week / -2 weeks and a project cost tolerance of +£6,000 / -£6,000. A change budget of £500 has been allocated but there is no risk budget.

The team member collating the list of customers has now forecast that it will NOT be complete by the end of this stage as originally planned, due to a number of new prospective customers' details not yet being available. What action should the team member take?

- A. Report the forecast delay in the next Checkpoint Report to the Executive.
- B. Add the product to the next Stage Plan in order to allocate additional resources and complete the work.
- C. Make an entry in the Risk Register so the Project Manager can decide on appropriate action.
- D. Raise an issue to inform the Project Manager.

Answer: D

NEW QUESTION 137

- (Exam Topic 8)

Project Scenario

Calendar Project (Note: The companies and people within the scenario are fictional.)

There has been a reduction in the number of orders at the MNO Manufacturing Company due in part to the increased marketing activities of its competitors. To help counter this, the company has decided to create a promotional calendar for next year for all its current and prospective customers. The end product of this project will be a prepared calendar pack, ready for printing. The design of the calendar will be similar to one sent out previously, and must reflect the company image as described in the existing corporate branding standards. Another project is currently producing a new company logo when is to be printed on each page of the promotional calendar. The prepared calendar pack will consist of:

- Design for each month - correctly showing at public holidays and new company logo
- Selected paper and selected envelope - for printing and mailing the calendar
- Chosen label design - a competition to design a label will be held as part of this project
- List of customers - names and addresses of customers to whom the calendar will be sent.

The project is currently in initiation and will have two further stages: Stage 2 will include the activities to:

- Create the customer list using information from the Accounts and Marketing departments
- Confirm compliance with the Data Protection Legislation
- Create a design for each month - this will be done by the internal creative team
- Select and appoint a professional photographer

- Gather photograph design ideas from previous project and agree photographic session schedule
- Prepare a production cost forecast
- Select paper and envelope. Stage 3 will include the activities to:
- Produce and select tie professionally-taken photographs
- Hold the label design competition and choose the label design
- Assemble the prepared calendar pack.

A production cost forecast, based on the options and costs for the paper, envelope, printing and marketing of the calendar is to be produced in stage 2. However, the actual production and distribution of the calendars is not within the scope of the project. The product cost forecast will be reviewed by the Project Board to determine whether tie project should continue.

It is now 05 October and the prepared calendar pack must be delivered to the print company by 30 November, to enable printing and distribution of the calendar in time for Christmas. The cost of the activities to develop the specialist products and the cost of the project management activities are estimated to be £20,000.

There is a project time tolerance of +1 week /-2 weeks and a project cost tolerance of +£6,000 / -£6,000. A change budget of £500 has been allocated but there is no risk budget.

Lines 1 to 6 in the table below consist of an assertion statement and a reason statement For each line identify the appropriate option, from options 1 to 6, that applies. Each option can be used once, more than once or not at all.

	Assertion		Reason	
1	The label design competition should be planned and managed as two management stages.	True-False	A decision can only be made by the Project Board at the end of a management stage.	True-False
2	Quality tolerances allocated to the photos can be used to remedy a forecast threat to time tolerance.	True-False	Any forecast threat to time tolerance should first be resolved by use of any available quality tolerance.	True-False
3	A suitable point for a stage boundary would be after the production cost forecast has been produced.	True-False	A stage boundary represents a go/no go decision point.	True-False
4	With +1 week 1-2 weeks time tolerance, the project is permitted to finish two weeks later than 30 November.	True-False	A negative project time tolerance indicates the total permissible delay to a project schedule before an exception situation occurs.	True-False
5	If the project is forecast to exceed the cost tolerance of +£6k, the Project Manager should send an Exception Report straight to corporate management.	True-False	If the forecast is for project tolerances to be exceeded, the Project Board no longer has the authority to continue with the project.	True-False
6	The production cost forecast should be reviewed by the Project Board during the Directing a Project process to determine whether the project should continue.	True-False	The Project Board reviews all products at the end of each stage.	True-False

- A. Mastered
- B. Not Mastered

Answer: A

Explanation:

	Assertion		Reason	
1	The label design competition should be planned and managed as two management stages.	True-False	A decision can only be made by the Project Board at the end of a management stage.	True-False
2	Quality tolerances allocated to the photos can be used to remedy a forecast threat to time tolerance.	True-False	Any forecast threat to time tolerance should first be resolved by use of any available quality tolerance.	True-False
3	A suitable point for a stage boundary would be after the production cost forecast has been produced.	True-False	A stage boundary represents a go/no go decision point.	True-False
4	With +1 week 1-2 weeks time tolerance, the project is permitted to finish two weeks later than 30 November.	True-False	A negative project time tolerance indicates the total permissible delay to a project schedule before an exception situation occurs.	True-False
5	If the project is forecast to exceed the cost tolerance of +£6k, the Project Manager should send an Exception Report straight to corporate management.	True-False	If the forecast is for project tolerances to be exceeded, the Project Board no longer has the authority to continue with the project.	True-False
6	The production cost forecast should be reviewed by the Project Board during the Directing a Project process to determine whether the project should continue.	True-False	The Project Board reviews all products at the end of each stage.	True-False

NEW QUESTION 140

.....

Thank You for Trying Our Product

* 100% Pass or Money Back

All our products come with a 90-day Money Back Guarantee.

* One year free update

You can enjoy free update one year. 24x7 online support.

* Trusted by Millions

We currently serve more than 30,000,000 customers.

* Shop Securely

All transactions are protected by VeriSign!

100% Pass Your PRINCE2-Practitioner Exam with Our Prep Materials Via below:

<https://www.certleader.com/PRINCE2-Practitioner-dumps.html>