

Exam Questions MS-100

Microsoft 365 Identity and Services

<https://www.2passeasy.com/dumps/MS-100/>



NEW QUESTION 1

- (Exam Topic 1)

You company has a Microsoft Azure Active Directory (Azure AD) tenant that contains the users shown in the following table.

The tenant includes a security group named Admin1. Admin1 will be used to manage administrative accounts. You need to identify which users can perform the following administrative tasks:

- ☒ Create guest user accounts.
- ☒ Add User3 to Admin1.

Which users should you identify for each task? To answer, select the appropriate options in the answer area. NOTE: Each correct selection is worth one point.

Create guest user accounts:

▼
User4 only
User2 only
User3 only
User2 and User3 only
User1, User2 and User3 only
User1, User2, User3, and User4

Add User3 to Admin1:

▼
User4 only
User2 only
User3 only
User2 and User3 only
User1, User2 and User3 only
User1, User2, User3, and User4

- A. Mastered
- B. Not Mastered

Answer: A

Explanation:

References:

<https://docs.microsoft.com/en-us/azure/active-directory/users-groups-roles/directory-assign-admin-roles>

NEW QUESTION 2

- (Exam Topic 1)

Your company recently purchased a Microsoft 365 subscription.

You enable Microsoft Azure Multi-Factor Authentication (MFA) for all 500 users in the Azure Active Directory (Azure AD) tenant.

You need to generate a report that lists all the users who completed the Azure MFA registration process. What is the best approach to achieve the goal? More than one answer choice may achieve the goal. Select the BEST answer.

- A. From Azure Cloud Shell, run the Get-AzureADUser cmdlet.
- B. From Azure Cloud Shell, run the Get-MsolUser cmdlet
- C. From the Azure Active Directory admin center, use the MFA Server blade.
- D. From the Azure Active Directory admin center, use the Risky sign-ins blade.

Answer: B

Explanation:

References:

<https://docs.microsoft.com/en-us/azure/active-directory/authentication/howto-mfa-reporting>

NEW QUESTION 3

- (Exam Topic 1)

Your network contains an Active Directory domain named contoso.com. All users authenticate by using a third-party authentication solution.

You purchase Microsoft 365 and plan to implement several Microsoft 365 services. You need to recommend an identity strategy that meets the following requirements:

- ☒ Provides seamless SSO
- ☒ Minimizes the number of additional servers required to support the solution
- ☒ Stores the passwords of all the users in Microsoft Azure Active Directory (Azure AD)
- ☒ Ensures that all the users authenticate to Microsoft 365 by using their on-premises user account You are evaluating the implementation of federation.

Which two requirements are met by using federation? Each correct answer presents a complete solution. NOTE: Each correct selection is worth one point.

- A. minimizes the number of additional servers required to support the solution
- B. provides seamless SSO
- C. stores the passwords of all the users in Azure AD
- D. ensures that all the users authenticate to Microsoft 365 by using their on-premises user account.

Answer: BD

NEW QUESTION 4

- (Exam Topic 1)

Your network contains an Active Directory forest named local.

You have a Microsoft 365 subscription. You plan to implement a directory synchronization solution that will use password hash synchronization.

From the Microsoft 365 admin center, you verify the contoso.com domain name. You need to prepare the environment for the planned directory synchronization solution.

What should you do first?

- A. From the public DNS zone of contoso.com, add a new mail exchanger (MX) record.
- B. From Active Directory Domains and Trusts, add contoso.com as a UPN suffix
- C. From the Microsoft 365 admin center, verify the contoso.com domain name.
- D. From Active Directory Users and Computers, modify the UPN suffix for all users.

Answer: B

NEW QUESTION 5

- (Exam Topic 1)

Your network contains an on-premises Active Directory domain. You have a Microsoft 365 subscription.

You implement a directory synchronization solution that uses pass-through authentication.

You configure Microsoft Azure Active Directory (Azure AD) smart lockout as shown in the following exhibit.

The screenshot shows the Azure AD Smart Lockout configuration interface. At the top, there are 'Save' and 'Discard' buttons. The 'Custom smart lockout' section has two input fields: 'Lockout threshold' with the value '5' and 'Lockout duration in seconds' with the value '60'. Below this is the 'Custom banned passwords' section, where 'Enforce custom list' is a toggle set to 'Yes'. A text area below it contains a list of banned passwords: 'password', 'Pa\$\$w0rd', 'Pa55w0rd', and 'Contoso'. At the bottom is the 'Password protection for Windows Server Active Directory' section, where 'Enable password protection on Windows Server Active Directory' is a toggle set to 'Yes', and 'Mode' is a dropdown menu set to 'Audit'.

You discover that Active Directory users can use the passwords in the custom banned passwords list. You need to ensure that banned passwords are effective for all users.

Which three actions should you perform? Each correct answer presents part of the solution. NOTE: Each correct selection is worth one point.

- A. From a domain controller, install the Azure AD Password Protection Proxy.
- B. From a domain controller, install the Microsoft AAD Application Proxy connector.
- C. From Custom banned passwords, modify the Enforce custom list setting.
- D. From Password protection for Windows Server Active Directory, modify the Mode setting.
- E. From all the domain controllers, install the Azure AD Password Protection DC Agent.
- F. From Active Directory, modify the Default Domain Policy.

Answer: ACE

NEW QUESTION 6

- (Exam Topic 1)

Your company has a Microsoft 365 subscription.

You plan to move several archived PST files to Microsoft Exchange Online mailboxes. You need to create an import job for the PST files.

Which three actions should you perform before you create the import job? Each correct answer presents part of the solution.

NOTE: Each correct selection is worth one point.

- A. Create a Microsoft Azure Storage account.
- B. From Security & Compliance, retrieve the SAS key.
- C. Run azcopy.exe to copy the PST files to Microsoft Azure Storage
- D. Use Microsoft Azure Storage Explorer to copy the PST files to Azure Storage.
- E. Create a PST import mapping file.

Answer: BCE

Explanation:

References:

<https://docs.microsoft.com/en-us/office365/securitycompliance/use-network-upload-to-import-pst-files>

NEW QUESTION 7

- (Exam Topic 1)

You have a Microsoft 365 subscription.

You need to prevent phishing email messages from being delivered to your organization. What should you do?

- A. From the Exchange admin center, create an anti-malware policy.
- B. From Security & Compliance, create a DLP policy.
- C. From Security & Compliance, create a new threat management policy.
- D. From the Exchange admin center, create a spam filter policy.

Answer: C

Explanation:

References:

<https://docs.microsoft.com/en-us/office365/securitycompliance/set-up-anti-phishing-policies>

NEW QUESTION 8

- (Exam Topic 1)

You recently migrated your on-premises email solution to Microsoft Exchange Online and are evaluating which licenses to purchase.

You want the members of two groups named IT and Managers to be able to use the features shown in the following table.

Feature	Available to
Microsoft Azure Active Directory (Azure AD) conditional access	IT group, Managers group
Microsoft Azure Active Directory (Azure AD) Privileged Identity Management	IT group

The IT group contains 50 users. The Managers group contains 200 users.

You need to recommend which licenses must be purchased for the planned solution. The solution must minimize licensing costs.

Which licenses should you recommend?

- A. 250 Microsoft 365 E3 only
- B. 50 Microsoft 365 E 3 and 200 Microsoft 365 E5
- C. 250 Microsoft 365 E5 only
- D. 200 Microsoft 365 E3 and 50 Microsoft 365 E5

Answer: D

NEW QUESTION 9

- (Exam Topic 1)

Your company has a Microsoft Azure Active Directory (Azure AD) tenant named contoso.com that includes the users shown in the following table.

Name	Usage location	Membership
User1	United States	Group1, Group2
User2	<i>Not applicable</i>	Group2
User3	<i>Not applicable</i>	Group1
User4	Canada	Group1

Group2 is a member of Group1.

You assign a Microsoft Office 365 Enterprise E3 license to Group1. You need to identify how many Office 365 E3 licenses are assigned. What should you identify?

- A. 1
- B. 2
- C. 3
- D. 4

Answer: C

NEW QUESTION 10

- (Exam Topic 1)

Your on-premises network contains five file servers. The file servers host shares that contain user data. You plan to migrate the user data to a Microsoft 365 subscription.

You need to recommend a solution to import the user data into Microsoft OneDrive. What should you include in the recommendation?

- A. Configure the Migrate of the OneDrive client on your Windows 10 dew
- B. Configure the Sync settings in the OneDrive admin center.
- C. Run the SharePoint Hybrid Configuration Wizard.
- D. Run the SharePoint Migration Tool.

Answer: D

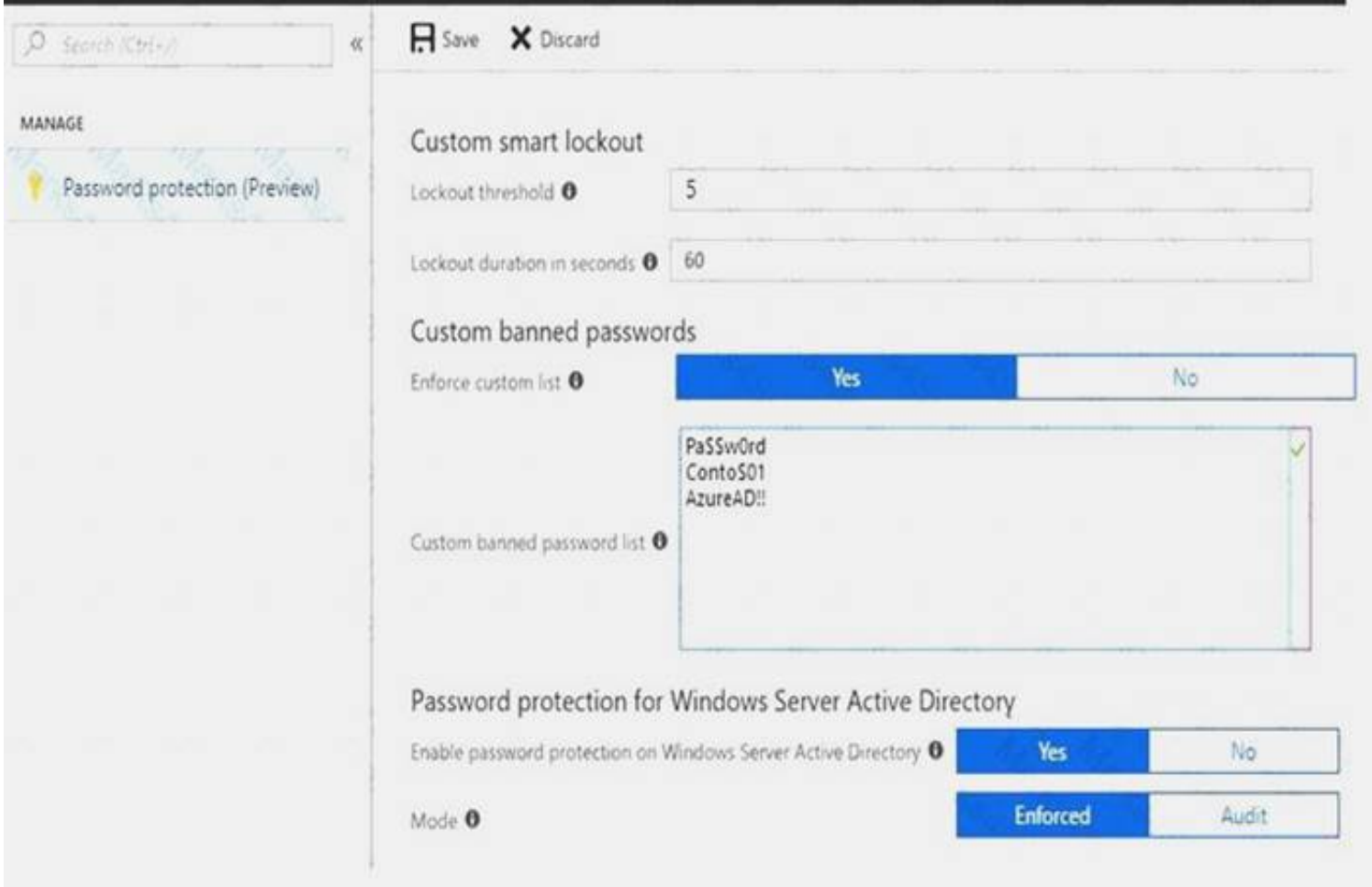
Explanation:

References:

<https://docs.microsoft.com/en-us/sharepointmigration/introducing-the-sharepoint-migration-tool>

NEW QUESTION 10

- (Exam Topic 1)
You have a Microsoft 365 Enterprise subscription.
You create a password policy as shown in the following exhibit.



Use the drop-down menus to select the answer choice that completes each statement based on the information presented in the graphic.
NOTE: Each correct selection is worth one point.

If users are locked out of their account, they have [answer choice].

five sign-in attempts each subsequent minute

one sign-in attempt each subsequent minute

five sign-in attempts every five minutes

one sign-in attempt every five minutes

Users can create a password of [answer choice].

Password11

ContoS01Pa\$\$word

AzureAD!!111

pa\$\$w0rd

- A. Mastered
- B. Not Mastered

Answer: A

Explanation:
References:
<https://docs.microsoft.com/en-us/azure/active-directory/authentication/concept-password-ban-bad>

NEW QUESTION 12

- (Exam Topic 1)
You have a Microsoft 365 subscription. All users have client computers that run Windows 10 and have Microsoft Office 365 ProPlus installed.
Some users in the research department work for extended periods of time without an Internet connection. How many days can the research department users remain offline before they are prevented from editing Office documents?

- A. 10
- B. 30
- C. 90
- D. 120

Answer: B

NEW QUESTION 15

- (Exam Topic 1)
Your network contains an Active Directory forest named adatum.local. The forest contains 500 users and uses adatum.com as a UPN suffix.
You deploy a Microsoft 365 tenant.
You implement directory synchronization and sync only 50 support users.

You discover that five of the synchronized users have usernames that use a UPN suffix of onmicrosoft.com. You need to ensure that all synchronized identities retain the UPN set in their on-premises user account. What should you do?

- A. From the Microsoft 365 admin center, add adatum.com as a custom domain name.
- B. From Windows PowerShell, run the Set-ADDomain –AllowedDNSSuffixes adatum.com command.
- C. From Active Directory Users and Computers, modify the UPN suffix of the five user accounts.
- D. From the Microsoft 365 admin center, add adatum.local as a custom domain name.

Answer: C

NEW QUESTION 16

- (Exam Topic 1)

Your network contain*, an on-premises Active Directory forest.

You are evaluating the implementation of Microsoft 365 and the deployment of authentication strategy. You need to recommend an authentication strategy that meets the following requirements:

- Allows users to sign in by using smart card-based certificates
- Allows users to connect to on premises and Microsoft 365 services by using SSO Which authentication strategy should you recommend?

- A. password hash synchronization and seamless SSO
- B. federation with Active Directory Federation Services (AD FS)
- C. pass-through authentication and seamless SSO

Answer: B

Explanation:

References:

<https://docs.microsoft.com/en-us/azure/security/azure-ad-choose-authn>

NEW QUESTION 18

- (Exam Topic 1)

Your network contains an Active Directory domain named .Ki.ituin.com that is synced to Microsoft Azure Active Directory (Azure AD).

The domain contains 100 user accounts.

The city attribute for all the users is set to the city where the user resides.

You need to modify the value of the city attribute to the three letter airport code of each city. What should you do?

- A. from Active Directory Administrative Center, select the Active Directory users, and then modify the Property settings.
- B. From the Microsoft 365 admin center, select the users, and then use the Bulk actions option.
- C. From Azure Cloud Shell, run the Get-AzureADUsers, and then use the Bulk actions option.
- D. From Azure Cloud Shell, run the Get-AzureADUser and set-AzureADUser cmdlets.
- D. From Windows PowerShell on a domain controller, run the Get-AzureADUser and Set-AzureADUser cmdlets.

Answer: A

NEW QUESTION 21

- (Exam Topic 1)

Note: This question is part of a series of questions that present the same scenario. Each question in the series contains a unique solution that might meet the stated goals. Some question sets might have more than one correct solution, while others might not have a correct solution.

After you answer a question in this section, you will NOT be able to return to it. As a result, these questions will not appear in the review screen.

Your company has a Microsoft Office 365 tenant.

You suspect that several Office 365 features were recently updated.

You need to view a list of the features that were recently updated in the tenant. Solution: You use Dashboard in Security & Compliance.

Does this meet the goal?

- A. Yes
- B. NO

Answer: B

NEW QUESTION 24

- (Exam Topic 2)

Note: This question is part of a series of questions that present the same scenario. Each question in the series contains a unique solution that might meet the stated goals. Some question sets might have more than one correct solution, while others might not have a correct solution.

After you answer a question in this section, you will NOT be able to return to it. As a result, these questions will not appear in the review screen.

You need to assign User2 the required roles to meet the security requirements. Solution: From the Office 365 admin center, you assign User2 the Security Reader role. From the Exchange admin center, you assign User2 the Help Desk role.

Does this meet the goal?

- A. Yes
- B. NO

Answer: B

NEW QUESTION 28

- (Exam Topic 2)

You need to Add the custom domain name* to Office 365 K> support the planned changes as quickly as possible.

What should you create to verify the domain names successfully?

- A. three alias (CNAME) record

- B. one text (TXT) record
- C. one alias (CNAME) record
- D. three text (TXT) record

Answer: D

NEW QUESTION 30

- (Exam Topic 2)

You need to meet the technical requirements for the user licenses.

Which two properties should you configure for each user? To answer, select the appropriate properties in the answer area.

NOTE: Each correct selection is worth one point.

Identity


Name

User1

User name

User1@Contoso1410.onmicrosoft.com

Object ID

22c31139-c143-4076-a71c-b5d0d5...

First Name

Last Name

User type

Member

Source

Azure Active Directory

Job info

Job title

Department

Manager

Remove Change

Settings

Block sign in

Yes No

Usage location

Contact info

Street address

State or province

Country or region

City

ZIP or postal code

Office phone

Authentication contact info

Phone

Email

Alternate phone

Alternate email

- A. Mastered
- B. Not Mastered

Answer: A

Explanation:

Passing Certification Exams Made Easy

visit - <https://www.2PassEasy.com>

Identity

Name

User1

User name

User1@Contoso1410.onmicrosoft.com

Object ID

22c31139-c143-4076-a71c-b5d0d5...

First Name

Last Name

User type

Member

Source

Azure Active Directory

Job info

Job title

Department

Manager

Remove

Change

Settings

Block sign in

Yes

No

Usage location

Contact info

Street address

State or province

Country or region

City

ZIP or postal code

Office phone

Authentication contact info

Phone

Email

Alternate phone

Alternate email

NEW QUESTION 33

- (Exam Topic 2)

To which Azure AD role should you add User4 to meet the security requirement?

- A. Password administrator
- B. Global administrator
- C. Security administrator
- D. Privileged role administrator

Answer: B

NEW QUESTION 35

- (Exam Topic 2)

Note This question is part of a series of questions that present the same scenario. Each question in the series contains a unique solution that might meet the stated goals. Some question sets might have more than one correct solution, while others might not have a correct solution.

After you answer a question in this section, you will NOT be able to return to it. As a result, these questions will not appear in the review screen.

You need to assign User2 the required roles to meet the security requirements.

Solution: From the Office 365 admin center, you assign User2 the Security Administrator role. From the Exchange admin center, you add User2 to the View-Only Management role.

Does this meet the goal?

- A. Yes
- B. NO

Answer: B

NEW QUESTION 38

- (Exam Topic 3)

Which role should you assign to User1?

- A. Security Administrator
- B. Records Management
- C. Security Reader
- D. Hygiene Management

Answer: C

NEW QUESTION 42

- (Exam Topic 3)

You need to meet the application requirement for App1.

Which three actions should you perform? Each correct answer presents part of the solution. NOTE: Each correct selection is worth one point.

- A. From the Azure Active Directory admin center, configure the application URL settings.
- B. From the Azure Active Directory admin center, add an enterprise application.
- C. On an on-premises server, download and install the Microsoft AAD Application Proxy connector.
- D. On an on-premises server, install the Hybrid Configuration wizard.
- E. From the Microsoft 365 admin center, configure the Software download settings.

Answer: ABC

Explanation:

References:

<https://docs.microsoft.com/en-us/azure/active-directory/manage-apps/application-proxy#how-application-proxy->

NEW QUESTION 46

- (Exam Topic 3)

Which migration solution should you recommend for Project1?

- A. From Exchange Online PowerShell, run the New-MailboxImportRequest cmdlet.
- B. From Exchange Online PowerShell, run the New-MailboxExportRequest cmdlet.
- C. From the Microsoft 365 admin center, start a data migration and click Upload PSST as the data service.
- D. From the Exchange admin center, start a migration and select Remote move migration

Answer: D

NEW QUESTION 49

.....

THANKS FOR TRYING THE DEMO OF OUR PRODUCT

Visit Our Site to Purchase the Full Set of Actual MS-100 Exam Questions With Answers.

We Also Provide Practice Exam Software That Simulates Real Exam Environment And Has Many Self-Assessment Features. Order the MS-100 Product From:

<https://www.2passeasy.com/dumps/MS-100/>

Money Back Guarantee

MS-100 Practice Exam Features:

- * MS-100 Questions and Answers Updated Frequently
- * MS-100 Practice Questions Verified by Expert Senior Certified Staff
- * MS-100 Most Realistic Questions that Guarantee you a Pass on Your FirstTry
- * MS-100 Practice Test Questions in Multiple Choice Formats and Updatesfor 1 Year