

Cisco

Exam Questions 350-501

Implementing and Operating Cisco Service Provider Network Core Technologies



NEW QUESTION 1

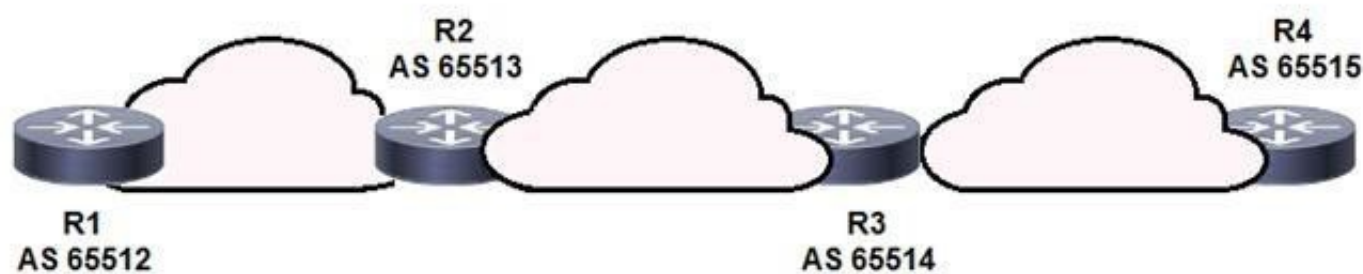


Refer to the exhibit. P3 and PE4 are at the edge of the service provider core and serve as ABR routers. Aggregation areas are on either side of the core. Which statement about the architecture is true?

- A. To support seamless MPLS, the BGP route reflector feature must be disabled.
- B. If each area is running its own IGP, BGP must provide an end-to-end MPLS LSP.
- C. If each area is running its own IGP, the ABR routers must redistribute the IGP routing table into BGP.
- D. To support seamless MPLS, TDP must be used as the label protocol.

Answer: B

NEW QUESTION 2



Refer to the exhibit. BGPsec is implemented on R1, R2, R3, and R4. BGP peering is established between neighboring autonomous systems. Which statement about implementation is true?

- A. BGP updates from the iBGP peers are appended with a community of local-as.
- B. BGP updates from the all BGP peers are appended with a community of no-export.
- C. BGP updates from the eBGP peers are appended with an additional AS path value that is statically set by the domain administrator.
- D. BGP updates from the eBGP peers are appended with a BGPsec attribute sequence that includes a public key hash and digital signature.

Answer: D

NEW QUESTION 3

Which configuration mode do you use to apply the mpls ldp graceful-restart command in IOS XE Software?

- A. MPLS LDP neighbor
- B. interface
- C. MPLS
- D. global

Answer: D

NEW QUESTION 4

After you analyze your network environment, you decide to implement a full separation model for Internet access and MPLS L3VPN services. For which reason do you make this decision?

- A. It enables EGP and IGP to operate independently.
- B. It enables you to choose whether to separate or centralize each individual service.
- C. It is easier to manage a system in which services are mixed.
- D. It requires only one edge router.

Answer: A

NEW QUESTION 5

While implementing TTL security, you issue the PE(config-router-af)#neighbor 2.2.2.2 ttl-security hops 2 command. After you issue this command, which BGP packets does the PE accept?

- A. to 2.2.2.2, with a TTL of 2 or more
- B. from 2.2.2.2, with a TTL of less than 2
- C. to 2.2.2.2, with a TTL of less than 253
- D. from 2.2.2.2, with a TTL of 253 or more

Answer: D

NEW QUESTION 6

Refer to the exhibit. R1 is connected to two service providers and is under a DDoS attack. Which statement about this design is true if URPF in strict mode is configured on both interfaces?

- A. R1 drops all traffic that ingresses either interface that has a FIB entry that exits a different interface.
- B. R1 drops destination addresses that are routed to a null interface on the router.
- C. R1 permits asymmetric routing as long as the AS-PATH attribute entry matches the connected AS.
- D. R1 accepts source addresses on interface gigabitethernet0/1 that are private addresses.

Answer: A

NEW QUESTION 7

Router 1:

```
ip route 192.168.1.0 255.255.255.0 null 0 tag 1
```

```
route-map ddos
```

```
match tag 1
```

```
set local preference 150
```

```
set community no export
```

```
route-map ddos permit 20
```

```
router bgp 65513
```

```
redistribute static route-map ddos
```

Router 2:

```
Interface gigabitethernet0/1
```

```
ip verify unicast reverse-path
```

Refer to the exhibit. An engineer is preparing to implement data plane security configuration. Which statement about this configuration is true?

- A. Router 2 is the router receiving the DDoS attack.
- B. Router 1 must be configured with uRPF for the RTBH implementation to be effective.
- C. Router 1 is the trigger router in a RTBH implementation.
- D. Router 2 must configure a route to null 0 for network 192.168.1.0/24 for the RTBH implementation to be complete.

Answer: A

NEW QUESTION 8

Which statement describes the advantage of a Multi-Layer control plane?

- A. It provides multivendor configuration capabilities for Layer 3 to Layer 1.
- B. It automatically provisions, monitors, and manages traffic across Layer 0 to Layer 3.
- C. It supports dynamic wavelength restoration in Layer 0.
- D. It minimizes human error configuring converged networks.

Answer: A

NEW QUESTION 9

Router 1:

```
ip route 192.0.2.0 255.255.255.0 null 0
```

```
ip route 192.168.1.0 255.255.255.0 null 0 tag 1
```

```
route-map ddos
```

```
match tag 1
```

```
set ip next-hop 192.0.2.1
```

```
set local-preference 150
```

```
set community no export
```

```
route-map ddos permit 20
```

```
router bgp 65513
```

```
redistribute static route-map ddos
```

Router 2:

```
ip route 192.0.2.0 255.255.255.0 null 0
```

Refer to the exhibit. An engineer is preparing to implement data plane security configuration. Which statement about this configuration is true?

- A. Router 1 and Router 2 advertise the route to 192.0.2.0 to all BGP peers.

- B. All traffic to 192.168.1.0/24 is dropped.
- C. All traffic is dropped.
- D. Router 1 drops all traffic with a local-preference set to 150.

Answer: A

NEW QUESTION 10

```
CE1#
interface FastEthernet/0/0/1
description **** HUB CE non router ****
ip address 10.0.12.1 255.255.255.0

router ospf 100
log-adjacency-changes
network 10.0.12.0 0.0.255.255 area 0

CE2#
interface Serial0/0/9
description **** SPOKE CE router ****
encapsulation ppp
ip address 10.0.12.12 255.255.255.0

router ospf 100
log-adjacency-changes
network 10.0.12.0 0.0.255.255 area 0
```

Refer to the exhibit. A network engineer is configuring customer edge routers to finalize a L2VPN over MPLS deployment. Assume that the AToM L2VPN service that connects the two CEs is configured correctly on the service provider network. Which action causes the solution to fail?

- A. OSPF does not work with L2VPN services.
- B. The routing protocol network types are not compatible.
- C. A loopback with a /32 IP address has not been used.
- D. The xconnect statement has not been defined.

Answer: B

NEW QUESTION 10

```
PE-A#show ip bgp vpnv4 vrf Customer-A neighbors 10.10.10.2 routes
BGP table version is 13148019, local router ID is 10.10.10.10
Status codes: s suppressed, d damped, h history, * valid, > best, i - internal,
               r RIB-failure, S Stale, m multipath, b backup-path, f RT-Filter,
               x best-external, a additional-path, c RIB-compressed,
Origin codes: i - IGP, e - EGP, ? - incomplete
RPKI validation codes: V valid, I invalid, N Not found

   Network          Next Hop           Metric LocPrf Weight Path
Route Distinguisher: 65000:1111 (default for vrf Customer-A)
*>  192.168.0/19    10.10.10.2             0         0 4282 65001 ?
*>  192.168.0/17    10.10.10.2             0         0 4282 65001 ?
*>  192.168.0/16    10.10.10.2             0         0 4282 65001 ?

Total number of prefixes 5

PE-A#config t
Enter configuration commands, one per line. End with CNTL/Z.
PE-A(config)#ip prefix-list ALLOW permit 192.168.0.0/16 ge 17 le 19
PE-A(config)#router bgp 65000
PE-A(config-router)#address-family ipv4 vrf Customer-A
PE-A(config-router-af)#neighbor 10.10.10.2 prefix-list ALLOW in
```

Refer to the exhibit. Which three outcomes occur if the prefix list is added to the neighbor? (Choose three.)

- A. 192.168.0.0/16 is denied.
- B. 192.168.0.0/16 is permitted.
- C. 192.168.0.0/19 is permitted
- D. 192.168.0.0/19 is denied.
- E. 192.168.0.0/17 is permitted
- F. 192.168.0.0/17 is denied.

Answer: ACF

NEW QUESTION 12


```
R1
router bgp 65000
router-id 192.168.1.1
neighbor 192.168.1.2 remote-as 65012
neighbor 192.168.1.2 local-as 65112
```

Refer to the exhibit. A network engineer is implementing a BGP protocol. Which effect of the local-as keyword in this configuration is true?

- A. It enables peer 192.168.1.2 to establish a BGP relationship with R1 using AS 65012 without additional configuration.
- B. It enables peer 192.168.1.2 to establish a BGP relationship with R1 using AS 65112 and the VPNv4 address family.
- C. It enables peer 192.168.1.2 to establish a BGP relationship with R1 using AS 65012 and the VPNv4 address family.
- D. It enables peer 192.168.1.2 to establish a BGP relationship with R1 using AS 65112 without additional configuration.

Answer: D

NEW QUESTION 13

A customer of an ISP requests support to setup a BGP routing policy. Which BGP attribute should be configured to choose specific BGP speakers as preferred points for the customer AS?

- A. lowest multi-exit discriminator
- B. highest local preference outbound
- C. lowest local preference inbound
- D. highest local preference inbound

Answer: B

NEW QUESTION 18

Which three OSPF parameters must match before two devices can establish an OSPF adjacency? (Choose three.)

- A. IP address
- B. subnet mask
- C. interface cost
- D. process ID
- E. area number
- F. hello timer setting

Answer: BEF

NEW QUESTION 22

<pre>PE-A ! interface FastEthernet0/0 ip address 10.10.10.1 255.255.255.252 ip ospf authentication null ip ospf 1 area 0 duplex full end ! router ospf 1 log-adjacency-changes passive-interface Loopback0 network 10.10.10.0 0.0.0.3 area 0 default-metric 200 !</pre>	<pre>PE-B ! interface FastEthernet0/0 ip address 10.10.10.2 255.255.255.252 ip ospf authentication null ip mtu 1400 ip ospf 1 area 0 duplex half end ! R1#sho run b router ospf router ospf 1 log-adjacency-changes passive-interface Loopback10 network 10.10.10.0 0.0.0.255 area 0 default-metric 100</pre>
--	--

Refer to the exhibit. Which configuration prevents the OSPF neighbor from establishing?

- A. default-metric
- B. duplex
- C. network statement
- D. mtu

Answer: D

NEW QUESTION 27

```
R1:
!
interface FastEthernet0/0
 ip address 10.1.12.1 255.255.255.0
 duplex full
!
router ospf 1
 network 0.0.0.0 255.255.255.255 area 0
R2:
!
interface FastEthernet0/0
 ip address 10.1.12.2 255.255.255.252
 duplex full
!
router ospf 1
 network 0.0.0.0 255.255.255.255 area 0
```

Refer to the exhibit. R1 and R2 are directly connected with Fast Ethernet interfaces and have the above configuration applied OSPF adjacency is not formed. When the debug ip ospf hello command is issued on R1, these log messages are seen:

```
*Mar 6 21:57:33.051: OSPF-1 HELLO Fa0/0: Mismatched hello parameters from 10.1.12.2
*Mar 6 21:57:33.051: OSPF-1 HELLO Fa0/0: Dead R 40 C 40, Hello R 10 C 10 Mask R
255.255.255.252 C 255.255.255.0
```

Which command can be configured on routers R1 and R2 on f0/0 interfaces to form OSPF adjacency?

- A. ip ospf network point-to-multipoint non-broadcast
- B. ip ospf network non-broadcast
- C. ip ospf network broadcast
- D. ip ospf network point-to-point

Answer: D

NEW QUESTION 30

Which two tasks must you perform when you implement LDP NSF on your network? (Choose two.)

- A. Enable NSF for BGP.
- B. Implement direct connections for LDP peers.
- C. Enable NSF for EIGRP.
- D. Disable Cisco Express Forwarding.
- E. Enable NSF for the link-state routing protocol that is in use on the network.

Answer: BE

NEW QUESTION 35

```
R2#sh cins neighbors detail
Tag TEST:
System Id  Interface  SNPA      State Holdtime  Type Protocol
R1         Fa0/0      ca01.2178.0008 Up    89          L1L2 IS-IS
Area Address(es): 49
Uptime: 00:03:29
NSF capable
Interface name: FastEthernet0/0
```

Refer to the exhibit. On R1, which output does the show isis neighbors command generate?

- A. **Tag TEST:**

System Id	Type	Interface	IP Address	State	Holdtime	Circuit Id
R2	L1	Fa0/0	UP	7		R2.01
R2	L2	Fa0/0	UP	9		R2.01
- B. **Tag TEST:**

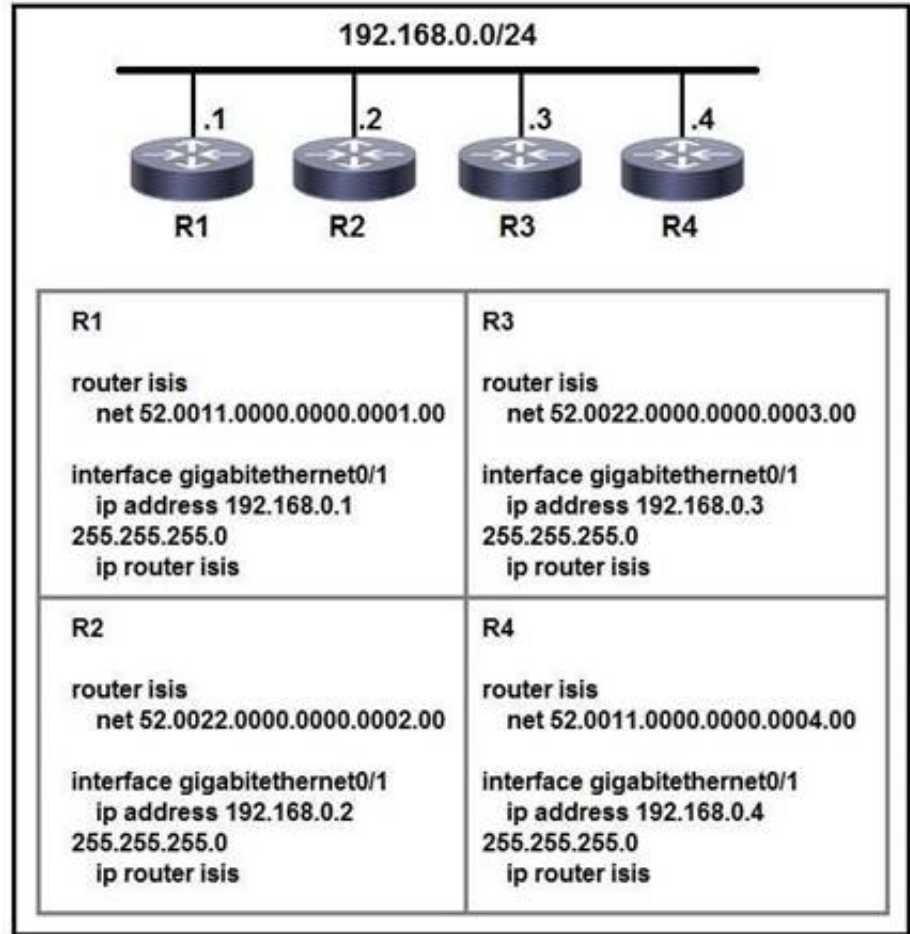
System Id	Type	Interface	IP Address	State	Holdtime	Circuit Id
R2	L2	Fa0/0	UP	7		R2.01
R2	L2	Fa0/0	UP	9		R2.01
- C. **Tag TEST:**

System Id	Type	Interface	IP Address	State	Holdtime	Circuit Id
R2	L2	Fa0/0	UP	9		R2.01
- D. **Tag TEST:**

System Id	Type	Interface	IP Address	State	Holdtime	Circuit Id
R2	L1	Fa0/0	UP	7		R2.01

Answer: A

NEW QUESTION 39



Refer to the exhibit. Which two statements about the IS-IS topology are true? (Choose two.)

- A. R1 and R4 are Level 2 neighbors.
- B. All four routers are operating as Level 1-2 routers.
- C. All four routers are operating as Level 2 routers only.
- D. All four routers are operating as Level 1 routers only.
- E. R1 and R2 are Level 2 neighbors.

Answer: AB

NEW QUESTION 41

“Apr 30 14:33:43.619: %CLNS-4-AUTH_FAIL: ISIS: LAN IIH authentication failed”.

R1#show isis neighbors

Tag TEST:						
System Id	Type	Interface	IP Address	State	Holdtime	Circuit Id
R2	L2	Fa0/0	UP 9			R2.01

R2#show isis neighbors

Tag TEST:						
System Id	Type	Interface	IP Address	State	Holdtime	Circuit Id
R2	L1	Fa0/0	INIT 22			R2.01
R2	L2	Fa0/0	UP 24			R2.01

Refer to the exhibits. R1 and R2 are directly connected and IS-IS routing has been enabled between R1 and R2. R1 generates the above log message periodically. Based on this output, which statement is true?

- A. IS-IS neighbor authentication is failing for Level 2 PDUs only.
- B. IS-IS neighbor authentication is failing for Level 2 first and then for Level 1 PDUs.
- C. IS-IS neighbor authentication is failing for Level 1 and Level 2 PDUs.
- D. IS-IS neighbor authentication is failing for Level 1 PDUs only.

Answer: D

NEW QUESTION 42

DRAG DROP
Drag and drop each NAT64 description from the left onto the correct NAT64 type on the right.
Select and Place:

Answer Area

- It is limited on the number of endpoints.
- It uses address overloading.
- It conserves IPv4 addresses.
- It mandates IPv4-translatable IPv6 address allocation.
- It has 1:N translation.

Stateful

Stateless

- A. Mastered
B. Not Mastered

Answer: A

Explanation:

Answer Area

- It is limited on the number of endpoints.
- It uses address overloading.
- It conserves IPv4 addresses.
- It mandates IPv4-translatable IPv6 address allocation.
- It has 1:N translation.

Stateful

It has 1:N translation.

It conserves IPv4 addresses.

It uses address overloading.

Stateless

It is limited on the number of endpoints.

It mandates IPv4-translatable IPv6 address allocation.

NEW QUESTION 45

How much must the MTU be increased when configuring the 802.1q VLAN tag?

- A. 2 bytes
B. 4 bytes
C. 8 bytes
D. 12 bytes

Answer: B

NEW QUESTION 48

Egress PE NAT is being used via a single centralized router to provide Internet access to L3VPN customers. Which description of the NAT operation is true?

- A. The NAT table contains a field to identify the inside VRF of a translation.
B. Multiple address pools are needed for the same L3VPN because each site has a separate NAT.
C. The different L3VPNs using the Internet access must not have IP overlaps internally.
D. Users in different VRFs cannot share the same outside global IP address.

Answer: A

NEW QUESTION 51


```
interface gigabitethernet1/0/1
switchport mode access
switchport access vlan 5
channel-group 1 mode desirable
```

Refer to the exhibit. An engineer is preparing to implement link aggregation configuration. Which statement about this configuration is true?

- A. The switch port negotiates an EtherChannel if it receives LACP packets from a connected peer running passive mode.
- B. The switch port actively sends packets to negotiate an EtherChannel using PAgP.
- C. The switch port passively negotiates an EtherChannel if it receives PAgP packets from a connected peer.
- D. The switch port accepts LACP and PAgP packets from a connected peer and negotiate an EtherChannel using the common EtherChannel mode.

Answer: B

NEW QUESTION 54

You are writing an RPL script to accept routes only from certain autonomous systems. Consider this code:

```
RP/0/RP0/CPU0:router(config-rpl)# if as-path in (ios-regex '.*77$') RP/0/RP0/CPU0:router(config-rpl-if)# pass RP/0/RP0/CPU0:router(config-rpl-if)# endif
```

If you apply this code to BGP filters, which effect does the code have on your router?

- A. denies routes from AS 7070
- B. allows routes from AS 7077
- C. denies routes from AS 7007
- D. allows routes from AS 770

Answer: B

NEW QUESTION 56

How can shared services in an MPLS Layer 3 VPN provide Internet access to the Customers of a central service provider?

- A. Static routes on CE routers allow route leakage from a PE global routing table.
- B. The CE router can establish a BGP peering to a PE router and use the PE device to reach the Internet.
- C. The customer VRF uses route targets to import and export routes to and from a shared services VRF.
- D. Route distinguishers are used to identify the routes that CEs can use to reach the Internet.

Answer: C

NEW QUESTION 58

```
R1

ip cef distributed
mpls ldp graceful-restart
interface GigabitEthernet 0/0/1
 mpls ip
 mpls label protocol ldp
```

Refer to the exhibit Which effect of this configuration is true?

- A. R1 can support a peer that is configured for LDP SSO/NSF as the peer recovers from an outage.
- B. R1 can support a graceful restart operation on the peer, even if graceful restart is disabled on the peer.
- C. R1 can failover to any peer.
- D. R1 can failover only to a peer that is configured for LDF SSO/NSF.

Answer: A

NEW QUESTION 60

In an MPLS network, which protocol can be used to distribute a Segment Prefix?

- A. LDP
- B. EIGRP
- C. OSPF
- D. RSVP-TE

Answer: C

NEW QUESTION 61

```
RP/0/0/CPU0:iosxrv-1#show mpls ldp discovery brief
Sat Apr 2 22:43:11.362 UTC

Local LDP Identifier: 192.168.0.2:0
```

Discovery Source Session	VRF Name	Peer LDP Id	Holdtime	
Gi0/0/1	default	192.168.0.3:0	15	Y
Gi0/0/2	default	192.168.0.4:0	15	Y
Gi0/0/3	default	192.168.0.5:0	15	Y
Tgt:192.168.0.1	default	192.168.0.1:0	90	Y
Tgt:192.168.0.3	default	192.168.0.3:0	90	Y
Tgt:192.168.0.5	default	-	-	N

Refer to the exhibit. With which router does IOSXRV-1 have LDP session protection capability enabled but session hold up is not active?

- A. 192.168.0.4
- B. 192.168.0.5
- C. 192.168.0.1
- D. 192.168.0.3

Answer: B

NEW QUESTION 65

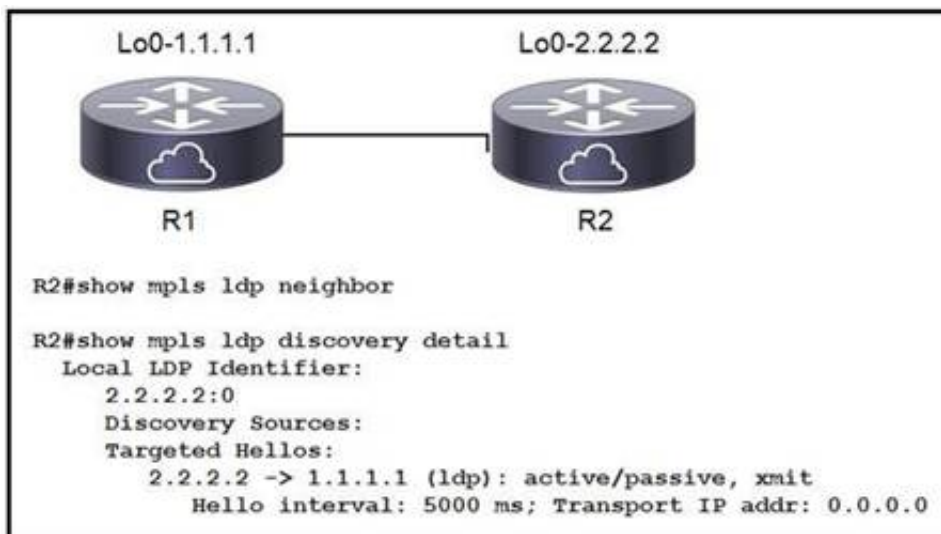
```
mpls label protocol ldp
mpls ldp router-id loopback 0
mpls ip
ip cef
```

Refer to the exhibit. A network operator working for service provider with an employee id: 1234:56:789 applied this configuration to a router. Which additional step should the engineer use to enable LDP?

- A. Enable MPLS LDP on the interface.
- B. Disable Cisco Express Forwarding globally.
- C. Delete the static router ID.
- D. Configure the both keyword to enable LDP globally.

Answer: A

NEW QUESTION 66



Refer to the exhibit. When implementing an LDP protocol, an engineer experienced an issue between two directly connected routers and noticed that no LDP neighbor exists for 1.1.1.1. Which factor should be the reason for this situation?

- A. LDP needs to be enabled on the R2 loopback interface.
- B. LDP needs to be enabled on the R2 physical interface.
- C. R2 does not see any hellos from R1.
- D. R2 sees the wrong type of hellos from R1.

Answer: B

NEW QUESTION 71

```
RP/0/RSP0/CPU0:JFK-PE#show mpls ldp bindings 192.168.10.10/32
Fri Nov 11 21:02:33.124 UTC
192.168.10.10/32, rev 2
  Local bindings: label: ImpNull
  Remote bindings: (2 peers)
    Peer          Label
    -----
    10.10.10.2:0   562656
    10.10.10.5:0   378337
```

Refer to the exhibit. After implementing a new design for the network, a technician reviews the pictures CLI output as part of the MOP. Which two elements describe what the technician can ascertain from the ImpNull output? (Choose two.)

- A. Ultimate Hop Popping is in use for the prefix displayed.
- B. Penultimate Hop Popping is in use for the prefix displayed.
- C. Label 0 is used for the prefix displayed, but will not be part of the MPLS label stack for packets destined for 192.168.10.10.
- D. Label 3 is in use for the prefix displayed and will be part of the MPLS label stack for packets destined for 192.168.10.10.
- E. Label 0 is used for the prefix displayed and will be part of the MPLS label stack for packets destined for 192.168.10.10.

Answer: BE

NEW QUESTION 72

A router RP is configured to perform MPLS LDP graceful restart.

Which three steps are included when the RP sends an LDP initialization message to a neighbor to establish an LDP session? (Choose three.)

- A. Learn from Neighbor (N) flag, set to 1
- B. Recovery Time field
- C. Type-9 LSA
- D. Reconnect Timeout field
- E. Graceful restart capability in OPEN message
- F. Learn from Network (L) flag, set to 1

Answer: BDF

NEW QUESTION 74

```
class-map WEB
  match protocol http
```

Refer to the exhibit. Which statement describes the effect of this configuration?

- A. It matches HTTP traffic for use in a policy map.
- B. It applies a service policy to all interfaces remarking HTTP traffic.
- C. It creates an ACL named WEB that filters HTTP traffic.
- D. It modifies the default policy map to allow all HTTP traffic through the router.

Answer: A

NEW QUESTION 75

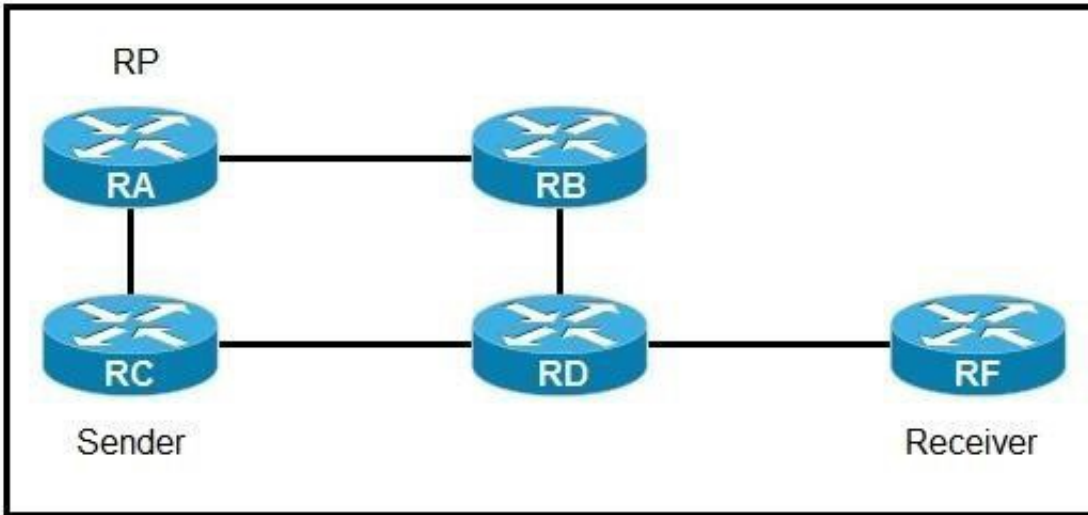
```
class-map match-any class1
  match-protocol ipv4
  match qos-group 4
```

Refer to the exhibit. A network engineer is implementing QoS services. Which two statements about the qos-group keyword on Cisco IOS XR are true? (Choose two.)

- A. It marks packets for end-to-end QoS policy enforcement across the network.
- B. QoS group marking occurs on the ingress.
- C. The QoS group numbering corresponds to priority level.
- D. QoS group can be used in fabric QoS policy as match criteria.
- E. It cannot be used with priority traffic class.

Answer: BD

NEW QUESTION 79



Refer to the exhibit. If router A is the RP, which PIM mode can you configure so that devices will send multicast traffic toward the RP?

- A. PIM-SM
- B. BIDIR-PIM
- C. PIM-SSM
- D. PIM-DM

Answer: A

NEW QUESTION 80

```
route-policy qppb-as6000
if as-path in (ios-regex '61100, 61200, 61300') then
set qos-group 10

router bgp 100 bgp
table-policy qppb-as6000
```

Refer to the exhibit. Which statement supports QPPB implementation?

- A. QPPB policies affect only egress traffic.
- B. QoS policies rely exclusively on BGP attributes to manipulate traffic.
- C. QoS policies are identified in the MPLS forwarding table.
- D. QoS policies use BGP to gain full coverage on the network.

Answer: D

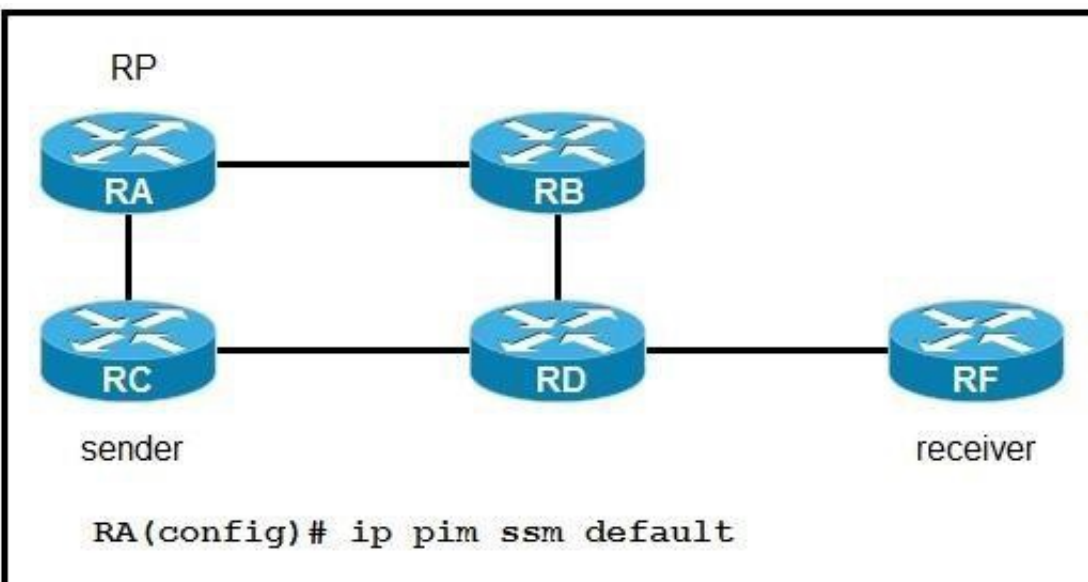
NEW QUESTION 83

Why do packet loops occur during the configuration of BIDIR-PIM?

- A. The network does not support BIDIR-PIM.
- B. The network is partially upgraded to support BIDIR-PIM.
- C. The router has not been configured to advertise itself.
- D. No interface for carrying traffic for multicast groups has been configured.

Answer: B

NEW QUESTION 87



Refer to the exhibit. If router RA is configured as shown, which IPv4 multicast address space does it use?

- A. 224.0.0.0/8
- B. 225.0.0.0/8
- C. 232.0.0.0/8
- D. 239.0.0.0/8

Answer: C

NEW QUESTION 92

Refer to the exhibit. You are configuring an administrative domain in the given multi-vendor environment with PIM-SM. Which feature can you implement so that devices can dynamically learn the RP?

- A. BSR
- B. BIDIP-PIM
- C. Auto-RP
- D. SSM

Answer: C

NEW QUESTION 95

How can a network administrator secure rest APIs?

- A. They can have a general administrator login for multiple users to access that has command entries logged.
- B. They can authenticate user sessions and provide the appropriate privilege level.
- C. They can ensure that user sessions are authenticated using TACACS+ only.
- D. They can allow read and write privileges to all users.

Answer: B

NEW QUESTION 100

Which service is a VNF role?

- A. Network
- B. Firewall
- C. Storage
- D. Compute

Answer: A

NEW QUESTION 102

Which two uses of the YANG data modeling language are true? (Choose two.)

- A. It can be used to model the configuration used by NETCONF operations.
- B. It can be used to access a device by HTTP.
- C. It can be used to replace the OSI model for troubleshooting.
- D. It can be used to shape state data of network elements.
- E. It can be used to replace RESTCONF as a mechanism to install and manipulate configuration.

Answer: AC

NEW QUESTION 106

What do Ansible and SaltStack have in common?

- A. They both have agents running on the client machine.
- B. They both can be designed with more than one master server.
- C. They both use DSL configuration language.
- D. They both use YAML configuration language.

Answer: D

NEW QUESTION 107

Refer to the exhibit. Which statement describes this configuration?

- A. Router 1 has a new data store to collect SNMP information, but configuration must still be done at the CLI only.
- B. Router 1 can be remotely managed by the CLI using Telnet.
- C. Router 1 has its running configuration locked so changes can be made only when the administrator issues a kill session.
- D. Router 1 has a temporary data store where a copy of the running configuration can be manipulated and verified before committing the configuration.

Answer: D

NEW QUESTION 111

```
telemetry model-driven
sensor-group cisco
sensor-path Cisco-IOS-XR-infra-statsd-oper:infra-statistics/interfaces/interface/latest/generic-counters
commit
```

Refer to the exhibit. This configuration is being applied on an IOS XR route. Which statement about this configuration is true?

- A. It is used to create a sensor-group and has a list of YANG models for streaming.
- B. It is used to create a subscription to specify the streaming interval.
- C. It is used to identify MIB entries and has a list of YANG models.
- D. It is used to identify traps for SNMP polling.

Answer: A

NEW QUESTION 115

.....

Thank You for Trying Our Product

We offer two products:

1st - We have Practice Tests Software with Actual Exam Questions

2nd - Questions and Answers in PDF Format

350-501 Practice Exam Features:

- * 350-501 Questions and Answers Updated Frequently
- * 350-501 Practice Questions Verified by Expert Senior Certified Staff
- * 350-501 Most Realistic Questions that Guarantee you a Pass on Your First Try
- * 350-501 Practice Test Questions in Multiple Choice Formats and Updates for 1 Year

100% Actual & Verified — Instant Download, Please Click
[Order The 350-501 Practice Test Here](#)