

PL-900 Dumps

Microsoft Power Platform Fundamentals

<https://www.certleader.com/PL-900-dumps.html>



NEW QUESTION 1

- (Exam Topic 1)

You are building Power Apps apps that use both Dynamics 365 Sales and Microsoft 365.

For each of the following statements, select Yes if the statement is true. Otherwise, select No. NOTE: Each correct selection is worth one point.

Statement	Yes	No
Dynamics 365 Sales and Microsoft 365 must be in the same tenant to allow Single Sign-On (SSO).	<input type="radio"/>	<input type="radio"/>
You must download a product from AppSource to ensure that SSO works with Dynamics 365 Sales and Microsoft 365.	<input type="radio"/>	<input type="radio"/>

- A. Mastered
B. Not Mastered

Answer: A

Explanation:

Box 1: No

When you offer your application for use by other companies through a purchase or subscription, you make your application available to customers within their own Azure tenants. This is known as creating a multi-tenant application.

Box 2: No Reference:

<https://docs.microsoft.com/en-us/azure/active-directory/manage-apps/isv-sso-content>

NEW QUESTION 2

- (Exam Topic 1)

A rapidly growing company wants to empower users to build apps, automate business processes, and analyze data without requiring I expertise or development skills and without increasing IT expenses and dependencies.

You need to recommend tools so that users can accomplish specific tasks.

Which tools should you recommend? To answer, select the appropriate options in the answer area. NOTE: Each correct selection is worth one point.

Scenario	Application
Build automatic workflows that access multiple data sources.	<div><div></div><div>AI Builder</div><div>Power Apps</div><div>Microsoft Flow</div><div>Azure Functions</div><div>Power BI</div></div>
Create custom apps that address specific business needs.	<div><div></div><div>AI Builder</div><div>Power Apps</div><div>Microsoft Flow</div><div>Azure Functions</div><div>Power BI</div></div>
Design insightful data visualizations.	<div><div></div><div>AI Builder</div><div>Power Apps</div><div>Microsoft Flow</div><div>Azure Functions</div><div>Power BI</div></div>

- A. Mastered
B. Not Mastered

Answer: A

Explanation:

Box 1: Microsoft Flow

Microsoft Flow, now called Power Automate, is cloud-based software that allows employees to create and automate workflows and tasks across multiple applications and services without help from developers.

Box 2: Power Apps

PowerApps is a suite of apps, services, connectors and data platform that provides a rapid application development environment to build custom apps for your business needs.

Box 3: Power BI

Power BI is a business analytics solution that lets youvisualizemyour data and share insights across your organization, or embed them in your app or website.

Connect to hundreds of data sources and bring your data to life with live dashboards and reports.

Reference:

<https://docs.microsoft.com/en-us/powerapps/powerapps-overview>

NEW QUESTION 3

- (Exam Topic 1)

A travel company plans to use the Power Platform to create tools that help travel agents book customer travel. You need to recommend solutions for the company. What should you recommend? To answer, drag the appropriate tools to the correct requirements. Each tool may be used once, more than once, or not at all. You may need to drag the split bar between panes or scroll to view content.

NOTE: Each correct selection is worth one point.

Tools

Business rule

Business process flow

Power Automate

Power BI

Answer Area

Requirement

If a customer is travelling with a person under the age of 18, a field must display to collect date of birth for the under 18 traveler only.

Ensure that all travel agents use the same process with all customers.

Send a confirmation email to customers after reservations are complete.

Tool

Tool

Tool

Tool

- A. Mastered
- B. Not Mastered

Answer: A

Explanation:

Reference:

<https://docs.microsoft.com/en-us/power-automate/getting-started>

<https://docs.microsoft.com/en-us/powerapps/maker/common-data-service/data-platform-create-business-rule#:~:>

NEW QUESTION 4

- (Exam Topic 1)

You create a user-owned custom entity by using Common Data Service.

For each of the following statements, select Yes if the statement is true. Otherwise, select No. NOTE: Each correct selection is worth one point.

Statement	Yes	No
You can change the entity ownership from User to Organization-owned.	<input type="radio"/>	<input type="radio"/>
You can create a business rule for a custom entity that can be used in a Flow.	<input type="radio"/>	<input type="radio"/>

- A. Mastered
- B. Not Mastered

Answer: A

Explanation:

Box 1: No

Common Data Service supports two types of record ownership. Organization owned, and User or Team owned. This is a choice that happens at the time the entity is created and can't be changed.

Box 2: Yes

By combining conditions and actions, you can do any of the following with business rules: Set field values

Clear field values

Set field requirement levels Show or hide fields

Enable or disable fields

Validate data and show error messages

Create business recommendations based on business intelligence. Reference:

<https://docs.microsoft.com/en-us/power-platform/admin/wp-security-cds>

NEW QUESTION 5

- (Exam Topic 1)

You are a customer service manager.

You need to implement a Power Apps portal that allows customers to submit cases. Which type of data source is used?

- A. Dynamics 365 Connector
- B. Microsoft SharePoint
- C. Microsoft Azure Storage
- D. Common Data Service

Answer: B

Explanation:

SharePoint can be set up to setup customer feedback.

Note: The PowerApp uses Finance and Operations connector to grab sales order information and SharePoint connector to connect and write the data to SharePoint list.

Reference:

<https://powerapps.microsoft.com/en-us/blog/scenario-2-collect-customer-feedback-in-sharepoint-after-order-delivery/>

NEW QUESTION 6

- (Exam Topic 2)

What is a benefit of deploying Microsoft 365 and Dynamics 365 apps in the same tenant?

- A. Use Common Data Services to connect to application data.
- B. You only need to set up groups in Microsoft 365 for permissions to all data.
- C. Users can access both Microsoft 365 and Dynamics 365 by using Single Sign-on (SSO).

Answer: A

NEW QUESTION 7

- (Exam Topic 2)

You are creating a model-driven Power Apps app. You want to ensure that the app can be used by individuals who have vision impairments.

For each of the following statements, select Yes if the statement is true. Otherwise, select No. NOTE: Each correct selection is worth one point.

Statement	Yes	No
Power Apps apps can be built with hot key support and designed so they do not require a touch screen or mouse.	<input type="radio"/>	<input type="radio"/>
Only model-driven Power Apps have support for using a screen reader without the need for a connector.	<input type="radio"/>	<input type="radio"/>
The accessibility checker can be run for your Power Apps app to provide notifications of accessibility violations as well as tips for making it even more user friendly.	<input type="radio"/>	<input type="radio"/>

- A. Mastered
- B. Not Mastered

Answer: A

Explanation:

Box 1: Yes

You can use keyboard shortcuts in PowerApps. Keyboard shortcuts give you an alternate way to do common tasks instead of using your mouse or tapping with your finger. They help in seamless navigation of the interface.

Box 2: No

The following software combinations are the supported recommendations for consuming PowerApps with a screen reader:

Windows: Microsoft Edge / Narrator macOS: Safari / VoiceOver Android: PowerApps app / Talkback iOS: PowerApps app / VoiceOver

Box 3: Yes
Users who have vision, hearing, or other impairments can use your canvas app more easily and successfully if you consider accessibility as you design how the app looks and behaves. If you're not sure how to make your app more accessible, you can run the Accessibility checker in PowerApps Studio. This tool not only finds potential accessibility issues but also explains why each might be a potential problem for users who have a specific disability and offers suggestions on how to resolve each issue. The Accessibility checker detects screen-reader and keyboard issues for you, and you can find information about how to fix color-contrast issues by using accessible colors.

Reference:

<https://docs.microsoft.com/en-us/powerapps/user/keyboard-shortcuts> <https://docs.microsoft.com/en-us/powerapps/user/screen-reader>

<https://docs.microsoft.com/en-us/powerapps/maker/canvas-apps/accessibility-checker>

NEW QUESTION 8

- (Exam Topic 2)

A company is evaluating Power Platform and has questions about the role that Common Data Service plays in using Power Apps and Power Automate.

For each of the following statements, select Yes if the statement is true. Otherwise, select No. NOTE: Each correct selection is worth one point.

Statement	Yes	No
Model-driven apps require a Common Data Service database.	<input type="radio"/>	<input type="radio"/>
A flow instance can only access one Common Data Service database.	<input type="radio"/>	<input type="radio"/>
Canvas apps require a Common Data Service database.	<input type="radio"/>	<input type="radio"/>

- A. Mastered
- B. Not Mastered

Answer: A

Explanation:

Statement	Yes	No
Model-driven apps require a Common Data Service database.	<input checked="" type="radio"/>	<input type="radio"/>
A flow instance can only access one Common Data Service database.	<input checked="" type="radio"/>	<input type="radio"/>
Canvas apps require a Common Data Service database.	<input checked="" type="radio"/>	<input type="radio"/>

NEW QUESTION 9

- (Exam Topic 2)

A toy company creates a text classification model in AI Builder to monitor customer feedback for specific key words.

When negative feedback is received for a toy, the company wants to proactively perform engineering reviews for the toy and schedule additional training sessions for workers who produce the toy.

What are two possible ways to achieve the goal? Each correct answer presents a complete solution. NOTE: Each correct selection is worth one point.

- A. Create a canvas app.
- B. Implement the Virtual Agent.
- C. Build a Microsoft Flow.
- D. Use the Common Data Model.

Answer: AC

Explanation:

A (not D): AI Builder comes with:

A ready-to-use business card reader available in canvas as well as in model-driven apps. Business card reader (Canvas)

Business card reader (Model-driven)

Additional canvas components to leverage your AI Builder form processing or object detection models canvas apps.

C: Use the results from your AI model across Power Platform to create end-to-end solutions that meet your business needs, even if you have no coding skills. For example, create a flow that automates document processing in Power Automate, or an app created with PowerApps that predicts whether a supplier will be out of compliance.

Reference:

<https://docs.microsoft.com/en-us/ai-builder/use-in-powerapps-overview>

NEW QUESTION 10

- (Exam Topic 3)

A company plans to display support call metrics on a screen that is visible to all call center staff. You need to recommend solutions to meet the company's requirements.

What should you recommend? To answer, drag the appropriate components to the correct requirements. Each component may be used once, more than once, or not at all. You may need to drag the split bar between panes or scroll to view content.

NOTE: Each correct selection is worth one point.

Components		Requirement		Component
Tile	Theme	Display a chart with incoming calls versus wait time and pin the chart to a dashboard.		<input type="text" value="Component"/>
Template App	Alert	Send a specific user a notification when the number of customer support calls waiting is over 20.		<input type="text" value="Component"/>
Treemap	DirectQuery	Display metrics from different datasets that have related data.		<input type="text" value="Component"/>
Page	Workspace			

- A. Mastered
- B. Not Mastered

Answer: A

Explanation:

Reference:

<https://docs.microsoft.com/en-us/power-bi/create-reports/service-dashboard-tiles> <https://docs.microsoft.com/en-us/power-bi/create-reports/service-set-data-alerts>

<https://docs.microsoft.com/en-us/power-bi/visuals/power-bi-visualization-treemaps>

NEW QUESTION 10

- (Exam Topic 3)

You are a district manager for a large retail organization. You train each store manager to use Power BI to track sales and daily sales targets.

A store manager remembers learning about the Analyze in Excel option but cannot find the option in their Power BI dashboard.

You need to help the user resolve the issue. How should you advise the user?

- A. Install the Power BI Desktop app.

- B. Navigate to the report used by the dashboard.
- C. Select the Spotlight button on the dashboard tile.
- D. Subscribe to the dashboard and follow the email link.

Answer: B

Explanation:

Reference:

<https://docs.microsoft.com/en-us/power-bi/collaborate-share/service-analyze-in-excel>

NEW QUESTION 11

- (Exam Topic 3)

A manufacturing company uses Internet of Things (IoT) devices to monitor the temperature in different parts of their warehouse.

The current IoT monitoring software is extremely outdated and is not user friendly.

You need to view near-real time information from the IoT devices in Power BI Service dashboards. Which tool should you use?

- A. Scheduled refresh dataset
- B. Streaming dataset
- C. Content Pack dataset
- D. Power BI dataflows
- E. Quick Insights

Answer: B

Explanation:

<https://docs.microsoft.com/en-us/power-bi/service-real-time-streaming>

<https://powerbi.microsoft.com/en-us/blog/using-power-bi-real-time-dashboards-to-display-iot-sensor-data-astep-by-step-tutorial/>

NEW QUESTION 12

- (Exam Topic 3)

A company plans to create an information portal that managers can use to view critical information about their teams.

You need to recommend the type of Power BI components that the company should use.

What should you recommend? To answer, drag the appropriate components to the correct requirements. Each component may be used once, more than once, or not at all. You may need to drag the split bar between panes or scroll to view content.

NOTE: Each correct selection is worth one point.

Component types	Answer Area	
	Requirement	Component type
Dashboard		
Report	Display data from a Microsoft Excel workbook that has multiple worksheets into one chart.	Component type
	Display the top departmental goal metrics and alert users when specific thresholds targets are met.	Component type
	Display Sales charts that can be filtered by region.	Component type

- A. Mastered
- B. Not Mastered

Answer: A

Explanation:

Box 1: Report

Reports are more detailed data displayed in many formats like chart, graphs list and in tabular, etc. Box 2: Dashboard

Dashboards are a business key performance indicator view where it displays key values that can change business profits and can be glanced at one screen.

Box 3: Report

Power BI dashboards cannot slice and dice, but reports have many ways to filter and slice.

Note: Power BI dashboards are one placeholder to display the most important decision-making facts to run a business. But reports are more detailed data displayed in many formats like chart, graphs list and in tabular, etc. Reports are based on one dataset or one business unit data for example reports of a store belonging to California.

Reference:

<https://www.educba.com/power-bi-dashboard-vs-report/>

NEW QUESTION 16

- (Exam Topic 3)

You are a district manager for a large retail company. You want to provide sales managers with deeper sales insights to ensure that they can make more informed decisions for their stores.

Store managers must be able to view data in near real-time.

You need to create and share a Power BI dashboard that can be used by the store managers.

Which tools can you use? To answer, drag the appropriate reporting types to the correct requirements. Each reporting type may be used once, more than once, or not at all. You may need to drag the split bar between panes or scroll to view content.

Reporting Types	Requirement	Reporting type
Power BI Desktop only	Create Power BI dashboards that contain a single store's sales information.	Reporting type
Power BI Service only	Share the dashboard with your retail managers.	Reporting type
Power BI Desktop or Power BI Service		

- A. Mastered
- B. Not Mastered

Answer: A

Explanation:

Reference:

<https://docs.microsoft.com/en-us/power-bi/fundamentals/desktop-getting-started>

NEW QUESTION 19

- (Exam Topic 3)

A company needs to create a series of mobile applications to empower their field engineers to accomplish several tasks with varying degrees of complexity.

Match each option to its answer.

Instructions: To answer, drag the appropriate app type from the column on the left to its definition on the right. Each app type may be used once, more than once, or not at all.

NOTE: Each correct match is worth one point.

App types	Definition	App type
model-driven	Quickly create apps for very complex business processes with very little or no code.	App type
dashboard		
dataset	Create simple apps with a highly customizable user interface layouts.	App type
canvas		

- A. Mastered
- B. Not Mastered

Answer: A

Explanation:

Box 1: canvas

Both model-driven and canvas apps allow you to easily build business apps. They both share access to the Common Data Service providing standard and custom entities. Canvas apps start with your user experience, crafting a highly tailored interface with the power of a blank canvas and connecting it to 200 data sources. Canvas apps can be built for web, mobile, and tablet applications. Model-driven apps start with your data model – building up from the shape of your core business data and processes in the Common Data Service to model forms, views, and other components. Model-driven apps automatically generate great UI that is responsive across devices.

Box 2: model-driven Reference:

<https://powerapps.microsoft.com/sv-se/blog/introducing-model-driven-apps/>

NEW QUESTION 21

- (Exam Topic 3)

A carpet cleaning company uses Dynamics 365 Sales.

The process for entering customer information during onsite sales calls is very complicated. The company wants a simplified screen that allows salespeople to capture the customer name, phone number, and other information while speaking to the customer.

You need to recommend a solution that works on various types of mobile devices. What should you recommend?

- A. Common Data Service
- B. Microsoft Flow
- C. AI Builder
- D. Canvas app
- E. Power BI

Answer: E

Explanation:

Reference:

<https://powerapps.microsoft.com/en-us/build-powerapps/>

NEW QUESTION 23

- (Exam Topic 3)

You are using Dynamics 365 Sales.

You need to pull data into a Power BI report for your team. The City and State columns must be combined to form one column on the report.

Which function would you use? Each correct answer presents a complete solution. NOTE: Each correct selection is worth one point.

- A. Use Power Query to merge columns.
- B. Import the data.18912E1457D5D1DDCBD40AB3BF70D5D
- C. Export data to Microsoft Excel.
- D. Create a view.

Answer: A

Explanation:

Reference:

<https://docs.microsoft.com/en-us/power-bi/desktop-shape-and-combine-data>

NEW QUESTION 24

- (Exam Topic 3)

A company manages a chain of retail stores. The company stores a list of retail store names and numbers in one Power BI table. The company stores sales transaction data including a transaction ID in another table.

The transaction ID includes the store number.

You need to show the store name for all retail transactions in all Power BI reports. Which tool should you use?

- A. Query Editor
- B. Power BI Service
- C. Microsoft Excel
- D. Data Connector

Answer: A

Explanation:

Power BI Desktop comes with Query Editor, where you can connect to one or many data sources, shape and transform the data to meet your needs, then load that model into Power BI Desktop.

Reference:

<https://docs.microsoft.com/en-us/power-bi/desktop-query-overview>

NEW QUESTION 25

- (Exam Topic 3)

You create a Power BI dashboard that displays data from Dynamics 365 Customer Engagement. You need to share the Power BI dashboard with coworkers.

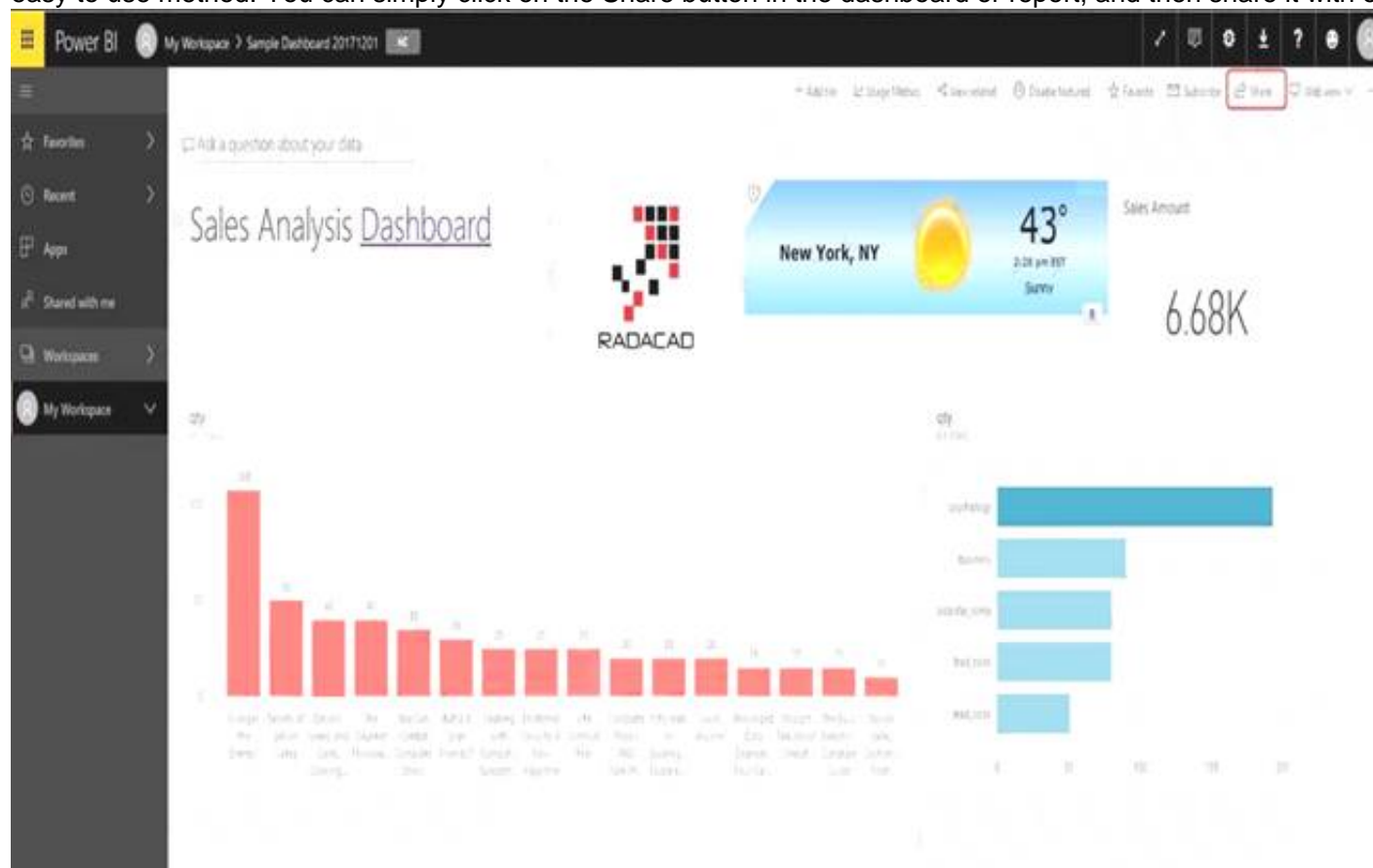
What are three possible ways to achieve the goal? Each correct answer presents a complete solution. NOTE: Each correct selection is worth one point.

- A. Create a Power BI workspace and grant coworkers permissions.
- B. Publish the dashboard as an app to your coworkers.
- C. Export the data into Common Data Service for others to manipulate in Power BI.
- D. Export the data to Microsoft Excel for coworkers to import and view in Power BI.
- E. Embed reports in your company's internal web portal.

Answer: ABE

Explanation:

A: Basic Sharing for Dashboards and Reports through a workspace is the most common way of sharing the Power BI content. Basic Sharing is very simple and easy to use method. You can simply click on the Share button in the dashboard or report, and then share it with other users.



B: Apps are great sharing method for multiple environment, and best way of sharing for users in production environment.

Power BI App is the solution for multiple environment approach. With Power BI App, your development environment (workspace), and user environment (App) are isolated from each other.

Note: If you are using SharePoint online as a portal for document management and some other reasons already, then consider using Embed in SharePoint Online feature of Power BI reports. This method is secure and you can share the report only with Power BI users you want.

E: Sometimes, you don't need a secure way of sharing, you may search for an easy and free way of sharing, and your content is not confidential or sensitive.

Publish to web is your friend in such situation. This is the only free way of sharing in Power BI, but be aware that this method is not secure.

Publish to web method, gives you an embed code, which you can use in any web pages to embed the Power BI report in it

Reference:
<https://radacad.com/power-bi-sharing-methods-comparison-all-in-one-review>

NEW QUESTION 27

- (Exam Topic 4)
You create a Power Apps canvas app.
You need to ensure that your coworkers can run the app. What should you do?

- A. Share the app.
- B. Send the URL for the app to coworkers.
- C. Add a license for the app.
- D. Create a Flow for the app.

Answer: A

Explanation:

Reference:
<https://docs.microsoft.com/en-us/powerapps/maker/canvas-apps/share-app>

NEW QUESTION 32

- (Exam Topic 4)
A company publishes e-books for independent authors.
The company wants to implement a Power Apps portal solution to make announcements about upcoming books to the general public.
You need to recommend features for the company.
Which features should you use? To answer, select the appropriate options in the answer area. NOTE: Each correct selection is worth one point.

Requirement	
Ensure that book authors can securely access their data.	<div>Authenticate external users. Access data in Common Data Service. Use page templates. Browse content anonymously.</div>
Ensure consistent page design across the website.	<div>Authenticate external users. Access data in Common Data Service. Use page templates. Browse content anonymously.</div>
Ensure that the public can access announcements about upcoming	<div>Authenticate external users. Use page templates. Browse content anonymously.</div>

- A. Mastered
- B. Not Mastered

Answer: A

Explanation:

Reference:
<https://www.onactuate.com/upgrades/what-is-the-new-powerapps-portal/> <https://docs.microsoft.com/en-us/powerapps/maker/portals/configure/page-templates>

NEW QUESTION 33

- (Exam Topic 4)
A company is creating a canvas app to display data from a legacy system that is located on the company's internal network.
You need to connect to the data. What should you use?

- A. custom connector
- B. content pack
- C. data gateway
- D. Power Automate

Answer: C

Explanation:

<https://docs.microsoft.com/en-us/powerapps/maker/canvas-apps/gateway-management>

NEW QUESTION 38

- (Exam Topic 4)
A company plans to implement Power Apps in a Power Platform environment. You need to implement other required components.
Match each option to its function. To answer, drag the appropriate option from the column on the left to its function on the right. Each option may be used once, more than once, or not at all.
NOTE: Each correct match is worth one point.

Products	Answer Area	
	Function	Product
Microsoft Azure	Implement user authentication.	
custom connector	Send data to a Microsoft OneNote notebook in the same tenant.	
Microsoft Flow		
model-driven app		
canvas app		

- A. Mastered
- B. Not Mastered

Answer: A

Explanation:

Reference:

<https://powerapps.microsoft.com/en-us/blog/implementing-role-based-permission/> <https://www.encorebusiness.com/blog/powerapps-flow-can/>

NEW QUESTION 40

- (Exam Topic 4)

A company has a Power Apps app that is used by most employees. The company is expanding to other countries/regions. You need to recommend a solution to translate text generated within the Power Apps in near real-time. What should you recommend?

- A. Microsoft Azure Synapse Analytics
- B. Microsoft Azure Cognitive Services
- C. Common Data Service connector
- D. Power BI

Answer: B

Explanation:

Reference:

https://docs.microsoft.com/en-gb/azure/cognitive-services/welcome? ocid=AID2339762_TWITTER_oo_spl100000827964250
<https://powerapps.microsoft.com/en-us/blog/cognitive-services-with-powerapps-using-custom-connectors/>

NEW QUESTION 42

- (Exam Topic 4)

A company’s customer-facing applications must comply with Global Data Protection Regulations (GDPR) regulations. You need to recommend actions to help ensure GDPR compliance. Which two features should the company use? Each correct answer presents part of the solution. NOTE: Each correct selection is worth one point.

- A. Prompt a user for consent to use their personal data and record the date consented.
- B. Automatically deactivate a user who has not used the portal in six months.
- C. Force a user to update security questions after a specific amount of time.
- D. Block users who are identified as minors.

Answer: AD

Explanation:

Reference: https://en.wikipedia.org/wiki/General_Data_Protection_Regulation

NEW QUESTION 44

- (Exam Topic 4)

A user is creating their first canvas app in Power Apps. The user does not know what types of controls they can include. You need to recommend solutions for the user. Which types of controls would you recommend using in Power Apps? To answer, select the appropriate control in the dialog box in the answer area. NOTE: Each correct selection is worth one point.

Scenario	Control
View the date, time, and location of upcoming internal meetings.	<div><div></div><div>Meeting-screen template</div><div>Gallery</div><div>List box</div></div>
Create a meeting request from within the app.	<div><div></div><div>Meeting-screen template</div><div>Gallery</div><div>List box</div></div>
Drill down into customer contact records in Dynamics 365 Sales to view a photo of a customer you are meeting.	<div><div></div><div>Image</div><div>People-screen template</div><div>Add picture</div></div>

- A. Mastered
- B. Not Mastered

Answer: A

Explanation:

Box 1: Gallery

A Gallery control can show multiple records from a data source, and each record can contain multiple types of data. For example, a Gallery control can show multiple contacts with each item showing contact information that includes a name, an address, and a phone number for each contact.

Box 2: Meeting-screen template

In a canvas app, add a meeting screen that lets users create and send meeting requests from their Office 365 Outlook accounts. Users can search for attendees in

their org and add external email addresses. If your tenant has meeting rooms built into Outlook, users can select a location as well.

Box 3: Image

If you add one or more Image controls to your app, you can show individual images that aren't part of a data set, or you can incorporate images from records in data sources.

Reference:

<https://docs.microsoft.com/en-us/powerapps/maker/canvas-apps/screen-templates/meeting-screen-overview>

NEW QUESTION 48

- (Exam Topic 5)

A company plans to implement Power Apps.

For each of the following statements, select Yes if the statement is true. Otherwise, select No. NOTE: Each correct selection is worth one point.

Answer Area

Statement	Yes	No
Building Power Apps apps requires proficiency in JavaScript programming.	<input type="radio"/>	<input type="radio"/>
You must select one of the app templates to create an app.	<input type="radio"/>	<input type="radio"/>

A. Mastered

B. Not Mastered

Answer: A

Explanation:

Reference:

<https://docs.microsoft.com/en-us/powerapps/maker/>

NEW QUESTION 51

- (Exam Topic 5)

A company plans to use Power Apps to connect to a series of custom services. There are no connectors available for the custom services.

For each of the following statements, select Yes if the statement is true. Otherwise, select No. NOTE: Each correct selection is worth one point.

Statement	Yes	No
Custom connectors for customer-specific services do not require review and certification by Microsoft.	<input type="radio"/>	<input type="radio"/>
You can build a custom connector once and reuse the connector for Power Apps and Microsoft Flow.	<input type="radio"/>	<input type="radio"/>
You can make custom connectors publicly available for all Power Platform users without having Microsoft certify the connector.	<input type="radio"/>	<input type="radio"/>

A. Mastered

B. Not Mastered

Answer: A

Explanation:

Box 1: Yes

Only if you would like to share your connector with all users of Logic Apps, Microsoft Flow, and PowerApps, you can submit your connector for Microsoft certification. Microsoft will review your connector.

Box 2: Yes

Connectors created in Microsoft Flow are available in PowerApps. Likewise, connectors created in PowerApps are available in Microsoft Flow.

Box 3: No

If you would like to share your connector with all users of Logic Apps, Microsoft Flow, and PowerApps, you can submit your connector for Microsoft certification. Microsoft will review your connector.

Reference:

<https://docs.microsoft.com/en-us/connectors/custom-connectors/>

NEW QUESTION 54

- (Exam Topic 5)

You are creating a canvas app that uses one connector.

Which two objects are provided to Power Apps by the connector? Each correct answer presents a complete solution.

NOTE: Each correct selection is worth one point.

A. tables

B. customizations

C. triggers

D. actions

Answer: AD

NEW QUESTION 57

- (Exam Topic 5)

A company uses a third party application and an approval process via email. At the end of the month, the IT department enters the data into Microsoft Excel to create pivot charts.

The Excel pivot charts must use the same data source as Dynamics 365 Field Service to generate charts and reports.

You need to recommend a solution.

What should you recommend? To answer, select the appropriate configuration in the answer area. NOTE: Each correct selection is worth one point.

Requirement	Solution
Create an approval workflow.	<div><div></div><div>Dynamics 365 Workflow Notifications</div><div>Microsoft Outlook Integration</div><div>AI Builder</div><div>Microsoft Flow</div></div>
Connect to report data.	<div><div></div><div>Common Data Service and Power BI</div><div>Third-party from AppSource</div><div>Custom Code flat file integration</div><div>Dynamics 365 Field Service</div></div>

A. Mastered

B. Not Mastered

Answer: A

Explanation:

Box 1: Dynamics 365 Workflow notifications

You can configure the system to send email messages to users when workflow-related events occur. Note:

➤ Go to Navigation pane > Modules > System administration > Users > Users.

➤ In the list, find and select the desired record.

➤ On the Action pane, click User options.

➤ Click the Workflow tab. Make sure that the Notifications section is expanded. In the Notifications section, you can specify how you want the user to be notified about workflow-related events.

Box 2: Dynamics 365 Field Service

Supply Chain Management enables synchronization of business processes between Dynamics 365 Supply Chain Management and Dynamics 365 Field Service.

The integration scenarios are configured by using extensible Data integrator templates and Common Data Service to enable the synchronization of business processes. Standard templates can be used to create custom integration projects, where additional standard and custom fields and entities can be mapped to adjust the integration and meet specific business needs.

Reference:

<https://docs.microsoft.com/en-us/dynamics365/fin-ops-core/fin-ops/organization-administration/tasks/users-rece>

NEW QUESTION 60

- (Exam Topic 5)

A company plans to synchronize data between Dynamics 365 Supply Chain management and Dynamics 365 Sales.

For each of the following statements, select Yes if the statement is true. Otherwise, select No. NOTE: Each correct selection is worth one point.

Statement	Yes	No
You can implement a process-based integration by using the Data Integration feature.	<input type="radio"/>	<input type="radio"/>
You can use Microsoft Azure Data Migration to synchronize data between the apps.	<input type="radio"/>	<input type="radio"/>

A. Mastered

B. Not Mastered

Answer: A

Explanation:

Reference:

<https://docs.microsoft.com/en-us/business-applications-release-notes/april19/cdm-data-integration/cds-data-integ>

NEW QUESTION 64

- (Exam Topic 5)

You need to build a Power Virtual Agents chatbot for a company.

Which components should you use? To answer, drag the appropriate components to the correct requirements. Each component may be used once, more than

once, or not at all. You may need to drag the split bar between panes or scroll to view content.

NOTE: Each correct selection is worth one point.

- A. Mastered
- B. Not Mastered

Answer: A

Explanation:

NEW QUESTION 65

- (Exam Topic 5)

A company uses Dynamics 365 Supply Chain Management.

When a sales order is created for one of the customers that a specific user manages, a Microsoft Outlook task must be created to remind the user to perform any follow up activities that are required.

You need to implement the functionality to create Outlook tasks.

Which two features should you use? Each correct answer presents part of the solution. NOTE: Each correct selection is worth one point.

- A. AI Builder
- B. Power Apps
- C. Business Events
- D. Microsoft Flow
- E. Common Data Service

Answer: CD

Explanation:

Business events in Microsoft Power Automate

Business events can be consumed in Microsoft Power Automate via the application connector. The connector has a trigger that is named when a business event occurs. This trigger can be used to subscribe to any of the business events that are available in the target instance of the application.

Reference:

<https://docs.microsoft.com/en-us/dynamics365/fin-ops-core/dev-itpro/business-events/business-events-flow>

NEW QUESTION 68

- (Exam Topic 5)

A company uses Power Automate.

Which three items can trigger flows? Each correct answer presents a complete solution. NOTE: Each correct selection is worth one point.

- A. Lifecycle Services
- B. Microsoft 365 Admin center
- C. Common Data Service
- D. Microsoft Outlook 365
- E. Microsoft Windows Desktop

Answer: ACD

Explanation:

<https://docs.microsoft.com/en-us/power-automate/email-triggers> <https://docs.microsoft.com/en-us/power-automate/connection-cds>

<https://dynamics365.wordpress.com/category/powerapps/>

NEW QUESTION 70

- (Exam Topic 5)

A company is using Power Automation to automate business processes. You need to recommend triggers for Instant flows.

What trigger types should you recommend? To answer, select the appropriate options in the answer area. NOTE: Each correct selection is worth one point.

Requirement	Trigger type
Run a flow when the user presses a button in a canvas app.	<div><div></div><div>▼</div><div>PowerApps</div><div>for a selected row</div><div>manually trigger a flow</div><div>for a selected file (OneDrive for a Business)</div></div>
Run a flow when user presses a button in the mobile Flow app.	<div><div></div><div>▼</div><div>PowerApps</div><div>for a selected row</div><div>manually trigger a flow</div><div>for a selected file (SharePoint)</div></div>

- A. Mastered
B. Not Mastered

Answer: A

Explanation:

Reference:

<https://docs.microsoft.com/en-us/powerapps/maker/canvas-apps/using-logic-flows> <https://www.o365dude.com/2017/07/15/flow-buttons-the-hidden-gem-of-microsoft-flow/>

NEW QUESTION 71

- (Exam Topic 6)

You are creating a model-driven app.

For each of the following statements, select Yes if the statement is true. Otherwise, select No.

NOTE: Each correct selection is worth one point.

Statements	Yes	No
To add entities to an app, entities are dragged onto the app canvas from the components area.	<input type="radio"/>	<input type="radio"/>
View definition is created in the component area of the app designer.	<input type="radio"/>	<input type="radio"/>
You must save, validate, and publish your app for others to see the changes.	<input type="radio"/>	<input type="radio"/>

- A. Mastered
B. Not Mastered

Answer: A

Explanation:

Reference:

<https://docs.microsoft.com/en-us/powerapps/maker/model-driven-apps/build-first-model-driven-app> <https://docs.microsoft.com/en-us/powerapps/maker/model-driven-apps/validate-app>

NEW QUESTION 73

- (Exam Topic 6)

A company is evaluating ways to connect Power Platform apps to external services to perform complex activities. For each of the following statements, select Yes if the statement is true. Otherwise, select No. NOTE: Each correct selection is worth one point.

Answer Area		
Statement	Yes	No
You can create a canvas app that scans and parses documents using Azure Cognitive Services and then adds the appropriate information to Dynamics 365 Sales.	<input type="radio"/>	<input type="radio"/>
You can create a canvas app that uses Azure Cognitive Services to read incident records and identify tickets that need to be escalated based on sentiment score.	<input type="radio"/>	<input type="radio"/>

- A. Mastered
B. Not Mastered

Answer: A

Explanation:

Yes Yes

NEW QUESTION 77

- (Exam Topic 6)

A company is using Power Automate to automate business processes. You need to run a flow when a user presses a button in an app. Which trigger type should you recommend?

- A. Power Apps
- B. for a selected row
- C. manually trigger a flow

Answer: A

Explanation:

Reference:

<https://docs.microsoft.com/en-us/powerapps/maker/canvas-apps/using-logic-flows>

NEW QUESTION 81

- (Exam Topic 6)

A company plans to use Power Platform to build apps that address specific business challenges. You need to recommend the appropriate types of Power Apps to use. What should you recommend? To answer, select the appropriate options in the answer area.

NOTE: Each correct selection is worth one point

Answer Area

Scenario

Field technicians need a mobile app to capture the location and the image of defective products.
Sales representatives need to see different views and dashboards in the sales app.

Tool

Canvas app

Power Apps Portals

Common Data Service

Canvas app

Model-driven app

Power Apps Portals

- A. Mastered
- B. Not Mastered

Answer: A

Explanation:

Answer Area

Scenario

Field technicians need a mobile app to capture the location and the image of defective products.
Sales representatives need to see different views and dashboards in the sales app.

Tool

Canvas app

Power Apps Portals

Common Data Service

Canvas app

Model-driven app

Power Apps Portals

NEW QUESTION 84

- (Exam Topic 6)

You are a sales manager for a large retail organization.

You are creating a Power Apps app that will display customer product purchase information from your old point-of-sale (POS) system and need to link those sales to the customer accounts and product sales in Dynamics 365 Commerce.

You need to use the appropriate component. What should you use?

- A. business process flow
- B. business rule
- C. Common Data Service
- D. entity metadata

Answer: C

NEW QUESTION 85

- (Exam Topic 6)

A company plans to use Power Automate to automate tasks.

Match each flow type to its description to answer, drag the appropriate now type from the column on the left to its description on the right. Each option may be used once, more than once, or not at all.

NOTE: Each correct match is worth one point.

Flow types

automated

business process

scheduled

instant

Answer Area

Description

a flow that runs after it is triggered by an event
a flow that guides a user through a set of tasks
a flow that runs after a specified number of days
a flow that allows you to start tasks on demand

Flow type

Flow type

Flow type

Flow type

- A. Mastered
B. Not Mastered

Answer: A

Explanation:

low types

automated
business process
scheduled
instant

Answer Area

Description

a flow that runs after it is triggered by an event
a flow that guides a user through a set of tasks
a flow that runs after a specified number of days
a flow that allows you to start tasks on demand

Flow type

automated
business process
scheduled
instant

NEW QUESTION 87

- (Exam Topic 6)
You are authoring a Power Virtual Agents chatbot for a company.
For each of the following statements, select Yes if the statement is true. Otherwise, select No.
NOTE: Each correct selection is worth one point.

Statements	Yes	No
You must create a custom action to display a knowledge base article that answers a common support question.	<input type="radio"/>	<input type="radio"/>
You can use Power Automate to retrieve a customer’s contact number in order to verify they are an authorized user and their support plan SLA.	<input type="radio"/>	<input type="radio"/>

- A. Mastered
B. Not Mastered

Answer: A

Explanation:

Reference:
<https://docs.microsoft.com/en-us/azure/cognitive-services/qnamaker/tutorials/integrate-with-power-virtual-assist> <https://docs.microsoft.com/en-us/power-virtual-agents/advanced-flow>

NEW QUESTION 90

- (Exam Topic 6) You create a model-driven app. The app is ready to be shared.
You need to complete the process required to set the app up to be shared.
How should you complete the process for setting up the app to be shared? To answer, drag the appropriate setting to the correct drop targets. Each source may be used once, more than once, or not at all. You may need to drag the split bar between panes or scroll to view content.
NOTE: Each correct selection is worth one point.

Processes

Select an app from the Power Apps
Select the app and select a security
Select a user and choose a security
Select Share.

Answer Area

Step

1
2
3
4

Process
Process
Process
Process

- A. Mastered
B. Not Mastered

Answer: A

Explanation:

Reference:
<https://docs.microsoft.com/en-us/powerapps/maker/model-driven-apps/share-model-driven-app>

NEW QUESTION 94

- (Exam Topic 6)
A company is building an interactive chatbot to answer questions about products and product warranties You need to create conversation paths re questions about product warranties. Which tool should you use?

- A. Azure Bot Framework
B. Power Platform admin center
C. Conversation node

- D. Authoring canvas
- E. Power Virtual Agents portal

Answer: E

NEW QUESTION 98

- (Exam Topic 6)

Match each tool to its task. To answer, drag the appropriate tool from the column on the left to its task on the right. Each tool may be used once, more than once, or not at all.

NOTE: Each correct match is worth one point.

Tools

Power BI

Power Automate

Power Apps

Answer Area

Task

Automate workflows.

Trigger an action from an event.

Create a custom mobile data entry screen.

Tool

- A. Mastered
- B. Not Mastered

Answer: A

Explanation:

Tools

Power BI

Power Automate

Power Apps

Answer Area

Task

Automate workflows.

Trigger an action from an event.

Create a custom mobile data entry screen.

Tool

Power Automate

Power BI

Power Apps

NEW QUESTION 102

- (Exam Topic 6)

A company is creating a chatbot to replace a frequently asked questions (FAQ) site

You must perform step-by-step testing for al scenarios that are part of a complex user interaction that includes multiple topics. Testers must be able to see the workflow while interacting with the chatbot.

You need to test the chatbot. What should you do?

- A. Publish the chatbot and test it in the demo website.
- B. Use the chatbot designer to test the chatbot
- C. View analytics for a chatbot conversation.
- D. Publish the chatbot and test it in any channel

Answer: B

Explanation:

Test and maintain chatbots through an incredibly easy-to-use graphical interface. Recognize and act on dozens of common entities in the user’s conversation such as colors, currencies, ages, dates and times, or create your own, and store user information in variables and use them to branch or create complex conversations.

<https://powervirtualagentsblogcdn.azureedge.net/wp-content/uploads/2019/11/Tracking.png>

Power Virtual Agents

Test chat

SmartPrinter X troubleshooter

Delete

Discard changes

Undo

Redo

Topic checker

Save

Bot

luca@email.com

Ask now

I see that your smart printer you purchased is the SmartPrinterX on 2018-12-20

Ask now

Yes

Ask now

I can contact your SmartPrinterX(serial number 418c4e1e-994b-49b5-aca8-04e3f08c00d3) directly to get more information on your issue.

Would you like me to do so?

Yes, please look up the issue for me

No, i'll desc

Enter your response here

Condition

is (Context/created) =

Equals

Yes

Question

Ask a question

I can contact your "SmartPrinter X" directly to get more information on your issue. Would you like me to do so?

Identify

Multiple choice

Options for user

Yes, please look up the issue for me

No, I'll describe the issue myself

New option

Save response as

is (Phone/Location/Test)

Condition

is (Context/created) =

Equals

Yes, please look up the issue for me

Condition

is (Context/created) =

Equals

No, I'll describe the issue myself

Message

Sorry, our records show something else. Let me connect you to one of our human agents that can assist you further.

One moment please

Transfer to agent

Include a private message to the agent

Message (optional)

NEW QUESTION 105

The Leader of IT Certification

visit - <https://www.certleader.com>

- (Exam Topic 6)

You plan to use Power Automate to monitor what people are saying about your company's products. You store the feedback for research and development purposes.

You need to recommend Power Automate components to use for the solution.

To answer drag the appropriate components to the correct requirements. Each component may be used once, more than once, or not at all. You may need to drag the split Car between panes or scroll to view content.

NOTE: Each correct selection is worth one point

Components	Requirement	Component
action	Retrieve the top five posts from your company's Facebook page.	Component
expression	Enter the resulting posts into the product database.	Component
service	Combine author and link fields into a single field.	Component
trigger	Run a flow every hour.	Component

- A. Mastered
- B. Not Mastered

Answer: A

Explanation:

Components	Requirement	Component
action	Retrieve the top five posts from your company's Facebook page.	action
expression	Enter the resulting posts into the product database.	action
service	Combine author and link fields into a single field.	expression
trigger	Run a flow every hour.	trigger

NEW QUESTION 107

.....

Thank You for Trying Our Product

* 100% Pass or Money Back

All our products come with a 90-day Money Back Guarantee.

* One year free update

You can enjoy free update one year. 24x7 online support.

* Trusted by Millions

We currently serve more than 30,000,000 customers.

* Shop Securely

All transactions are protected by VeriSign!

100% Pass Your PL-900 Exam with Our Prep Materials Via below:

<https://www.certleader.com/PL-900-dumps.html>